

Data Path : Z:\voasrv\HPCHEM1\MSVOA_N\Data\VN022425\
 Data File : VN085835.D
 Acq On : 24 Feb 2025 14:24
 Operator : JC\MD
 Sample : Q1405-03
 Misc : 5.0mL/MSVOA_N/WATER
 ALS Vial : 9 Sample Multiplier: 1

Instrument :
 MSVOA_N
 ClientSampleId :
 MW-20D-021325

Integration Parameters: RTEINT.P

Integrator: RTE
 Smoothing : ON Filtering: 5
 Sampling : 1 Min Area: 3 % of largest Peak
 Start Thrs: 0.2 Max Peaks: 100
 Stop Thrs : 0 Peak Location: TOP

If leading or trailing edge < 100 prefer < Baseline drop else tangent >
 Peak separation: 5

Method : Z:\voasrv\HPCHEM1\MSVOA_N\methods\82N021825W.M
 Title : SW846 8260

Signal : TIC: VN085835.D\data.ms

| peak # | R.T. min | first scan | max scan | last scan | PK TY | peak height | corr. area | corr. % max. | % of total |
|--------|----------|------------|----------|-----------|-------|-------------|------------|--------------|------------|
| 1 | 7.483 | 932 | 940 | 949 | rVB3 | 7106 | 17385 | 1.38% | 0.258% |
| 2 | 8.165 | 1043 | 1056 | 1060 | rBV | 205431 | 470397 | 37.37% | 6.984% |
| 3 | 8.224 | 1060 | 1066 | 1078 | rVB | 316109 | 709864 | 56.39% | 10.539% |
| 4 | 8.577 | 1117 | 1126 | 1135 | rBV2 | 207105 | 461046 | 36.62% | 6.845% |
| 5 | 8.782 | 1153 | 1161 | 1178 | rVB4 | 17149 | 73477 | 5.84% | 1.091% |
| 6 | 9.100 | 1207 | 1215 | 1232 | rVB | 487628 | 996595 | 79.17% | 14.796% |
| 7 | 9.353 | 1251 | 1258 | 1265 | rVB | 25984 | 52907 | 4.20% | 0.785% |
| 8 | 10.565 | 1456 | 1464 | 1476 | rBV | 691112 | 1258871 | 100.00% | 18.690% |
| 9 | 11.100 | 1550 | 1555 | 1561 | rBV3 | 9983 | 18703 | 1.49% | 0.278% |
| 10 | 11.865 | 1675 | 1685 | 1697 | rBV | 628348 | 1114531 | 88.53% | 16.547% |
| 11 | 12.847 | 1844 | 1852 | 1862 | rBV | 405286 | 701477 | 55.72% | 10.414% |
| 12 | 13.788 | 2005 | 2012 | 2022 | rBV | 509421 | 860357 | 68.34% | 12.773% |

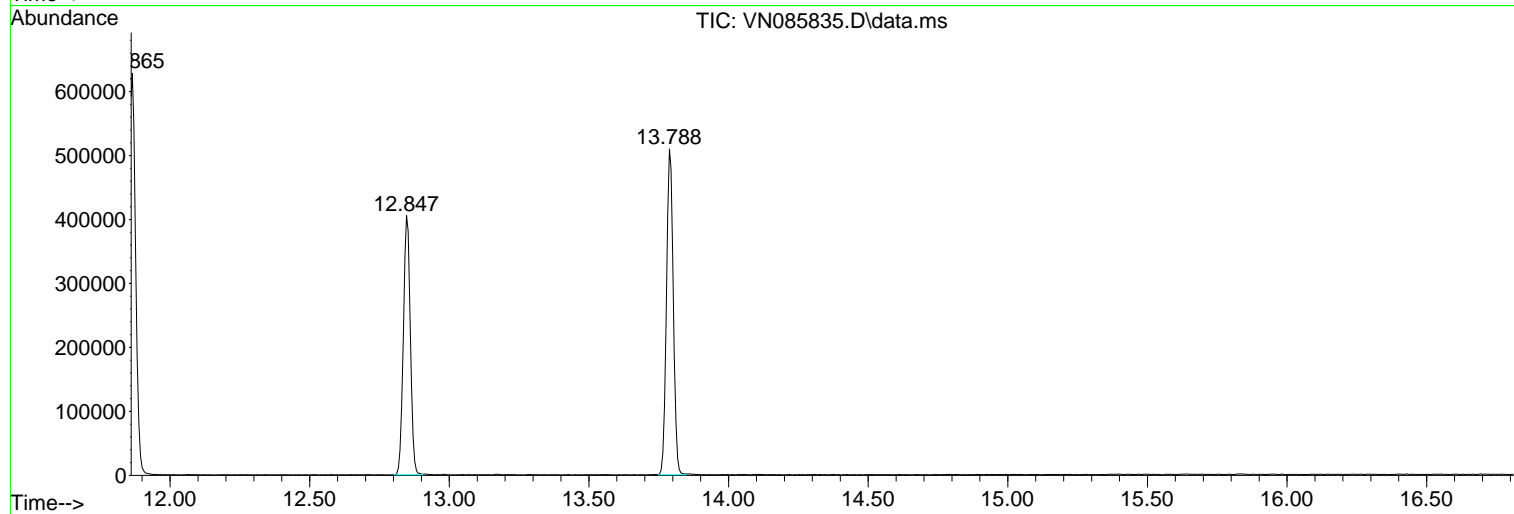
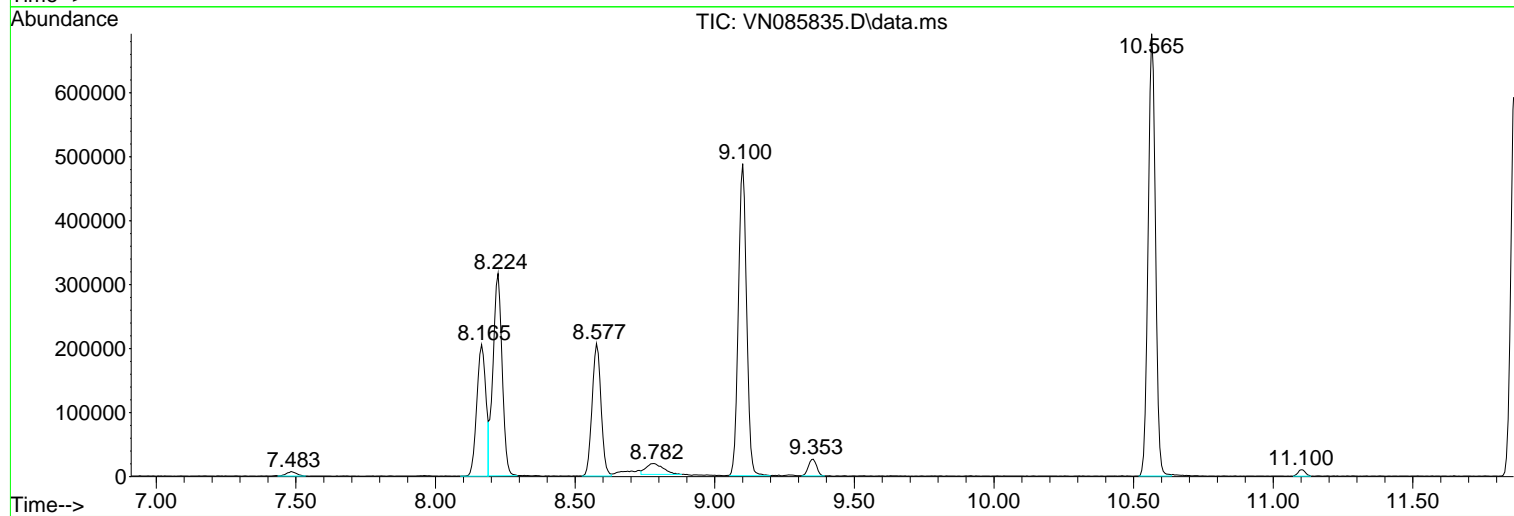
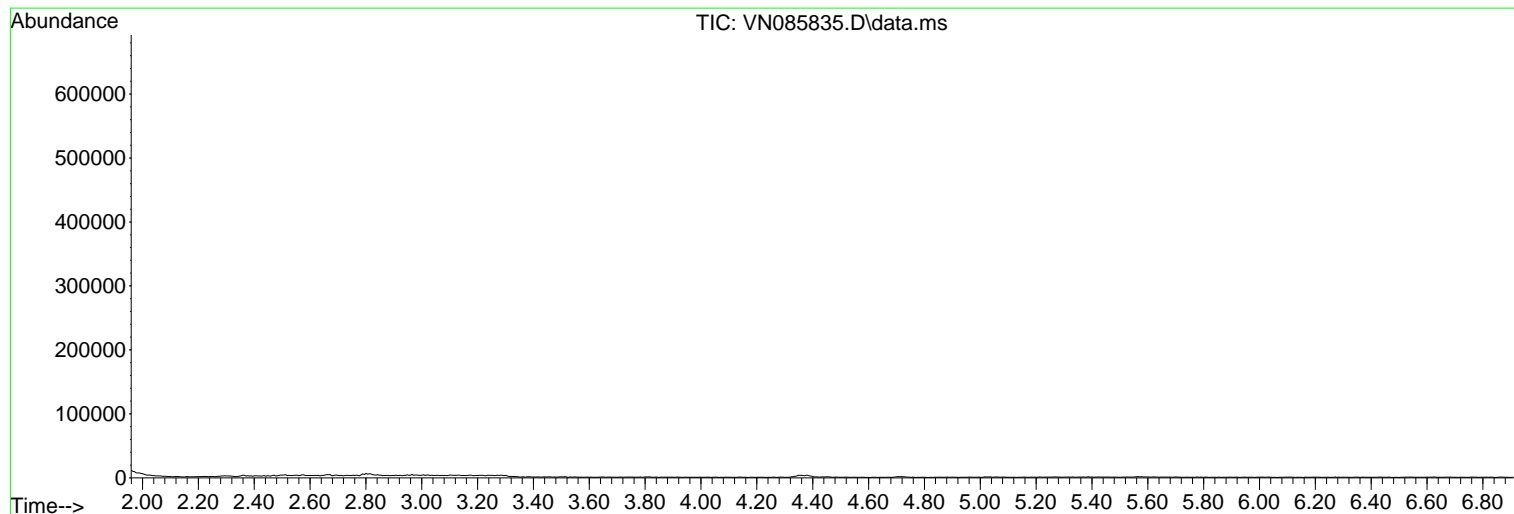
Sum of corrected areas: 6735610

Data Path : Z:\voasrv\HPCHEM1\MSVOA_N\Data\VN022425\
Data File : VN085835.D
Acq On : 24 Feb 2025 14:24
Operator : JC\MD
Sample : Q1405-03
Misc : 5.0mL/MSVOA_N/WATER
ALS Vial : 9 Sample Multiplier: 1

Instrument :
MSVOA_N
ClientSampleId :
MW-20D-021325

Quant Method : Z:\voasrv\HPCHEM1\MSVOA_N\methods\82N021825W.M
Quant Title : SW846 8260

TIC Library : C:\Database\NIST20.L
TIC Integration Parameters: LSCINT.P



Library Search Compound Report

Data Path : Z:\voasrv\HPCHEM1\MSVOA_N\Data\VN022425\
Data File : VN085835.D
Acq On : 24 Feb 2025 14:24
Operator : JC\MD
Sample : Q1405-03
Misc : 5.0mL/MSVOA_N/WATER
ALS Vial : 9 Sample Multiplier: 1

Instrument :
MSVOA_N
ClientSampleId :
MW-20D-021325

Quant Method : Z:\voasrv\HPCHEM1\MSVOA_N\methods\82N021825W.M
Quant Title : SW846 8260

TIC Library : C:\Database\NIST20.L
TIC Integration Parameters: LSCINT.P

No Library Search Compounds Detected

Data Path : Z:\voasrv\HPCHEM1\MSVOA_N\Data\VN022425\
Data File : VN085835.D
Acq On : 24 Feb 2025 14:24
Operator : JC\MD
Sample : Q1405-03
Misc : 5.0mL/MSVOA_N/WATER
ALS Vial : 9 Sample Multiplier: 1

Instrument :
MSVOA_N
ClientSampleId :
MW-20D-021325

Quant Method : Z:\voasrv\HPCHEM1\MSVOA_N\methods\82N021825W.M
Quant Title : SW846 8260

TIC Library : C:\Database\NIST20.L
TIC Integration Parameters: LSCINT.P

| TIC Top Hit name | RT | EstConc | Units | Response | --Internal Standard-- | | | |
|------------------|----|---------|-------|----------|-----------------------|----|------|------|
| | | | | | # | RT | Resp | Conc |
