

Data Path : Z:\VOASRV\HPCHEM1\MSVOA N\DATA\VN022520\
 Data File : VN060226.D
 Acq On : 25 Feb 2020 12:11
 Operator : JC/MD
 Sample : L1666-01 100X
 Misc : 5.00mL/MSVOA N/WATER
 ALS Vial : 9 Sample Multiplier: 1

Instrument :
 MSVOA_N
 ClientSampleId :
 NB-21944

Quant Time: Feb 25 16:19:30 2020
 Quant Method : Z:\VOASRV\HPCHEM1\MSVOA_N\METHODS\82N021220W.M
 Quant Title : SW846 8260
 QLast Update : Wed Feb 12 14:12:21 2020
 Response via : Initial Calibration

Internal Standards	R.T.	QIon	Response	Conc	Units	Dev(Min)
1) Pentafluorobenzene	7.64	168	174838	50.00	ug/l	0.00
34) 1,4-Difluorobenzene	8.57	114	273443	50.00	ug/l	0.00
63) Chlorobenzene-d5	11.40	117	254123	50.00	ug/l	0.00
72) 1,4-Dichlorobenzene-d4	13.34	152	112830	50.00	ug/l	0.00

System Monitoring Compounds	R.T.	QIon	Response	Conc	Units	Dev(Min)
33) 1,2-Dichloroethane-d4	8.00	65	103399	48.60	ug/l	0.00
Spiked Amount				50.000		
Recovery				=	97.20%	
35) Dibromofluoromethane	7.57	113	82727	49.22	ug/l	0.00
Spiked Amount				50.000		
Recovery				=	98.44%	
50) Toluene-d8	10.08	98	328913	49.69	ug/l	0.00
Spiked Amount				50.000		
Recovery				=	99.38%	
62) 4-Bromofluorobenzene	12.40	95	118074	48.55	ug/l	0.00
Spiked Amount				50.000		
Recovery				=	97.10%	

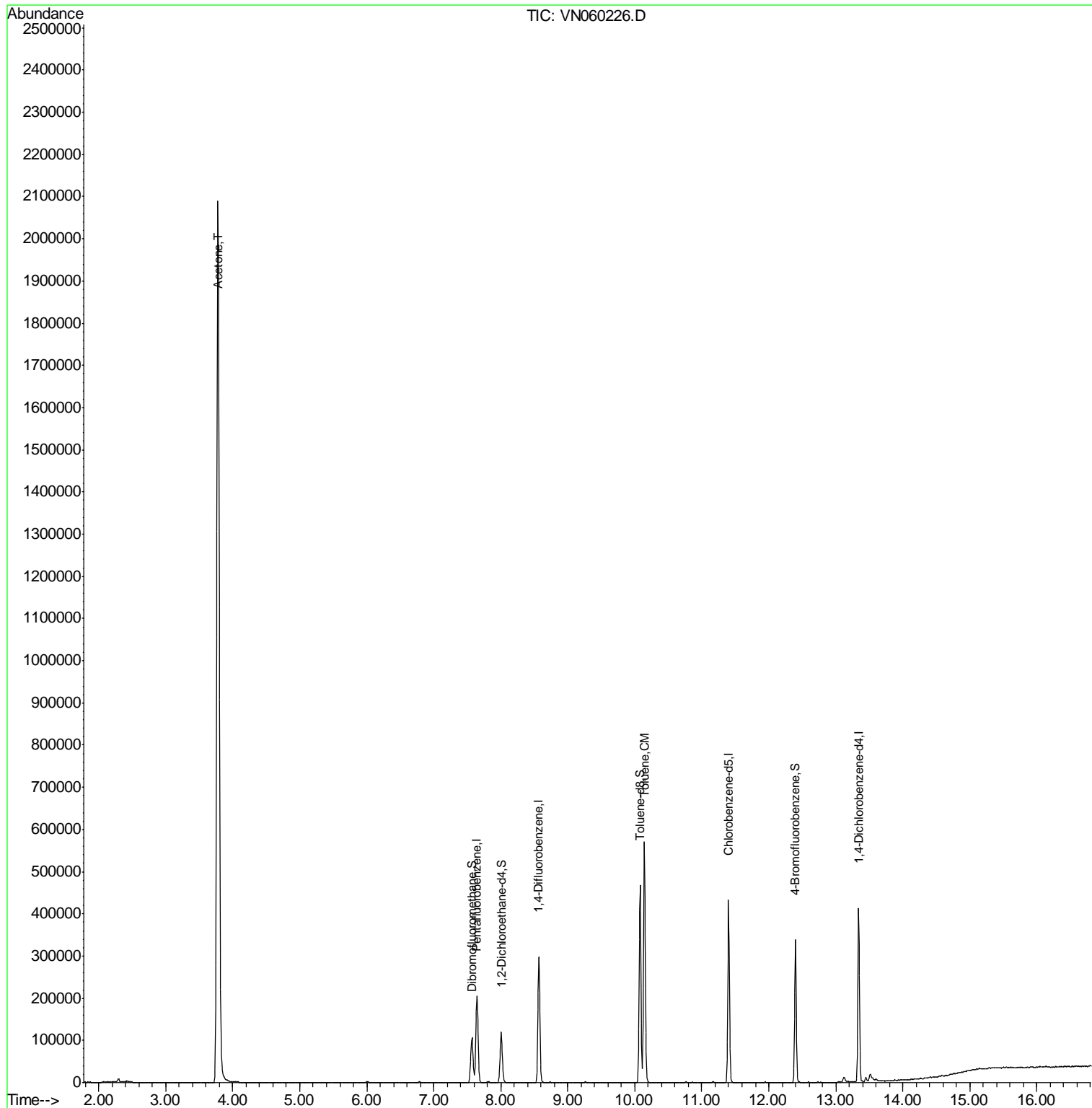
Target Compounds	R.T.	QIon	Response	Conc	Units	Qvalue
16) Acetone	3.78	43	3421044	3686.485	ug/l	99
52) Toluene	10.14	92	254143	52.750	ug/l	99

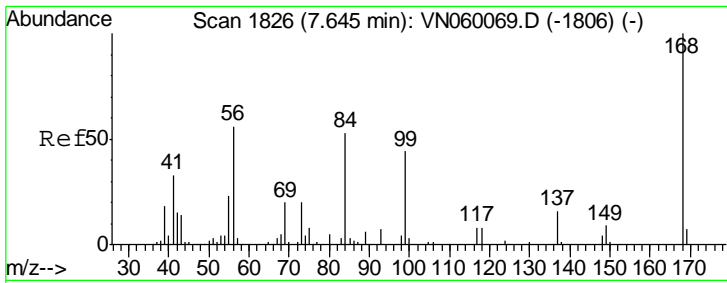
(#) = qualifier out of range (m) = manual integration (+) = signals summed

Data Path : Z:\VOASRV\HPCHEM1\MSVOA N\DATA\VN022520\
Data File : VN060226.D
Acq On : 25 Feb 2020 12:11
Operator : JC/MD
Sample : L1666-01 100X
Misc : 5.00mL/MSVOA N/WATER
ALS Vial : 9 Sample Multiplier: 1

Instrument :
MSVOA_N
ClientSampled :
NB-21944

Quant Time: Feb 25 16:19:30 2020
Quant Method : Z:\VOASRV\HPCHEM1\MSVOA_N\METHODS\82N021220W.M
Quant Title : SW846 8260
QLast Update : Wed Feb 12 14:12:21 2020
Response via : Initial Calibration

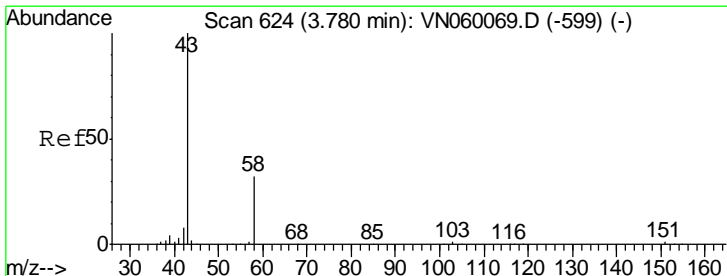
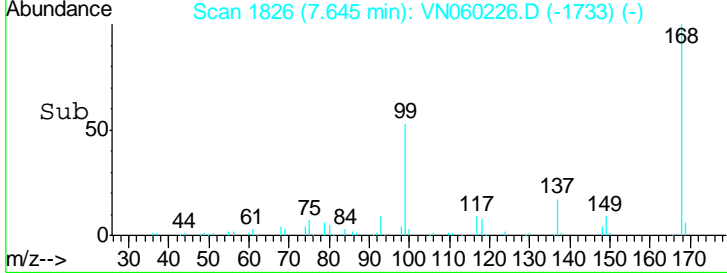
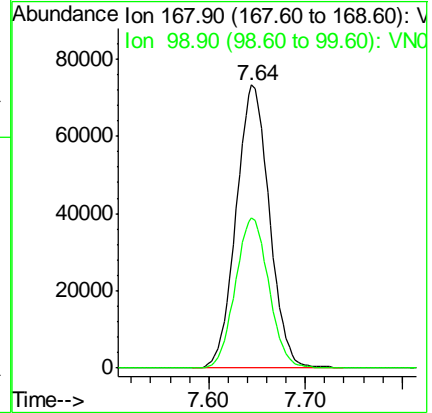
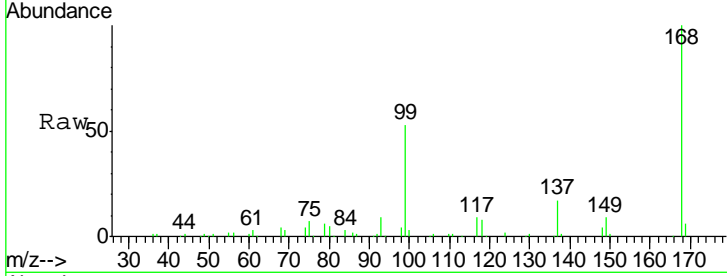




#1
 Pentafluorobenzene
 Concen: 50.000 ug/l
 RT: 7.64 min Scan# 1826
 Delta R.T. 0.00 min
 Lab File: VN060226.D
 Acq: 25 Feb 2020 12:11

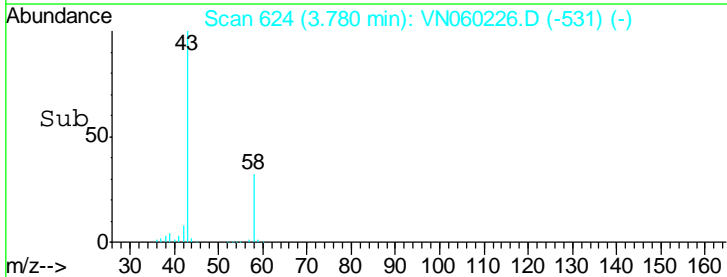
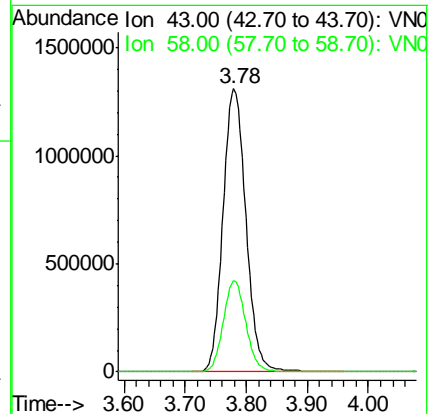
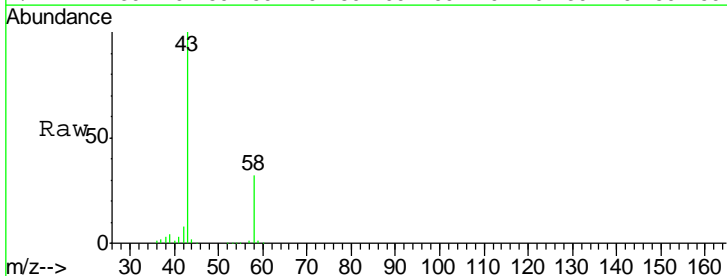
Instrument :
 MSVOA_N
 ClientSampled :
 NB-21944

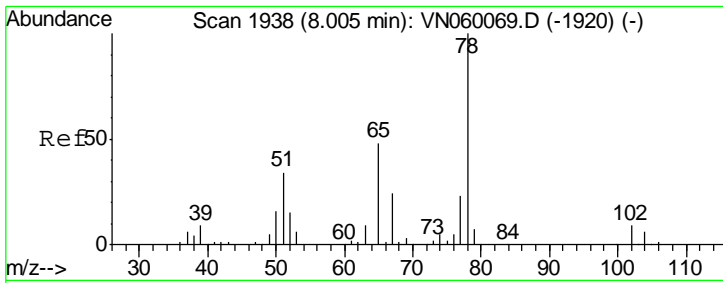
Tot Ion: 168 Resp: 174838
 Ion Ratio Lower Upper
 168 100
 99 53.1 42.7 64.1



#16
 Acetone
 Concen: 3686.485 ug/l
 RT: 3.78 min Scan# 624
 Delta R.T. 0.00 min
 Lab File: VN060226.D
 Acq: 25 Feb 2020 12:11

Tgt Ion: 43 Resp: 3421044
 Ion Ratio Lower Upper
 43 100
 58 32.1 25.2 37.8

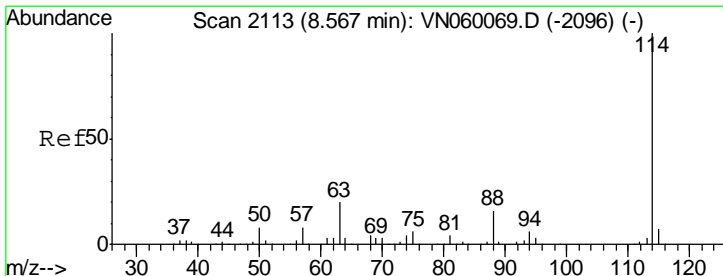
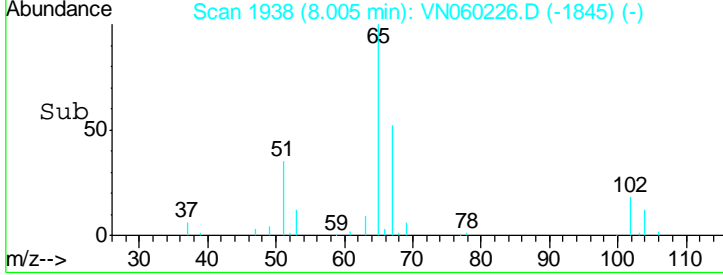
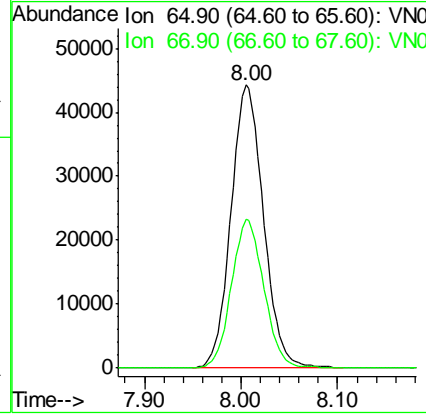
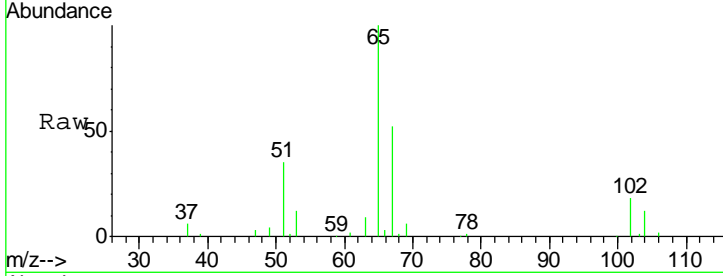




#33
 1,2-Dichloroethane-d4
 Concen: 48.602 ug/l
 RT: 8.00 min Scan# 1938
 Delta R.T. 0.00 min
 Lab File: VN060226.D
 Acq: 25 Feb 2020 12:11

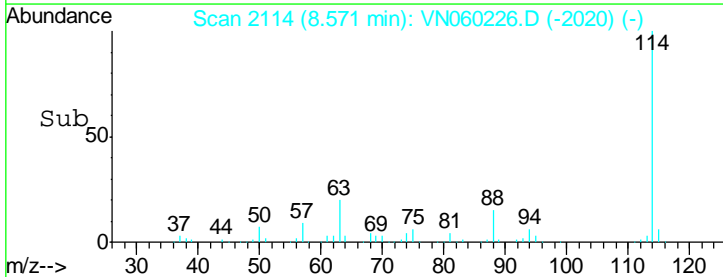
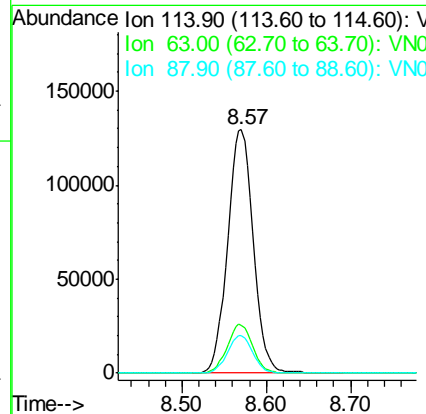
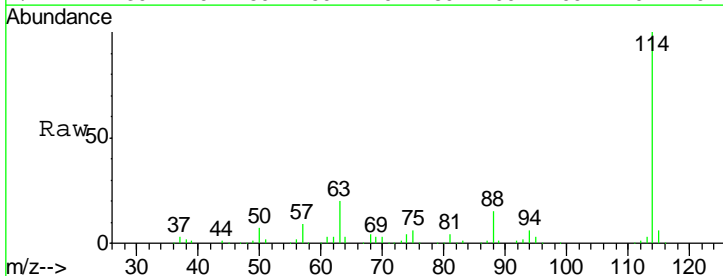
Instrument :
 MSVOA_N
ClientSampled :
 NB-21944

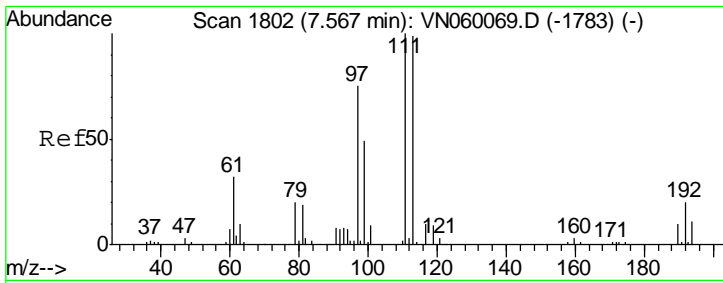
Tgt Ion	Resp	Lower	Upper
65	103399		
67	52.4	0.0	104.0



#34
 1,4-Difluorobenzene
 Concen: 50.000 ug/l
 RT: 8.57 min Scan# 2114
 Delta R.T. 0.00 min
 Lab File: VN060226.D
 Acq: 25 Feb 2020 12:11

Tgt Ion	Resp	Lower	Upper
114	273443		
63	19.9	0.0	40.0
88	15.2	0.0	31.6

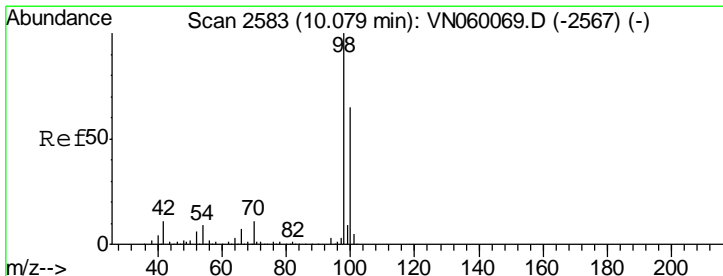
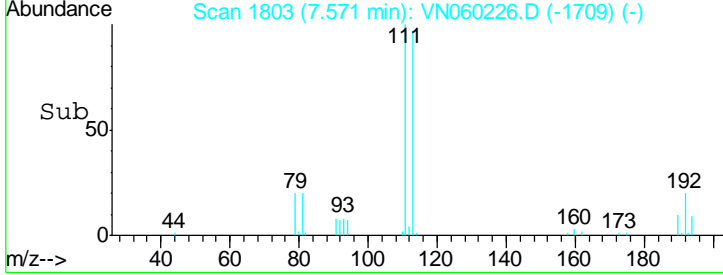
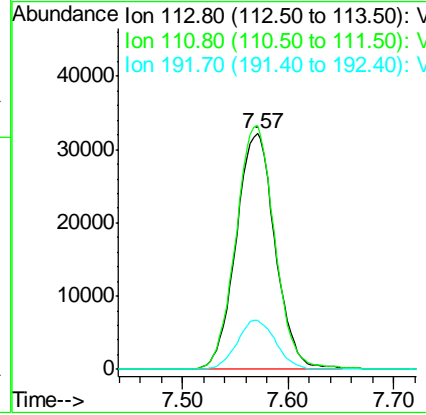
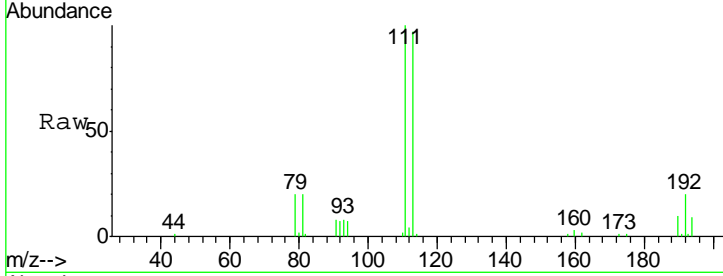




#35
 Dibromofluoromethane
 Concen: 49.217 ug/l
 RT: 7.57 min Scan# 1803
 Delta R.T. 0.00 min
 Lab File: VN060226.D
 Acq: 25 Feb 2020 12:11

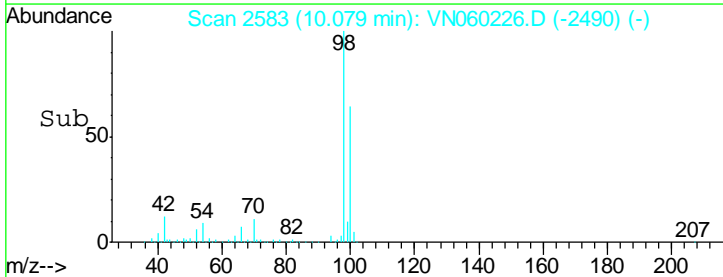
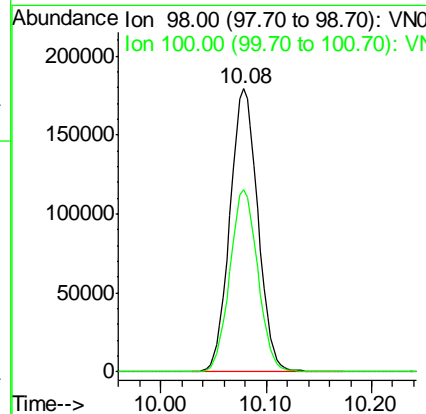
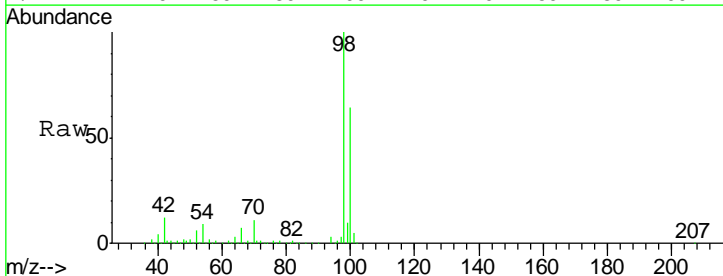
Instrument : MSVOA_N
 ClientSampled : NB-21944

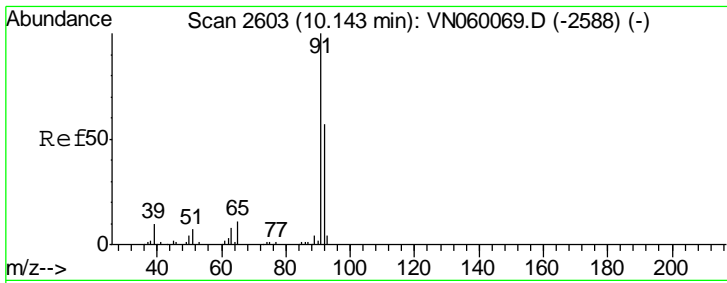
Tgt Ion	Resp	Lower	Upper
113	82727		
111	103.2	81.4	122.2
192	20.4	16.2	24.2



#50
 Toluene-d8
 Concen: 49.691 ug/l
 RT: 10.08 min Scan# 2583
 Delta R.T. 0.00 min
 Lab File: VN060226.D
 Acq: 25 Feb 2020 12:11

Tgt Ion	Resp	Lower	Upper
98	328913		
100	64.5	51.7	77.5

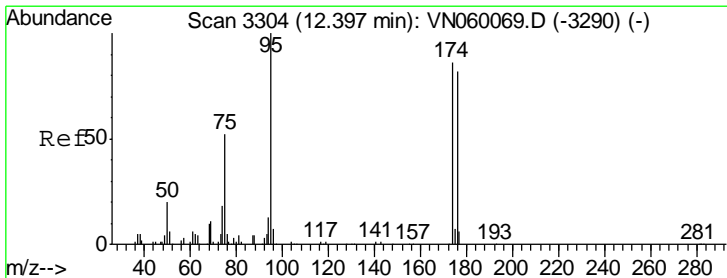
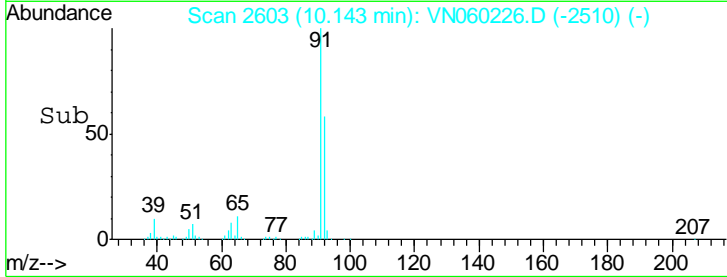
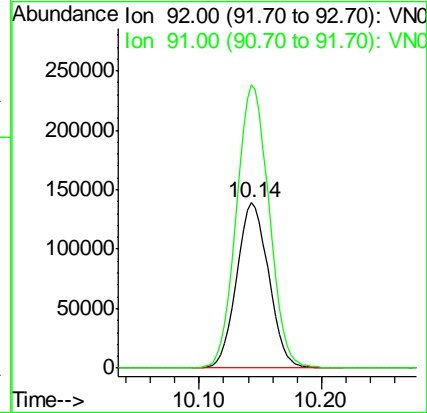
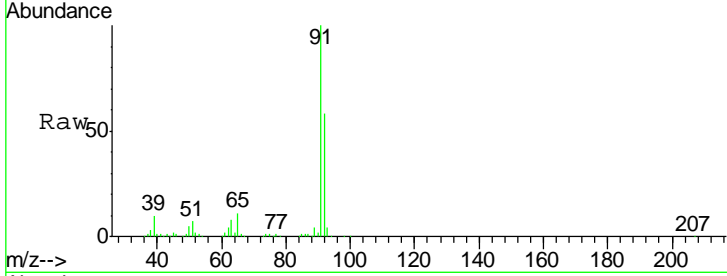




#52
 Toluene
 Concen: 52.750 ug/l
 RT: 10.14 min Scan# 2603
 Delta R.T. 0.00 min
 Lab File: VN060226.D
 Acq: 25 Feb 2020 12:11

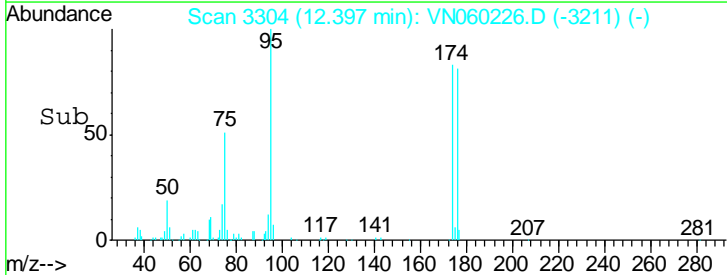
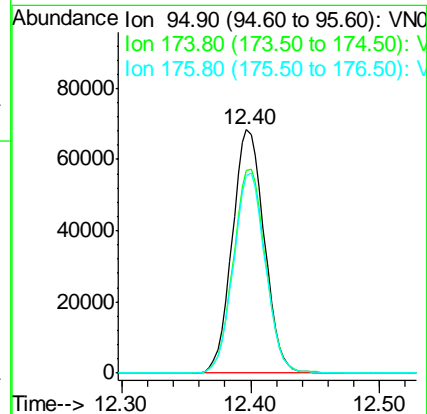
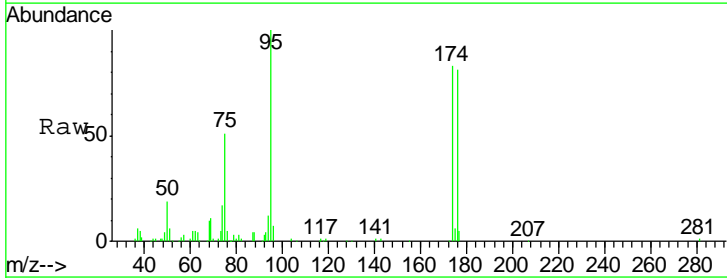
Instrument :
 MSVOA_N
 ClientSampled :
 NB-21944

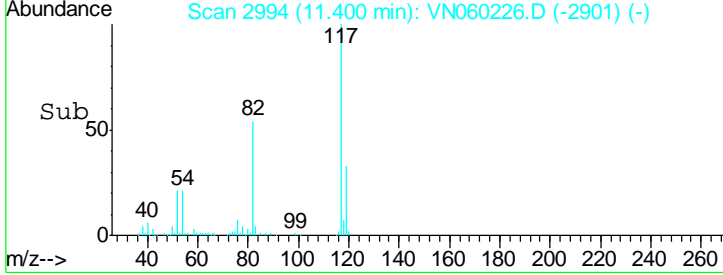
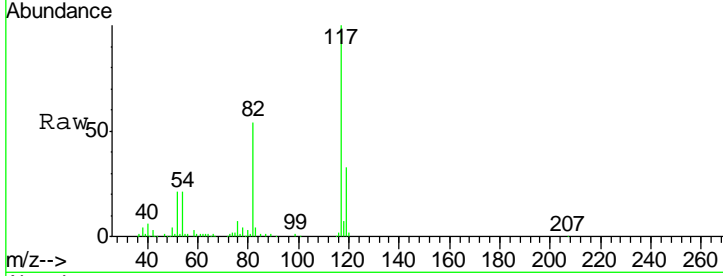
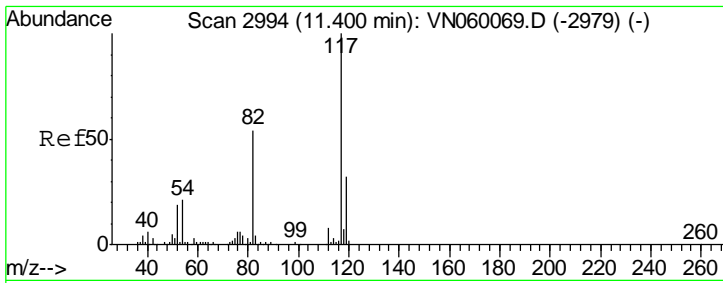
Tgt Ion	Resp	Lower	Upper
92	100		
91	174.5	140.9	211.3



#62
 4-Bromofluorobenzene
 Concen: 48.546 ug/l
 RT: 12.40 min Scan# 3304
 Delta R.T. 0.00 min
 Lab File: VN060226.D
 Acq: 25 Feb 2020 12:11

Tgt Ion	Resp	Lower	Upper
95	100		
174	84.3	0.0	169.8
176	81.9	0.0	164.8

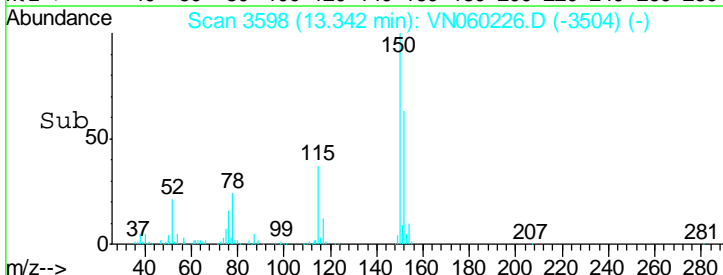
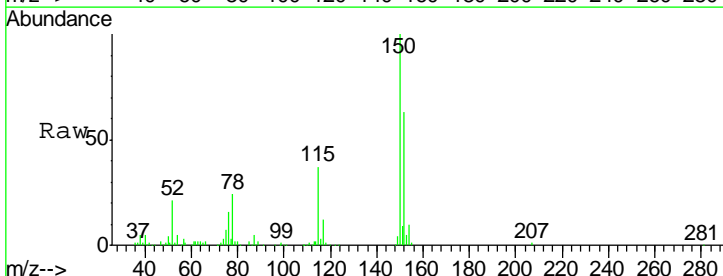
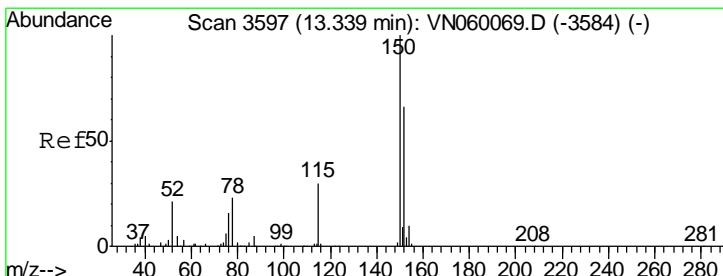
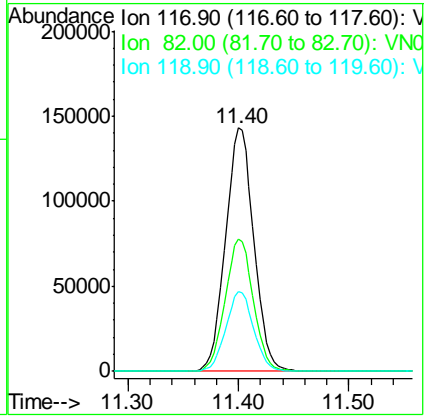




#63
 Chlorobenzene-d5
 Concen: 50.000 ug/l
 RT: 11.40 min Scan# 2994
 Delta R.T. 0.00 min
 Lab File: VN060226.D
 Acq: 25 Feb 2020 12:11

Instrument : MSVOA_N
 ClientSampled : NB-21944

Tgt Ion	Resp	Lower	Upper
117	254123		
82	54.3	43.4	65.0
119	32.6	25.8	38.6



#72
 1,4-Dichlorobenzene-d4
 Concen: 50.000 ug/l
 RT: 13.34 min Scan# 3598
 Delta R.T. 0.00 min
 Lab File: VN060226.D
 Acq: 25 Feb 2020 12:11

Tgt Ion	Resp	Lower	Upper
152	112830		
115	59.0	28.9	86.8
150	158.9	0.0	342.4

