

Data Path : Z:\voasrv\HPCHEM1\MSVOA\_N\Data\VN022525\  
 Data File : VN085855.D  
 Acq On : 25 Feb 2025 14:24  
 Operator : JC\MD  
 Sample : Q1395-01  
 Misc : 1.05g/10mL/100uL/5.00mL/MSVOA\_N/MEOH  
 ALS Vial : 11 Sample Multiplier: 1

Instrument :  
 MSVOA\_N  
 ClientSampleId :  
 BEL-25-0005

Quant Time: Feb 25 23:36:29 2025  
 Quant Method : Z:\voasrv\HPCHEM1\MSVOA\_N\methods\82N021825W.M  
 Quant Title : SW846 8260  
 QLast Update : Wed Feb 19 03:43:32 2025  
 Response via : Initial Calibration

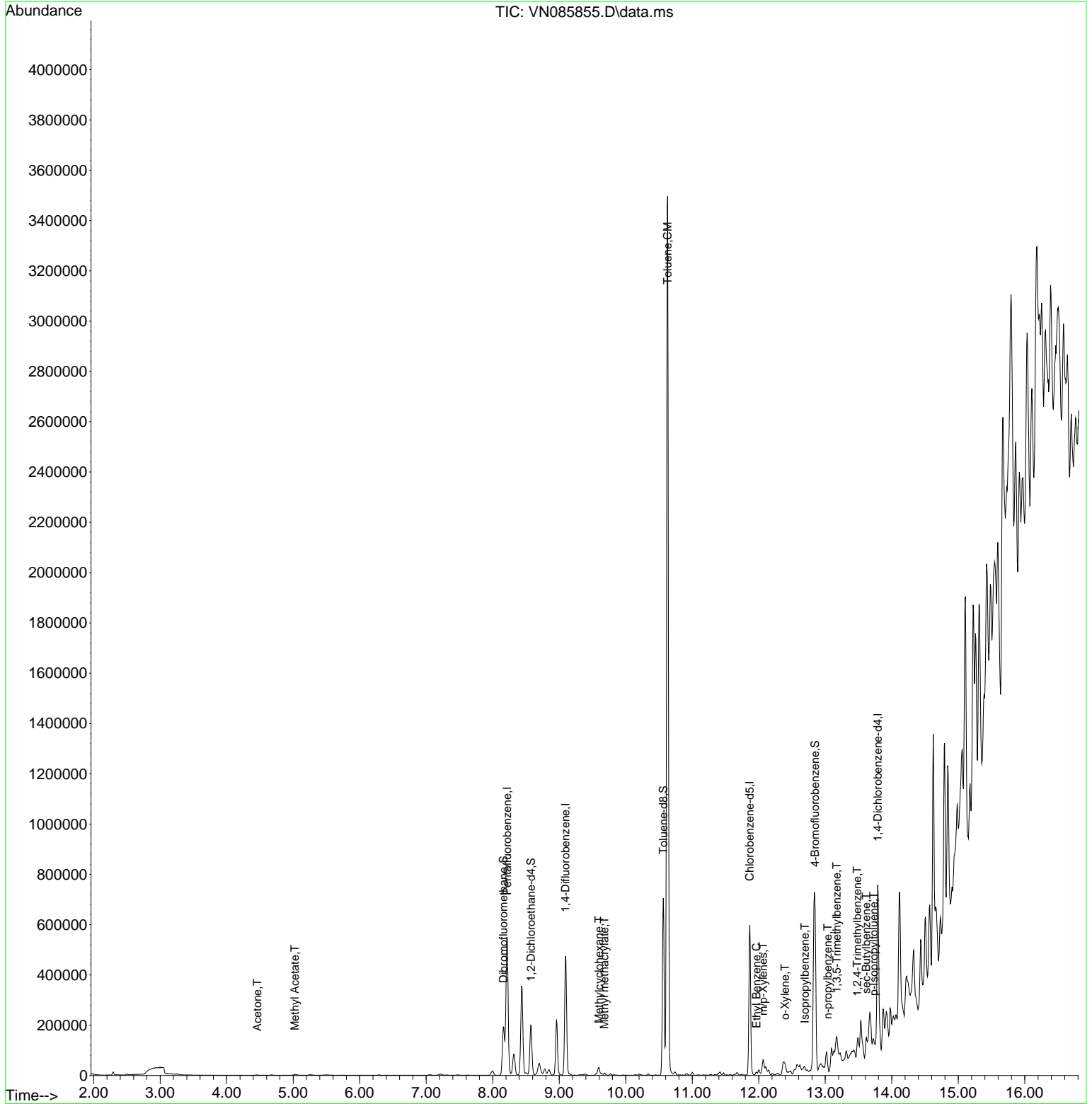
Compound	R.T.	QIon	Response	Conc	Units	Dev(Min)
-----						
Internal Standards						
1) Pentafluorobenzene	8.218	168	247400	50.000	ug/l	0.00
34) 1,4-Difluorobenzene	9.094	114	425435	50.000	ug/l	0.00
63) Chlorobenzene-d5	11.865	117	357661	50.000	ug/l	0.00
72) 1,4-Dichlorobenzene-d4	13.788	152	190072	50.000	ug/l	0.00
System Monitoring Compounds						
33) 1,2-Dichloroethane-d4	8.577	65	162275	50.593	ug/l	0.00
Spiked Amount	50.000	Range 74 - 125	Recovery	=	101.180%	
35) Dibromofluoromethane	8.159	113	140866	50.601	ug/l	0.00
Spiked Amount	50.000	Range 75 - 124	Recovery	=	101.200%	
50) Toluene-d8	10.565	98	490286	48.407	ug/l	0.00
Spiked Amount	50.000	Range 86 - 113	Recovery	=	96.820%	
62) 4-Bromofluorobenzene	12.847	95	187428	56.165	ug/l	0.00
Spiked Amount	50.000	Range 77 - 121	Recovery	=	112.320%	
Target Compounds						
						Qvalue
16) Acetone	4.459	43	3000	2.956	ug/l #	86
18) Methyl Acetate	5.024	43	8030	2.300	ug/l	98
39) Methylcyclohexane	9.594	83	11087	2.864	ug/l #	82
48) Methyl methacrylate	9.677	41	5563	2.310	ug/l	91
52) Toluene	10.630	92	1614063	218.054	ug/l	100
67) Ethyl Benzene	11.965	91	8560	0.667	ug/l	99
68) m/p-Xylenes	12.065	106	12337	2.531	ug/l	96
69) o-Xylene	12.394	106	5443	1.175	ug/l	79
73) Isopropylbenzene	12.694	105	6087	0.467	ug/l	98
78) n-propylbenzene	13.035	91	11698	0.784	ug/l	98
80) 1,3,5-Trimethylbenzene	13.171	105	10000	0.943	ug/l	92
84) 1,2,4-Trimethylbenzene	13.482	105	42350	4.035	ug/l	99
85) sec-Butylbenzene	13.618	105	23311	1.850	ug/l	91
86) p-Isopropyltoluene	13.729	119	13277	1.854	ug/l	92
-----						

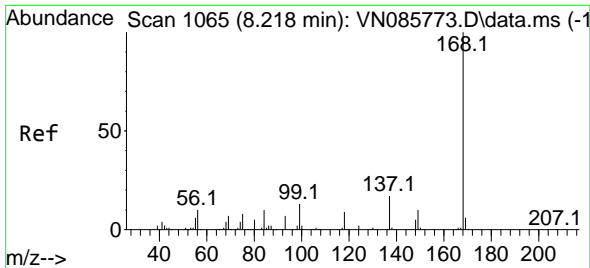
(#) = qualifier out of range (m) = manual integration (+) = signals summed

Data Path : Z:\voasrv\HPCHEM1\MSVOA\_N\Data\VN022525\  
 Data File : VN085855.D  
 Acq On : 25 Feb 2025 14:24  
 Operator : JC\MD  
 Sample : Q1395-01  
 Misc : 1.05g/10mL/100uL/5.00mL/MSVOA\_N/MEOH  
 ALS Vial : 11 Sample Multiplier: 1

Instrument :  
 MSVOA\_N  
 ClientSampleId :  
 BEL-25-0005

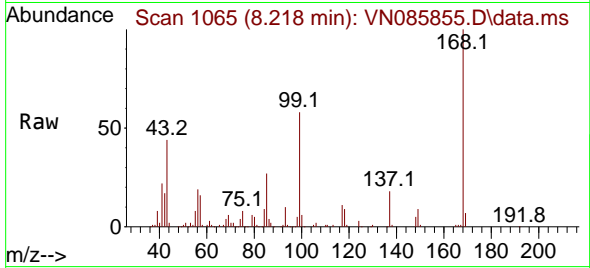
Quant Time: Feb 25 23:36:29 2025  
 Quant Method : Z:\voasrv\HPCHEM1\MSVOA\_N\methods\82N021825W.M  
 Quant Title : SW846 8260  
 QLast Update : Wed Feb 19 03:43:32 2025  
 Response via : Initial Calibration



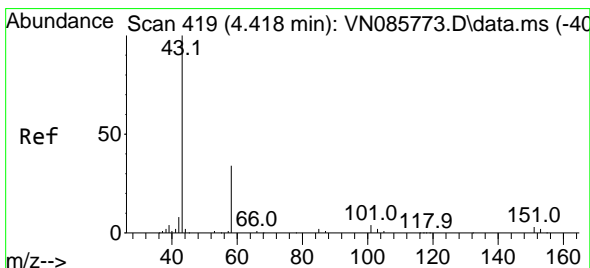
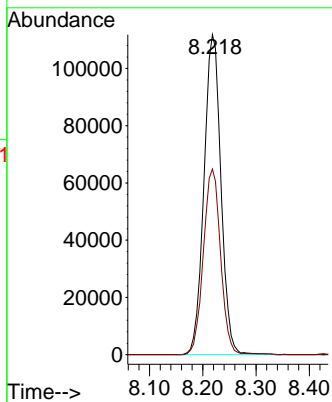
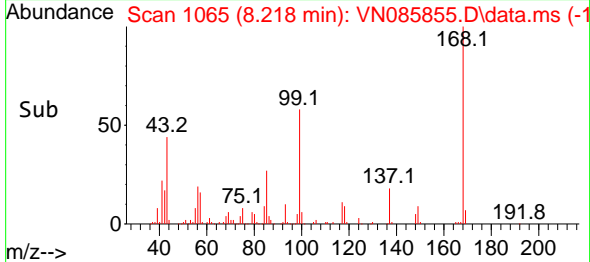


#1  
 Pentafluorobenzene  
 Concen: 50.000 ug/l  
 RT: 8.218 min Scan# 1065  
 Delta R.T. -0.000 min  
 Lab File: VN085855.D  
 Acq: 25 Feb 2025 14:24

Instrument : MSVOA\_N  
 ClientSampleId : BEL-25-0005

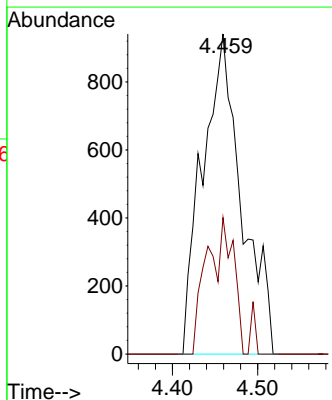
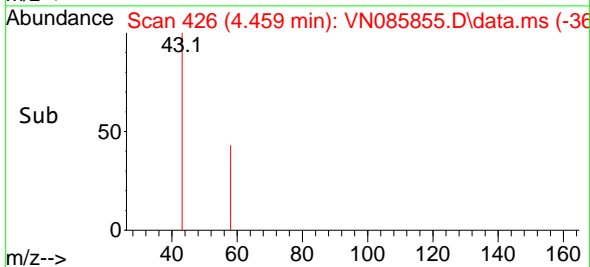
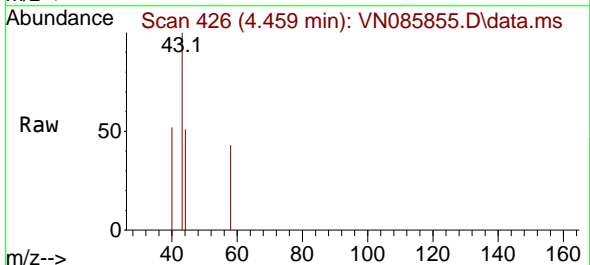


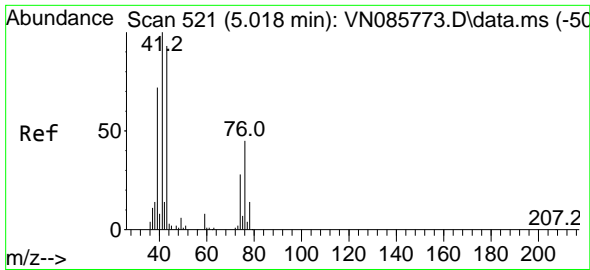
Tgt Ion:168 Resp: 247400  
 Ion Ratio Lower Upper  
 168 100  
 99 58.0 47.9 71.9



#16  
 Acetone  
 Concen: 2.956 ug/l  
 RT: 4.459 min Scan# 426  
 Delta R.T. 0.041 min  
 Lab File: VN085855.D  
 Acq: 25 Feb 2025 14:24

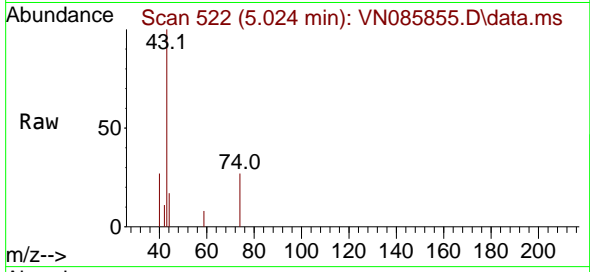
Tgt Ion: 43 Resp: 3000  
 Ion Ratio Lower Upper  
 43 100  
 58 42.6 27.5 41.3#



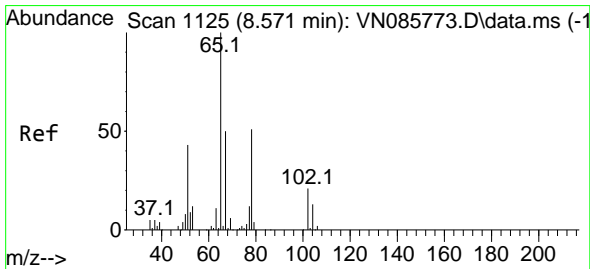
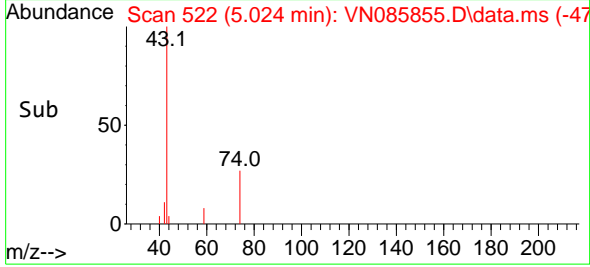
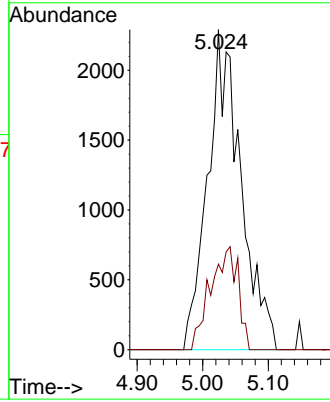


#18  
 Methyl Acetate  
 Concen: 2.300 ug/l  
 RT: 5.024 min Scan# 51  
 Delta R.T. 0.006 min  
 Lab File: VN085855.D  
 Acq: 25 Feb 2025 14:24

Instrument :  
 MSVOA\_N  
 ClientSampleId :  
 BEL-25-0005

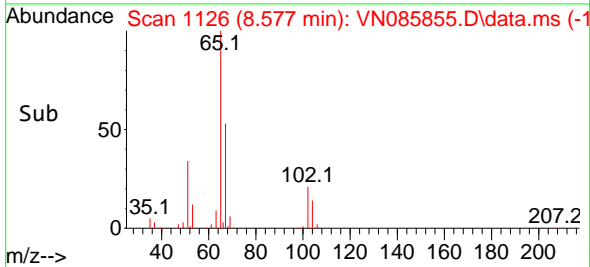
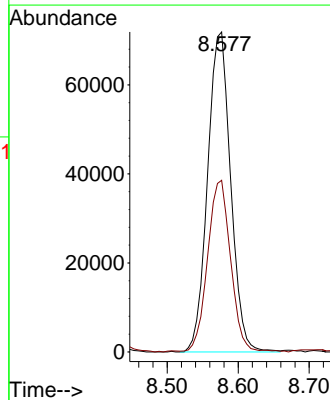
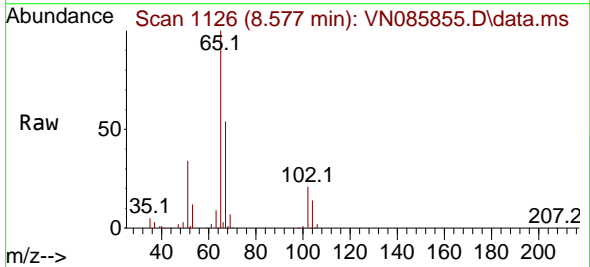


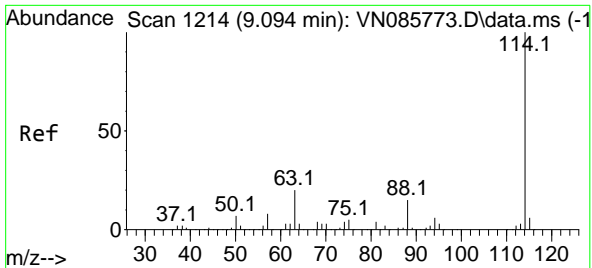
Tgt Ion: 43 Resp: 8030  
 Ion Ratio Lower Upper  
 43 100  
 74 26.7 22.2 33.4



#33  
 1,2-Dichloroethane-d4  
 Concen: 50.593 ug/l  
 RT: 8.577 min Scan# 1126  
 Delta R.T. 0.006 min  
 Lab File: VN085855.D  
 Acq: 25 Feb 2025 14:24

Tgt Ion: 65 Resp: 162275  
 Ion Ratio Lower Upper  
 65 100  
 67 53.7 0.0 106.2

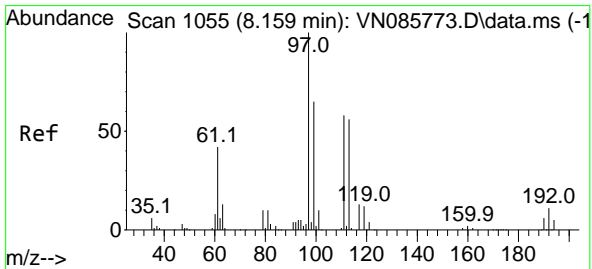
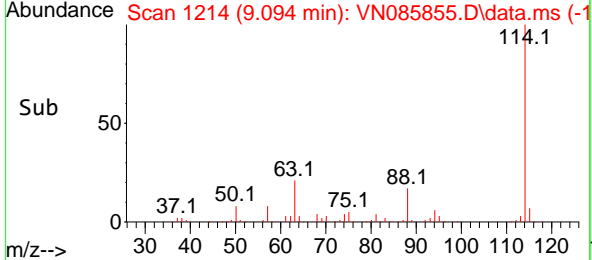
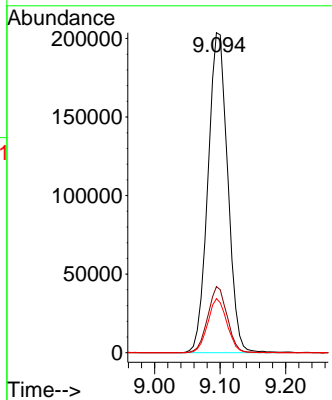
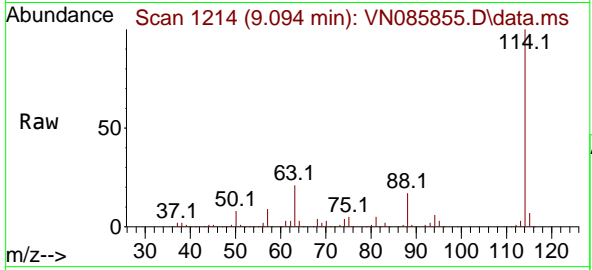




#34  
 1,4-Difluorobenzene  
 Concen: 50.000 ug/l  
 RT: 9.094 min Scan# 11  
 Delta R.T. 0.000 min  
 Lab File: VN085855.D  
 Acq: 25 Feb 2025 14:24

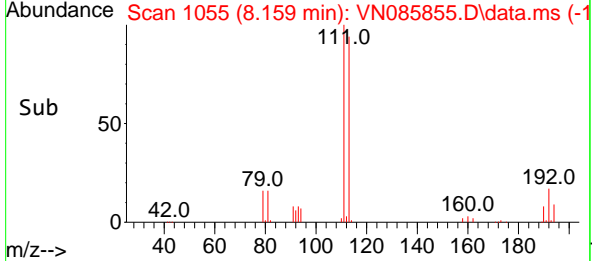
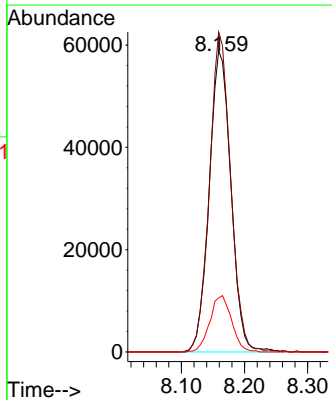
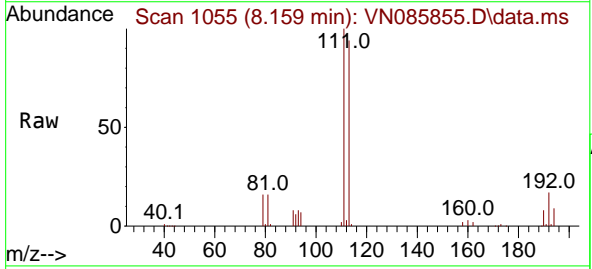
Instrument : MSVOA\_N  
 ClientSampleId : BEL-25-0005

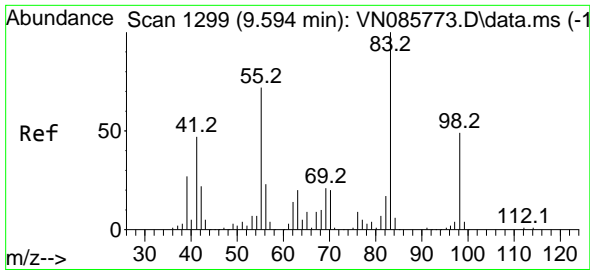
Tgt Ion	Resp	Lower	Upper
114	425435		
63	20.6	0.0	39.2
88	16.9	0.0	30.0



#35  
 Dibromofluoromethane  
 Concen: 50.601 ug/l  
 RT: 8.159 min Scan# 1055  
 Delta R.T. 0.000 min  
 Lab File: VN085855.D  
 Acq: 25 Feb 2025 14:24

Tgt Ion	Resp	Lower	Upper
113	140866		
111	103.5	82.2	123.4
192	18.8	14.7	22.1

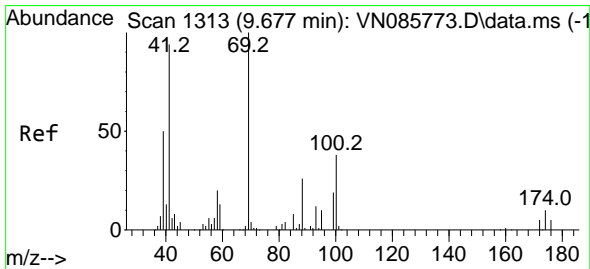
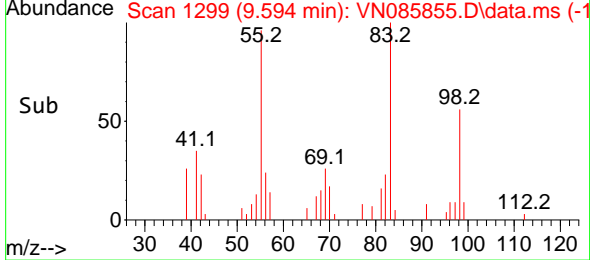
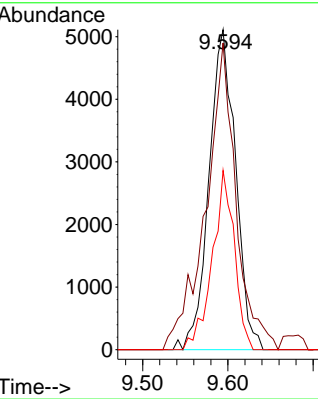
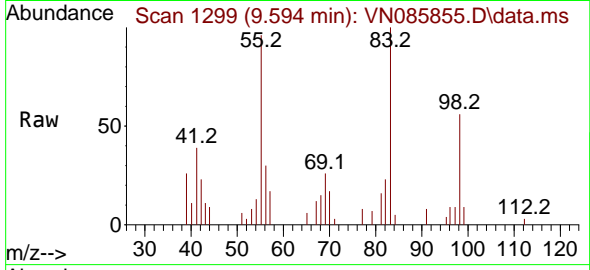




#39  
 Methylcyclohexane  
 Concen: 2.864 ug/l  
 RT: 9.594 min Scan# 11087  
 Delta R.T. 0.000 min  
 Lab File: VN085855.D  
 Acq: 25 Feb 2025 14:24

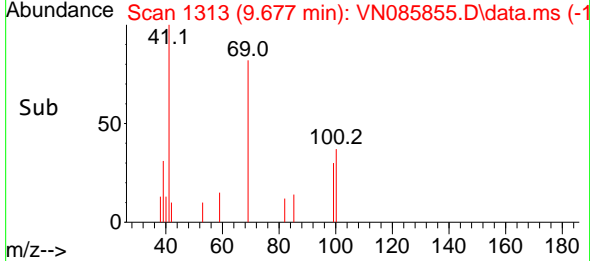
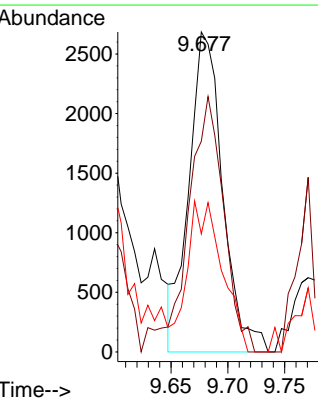
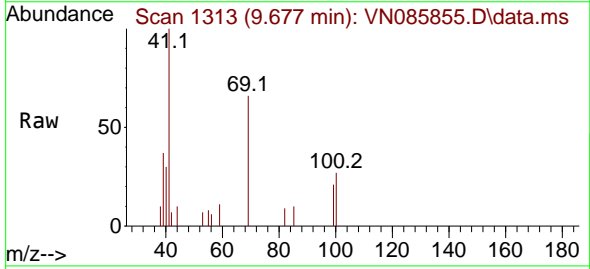
Instrument : MSVOA\_N  
 ClientSampleId : BEL-25-0005

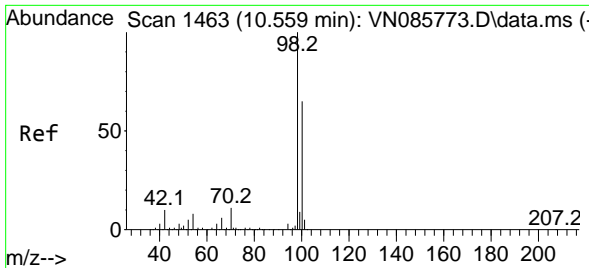
Tgt Ion	Resp	Lower	Upper
83	100		
55	91.8	57.5	86.3#
98	56.0	39.2	58.8



#48  
 Methyl methacrylate  
 Concen: 2.310 ug/l  
 RT: 9.677 min Scan# 1313  
 Delta R.T. 0.000 min  
 Lab File: VN085855.D  
 Acq: 25 Feb 2025 14:24

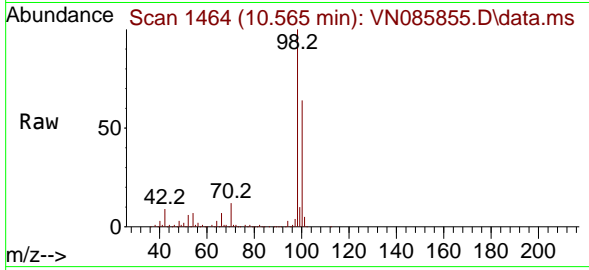
Tgt Ion	Resp	Lower	Upper
41	100		
69	84.6	76.0	114.0
39	48.7	42.3	63.5



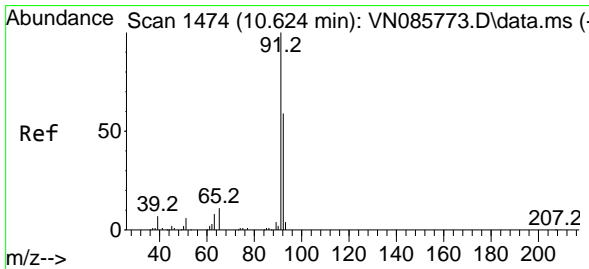
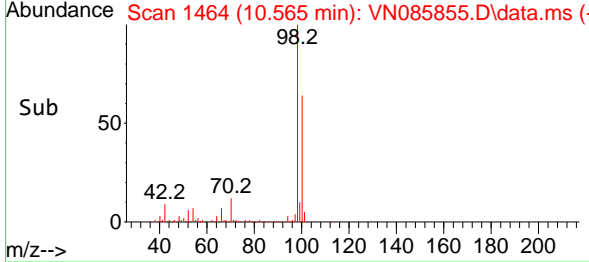
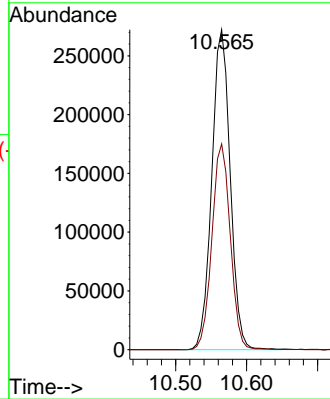


#50  
 Toluene-d8  
 Concen: 48.407 ug/l  
 RT: 10.565 min Scan# 1464  
 Delta R.T. 0.006 min  
 Lab File: VN085855.D  
 Acq: 25 Feb 2025 14:24

Instrument : MSVOA\_N  
 ClientSampleId : BEL-25-0005

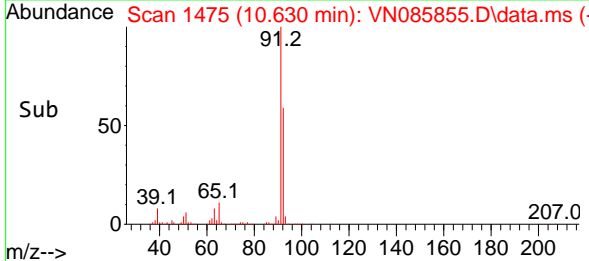
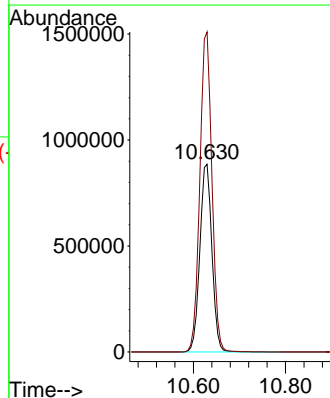
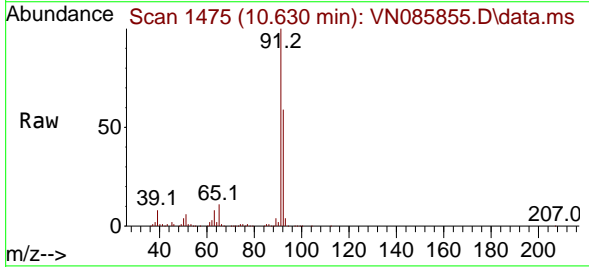


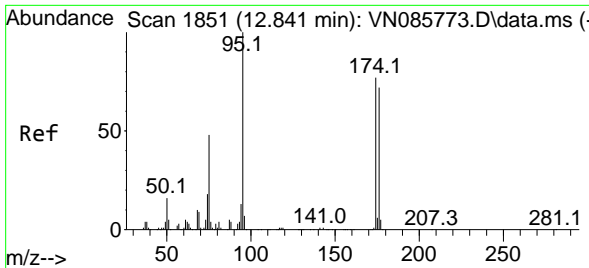
Tgt Ion: 98 Resp: 490286  
 Ion Ratio Lower Upper  
 98 100  
 100 64.1 52.1 78.1



#52  
 Toluene  
 Concen: 218.054 ug/l  
 RT: 10.630 min Scan# 1475  
 Delta R.T. 0.006 min  
 Lab File: VN085855.D  
 Acq: 25 Feb 2025 14:24

Tgt Ion: 92 Resp: 1614063  
 Ion Ratio Lower Upper  
 92 100  
 91 170.6 136.9 205.3



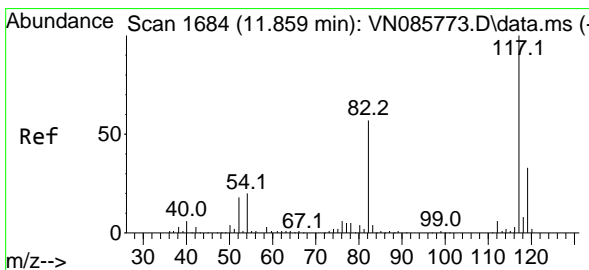
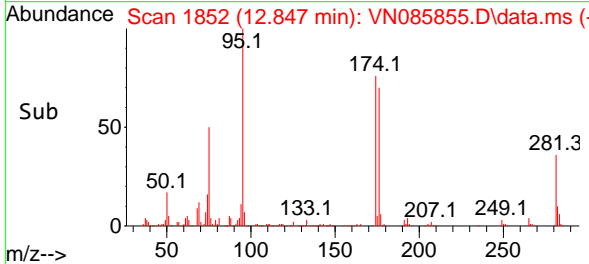
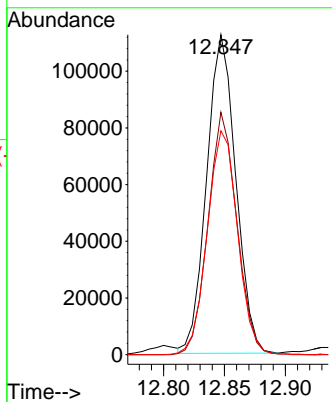
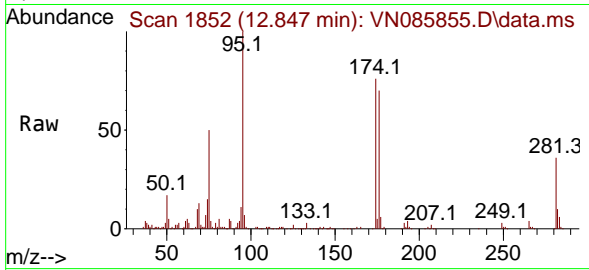


#62  
 4-Bromofluorobenzene  
 Concen: 56.165 ug/l  
 RT: 12.847 min Scan# 1851  
 Delta R.T. 0.006 min  
 Lab File: VN085855.D  
 Acq: 25 Feb 2025 14:24

Instrument : MSVOA\_N  
 ClientSampleId : BEL-25-0005

Tgt Ion: 95 Resp: 187428

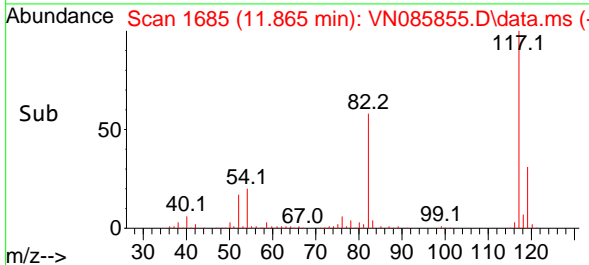
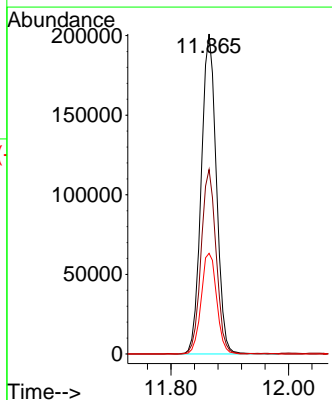
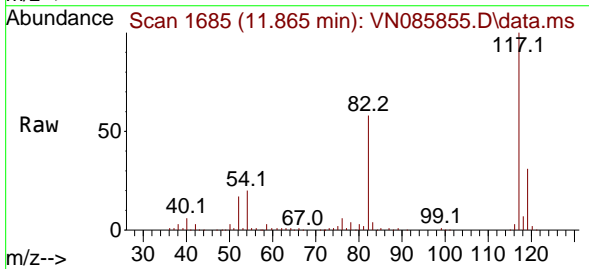
Ion	Ratio	Lower	Upper
95	100		
174	75.2	0.0	152.4
176	73.0	0.0	146.6



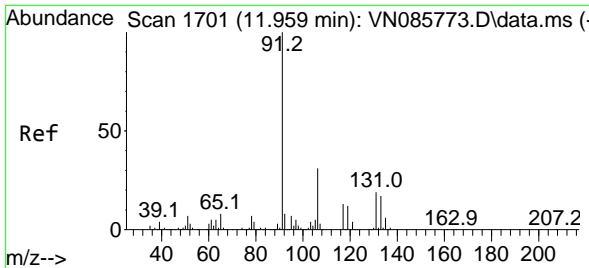
#63  
 Chlorobenzene-d5  
 Concen: 50.000 ug/l  
 RT: 11.865 min Scan# 1685  
 Delta R.T. 0.006 min  
 Lab File: VN085855.D  
 Acq: 25 Feb 2025 14:24

Tgt Ion: 117 Resp: 357661

Ion	Ratio	Lower	Upper
117	100		
82	57.7	45.7	68.5
119	31.5	26.2	39.2



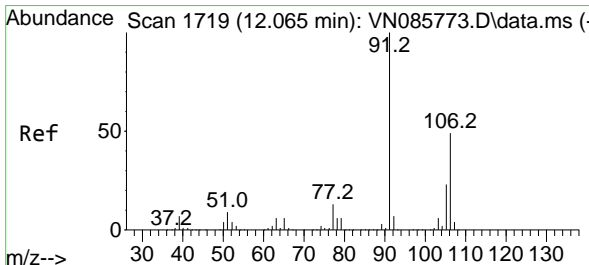
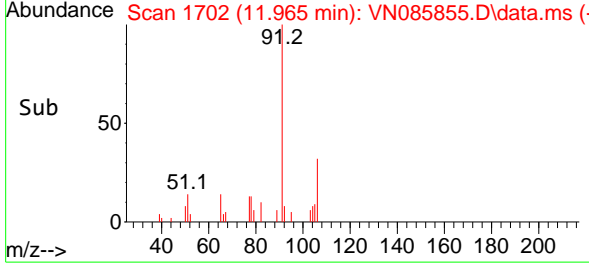
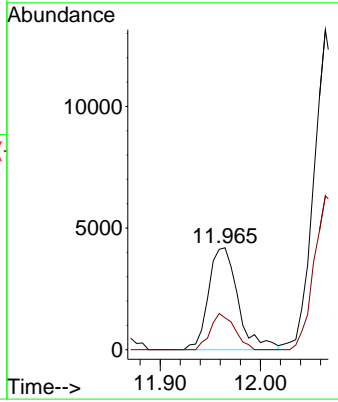
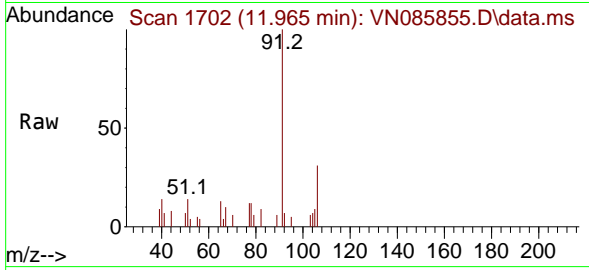




#67  
 Ethyl Benzene  
 Concen: 0.667 ug/l  
 RT: 11.965 min Scan# 1702  
 Delta R.T. 0.006 min  
 Lab File: VN085855.D  
 Acq: 25 Feb 2025 14:24

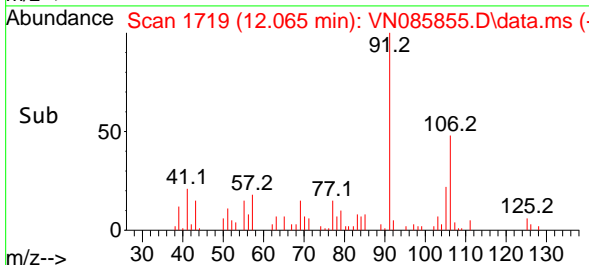
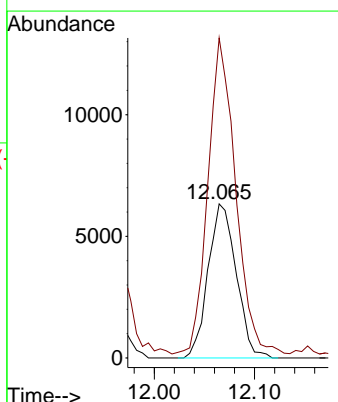
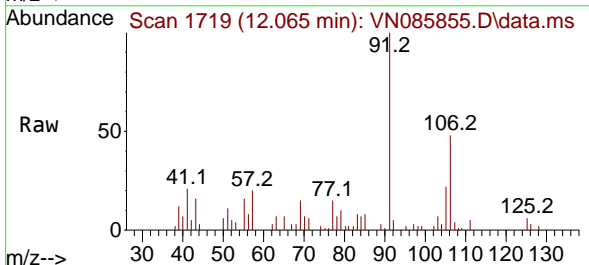
Instrument : MSVOA\_N  
 ClientSampleId : BEL-25-0005

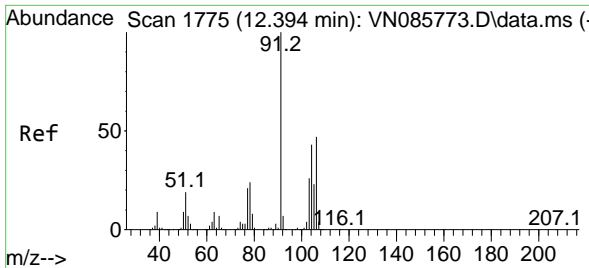
Tgt Ion: 91 Resp: 8560  
 Ion Ratio Lower Upper  
 91 100  
 106 31.2 24.7 37.1



#68  
 m/p-Xylenes  
 Concen: 2.531 ug/l  
 RT: 12.065 min Scan# 1719  
 Delta R.T. -0.000 min  
 Lab File: VN085855.D  
 Acq: 25 Feb 2025 14:24

Tgt Ion:106 Resp: 12337  
 Ion Ratio Lower Upper  
 106 100  
 91 210.4 163.3 244.9

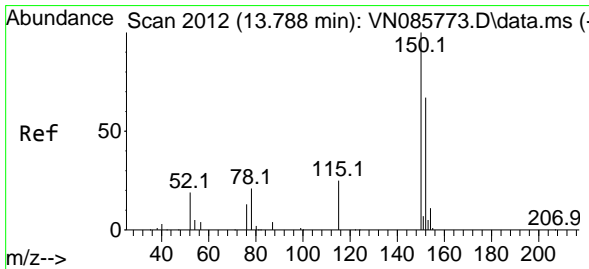
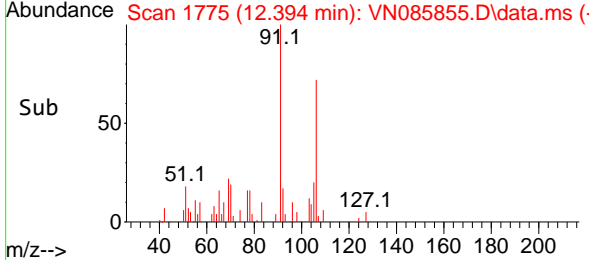
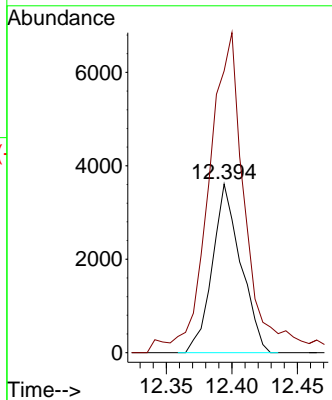
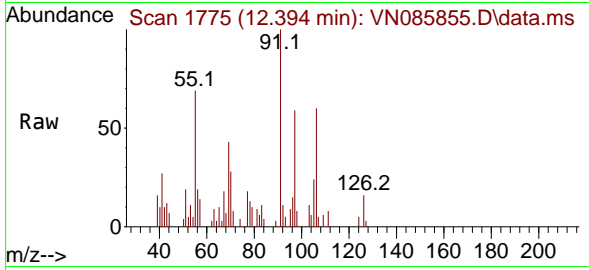




#69  
 o-Xylene  
 Concen: 1.175 ug/l  
 RT: 12.394 min Scan# 11  
 Delta R.T. 0.000 min  
 Lab File: VN085855.D  
 Acq: 25 Feb 2025 14:24

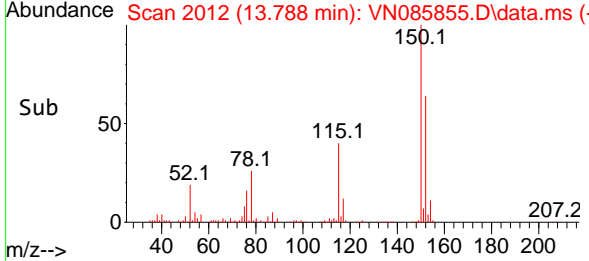
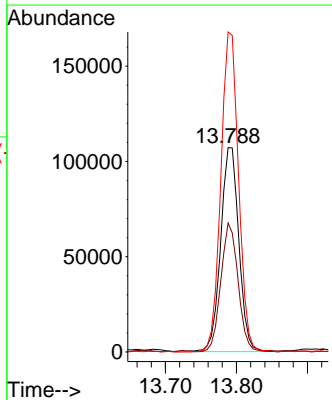
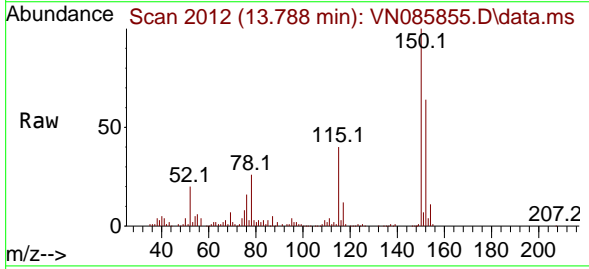
Instrument : MSVOA\_N  
 ClientSampleId : BEL-25-0005

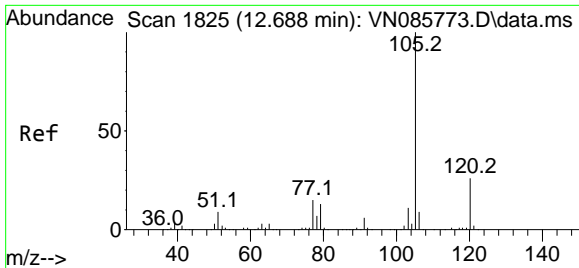
Tgt Ion:106 Resp: 5443  
 Ion Ratio Lower Upper  
 106 100  
 91 247.3 107.1 321.4



#72  
 1,4-Dichlorobenzene-d4  
 Concen: 50.000 ug/l  
 RT: 13.788 min Scan# 2012  
 Delta R.T. 0.000 min  
 Lab File: VN085855.D  
 Acq: 25 Feb 2025 14:24

Tgt Ion:152 Resp: 190072  
 Ion Ratio Lower Upper  
 152 100  
 115 60.1 30.4 91.3  
 150 152.7 0.0 345.4

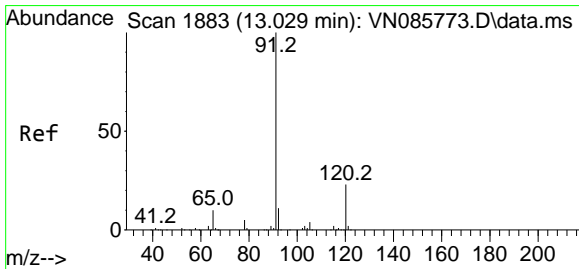
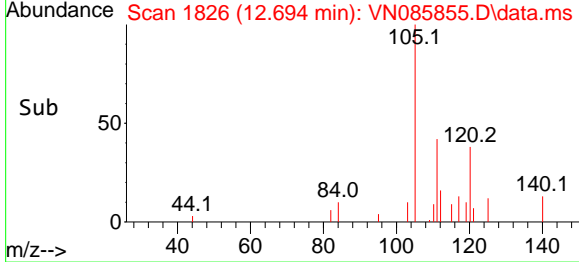
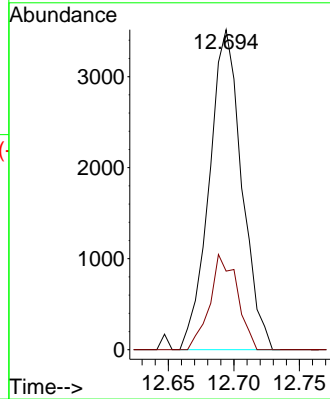
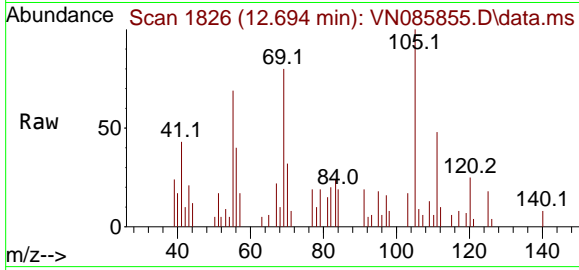




#73  
 Isopropylbenzene  
 Concen: 0.467 ug/l  
 RT: 12.694 min Scan# 1826  
 Delta R.T. 0.006 min  
 Lab File: VN085855.D  
 Acq: 25 Feb 2025 14:24

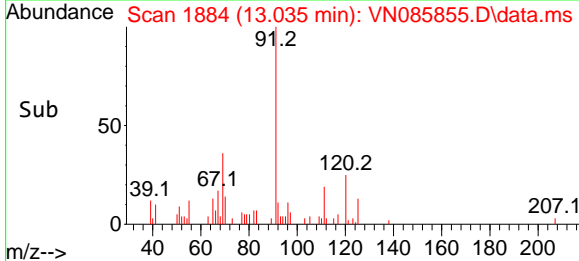
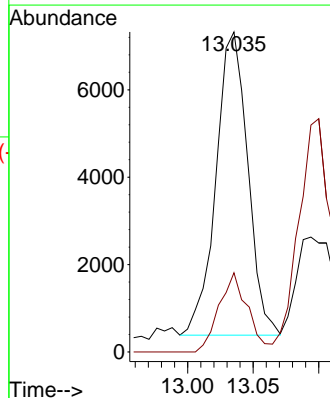
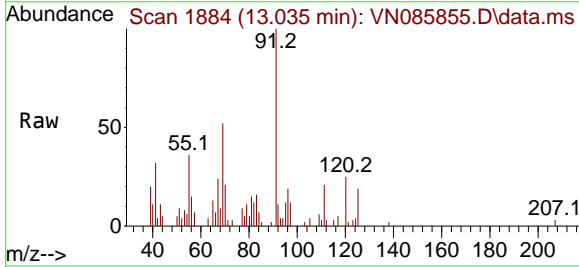
Instrument : MSVOA\_N  
 Client SampleId : BEL-25-0005

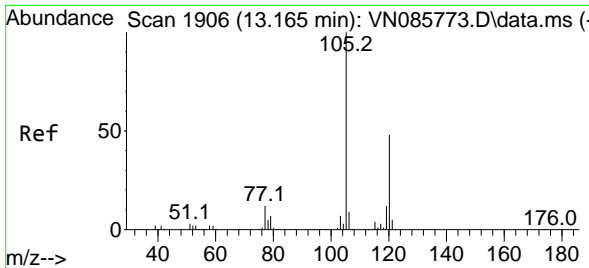
Tgt Ion: 105 Resp: 6087  
 Ion Ratio Lower Upper  
 105 100  
 120 25.1 13.0 39.0



#78  
 n-propylbenzene  
 Concen: 0.784 ug/l  
 RT: 13.035 min Scan# 1884  
 Delta R.T. 0.006 min  
 Lab File: VN085855.D  
 Acq: 25 Feb 2025 14:24

Tgt Ion: 91 Resp: 11698  
 Ion Ratio Lower Upper  
 91 100  
 120 23.7 11.3 33.8

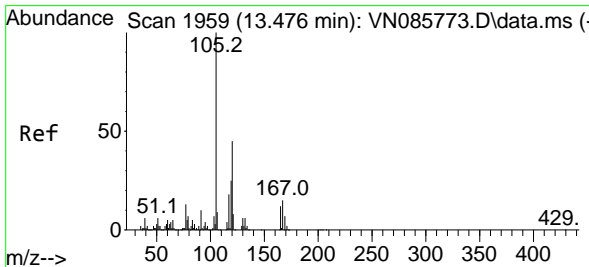
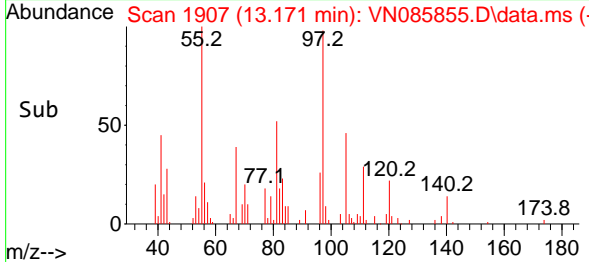
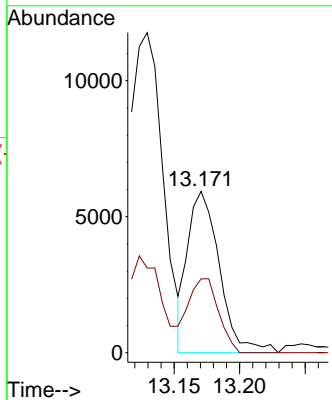
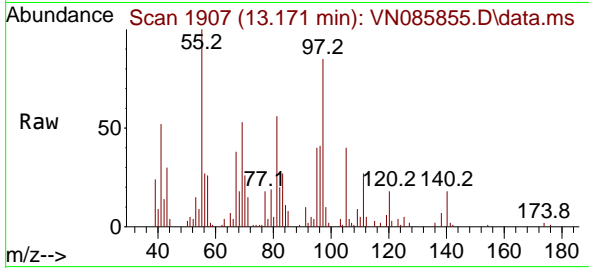




#80  
 1,3,5-Trimethylbenzene  
 Concen: 0.943 ug/l  
 RT: 13.171 min Scan# 1907  
 Delta R.T. 0.006 min  
 Lab File: VN085855.D  
 Acq: 25 Feb 2025 14:24

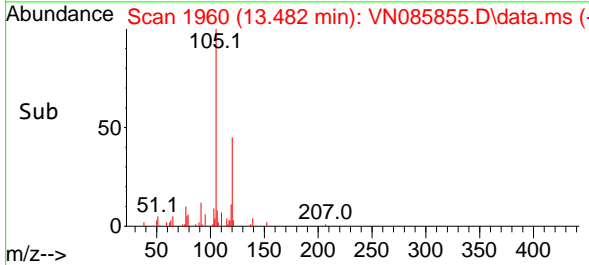
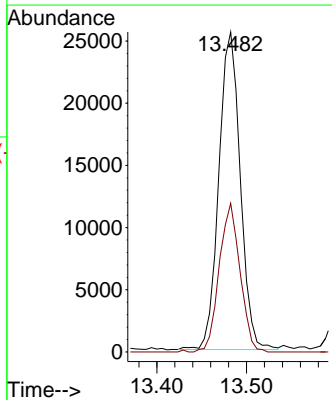
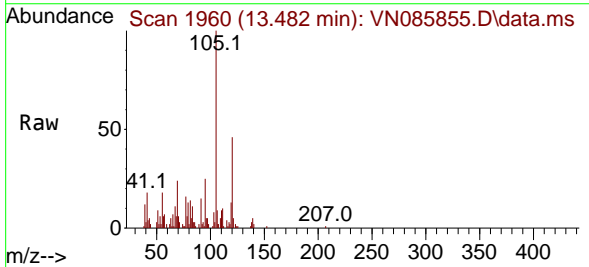
Instrument : MSVOA\_N  
 ClientSampleId : BEL-25-0005

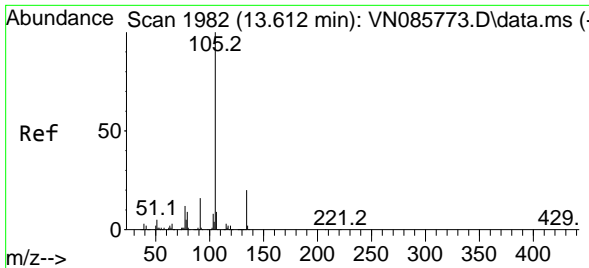
Tgt Ion:105 Resp: 10000  
 Ion Ratio Lower Upper  
 105 100  
 120 43.4 24.3 72.9



#84  
 1,2,4-Trimethylbenzene  
 Concen: 4.035 ug/l  
 RT: 13.482 min Scan# 1960  
 Delta R.T. 0.006 min  
 Lab File: VN085855.D  
 Acq: 25 Feb 2025 14:24

Tgt Ion:105 Resp: 42350  
 Ion Ratio Lower Upper  
 105 100  
 120 45.4 22.4 67.3

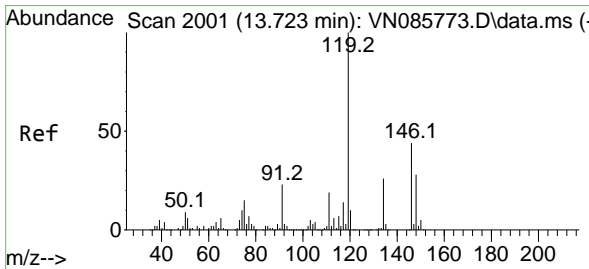
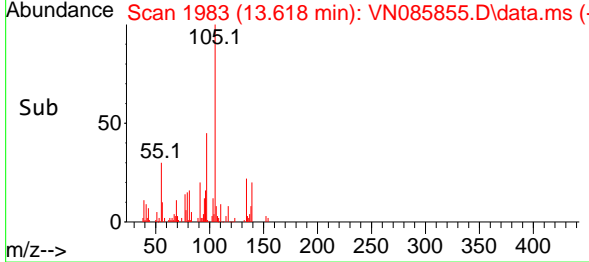
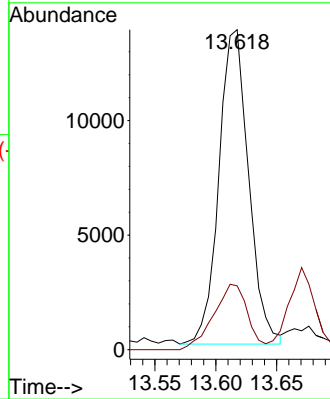
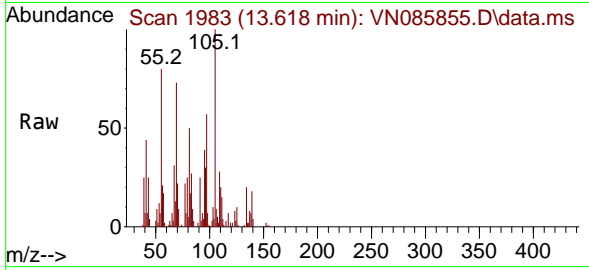




#85  
 sec-Butylbenzene  
 Concen: 1.850 ug/l  
 RT: 13.618 min Scan# 1982  
 Delta R.T. 0.006 min  
 Lab File: VN085855.D  
 Acq: 25 Feb 2025 14:24

Instrument : MSVOA\_N  
 ClientSampleId : BEL-25-0005

Tgt Ion:105 Resp: 23311  
 Ion Ratio Lower Upper  
 105 100  
 134 23.7 9.8 29.4



#86  
 p-Isopropyltoluene  
 Concen: 1.854 ug/l  
 RT: 13.729 min Scan# 2002  
 Delta R.T. 0.006 min  
 Lab File: VN085855.D  
 Acq: 25 Feb 2025 14:24

Tgt Ion:119 Resp: 13277  
 Ion Ratio Lower Upper  
 119 100  
 134 25.6 13.0 39.0  
 91 15.4 11.7 35.1

