

Data Path : Z:\voasrv\HPCHEM1\MSVOA\_N\Data\VN022624\  
 Data File : VN081193.D  
 Acq On : 26 Feb 2024 14:28  
 Operator : JC\MD  
 Sample : P1533-03  
 Misc : 5.0mL/MSVOA\_N/WATER  
 ALS Vial : 12 Sample Multiplier: 1

Instrument :  
 MSVOA\_N  
 ClientSampleId :  
 RW8-MW01D2-20240217

Quant Time: Feb 27 00:07:17 2024  
 Quant Method : Z:\voasrv\HPCHEM1\MSVOA\_N\methods\82N021624W.M  
 Quant Title : SW846 8260  
 QLast Update : Fri Feb 16 23:45:20 2024  
 Response via : Initial Calibration

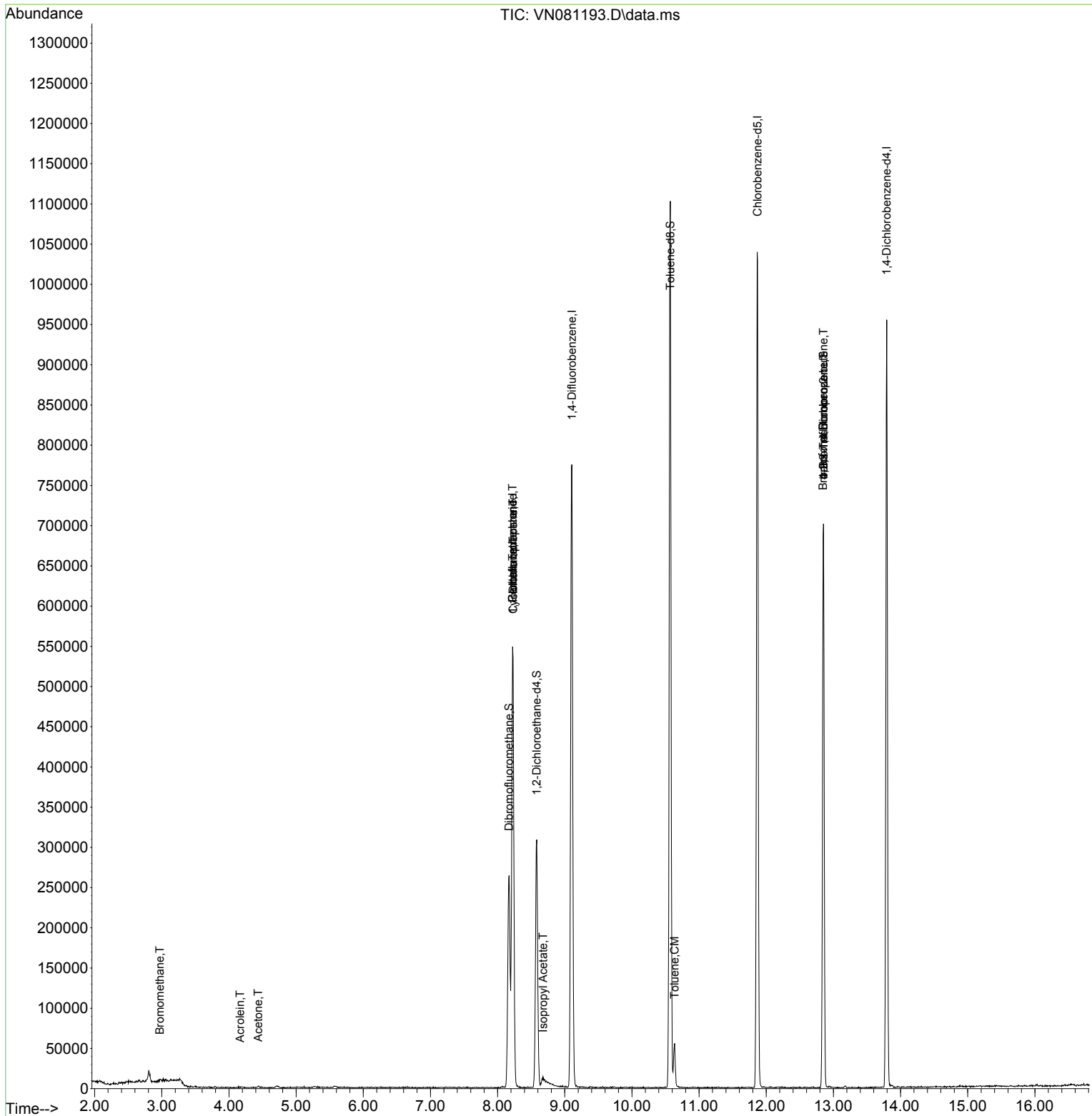
Compound	R.T.	QIon	Response	Conc	Units	Dev(Min)
-----						
Internal Standards						
1) Pentafluorobenzene	8.224	168	383962	50.000	ug/l	0.00
34) 1,4-Difluorobenzene	9.106	114	693195	50.000	ug/l	0.00
63) Chlorobenzene-d5	11.871	117	602453	50.000	ug/l	0.00
72) 1,4-Dichlorobenzene-d4	13.794	152	242160	50.000	ug/l	0.00
System Monitoring Compounds						
33) 1,2-Dichloroethane-d4	8.583	65	246303	52.335	ug/l	0.00
Spiked Amount	50.000	Range 74 - 125	Recovery	=	104.660%	
35) Dibromofluoromethane	8.171	113	192013	48.985	ug/l	0.00
Spiked Amount	50.000	Range 75 - 124	Recovery	=	97.980%	
50) Toluene-d8	10.571	98	757166	54.386	ug/l	0.00
Spiked Amount	50.000	Range 86 - 113	Recovery	=	108.780%	
62) 4-Bromofluorobenzene	12.853	95	247481	47.308	ug/l	0.00
Spiked Amount	50.000	Range 83 - 123	Recovery	=	94.620%	
Target Compounds						
						Qvalue
3) Chloromethane	2.365	50	1128	Below Cal	#	43
5) Bromomethane	2.971	94	1099	0.281	ug/l #	57
6) Chloroethane	3.130	64	170	Below Cal	#	42
13) Acrolein	4.165	56	191	0.412	ug/l #	71
16) Acetone	4.436	43	2982	1.610	ug/l #	44
20) Methylene Chloride	5.259	84	277	Below Cal	#	54
31) Cyclohexane	8.230	56	10412	1.281	ug/l #	1
36) 1,1-Dichloropropene	8.230	75	35115	5.229	ug/l #	50
38) Carbon Tetrachloride	8.224	117	41744	6.144	ug/l #	19
43) Isopropyl Acetate	8.677	43	8220	0.775	ug/l #	57
52) Toluene	10.635	92	22264	1.809	ug/l	99
71) Bromoform	12.847	173	1443	0.486	ug/l #	1
76) 1,2,3-Trichloropropane	12.853	75	133995	24.354	ug/l #	1
81) trans-1,4-Dichloro-2-b...	12.853	75	133995	62.684	ug/l #	14
-----						

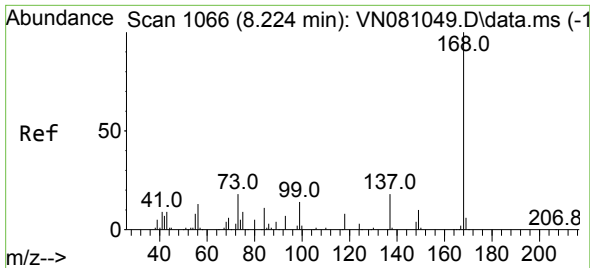
(#) = qualifier out of range (m) = manual integration (+) = signals summed

Data Path : Z:\voasrv\HPCHEM1\MSVOA\_N\Data\VN022624\  
 Data File : VN081193.D  
 Acq On : 26 Feb 2024 14:28  
 Operator : JC\MD  
 Sample : P1533-03  
 Misc : 5.0mL/MSVOA\_N/WATER  
 ALS Vial : 12 Sample Multiplier: 1

Instrument :  
 MSVOA\_N  
 ClientSampleId :  
 RW8-MW01D2-20240217

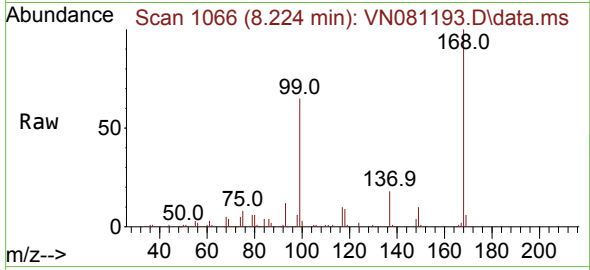
Quant Time: Feb 27 00:07:17 2024  
 Quant Method : Z:\voasrv\HPCHEM1\MSVOA\_N\methods\82N021624W.M  
 Quant Title : SW846 8260  
 QLast Update : Fri Feb 16 23:45:20 2024  
 Response via : Initial Calibration



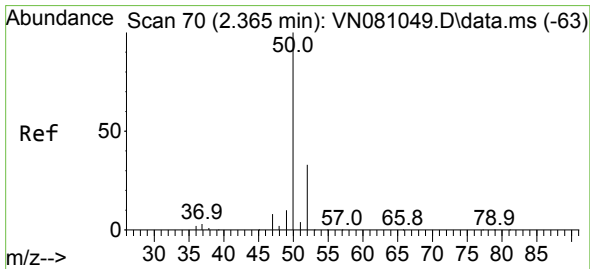
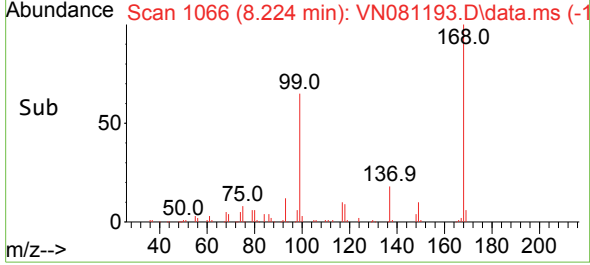
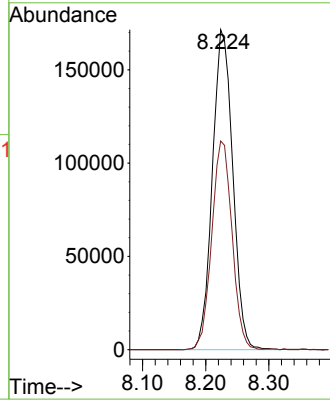


#1  
 Pentafluorobenzene  
 Concen: 50.000 ug/l  
 RT: 8.224 min Scan# 10  
 Delta R.T. -0.000 min  
 Lab File: VN081193.D  
 Acq: 26 Feb 2024 14:28

Instrument :  
 MSVOA\_N  
 ClientSampleId :  
 RW8-MW01D2-20240217

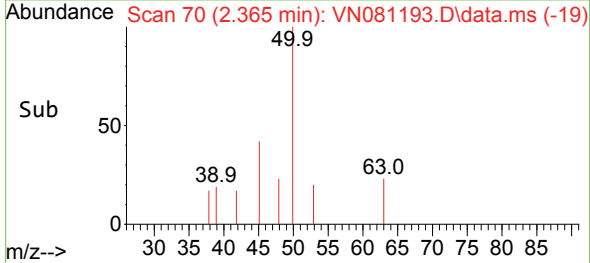
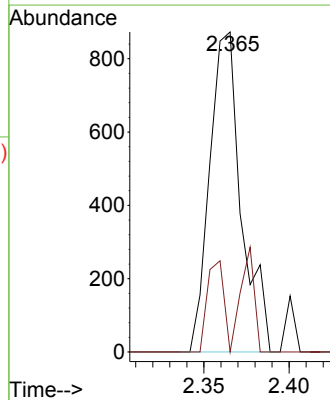
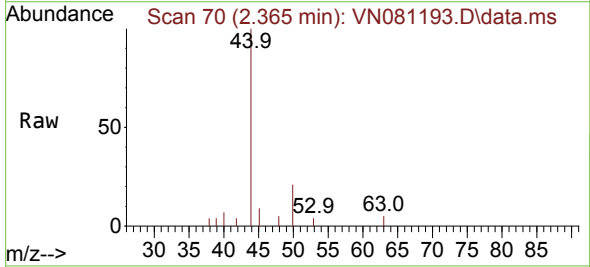


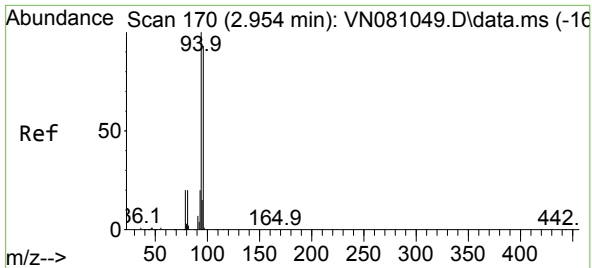
Tgt Ion:168 Resp: 383962  
 Ion Ratio Lower Upper  
 168 100  
 99 65.2 59.9 89.9



#3  
 Chloromethane  
 Concen: Below Cal  
 RT: 2.365 min Scan# 70  
 Delta R.T. 0.000 min  
 Lab File: VN081193.D  
 Acq: 26 Feb 2024 14:28

Tgt Ion: 50 Resp: 1128  
 Ion Ratio Lower Upper  
 50 100  
 52 0.0 25.0 37.4#

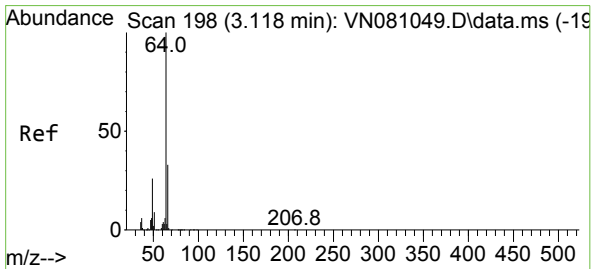
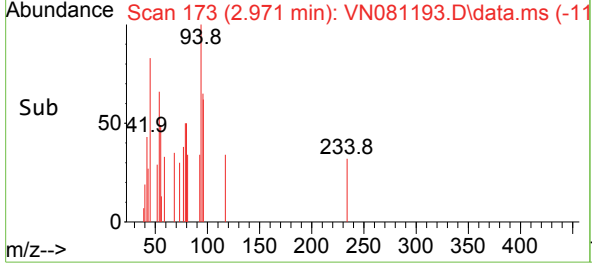
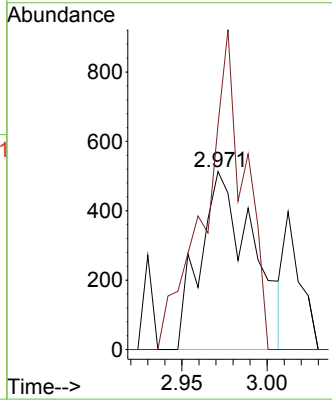
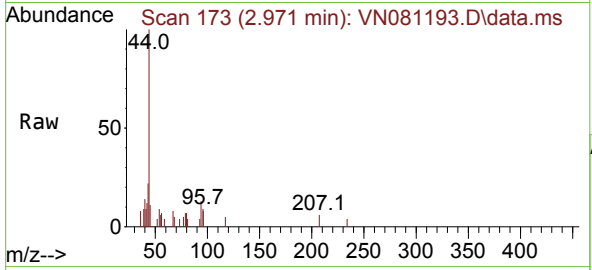




#5  
 Bromomethane  
 Concen: 0.281 ug/l  
 RT: 2.971 min Scan# 11  
 Delta R.T. 0.017 min  
 Lab File: VN081193.D  
 Acq: 26 Feb 2024 14:28

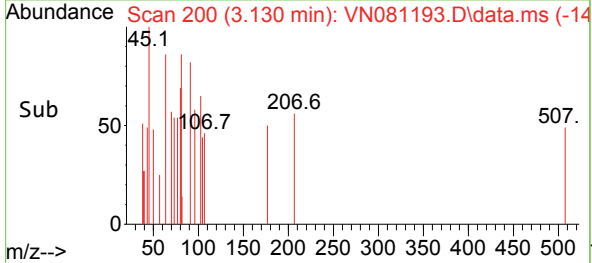
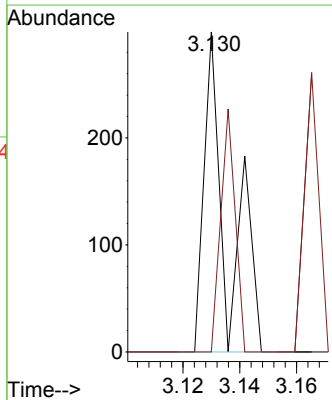
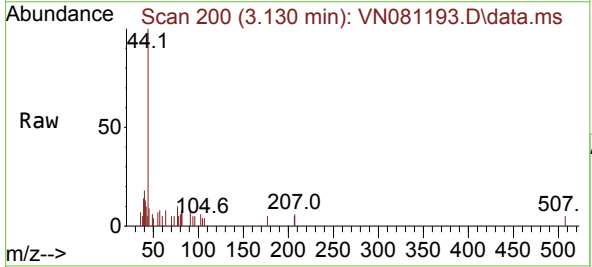
Instrument : MSVOA\_N  
 ClientSampleId : RW8-MW01D2-20240217

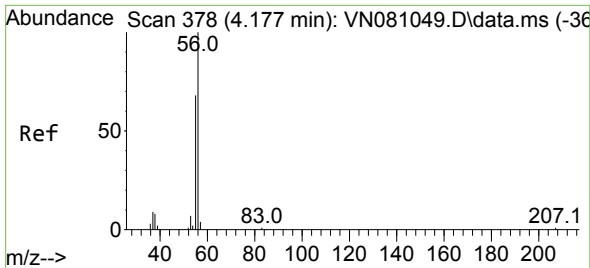
Tgt Ion: 94 Resp: 1099  
 Ion Ratio Lower Upper  
 94 100  
 96 126.3 69.2 103.8#



#6  
 Chloroethane  
 Concen: Below Cal  
 RT: 3.130 min Scan# 200  
 Delta R.T. 0.012 min  
 Lab File: VN081193.D  
 Acq: 26 Feb 2024 14:28

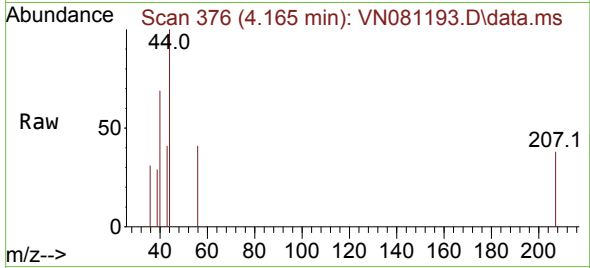
Tgt Ion: 64 Resp: 170  
 Ion Ratio Lower Upper  
 64 100  
 66 0.0 26.4 39.6#



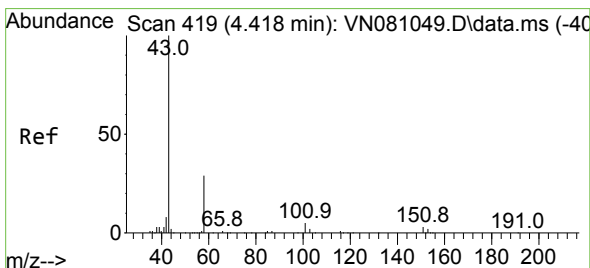
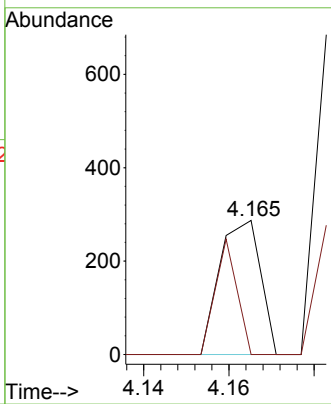
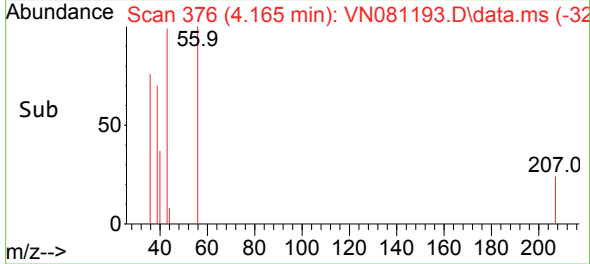


#13  
 Acrolein  
 Concen: 0.412 ug/l  
 RT: 4.165 min Scan# 31  
 Delta R.T. -0.012 min  
 Lab File: VN081193.D  
 Acq: 26 Feb 2024 14:28

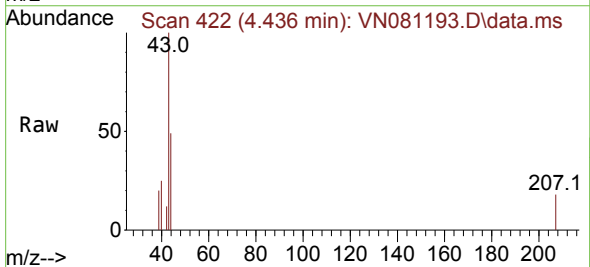
Instrument : MSVOA\_N  
 ClientSampleId : RW8-MW01D2-20240217



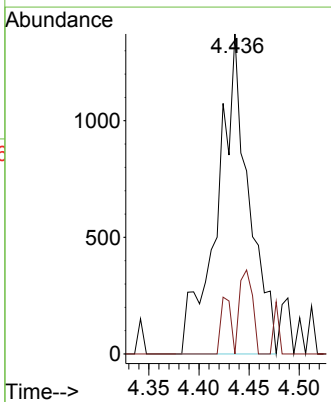
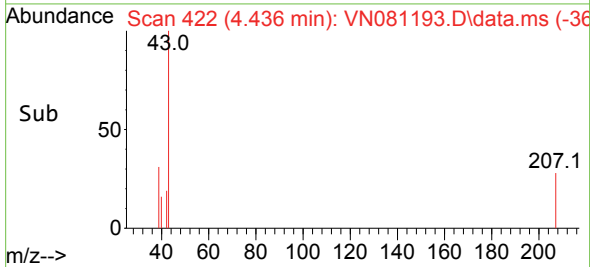
Tgt Ion: 56 Resp: 191  
 Ion Ratio Lower Upper  
 56 100  
 55 45.5 55.3 82.9#

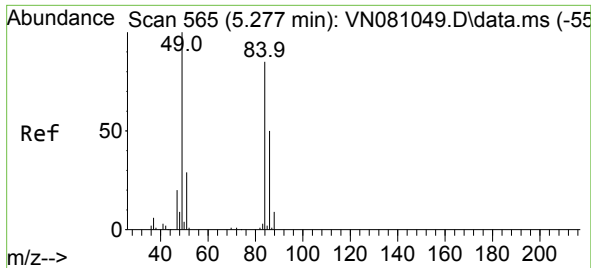


#16  
 Acetone  
 Concen: 1.610 ug/l  
 RT: 4.436 min Scan# 422  
 Delta R.T. 0.018 min  
 Lab File: VN081193.D  
 Acq: 26 Feb 2024 14:28



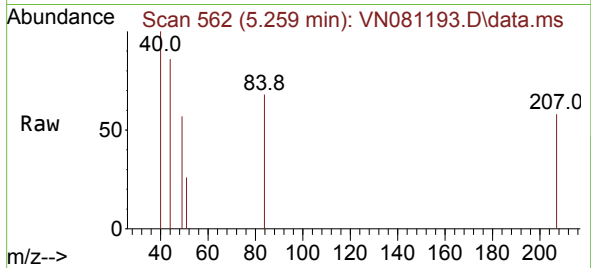
Tgt Ion: 43 Resp: 2982  
 Ion Ratio Lower Upper  
 43 100  
 58 0.0 24.8 37.2#





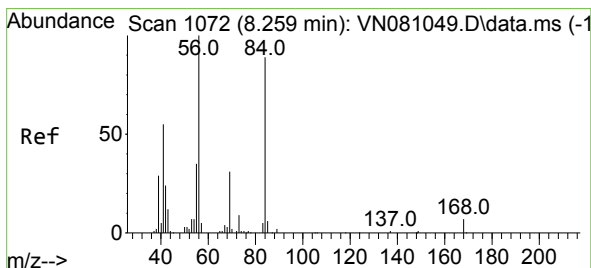
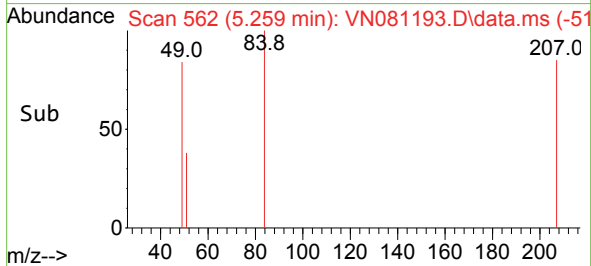
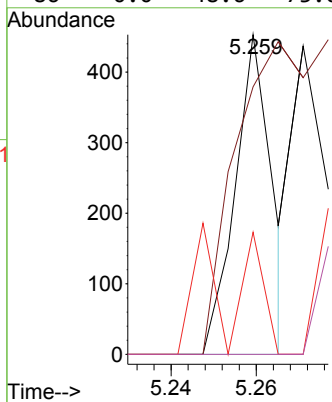
#20  
Methylene Chloride  
Concen: Below Cal  
RT: 5.259 min Scan# 51  
Delta R.T. -0.018 min  
Lab File: VN081193.D  
Acq: 26 Feb 2024 14:28

Instrument : MSVOA\_N  
ClientSampleId : RW8-MW01D2-20240217



Tgt Ion: 84 Resp: 277

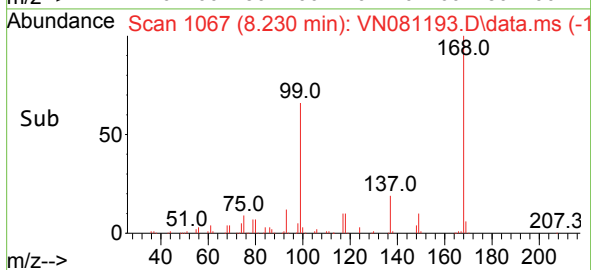
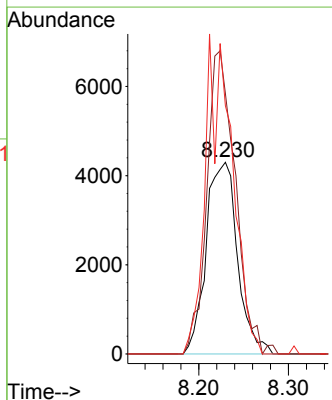
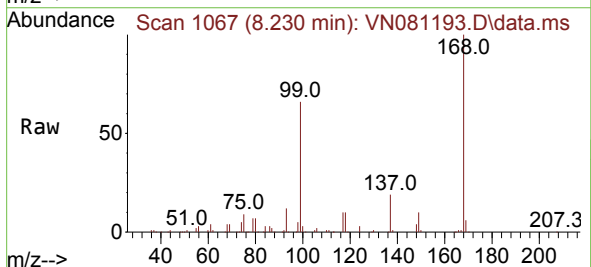
Ion	Ratio	Lower	Upper
84	100		
49	83.7	108.1	162.1#
51	38.2	32.9	49.3
86	0.0	48.6	73.0#

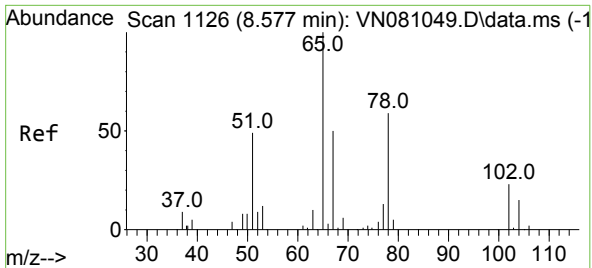


#31  
Cyclohexane  
Concen: 1.281 ug/l  
RT: 8.230 min Scan# 1067  
Delta R.T. -0.029 min  
Lab File: VN081193.D  
Acq: 26 Feb 2024 14:28

Tgt Ion: 56 Resp: 10412

Ion	Ratio	Lower	Upper
56	100		
69	135.9	20.1	30.1#
84	129.4	56.9	85.3#

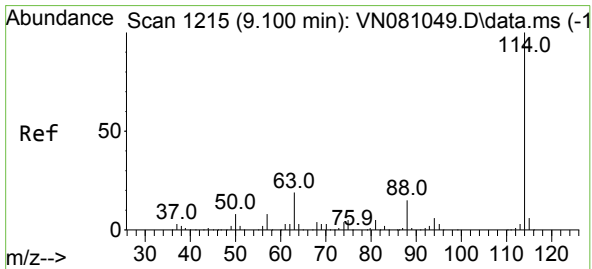
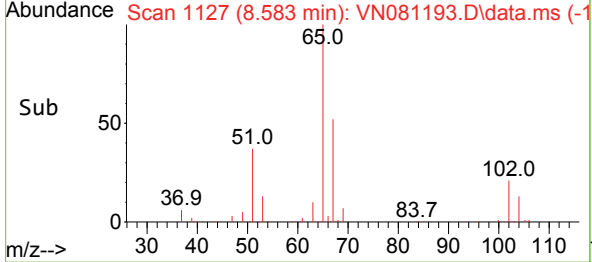
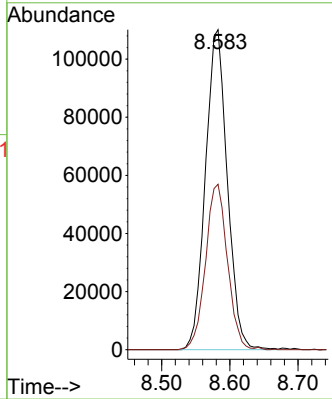
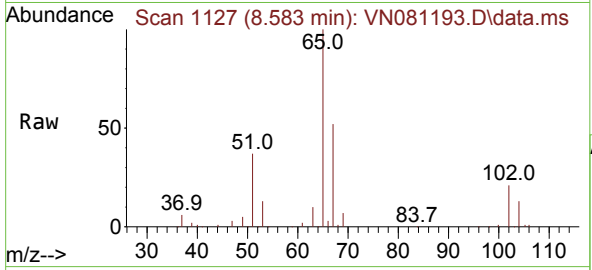




#33  
 1,2-Dichloroethane-d4  
 Concen: 52.335 ug/l  
 RT: 8.583 min Scan# 1127  
 Delta R.T. 0.006 min  
 Lab File: VN081193.D  
 Acq: 26 Feb 2024 14:28

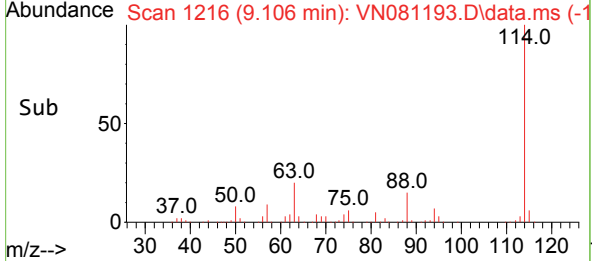
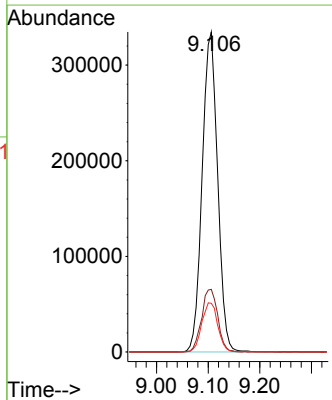
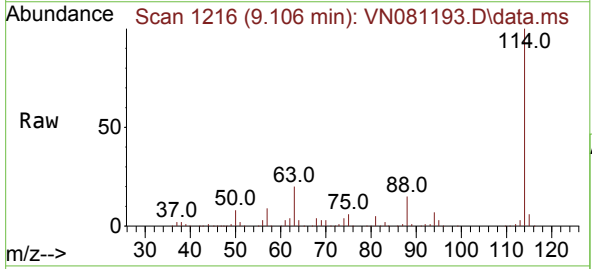
Instrument : MSVOA\_N  
 ClientSampleId : RW8-MW01D2-20240217

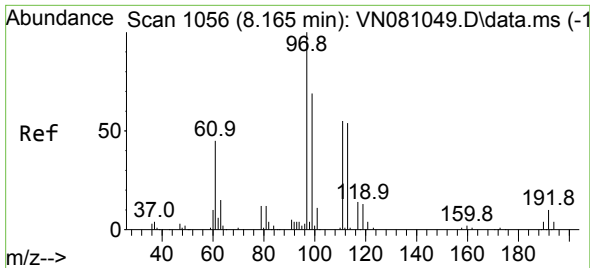
Tgt Ion: 65 Resp: 246303  
 Ion Ratio Lower Upper  
 65 100  
 67 51.8 0.0 102.4



#34  
 1,4-Difluorobenzene  
 Concen: 50.000 ug/l  
 RT: 9.106 min Scan# 1216  
 Delta R.T. 0.006 min  
 Lab File: VN081193.D  
 Acq: 26 Feb 2024 14:28

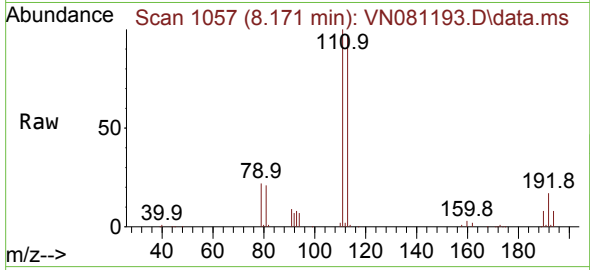
Tgt Ion:114 Resp: 693195  
 Ion Ratio Lower Upper  
 114 100  
 63 19.5 0.0 48.0  
 88 15.2 0.0 34.8





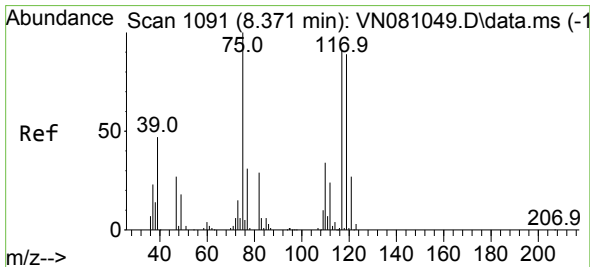
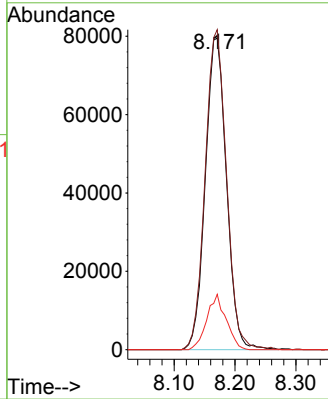
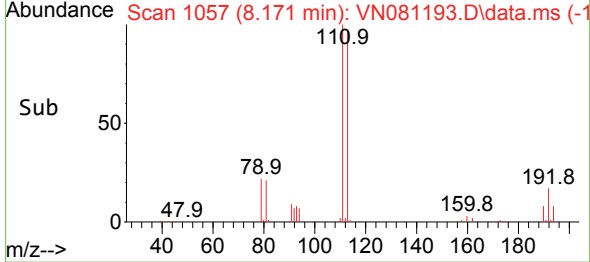
#35  
 Dibromofluoromethane  
 Concen: 48.985 ug/l  
 RT: 8.171 min Scan# 1057  
 Delta R.T. 0.006 min  
 Lab File: VN081193.D  
 Acq: 26 Feb 2024 14:28

Instrument : MSVOA\_N  
 ClientSampleId : RW8-MW01D2-20240217

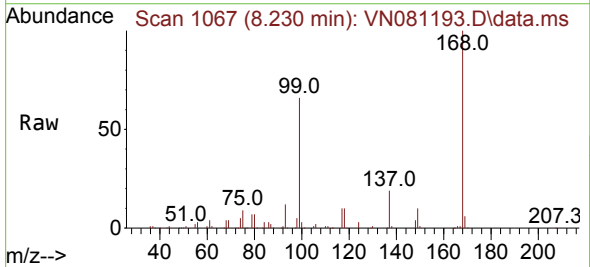


Tgt Ion: 113 Resp: 192013

Ion	Ratio	Lower	Upper
113	100		
111	103.7	82.2	123.4
192	16.2	12.5	18.7

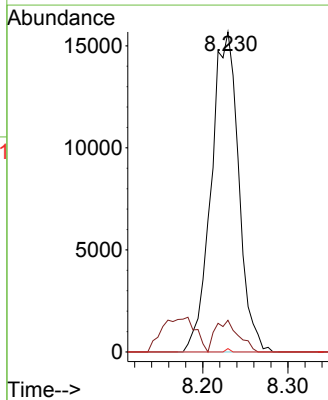
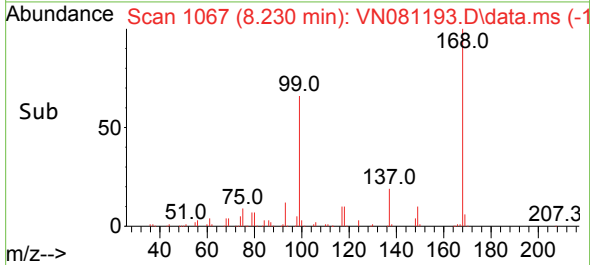


#36  
 1,1-Dichloropropene  
 Concen: 5.229 ug/l  
 RT: 8.230 min Scan# 1067  
 Delta R.T. -0.141 min  
 Lab File: VN081193.D  
 Acq: 26 Feb 2024 14:28

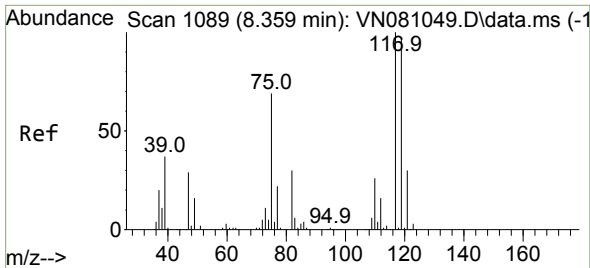


Tgt Ion: 75 Resp: 35115

Ion	Ratio	Lower	Upper
75	100		
110	8.4	16.0	48.0#
77	0.2	25.8	38.6#





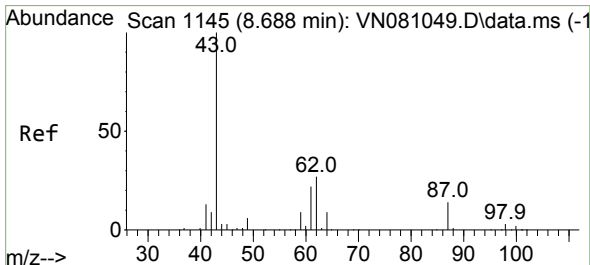
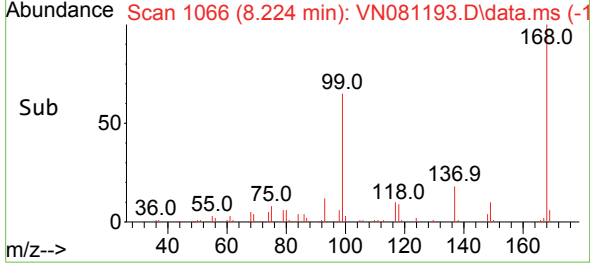
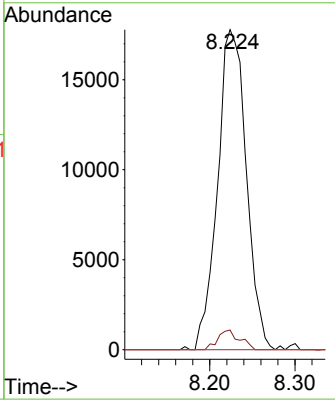
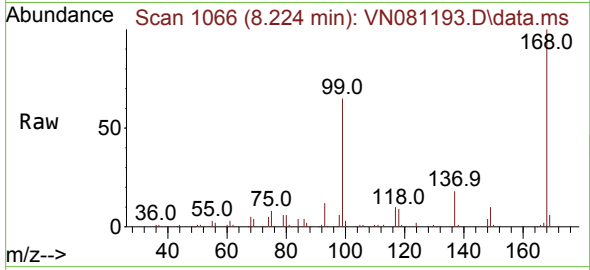


#38  
 Carbon Tetrachloride  
 Concen: 6.144 ug/l  
 RT: 8.224 min Scan# 1066  
 Delta R.T. -0.135 min  
 Lab File: VN081193.D  
 Acq: 26 Feb 2024 14:28

Instrument : MSVOA\_N  
 ClientSampleId : RW8-MW01D2-20240217

Tgt Ion: 117 Resp: 41744

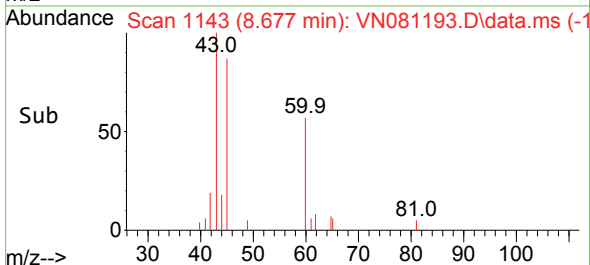
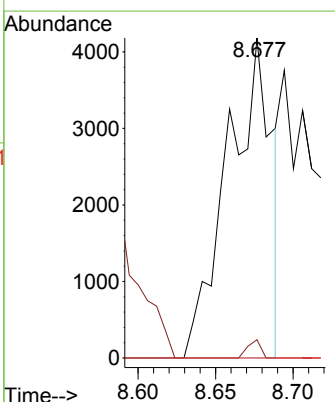
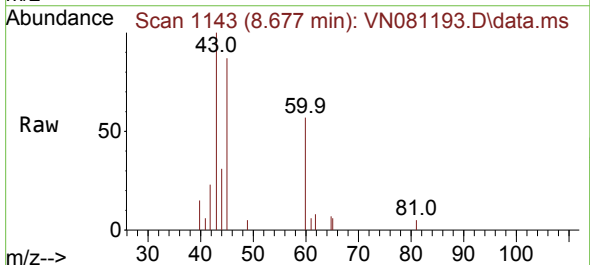
Ion	Ratio	Lower	Upper
117	100		
119	6.1	73.4	110.2#
121	0.0	24.4	36.6#

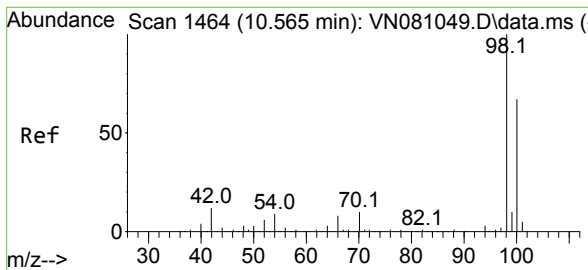


#43  
 Isopropyl Acetate  
 Concen: 0.775 ug/l  
 RT: 8.677 min Scan# 1143  
 Delta R.T. -0.012 min  
 Lab File: VN081193.D  
 Acq: 26 Feb 2024 14:28

Tgt Ion: 43 Resp: 8220

Ion	Ratio	Lower	Upper
43	100		
61	0.0	19.9	29.9#
87	0.0	9.0	13.6#

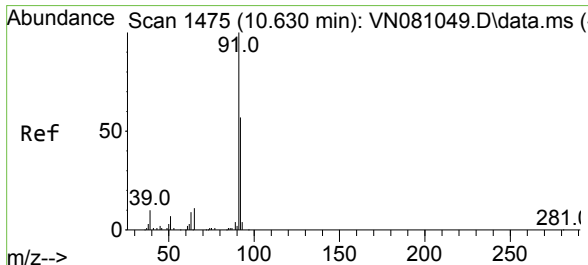
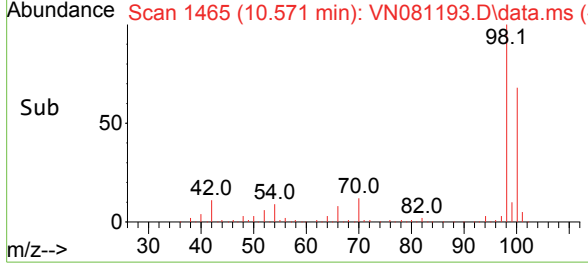
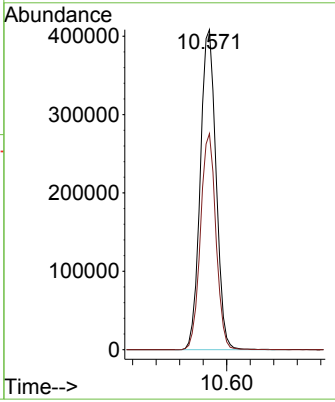
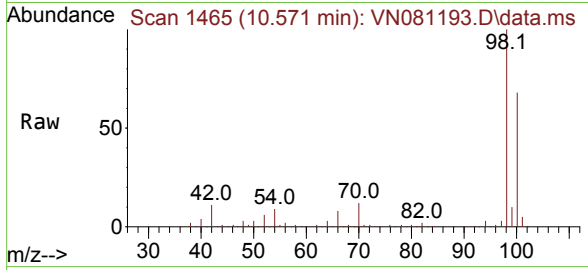




#50  
 Toluene-d8  
 Concen: 54.386 ug/l  
 RT: 10.571 min Scan# 1465  
 Delta R.T. 0.006 min  
 Lab File: VN081193.D  
 Acq: 26 Feb 2024 14:28

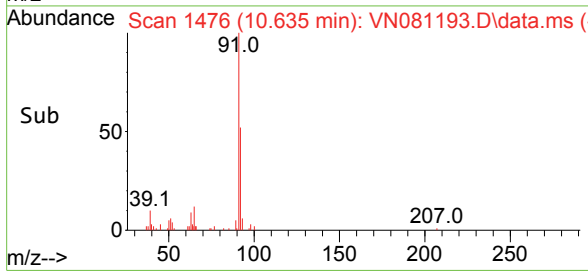
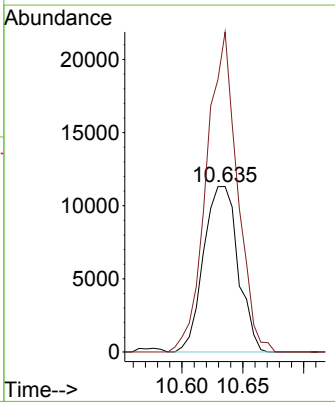
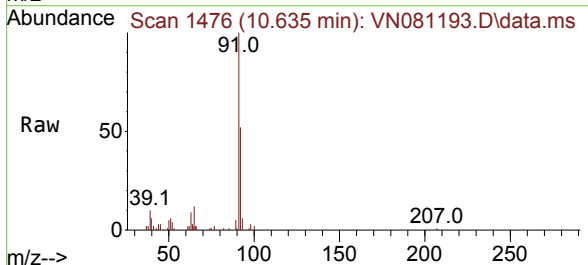
Instrument : MSVOA\_N  
 ClientSampleId : RW8-MW01D2-20240217

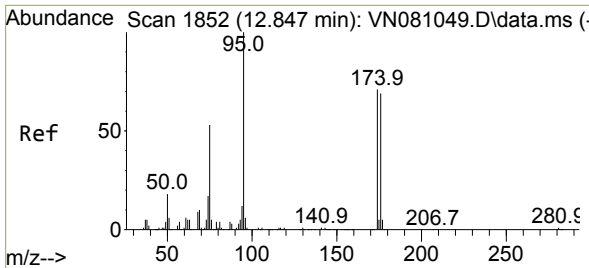
Tgt Ion: 98 Resp: 757166  
 Ion Ratio Lower Upper  
 98 100  
 100 66.2 51.4 77.0



#52  
 Toluene  
 Concen: 1.809 ug/l  
 RT: 10.635 min Scan# 1476  
 Delta R.T. 0.006 min  
 Lab File: VN081193.D  
 Acq: 26 Feb 2024 14:28

Tgt Ion: 92 Resp: 22264  
 Ion Ratio Lower Upper  
 92 100  
 91 173.5 139.4 209.0



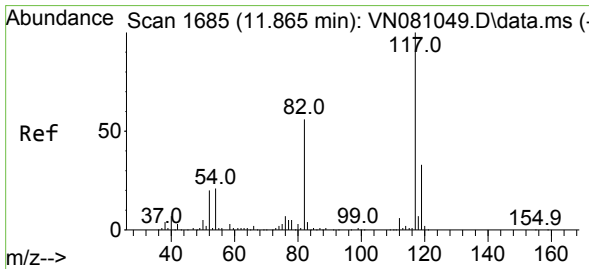
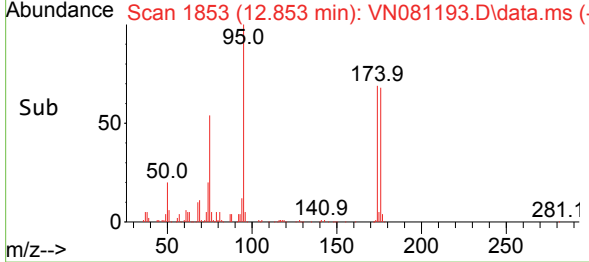
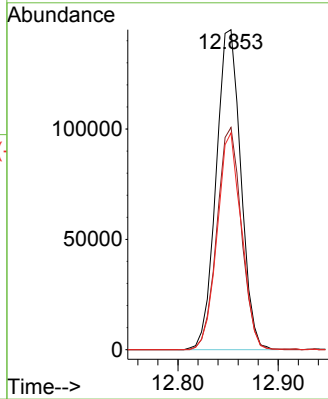
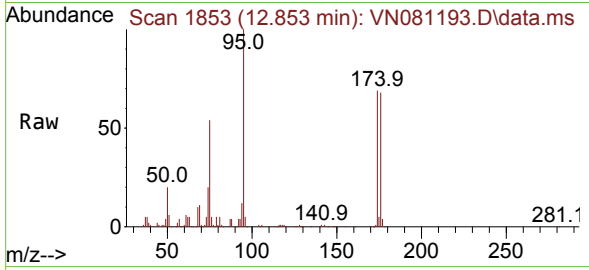


#62  
 4-Bromofluorobenzene  
 Concen: 47.308 ug/l  
 RT: 12.853 min Scan# 1853  
 Delta R.T. 0.006 min  
 Lab File: VN081193.D  
 Acq: 26 Feb 2024 14:28

Instrument : MSVOA\_N  
 ClientSampleId : RW8-MW01D2-20240217

Tgt Ion: 95 Resp: 247481

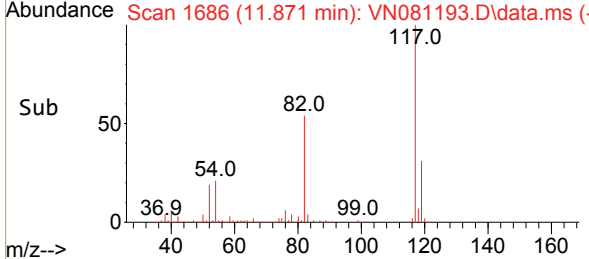
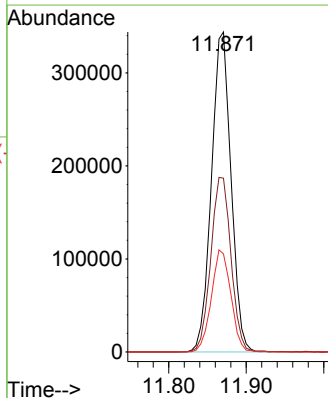
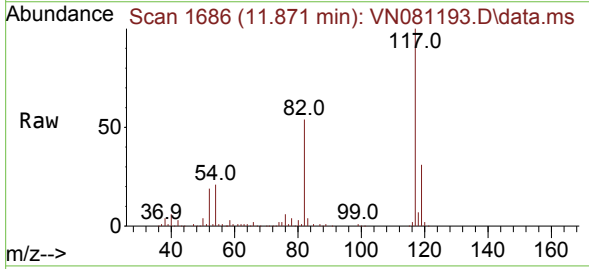
Ion	Ratio	Lower	Upper
95	100		
174	69.0	0.0	120.4
176	66.6	0.0	121.0

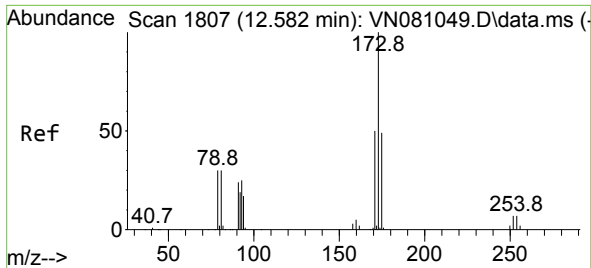


#63  
 Chlorobenzene-d5  
 Concen: 50.000 ug/l  
 RT: 11.871 min Scan# 1686  
 Delta R.T. 0.006 min  
 Lab File: VN081193.D  
 Acq: 26 Feb 2024 14:28

Tgt Ion: 117 Resp: 602453

Ion	Ratio	Lower	Upper
117	100		
82	54.3	52.7	79.1
119	30.7	25.3	37.9

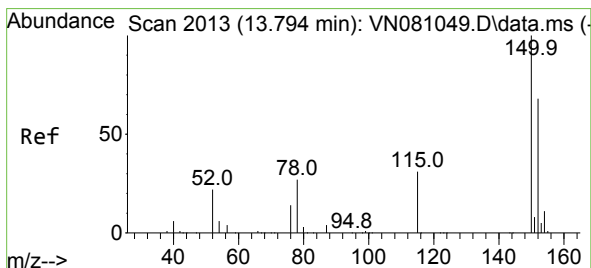
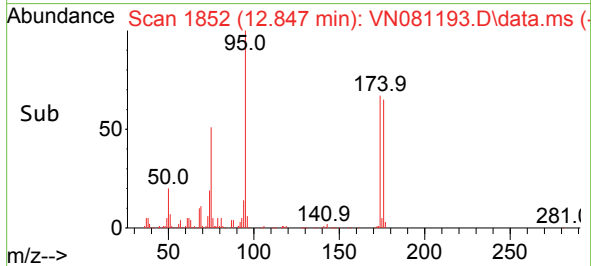
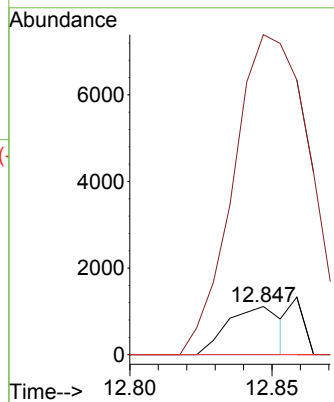
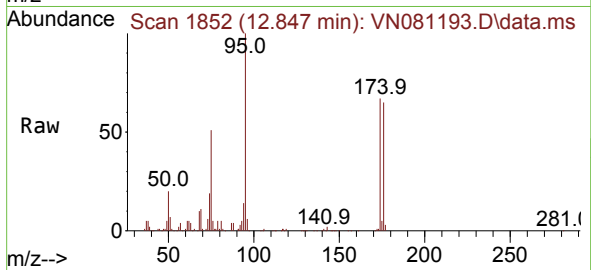




#71  
 Bromoform  
 Concen: 0.486 ug/l  
 RT: 12.847 min Scan# 11  
 Delta R.T. 0.265 min  
 Lab File: VN081193.D  
 Acq: 26 Feb 2024 14:28

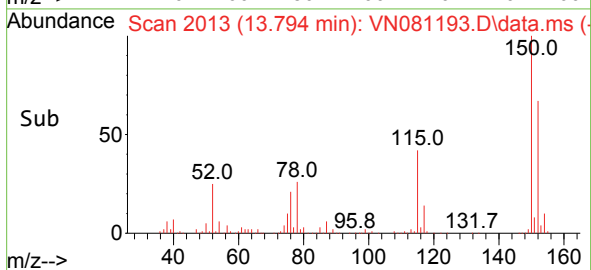
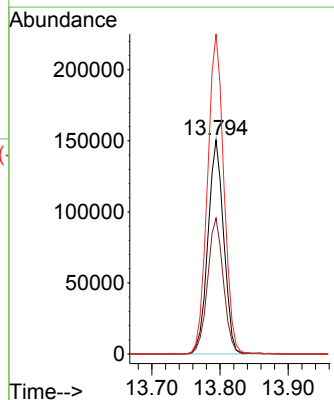
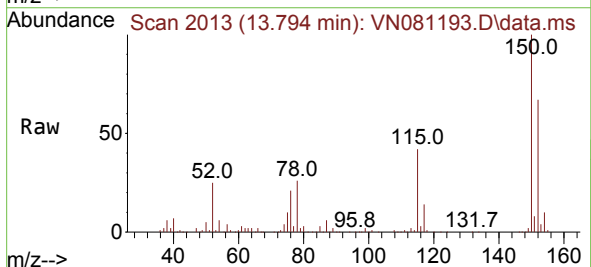
Instrument :  
 MSVOA\_N  
 ClientSampleId :  
 RW8-MW01D2-20240217

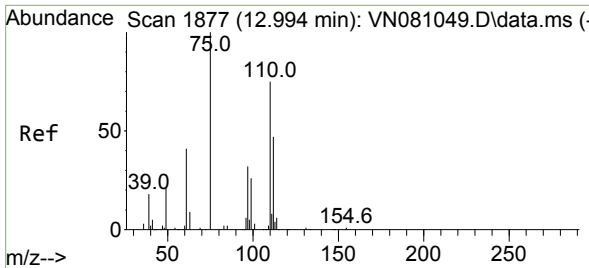
Tgt Ion:173 Resp: 1443  
 Ion Ratio Lower Upper  
 173 100  
 175 806.2 23.1 69.2#  
 254 0.0 0.0 0.0



#72  
 1,4-Dichlorobenzene-d4  
 Concen: 50.000 ug/l  
 RT: 13.794 min Scan# 2013  
 Delta R.T. -0.000 min  
 Lab File: VN081193.D  
 Acq: 26 Feb 2024 14:28

Tgt Ion:152 Resp: 242160  
 Ion Ratio Lower Upper  
 152 100  
 115 63.4 32.3 96.8  
 150 154.9 0.0 339.8

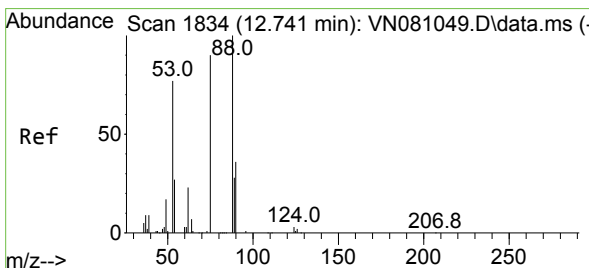
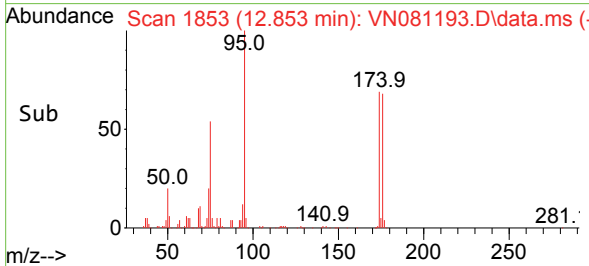
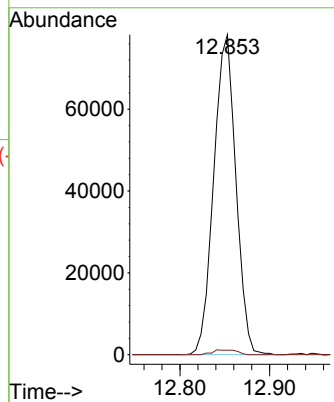
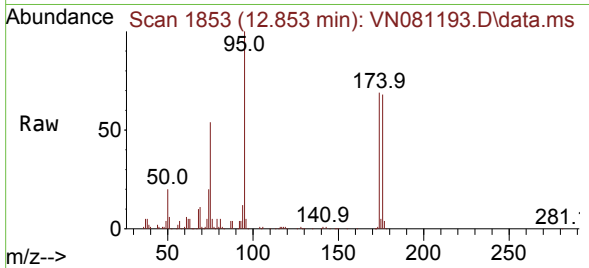




#76  
 1,2,3-Trichloropropane  
 Concen: 24.354 ug/l  
 RT: 12.853 min Scan# 1853  
 Delta R.T. -0.141 min  
 Lab File: VN081193.D  
 Acq: 26 Feb 2024 14:28

Instrument : MSVOA\_N  
 ClientSampleId : RW8-MW01D2-20240217

Tgt Ion: 75 Resp: 133995  
 Ion Ratio Lower Upper  
 75 100  
 77 1.7 91.0 272.8#



#81  
 trans-1,4-Dichloro-2-butene  
 Concen: 62.684 ug/l  
 RT: 12.853 min Scan# 1853  
 Delta R.T. 0.112 min  
 Lab File: VN081193.D  
 Acq: 26 Feb 2024 14:28

Tgt Ion: 75 Resp: 133995  
 Ion Ratio Lower Upper  
 75 100  
 53 0.0 71.4 107.2#  
 89 0.1 33.4 50.0#

