

Data Path : Z:\voasrv\HPCHEM1\MSVOA_N\Data\VN022624\
 Data File : VN081195.D
 Acq On : 26 Feb 2024 15:16
 Operator : JC\MD
 Sample : P1533-05
 Misc : 5.0mL/MSVOA_N/WATER
 ALS Vial : 14 Sample Multiplier: 1

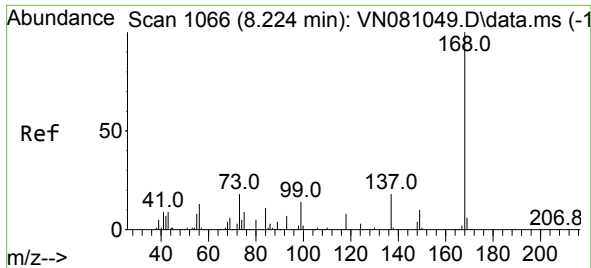
Instrument :
 MSVOA_N
 ClientSampleId :
 RW9-MW01S-20240217

Quant Time: Feb 27 00:07:59 2024
 Quant Method : Z:\voasrv\HPCHEM1\MSVOA_N\methods\82N021624W.M
 Quant Title : SW846 8260
 QLast Update : Fri Feb 16 23:45:20 2024
 Response via : Initial Calibration

Compound	R.T.	QIon	Response	Conc	Units	Dev(Min)

Internal Standards						
1) Pentafluorobenzene	8.224	168	366542	50.000	ug/l	0.00
34) 1,4-Difluorobenzene	9.106	114	665711	50.000	ug/l	0.00
63) Chlorobenzene-d5	11.871	117	585094	50.000	ug/l	0.00
72) 1,4-Dichlorobenzene-d4	13.794	152	228114	50.000	ug/l	0.00
System Monitoring Compounds						
33) 1,2-Dichloroethane-d4	8.577	65	240052	53.431	ug/l	0.00
Spiked Amount	50.000	Range 74 - 125	Recovery	=	106.860%	
35) Dibromofluoromethane	8.171	113	190702	50.659	ug/l	0.00
Spiked Amount	50.000	Range 75 - 124	Recovery	=	101.320%	
50) Toluene-d8	10.571	98	737916	55.191	ug/l	0.00
Spiked Amount	50.000	Range 86 - 113	Recovery	=	110.380%	
62) 4-Bromofluorobenzene	12.853	95	239202	47.613	ug/l	0.00
Spiked Amount	50.000	Range 83 - 123	Recovery	=	95.220%	
Target Compounds						
						Qvalue
3) Chloromethane	2.359	50	1158	Below Cal	#	43
6) Chloroethane	3.106	64	92	Below Cal	#	53
13) Acrolein	4.189	56	514	1.161	ug/l #	83
16) Acetone	4.442	43	3378	1.911	ug/l	91
20) Methylene Chloride	5.271	84	928	Below Cal	#	67
29) Tetrahydrofuran	7.841	42	19955	10.467	ug/l	88
31) Cyclohexane	8.218	56	9080	1.170	ug/l #	22
36) 1,1-Dichloropropene	8.230	75	32982	5.114	ug/l #	51
38) Carbon Tetrachloride	8.230	117	42692	6.543	ug/l #	18
41) Methacrylonitrile	7.847	41	11889	3.589	ug/l #	52
43) Isopropyl Acetate	8.671	43	3835	0.377	ug/l #	57
49) 1,4-Dioxane	9.694	88	243	Below Cal	#	58
51) 4-Methyl-2-Pentanone	10.571	43	3560	0.608	ug/l #	1
52) Toluene	10.635	92	21230	1.796	ug/l	98
76) 1,2,3-Trichloropropane	12.853	75	130200	25.121	ug/l #	1
81) trans-1,4-Dichloro-2-b...	12.853	75	130200	64.660	ug/l #	14

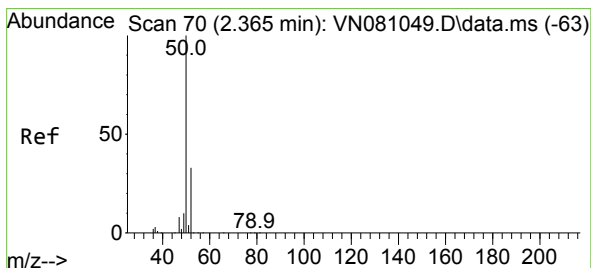
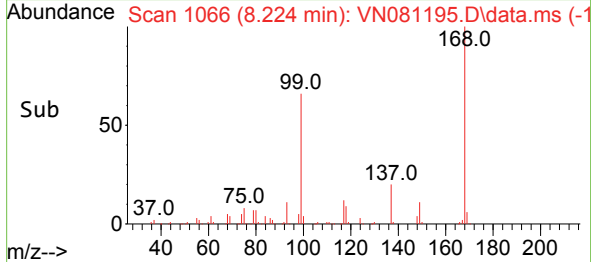
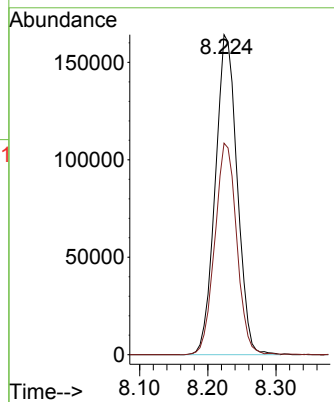
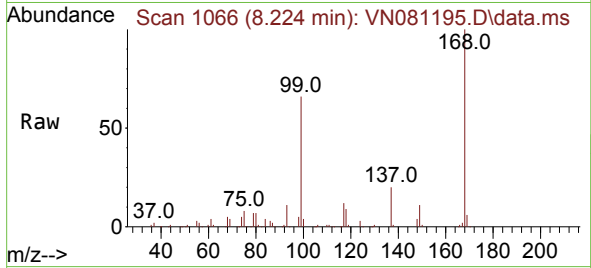
(#) = qualifier out of range (m) = manual integration (+) = signals summed



#1
 Pentafluorobenzene
 Concen: 50.000 ug/l
 RT: 8.224 min Scan# 10
 Delta R.T. -0.000 min
 Lab File: VN081195.D
 Acq: 26 Feb 2024 15:16

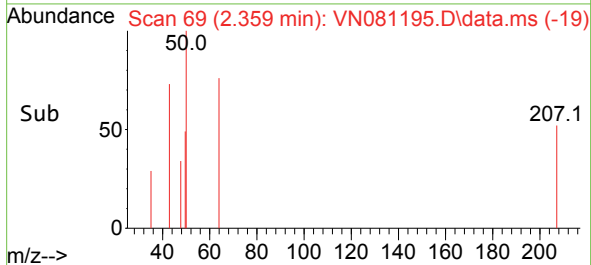
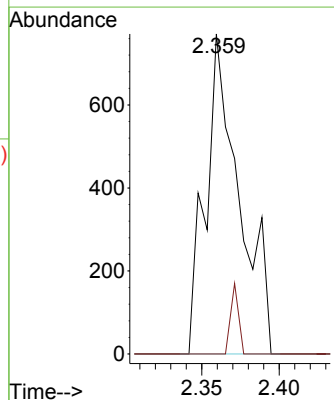
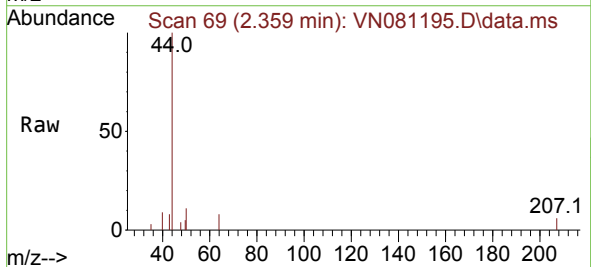
Instrument : MSVOA_N
 ClientSampleId : RW9-MW01S-20240217

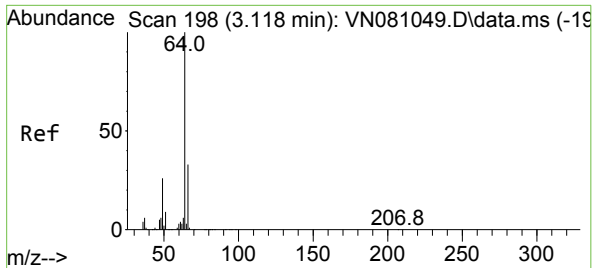
Tgt Ion:168 Resp: 366542
 Ion Ratio Lower Upper
 168 100
 99 66.1 59.9 89.9



#3
 Chloromethane
 Concen: Below Cal
 RT: 2.359 min Scan# 69
 Delta R.T. -0.006 min
 Lab File: VN081195.D
 Acq: 26 Feb 2024 15:16

Tgt Ion: 50 Resp: 1158
 Ion Ratio Lower Upper
 50 100
 52 0.0 25.0 37.4#

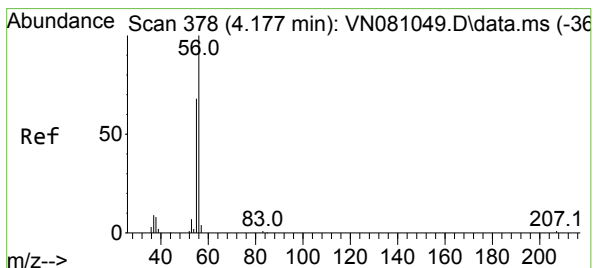
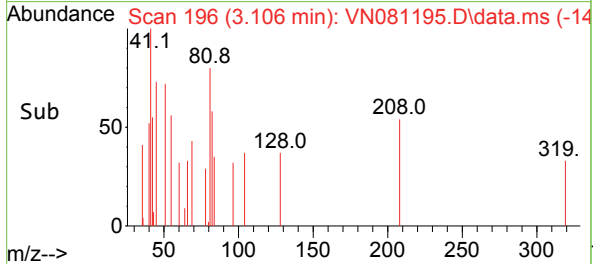
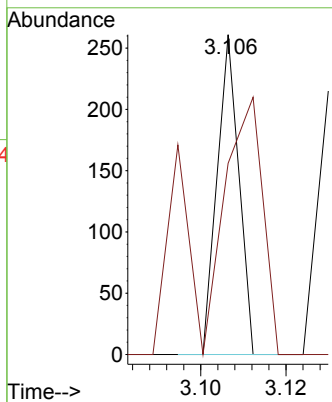
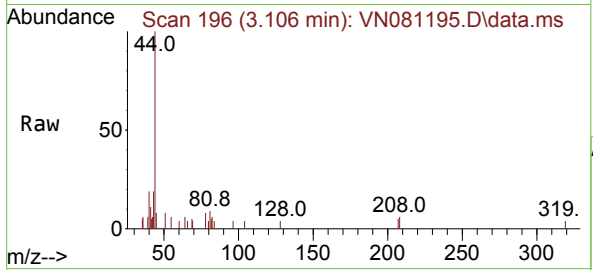




#6
 Chloroethane
 Concen: Below Cal
 RT: 3.106 min Scan# 11
 Delta R.T. -0.012 min
 Lab File: VN081195.D
 Acq: 26 Feb 2024 15:16

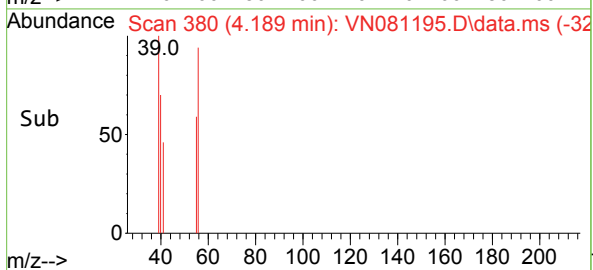
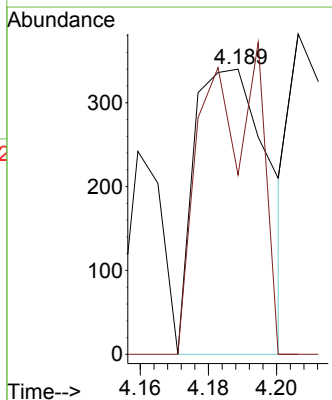
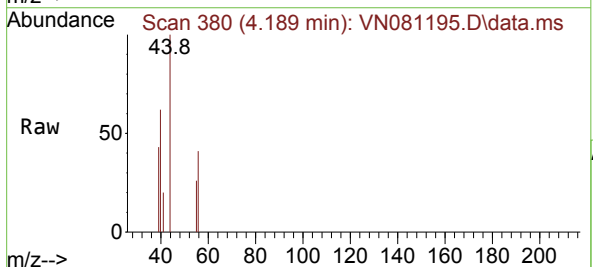
Instrument : MSVOA_N
 ClientSampleId : RW9-MW01S-20240217

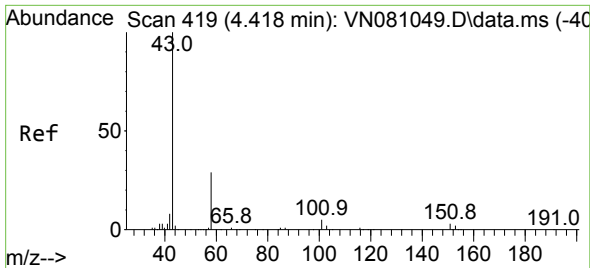
Tgt Ion: 64 Resp: 92
 Ion Ratio Lower Upper
 64 100
 66 59.8 26.4 39.6#



#13
 Acrolein
 Concen: 1.161 ug/l
 RT: 4.189 min Scan# 380
 Delta R.T. 0.012 min
 Lab File: VN081195.D
 Acq: 26 Feb 2024 15:16

Tgt Ion: 56 Resp: 514
 Ion Ratio Lower Upper
 56 100
 55 83.1 55.3 82.9#

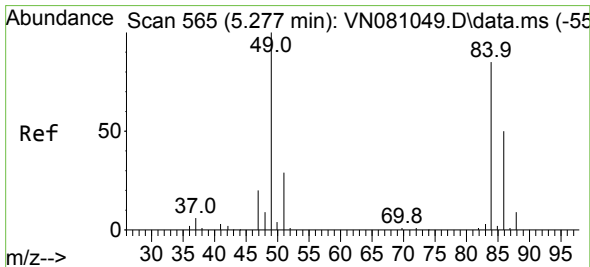
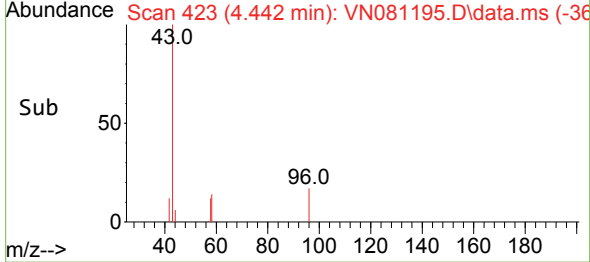
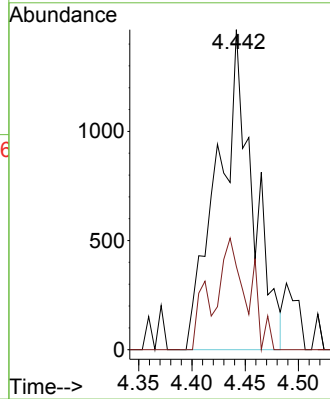
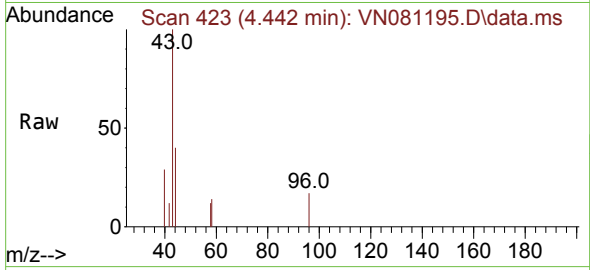




#16
 Acetone
 Concen: 1.911 ug/l
 RT: 4.442 min Scan# 41
 Delta R.T. 0.023 min
 Lab File: VN081195.D
 Acq: 26 Feb 2024 15:16

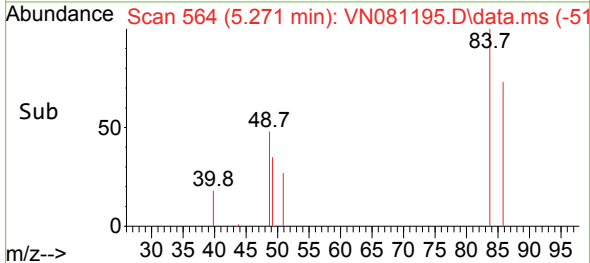
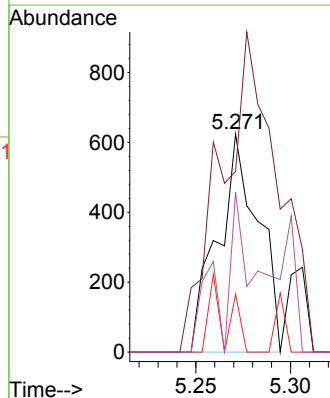
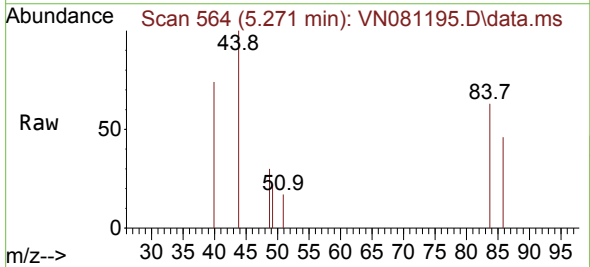
Instrument :
 MSVOA_N
 ClientSampleId :
 RW9-MW01S-20240217

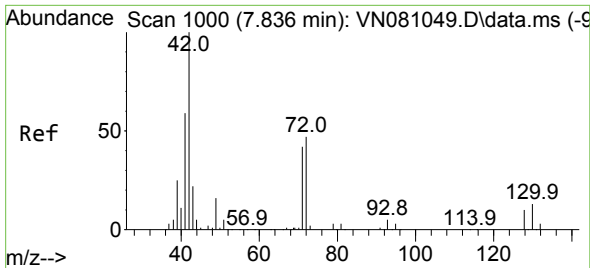
Tgt Ion: 43 Resp: 3378
 Ion Ratio Lower Upper
 43 100
 58 26.0 24.8 37.2



#20
 Methylene Chloride
 Concen: Below Cal
 RT: 5.271 min Scan# 564
 Delta R.T. -0.006 min
 Lab File: VN081195.D
 Acq: 26 Feb 2024 15:16

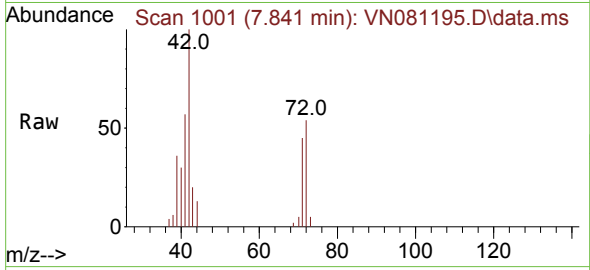
Tgt Ion: 84 Resp: 928
 Ion Ratio Lower Upper
 84 100
 49 82.9 108.1 162.1#
 51 26.6 32.9 49.3#
 86 73.4 48.6 73.0#





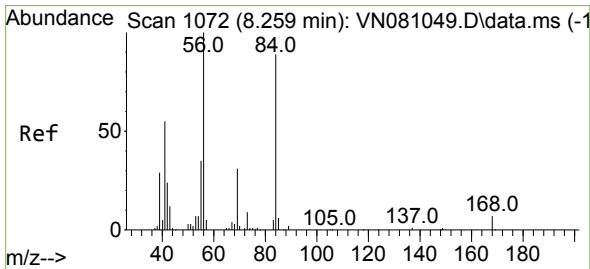
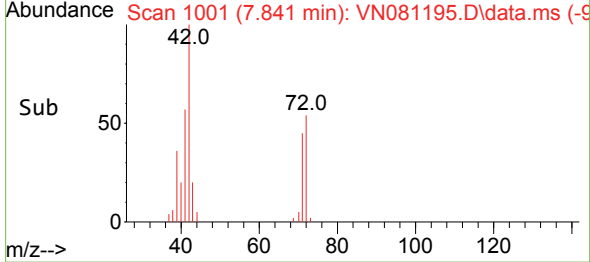
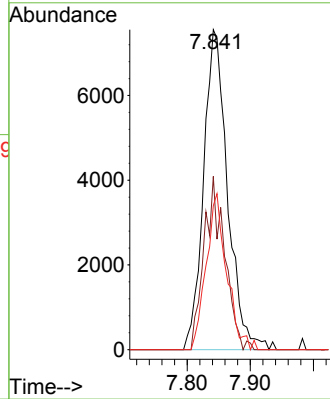
#29
 Tetrahydrofuran
 Concen: 10.467 ug/l
 RT: 7.841 min Scan# 1065
 Delta R.T. 0.006 min
 Lab File: VN081195.D
 Acq: 26 Feb 2024 15:16

Instrument : MSVOA_N
 ClientSampleId : RW9-MW01S-20240217



Tgt Ion: 42 Resp: 19955

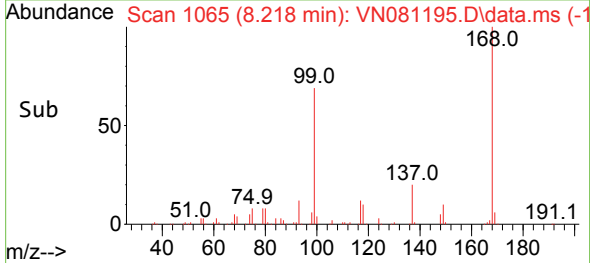
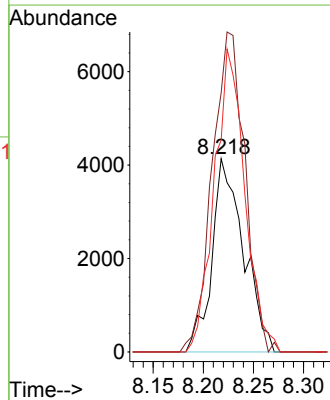
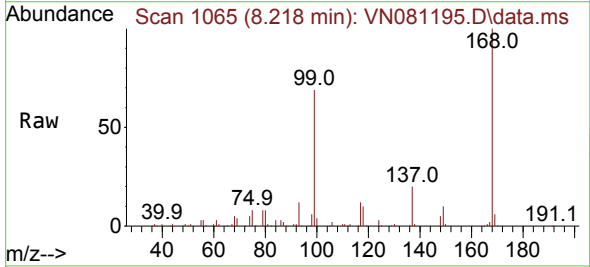
Ion	Ratio	Lower	Upper
42	100		
72	46.7	31.1	46.7
71	41.7	28.3	42.5

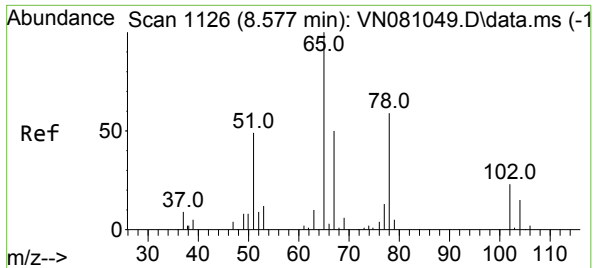


#31
 Cyclohexane
 Concen: 1.170 ug/l
 RT: 8.218 min Scan# 1065
 Delta R.T. -0.041 min
 Lab File: VN081195.D
 Acq: 26 Feb 2024 15:16

Tgt Ion: 56 Resp: 9080

Ion	Ratio	Lower	Upper
56	100		
69	123.8	20.1	30.1#
84	101.3	56.9	85.3#

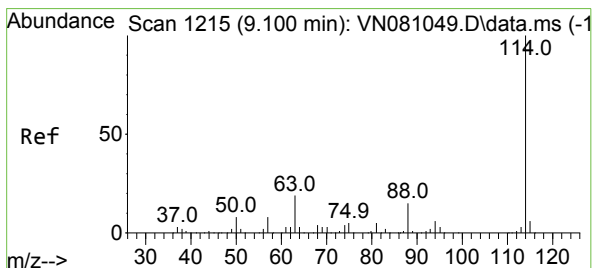
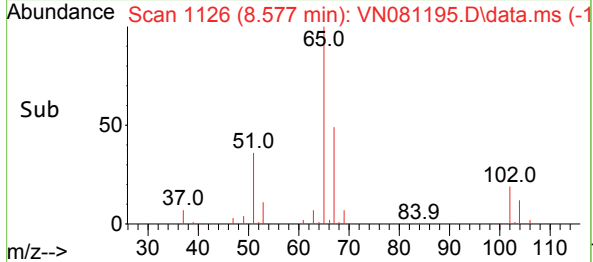
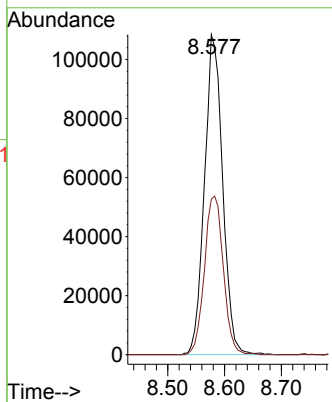
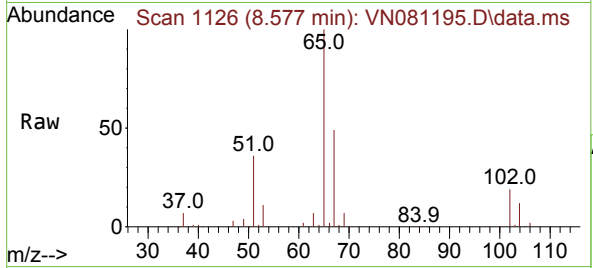




#33
 1,2-Dichloroethane-d4
 Concen: 53.431 ug/l
 RT: 8.577 min Scan# 1126
 Delta R.T. -0.000 min
 Lab File: VN081195.D
 Acq: 26 Feb 2024 15:16

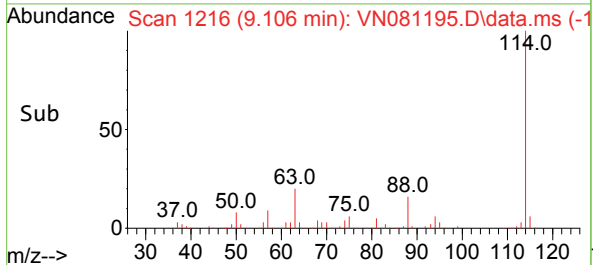
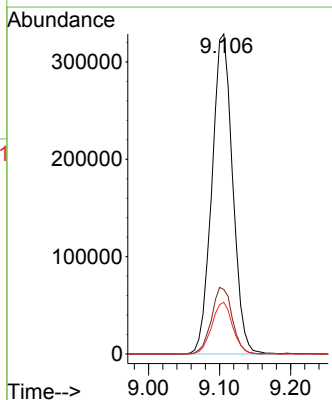
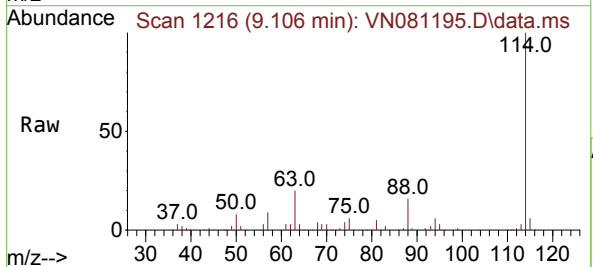
Instrument : MSVOA_N
 ClientSampleId : RW9-MW01S-20240217

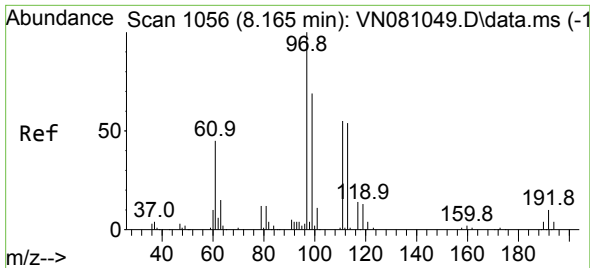
Tgt Ion: 65 Resp: 240052
 Ion Ratio Lower Upper
 65 100
 67 51.6 0.0 102.4



#34
 1,4-Difluorobenzene
 Concen: 50.000 ug/l
 RT: 9.106 min Scan# 1216
 Delta R.T. 0.006 min
 Lab File: VN081195.D
 Acq: 26 Feb 2024 15:16

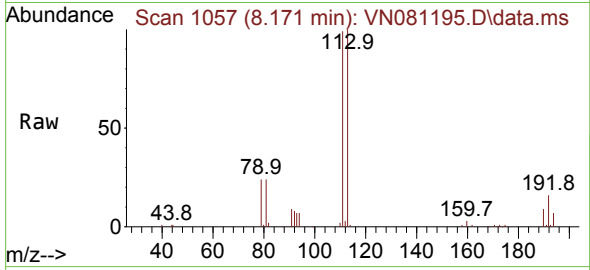
Tgt Ion: 114 Resp: 665711
 Ion Ratio Lower Upper
 114 100
 63 20.2 0.0 48.0
 88 16.2 0.0 34.8





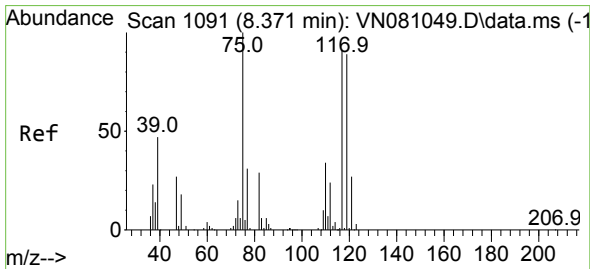
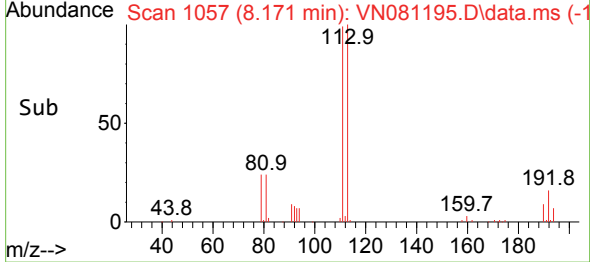
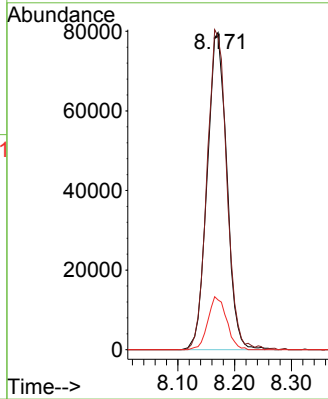
#35
 Dibromofluoromethane
 Concen: 50.659 ug/l
 RT: 8.171 min Scan# 1067
 Delta R.T. 0.006 min
 Lab File: VN081195.D
 Acq: 26 Feb 2024 15:16

Instrument : MSVOA_N
 ClientSampleId : RW9-MW01S-20240217



Tgt Ion:113 Resp: 190702

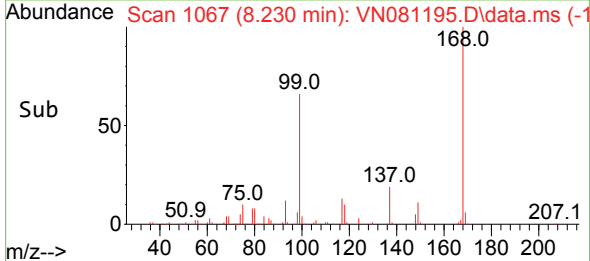
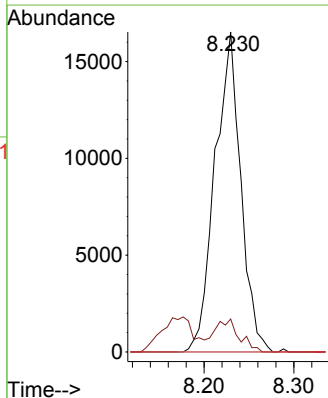
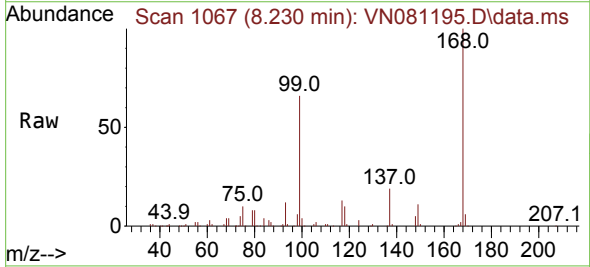
Ion	Ratio	Lower	Upper
113	100		
111	101.8	82.2	123.4
192	15.9	12.5	18.7

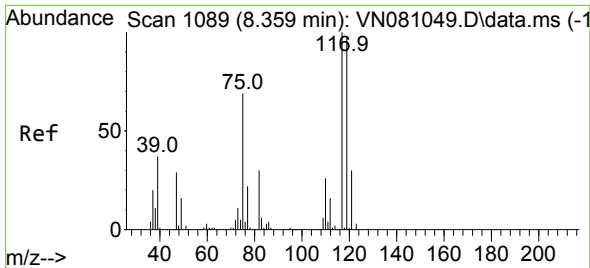


#36
 1,1-Dichloropropene
 Concen: 5.114 ug/l
 RT: 8.230 min Scan# 1067
 Delta R.T. -0.141 min
 Lab File: VN081195.D
 Acq: 26 Feb 2024 15:16

Tgt Ion: 75 Resp: 32982

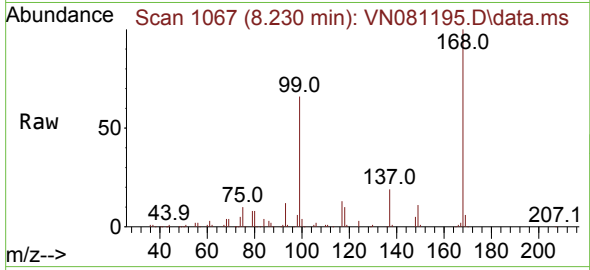
Ion	Ratio	Lower	Upper
75	100		
110	9.8	16.0	48.0#
77	0.0	25.8	38.6#



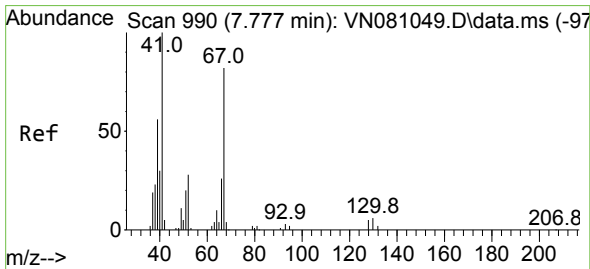
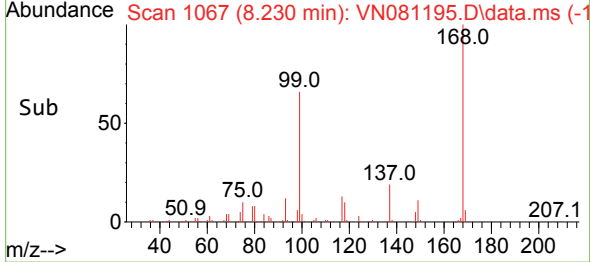
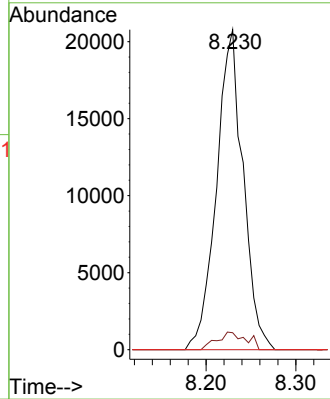


#38
 Carbon Tetrachloride
 Concen: 6.543 ug/l
 RT: 8.230 min Scan# 1000
 Delta R.T. -0.129 min
 Lab File: VN081195.D
 Acq: 26 Feb 2024 15:16

Instrument : MSVOA_N
 ClientSampleId : RW9-MW01S-20240217

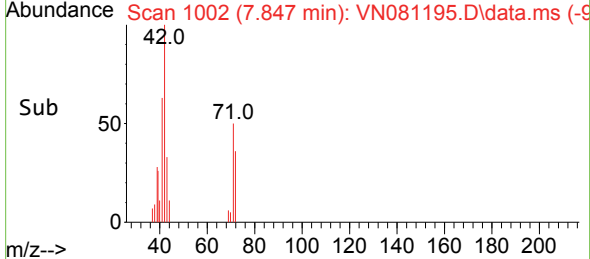
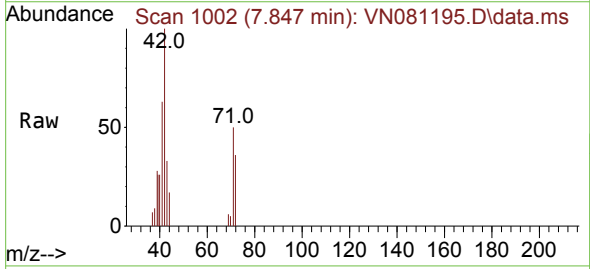
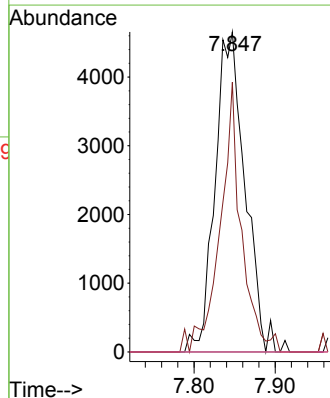


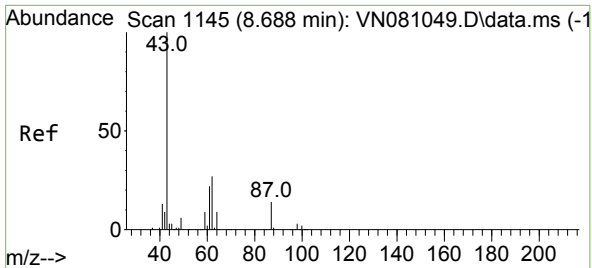
Tgt Ion:117 Resp: 42692
 Ion Ratio Lower Upper
 117 100
 119 5.3 73.4 110.2#
 121 0.0 24.4 36.6#



#41
 Methacrylonitrile
 Concen: 3.589 ug/l
 RT: 7.847 min Scan# 1002
 Delta R.T. 0.071 min
 Lab File: VN081195.D
 Acq: 26 Feb 2024 15:16

Tgt Ion: 41 Resp: 11889
 Ion Ratio Lower Upper
 41 100
 39 60.4 48.4 72.6
 67 0.0 56.8 85.2#
 52 0.0 25.0 37.4#

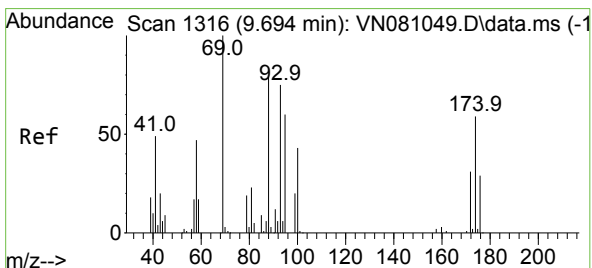
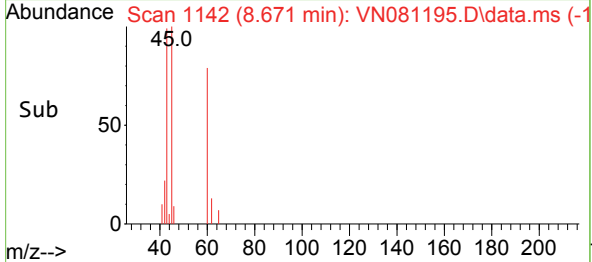
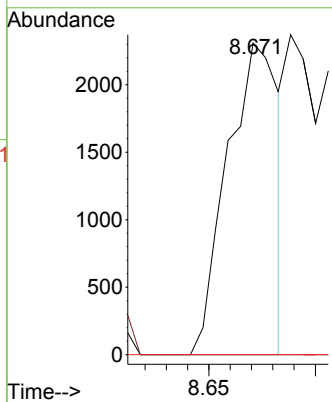
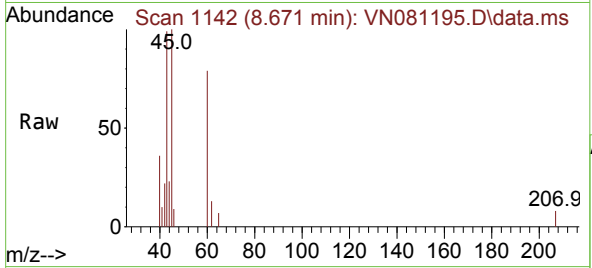




#43
 Isopropyl Acetate
 Concen: 0.377 ug/l
 RT: 8.671 min Scan# 1142
 Delta R.T. -0.018 min
 Lab File: VN081195.D
 Acq: 26 Feb 2024 15:16

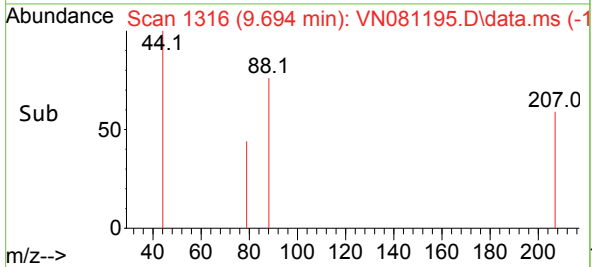
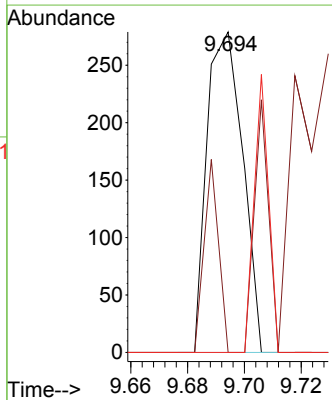
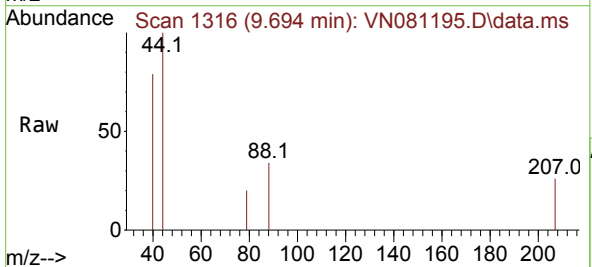
Instrument : MSVOA_N
 ClientSampleId : RW9-MW01S-20240217

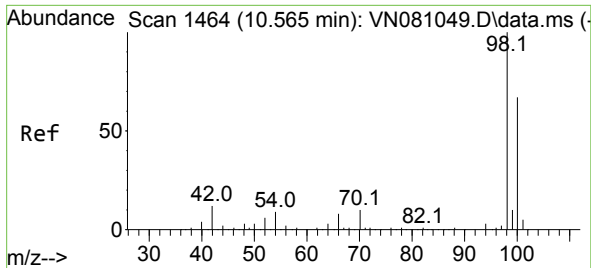
Tgt Ion	Resp	Lower	Upper
43	3835		
61	0.0	19.9	29.9#
87	0.0	9.0	13.6#



#49
 1,4-Dioxane
 Concen: Below Cal
 RT: 9.694 min Scan# 1316
 Delta R.T. 0.000 min
 Lab File: VN081195.D
 Acq: 26 Feb 2024 15:16

Tgt Ion	Resp	Lower	Upper
88	243		
43	24.3	30.1	45.1#
58	35.0	63.9	95.9#

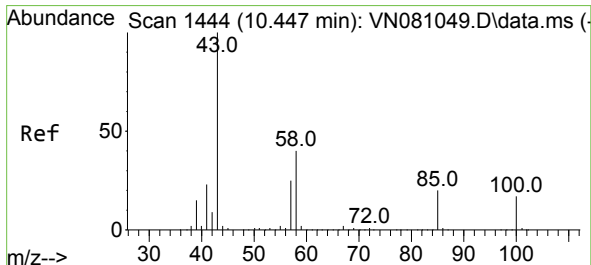
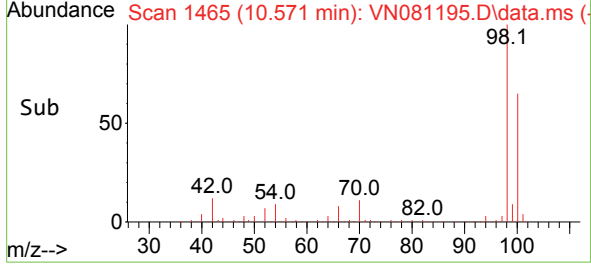
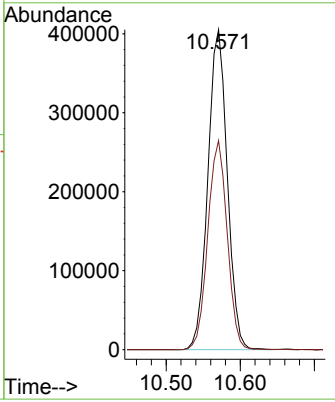
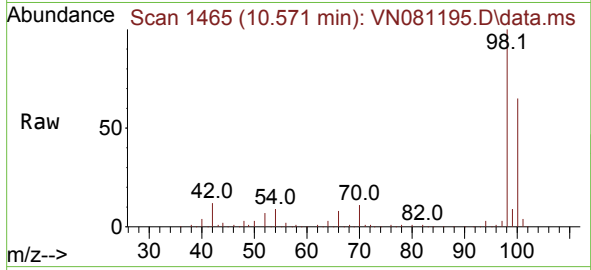




#50
 Toluene-d8
 Concen: 55.191 ug/l
 RT: 10.571 min Scan# 1465
 Delta R.T. 0.006 min
 Lab File: VN081195.D
 Acq: 26 Feb 2024 15:16

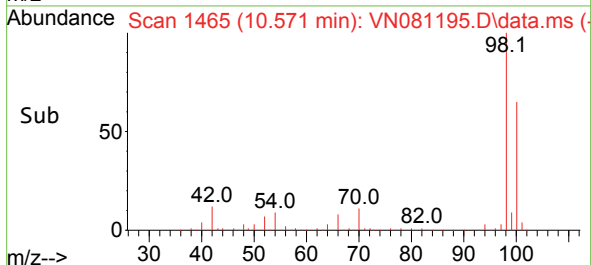
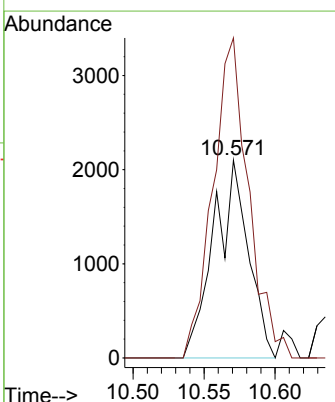
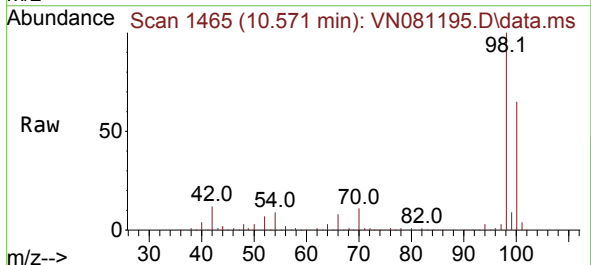
Instrument : MSVOA_N
 ClientSampleId : RW9-MW01S-20240217

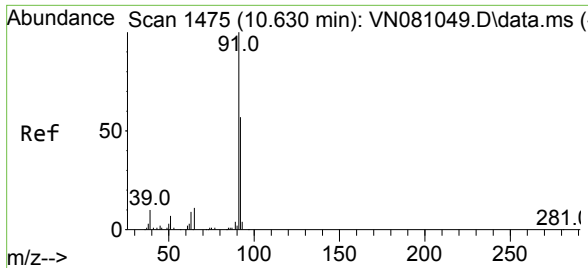
Tgt Ion: 98 Resp: 737916
 Ion Ratio Lower Upper
 98 100
 100 65.2 51.4 77.0



#51
 4-Methyl-2-Pentanone
 Concen: 0.608 ug/l
 RT: 10.571 min Scan# 1465
 Delta R.T. 0.123 min
 Lab File: VN081195.D
 Acq: 26 Feb 2024 15:16

Tgt Ion: 43 Resp: 3560
 Ion Ratio Lower Upper
 43 100
 58 166.9 29.4 44.0#

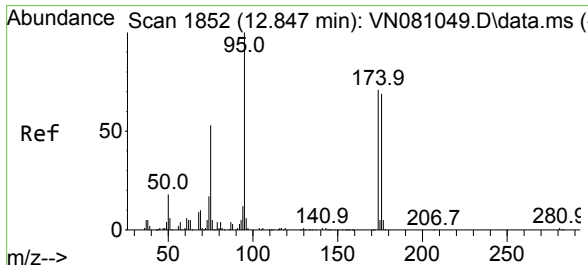
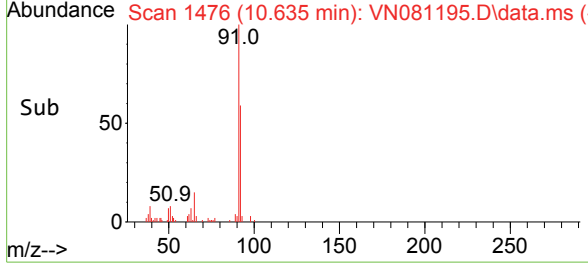
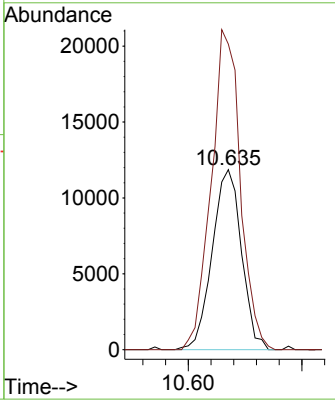
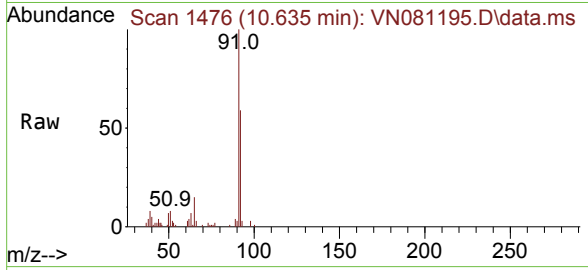




#52
 Toluene
 Concen: 1.796 ug/l
 RT: 10.635 min Scan# 1476
 Delta R.T. 0.006 min
 Lab File: VN081195.D
 Acq: 26 Feb 2024 15:16

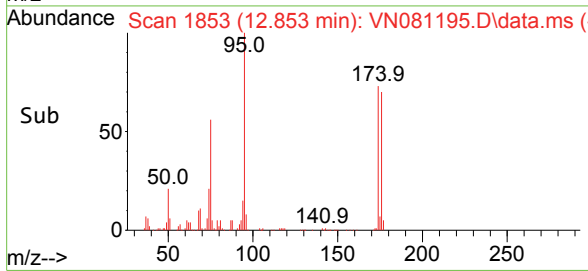
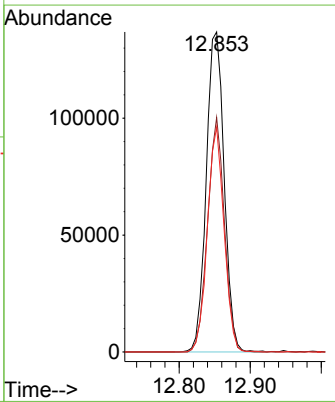
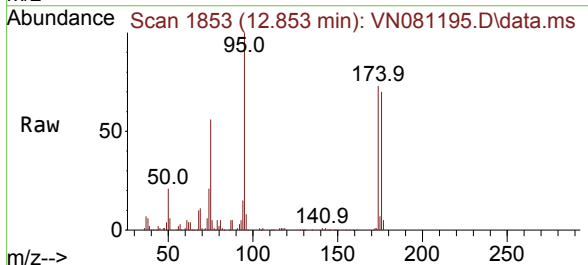
Instrument : MSVOA_N
 ClientSampleId : RW9-MW01S-20240217

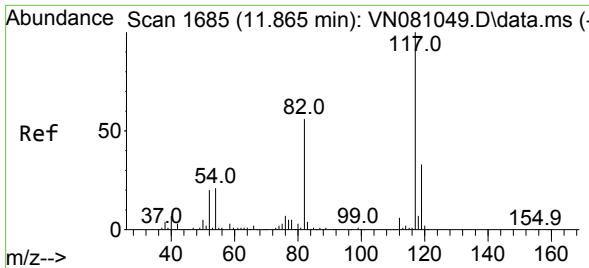
Tgt Ion: 92 Resp: 21230
 Ion Ratio Lower Upper
 92 100
 91 176.9 139.4 209.0



#62
 4-Bromofluorobenzene
 Concen: 47.613 ug/l
 RT: 12.853 min Scan# 1853
 Delta R.T. 0.006 min
 Lab File: VN081195.D
 Acq: 26 Feb 2024 15:16

Tgt Ion: 95 Resp: 239202
 Ion Ratio Lower Upper
 95 100
 174 68.9 0.0 120.4
 176 65.6 0.0 121.0

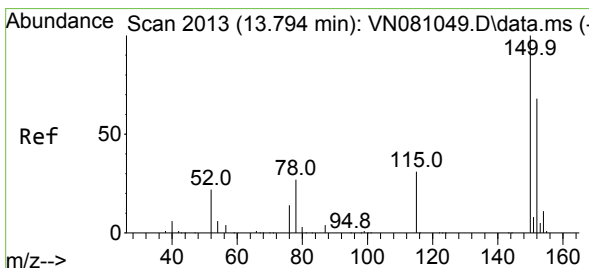
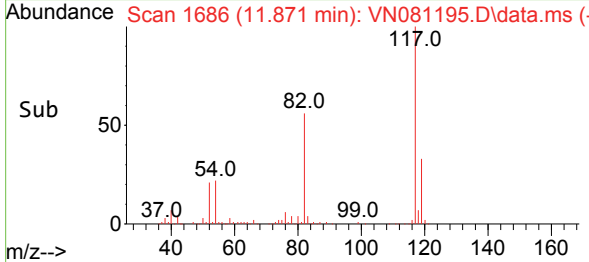
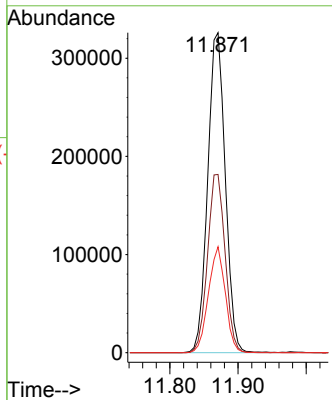
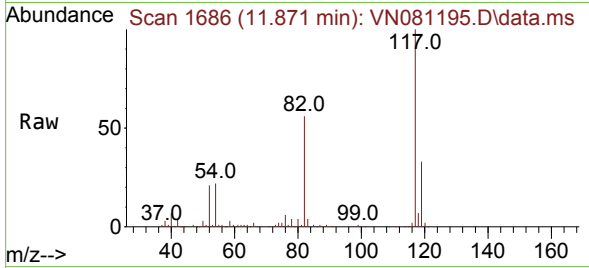




#63
 Chlorobenzene-d5
 Concen: 50.000 ug/l
 RT: 11.871 min Scan# 11
 Delta R.T. 0.006 min
 Lab File: VN081195.D
 Acq: 26 Feb 2024 15:16

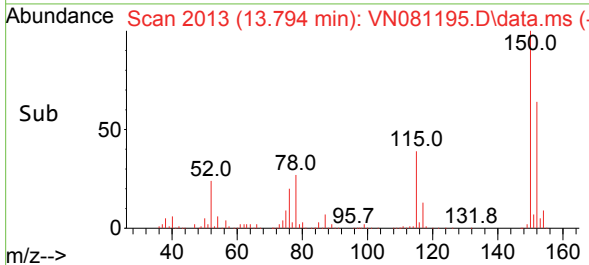
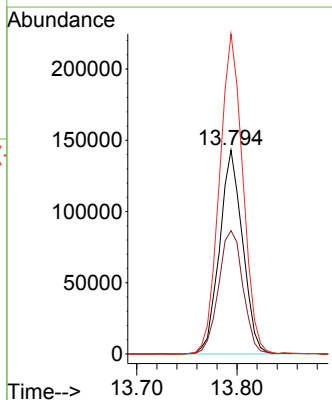
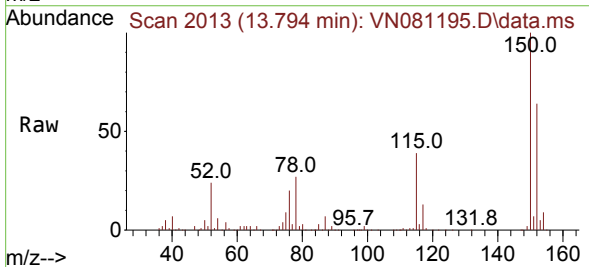
Instrument : MSVOA_N
 ClientSampleId : RW9-MW01S-20240217

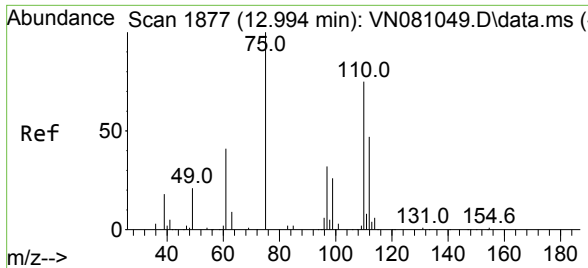
Tgt Ion	Resp	Lower	Upper
117	585094		
117	100		
82	55.7	52.7	79.1
119	33.1	25.3	37.9



#72
 1,4-Dichlorobenzene-d4
 Concen: 50.000 ug/l
 RT: 13.794 min Scan# 2013
 Delta R.T. -0.000 min
 Lab File: VN081195.D
 Acq: 26 Feb 2024 15:16

Tgt Ion	Resp	Lower	Upper
152	228114		
152	100		
115	64.6	32.3	96.8
150	160.0	0.0	339.8

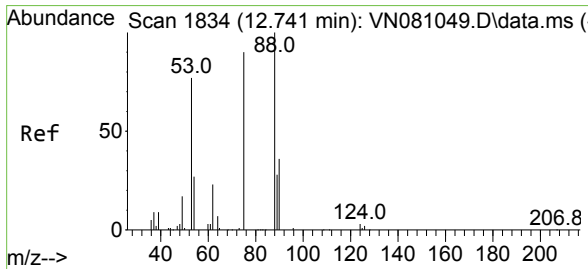
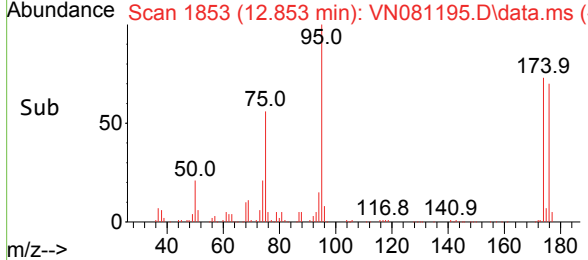
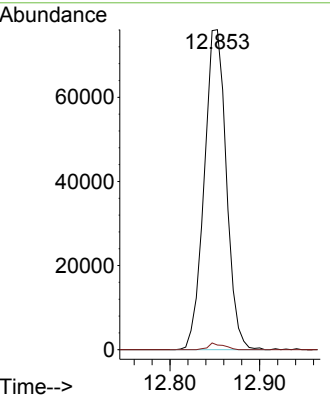
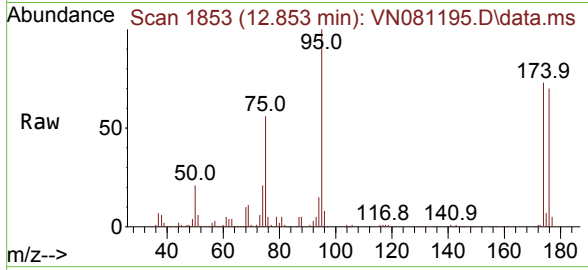




#76
 1,2,3-Trichloropropane
 Concen: 25.121 ug/l
 RT: 12.853 min Scan# 1853
 Delta R.T. -0.141 min
 Lab File: VN081195.D
 Acq: 26 Feb 2024 15:16

Instrument : MSVOA_N
 ClientSampleId : RW9-MW01S-20240217

Tgt Ion: 75 Resp: 130200
 Ion Ratio Lower Upper
 75 100
 77 1.4 91.0 272.8#



#81
 trans-1,4-Dichloro-2-butene
 Concen: 64.660 ug/l
 RT: 12.853 min Scan# 1853
 Delta R.T. 0.112 min
 Lab File: VN081195.D
 Acq: 26 Feb 2024 15:16

Tgt Ion: 75 Resp: 130200
 Ion Ratio Lower Upper
 75 100
 53 0.1 71.4 107.2#
 89 0.0 33.4 50.0#

