

Data Path : Z:\voasrv\HPCHEM1\MSVOA\_N\Data\VN022724\  
 Data File : VN081213.D  
 Acq On : 27 Feb 2024 12:46  
 Operator : JC\MD  
 Sample : PB159267TB  
 Misc : 5.0mL/MSVOA\_N/WATER  
 ALS Vial : 7 Sample Multiplier: 1

Instrument :  
 MSVOA\_N  
 ClientSampleId :  
 PB159267TB

Quant Time: Feb 28 04:15:46 2024  
 Quant Method : Z:\voasrv\HPCHEM1\MSVOA\_N\methods\82N021624W.M  
 Quant Title : SW846 8260  
 QLast Update : Fri Feb 16 23:45:20 2024  
 Response via : Initial Calibration

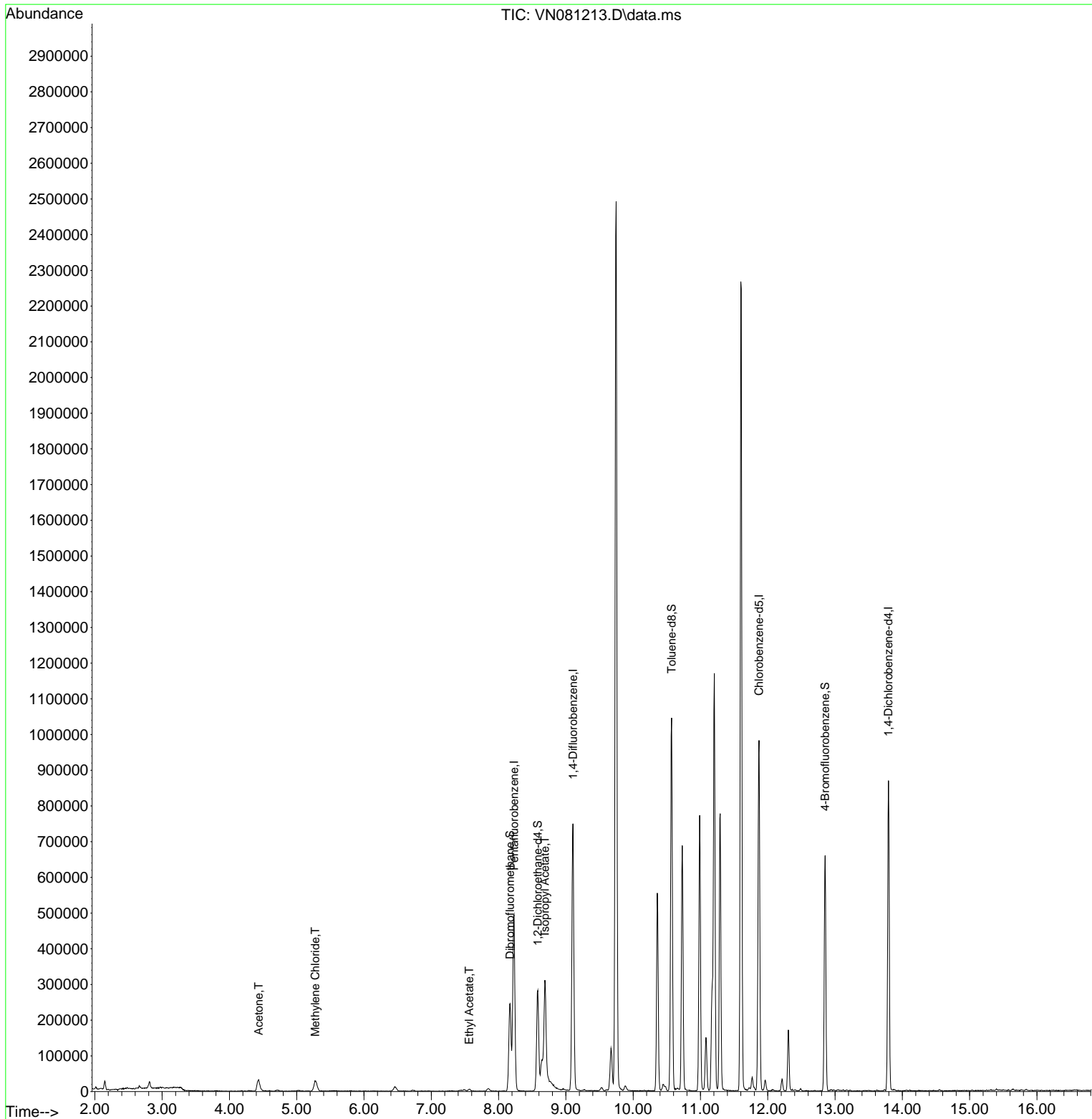
Compound	R.T.	QIon	Response	Conc	Units	Dev(Min)
-----						
Internal Standards						
1) Pentafluorobenzene	8.230	168	334856	50.000	ug/l	0.00
34) 1,4-Difluorobenzene	9.106	114	635651	50.000	ug/l	0.00
63) Chlorobenzene-d5	11.871	117	567585	50.000	ug/l	0.00
72) 1,4-Dichlorobenzene-d4	13.794	152	217182	50.000	ug/l	0.00
System Monitoring Compounds						
33) 1,2-Dichloroethane-d4	8.583	65	226218	55.116	ug/l	0.00
Spiked Amount	50.000	Range	74 - 125	Recovery	=	110.240%
35) Dibromofluoromethane	8.171	113	175911	48.940	ug/l	0.00
Spiked Amount	50.000	Range	75 - 124	Recovery	=	97.880%
50) Toluene-d8	10.571	98	703669	55.119	ug/l	0.00
Spiked Amount	50.000	Range	86 - 113	Recovery	=	110.240%
62) 4-Bromofluorobenzene	12.853	95	224750	46.852	ug/l	0.00
Spiked Amount	50.000	Range	83 - 123	Recovery	=	93.700%
Target Compounds						
						Qvalue
16) Acetone	4.436	43	62380	38.626	ug/l	97
20) Methylene Chloride	5.277	84	23546	4.795	ug/l	88
37) Ethyl Acetate	7.565	43	7982	1.436	ug/l #	92
43) Isopropyl Acetate	8.688	43	468547	48.205	ug/l #	80
-----						

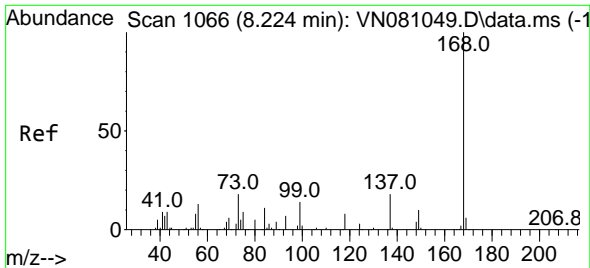
(#) = qualifier out of range (m) = manual integration (+) = signals summed

Data Path : Z:\voasrv\HPCHEM1\MSVOA\_N\Data\VN022724\  
 Data File : VN081213.D  
 Acq On : 27 Feb 2024 12:46  
 Operator : JC\MD  
 Sample : PB159267TB  
 Misc : 5.0mL/MSVOA\_N/WATER  
 ALS Vial : 7 Sample Multiplier: 1

Instrument :  
 MSVOA\_N  
 ClientSampleId :  
 PB159267TB

Quant Time: Feb 28 04:15:46 2024  
 Quant Method : Z:\voasrv\HPCHEM1\MSVOA\_N\methods\82N021624W.M  
 Quant Title : SW846 8260  
 QLast Update : Fri Feb 16 23:45:20 2024  
 Response via : Initial Calibration

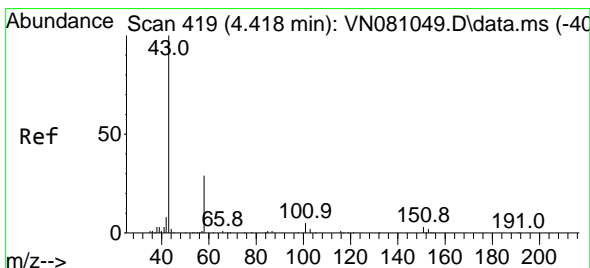
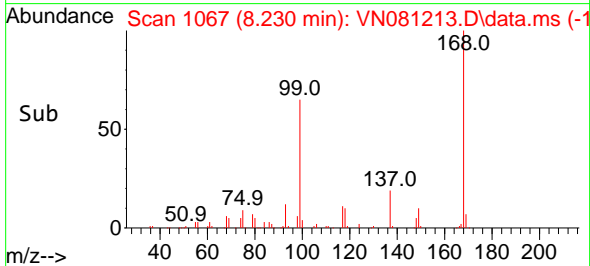
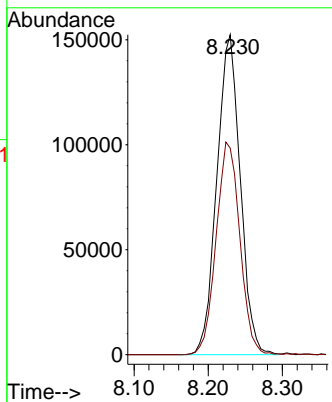
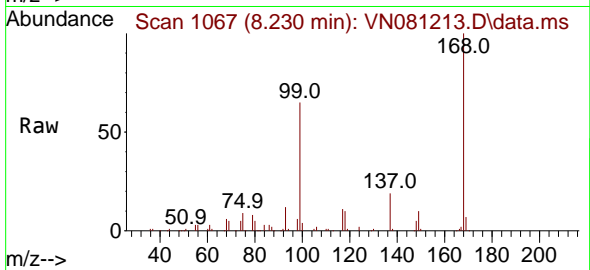




#1  
 Pentafluorobenzene  
 Concen: 50.000 ug/l  
 RT: 8.230 min Scan# 1067  
 Delta R.T. 0.006 min  
 Lab File: VN081213.D  
 Acq: 27 Feb 2024 12:46

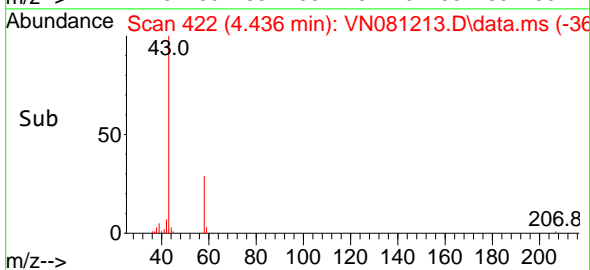
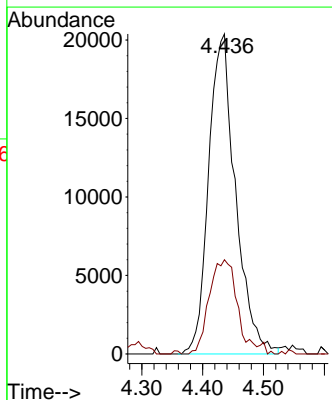
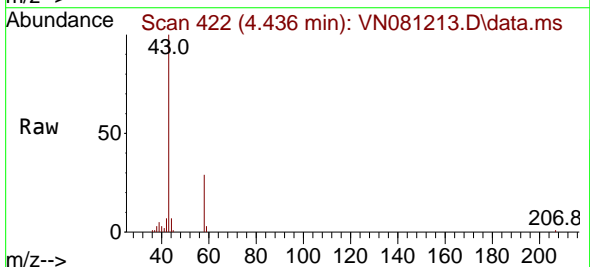
Instrument :  
 MSVOA\_N  
 ClientSampleId :  
 PB159267TB

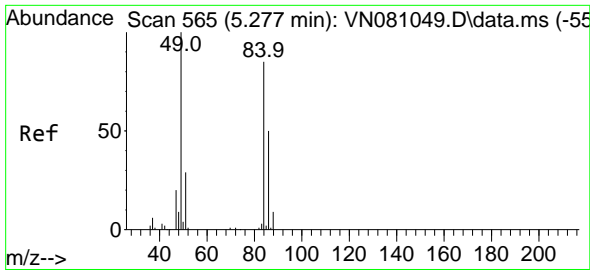
Tgt Ion:168 Resp: 334856  
 Ion Ratio Lower Upper  
 168 100  
 99 64.6 59.9 89.9



#16  
 Acetone  
 Concen: 38.626 ug/l  
 RT: 4.436 min Scan# 422  
 Delta R.T. 0.018 min  
 Lab File: VN081213.D  
 Acq: 27 Feb 2024 12:46

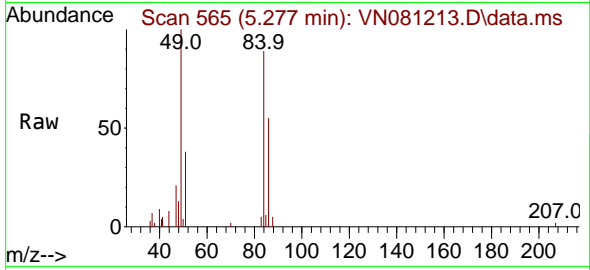
Tgt Ion: 43 Resp: 62380  
 Ion Ratio Lower Upper  
 43 100  
 58 29.4 24.8 37.2





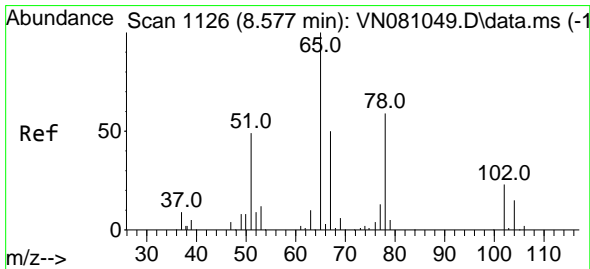
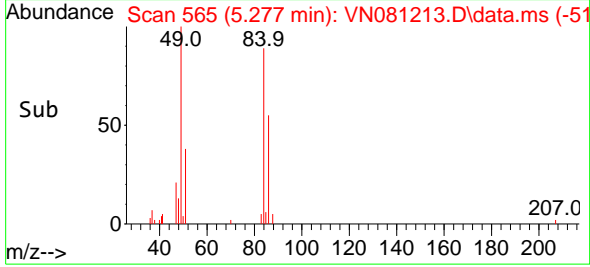
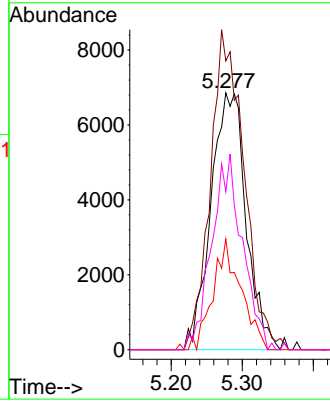
#20  
 Methylene Chloride  
 Concen: 4.795 ug/l  
 RT: 5.277 min Scan# 50  
 Delta R.T. -0.000 min  
 Lab File: VN081213.D  
 Acq: 27 Feb 2024 12:46

Instrument : MSVOA\_N  
 ClientSampleId : PB159267TB



Tgt Ion: 84 Resp: 23546

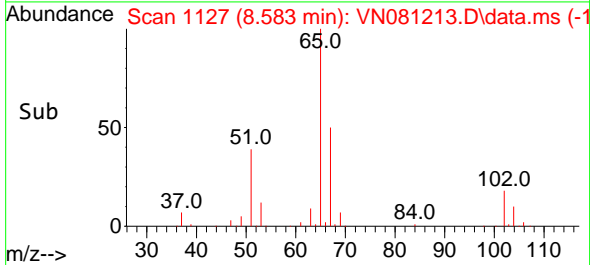
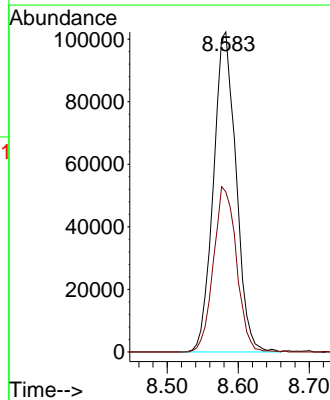
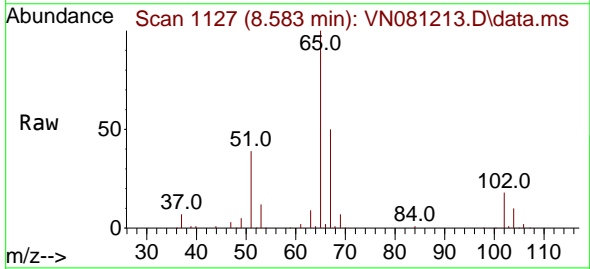
Ion	Ratio	Lower	Upper
84	100		
49	112.5	108.1	162.1
51	43.2	32.9	49.3
86	61.5	48.6	73.0

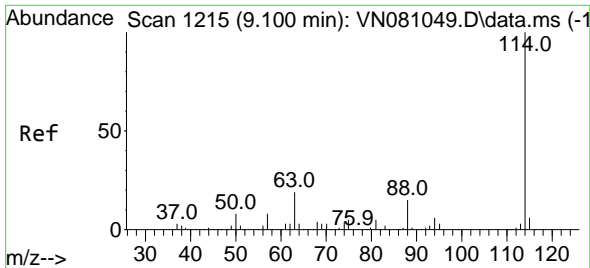


#33  
 1,2-Dichloroethane-d4  
 Concen: 55.116 ug/l  
 RT: 8.583 min Scan# 1127  
 Delta R.T. 0.006 min  
 Lab File: VN081213.D  
 Acq: 27 Feb 2024 12:46

Tgt Ion: 65 Resp: 226218

Ion	Ratio	Lower	Upper
65	100		
67	52.6	0.0	102.4



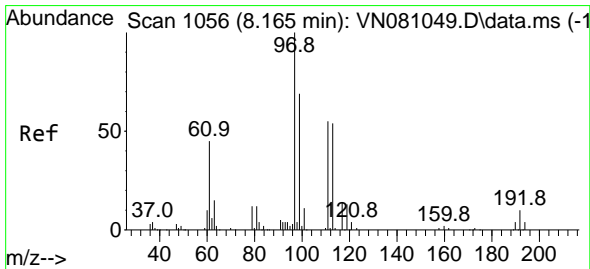
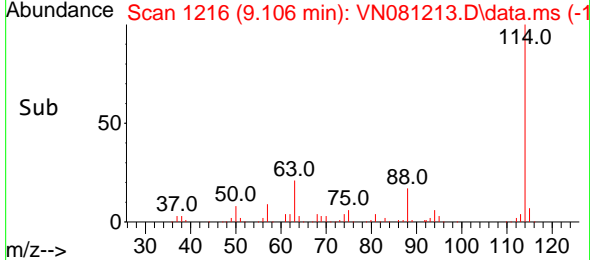
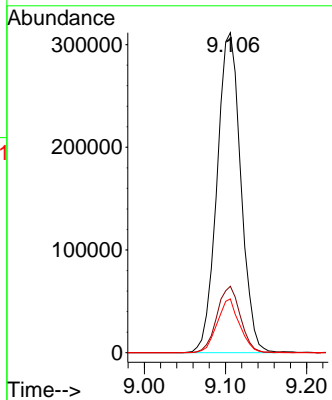
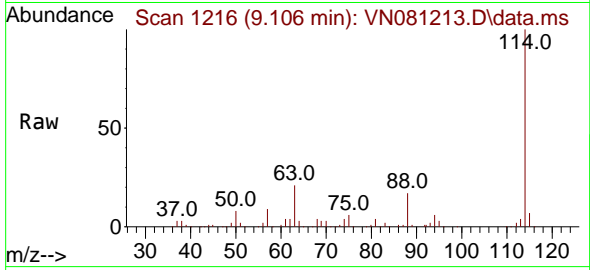


#34  
 1,4-Difluorobenzene  
 Concen: 50.000 ug/l  
 RT: 9.106 min Scan# 11  
 Delta R.T. 0.006 min  
 Lab File: VN081213.D  
 Acq: 27 Feb 2024 12:46

Instrument : MSVOA\_N  
 ClientSampleId : PB159267TB

Tgt Ion:114 Resp: 635651

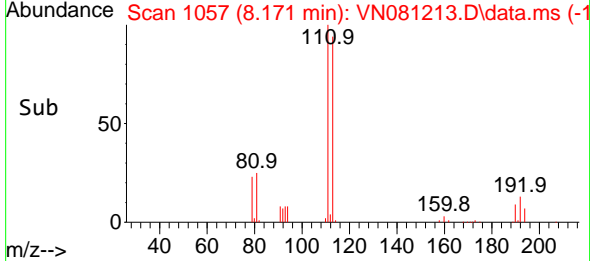
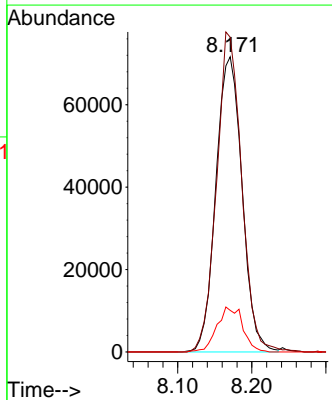
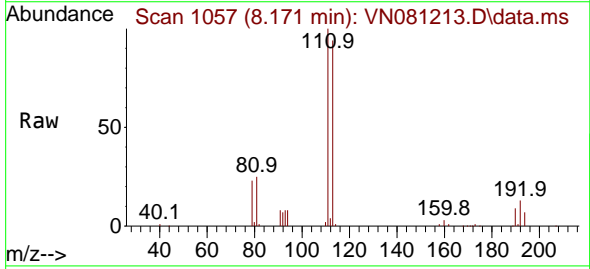
Ion	Ratio	Lower	Upper
114	100		
63	20.8	0.0	48.0
88	16.8	0.0	34.8

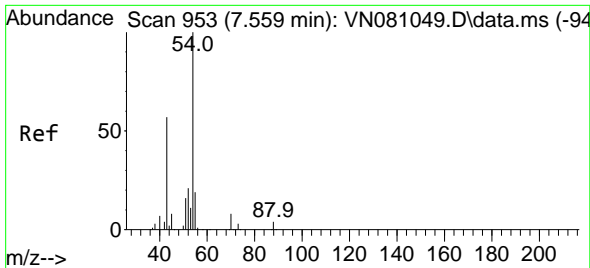


#35  
 Dibromofluoromethane  
 Concen: 48.940 ug/l  
 RT: 8.171 min Scan# 1057  
 Delta R.T. 0.006 min  
 Lab File: VN081213.D  
 Acq: 27 Feb 2024 12:46

Tgt Ion:113 Resp: 175911

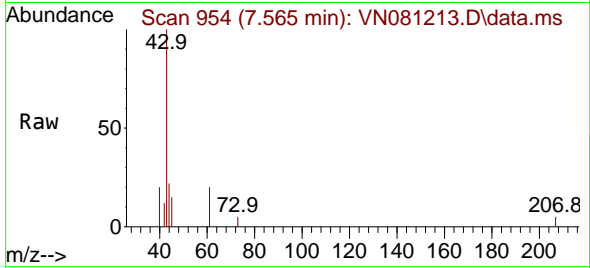
Ion	Ratio	Lower	Upper
113	100		
111	103.6	82.2	123.4
192	15.0	12.5	18.7





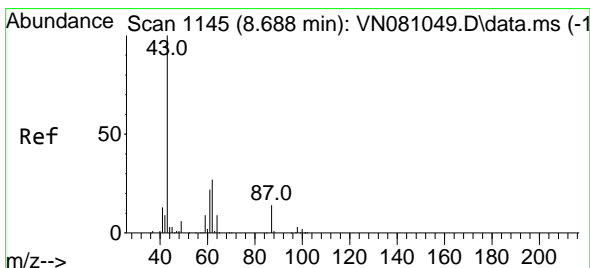
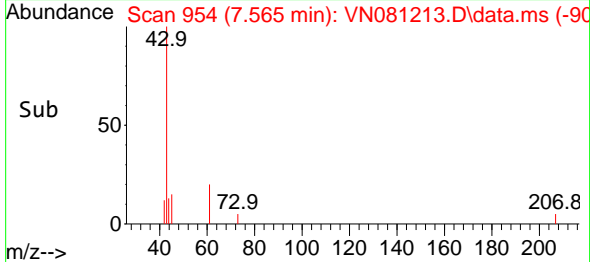
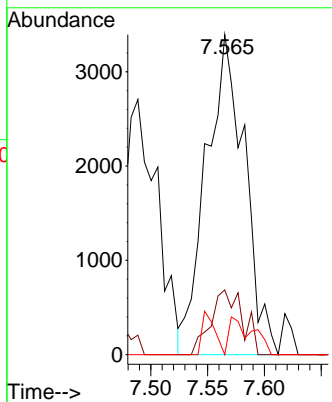
#37  
 Ethyl Acetate  
 Concen: 1.436 ug/l  
 RT: 7.565 min Scan# 91  
 Delta R.T. 0.006 min  
 Lab File: VN081213.D  
 Acq: 27 Feb 2024 12:46

Instrument :  
 MSVOA\_N  
 ClientSampleId :  
 PB159267TB



Tgt Ion: 43 Resp: 7982

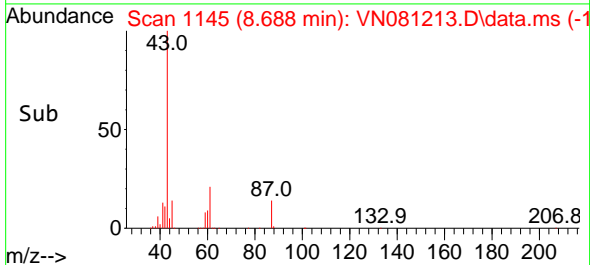
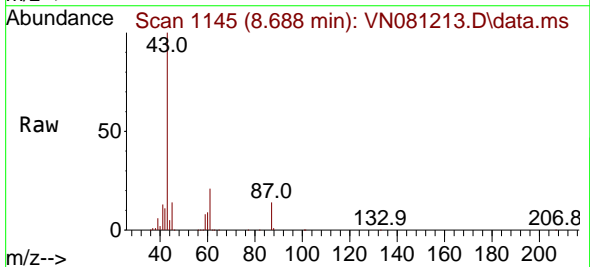
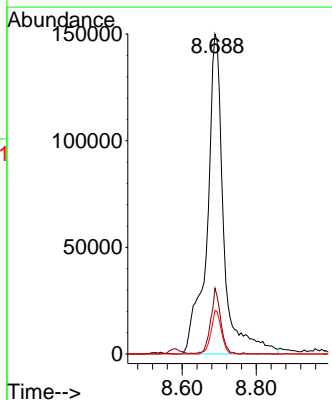
Ion	Ratio	Lower	Upper
43	100		
61	16.8	10.6	15.8#
70	7.1	8.0	12.0#

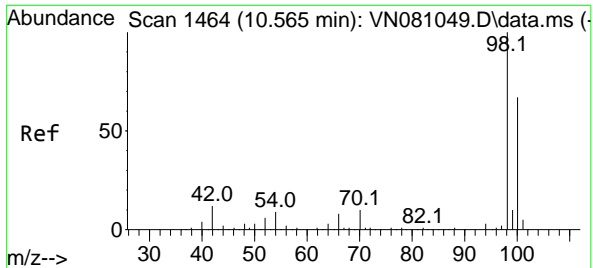


#43  
 Isopropyl Acetate  
 Concen: 48.205 ug/l  
 RT: 8.688 min Scan# 1145  
 Delta R.T. -0.000 min  
 Lab File: VN081213.D  
 Acq: 27 Feb 2024 12:46

Tgt Ion: 43 Resp: 468547

Ion	Ratio	Lower	Upper
43	100		
61	12.3	19.9	29.9#
87	8.4	9.0	13.6#

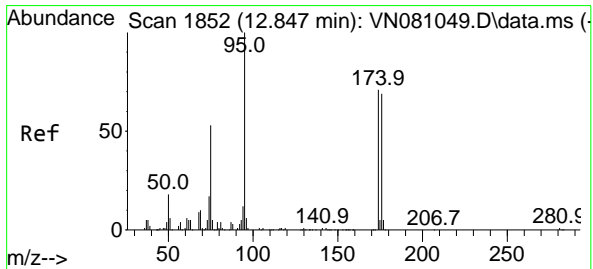
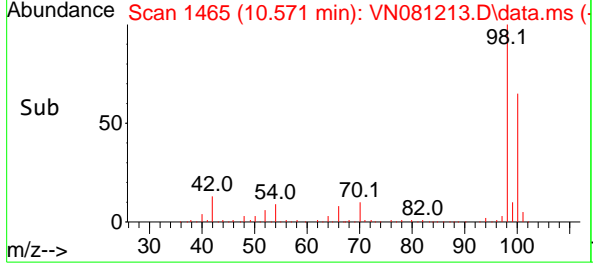
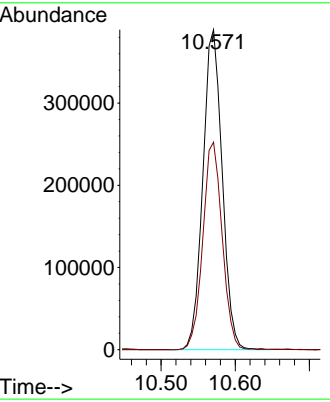
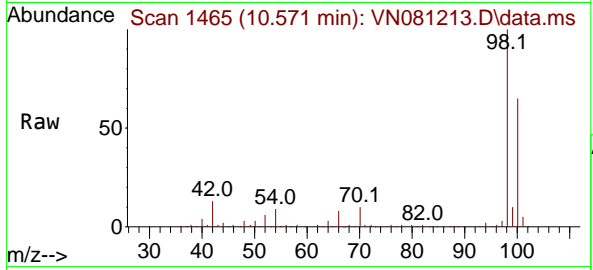




#50  
 Toluene-d8  
 Concen: 55.119 ug/l  
 RT: 10.571 min Scan# 1465  
 Delta R.T. 0.006 min  
 Lab File: VN081213.D  
 Acq: 27 Feb 2024 12:46

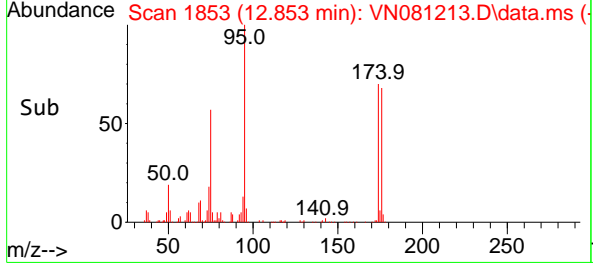
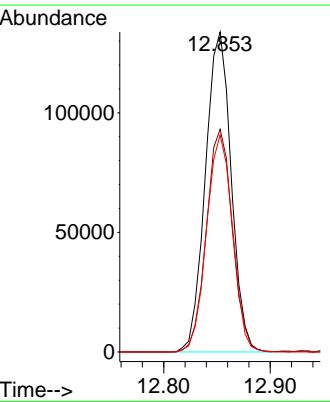
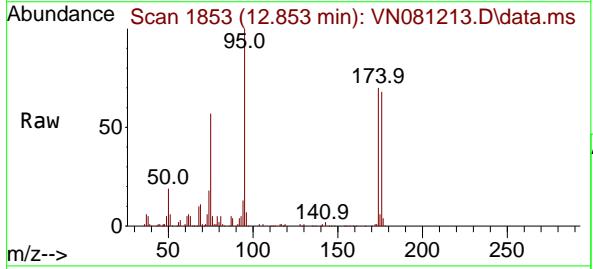
Instrument : MSVOA\_N  
 ClientSampleId : PB159267TB

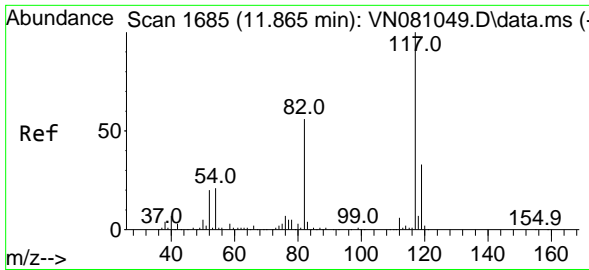
Tgt Ion: 98 Resp: 703669  
 Ion Ratio Lower Upper  
 98 100  
 100 65.1 51.4 77.0



#62  
 4-Bromofluorobenzene  
 Concen: 46.852 ug/l  
 RT: 12.853 min Scan# 1853  
 Delta R.T. 0.006 min  
 Lab File: VN081213.D  
 Acq: 27 Feb 2024 12:46

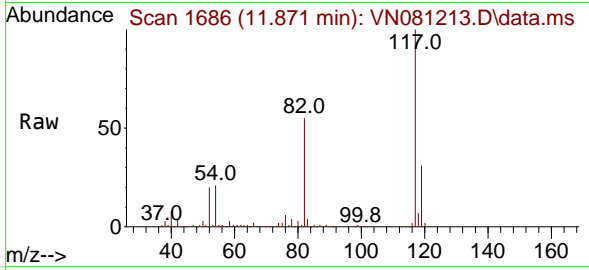
Tgt Ion: 95 Resp: 224750  
 Ion Ratio Lower Upper  
 95 100  
 174 70.1 0.0 120.4  
 176 68.4 0.0 121.0



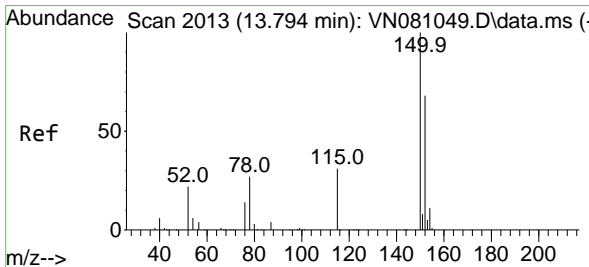
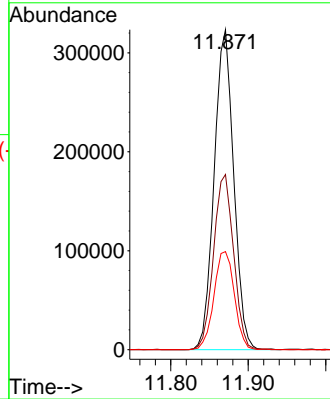
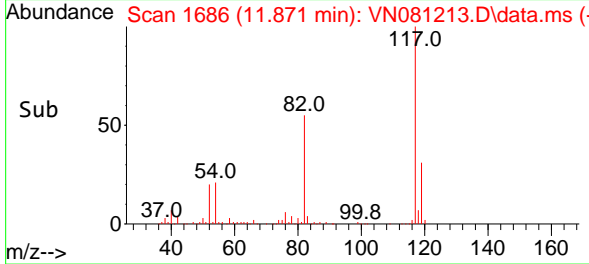


#63  
 Chlorobenzene-d5  
 Concen: 50.000 ug/l  
 RT: 11.871 min Scan# 1686  
 Delta R.T. 0.006 min  
 Lab File: VN081213.D  
 Acq: 27 Feb 2024 12:46

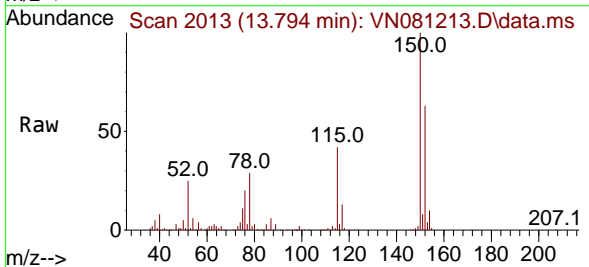
Instrument : MSVOA\_N  
 ClientSampleId : PB159267TB



Tgt Ion:117 Resp: 567585  
 Ion Ratio Lower Upper  
 117 100  
 82 54.8 52.7 79.1  
 119 30.6 25.3 37.9



#72  
 1,4-Dichlorobenzene-d4  
 Concen: 50.000 ug/l  
 RT: 13.794 min Scan# 2013  
 Delta R.T. -0.000 min  
 Lab File: VN081213.D  
 Acq: 27 Feb 2024 12:46



Tgt Ion:152 Resp: 217182  
 Ion Ratio Lower Upper  
 152 100  
 115 64.7 32.3 96.8  
 150 160.1 0.0 339.8

