

Data Path : Z:\VOASRV\HPCHEM1\MSVOA N\DATA\VN022820\  
 Data File : VN060280.D  
 Acq On : 28 Feb 2020 13:33  
 Operator : JC/MD  
 Sample : PB127123TB  
 Misc : 5.00mL/MSVOA N/WATER  
 ALS Vial : 11 Sample Multiplier: 1

Instrument :  
 MSVOA\_N  
 ClientSampleId :  
 PB127123TB

Quant Time: Feb 29 01:14:49 2020  
 Quant Method : Z:\VOASRV\HPCHEM1\MSVOA\_N\METHODS\82N022720W.M  
 Quant Title : SW846 8260  
 QLast Update : Thu Feb 27 13:52:50 2020  
 Response via : Initial Calibration

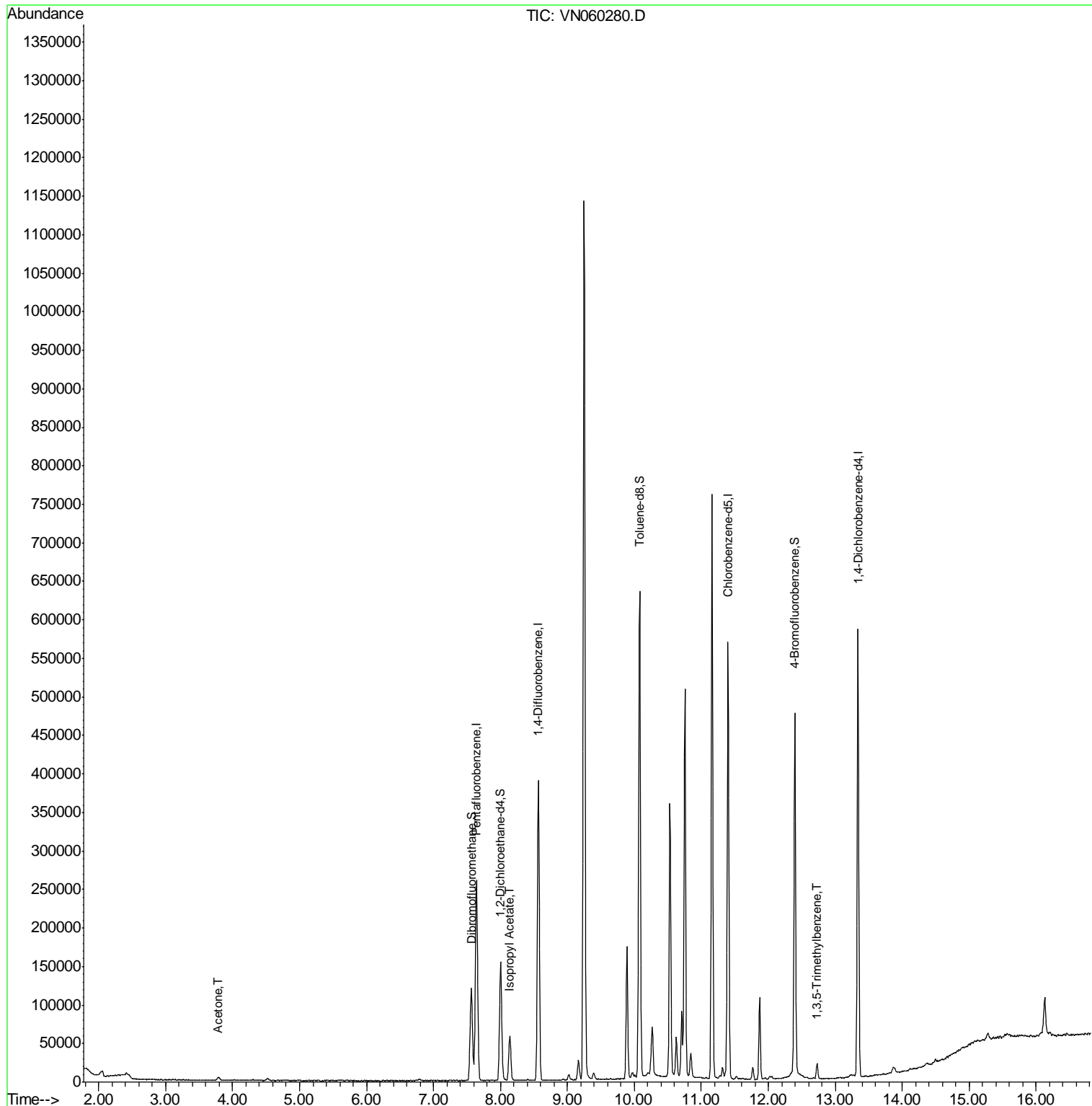
Internal Standards	R.T.	QIon	Response	Conc	Units	Dev(Min)
1) Pentafluorobenzene	7.64	168	210572	50.00	ug/l	0.00
34) 1,4-Difluorobenzene	8.57	114	342425	50.00	ug/l	0.00
63) Chlorobenzene-d5	11.40	117	319044	50.00	ug/l	0.00
72) 1,4-Dichlorobenzene-d4	13.34	152	150974	50.00	ug/l	0.00
System Monitoring Compounds						
33) 1,2-Dichloroethane-d4	8.00	65	132718	49.12	ug/l	0.00
Spiked Amount				50.000		
			Recovery	=	98.24%	
35) Dibromofluoromethane	7.57	113	92340	58.10	ug/l	0.00
Spiked Amount				50.000		
			Recovery	=	116.20%	
50) Toluene-d8	10.08	98	420897	52.32	ug/l	0.00
Spiked Amount				50.000		
			Recovery	=	104.64%	
62) 4-Bromofluorobenzene	12.40	95	156345	51.27	ug/l	0.00
Spiked Amount				50.000		
			Recovery	=	102.54%	
Target Compounds						
16) Acetone	3.79	43	7172	8.221	ug/l	90
43) Isopropyl Acetate	8.14	43	69079	12.769	ug/l #	90
80) 1,3,5-Trimethylbenzene	12.73	105	10686	1.134	ug/l	97

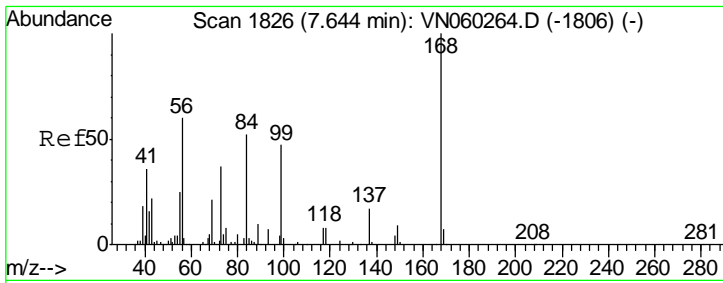
(#) = qualifier out of range (m) = manual integration (+) = signals summed

Data Path : Z:\VOASRV\HPCHEM1\MSVOA N\DATA\VN022820\  
 Data File : VN060280.D  
 Acq On : 28 Feb 2020 13:33  
 Operator : JC/MD  
 Sample : PB127123TB  
 Misc : 5.00mL/MSVOA N/WATER  
 ALS Vial : 11 Sample Multiplier: 1

Instrument :  
 MSVOA\_N  
 ClientSampleId :  
 PB127123TB

Quant Time: Feb 29 01:14:49 2020  
 Quant Method : Z:\VOASRV\HPCHEM1\MSVOA\_N\METHODS\82N022720W.M  
 Quant Title : SW846 8260  
 QLast Update : Thu Feb 27 13:52:50 2020  
 Response via : Initial Calibration

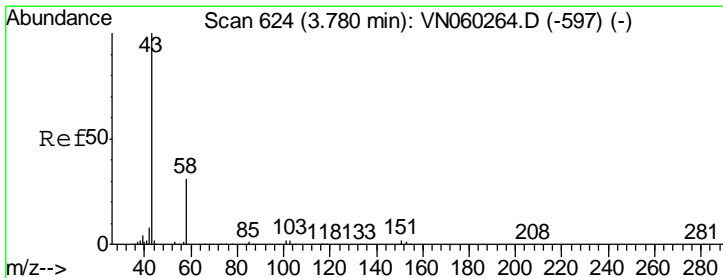
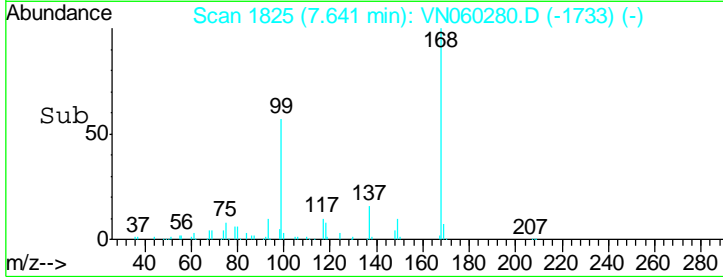
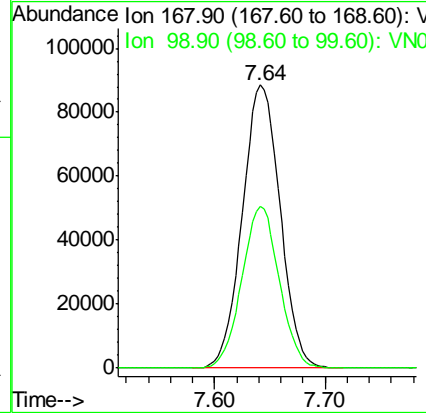
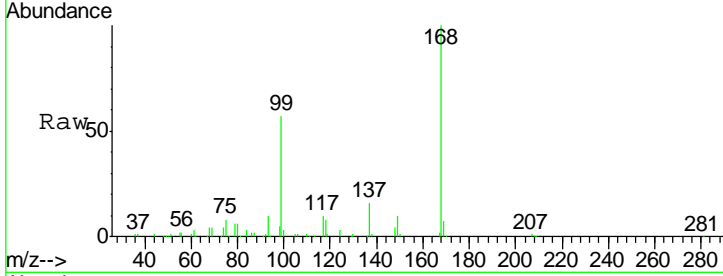




#1  
 Pentafluorobenzene  
 Concen: 50.000 ug/l  
 RT: 7.64 min Scan# 1825  
 Delta R.T. -0.00 min  
 Lab File: VN060280.D  
 Acq: 28 Feb 2020 13:33

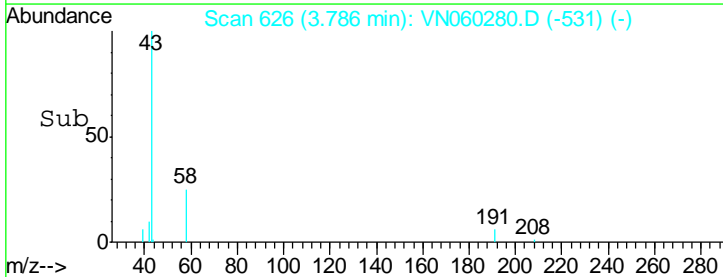
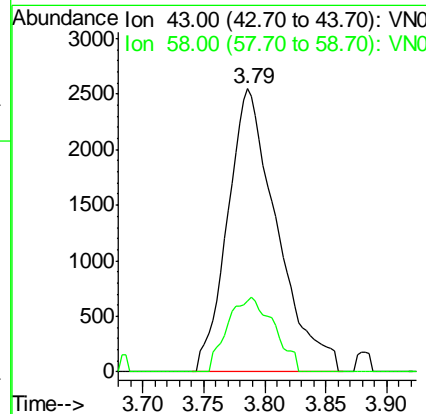
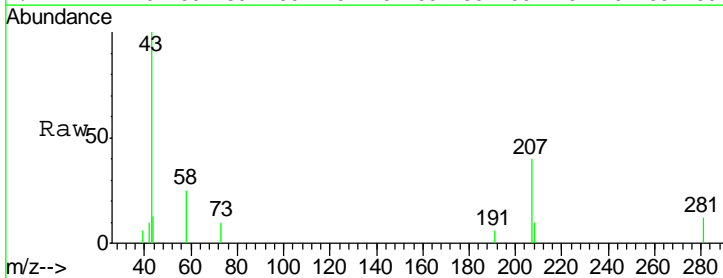
Instrument :  
 MSVOA\_N  
 ClientSampled :  
 PB127123TB

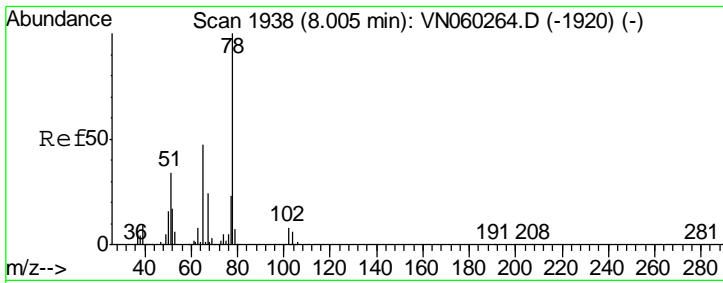
Tgt Ion: 168 Resp: 210572  
 Ion Ratio Lower Upper  
 168 100  
 99 57.2 44.7 67.1



#16  
 Acetone  
 Concen: 8.221 ug/l  
 RT: 3.79 min Scan# 626  
 Delta R.T. 0.01 min  
 Lab File: VN060280.D  
 Acq: 28 Feb 2020 13:33

Tgt Ion: 43 Resp: 7172  
 Ion Ratio Lower Upper  
 43 100  
 58 25.2 24.6 36.8

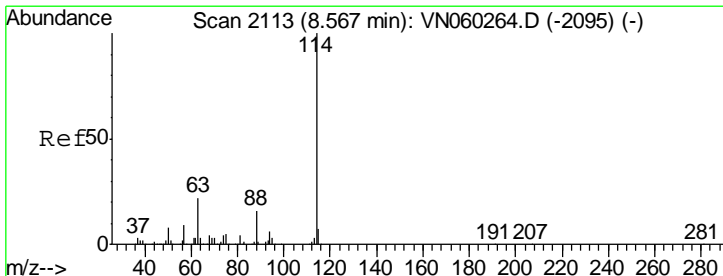
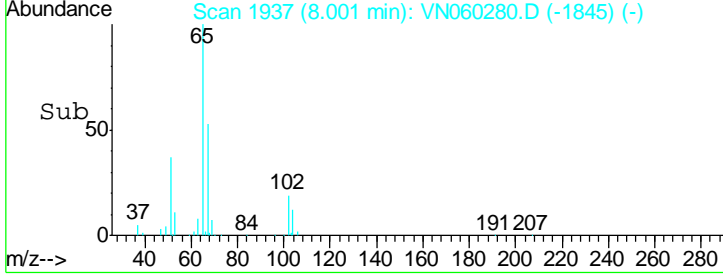
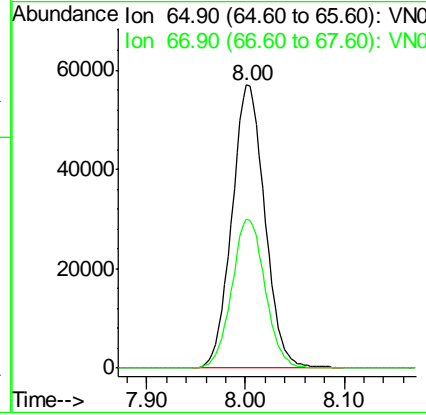
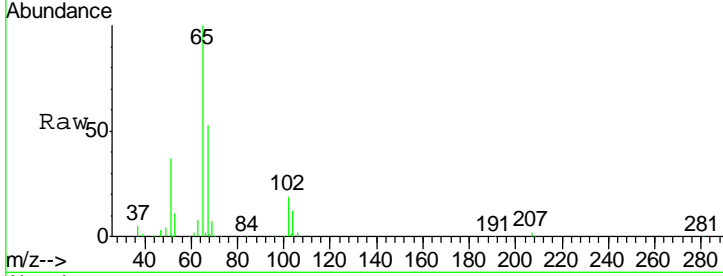




#33  
 1,2-Dichloroethane-d4  
 Concen: 49.124 ug/l  
 RT: 8.00 min Scan# 1937  
 Delta R.T. -0.00 min  
 Lab File: VN060280.D  
 Acq: 28 Feb 2020 13:33

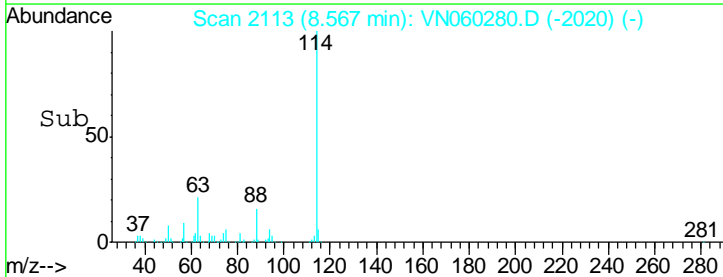
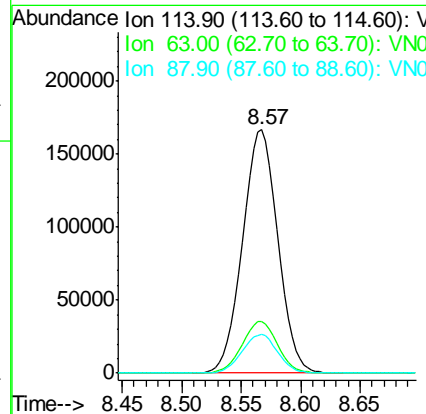
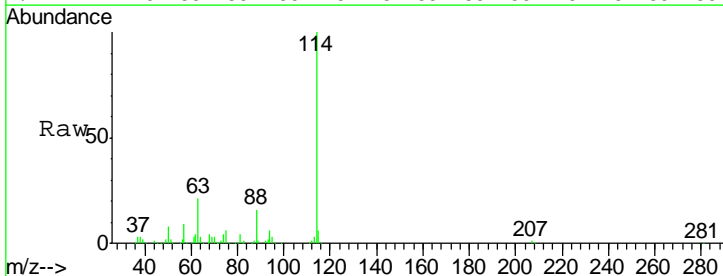
**Instrument :**  
 MSVOA\_N  
**ClientSampled :**  
 PB127123TB

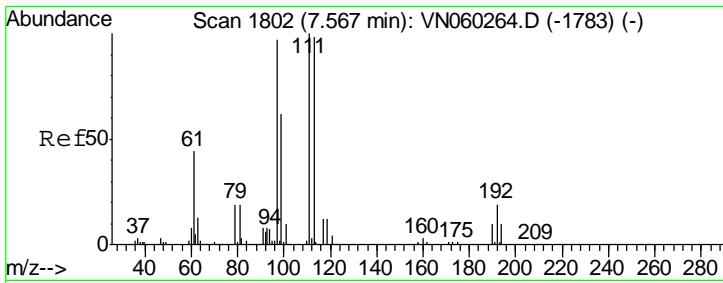
Tgt Ion	Resp	Lower	Upper
65	100		
67	53.2	0.0	103.8



#34  
 1,4-Difluorobenzene  
 Concen: 50.000 ug/l  
 RT: 8.57 min Scan# 2113  
 Delta R.T. -0.00 min  
 Lab File: VN060280.D  
 Acq: 28 Feb 2020 13:33

Tgt Ion	Resp	Lower	Upper
114	100		
63	21.2	0.0	43.2
88	15.9	0.0	31.6

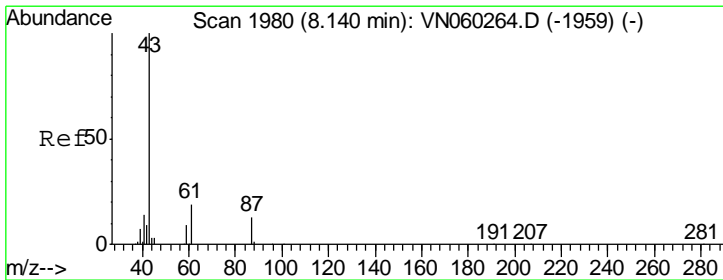
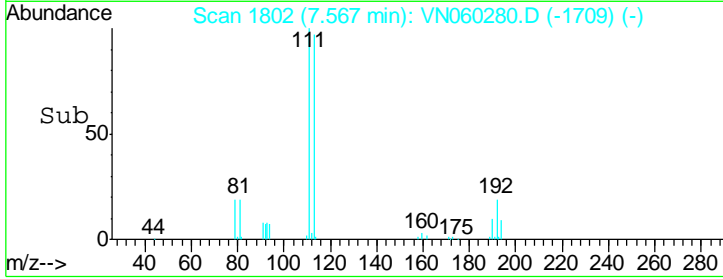
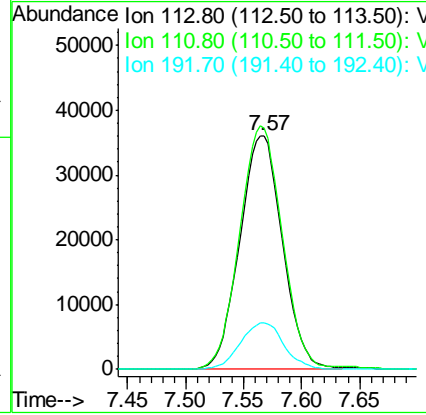
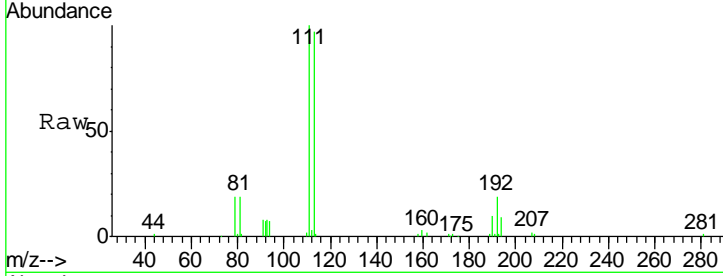




#35  
 Dibromofluoromethane  
 Concen: 58.096 ug/l  
 RT: 7.57 min Scan# 1802  
 Delta R.T. -0.00 min  
 Lab File: VN060280.D  
 Acq: 28 Feb 2020 13:33

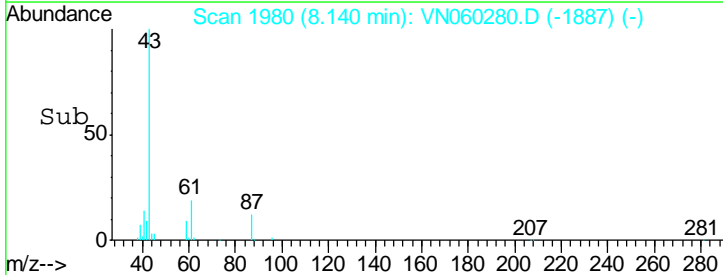
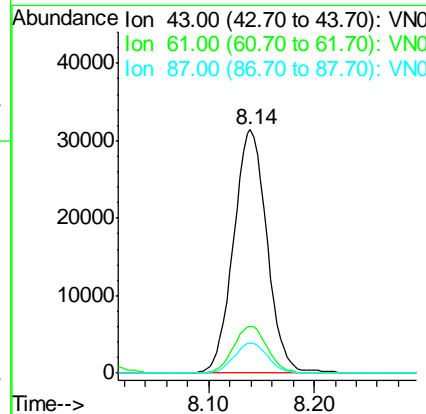
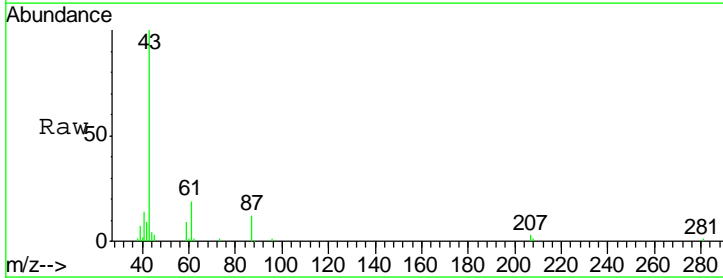
Instrument :  
 MSVOA\_N  
 ClientSampleId :  
 PB127123TB

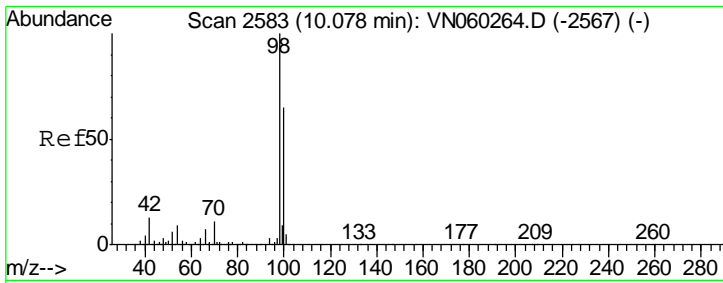
Tgt Ion	Resp	Lower	Upper
113	92340		
111	104.7	82.4	123.6
192	20.3	16.2	24.2



#43  
 Isopropyl Acetate  
 Concen: 12.769 ug/l  
 RT: 8.14 min Scan# 1980  
 Delta R.T. -0.00 min  
 Lab File: VN060280.D  
 Acq: 28 Feb 2020 13:33

Tgt Ion	Resp	Lower	Upper
43	69079		
43	100		
61	19.4	20.9	31.3#
87	12.3	10.6	16.0

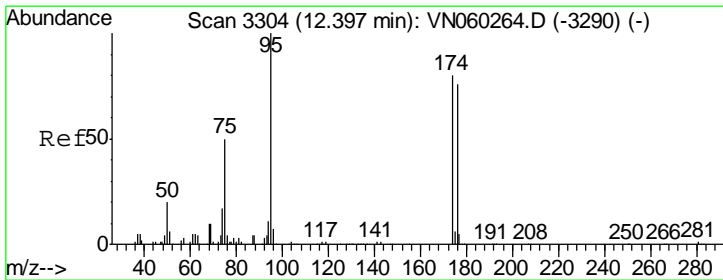
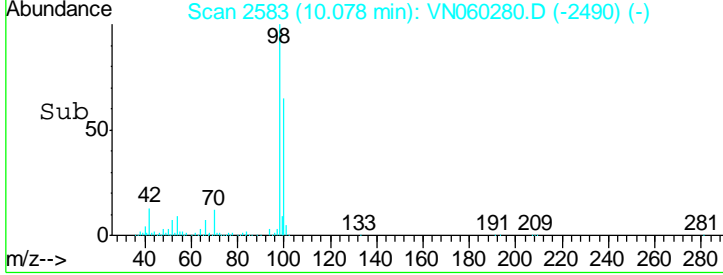
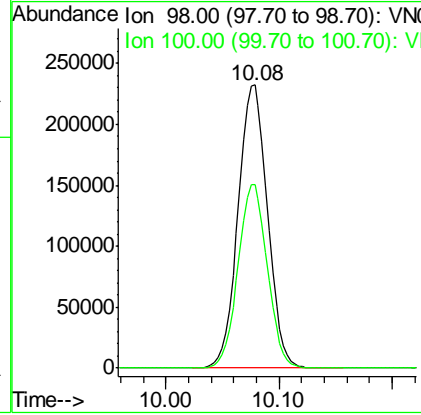
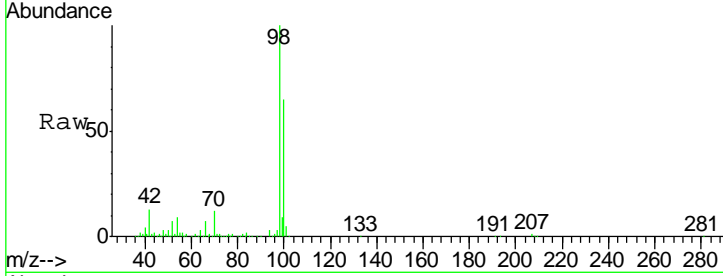




#50  
 Toluene-d8  
 Concen: 52.322 ug/l  
 RT: 10.08 min Scan# 2583  
 Delta R.T. -0.00 min  
 Lab File: VN060280.D  
 Acq: 28 Feb 2020 13:33

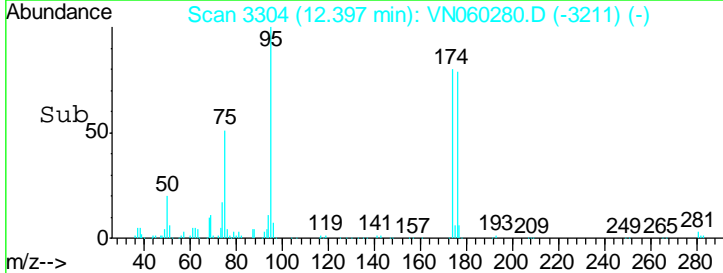
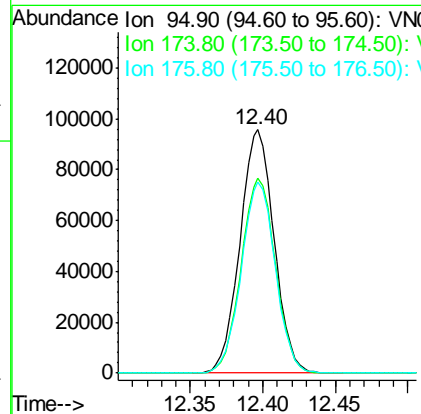
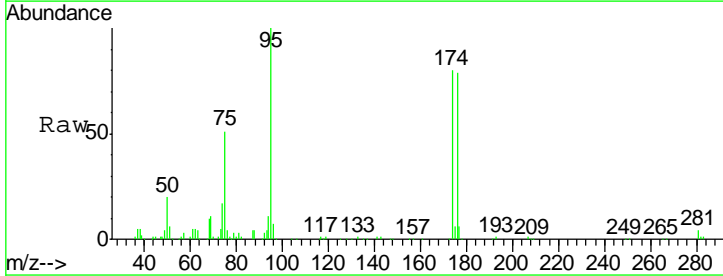
Instrument : MSVOA\_N  
 ClientSampled : PB127123TB

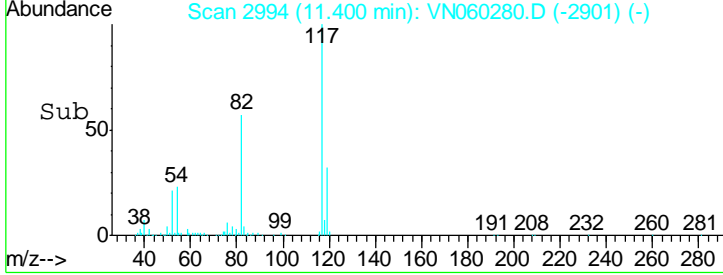
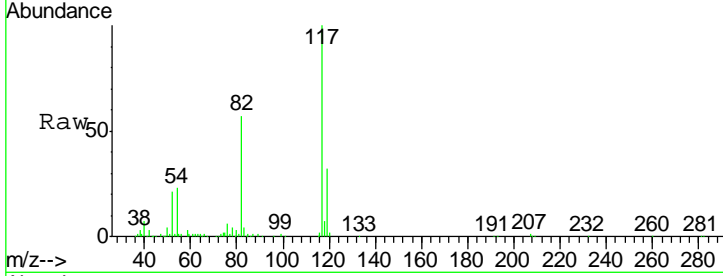
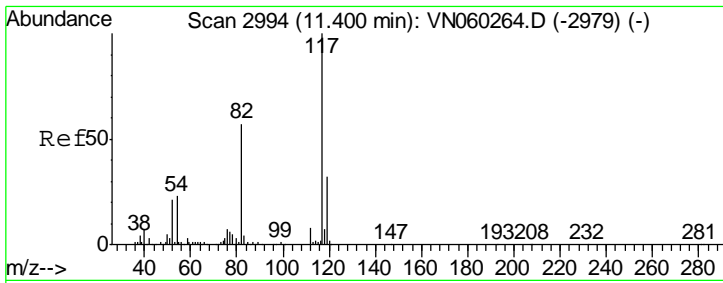
Tgt Ion	Resp	Lower	Upper
98	420897		
100	64.6	52.2	78.2



#62  
 4-Bromofluorobenzene  
 Concen: 51.271 ug/l  
 RT: 12.40 min Scan# 3304  
 Delta R.T. -0.00 min  
 Lab File: VN060280.D  
 Acq: 28 Feb 2020 13:33

Tgt Ion	Resp	Lower	Upper
95	156345		
174	80.5	0.0	159.2
176	78.6	0.0	153.8

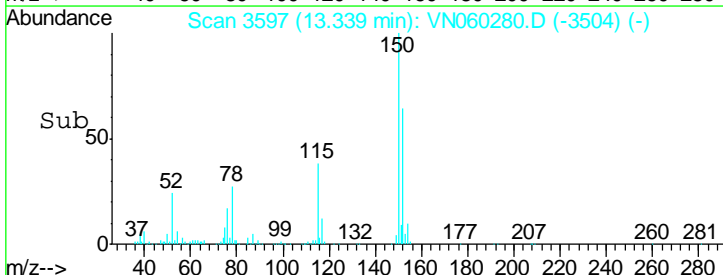
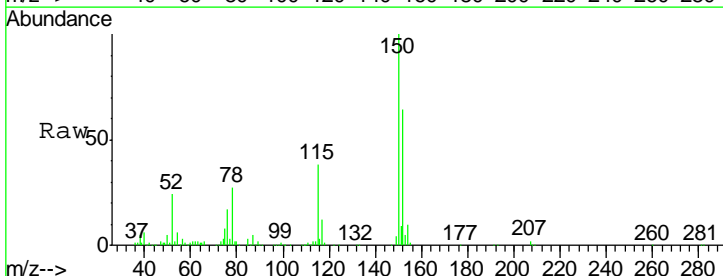
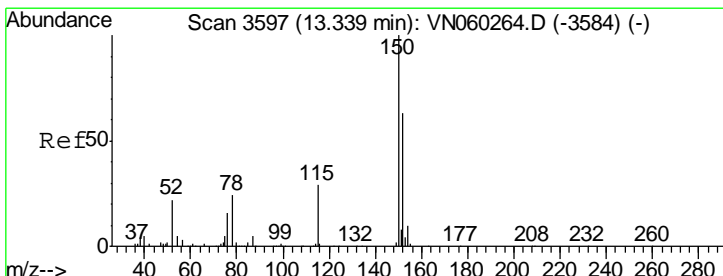
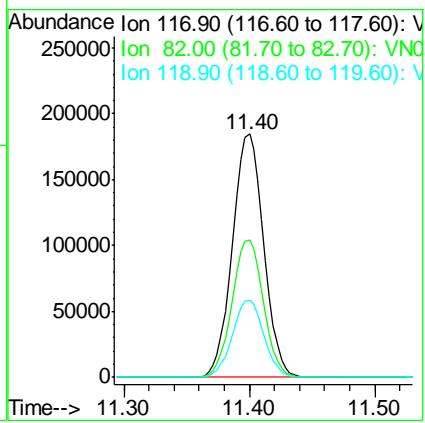




#63  
 Chlorobenzene-d5  
 Concen: 50.000 ug/l  
 RT: 11.40 min Scan# 2994  
 Delta R.T. -0.00 min  
 Lab File: VN060280.D  
 Acq: 28 Feb 2020 13:33

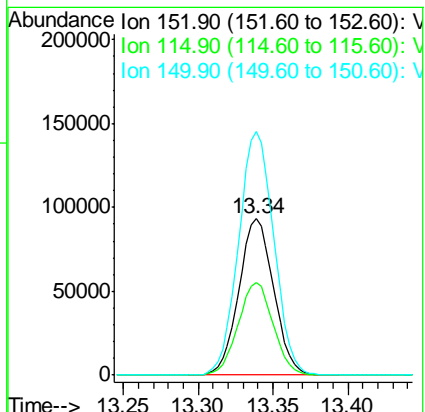
Instrument : MSVOA\_N  
 ClientSampleID : PB127123TB

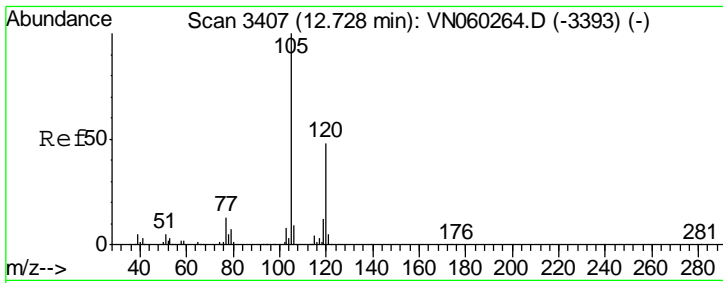
Tgt Ion	Resp	Lower	Upper
117	319044		
82	56.6	45.8	68.6
119	31.8	25.8	38.8



#72  
 1,4-Dichlorobenzene-d4  
 Concen: 50.000 ug/l  
 RT: 13.34 min Scan# 3597  
 Delta R.T. -0.00 min  
 Lab File: VN060280.D  
 Acq: 28 Feb 2020 13:33

Tgt Ion	Resp	Lower	Upper
152	150974		
115	59.3	30.0	90.0
150	158.0	0.0	349.6





#80  
 1,3,5-Trimethylbenzene  
 Concen: 1.134 ug/l  
 RT: 12.73 min Scan# 3407  
 Delta R.T. -0.00 min  
 Lab File: VN060280.D  
 Acq: 28 Feb 2020 13:33

**Instrument :**  
 MSVOA\_N  
**ClientSampled :**  
 PB127123TB

Tot Ion	105	Resp	10686
Ion Ratio	Lower	Upper	
105	100		
120	46.4	24.1	72.4

