

Data Path : Z:\voasrv\HPCHEM1\MSVOA\_N\Data\VN022822\  
 Data File : VN071103.D  
 Acq On : 28 Feb 2022 18:44  
 Operator : JC\MD  
 Sample : N1689-02  
 Misc : 5.0mL/MSVOA\_N/WATER  
 ALS Vial : 18 Sample Multiplier: 1

Instrument :  
 MSVOA\_N  
 ClientSampleId :  
 MW-38I

Quant Time: Mar 01 04:24:00 2022  
 Quant Method : Z:\voasrv\HPCHEM1\MSVOA\_N\methods\82N021522W.M  
 Quant Title : SW846 8260  
 QLast Update : Mon Feb 21 07:57:15 2022  
 Response via : Initial Calibration

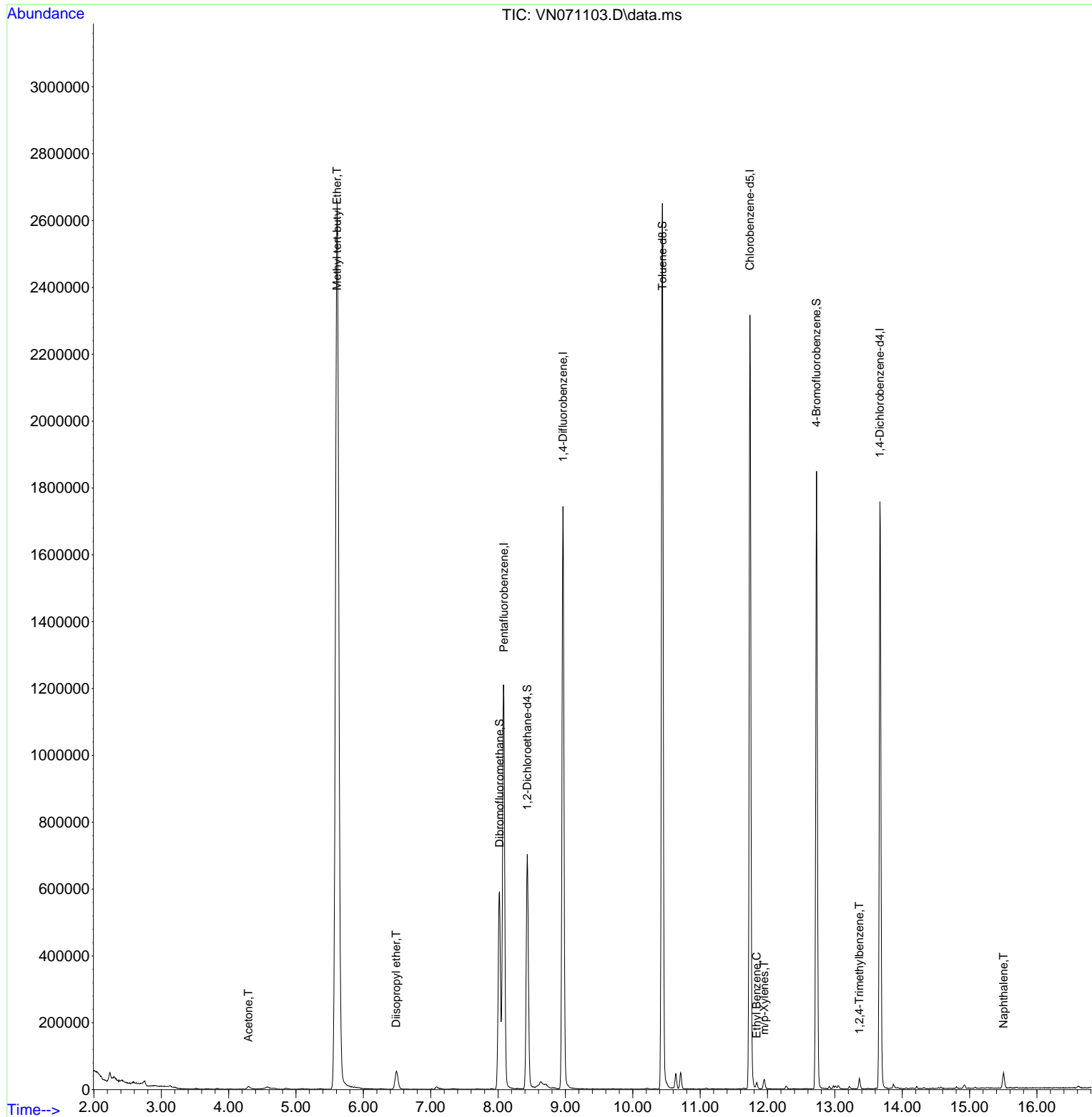
Compound	R.T.	QIon	Response	Conc	Units	Dev(Min)
-----						
Internal Standards						
1) Pentafluorobenzene	8.086	168	965311	50.000	ug/l	0.00
34) 1,4-Difluorobenzene	8.963	114	1532720	50.000	ug/l	0.00
63) Chlorobenzene-d5	11.739	117	1365130	50.000	ug/l	0.00
72) 1,4-Dichlorobenzene-d4	13.668	152	488675	50.000	ug/l	0.00
System Monitoring Compounds						
33) 1,2-Dichloroethane-d4	8.433	65	572823	51.948	ug/l	0.00
Spiked Amount	50.000	Range 61 - 141	Recovery	=	103.900%	
35) Dibromofluoromethane	8.022	113	448646	49.212	ug/l	0.00
Spiked Amount	50.000	Range 69 - 133	Recovery	=	98.420%	
50) Toluene-d8	10.439	98	1868099	51.025	ug/l	0.00
Spiked Amount	50.000	Range 65 - 126	Recovery	=	102.040%	
62) 4-Bromofluorobenzene	12.727	95	643639	49.183	ug/l	0.00
Spiked Amount	50.000	Range 58 - 135	Recovery	=	98.360%	
Target Compounds						
						Qvalue
16) Acetone	4.293	43	11754	1.936	ug/l	99
19) Methyl tert-butyl Ether	5.610	73	4521589	136.395	ug/l	96
22) Diisopropyl ether	6.487	45	69829	2.020	ug/l #	86
67) Ethyl Benzene	11.839	91	12511	0.243	ug/l	93
68) m/p-Xylenes	11.951	106	9532	0.479	ug/l	96
84) 1,2,4-Trimethylbenzene	13.363	105	18133	0.578	ug/l	97
95) Naphthalene	15.504	128	43893	6.798	ug/l	99

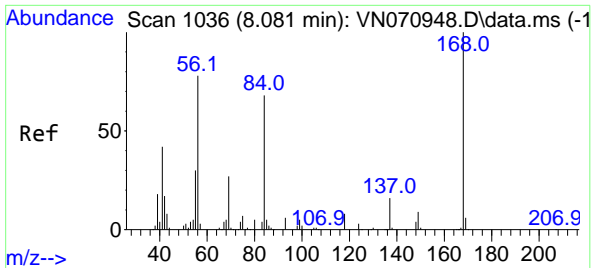
(#) = qualifier out of range (m) = manual integration (+) = signals summed

Data Path : Z:\voasrv\HPCHEM1\MSVOA\_N\Data\VN022822\  
 Data File : VN071103.D  
 Acq On : 28 Feb 2022 18:44  
 Operator : JC\MD  
 Sample : N1689-02  
 Misc : 5.0mL/MSVOA\_N/WATER  
 ALS Vial : 18 Sample Multiplier: 1

Instrument :  
 MSVOA\_N  
 ClientSampleId :  
 MW-38I

Quant Time: Mar 01 04:24:00 2022  
 Quant Method : Z:\voasrv\HPCHEM1\MSVOA\_N\methods\82N021522W.M  
 Quant Title : SW846 8260  
 QLast Update : Mon Feb 21 07:57:15 2022  
 Response via : Initial Calibration

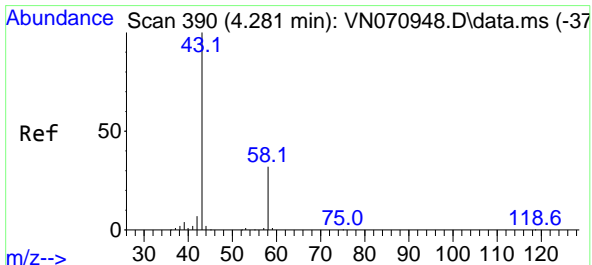
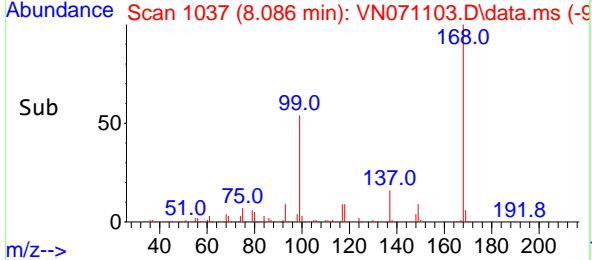
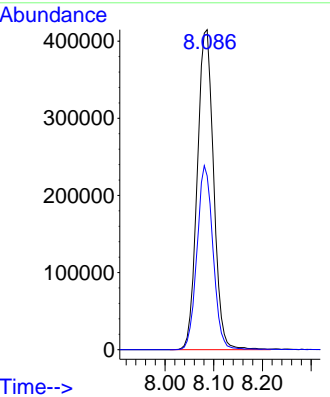
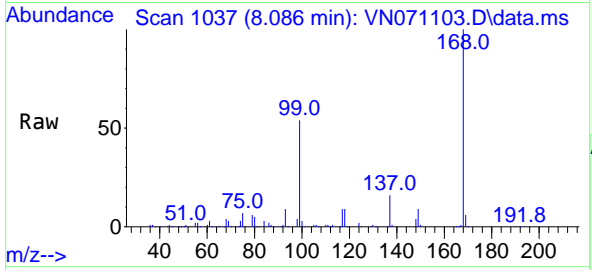




#1  
 Pentafluorobenzene  
 Concen: 50.000 ug/l  
 RT: 8.086 min Scan# 1036  
 Delta R.T. 0.005 min  
 Lab File: VN071103.D  
 Acq: 28 Feb 2022 18:44

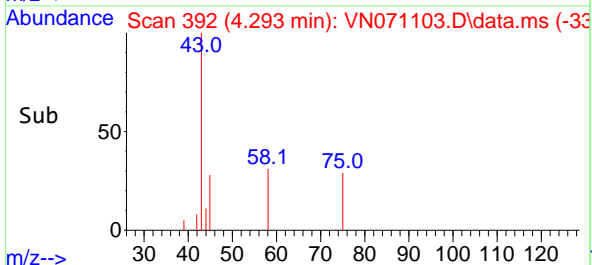
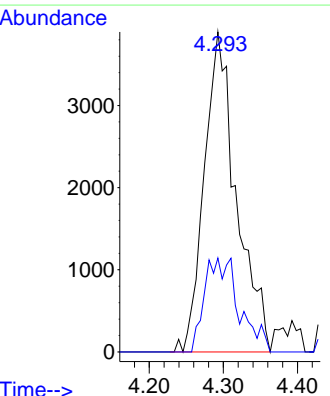
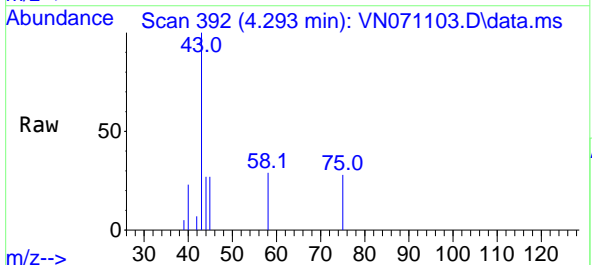
Instrument : MSVOA\_N  
 ClientSampleId : MW-38I

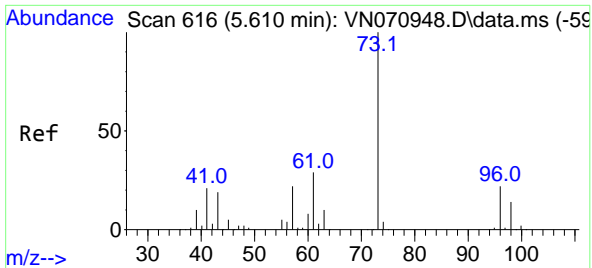
Tgt Ion:168 Resp: 965311  
 Ion Ratio Lower Upper  
 168 100  
 99 54.3 41.3 61.9



#16  
 Acetone  
 Concen: 1.936 ug/l  
 RT: 4.293 min Scan# 392  
 Delta R.T. 0.012 min  
 Lab File: VN071103.D  
 Acq: 28 Feb 2022 18:44

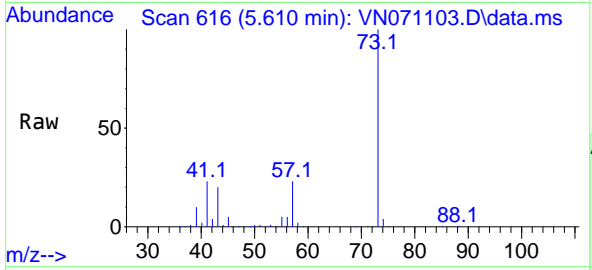
Tgt Ion: 43 Resp: 11754  
 Ion Ratio Lower Upper  
 43 100  
 58 29.3 23.1 34.7



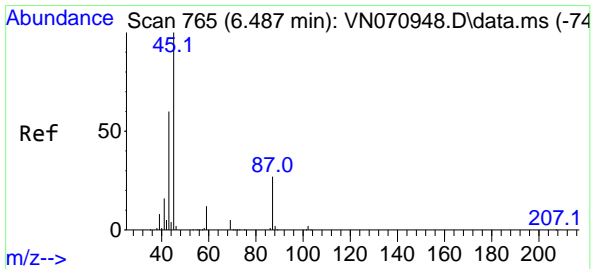
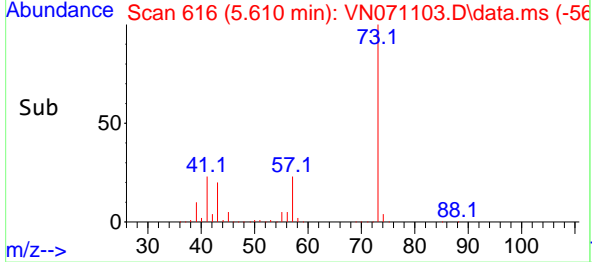
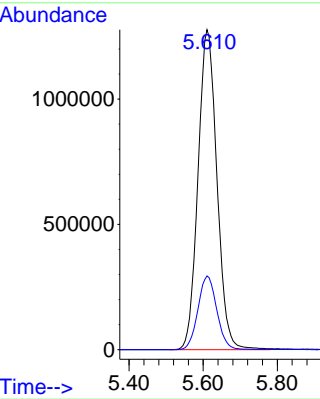


#19  
 Methyl tert-butyl Ether  
 Concen: 136.395 ug/l  
 RT: 5.610 min Scan# 61  
 Delta R.T. -0.000 min  
 Lab File: VN071103.D  
 Acq: 28 Feb 2022 18:44

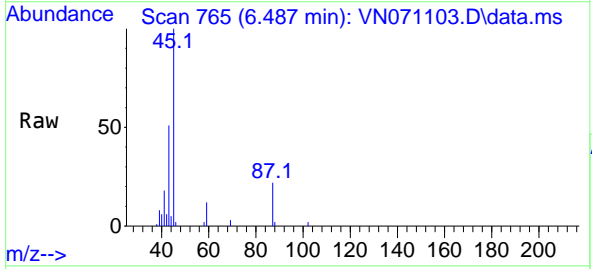
Instrument : MSVOA\_N  
 ClientSampleId : MW-38I



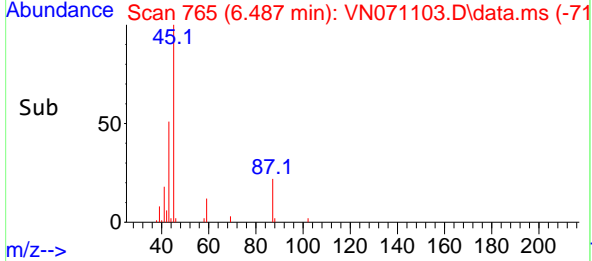
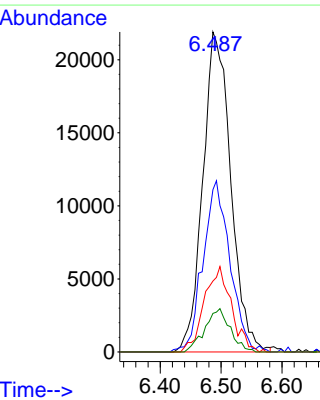
Tgt Ion: 73 Resp: 4521589  
 Ion Ratio Lower Upper  
 73 100  
 57 23.0 16.8 25.2

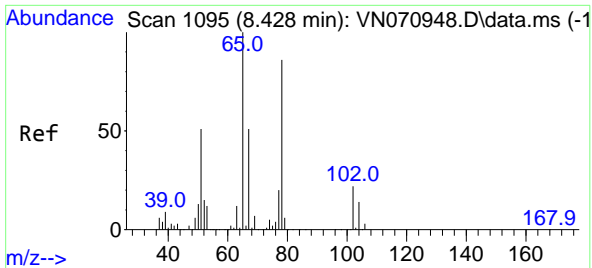


#22  
 Diisopropyl ether  
 Concen: 2.020 ug/l  
 RT: 6.487 min Scan# 765  
 Delta R.T. -0.000 min  
 Lab File: VN071103.D  
 Acq: 28 Feb 2022 18:44



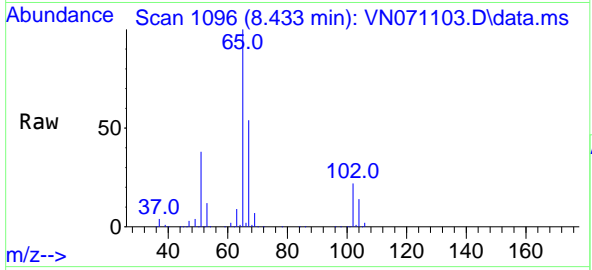
Tgt Ion: 45 Resp: 69829  
 Ion Ratio Lower Upper  
 45 100  
 43 50.7 51.7 77.5#  
 87 22.1 23.2 34.8#  
 59 12.0 9.4 14.0



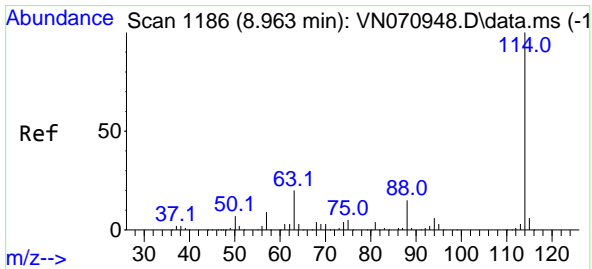
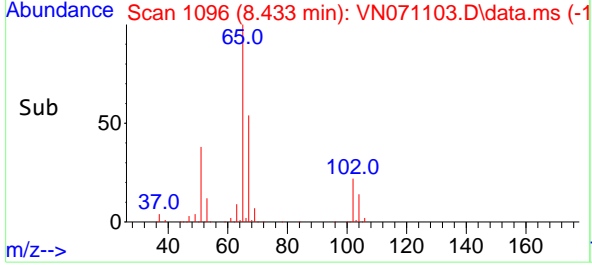
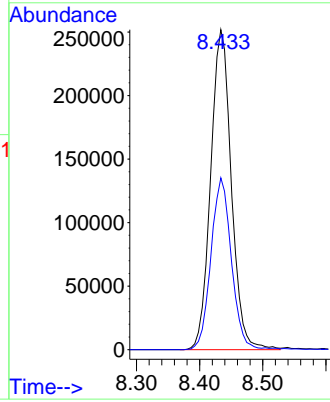


#33  
 1,2-Dichloroethane-d4  
 Concen: 51.948 ug/l  
 RT: 8.433 min Scan# 1095  
 Delta R.T. 0.006 min  
 Lab File: VN071103.D  
 Acq: 28 Feb 2022 18:44

Instrument : MSVOA\_N  
 ClientSampleId : MW-38I

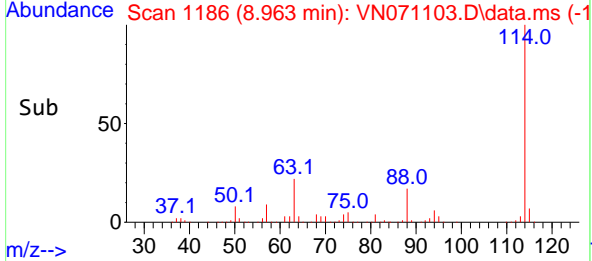
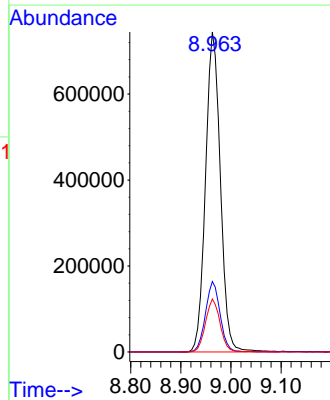
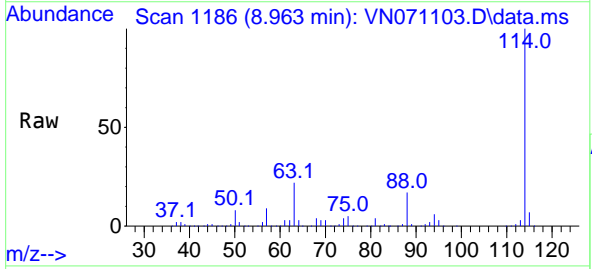


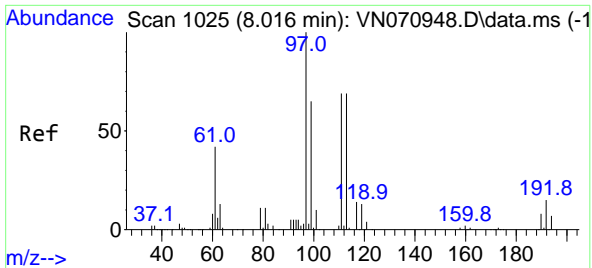
Tgt Ion: 65 Resp: 572823  
 Ion Ratio Lower Upper  
 65 100  
 67 53.4 0.0 103.0



#34  
 1,4-Difluorobenzene  
 Concen: 50.000 ug/l  
 RT: 8.963 min Scan# 1186  
 Delta R.T. -0.000 min  
 Lab File: VN071103.D  
 Acq: 28 Feb 2022 18:44

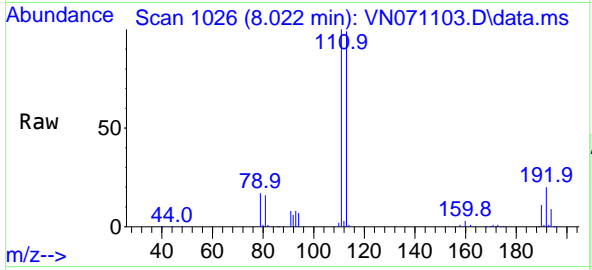
Tgt Ion: 114 Resp: 1532720  
 Ion Ratio Lower Upper  
 114 100  
 63 22.0 0.0 37.8  
 88 16.6 0.0 27.4



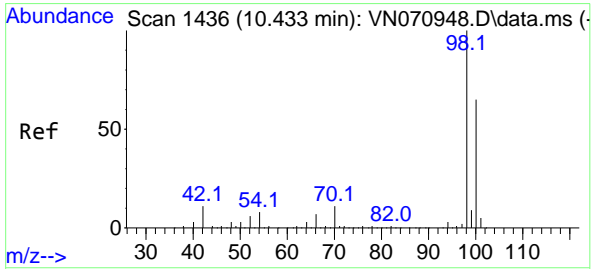
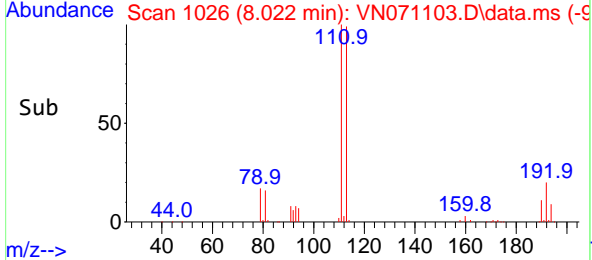
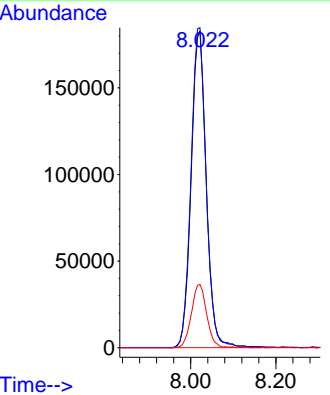


#35  
 Dibromofluoromethane  
 Concen: 49.212 ug/l  
 RT: 8.022 min Scan# 1026  
 Delta R.T. 0.006 min  
 Lab File: VN071103.D  
 Acq: 28 Feb 2022 18:44

Instrument : MSVOA\_N  
 ClientSampleId : MW-38I

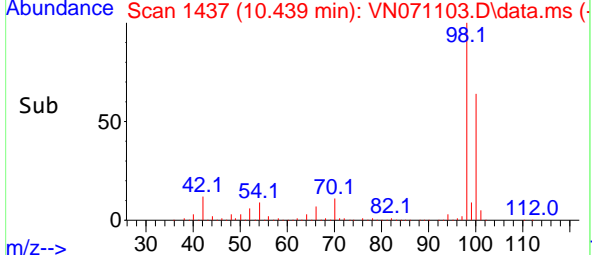
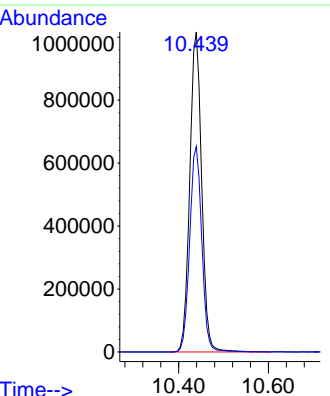
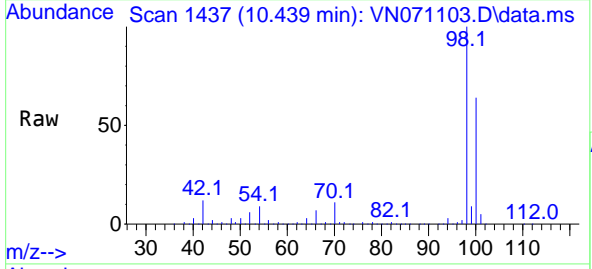


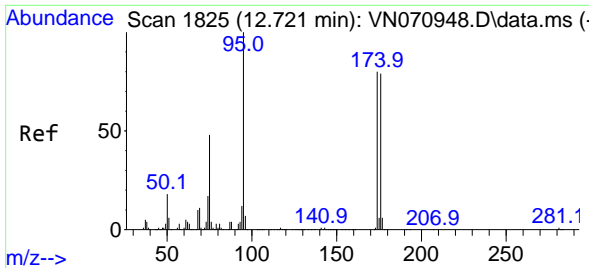
Tgt Ion:113 Resp: 448646  
 Ion Ratio Lower Upper  
 113 100  
 111 101.8 82.2 123.2  
 192 20.3 16.9 25.3



#50  
 Toluene-d8  
 Concen: 51.025 ug/l  
 RT: 10.439 min Scan# 1437  
 Delta R.T. 0.006 min  
 Lab File: VN071103.D  
 Acq: 28 Feb 2022 18:44

Tgt Ion: 98 Resp: 1868099  
 Ion Ratio Lower Upper  
 98 100  
 100 65.2 50.4 75.6



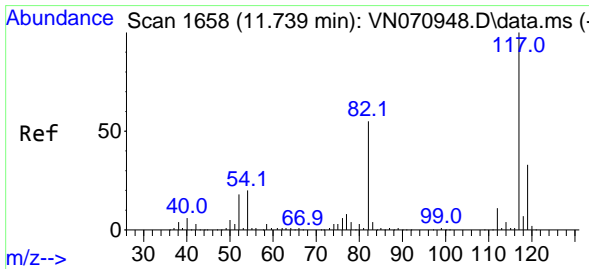
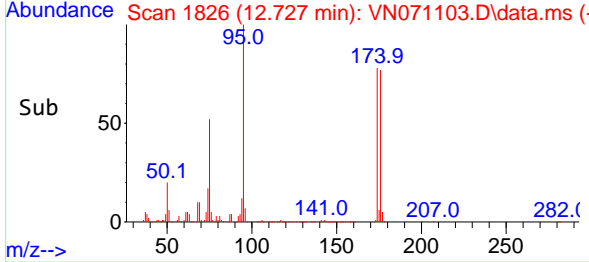
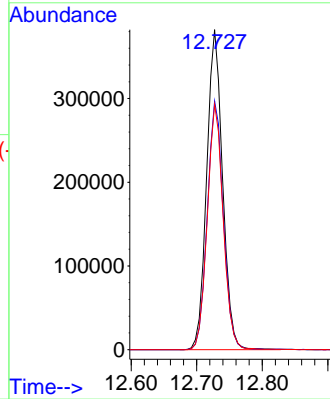
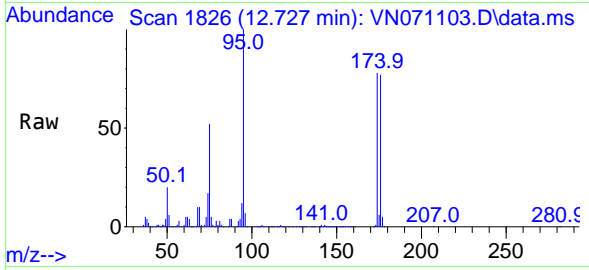


#62  
 4-Bromofluorobenzene  
 Concen: 49.183 ug/l  
 RT: 12.727 min Scan# 1826  
 Delta R.T. 0.006 min  
 Lab File: VN071103.D  
 Acq: 28 Feb 2022 18:44

Instrument : MSVOA\_N  
 ClientSampleId : MW-38I

Tgt Ion: 95 Resp: 643639

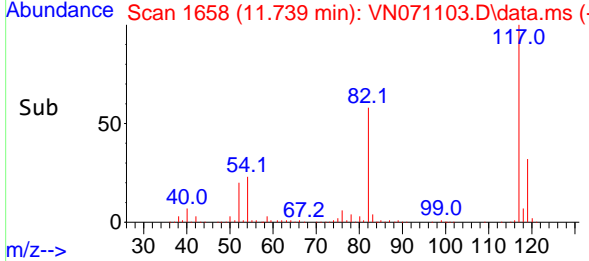
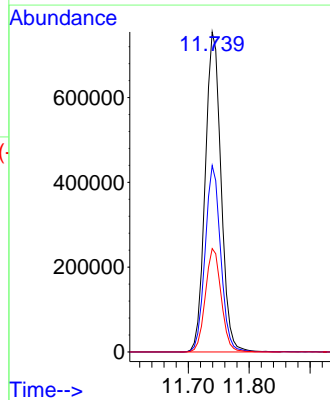
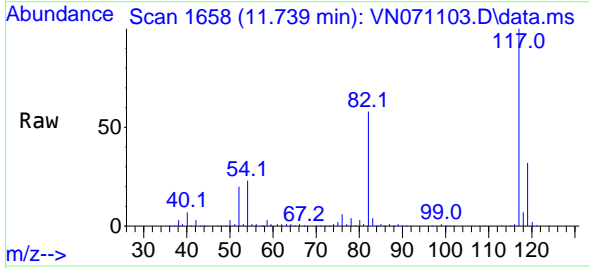
Ion	Ratio	Lower	Upper
95	100		
174	78.8	0.0	187.2
176	76.8	0.0	181.4

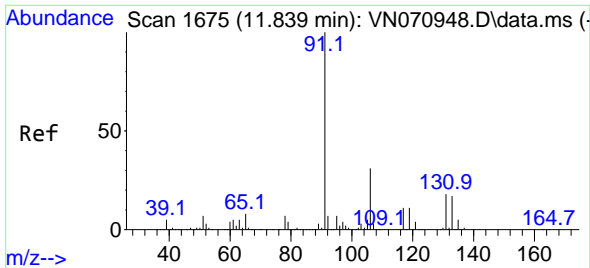


#63  
 Chlorobenzene-d5  
 Concen: 50.000 ug/l  
 RT: 11.739 min Scan# 1658  
 Delta R.T. -0.000 min  
 Lab File: VN071103.D  
 Acq: 28 Feb 2022 18:44

Tgt Ion: 117 Resp: 1365130

Ion	Ratio	Lower	Upper
117	100		
82	58.3	42.4	63.6
119	32.3	25.4	38.2

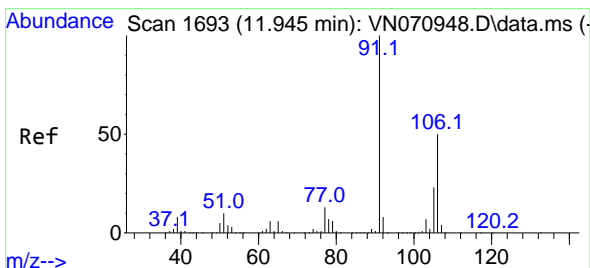
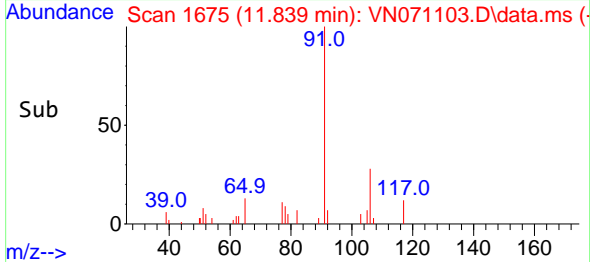
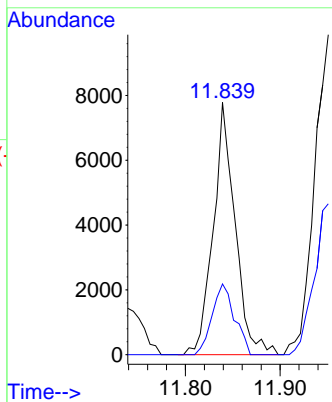
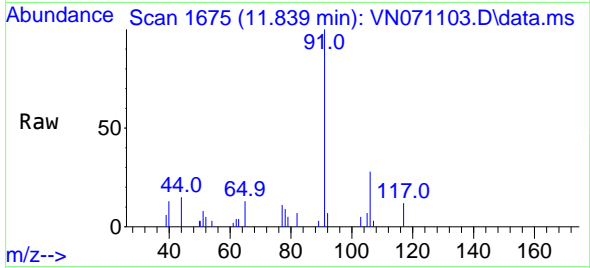




#67  
 Ethyl Benzene  
 Concen: 0.243 ug/l  
 RT: 11.839 min Scan# 1675  
 Delta R.T. -0.000 min  
 Lab File: VN071103.D  
 Acq: 28 Feb 2022 18:44

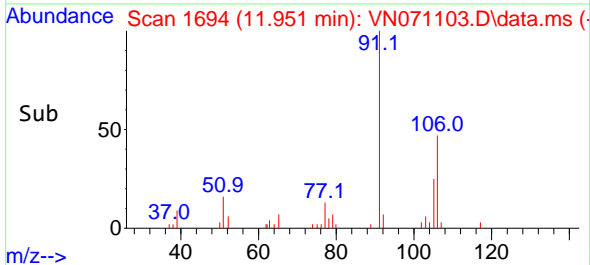
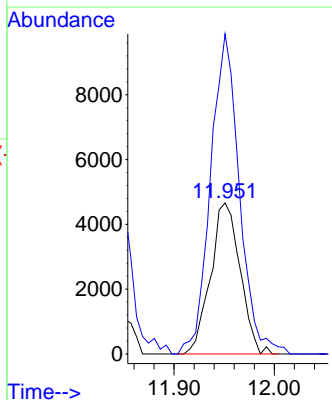
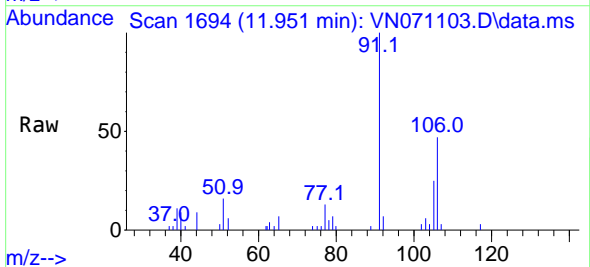
Instrument : MSVOA\_N  
 ClientSampleId : MW-38I

Tgt Ion: 91 Resp: 12511  
 Ion Ratio Lower Upper  
 91 100  
 106 28.1 25.7 38.5

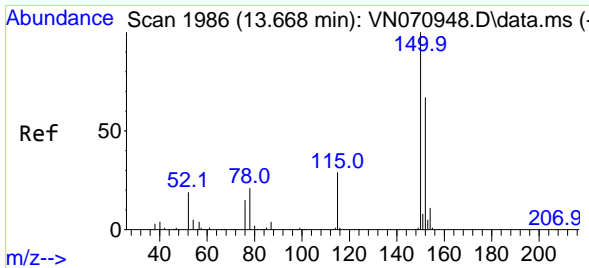


#68  
 m/p-Xylenes  
 Concen: 0.479 ug/l  
 RT: 11.951 min Scan# 1694  
 Delta R.T. 0.006 min  
 Lab File: VN071103.D  
 Acq: 28 Feb 2022 18:44

Tgt Ion: 106 Resp: 9532  
 Ion Ratio Lower Upper  
 106 100  
 91 207.4 160.6 240.8

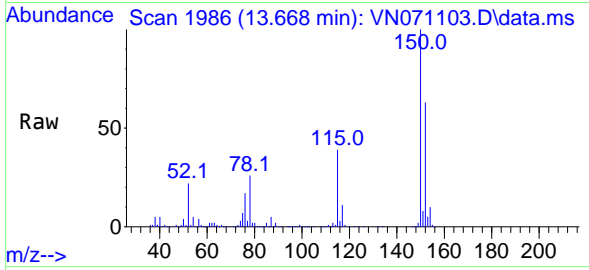




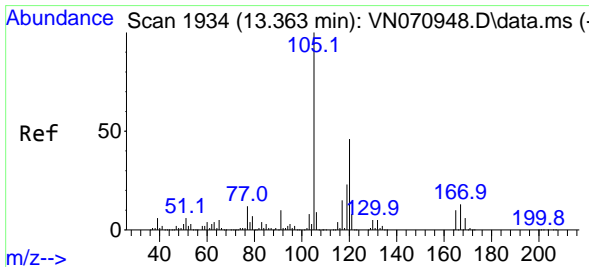
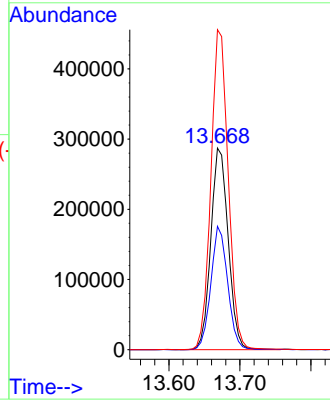
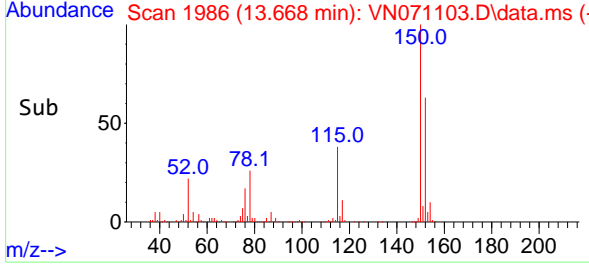


#72  
 1,4-Dichlorobenzene-d4  
 Concen: 50.000 ug/l  
 RT: 13.668 min Scan# 1986  
 Delta R.T. -0.000 min  
 Lab File: VN071103.D  
 Acq: 28 Feb 2022 18:44

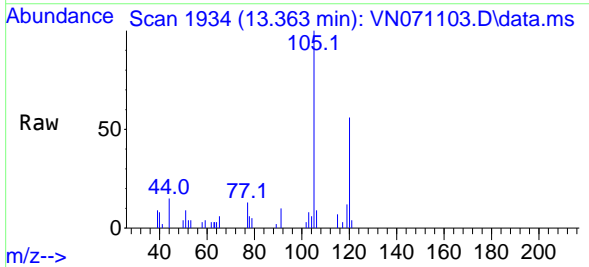
Instrument : MSVOA\_N  
 ClientSampleId : MW-38I



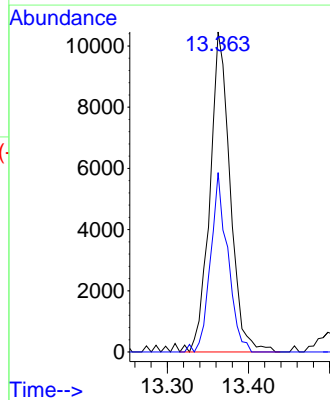
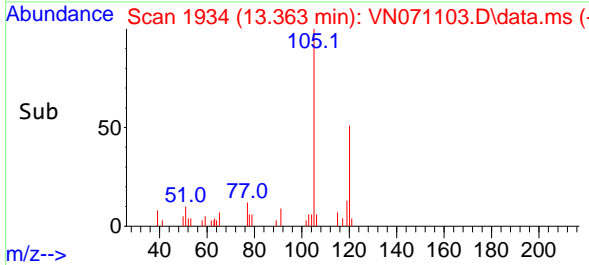
Tgt Ion:152 Resp: 488675  
 Ion Ratio Lower Upper  
 152 100  
 115 59.3 27.5 82.5  
 150 158.3 0.0 344.4

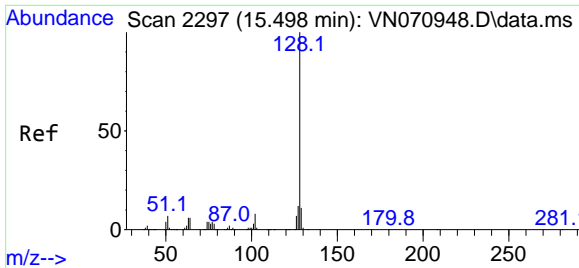


#84  
 1,2,4-Trimethylbenzene  
 Concen: 0.578 ug/l  
 RT: 13.363 min Scan# 1934  
 Delta R.T. -0.000 min  
 Lab File: VN071103.D  
 Acq: 28 Feb 2022 18:44



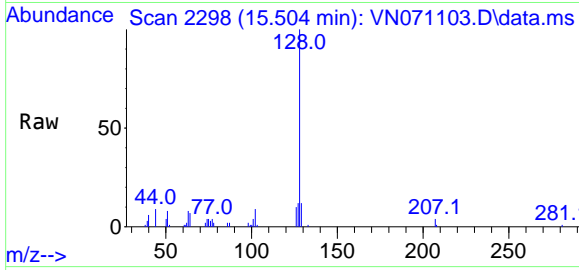
Tgt Ion:105 Resp: 18133  
 Ion Ratio Lower Upper  
 105 100  
 120 47.6 22.8 68.4





#95  
 Naphthalene  
 Concen: 6.798 ug/l  
 RT: 15.504 min Scan# 21  
 Delta R.T. 0.006 min  
 Lab File: VN071103.D  
 Acq: 28 Feb 2022 18:44

Instrument :  
 MSVOA\_N  
 ClientSampleId :  
 MW-38I



Tgt Ion:128 Resp: 43893

Ion	Ratio	Lower	Upper
128	100		
127	12.8	10.5	15.7
129	10.7	8.7	13.1

