

Data Path : Z:\voasrv\HPCHEM1\MSVOA_N\Data\VN022822\
 Data File : VN071089.D
 Acq On : 28 Feb 2022 12:05
 Operator : JC\MD
 Sample : VN0228WBL01
 Misc : 5.0mL/MSVOA_N/WATER
 ALS Vial : 4 Sample Multiplier: 1

Instrument :
 MSVOA_N
 ClientSampleId :
 VN0228WBL01

Integration Parameters: RTEINT.P

Integrator: RTE
 Smoothing : ON Filtering: 5
 Sampling : 1 Min Area: 3 % of largest Peak
 Start Thrs: 0.2 Max Peaks: 100
 Stop Thrs : 0 Peak Location: TOP

If leading or trailing edge < 100 prefer < Baseline drop else tangent >
 Peak separation: 5

Method : Z:\voasrv\HPCHEM1\MSVOA_N\methods\82N021522W.M
 Title : SW846 8260

Signal : TIC: VN071089.D\data.ms

peak #	R.T. min	first scan	max scan	last scan	PK TY	peak height	corr. area	corr. % max.	% of total
1	2.240	38	43	50	rVB2	24072	46057	1.13%	0.231%
2	8.016	1014	1025	1030	rBV	496892	1183310	29.12%	5.933%
3	8.081	1030	1036	1051	rVB	1025360	2297875	56.56%	11.520%
4	8.434	1085	1096	1108	rBV	555650	1309962	32.24%	6.567%
5	8.599	1113	1124	1125	rBV3	15924	43541	1.07%	0.218%
6	8.963	1176	1186	1201	rBV	1452237	2954331	72.71%	14.812%
7	10.440	1427	1437	1457	rBV	2158692	4062929	100.00%	20.369%
8	11.740	1649	1658	1673	rBV	1896329	3362597	82.76%	16.858%
9	12.728	1817	1826	1845	rBV	1424846	2466500	60.71%	12.366%
10	13.669	1979	1986	2000	rVB	1298456	2219078	54.62%	11.125%

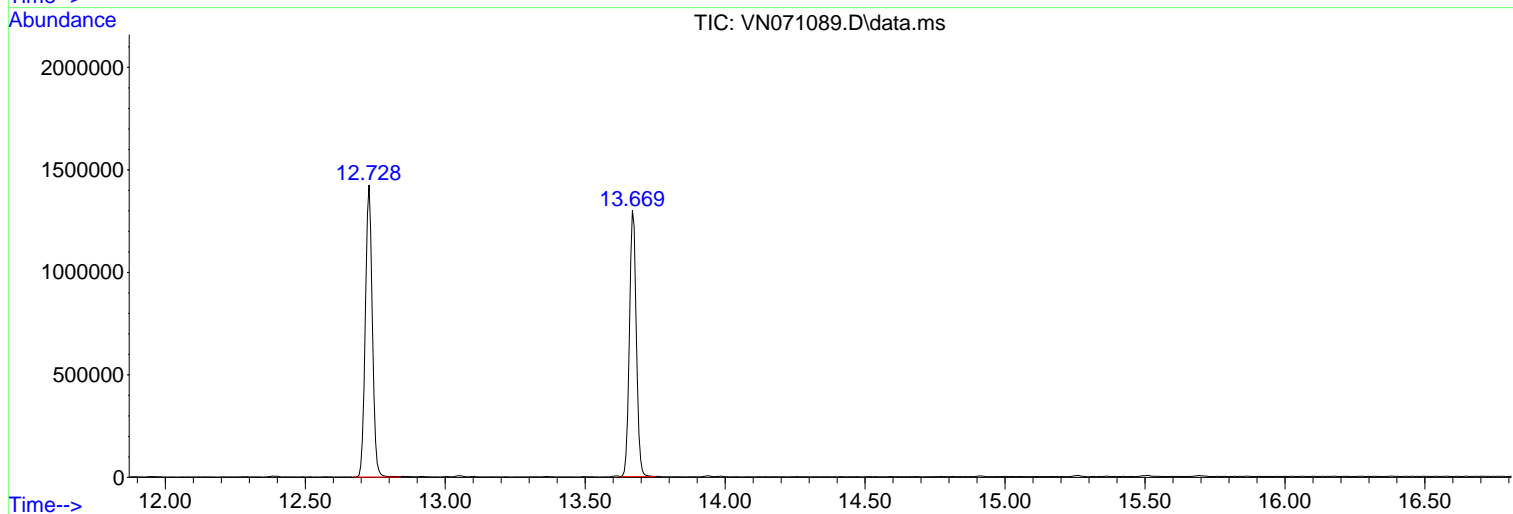
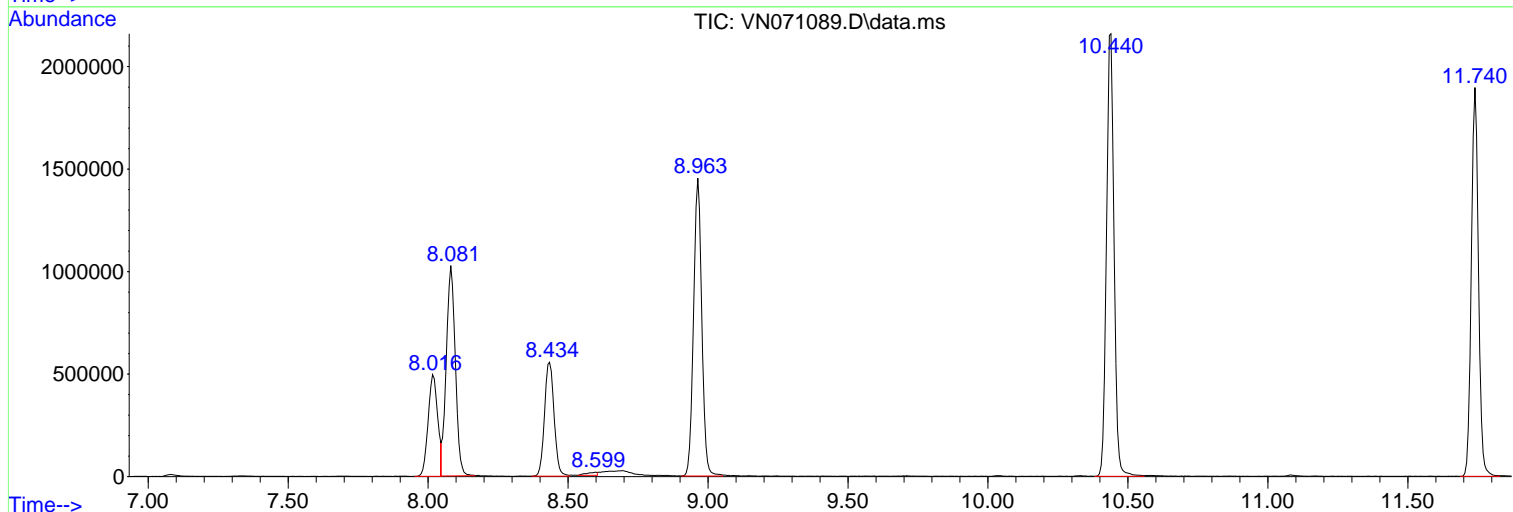
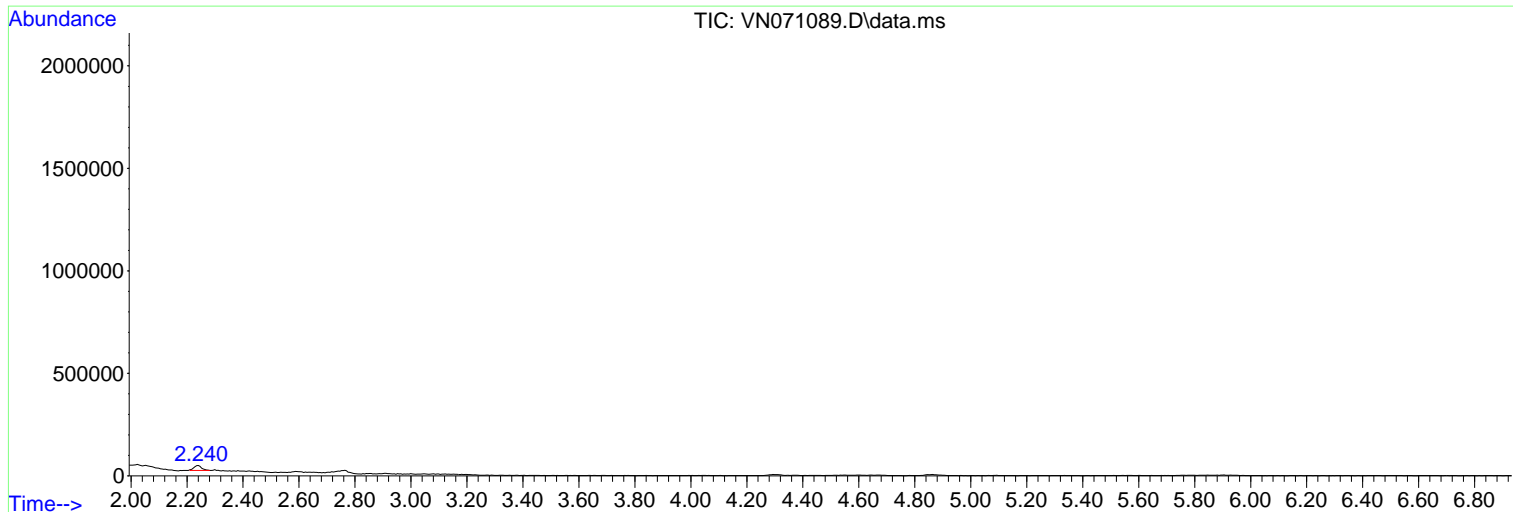
Sum of corrected areas: 19946180

Data Path : Z:\voasrv\HPCHEM1\MSVOA_N\Data\VN022822\
 Data File : VN071089.D
 Acq On : 28 Feb 2022 12:05
 Operator : JC\MD
 Sample : VN0228WBL01
 Misc : 5.0mL/MSVOA_N/WATER
 ALS Vial : 4 Sample Multiplier: 1

Instrument :
 MSVOA_N
 ClientSampleId :
 VN0228WBL01

Quant Method : Z:\voasrv\HPCHEM1\MSVOA_N\methods\82N021522W.M
 Quant Title : SW846 8260

TIC Library : C:\Database\NIST20.L
 TIC Integration Parameters: LSCINT.P



Library Search Compound Report

Data Path : Z:\voasrv\HPCHEM1\MSVOA_N\Data\VN022822\
Data File : VN071089.D
Acq On : 28 Feb 2022 12:05
Operator : JC\MD
Sample : VN0228WBL01
Misc : 5.0mL/MSVOA_N/WATER
ALS Vial : 4 Sample Multiplier: 1

Instrument :
MSVOA_N
ClientSampleId :
VN0228WBL01

Quant Method : Z:\voasrv\HPCHEM1\MSVOA_N\methods\82N021522W.M
Quant Title : SW846 8260

TIC Library : C:\Database\NIST20.L
TIC Integration Parameters: LSCINT.P

No Library Search Compounds Detected

Data Path : Z:\voasrv\HPCHEM1\MSVOA_N\Data\VN022822\
Data File : VN071089.D
Acq On : 28 Feb 2022 12:05
Operator : JC\MD
Sample : VN0228WBL01
Misc : 5.0mL/MSVOA_N/WATER
ALS Vial : 4 Sample Multiplier: 1

Instrument :
MSVOA_N
ClientSampleId :
VN0228WBL01

Quant Method : Z:\voasrv\HPCHEM1\MSVOA_N\methods\82N021522W.M
Quant Title : SW846 8260

TIC Library : C:\Database\NIST20.L
TIC Integration Parameters: LSCINT.P

TIC Top Hit name	RT	EstConc	Units	Response	--Internal Standard--			
					#	RT	Resp	Conc
