

Data Path : Z:\voasrv\HPCHEM1\MSVOA_N\Data\VN030422\
 Data File : VN071165.D
 Acq On : 04 Mar 2022 12:52
 Operator : JC\MD
 Sample : N1776-01
 Misc : 5.0mL/MSVOA_N/WATER
 ALS Vial : 7 Sample Multiplier: 1

Instrument :
 MSVOA_N
 ClientSampleId :

Quant Time: Mar 04 22:16:02 2022
 Quant Method : Z:\voasrv\HPCHEM1\MSVOA_N\methods\82N021522W.M
 Quant Title : SW846 8260
 QLast Update : Mon Feb 21 07:57:15 2022
 Response via : Initial Calibration

Compound	R.T.	QIon	Response	Conc	Units	Dev(Min)

Internal Standards						
1) Pentafluorobenzene	8.080	168	754553	50.000	ug/l	0.00
34) 1,4-Difluorobenzene	8.963	114	1223482	50.000	ug/l	0.00
63) Chlorobenzene-d5	11.739	117	1075532	50.000	ug/l	0.00
72) 1,4-Dichlorobenzene-d4	13.668	152	356193	50.000	ug/l	0.00
System Monitoring Compounds						
33) 1,2-Dichloroethane-d4	8.433	65	470563	54.594	ug/l	0.00
Spiked Amount	50.000	Range 61 - 141	Recovery	=	109.180%	
35) Dibromofluoromethane	8.016	113	359692	49.427	ug/l	0.00
Spiked Amount	50.000	Range 69 - 133	Recovery	=	98.860%	
50) Toluene-d8	10.433	98	1481587	50.696	ug/l	0.00
Spiked Amount	50.000	Range 65 - 126	Recovery	=	101.400%	
62) 4-Bromofluorobenzene	12.727	95	504575	48.302	ug/l	0.00
Spiked Amount	50.000	Range 58 - 135	Recovery	=	96.600%	
Target Compounds						
						Qvalue
3) Chloromethane	2.304	50	2570	0.261	ug/l	99
5) Bromomethane	2.869	94	1291	0.230	ug/l #	74
10) Methyl Iodide	4.439	142	2273	0.216	ug/l #	70
11) Tert butyl alcohol	5.357	59	25027	15.932	ug/l	95
13) Acrolein	4.034	56	494	0.352	ug/l #	1
15) Acrylonitrile	5.563	53	1494	0.323	ug/l #	20
16) Acetone	4.292	43	10683	2.251	ug/l	94
18) Methyl Acetate	4.857	43	4306	Below Cal	#	82
25) 2-Butanone	7.339	43	5890	0.933	ug/l #	84
29) Tetrahydrofuran	7.698	42	1445	0.353	ug/l #	67
31) Cyclohexane	8.086	56	16590	1.113	ug/l #	18
36) 1,1-Dichloropropene	8.086	75	58448	4.902	ug/l #	49
38) Carbon Tetrachloride	8.080	117	71703	6.104	ug/l #	16
43) Isopropyl Acetate	8.575	43	5631	0.279	ug/l #	55
49) 1,4-Dioxane	9.569	88	372	2.195	ug/l #	47
51) 4-Methyl-2-Pentanone	10.327	43	6780	0.553	ug/l	100
59) 2-Hexanone	11.080	43	12901	1.530	ug/l	95
68) m/p-Xylenes	11.951	106	3380	0.216	ug/l	94
74) N-amyl acetate	12.392	43	8109	0.885	ug/l #	94
76) 1,2,3-Trichloropropane	12.727	75	255598	30.477	ug/l #	1
77) Bromobenzene	12.857	156	1643	0.234	ug/l	72
78) n-propylbenzene	12.915	91	7103	0.221	ug/l	92
81) trans-1,4-Dichloro-2-b...	12.727	75	255598	98.759	ug/l #	5
82) 4-Chlorotoluene	13.098	91	5535	0.291	ug/l	95
84) 1,2,4-Trimethylbenzene	13.362	105	6307	0.276	ug/l	99
86) p-Isopropyltoluene	13.615	119	4771	0.200	ug/l	97
87) 1,3-Dichlorobenzene	13.615	146	4412	0.355	ug/l	96
88) 1,4-Dichlorobenzene	13.615	146	4412	0.362	ug/l	97
89) n-Butylbenzene	13.939	91	10025	0.516	ug/l	92
91) 1,2-Dichlorobenzene	13.986	146	5158	0.442	ug/l	92
92) 1,2-Dibromo-3-Chloropr...	14.598	75	1045	0.708	ug/l	66
93) 1,2,4-Trichlorobenzene	15.256	180	5387	2.788	ug/l	95
94) Hexachlorobutadiene	15.356	225	1181	0.278	ug/l	97
95) Naphthalene	15.503	128	15408	5.861	ug/l #	96
96) 1,2,3-Trichlorobenzene	15.698	180	6292	3.504	ug/l	96

Data Path : Z:\voasrv\HPCHEM1\MSVOA_N\Data\VN030422\
Data File : VN071165.D
Acq On : 04 Mar 2022 12:52
Operator : JC\MD
Sample : N1776-01
Misc : 5.0mL/MSVOA_N/WATER
ALS Vial : 7 Sample Multiplier: 1

Instrument :
MSVOA_N
ClientSampleId :

Quant Time: Mar 04 22:16:02 2022
Quant Method : Z:\voasrv\HPCHEM1\MSVOA_N\methods\82N021522W.M
Quant Title : SW846 8260
QLast Update : Mon Feb 21 07:57:15 2022
Response via : Initial Calibration

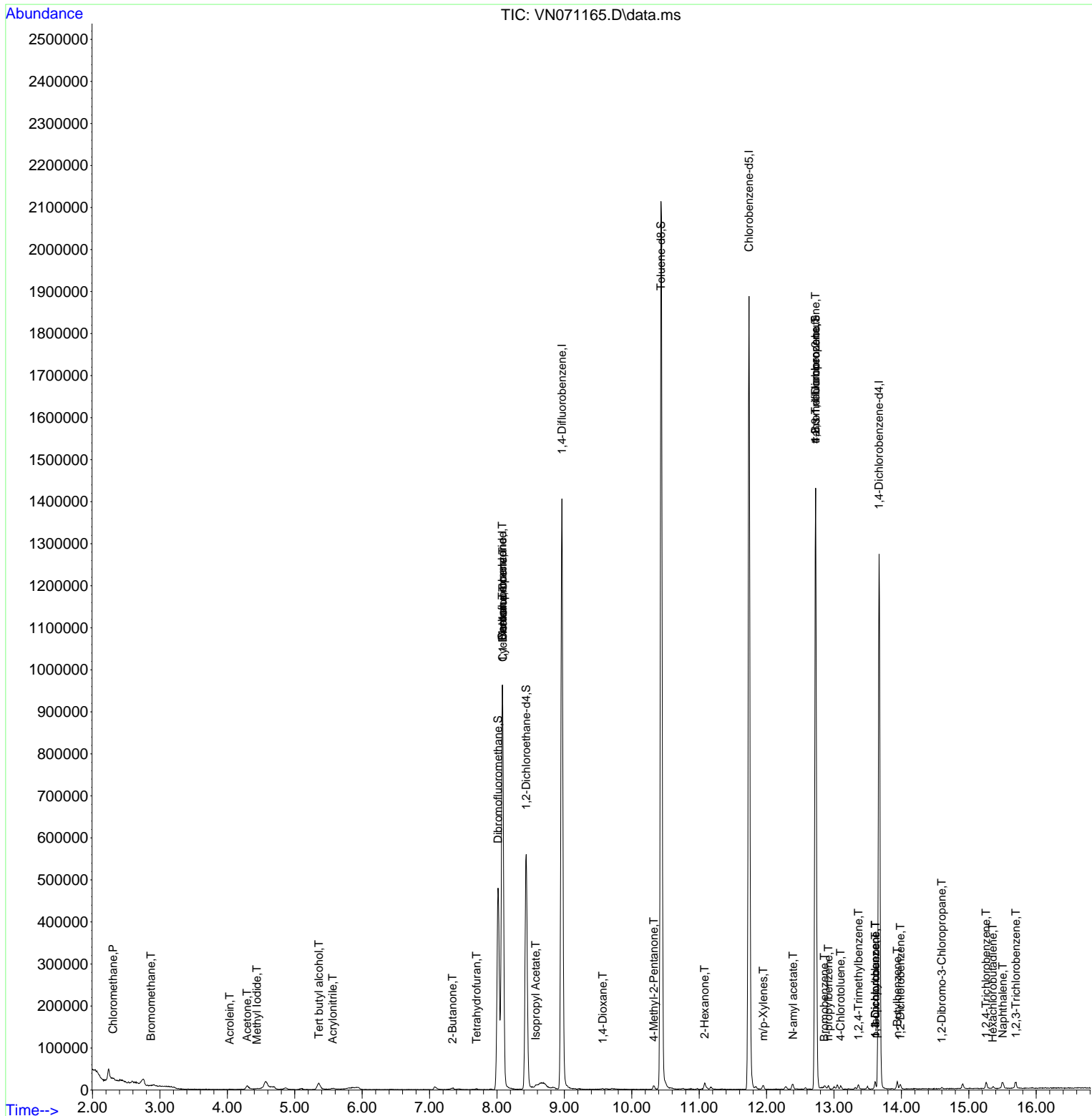
Compound	R.T.	QIon	Response	Conc	Units	Dev(Min)
----------	------	------	----------	------	-------	----------

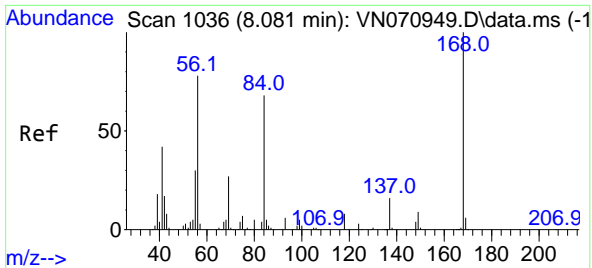
(#) = qualifier out of range (m) = manual integration (+) = signals summed

Data Path : Z:\voasrv\HPCHEM1\MSVOA_N\Data\VN030422\
 Data File : VN071165.D
 Acq On : 04 Mar 2022 12:52
 Operator : JC\MD
 Sample : N1776-01
 Misc : 5.0mL/MSVOA_N/WATER
 ALS Vial : 7 Sample Multiplier: 1

Instrument :
 MSVOA_N
 ClientSampleId :

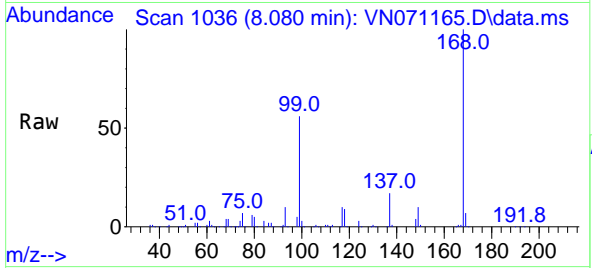
Quant Time: Mar 04 22:16:02 2022
 Quant Method : Z:\voasrv\HPCHEM1\MSVOA_N\methods\82N021522W.M
 Quant Title : SW846 8260
 QLast Update : Mon Feb 21 07:57:15 2022
 Response via : Initial Calibration



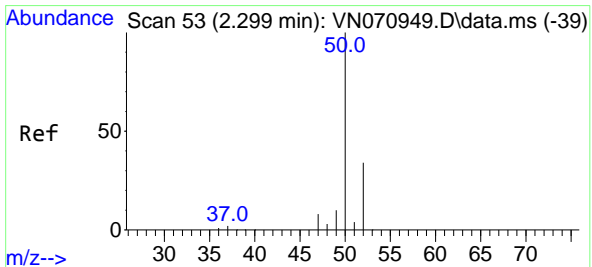
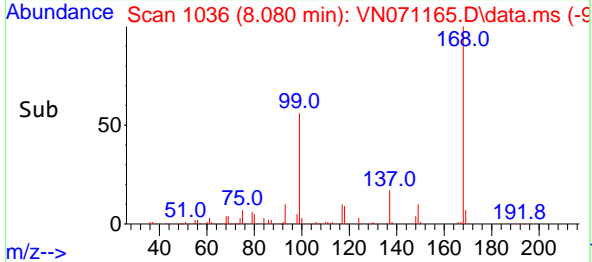
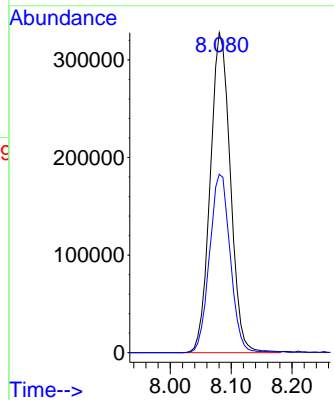


#1
 Pentafluorobenzene
 Concen: 50.000 ug/l
 RT: 8.080 min Scan# 10
 Delta R.T. -0.001 min
 Lab File: VN071165.D
 Acq: 04 Mar 2022 12:52

Instrument :
 MSVOA_N
 ClientSampleId :

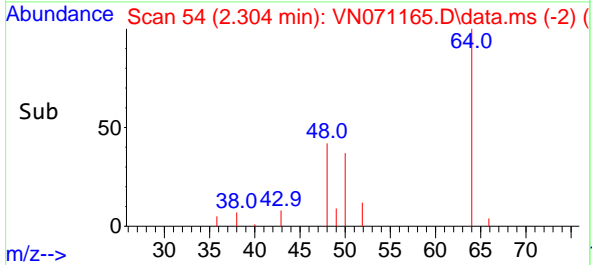
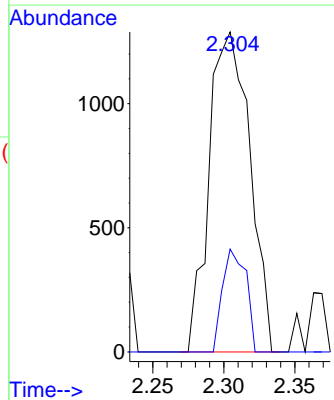
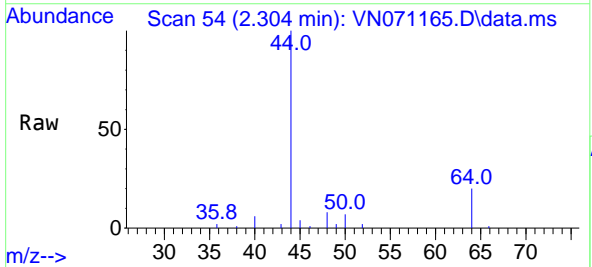


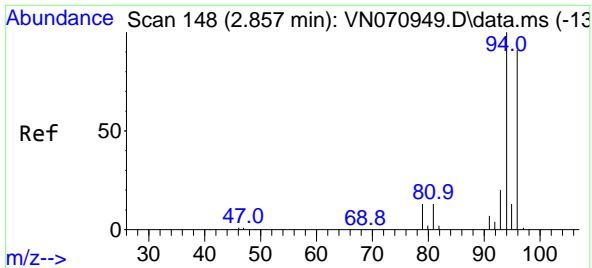
Tgt Ion:168 Resp: 754553
 Ion Ratio Lower Upper
 168 100
 99 55.8 41.3 61.9



#3
 Chloromethane
 Concen: 0.261 ug/l
 RT: 2.304 min Scan# 54
 Delta R.T. 0.006 min
 Lab File: VN071165.D
 Acq: 04 Mar 2022 12:52

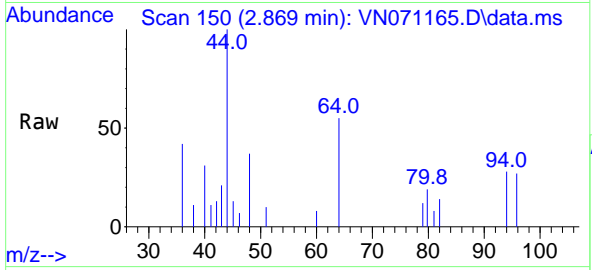
Tgt Ion: 50 Resp: 2570
 Ion Ratio Lower Upper
 50 100
 52 32.1 25.4 38.0



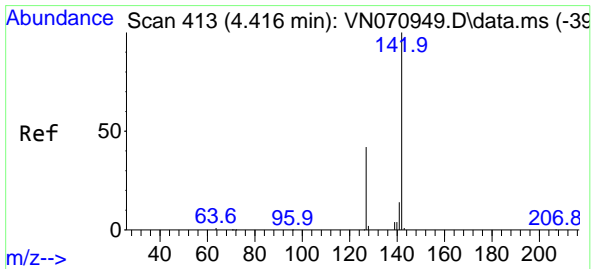
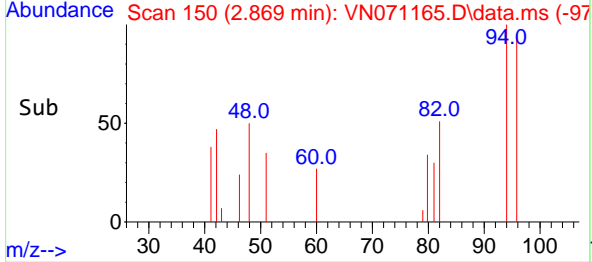
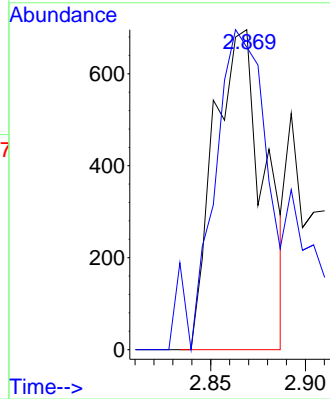


#5
 Bromomethane
 Concen: 0.230 ug/l
 RT: 2.869 min Scan# 11
 Delta R.T. 0.012 min
 Lab File: VN071165.D
 Acq: 04 Mar 2022 12:52

Instrument :
 MSVOA_N
 ClientSampleId :

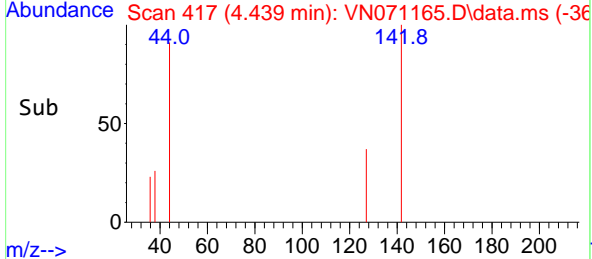
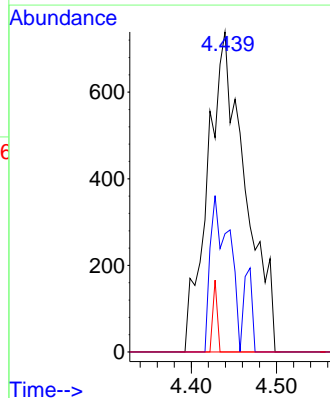
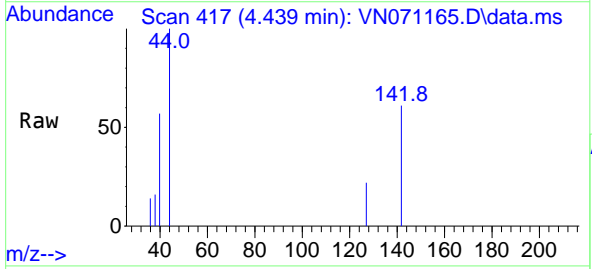


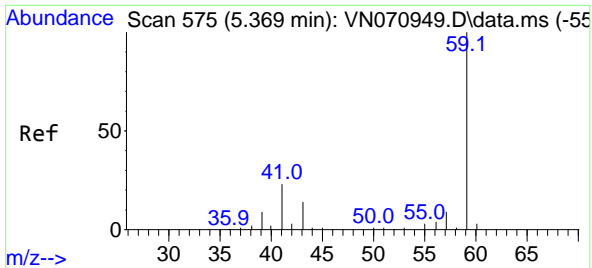
Tgt Ion: 94 Resp: 1291
 Ion Ratio Lower Upper
 94 100
 96 67.4 73.8 110.8#



#10
 Methyl Iodide
 Concen: 0.216 ug/l
 RT: 4.439 min Scan# 417
 Delta R.T. 0.023 min
 Lab File: VN071165.D
 Acq: 04 Mar 2022 12:52

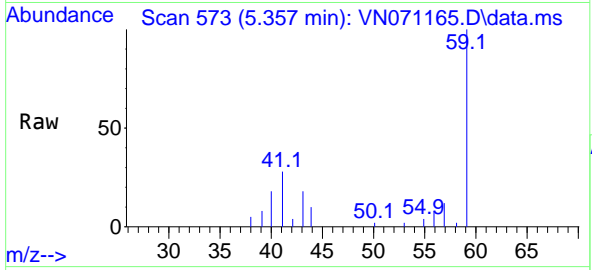
Tgt Ion: 142 Resp: 2273
 Ion Ratio Lower Upper
 142 100
 127 24.5 35.4 53.0#
 141 2.6 11.6 17.4#



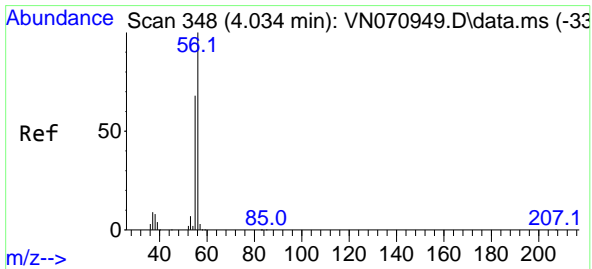
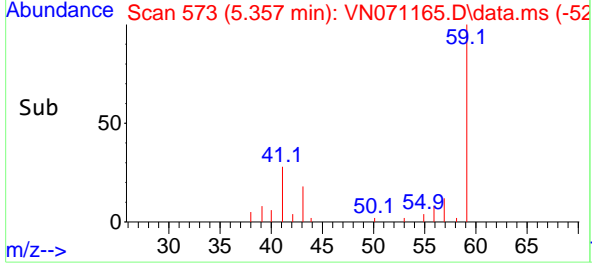
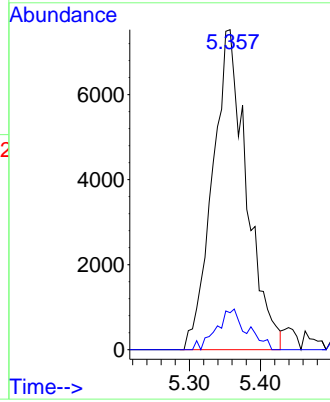


#11
 Tert butyl alcohol
 Concen: 15.932 ug/l
 RT: 5.357 min Scan# 51
 Delta R.T. -0.012 min
 Lab File: VN071165.D
 Acq: 04 Mar 2022 12:52

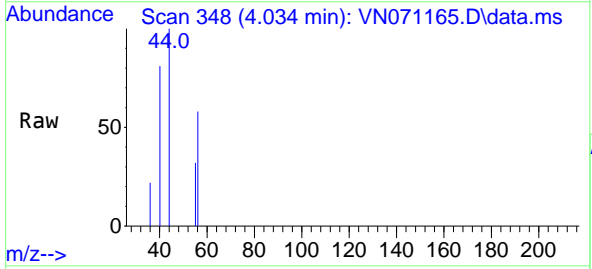
Instrument :
 MSVOA_N
 ClientSampleId :



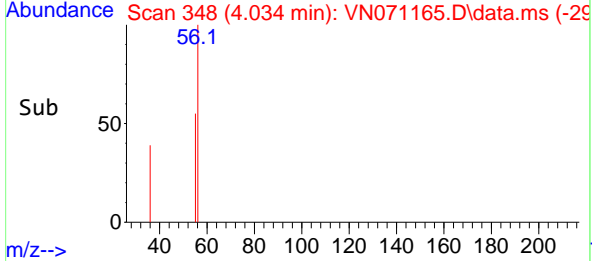
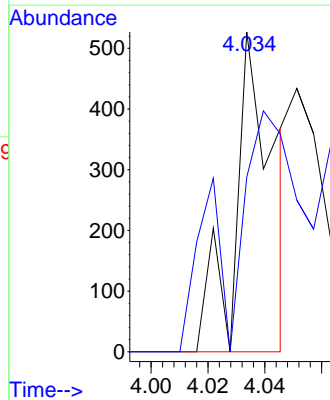
Tgt Ion: 59 Resp: 25027
 Ion Ratio Lower Upper
 59 100
 57 9.2 8.7 13.1

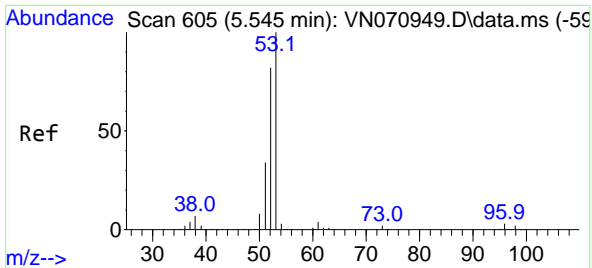


#13
 Acrolein
 Concen: 0.352 ug/l
 RT: 4.034 min Scan# 348
 Delta R.T. -0.000 min
 Lab File: VN071165.D
 Acq: 04 Mar 2022 12:52



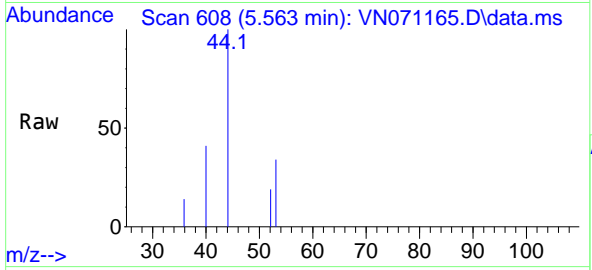
Tgt Ion: 56 Resp: 494
 Ion Ratio Lower Upper
 56 100
 55 163.2 56.6 85.0#





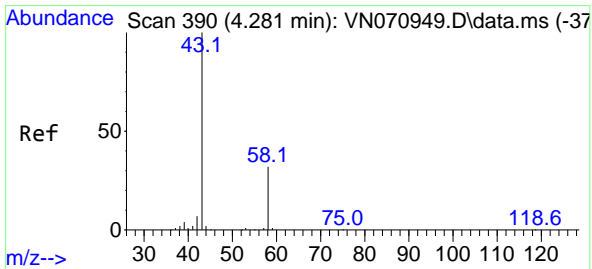
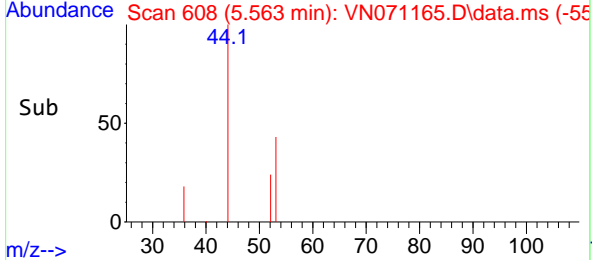
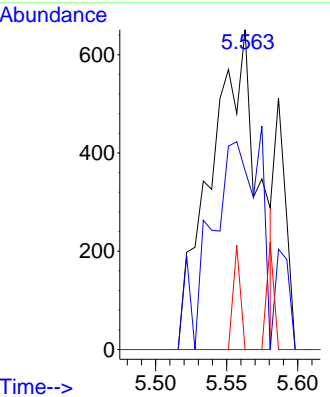
#15
 Acrylonitrile
 Concen: 0.323 ug/l
 RT: 5.563 min Scan# 605
 Delta R.T. 0.018 min
 Lab File: VN071165.D
 Acq: 04 Mar 2022 12:52

Instrument : MSVOA_N
 ClientSampleId :



Tgt Ion: 53 Resp: 1494

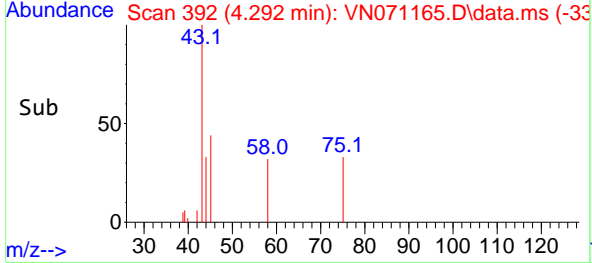
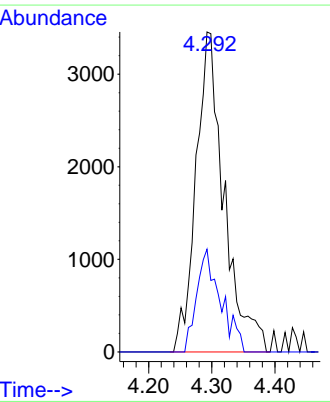
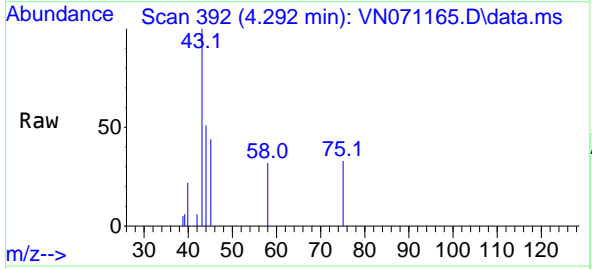
Ion	Ratio	Lower	Upper
53	100		
52	0.0	66.2	99.2#
51	5.0	29.6	44.4#

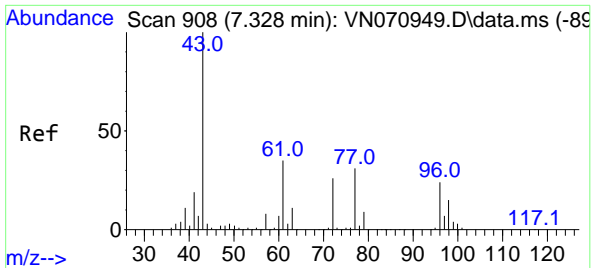


#16
 Acetone
 Concen: 2.251 ug/l
 RT: 4.292 min Scan# 392
 Delta R.T. 0.012 min
 Lab File: VN071165.D
 Acq: 04 Mar 2022 12:52

Tgt Ion: 43 Resp: 10683

Ion	Ratio	Lower	Upper
43	100		
58	32.1	23.1	34.7



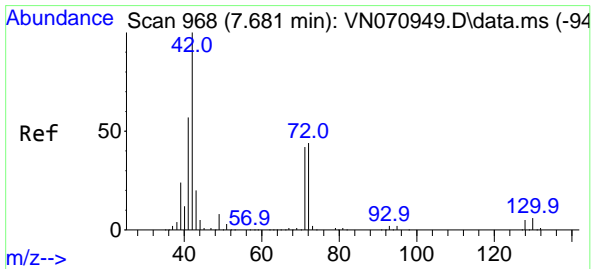
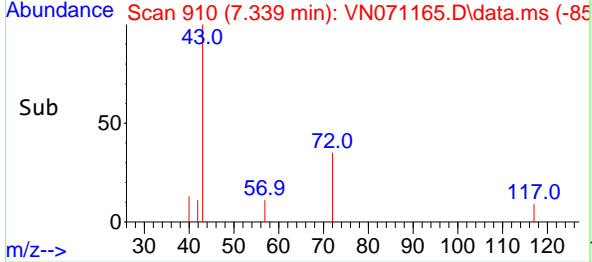
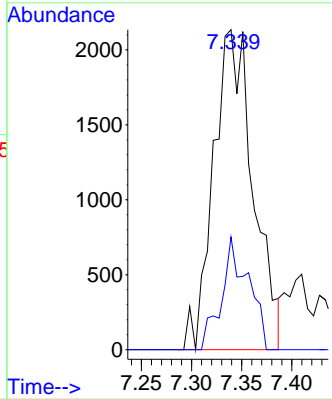
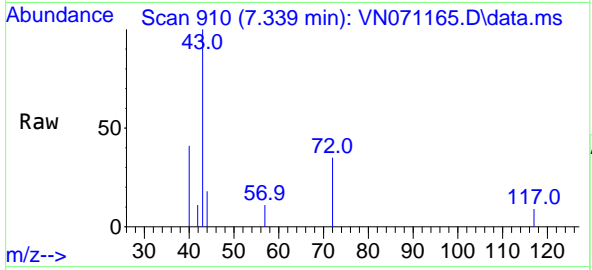


#25
 2-Butanone
 Concen: 0.933 ug/l
 RT: 7.339 min Scan# 910
 Delta R.T. 0.012 min
 Lab File: VN071165.D
 Acq: 04 Mar 2022 12:52

Instrument : MSVOA_N
 ClientSampleId :

Tgt Ion: 43 Resp: 5890

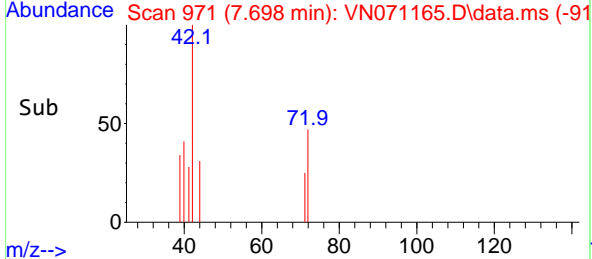
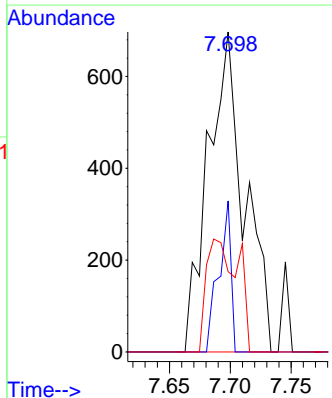
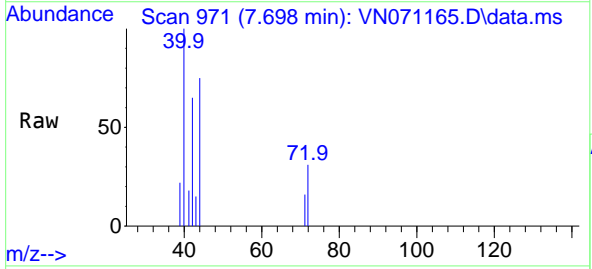
Ion	Ratio	Lower	Upper
43	100		
72	35.2	21.7	32.5#

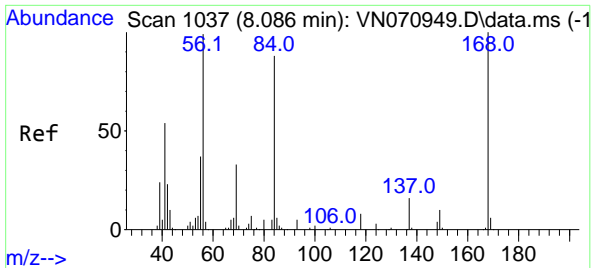


#29
 Tetrahydrofuran
 Concen: 0.353 ug/l
 RT: 7.698 min Scan# 971
 Delta R.T. 0.018 min
 Lab File: VN071165.D
 Acq: 04 Mar 2022 12:52

Tgt Ion: 42 Resp: 1445

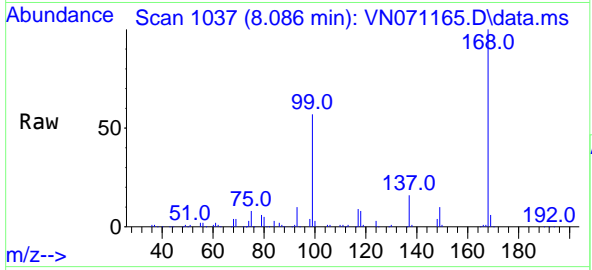
Ion	Ratio	Lower	Upper
42	100		
72	15.8	36.3	54.5#
71	30.4	34.7	52.1#



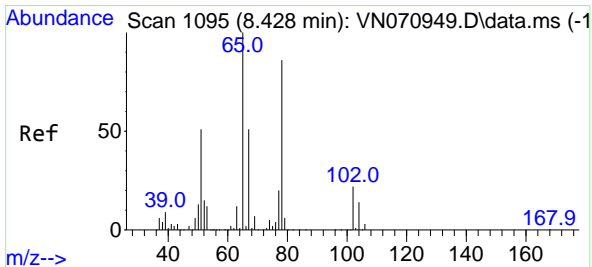
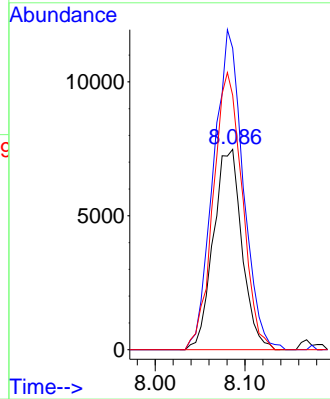
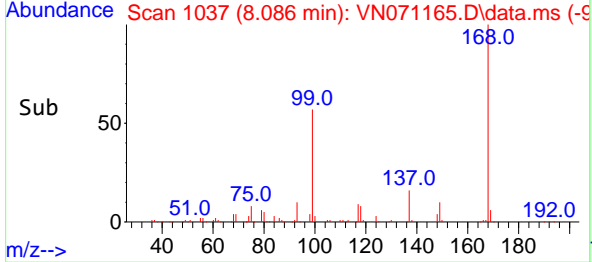


#31
 Cyclohexane
 Concen: 1.113 ug/l
 RT: 8.086 min Scan# 1037
 Delta R.T. -0.000 min
 Lab File: VN071165.D
 Acq: 04 Mar 2022 12:52

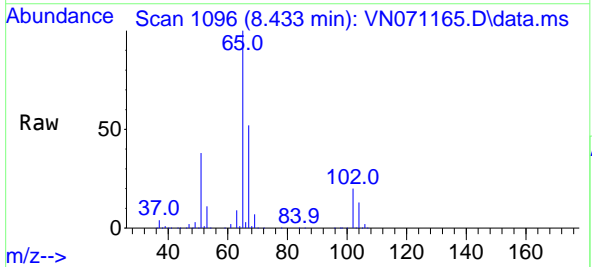
Instrument : MSVOA_N
 ClientSampleId :



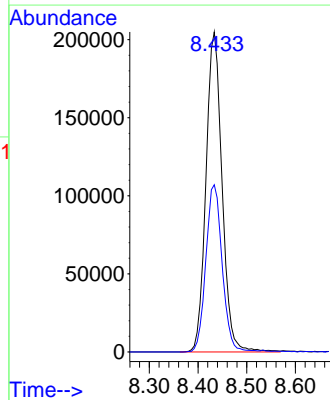
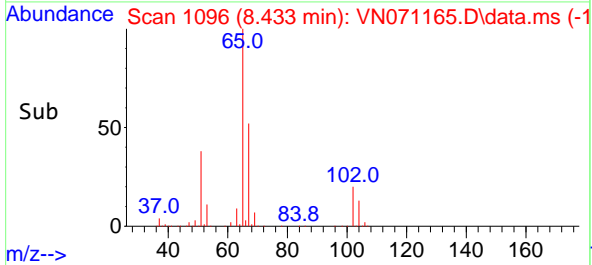
Tgt Ion: 56 Resp: 16590
 Ion Ratio Lower Upper
 56 100
 69 150.4 27.1 40.7#
 84 127.0 73.4 110.0#

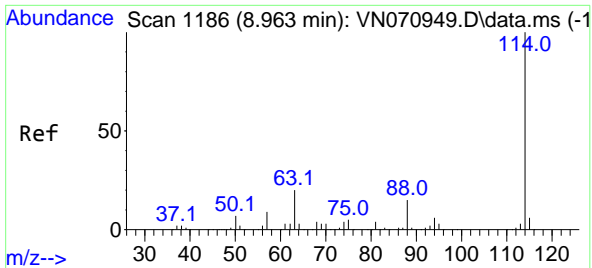


#33
 1,2-Dichloroethane-d4
 Concen: 54.594 ug/l
 RT: 8.433 min Scan# 1096
 Delta R.T. 0.006 min
 Lab File: VN071165.D
 Acq: 04 Mar 2022 12:52



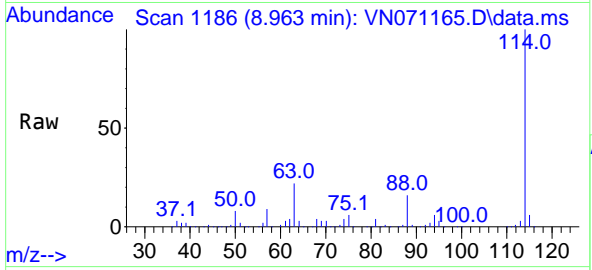
Tgt Ion: 65 Resp: 470563
 Ion Ratio Lower Upper
 65 100
 67 52.8 0.0 103.0



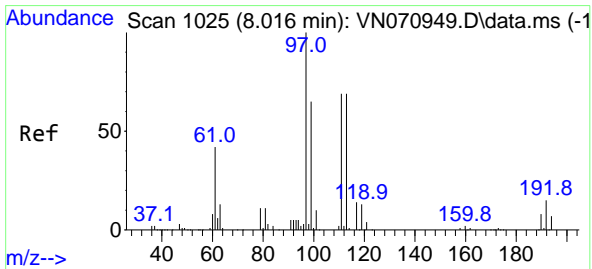
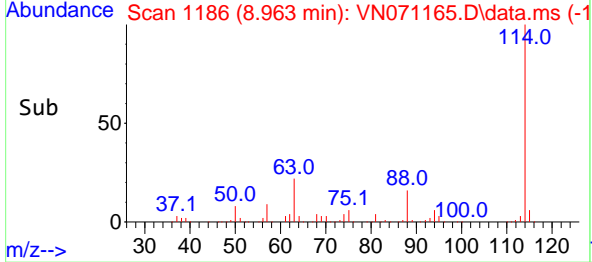
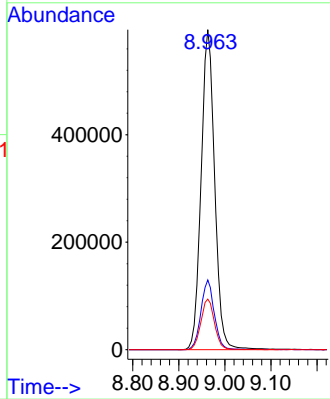


#34
 1,4-Difluorobenzene
 Concen: 50.000 ug/l
 RT: 8.963 min Scan# 1186
 Delta R.T. -0.000 min
 Lab File: VN071165.D
 Acq: 04 Mar 2022 12:52

Instrument : MSVOA_N
 ClientSampleId :

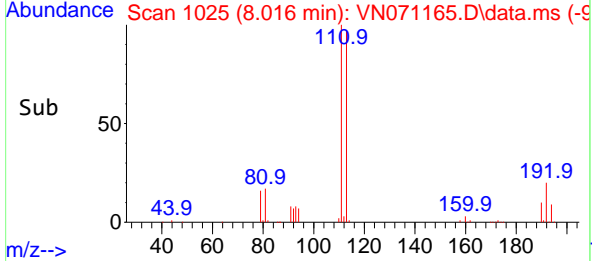
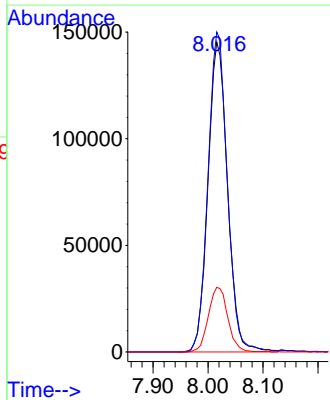
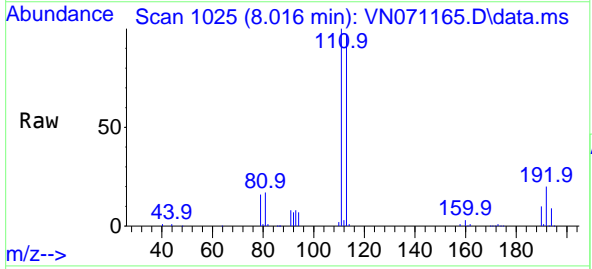


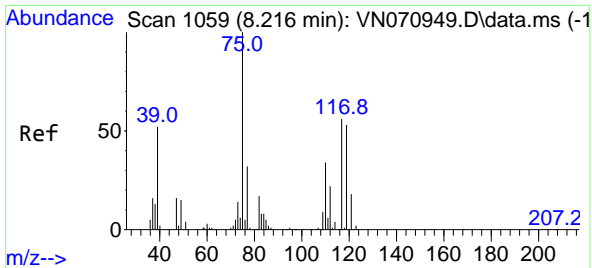
Tgt Ion:114 Resp: 1223482
 Ion Ratio Lower Upper
 114 100
 63 21.8 0.0 37.8
 88 15.8 0.0 27.4



#35
 Dibromofluoromethane
 Concen: 49.427 ug/l
 RT: 8.016 min Scan# 1025
 Delta R.T. -0.000 min
 Lab File: VN071165.D
 Acq: 04 Mar 2022 12:52

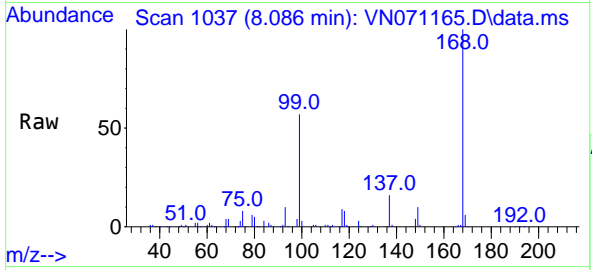
Tgt Ion:113 Resp: 359692
 Ion Ratio Lower Upper
 113 100
 111 102.2 82.2 123.2
 192 20.7 16.9 25.3



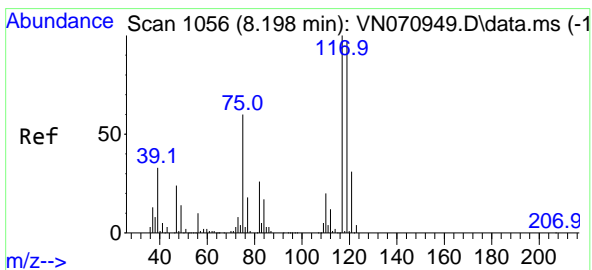
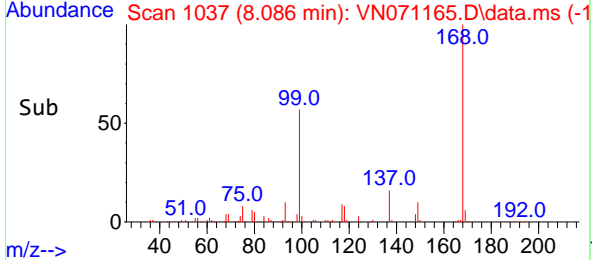
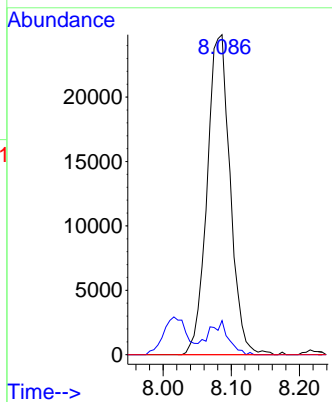


#36
 1,1-Dichloropropene
 Concen: 4.902 ug/l
 RT: 8.086 min Scan# 1037
 Delta R.T. -0.130 min
 Lab File: VN071165.D
 Acq: 04 Mar 2022 12:52

Instrument : MSVOA_N
 ClientSampleId :

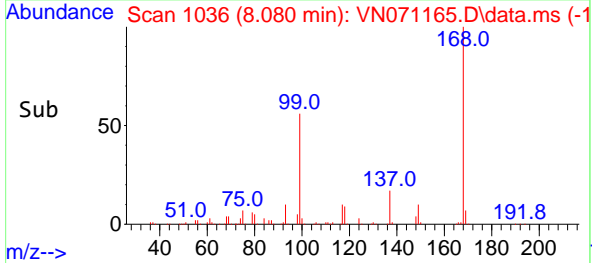
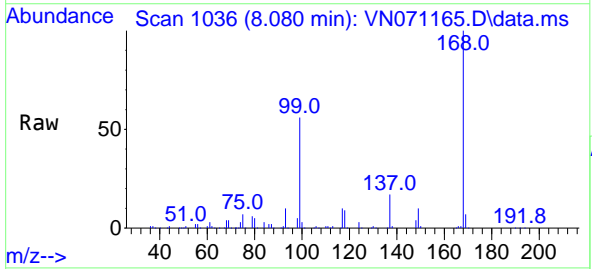
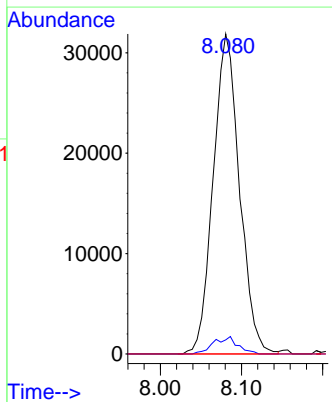


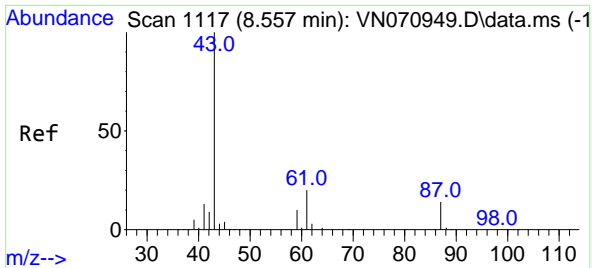
Tgt Ion: 75 Resp: 58448
 Ion Ratio Lower Upper
 75 100
 110 9.2 18.4 55.2#
 77 0.0 24.4 36.6#



#38
 Carbon Tetrachloride
 Concen: 6.104 ug/l
 RT: 8.080 min Scan# 1036
 Delta R.T. -0.118 min
 Lab File: VN071165.D
 Acq: 04 Mar 2022 12:52

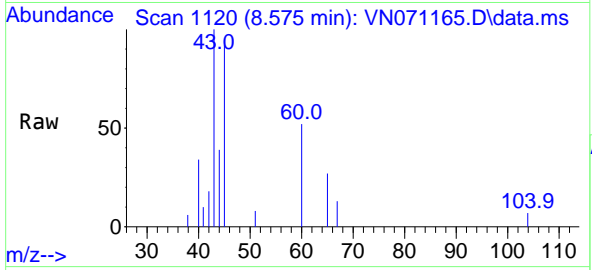
Tgt Ion: 117 Resp: 71703
 Ion Ratio Lower Upper
 117 100
 119 4.4 76.1 114.1#
 121 0.0 24.2 36.2#





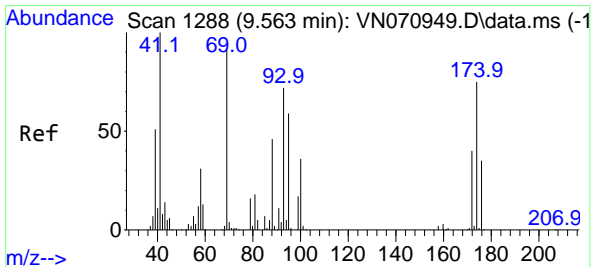
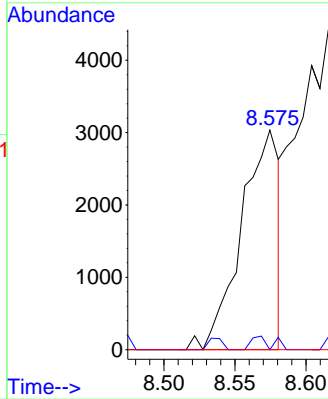
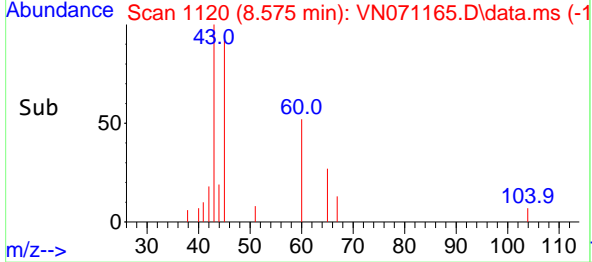
#43
 Isopropyl Acetate
 Concen: 0.279 ug/l
 RT: 8.575 min Scan# 1117
 Delta R.T. 0.018 min
 Lab File: VN071165.D
 Acq: 04 Mar 2022 12:52

Instrument :
 MSVOA_N
 ClientSampleId :

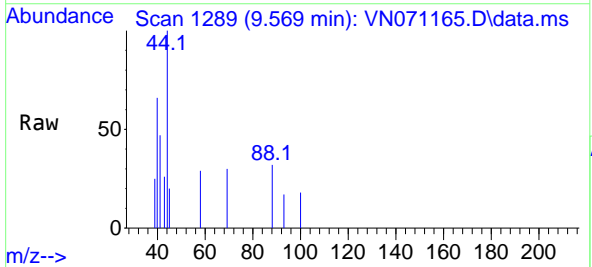


Tgt Ion: 43 Resp: 5631

Ion	Ratio	Lower	Upper
43	100		
61	0.0	20.4	30.6#
87	0.0	11.2	16.8#

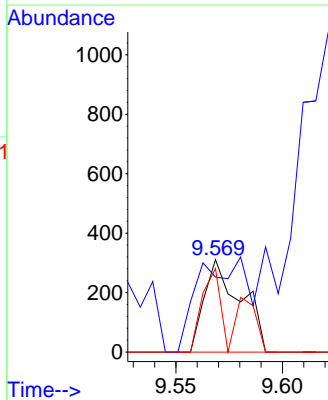
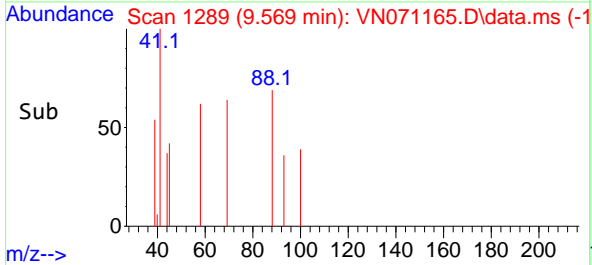


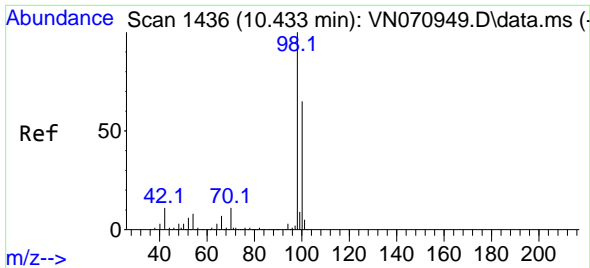
#49
 1,4-Dioxane
 Concen: 2.195 ug/l
 RT: 9.569 min Scan# 1289
 Delta R.T. 0.006 min
 Lab File: VN071165.D
 Acq: 04 Mar 2022 12:52



Tgt Ion: 88 Resp: 372

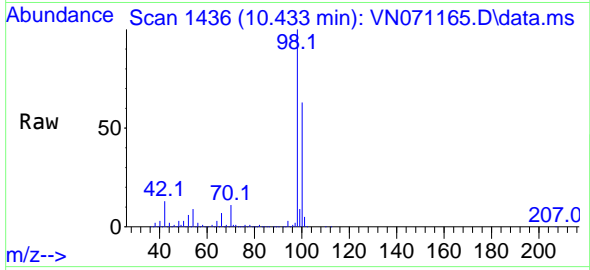
Ion	Ratio	Lower	Upper
88	100		
43	91.9	23.4	35.2#
58	45.4	50.6	75.8#



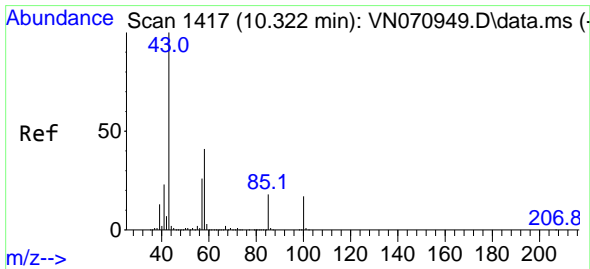
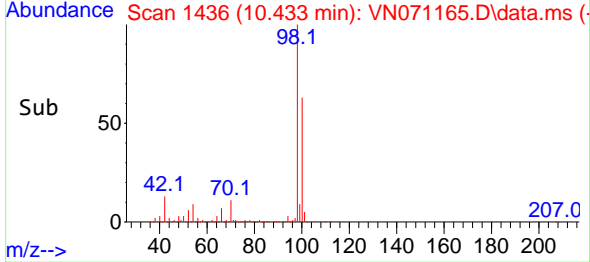
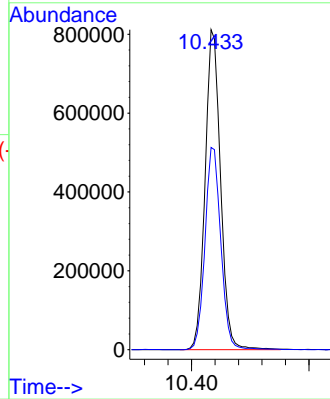


#50
 Toluene-d8
 Concen: 50.696 ug/l
 RT: 10.433 min Scan# 1436
 Delta R.T. -0.000 min
 Lab File: VN071165.D
 Acq: 04 Mar 2022 12:52

Instrument : MSVOA_N
 ClientSampled :

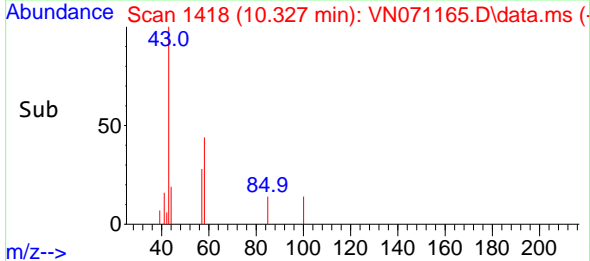
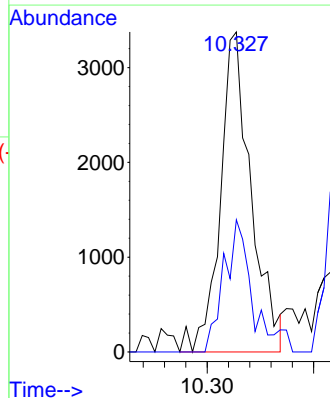
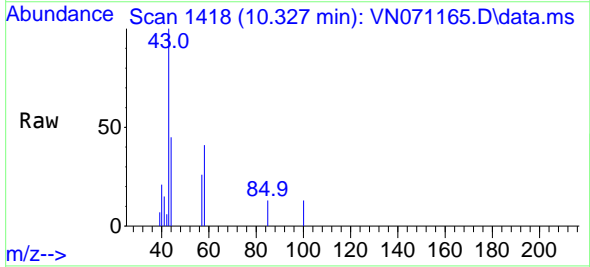


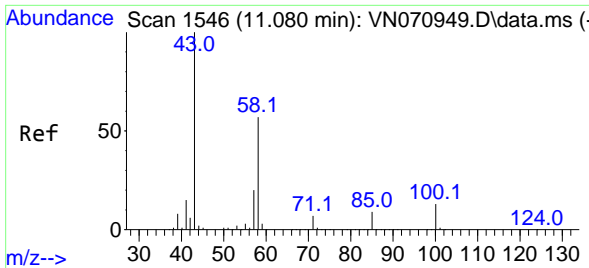
Tgt Ion: 98 Resp: 1481587
 Ion Ratio Lower Upper
 98 100
 100 64.8 50.4 75.6



#51
 4-Methyl-2-Pentanone
 Concen: 0.553 ug/l
 RT: 10.327 min Scan# 1418
 Delta R.T. 0.006 min
 Lab File: VN071165.D
 Acq: 04 Mar 2022 12:52

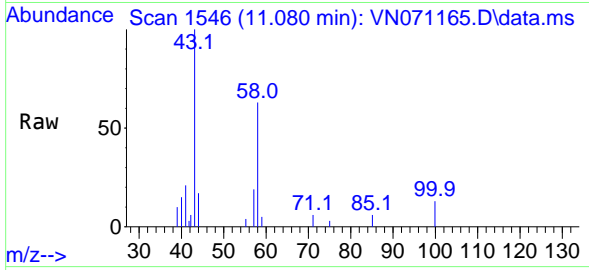
Tgt Ion: 43 Resp: 6780
 Ion Ratio Lower Upper
 43 100
 58 38.2 30.4 45.6



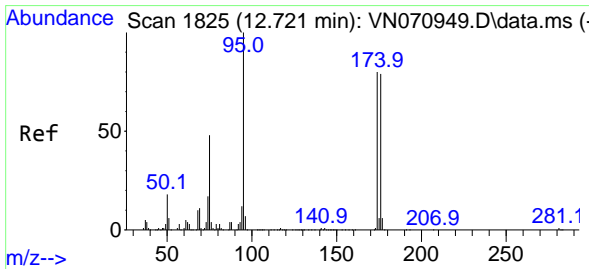
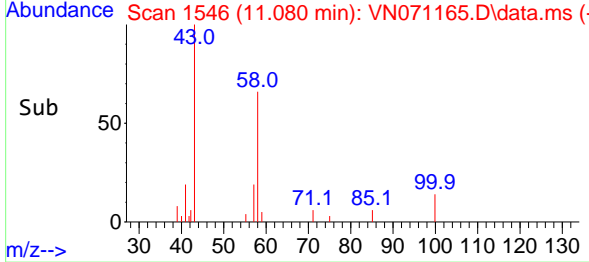
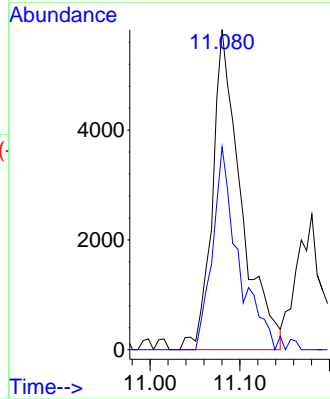


#59
 2-Hexanone
 Concen: 1.530 ug/l
 RT: 11.080 min Scan# 11
 Delta R.T. 0.000 min
 Lab File: VN071165.D
 Acq: 04 Mar 2022 12:52

Instrument :
 MSVOA_N
 ClientSampleId :

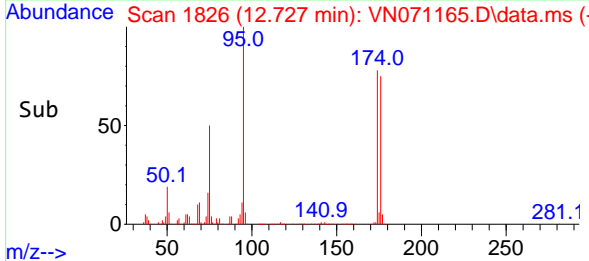
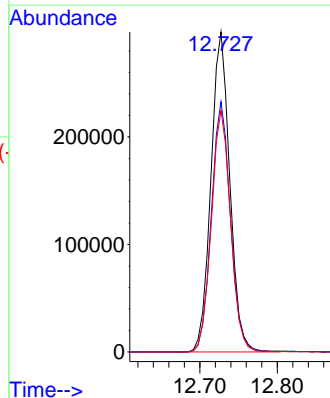
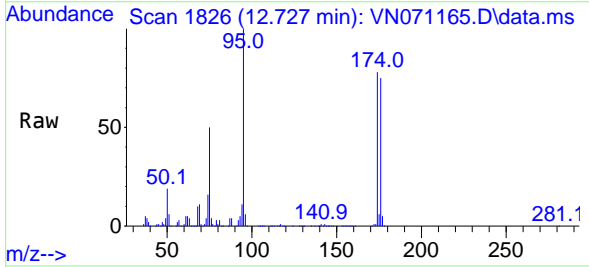


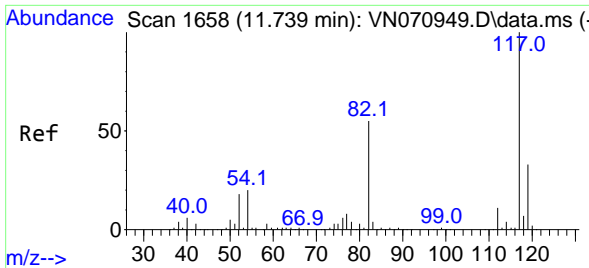
Tgt Ion: 43 Resp: 12901
 Ion Ratio Lower Upper
 43 100
 58 57.4 26.9 80.7



#62
 4-Bromofluorobenzene
 Concen: 48.302 ug/l
 RT: 12.727 min Scan# 1826
 Delta R.T. 0.006 min
 Lab File: VN071165.D
 Acq: 04 Mar 2022 12:52

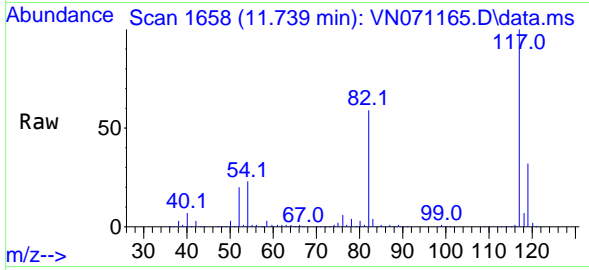
Tgt Ion: 95 Resp: 504575
 Ion Ratio Lower Upper
 95 100
 174 79.4 0.0 187.2
 176 76.6 0.0 181.4



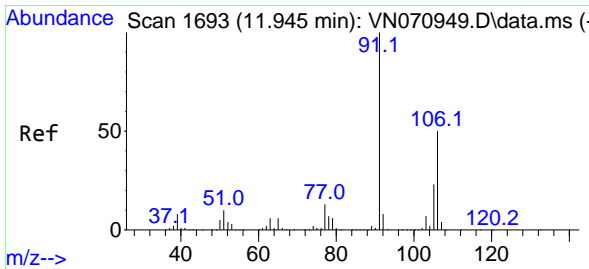
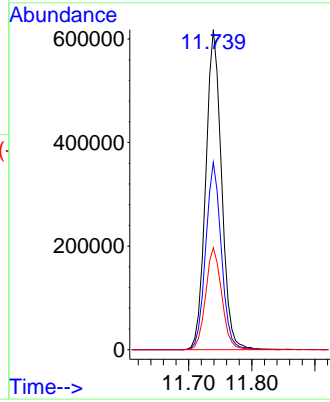
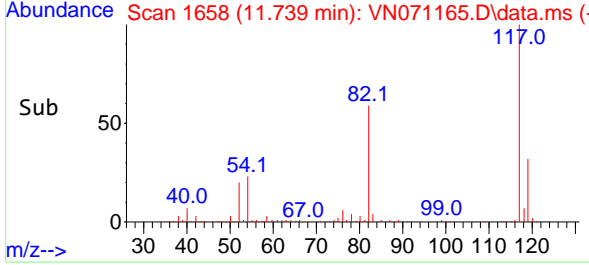


#63
 Chlorobenzene-d5
 Concen: 50.000 ug/l
 RT: 11.739 min Scan# 1170
 Delta R.T. -0.000 min
 Lab File: VN071165.D
 Acq: 04 Mar 2022 12:52

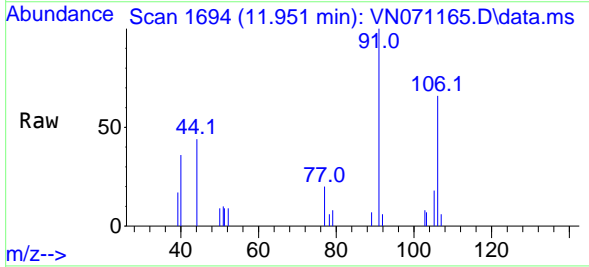
Instrument :
 MSVOA_N
 ClientSampleId :



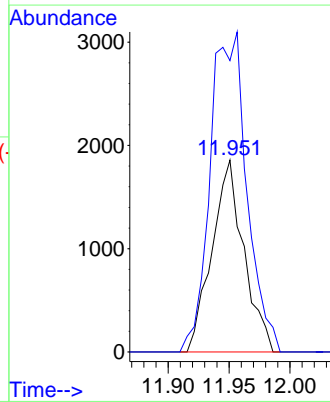
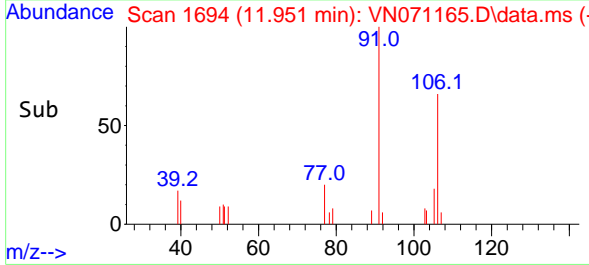
Tgt Ion:117 Resp: 1075532
 Ion Ratio Lower Upper
 117 100
 82 58.6 42.4 63.6
 119 31.8 25.4 38.2

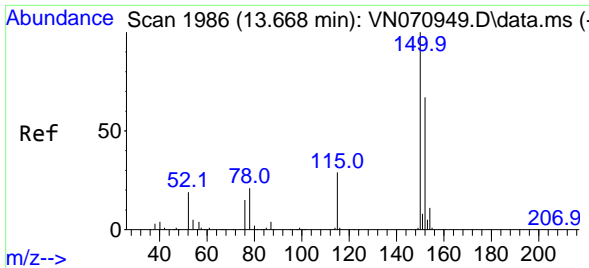


#68
 m/p-Xylenes
 Concen: 0.216 ug/l
 RT: 11.951 min Scan# 1694
 Delta R.T. 0.006 min
 Lab File: VN071165.D
 Acq: 04 Mar 2022 12:52



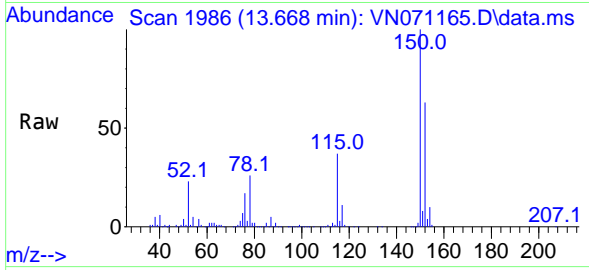
Tgt Ion:106 Resp: 3380
 Ion Ratio Lower Upper
 106 100
 91 192.2 160.6 240.8



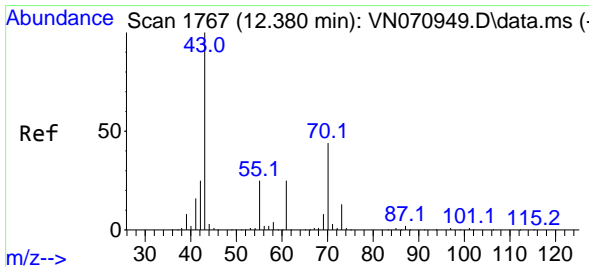
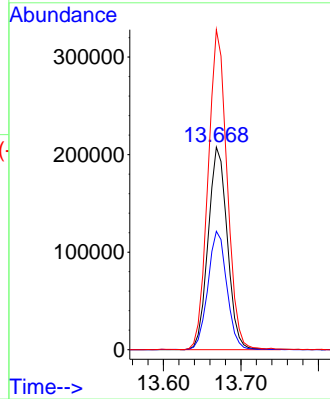
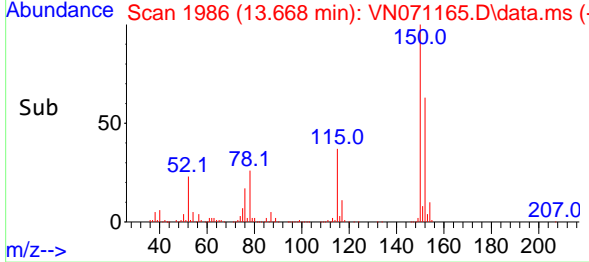


#72
 1,4-Dichlorobenzene-d4
 Concen: 50.000 ug/l
 RT: 13.668 min Scan# 1986
 Delta R.T. -0.000 min
 Lab File: VN071165.D
 Acq: 04 Mar 2022 12:52

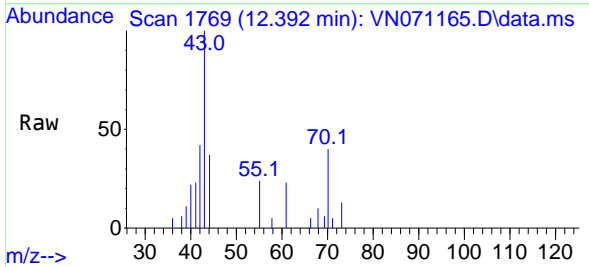
Instrument : MSVOA_N
 ClientSampleId :



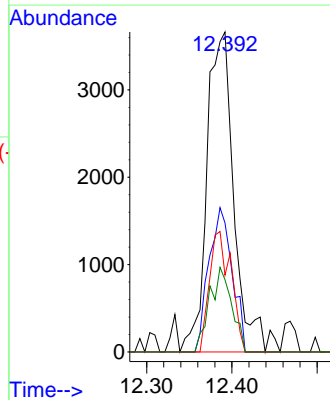
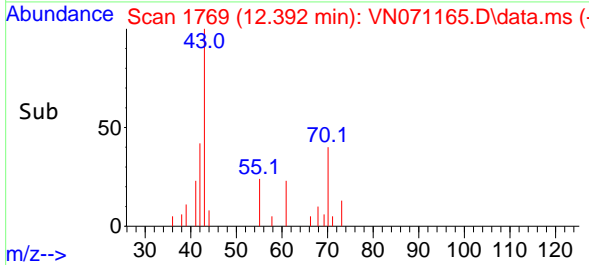
Tgt Ion:152 Resp: 356193
 Ion Ratio Lower Upper
 152 100
 115 58.0 27.5 82.5
 150 157.3 0.0 344.4

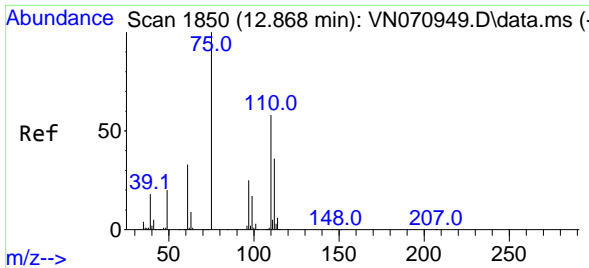


#74
 N-ethyl acetate
 Concen: 0.885 ug/l
 RT: 12.392 min Scan# 1769
 Delta R.T. 0.012 min
 Lab File: VN071165.D
 Acq: 04 Mar 2022 12:52



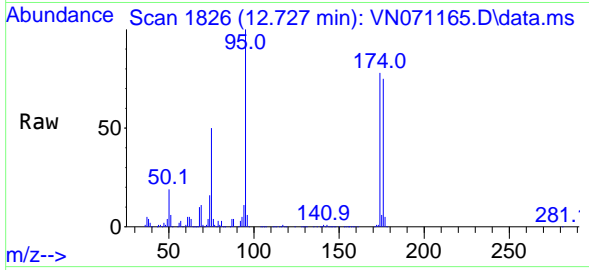
Tgt Ion: 43 Resp: 8109
 Ion Ratio Lower Upper
 43 100
 70 38.7 33.4 50.0
 55 30.0 19.3 28.9#
 61 21.6 18.5 27.7



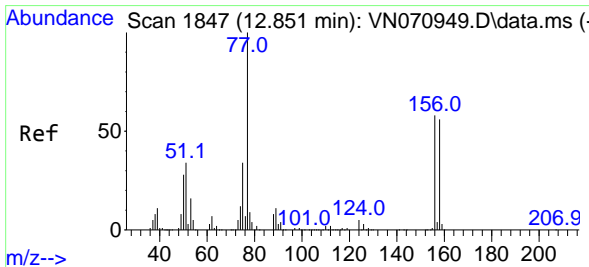
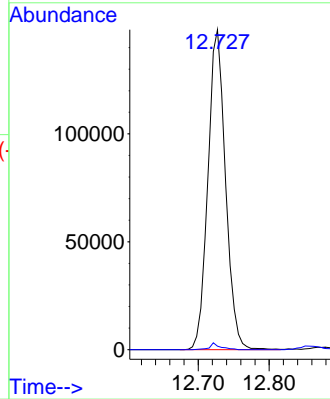
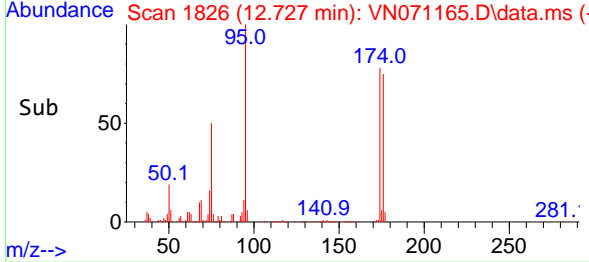


#76
 1,2,3-Trichloropropane
 Concen: 30.477 ug/l
 RT: 12.727 min Scan# 1826
 Delta R.T. -0.141 min
 Lab File: VN071165.D
 Acq: 04 Mar 2022 12:52

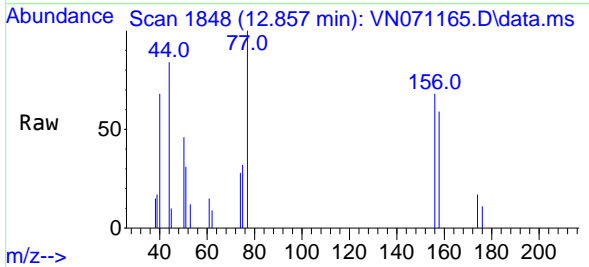
Instrument : MSVOA_N
 ClientSampleId :



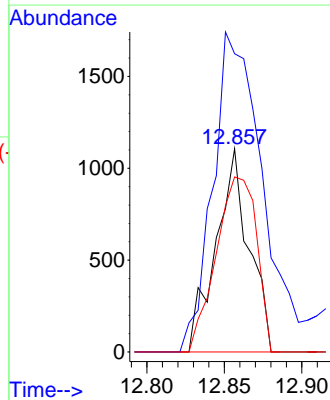
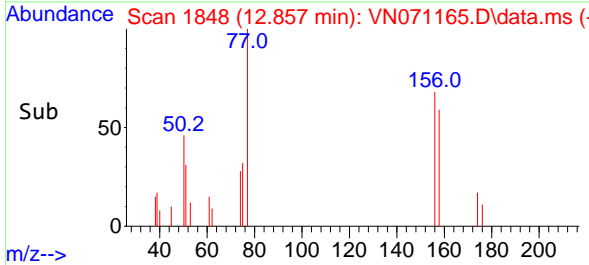
Tgt Ion: 75 Resp: 255598
 Ion Ratio Lower Upper
 75 100
 77 1.3 82.6 247.8#

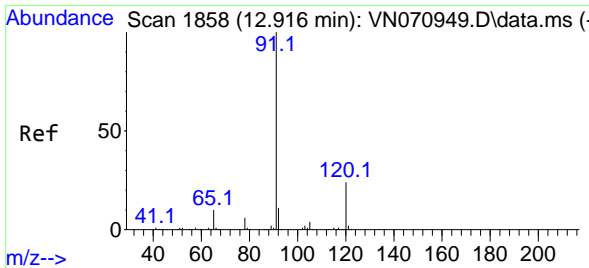


#77
 Bromobenzene
 Concen: 0.234 ug/l
 RT: 12.857 min Scan# 1848
 Delta R.T. 0.006 min
 Lab File: VN071165.D
 Acq: 04 Mar 2022 12:52



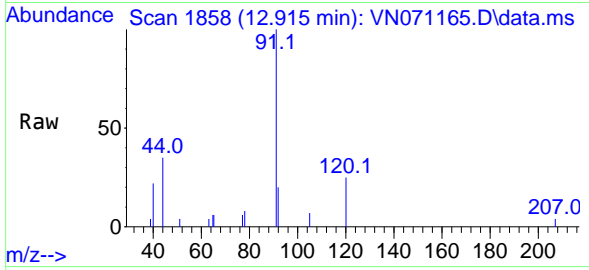
Tgt Ion: 156 Resp: 1643
 Ion Ratio Lower Upper
 156 100
 77 236.2 90.6 271.8
 158 105.2 48.9 146.7



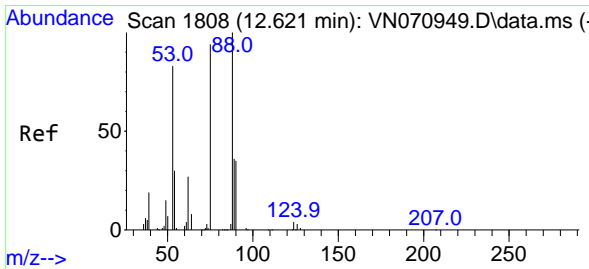
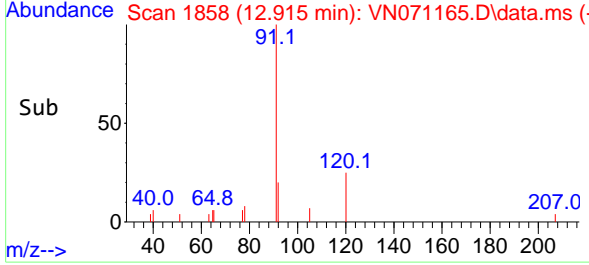
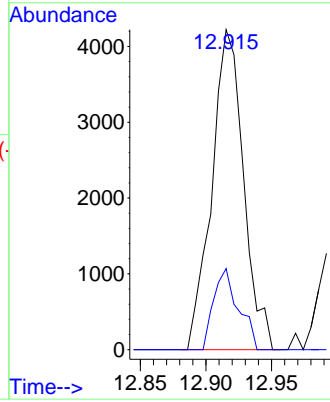


#78
 n-propylbenzene
 Concen: 0.221 ug/l
 RT: 12.915 min Scan# 1858
 Delta R.T. -0.000 min
 Lab File: VN071165.D
 Acq: 04 Mar 2022 12:52

Instrument : MSVOA_N
 ClientSampleId :

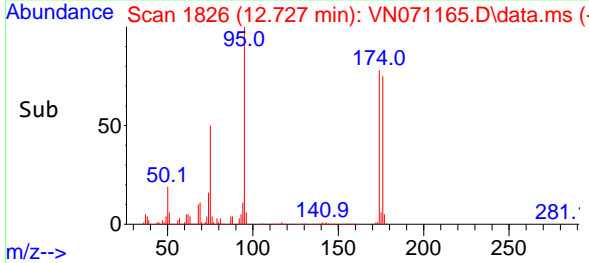
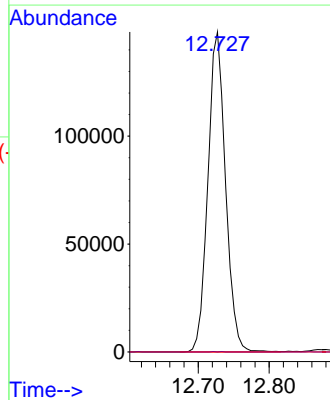
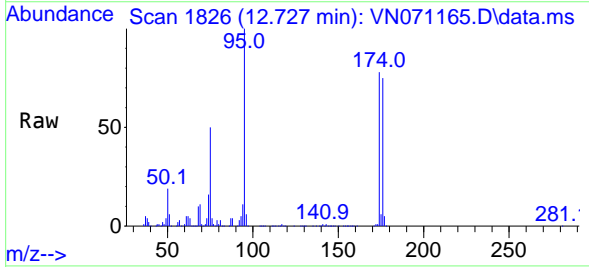


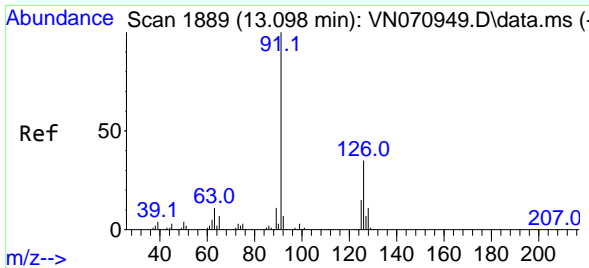
Tgt Ion: 91 Resp: 7103
 Ion Ratio Lower Upper
 91 100
 120 19.8 11.9 35.9



#81
 trans-1,4-Dichloro-2-butene
 Concen: 98.759 ug/l
 RT: 12.727 min Scan# 1826
 Delta R.T. 0.106 min
 Lab File: VN071165.D
 Acq: 04 Mar 2022 12:52

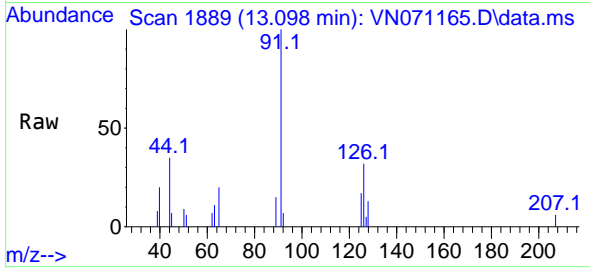
Tgt Ion: 75 Resp: 255598
 Ion Ratio Lower Upper
 75 100
 53 0.1 90.5 135.7#
 89 0.0 38.2 57.4#



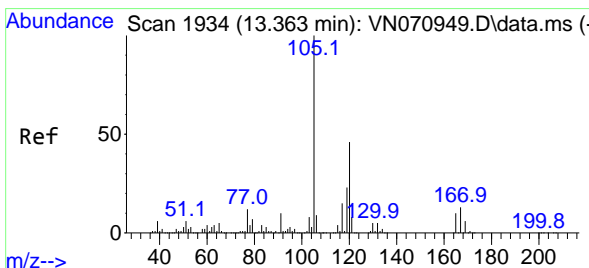
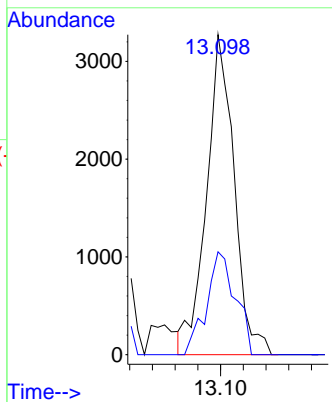
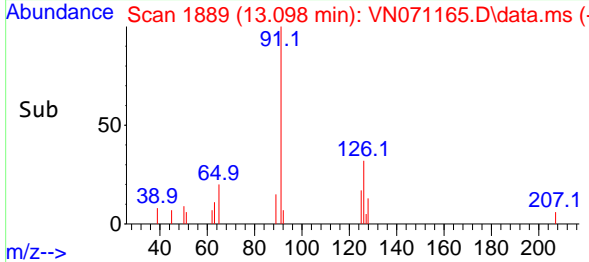


#82
 4-Chlorotoluene
 Concen: 0.291 ug/l
 RT: 13.098 min Scan# 1889
 Delta R.T. -0.000 min
 Lab File: VN071165.D
 Acq: 04 Mar 2022 12:52

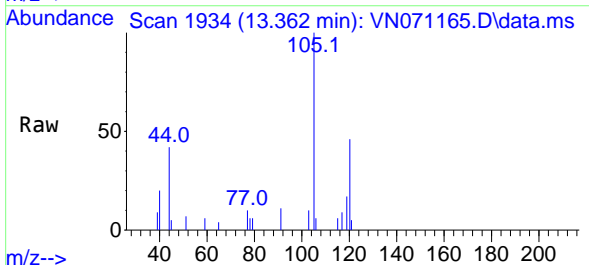
Instrument : MSVOA_N
 ClientSampleId :



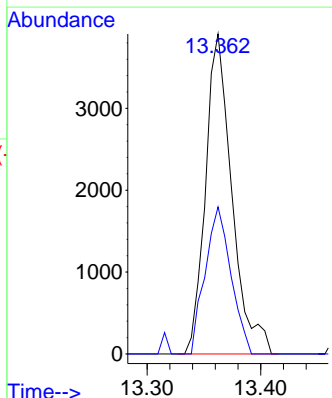
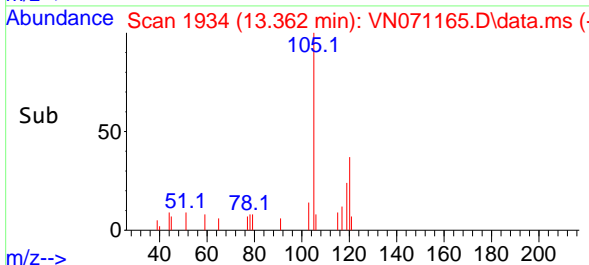
Tgt Ion: 91 Resp: 5535
 Ion Ratio Lower Upper
 91 100
 126 33.6 18.2 54.6

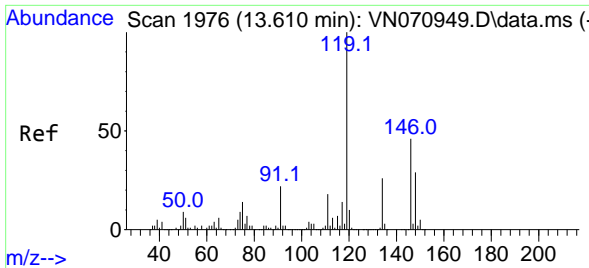


#84
 1,2,4-Trimethylbenzene
 Concen: 0.276 ug/l
 RT: 13.362 min Scan# 1934
 Delta R.T. -0.000 min
 Lab File: VN071165.D
 Acq: 04 Mar 2022 12:52



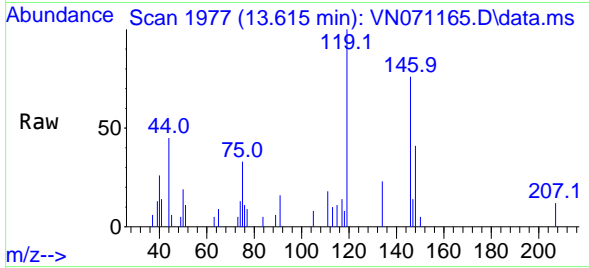
Tgt Ion: 105 Resp: 6307
 Ion Ratio Lower Upper
 105 100
 120 44.8 22.8 68.4



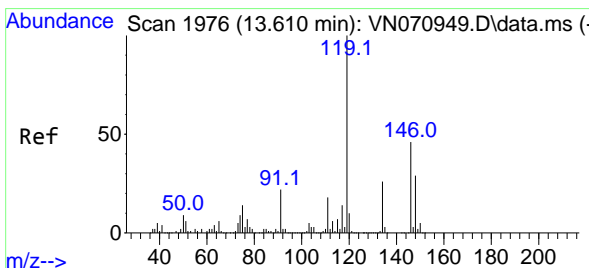
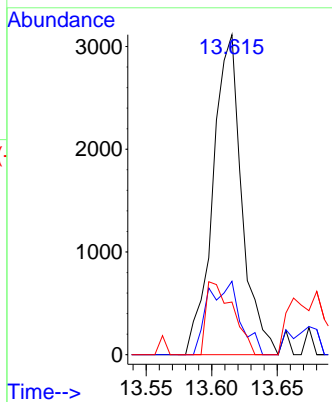
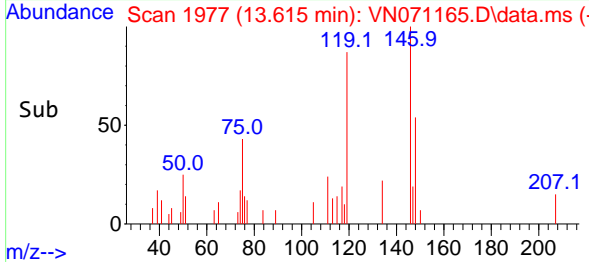


#86
 p-Isopropyltoluene
 Concen: 0.200 ug/l
 RT: 13.615 min Scan# 1977
 Delta R.T. 0.006 min
 Lab File: VN071165.D
 Acq: 04 Mar 2022 12:52

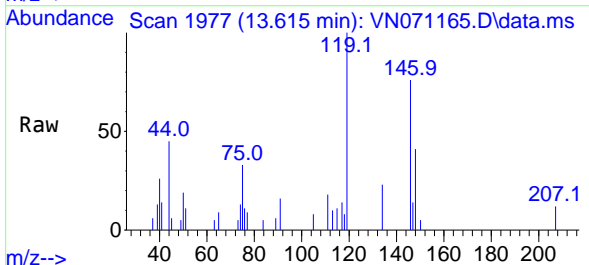
Instrument : MSVOA_N
 ClientSampleId :



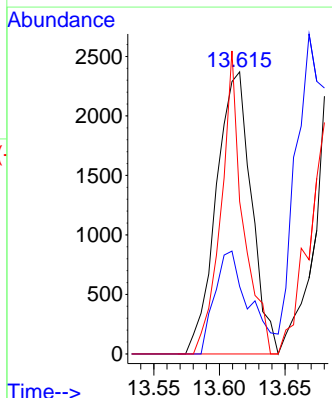
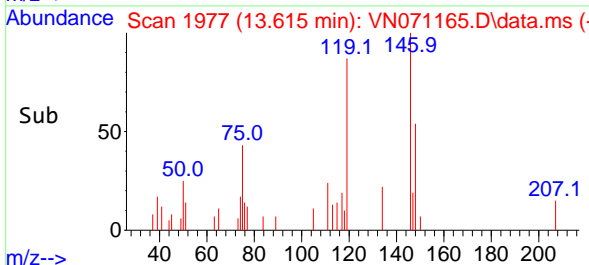
Tgt Ion:119 Resp: 4771
 Ion Ratio Lower Upper
 119 100
 134 25.5 13.6 40.7
 91 21.1 11.4 34.1

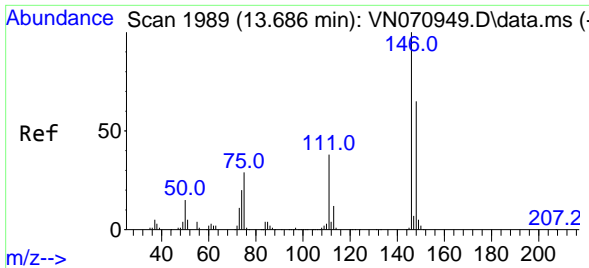


#87
 1,3-Dichlorobenzene
 Concen: 0.355 ug/l
 RT: 13.615 min Scan# 1977
 Delta R.T. 0.006 min
 Lab File: VN071165.D
 Acq: 04 Mar 2022 12:52



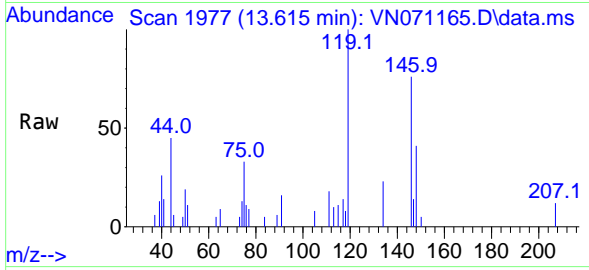
Tgt Ion:146 Resp: 4412
 Ion Ratio Lower Upper
 146 100
 111 36.7 18.6 55.6
 148 67.7 31.6 95.0



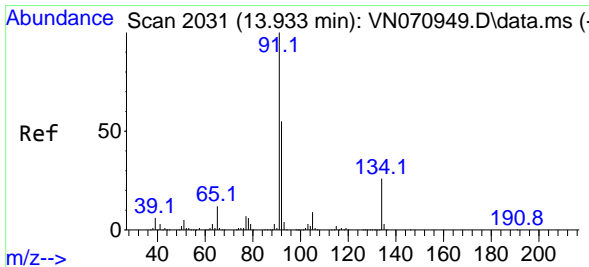
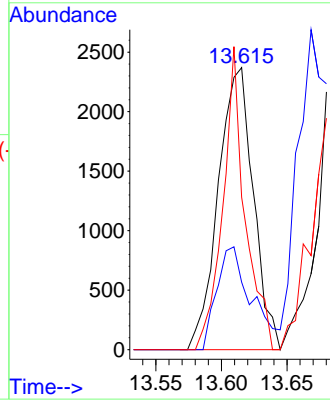
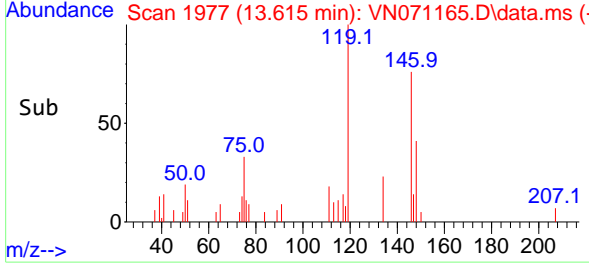


#88
 1,4-Dichlorobenzene
 Concen: 0.362 ug/l
 RT: 13.615 min Scan# 1989
 Delta R.T. -0.071 min
 Lab File: VN071165.D
 Acq: 04 Mar 2022 12:52

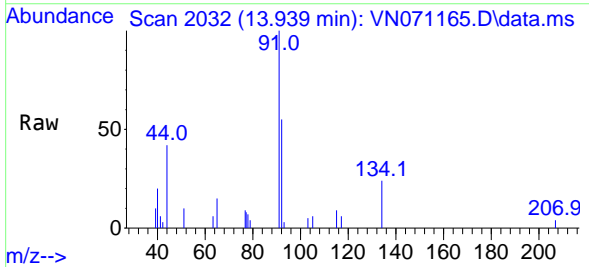
Instrument : MSVOA_N
 ClientSampleId :



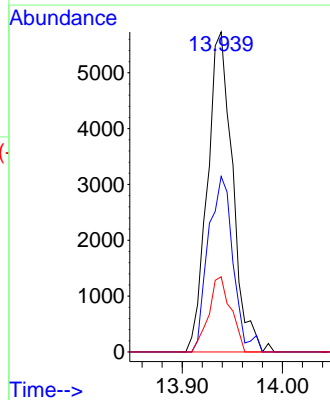
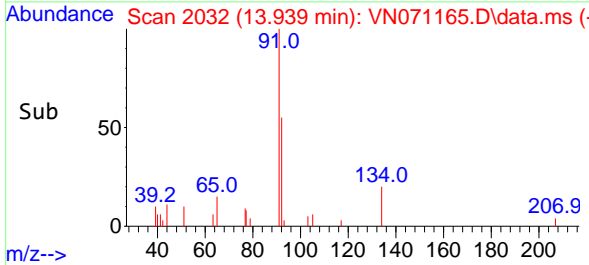
Tgt Ion:146 Resp: 4412
 Ion Ratio Lower Upper
 146 100
 111 36.7 18.3 54.8
 148 67.7 31.8 95.4

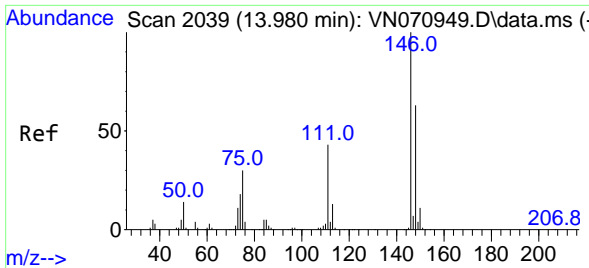


#89
 n-Butylbenzene
 Concen: 0.516 ug/l
 RT: 13.939 min Scan# 2032
 Delta R.T. 0.006 min
 Lab File: VN071165.D
 Acq: 04 Mar 2022 12:52



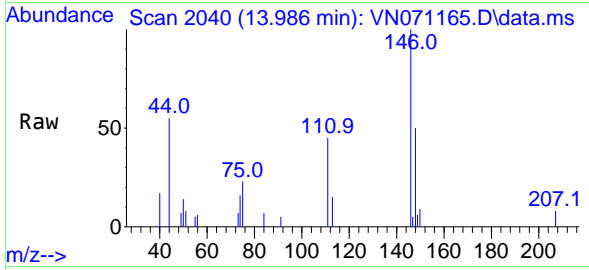
Tgt Ion: 91 Resp: 10025
 Ion Ratio Lower Upper
 91 100
 92 54.2 25.4 76.0
 134 20.7 13.6 40.8



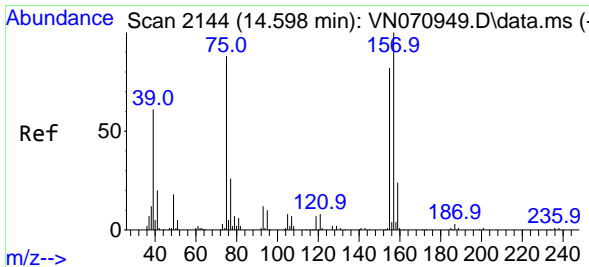
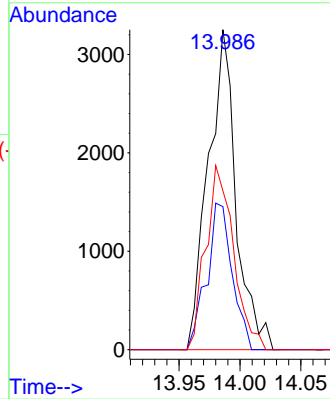
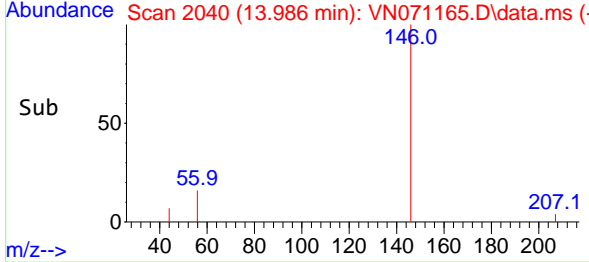


#91
 1,2-Dichlorobenzene
 Concen: 0.442 ug/l
 RT: 13.986 min Scan# 2039
 Delta R.T. 0.006 min
 Lab File: VN071165.D
 Acq: 04 Mar 2022 12:52

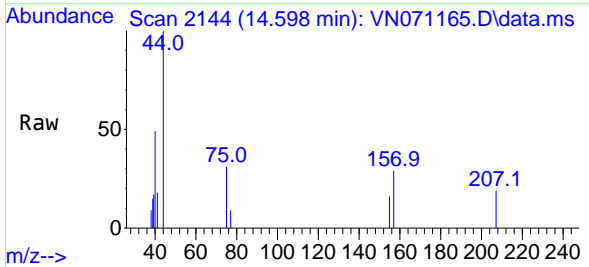
Instrument : MSVOA_N
 ClientSampleId :



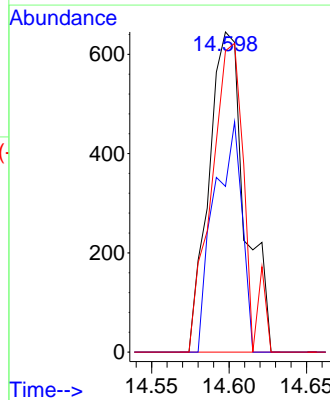
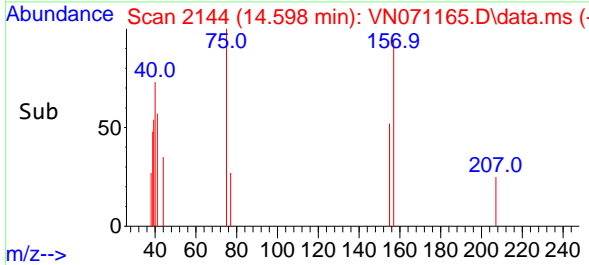
Tgt Ion:146 Resp: 5158
 Ion Ratio Lower Upper
 146 100
 111 41.9 19.1 57.3
 148 57.5 32.1 96.3

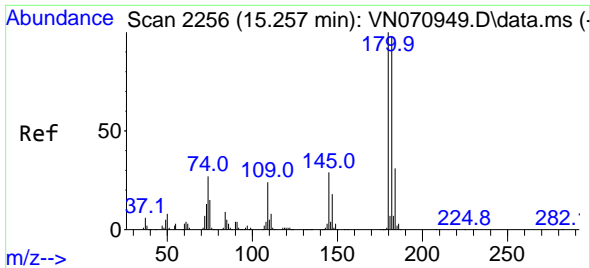


#92
 1,2-Dibromo-3-Chloropropane
 Concen: 0.708 ug/l
 RT: 14.598 min Scan# 2144
 Delta R.T. -0.000 min
 Lab File: VN071165.D
 Acq: 04 Mar 2022 12:52



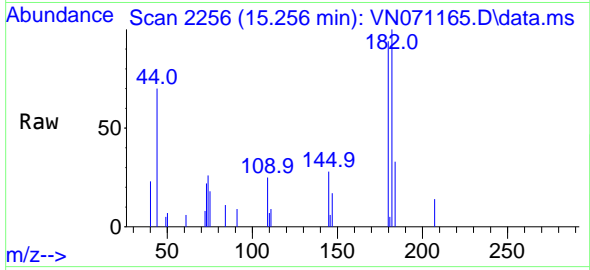
Tgt Ion: 75 Resp: 1045
 Ion Ratio Lower Upper
 75 100
 155 55.2 46.9 140.7
 157 88.8 60.6 181.7



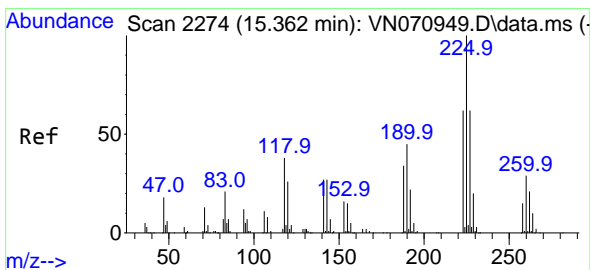
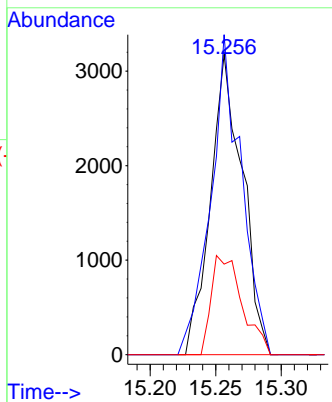
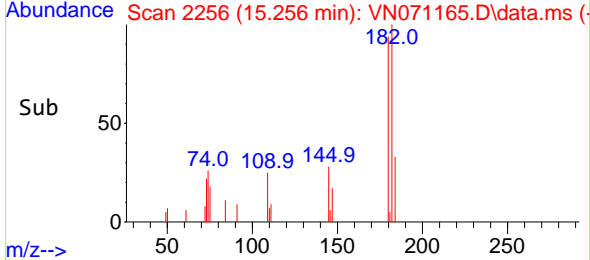


#93
 1,2,4-Trichlorobenzene
 Concen: 2.788 ug/l
 RT: 15.256 min Scan# 21
 Delta R.T. -0.001 min
 Lab File: VN071165.D
 Acq: 04 Mar 2022 12:52

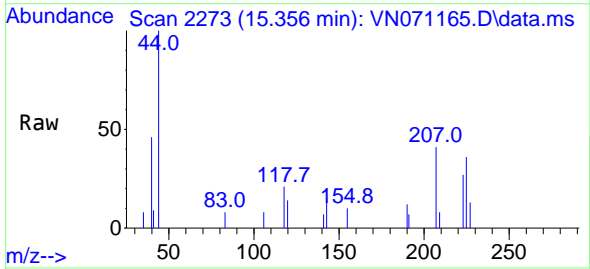
Instrument : MSVOA_N
 ClientSampleId :



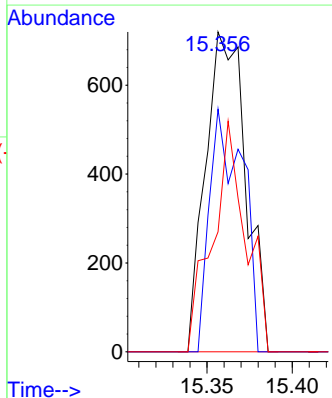
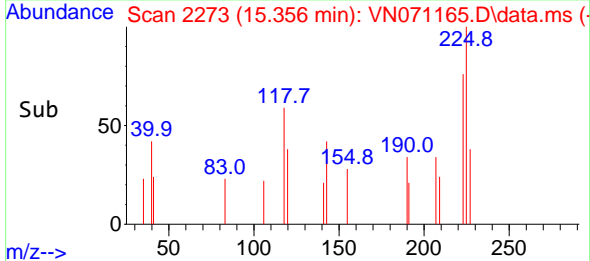
Tgt Ion:180 Resp: 5387
 Ion Ratio Lower Upper
 180 100
 182 101.8 48.3 144.9
 145 31.9 14.5 43.5

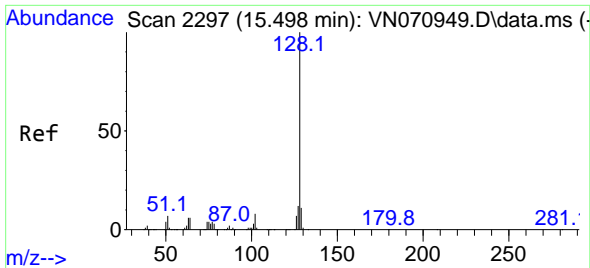


#94
 Hexachlorobutadiene
 Concen: 0.278 ug/l
 RT: 15.356 min Scan# 2273
 Delta R.T. -0.006 min
 Lab File: VN071165.D
 Acq: 04 Mar 2022 12:52



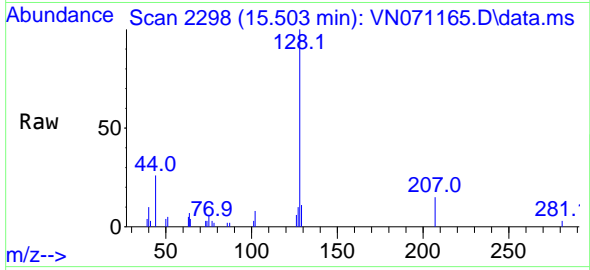
Tgt Ion:225 Resp: 1181
 Ion Ratio Lower Upper
 225 100
 223 62.7 31.9 95.7
 227 59.9 32.1 96.3



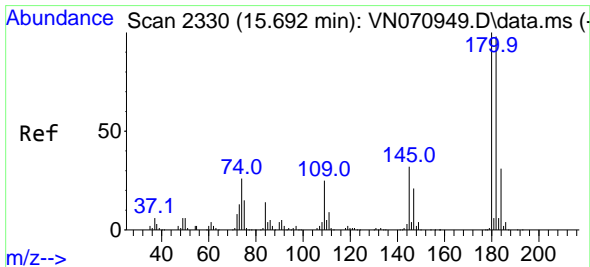
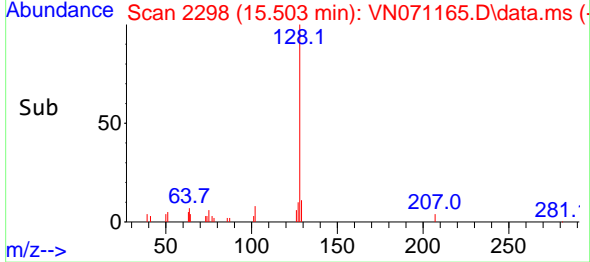
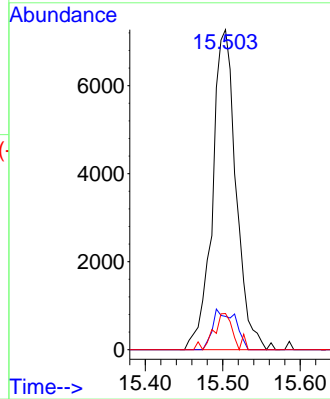


#95
 Naphthalene
 Concen: 5.861 ug/l
 RT: 15.503 min Scan# 21
 Delta R.T. 0.005 min
 Lab File: VN071165.D
 Acq: 04 Mar 2022 12:52

Instrument :
 MSVOA_N
 ClientSampleId :



Tgt Ion:128 Resp: 15408
 Ion Ratio Lower Upper
 128 100
 127 12.0 10.5 15.7
 129 8.5 8.7 13.1#



#96
 1,2,3-Trichlorobenzene
 Concen: 3.504 ug/l
 RT: 15.698 min Scan# 2331
 Delta R.T. 0.006 min
 Lab File: VN071165.D
 Acq: 04 Mar 2022 12:52

Tgt Ion:180 Resp: 6292
 Ion Ratio Lower Upper
 180 100
 182 92.3 47.4 142.2
 145 33.8 15.0 45.1

