

Data Path : Z:\VOASRV\HPCHEM1\MSVOA N\DATA\VN030620\  
 Data File : VN060371.D  
 Acq On : 6 Mar 2020 11:19  
 Operator : JC/MD  
 Sample : VN0306MBL01  
 Misc : 5.00µ/10mL/100uL/5.00mL/MSVOA\_N/MEOH  
 ALS Vial : 3 Sample Multiplier: 1

Instrument :  
 MSVOA\_N  
 ClientSampled :

Quant Time: Mar 07 00:53:32 2020  
 Quant Method : Z:\VOASRV\HPCHEM1\MSVOA\_N\METHODS\82N022720W.M  
 Quant Title : SW846 8260  
 QLast Update : Thu Feb 27 13:52:50 2020  
 Response via : Initial Calibration

Internal Standards	R.T.	QIon	Response	Conc	Units	Dev(Min)
1) Pentafluorobenzene	7.64	168	182228	50.00	µg/l	0.00
34) 1,4-Difluorobenzene	8.56	114	293307	50.00	µg/l	0.00
63) Chlorobenzene-d5	11.40	117	261581	50.00	µg/l	0.00
72) 1,4-Dichlorobenzene-d4	13.34	152	110833	50.00	µg/l	0.00

## System Monitoring Compounds

33) 1,2-Dichloroethane-d4	8.00	65	115080	49.22	µg/l	0.00
Spiked Amount	50.000		Recovery	=	98.44%	
35) Dibromofluoromethane	7.56	113	84562	62.11	µg/l	0.00
Spiked Amount	50.000		Recovery	=	124.22%	
50) Toluene-d8	10.08	98	356736	51.77	µg/l	0.00
Spiked Amount	50.000		Recovery	=	103.54%	
62) 4-Bromofluorobenzene	12.40	95	123647	47.34	µg/l	0.00
Spiked Amount	50.000		Recovery	=	94.68%	

## Target Compounds

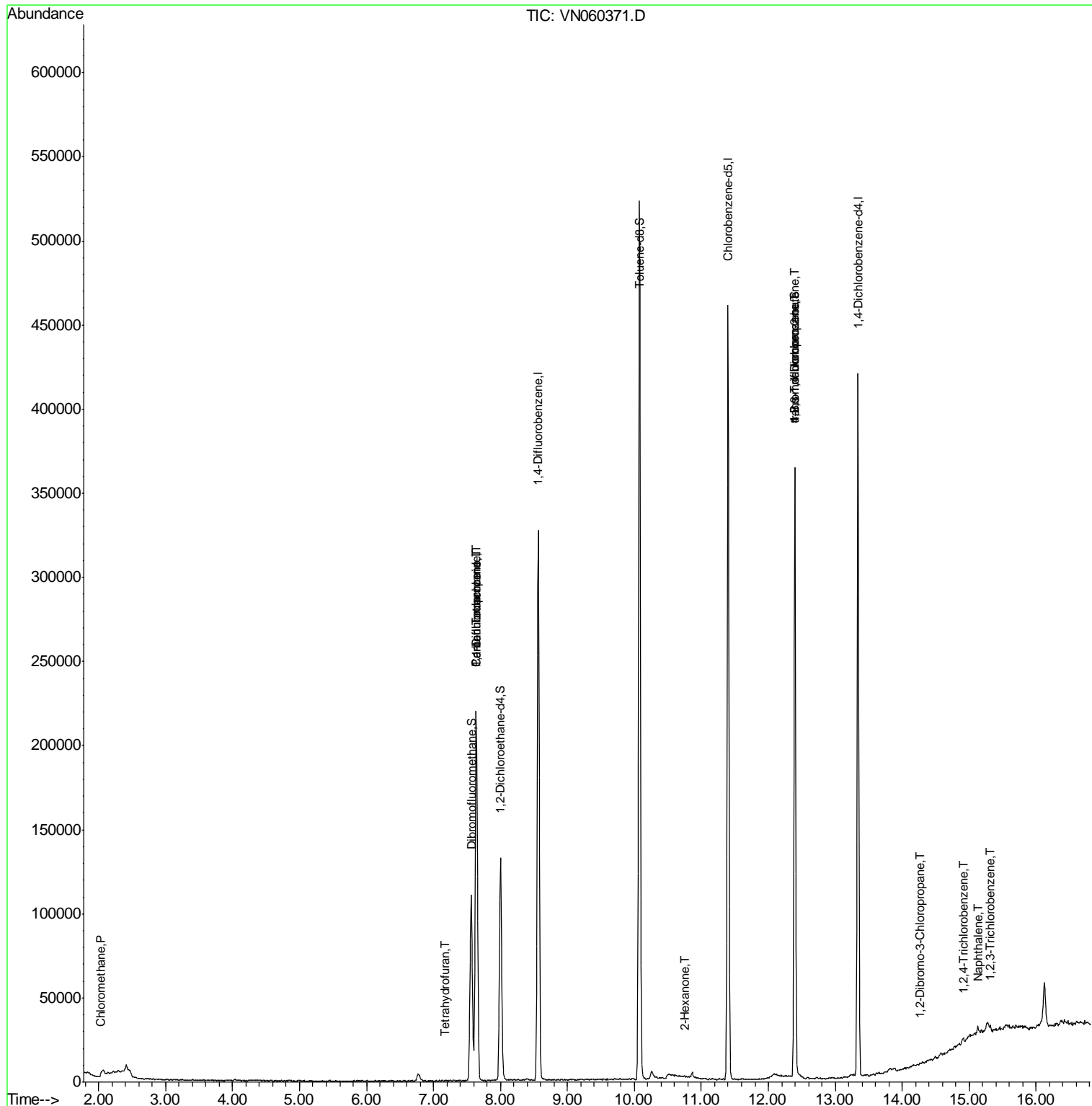
					Qvalue	
3) Chloromethane	2.04	50	1821	0.626	µg/l	90
12) 1,1-Dichloroethene	3.58	96	72	Below Cal	#	1
17) Carbon Disulfide	4.02	76	401	Below Cal	#	75
29) Tetrahydrofuran	7.18	42	326	0.384	µg/l #	33
31) Cyclohexane	7.64	56	3922	Below Cal	#	1
36) 1,1-Dichloropropene	7.64	75	13993	5.006	µg/l #	50
38) Carbon Tetrachloride	7.64	117	16756	6.157	µg/l #	16
59) 2-Hexanone	10.75	43	695	0.360	µg/l #	50
76) 1,2,3-Trichloropropane	12.40	75	63722	26.205	µg/l #	100
81) trans-1,4-Dichloro-2-buten	12.40	75	63722	72.338	µg/l #	8
87) 1,3-Dichlorobenzene	13.28	146	508	Below Cal	#	25
88) 1,4-Dichlorobenzene	13.36	146	575	Below Cal	#	9
92) 1,2-Dibromo-3-Chloropropan	14.27	75	206	0.407	µg/l #	3
93) 1,2,4-Trichlorobenzene	14.91	180	840	0.462	µg/l	88
94) Hexachlorobutadiene	15.01	225	259	Below Cal	#	56
95) Naphthalene	15.13	128	3651	0.283	µg/l #	91
96) 1,2,3-Trichlorobenzene	15.31	180	1210	0.392	µg/l	91

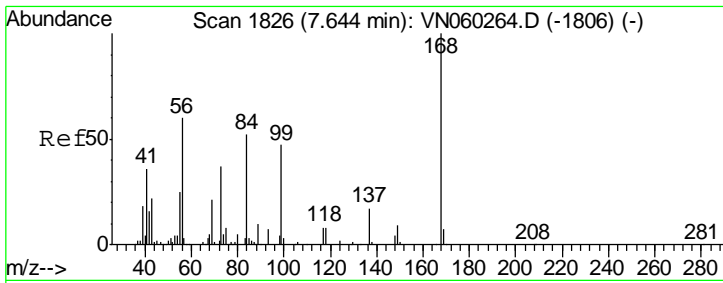
(#) = qualifier out of range (m) = manual integration (+) = signals summed

Data Path : Z:\VOASRV\HPCHEM1\MSVOA N\DATA\VN030620\  
 Data File : VN060371.D  
 Acq On : 6 Mar 2020 11:19  
 Operator : JC/MD  
 Sample : VN0306MBL01  
 Misc : 5.00µ/10mL/100uL/5.00mL/MSVOA\_N/MEOH  
 ALS Vial : 3 Sample Multiplier: 1

Instrument :  
 MSVOA\_N  
 ClientSampled :

Quant Time: Mar 07 00:53:32 2020  
 Quant Method : Z:\VOASRV\HPCHEM1\MSVOA\_N\METHODS\82N022720W.M  
 Quant Title : SW846 8260  
 QLast Update : Thu Feb 27 13:52:50 2020  
 Response via : Initial Calibration

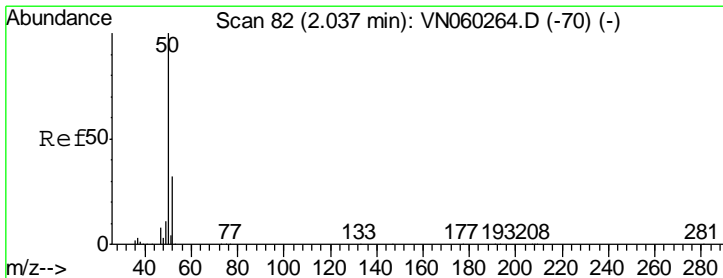
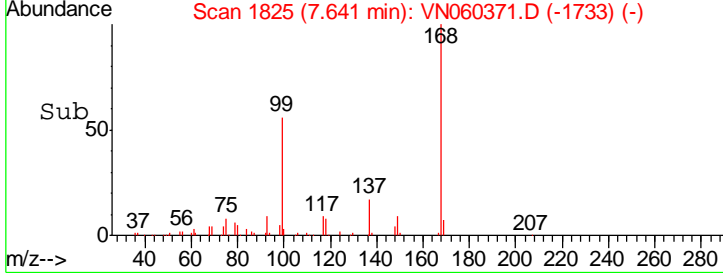
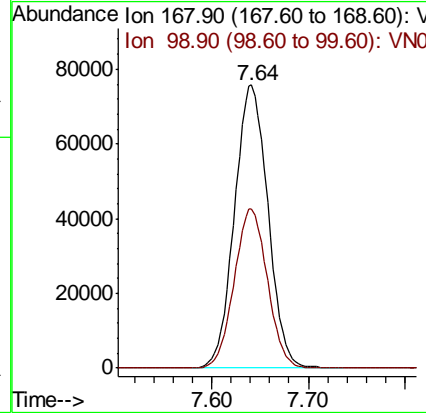
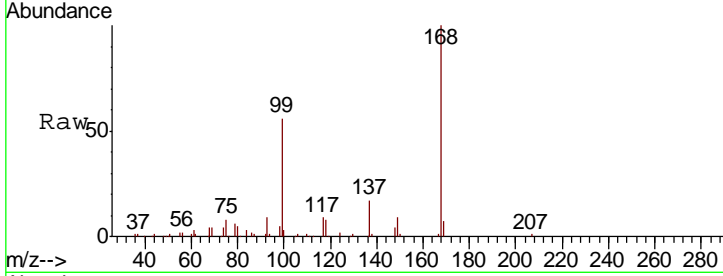




#1  
 Pentafluorobenzene  
 Concen: 50.000 ug/l  
 RT: 7.64 min Scan# 1825  
 Delta R.T. -0.00 min  
 Lab File: VN060371.D  
 Acq: 6 Mar 2020 11:19

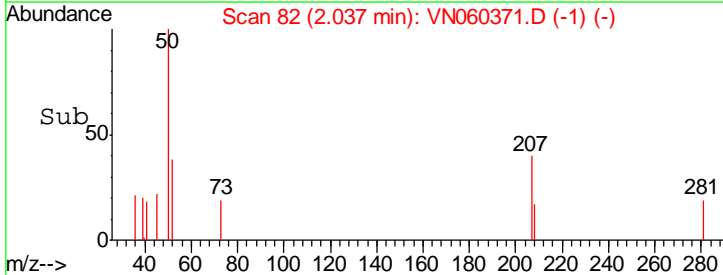
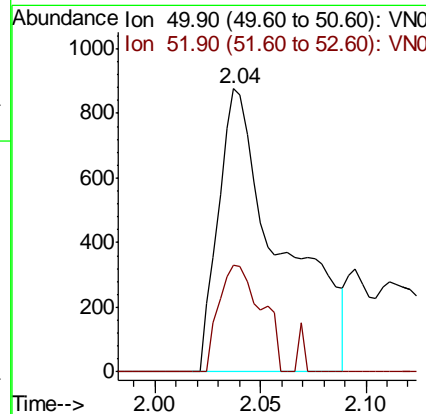
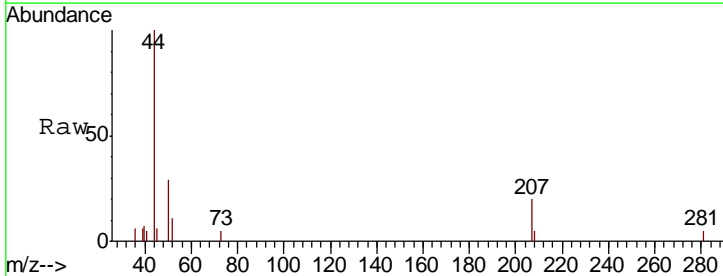
Instrument :  
 MSVOA\_N  
 ClientSampled :

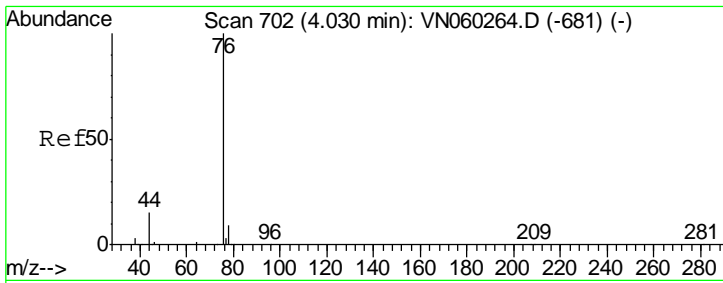
Tgt Ion	Resp	Lower	Upper
168	100		
99	56.2	44.7	67.1



#3  
 Chloromethane  
 Concen: 0.626 ug/l  
 RT: 2.04 min Scan# 82  
 Delta R.T. 0.00 min  
 Lab File: VN060371.D  
 Acq: 6 Mar 2020 11:19

Tgt Ion	Resp	Lower	Upper
50	100		
52	37.6	25.6	38.4

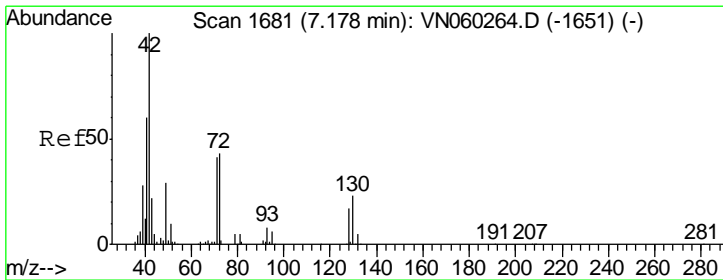
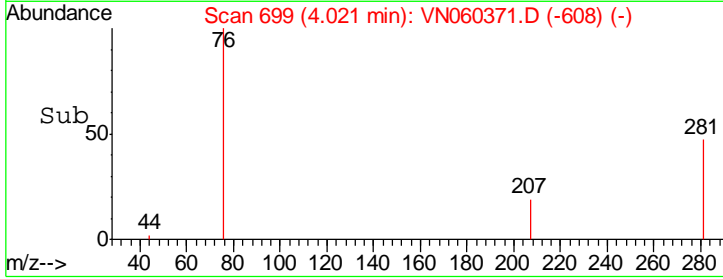
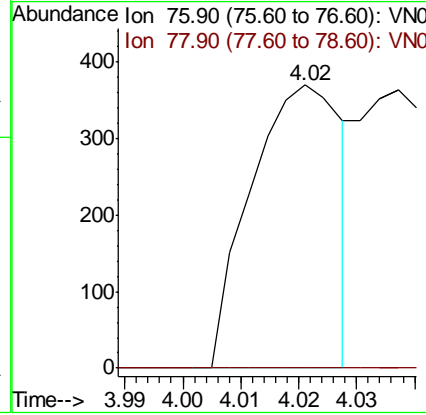
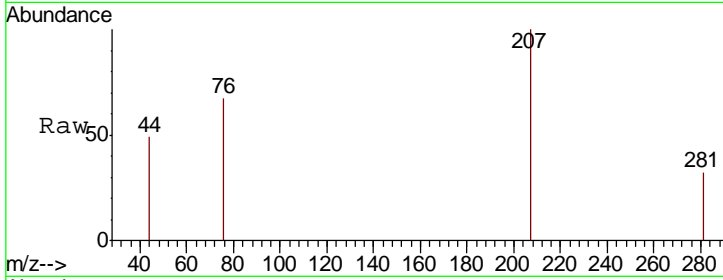




#17  
 Carbon Disulfide  
 Concen: Below Cal  
 RT: 4.02 min Scan# 699  
 Delta R.T. -0.01 min  
 Lab File: VN060371.D  
 Acq: 6 Mar 2020 11:19

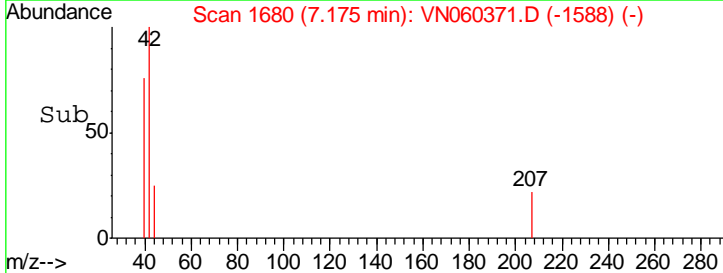
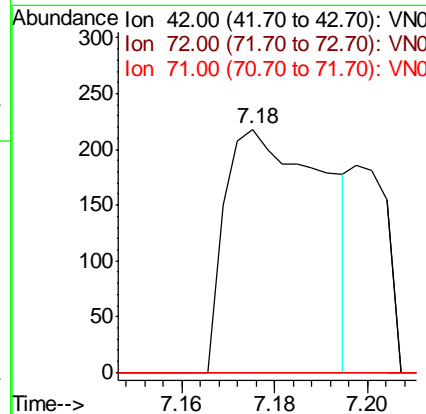
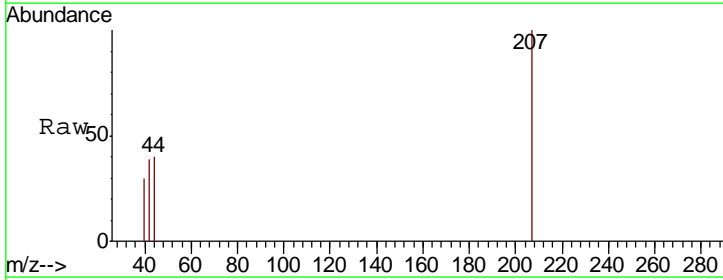
Instrument :  
 MSVOA\_N  
 ClientSampled :

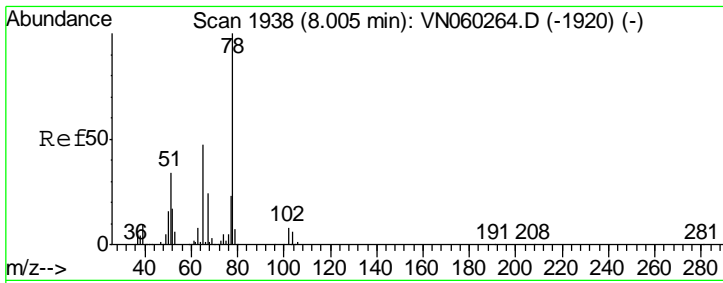
Tgt Ion	Resp	Lower	Upper
76	100		
78	0.0	7.4	11.0#



#29  
 Tetrahydrofuran  
 Concen: 0.384 ug/l  
 RT: 7.18 min Scan# 1680  
 Delta R.T. -0.00 min  
 Lab File: VN060371.D  
 Acq: 6 Mar 2020 11:19

Tgt Ion	Resp	Lower	Upper
42	100		
72	0.0	34.6	52.0#
71	0.0	32.9	49.3#

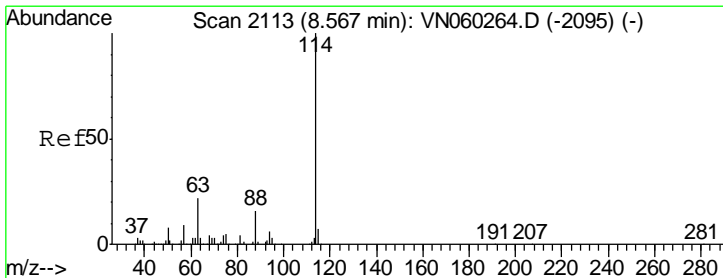
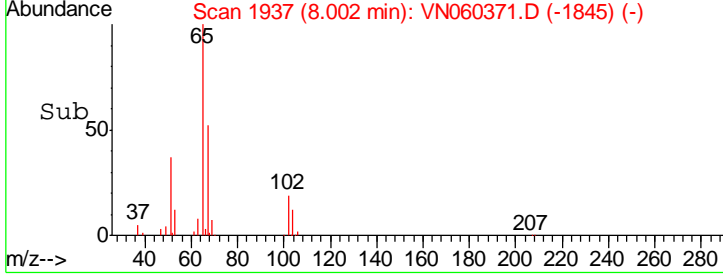
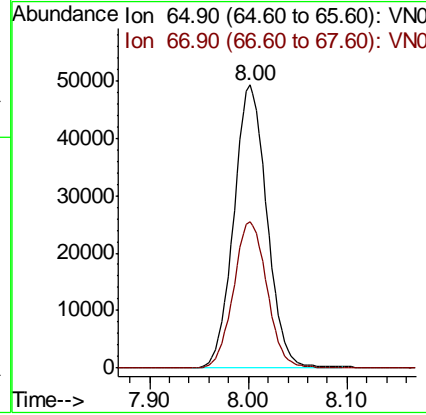
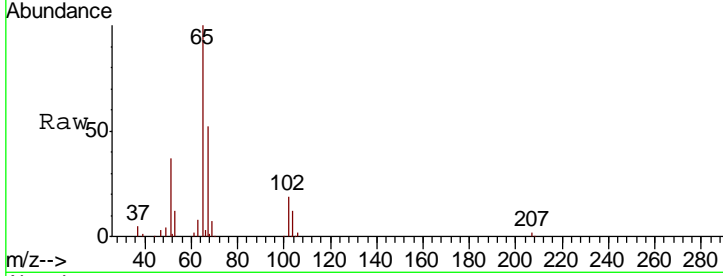




#33  
 1,2-Dichloroethane-d4  
 Concen: 49.221 ug/l  
 RT: 8.00 min Scan# 1937  
 Delta R.T. -0.00 min  
 Lab File: VN060371.D  
 Acq: 6 Mar 2020 11:19

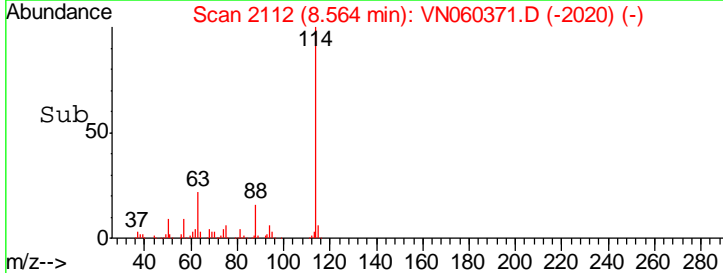
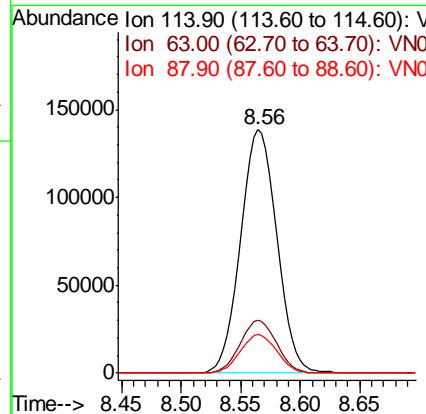
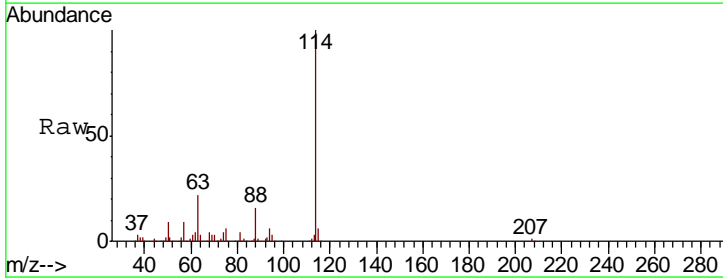
Instrument :  
 MSVOA\_N  
 ClientSampled :

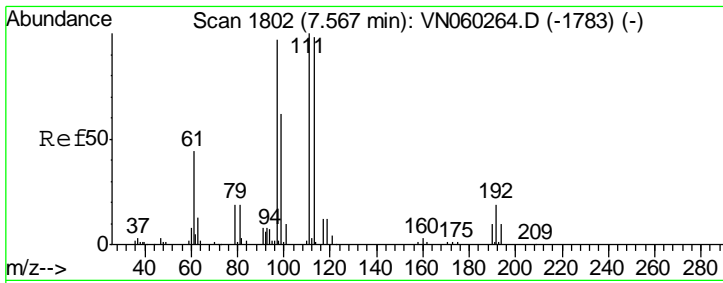
Tgt Ion	Resp	Lower	Upper
65	100		
67	52.1	0.0	103.8



#34  
 1,4-Difluorobenzene  
 Concen: 50.000 ug/l  
 RT: 8.56 min Scan# 2112  
 Delta R.T. -0.00 min  
 Lab File: VN060371.D  
 Acq: 6 Mar 2020 11:19

Tgt Ion	Resp	Lower	Upper
114	100		
63	21.9	0.0	43.2
88	15.9	0.0	31.6

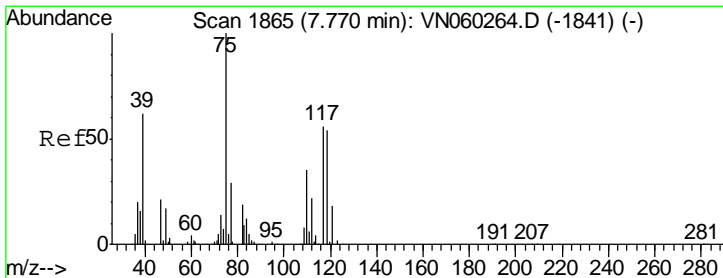
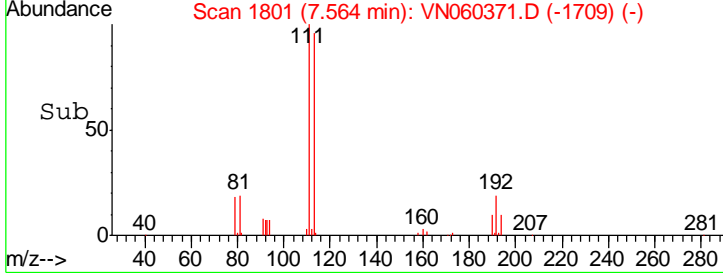
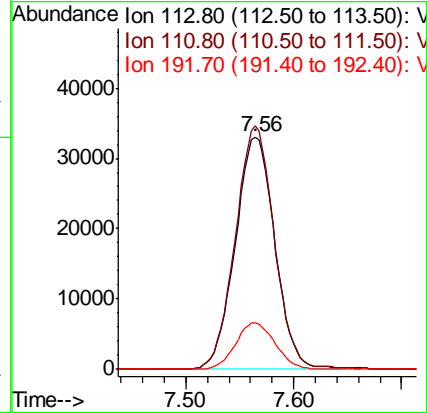
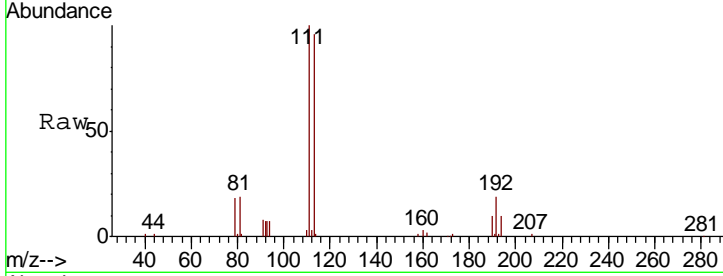




#35  
 Dibromofluoromethane  
 Concen: 62.112 ug/l  
 RT: 7.56 min Scan# 1801  
 Delta R.T. -0.00 min  
 Lab File: VN060371.D  
 Acq: 6 Mar 2020 11:19

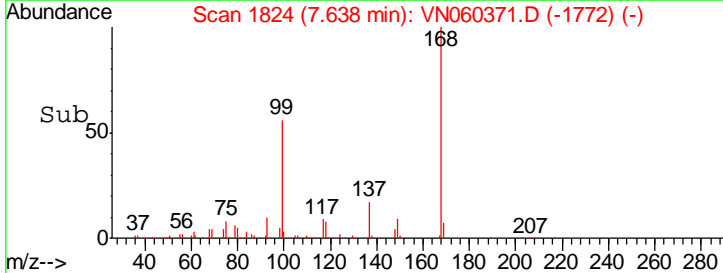
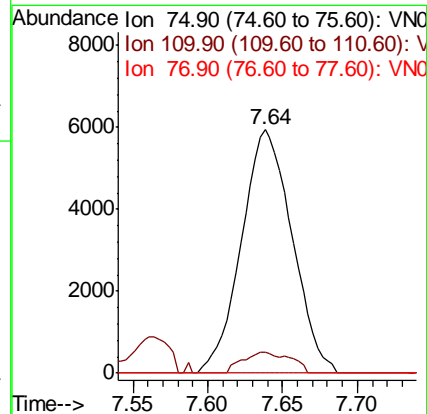
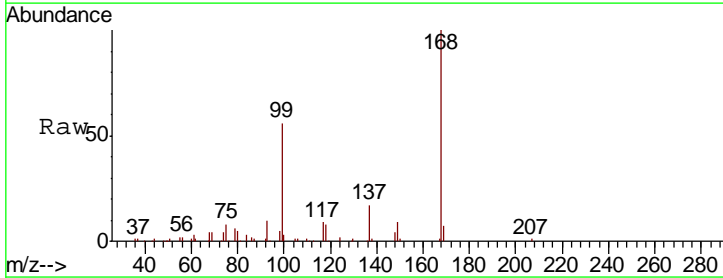
Instrument :  
 MSVOA\_N  
 ClientSampled :

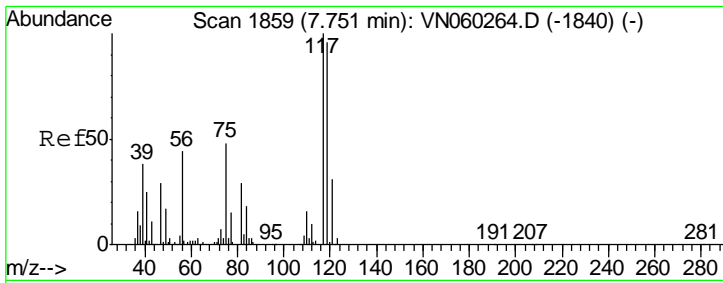
Tgt Ion	Resp	Lower	Upper
113	100		
111	103.1	82.4	123.6
192	19.9	16.2	24.2



#36  
 1,1-Dichloropropene  
 Concen: 5.006 ug/l  
 RT: 7.64 min Scan# 1824  
 Delta R.T. -0.13 min  
 Lab File: VN060371.D  
 Acq: 6 Mar 2020 11:19

Tgt Ion	Resp	Lower	Upper
75	100		
110	8.2	17.3	52.0#
77	0.0	24.2	36.2#

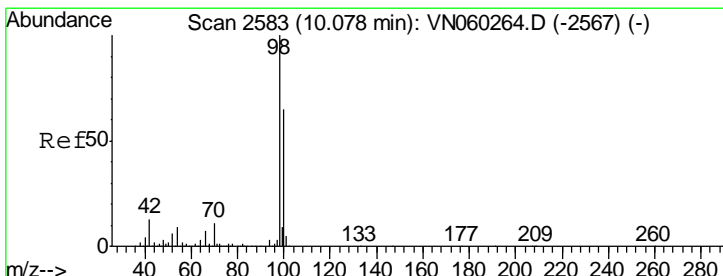
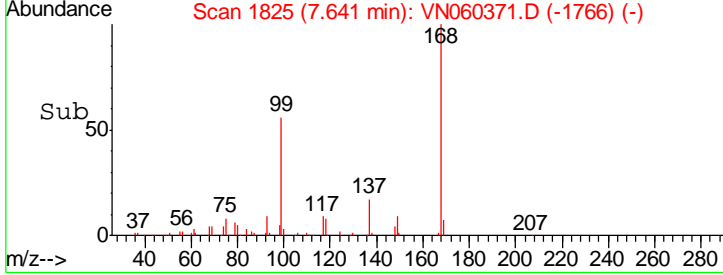
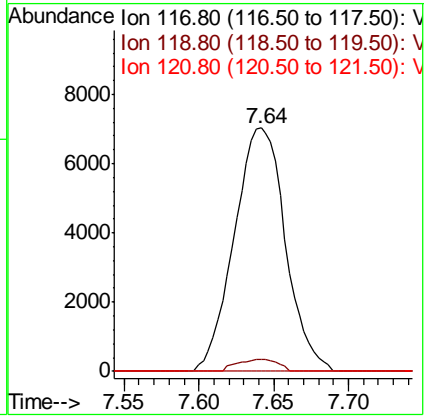
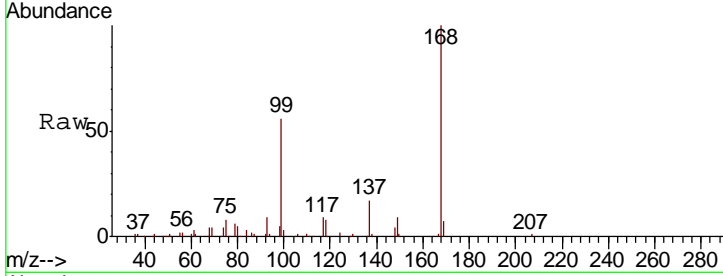




#38  
 Carbon Tetrachloride  
 Concen: 6.157 ug/l  
 RT: 7.64 min Scan# 1825  
 Delta R.T. -0.11 min  
 Lab File: VN060371.D  
 Acq: 6 Mar 2020 11:19

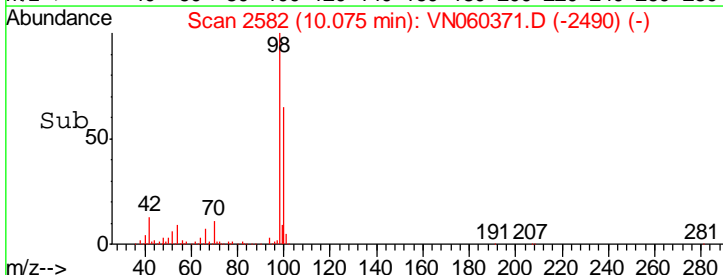
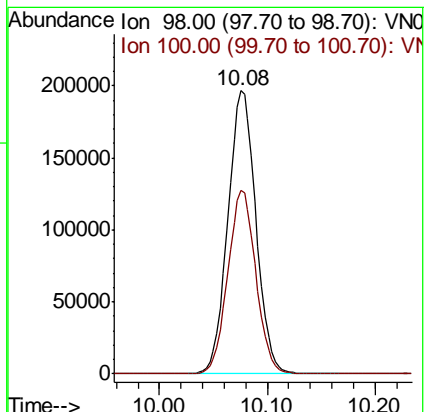
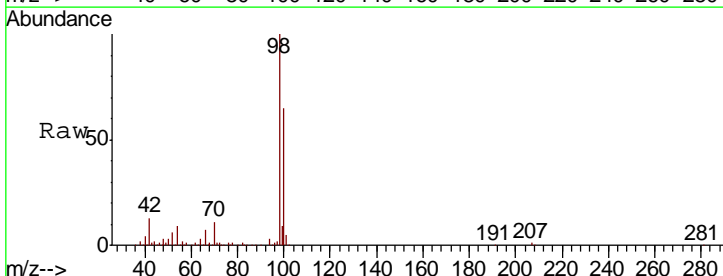
Instrument :  
 MSVOA\_N  
 ClientSampled :

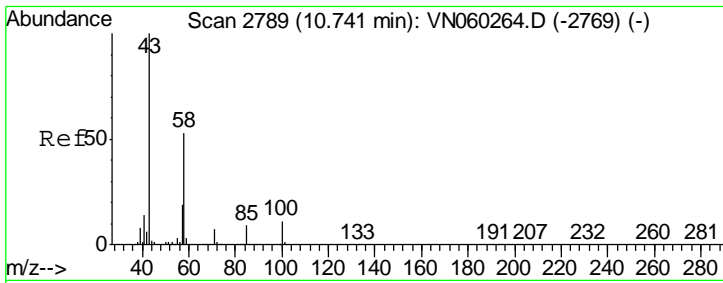
Tgt Ion	Resp	Lower	Upper
117	16756		
119	5.0	76.7	115.1#
121	0.0	24.5	36.7#



#50  
 Toluene-d8  
 Concen: 51.773 ug/l  
 RT: 10.08 min Scan# 2582  
 Delta R.T. -0.00 min  
 Lab File: VN060371.D  
 Acq: 6 Mar 2020 11:19

Tgt Ion	Resp	Lower	Upper
98	356736		
100	64.8	52.2	78.2

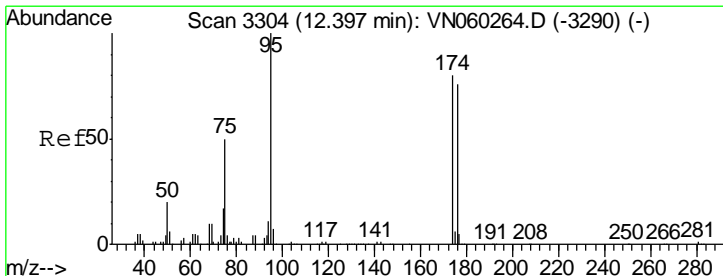
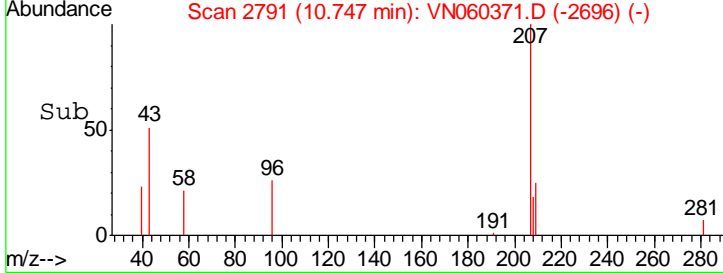
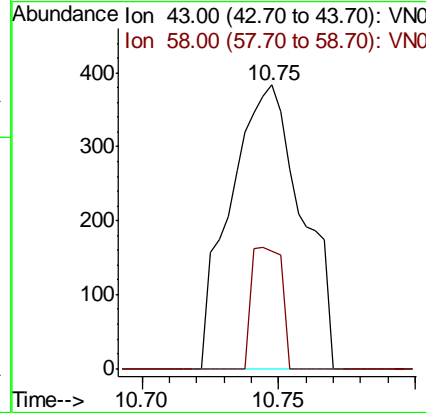
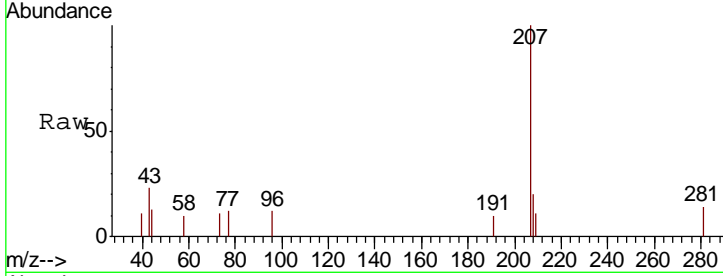




#59  
 2-Hexanone  
 Concen: 0.360 ug/l  
 RT: 10.75 min Scan# 2791  
 Delta R.T. 0.01 min  
 Lab File: VN060371.D  
 Acq: 6 Mar 2020 11:19

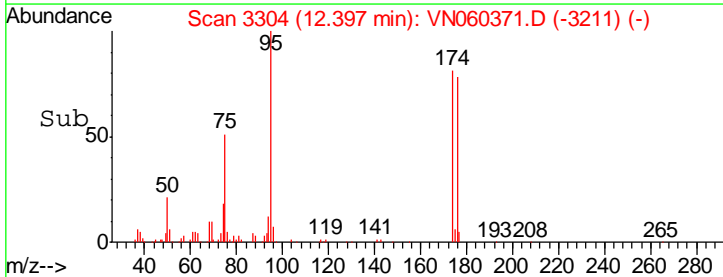
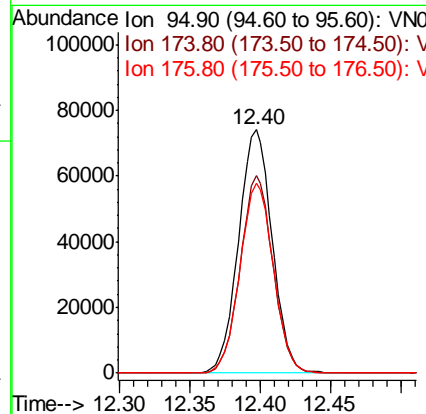
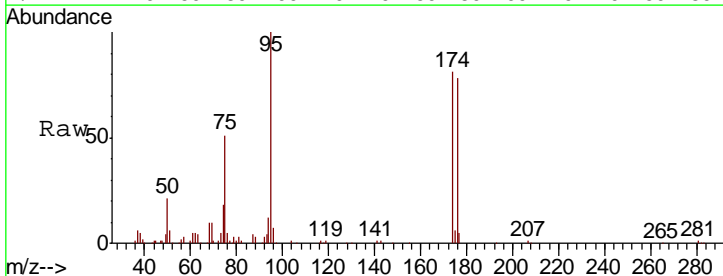
Instrument : MSVOA\_N  
 Client Sampled :

Tgt Ion	Resp	Lower	Upper
43	100		
58	17.7	26.5	79.5#

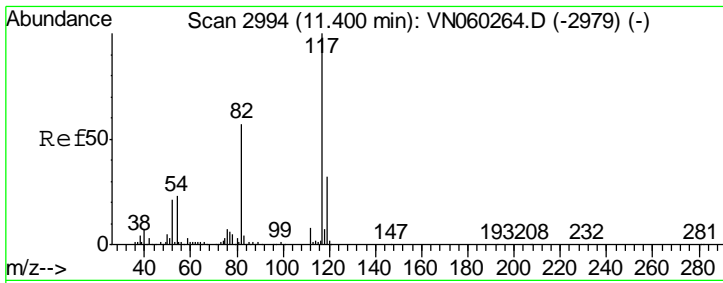


#62  
 4-Bromofluorobenzene  
 Concen: 47.338 ug/l  
 RT: 12.40 min Scan# 3304  
 Delta R.T. 0.00 min  
 Lab File: VN060371.D  
 Acq: 6 Mar 2020 11:19

Tgt Ion	Resp	Lower	Upper
95	100		
174	79.1	0.0	159.2
176	77.8	0.0	153.8



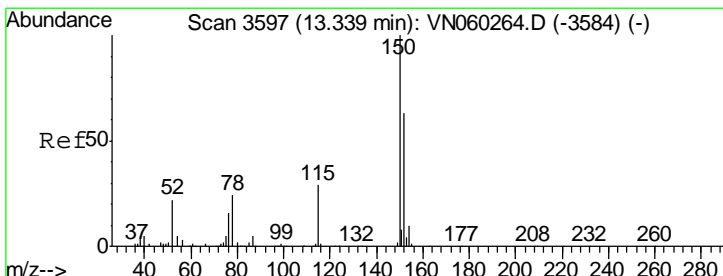
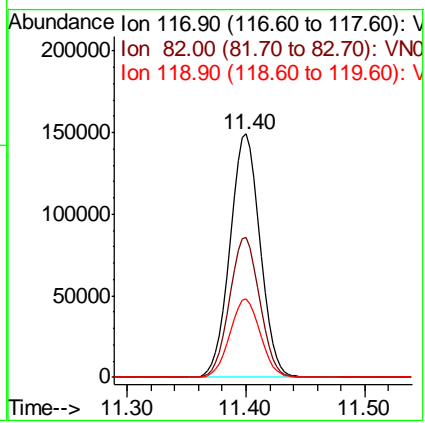
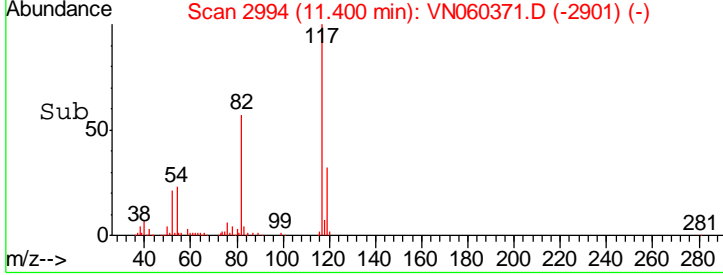
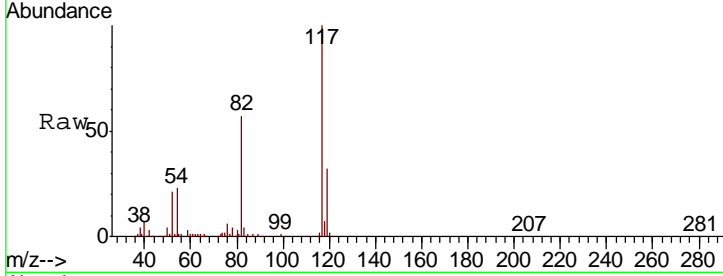




#63  
 Chlorobenzene-d5  
 Concen: 50.000 ug/l  
 RT: 11.40 min Scan# 2994  
 Delta R.T. 0.00 min  
 Lab File: VN060371.D  
 Acq: 6 Mar 2020 11:19

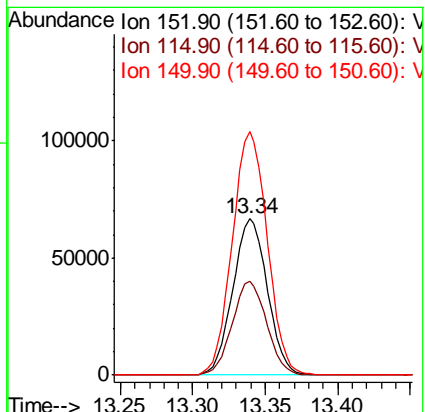
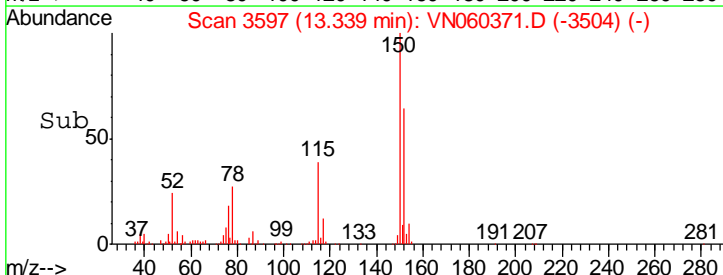
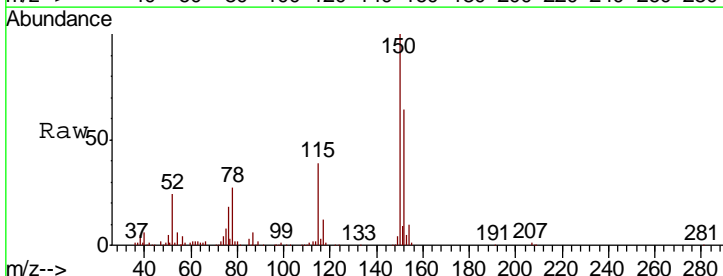
Instrument :  
 MSVOA\_N  
 ClientSampled :

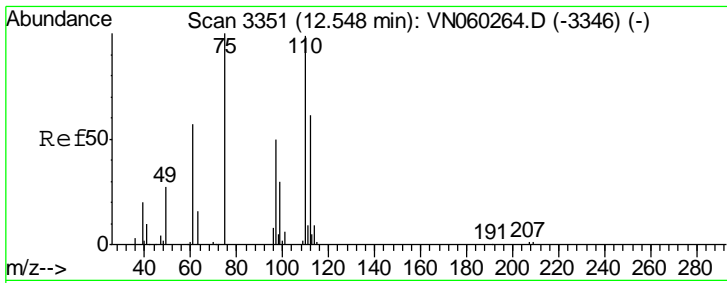
Tgt Ion	Resp	Lower	Upper
117	261581		
82	57.4	45.8	68.6
119	32.4	25.8	38.8



#72  
 1,4-Dichlorobenzene-d4  
 Concen: 50.000 ug/l  
 RT: 13.34 min Scan# 3597  
 Delta R.T. 0.00 min  
 Lab File: VN060371.D  
 Acq: 6 Mar 2020 11:19

Tgt Ion	Resp	Lower	Upper
152	110833		
115	59.4	30.0	90.0
150	157.1	0.0	349.6

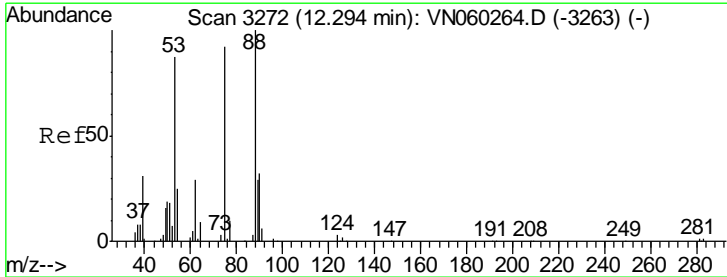
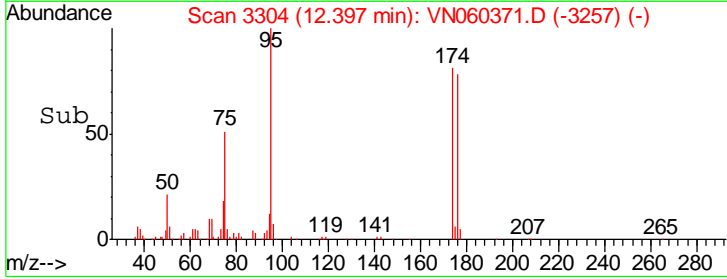
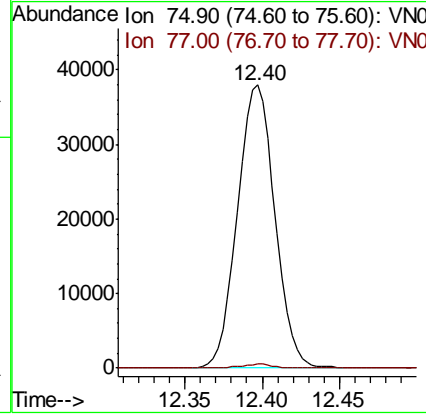
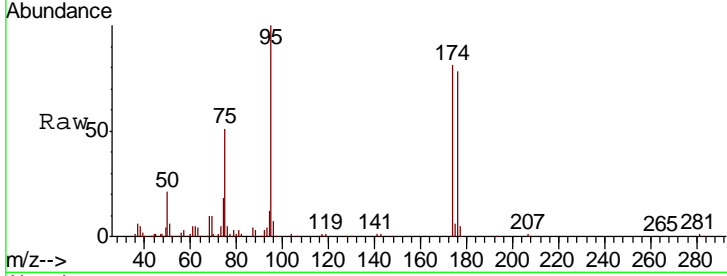




#76  
 1,2,3-Trichloropropane  
 Concen: 26.205 ug/l  
 RT: 12.40 min Scan# 3304  
 Delta R.T. -0.15 min  
 Lab File: VN060371.D  
 Acq: 6 Mar 2020 11:19

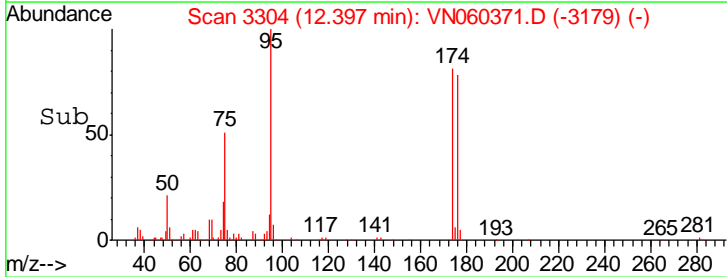
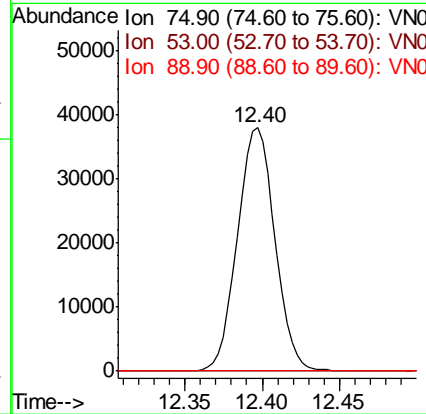
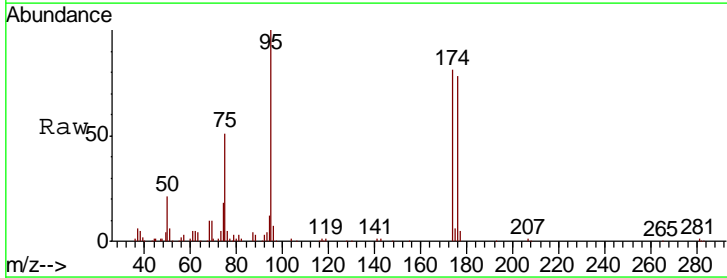
Instrument :  
 MSVOA\_N  
 ClientSampled :

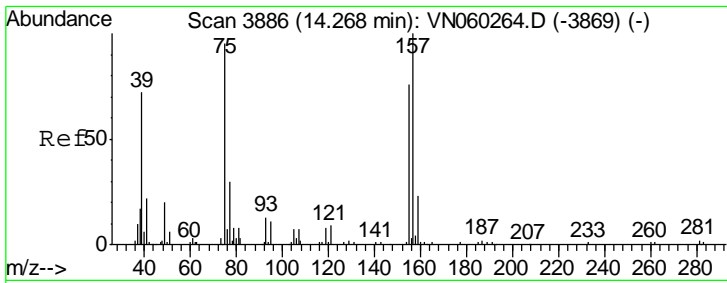
Tgt Ion	Resp	Lower	Upper
75	100		
77	1.1	0.0	0.0#



#81  
 trans-1,4-Dichloro-2-butene  
 Concen: 72.338 ug/l  
 RT: 12.40 min Scan# 3304  
 Delta R.T. 0.10 min  
 Lab File: VN060371.D  
 Acq: 6 Mar 2020 11:19

Tgt Ion	Resp	Lower	Upper
75	100		
53	0.0	73.8	110.6#
89	0.0	57.1	85.7#

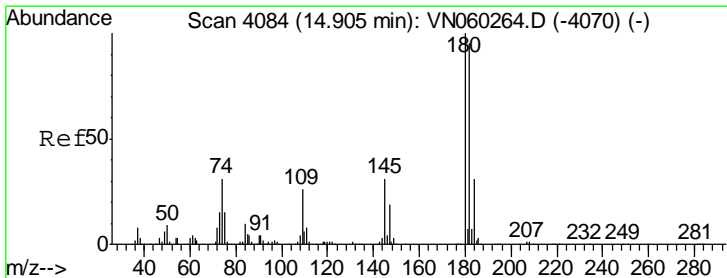
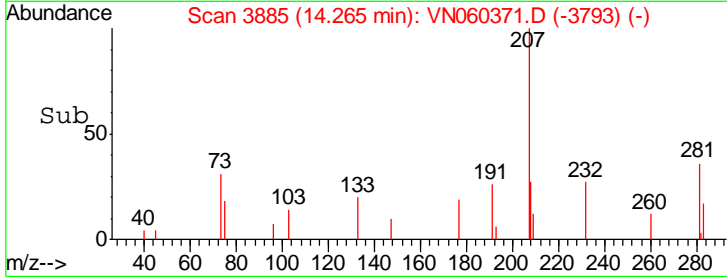
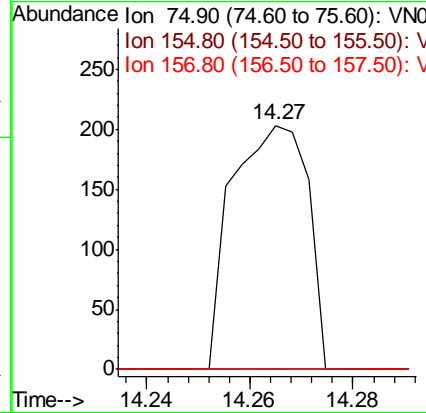
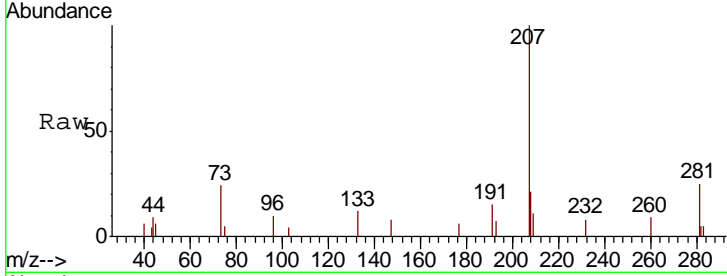




#92  
 1,2-Dibromo-3-Chloropropane  
 Concen: 0.407 ug/l  
 RT: 14.27 min Scan# 3885  
 Delta R.T. -0.00 min  
 Lab File: VN060371.D  
 Acq: 6 Mar 2020 11:19

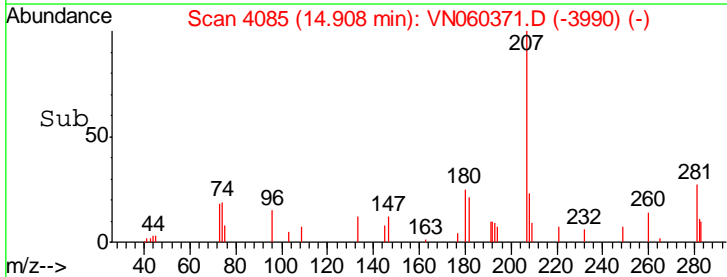
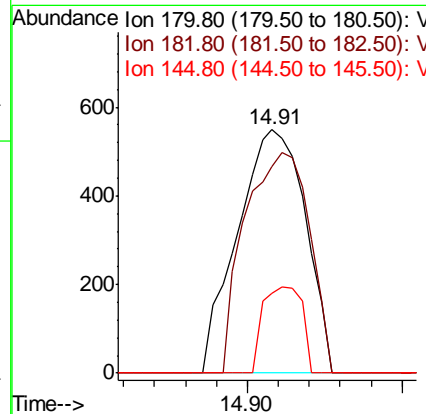
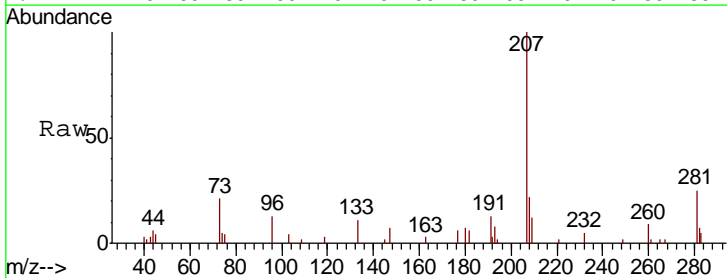
Instrument :  
 MSVOA\_N  
 ClientSampled :

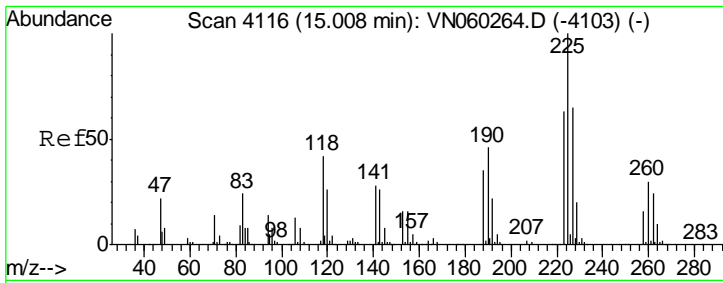
Tgt Ion	Resp	Lower	Upper
75	100		
155	0.0	40.4	121.2#
157	0.0	52.5	157.5#



#93  
 1,2,4-Trichlorobenzene  
 Concen: 0.462 ug/l  
 RT: 14.91 min Scan# 4085  
 Delta R.T. 0.00 min  
 Lab File: VN060371.D  
 Acq: 6 Mar 2020 11:19

Tgt Ion	Resp	Lower	Upper
180	100		
182	86.0	47.8	143.3
145	20.6	15.4	46.1

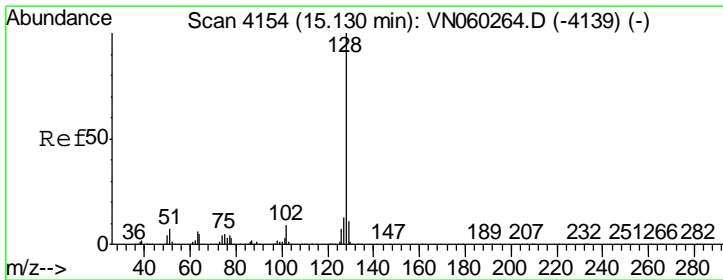
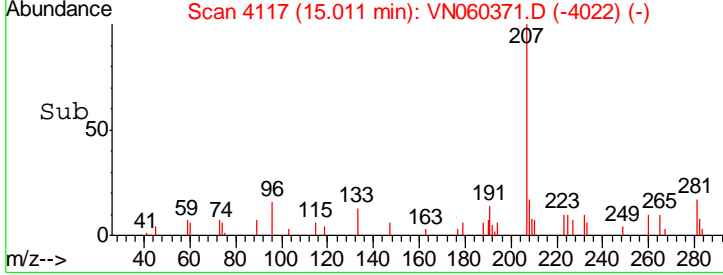
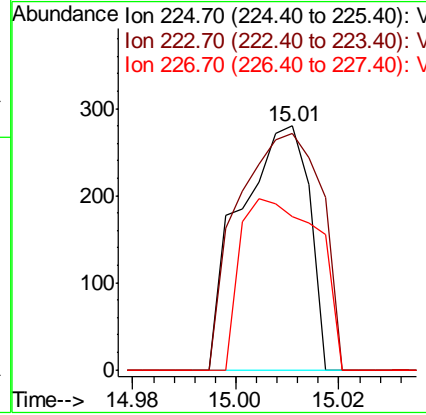
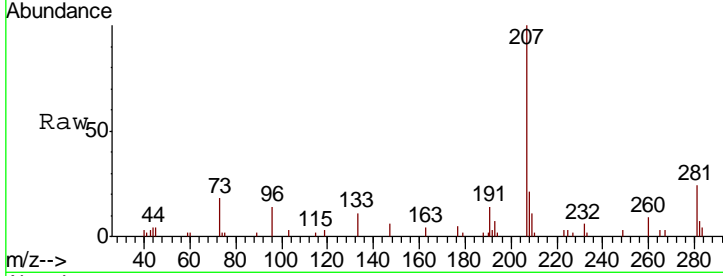




#94  
 Hexachlorobutadiene  
 Concen: Below Cal  
 RT: 15.01 min Scan# 4117  
 Delta R.T. 0.00 min  
 Lab File: VN060371.D  
 Acq: 6 Mar 2020 11:19

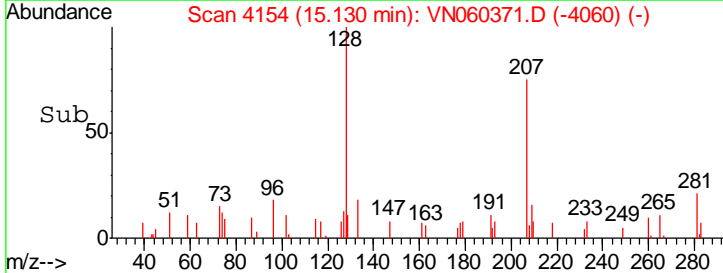
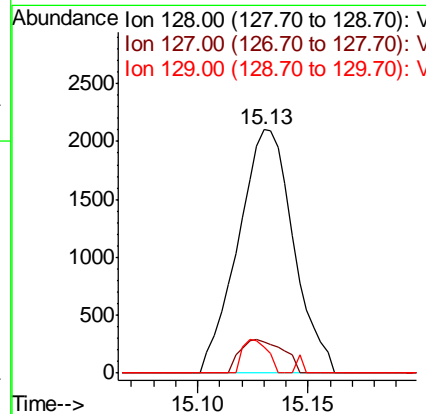
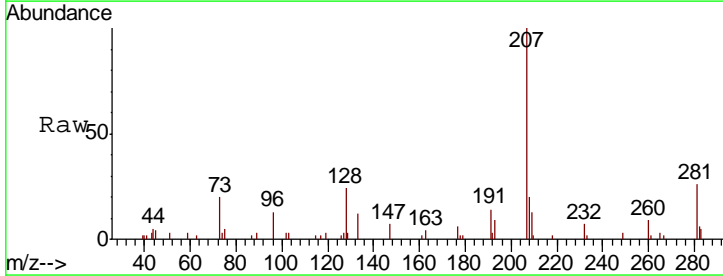
Instrument :  
 MSVOA\_N  
 ClientSampled :

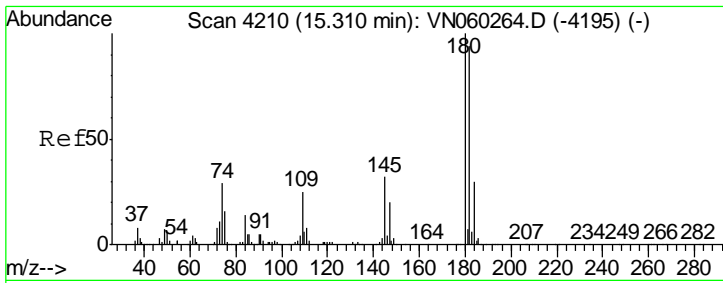
Tgt Ion	Resp	Lower	Upper
225	100		
223	117.8	31.3	93.9#
227	78.8	32.3	96.9



#95  
 Naphthalene  
 Concen: 0.283 ug/l  
 RT: 15.13 min Scan# 4154  
 Delta R.T. 0.00 min  
 Lab File: VN060371.D  
 Acq: 6 Mar 2020 11:19

Tgt Ion	Resp	Lower	Upper
128	100		
127	10.7	10.4	15.6
129	6.3	8.6	13.0#

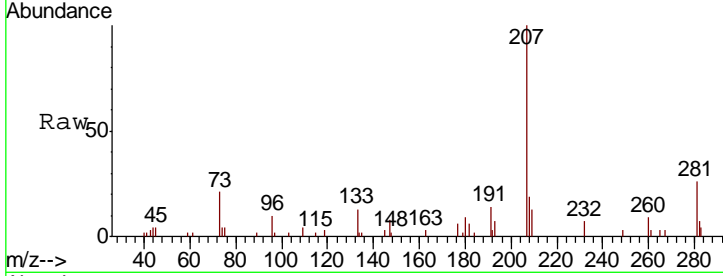




#96  
 1,2,3-Trichlorobenzene  
 Concen: 0.392 ug/l  
 RT: 15.31 min Scan# 4211  
 Delta R.T. 0.00 min  
 Lab File: VN060371.D  
 Acq: 6 Mar 2020 11:19

Instrument :  
 MSVOA\_N  
 ClientSampled :

Tot Ion	Resp	Lower	Upper
180	1210		
182	86.4	47.3	142.0
145	26.4	16.2	48.5



Abundance Ion 179.80 (179.50 to 180.50): V  
 Ion 181.80 (181.50 to 182.50): V  
 Ion 144.90 (144.60 to 145.60): V

