

Data Path : Z:\voasrv\HPCHEM1\MSVOA_N\Data\VN030822\
 Data File : VN071195.D
 Acq On : 08 Mar 2022 17:17
 Operator : JC\MD
 Sample : IBLK
 Misc : 5.0mL/MSVOA_N/WATER
 ALS Vial : 14 Sample Multiplier: 1

Instrument :
 MSVOA_N
 ClientSampleId :

Quant Time: Mar 09 04:03:56 2022
 Quant Method : Z:\voasrv\HPCHEM1\MSVOA_N\methods\82N030722W.M
 Quant Title : SW846 8260
 QLast Update : Tue Mar 08 06:52:46 2022
 Response via : Initial Calibration

Compound	R.T.	QIon	Response	Conc	Units	Dev(Min)

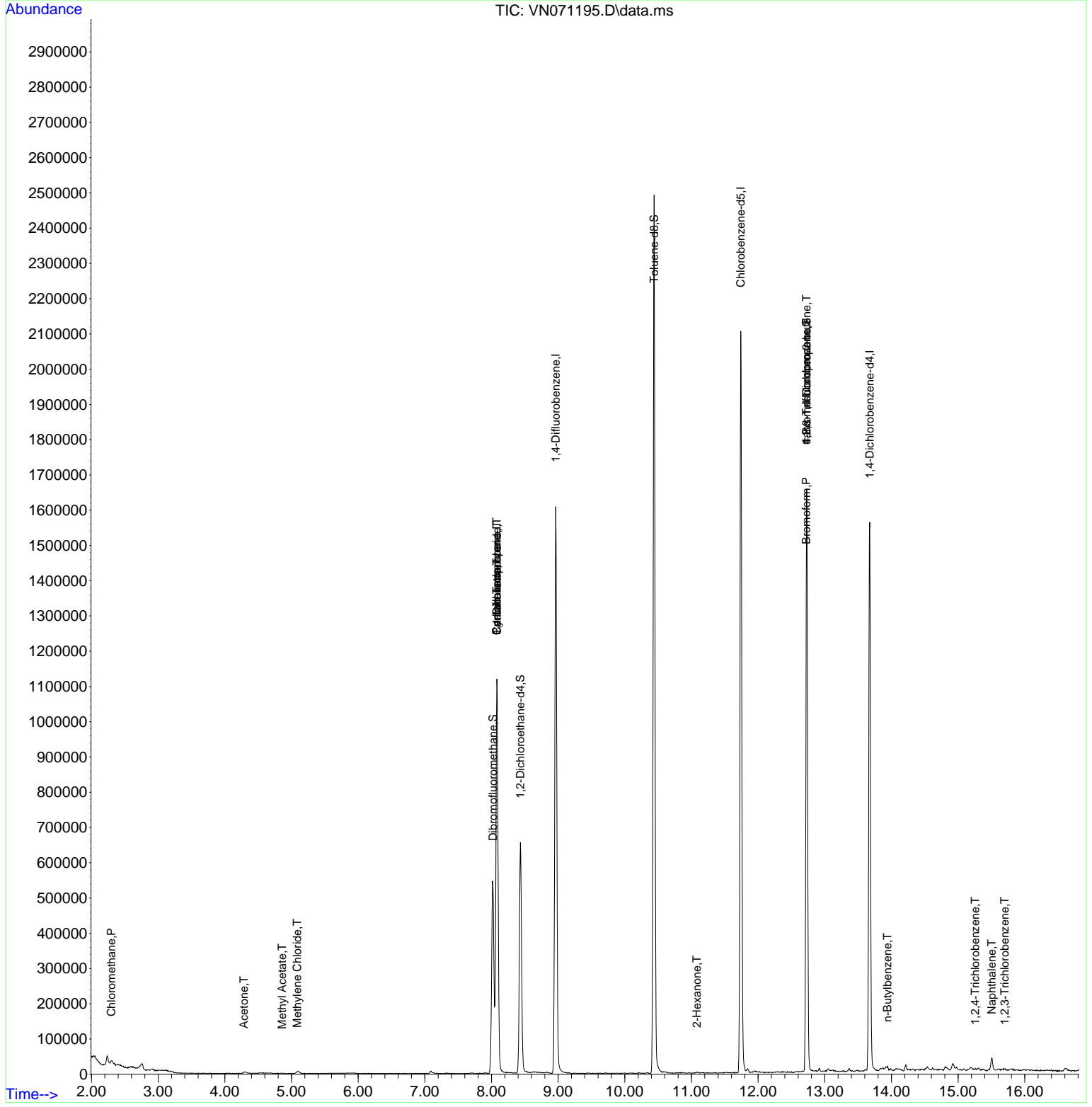
Internal Standards						
1) Pentafluorobenzene	8.080	168	862517	50.000	ug/l	0.00
34) 1,4-Difluorobenzene	8.963	114	1401652	50.000	ug/l	0.00
63) Chlorobenzene-d5	11.739	117	1230380	50.000	ug/l	0.00
72) 1,4-Dichlorobenzene-d4	13.674	152	442112	50.000	ug/l	0.00
System Monitoring Compounds						
33) 1,2-Dichloroethane-d4	8.433	65	544462	46.058	ug/l	0.00
Spiked Amount	50.000	Range 61 - 141	Recovery	=	92.120%	
35) Dibromofluoromethane	8.022	113	408647	46.201	ug/l	0.00
Spiked Amount	50.000	Range 69 - 133	Recovery	=	92.400%	
50) Toluene-d8	10.439	98	1690398	47.467	ug/l	0.00
Spiked Amount	50.000	Range 65 - 126	Recovery	=	94.940%	
62) 4-Bromofluorobenzene	12.727	95	591326	49.035	ug/l	0.00
Spiked Amount	50.000	Range 58 - 135	Recovery	=	98.080%	
Target Compounds						
						Qvalue
3) Chloromethane	2.298	50	3080	0.208	ug/l	92
5) Bromomethane	2.851	94	1496	Below Cal	#	68
16) Acetone	4.287	43	1840	0.320	ug/l	96
18) Methyl Acetate	4.857	43	1885	0.591	ug/l #	51
20) Methylene Chloride	5.086	84	4978	0.852	ug/l #	75
31) Cyclohexane	8.080	56	17426	0.923	ug/l #	1
36) 1,1-Dichloropropene	8.080	75	69689	4.918	ug/l #	49
38) Carbon Tetrachloride	8.080	117	84001	6.128	ug/l #	16
59) 2-Hexanone	11.080	43	3230	0.262	ug/l	68
71) Bromoform	12.721	173	2786	0.379	ug/l #	29
75) 1,1,2,2-Tetrachloroethane	12.833	83	373	Below Cal	#	70
76) 1,2,3-Trichloropropane	12.727	75	301289	26.809	ug/l #	1
81) trans-1,4-Dichloro-2-b...	12.727	75	301289	73.667	ug/l #	5
89) n-Butylbenzene	13.939	91	5866	0.242	ug/l #	80
93) 1,2,4-Trichlorobenzene	15.256	180	1203	3.145	ug/l #	86
95) Naphthalene	15.503	128	35545	6.644	ug/l	97
96) 1,2,3-Trichlorobenzene	15.698	180	1215	2.897	ug/l #	77

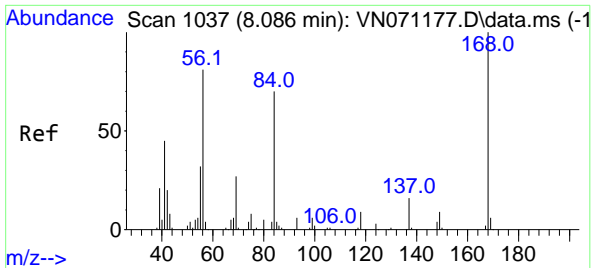
(#) = qualifier out of range (m) = manual integration (+) = signals summed

Data Path : Z:\voasrv\HPCHEM1\MSVOA_N\Data\VN030822\
 Data File : VN071195.D
 Acq On : 08 Mar 2022 17:17
 Operator : JC\MD
 Sample : IBLK
 Misc : 5.0mL/MSVOA_N/WATER
 ALS Vial : 14 Sample Multiplier: 1

Instrument :
 MSVOA_N
 ClientSampleId :

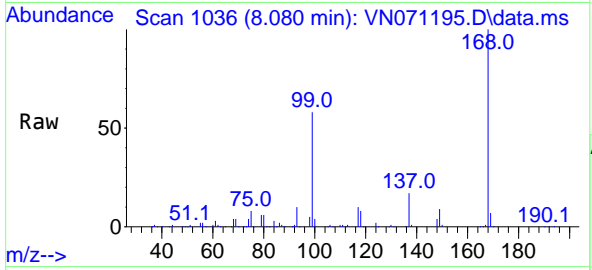
Quant Time: Mar 09 04:03:56 2022
 Quant Method : Z:\voasrv\HPCHEM1\MSVOA_N\methods\82N030722W.M
 Quant Title : SW846 8260
 QLast Update : Tue Mar 08 06:52:46 2022
 Response via : Initial Calibration



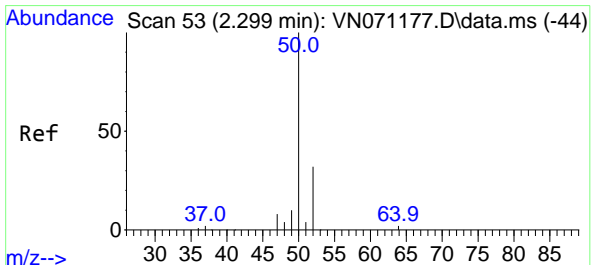
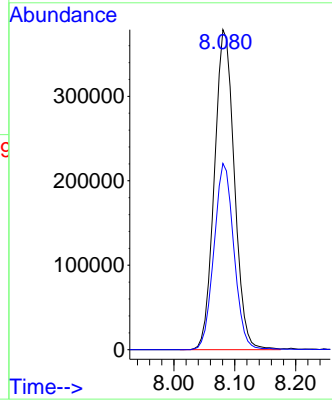
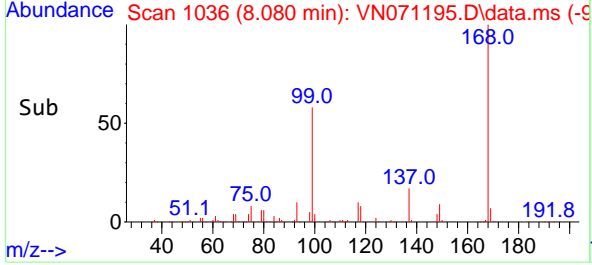


#1
 Pentafluorobenzene
 Concen: 50.000 ug/l
 RT: 8.080 min Scan# 10
 Delta R.T. -0.006 min
 Lab File: VN071195.D
 Acq: 08 Mar 2022 17:17

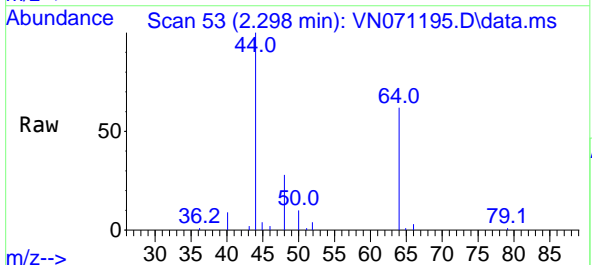
Instrument :
 MSVOA_N
 ClientSampleId :



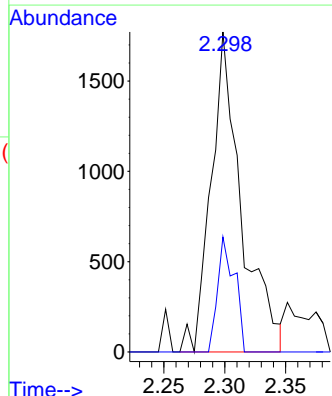
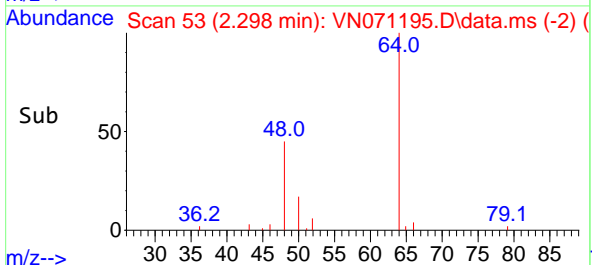
Tgt Ion:168 Resp: 862517
 Ion Ratio Lower Upper
 168 100
 99 58.2 41.3 61.9

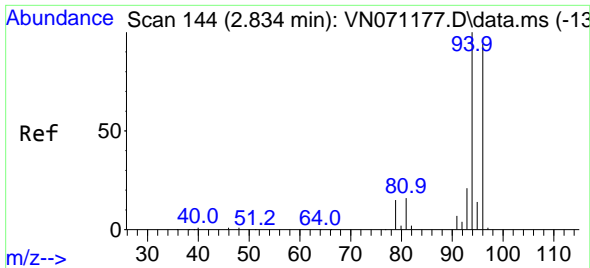


#3
 Chloromethane
 Concen: 0.208 ug/l
 RT: 2.298 min Scan# 53
 Delta R.T. -0.001 min
 Lab File: VN071195.D
 Acq: 08 Mar 2022 17:17



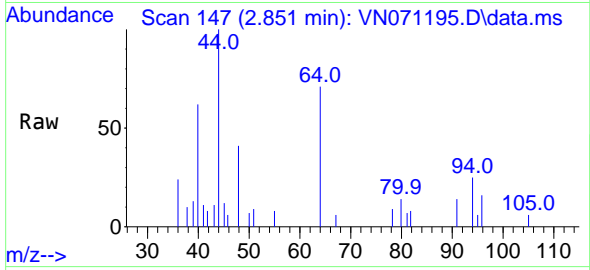
Tgt Ion: 50 Resp: 3080
 Ion Ratio Lower Upper
 50 100
 52 35.9 25.4 38.0



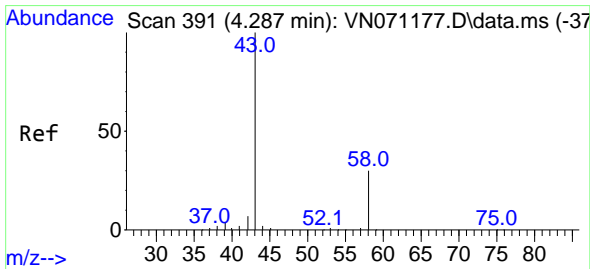
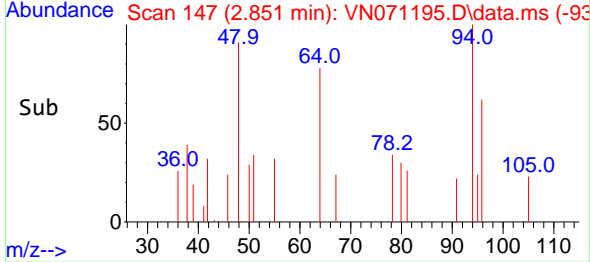
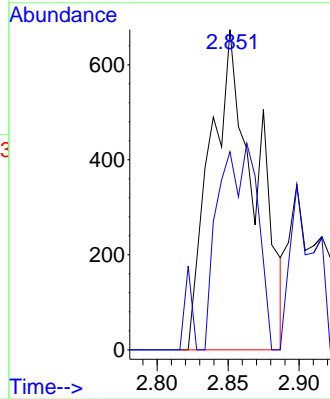


#5
 Bromomethane
 Concen: Below Cal
 RT: 2.851 min Scan# 147
 Delta R.T. 0.017 min
 Lab File: VN071195.D
 Acq: 08 Mar 2022 17:17

Instrument :
 MSVOA_N
 ClientSampleId :

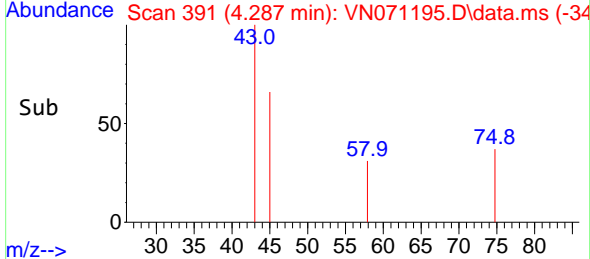
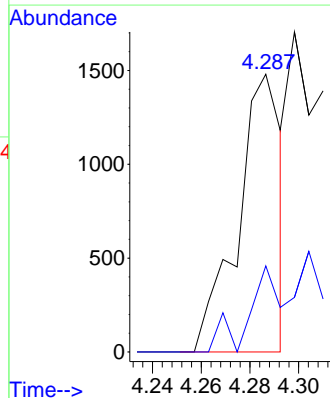
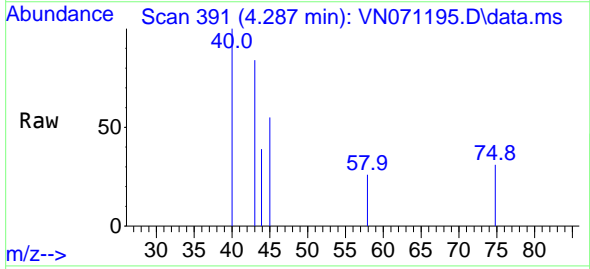


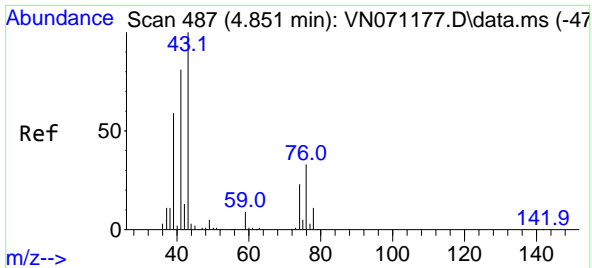
Tgt Ion: 94 Resp: 1496
 Ion Ratio Lower Upper
 94 100
 96 61.9 73.8 110.8#



#16
 Acetone
 Concen: 0.320 ug/l
 RT: 4.287 min Scan# 391
 Delta R.T. -0.000 min
 Lab File: VN071195.D
 Acq: 08 Mar 2022 17:17

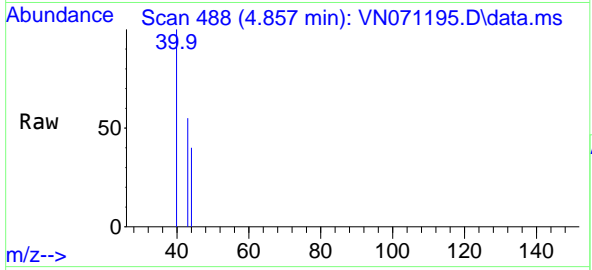
Tgt Ion: 43 Resp: 1840
 Ion Ratio Lower Upper
 43 100
 58 31.0 23.1 34.7



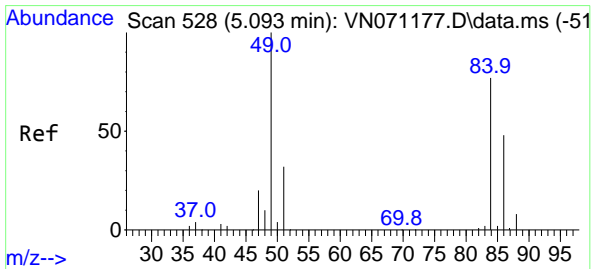
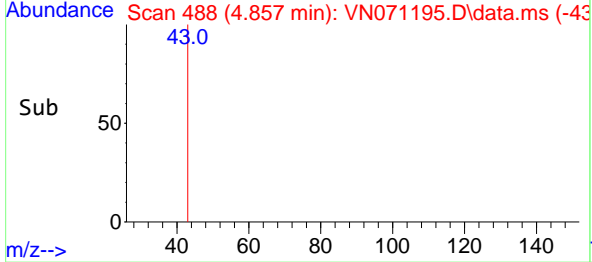
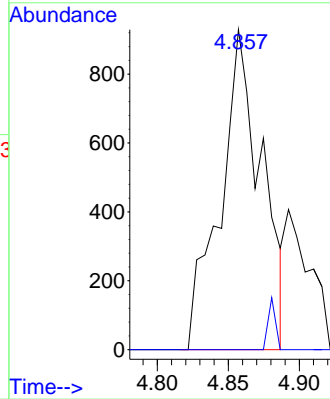


#18
 Methyl Acetate
 Concen: 0.591 ug/l
 RT: 4.857 min Scan# 41
 Delta R.T. 0.006 min
 Lab File: VN071195.D
 Acq: 08 Mar 2022 17:17

Instrument :
 MSVOA_N
 ClientSampleId :

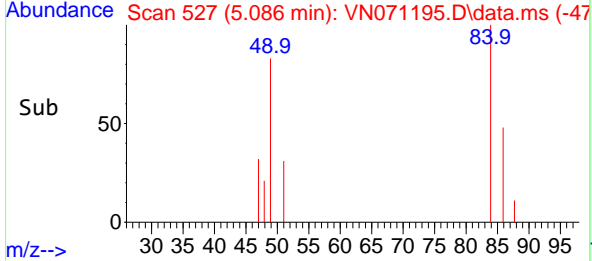
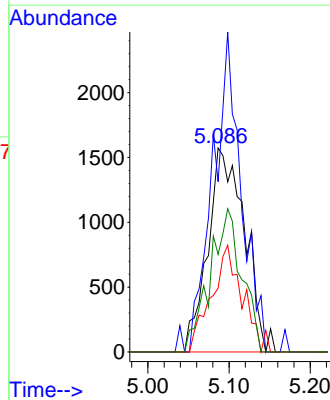
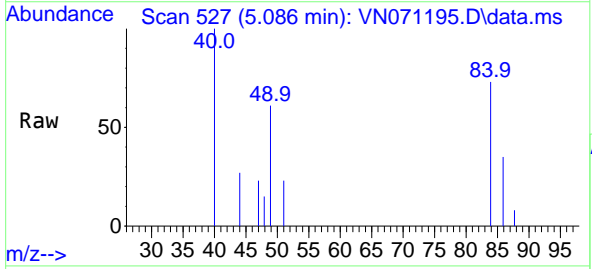


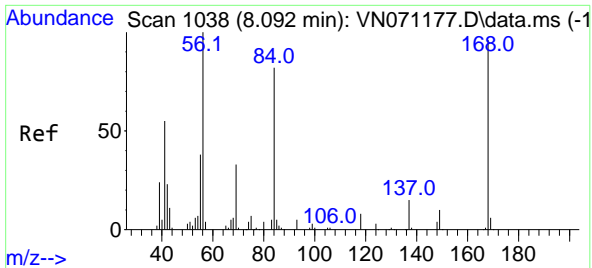
Tgt Ion: 43 Resp: 1885
 Ion Ratio Lower Upper
 43 100
 74 0.0 19.4 29.2#



#20
 Methylene Chloride
 Concen: 0.852 ug/l
 RT: 5.086 min Scan# 527
 Delta R.T. -0.007 min
 Lab File: VN071195.D
 Acq: 08 Mar 2022 17:17

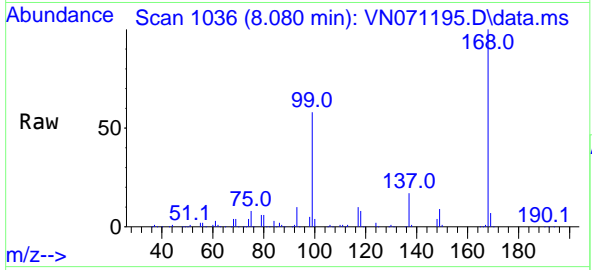
Tgt Ion: 84 Resp: 4978
 Ion Ratio Lower Upper
 84 100
 49 83.5 93.5 140.3#
 51 31.3 29.4 44.2
 86 47.9 53.0 79.4#



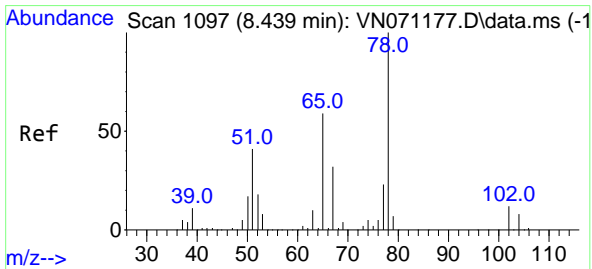
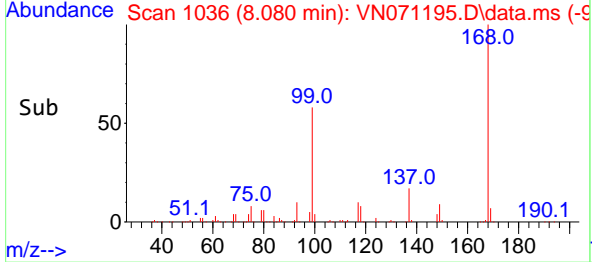
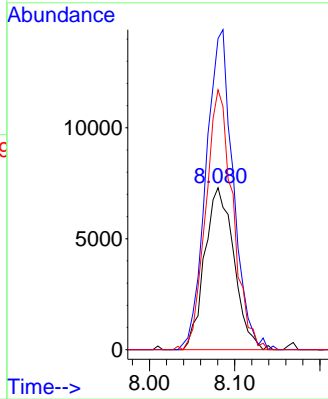


#31
 Cyclohexane
 Concen: 0.923 ug/l
 RT: 8.080 min Scan# 1036
 Delta R.T. -0.012 min
 Lab File: VN071195.D
 Acq: 08 Mar 2022 17:17

Instrument :
 MSVOA_N
 ClientSampleId :

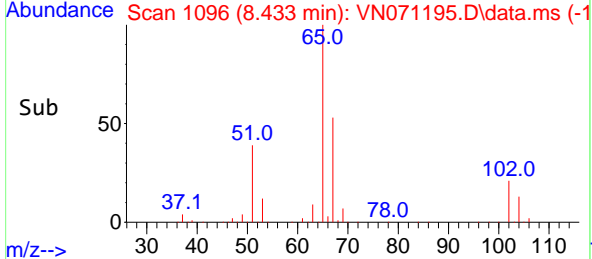
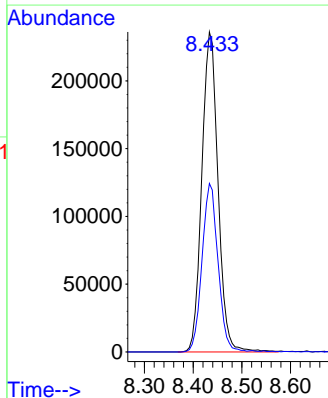
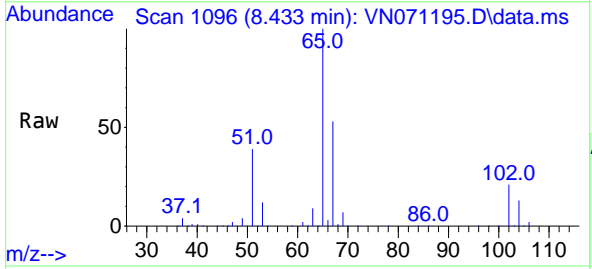


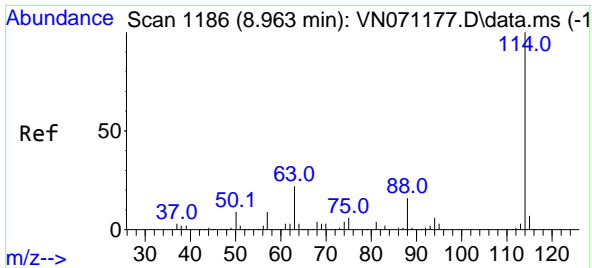
Tgt Ion: 56 Resp: 17426
 Ion Ratio Lower Upper
 56 100
 69 192.1 27.1 40.7#
 84 160.5 73.4 110.0#



#33
 1,2-Dichloroethane-d4
 Concen: 46.058 ug/l
 RT: 8.433 min Scan# 1096
 Delta R.T. -0.006 min
 Lab File: VN071195.D
 Acq: 08 Mar 2022 17:17

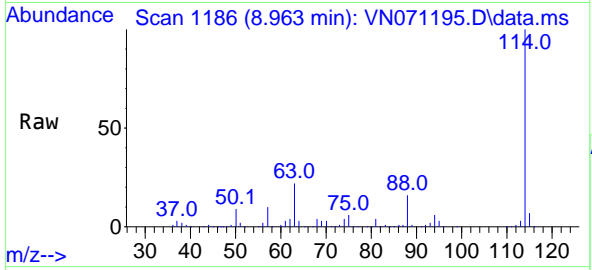
Tgt Ion: 65 Resp: 544462
 Ion Ratio Lower Upper
 65 100
 67 52.0 0.0 103.0





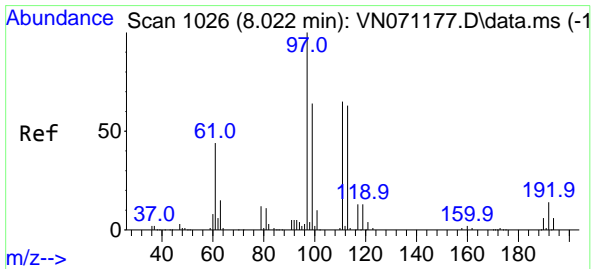
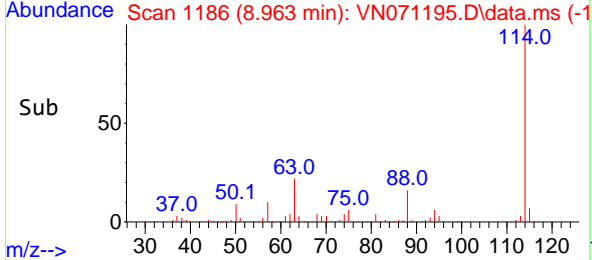
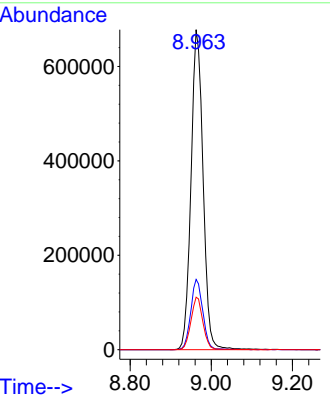
#34
 1,4-Difluorobenzene
 Concen: 50.000 ug/l
 RT: 8.963 min Scan# 1186
 Delta R.T. -0.000 min
 Lab File: VN071195.D
 Acq: 08 Mar 2022 17:17

Instrument : MSVOA_N
 ClientSampleId :

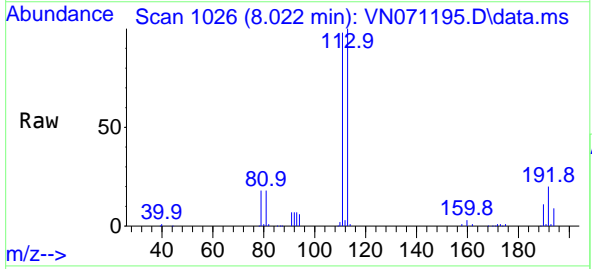


Tgt Ion:114 Resp: 1401652

Ion	Ratio	Lower	Upper
114	100		
63	21.9	0.0	37.8
88	16.4	0.0	27.4

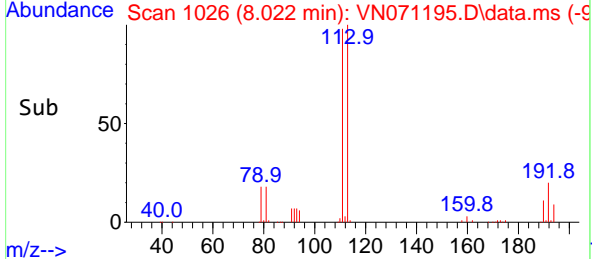
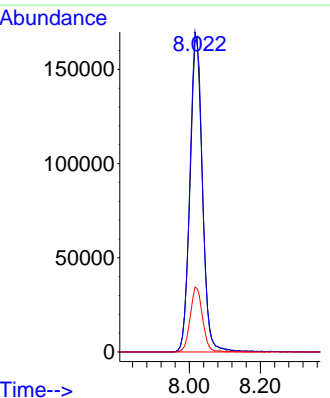


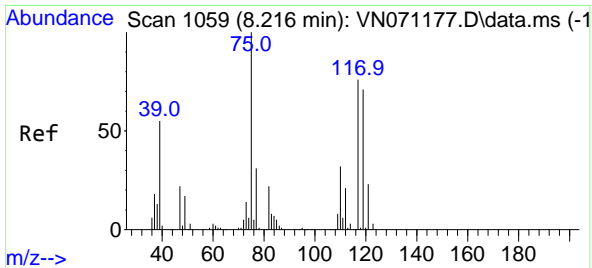
#35
 Dibromofluoromethane
 Concen: 46.201 ug/l
 RT: 8.022 min Scan# 1026
 Delta R.T. -0.000 min
 Lab File: VN071195.D
 Acq: 08 Mar 2022 17:17



Tgt Ion:113 Resp: 408647

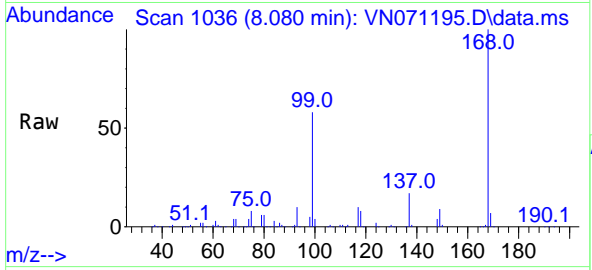
Ion	Ratio	Lower	Upper
113	100		
111	101.8	82.2	123.2
192	20.3	16.9	25.3



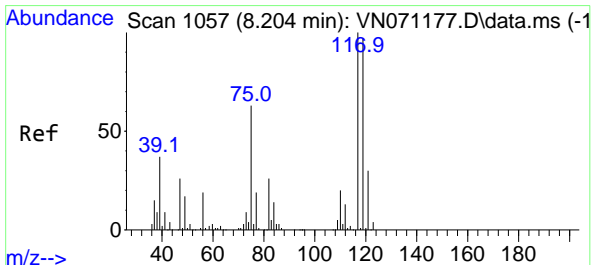
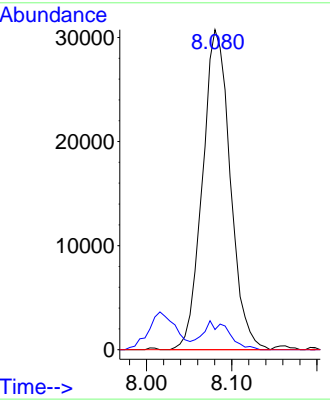
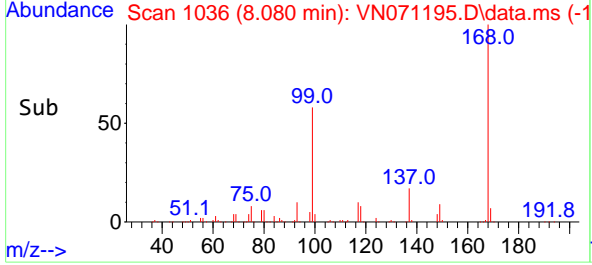


#36
 1,1-Dichloropropene
 Concen: 4.918 ug/l
 RT: 8.080 min Scan# 1036
 Delta R.T. -0.135 min
 Lab File: VN071195.D
 Acq: 08 Mar 2022 17:17

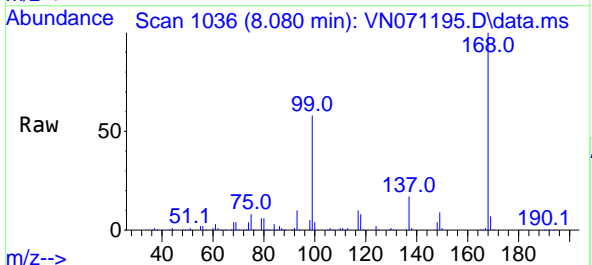
Instrument : MSVOA_N
 ClientSampleId :



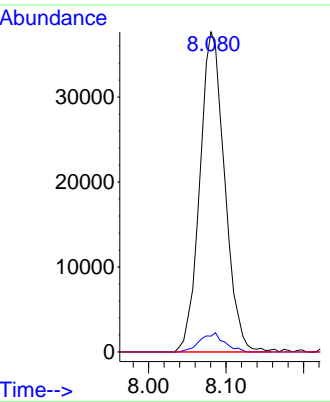
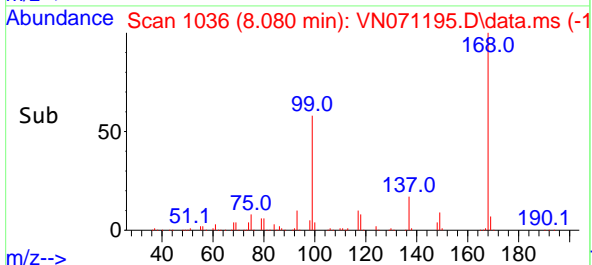
Tgt Ion: 75 Resp: 69689
 Ion Ratio Lower Upper
 75 100
 110 8.6 18.4 55.2#
 77 0.0 24.4 36.6#

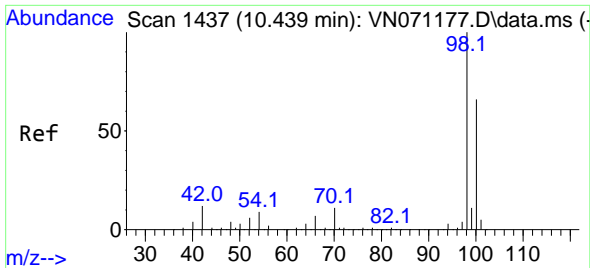


#38
 Carbon Tetrachloride
 Concen: 6.128 ug/l
 RT: 8.080 min Scan# 1036
 Delta R.T. -0.124 min
 Lab File: VN071195.D
 Acq: 08 Mar 2022 17:17



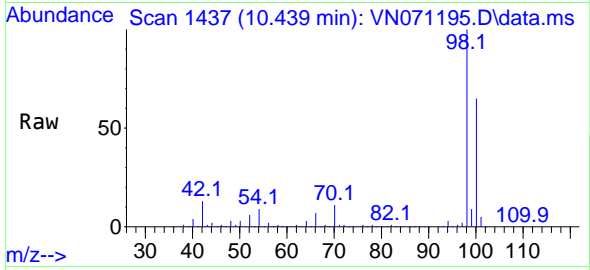
Tgt Ion: 117 Resp: 84001
 Ion Ratio Lower Upper
 117 100
 119 5.0 76.1 114.1#
 121 0.0 24.2 36.2#



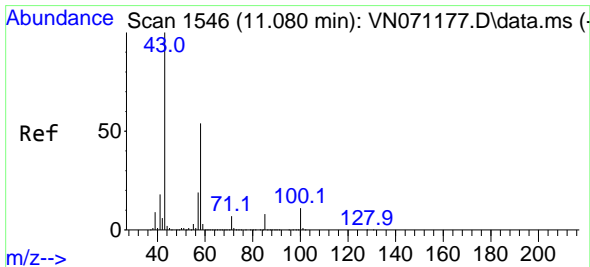
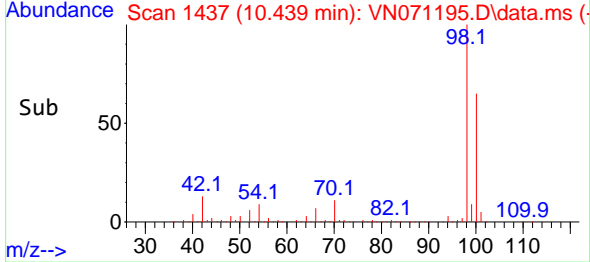
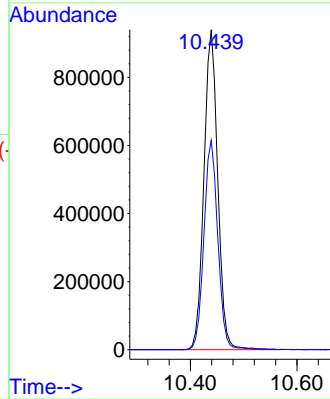


#50
 Toluene-d8
 Concen: 47.467 ug/l
 RT: 10.439 min Scan# 14
 Delta R.T. 0.000 min
 Lab File: VN071195.D
 Acq: 08 Mar 2022 17:17

Instrument :
 MSVOA_N
 ClientSampleId :

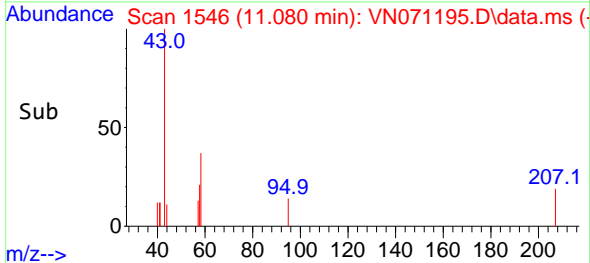
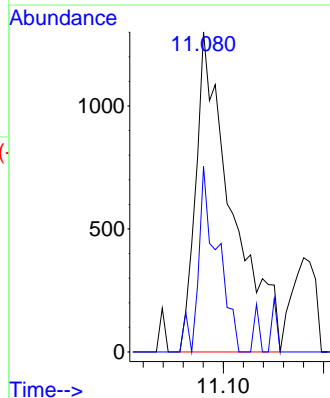
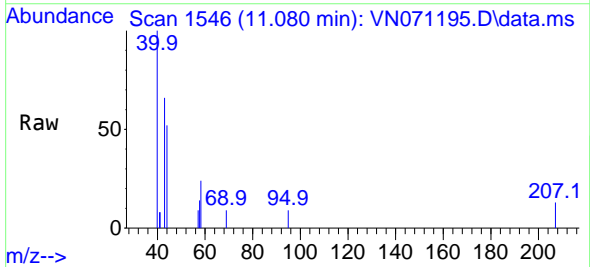


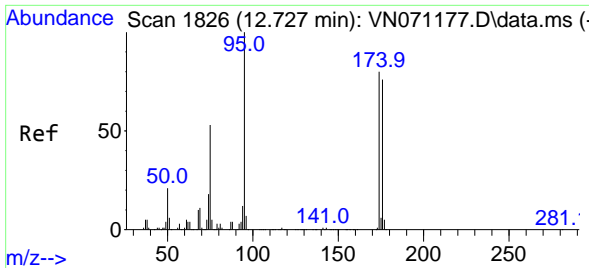
Tgt Ion: 98 Resp: 1690398
 Ion Ratio Lower Upper
 98 100
 100 65.7 50.4 75.6



#59
 2-Hexanone
 Concen: 0.262 ug/l
 RT: 11.080 min Scan# 1546
 Delta R.T. 0.000 min
 Lab File: VN071195.D
 Acq: 08 Mar 2022 17:17

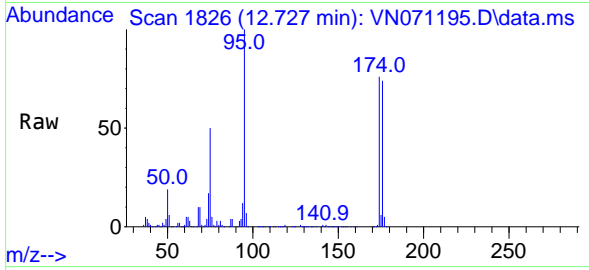
Tgt Ion: 43 Resp: 3230
 Ion Ratio Lower Upper
 43 100
 58 31.1 26.9 80.7





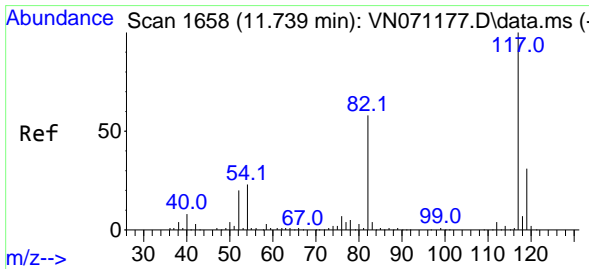
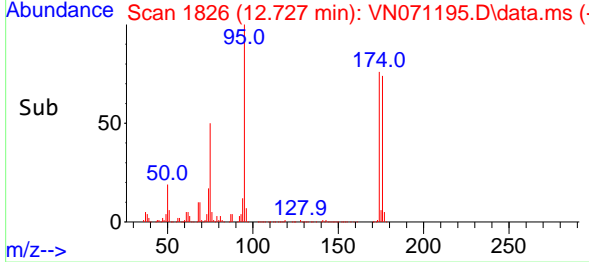
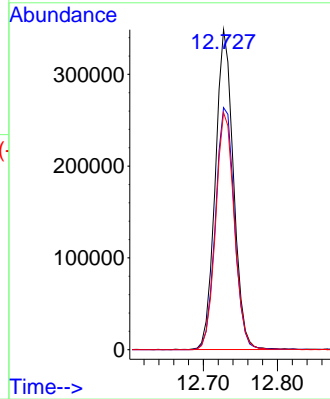
#62
 4-Bromofluorobenzene
 Concen: 49.035 ug/l
 RT: 12.727 min Scan# 1826
 Delta R.T. 0.000 min
 Lab File: VN071195.D
 Acq: 08 Mar 2022 17:17

Instrument : MSVOA_N
 ClientSampleId :



Tgt Ion: 95 Resp: 591326

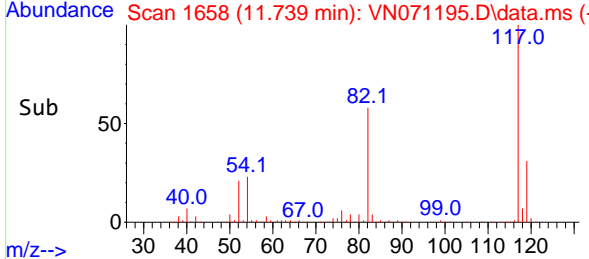
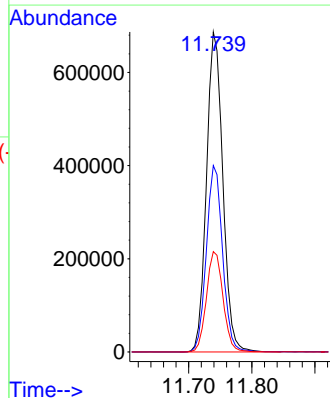
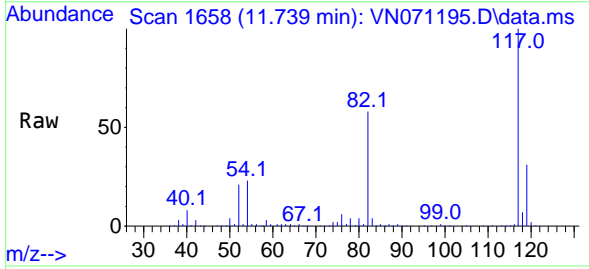
Ion	Ratio	Lower	Upper
95	100		
174	79.2	0.0	187.2
176	76.1	0.0	181.4

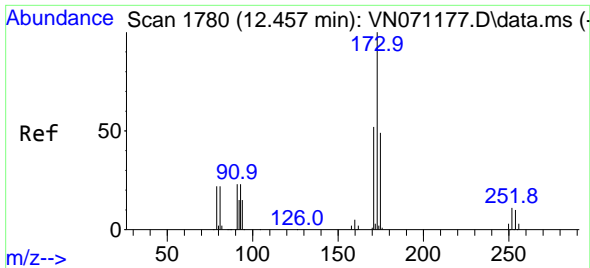


#63
 Chlorobenzene-d5
 Concen: 50.000 ug/l
 RT: 11.739 min Scan# 1658
 Delta R.T. -0.000 min
 Lab File: VN071195.D
 Acq: 08 Mar 2022 17:17

Tgt Ion: 117 Resp: 1230380

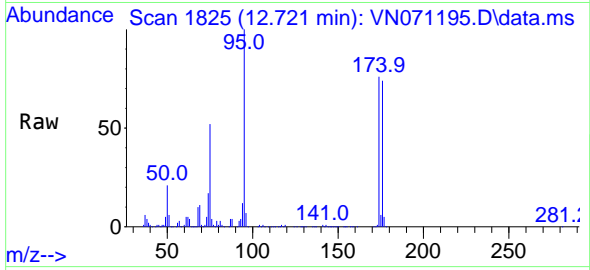
Ion	Ratio	Lower	Upper
117	100		
82	58.2	42.4	63.6
119	31.3	25.4	38.2



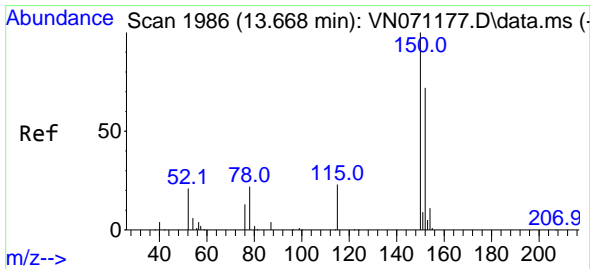
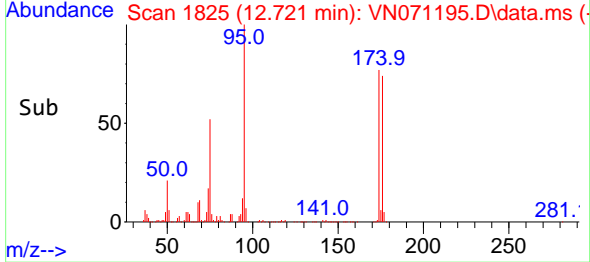
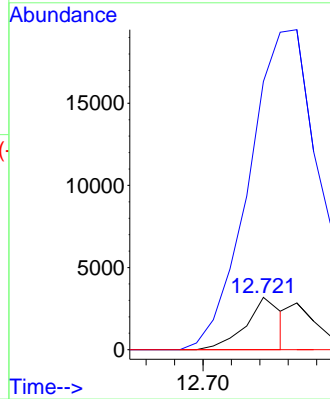


#71
 Bromoform
 Concen: 0.379 ug/l
 RT: 12.721 min Scan# 1825
 Delta R.T. 0.264 min
 Lab File: VN071195.D
 Acq: 08 Mar 2022 17:17

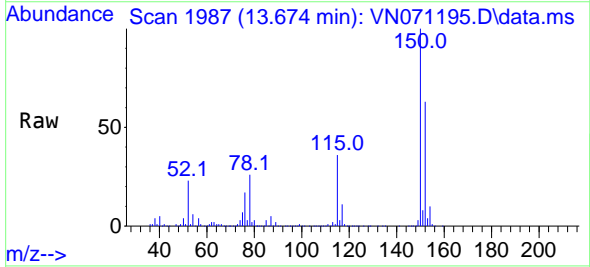
Instrument :
 MSVOA_N
 ClientSampleId :



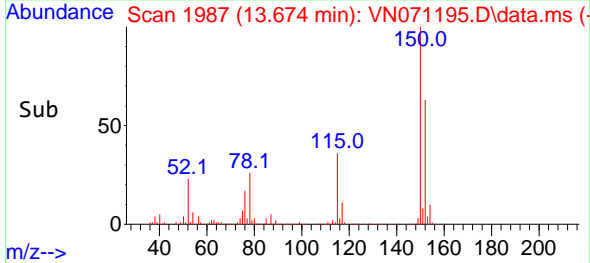
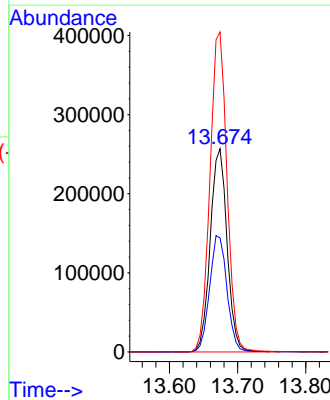
Tgt Ion:173 Resp: 2786
 Ion Ratio Lower Upper
 173 100
 175 0.0 24.2 72.6#
 254 0.0 0.0 0.0

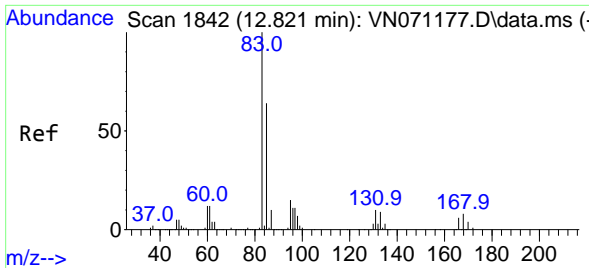


#72
 1,4-Dichlorobenzene-d4
 Concen: 50.000 ug/l
 RT: 13.674 min Scan# 1987
 Delta R.T. 0.006 min
 Lab File: VN071195.D
 Acq: 08 Mar 2022 17:17



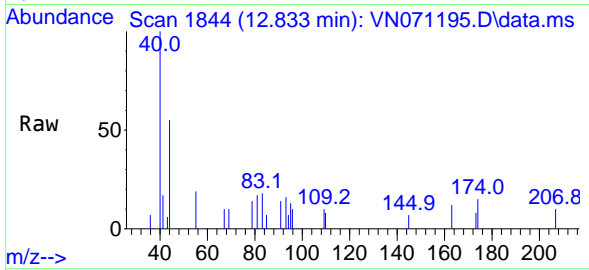
Tgt Ion:152 Resp: 442112
 Ion Ratio Lower Upper
 152 100
 115 59.1 27.5 82.5
 150 159.2 0.0 344.4



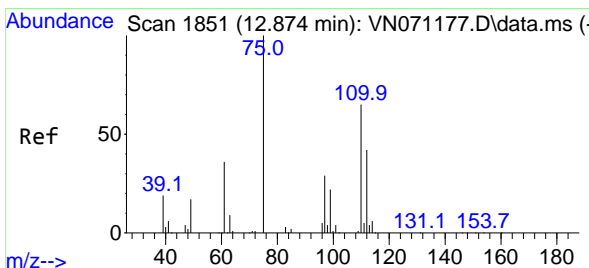
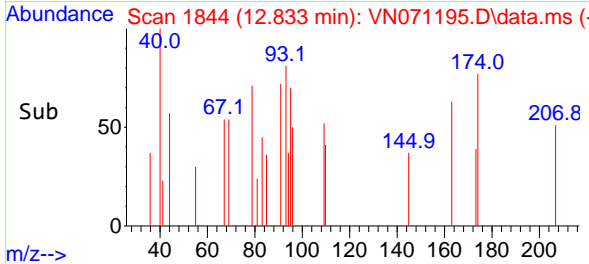
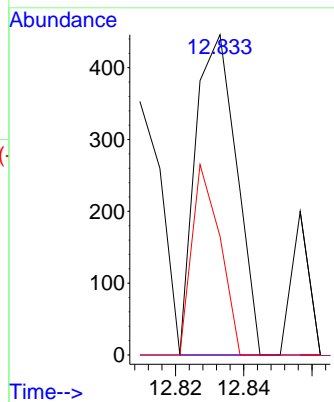


#75
 1,1,2,2-Tetrachloroethane
 Concen: Below Cal
 RT: 12.833 min Scan# 1844
 Delta R.T. 0.012 min
 Lab File: VN071195.D
 Acq: 08 Mar 2022 17:17

Instrument :
 MSVOA_N
 ClientSampleId :

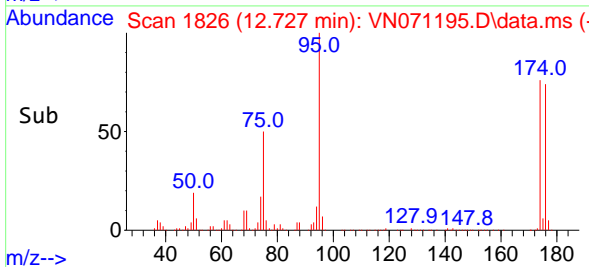
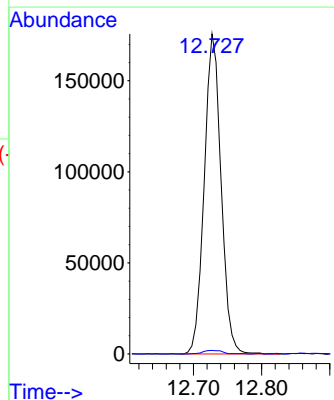
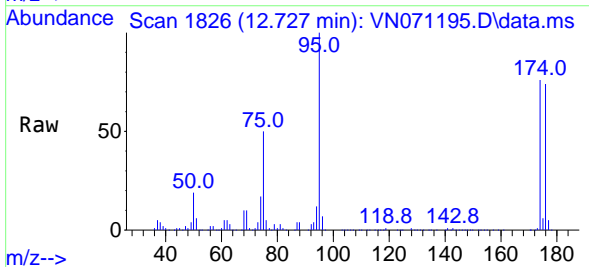


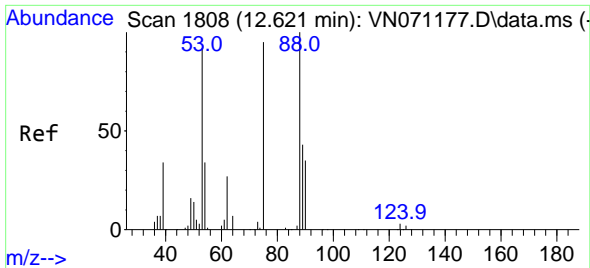
Tgt Ion: 83 Resp: 373
 Ion Ratio Lower Upper
 83 100
 131 0.0 5.5 16.5#
 85 40.8 32.4 97.2



#76
 1,2,3-Trichloropropane
 Concen: 26.809 ug/l
 RT: 12.727 min Scan# 1826
 Delta R.T. -0.147 min
 Lab File: VN071195.D
 Acq: 08 Mar 2022 17:17

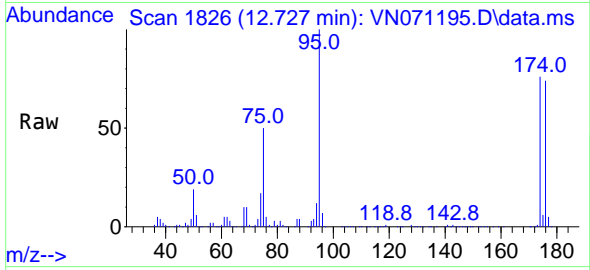
Tgt Ion: 75 Resp: 301289
 Ion Ratio Lower Upper
 75 100
 77 1.4 82.6 247.8#



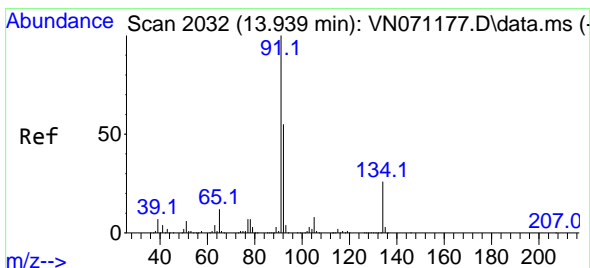
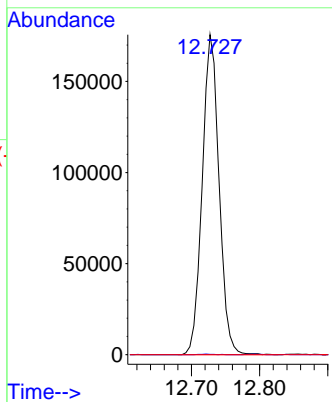
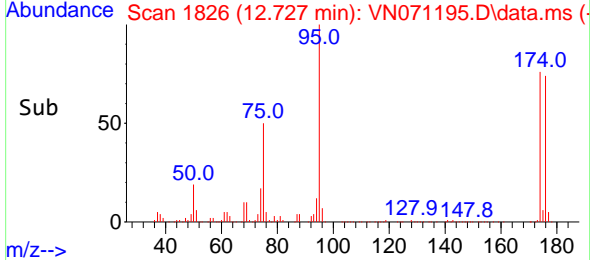


#81
 trans-1,4-Dichloro-2-butene
 Concen: 73.667 ug/l
 RT: 12.727 min Scan# 11
 Delta R.T. 0.106 min
 Lab File: VN071195.D
 Acq: 08 Mar 2022 17:17

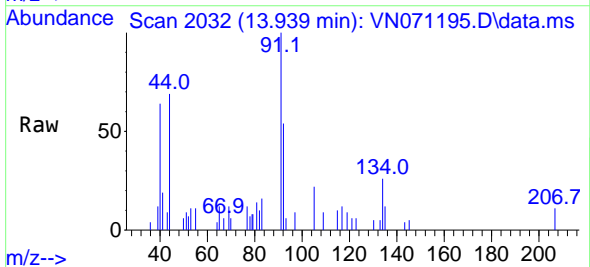
Instrument :
 MSVOA_N
 ClientSampleId :



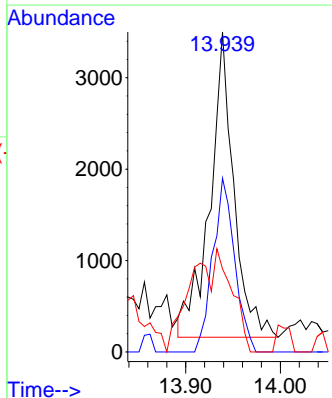
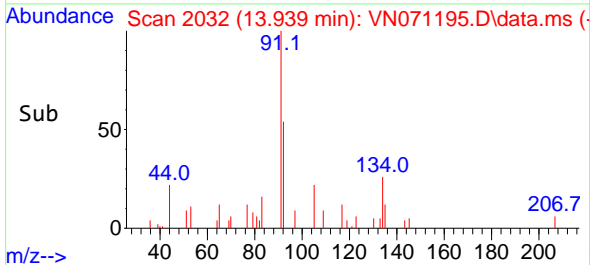
Tgt Ion: 75 Resp: 301289
 Ion Ratio Lower Upper
 75 100
 53 0.1 90.5 135.7#
 89 0.0 38.2 57.4#

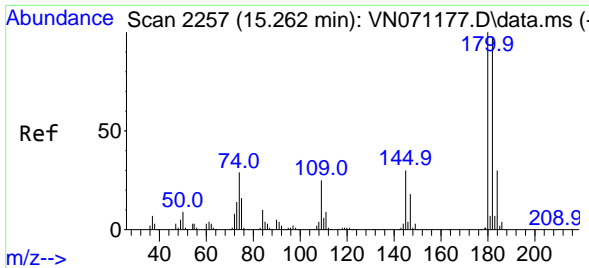


#89
 n-Butylbenzene
 Concen: 0.242 ug/l
 RT: 13.939 min Scan# 2032
 Delta R.T. -0.000 min
 Lab File: VN071195.D
 Acq: 08 Mar 2022 17:17



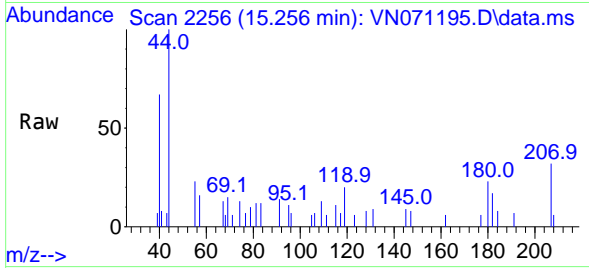
Tgt Ion: 91 Resp: 5866
 Ion Ratio Lower Upper
 91 100
 92 52.0 25.4 76.0
 134 0.0 13.6 40.8#



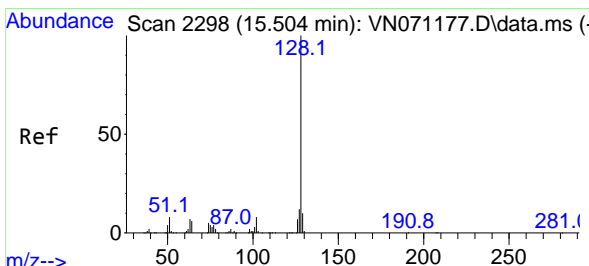
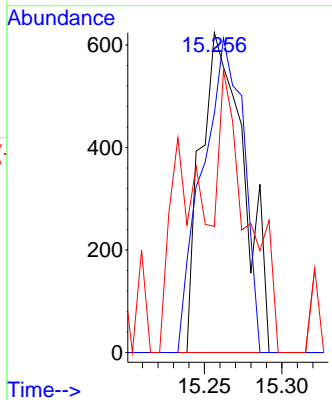
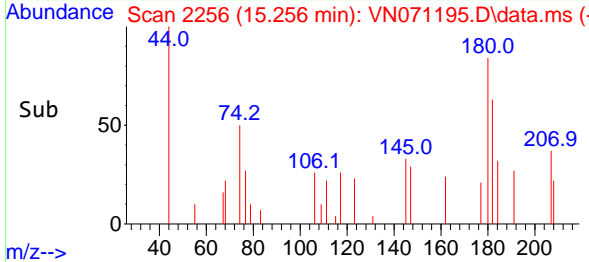


#93
 1,2,4-Trichlorobenzene
 Concen: 3.145 ug/l
 RT: 15.256 min Scan# 21
 Delta R.T. -0.006 min
 Lab File: VN071195.D
 Acq: 08 Mar 2022 17:17

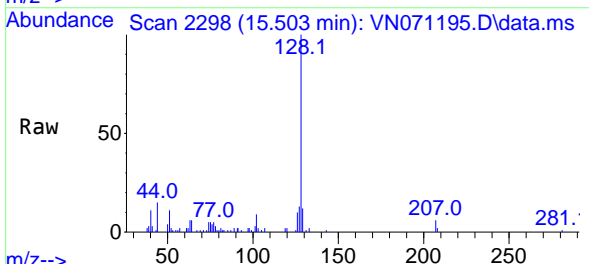
Instrument :
 MSVOA_N
 ClientSampleId :



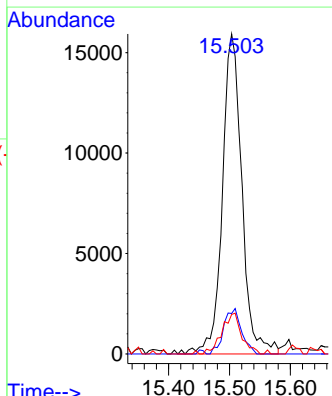
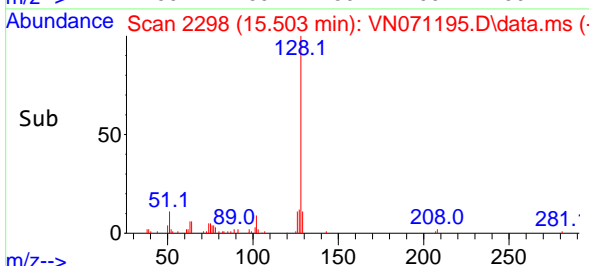
Tgt Ion:180 Resp: 1203
 Ion Ratio Lower Upper
 180 100
 182 93.9 48.3 144.9
 145 57.2 14.5 43.5#

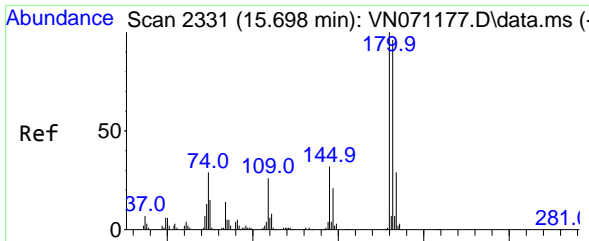


#95
 Naphthalene
 Concen: 6.644 ug/l
 RT: 15.503 min Scan# 2298
 Delta R.T. -0.001 min
 Lab File: VN071195.D
 Acq: 08 Mar 2022 17:17



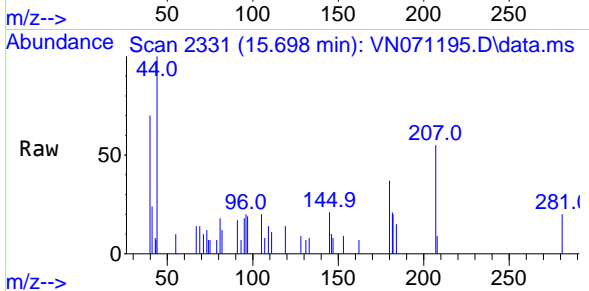
Tgt Ion:128 Resp: 35545
 Ion Ratio Lower Upper
 128 100
 127 12.9 10.5 15.7
 129 12.8 8.7 13.1





#96
 1,2,3-Trichlorobenzene
 Concen: 2.897 ug/l
 RT: 15.698 min Scan# 21
 Delta R.T. -0.000 min
 Lab File: VN071195.D
 Acq: 08 Mar 2022 17:17

Instrument :
 MSVOA_N
 ClientSampleId :



Tgt Ion:180 Resp: 1215

Ion	Ratio	Lower	Upper
180	100		
182	98.3	47.4	142.2
145	76.8	15.0	45.1#

