

Data Path : Z:\voasrv\HPCHEM1\MSVOA\_N\Data\VN030921\  
 Data File : VN066158.D  
 Acq On : 9 Mar 2021 16:41  
 Operator : JC/MD  
 Sample : M1557-01  
 Misc : 5.00mL/MSVOA\_N/WATER  
 ALS Vial : 14 Sample Multiplier: 1

Instrument :  
 MSVOA\_N  
 ClientSampled :  
 PT-VOA-WP

Quant Time: Mar 10 03:19:18 2021  
 Quant Method : Z:\voasrv\HPCHEM1\MSVOA\_N\methods\82N030921W.M  
 Quant Title : SW846 8260  
 QLast Update : Tue Mar 09 14:48:21 2021  
 Response via : Initial Calibration

Compound	R.T.	QIon	Response	Conc	Units	Dev(Min)
-----						
Internal Standards						
1) Pentafluorobenzene	7.584	168	189291	50.00	ug/l	0.00
34) 1,4-Difluorobenzene	8.512	114	325016	50.00	ug/l	0.00
63) Chlorobenzene-d5	11.347	117	304871	50.00	ug/l	0.00
72) 1,4-Dichlorobenzene-d4	13.286	152	147023	50.00	ug/l	0.00
System Monitoring Compounds						
33) 1,2-Dichloroethane-d4	7.949	65	168284	47.11	ug/l	0.00
Spiked Amount	50.000	Range 61 - 141	Recovery =	94.22%		
35) Dibromofluoromethane	7.509	113	105978	47.79	ug/l	0.00
Spiked Amount	50.000	Range 69 - 133	Recovery =	95.58%		
50) Toluene-d8	10.028	98	429085	49.19	ug/l	0.00
Spiked Amount	50.000	Range 65 - 126	Recovery =	98.38%		
62) 4-Bromofluorobenzene	12.345	95	156160	48.08	ug/l	0.00
Spiked Amount	50.000	Range 58 - 135	Recovery =	96.16%		
Target Compounds						
						Qvalue
4) Vinyl Chloride	2.148	62	290883	85.84	ug/l	99
6) Chloroethane	2.660	64	81065	43.49	ug/l	98
19) Methyl tert-butyl Ether	4.945	73	570331	65.48	ug/l #	91
20) Methylene Chloride	4.455	84	136231	51.20	ug/l #	73
24) 1,1-Dichloroethane	5.750	63	145060	26.64	ug/l	94
25) 2-Butanone	6.745	43	338177	120.92	ug/l #	82
30) Chloroform	7.287	83	329612	67.49	ug/l	99
32) 1,1,1-Trichloroethane	7.480	97	87440	21.45	ug/l	95
38) Carbon Tetrachloride	7.692	117	223391	69.40	ug/l	98
40) Benzene	7.963	78	824513	76.29	ug/l	100
44) Trichloroethene	8.767	130	127091	49.64	ug/l	89
45) 1,2-Dichloropropane	9.049	63	157815	48.06	ug/l	97
46) Dibromomethane	9.140	93	160107	90.29	ug/l	90
51) 4-Methyl-2-Pentanone	9.920	43	892303	160.50	ug/l	89
52) Toluene	10.092	92	280950	44.06	ug/l	98
55) 1,1,2-Trichloroethane	10.500	97	161624	65.00	ug/l	94
61) 1,2-Dibromoethane	10.945	107	273428	107.59	ug/l	100
64) Tetrachloroethene	10.570	164	174371	69.37	ug/l	96
66) 1,1,1,2-Tetrachloroethane	11.452	131	167170	70.09	ug/l	100
67) Ethyl Benzene	11.452	91	982637	81.56	ug/l	96
68) m/p-Xylenes	11.562	106	210018	48.37	ug/l	93
69) o-Xylene	11.889	106	612938	146.63	ug/l	94
70) Styrene	11.905	104	557372	81.23	ug/l #	87
71) Bromoform	12.069	173	116882	64.99	ug/l #	99
75) 1,1,2,2-Tetrachloroethane	12.447	83	500380	122.07	ug/l	98
76) 1,2,3-Trichloropropane	12.498	75	279280	63.38	ug/l #	100
80) 1,3,5-Trimethylbenzene	12.678	105	480047	49.59	ug/l	99
84) 1,2,4-Trimethylbenzene	12.983	105	493187	51.80	ug/l	100
87) 1,3-Dichlorobenzene	13.225	146	407476	84.29	ug/l	97
88) 1,4-Dichlorobenzene	13.305	146	472605	96.90	ug/l	98
91) 1,2-Dichlorobenzene	13.595	146	85822	17.87	ug/l	97
92) 1,2-Dibromo-3-Chloropr...	14.212	75	114802	110.20	ug/l	78
93) 1,2,4-Trichlorobenzene	14.850	180	153061	49.68	ug/l	99
95) Naphthalene	15.067	128	968729	106.77	ug/l	99

Data Path : Z:\voasrv\HPCHEM1\MSVOA\_N\Data\VN030921\  
Data File : VN066158.D  
Acq On : 9 Mar 2021 16:41  
Operator : JC/MD  
Sample : M1557-01  
Misc : 5.00mL/MSVOA\_N/WATER  
ALS Vial : 14 Sample Multiplier: 1

Instrument :  
MSVOA\_N  
ClientSampleId :  
PT-VOA-WP

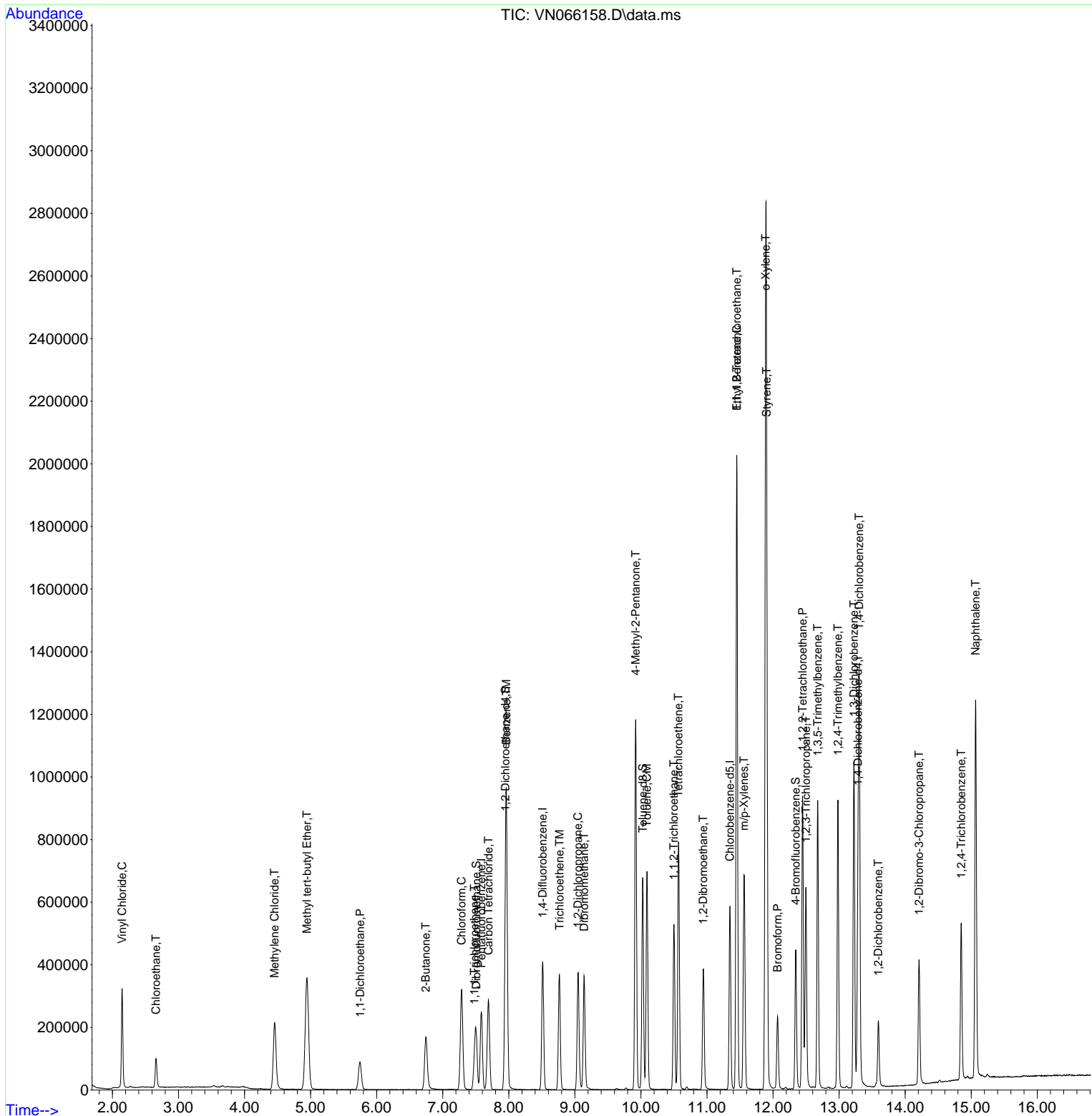
Quant Time: Mar 10 03:19:18 2021  
Quant Method : Z:\voasrv\HPCHEM1\MSVOA\_N\methods\82N030921W.M  
Quant Title : SW846 8260  
QLast Update : Tue Mar 09 14:48:21 2021  
Response via : Initial Calibration

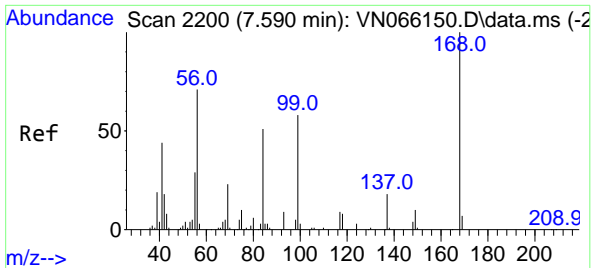
Compound	R.T.	QIon	Response	Conc	Units	Dev(Min)
-----						
(#) = qualifier out of range (m) = manual integration (+) = signals summed						

Data Path : Z:\voasrv\HPCHEM1\MSVOA\_N\Data\VN030921\  
 Data File : VN066158.D  
 Acq On : 9 Mar 2021 16:41  
 Operator : JC/MD  
 Sample : M1557-01  
 Misc : 5.00mL/MSVOA\_N/WATER  
 ALS Vial : 14 Sample Multiplier: 1

Instrument :  
 MSVOA\_N  
 Client Sampled :  
 PT-VOA-WP

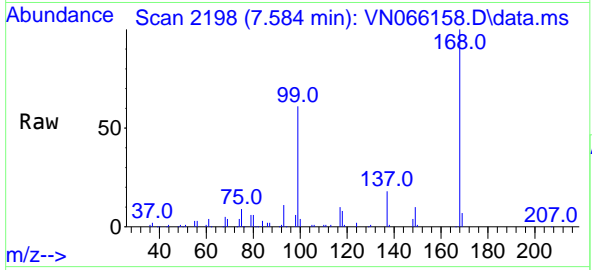
Quant Time: Mar 10 03:19:18 2021  
 Quant Method : Z:\voasrv\HPCHEM1\MSVOA\_N\methods\82N030921W.M  
 Quant Title : SW846 8260  
 QLast Update : Tue Mar 09 14:48:21 2021  
 Response via : Initial Calibration



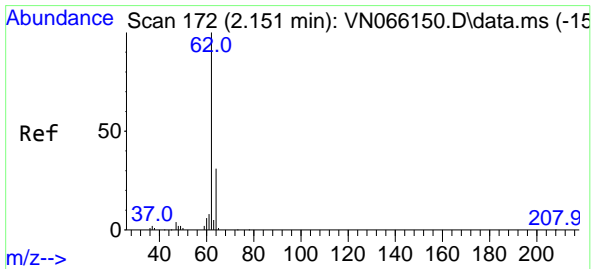
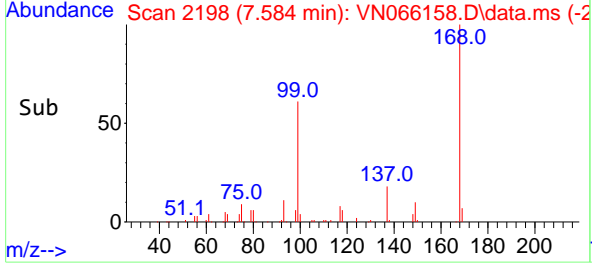
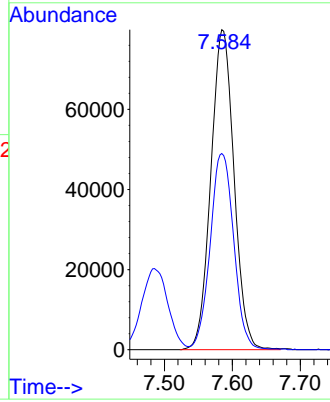


#1  
 Pentafluorobenzene  
 Concen: 50.00 ug/l  
 RT: 7.584 min Scan# 2198  
 Delta R.T. -0.006 min  
 Lab File: VN066158.D  
 Acq: 9 Mar 2021 16:41

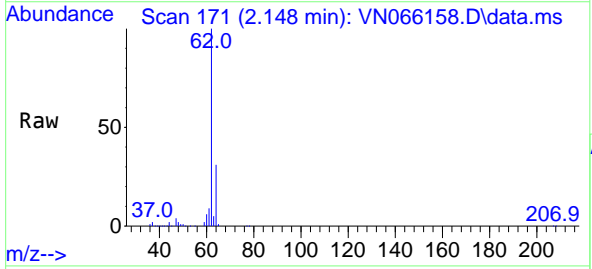
**Instrument :**  
 MSVOA\_N  
**ClientSampled :**  
 PT-VOA-WP



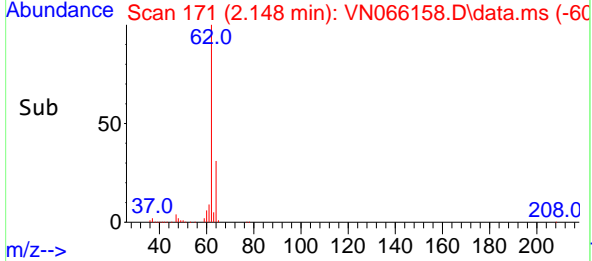
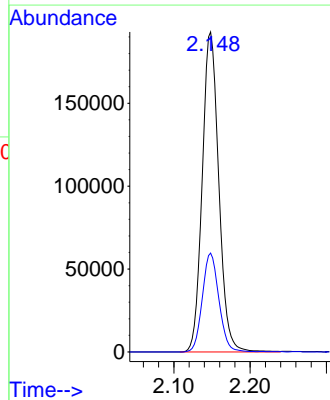
Tgt Ion:168 Resp: 189291  
 Ion Ratio Lower Upper  
 168 100  
 99 61.1 42.6 63.8

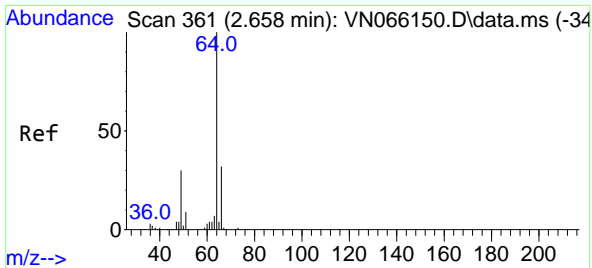


#4  
 Vinyl Chloride  
 Concen: 85.84 ug/l  
 RT: 2.148 min Scan# 171  
 Delta R.T. -0.003 min  
 Lab File: VN066158.D  
 Acq: 9 Mar 2021 16:41



Tgt Ion: 62 Resp: 290883  
 Ion Ratio Lower Upper  
 62 100  
 64 30.9 25.1 37.7

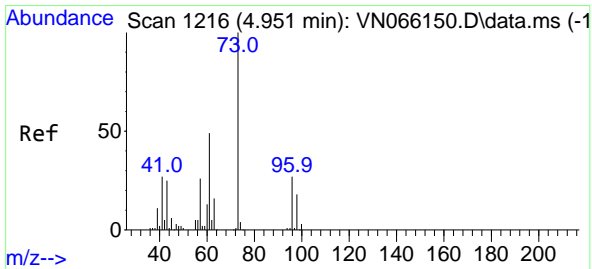
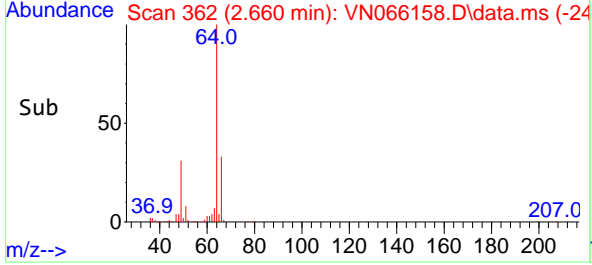
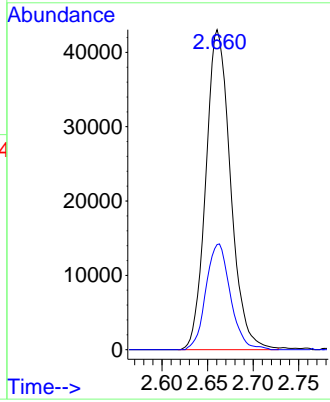
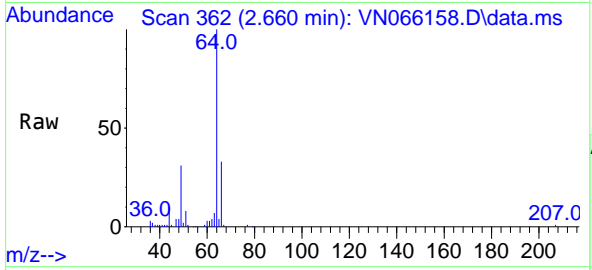




#6  
 Chloroethane  
 Concen: 43.49 ug/l  
 RT: 2.660 min Scan# 362  
 Delta R.T. 0.002 min  
 Lab File: VN066158.D  
 Acq: 9 Mar 2021 16:41

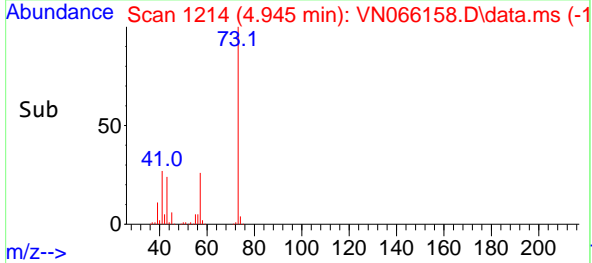
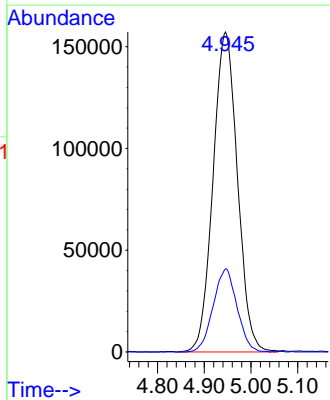
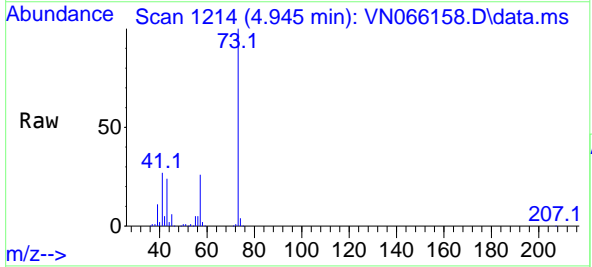
**Instrument :**  
 MSVOA\_N  
**ClientSampled :**  
 PT-VOA-WP

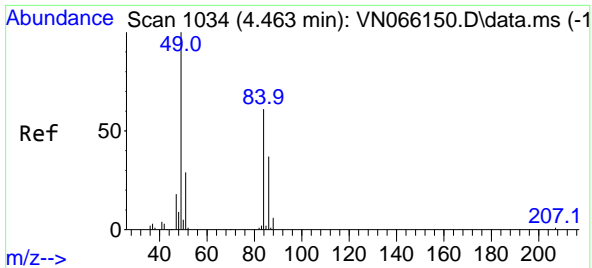
Tgt Ion: 64 Resp: 81065  
 Ion Ratio Lower Upper  
 64 100  
 66 32.9 25.4 38.2



#19  
 Methyl tert-butyl Ether  
 Concen: 65.48 ug/l  
 RT: 4.945 min Scan# 1214  
 Delta R.T. -0.006 min  
 Lab File: VN066158.D  
 Acq: 9 Mar 2021 16:41

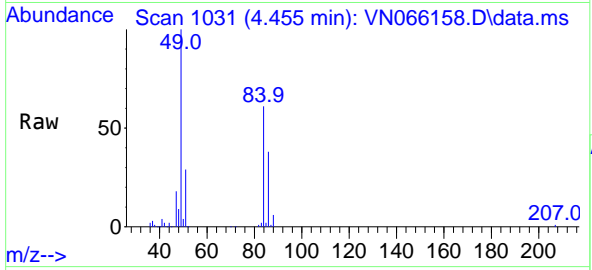
Tgt Ion: 73 Resp: 570331  
 Ion Ratio Lower Upper  
 73 100  
 57 26.0 17.3 25.9#





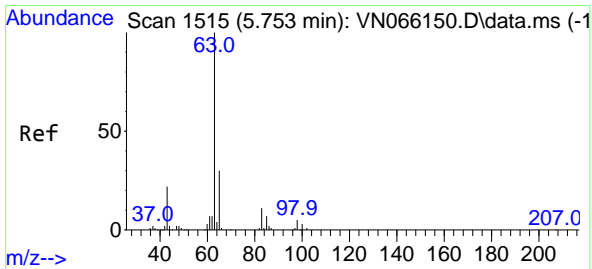
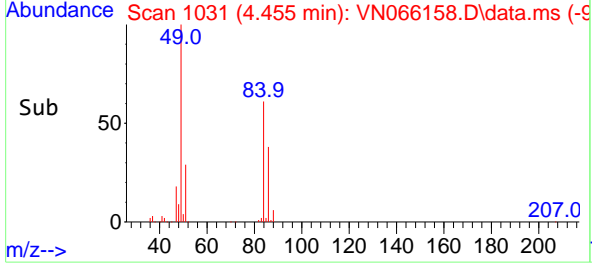
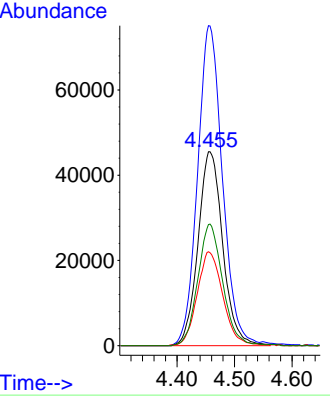
#20  
 Methylene Chloride  
 Concen: 51.20 ug/l  
 RT: 4.455 min Scan# 1031  
 Delta R.T. -0.008 min  
 Lab File: VN066158.D  
 Acq: 9 Mar 2021 16:41

**Instrument :**  
 MSVOA\_N  
**ClientSampled :**  
 PT-VOA-WP

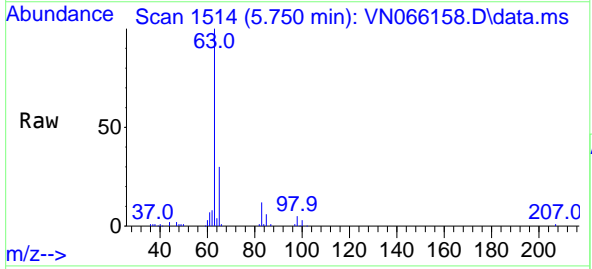


Tgt Ion: 84 Resp: 136231

Ion	Ratio	Lower	Upper
84	100		
49	165.0	94.6	141.8#
51	48.1	29.9	44.9#
86	62.4	51.4	77.2

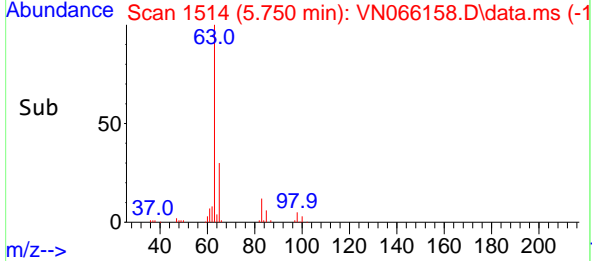
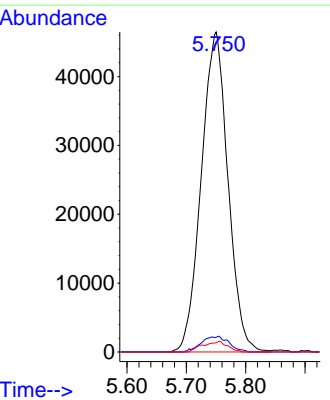


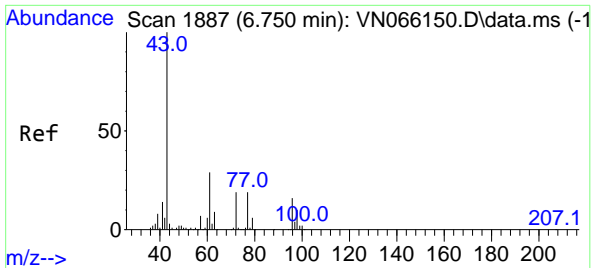
#24  
 1,1-Dichloroethane  
 Concen: 26.64 ug/l  
 RT: 5.750 min Scan# 1514  
 Delta R.T. -0.003 min  
 Lab File: VN066158.D  
 Acq: 9 Mar 2021 16:41



Tgt Ion: 63 Resp: 145060

Ion	Ratio	Lower	Upper
63	100		
98	4.6	3.5	10.4
100	2.9	2.3	6.9

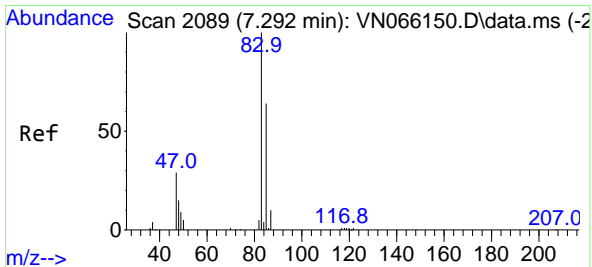
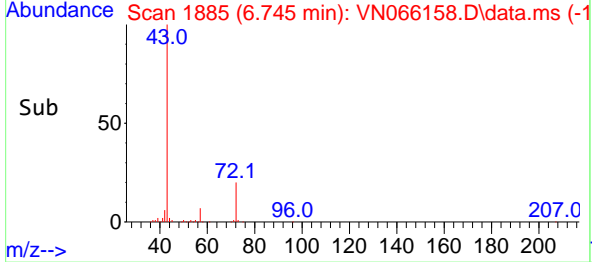
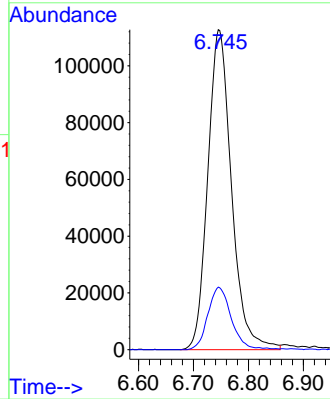
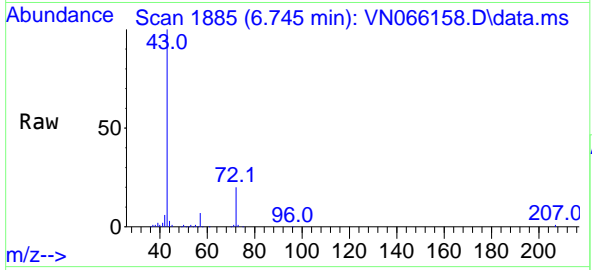




#25  
 2-Butanone  
 Concen: 120.92 ug/l  
 RT: 6.745 min Scan# 1885  
 Delta R.T. -0.005 min  
 Lab File: VN066158.D  
 Acq: 9 Mar 2021 16:41

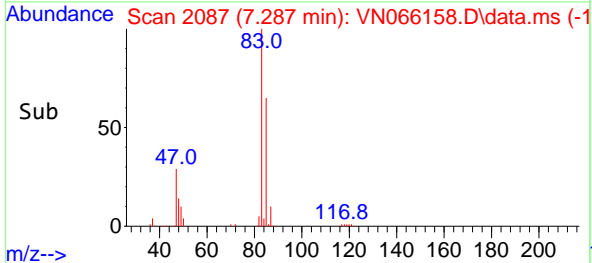
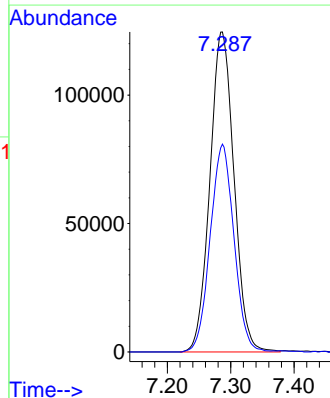
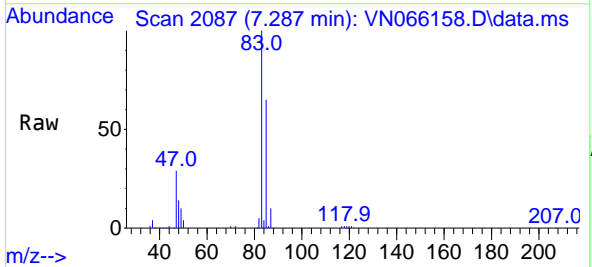
Instrument :  
 MSVOA\_N  
 ClientSampled :  
 PT-VOA-WP

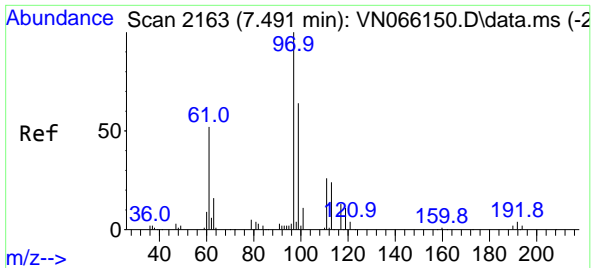
Tgt Ion: 43 Resp: 338177  
 Ion Ratio Lower Upper  
 43 100  
 72 19.5 23.1 34.7#



#30  
 Chloroform  
 Concen: 67.49 ug/l  
 RT: 7.287 min Scan# 2087  
 Delta R.T. -0.005 min  
 Lab File: VN066158.D  
 Acq: 9 Mar 2021 16:41

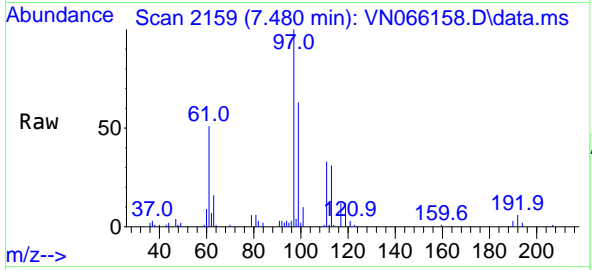
Tgt Ion: 83 Resp: 329612  
 Ion Ratio Lower Upper  
 83 100  
 85 65.0 52.6 78.8



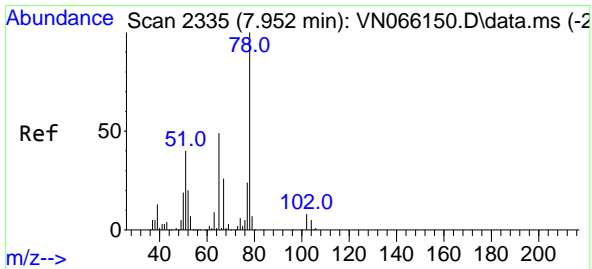
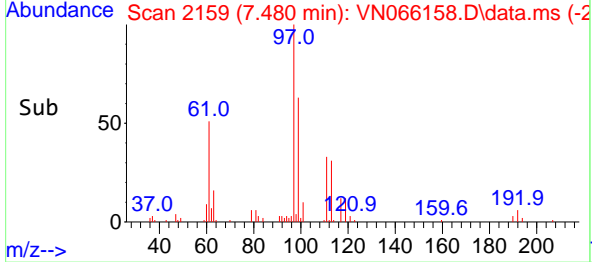
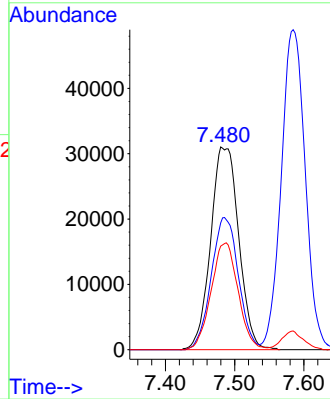


#32  
 1,1,1-Trichloroethane  
 Concen: 21.45 ug/l  
 RT: 7.480 min Scan# 2159  
 Delta R.T. -0.011 min  
 Lab File: VN066158.D  
 Acq: 9 Mar 2021 16:41

Instrument :  
 MSVOA\_N  
 ClientSampled :  
 PT-VOA-WP

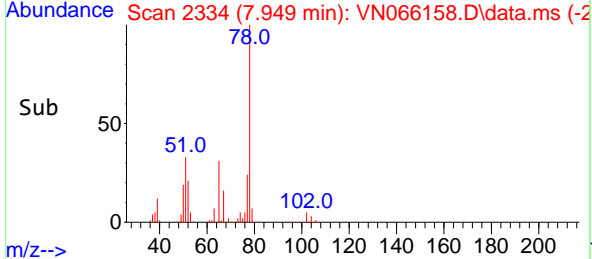
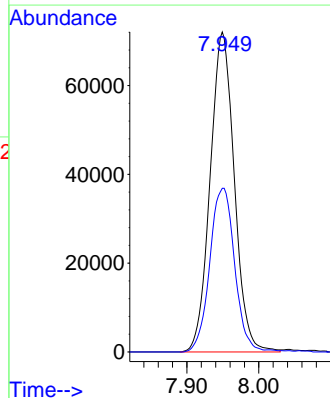
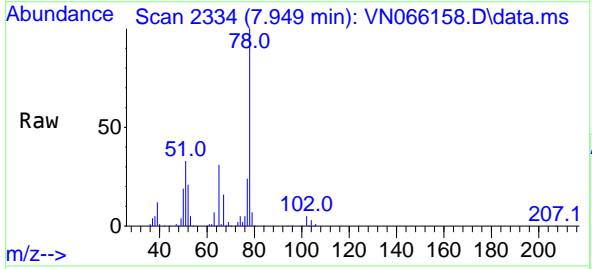


Tgt Ion: 97 Resp: 87440  
 Ion Ratio Lower Upper  
 97 100  
 99 63.2 50.8 76.2  
 61 50.7 34.3 51.5

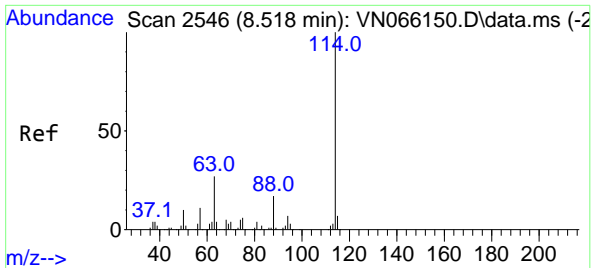


#33  
 1,2-Dichloroethane-d4  
 Concen: 47.11 ug/l  
 RT: 7.949 min Scan# 2334  
 Delta R.T. -0.003 min  
 Lab File: VN066158.D  
 Acq: 9 Mar 2021 16:41

Tgt Ion: 65 Resp: 168284  
 Ion Ratio Lower Upper  
 65 100  
 67 52.5 0.0 107.2

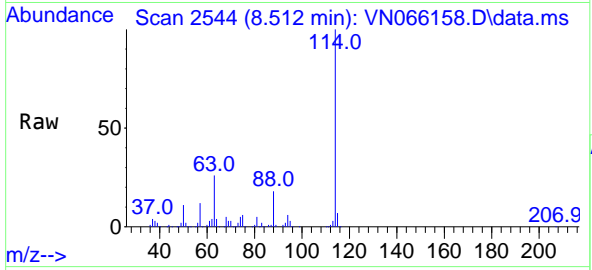






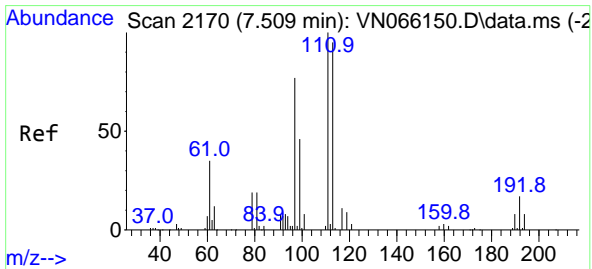
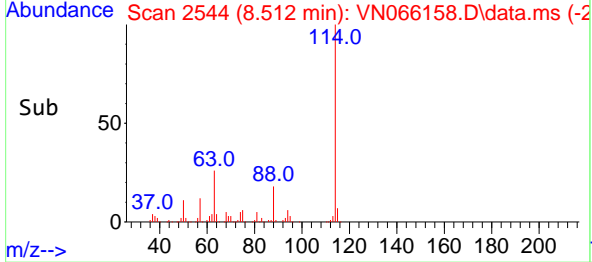
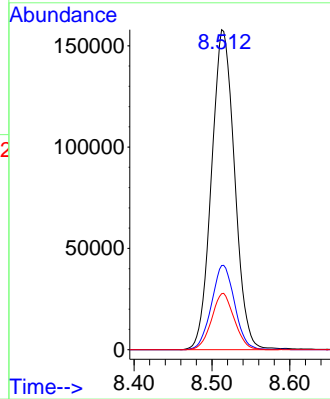
#34  
 1,4-Difluorobenzene  
 Concen: 50.00 ug/l  
 RT: 8.512 min Scan# 2544  
 Delta R.T. -0.006 min  
 Lab File: VN066158.D  
 Acq: 9 Mar 2021 16:41

Instrument :  
 MSVOA\_N  
 ClientSampled :  
 PT-VOA-WP

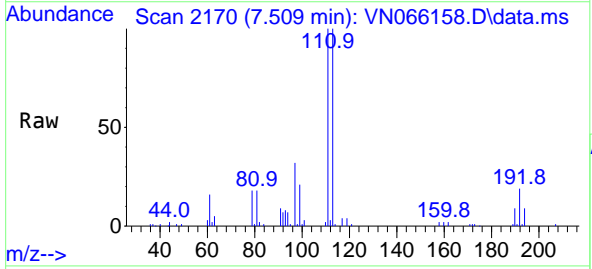


Tgt Ion:114 Resp: 325016

Ion	Ratio	Lower	Upper
114	100		
63	26.3	0.0	38.6
88	17.5	0.0	30.6

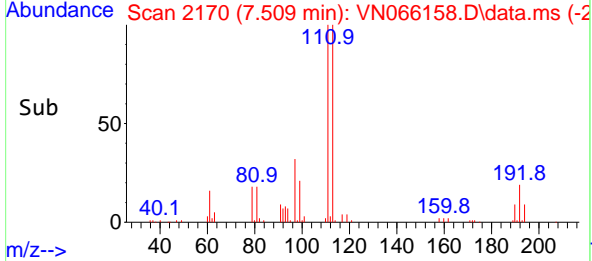
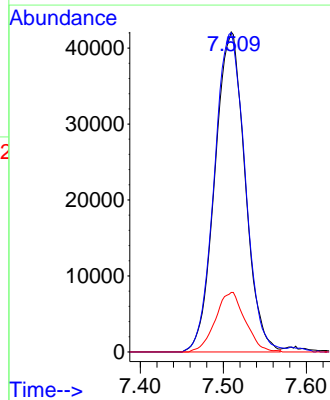


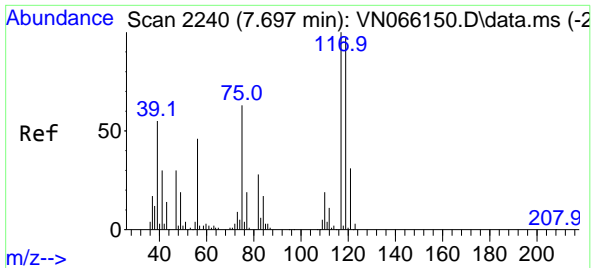
#35  
 Dibromofluoromethane  
 Concen: 47.79 ug/l  
 RT: 7.509 min Scan# 2170  
 Delta R.T. 0.000 min  
 Lab File: VN066158.D  
 Acq: 9 Mar 2021 16:41



Tgt Ion:113 Resp: 105978

Ion	Ratio	Lower	Upper
113	100		
111	101.9	82.2	123.2
192	18.5	15.4	23.0



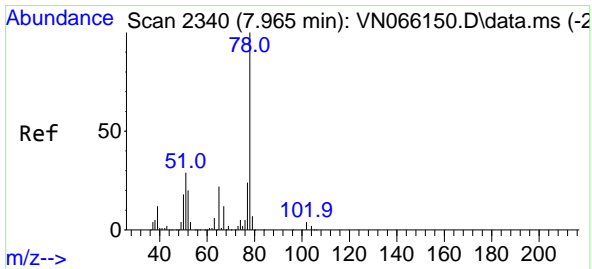
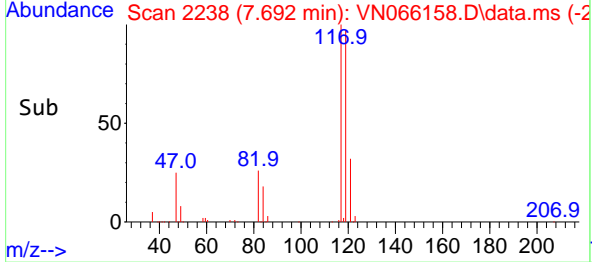
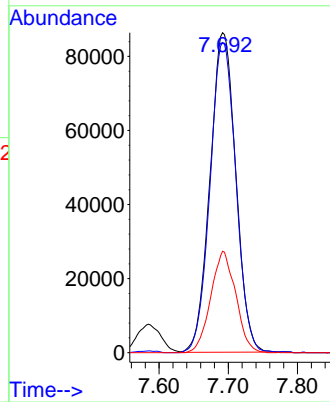
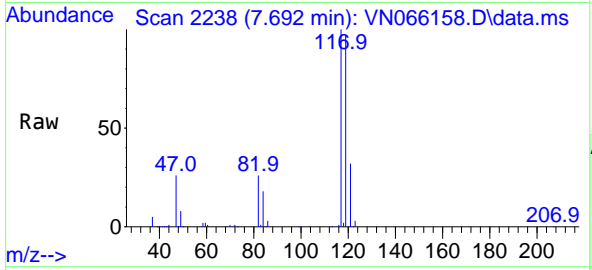


#38  
 Carbon Tetrachloride  
 Concen: 69.40 ug/l  
 RT: 7.692 min Scan# 2238  
 Delta R.T. -0.005 min  
 Lab File: VN066158.D  
 Acq: 9 Mar 2021 16:41

Instrument :  
 MSVOA\_N  
 ClientSampled :  
 PT-VOA-WP

Tgt Ion:117 Resp: 223391

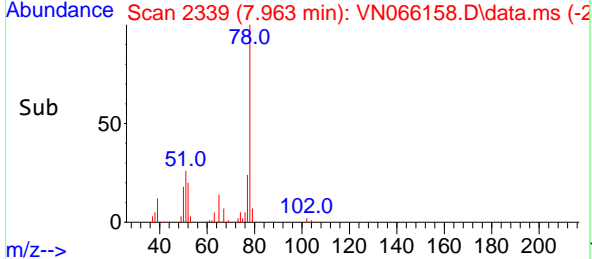
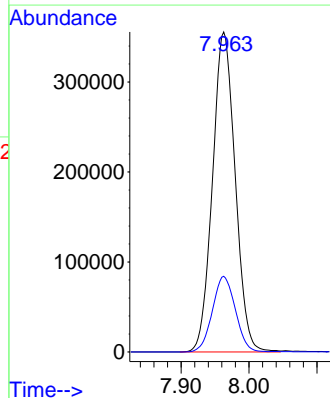
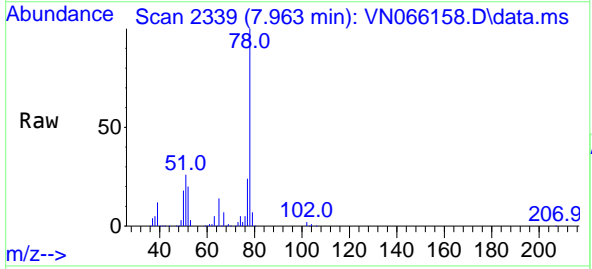
Ion	Ratio	Lower	Upper
117	100		
119	97.1	76.0	114.0
121	31.8	24.5	36.7

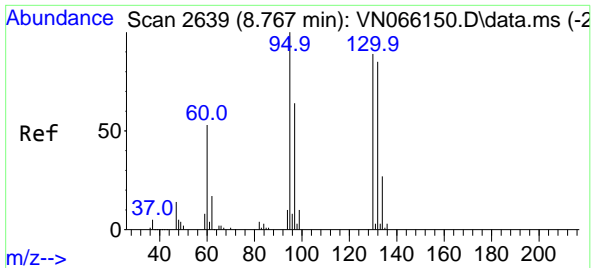


#40  
 Benzene  
 Concen: 76.29 ug/l  
 RT: 7.963 min Scan# 2339  
 Delta R.T. -0.002 min  
 Lab File: VN066158.D  
 Acq: 9 Mar 2021 16:41

Tgt Ion: 78 Resp: 824513

Ion	Ratio	Lower	Upper
78	100		
77	23.7	19.0	28.4

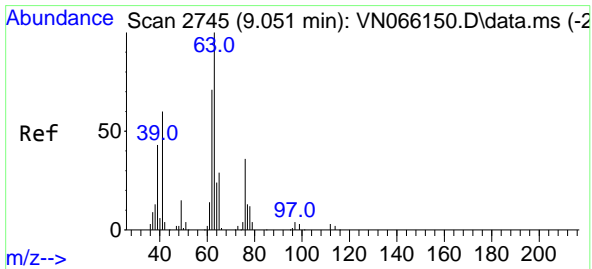
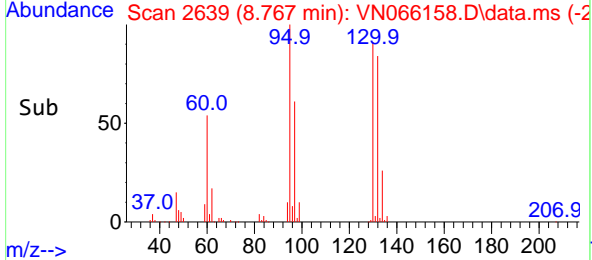
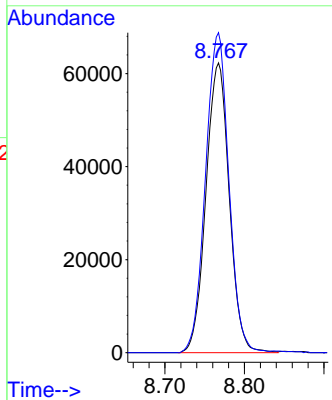
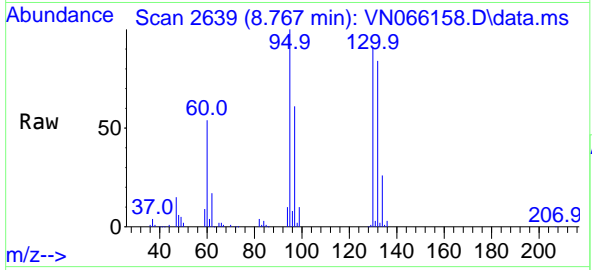




#44  
 Trichloroethene  
 Concen: 49.64 ug/l  
 RT: 8.767 min Scan# 2639  
 Delta R.T. 0.000 min  
 Lab File: VN066158.D  
 Acq: 9 Mar 2021 16:41

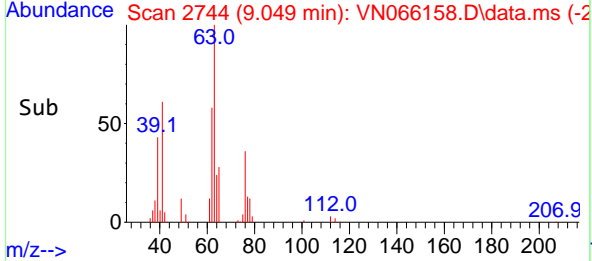
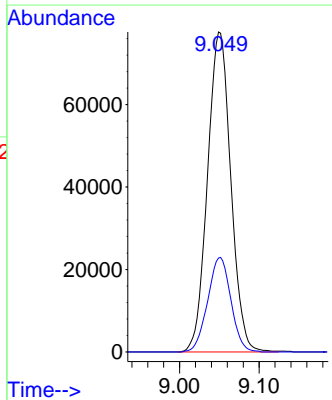
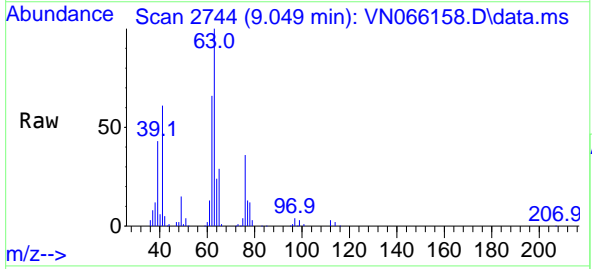
**Instrument :**  
 MSVOA\_N  
**ClientSampled :**  
 PT-VOA-WP

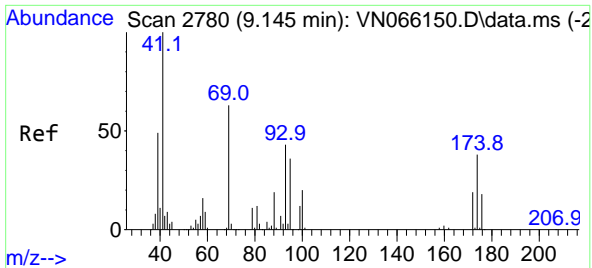
Tgt Ion:130 Resp: 127091  
 Ion Ratio Lower Upper  
 130 100  
 95 110.5 0.0 199.6



#45  
 1,2-Dichloropropane  
 Concen: 48.06 ug/l  
 RT: 9.049 min Scan# 2744  
 Delta R.T. -0.002 min  
 Lab File: VN066158.D  
 Acq: 9 Mar 2021 16:41

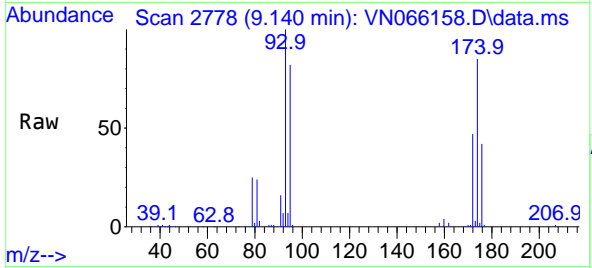
Tgt Ion: 63 Resp: 157815  
 Ion Ratio Lower Upper  
 63 100  
 65 29.3 24.9 37.3



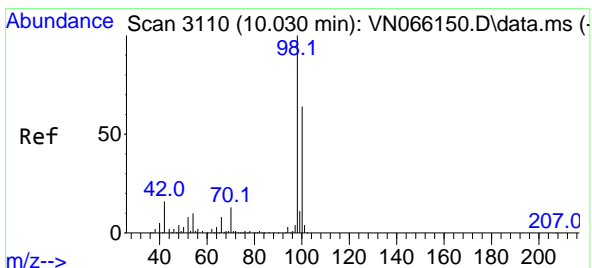
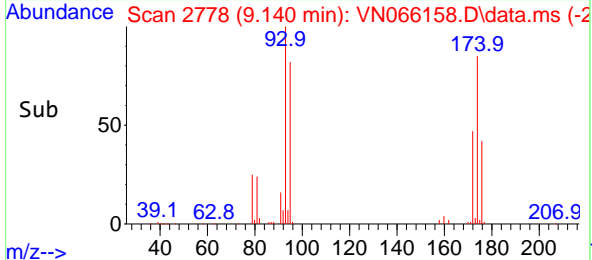
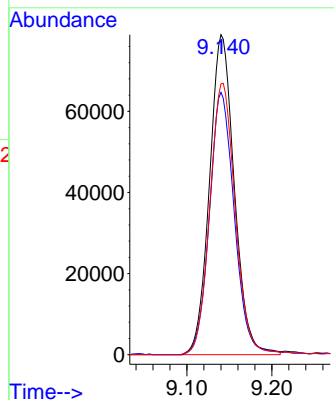


#46  
 Dibromomethane  
 Concen: 90.29 ug/l  
 RT: 9.140 min Scan# 2778  
 Delta R.T. -0.005 min  
 Lab File: VN066158.D  
 Acq: 9 Mar 2021 16:41

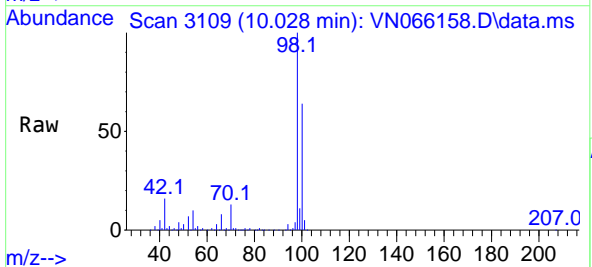
Instrument :  
 MSVOA\_N  
 ClientSampled :  
 PT-VOA-WP



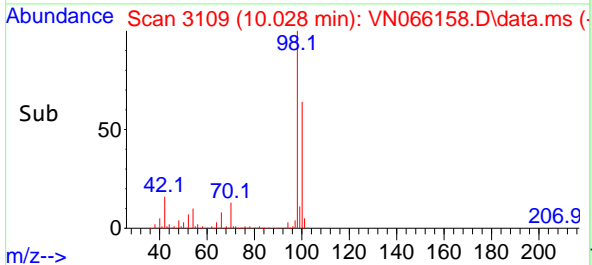
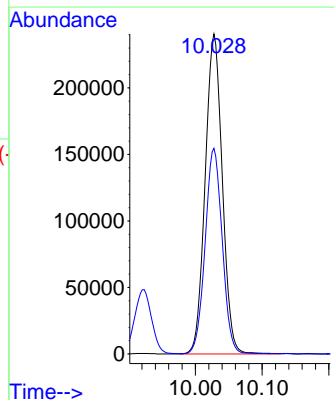
Tgt Ion: 93 Resp: 160107  
 Ion Ratio Lower Upper  
 93 100  
 95 82.4 67.0 100.6  
 174 87.1 83.2 124.8

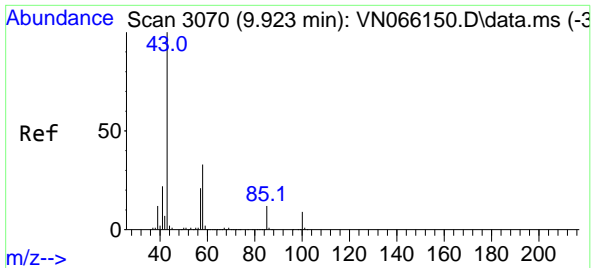


#50  
 Toluene-d8  
 Concen: 49.19 ug/l  
 RT: 10.028 min Scan# 3109  
 Delta R.T. -0.002 min  
 Lab File: VN066158.D  
 Acq: 9 Mar 2021 16:41



Tgt Ion: 98 Resp: 429085  
 Ion Ratio Lower Upper  
 98 100  
 100 63.8 50.5 75.7

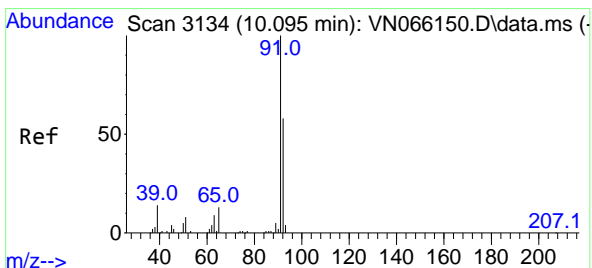
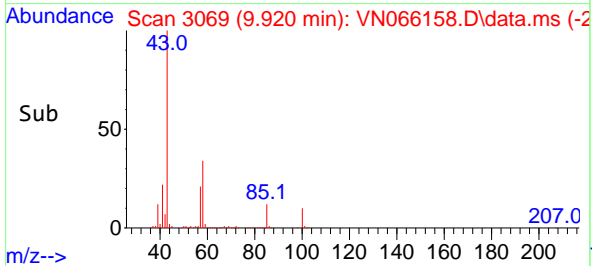
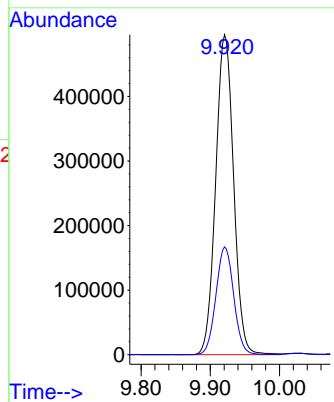
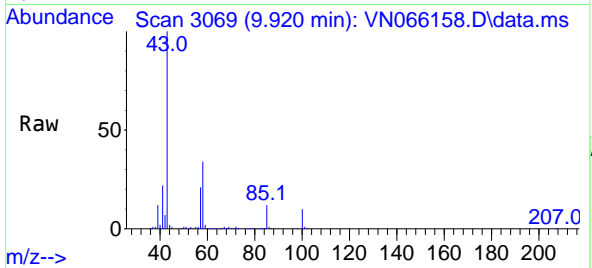




#51  
 4-Methyl-2-Pentanone  
 Concen: 160.50 ug/l  
 RT: 9.920 min Scan# 3069  
 Delta R.T. -0.003 min  
 Lab File: VN066158.D  
 Acq: 9 Mar 2021 16:41

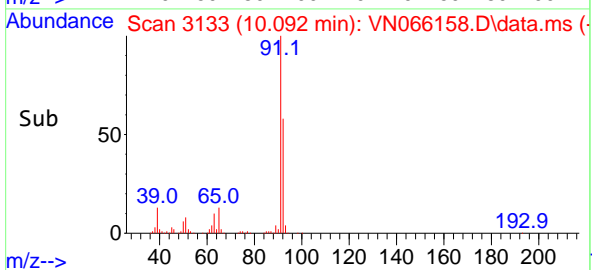
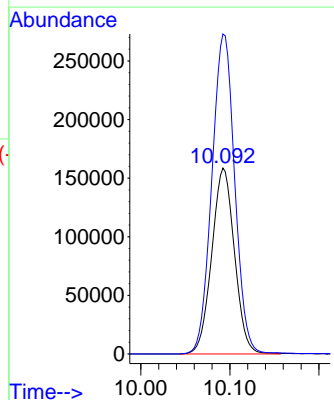
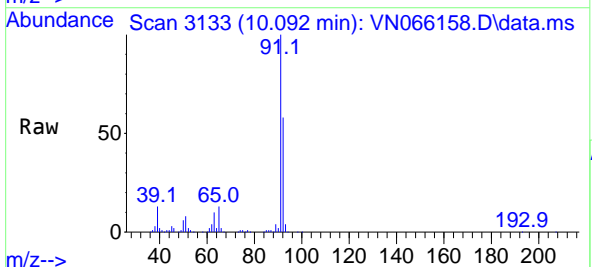
Instrument :  
 MSVOA\_N  
 ClientSampled :  
 PT-VOA-WP

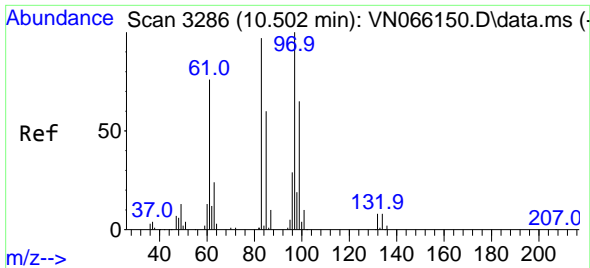
Tgt Ion: 43 Resp: 892303  
 Ion Ratio Lower Upper  
 43 100  
 58 33.5 32.5 48.7



#52  
 Toluene  
 Concen: 44.06 ug/l  
 RT: 10.092 min Scan# 3133  
 Delta R.T. -0.003 min  
 Lab File: VN066158.D  
 Acq: 9 Mar 2021 16:41

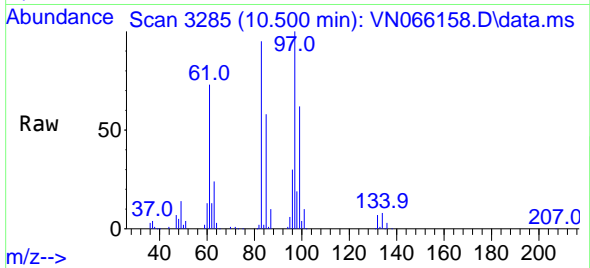
Tgt Ion: 92 Resp: 280950  
 Ion Ratio Lower Upper  
 92 100  
 91 173.3 140.7 211.1



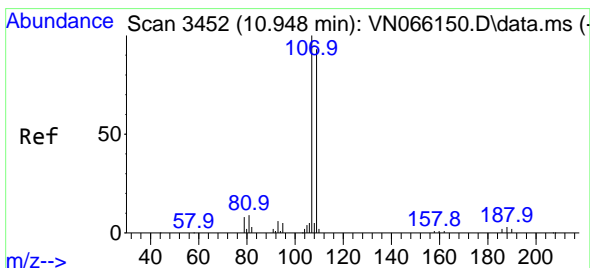
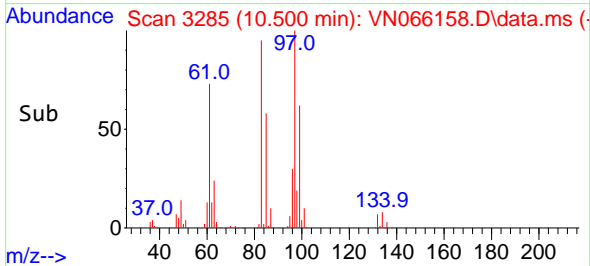
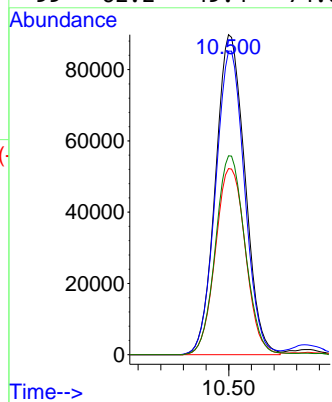


#55  
 1,1,2-Trichloroethane  
 Concen: 65.00 ug/l  
 RT: 10.500 min Scan# 3285  
 Delta R.T. -0.002 min  
 Lab File: VN066158.D  
 Acq: 9 Mar 2021 16:41

Instrument :  
 MSVOA\_N  
 ClientSampled :  
 PT-VOA-WP

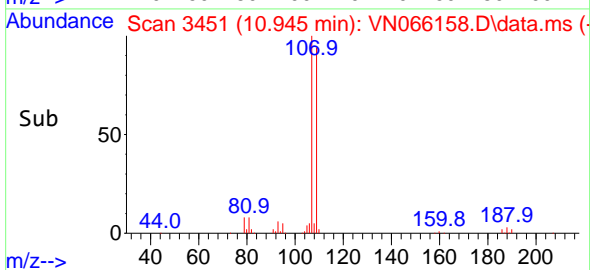
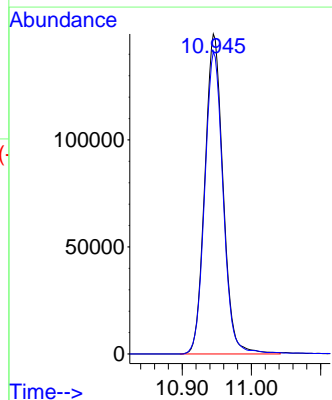
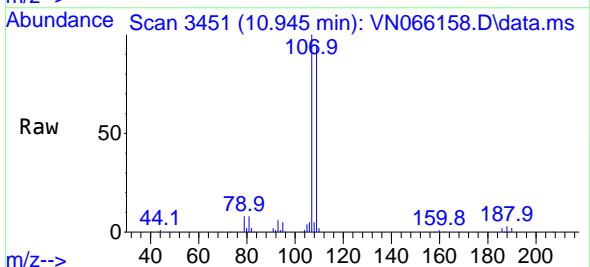


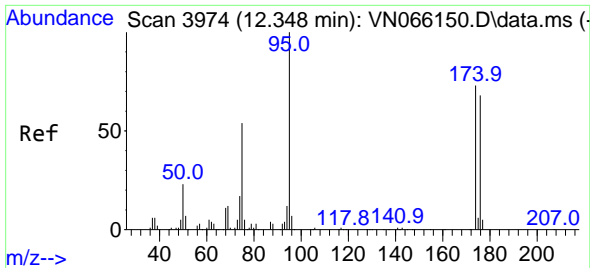
Tgt Ion: 97 Resp: 161624  
 Ion Ratio Lower Upper  
 97 100  
 83 94.8 67.7 101.5  
 85 58.2 44.5 66.7  
 99 62.2 49.4 74.0



#61  
 1,2-Dibromoethane  
 Concen: 107.59 ug/l  
 RT: 10.945 min Scan# 3451  
 Delta R.T. -0.003 min  
 Lab File: VN066158.D  
 Acq: 9 Mar 2021 16:41

Tgt Ion: 107 Resp: 273428  
 Ion Ratio Lower Upper  
 107 100  
 109 94.7 75.6 113.4

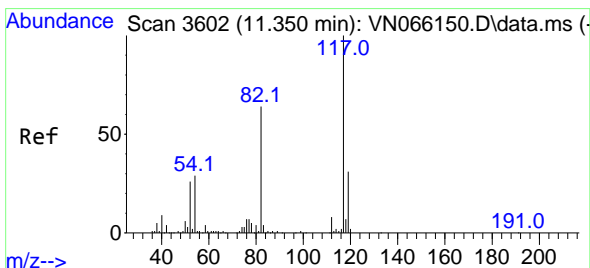
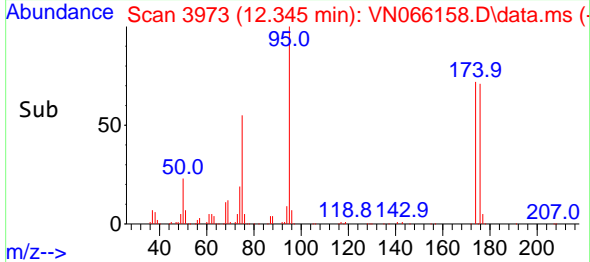
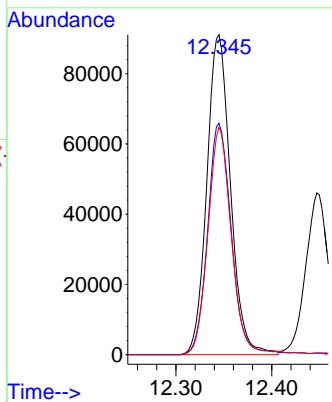
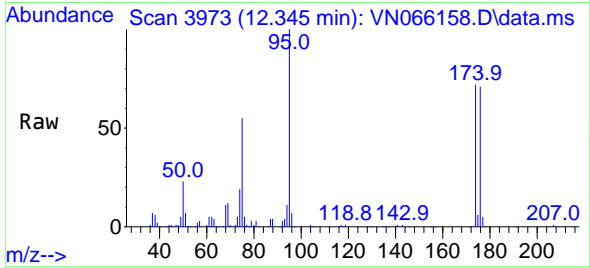




#62  
 4-Bromofluorobenzene  
 Concen: 48.08 ug/l  
 RT: 12.345 min Scan# 3973  
 Delta R.T. -0.003 min  
 Lab File: VN066158.D  
 Acq: 9 Mar 2021 16:41

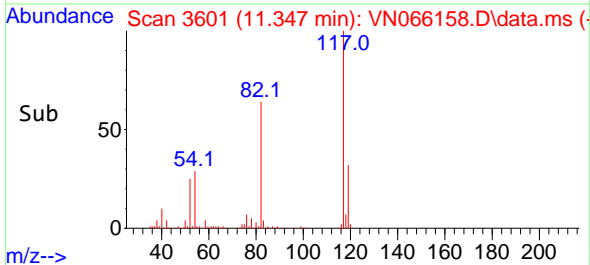
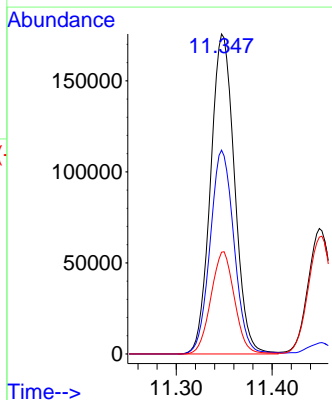
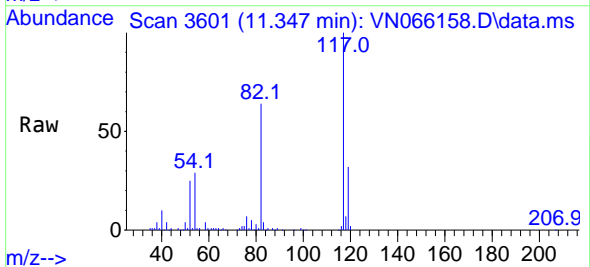
Instrument :  
 MSVOA\_N  
 ClientSampled :  
 PT-VOA-WP

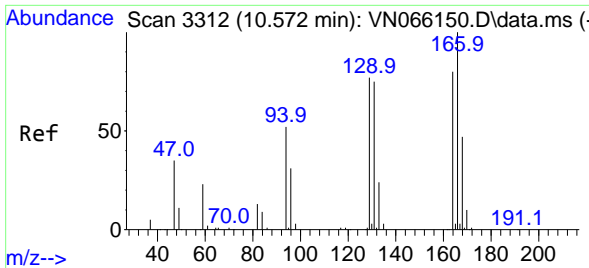
Tgt Ion: 95 Resp: 156160  
 Ion Ratio Lower Upper  
 95 100  
 174 72.5 0.0 169.0  
 176 69.6 0.0 162.4



#63  
 Chlorobenzene-d5  
 Concen: 50.00 ug/l  
 RT: 11.347 min Scan# 3601  
 Delta R.T. -0.003 min  
 Lab File: VN066158.D  
 Acq: 9 Mar 2021 16:41

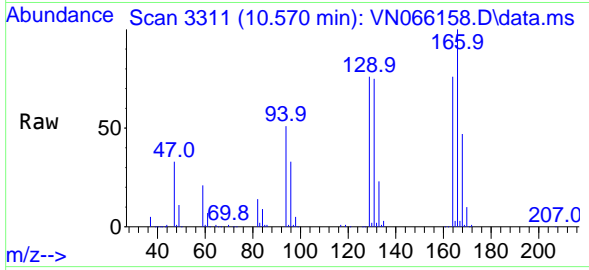
Tgt Ion: 117 Resp: 304871  
 Ion Ratio Lower Upper  
 117 100  
 82 63.7 43.7 65.5  
 119 31.8 26.1 39.1



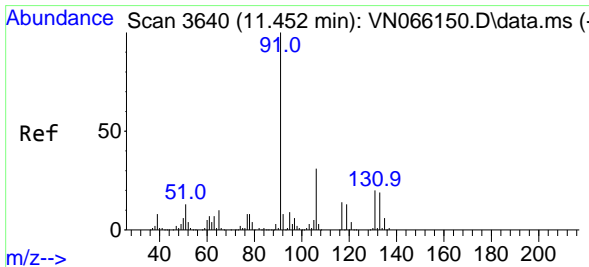
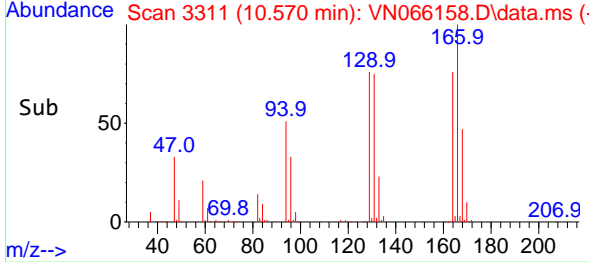
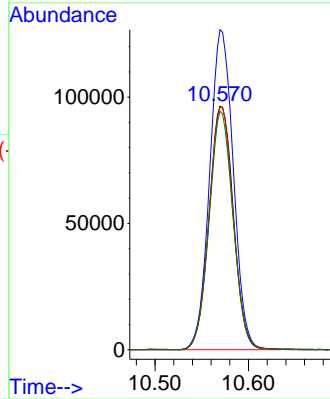


#64  
 Tetrachloroethene  
 Concen: 69.37 ug/l  
 RT: 10.570 min Scan# 3311  
 Delta R.T. -0.002 min  
 Lab File: VN066158.D  
 Acq: 9 Mar 2021 16:41

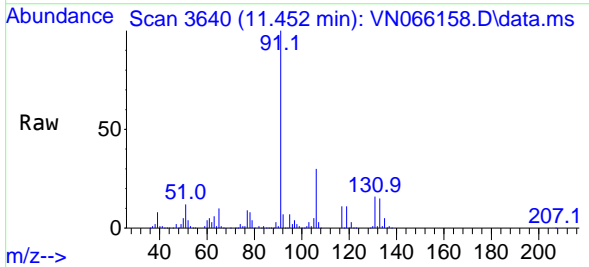
Instrument :  
 MSVOA\_N  
 ClientSampled :  
 PT-VOA-WP



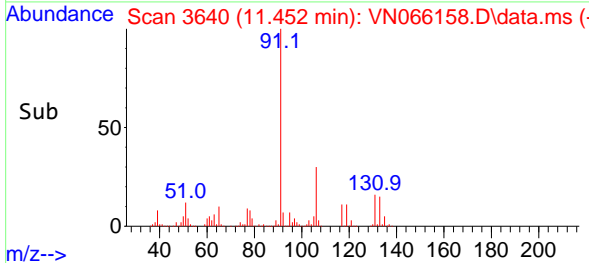
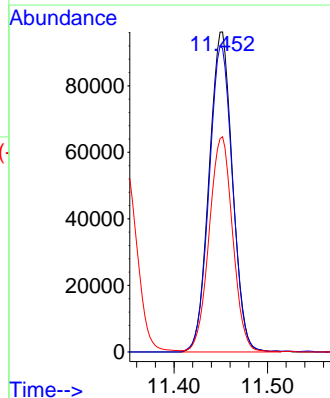
Tgt Ion:164 Resp: 174371  
 Ion Ratio Lower Upper  
 164 100  
 166 131.4 102.6 154.0  
 129 99.7 76.2 114.4  
 131 98.0 73.4 110.2



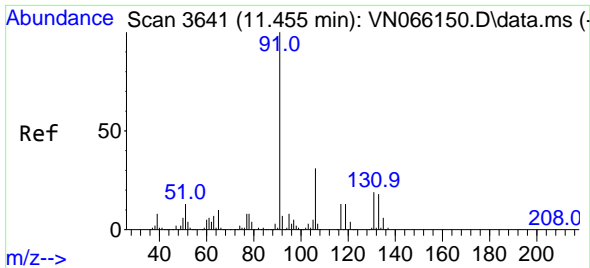
#66  
 1,1,1,2-Tetrachloroethane  
 Concen: 70.09 ug/l  
 RT: 11.452 min Scan# 3640  
 Delta R.T. -0.000 min  
 Lab File: VN066158.D  
 Acq: 9 Mar 2021 16:41



Tgt Ion:131 Resp: 167170  
 Ion Ratio Lower Upper  
 131 100  
 133 96.1 48.0 144.0  
 119 67.7 34.1 102.2



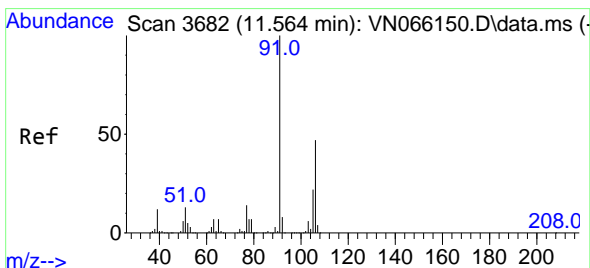
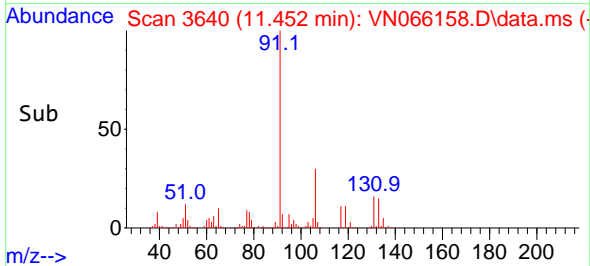
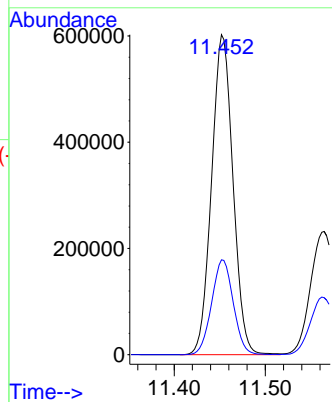
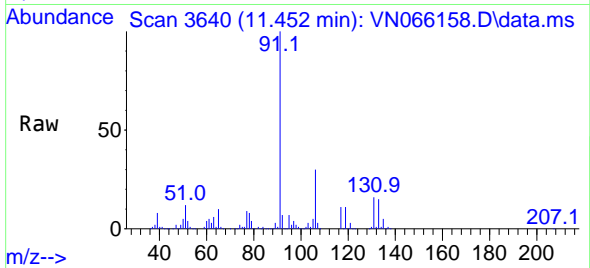




#67  
 Ethyl Benzene  
 Concen: 81.56 ug/l  
 RT: 11.452 min Scan# 3640  
 Delta R.T. -0.003 min  
 Lab File: VN066158.D  
 Acq: 9 Mar 2021 16:41

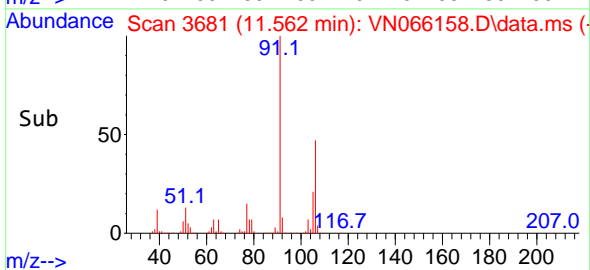
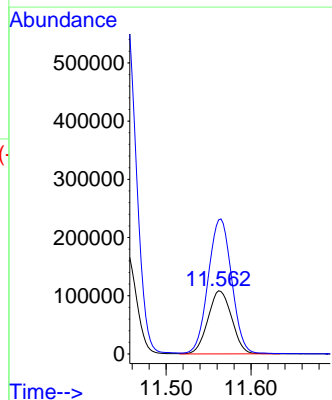
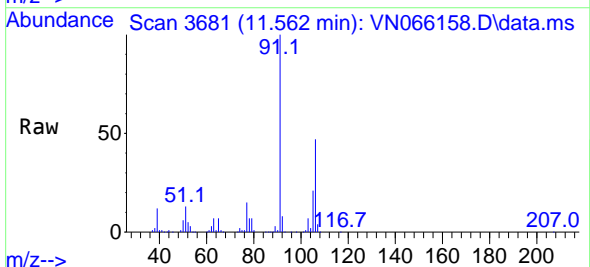
Instrument :  
 MSVOA\_N  
 ClientSampled :  
 PT-VOA-WP

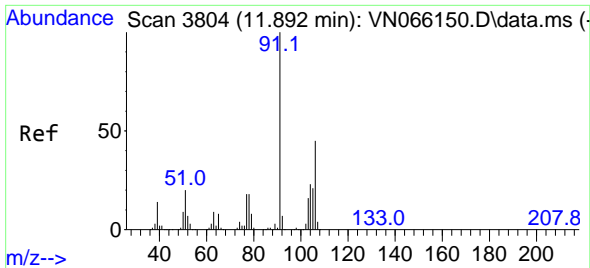
Tgt Ion: 91 Resp: 982637  
 Ion Ratio Lower Upper  
 91 100  
 106 29.6 25.5 38.3



#68  
 m/p-Xylenes  
 Concen: 48.37 ug/l  
 RT: 11.562 min Scan# 3681  
 Delta R.T. -0.002 min  
 Lab File: VN066158.D  
 Acq: 9 Mar 2021 16:41

Tgt Ion: 106 Resp: 210018  
 Ion Ratio Lower Upper  
 106 100  
 91 212.1 161.4 242.0

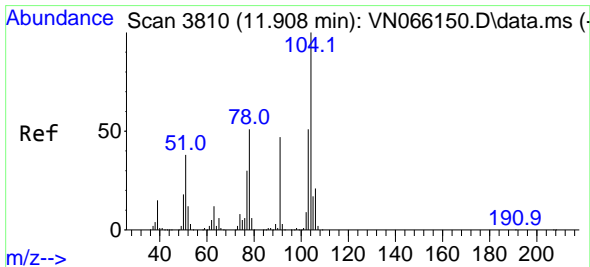
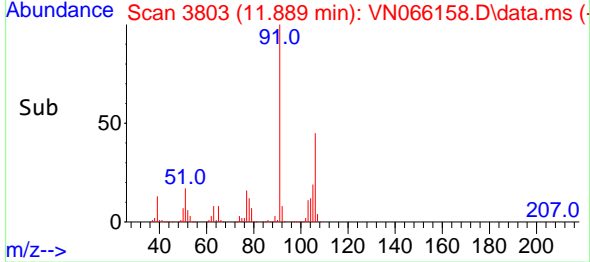
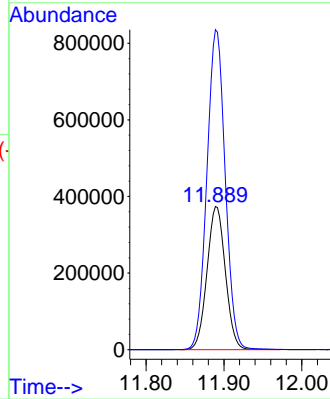
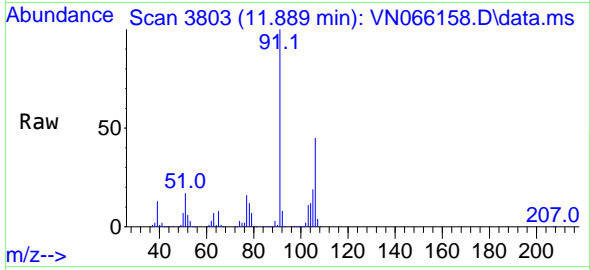




#69  
o-Xylene  
Concen: 146.63 ug/l  
RT: 11.889 min Scan# 3803  
Delta R.T. -0.003 min  
Lab File: VN066158.D  
Acq: 9 Mar 2021 16:41

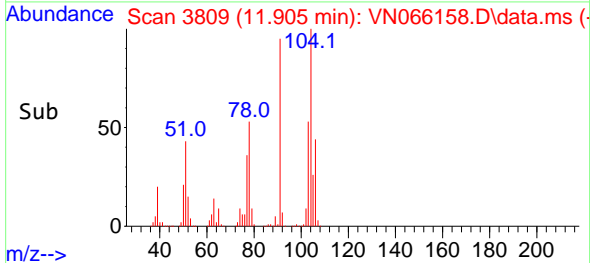
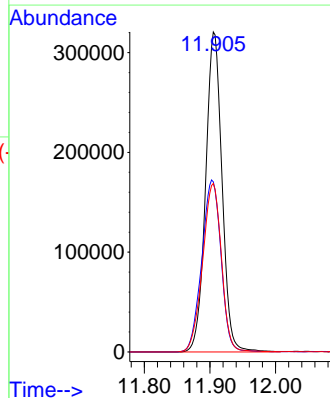
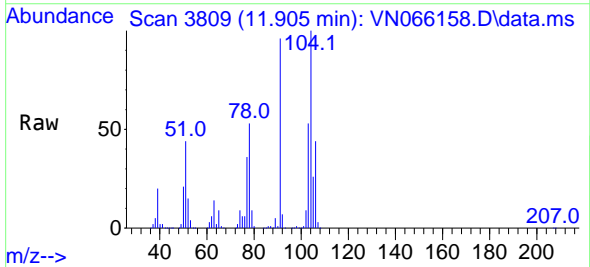
Instrument :  
MSVOA\_N  
ClientSampled :  
PT-VOA-WP

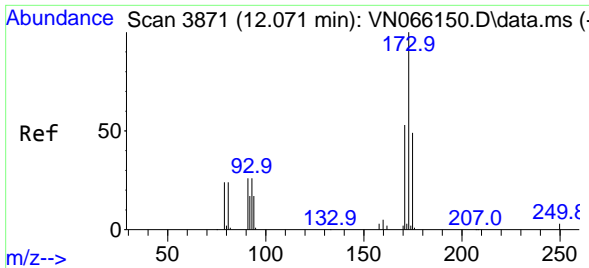
Tgt Ion:106 Resp: 612938  
Ion Ratio Lower Upper  
106 100  
91 222.9 106.8 320.4



#70  
Styrene  
Concen: 81.23 ug/l  
RT: 11.905 min Scan# 3809  
Delta R.T. -0.003 min  
Lab File: VN066158.D  
Acq: 9 Mar 2021 16:41

Tgt Ion:104 Resp: 557372  
Ion Ratio Lower Upper  
104 100  
78 63.0 39.0 58.4#  
103 60.5 44.5 66.7

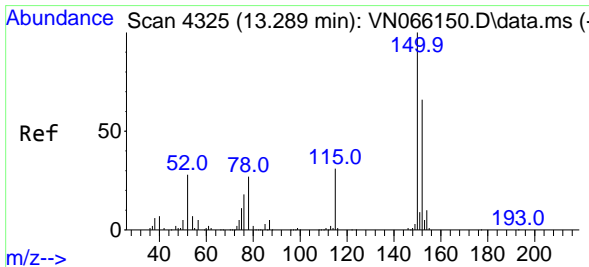
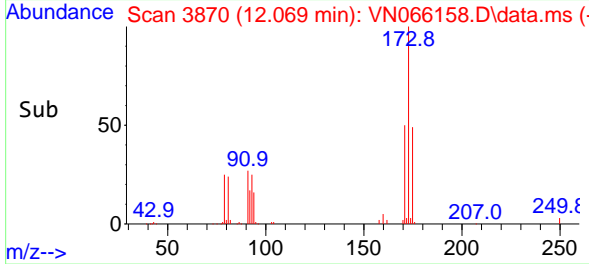
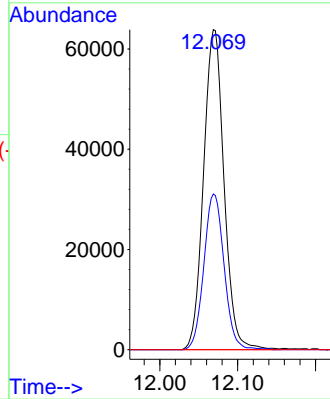
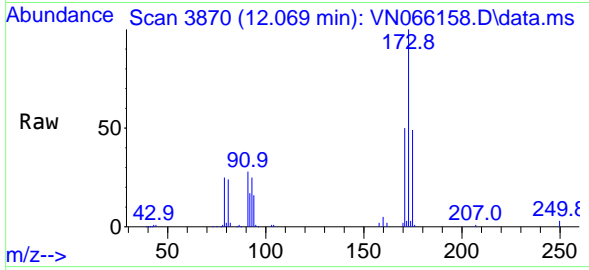




#71  
 Bromoform  
 Concen: 64.99 ug/l  
 RT: 12.069 min Scan# 3870  
 Delta R.T. -0.002 min  
 Lab File: VN066158.D  
 Acq: 9 Mar 2021 16:41

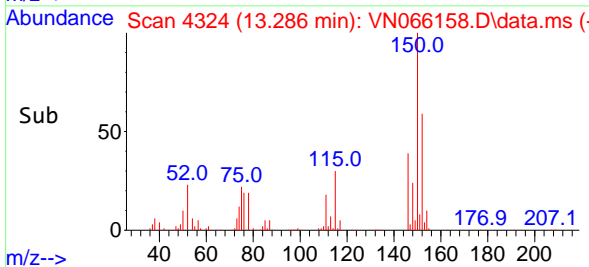
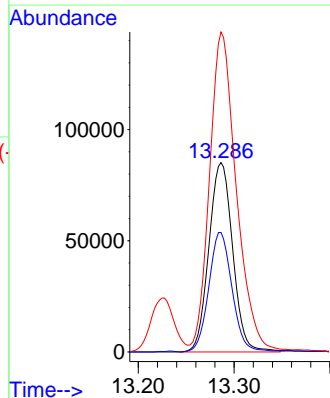
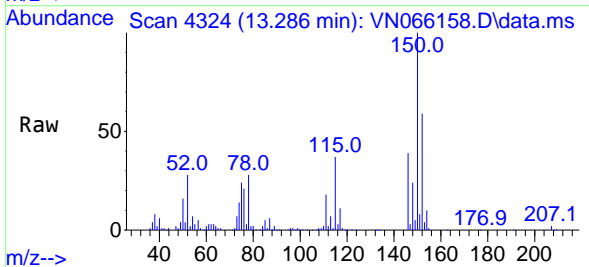
Instrument :  
 MSVOA\_N  
 ClientSampled :  
 PT-VOA-WP

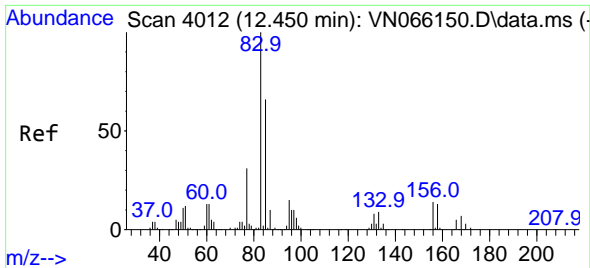
Tgt Ion:173 Resp: 116882  
 Ion Ratio Lower Upper  
 173 100  
 175 48.0 23.8 71.2  
 254 0.0 0.0 0.0



#72  
 1,4-Dichlorobenzene-d4  
 Concen: 50.00 ug/l  
 RT: 13.286 min Scan# 4324  
 Delta R.T. -0.003 min  
 Lab File: VN066158.D  
 Acq: 9 Mar 2021 16:41

Tgt Ion:152 Resp: 147023  
 Ion Ratio Lower Upper  
 152 100  
 115 61.7 28.5 85.6  
 150 187.5 0.0 347.6

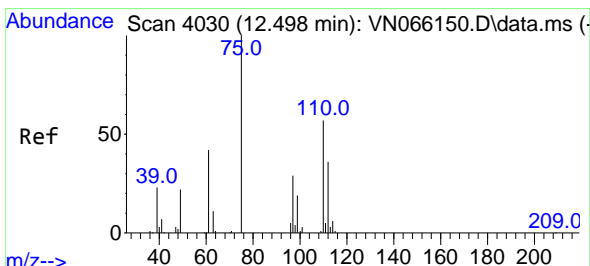
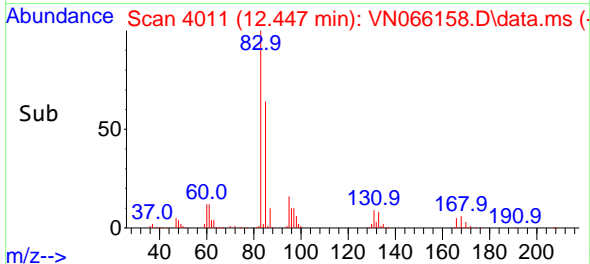
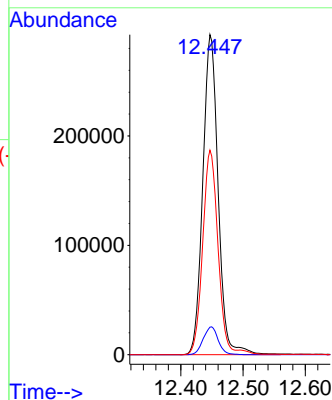
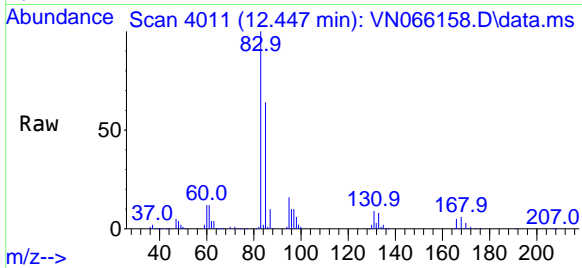




#75  
 1,1,2,2-Tetrachloroethane  
 Concen: 122.07 ug/l  
 RT: 12.447 min Scan# 4011  
 Delta R.T. -0.003 min  
 Lab File: VN066158.D  
 Acq: 9 Mar 2021 16:41

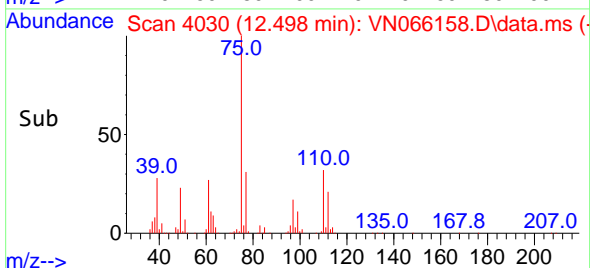
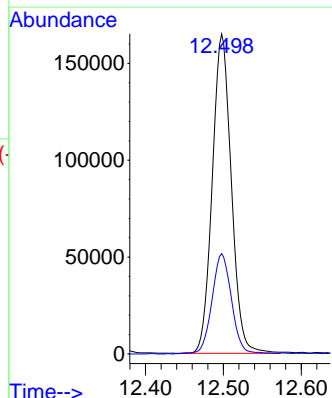
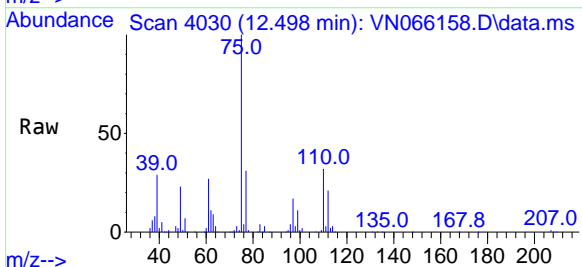
Instrument :  
 MSVOA\_N  
 ClientSampled :  
 PT-VOA-WP

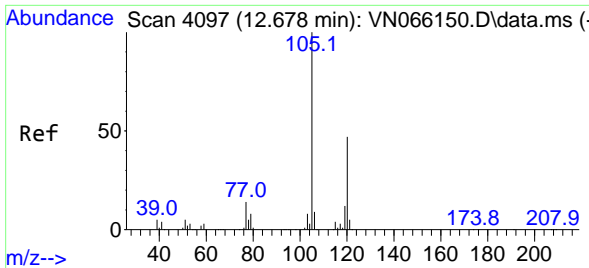
Tgt Ion: 83 Resp: 500380  
 Ion Ratio Lower Upper  
 83 100  
 131 8.5 5.3 15.8  
 85 63.1 32.0 96.0



#76  
 1,2,3-Trichloropropane  
 Concen: 63.38 ug/l  
 RT: 12.498 min Scan# 4030  
 Delta R.T. -0.000 min  
 Lab File: VN066158.D  
 Acq: 9 Mar 2021 16:41

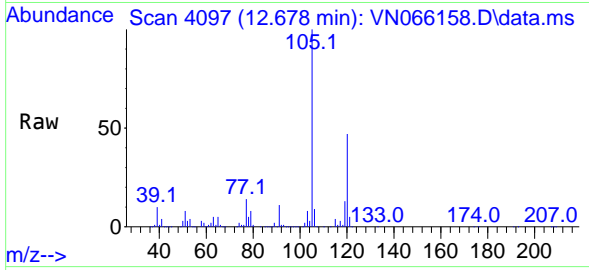
Tgt Ion: 75 Resp: 279280  
 Ion Ratio Lower Upper  
 75 100  
 77 32.5 0.0 0.0#



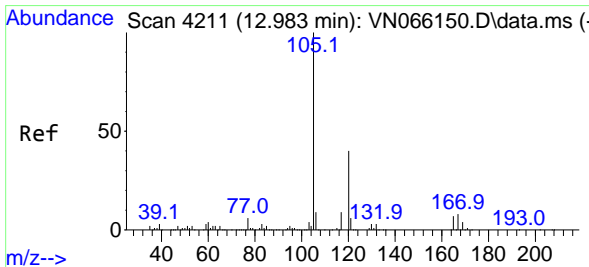
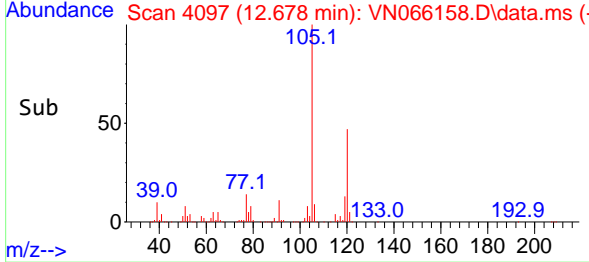
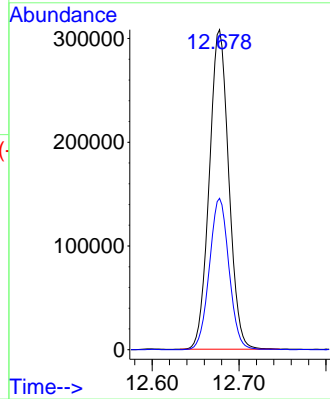


#80  
 1,3,5-Trimethylbenzene  
 Concen: 49.59 ug/l  
 RT: 12.678 min Scan# 4097  
 Delta R.T. -0.000 min  
 Lab File: VN066158.D  
 Acq: 9 Mar 2021 16:41

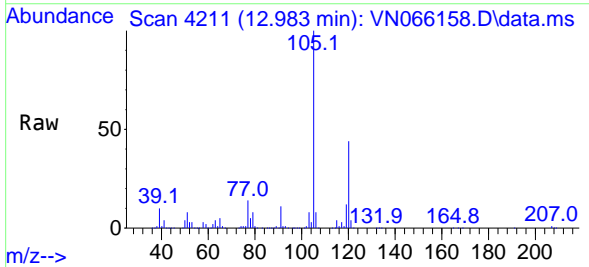
Instrument :  
 MSVOA\_N  
 ClientSampled :  
 PT-VOA-WP



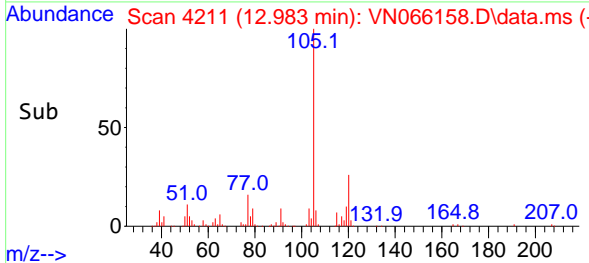
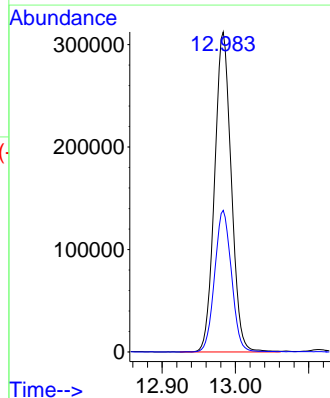
Tgt Ion:105 Resp: 480047  
 Ion Ratio Lower Upper  
 105 100  
 120 47.6 24.3 72.8

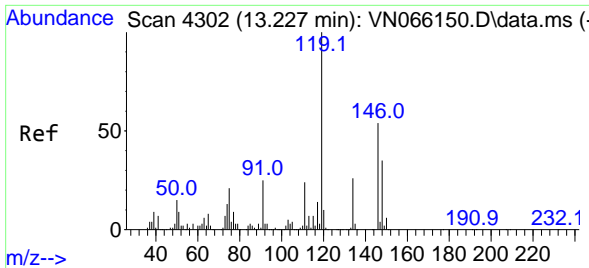


#84  
 1,2,4-Trimethylbenzene  
 Concen: 51.80 ug/l  
 RT: 12.983 min Scan# 4211  
 Delta R.T. 0.000 min  
 Lab File: VN066158.D  
 Acq: 9 Mar 2021 16:41



Tgt Ion:105 Resp: 493187  
 Ion Ratio Lower Upper  
 105 100  
 120 44.7 22.4 67.0

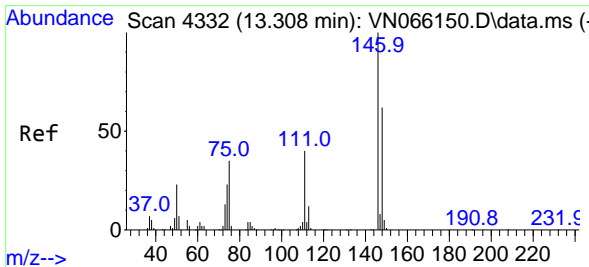
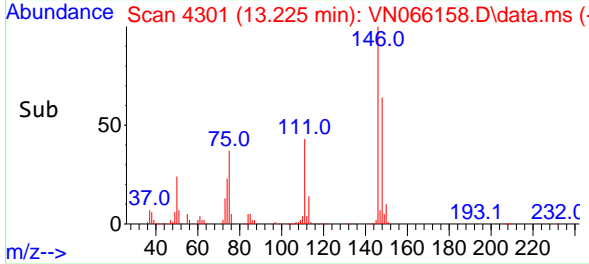
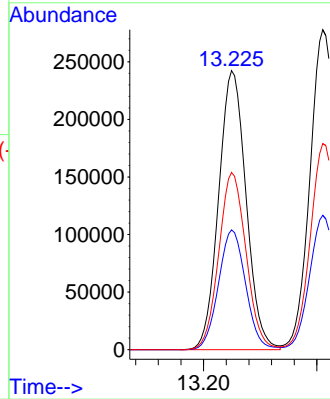
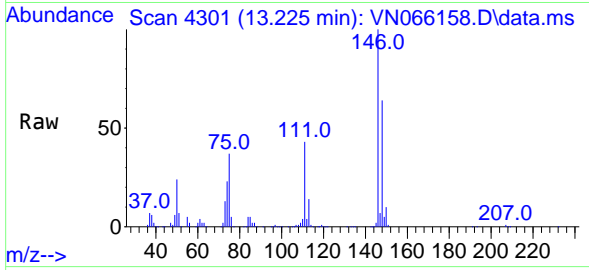




#87  
 1,3-Dichlorobenzene  
 Concen: 84.29 ug/l  
 RT: 13.225 min Scan# 4301  
 Delta R.T. -0.002 min  
 Lab File: VN066158.D  
 Acq: 9 Mar 2021 16:41

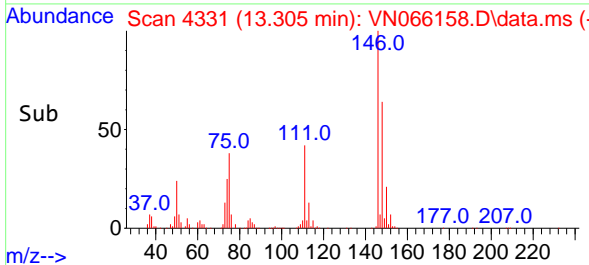
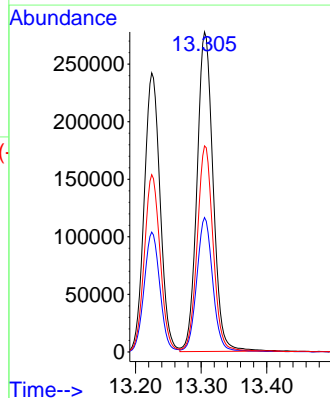
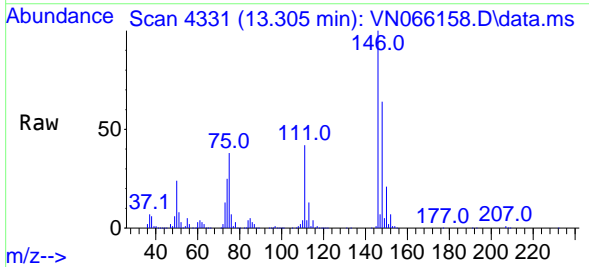
Instrument :  
 MSVOA\_N  
 ClientSampled :  
 PT-VOA-WP

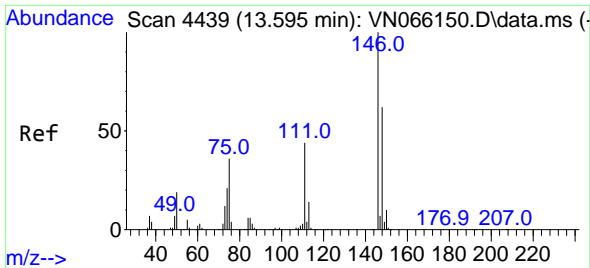
Tgt Ion:146 Resp: 407476  
 Ion Ratio Lower Upper  
 146 100  
 111 42.5 19.5 58.5  
 148 63.2 32.3 96.9



#88  
 1,4-Dichlorobenzene  
 Concen: 96.90 ug/l  
 RT: 13.305 min Scan# 4331  
 Delta R.T. -0.003 min  
 Lab File: VN066158.D  
 Acq: 9 Mar 2021 16:41

Tgt Ion:146 Resp: 472605  
 Ion Ratio Lower Upper  
 146 100  
 111 41.0 19.0 57.0  
 148 63.2 31.8 95.3

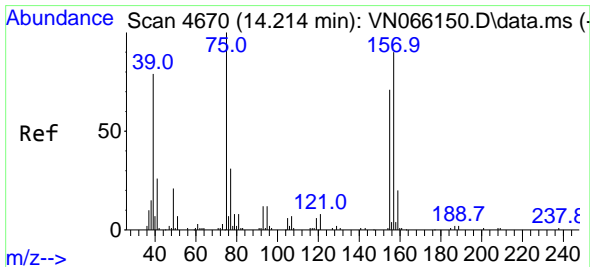
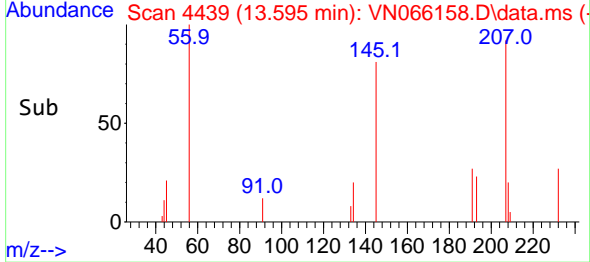
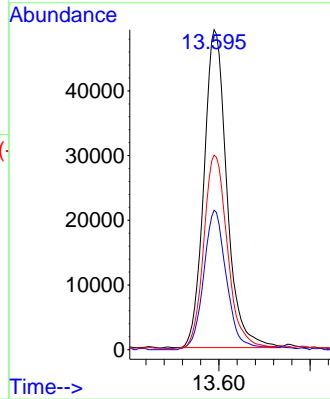
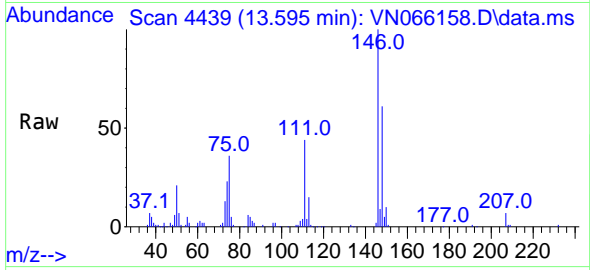




#91  
 1,2-Dichlorobenzene  
 Concen: 17.87 ug/l  
 RT: 13.595 min Scan# 4439  
 Delta R.T. -0.000 min  
 Lab File: VN066158.D  
 Acq: 9 Mar 2021 16:41

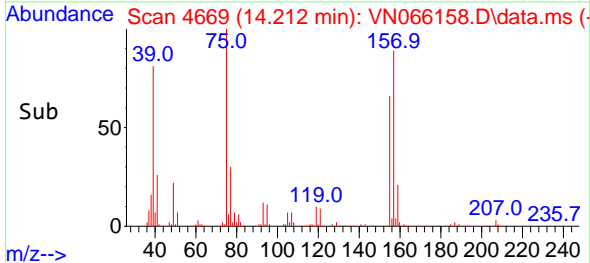
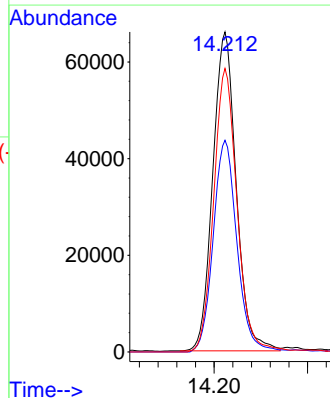
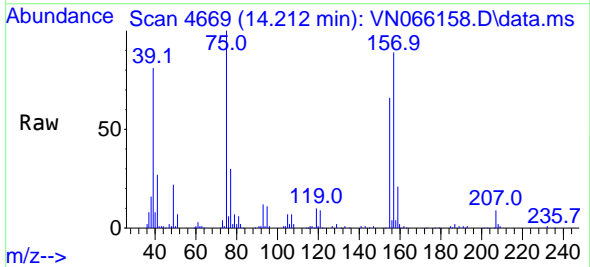
Instrument :  
 MSVOA\_N  
 ClientSampled :  
 PT-VOA-WP

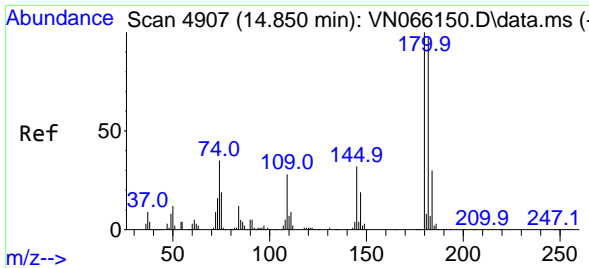
Tgt Ion:146 Resp: 85822  
 Ion Ratio Lower Upper  
 146 100  
 111 44.6 20.1 60.3  
 148 63.3 32.0 96.0



#92  
 1,2-Dibromo-3-Chloropropane  
 Concen: 110.20 ug/l  
 RT: 14.212 min Scan# 4669  
 Delta R.T. -0.002 min  
 Lab File: VN066158.D  
 Acq: 9 Mar 2021 16:41

Tgt Ion: 75 Resp: 114802  
 Ion Ratio Lower Upper  
 75 100  
 155 67.4 44.1 132.4  
 157 88.7 56.0 168.2

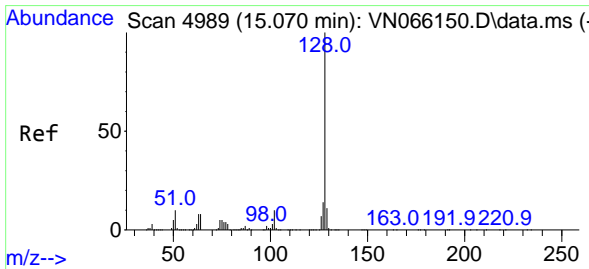
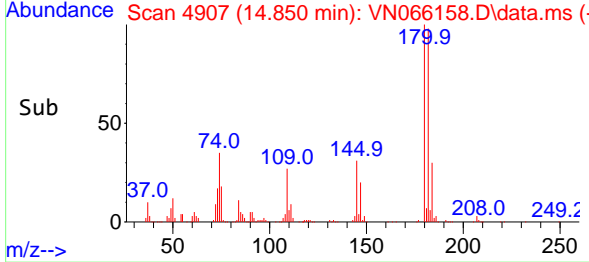
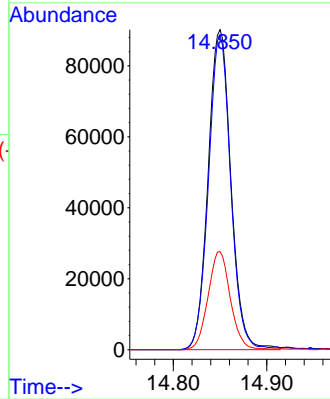
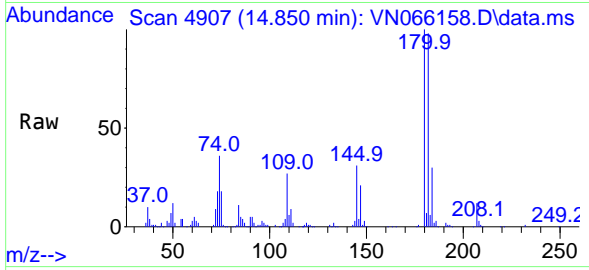




#93  
 1,2,4-Trichlorobenzene  
 Concen: 49.68 ug/l  
 RT: 14.850 min Scan# 4907  
 Delta R.T. -0.000 min  
 Lab File: VN066158.D  
 Acq: 9 Mar 2021 16:41

Instrument :  
 MSVOA\_N  
 ClientSampled :  
 PT-VOA-WP

Tgt Ion	Resp	Lower	Upper
180	153061		
180	100		
182	95.5	47.3	142.0
145	30.0	15.6	46.8



#95  
 Naphthalene  
 Concen: 106.77 ug/l  
 RT: 15.067 min Scan# 4988  
 Delta R.T. -0.003 min  
 Lab File: VN066158.D  
 Acq: 9 Mar 2021 16:41

Tgt Ion	Resp	Lower	Upper
128	968729		
128	100		
127	13.2	10.2	15.2
129	10.8	8.6	13.0

