

Data Path : Z:\voasrv\HPCHEM1\MSVOA\_N\Data\VN030922\  
 Data File : VN071222.D  
 Acq On : 10 Mar 2022 09:22  
 Operator : JC\MD  
 Sample : PB143182TB  
 Misc : 5.0mL/MSVOA\_N/WATER  
 ALS Vial : 22 Sample Multiplier: 1

Instrument :  
 MSVOA\_N  
 ClientSampleId :

Quant Time: Mar 11 00:30:22 2022  
 Quant Method : Z:\voasrv\HPCHEM1\MSVOA\_N\methods\82N030722W.M  
 Quant Title : SW846 8260  
 QLast Update : Tue Mar 08 06:52:46 2022  
 Response via : Initial Calibration

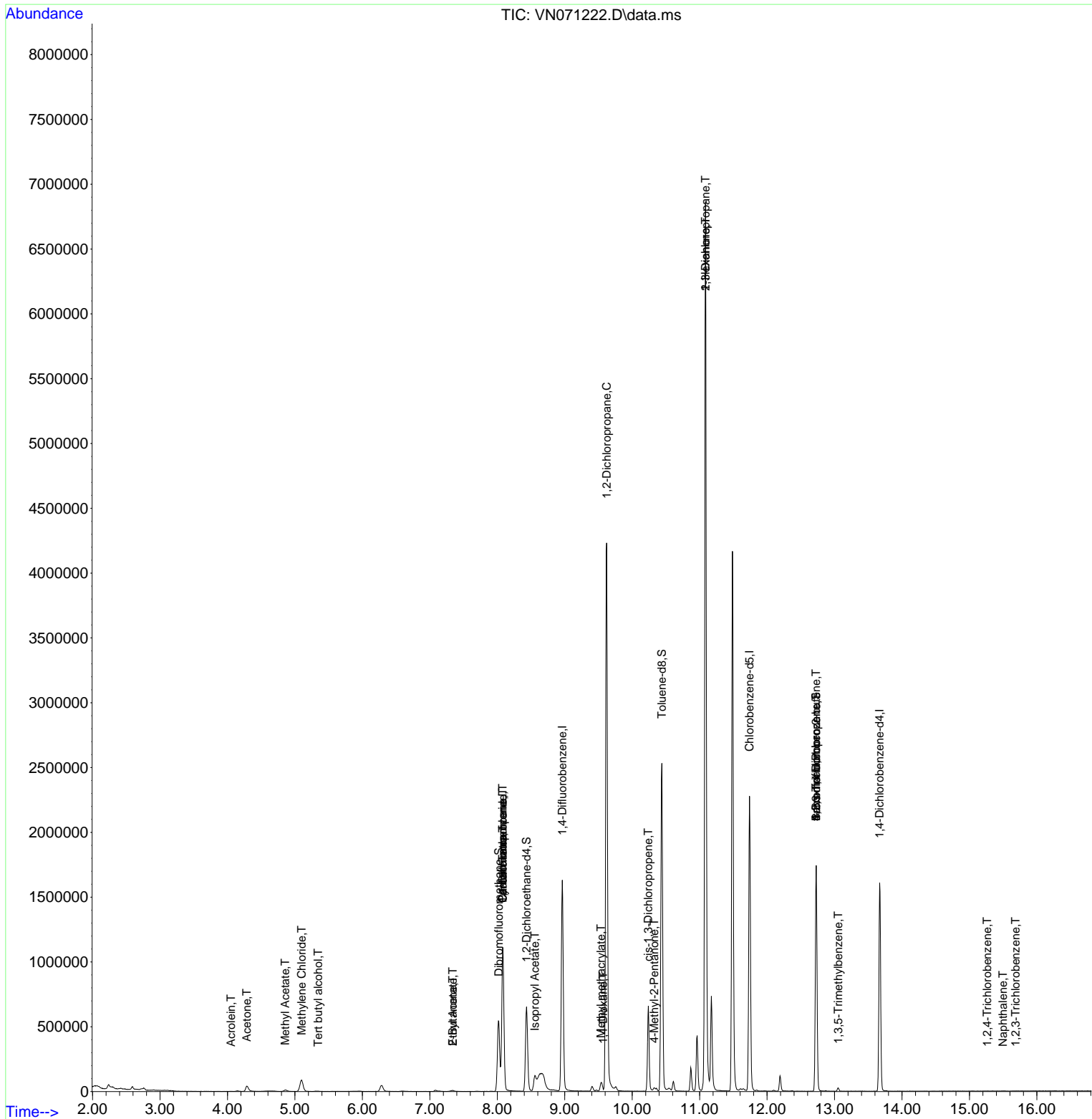
| Compound                      | R.T.   | QIon           | Response | Conc      | Units    | Dev(Min) |
|-------------------------------|--------|----------------|----------|-----------|----------|----------|
| -----                         |        |                |          |           |          |          |
| Internal Standards            |        |                |          |           |          |          |
| 1) Pentafluorobenzene         | 8.081  | 168            | 851667   | 50.000    | ug/l     | 0.00     |
| 34) 1,4-Difluorobenzene       | 8.963  | 114            | 1409198  | 50.000    | ug/l     | 0.00     |
| 63) Chlorobenzene-d5          | 11.739 | 117            | 1308974  | 50.000    | ug/l     | 0.00     |
| 72) 1,4-Dichlorobenzene-d4    | 13.668 | 152            | 456932   | 50.000    | ug/l     | 0.00     |
| System Monitoring Compounds   |        |                |          |           |          |          |
| 33) 1,2-Dichloroethane-d4     | 8.433  | 65             | 538203   | 46.109    | ug/l     | 0.00     |
| Spiked Amount                 | 50.000 | Range 61 - 141 | Recovery | =         | 92.220%  |          |
| 35) Dibromofluoromethane      | 8.022  | 113            | 410826   | 46.199    | ug/l     | 0.00     |
| Spiked Amount                 | 50.000 | Range 69 - 133 | Recovery | =         | 92.400%  |          |
| 50) Toluene-d8                | 10.439 | 98             | 1740300  | 48.606    | ug/l     | 0.00     |
| Spiked Amount                 | 50.000 | Range 65 - 126 | Recovery | =         | 97.220%  |          |
| 62) 4-Bromofluorobenzene      | 12.727 | 95             | 614734   | 50.703    | ug/l     | 0.00     |
| Spiked Amount                 | 50.000 | Range 58 - 135 | Recovery | =         | 101.400% |          |
| Target Compounds              |        |                |          |           |          |          |
|                               |        |                |          |           |          | Qvalue   |
| 5) Bromomethane               | 2.851  | 94             | 766      | Below Cal |          | 95       |
| 11) Tert butyl alcohol        | 5.345  | 59             | 1791     | 0.781     | ug/l #   | 71       |
| 13) Acrolein                  | 4.051  | 56             | 1100     | 0.453     | ug/l #   | 42       |
| 16) Acetone                   | 4.287  | 43             | 80316    | 14.142    | ug/l     | 99       |
| 18) Methyl Acetate            | 4.857  | 43             | 26127    | 2.167     | ug/l #   | 71       |
| 20) Methylene Chloride        | 5.098  | 84             | 69338    | 7.011     | ug/l     | 91       |
| 25) 2-Butanone                | 7.339  | 43             | 12939    | 1.414     | ug/l     | 94       |
| 31) Cyclohexane               | 8.081  | 56             | 17922    | 0.961     | ug/l #   | 1        |
| 36) 1,1-Dichloropropene       | 8.081  | 75             | 67316    | 4.725     | ug/l #   | 48       |
| 37) Ethyl Acetate             | 7.339  | 43             | 12939    | 0.660     | ug/l #   | 68       |
| 38) Carbon Tetrachloride      | 8.081  | 117            | 83716    | 6.075     | ug/l #   | 16       |
| 43) Isopropyl Acetate         | 8.557  | 43             | 154066   | 5.254     | ug/l #   | 75       |
| 45) 1,2-Dichloropropane       | 9.622  | 63             | 5504     | 0.478     | ug/l #   | 44       |
| 48) Methyl methacrylate       | 9.539  | 41             | 19427    | 1.430     | ug/l #   | 8        |
| 49) 1,4-Dioxane               | 9.569  | 88             | 67       | 0.284     | ug/l #   | 1        |
| 51) 4-Methyl-2-Pentanone      | 10.327 | 43             | 18874    | 1.037     | ug/l     | 90       |
| 54) cis-1,3-Dichloropropene   | 10.239 | 75             | 113179   | 6.556     | ug/l #   | 60       |
| 57) 1,3-Dichloropropane       | 11.086 | 76             | 71790    | 3.776     | ug/l #   | 43       |
| 59) 2-Hexanone                | 11.086 | 43             | 1114211  | 89.736    | ug/l #   | 49       |
| 71) Bromoform                 | 12.727 | 173            | 3606     | 0.461     | ug/l #   | 1        |
| 75) 1,1,2,2-Tetrachloroethane | 12.727 | 83             | 407      | Below Cal | #        | 1        |
| 76) 1,2,3-Trichloropropane    | 12.727 | 75             | 317204   | 27.365    | ug/l #   | 1        |
| 80) 1,3,5-Trimethylbenzene    | 13.057 | 105            | 11818    | 0.345     | ug/l     | 100      |
| 81) trans-1,4-Dichloro-2-b... | 12.727 | 75             | 317204   | 75.043    | ug/l #   | 5        |
| 93) 1,2,4-Trichlorobenzene    | 15.262 | 180            | 150      | 3.008     | ug/l #   | 12       |
| 95) Naphthalene               | 15.498 | 128            | 1507     | 5.132     | ug/l #   | 75       |
| 96) 1,2,3-Trichlorobenzene    | 15.686 | 180            | 56       | 2.739     | ug/l #   | 67       |

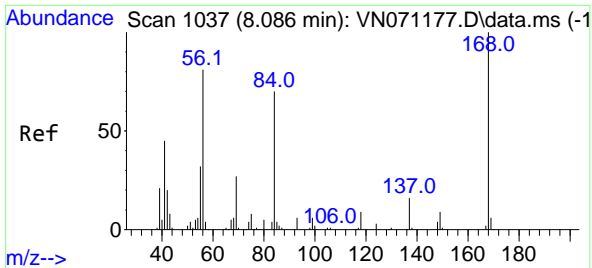
(#) = qualifier out of range (m) = manual integration (+) = signals summed

Data Path : Z:\voasrv\HPCHEM1\MSVOA\_N\Data\VN030922\  
 Data File : VN071222.D  
 Acq On : 10 Mar 2022 09:22  
 Operator : JC\MD  
 Sample : PB143182TB  
 Misc : 5.0mL/MSVOA\_N/WATER  
 ALS Vial : 22 Sample Multiplier: 1

Instrument :  
 MSVOA\_N  
 ClientSampleId :

Quant Time: Mar 11 00:30:22 2022  
 Quant Method : Z:\voasrv\HPCHEM1\MSVOA\_N\methods\82N030722W.M  
 Quant Title : SW846 8260  
 QLast Update : Tue Mar 08 06:52:46 2022  
 Response via : Initial Calibration

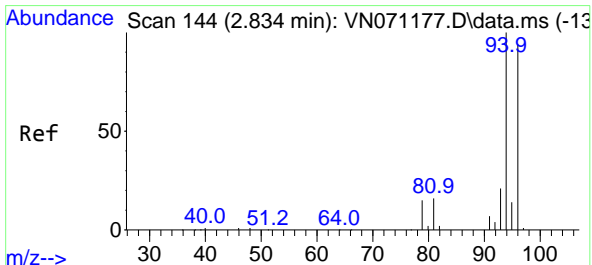
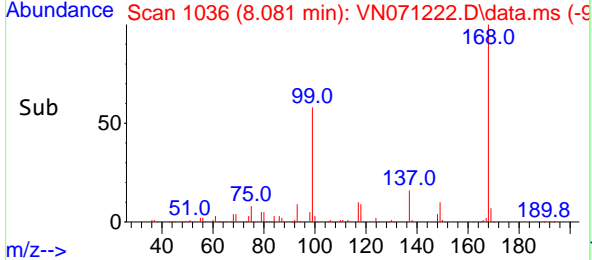
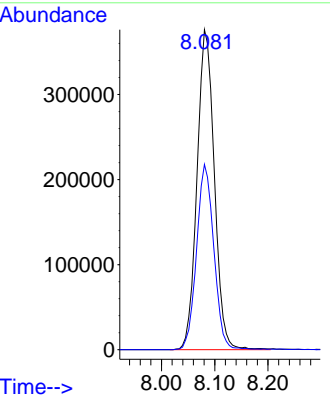
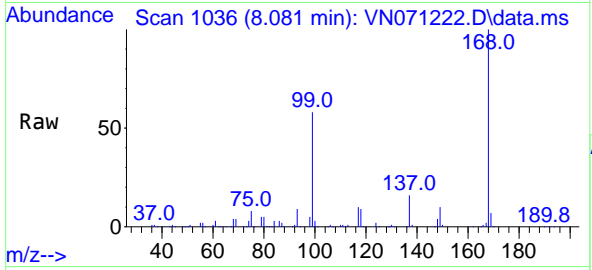




#1  
 Pentafluorobenzene  
 Concen: 50.000 ug/l  
 RT: 8.081 min Scan# 10  
 Delta R.T. -0.005 min  
 Lab File: VN071222.D  
 Acq: 10 Mar 2022 09:22

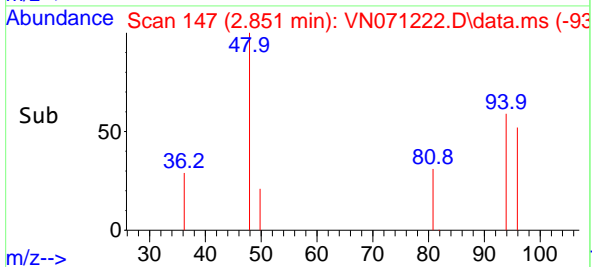
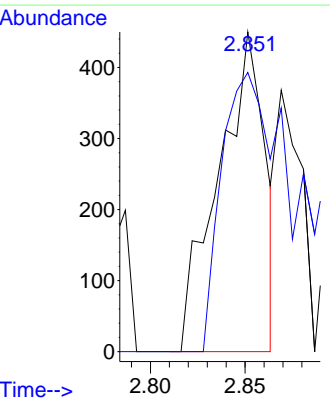
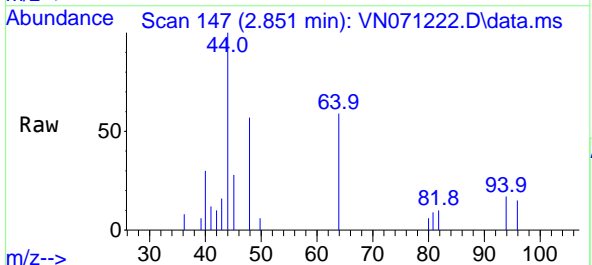
Instrument : MSVOA\_N  
 ClientSampleId :

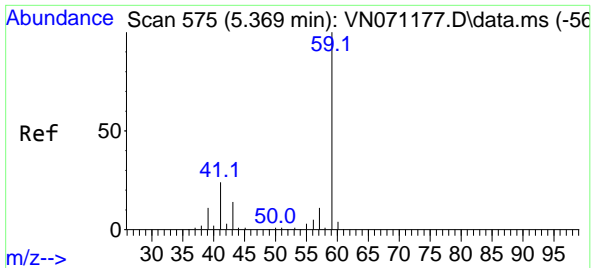
Tgt Ion:168 Resp: 851667  
 Ion Ratio Lower Upper  
 168 100  
 99 57.9 41.3 61.9



#5  
 Bromomethane  
 Concen: Below Cal  
 RT: 2.851 min Scan# 147  
 Delta R.T. 0.017 min  
 Lab File: VN071222.D  
 Acq: 10 Mar 2022 09:22

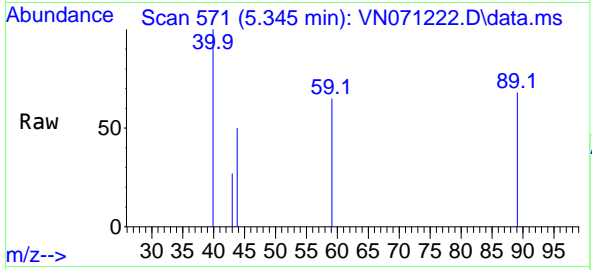
Tgt Ion: 94 Resp: 766  
 Ion Ratio Lower Upper  
 94 100  
 96 87.3 73.8 110.8



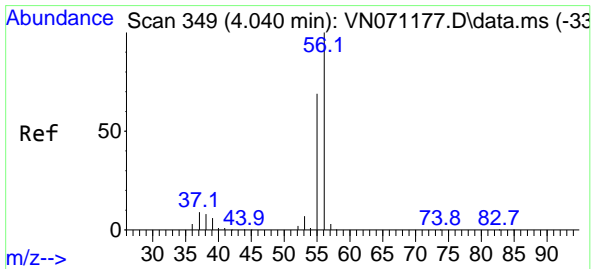
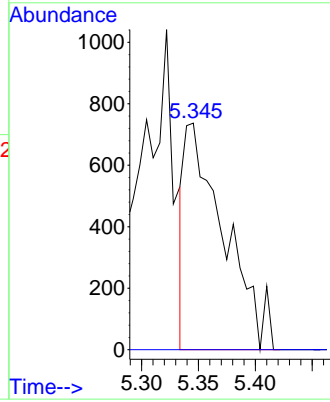
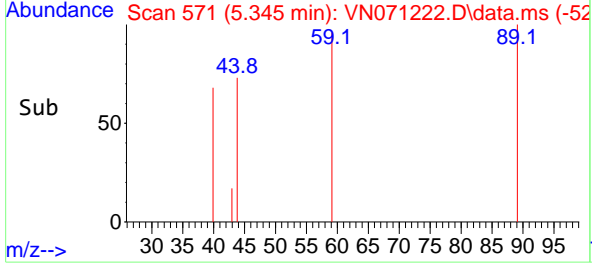


#11  
 Tert butyl alcohol  
 Concen: 0.781 ug/l  
 RT: 5.345 min Scan# 51  
 Delta R.T. -0.024 min  
 Lab File: VN071222.D  
 Acq: 10 Mar 2022 09:22

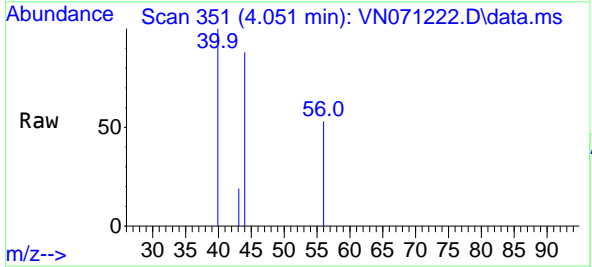
Instrument :  
 MSVOA\_N  
 ClientSampleId :



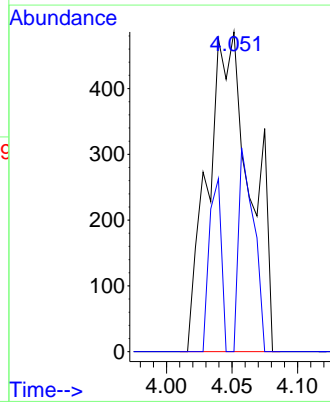
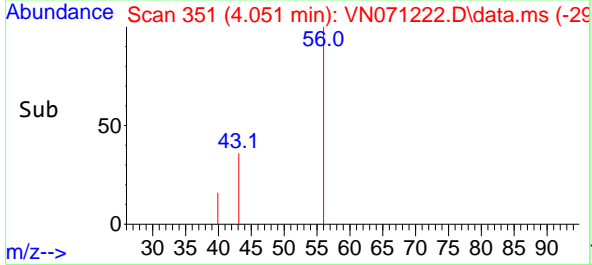
Tgt Ion: 59 Resp: 1791  
 Ion Ratio Lower Upper  
 59 100  
 57 0.0 8.7 13.1#

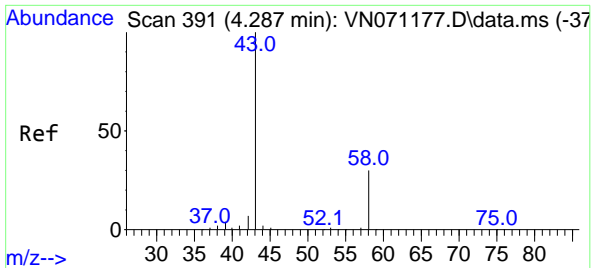


#13  
 Acrolein  
 Concen: 0.453 ug/l  
 RT: 4.051 min Scan# 351  
 Delta R.T. 0.012 min  
 Lab File: VN071222.D  
 Acq: 10 Mar 2022 09:22



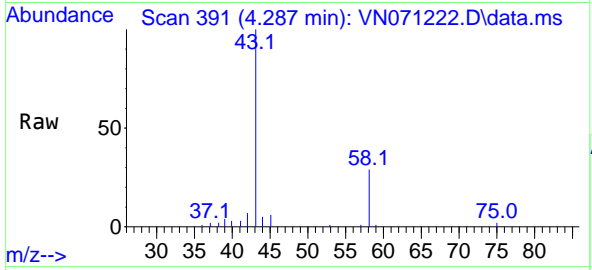
Tgt Ion: 56 Resp: 1100  
 Ion Ratio Lower Upper  
 56 100  
 55 22.9 56.6 85.0#



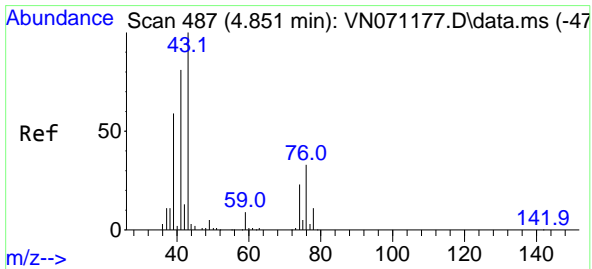
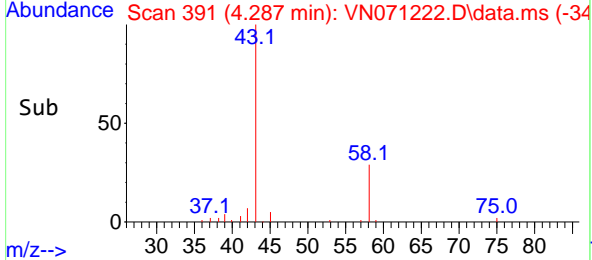
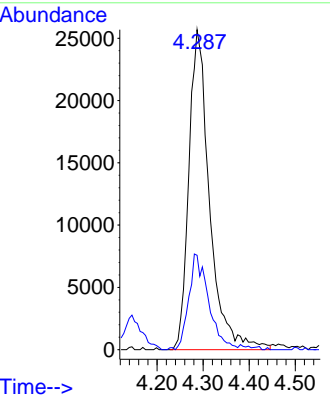


#16  
 Acetone  
 Concen: 14.142 ug/l  
 RT: 4.287 min Scan# 391  
 Delta R.T. -0.000 min  
 Lab File: VN071222.D  
 Acq: 10 Mar 2022 09:22

Instrument : MSVOA\_N  
 ClientSampleId :

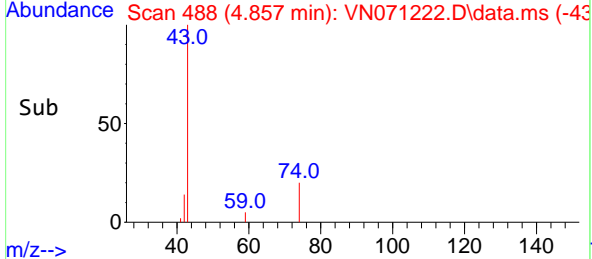
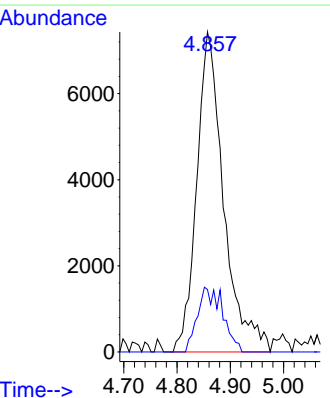
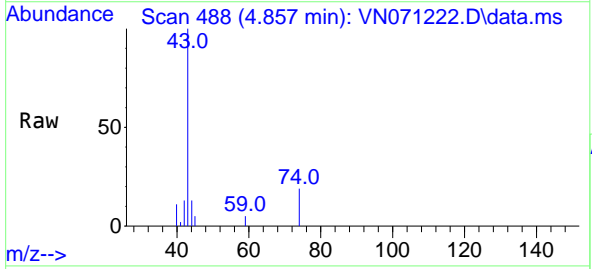


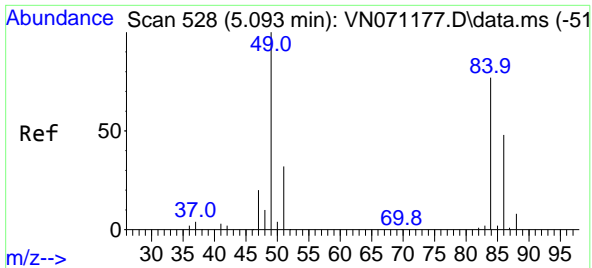
Tgt Ion: 43 Resp: 80316  
 Ion Ratio Lower Upper  
 43 100  
 58 29.5 23.1 34.7



#18  
 Methyl Acetate  
 Concen: 2.167 ug/l  
 RT: 4.857 min Scan# 488  
 Delta R.T. 0.006 min  
 Lab File: VN071222.D  
 Acq: 10 Mar 2022 09:22

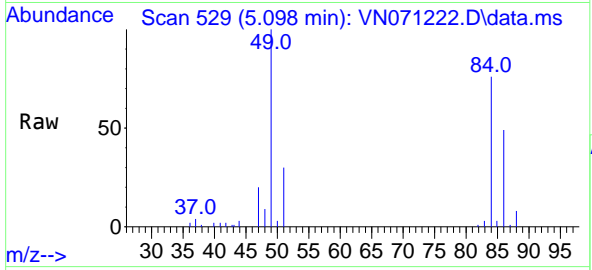
Tgt Ion: 43 Resp: 26127  
 Ion Ratio Lower Upper  
 43 100  
 74 10.1 19.4 29.2#





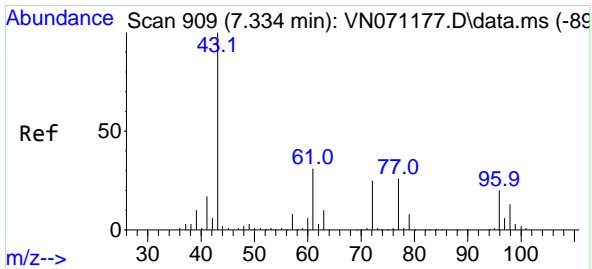
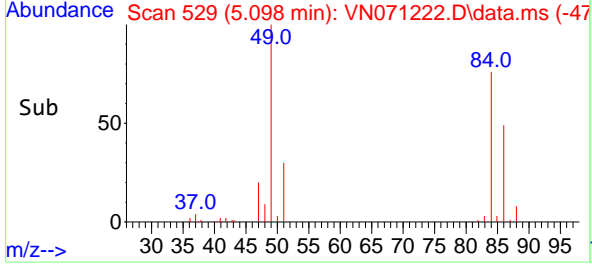
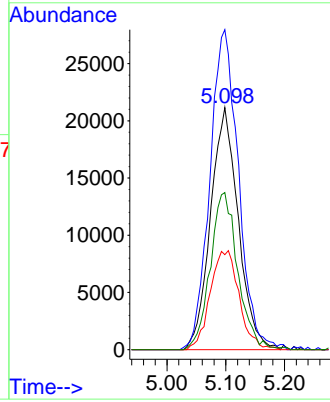
#20  
 Methylene Chloride  
 Concen: 7.011 ug/l  
 RT: 5.098 min Scan# 51  
 Delta R.T. 0.005 min  
 Lab File: VN071222.D  
 Acq: 10 Mar 2022 09:22

Instrument :  
 MSVOA\_N  
 ClientSampleId :



Tgt Ion: 84 Resp: 69338

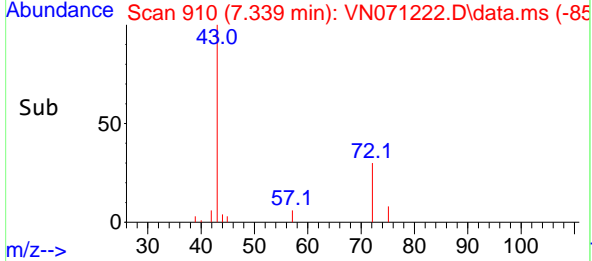
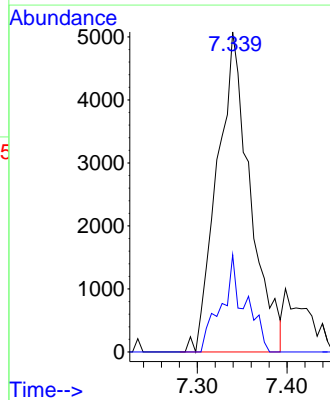
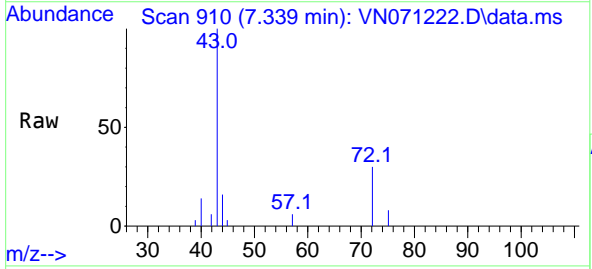
| Ion | Ratio | Lower | Upper |
|-----|-------|-------|-------|
| 84  | 100   |       |       |
| 49  | 132.2 | 93.5  | 140.3 |
| 51  | 39.3  | 29.4  | 44.2  |
| 86  | 64.9  | 53.0  | 79.4  |

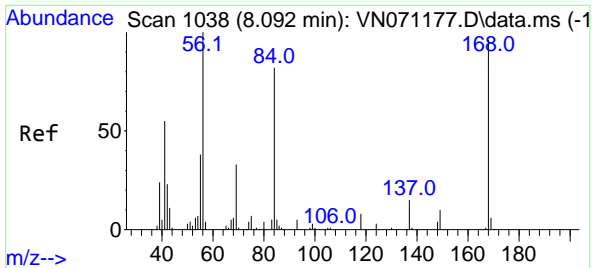


#25  
 2-Butanone  
 Concen: 1.414 ug/l  
 RT: 7.339 min Scan# 910  
 Delta R.T. 0.006 min  
 Lab File: VN071222.D  
 Acq: 10 Mar 2022 09:22

Tgt Ion: 43 Resp: 12939

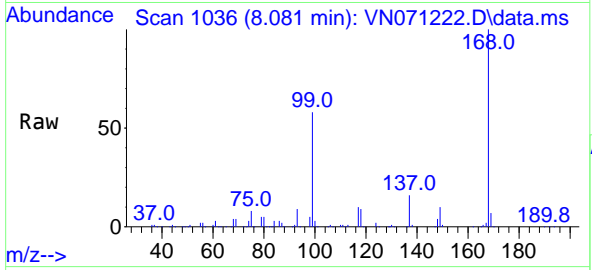
| Ion | Ratio | Lower | Upper |
|-----|-------|-------|-------|
| 43  | 100   |       |       |
| 72  | 30.4  | 21.7  | 32.5  |



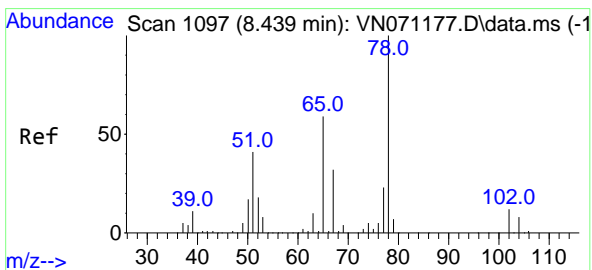
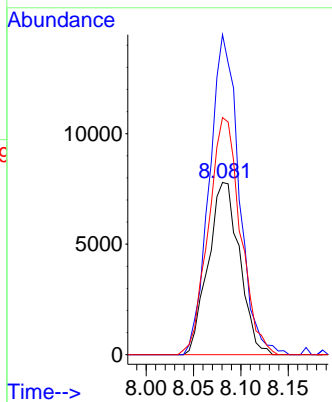
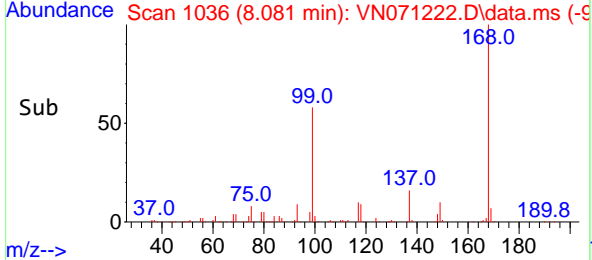


#31  
 Cyclohexane  
 Concen: 0.961 ug/l  
 RT: 8.081 min Scan# 1096  
 Delta R.T. -0.012 min  
 Lab File: VN071222.D  
 Acq: 10 Mar 2022 09:22

Instrument :  
 MSVOA\_N  
 ClientSampleId :

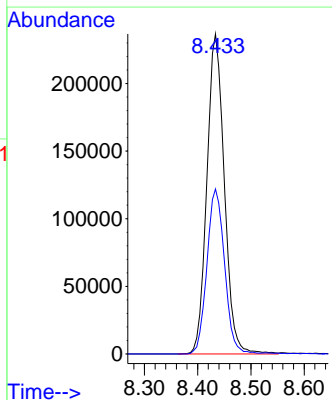
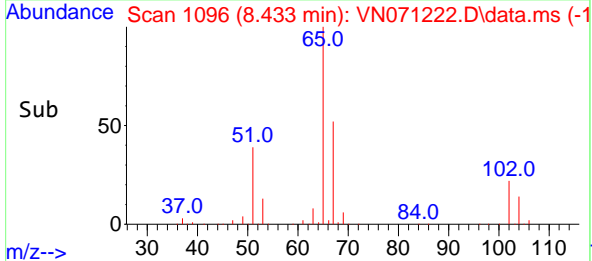
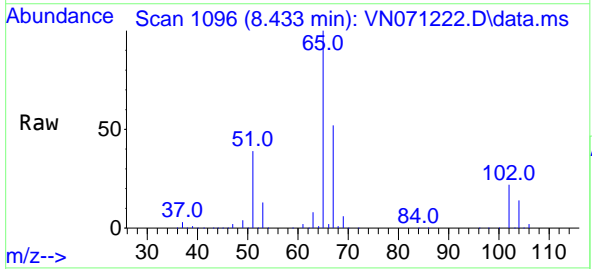


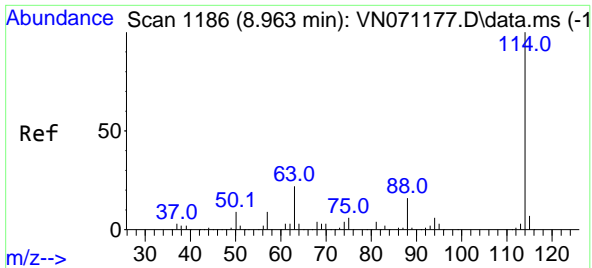
Tgt Ion: 56 Resp: 17922  
 Ion Ratio Lower Upper  
 56 100  
 69 185.9 27.1 40.7#  
 84 137.8 73.4 110.0#



#33  
 1,2-Dichloroethane-d4  
 Concen: 46.109 ug/l  
 RT: 8.433 min Scan# 1096  
 Delta R.T. -0.006 min  
 Lab File: VN071222.D  
 Acq: 10 Mar 2022 09:22

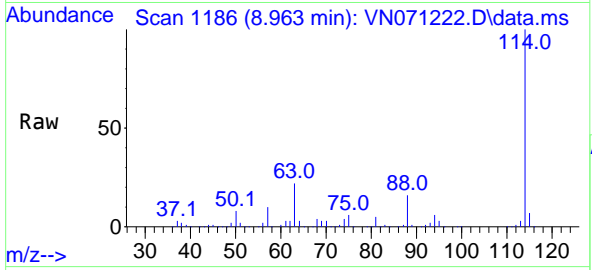
Tgt Ion: 65 Resp: 538203  
 Ion Ratio Lower Upper  
 65 100  
 67 52.0 0.0 103.0





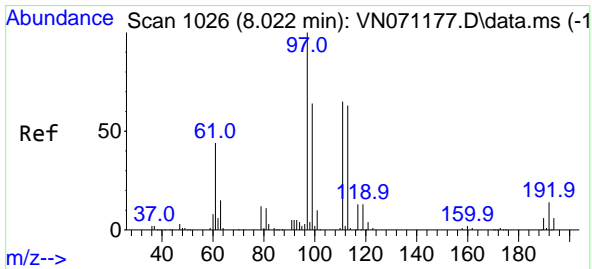
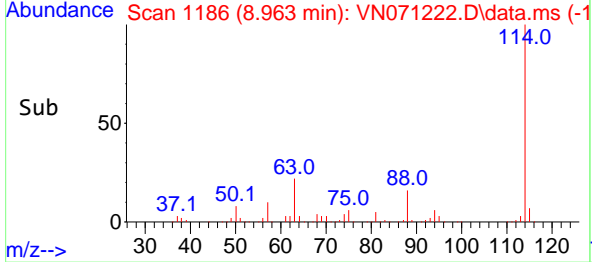
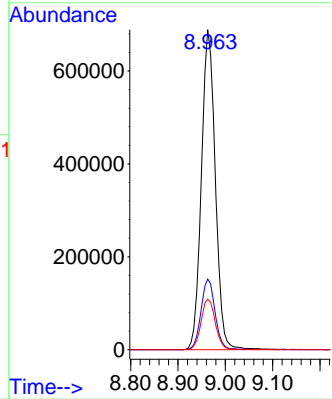
#34  
 1,4-Difluorobenzene  
 Concen: 50.000 ug/l  
 RT: 8.963 min Scan# 1186  
 Delta R.T. -0.000 min  
 Lab File: VN071222.D  
 Acq: 10 Mar 2022 09:22

Instrument : MSVOA\_N  
 ClientSampleId :

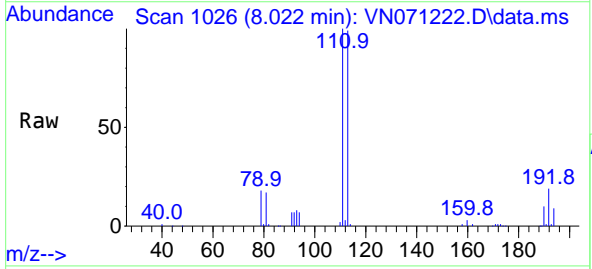


Tgt Ion:114 Resp: 1409198

| Ion | Ratio | Lower | Upper |
|-----|-------|-------|-------|
| 114 | 100   |       |       |
| 63  | 22.1  | 0.0   | 37.8  |
| 88  | 15.8  | 0.0   | 27.4  |

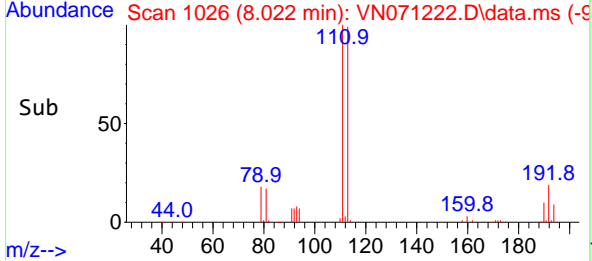
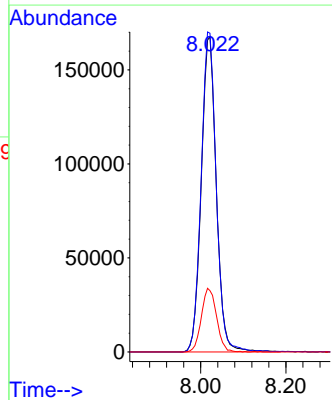


#35  
 Dibromofluoromethane  
 Concen: 46.199 ug/l  
 RT: 8.022 min Scan# 1026  
 Delta R.T. -0.000 min  
 Lab File: VN071222.D  
 Acq: 10 Mar 2022 09:22

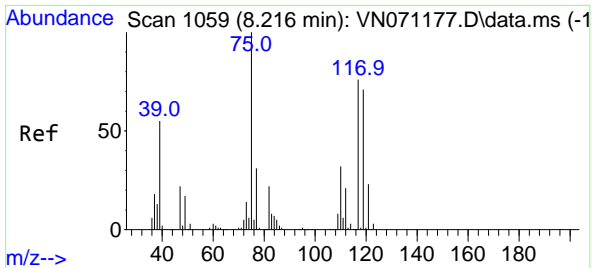


Tgt Ion:113 Resp: 410826

| Ion | Ratio | Lower | Upper |
|-----|-------|-------|-------|
| 113 | 100   |       |       |
| 111 | 101.4 | 82.2  | 123.2 |
| 192 | 20.4  | 16.9  | 25.3  |

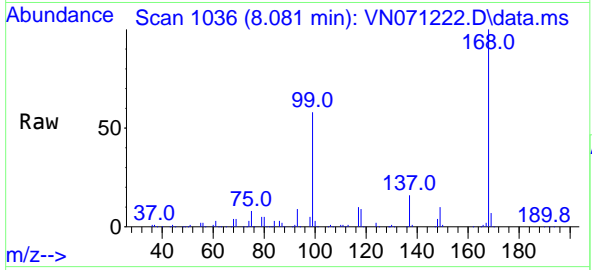






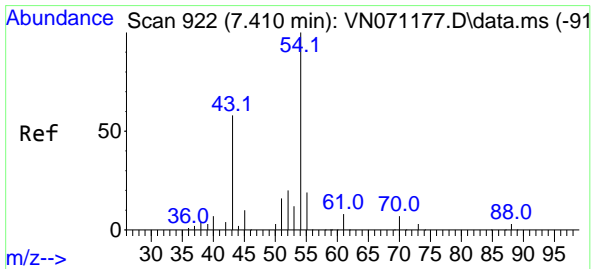
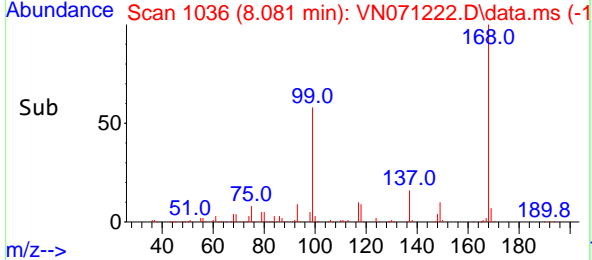
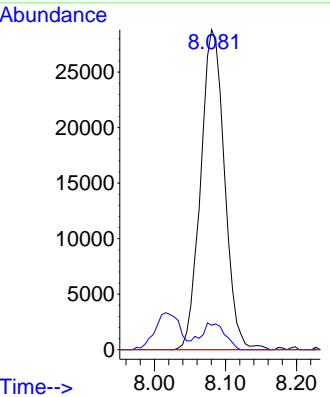
#36  
 1,1-Dichloropropene  
 Concen: 4.725 ug/l  
 RT: 8.081 min Scan# 1036  
 Delta R.T. -0.135 min  
 Lab File: VN071222.D  
 Acq: 10 Mar 2022 09:22

Instrument : MSVOA\_N  
 ClientSampleId :

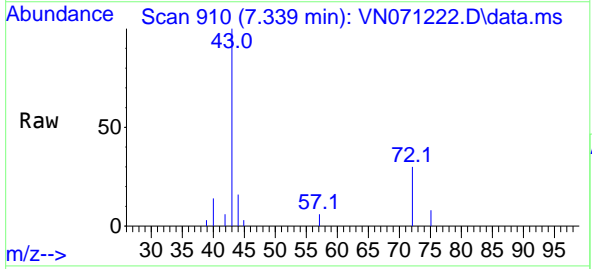


Tgt Ion: 75 Resp: 67316

| Ion | Ratio | Lower | Upper |
|-----|-------|-------|-------|
| 75  | 100   |       |       |
| 110 | 8.3   | 18.4  | 55.2# |
| 77  | 0.0   | 24.4  | 36.6# |

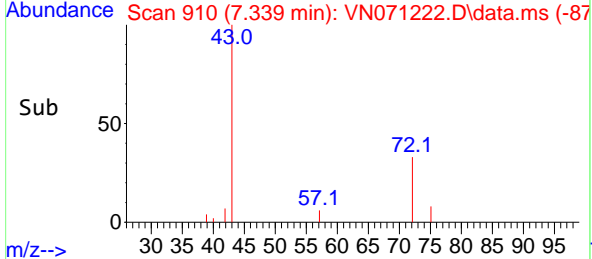
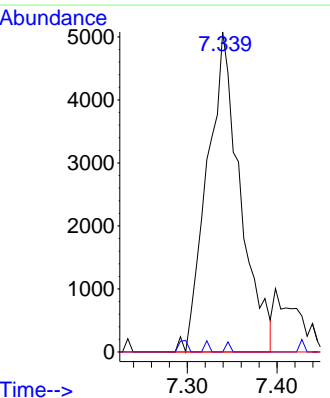


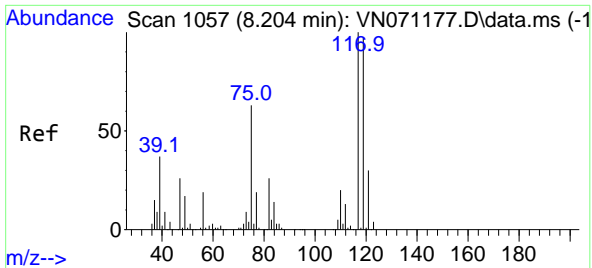
#37  
 Ethyl Acetate  
 Concen: 0.660 ug/l  
 RT: 7.339 min Scan# 910  
 Delta R.T. -0.071 min  
 Lab File: VN071222.D  
 Acq: 10 Mar 2022 09:22



Tgt Ion: 43 Resp: 12939

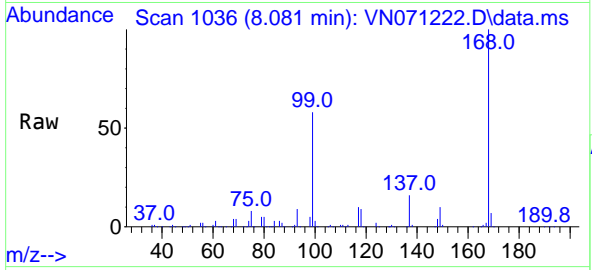
| Ion | Ratio | Lower | Upper |
|-----|-------|-------|-------|
| 43  | 100   |       |       |
| 61  | 0.0   | 11.5  | 17.3# |
| 70  | 0.0   | 7.9   | 11.9# |



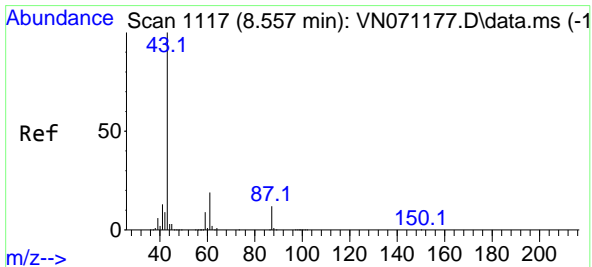
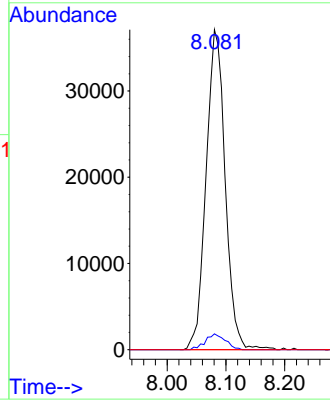
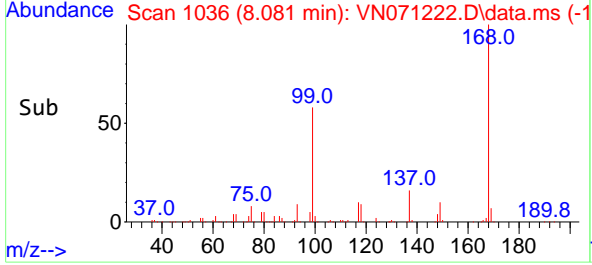


#38  
 Carbon Tetrachloride  
 Concen: 6.075 ug/l  
 RT: 8.081 min Scan# 1036  
 Delta R.T. -0.124 min  
 Lab File: VN071222.D  
 Acq: 10 Mar 2022 09:22

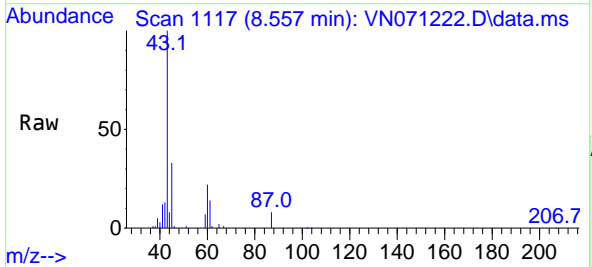
Instrument : MSVOA\_N  
 ClientSampleId :



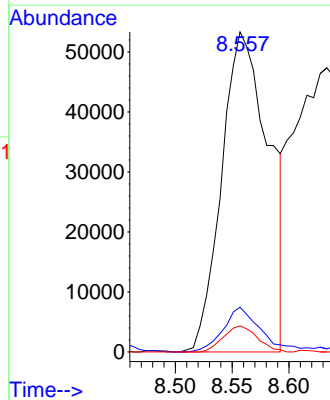
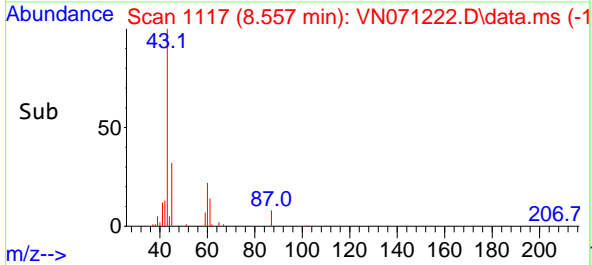
Tgt Ion: 117 Resp: 83716  
 Ion Ratio Lower Upper  
 117 100  
 119 4.9 76.1 114.1#  
 121 0.0 24.2 36.2#

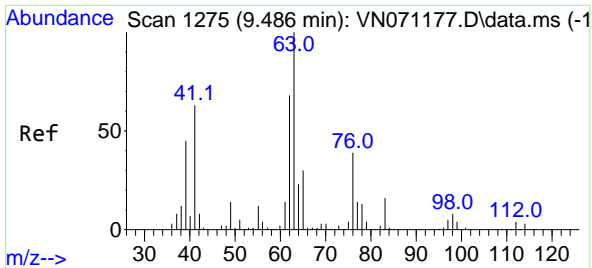


#43  
 Isopropyl Acetate  
 Concen: 5.254 ug/l  
 RT: 8.557 min Scan# 1117  
 Delta R.T. -0.000 min  
 Lab File: VN071222.D  
 Acq: 10 Mar 2022 09:22



Tgt Ion: 43 Resp: 154066  
 Ion Ratio Lower Upper  
 43 100  
 61 11.3 20.4 30.6#  
 87 5.8 11.2 16.8#

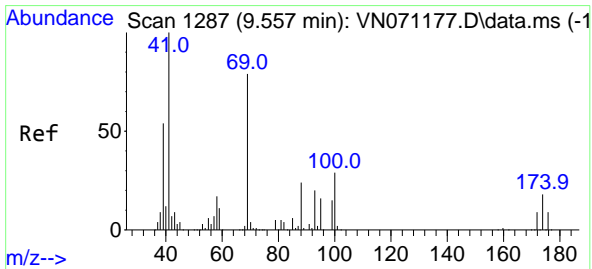
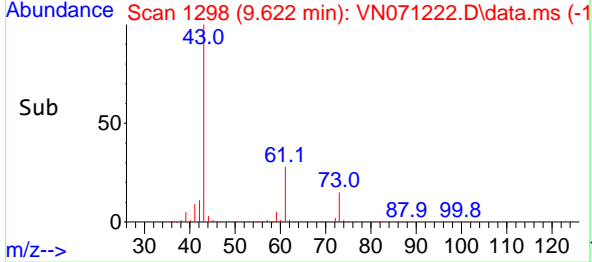
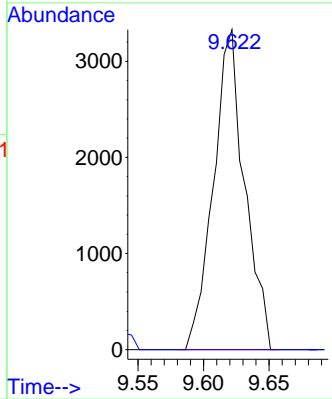
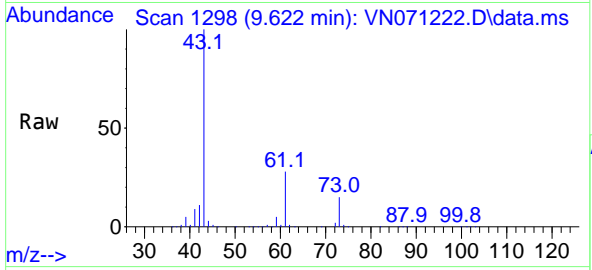




#45  
 1,2-Dichloropropane  
 Concen: 0.478 ug/l  
 RT: 9.622 min Scan# 11  
 Delta R.T. 0.136 min  
 Lab File: VN071222.D  
 Acq: 10 Mar 2022 09:22

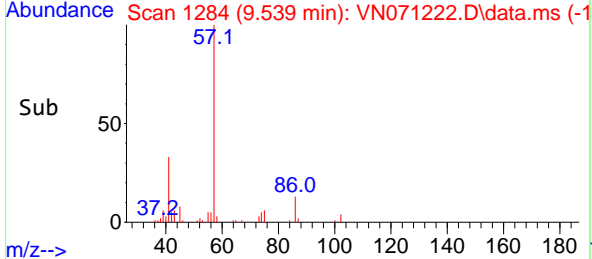
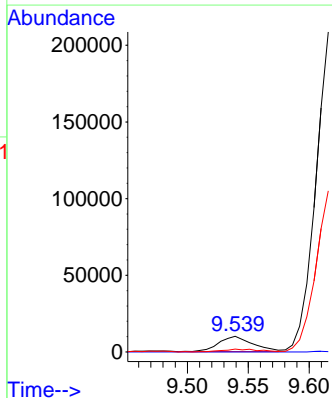
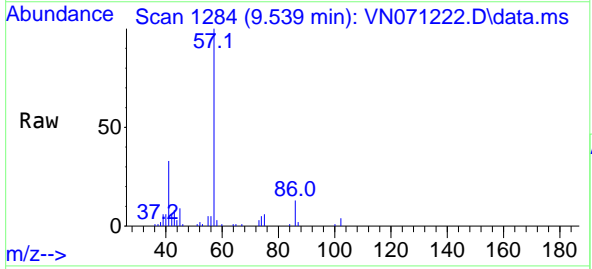
Instrument :  
 MSVOA\_N  
 ClientSampleId :

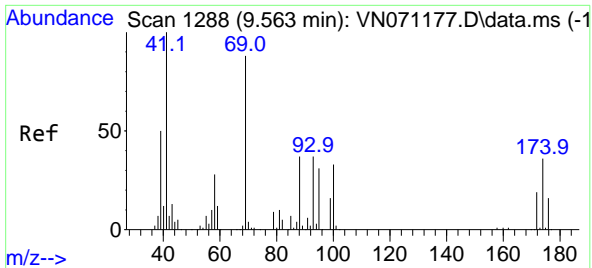
Tgt Ion: 63 Resp: 5504  
 Ion Ratio Lower Upper  
 63 100  
 65 0.0 24.7 37.1#



#48  
 Methyl methacrylate  
 Concen: 1.430 ug/l  
 RT: 9.539 min Scan# 1284  
 Delta R.T. -0.018 min  
 Lab File: VN071222.D  
 Acq: 10 Mar 2022 09:22

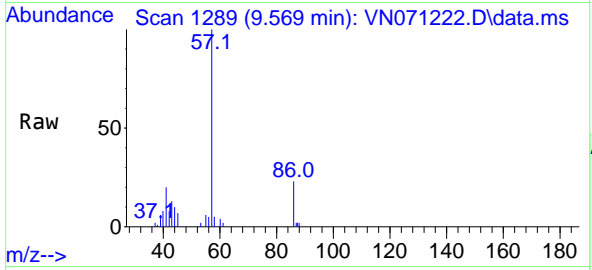
Tgt Ion: 41 Resp: 19427  
 Ion Ratio Lower Upper  
 41 100  
 69 0.0 72.4 108.6#  
 39 0.0 58.4 87.6#



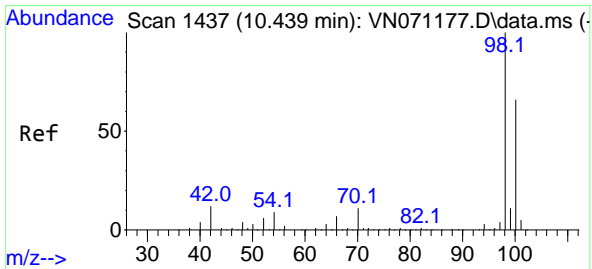
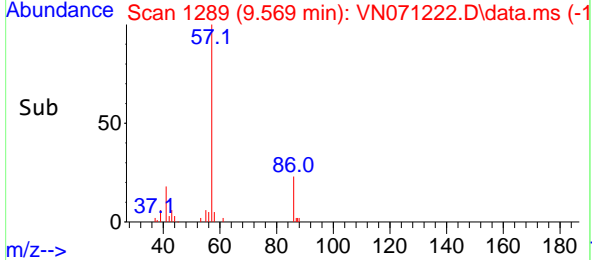
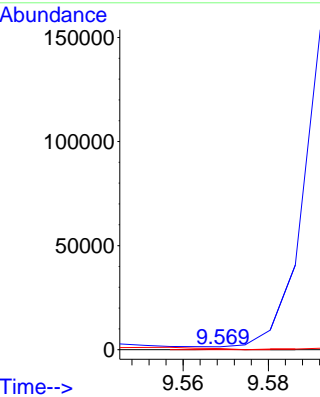


#49  
 1,4-Dioxane  
 Concen: 0.284 ug/l  
 RT: 9.569 min Scan# 1289  
 Delta R.T. 0.006 min  
 Lab File: VN071222.D  
 Acq: 10 Mar 2022 09:22

Instrument : MSVOA\_N  
 ClientSampleId :

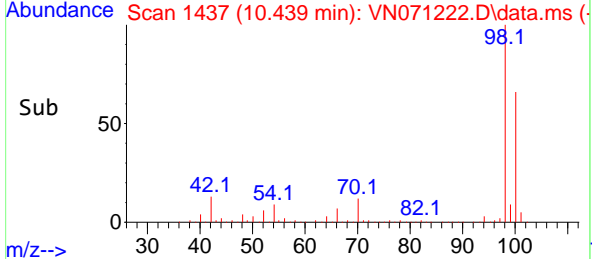
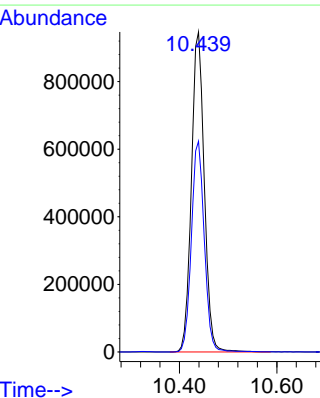
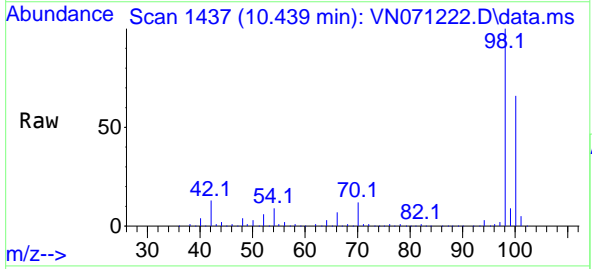


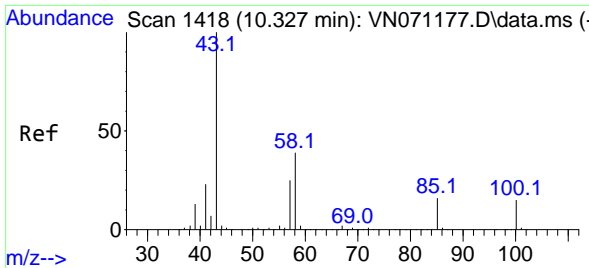
Tgt Ion: 88 Resp: 67  
 Ion Ratio Lower Upper  
 88 100  
 43 0.0 23.4 35.2#  
 58 4531.3 50.6 75.8#



#50  
 Toluene-d8  
 Concen: 48.606 ug/l  
 RT: 10.439 min Scan# 1437  
 Delta R.T. 0.000 min  
 Lab File: VN071222.D  
 Acq: 10 Mar 2022 09:22

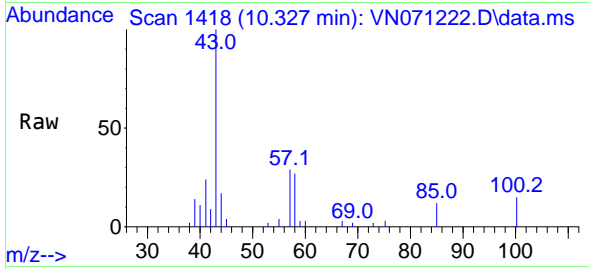
Tgt Ion: 98 Resp: 1740300  
 Ion Ratio Lower Upper  
 98 100  
 100 66.1 50.4 75.6



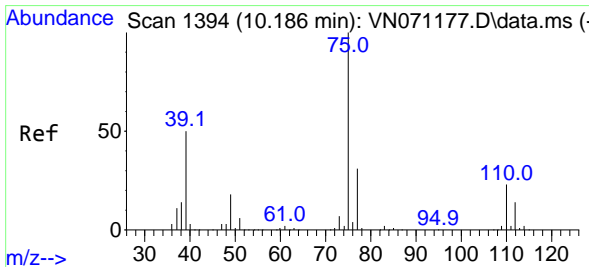
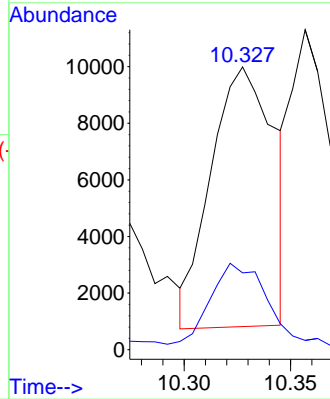
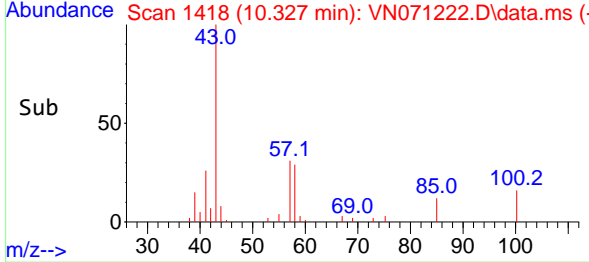


#51  
 4-Methyl-2-Pentanone  
 Concen: 1.037 ug/l  
 RT: 10.327 min Scan# 1418  
 Delta R.T. 0.000 min  
 Lab File: VN071222.D  
 Acq: 10 Mar 2022 09:22

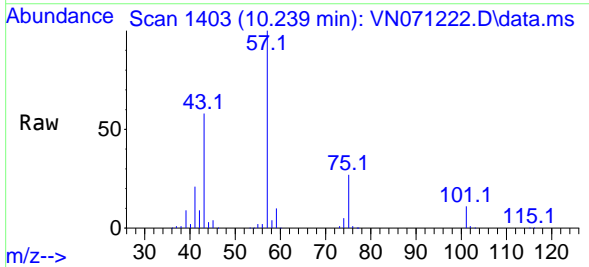
Instrument : MSVOA\_N  
 ClientSampleId :



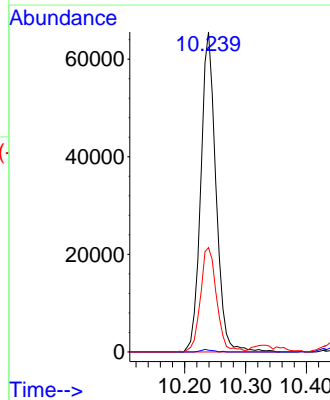
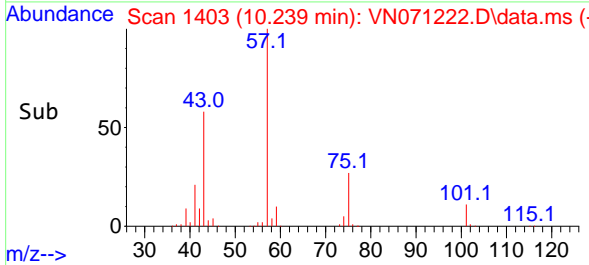
Tgt Ion: 43 Resp: 18874  
 Ion Ratio Lower Upper  
 43 100  
 58 32.1 30.4 45.6

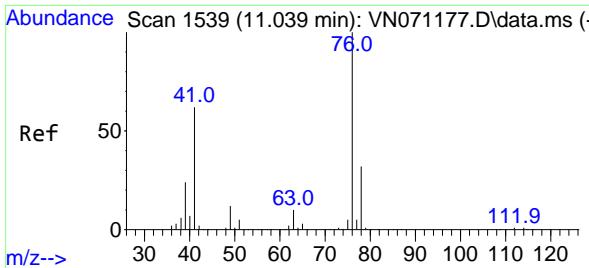


#54  
 cis-1,3-Dichloropropene  
 Concen: 6.556 ug/l  
 RT: 10.239 min Scan# 1403  
 Delta R.T. 0.053 min  
 Lab File: VN071222.D  
 Acq: 10 Mar 2022 09:22



Tgt Ion: 75 Resp: 113179  
 Ion Ratio Lower Upper  
 75 100  
 77 0.6 26.4 39.6#  
 39 32.4 42.5 63.7#

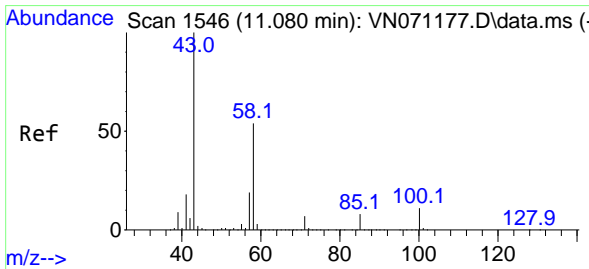
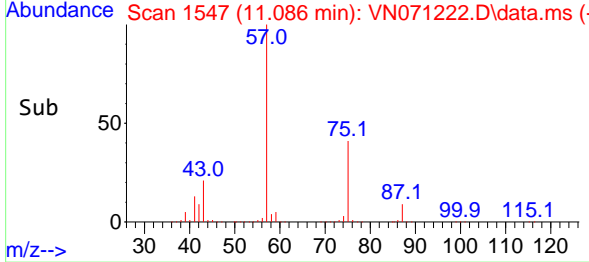
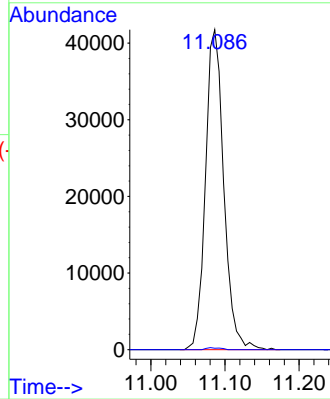
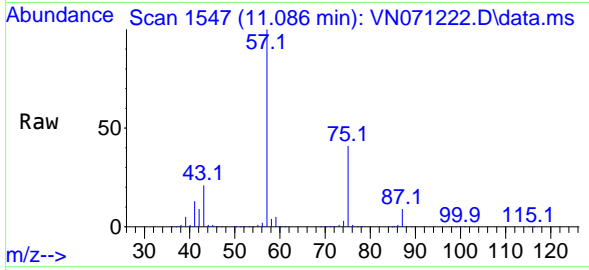




#57  
 1,3-Dichloropropane  
 Concen: 3.776 ug/l  
 RT: 11.086 min Scan# 1547  
 Delta R.T. 0.047 min  
 Lab File: VN071222.D  
 Acq: 10 Mar 2022 09:22

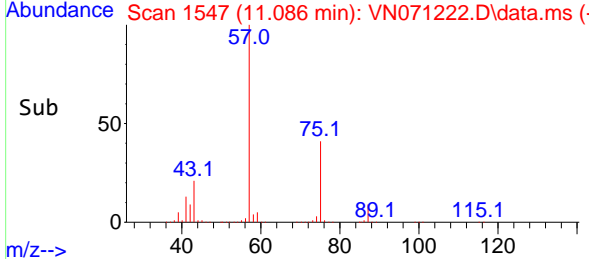
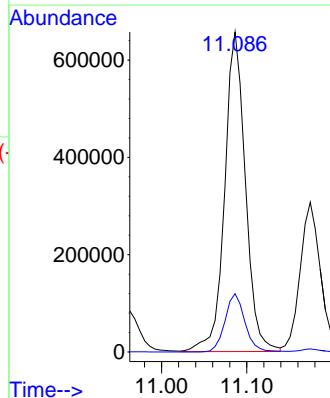
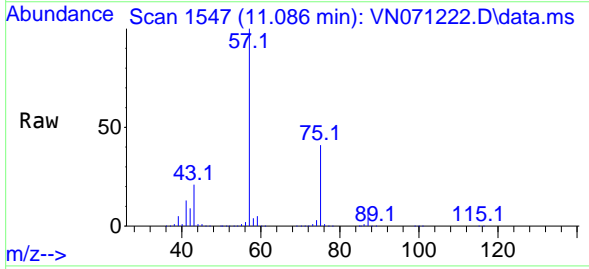
Instrument : MSVOA\_N  
 ClientSampleId :

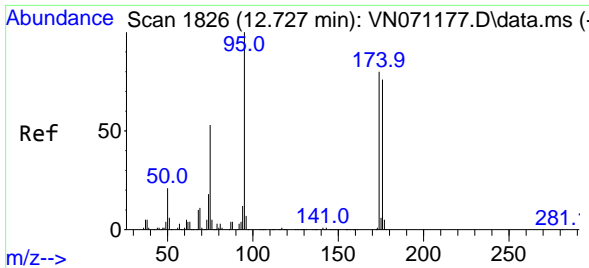
Tgt Ion: 76 Resp: 71790  
 Ion Ratio Lower Upper  
 76 100  
 78 0.5 25.7 38.5#



#59  
 2-Hexanone  
 Concen: 89.736 ug/l  
 RT: 11.086 min Scan# 1547  
 Delta R.T. 0.006 min  
 Lab File: VN071222.D  
 Acq: 10 Mar 2022 09:22

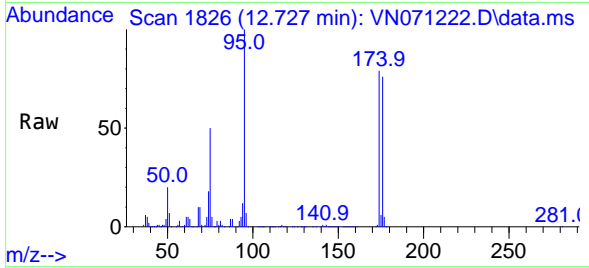
Tgt Ion: 43 Resp: 1114211  
 Ion Ratio Lower Upper  
 43 100  
 58 17.5 26.9 80.7#



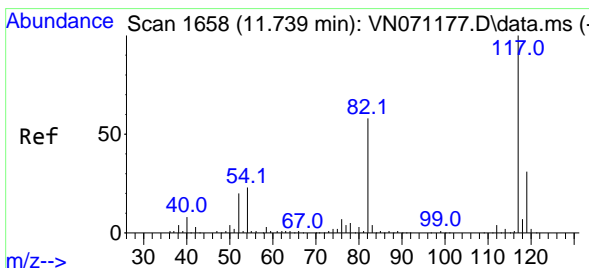
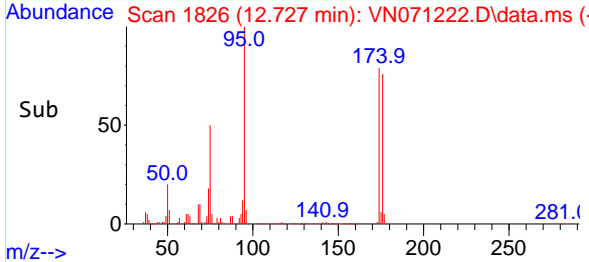
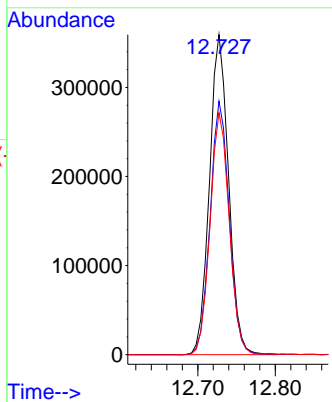


#62  
 4-Bromofluorobenzene  
 Concen: 50.703 ug/l  
 RT: 12.727 min Scan# 1826  
 Delta R.T. 0.000 min  
 Lab File: VN071222.D  
 Acq: 10 Mar 2022 09:22

Instrument : MSVOA\_N  
 ClientSampleId :

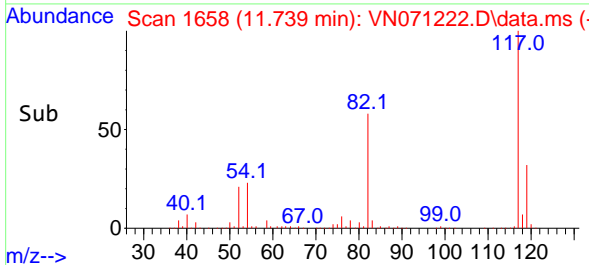
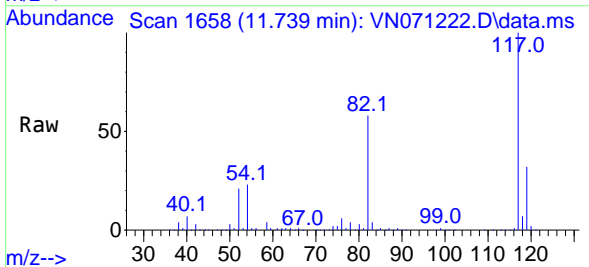
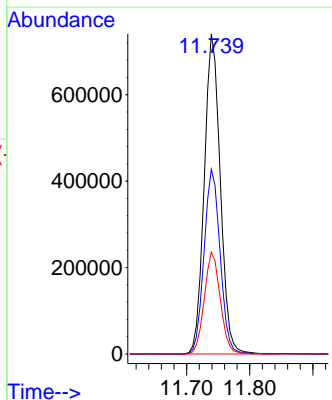


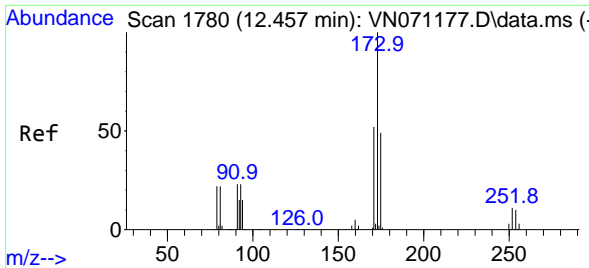
Tgt Ion: 95 Resp: 614734  
 Ion Ratio Lower Upper  
 95 100  
 174 79.6 0.0 187.2  
 176 75.9 0.0 181.4



#63  
 Chlorobenzene-d5  
 Concen: 50.000 ug/l  
 RT: 11.739 min Scan# 1658  
 Delta R.T. -0.000 min  
 Lab File: VN071222.D  
 Acq: 10 Mar 2022 09:22

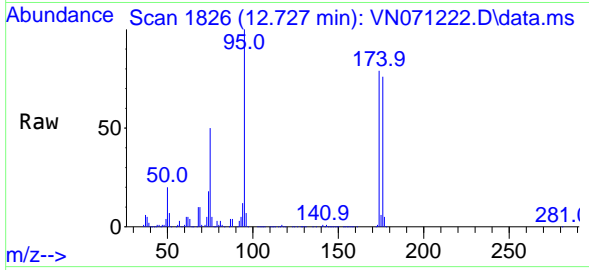
Tgt Ion: 117 Resp: 1308974  
 Ion Ratio Lower Upper  
 117 100  
 82 57.7 42.4 63.6  
 119 31.8 25.4 38.2



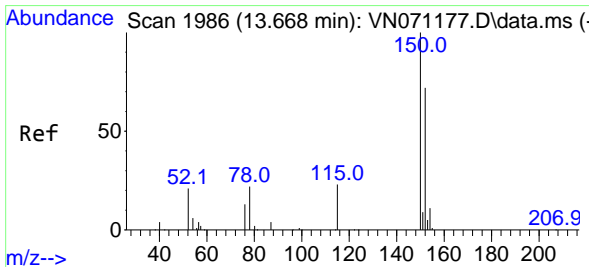
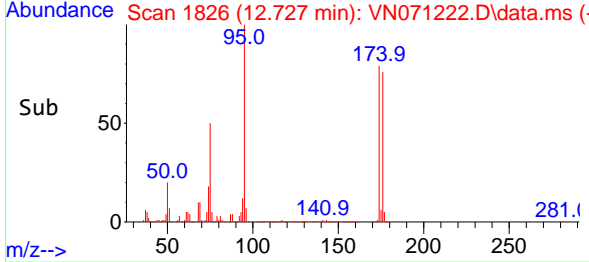
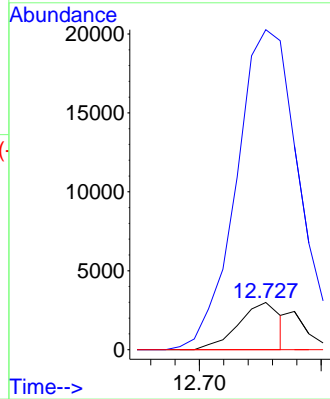


#71  
 Bromoform  
 Concen: 0.461 ug/l  
 RT: 12.727 min Scan# 1826  
 Delta R.T. 0.270 min  
 Lab File: VN071222.D  
 Acq: 10 Mar 2022 09:22

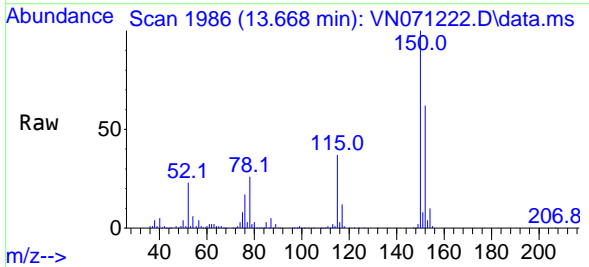
Instrument :  
 MSVOA\_N  
 ClientSampleId :



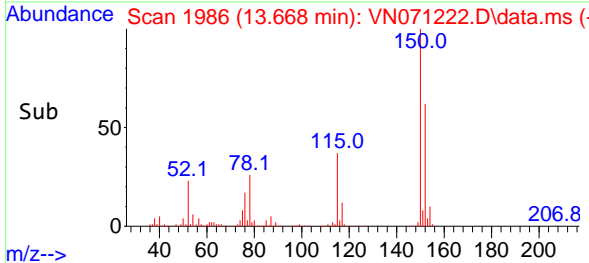
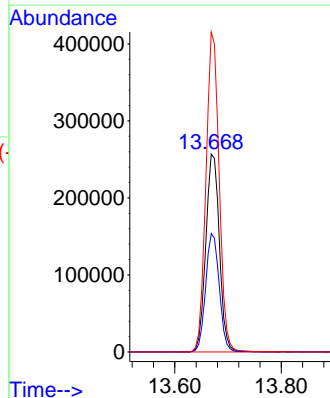
Tgt Ion:173 Resp: 3606  
 Ion Ratio Lower Upper  
 173 100  
 175 762.7 24.2 72.6#  
 254 0.0 0.0 0.0



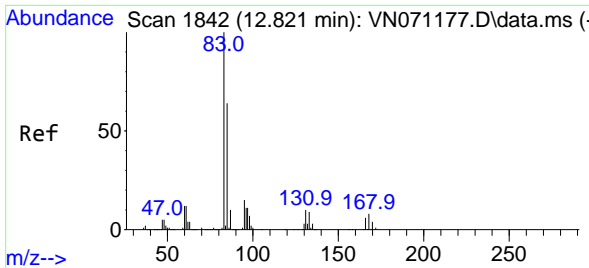
#72  
 1,4-Dichlorobenzene-d4  
 Concen: 50.000 ug/l  
 RT: 13.668 min Scan# 1986  
 Delta R.T. 0.000 min  
 Lab File: VN071222.D  
 Acq: 10 Mar 2022 09:22



Tgt Ion:152 Resp: 456932  
 Ion Ratio Lower Upper  
 152 100  
 115 59.9 27.5 82.5  
 150 156.9 0.0 344.4



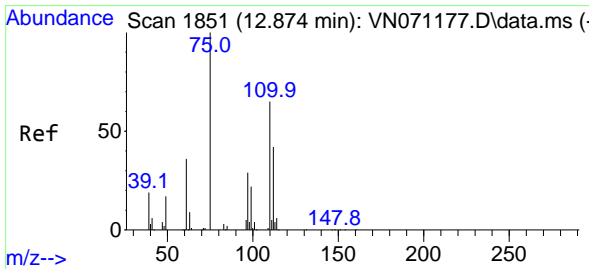
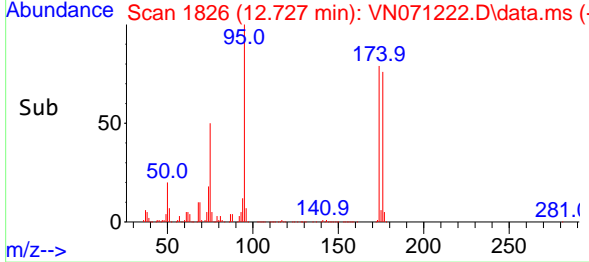
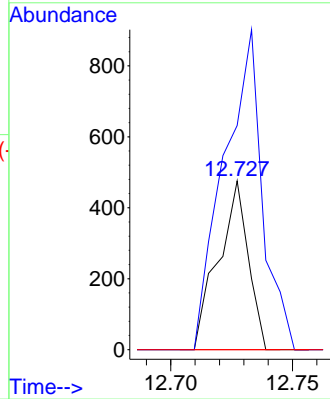
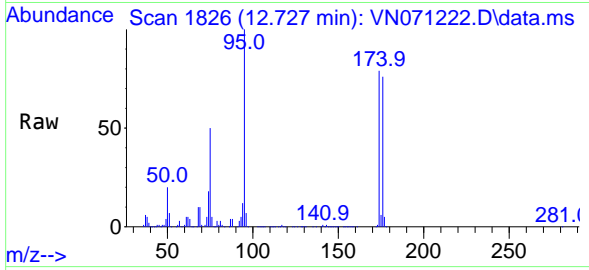




#75  
 1,1,2,2-Tetrachloroethane  
 Concen: Below Cal  
 RT: 12.727 min Scan# 1826  
 Delta R.T. -0.094 min  
 Lab File: VN071222.D  
 Acq: 10 Mar 2022 09:22

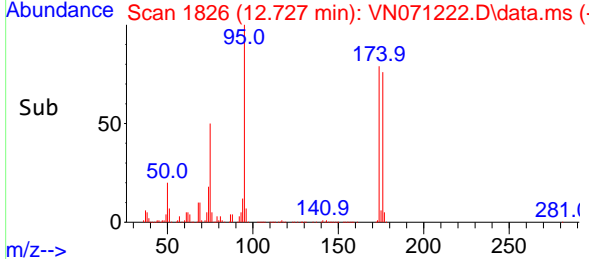
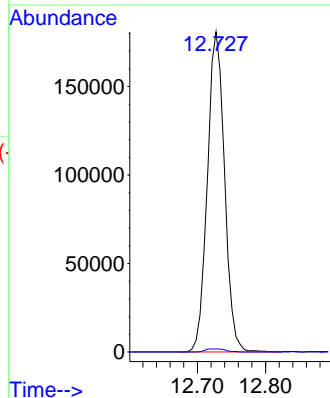
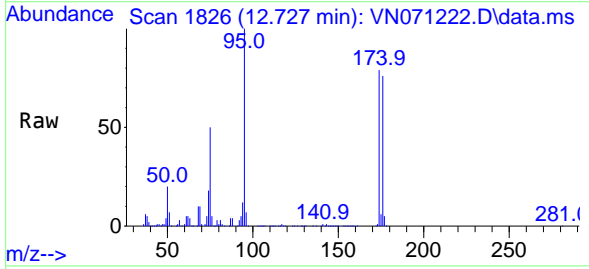
Instrument : MSVOA\_N  
 ClientSampleId :

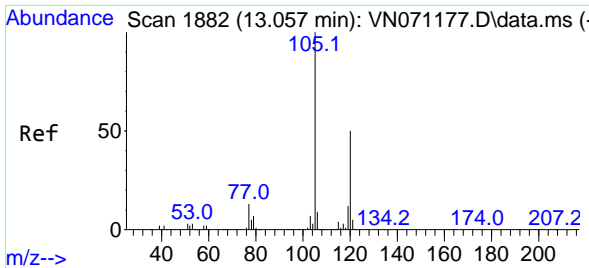
Tgt Ion: 83 Resp: 407  
 Ion Ratio Lower Upper  
 83 100  
 131 242.8 5.5 16.5#  
 85 0.0 32.4 97.2#



#76  
 1,2,3-Trichloropropane  
 Concen: 27.365 ug/l  
 RT: 12.727 min Scan# 1826  
 Delta R.T. -0.147 min  
 Lab File: VN071222.D  
 Acq: 10 Mar 2022 09:22

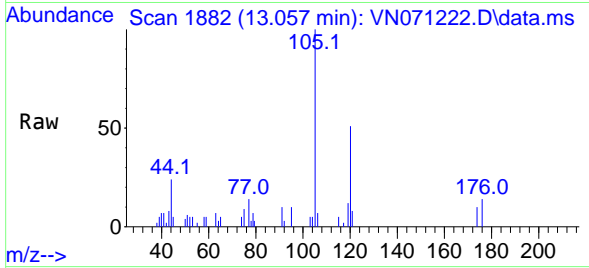
Tgt Ion: 75 Resp: 317204  
 Ion Ratio Lower Upper  
 75 100  
 77 1.1 82.6 247.8#



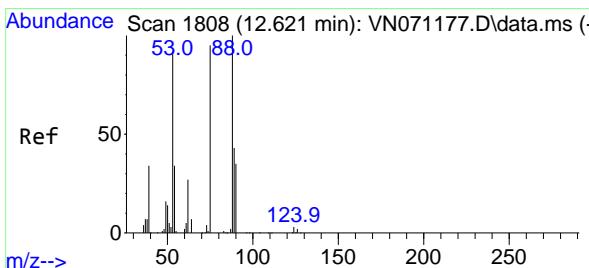
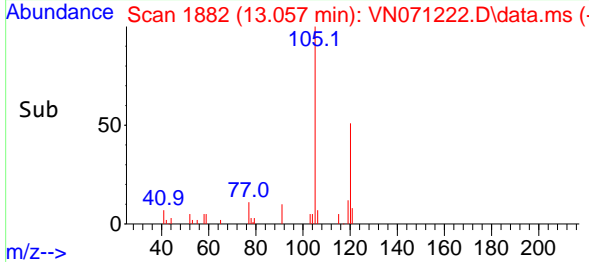
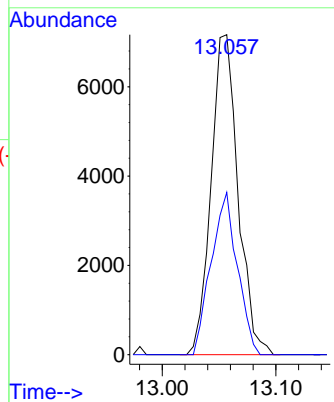


#80  
 1,3,5-Trimethylbenzene  
 Concen: 0.345 ug/l  
 RT: 13.057 min Scan# 1882  
 Delta R.T. -0.000 min  
 Lab File: VN071222.D  
 Acq: 10 Mar 2022 09:22

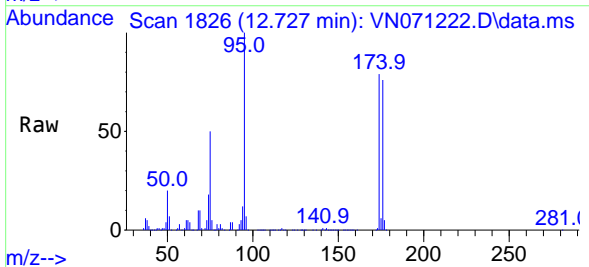
Instrument : MSVOA\_N  
 ClientSampleId :



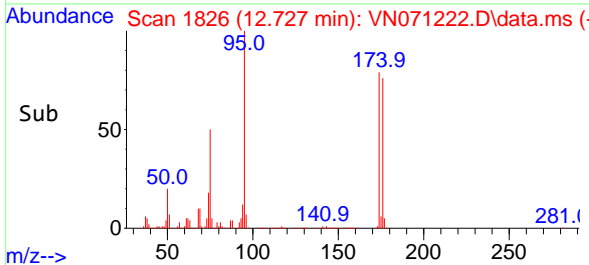
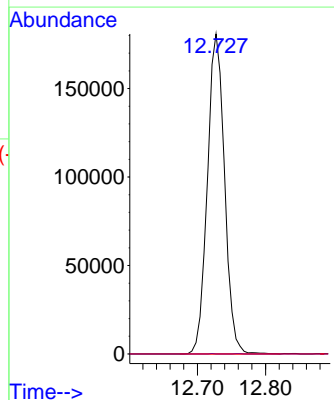
Tgt Ion:105 Resp: 11818  
 Ion Ratio Lower Upper  
 105 100  
 120 49.3 24.6 73.6

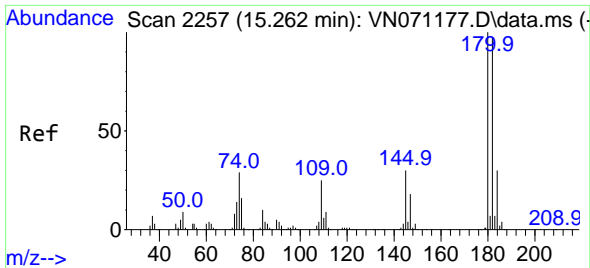


#81  
 trans-1,4-Dichloro-2-butene  
 Concen: 75.043 ug/l  
 RT: 12.727 min Scan# 1826  
 Delta R.T. 0.106 min  
 Lab File: VN071222.D  
 Acq: 10 Mar 2022 09:22



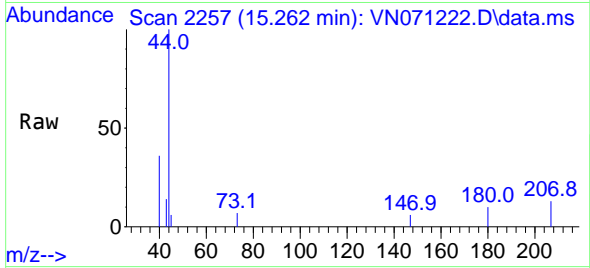
Tgt Ion: 75 Resp: 317204  
 Ion Ratio Lower Upper  
 75 100  
 53 0.0 90.5 135.7#  
 89 0.0 38.2 57.4#



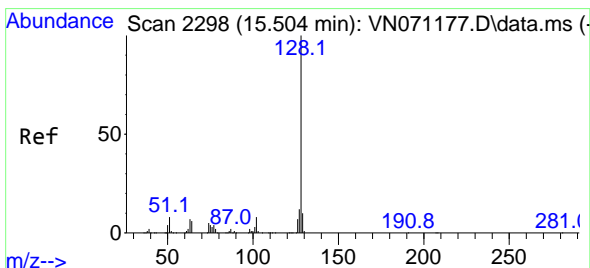
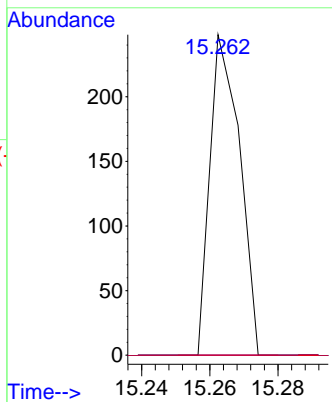
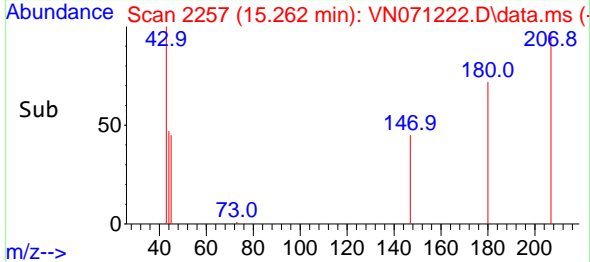


#93  
 1,2,4-Trichlorobenzene  
 Concen: 3.008 ug/l  
 RT: 15.262 min Scan# 21  
 Delta R.T. 0.000 min  
 Lab File: VN071222.D  
 Acq: 10 Mar 2022 09:22

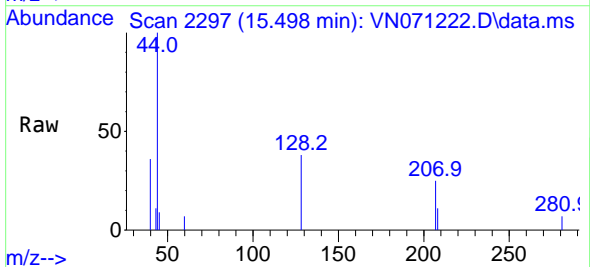
Instrument :  
 MSVOA\_N  
 ClientSampleId :



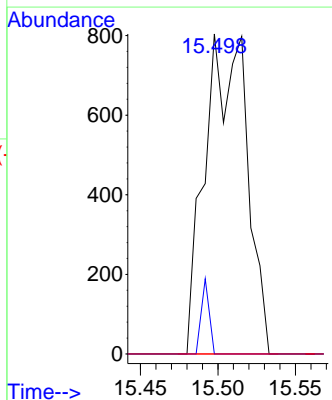
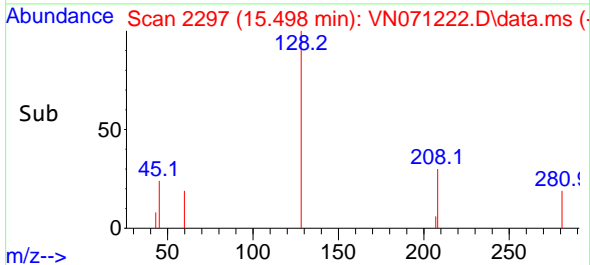
Tgt Ion:180 Resp: 150  
 Ion Ratio Lower Upper  
 180 100  
 182 0.0 48.3 144.9#  
 145 0.0 14.5 43.5#

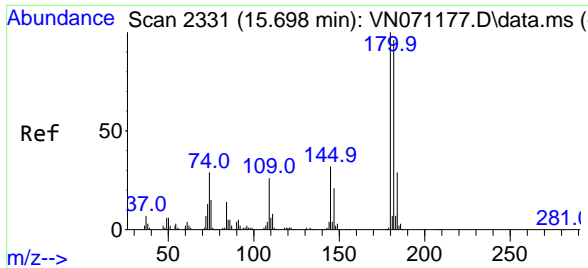


#95  
 Naphthalene  
 Concen: 5.132 ug/l  
 RT: 15.498 min Scan# 2297  
 Delta R.T. -0.006 min  
 Lab File: VN071222.D  
 Acq: 10 Mar 2022 09:22



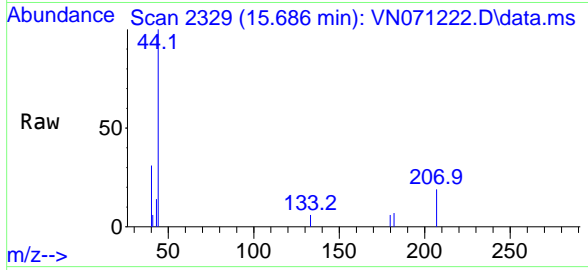
Tgt Ion:128 Resp: 1507  
 Ion Ratio Lower Upper  
 128 100  
 127 4.4 10.5 15.7#  
 129 0.0 8.7 13.1#





#96  
 1,2,3-Trichlorobenzene  
 Concen: 2.739 ug/l  
 RT: 15.686 min Scan# 21  
 Delta R.T. -0.012 min  
 Lab File: VN071222.D  
 Acq: 10 Mar 2022 09:22

Instrument :  
 MSVOA\_N  
 ClientSampleId :



Tgt Ion:180 Resp: 56

| Ion | Ratio | Lower | Upper |
|-----|-------|-------|-------|
| 180 | 100   |       |       |
| 182 | 119.6 | 47.4  | 142.2 |
| 145 | 0.0   | 15.0  | 45.1# |

