

Data Path : Z:\voasrv\HPCHEM1\MSVOA_N\Data\VN030923\
 Data File : VN076896.D
 Acq On : 09 Mar 2023 12:27
 Operator : JC\MD
 Sample : 01852-03
 Misc : 5.0mL/MSVOA_N/WATER
 ALS Vial : 7 Sample Multiplier: 1

Instrument :
 MSVOA_N
 ClientSampleId :
 TT-051-IDWGW-20230308

Quant Time: Mar 10 01:30:51 2023
 Quant Method : Z:\voasrv\HPCHEM1\MSVOA_N\methods\624N030823W.M
 Quant Title : METHOD 624 VOLATILE ORGANIC ANALYSIS
 QLast Update : Thu Mar 09 04:16:54 2023
 Response via : Initial Calibration

Compound	R.T.	QIon	Response	Conc	Units	Dev(Min)

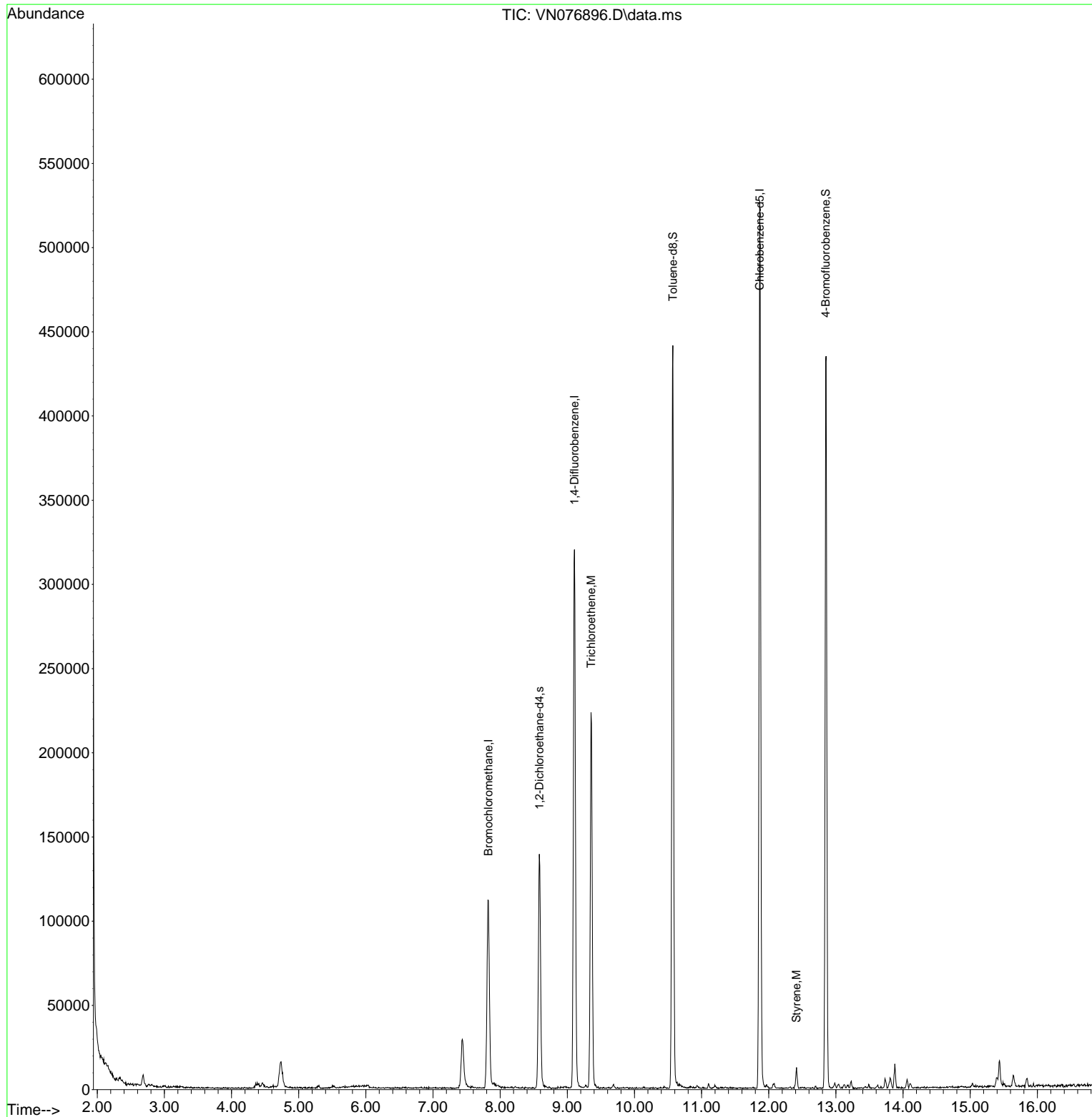
Internal Standards						
1) Bromochloromethane	7.825	128	40551	30.000	ug/l	0.00
28) 1,4-Difluorobenzene	9.107	114	277884	30.000	ug/l	0.00
57) Chlorobenzene-d5	11.866	117	309642	30.000	ug/l	0.00
System Monitoring Compounds						
27) 1,2-Dichloroethane-d4	8.583	65	115952	31.109	ug/l	0.00
Spiked Amount	30.000	Range 91 - 110	Recovery	=	103.700%	
60) 4-Bromofluorobenzene	12.848	95	160529	27.392	ug/l	0.00
Spiked Amount	30.000	Range 63 - 112	Recovery	=	91.300%	
63) Toluene-d8	10.572	98	313043	28.744	ug/l	0.00
Spiked Amount	30.000	Range 91 - 112	Recovery	=	95.800%	
Target Compounds						
37) Trichloroethene	9.354	130	80338	16.244	ug/l	96
69) Styrene	12.413	104	5603	0.403	ug/l	95

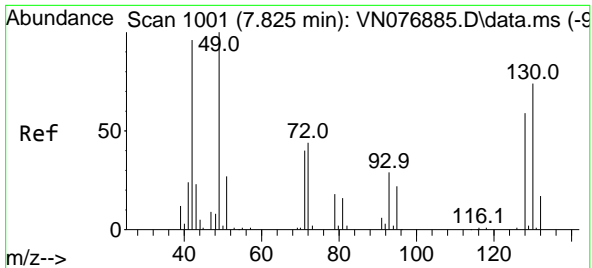
(#) = qualifier out of range (m) = manual integration (+) = signals summed

Data Path : Z:\voasrv\HPCHEM1\MSVOA_N\Data\VN030923\
 Data File : VN076896.D
 Acq On : 09 Mar 2023 12:27
 Operator : JC\MD
 Sample : 01852-03
 Misc : 5.0mL/MSVOA_N/WATER
 ALS Vial : 7 Sample Multiplier: 1

Instrument :
 MSVOA_N
 ClientSampleId :
 TT-051-IDWGW-20230308

Quant Time: Mar 10 01:30:51 2023
 Quant Method : Z:\voasrv\HPCHEM1\MSVOA_N\methods\624N030823W.M
 Quant Title : METHOD 624 VOLATILE ORGANIC ANALYSIS
 QLast Update : Thu Mar 09 04:16:54 2023
 Response via : Initial Calibration

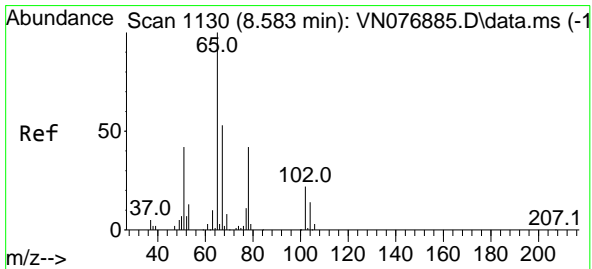
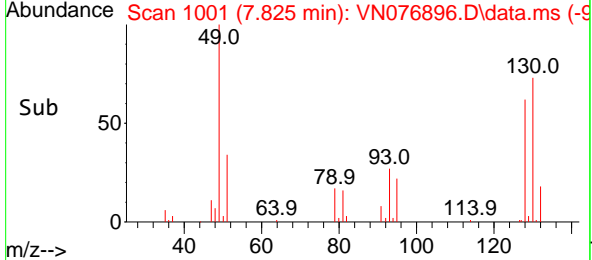
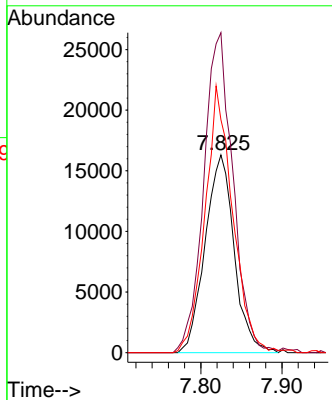
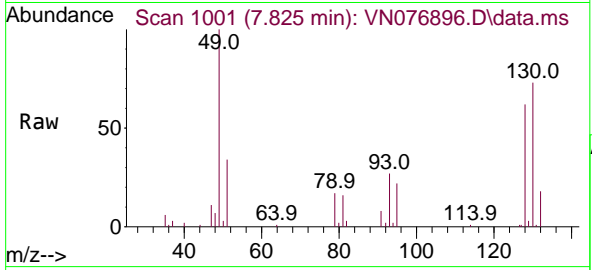




#1
 Bromochloromethane
 Concen: 30.000 ug/l
 RT: 7.825 min Scan# 1001
 Delta R.T. -0.000 min
 Lab File: VN076896.D
 Acq: 09 Mar 2023 12:27

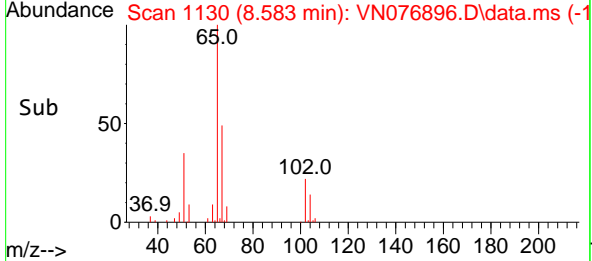
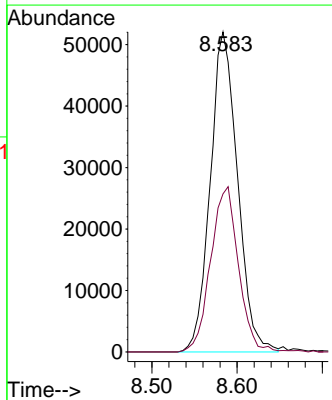
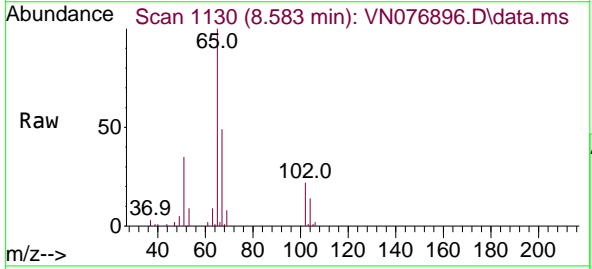
Instrument : MSVOA_N
 ClientSampleId : TT-051-IDWGW-20230308

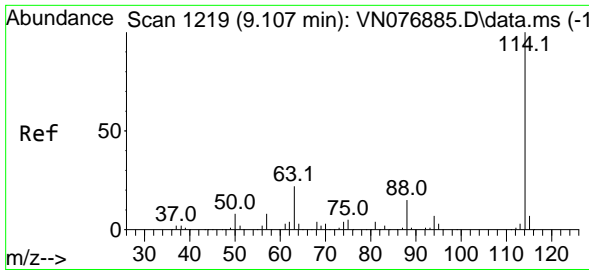
Tgt Ion	Resp	Lower	Upper
128	100		
49	161.9	0.0	461.8
130	128.3	0.0	295.3



#27
 1,2-Dichloroethane-d4
 Concen: 31.109 ug/l
 RT: 8.583 min Scan# 1130
 Delta R.T. 0.000 min
 Lab File: VN076896.D
 Acq: 09 Mar 2023 12:27

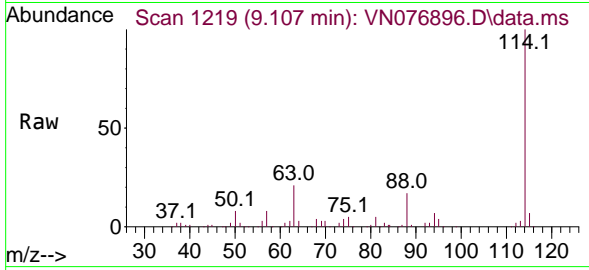
Tgt Ion	Resp	Lower	Upper
65	100		
67	52.0	40.9	61.3



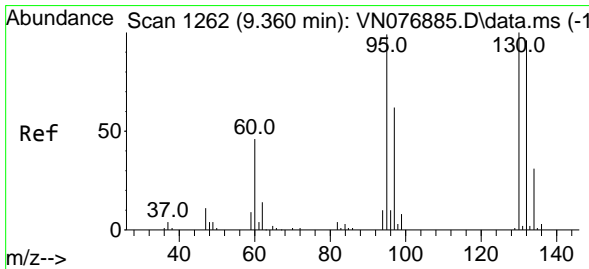
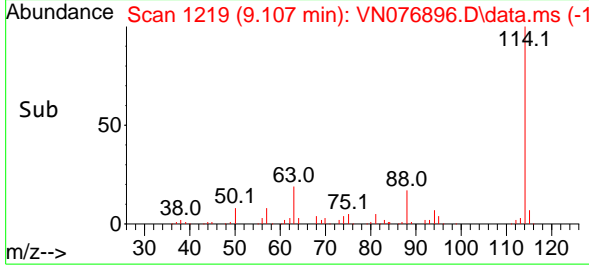
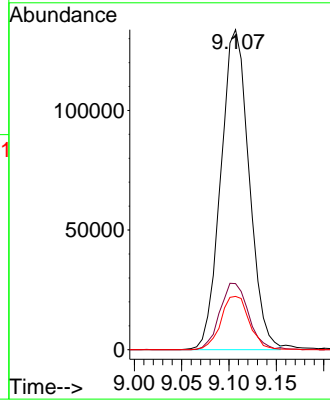


#28
 1,4-Difluorobenzene
 Concen: 30.000 ug/l
 RT: 9.107 min Scan# 11
 Delta R.T. 0.000 min
 Lab File: VN076896.D
 Acq: 09 Mar 2023 12:27

Instrument : MSVOA_N
 ClientSampleId : TT-051-IDWGW-20230308

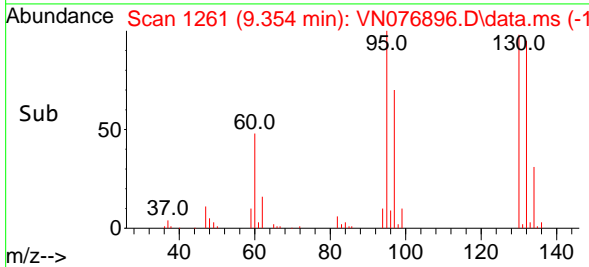
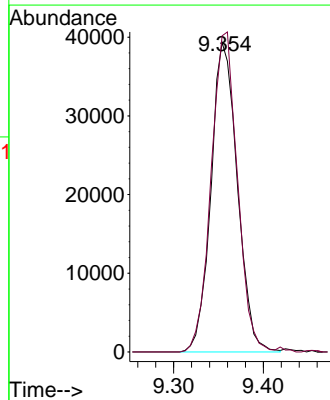
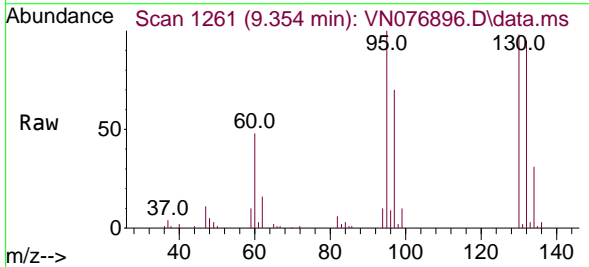


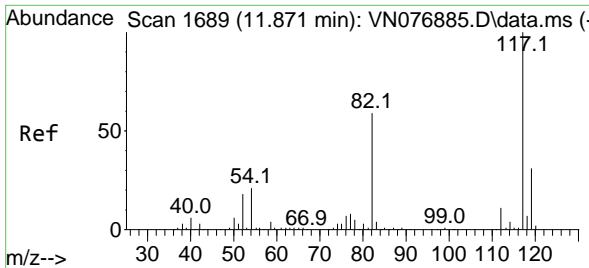
Tgt Ion:114 Resp: 277884
 Ion Ratio Lower Upper
 114 100
 63 20.9 17.0 25.4
 88 16.7 11.6 17.4



#37
 Trichloroethene
 Concen: 16.244 ug/l
 RT: 9.354 min Scan# 1261
 Delta R.T. 0.000 min
 Lab File: VN076896.D
 Acq: 09 Mar 2023 12:27

Tgt Ion:130 Resp: 80338
 Ion Ratio Lower Upper
 130 100
 95 102.2 78.7 118.1



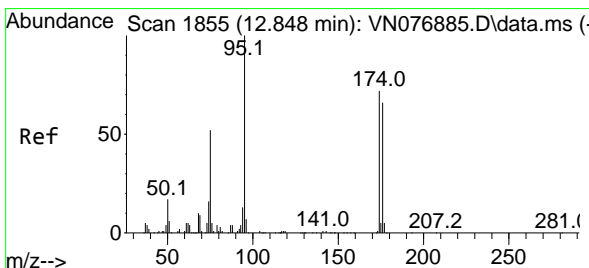
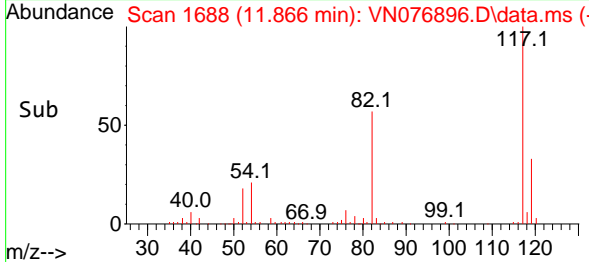
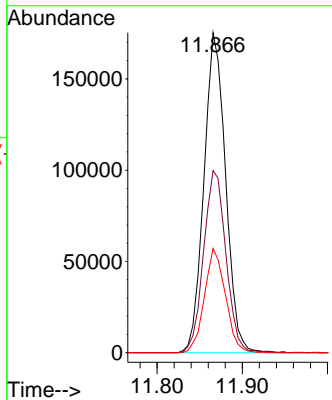
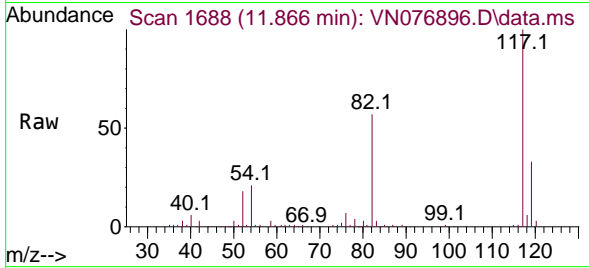


#57
 Chlorobenzene-d5
 Concen: 30.000 ug/l
 RT: 11.866 min Scan# 117
 Delta R.T. 0.000 min
 Lab File: VN076896.D
 Acq: 09 Mar 2023 12:27

Instrument : MSVOA_N
 ClientSampleId : TT-051-IDWGW-20230308

Tgt Ion:117 Resp: 309642

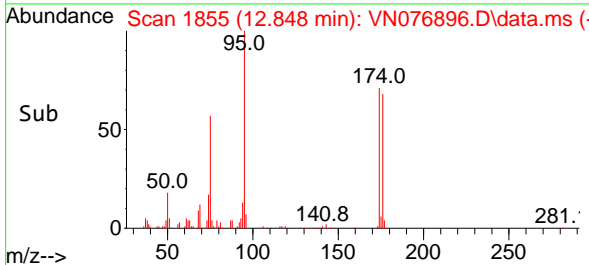
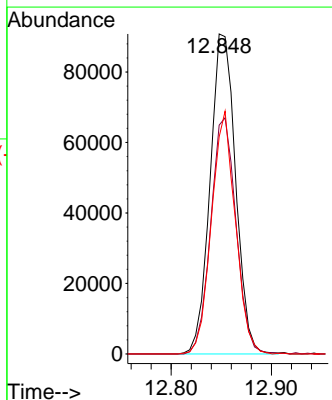
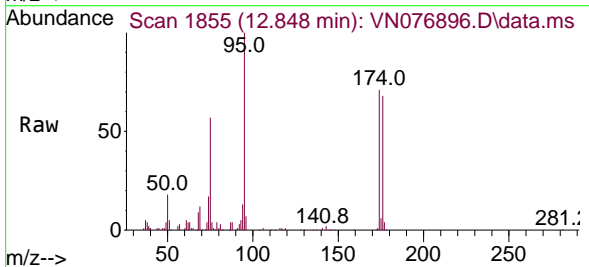
Ion	Ratio	Lower	Upper
117	100		
82	58.7	45.4	68.0
119	31.6	26.8	40.2

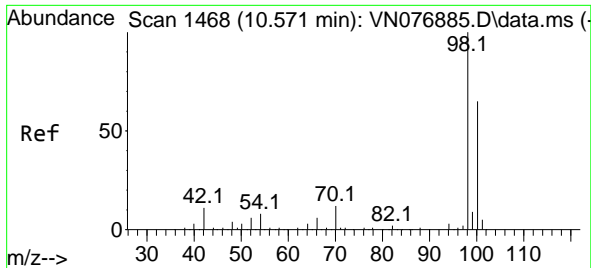


#60
 4-Bromofluorobenzene
 Concen: 27.392 ug/l
 RT: 12.848 min Scan# 1855
 Delta R.T. -0.000 min
 Lab File: VN076896.D
 Acq: 09 Mar 2023 12:27

Tgt Ion: 95 Resp: 160529

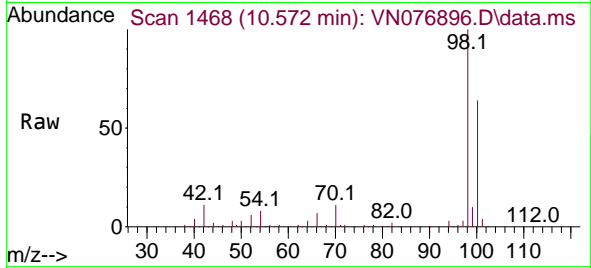
Ion	Ratio	Lower	Upper
95	100		
174	73.3	64.2	96.4
176	71.1	61.4	92.0



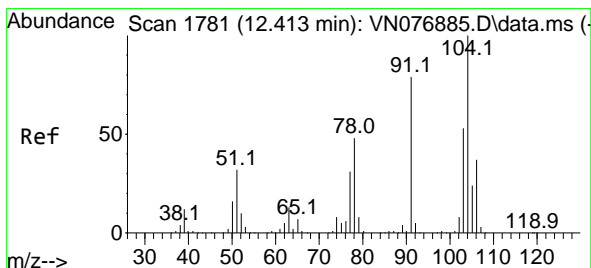
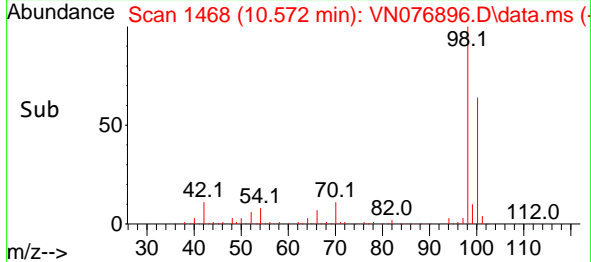
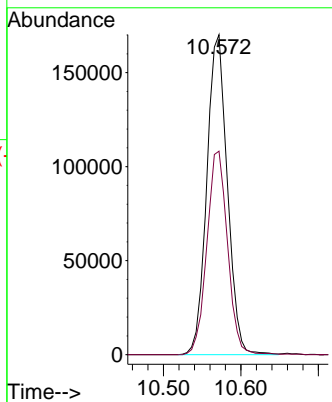


#63
 Toluene-d8
 Concen: 28.744 ug/l
 RT: 10.572 min Scan# 1468
 Delta R.T. -0.000 min
 Lab File: VN076896.D
 Acq: 09 Mar 2023 12:27

Instrument : MSVOA_N
 ClientSampleId : TT-051-IDWGW-20230308



Tgt Ion: 98 Resp: 313043
 Ion Ratio Lower Upper
 98 100
 100 64.1 53.8 80.6



#69
 Styrene
 Concen: 0.403 ug/l
 RT: 12.413 min Scan# 1781
 Delta R.T. -0.000 min
 Lab File: VN076896.D
 Acq: 09 Mar 2023 12:27

Tgt Ion: 104 Resp: 5603
 Ion Ratio Lower Upper
 104 100
 78 42.9 39.6 59.4
 103 54.3 43.9 65.9

