

Data Path : Z:\voasrv\HPCHEM1\MSVOA_N\Data\VN031023\
 Data File : VN076938.D
 Acq On : 10 Mar 2023 20:50
 Operator : JC\MD
 Sample : PB151341TB
 Misc : 5.0mL/MSVOA_N/WATER
 ALS Vial : 27 Sample Multiplier: 1

Instrument :
 MSVOA_N
 ClientSampleId :
 PB151341TB

Quant Time: Mar 13 01:24:37 2023
 Quant Method : Z:\voasrv\HPCHEM1\MSVOA_N\methods\82N031023W.M
 Quant Title : SW846 8260
 QLast Update : Fri Mar 10 13:47:39 2023
 Response via : Initial Calibration

Compound	R.T.	QIon	Response	Conc	Units	Dev(Min)

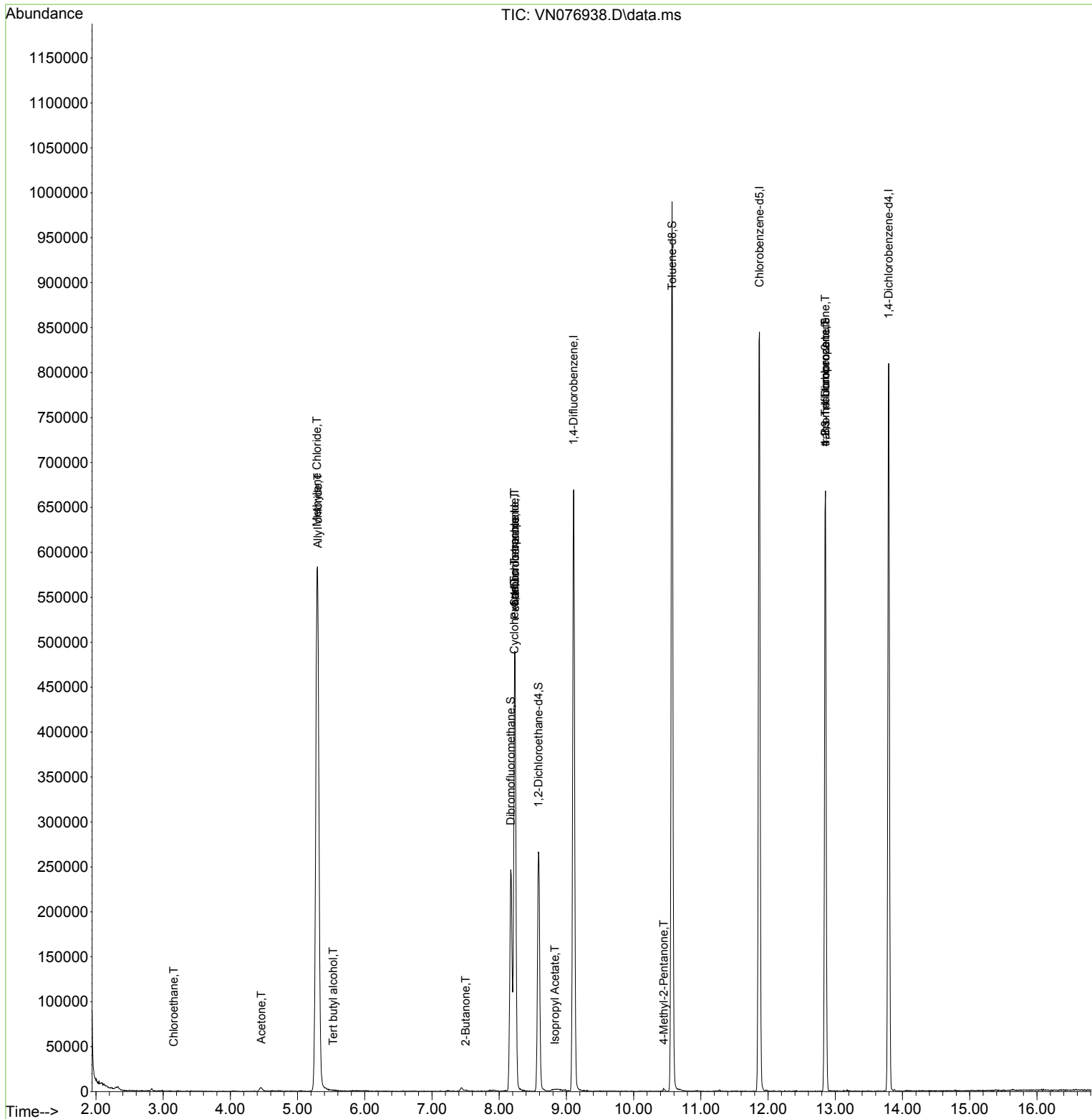
Internal Standards						
1) Pentafluorobenzene	8.236	168	343917	50.000	ug/l	0.00
34) 1,4-Difluorobenzene	9.107	114	562249	50.000	ug/l	0.00
63) Chlorobenzene-d5	11.872	117	487623	50.000	ug/l	0.00
72) 1,4-Dichlorobenzene-d4	13.795	152	208279	50.000	ug/l	0.00
System Monitoring Compounds						
33) 1,2-Dichloroethane-d4	8.584	65	242718	47.293	ug/l	0.00
Spiked Amount	50.000	Range 74 - 125	Recovery =	94.580%		
35) Dibromofluoromethane	8.172	113	178492	47.633	ug/l	0.00
Spiked Amount	50.000	Range 75 - 124	Recovery =	95.260%		
50) Toluene-d8	10.572	98	669280	48.463	ug/l	0.00
Spiked Amount	50.000	Range 86 - 113	Recovery =	96.920%		
62) 4-Bromofluorobenzene	12.854	95	239576	47.428	ug/l	0.00
Spiked Amount	50.000	Range 83 - 123	Recovery =	94.860%		
Target Compounds						
					Qvalue	
6) Chloroethane	3.160	64	431	0.218	ug/l #	42
11) Tert butyl alcohol	5.531	59	235	0.329	ug/l #	72
14) Allyl chloride	5.301	41	12592	2.309	ug/l #	14
16) Acetone	4.460	43	8169	4.593	ug/l #	78
20) Methylene Chloride	5.290	84	499969	109.338	ug/l	89
25) 2-Butanone	7.501	43	969	0.383	ug/l	96
31) Cyclohexane	8.225	56	7805	1.060	ug/l #	44
36) 1,1-Dichloropropene	8.231	75	29687	5.122	ug/l #	50
38) Carbon Tetrachloride	8.231	117	39336	5.799	ug/l #	16
43) Isopropyl Acetate	8.831	43	3430	0.419	ug/l #	48
51) 4-Methyl-2-Pentanone	10.448	43	1935	0.394	ug/l	90
76) 1,2,3-Trichloropropane	12.854	75	132836	26.306	ug/l #	1
81) trans-1,4-Dichloro-2-b...	12.854	75	132836	85.929	ug/l #	15

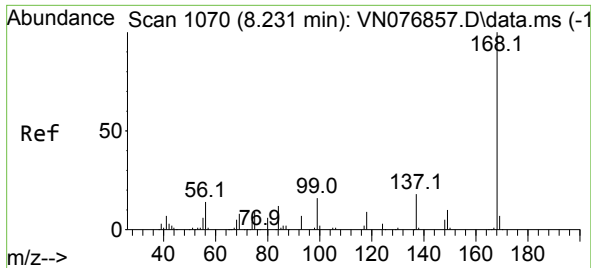
(#) = qualifier out of range (m) = manual integration (+) = signals summed

Data Path : Z:\voasrv\HPCHEM1\MSVOA_N\Data\VN031023\
 Data File : VN076938.D
 Acq On : 10 Mar 2023 20:50
 Operator : JC\MD
 Sample : PB151341TB
 Misc : 5.0mL/MSVOA_N/WATER
 ALS Vial : 27 Sample Multiplier: 1

Instrument :
 MSVOA_N
 ClientSampleId :
 PB151341TB

Quant Time: Mar 13 01:24:37 2023
 Quant Method : Z:\voasrv\HPCHEM1\MSVOA_N\methods\82N031023W.M
 Quant Title : SW846 8260
 QLast Update : Fri Mar 10 13:47:39 2023
 Response via : Initial Calibration

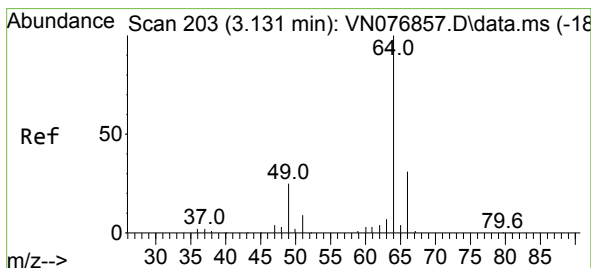
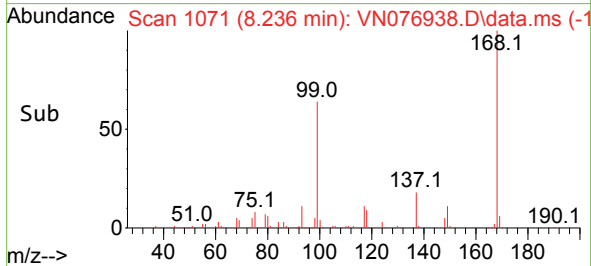
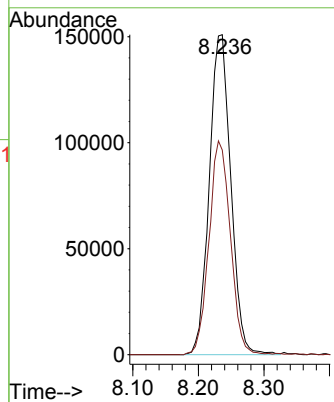
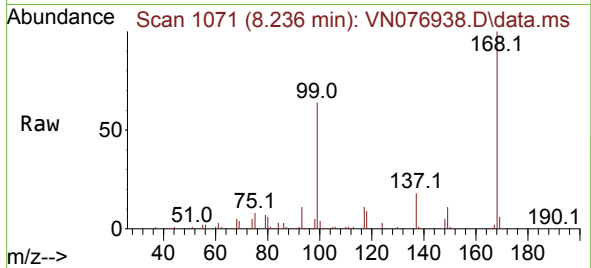




#1
 Pentafluorobenzene
 Concen: 50.000 ug/l
 RT: 8.236 min Scan# 10
 Delta R.T. 0.005 min
 Lab File: VN076938.D
 Acq: 10 Mar 2023 20:50

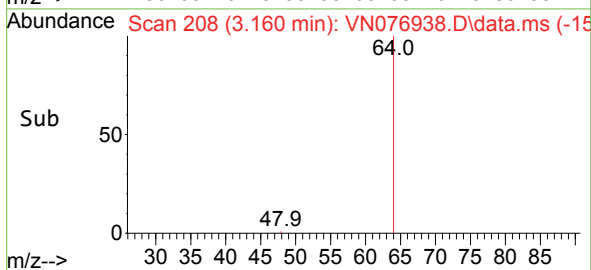
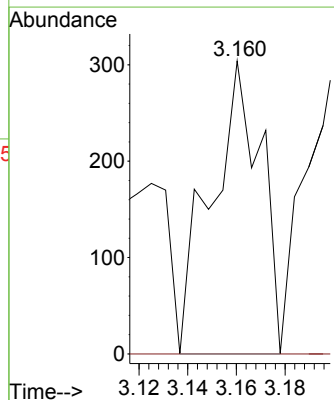
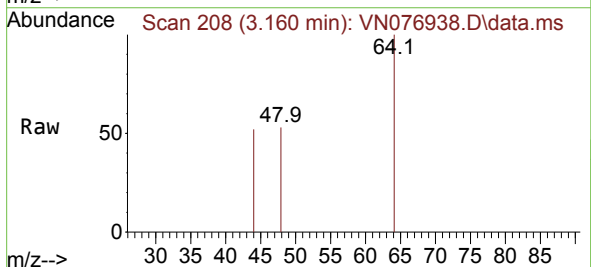
Instrument :
 MSVOA_N
 ClientSampleId :
 PB151341TB

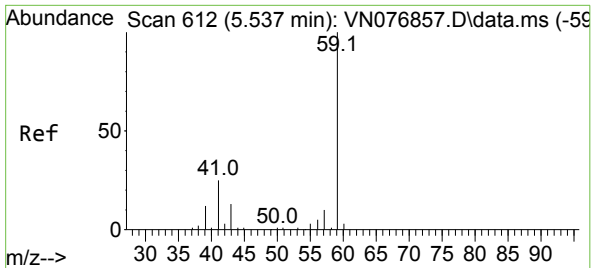
Tgt Ion:168 Resp: 343917
 Ion Ratio Lower Upper
 168 100
 99 63.9 48.6 73.0



#6
 Chloroethane
 Concen: 0.218 ug/l
 RT: 3.160 min Scan# 208
 Delta R.T. 0.029 min
 Lab File: VN076938.D
 Acq: 10 Mar 2023 20:50

Tgt Ion: 64 Resp: 431
 Ion Ratio Lower Upper
 64 100
 66 0.0 26.2 39.4#

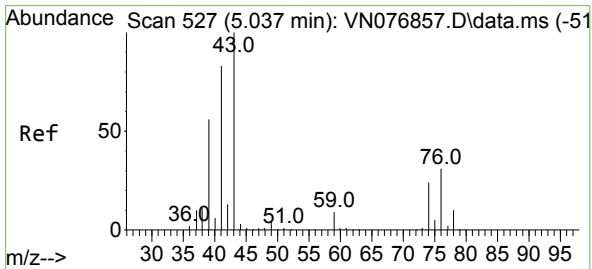
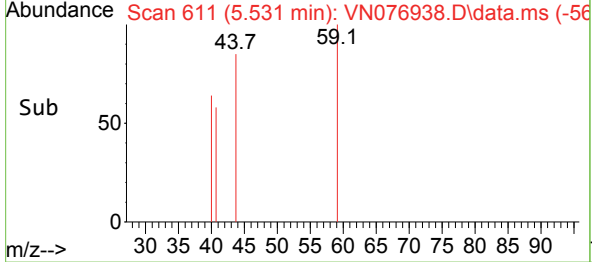
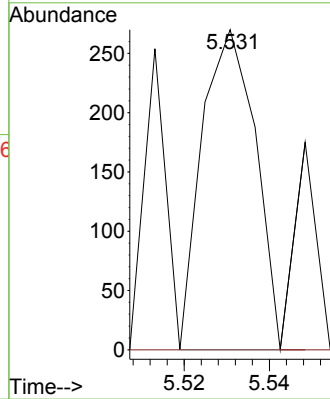
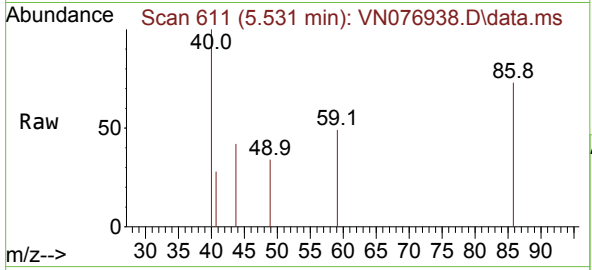




#11
 Tert butyl alcohol
 Concen: 0.329 ug/l
 RT: 5.531 min Scan# 611
 Delta R.T. -0.000 min
 Lab File: VN076938.D
 Acq: 10 Mar 2023 20:50

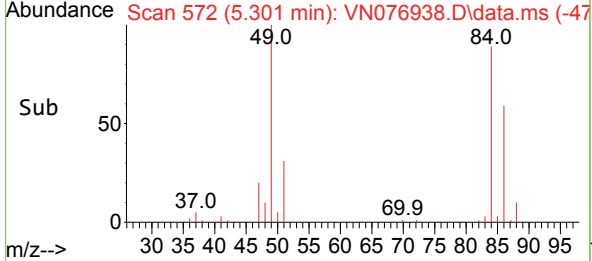
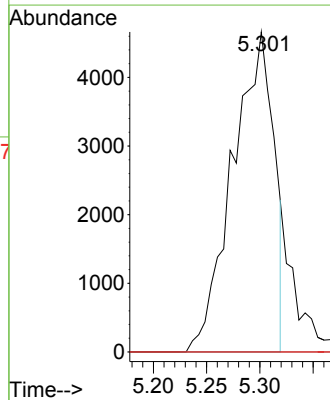
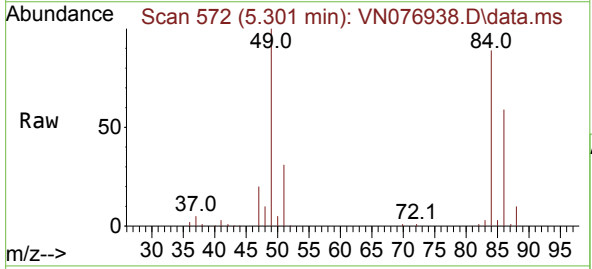
Instrument : MSVOA_N
 ClientSampleId : PB151341TB

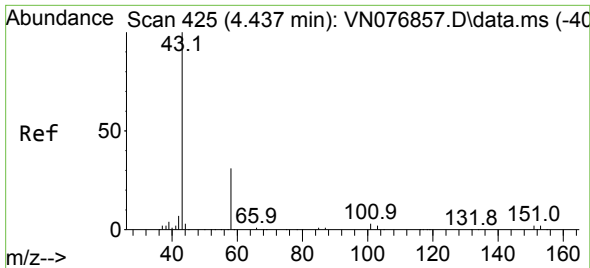
Tgt Ion: 59 Resp: 235
 Ion Ratio Lower Upper
 59 100
 57 0.0 8.6 12.8#



#14
 Allyl chloride
 Concen: 2.309 ug/l
 RT: 5.301 min Scan# 572
 Delta R.T. 0.265 min
 Lab File: VN076938.D
 Acq: 10 Mar 2023 20:50

Tgt Ion: 41 Resp: 12592
 Ion Ratio Lower Upper
 41 100
 39 0.0 68.1 102.1#
 76 0.0 44.1 66.1#

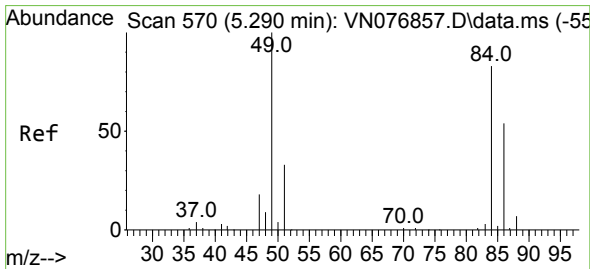
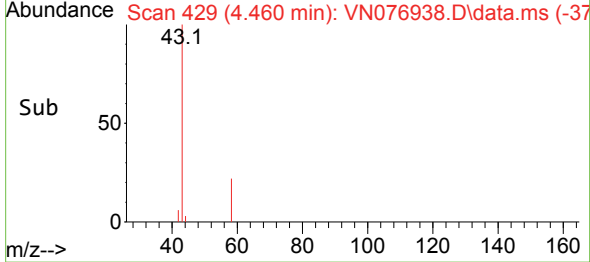
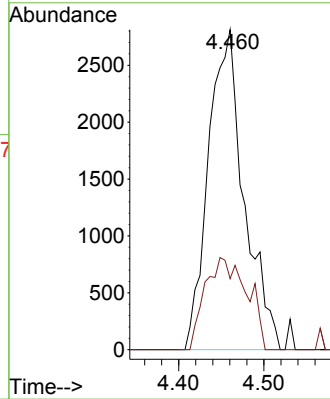
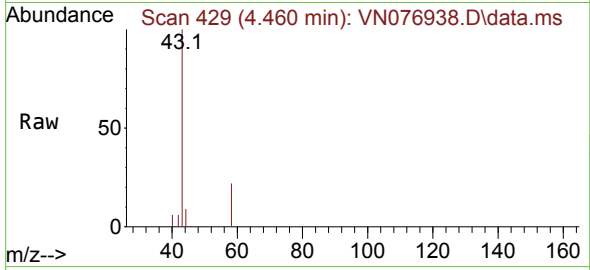




#16
 Acetone
 Concen: 4.593 ug/l
 RT: 4.460 min Scan# 41
 Delta R.T. 0.023 min
 Lab File: VN076938.D
 Acq: 10 Mar 2023 20:50

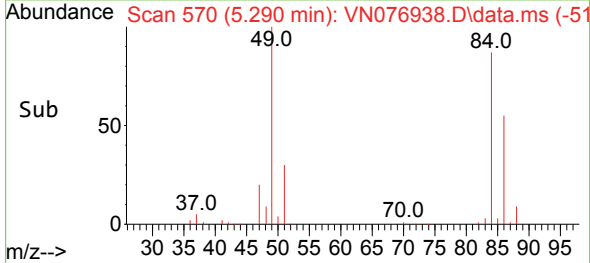
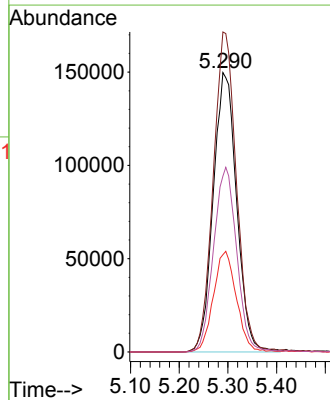
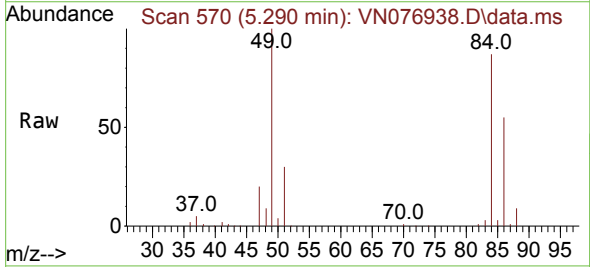
Instrument : MSVOA_N
 ClientSampleId : PB151341TB

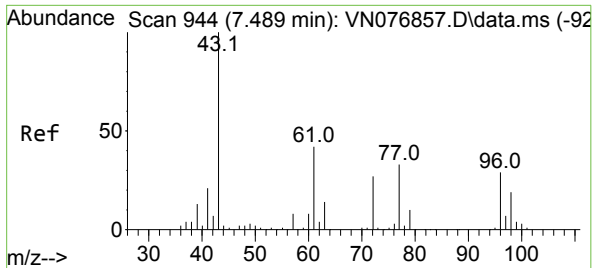
Tgt Ion: 43 Resp: 8169
 Ion Ratio Lower Upper
 43 100
 58 22.2 28.2 42.2#



#20
 Methylene Chloride
 Concen: 109.338 ug/l
 RT: 5.290 min Scan# 570
 Delta R.T. -0.000 min
 Lab File: VN076938.D
 Acq: 10 Mar 2023 20:50

Tgt Ion: 84 Resp: 499969
 Ion Ratio Lower Upper
 84 100
 49 114.5 76.6 114.8
 51 34.8 25.4 38.2
 86 62.9 51.1 76.7



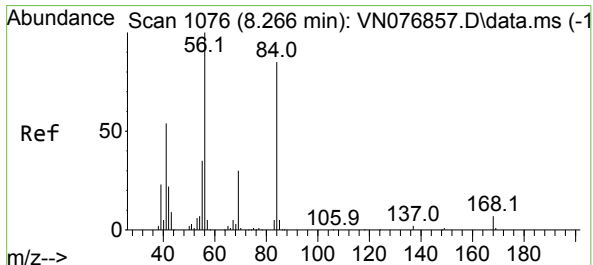
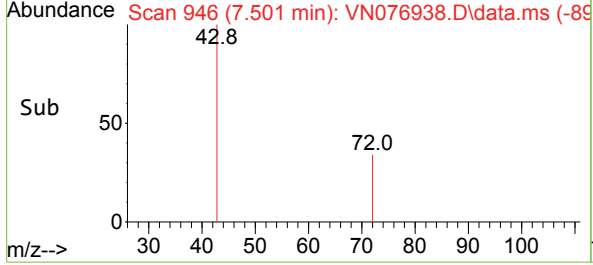
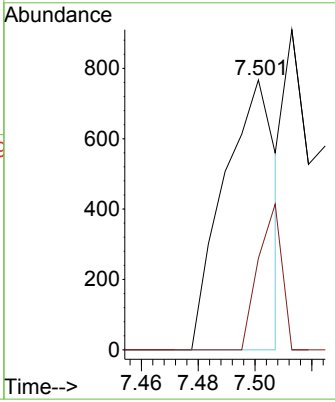
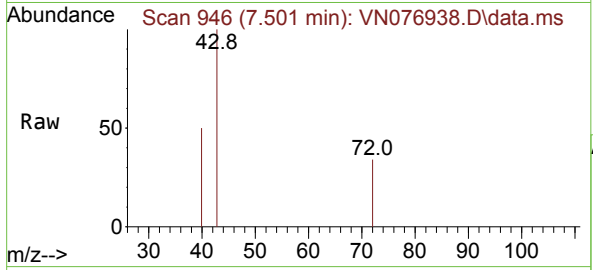


#25
 2-Butanone
 Concen: 0.383 ug/l
 RT: 7.501 min Scan# 944
 Delta R.T. 0.012 min
 Lab File: VN076938.D
 Acq: 10 Mar 2023 20:50

Instrument : MSVOA_N
 ClientSampleId : PB151341TB

Tgt Ion: 43 Resp: 969

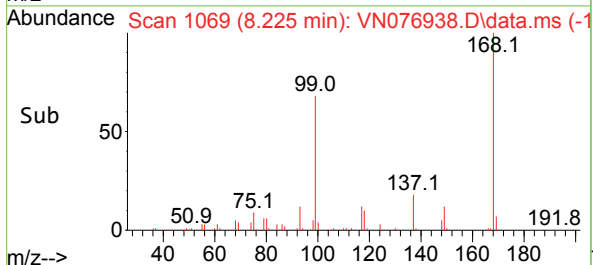
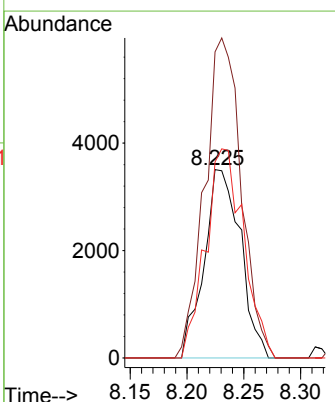
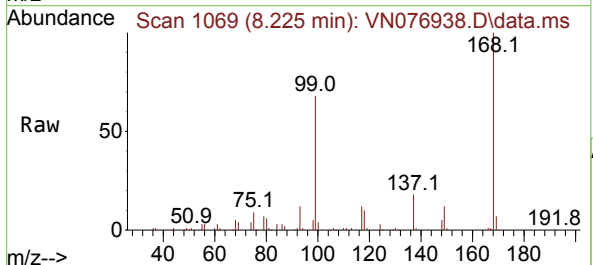
Ion	Ratio	Lower	Upper
43	100		
72	33.9	28.8	43.2

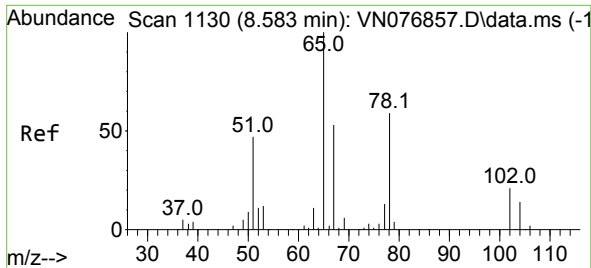


#31
 Cyclohexane
 Concen: 1.060 ug/l
 RT: 8.225 min Scan# 1069
 Delta R.T. -0.041 min
 Lab File: VN076938.D
 Acq: 10 Mar 2023 20:50

Tgt Ion: 56 Resp: 7805

Ion	Ratio	Lower	Upper
56	100		
69	162.6	27.0	40.6#
84	104.1	82.9	124.3

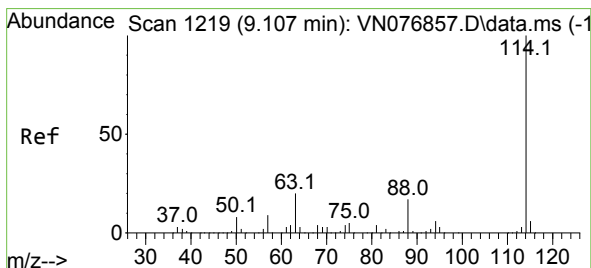
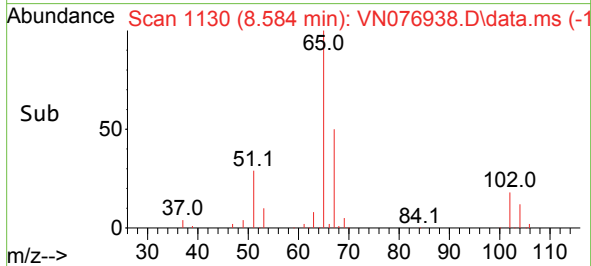
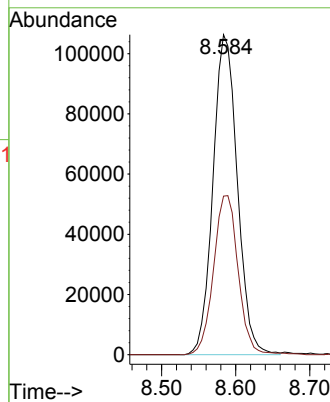
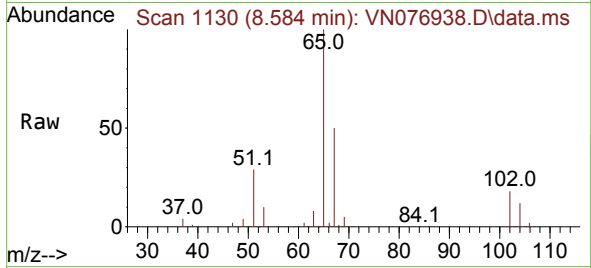




#33
 1,2-Dichloroethane-d4
 Concen: 47.293 ug/l
 RT: 8.584 min Scan# 1130
 Delta R.T. -0.000 min
 Lab File: VN076938.D
 Acq: 10 Mar 2023 20:50

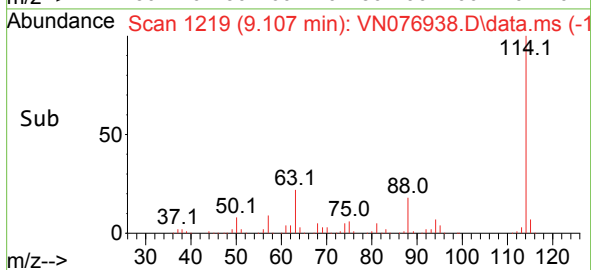
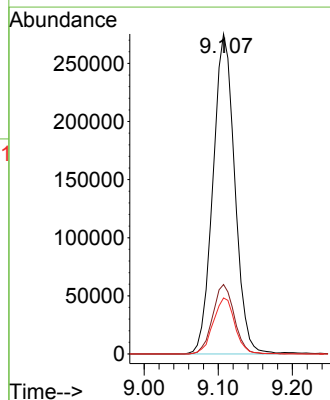
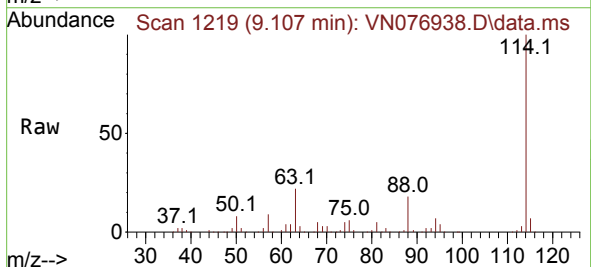
Instrument : MSVOA_N
 ClientSampleId : PB151341TB

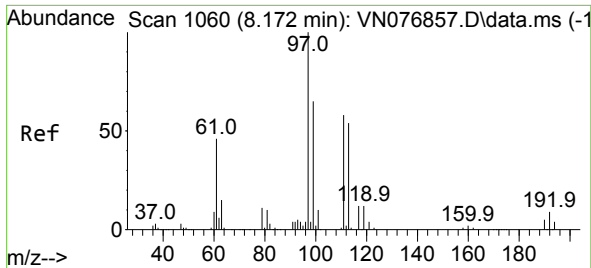
Tgt Ion: 65 Resp: 242718
 Ion Ratio Lower Upper
 65 100
 67 50.3 0.0 107.2



#34
 1,4-Difluorobenzene
 Concen: 50.000 ug/l
 RT: 9.107 min Scan# 1219
 Delta R.T. -0.000 min
 Lab File: VN076938.D
 Acq: 10 Mar 2023 20:50

Tgt Ion: 114 Resp: 562249
 Ion Ratio Lower Upper
 114 100
 63 21.7 0.0 36.6
 88 17.5 0.0 28.6

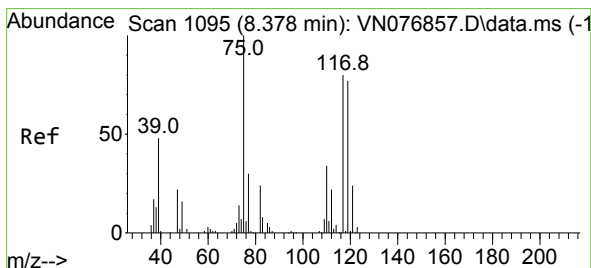
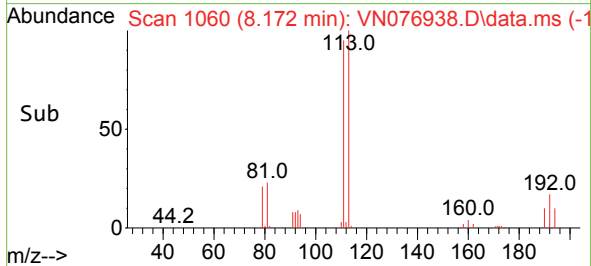
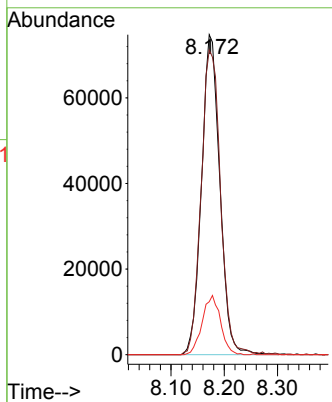
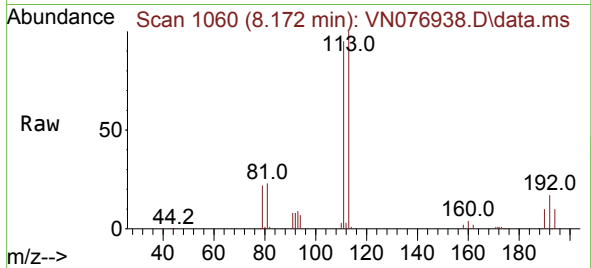




#35
 Dibromofluoromethane
 Concen: 47.633 ug/l
 RT: 8.172 min Scan# 1060
 Delta R.T. -0.000 min
 Lab File: VN076938.D
 Acq: 10 Mar 2023 20:50

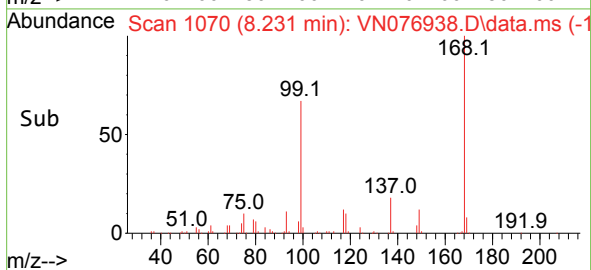
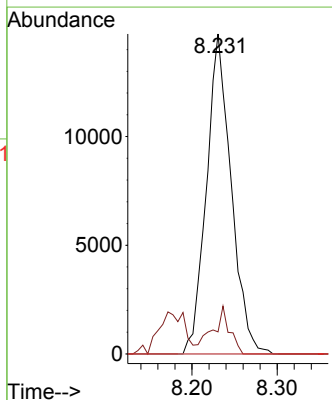
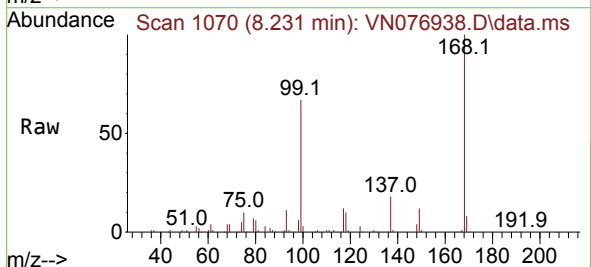
Instrument : MSVOA_N
 ClientSampleId : PB151341TB

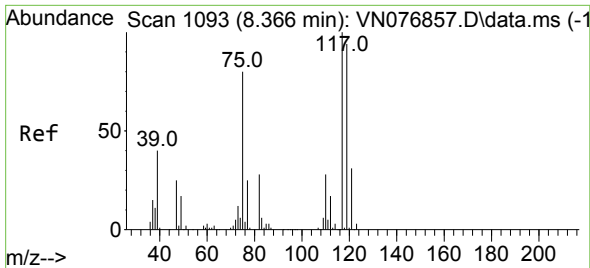
Tgt Ion	Resp	Lower	Upper
113	178492		
113	100		
111	100.4	81.8	122.8
192	18.5	13.9	20.9



#36
 1,1-Dichloropropene
 Concen: 5.122 ug/l
 RT: 8.231 min Scan# 1070
 Delta R.T. -0.147 min
 Lab File: VN076938.D
 Acq: 10 Mar 2023 20:50

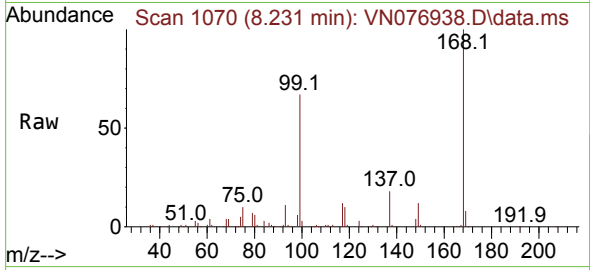
Tgt Ion	Resp	Lower	Upper
75	29687		
75	100		
110	10.6	18.9	56.9#
77	0.0	24.9	37.3#



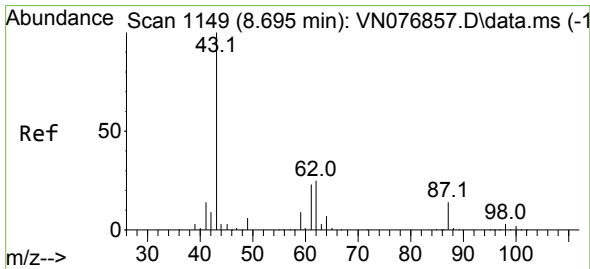
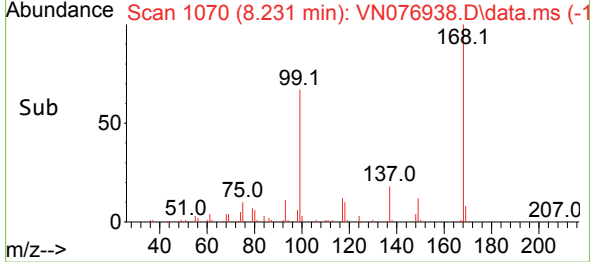
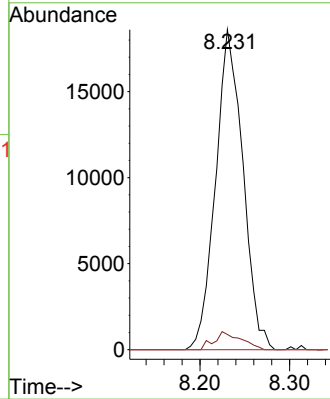


#38
 Carbon Tetrachloride
 Concen: 5.799 ug/l
 RT: 8.231 min Scan# 1172
 Delta R.T. -0.141 min
 Lab File: VN076938.D
 Acq: 10 Mar 2023 20:50

Instrument : MSVOA_N
 ClientSampleId : PB151341TB

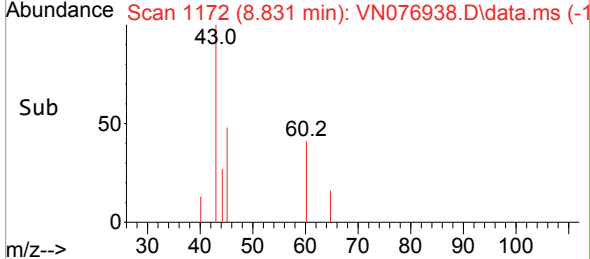
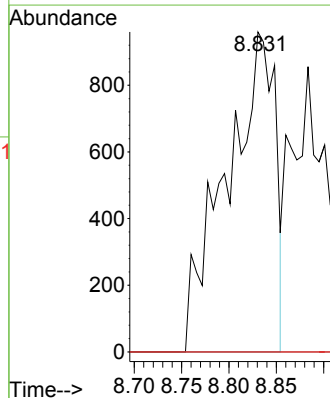
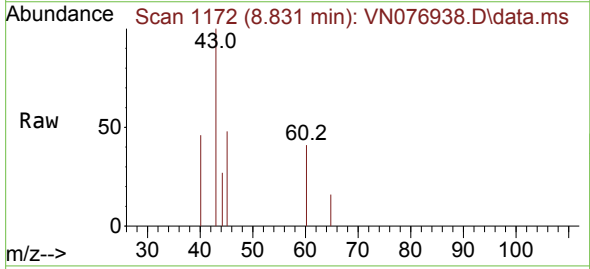


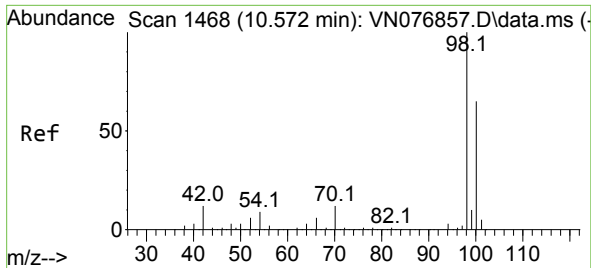
Tgt Ion:117 Resp: 39336
 Ion Ratio Lower Upper
 117 100
 119 4.7 76.9 115.3#
 121 0.0 23.2 34.8#



#43
 Isopropyl Acetate
 Concen: 0.419 ug/l
 RT: 8.831 min Scan# 1172
 Delta R.T. 0.135 min
 Lab File: VN076938.D
 Acq: 10 Mar 2023 20:50

Tgt Ion: 43 Resp: 3430
 Ion Ratio Lower Upper
 43 100
 61 0.0 26.2 39.2#
 87 0.0 14.8 22.2#

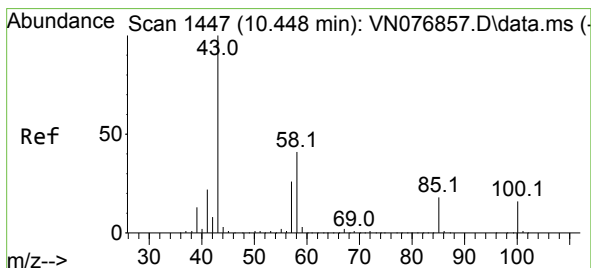
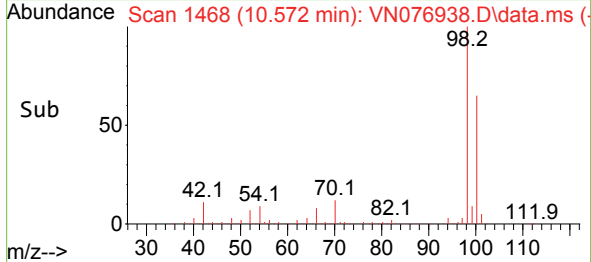
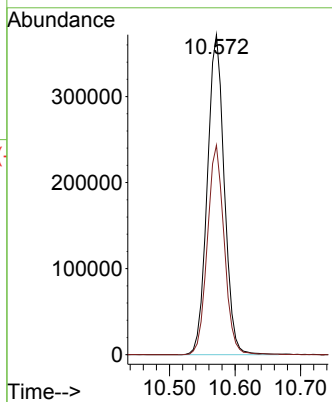
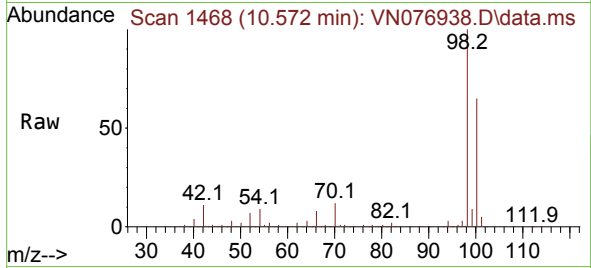




#50
 Toluene-d8
 Concen: 48.463 ug/l
 RT: 10.572 min Scan# 1468
 Delta R.T. -0.000 min
 Lab File: VN076938.D
 Acq: 10 Mar 2023 20:50

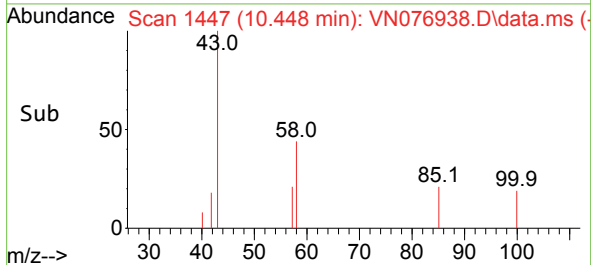
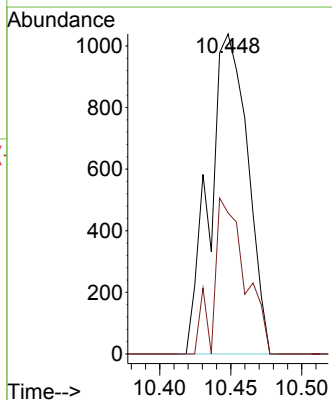
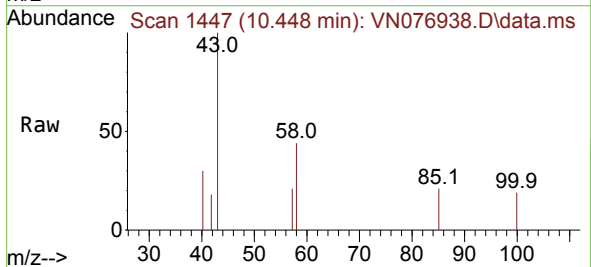
Instrument : MSVOA_N
 ClientSampleId : PB151341TB

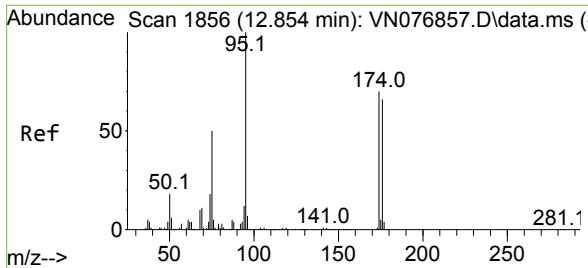
Tgt Ion: 98 Resp: 669280
 Ion Ratio Lower Upper
 98 100
 100 65.0 52.8 79.2



#51
 4-Methyl-2-Pentanone
 Concen: 0.394 ug/l
 RT: 10.448 min Scan# 1447
 Delta R.T. -0.000 min
 Lab File: VN076938.D
 Acq: 10 Mar 2023 20:50

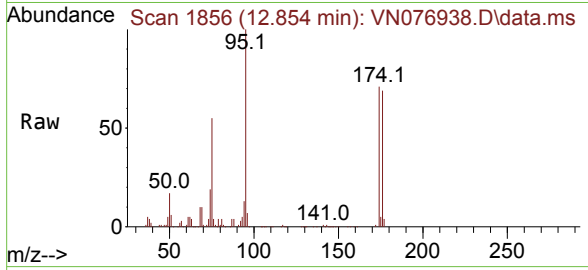
Tgt Ion: 43 Resp: 1935
 Ion Ratio Lower Upper
 43 100
 58 39.9 37.4 56.0





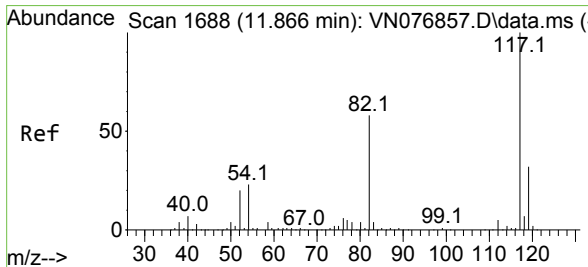
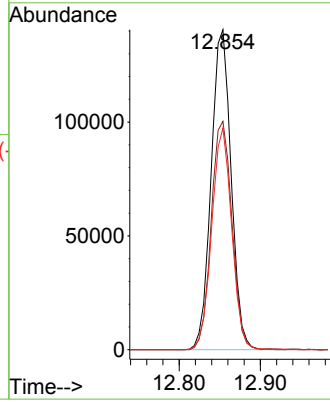
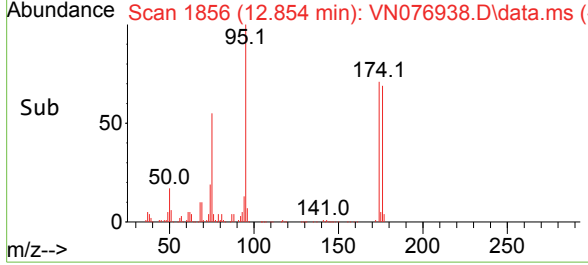
#62
 4-Bromofluorobenzene
 Concen: 47.428 ug/l
 RT: 12.854 min Scan# 1856
 Delta R.T. 0.006 min
 Lab File: VN076938.D
 Acq: 10 Mar 2023 20:50

Instrument : MSVOA_N
 ClientSampleId : PB151341TB

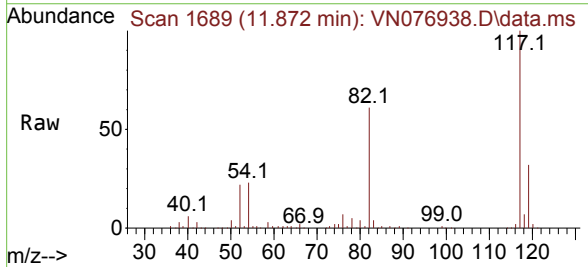


Tgt Ion: 95 Resp: 239576

Ion	Ratio	Lower	Upper
95	100		
174	74.1	0.0	162.4
176	69.4	0.0	157.4

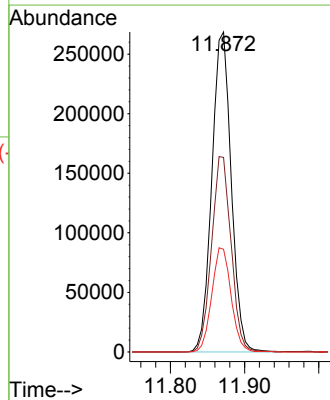
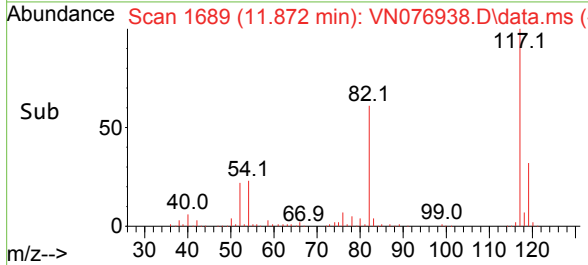


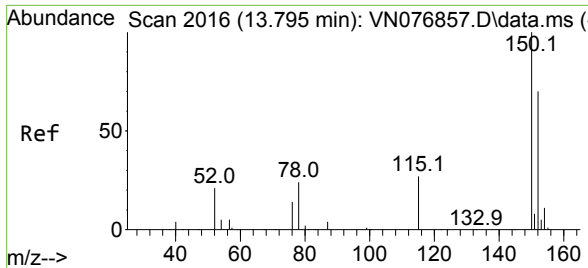
#63
 Chlorobenzene-d5
 Concen: 50.000 ug/l
 RT: 11.872 min Scan# 1689
 Delta R.T. 0.006 min
 Lab File: VN076938.D
 Acq: 10 Mar 2023 20:50



Tgt Ion: 117 Resp: 487623

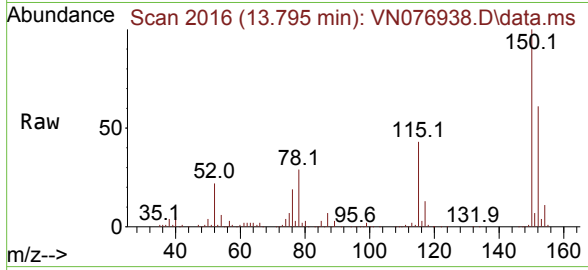
Ion	Ratio	Lower	Upper
117	100		
82	60.8	43.5	65.3
119	32.1	25.5	38.3



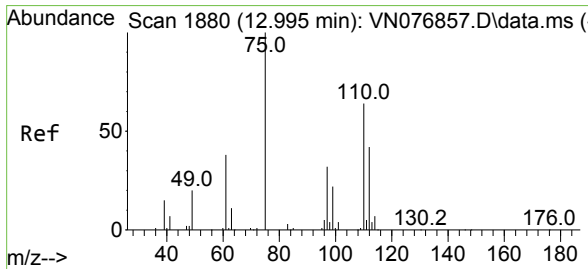
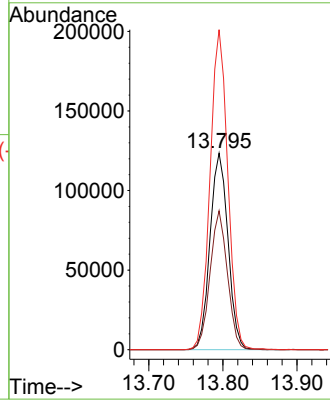
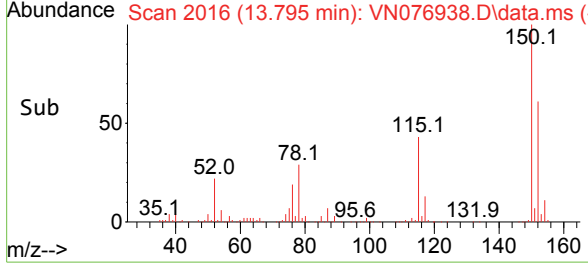


#72
 1,4-Dichlorobenzene-d4
 Concen: 50.000 ug/l
 RT: 13.795 min Scan# 20
 Delta R.T. -0.000 min
 Lab File: VN076938.D
 Acq: 10 Mar 2023 20:50

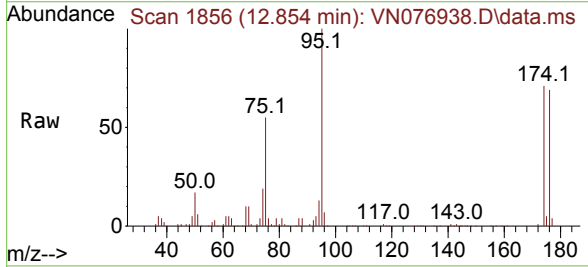
Instrument : MSVOA_N
 ClientSampleId : PB151341TB



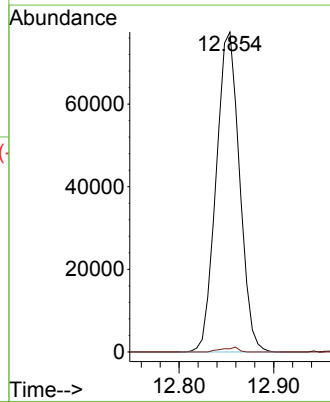
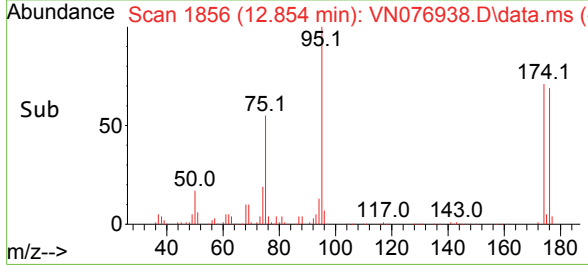
Tgt Ion:152 Resp: 208279
 Ion Ratio Lower Upper
 152 100
 115 68.0 30.3 90.9
 150 160.4 0.0 353.6

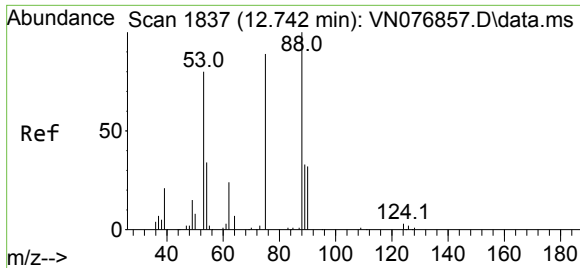


#76
 1,2,3-Trichloropropane
 Concen: 26.306 ug/l
 RT: 12.854 min Scan# 1856
 Delta R.T. -0.141 min
 Lab File: VN076938.D
 Acq: 10 Mar 2023 20:50



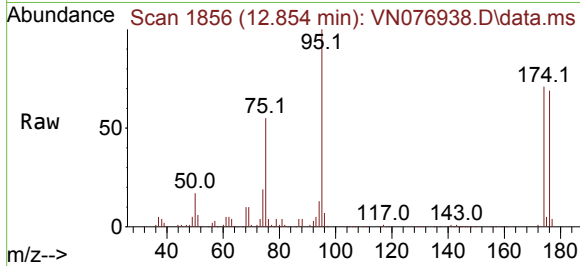
Tgt Ion: 75 Resp: 132836
 Ion Ratio Lower Upper
 75 100
 77 1.0 93.8 281.4#





#81
 trans-1,4-Dichloro-2-butene
 Concen: 85.929 ug/l
 RT: 12.854 min Scan# 11
 Delta R.T. 0.112 min
 Lab File: VN076938.D
 Acq: 10 Mar 2023 20:50

Instrument :
 MSVOA_N
 ClientSampleId :
 PB151341TB



Tgt Ion: 75 Resp: 132836

Ion	Ratio	Lower	Upper
75	100		
53	0.0	67.4	101.0#
89	0.0	39.5	59.3#

