

Data Path : Z:\voasrv\HPCHEM1\MSVOA_N\Data\VN031125\
 Data File : VN085940.D
 Acq On : 11 Mar 2025 18:40
 Operator : JC\MD
 Sample : PB167050ZHE#06
 Misc : 5.0mL/MSVOA_N/WATER
 ALS Vial : 15 Sample Multiplier: 1

Instrument :
 MSVOA_N
 ClientSampleId :

Quant Time: Mar 12 01:27:13 2025
 Quant Method : Z:\voasrv\HPCHEM1\MSVOA_N\methods\82N021825W.M
 Quant Title : SW846 8260
 QLast Update : Wed Feb 19 03:43:32 2025
 Response via : Initial Calibration

Compound	R.T.	QIon	Response	Conc	Units	Dev(Min)

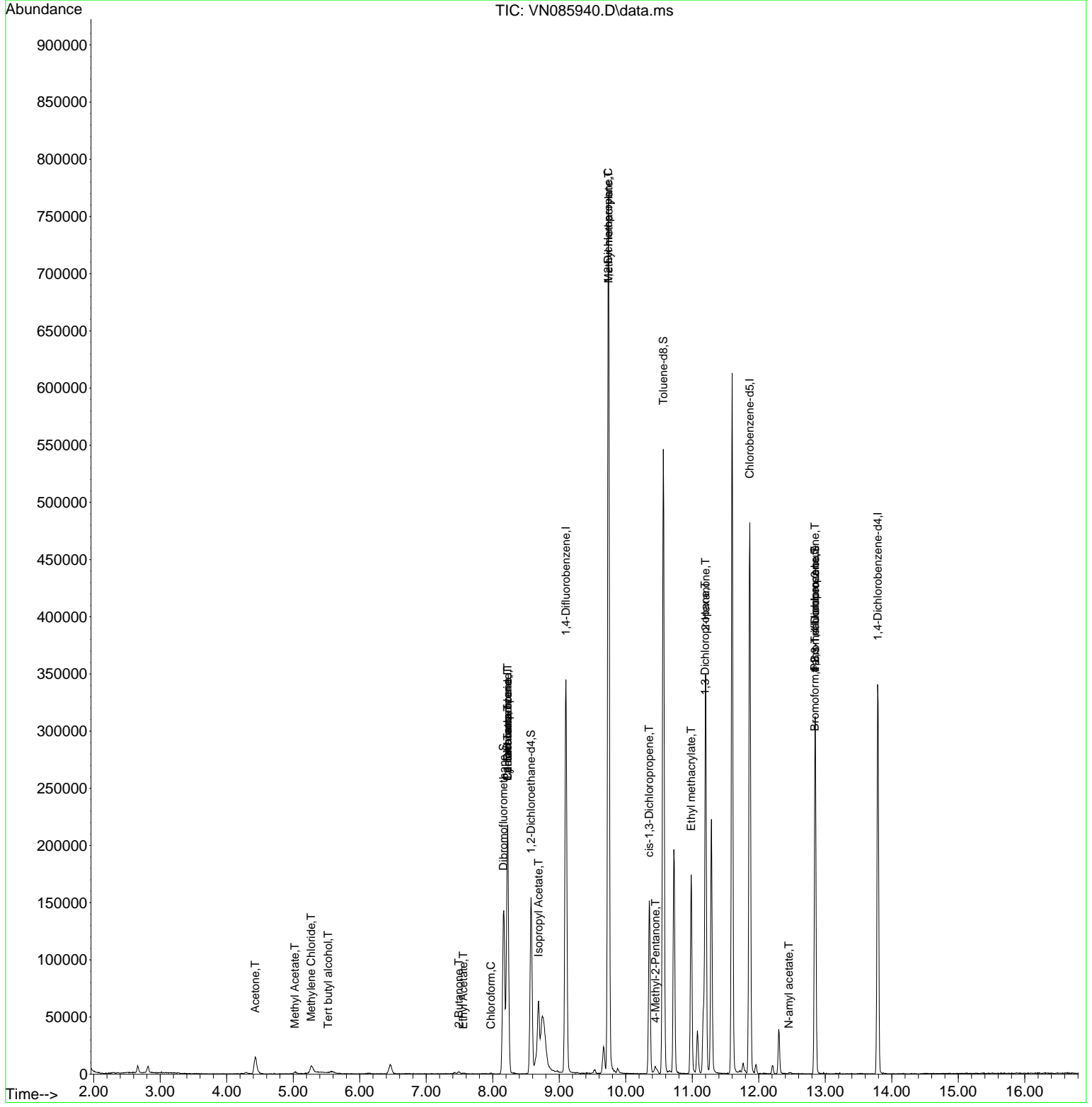
Internal Standards						
1) Pentafluorobenzene	8.224	168	151984	50.000	ug/l	0.00
34) 1,4-Difluorobenzene	9.100	114	298839	50.000	ug/l	0.00
63) Chlorobenzene-d5	11.865	117	278612	50.000	ug/l	0.00
72) 1,4-Dichlorobenzene-d4	13.788	152	94621	50.000	ug/l	0.00
System Monitoring Compounds						
33) 1,2-Dichloroethane-d4	8.577	65	125448	63.666	ug/l	0.00
Spiked Amount	50.000	Range 74 - 125	Recovery	=	127.340%#	
35) Dibromofluoromethane	8.159	113	103759	53.061	ug/l	0.00
Spiked Amount	50.000	Range 75 - 124	Recovery	=	106.120%	
50) Toluene-d8	10.565	98	385323	54.160	ug/l	0.00
Spiked Amount	50.000	Range 86 - 113	Recovery	=	108.320%	
62) 4-Bromofluorobenzene	12.847	95	108665	46.357	ug/l	0.00
Spiked Amount	50.000	Range 77 - 121	Recovery	=	92.720%	
Target Compounds						
						Qvalue
11) Tert butyl alcohol	5.524	59	56	0.231	ug/l #	72
16) Acetone	4.430	43	27207	43.638	ug/l #	85
18) Methyl Acetate	5.024	43	1490	0.695	ug/l	90
20) Methylene Chloride	5.271	84	5306	2.646	ug/l	92
25) 2-Butanone	7.489	43	3269	3.564	ug/l	97
30) Chloroform	7.971	83	751	0.214	ug/l #	18
31) Cyclohexane	8.224	56	3135	1.114	ug/l #	1
36) 1,1-Dichloropropene	8.224	75	13060	4.719	ug/l #	49
37) Ethyl Acetate	7.559	43	860	0.378	ug/l #	66
38) Carbon Tetrachloride	8.224	117	16602	5.049	ug/l #	17
43) Isopropyl Acetate	8.688	43	75220	18.475	ug/l #	82
45) 1,2-Dichloropropane	9.736	63	1203	0.562	ug/l #	43
48) Methyl methacrylate	9.741	41	68079	40.250	ug/l #	36
51) 4-Methyl-2-Pentanone	10.447	43	6845	3.117	ug/l #	70
54) cis-1,3-Dichloropropene	10.353	75	27576	8.417	ug/l #	67
56) Ethyl methacrylate	10.982	69	1408	0.988	ug/l #	1
57) 1,3-Dichloropropane	11.194	76	3592	1.041	ug/l #	42
59) 2-Hexanone	11.200	43	44206	29.264	ug/l #	52
71) Bromoform	12.841	173	421	0.247	ug/l #	27
74) N-amyl acetate	12.453	43	709	0.310	ug/l #	37
76) 1,2,3-Trichloropropane	12.847	75	55523	26.416	ug/l #	1
81) trans-1,4-Dichloro-2-b...	12.847	75	55523	77.076	ug/l #	13

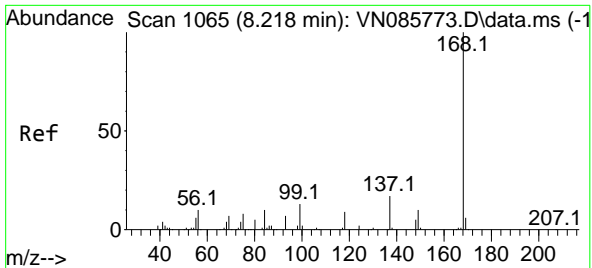
(#) = qualifier out of range (m) = manual integration (+) = signals summed

Data Path : Z:\voasrv\HPCHEM1\MSVOA_N\Data\VN031125\
 Data File : VN085940.D
 Acq On : 11 Mar 2025 18:40
 Operator : JC\MD
 Sample : PB167050ZHE#06
 Misc : 5.0mL/MSVOA_N/WATER
 ALS Vial : 15 Sample Multiplier: 1

Instrument :
 MSVOA_N
 ClientSampleId :

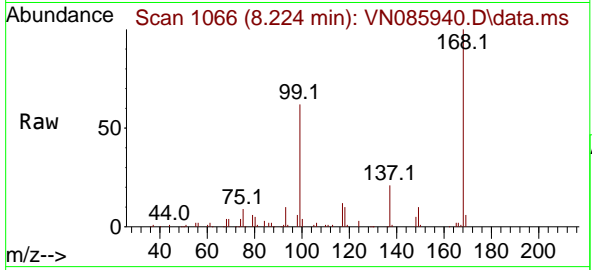
Quant Time: Mar 12 01:27:13 2025
 Quant Method : Z:\voasrv\HPCHEM1\MSVOA_N\methods\82N021825W.M
 Quant Title : SW846 8260
 QLast Update : Wed Feb 19 03:43:32 2025
 Response via : Initial Calibration



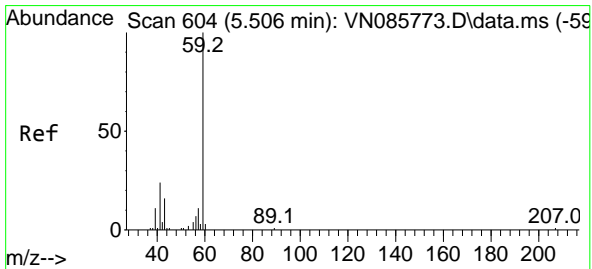
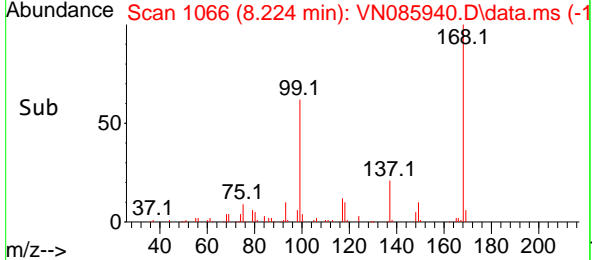
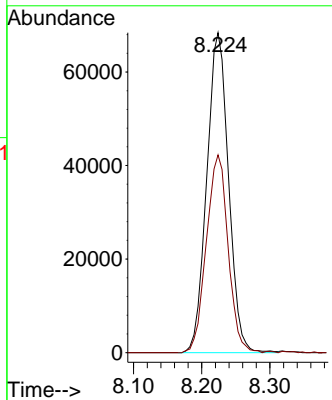


#1
 Pentafluorobenzene
 Concen: 50.000 ug/l
 RT: 8.224 min Scan# 1066
 Delta R.T. 0.006 min
 Lab File: VN085940.D
 Acq: 11 Mar 2025 18:40

Instrument :
 MSVOA_N
 ClientSampleId :

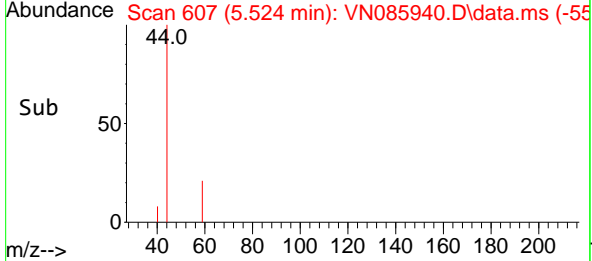
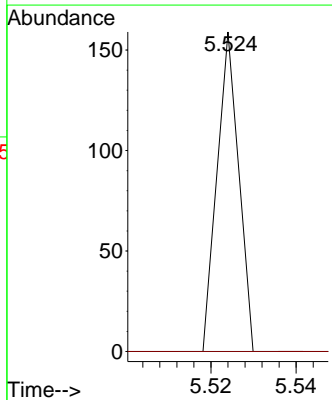
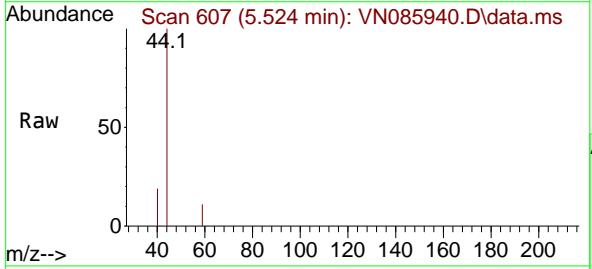


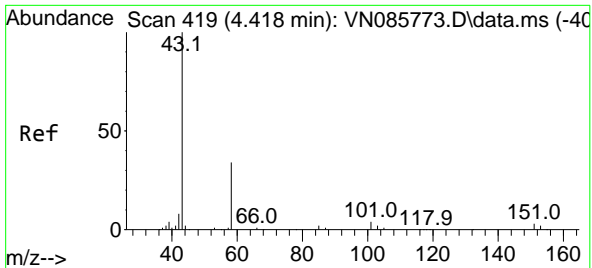
Tgt Ion:168 Resp: 151984
 Ion Ratio Lower Upper
 168 100
 99 61.8 47.9 71.9



#11
 Tert butyl alcohol
 Concen: 0.231 ug/l
 RT: 5.524 min Scan# 607
 Delta R.T. 0.018 min
 Lab File: VN085940.D
 Acq: 11 Mar 2025 18:40

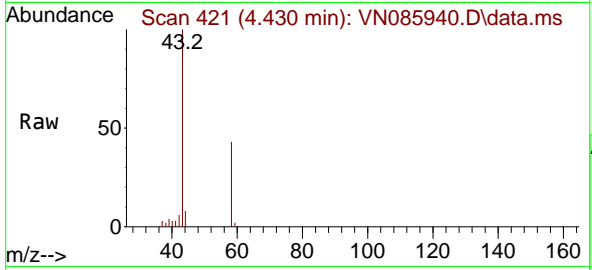
Tgt Ion: 59 Resp: 56
 Ion Ratio Lower Upper
 59 100
 57 0.0 8.3 12.5#



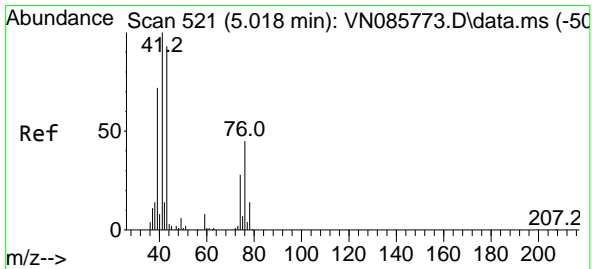
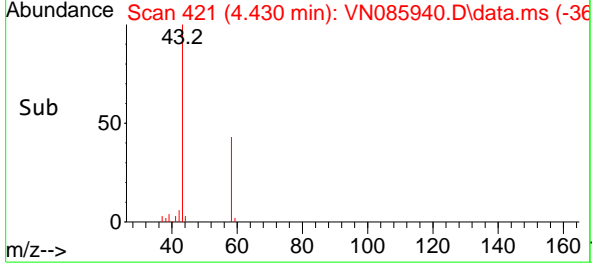
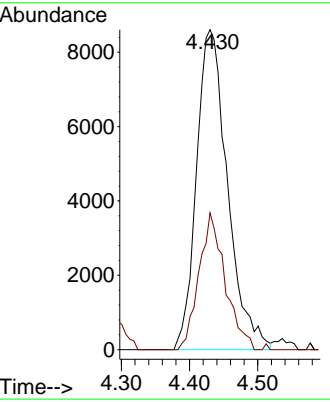


#16
 Acetone
 Concen: 43.638 ug/l
 RT: 4.430 min Scan# 41
 Delta R.T. 0.012 min
 Lab File: VN085940.D
 Acq: 11 Mar 2025 18:40

Instrument : MSVOA_N
 ClientSampleId :

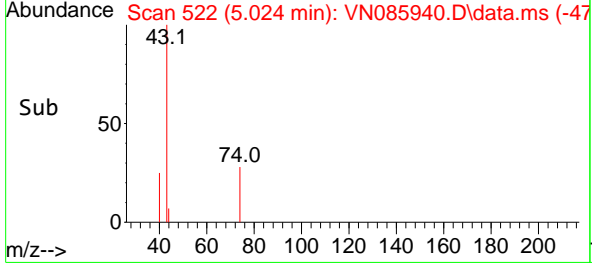
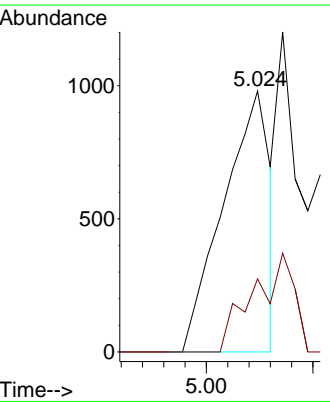
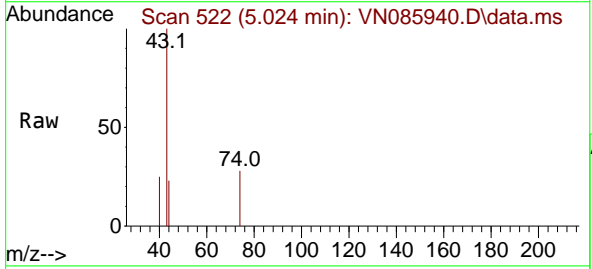


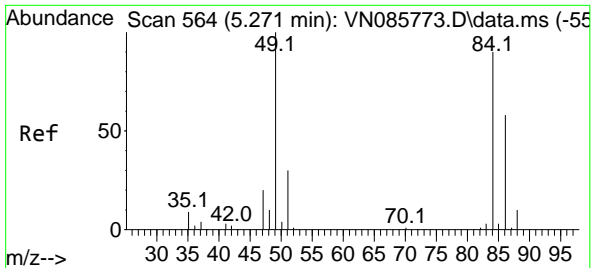
Tgt Ion: 43 Resp: 27207
 Ion Ratio Lower Upper
 43 100
 58 42.8 27.5 41.3#



#18
 Methyl Acetate
 Concen: 0.695 ug/l
 RT: 5.024 min Scan# 522
 Delta R.T. 0.006 min
 Lab File: VN085940.D
 Acq: 11 Mar 2025 18:40

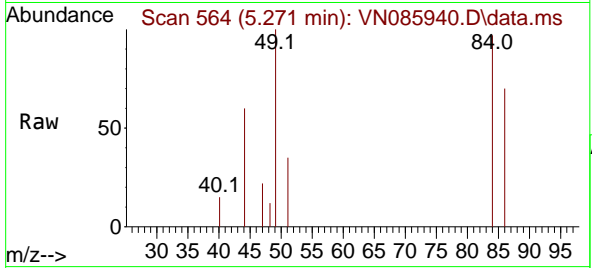
Tgt Ion: 43 Resp: 1490
 Ion Ratio Lower Upper
 43 100
 74 33.1 22.2 33.4





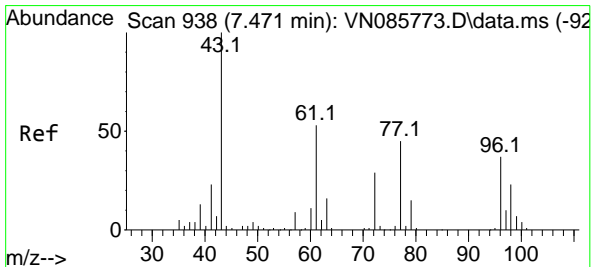
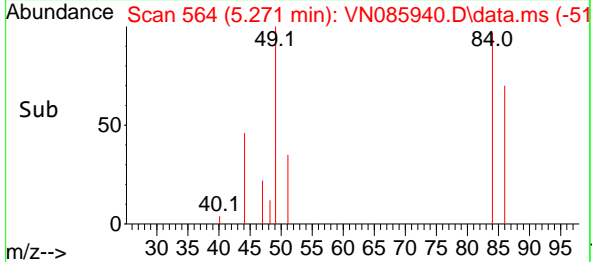
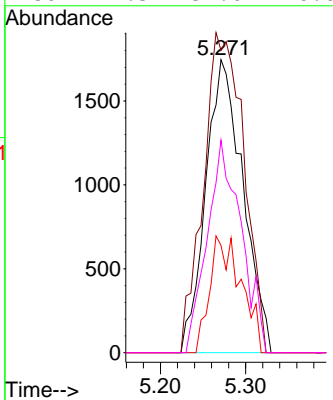
#20
 Methylene Chloride
 Concen: 2.646 ug/l
 RT: 5.271 min Scan# 51
 Delta R.T. 0.000 min
 Lab File: VN085940.D
 Acq: 11 Mar 2025 18:40

Instrument :
 MSVOA_N
 ClientSampleId :



Tgt Ion: 84 Resp: 5306

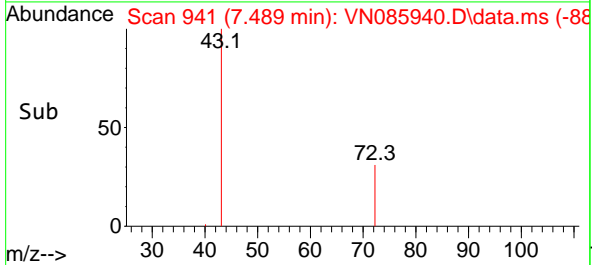
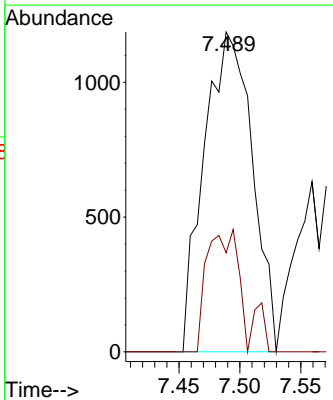
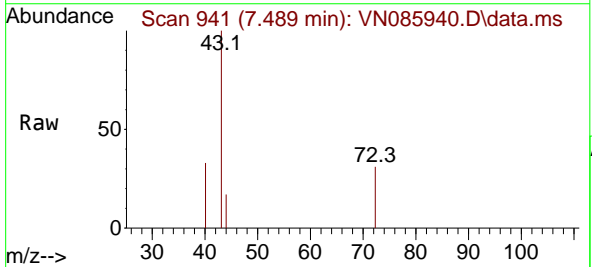
Ion	Ratio	Lower	Upper
84	100		
49	103.2	88.4	132.6
51	36.6	26.6	40.0
86	72.5	51.0	76.6

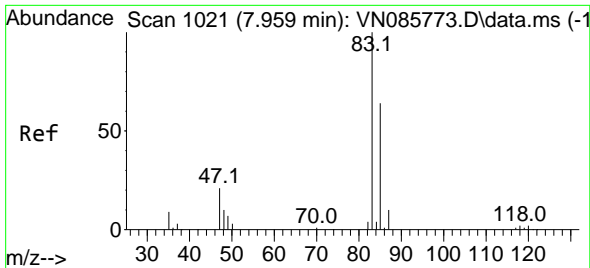


#25
 2-Butanone
 Concen: 3.564 ug/l
 RT: 7.489 min Scan# 941
 Delta R.T. 0.018 min
 Lab File: VN085940.D
 Acq: 11 Mar 2025 18:40

Tgt Ion: 43 Resp: 3269

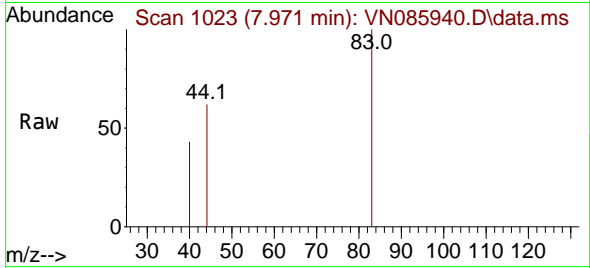
Ion	Ratio	Lower	Upper
43	100		
72	31.0	23.6	35.4



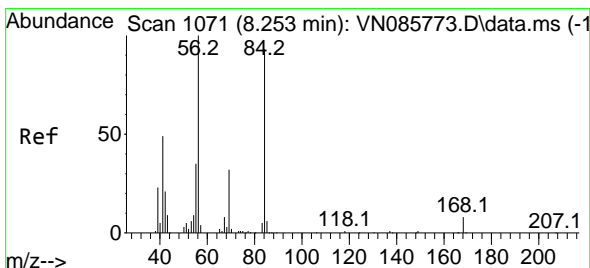
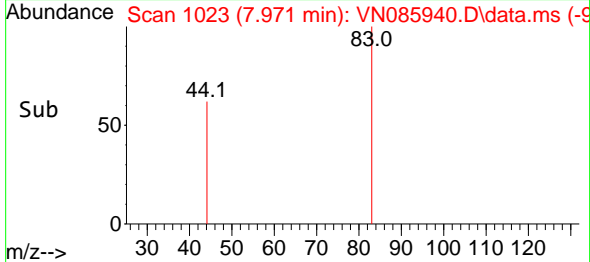
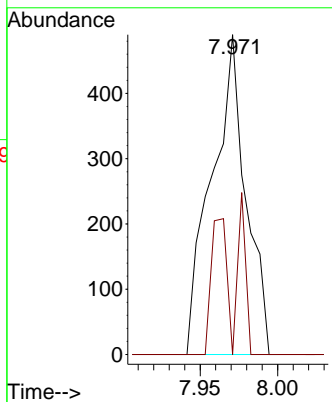


#30
 Chloroform
 Concen: 0.214 ug/l
 RT: 7.971 min Scan# 1066
 Delta R.T. 0.012 min
 Lab File: VN085940.D
 Acq: 11 Mar 2025 18:40

Instrument :
 MSVOA_N
 ClientSampleId :

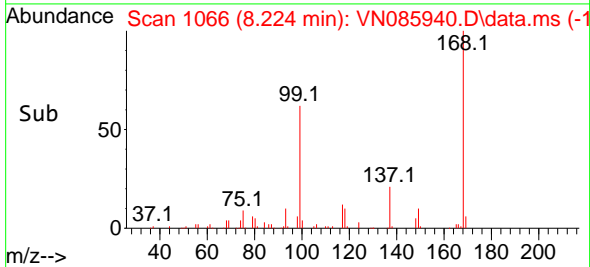
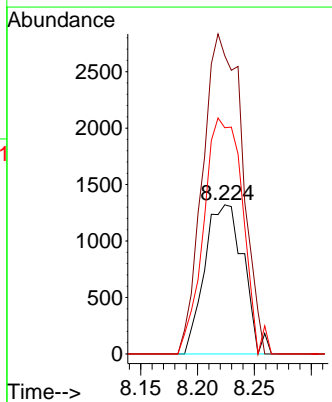
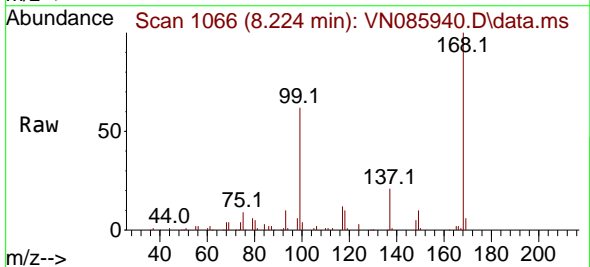


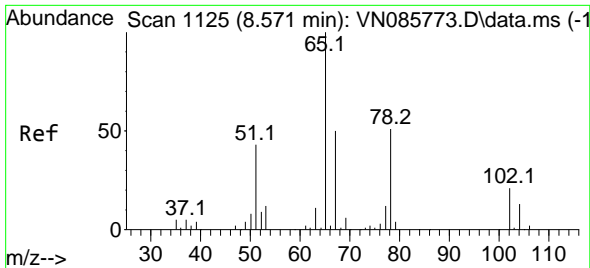
Tgt Ion: 83 Resp: 751
 Ion Ratio Lower Upper
 83 100
 85 0.0 50.9 76.3#



#31
 Cyclohexane
 Concen: 1.114 ug/l
 RT: 8.224 min Scan# 1066
 Delta R.T. -0.029 min
 Lab File: VN085940.D
 Acq: 11 Mar 2025 18:40

Tgt Ion: 56 Resp: 3135
 Ion Ratio Lower Upper
 56 100
 69 199.9 25.8 38.6#
 84 151.6 74.5 111.7#

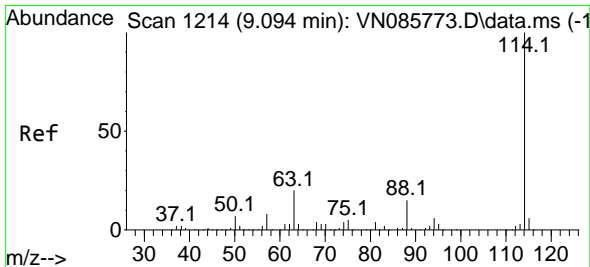
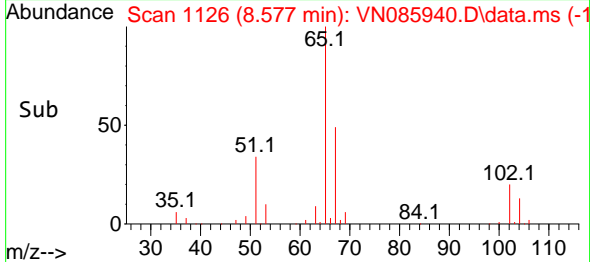
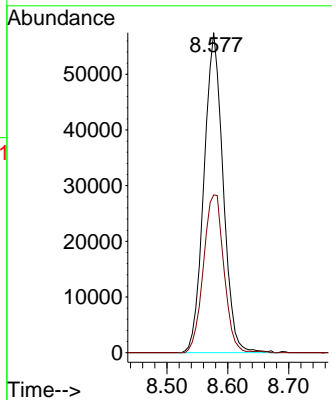
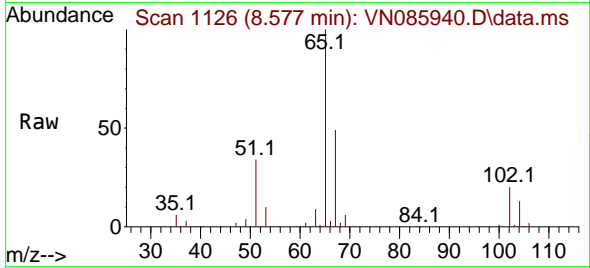




#33
 1,2-Dichloroethane-d4
 Concen: 63.666 ug/l
 RT: 8.577 min Scan# 1125
 Delta R.T. 0.006 min
 Lab File: VN085940.D
 Acq: 11 Mar 2025 18:40

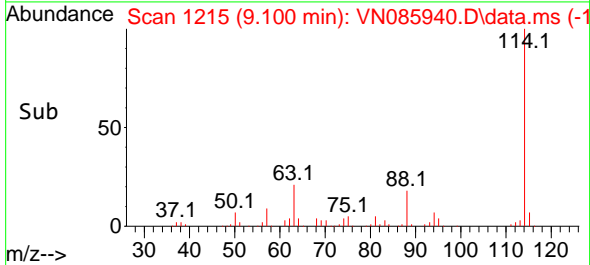
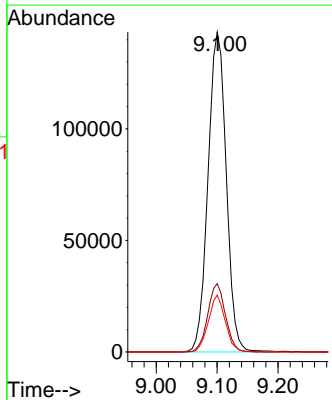
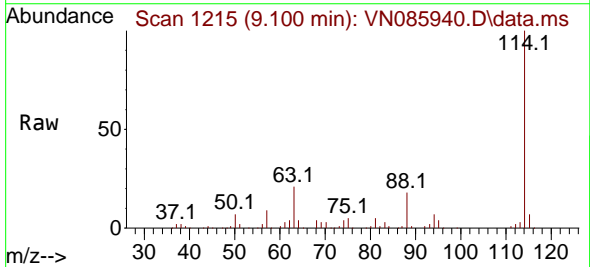
Instrument :
 MSVOA_N
 ClientSampleId :

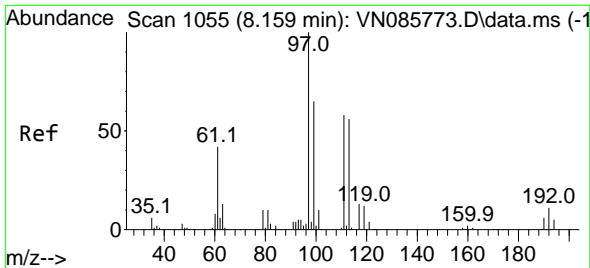
Tgt Ion: 65 Resp: 125448
 Ion Ratio Lower Upper
 65 100
 67 52.8 0.0 106.2



#34
 1,4-Difluorobenzene
 Concen: 50.000 ug/l
 RT: 9.100 min Scan# 1215
 Delta R.T. 0.006 min
 Lab File: VN085940.D
 Acq: 11 Mar 2025 18:40

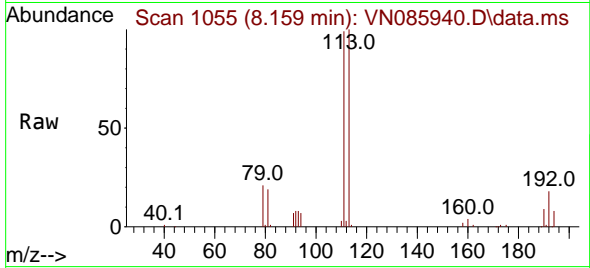
Tgt Ion:114 Resp: 298839
 Ion Ratio Lower Upper
 114 100
 63 21.3 0.0 39.2
 88 17.7 0.0 30.0



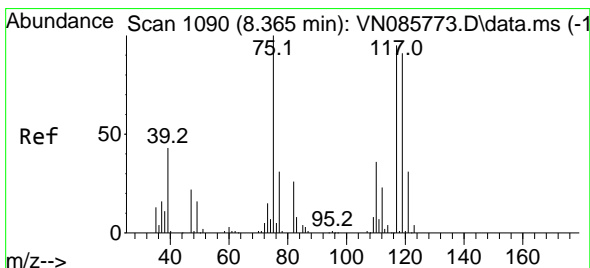
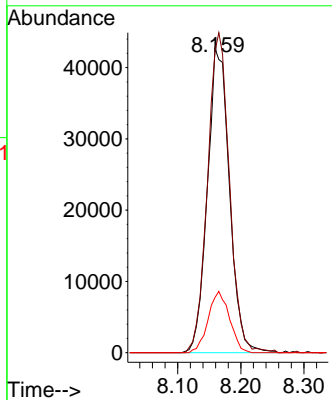
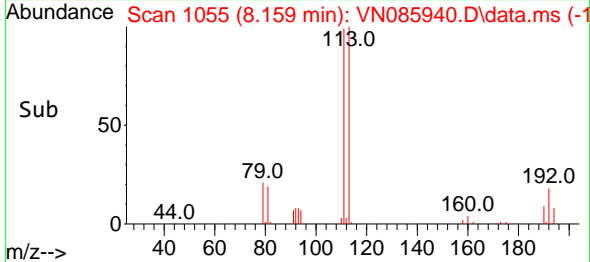


#35
 Dibromofluoromethane
 Concen: 53.061 ug/l
 RT: 8.159 min Scan# 1065
 Delta R.T. 0.000 min
 Lab File: VN085940.D
 Acq: 11 Mar 2025 18:40

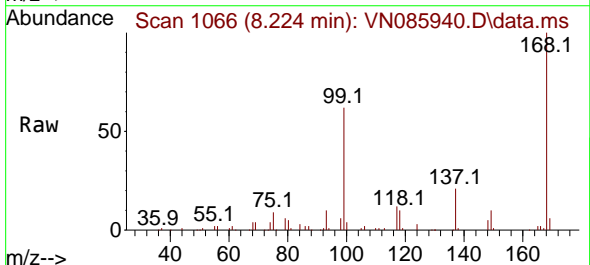
Instrument : MSVOA_N
 ClientSampleId :



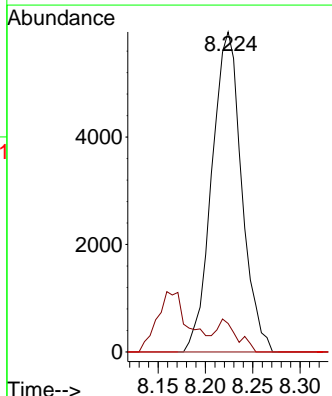
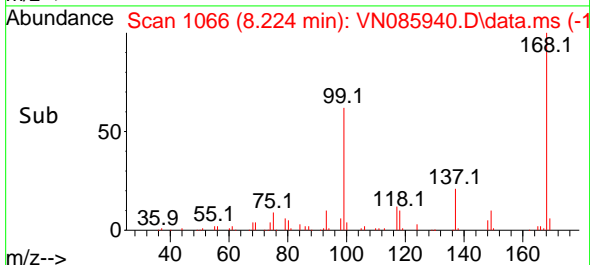
Tgt Ion:113 Resp: 103759
 Ion Ratio Lower Upper
 113 100
 111 104.1 82.2 123.4
 192 19.4 14.7 22.1

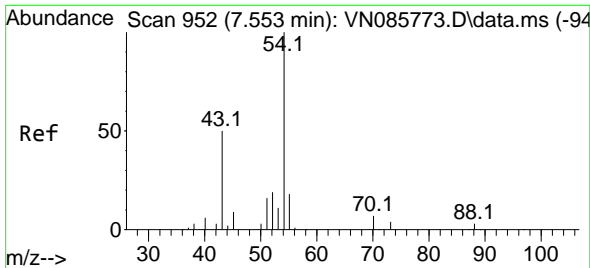


#36
 1,1-Dichloropropene
 Concen: 4.719 ug/l
 RT: 8.224 min Scan# 1066
 Delta R.T. -0.141 min
 Lab File: VN085940.D
 Acq: 11 Mar 2025 18:40



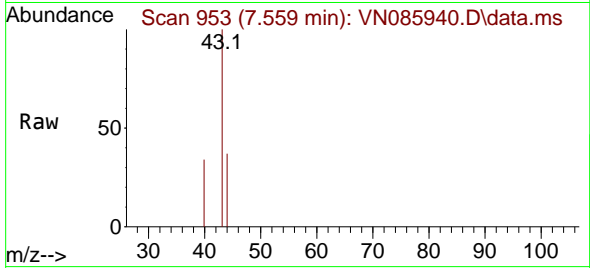
Tgt Ion: 75 Resp: 13060
 Ion Ratio Lower Upper
 75 100
 110 7.7 17.3 52.0#
 77 0.0 24.6 37.0#





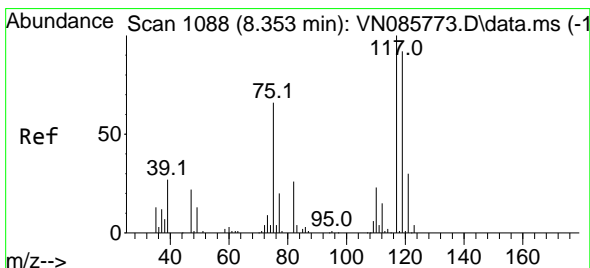
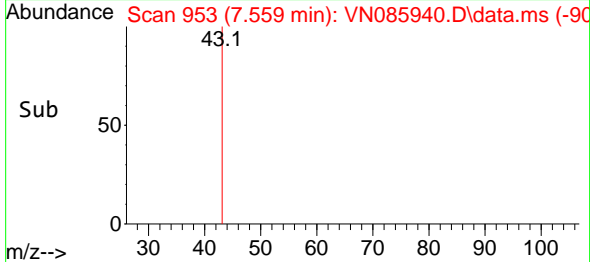
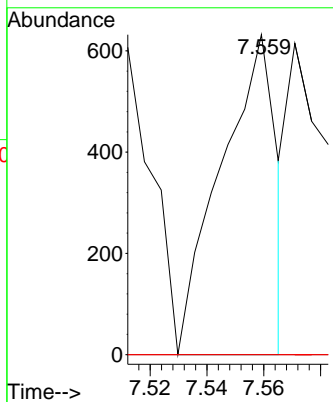
#37
 Ethyl Acetate
 Concen: 0.378 ug/l
 RT: 7.559 min Scan# 911
 Delta R.T. 0.006 min
 Lab File: VN085940.D
 Acq: 11 Mar 2025 18:40

Instrument :
 MSVOA_N
 ClientSampleId :



Tgt Ion: 43 Resp: 860

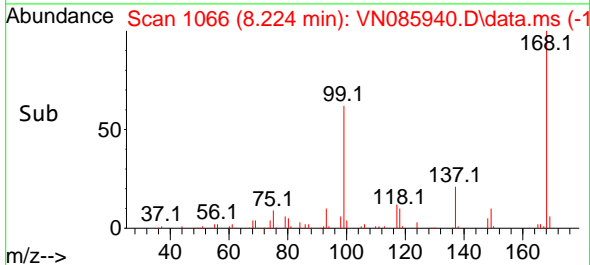
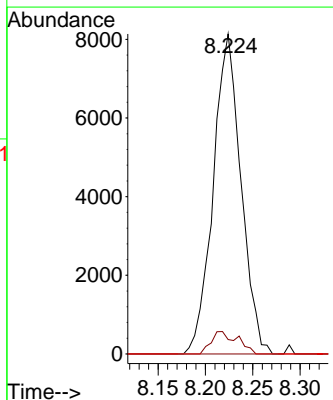
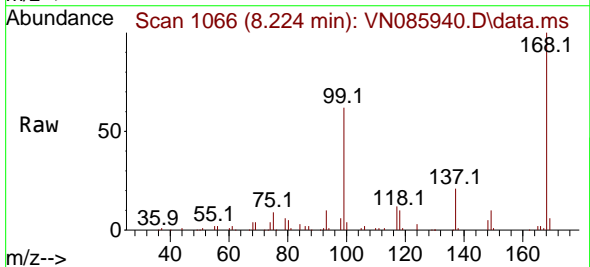
Ion	Ratio	Lower	Upper
43	100		
61	0.0	12.2	18.2#
70	0.0	9.5	14.3#

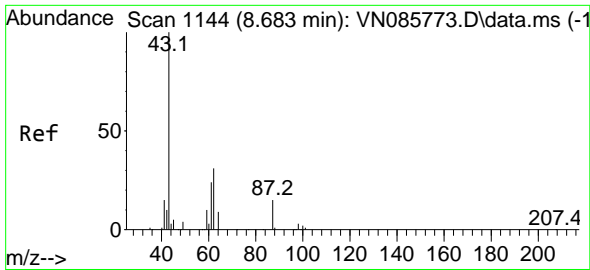


#38
 Carbon Tetrachloride
 Concen: 5.049 ug/l
 RT: 8.224 min Scan# 1066
 Delta R.T. -0.129 min
 Lab File: VN085940.D
 Acq: 11 Mar 2025 18:40

Tgt Ion: 117 Resp: 16602

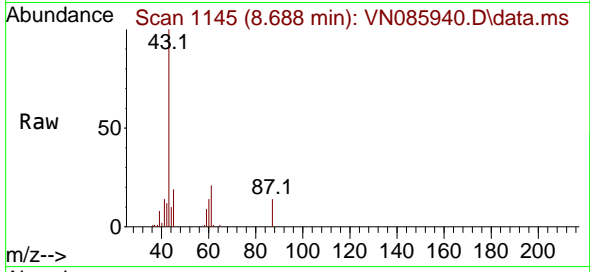
Ion	Ratio	Lower	Upper
117	100		
119	4.5	73.8	110.6#
121	0.0	24.3	36.5#



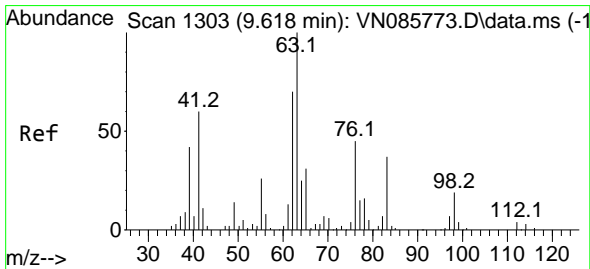
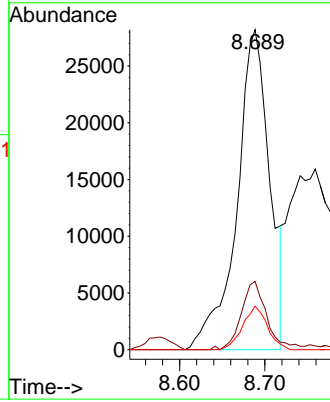
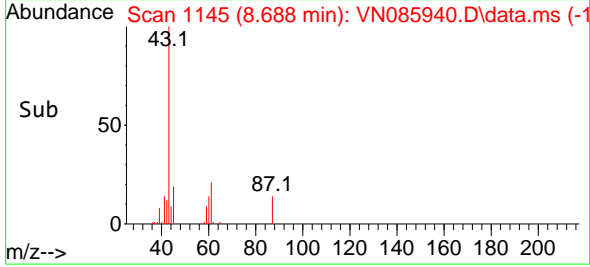


#43
 Isopropyl Acetate
 Concen: 18.475 ug/l
 RT: 8.688 min Scan# 1144
 Delta R.T. 0.005 min
 Lab File: VN085940.D
 Acq: 11 Mar 2025 18:40

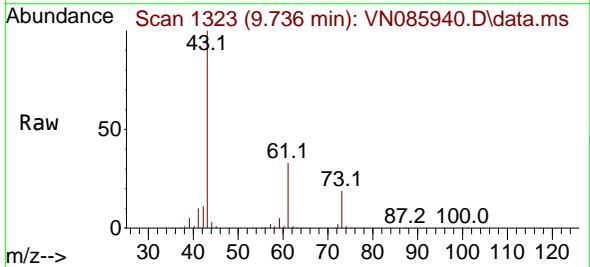
Instrument :
 MSVOA_N
 ClientSampleId :



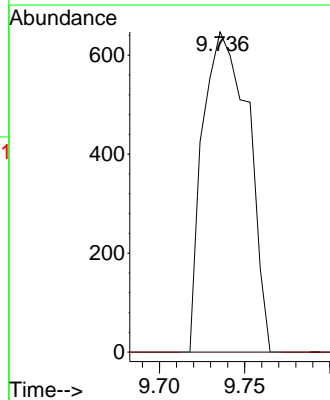
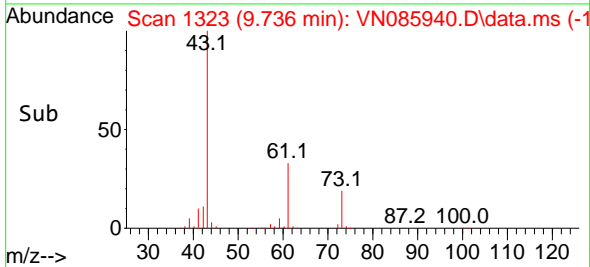
Tgt Ion: 43 Resp: 75220
 Ion Ratio Lower Upper
 43 100
 61 16.8 22.6 34.0#
 87 10.2 11.8 17.8#

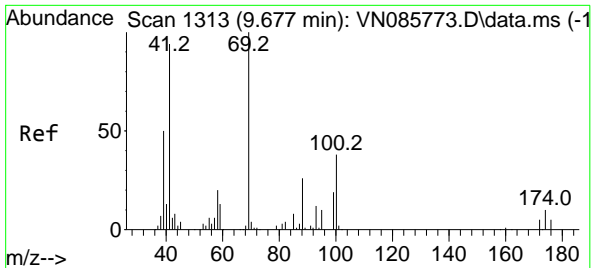


#45
 1,2-Dichloropropane
 Concen: 0.562 ug/l
 RT: 9.736 min Scan# 1323
 Delta R.T. 0.118 min
 Lab File: VN085940.D
 Acq: 11 Mar 2025 18:40



Tgt Ion: 63 Resp: 1203
 Ion Ratio Lower Upper
 63 100
 65 0.0 25.1 37.7#

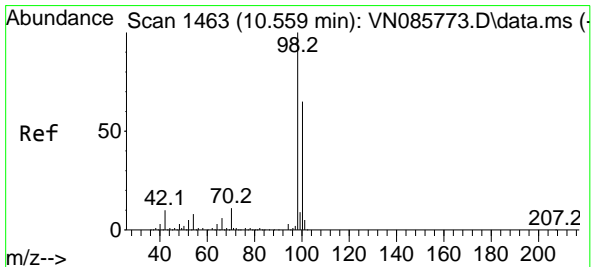
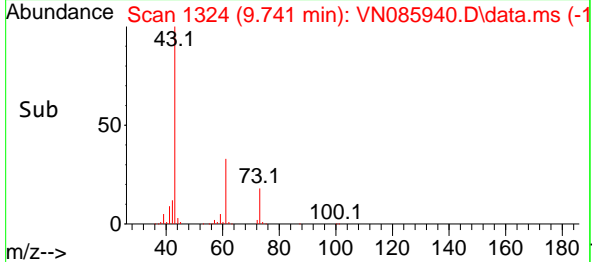
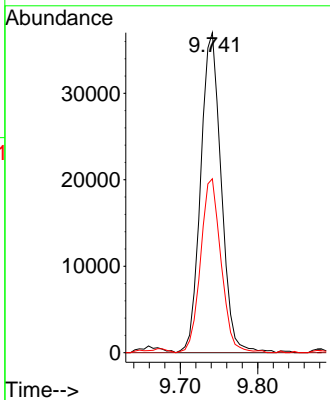
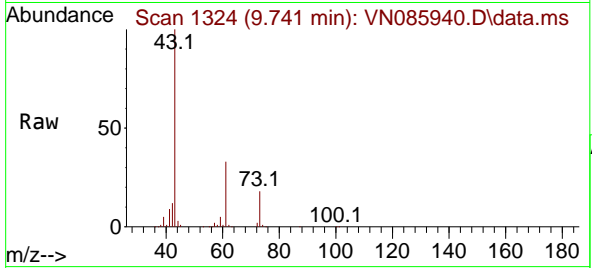




#48
 Methyl methacrylate
 Concen: 40.250 ug/l
 RT: 9.741 min Scan# 11
 Delta R.T. 0.065 min
 Lab File: VN085940.D
 Acq: 11 Mar 2025 18:40

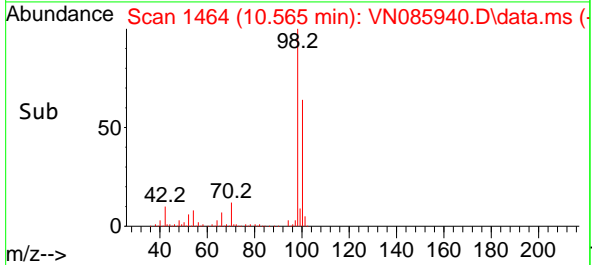
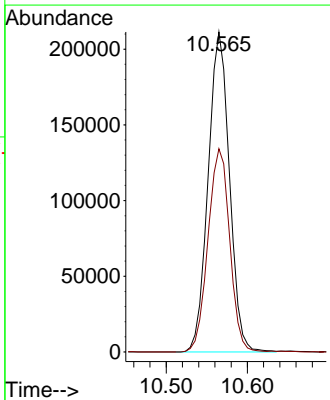
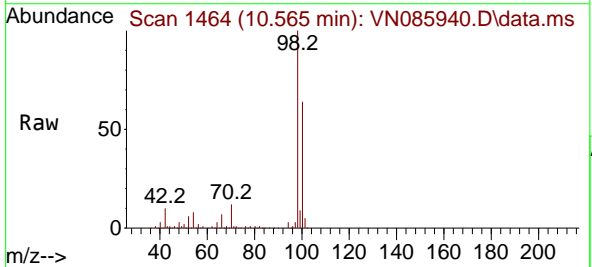
Instrument : MSVOA_N
 ClientSampleId :

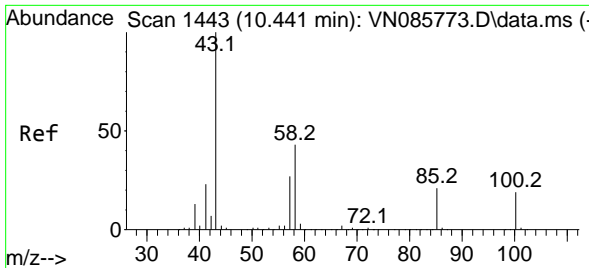
Tgt Ion	Resp	Lower	Upper
41	68079		
69	0.0	76.0	114.0#
39	54.3	42.3	63.5



#50
 Toluene-d8
 Concen: 54.160 ug/l
 RT: 10.565 min Scan# 1464
 Delta R.T. 0.006 min
 Lab File: VN085940.D
 Acq: 11 Mar 2025 18:40

Tgt Ion	Resp	Lower	Upper
98	385323		
100	64.7	52.1	78.1

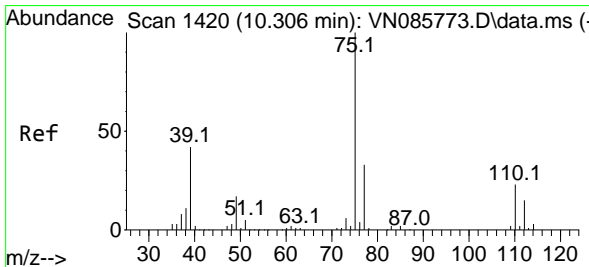
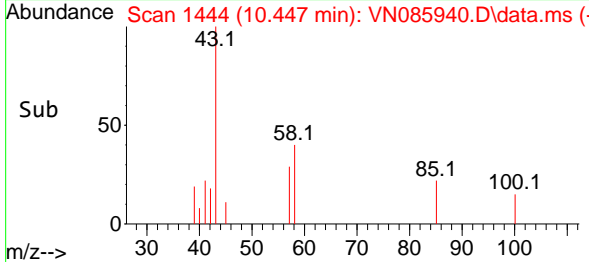
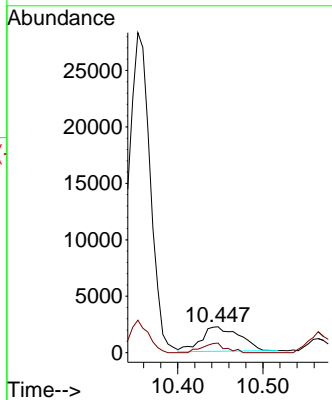
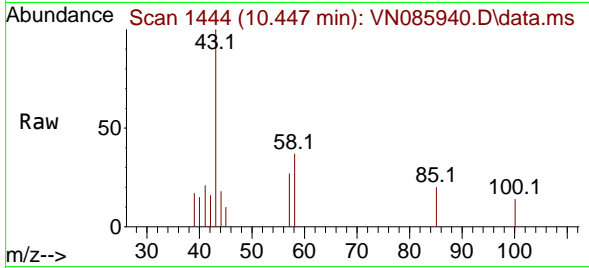




#51
 4-Methyl-2-Pentanone
 Concen: 3.117 ug/l
 RT: 10.447 min Scan# 1443
 Delta R.T. 0.006 min
 Lab File: VN085940.D
 Acq: 11 Mar 2025 18:40

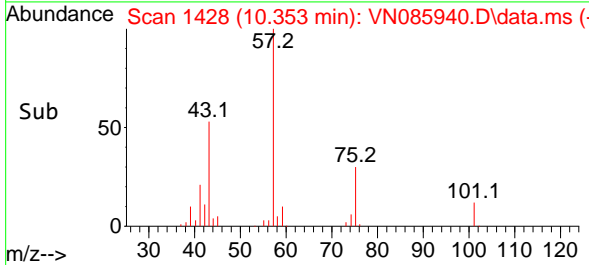
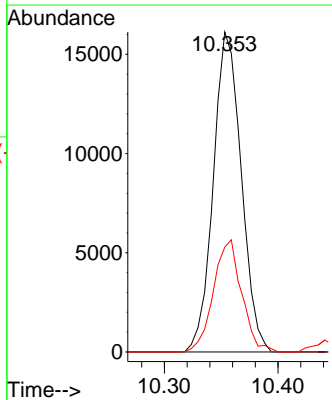
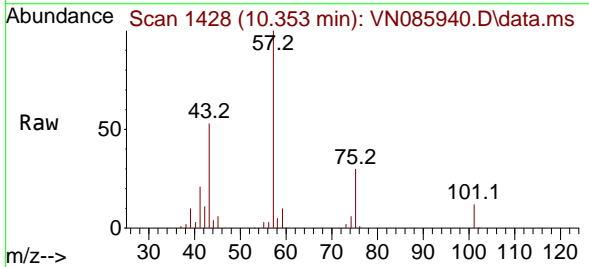
Instrument : MSVOA_N
 ClientSampleId :

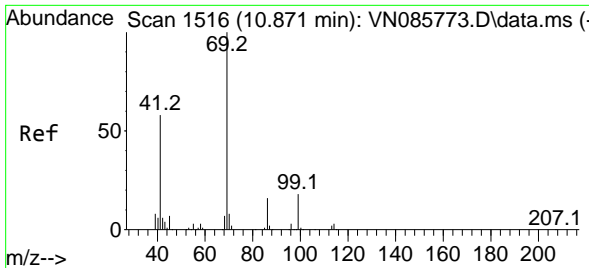
Tgt Ion: 43 Resp: 6845
 Ion Ratio Lower Upper
 43 100
 58 23.8 34.6 52.0#



#54
 cis-1,3-Dichloropropene
 Concen: 8.417 ug/l
 RT: 10.353 min Scan# 1428
 Delta R.T. 0.047 min
 Lab File: VN085940.D
 Acq: 11 Mar 2025 18:40

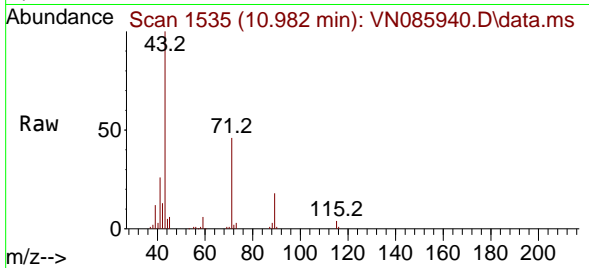
Tgt Ion: 75 Resp: 27576
 Ion Ratio Lower Upper
 75 100
 77 0.0 26.1 39.1#
 39 32.7 33.4 50.0#



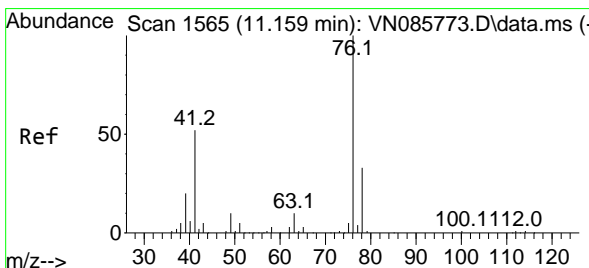
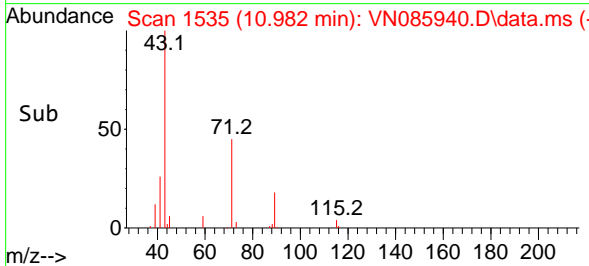
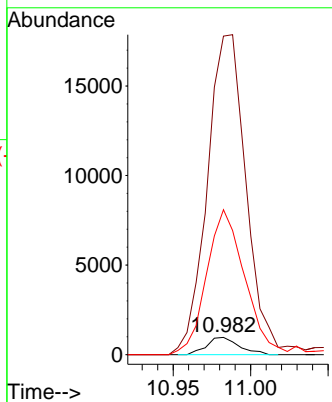


#56
 Ethyl methacrylate
 Concen: 0.988 ug/l
 RT: 10.982 min Scan# 1535
 Delta R.T. 0.111 min
 Lab File: VN085940.D
 Acq: 11 Mar 2025 18:40

Instrument : MSVOA_N
 ClientSampleId :

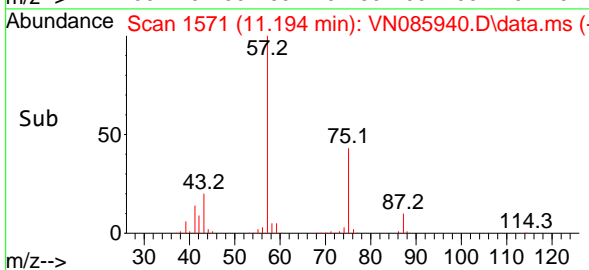
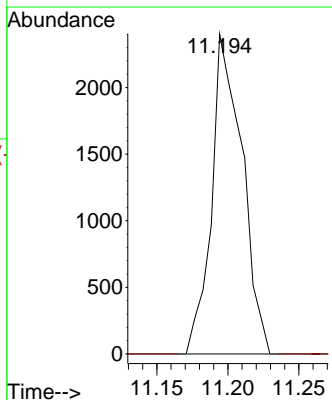
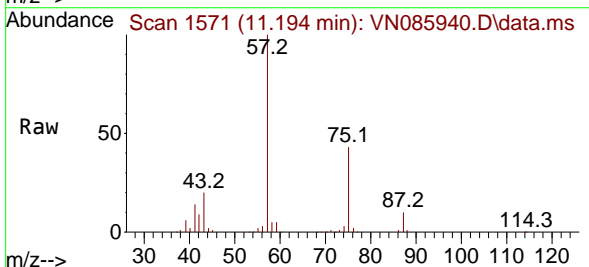


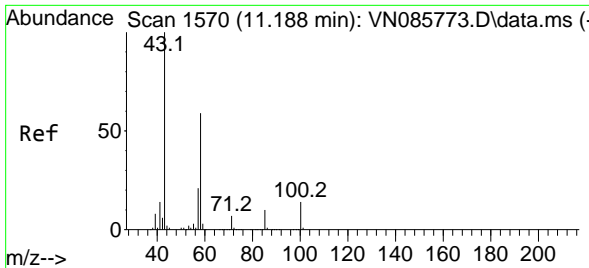
Tgt Ion: 69 Resp: 1408
 Ion Ratio Lower Upper
 69 100
 41 2225.6 46.0 69.0#
 39 982.0 22.0 33.0#



#57
 1,3-Dichloropropane
 Concen: 1.041 ug/l
 RT: 11.194 min Scan# 1571
 Delta R.T. 0.035 min
 Lab File: VN085940.D
 Acq: 11 Mar 2025 18:40

Tgt Ion: 76 Resp: 3592
 Ion Ratio Lower Upper
 76 100
 78 0.0 25.9 38.9#

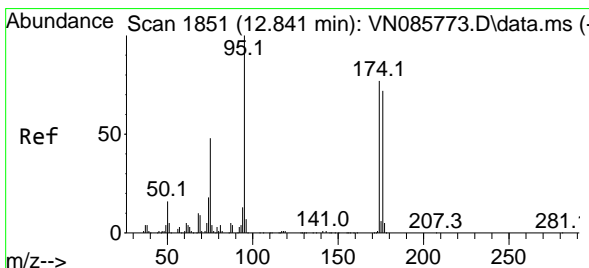
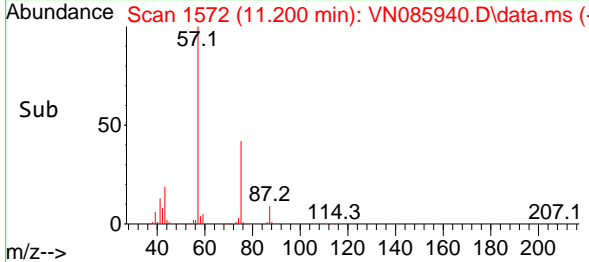
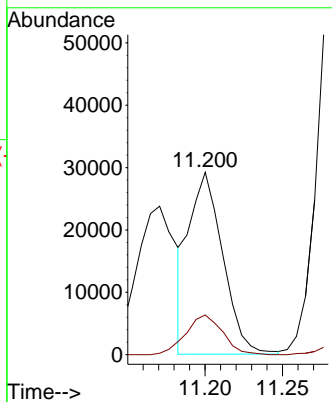
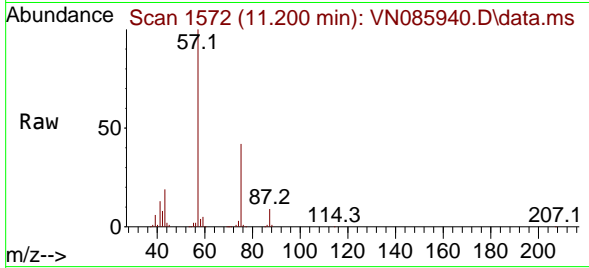




#59
 2-Hexanone
 Concen: 29.264 ug/l
 RT: 11.200 min Scan# 11
 Delta R.T. 0.012 min
 Lab File: VN085940.D
 Acq: 11 Mar 2025 18:40

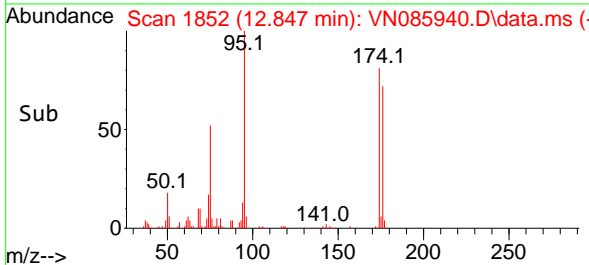
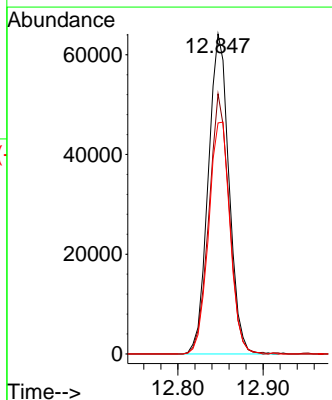
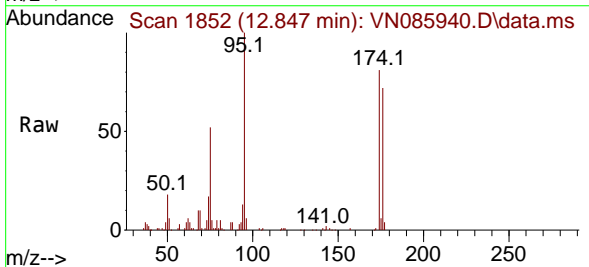
Instrument :
 MSVOA_N
 ClientSampleId :

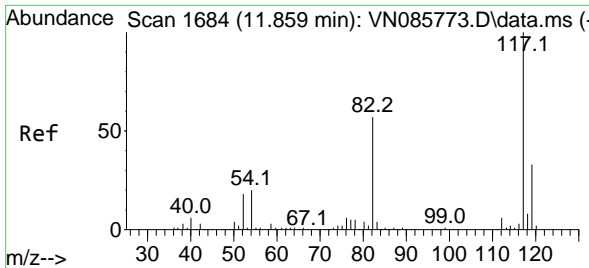
Tgt Ion: 43 Resp: 44206
 Ion Ratio Lower Upper
 43 100
 58 23.8 29.8 89.5#



#62
 4-Bromofluorobenzene
 Concen: 46.357 ug/l
 RT: 12.847 min Scan# 1852
 Delta R.T. 0.006 min
 Lab File: VN085940.D
 Acq: 11 Mar 2025 18:40

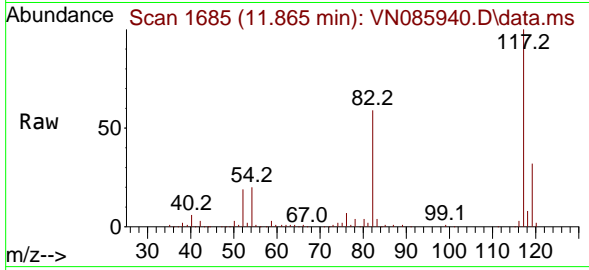
Tgt Ion: 95 Resp: 108665
 Ion Ratio Lower Upper
 95 100
 174 79.7 0.0 152.4
 176 74.9 0.0 146.6





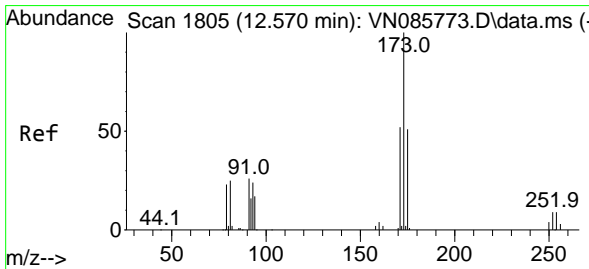
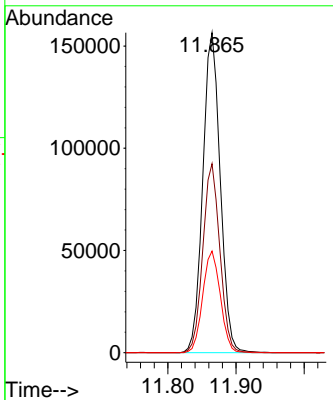
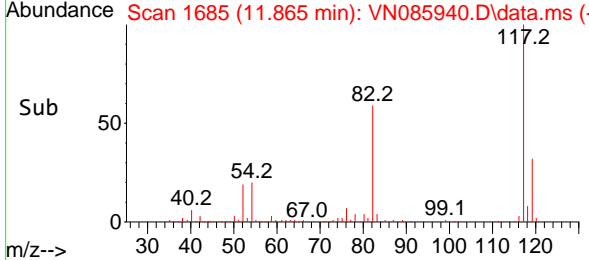
#63
 Chlorobenzene-d5
 Concen: 50.000 ug/l
 RT: 11.865 min Scan# 117
 Delta R.T. 0.006 min
 Lab File: VN085940.D
 Acq: 11 Mar 2025 18:40

Instrument : MSVOA_N
 ClientSampleId :

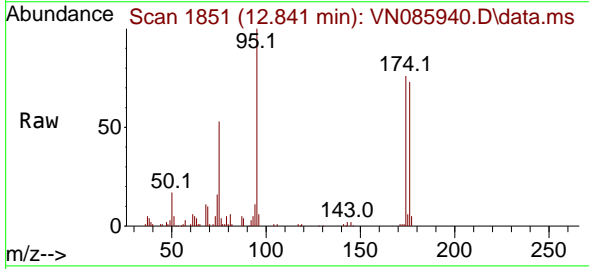


Tgt Ion:117 Resp: 278612

Ion	Ratio	Lower	Upper
117	100		
82	59.1	45.7	68.5
119	31.7	26.2	39.2

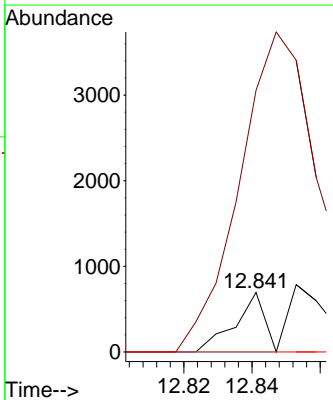
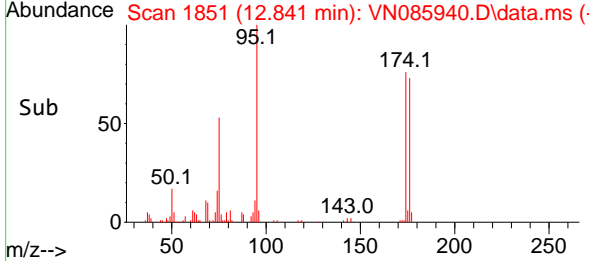


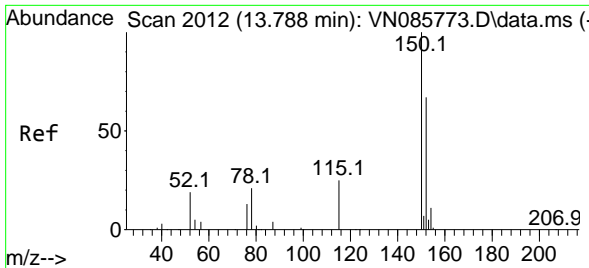
#71
 Bromoform
 Concen: 0.247 ug/l
 RT: 12.841 min Scan# 1851
 Delta R.T. 0.271 min
 Lab File: VN085940.D
 Acq: 11 Mar 2025 18:40



Tgt Ion:173 Resp: 421

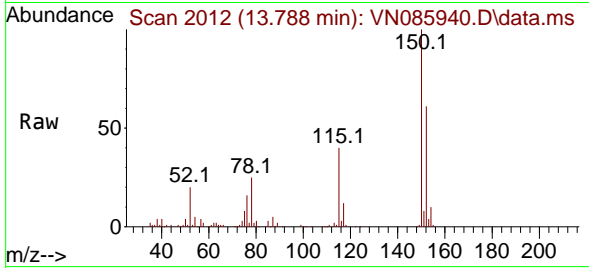
Ion	Ratio	Lower	Upper
173	100		
175	0.0	25.1	75.4#
254	0.0	0.0	0.0





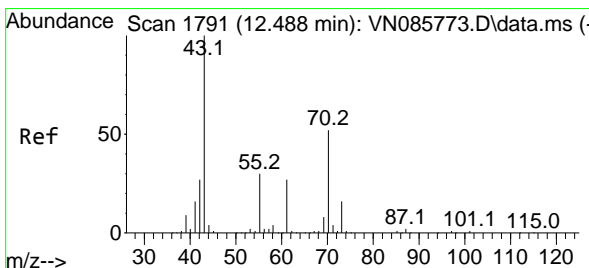
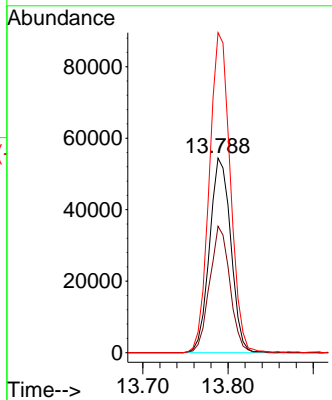
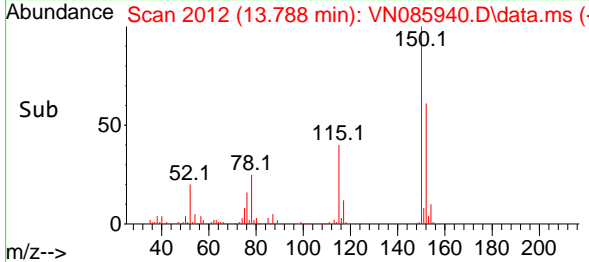
#72
 1,4-Dichlorobenzene-d4
 Concen: 50.000 ug/l
 RT: 13.788 min Scan# 20
 Delta R.T. 0.000 min
 Lab File: VN085940.D
 Acq: 11 Mar 2025 18:40

Instrument :
 MSVOA_N
 ClientSampleId :

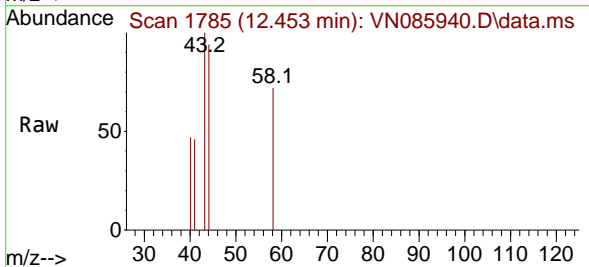


Tgt Ion:152 Resp: 94621

Ion	Ratio	Lower	Upper
152	100		
115	62.1	30.4	91.3
150	162.2	0.0	345.4

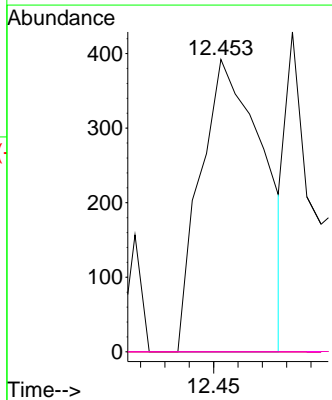
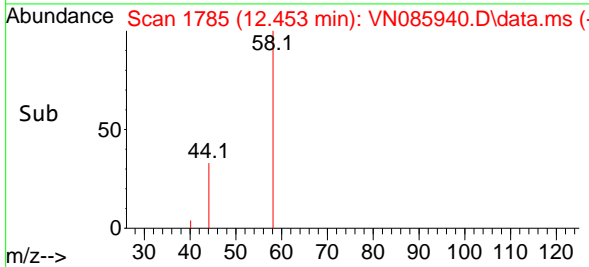


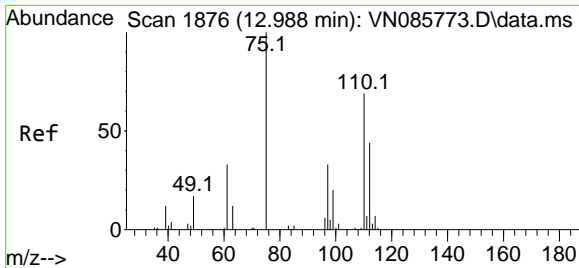
#74
 N-amy1 acetate
 Concen: 0.310 ug/l
 RT: 12.453 min Scan# 1785
 Delta R.T. -0.035 min
 Lab File: VN085940.D
 Acq: 11 Mar 2025 18:40



Tgt Ion: 43 Resp: 709

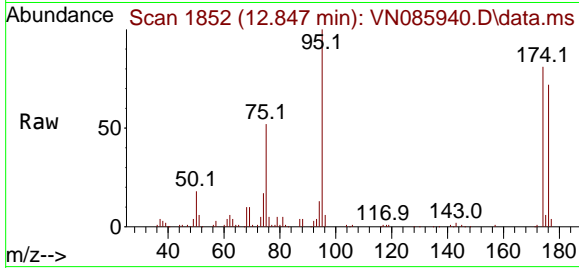
Ion	Ratio	Lower	Upper
43	100		
70	0.0	41.0	61.4#
55	0.0	24.6	36.8#
61	0.0	21.6	32.4#



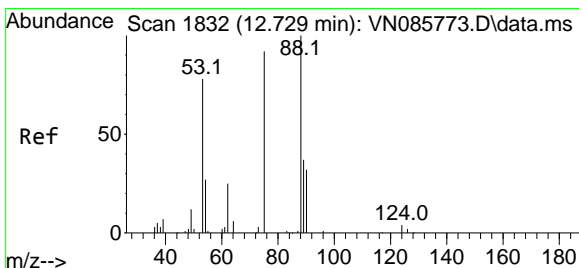
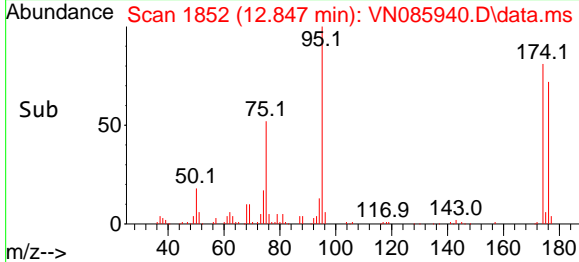
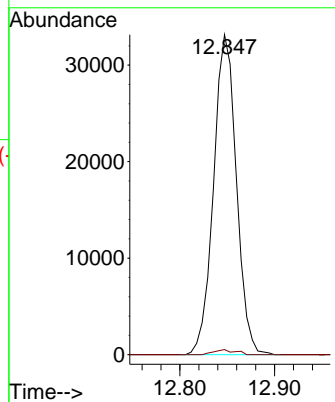


#76
 1,2,3-Trichloropropane
 Concen: 26.416 ug/l
 RT: 12.847 min Scan# 1852
 Delta R.T. -0.141 min
 Lab File: VN085940.D
 Acq: 11 Mar 2025 18:40

Instrument : MSVOA_N
 ClientSampleId :



Tgt Ion: 75 Resp: 55523
 Ion Ratio Lower Upper
 75 100
 77 1.5 100.0 300.0#



#81
 trans-1,4-Dichloro-2-butene
 Concen: 77.076 ug/l
 RT: 12.847 min Scan# 1852
 Delta R.T. 0.118 min
 Lab File: VN085940.D
 Acq: 11 Mar 2025 18:40

Tgt Ion: 75 Resp: 55523
 Ion Ratio Lower Upper
 75 100
 53 0.3 74.2 111.4#
 89 0.0 34.9 52.3#

