

Data Path : Z:\voasrv\HPCHEM1\MSVOA_N\Data\VN031221\
 Data File : VN066193.D
 Acq On : 12 Mar 2021 19:43
 Operator : JC/MD
 Sample : M1647-21
 Misc : 5.00mL/MSVOA_N/WATER
 ALS Vial : 20 Sample Multiplier: 1

Instrument :
 MSVOA_N
 ClientSampled :

Quant Time: Mar 13 02:44:07 2021
 Quant Method : Z:\voasrv\HPCHEM1\MSVOA_N\methods\82N031221W.M
 Quant Title : SW846 8260
 QLast Update : Fri Mar 12 13:00:23 2021
 Response via : Initial Calibration

Compound	R.T.	QIon	Response	Conc	Units	Dev(Min)
Internal Standards						
1) Pentafluorobenzene	7.587	168	465492	50.00	ug/l	0.00
34) 1,4-Difluorobenzene	8.515	114	724244	50.00	ug/l	0.00
63) Chlorobenzene-d5	11.347	117	622968	50.00	ug/l	0.00
72) 1,4-Dichlorobenzene-d4	13.286	152	261988	50.00	ug/l	0.00
System Monitoring Compounds						
33) 1,2-Dichloroethane-d4	7.949	65	339508	45.20	ug/l	0.00
Spiked Amount	50.000	Range 61 - 141	Recovery =	90.40%		
35) Dibromofluoromethane	7.509	113	232020	47.48	ug/l	0.00
Spiked Amount	50.000	Range 69 - 133	Recovery =	94.96%		
50) Toluene-d8	10.028	98	882910	44.61	ug/l	0.00
Spiked Amount	50.000	Range 65 - 126	Recovery =	89.22%		
62) 4-Bromofluorobenzene	12.345	95	289765	39.80	ug/l	0.00
Spiked Amount	50.000	Range 58 - 135	Recovery =	79.60%		
Target Compounds						
						Qvalue
3) Chloromethane	2.022	50	5158	0.27	ug/l	94
4) Vinyl Chloride	2.143	62	1434	0.21	ug/l #	76
11) Tert butyl alcohol	4.699	59	20389	17.69	ug/l #	84
13) Acrolein	3.535	56	9333	Below Cal		91
16) Acetone	3.739	43	156050	42.19	ug/l	99
18) Methyl Acetate	4.235	43	47960	5.18	ug/l	99
25) 2-Butanone	6.748	43	26280	4.64	ug/l	95
31) Cyclohexane	7.584	56	11103	1.01	ug/l #	1
36) 1,1-Dichloropropene	7.590	75	36533	4.77	ug/l #	50
37) Ethyl Acetate	6.748	43	26280	2.46	ug/l #	74
38) Carbon Tetrachloride	7.587	117	43071	6.03	ug/l #	18
40) Benzene	7.965	78	1380059	59.60	ug/l	99
42) 1,2-Dichloroethane	7.960	62	11715	1.32	ug/l	83
48) Methyl methacrylate	9.097	41	11277	1.33	ug/l #	34
49) 1,4-Dioxane	9.132	88	5767	63.44	ug/l #	16
51) 4-Methyl-2-Pentanone	9.923	43	7322	0.67	ug/l	99
52) Toluene	10.092	92	915921	65.69	ug/l	100
53) t-1,3-Dichloropropene	10.092	75	11125	1.15	ug/l #	1
55) 1,1,2-Trichloroethane	10.352	97	26744	4.67	ug/l #	15
56) Ethyl methacrylate	10.350	69	2151	2.26	ug/l #	17
58) 2-Chloroethyl Vinyl ether	9.642	63	2428	17.86	ug/l #	54
59) 2-Hexanone	10.696	43	1725	Below Cal		85
67) Ethyl Benzene	11.455	91	191885	8.27	ug/l	100
68) m/p-Xylenes	11.559	106	446237	51.90	ug/l	98
69) o-Xylene	11.892	106	401483	48.08	ug/l	98
70) Styrene	11.905	104	153016	12.05	ug/l #	66
73) Isopropylbenzene	12.189	105	7072	0.36	ug/l	92
74) N-amyl acetate	11.945	43	14825	6.02	ug/l #	1
76) 1,2,3-Trichloropropane	12.345	75	151843	24.59	ug/l #	100
78) n-propylbenzene	12.535	91	27138	1.19	ug/l	91
79) 2-Chlorotoluene	12.597	91	11223	0.79	ug/l #	42
80) 1,3,5-Trimethylbenzene	12.678	105	93946	5.70	ug/l	98
81) trans-1,4-Dichloro-2-b...	12.345	75	151843	64.77	ug/l #	11
82) 4-Chlorotoluene	12.680	91	9445	0.67	ug/l #	43
83) tert-Butylbenzene	12.983	119	44566	3.21	ug/l #	71
84) 1,2,4-Trimethylbenzene	12.983	105	364117	22.30	ug/l	100

Data Path : Z:\voasrv\HPCHEM1\MSVOA_N\Data\VN031221\
 Data File : VN066193.D
 Acq On : 12 Mar 2021 19:43
 Operator : JC/MD
 Sample : M1647-21
 Misc : 5.00mL/MSVOA_N/WATER
 ALS Vial : 20 Sample Multiplier: 1

Instrument :
 MSVOA_N
 ClientSampleId :

Quant Time: Mar 13 02:44:07 2021
 Quant Method : Z:\voasrv\HPCHEM1\MSVOA_N\methods\82N031221W.M
 Quant Title : SW846 8260
 QLast Update : Fri Mar 12 13:00:23 2021
 Response via : Initial Calibration

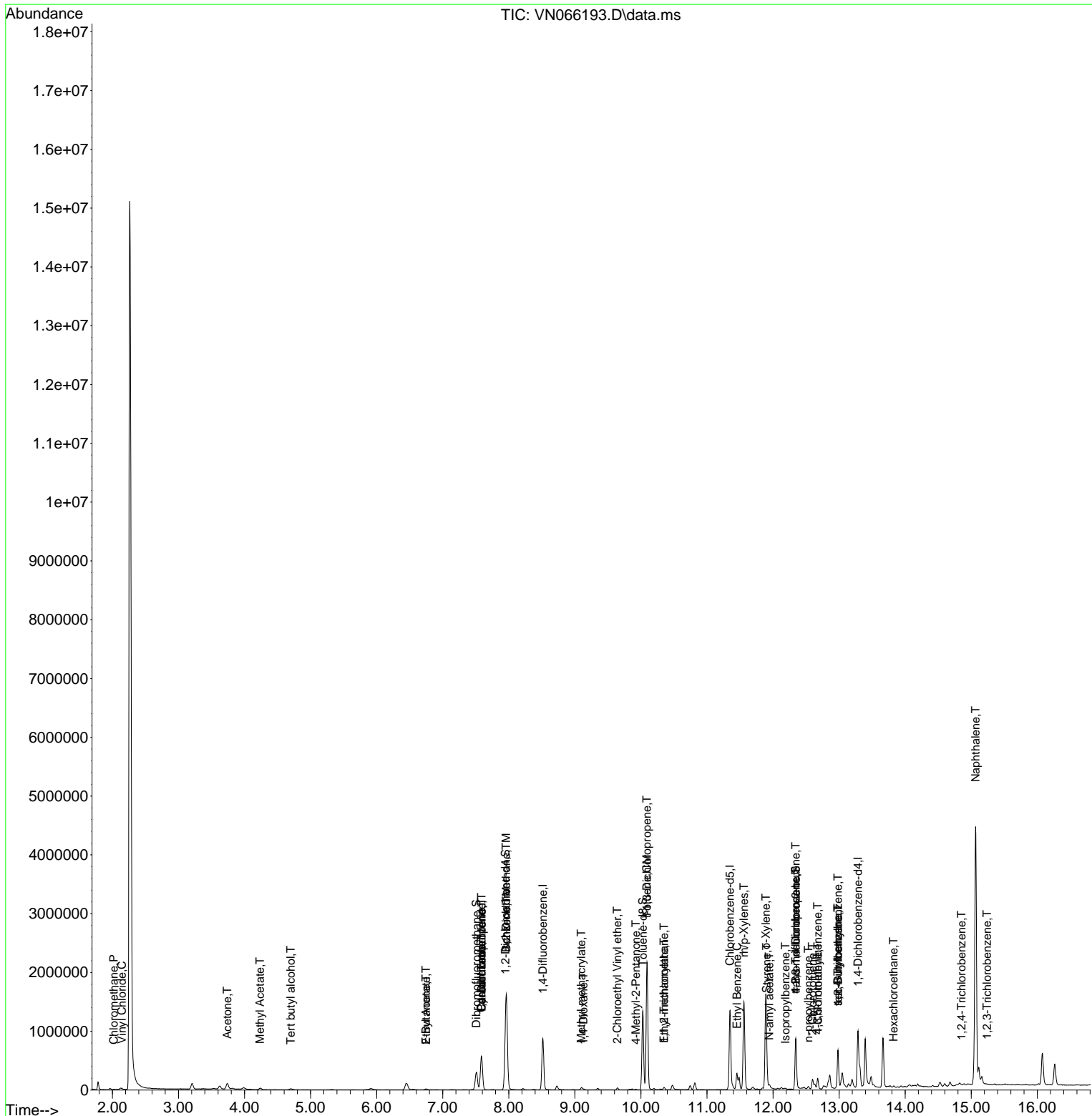
Compound	R.T.	QIon	Response	Conc	Units	Dev(Min)
85) sec-Butylbenzene	12.983	105	364117	19.63	ug/l #	58
90) Hexachloroethane	13.825	117	2194	0.84	ug/l #	7
93) 1,2,4-Trichlorobenzene	14.853	180	817	2.91	ug/l #	66
95) Naphthalene	15.067	128	3587210	214.62	ug/l	99
96) 1,2,3-Trichlorobenzene	15.242	180	534	1.99	ug/l #	29

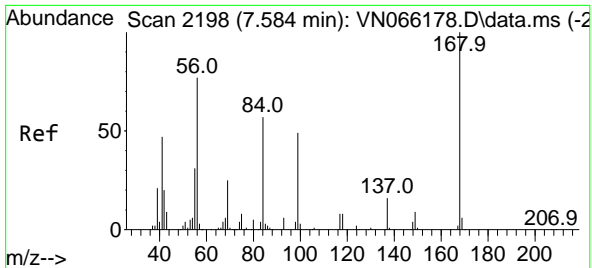
(#) = qualifier out of range (m) = manual integration (+) = signals summed

Data Path : Z:\voasrv\HPCHEM1\MSVOA_N\Data\VN031221\
 Data File : VN066193.D
 Acq On : 12 Mar 2021 19:43
 Operator : JC/MD
 Sample : M1647-21
 Misc : 5.00mL/MSVOA_N/WATER
 ALS Vial : 20 Sample Multiplier: 1

Instrument :
 MSVOA_N
 Client Sampled :

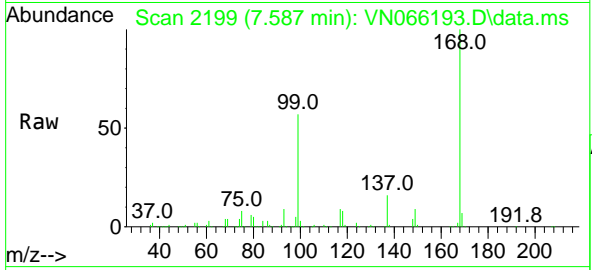
Quant Time: Mar 13 02:44:07 2021
 Quant Method : Z:\voasrv\HPCHEM1\MSVOA_N\methods\82N031221W.M
 Quant Title : SW846 8260
 QLast Update : Fri Mar 12 13:00:23 2021
 Response via : Initial Calibration



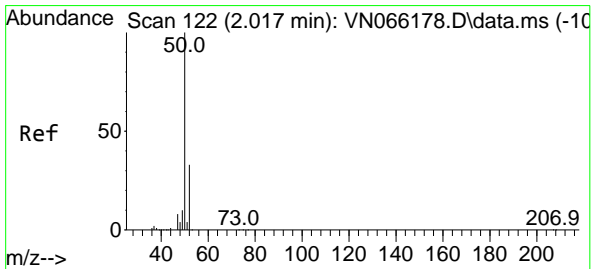
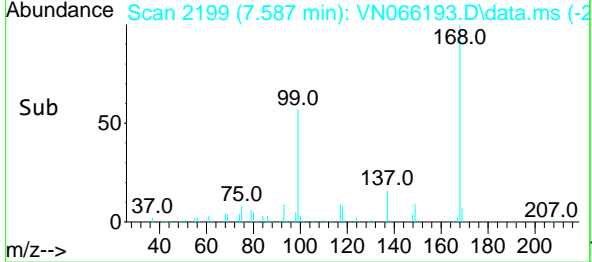
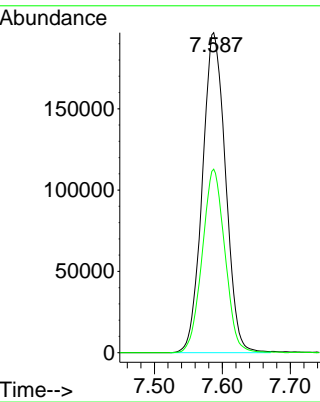


#1
 Pentafluorobenzene
 Concen: 50.00 ug/l
 RT: 7.587 min Scan# 2199
 Delta R.T. -0.003 min
 Lab File: VN066193.D
 Acq: 12 Mar 2021 19:43

Instrument :
 MSVOA_N
 ClientSampled :

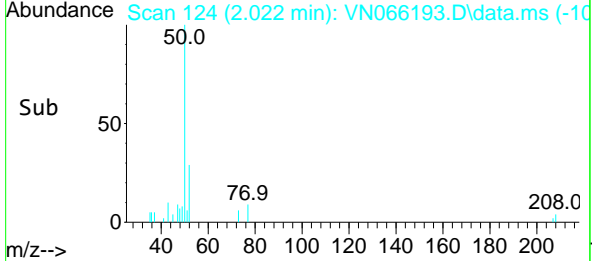
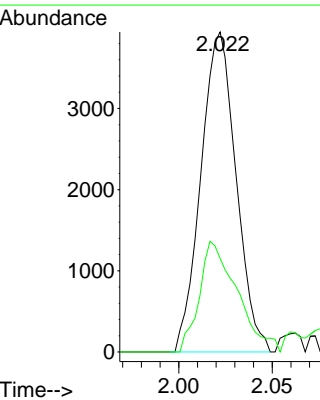
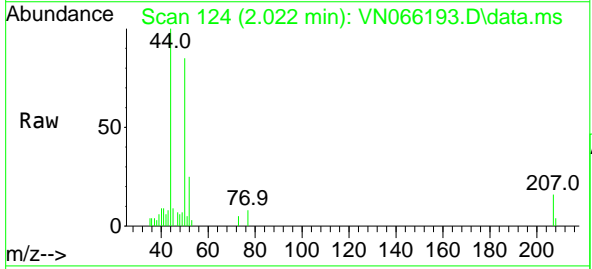


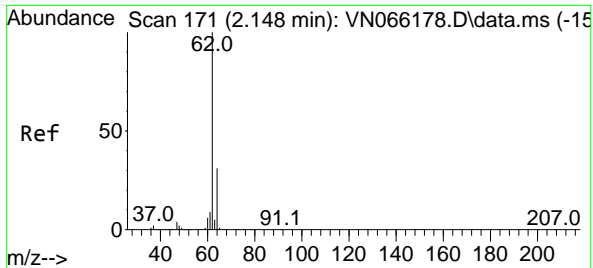
Tgt Ion:168 Resp: 465492
 Ion Ratio Lower Upper
 168 100
 99 57.4 45.4 68.0



#3
 Chloromethane
 Concen: 0.27 ug/l
 RT: 2.022 min Scan# 124
 Delta R.T. 0.005 min
 Lab File: VN066193.D
 Acq: 12 Mar 2021 19:43

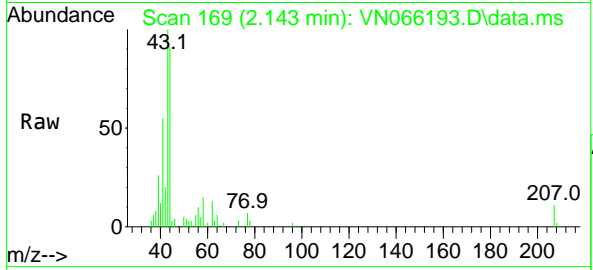
Tgt Ion: 50 Resp: 5158
 Ion Ratio Lower Upper
 50 100
 52 29.3 26.2 39.4



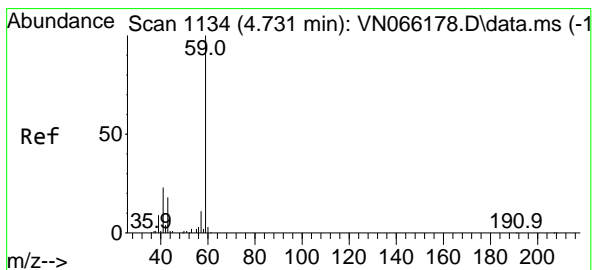
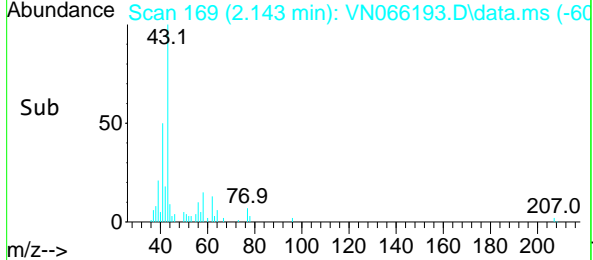
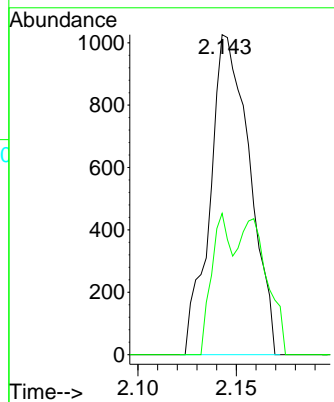


#4
 Vinyl Chloride
 Concen: 0.21 ug/l
 RT: 2.143 min Scan# 169
 Delta R.T. -0.008 min
 Lab File: VN066193.D
 Acq: 12 Mar 2021 19:43

Instrument :
 MSVOA_N
 ClientSampled :

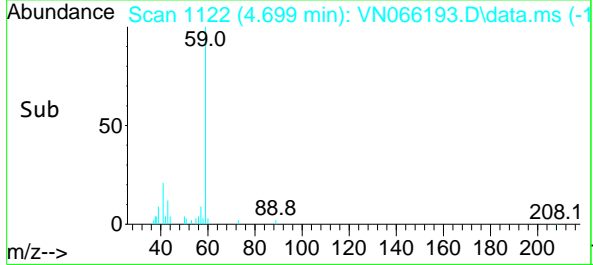
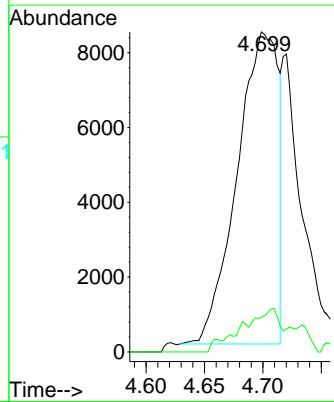
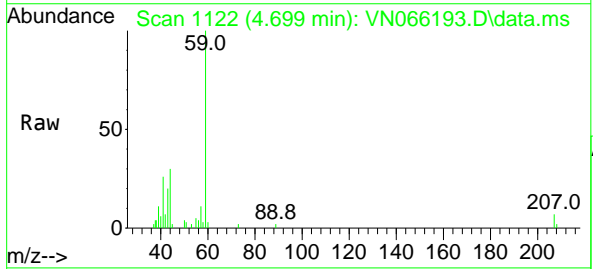


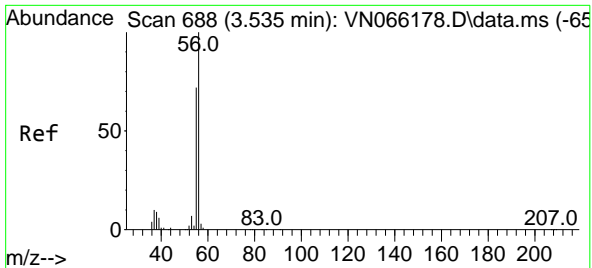
Tgt Ion: 62 Resp: 1434
 Ion Ratio Lower Upper
 62 100
 64 44.2 24.9 37.3#



#11
 Tert butyl alcohol
 Concen: 17.69 ug/l
 RT: 4.699 min Scan# 1122
 Delta R.T. -0.024 min
 Lab File: VN066193.D
 Acq: 12 Mar 2021 19:43

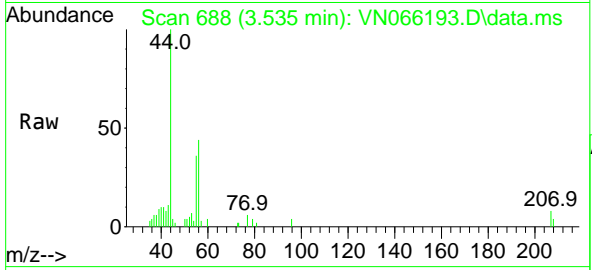
Tgt Ion: 59 Resp: 20389
 Ion Ratio Lower Upper
 59 100
 57 4.1 8.0 12.0#



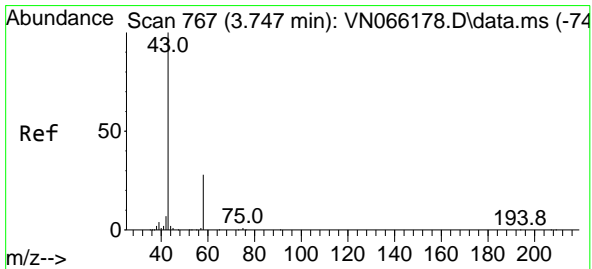
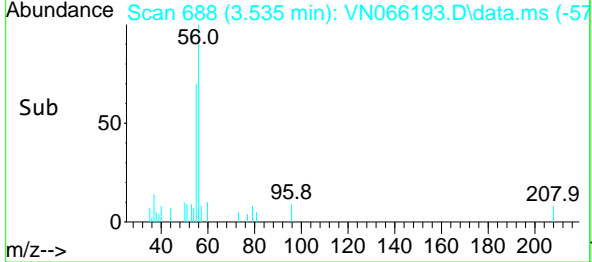
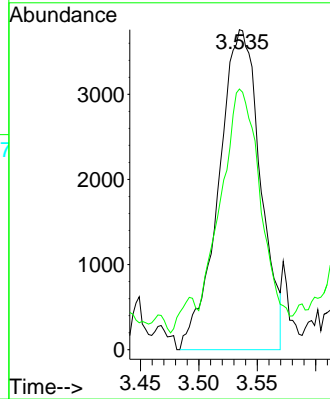


#13
 Acrolein
 Concen: Below Cal
 RT: 3.535 min Scan# 688
 Delta R.T. -0.002 min
 Lab File: VN066193.D
 Acq: 12 Mar 2021 19:43

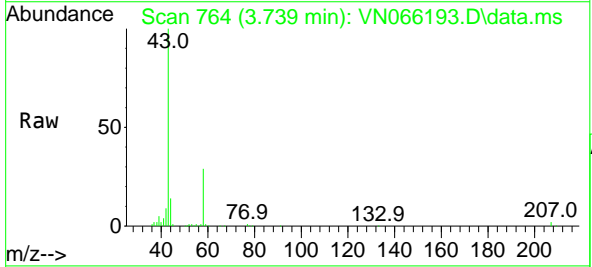
Instrument :
 MSVOA_N
 ClientSampled :



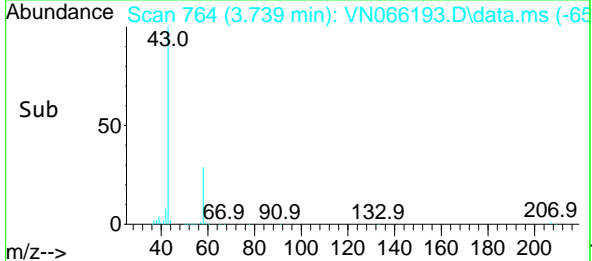
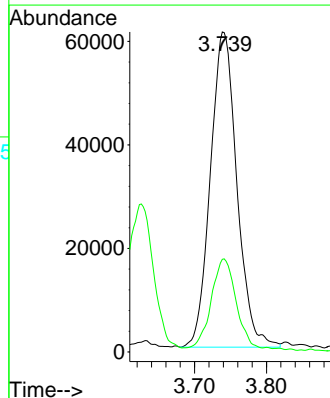
Tgt Ion: 56 Resp: 9333
 Ion Ratio Lower Upper
 56 100
 55 65.3 58.0 87.0

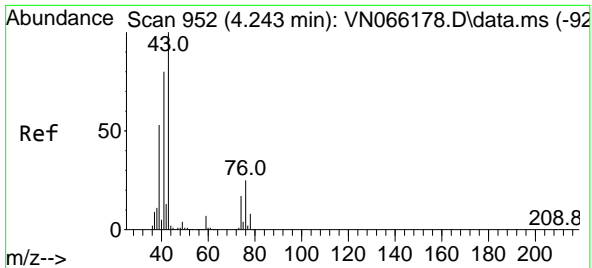


#16
 Acetone
 Concen: 42.19 ug/l
 RT: 3.739 min Scan# 764
 Delta R.T. -0.010 min
 Lab File: VN066193.D
 Acq: 12 Mar 2021 19:43



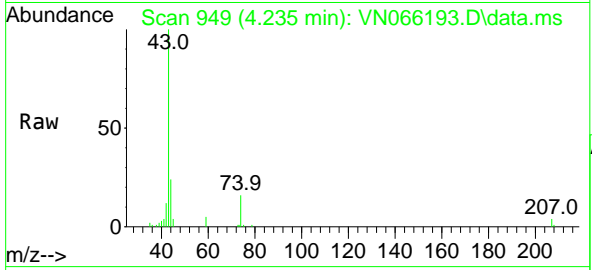
Tgt Ion: 43 Resp: 156050
 Ion Ratio Lower Upper
 43 100
 58 28.3 22.3 33.5



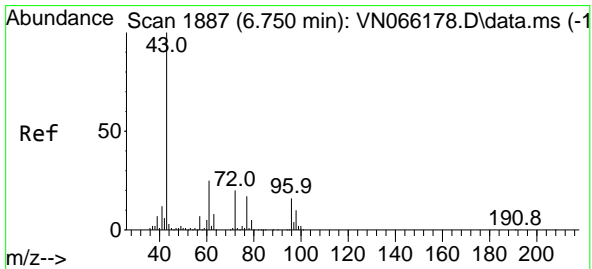
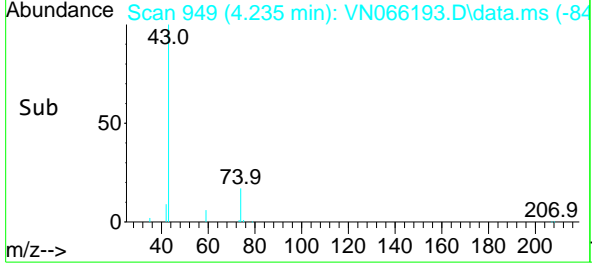
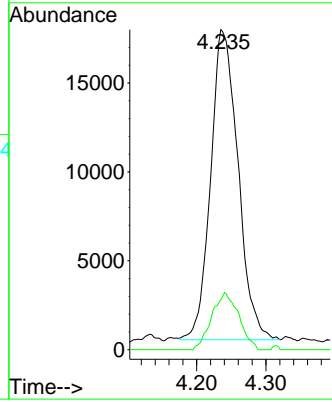


#18
 Methyl Acetate
 Concen: 5.18 ug/l
 RT: 4.235 min Scan# 949
 Delta R.T. -0.008 min
 Lab File: VN066193.D
 Acq: 12 Mar 2021 19:43

Instrument :
 MSVOA_N
 ClientSampled :

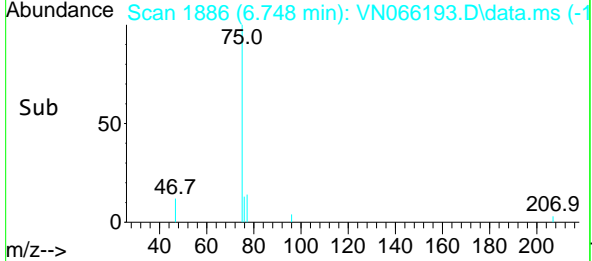
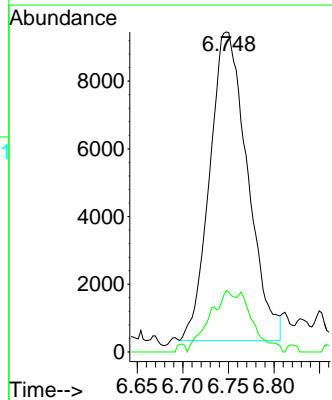
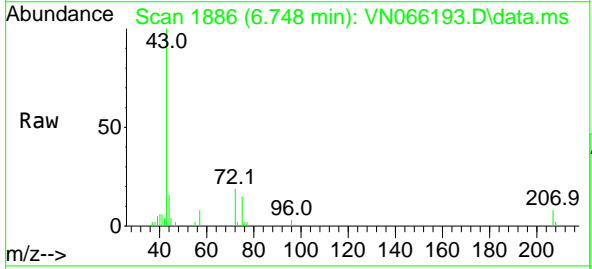


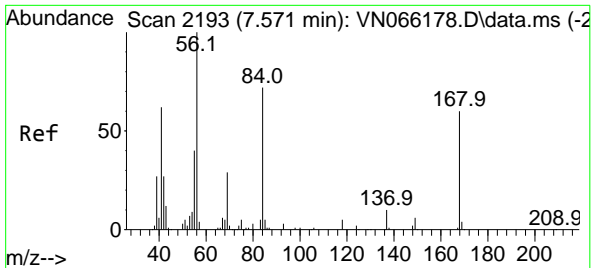
Tgt Ion: 43 Resp: 47960
 Ion Ratio Lower Upper
 43 100
 74 18.2 14.2 21.2



#25
 2-Butanone
 Concen: 4.64 ug/l
 RT: 6.748 min Scan# 1886
 Delta R.T. -0.002 min
 Lab File: VN066193.D
 Acq: 12 Mar 2021 19:43

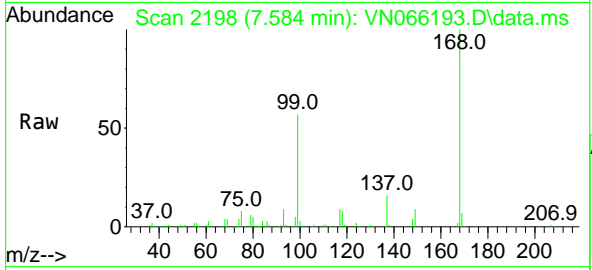
Tgt Ion: 43 Resp: 26280
 Ion Ratio Lower Upper
 43 100
 72 18.0 16.2 24.2





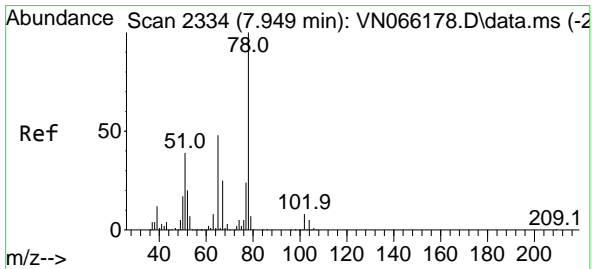
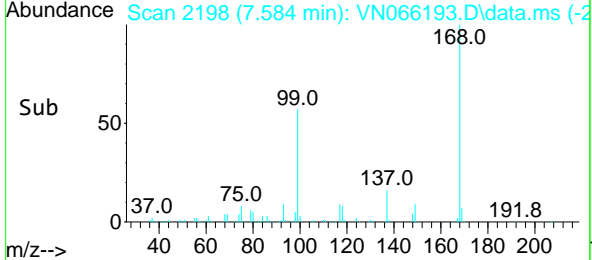
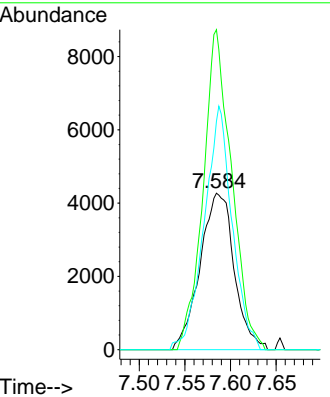
#31
 Cyclohexane
 Concen: 1.01 ug/l
 RT: 7.584 min Scan# 2198
 Delta R.T. 0.008 min
 Lab File: VN066193.D
 Acq: 12 Mar 2021 19:43

Instrument :
 MSVOA_N
 ClientSampled :

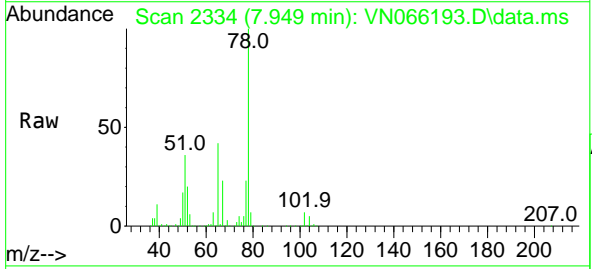


Tgt Ion: 56 Resp: 11103

Ion	Ratio	Lower	Upper
56	100		
69	204.6	23.4	35.0#
84	146.0	57.8	86.6#

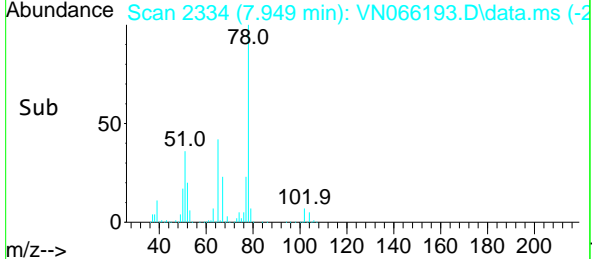
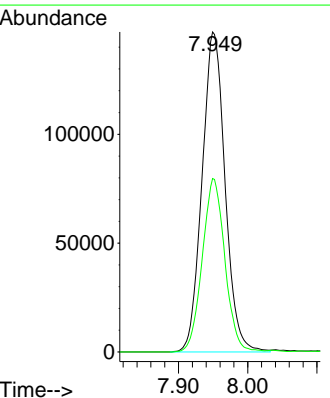


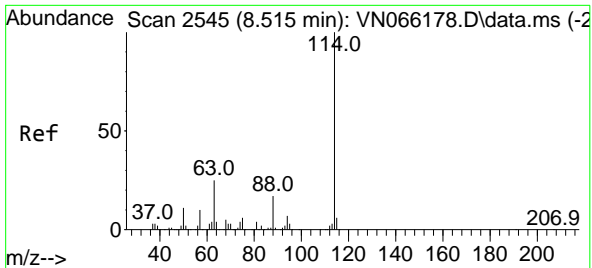
#33
 1,2-Dichloroethane-d4
 Concen: 45.20 ug/l
 RT: 7.949 min Scan# 2334
 Delta R.T. -0.003 min
 Lab File: VN066193.D
 Acq: 12 Mar 2021 19:43



Tgt Ion: 65 Resp: 339508

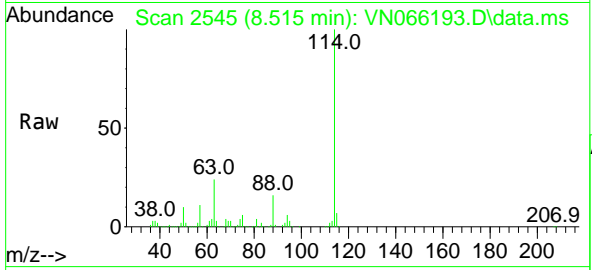
Ion	Ratio	Lower	Upper
65	100		
67	53.2	0.0	107.2





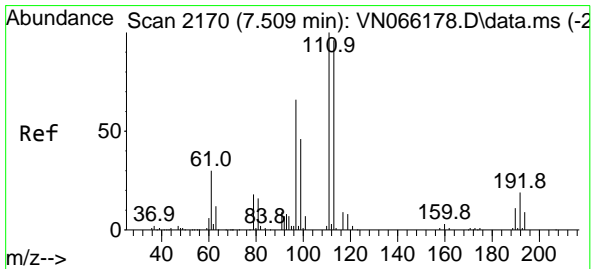
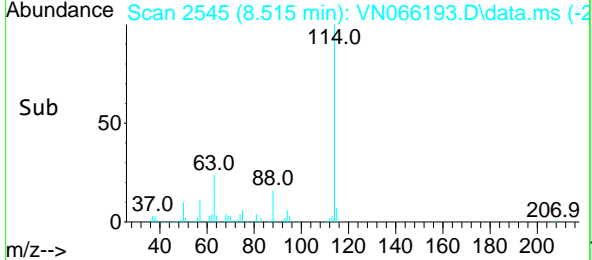
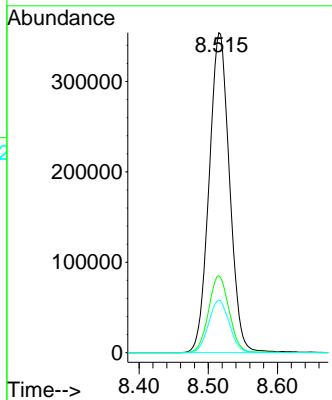
#34
 1,4-Difluorobenzene
 Concen: 50.00 ug/l
 RT: 8.515 min Scan# 2545
 Delta R.T. -0.003 min
 Lab File: VN066193.D
 Acq: 12 Mar 2021 19:43

Instrument :
 MSVOA_N
 ClientSampled :

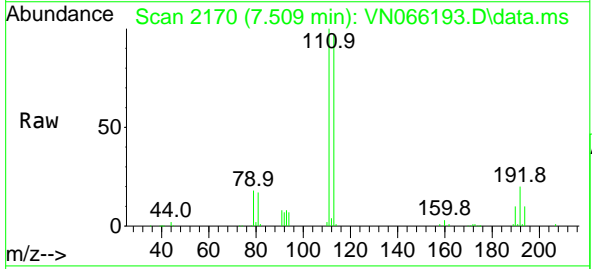


Tgt Ion:114 Resp: 724244

Ion	Ratio	Lower	Upper
114	100		
63	24.1	0.0	49.2
88	16.5	0.0	33.8

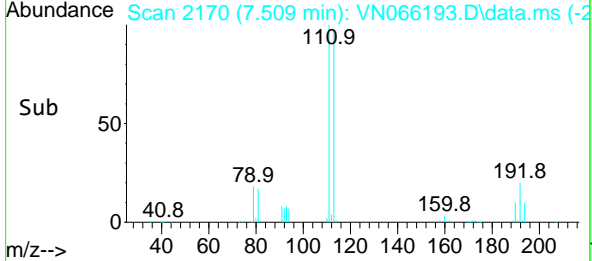
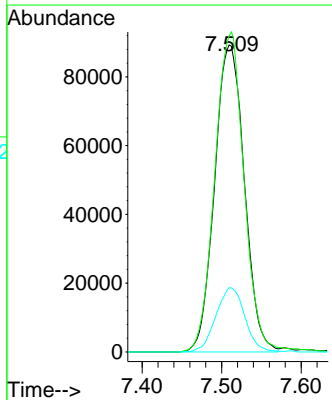


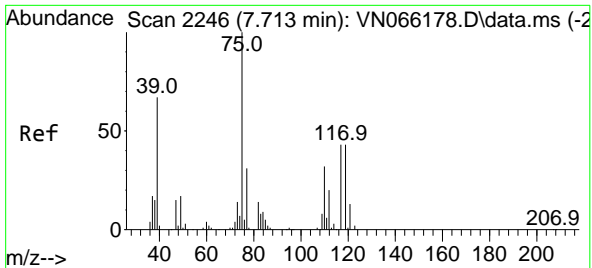
#35
 Dibromofluoromethane
 Concen: 47.48 ug/l
 RT: 7.509 min Scan# 2170
 Delta R.T. 0.000 min
 Lab File: VN066193.D
 Acq: 12 Mar 2021 19:43



Tgt Ion:113 Resp: 232020

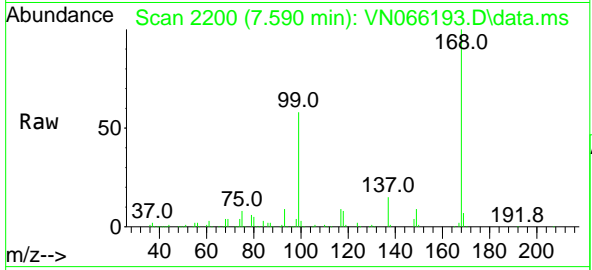
Ion	Ratio	Lower	Upper
113	100		
111	102.3	84.0	126.0
192	20.4	16.7	25.1





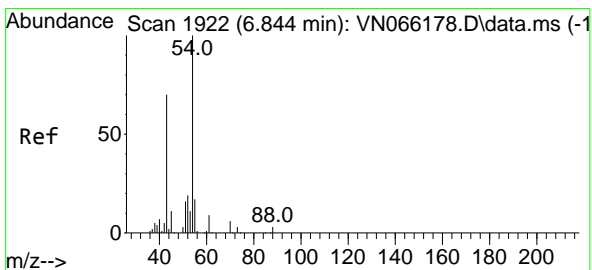
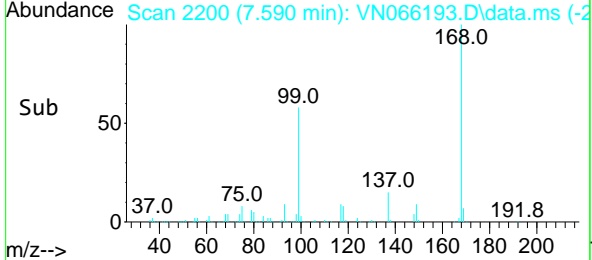
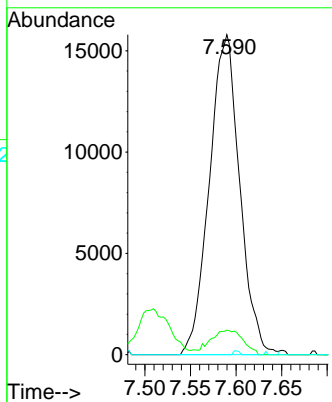
#36
 1,1-Dichloropropene
 Concen: 4.77 ug/l
 RT: 7.590 min Scan# 2200
 Delta R.T. -0.126 min
 Lab File: VN066193.D
 Acq: 12 Mar 2021 19:43

Instrument :
 MSVOA_N
 ClientSampled :

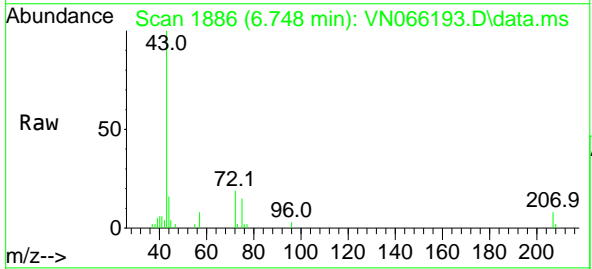


Tgt Ion: 75 Resp: 36533

Ion	Ratio	Lower	Upper
75	100		
110	8.1	16.0	48.0#
77	0.0	24.9	37.3#

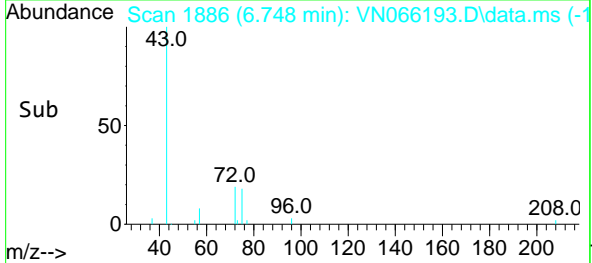
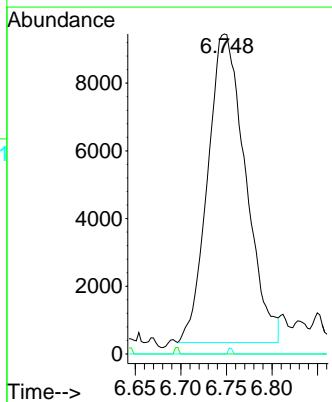


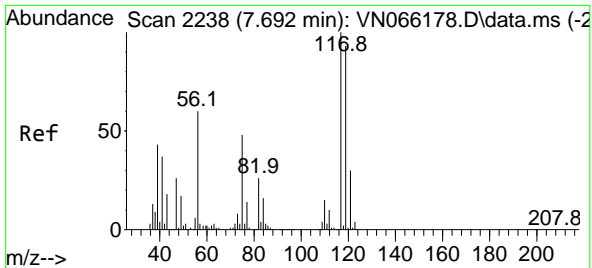
#37
 Ethyl Acetate
 Concen: 2.46 ug/l
 RT: 6.748 min Scan# 1886
 Delta R.T. -0.096 min
 Lab File: VN066193.D
 Acq: 12 Mar 2021 19:43



Tgt Ion: 43 Resp: 26280

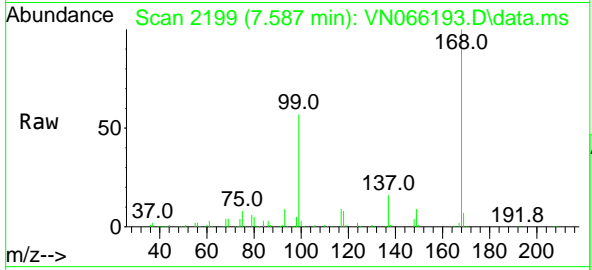
Ion	Ratio	Lower	Upper
43	100		
61	0.0	9.2	13.8#
70	0.2	6.1	9.1#



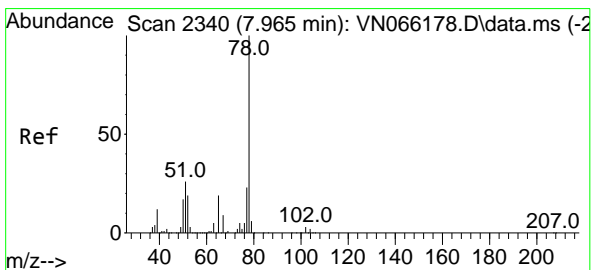
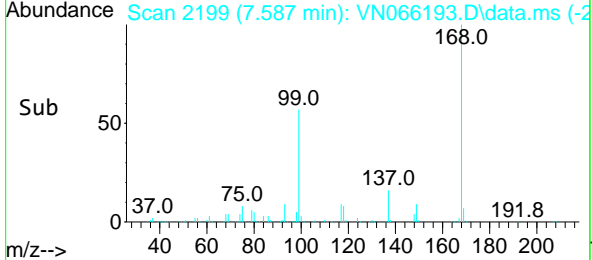
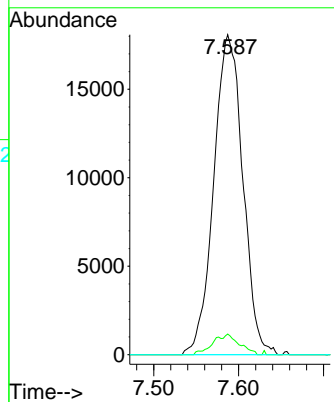


#38
 Carbon Tetrachloride
 Concen: 6.03 ug/l
 RT: 7.587 min Scan# 2199
 Delta R.T. -0.110 min
 Lab File: VN066193.D
 Acq: 12 Mar 2021 19:43

Instrument :
 MSVOA_N
 ClientSampled :

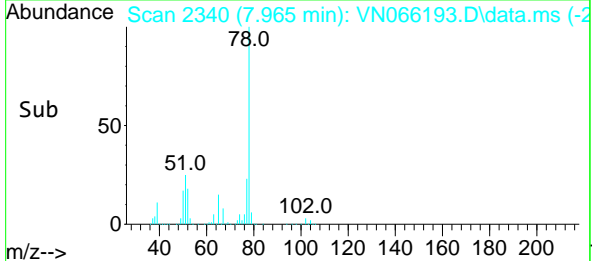
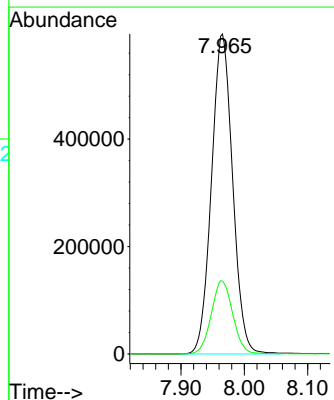
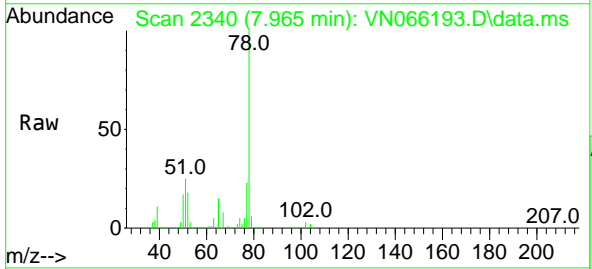


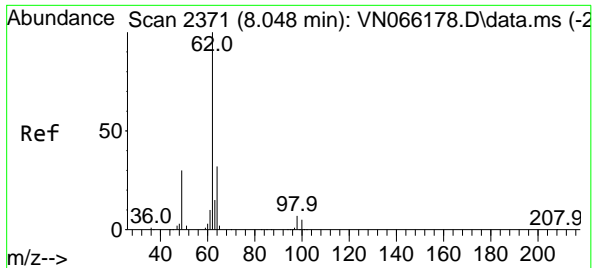
Tgt Ion:117 Resp: 43071
 Ion Ratio Lower Upper
 117 100
 119 6.5 74.6 111.8#
 121 0.0 23.9 35.9#



#40
 Benzene
 Concen: 59.60 ug/l
 RT: 7.965 min Scan# 2340
 Delta R.T. 0.000 min
 Lab File: VN066193.D
 Acq: 12 Mar 2021 19:43

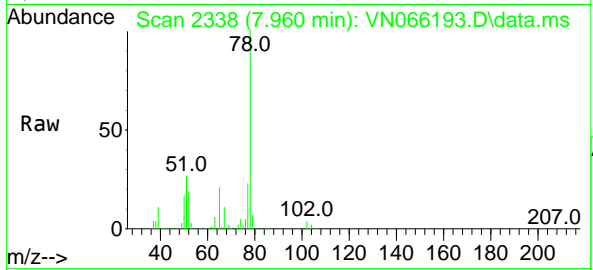
Tgt Ion: 78 Resp: 1380059
 Ion Ratio Lower Upper
 78 100
 77 22.8 18.5 27.7



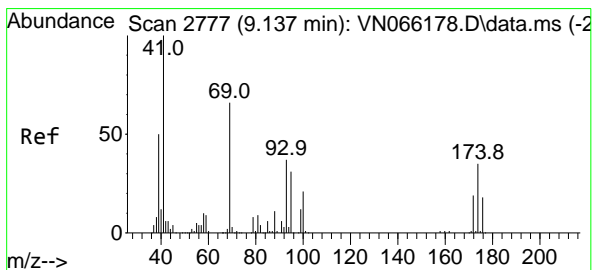
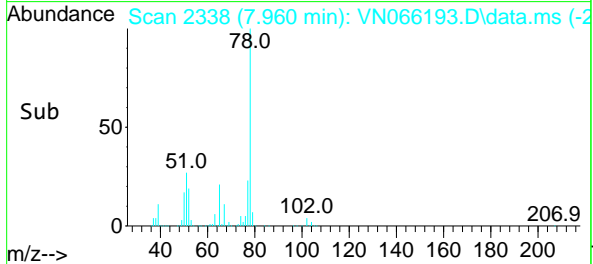
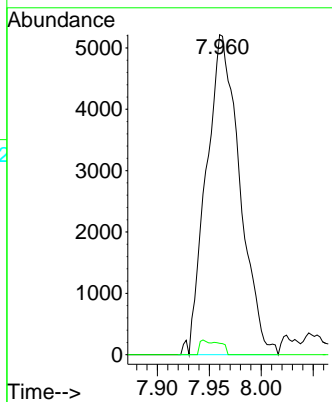


#42
 1,2-Dichloroethane
 Concen: 1.32 ug/l
 RT: 7.960 min Scan# 2338
 Delta R.T. -0.091 min
 Lab File: VN066193.D
 Acq: 12 Mar 2021 19:43

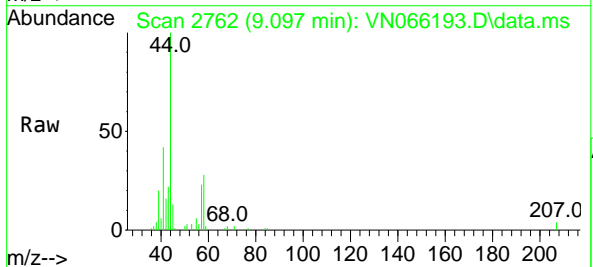
Instrument :
 MSVOA_N
 ClientSampled :



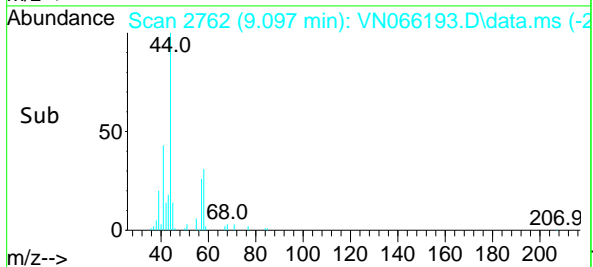
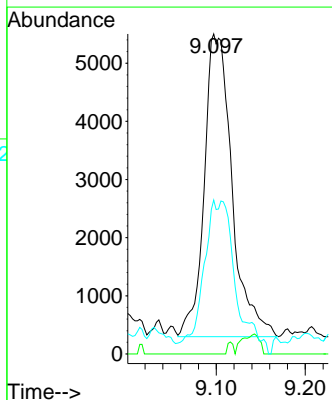
Tgt Ion: 62 Resp: 11715
 Ion Ratio Lower Upper
 62 100
 98 1.5 0.0 14.8

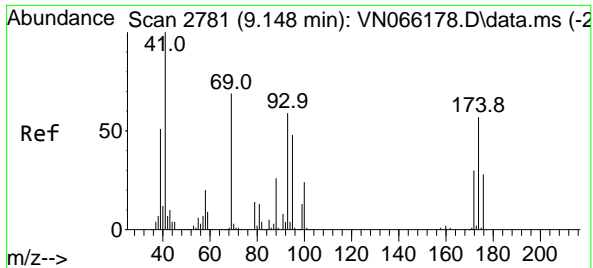


#48
 Methyl methacrylate
 Concen: 1.33 ug/l
 RT: 9.097 min Scan# 2762
 Delta R.T. -0.040 min
 Lab File: VN066193.D
 Acq: 12 Mar 2021 19:43



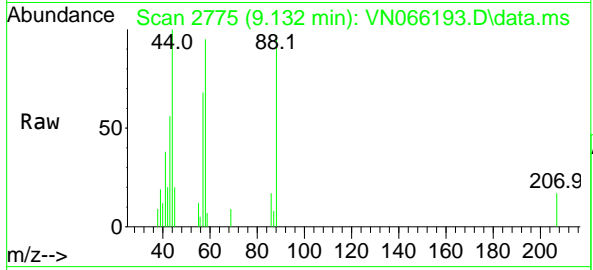
Tgt Ion: 41 Resp: 11277
 Ion Ratio Lower Upper
 41 100
 69 0.8 54.7 82.1#
 39 21.4 40.2 60.2#





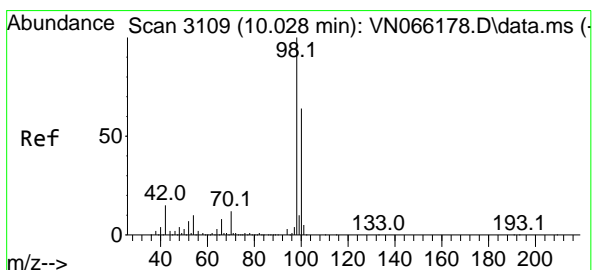
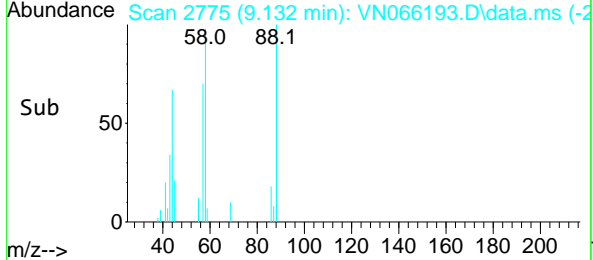
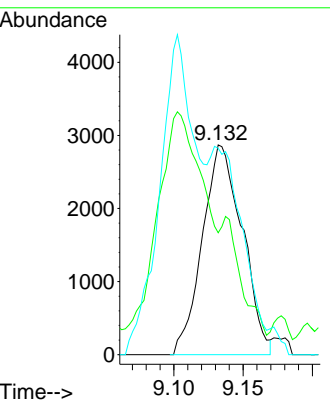
#49
 1,4-Dioxane
 Concen: 63.44 ug/l
 RT: 9.132 min Scan# 2775
 Delta R.T. -0.011 min
 Lab File: VN066193.D
 Acq: 12 Mar 2021 19:43

Instrument :
 MSVOA_N
 ClientSampled :

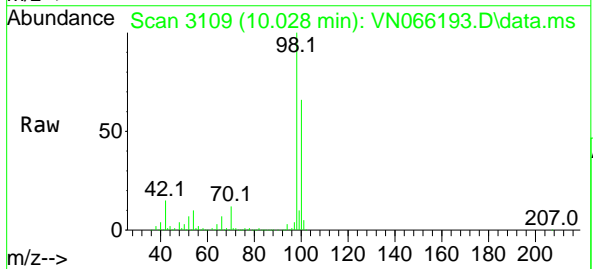


Tgt Ion: 88 Resp: 5767

Ion	Ratio	Lower	Upper
88	100		
43	0.0	34.4	51.6#
58	0.0	67.3	100.9#

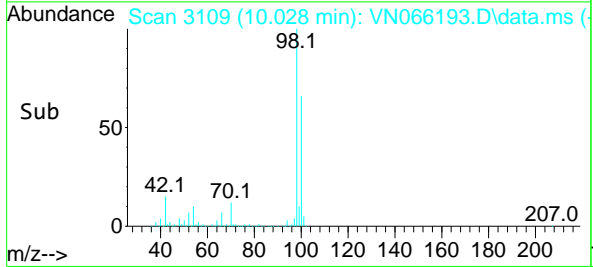
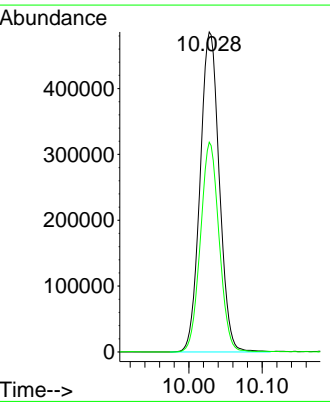


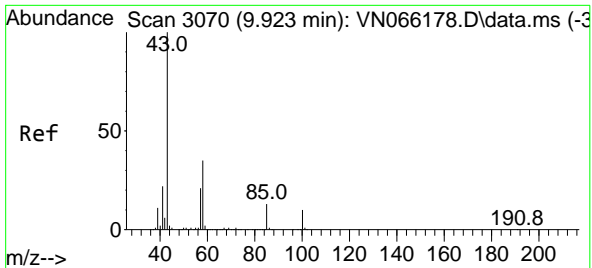
#50
 Toluene-d8
 Concen: 44.61 ug/l
 RT: 10.028 min Scan# 3109
 Delta R.T. -0.002 min
 Lab File: VN066193.D
 Acq: 12 Mar 2021 19:43



Tgt Ion: 98 Resp: 882910

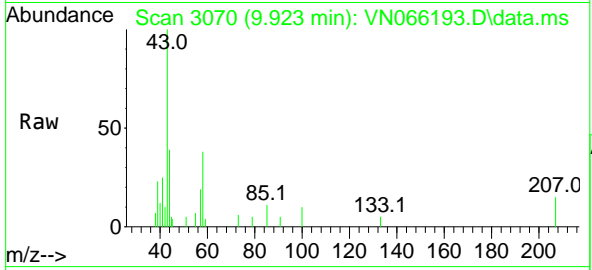
Ion	Ratio	Lower	Upper
98	100		
100	63.8	51.0	76.6



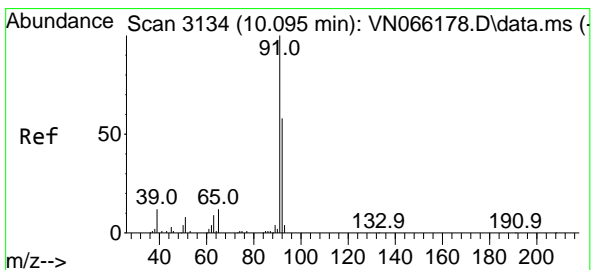
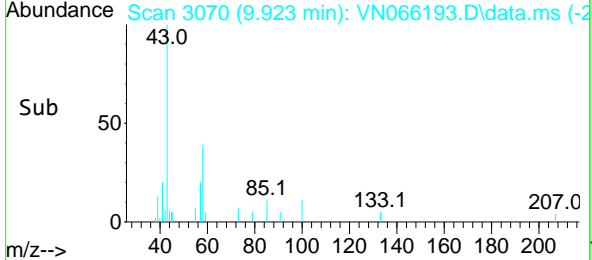
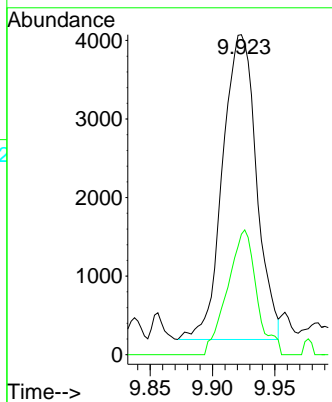


#51
 4-Methyl-2-Pentanone
 Concen: 0.67 ug/l
 RT: 9.923 min Scan# 3070
 Delta R.T. 0.000 min
 Lab File: VN066193.D
 Acq: 12 Mar 2021 19:43

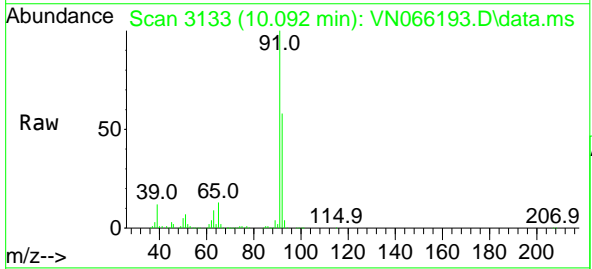
Instrument :
 MSVOA_N
 ClientSampled :



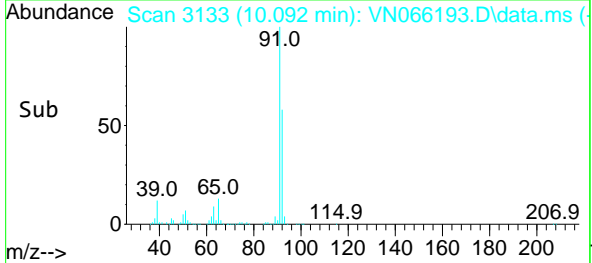
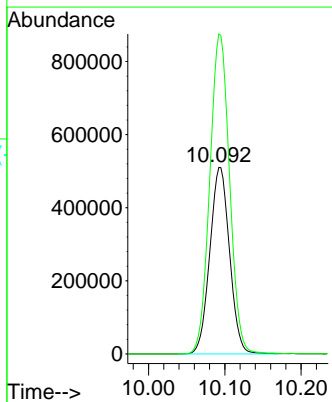
Tgt Ion: 43 Resp: 7322
 Ion Ratio Lower Upper
 43 100
 58 35.2 27.5 41.3

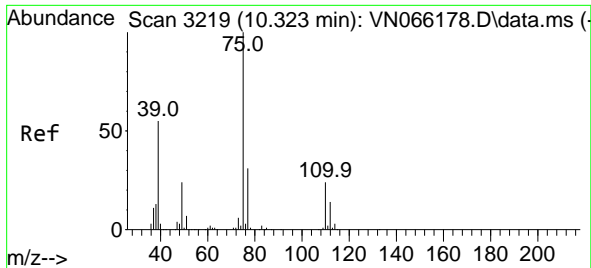


#52
 Toluene
 Concen: 65.69 ug/l
 RT: 10.092 min Scan# 3133
 Delta R.T. -0.003 min
 Lab File: VN066193.D
 Acq: 12 Mar 2021 19:43



Tgt Ion: 92 Resp: 915921
 Ion Ratio Lower Upper
 92 100
 91 172.3 137.5 206.3

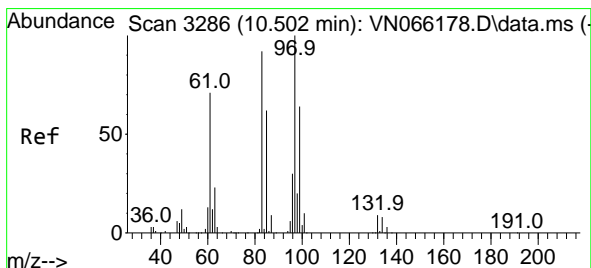
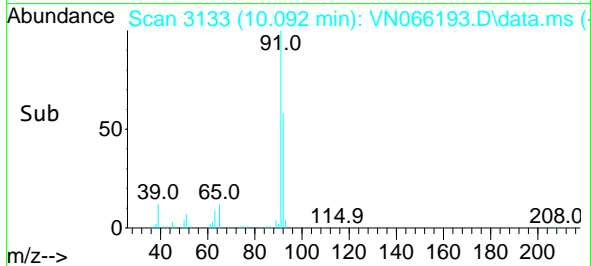
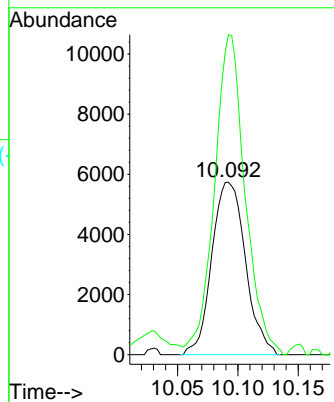
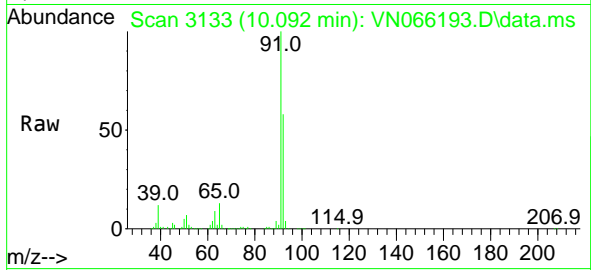




#53
 t-1,3-Dichloropropene
 Concen: 1.15 ug/l
 RT: 10.092 min Scan# 3133
 Delta R.T. -0.231 min
 Lab File: VN066193.D
 Acq: 12 Mar 2021 19:43

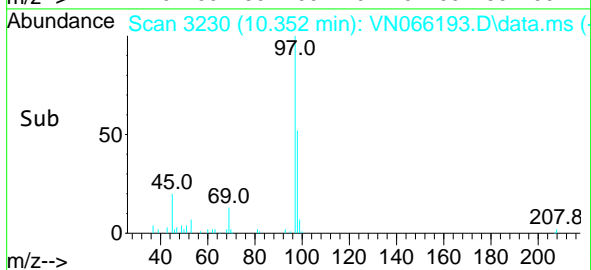
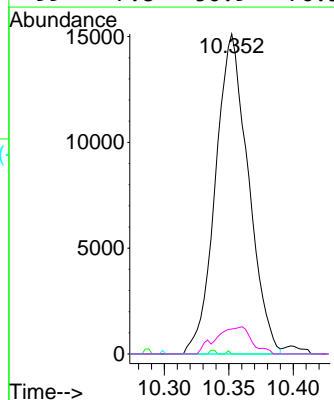
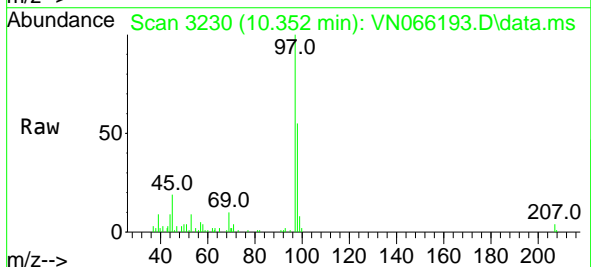
Instrument :
 MSVOA_N
 ClientSampled :

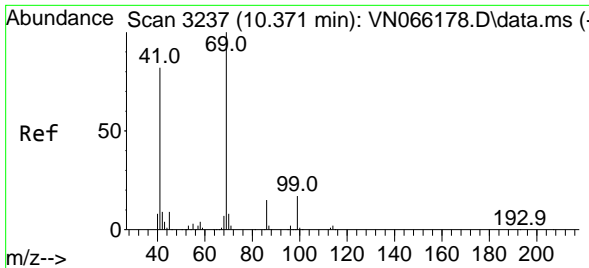
Tgt Ion: 75 Resp: 11125
 Ion Ratio Lower Upper
 75 100
 77 182.8 25.0 37.4#



#55
 1,1,2-Trichloroethane
 Concen: 4.67 ug/l
 RT: 10.352 min Scan# 3230
 Delta R.T. -0.150 min
 Lab File: VN066193.D
 Acq: 12 Mar 2021 19:43

Tgt Ion: 97 Resp: 26744
 Ion Ratio Lower Upper
 97 100
 83 0.0 73.3 109.9#
 85 0.0 49.8 74.8#
 99 7.8 50.9 76.3#

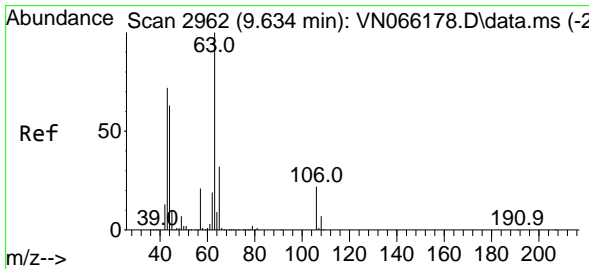
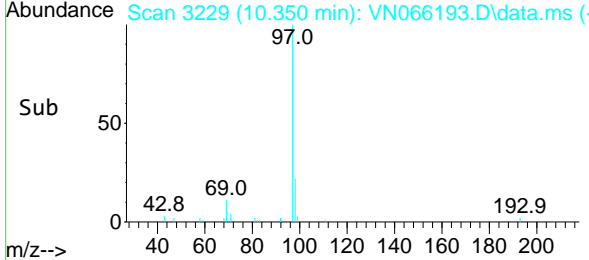
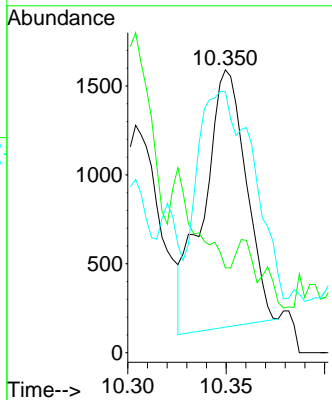
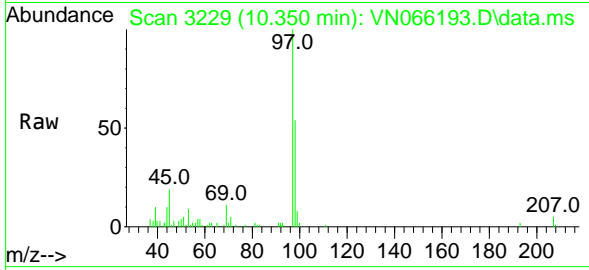




#56
 Ethyl methacrylate
 Concen: 2.26 ug/l
 RT: 10.350 min Scan# 3229
 Delta R.T. -0.021 min
 Lab File: VN066193.D
 Acq: 12 Mar 2021 19:43

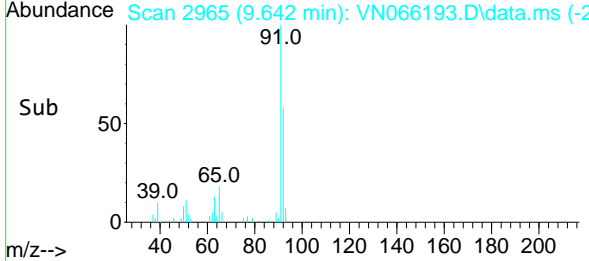
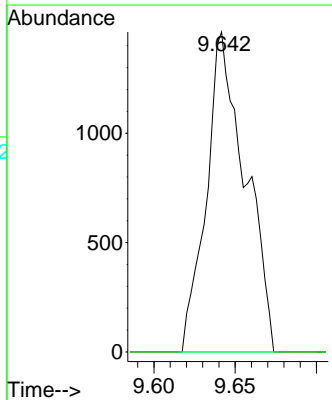
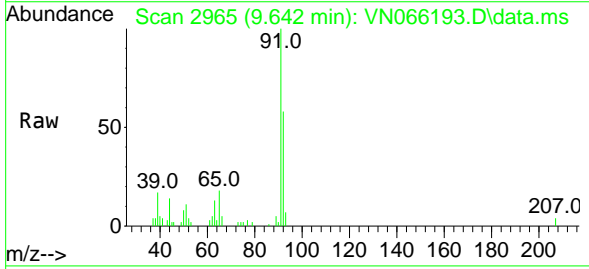
Instrument :
 MSVOA_N
 ClientSampled :

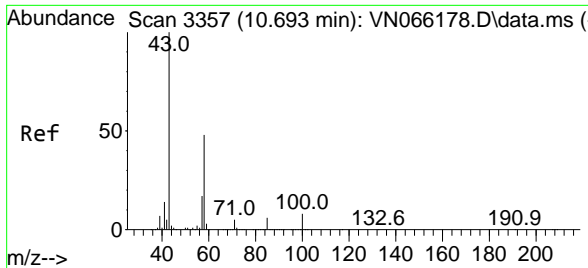
Tgt Ion	Resp	Lower	Upper
69	100		
41	0.0	66.2	99.4#
39	0.0	31.5	47.3#



#58
 2-Chloroethyl Vinyl ether
 Concen: 17.86 ug/l
 RT: 9.642 min Scan# 2965
 Delta R.T. 0.009 min
 Lab File: VN066193.D
 Acq: 12 Mar 2021 19:43

Tgt Ion	Resp	Lower	Upper
63	100		
106	0.0	17.6	26.4#

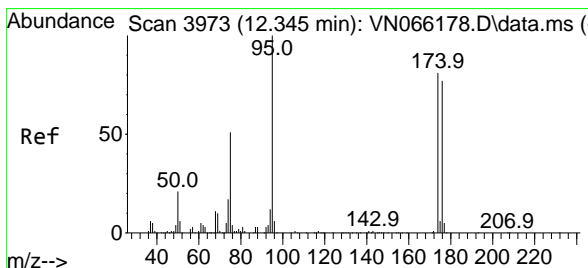
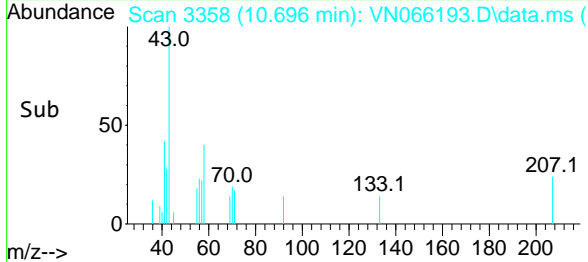
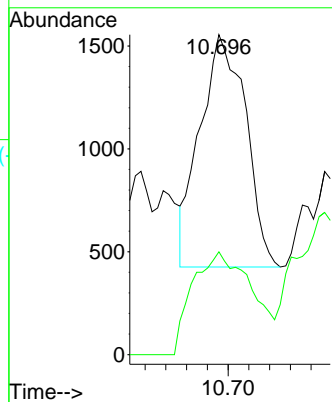
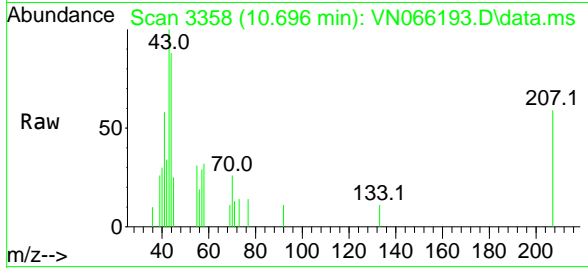




#59
 2-Hexanone
 Concen: Below Cal
 RT: 10.696 min Scan# 3358
 Delta R.T. 0.003 min
 Lab File: VN066193.D
 Acq: 12 Mar 2021 19:43

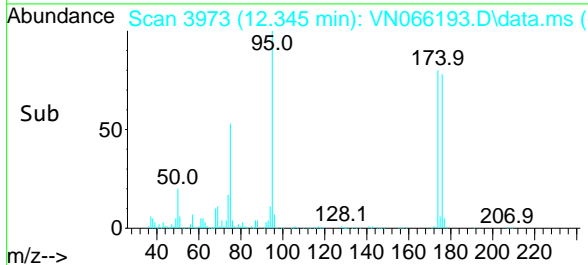
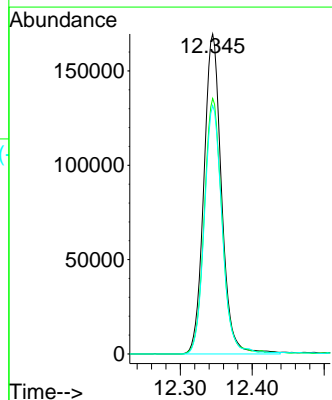
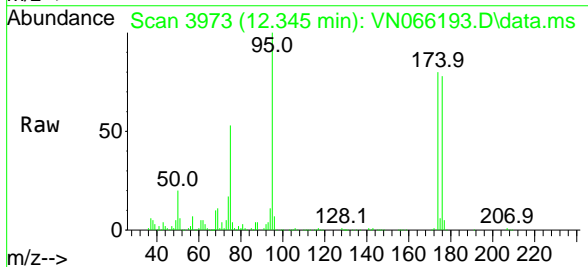
Instrument :
 MSVOA_N
 ClientSampled :

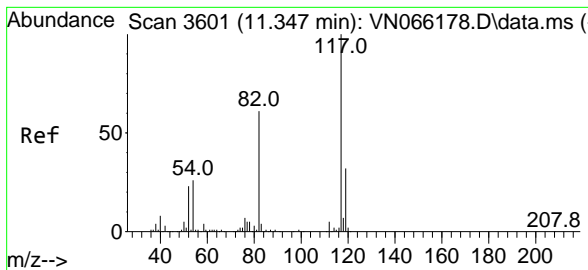
Tgt Ion: 43 Resp: 1725
 Ion Ratio Lower Upper
 43 100
 58 58.1 23.8 71.5



#62
 4-Bromofluorobenzene
 Concen: 39.80 ug/l
 RT: 12.345 min Scan# 3973
 Delta R.T. -0.003 min
 Lab File: VN066193.D
 Acq: 12 Mar 2021 19:43

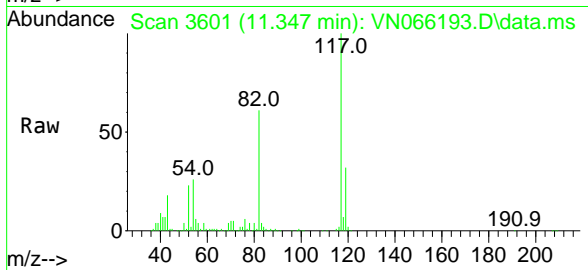
Tgt Ion: 95 Resp: 289765
 Ion Ratio Lower Upper
 95 100
 174 80.5 0.0 162.4
 176 78.4 0.0 156.2



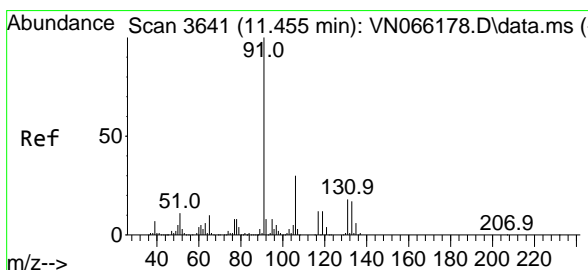
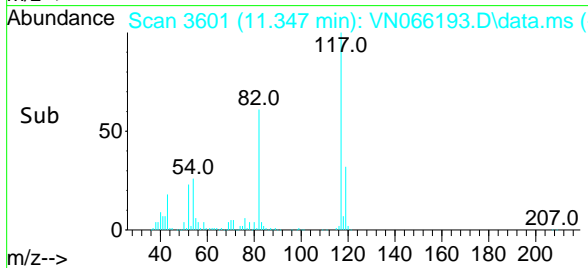
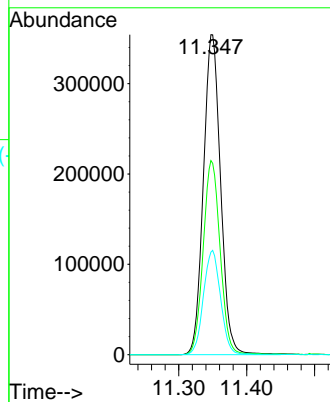


#63
 Chlorobenzene-d5
 Concen: 50.00 ug/l
 RT: 11.347 min Scan# 3601
 Delta R.T. -0.003 min
 Lab File: VN066193.D
 Acq: 12 Mar 2021 19:43

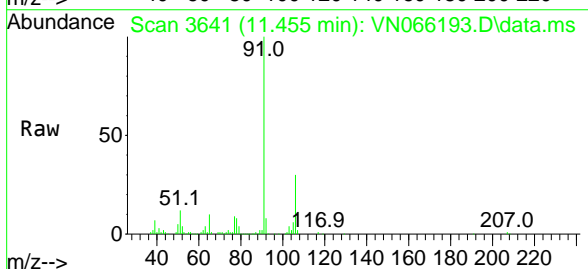
Instrument :
 MSVOA_N
 ClientSampled :



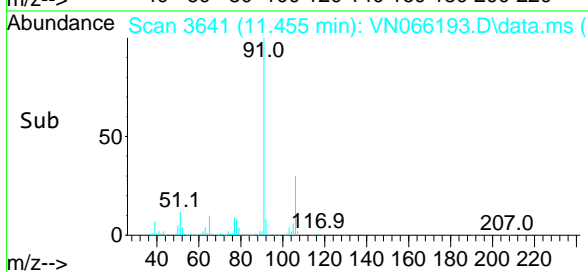
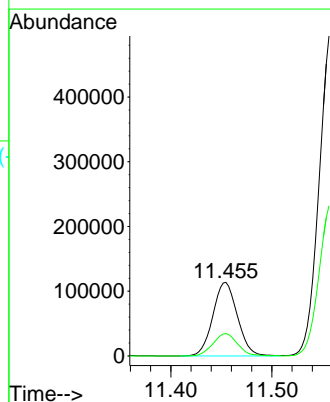
Tgt Ion:117 Resp: 622968
 Ion Ratio Lower Upper
 117 100
 82 60.7 49.0 73.6
 119 32.0 25.7 38.5

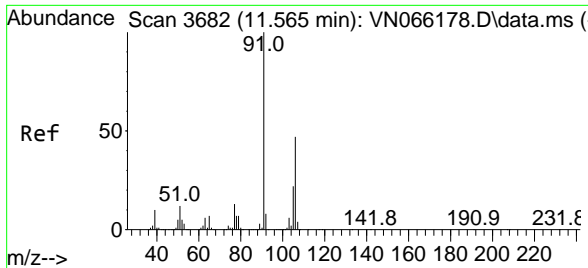


#67
 Ethyl Benzene
 Concen: 8.27 ug/l
 RT: 11.455 min Scan# 3641
 Delta R.T. -0.000 min
 Lab File: VN066193.D
 Acq: 12 Mar 2021 19:43



Tgt Ion: 91 Resp: 191885
 Ion Ratio Lower Upper
 91 100
 106 30.4 24.2 36.2

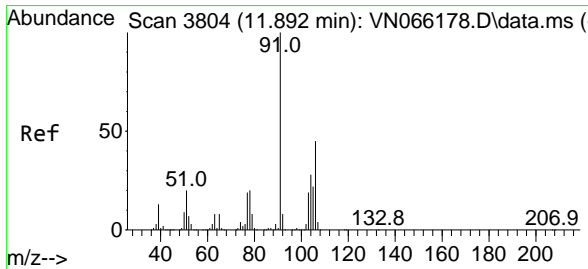
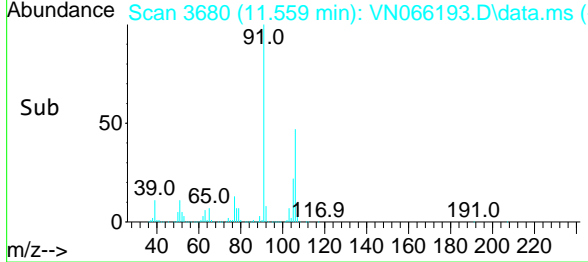
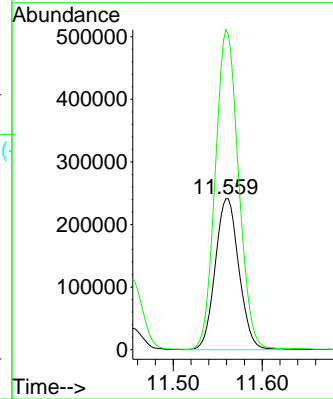
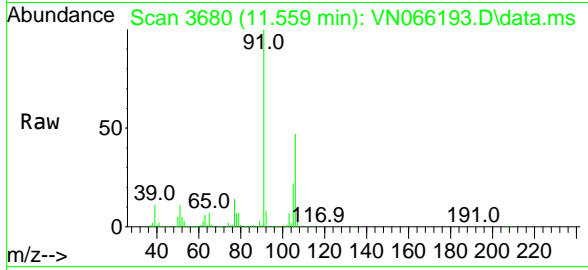




#68
 m/p-Xylenes
 Concen: 51.90 ug/l
 RT: 11.559 min Scan# 3680
 Delta R.T. -0.005 min
 Lab File: VN066193.D
 Acq: 12 Mar 2021 19:43

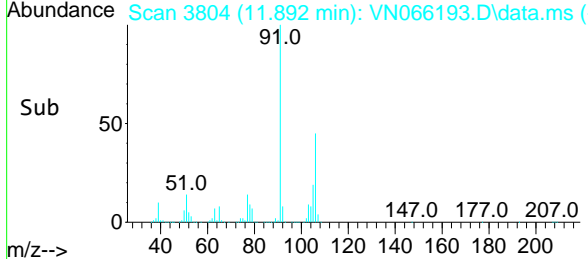
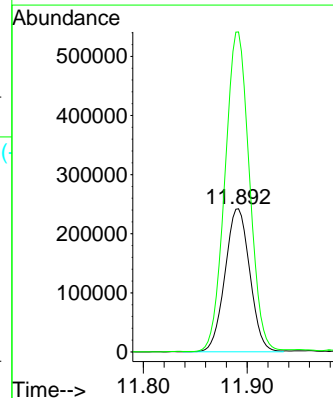
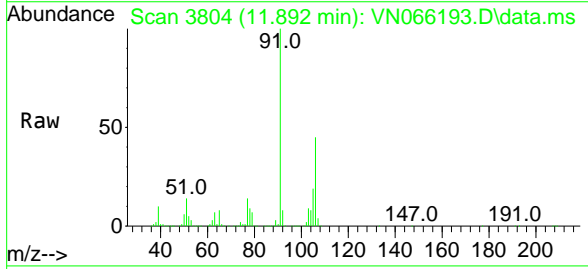
Instrument :
 MSVOA_N
 ClientSampled :

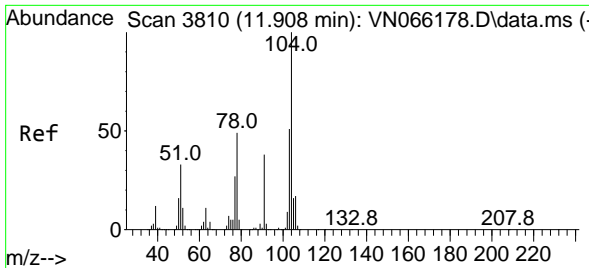
Tgt Ion:106 Resp: 446237
 Ion Ratio Lower Upper
 106 100
 91 207.8 168.2 252.4



#69
 o-Xylene
 Concen: 48.08 ug/l
 RT: 11.892 min Scan# 3804
 Delta R.T. -0.000 min
 Lab File: VN066193.D
 Acq: 12 Mar 2021 19:43

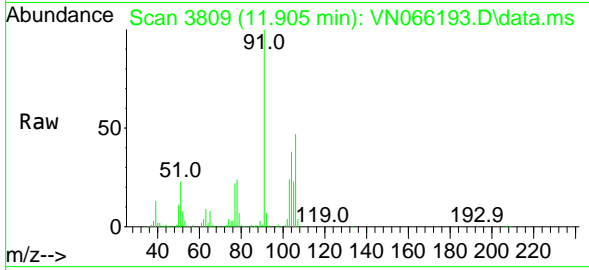
Tgt Ion:106 Resp: 401483
 Ion Ratio Lower Upper
 106 100
 91 220.6 111.8 335.3





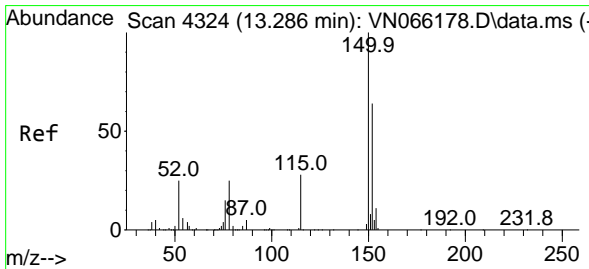
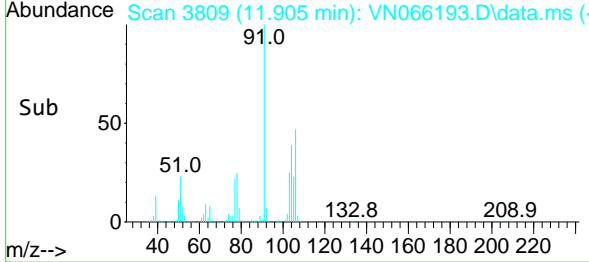
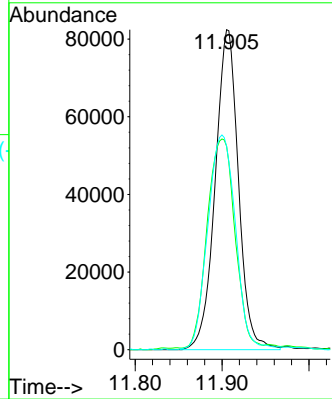
#70
 Styrene
 Concen: 12.05 ug/l
 RT: 11.905 min Scan# 3809
 Delta R.T. -0.003 min
 Lab File: VN066193.D
 Acq: 12 Mar 2021 19:43

Instrument :
 MSVOA_N
 ClientSampled :

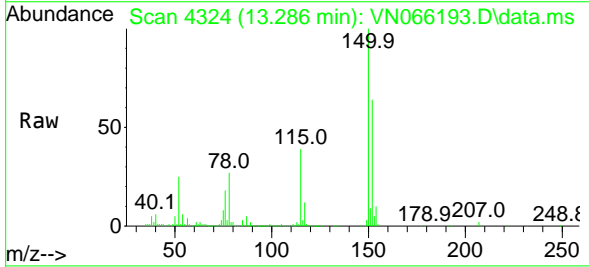


Tgt Ion:104 Resp: 153016

Ion	Ratio	Lower	Upper
104	100		
78	77.8	43.8	65.6#
103	80.2	43.7	65.5#

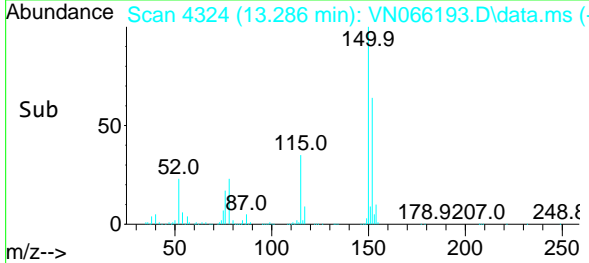
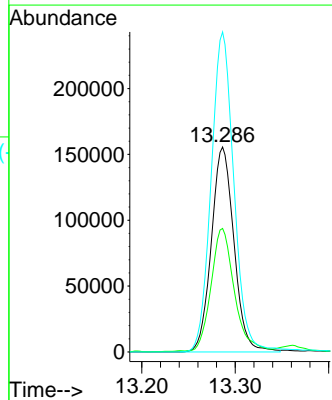


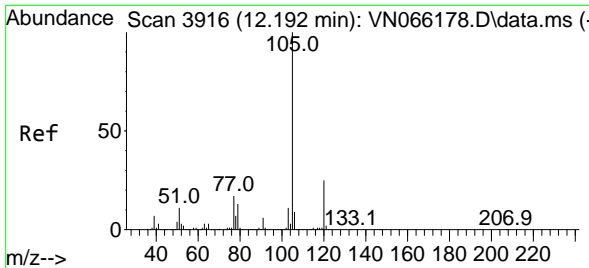
#72
 1,4-Dichlorobenzene-d4
 Concen: 50.00 ug/l
 RT: 13.286 min Scan# 4324
 Delta R.T. -0.003 min
 Lab File: VN066193.D
 Acq: 12 Mar 2021 19:43



Tgt Ion:152 Resp: 261988

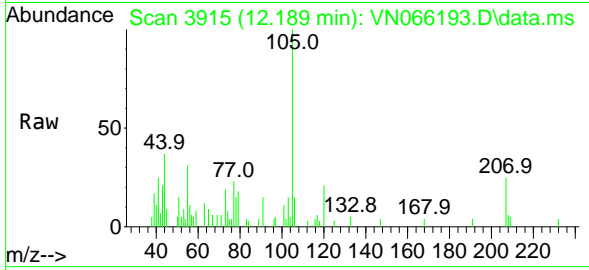
Ion	Ratio	Lower	Upper
152	100		
115	61.1	29.4	88.3
150	157.9	0.0	352.2



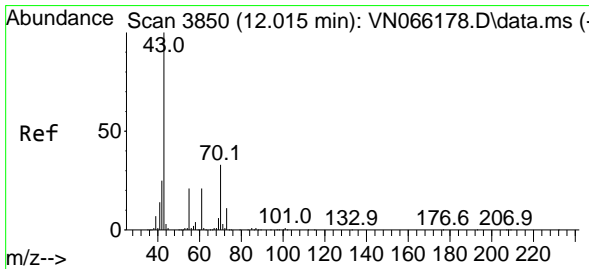
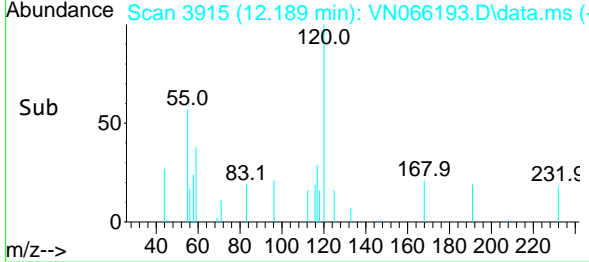
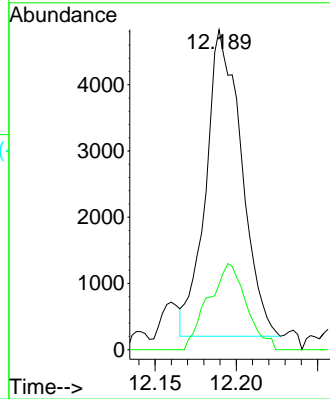


#73
 Isopropylbenzene
 Concen: 0.36 ug/l
 RT: 12.189 min Scan# 3915
 Delta R.T. -0.006 min
 Lab File: VN066193.D
 Acq: 12 Mar 2021 19:43

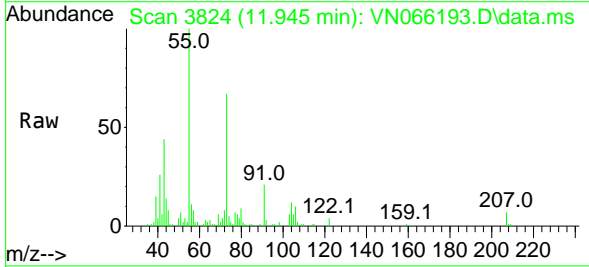
Instrument :
 MSVOA_N
 ClientSampled :



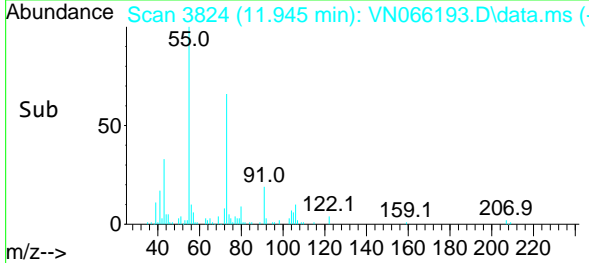
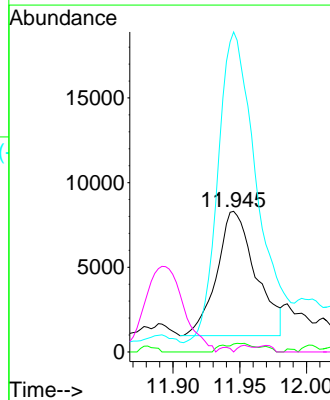
Tgt Ion:105 Resp: 7072
 Ion Ratio Lower Upper
 105 100
 120 29.8 12.8 38.3

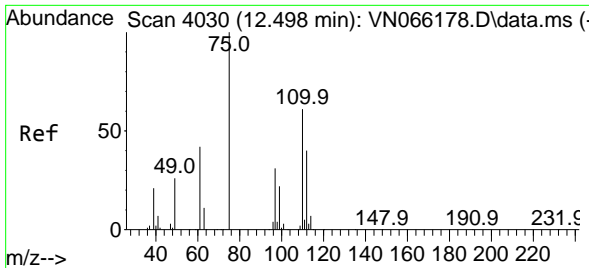


#74
 N-ethyl acetate
 Concen: 6.02 ug/l
 RT: 11.945 min Scan# 3824
 Delta R.T. -0.070 min
 Lab File: VN066193.D
 Acq: 12 Mar 2021 19:43



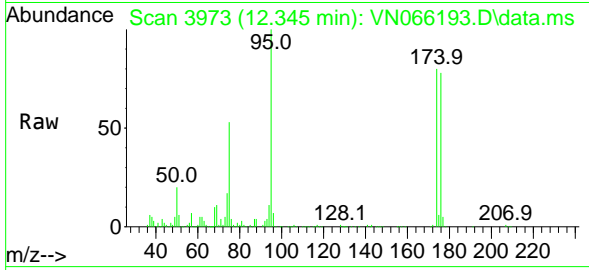
Tgt Ion: 43 Resp: 14825
 Ion Ratio Lower Upper
 43 100
 70 2.3 26.2 39.4#
 55 255.1 17.2 25.8#
 61 0.0 17.0 25.4#



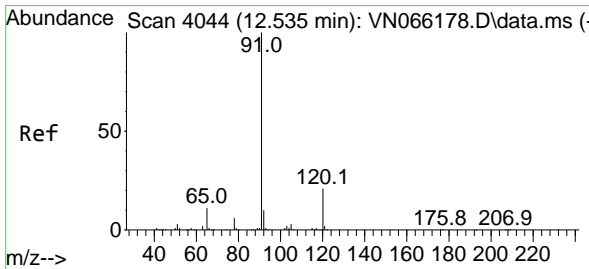
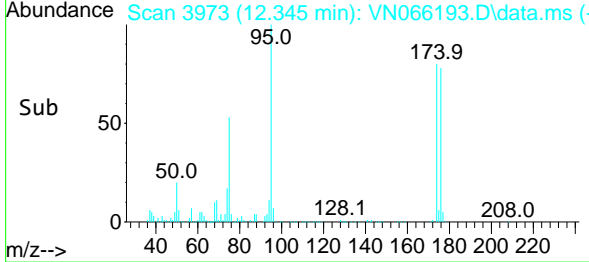
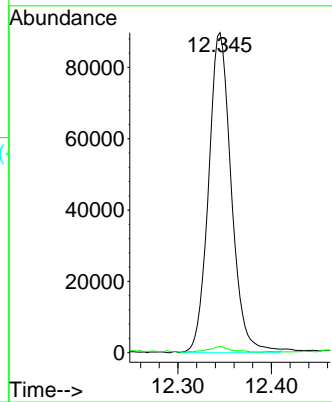


#76
 1,2,3-Trichloropropane
 Concen: 24.59 ug/l
 RT: 12.345 min Scan# 3973
 Delta R.T. -0.153 min
 Lab File: VN066193.D
 Acq: 12 Mar 2021 19:43

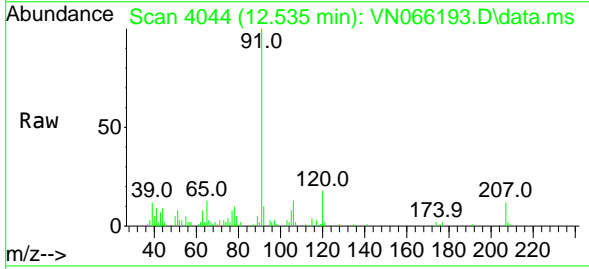
Instrument :
 MSVOA_N
 ClientSampled :



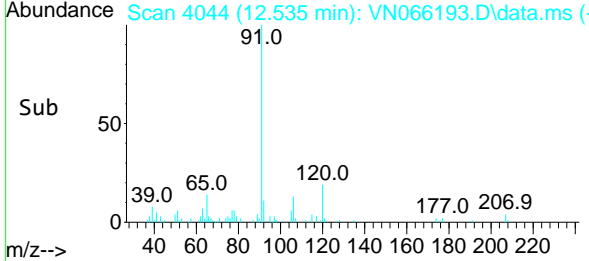
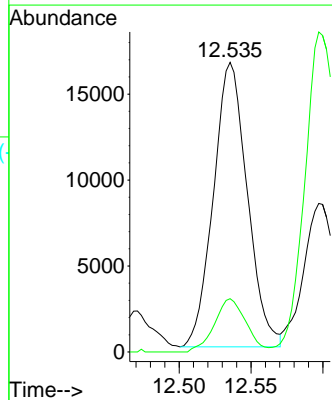
Tgt Ion: 75 Resp: 151843
 Ion Ratio Lower Upper
 75 100
 77 1.6 0.0 0.0#

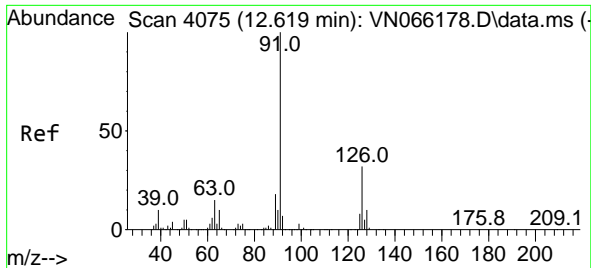


#78
 n-propylbenzene
 Concen: 1.19 ug/l
 RT: 12.535 min Scan# 4044
 Delta R.T. 0.000 min
 Lab File: VN066193.D
 Acq: 12 Mar 2021 19:43



Tgt Ion: 91 Resp: 27138
 Ion Ratio Lower Upper
 91 100
 120 17.4 10.8 32.4

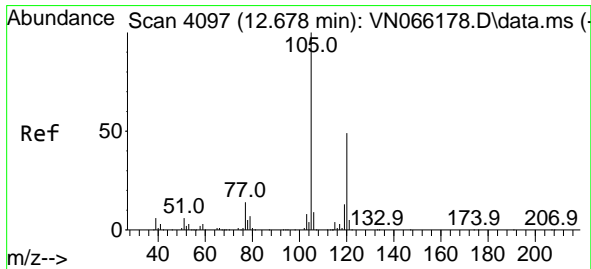
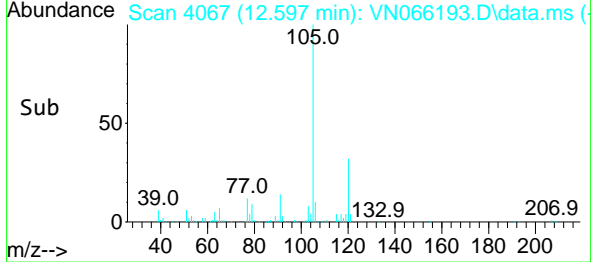
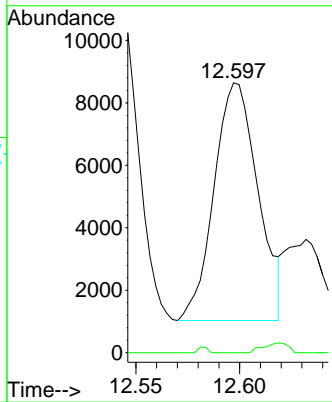
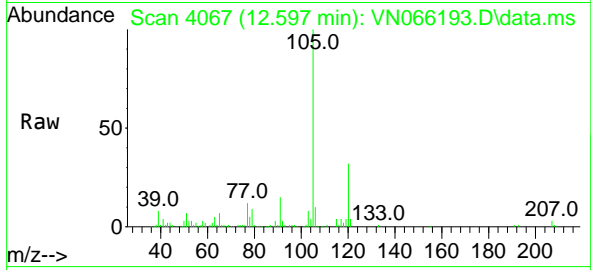




#79
 2-Chlorotoluene
 Concen: 0.79 ug/l
 RT: 12.597 min Scan# 4067
 Delta R.T. -0.021 min
 Lab File: VN066193.D
 Acq: 12 Mar 2021 19:43

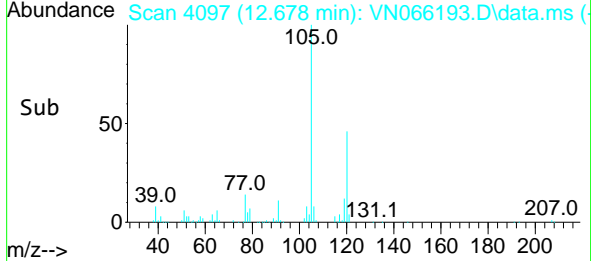
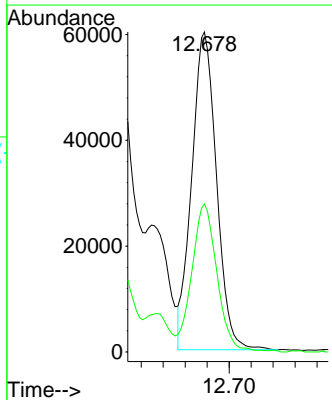
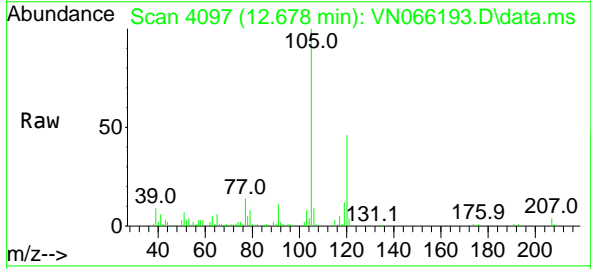
Instrument :
 MSVOA_N
 ClientSampled :

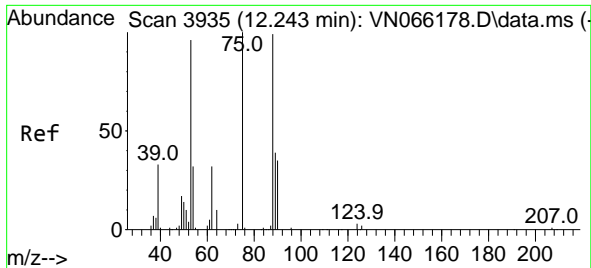
Tgt Ion: 91 Resp: 11223
 Ion Ratio Lower Upper
 91 100
 126 0.0 16.3 48.8#



#80
 1,3,5-Trimethylbenzene
 Concen: 5.70 ug/l
 RT: 12.678 min Scan# 4097
 Delta R.T. -0.000 min
 Lab File: VN066193.D
 Acq: 12 Mar 2021 19:43

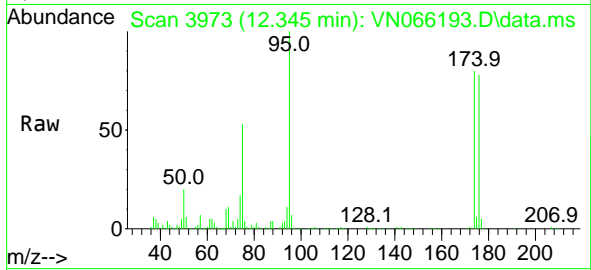
Tgt Ion:105 Resp: 93946
 Ion Ratio Lower Upper
 105 100
 120 46.5 23.9 71.8



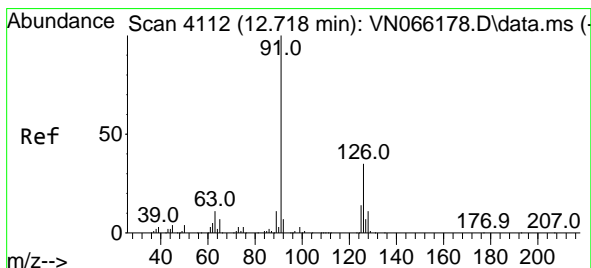
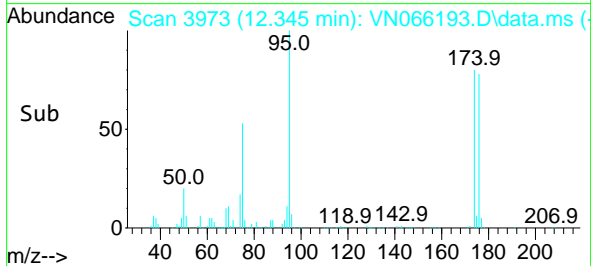
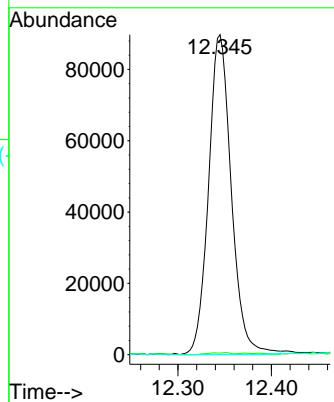


#81
 trans-1,4-Dichloro-2-butene
 Concen: 64.77 ug/l
 RT: 12.345 min Scan# 3973
 Delta R.T. 0.099 min
 Lab File: VN066193.D
 Acq: 12 Mar 2021 19:43

Instrument :
 MSVOA_N
 ClientSampled :

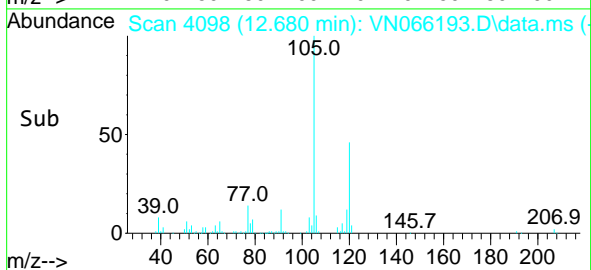
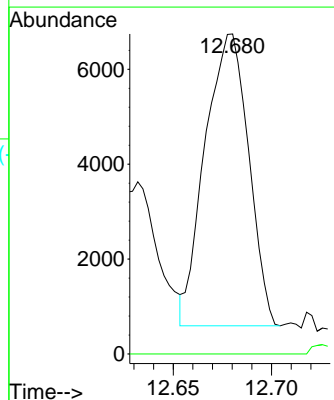
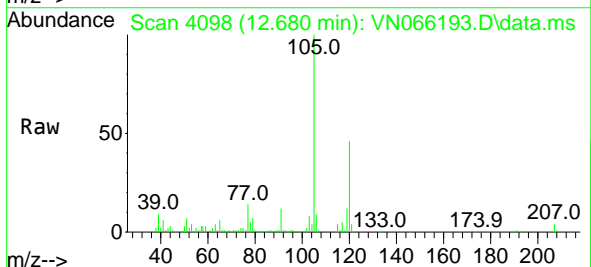


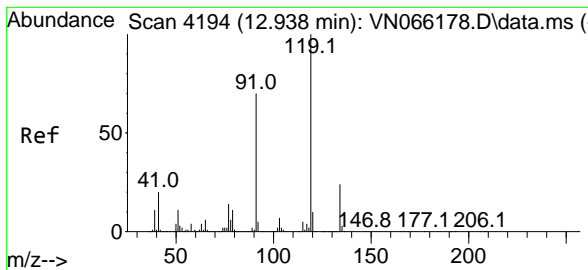
Tgt Ion: 75 Resp: 151843
 Ion Ratio Lower Upper
 75 100
 53 0.2 77.8 116.6#
 89 0.0 33.7 50.5#



#82
 4-Chlorotoluene
 Concen: 0.67 ug/l
 RT: 12.680 min Scan# 4098
 Delta R.T. -0.038 min
 Lab File: VN066193.D
 Acq: 12 Mar 2021 19:43

Tgt Ion: 91 Resp: 9445
 Ion Ratio Lower Upper
 91 100
 126 0.0 15.7 47.1#



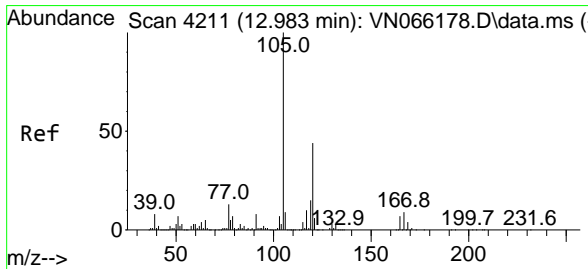
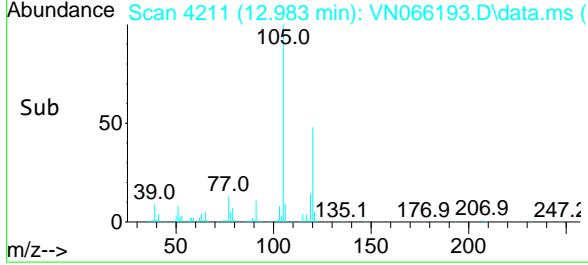
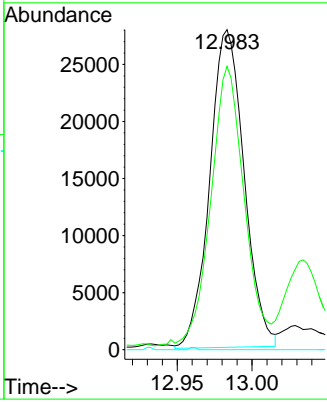
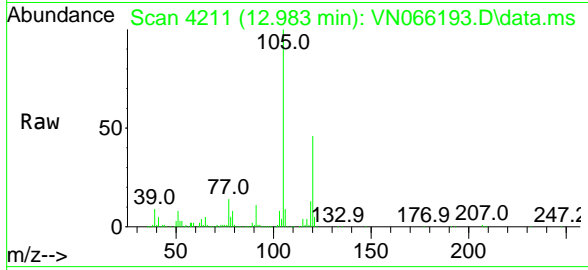


#83
 tert-Butylbenzene
 Concen: 3.21 ug/l
 RT: 12.983 min Scan# 4211
 Delta R.T. 0.045 min
 Lab File: VN066193.D
 Acq: 12 Mar 2021 19:43

Instrument :
 MSVOA_N
 ClientSampled :

Tgt Ion:119 Resp: 44566

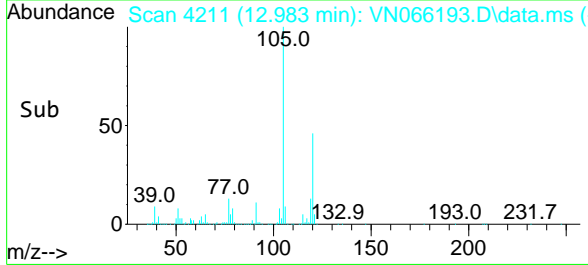
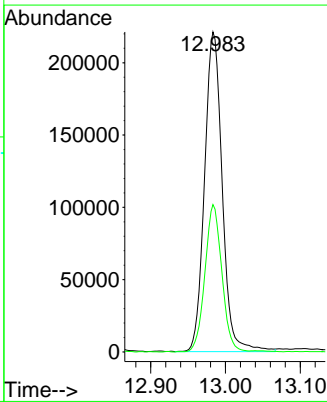
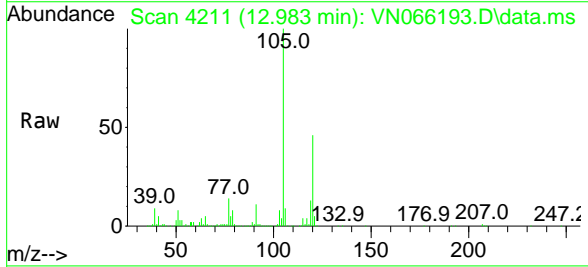
Ion	Ratio	Lower	Upper
119	100		
91	85.3	33.7	101.1
134	0.0	12.3	36.9#

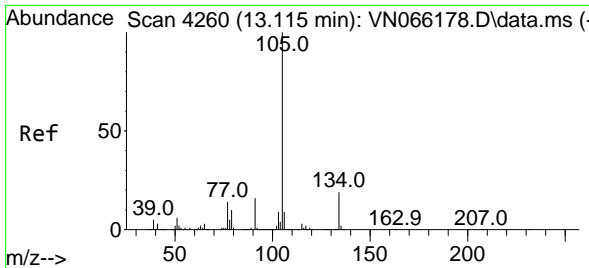


#84
 1,2,4-Trimethylbenzene
 Concen: 22.30 ug/l
 RT: 12.983 min Scan# 4211
 Delta R.T. 0.000 min
 Lab File: VN066193.D
 Acq: 12 Mar 2021 19:43

Tgt Ion:105 Resp: 364117

Ion	Ratio	Lower	Upper
105	100		
120	44.0	22.1	66.5

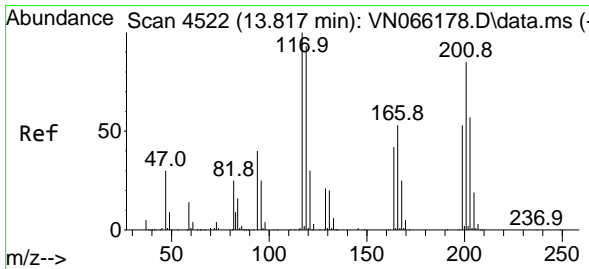
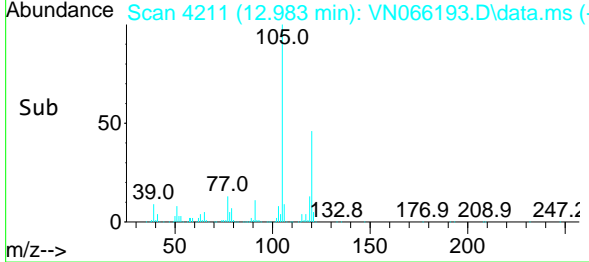
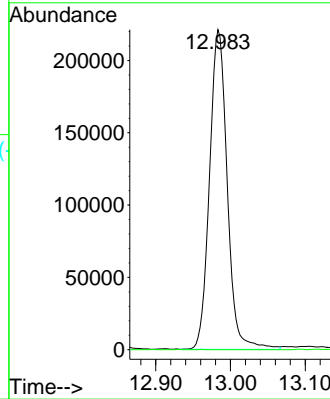
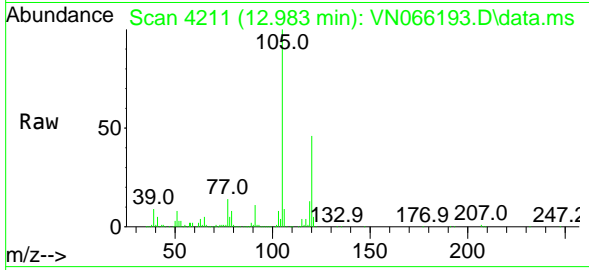




#85
 sec-Butylbenzene
 Concen: 19.63 ug/l
 RT: 12.983 min Scan# 4211
 Delta R.T. -0.132 min
 Lab File: VN066193.D
 Acq: 12 Mar 2021 19:43

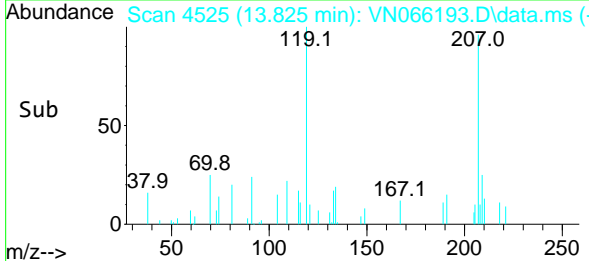
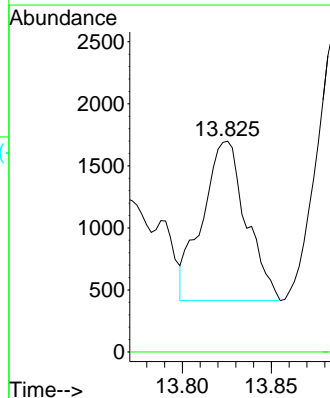
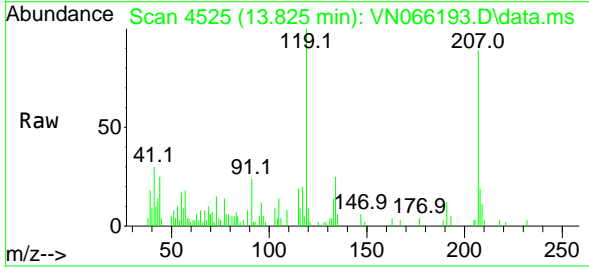
Instrument :
 MSVOA_N
 ClientSampled :

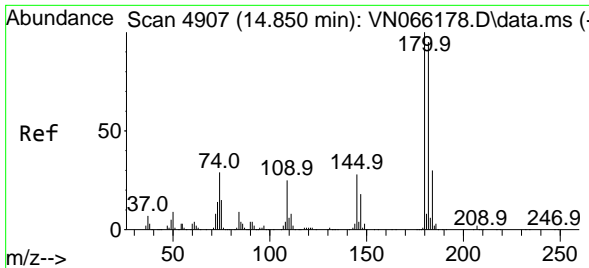
Tgt Ion:105 Resp: 364117
 Ion Ratio Lower Upper
 105 100
 134 0.0 9.6 28.8#



#90
 Hexachloroethane
 Concen: 0.84 ug/l
 RT: 13.825 min Scan# 4525
 Delta R.T. 0.008 min
 Lab File: VN066193.D
 Acq: 12 Mar 2021 19:43

Tgt Ion:117 Resp: 2194
 Ion Ratio Lower Upper
 117 100
 201 0.0 42.5 127.5#

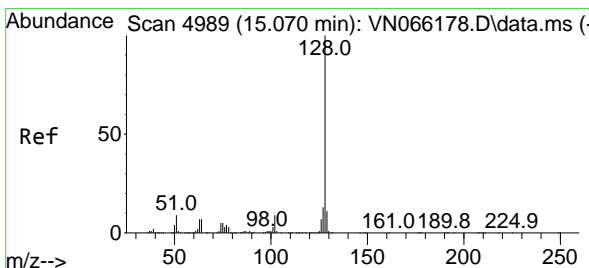
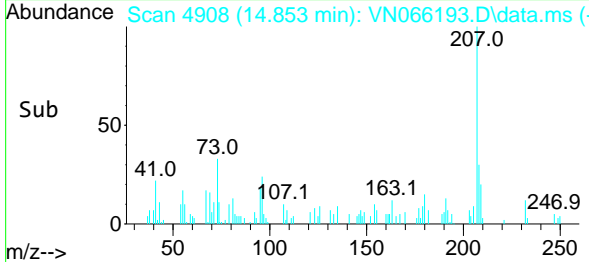
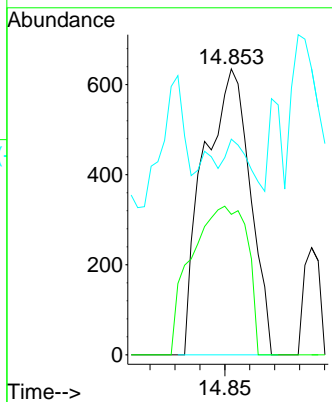
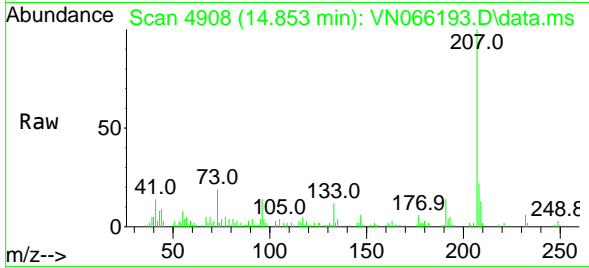




#93
 1,2,4-Trichlorobenzene
 Concen: 2.91 ug/l
 RT: 14.853 min Scan# 4908
 Delta R.T. 0.003 min
 Lab File: VN066193.D
 Acq: 12 Mar 2021 19:43

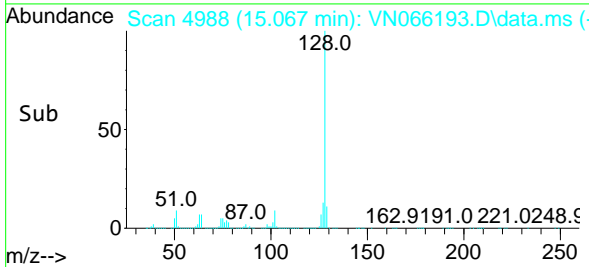
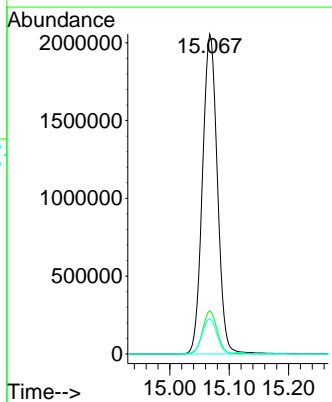
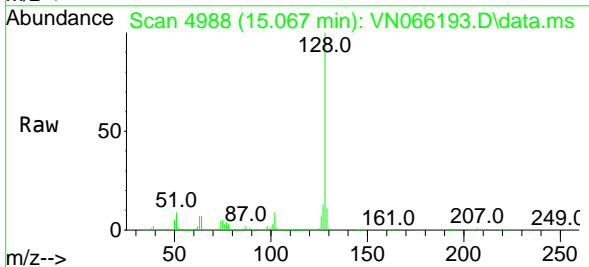
Instrument :
 MSVOA_N
 ClientSampled :

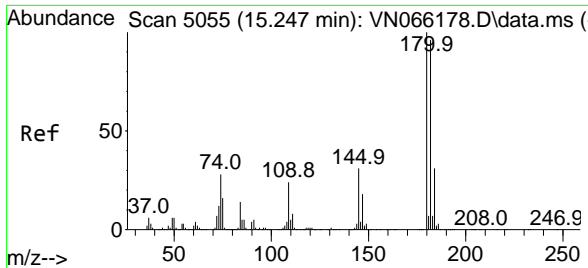
Tgt Ion	Resp	Lower	Upper
180	100		
182	62.9	47.4	142.2
145	8.1	14.1	42.3#



#95
 Naphthalene
 Concen: 214.62 ug/l
 RT: 15.067 min Scan# 4988
 Delta R.T. -0.003 min
 Lab File: VN066193.D
 Acq: 12 Mar 2021 19:43

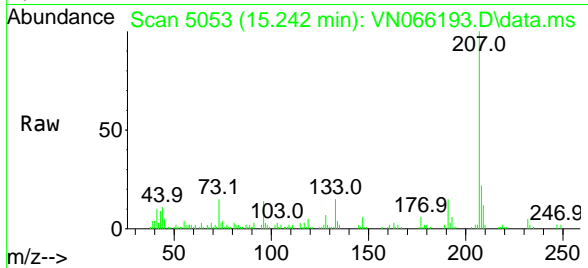
Tgt Ion	Resp	Lower	Upper
128	100		
127	13.2	10.3	15.5
129	11.2	8.4	12.6





#96
 1,2,3-Trichlorobenzene
 Concen: 1.99 ug/l
 RT: 15.242 min Scan# 5053
 Delta R.T. -0.005 min
 Lab File: VN066193.D
 Acq: 12 Mar 2021 19:43

Instrument :
 MSVOA_N
 ClientSampled :



Tgt Ion:180 Resp: 534

Ion	Ratio	Lower	Upper
180	100		
182	53.9	47.9	143.8
145	117.0	15.6	46.8#

