

Data Path : Z:\voasrv\HPCHEM1\MSVOA_N\Data\VN031224\
 Data File : VN081374.D
 Acq On : 12 Mar 2024 15:50
 Operator : JC\MD
 Sample : P1734-02 50X
 Misc : 5.0mL/MSVOA_N/WATER
 ALS Vial : 10 Sample Multiplier: 1

Instrument :
 MSVOA_N
 ClientSampleId :
 1339

Quant Time: Mar 13 04:53:26 2024
 Quant Method : Z:\voasrv\HPCHEM1\MSVOA_N\methods\82N030524W.M
 Quant Title : SW846 8260
 QLast Update : Wed Mar 06 03:12:57 2024
 Response via : Initial Calibration

Compound	R.T.	QIon	Response	Conc	Units	Dev(Min)

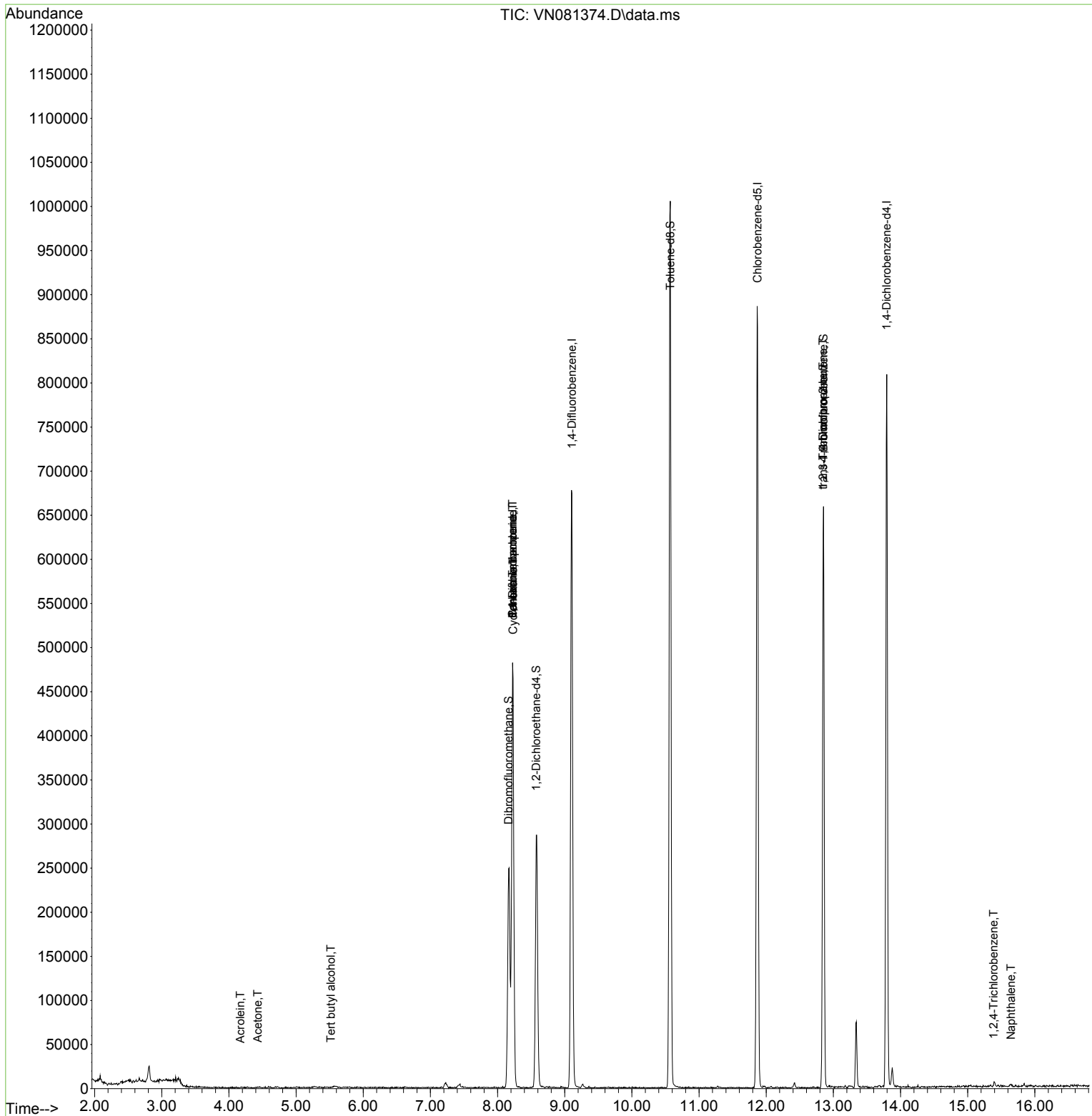
Internal Standards						
1) Pentafluorobenzene	8.224	168	323615	50.000	ug/l	0.00
34) 1,4-Difluorobenzene	9.106	114	576071	50.000	ug/l	0.00
63) Chlorobenzene-d5	11.871	117	498156	50.000	ug/l	0.00
72) 1,4-Dichlorobenzene-d4	13.794	152	203989	50.000	ug/l	0.00
System Monitoring Compounds						
33) 1,2-Dichloroethane-d4	8.577	65	232839	49.761	ug/l	0.00
Spiked Amount	50.000	Range 74 - 125	Recovery	=	99.520%	
35) Dibromofluoromethane	8.165	113	180195	51.055	ug/l	0.00
Spiked Amount	50.000	Range 75 - 124	Recovery	=	102.120%	
50) Toluene-d8	10.571	98	691544	52.415	ug/l	0.00
Spiked Amount	50.000	Range 86 - 113	Recovery	=	104.820%	
62) 4-Bromofluorobenzene	12.853	95	223475	47.923	ug/l	0.00
Spiked Amount	50.000	Range 64 - 133	Recovery	=	95.840%	
Target Compounds						
						Qvalue
11) Tert butyl alcohol	5.518	59	197	0.241	ug/l #	72
13) Acrolein	4.171	56	626	0.646	ug/l #	56
16) Acetone	4.430	43	1150	0.694	ug/l #	80
20) Methylene Chloride	5.259	84	1004	Below Cal	#	37
31) Cyclohexane	8.230	56	9091	1.283	ug/l #	3
36) 1,1-Dichloropropene	8.224	75	29767	5.228	ug/l #	51
38) Carbon Tetrachloride	8.224	117	38022	6.635	ug/l #	17
76) 1,2,3-Trichloropropane	12.847	75	122954	25.519	ug/l #	1
81) trans-1,4-Dichloro-2-b...	12.847	75	122954	71.219	ug/l #	14
93) 1,2,4-Trichlorobenzene	15.388	180	1078	0.285	ug/l #	66
95) Naphthalene	15.647	128	2737	0.203	ug/l #	75

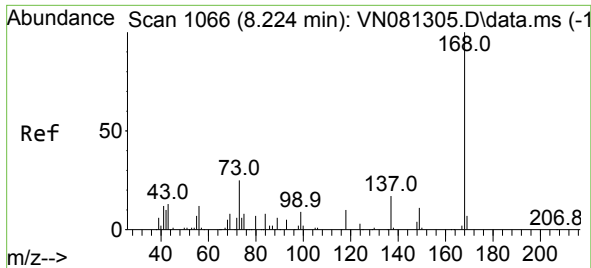
(#) = qualifier out of range (m) = manual integration (+) = signals summed

Data Path : Z:\voasrv\HPCHEM1\MSVOA_N\Data\VN031224\
 Data File : VN081374.D
 Acq On : 12 Mar 2024 15:50
 Operator : JC\MD
 Sample : P1734-02 50X
 Misc : 5.0mL/MSVOA_N/WATER
 ALS Vial : 10 Sample Multiplier: 1

Instrument :
 MSVOA_N
 ClientSampleId :
 1339

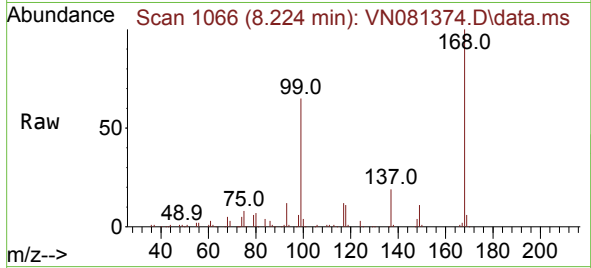
Quant Time: Mar 13 04:53:26 2024
 Quant Method : Z:\voasrv\HPCHEM1\MSVOA_N\methods\82N030524W.M
 Quant Title : SW846 8260
 QLast Update : Wed Mar 06 03:12:57 2024
 Response via : Initial Calibration



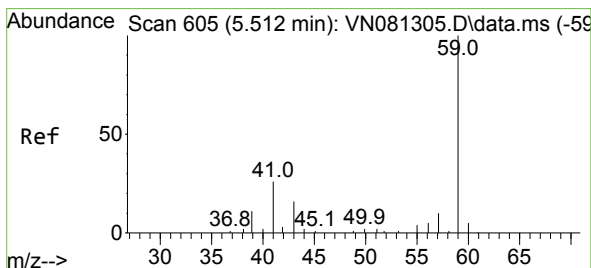
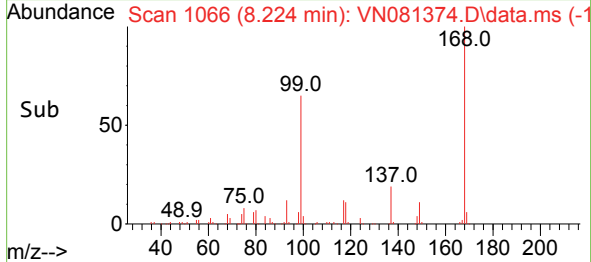
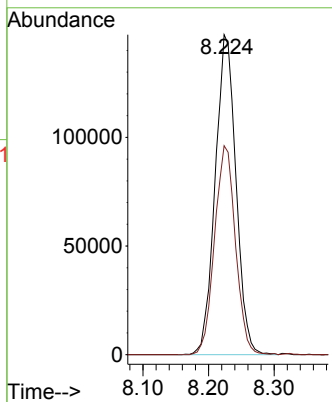


#1
 Pentafluorobenzene
 Concen: 50.000 ug/l
 RT: 8.224 min Scan# 1066
 Delta R.T. -0.000 min
 Lab File: VN081374.D
 Acq: 12 Mar 2024 15:50

Instrument : MSVOA_N
 ClientSampleId : 1339

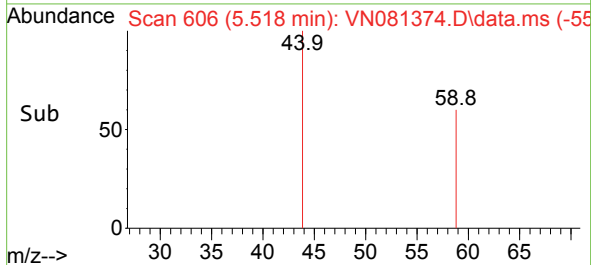
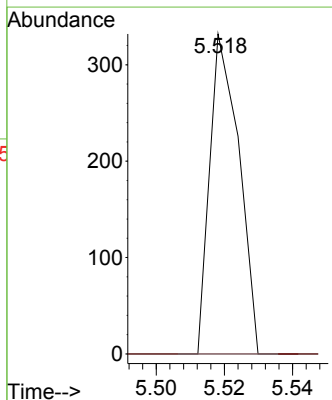
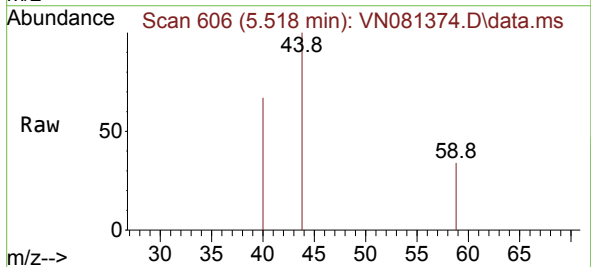


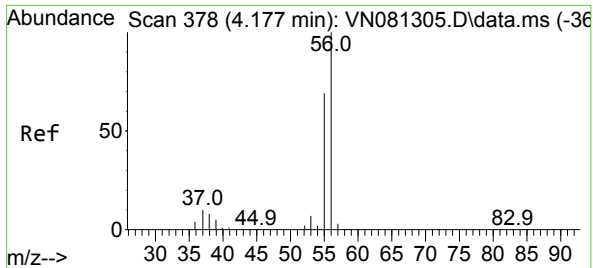
Tgt Ion:168 Resp: 323615
 Ion Ratio Lower Upper
 168 100
 99 65.3 59.9 89.9



#11
 Tert butyl alcohol
 Concen: 0.241 ug/l
 RT: 5.518 min Scan# 606
 Delta R.T. 0.006 min
 Lab File: VN081374.D
 Acq: 12 Mar 2024 15:50

Tgt Ion: 59 Resp: 197
 Ion Ratio Lower Upper
 59 100
 57 0.0 8.6 12.8#

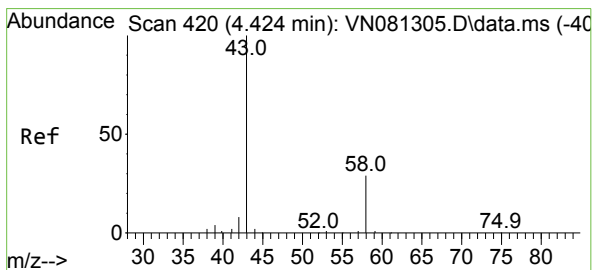
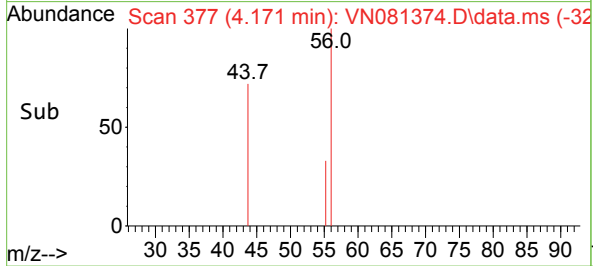
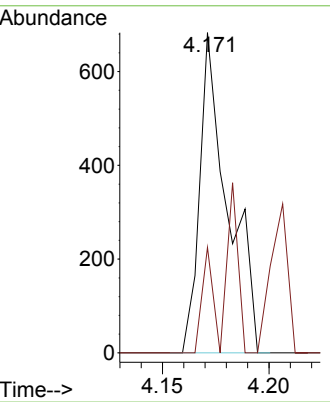
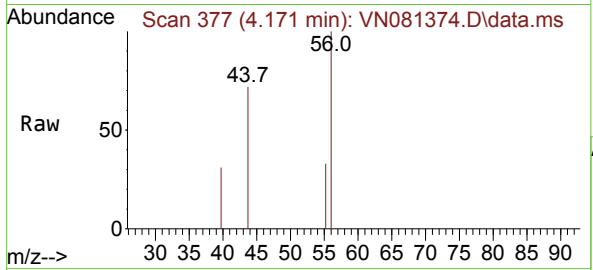




#13
 Acrolein
 Concen: 0.646 ug/l
 RT: 4.171 min Scan# 31
 Delta R.T. -0.006 min
 Lab File: VN081374.D
 Acq: 12 Mar 2024 15:50

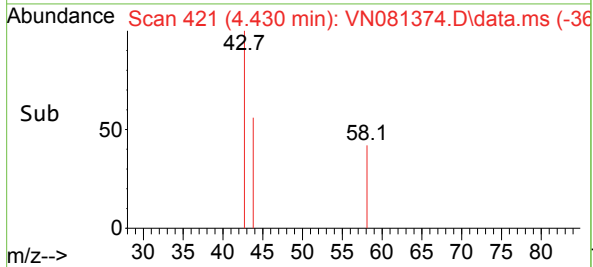
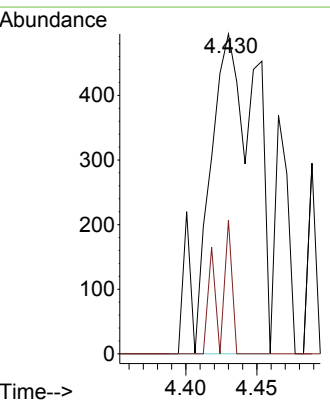
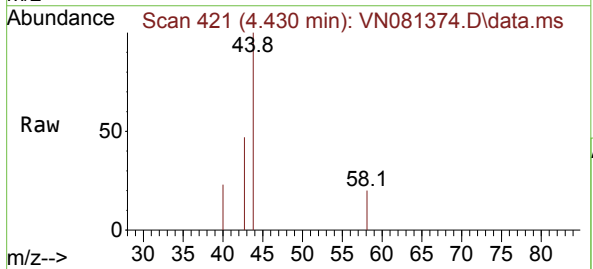
Instrument : MSVOA_N
 ClientSampleId : 1339

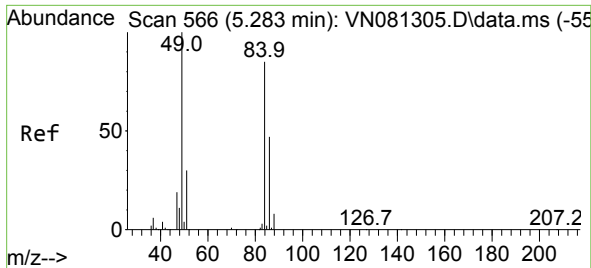
Tgt Ion: 56 Resp: 626
 Ion Ratio Lower Upper
 56 100
 55 33.1 55.3 82.9#



#16
 Acetone
 Concen: 0.694 ug/l
 RT: 4.430 min Scan# 421
 Delta R.T. 0.006 min
 Lab File: VN081374.D
 Acq: 12 Mar 2024 15:50

Tgt Ion: 43 Resp: 1150
 Ion Ratio Lower Upper
 43 100
 58 41.8 24.8 37.2#

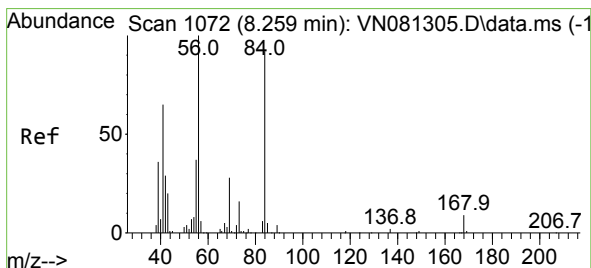
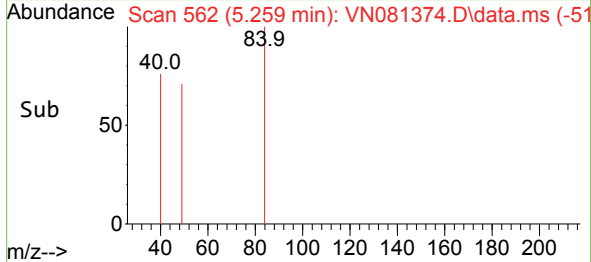
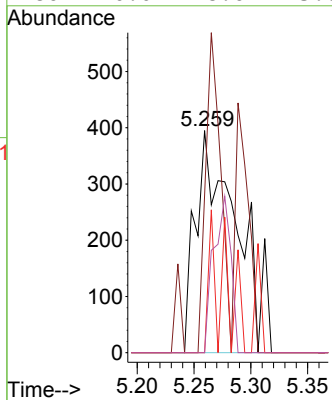
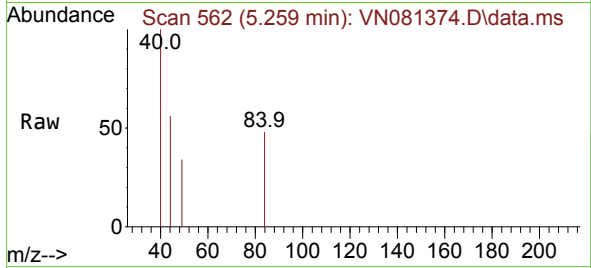




#20
 Methylene Chloride
 Concen: Below Cal
 RT: 5.259 min Scan# 51
 Delta R.T. -0.024 min
 Lab File: VN081374.D
 Acq: 12 Mar 2024 15:50

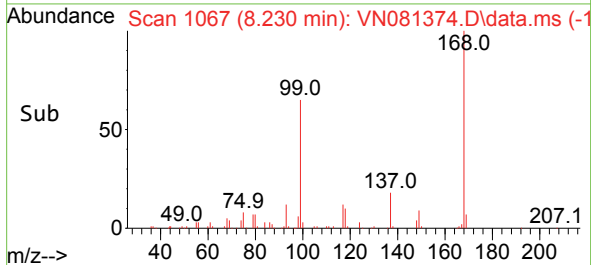
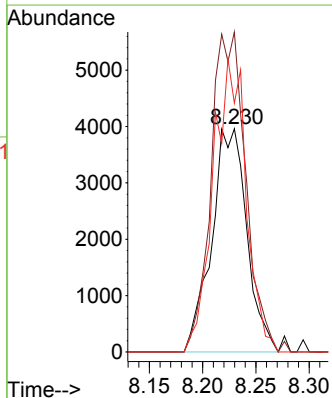
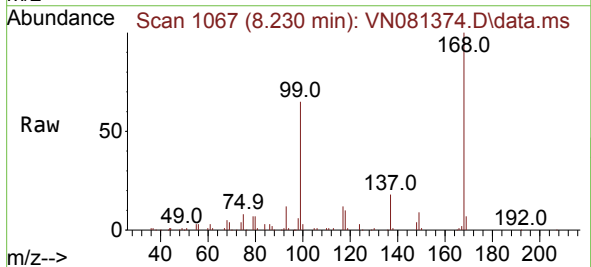
Instrument : MSVOA_N
 ClientSampleId : 1339

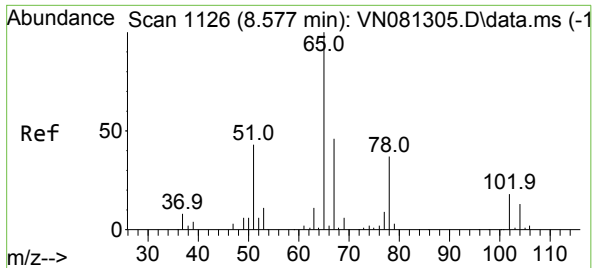
Tgt Ion	Resp	Lower	Upper
84	1004		
Ion Ratio			
84	100		
49	70.9	108.1	162.1#
51	0.0	32.9	49.3#
86	0.0	48.6	73.0#



#31
 Cyclohexane
 Concen: 1.283 ug/l
 RT: 8.230 min Scan# 1067
 Delta R.T. -0.029 min
 Lab File: VN081374.D
 Acq: 12 Mar 2024 15:50

Tgt Ion	Resp	Lower	Upper
56	9091		
Ion Ratio			
56	100		
69	143.3	20.1	30.1#
84	111.4	56.9	85.3#

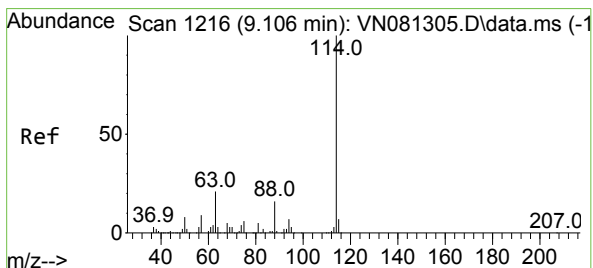
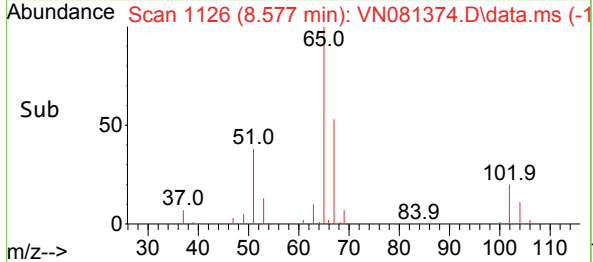
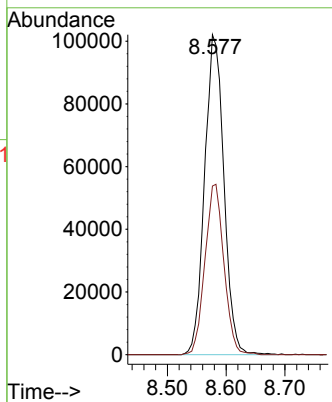
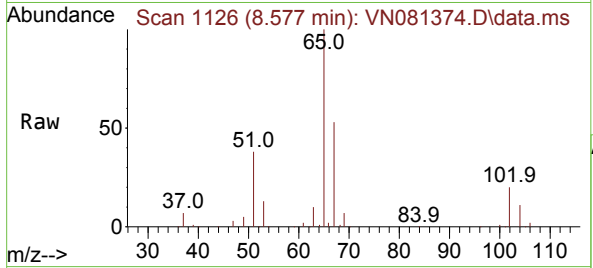




#33
 1,2-Dichloroethane-d4
 Concen: 49.761 ug/l
 RT: 8.577 min Scan# 1126
 Delta R.T. 0.000 min
 Lab File: VN081374.D
 Acq: 12 Mar 2024 15:50

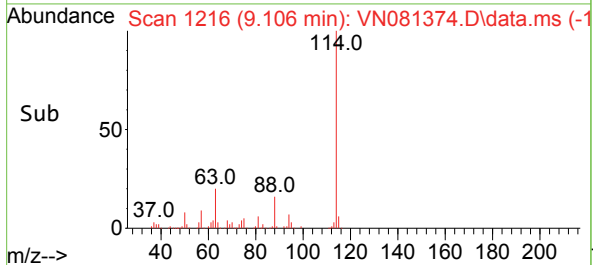
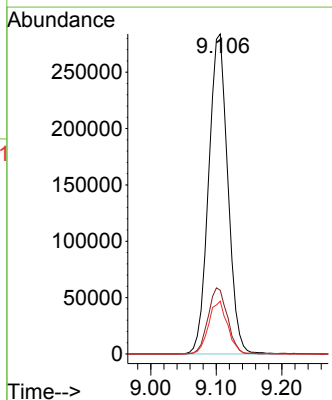
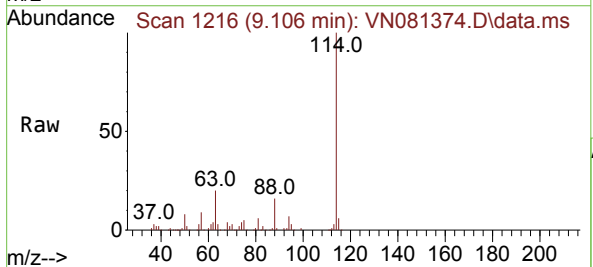
Instrument : MSVOA_N
 ClientSampleId : 1339

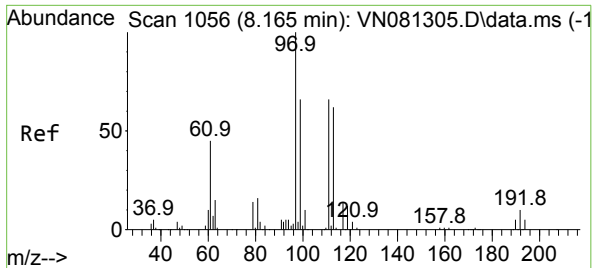
Tgt Ion: 65 Resp: 232839
 Ion Ratio Lower Upper
 65 100
 67 52.4 0.0 102.4



#34
 1,4-Difluorobenzene
 Concen: 50.000 ug/l
 RT: 9.106 min Scan# 1216
 Delta R.T. 0.000 min
 Lab File: VN081374.D
 Acq: 12 Mar 2024 15:50

Tgt Ion: 114 Resp: 576071
 Ion Ratio Lower Upper
 114 100
 63 19.9 0.0 48.0
 88 16.5 0.0 34.8

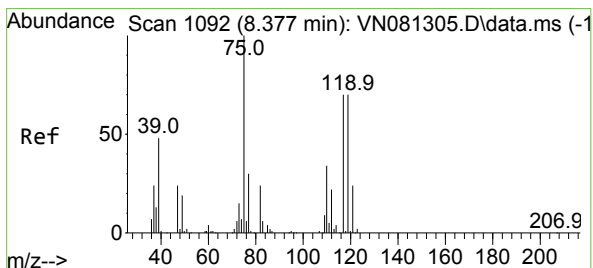
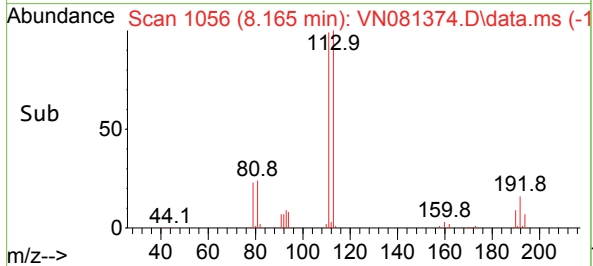
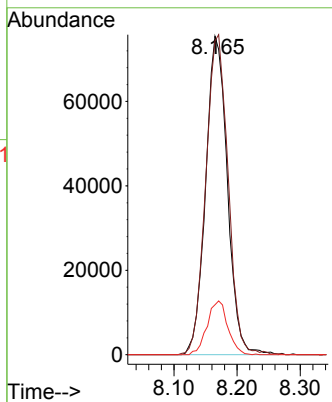
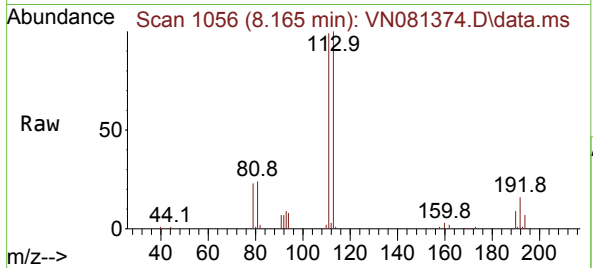




#35
 Dibromofluoromethane
 Concen: 51.055 ug/l
 RT: 8.165 min Scan# 1066
 Delta R.T. 0.000 min
 Lab File: VN081374.D
 Acq: 12 Mar 2024 15:50

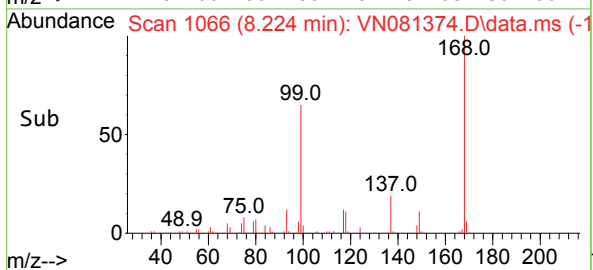
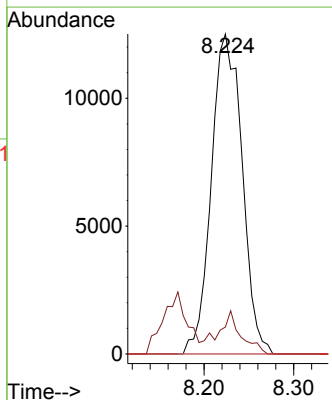
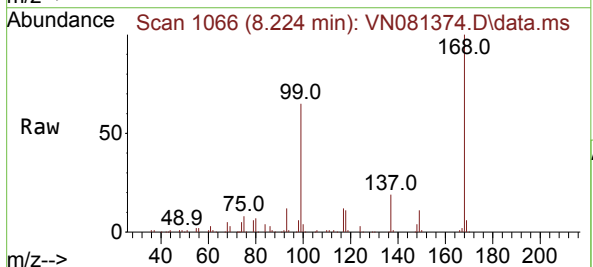
Instrument : MSVOA_N
 ClientSampleId : 1339

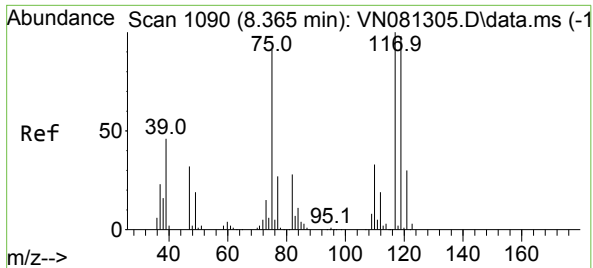
Tgt Ion	Resp	Lower	Upper
113	180195		
113	100		
111	103.1	82.2	123.4
192	16.1	12.5	18.7



#36
 1,1-Dichloropropene
 Concen: 5.228 ug/l
 RT: 8.224 min Scan# 1066
 Delta R.T. -0.153 min
 Lab File: VN081374.D
 Acq: 12 Mar 2024 15:50

Tgt Ion	Resp	Lower	Upper
75	29767		
75	100		
110	9.6	16.0	48.0#
77	0.0	25.8	38.6#

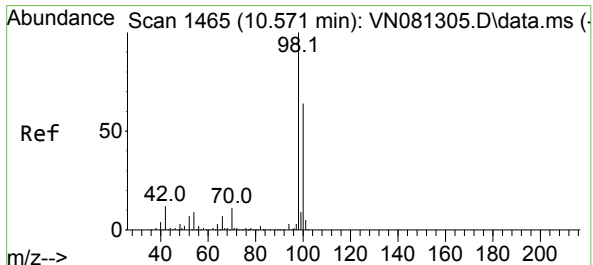
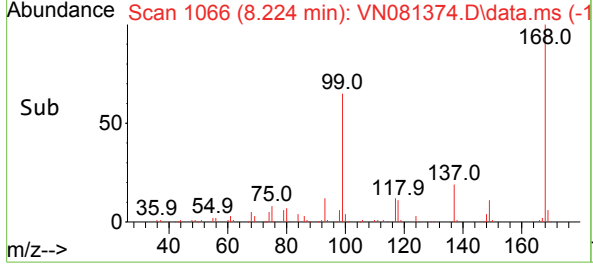
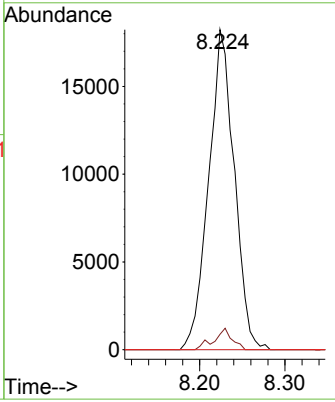
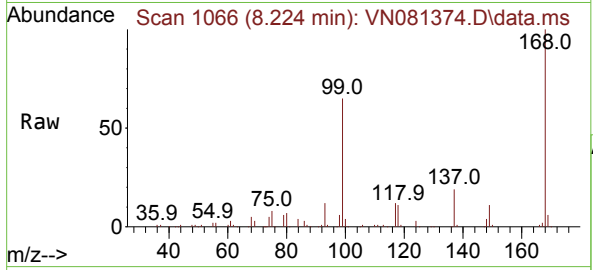




#38
 Carbon Tetrachloride
 Concen: 6.635 ug/l
 RT: 8.224 min Scan# 1066
 Delta R.T. -0.141 min
 Lab File: VN081374.D
 Acq: 12 Mar 2024 15:50

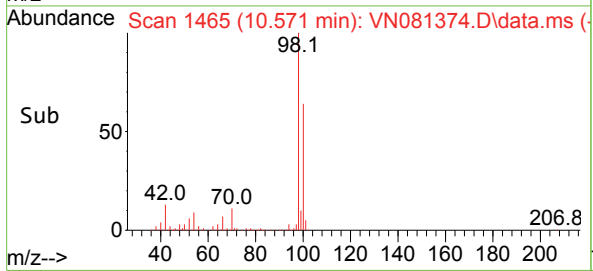
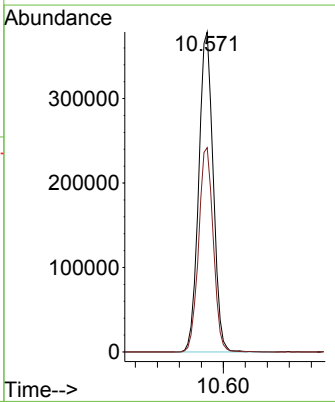
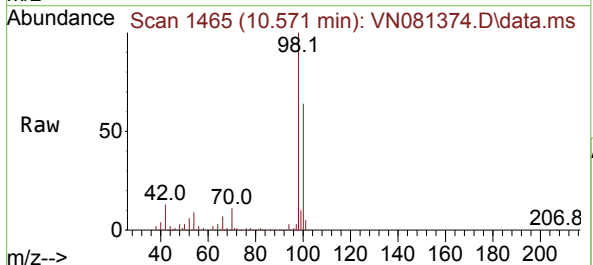
Instrument : MSVOA_N
 ClientSampleId : 1339

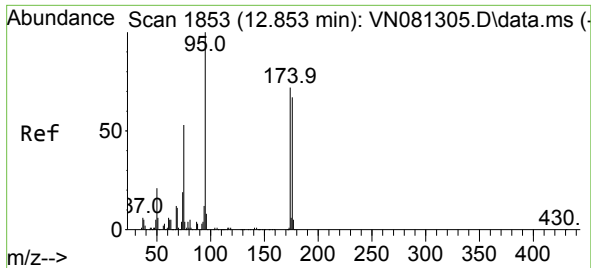
Tgt Ion	Resp	Lower	Upper
117	38022		
119	4.8	73.4	110.2#
121	0.0	24.4	36.6#



#50
 Toluene-d8
 Concen: 52.415 ug/l
 RT: 10.571 min Scan# 1465
 Delta R.T. 0.000 min
 Lab File: VN081374.D
 Acq: 12 Mar 2024 15:50

Tgt Ion	Resp	Lower	Upper
98	691544		
98	100		
100	64.5	51.4	77.0



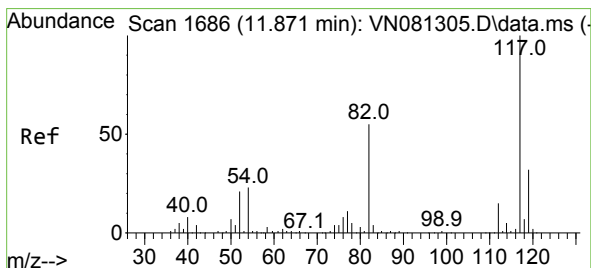
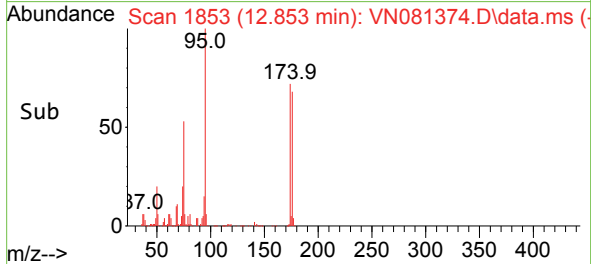
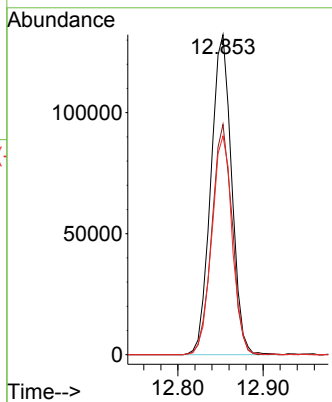
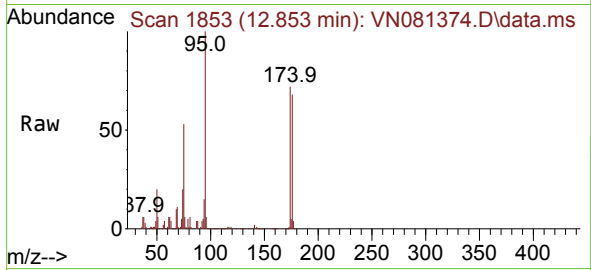


#62
 4-Bromofluorobenzene
 Concen: 47.923 ug/l
 RT: 12.853 min Scan# 1853
 Delta R.T. 0.000 min
 Lab File: VN081374.D
 Acq: 12 Mar 2024 15:50

Instrument : MSVOA_N
 ClientSampleId : 1339

Tgt Ion: 95 Resp: 223475

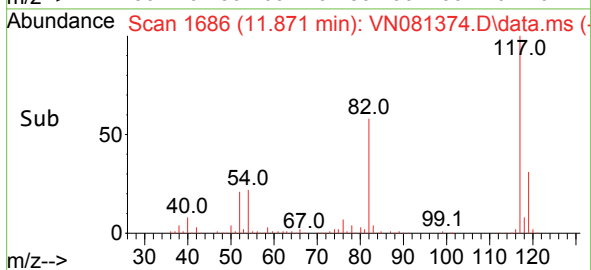
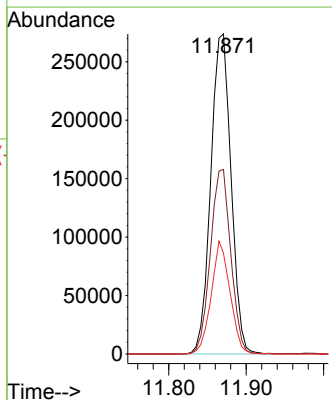
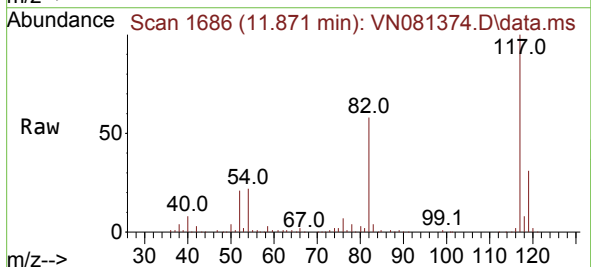
Ion	Ratio	Lower	Upper
95	100		
174	70.3	0.0	120.4
176	67.7	0.0	121.0

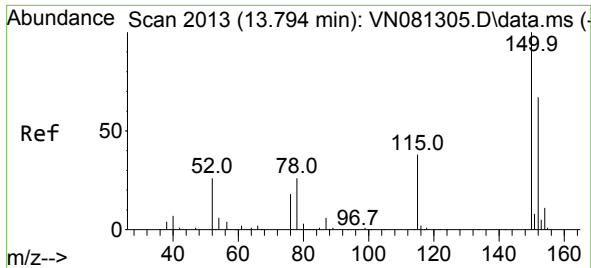


#63
 Chlorobenzene-d5
 Concen: 50.000 ug/l
 RT: 11.871 min Scan# 1686
 Delta R.T. 0.000 min
 Lab File: VN081374.D
 Acq: 12 Mar 2024 15:50

Tgt Ion: 117 Resp: 498156

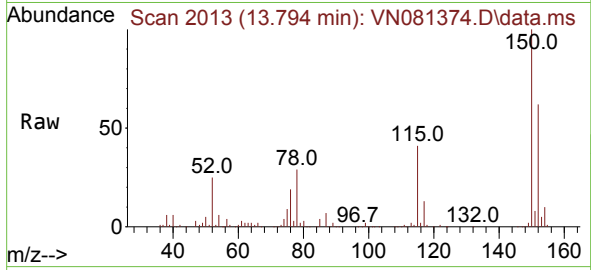
Ion	Ratio	Lower	Upper
117	100		
82	57.6	52.7	79.1
119	31.5	25.3	37.9



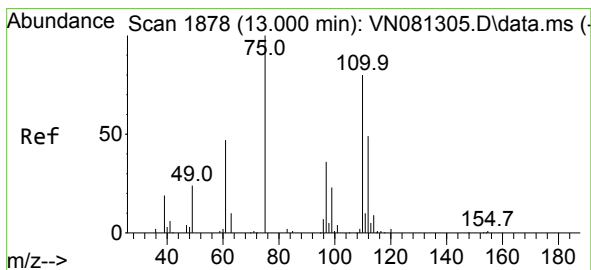
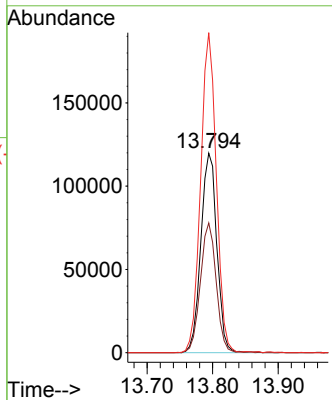
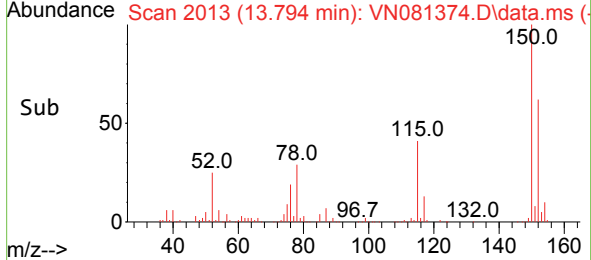


#72
 1,4-Dichlorobenzene-d4
 Concen: 50.000 ug/l
 RT: 13.794 min Scan# 2013
 Delta R.T. 0.000 min
 Lab File: VN081374.D
 Acq: 12 Mar 2024 15:50

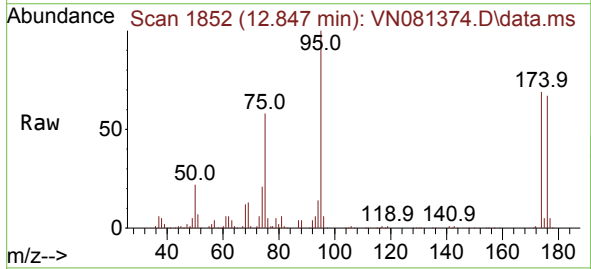
Instrument : MSVOA_N
 ClientSampleId : 1339



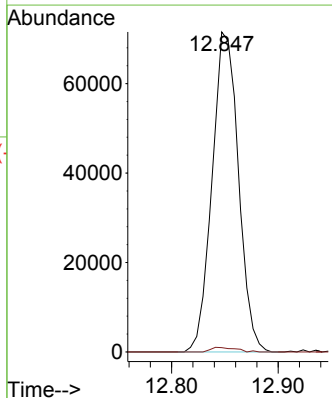
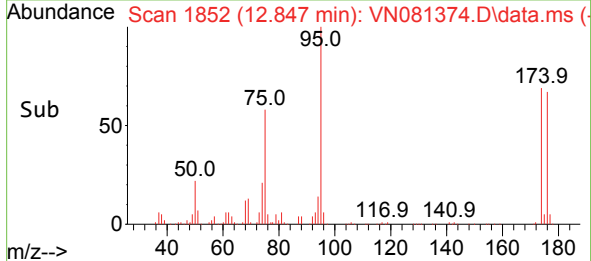
Tgt Ion:152 Resp: 203989
 Ion Ratio Lower Upper
 152 100
 115 64.2 32.3 96.8
 150 156.5 0.0 339.8

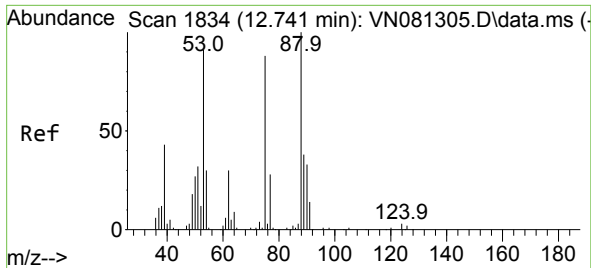


#76
 1,2,3-Trichloropropane
 Concen: 25.519 ug/l
 RT: 12.847 min Scan# 1852
 Delta R.T. -0.153 min
 Lab File: VN081374.D
 Acq: 12 Mar 2024 15:50



Tgt Ion: 75 Resp: 122954
 Ion Ratio Lower Upper
 75 100
 77 1.4 91.0 272.8#

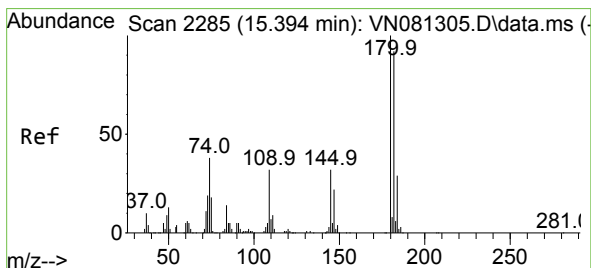
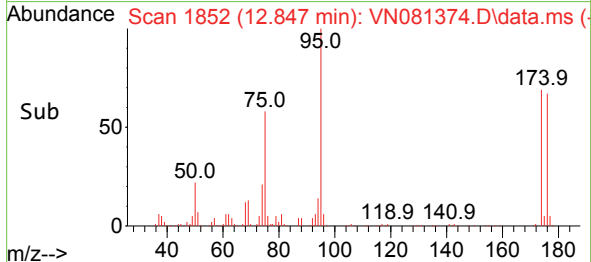
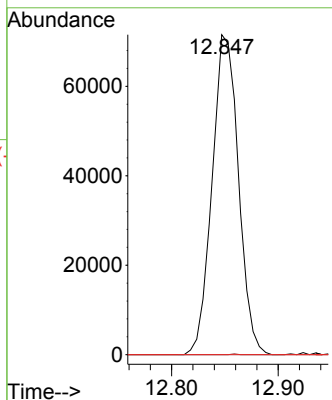
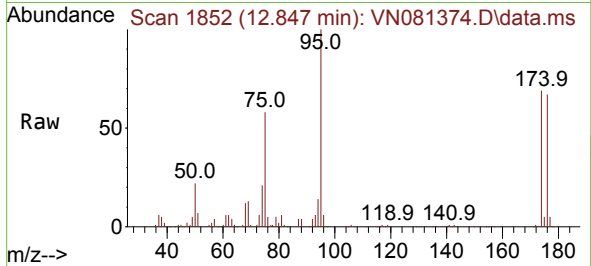




#81
 trans-1,4-Dichloro-2-butene
 Concen: 71.219 ug/l
 RT: 12.847 min Scan# 11339
 Delta R.T. 0.106 min
 Lab File: VN081374.D
 Acq: 12 Mar 2024 15:50

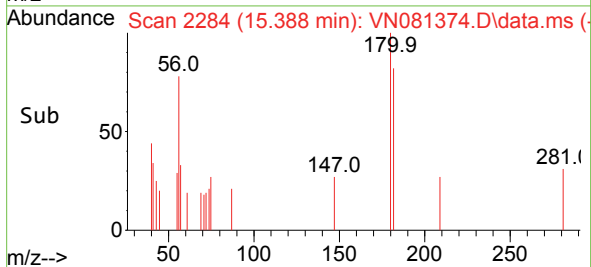
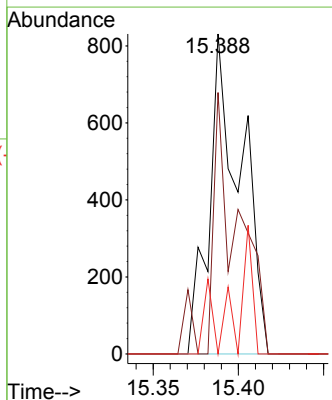
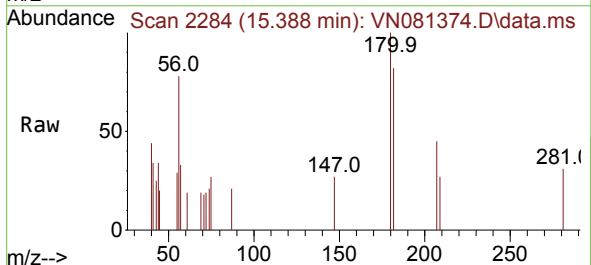
Instrument : MSVOA_N
 ClientSampleId : 1339

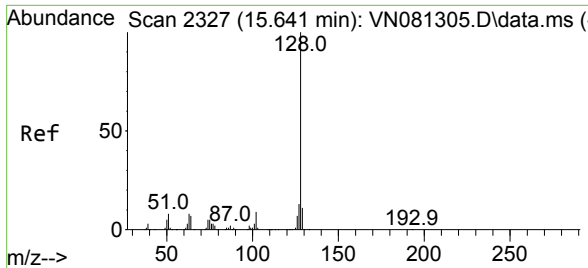
Tgt Ion: 75 Resp: 122954
 Ion Ratio Lower Upper
 75 100
 53 0.1 71.4 107.2#
 89 0.0 33.4 50.0#



#93
 1,2,4-Trichlorobenzene
 Concen: 0.285 ug/l
 RT: 15.388 min Scan# 2284
 Delta R.T. -0.006 min
 Lab File: VN081374.D
 Acq: 12 Mar 2024 15:50

Tgt Ion:180 Resp: 1078
 Ion Ratio Lower Upper
 180 100
 182 65.6 46.6 139.7
 145 6.4 16.8 50.3#





#95
 Naphthalene
 Concen: 0.203 ug/l
 RT: 15.647 min Scan# 21
 Delta R.T. 0.006 min
 Lab File: VN081374.D
 Acq: 12 Mar 2024 15:50

Instrument : MSVOA_N
 ClientSampleId : 1339

Tgt Ion:128 Resp: 2737

Ion	Ratio	Lower	Upper
128	100		
127	2.3	10.0	15.0#
129	2.1	8.7	13.1#

