

Data Path : Z:\voasrv\HPCHEM1\MSVOA_N\Data\VN031224\
 Data File : VN081381.D
 Acq On : 12 Mar 2024 18:38
 Operator : JC\MD
 Sample : P1734-03 10X
 Misc : 5.0mL/MSVOA_N/WATER
 ALS Vial : 17 Sample Multiplier: 1

Instrument :
 MSVOA_N
 ClientSampleId :
 1340

Quant Time: Mar 13 04:56:08 2024
 Quant Method : Z:\voasrv\HPCHEM1\MSVOA_N\methods\82N030524W.M
 Quant Title : SW846 8260
 QLast Update : Wed Mar 06 03:12:57 2024
 Response via : Initial Calibration

Compound	R.T.	QIon	Response	Conc	Units	Dev(Min)

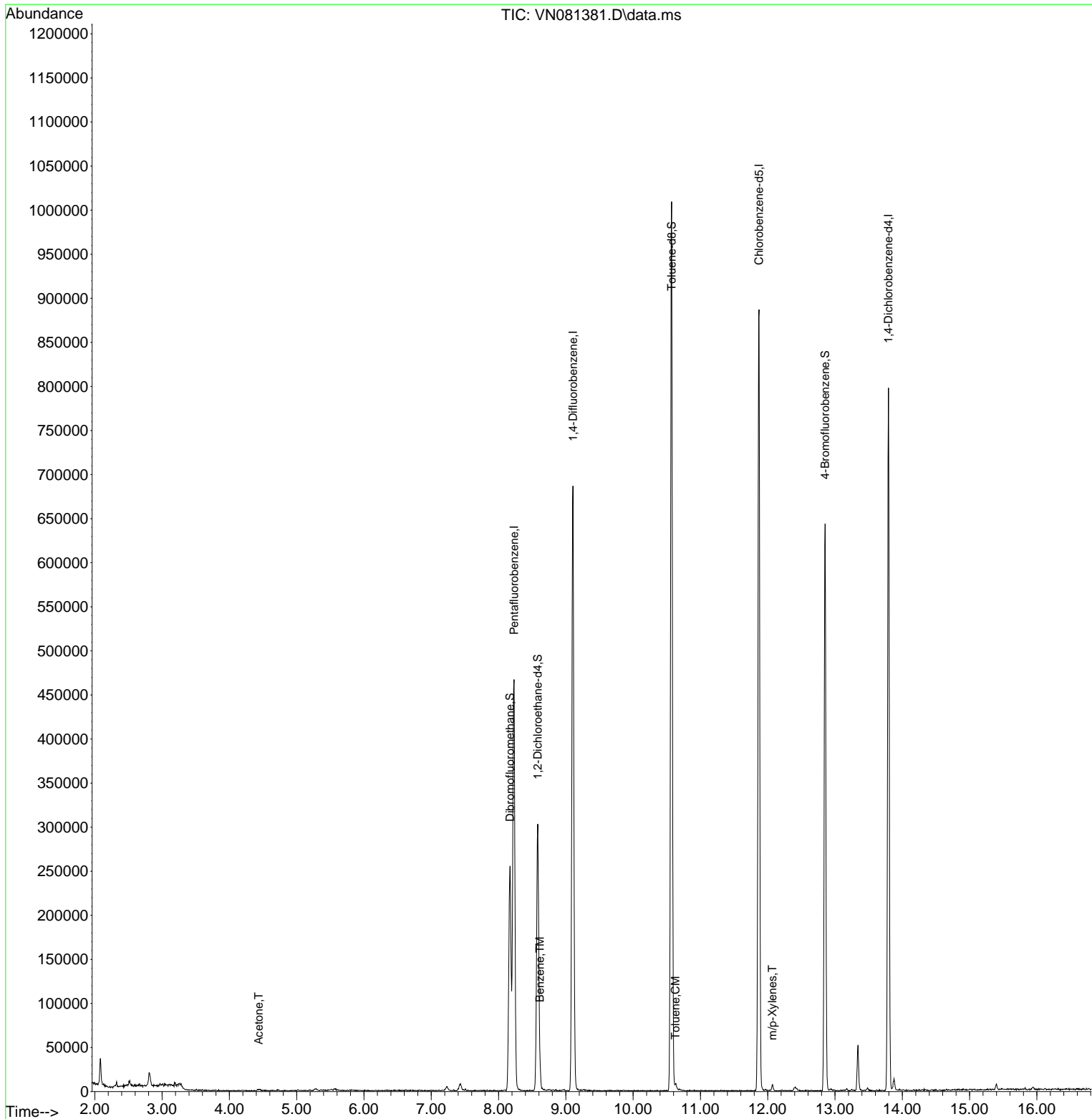
Internal Standards						
1) Pentafluorobenzene	8.230	168	315166	50.000	ug/l	0.00
34) 1,4-Difluorobenzene	9.106	114	574080	50.000	ug/l	0.00
63) Chlorobenzene-d5	11.871	117	506969	50.000	ug/l	0.00
72) 1,4-Dichlorobenzene-d4	13.794	152	198214	50.000	ug/l	0.00
System Monitoring Compounds						
33) 1,2-Dichloroethane-d4	8.583	65	234914	51.551	ug/l	0.00
Spiked Amount	50.000	Range 74 - 125	Recovery	=	103.100%	
35) Dibromofluoromethane	8.171	113	181872	51.709	ug/l	0.00
Spiked Amount	50.000	Range 75 - 124	Recovery	=	103.420%	
50) Toluene-d8	10.571	98	679977	51.717	ug/l	0.00
Spiked Amount	50.000	Range 86 - 113	Recovery	=	103.440%	
62) 4-Bromofluorobenzene	12.853	95	217283	46.757	ug/l	0.00
Spiked Amount	50.000	Range 64 - 133	Recovery	=	93.520%	
Target Compounds						
						Qvalue
16) Acetone	4.436	43	3442	2.132	ug/l	89
40) Benzene	8.612	78	15366	0.907	ug/l #	87
52) Toluene	10.630	92	2823	0.276	ug/l	91
68) m/p-Xylenes	12.071	106	1808	0.250	ug/l	97

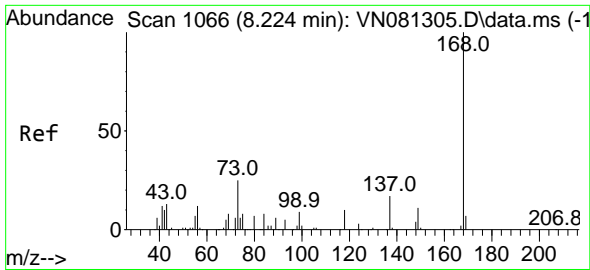
(#) = qualifier out of range (m) = manual integration (+) = signals summed

Data Path : Z:\voasrv\HPCHEM1\MSVOA_N\Data\VN031224\
 Data File : VN081381.D
 Acq On : 12 Mar 2024 18:38
 Operator : JC\MD
 Sample : P1734-03 10X
 Misc : 5.0mL/MSVOA_N/WATER
 ALS Vial : 17 Sample Multiplier: 1

Instrument :
 MSVOA_N
 ClientSampleId :
 1340

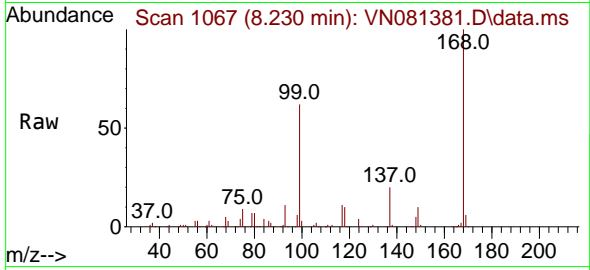
Quant Time: Mar 13 04:56:08 2024
 Quant Method : Z:\voasrv\HPCHEM1\MSVOA_N\methods\82N030524W.M
 Quant Title : SW846 8260
 QLast Update : Wed Mar 06 03:12:57 2024
 Response via : Initial Calibration



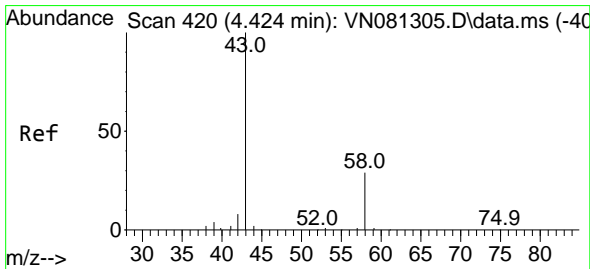
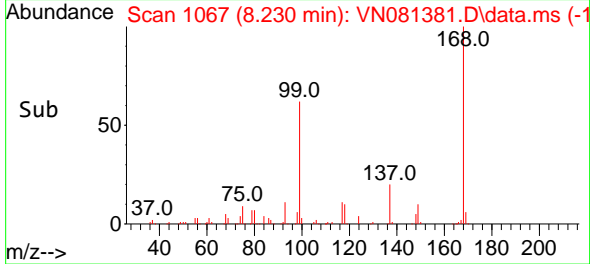
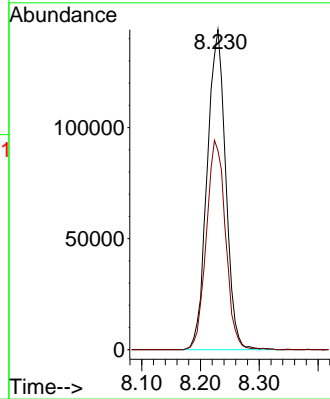


#1
 Pentafluorobenzene
 Concen: 50.000 ug/l
 RT: 8.230 min Scan# 1066
 Delta R.T. 0.006 min
 Lab File: VN081381.D
 Acq: 12 Mar 2024 18:38

Instrument : MSVOA_N
 ClientSampleId : 1340

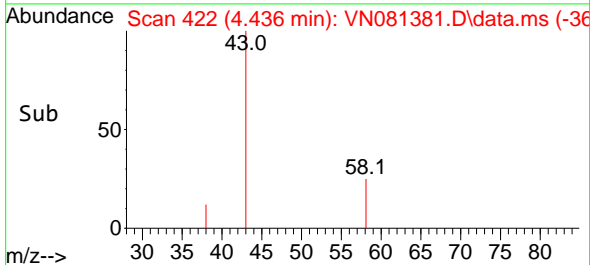
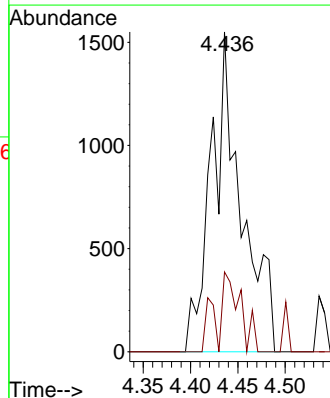
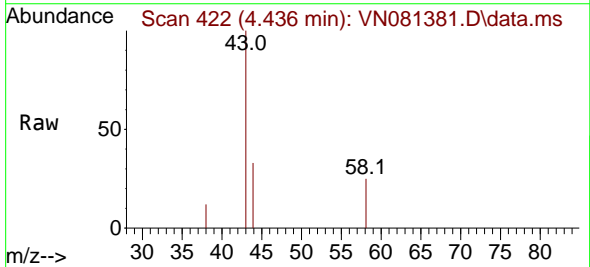


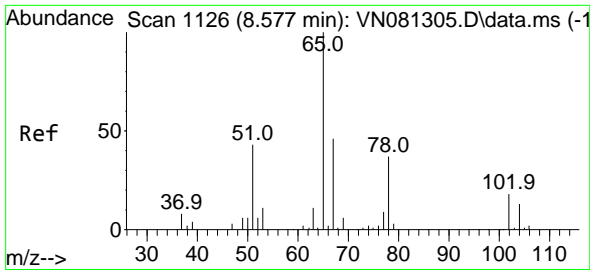
Tgt Ion:168 Resp: 315166
 Ion Ratio Lower Upper
 168 100
 99 62.2 59.9 89.9



#16
 Acetone
 Concen: 2.132 ug/l
 RT: 4.436 min Scan# 422
 Delta R.T. 0.012 min
 Lab File: VN081381.D
 Acq: 12 Mar 2024 18:38

Tgt Ion: 43 Resp: 3442
 Ion Ratio Lower Upper
 43 100
 58 25.0 24.8 37.2

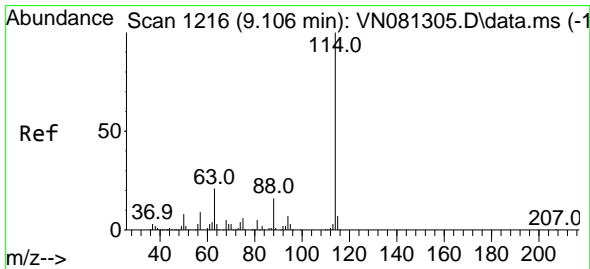
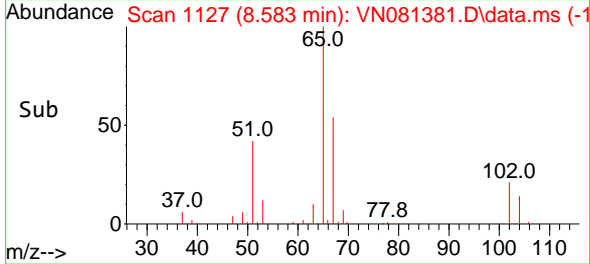
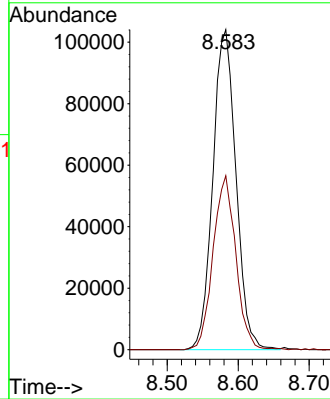
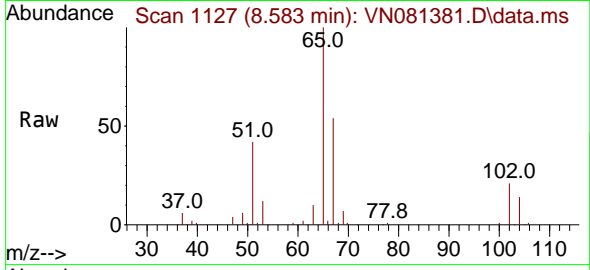




#33
 1,2-Dichloroethane-d4
 Concen: 51.551 ug/l
 RT: 8.583 min Scan# 1127
 Delta R.T. 0.006 min
 Lab File: VN081381.D
 Acq: 12 Mar 2024 18:38

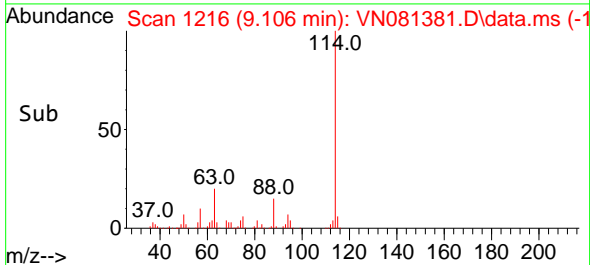
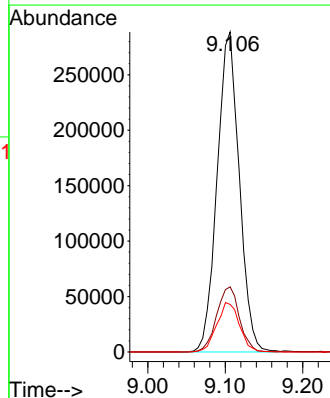
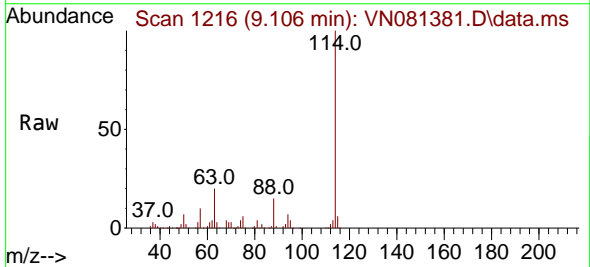
Instrument :
 MSVOA_N
 ClientSampleId :
 1340

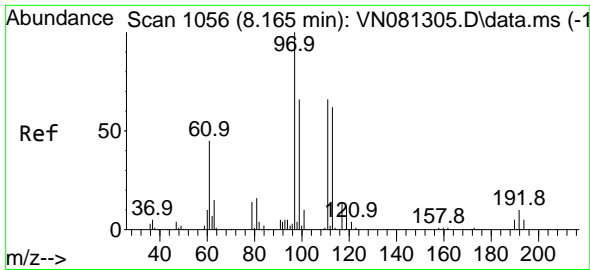
Tgt Ion: 65 Resp: 234914
 Ion Ratio Lower Upper
 65 100
 67 53.5 0.0 102.4



#34
 1,4-Difluorobenzene
 Concen: 50.000 ug/l
 RT: 9.106 min Scan# 1216
 Delta R.T. 0.000 min
 Lab File: VN081381.D
 Acq: 12 Mar 2024 18:38

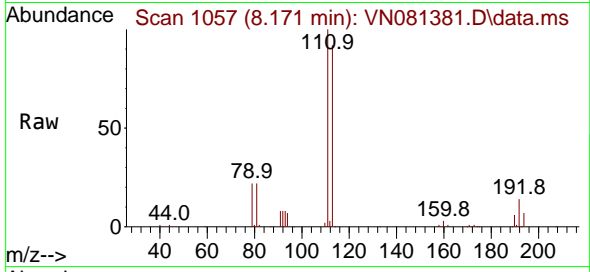
Tgt Ion: 114 Resp: 574080
 Ion Ratio Lower Upper
 114 100
 63 20.4 0.0 48.0
 88 14.8 0.0 34.8



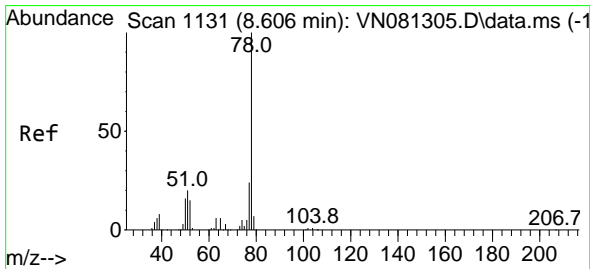
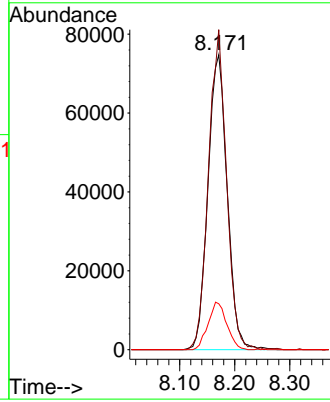
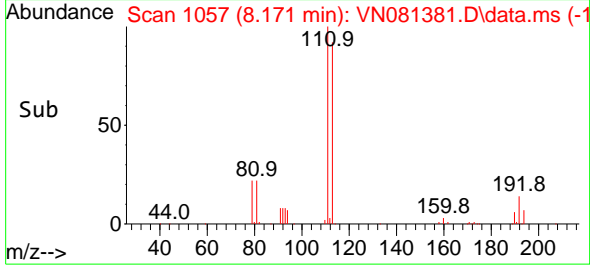


#35
 Dibromofluoromethane
 Concen: 51.709 ug/l
 RT: 8.171 min Scan# 1057
 Delta R.T. 0.006 min
 Lab File: VN081381.D
 Acq: 12 Mar 2024 18:38

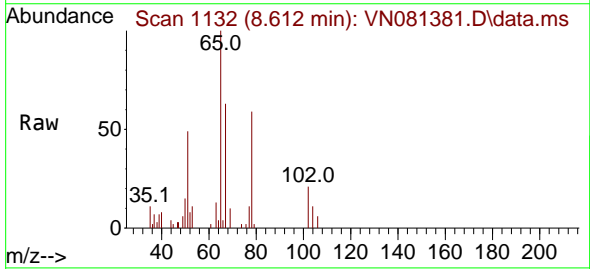
Instrument : MSVOA_N
 ClientSampleId : 1340



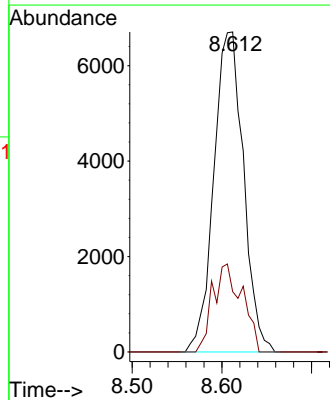
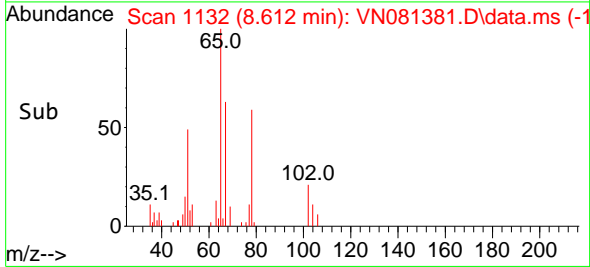
Tgt Ion:113 Resp: 181872
 Ion Ratio Lower Upper
 113 100
 111 101.8 82.2 123.4
 192 15.6 12.5 18.7

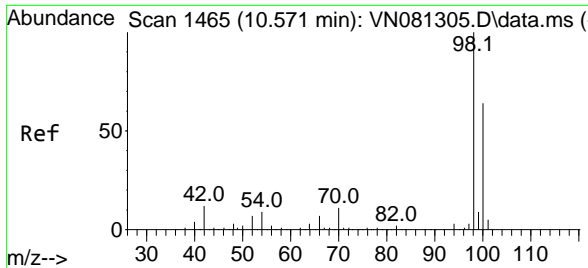


#40
 Benzene
 Concen: 0.907 ug/l
 RT: 8.612 min Scan# 1132
 Delta R.T. 0.006 min
 Lab File: VN081381.D
 Acq: 12 Mar 2024 18:38



Tgt Ion: 78 Resp: 15366
 Ion Ratio Lower Upper
 78 100
 77 18.9 20.4 30.6#

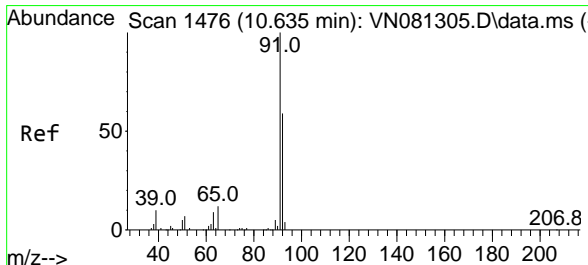
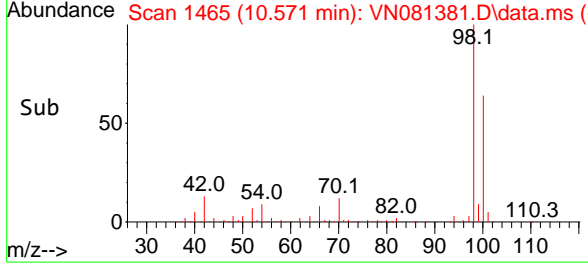
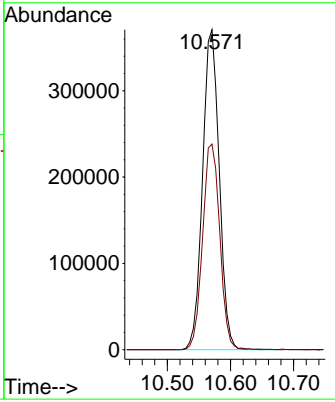
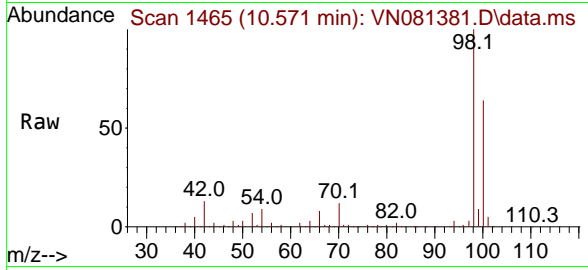




#50
 Toluene-d8
 Concen: 51.717 ug/l
 RT: 10.571 min Scan# 1465
 Delta R.T. 0.000 min
 Lab File: VN081381.D
 Acq: 12 Mar 2024 18:38

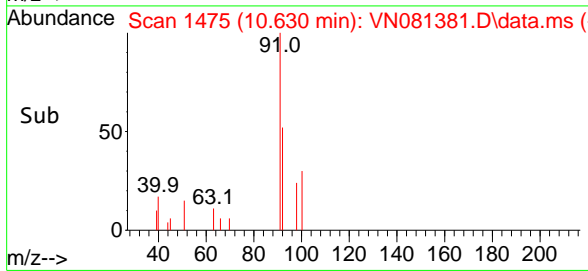
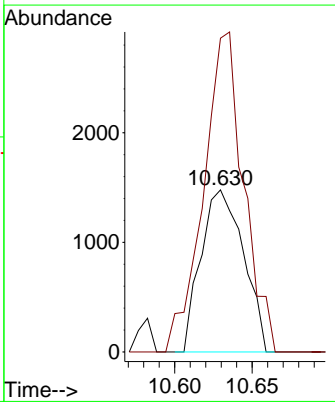
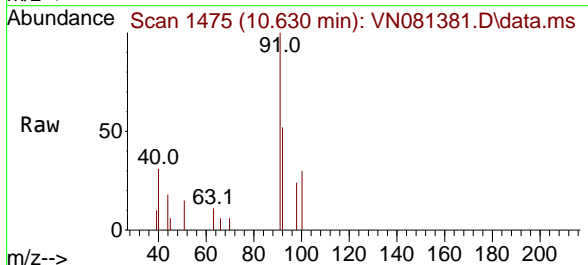
Instrument : MSVOA_N
 ClientSampleId : 1340

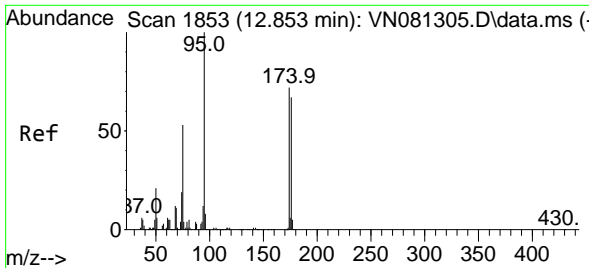
Tgt Ion: 98 Resp: 679977
 Ion Ratio Lower Upper
 98 100
 100 66.1 51.4 77.0



#52
 Toluene
 Concen: 0.276 ug/l
 RT: 10.630 min Scan# 1475
 Delta R.T. -0.006 min
 Lab File: VN081381.D
 Acq: 12 Mar 2024 18:38

Tgt Ion: 92 Resp: 2823
 Ion Ratio Lower Upper
 92 100
 91 186.2 139.4 209.0

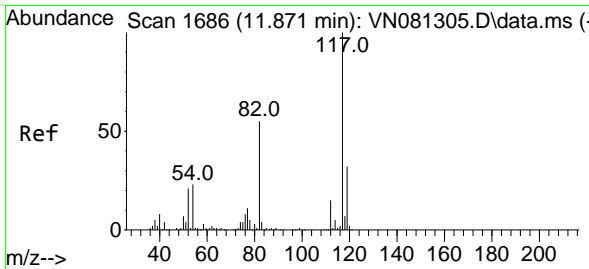
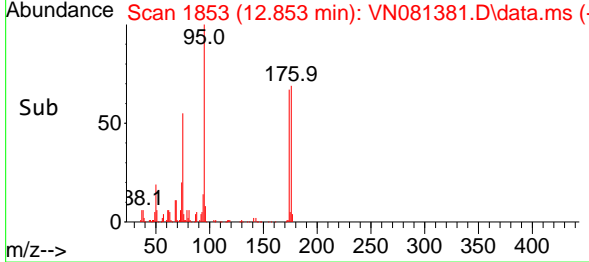
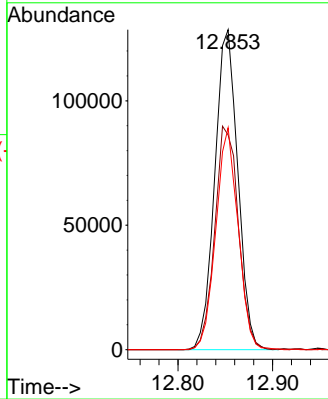
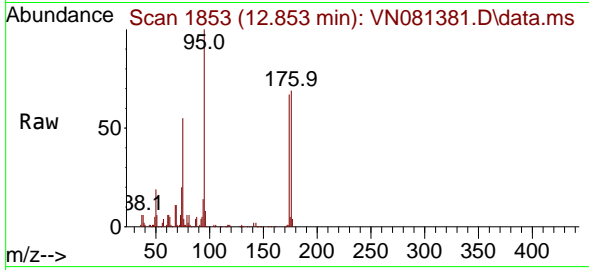




#62
 4-Bromofluorobenzene
 Concen: 46.757 ug/l
 RT: 12.853 min Scan# 1853
 Delta R.T. 0.000 min
 Lab File: VN081381.D
 Acq: 12 Mar 2024 18:38

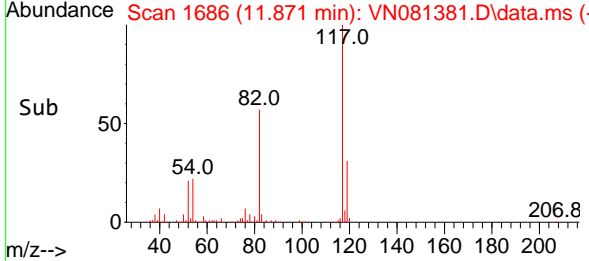
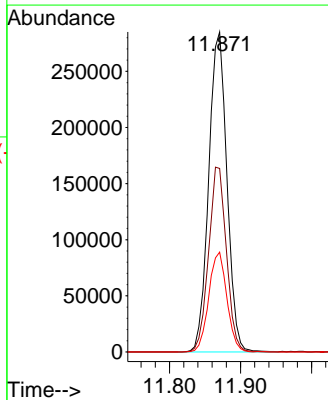
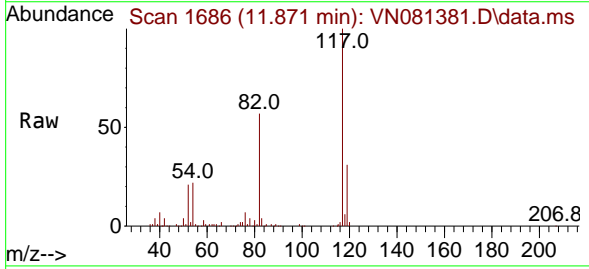
Instrument : MSVOA_N
 ClientSampleId : 1340

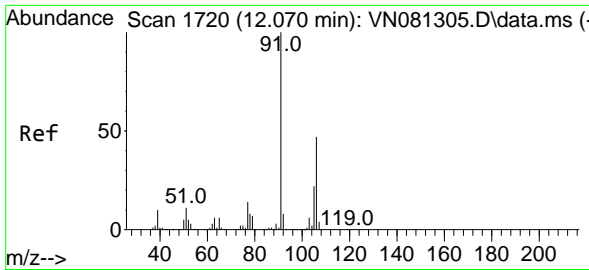
Tgt Ion	Resp	Ion Ratio	Lower	Upper
95	217283	100		
174	71.8	0.0	0.0	120.4
176	67.0	0.0	0.0	121.0



#63
 Chlorobenzene-d5
 Concen: 50.000 ug/l
 RT: 11.871 min Scan# 1686
 Delta R.T. 0.000 min
 Lab File: VN081381.D
 Acq: 12 Mar 2024 18:38

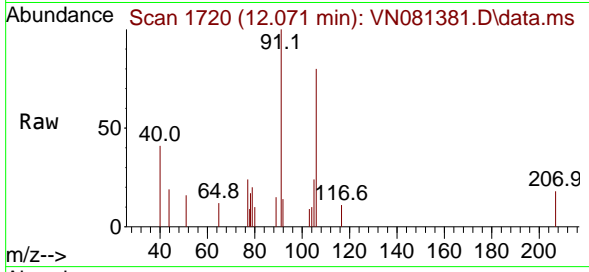
Tgt Ion	Resp	Ion Ratio	Lower	Upper
117	506969	100		
82	57.4	52.7	52.7	79.1
119	31.2	25.3	25.3	37.9



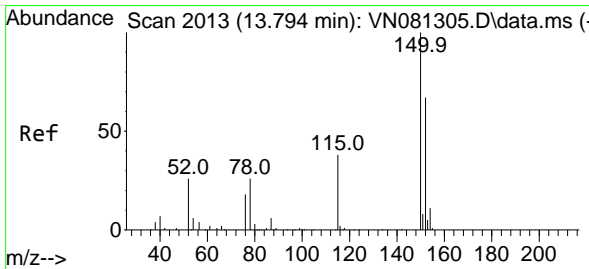
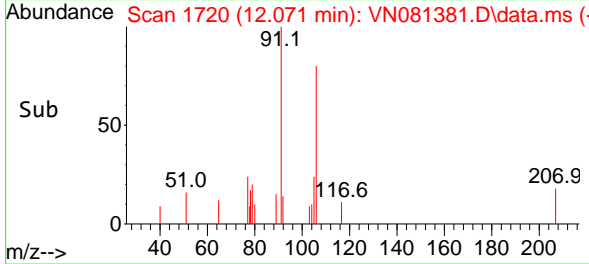
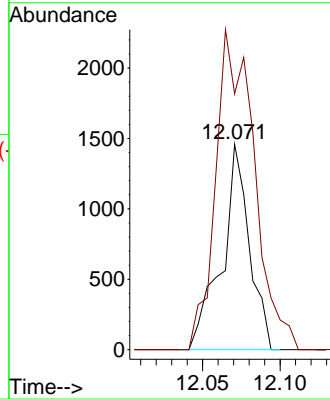


#68
 m/p-Xylenes
 Concen: 0.250 ug/l
 RT: 12.071 min Scan# 11
 Delta R.T. 0.000 min
 Lab File: VN081381.D
 Acq: 12 Mar 2024 18:38

Instrument :
 MSVOA_N
 ClientSampleId :
 1340



Tgt Ion:106 Resp: 1808
 Ion Ratio Lower Upper
 106 100
 91 216.6 169.0 253.6



#72
 1,4-Dichlorobenzene-d4
 Concen: 50.000 ug/l
 RT: 13.794 min Scan# 2013
 Delta R.T. 0.000 min
 Lab File: VN081381.D
 Acq: 12 Mar 2024 18:38

Tgt Ion:152 Resp: 198214
 Ion Ratio Lower Upper
 152 100
 115 64.7 32.3 96.8
 150 159.2 0.0 339.8

