

Data Path : Z:\voasrv\HPCHEM1\MSVOA\_N\Data\VN031225\  
 Data File : VN085960.D  
 Acq On : 12 Mar 2025 15:19  
 Operator : JC\MD  
 Sample : Q1528-03 50X  
 Misc : 5.0mL/MSVOA\_N/WATER  
 ALS Vial : 9 Sample Multiplier: 1

**Instrument :**  
 MSVOA\_N  
**ClientSampleId :**  
 22425

Quant Time: Mar 13 02:18:58 2025  
 Quant Method : Z:\voasrv\HPCHEM1\MSVOA\_N\methods\82N021825W.M  
 Quant Title : SW846 8260  
 QLast Update : Wed Feb 19 03:43:32 2025  
 Response via : Initial Calibration

Compound	R.T.	QIon	Response	Conc	Units	Dev(Min)
Internal Standards						
1) Pentafluorobenzene	7.871	168	141807m	50.000	ug/l	-0.35
34) 1,4-Difluorobenzene	8.859	114	262368	50.000	ug/l	-0.24
63) Chlorobenzene-d5	11.812	117	220367m	50.000	ug/l	-0.05
72) 1,4-Dichlorobenzene-d4	13.776	152	82887	50.000	ug/l	-0.01
System Monitoring Compounds						
33) 1,2-Dichloroethane-d4	8.253	65	105521	57.396	ug/l	-0.32
Spiked Amount	50.000	Range 74 - 125	Recovery	=	114.800%	
35) Dibromofluoromethane	7.782	113	88935	51.802	ug/l	-0.38
Spiked Amount	50.000	Range 75 - 124	Recovery	=	103.600%	
50) Toluene-d8	10.447	98	292887	46.890	ug/l	-0.11
Spiked Amount	50.000	Range 86 - 113	Recovery	=	93.780%	
62) 4-Bromofluorobenzene	12.823	95	91346m	44.386	ug/l	-0.02
Spiked Amount	50.000	Range 77 - 121	Recovery	=	88.780%	

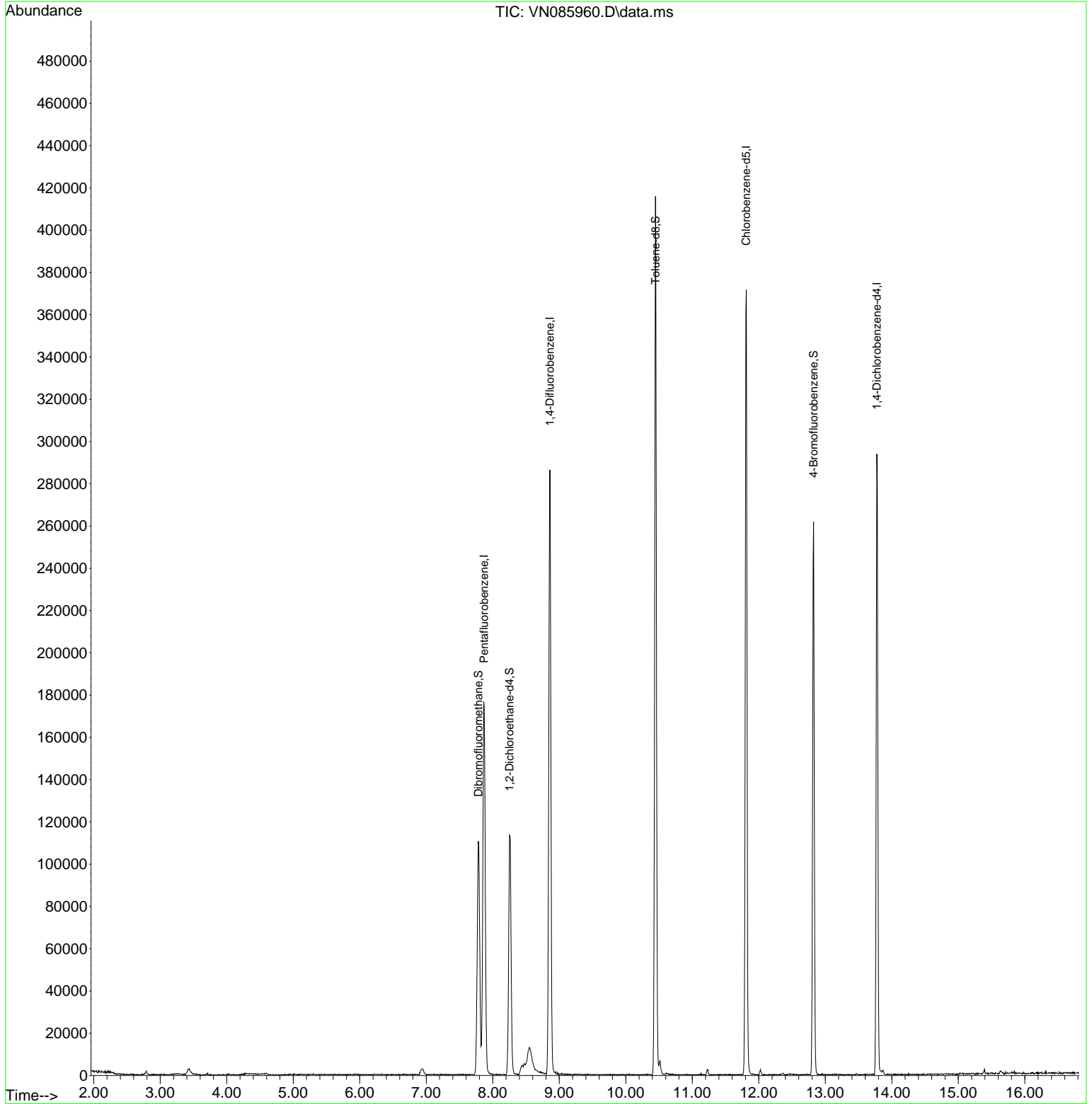
Target Compounds Qvalue

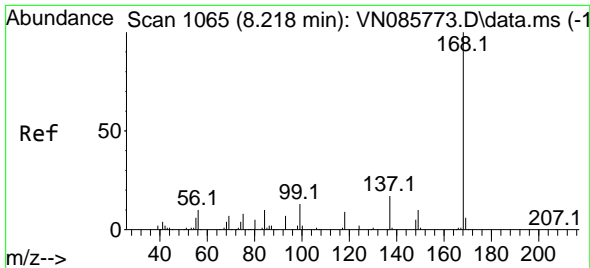
(#) = qualifier out of range (m) = manual integration (+) = signals summed

Data Path : Z:\voasrv\HPCHEM1\MSVOA\_N\Data\VN031225\  
 Data File : VN085960.D  
 Acq On : 12 Mar 2025 15:19  
 Operator : JC\MD  
 Sample : Q1528-03 50X  
 Misc : 5.0mL/MSVOA\_N/WATER  
 ALS Vial : 9 Sample Multiplier: 1

Instrument :  
 MSVOA\_N  
 ClientSampleId :  
 22425

Quant Time: Mar 13 02:18:58 2025  
 Quant Method : Z:\voasrv\HPCHEM1\MSVOA\_N\methods\82N021825W.M  
 Quant Title : SW846 8260  
 QLast Update : Wed Feb 19 03:43:32 2025  
 Response via : Initial Calibration

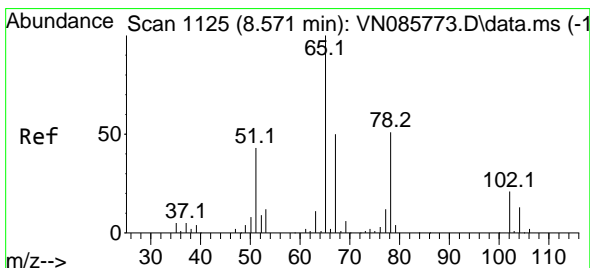
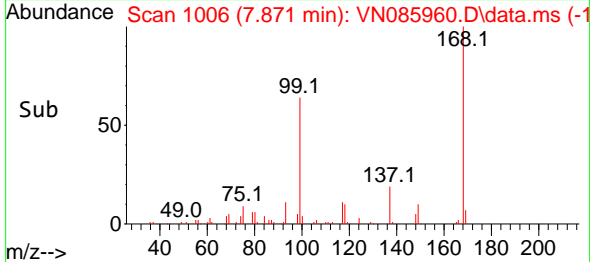
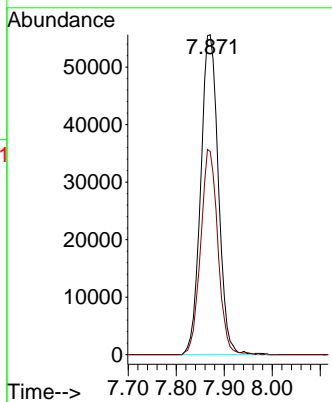
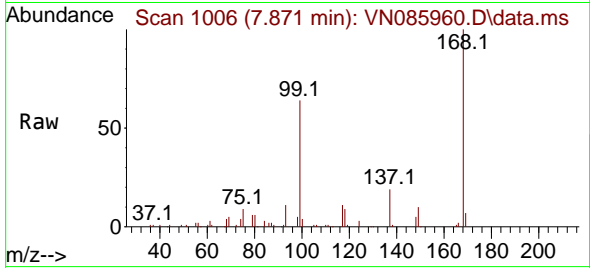




#1  
 Pentafluorobenzene  
 Concen: 50.000 ug/l m  
 RT: 7.871 min Scan# 1071  
 Delta R.T. -0.347 min  
 Lab File: VN085960.D  
 Acq: 12 Mar 2025 15:19

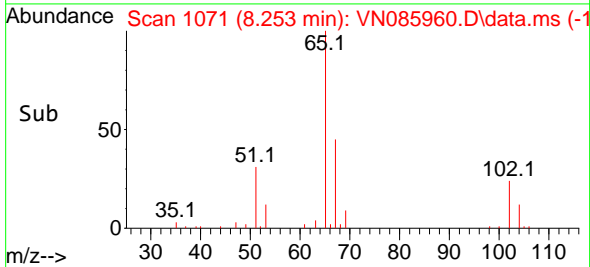
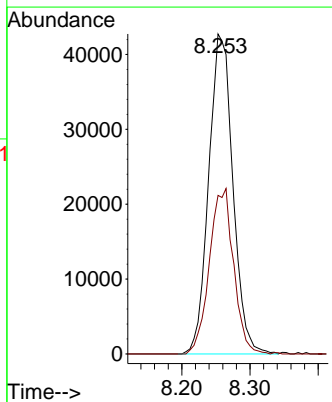
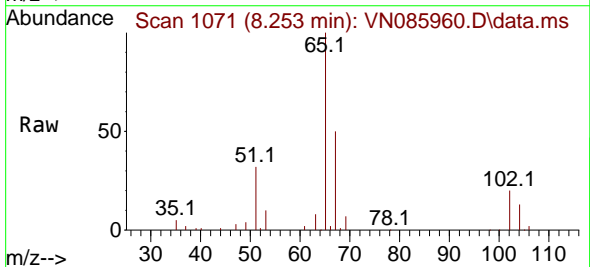
Instrument : MSVOA\_N  
 ClientSampleId : 22425

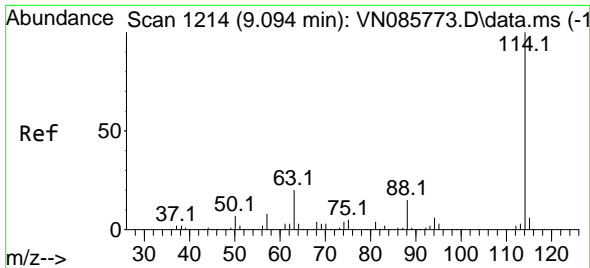
Tgt Ion:168 Resp: 141807  
 Ion Ratio Lower Upper  
 168 100  
 99 63.5 47.9 71.9



#33  
 1,2-Dichloroethane-d4  
 Concen: 57.396 ug/l  
 RT: 8.253 min Scan# 1071  
 Delta R.T. -0.318 min  
 Lab File: VN085960.D  
 Acq: 12 Mar 2025 15:19

Tgt Ion: 65 Resp: 105521  
 Ion Ratio Lower Upper  
 65 100  
 67 51.7 0.0 106.2



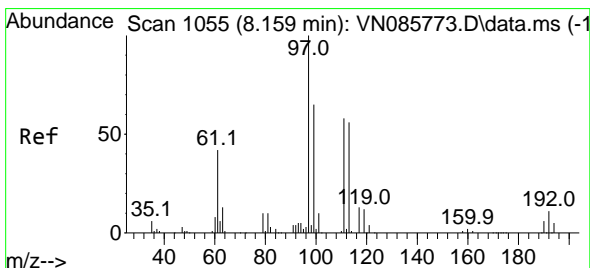
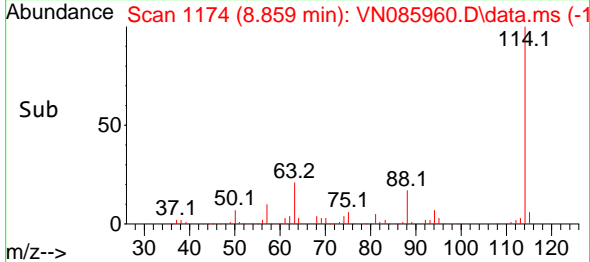
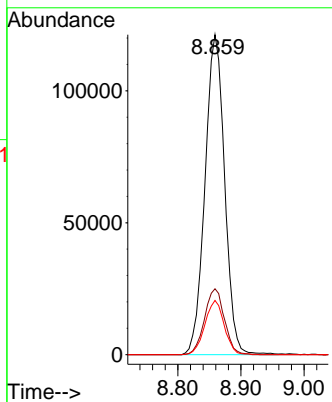
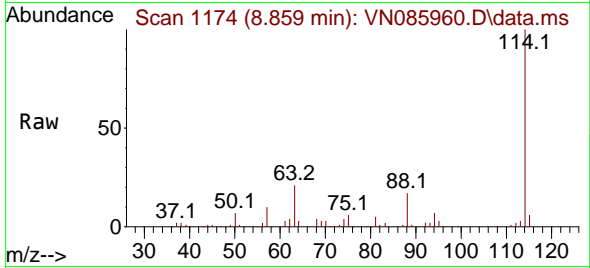


#34  
 1,4-Difluorobenzene  
 Concen: 50.000 ug/l  
 RT: 8.859 min Scan# 1174  
 Delta R.T. -0.235 min  
 Lab File: VN085960.D  
 Acq: 12 Mar 2025 15:19

Instrument : MSVOA\_N  
 ClientSampleId : 22425

Tgt Ion:114 Resp: 262368

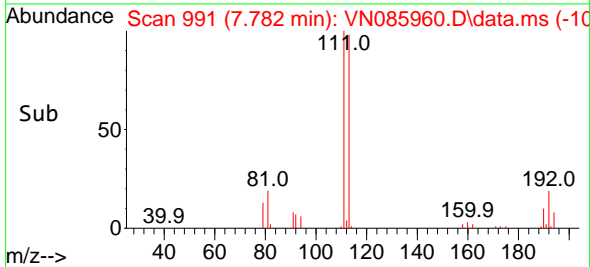
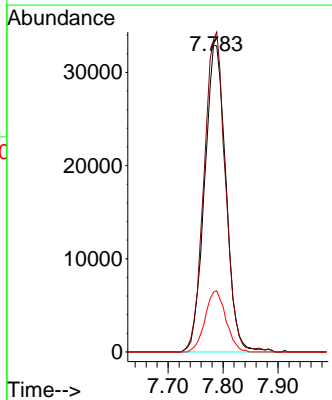
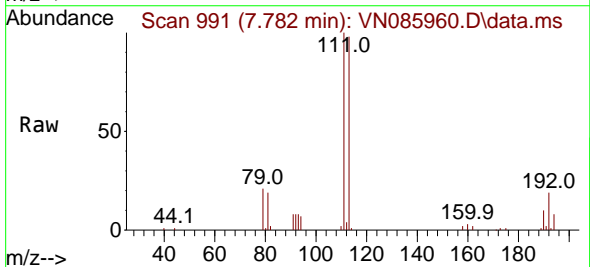
Ion	Ratio	Lower	Upper
114	100		
63	20.6	0.0	39.2
88	17.0	0.0	30.0

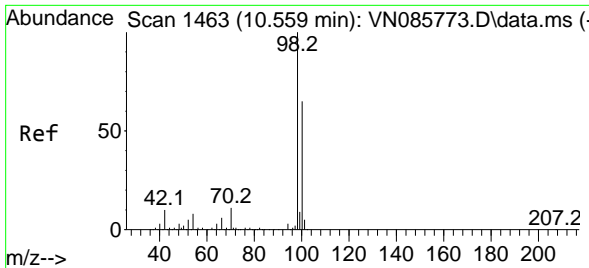


#35  
 Dibromofluoromethane  
 Concen: 51.802 ug/l  
 RT: 7.782 min Scan# 991  
 Delta R.T. -0.377 min  
 Lab File: VN085960.D  
 Acq: 12 Mar 2025 15:19

Tgt Ion:113 Resp: 88935

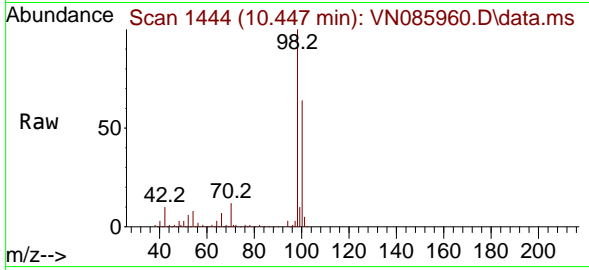
Ion	Ratio	Lower	Upper
113	100		
111	104.2	82.2	123.4
192	19.4	14.7	22.1



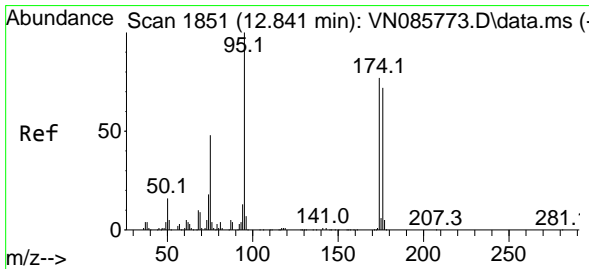
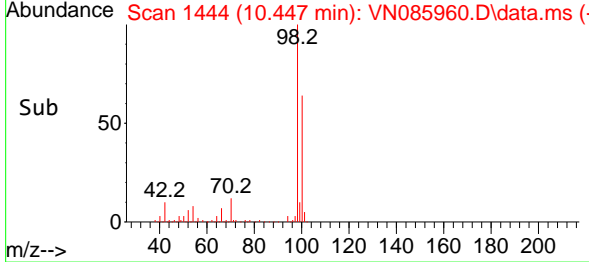
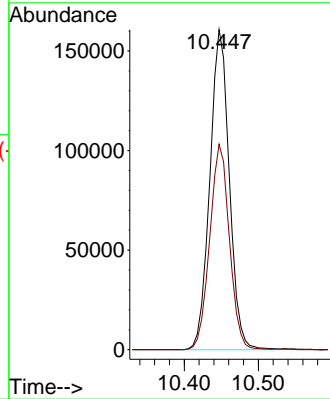


#50  
 Toluene-d8  
 Concen: 46.890 ug/l  
 RT: 10.447 min Scan# 14  
 Delta R.T. -0.112 min  
 Lab File: VN085960.D  
 Acq: 12 Mar 2025 15:19

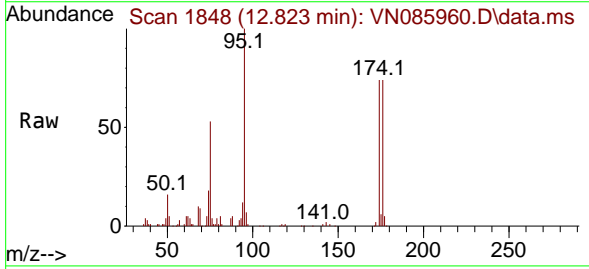
Instrument :  
 MSVOA\_N  
 ClientSampleId :  
 22425



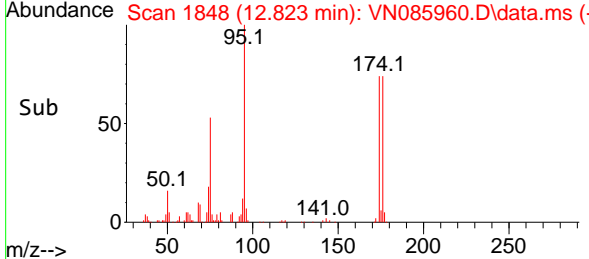
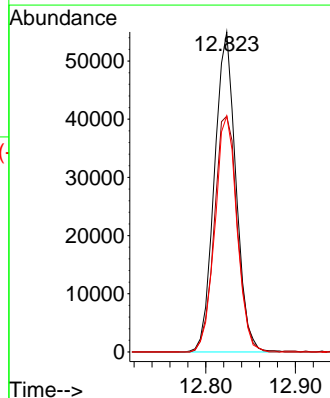
Tgt Ion: 98 Resp: 292887  
 Ion Ratio Lower Upper  
 98 100  
 100 64.9 52.1 78.1

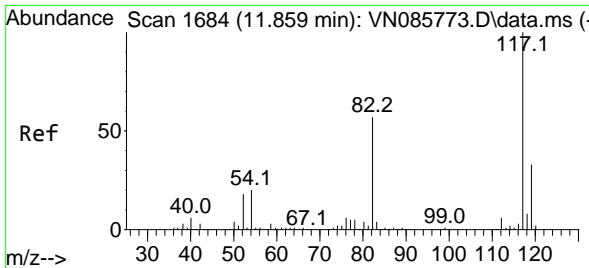


#62  
 4-Bromofluorobenzene  
 Concen: 44.386 ug/l m  
 RT: 12.823 min Scan# 1848  
 Delta R.T. -0.018 min  
 Lab File: VN085960.D  
 Acq: 12 Mar 2025 15:19



Tgt Ion: 95 Resp: 91346  
 Ion Ratio Lower Upper  
 95 100  
 174 0.0 0.0 152.4  
 176 0.0 0.0 146.6



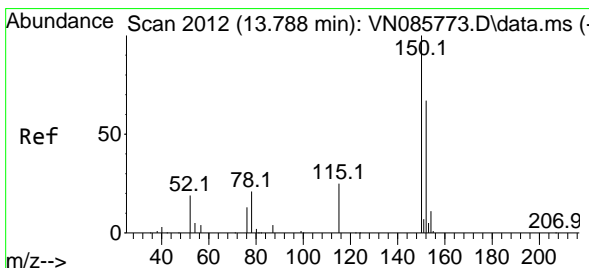
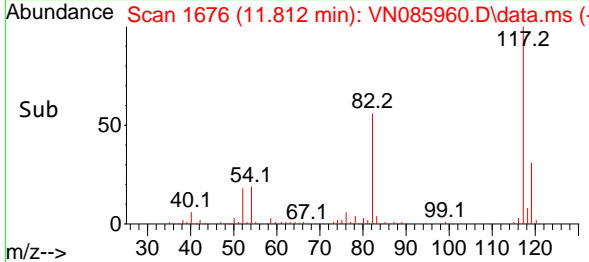
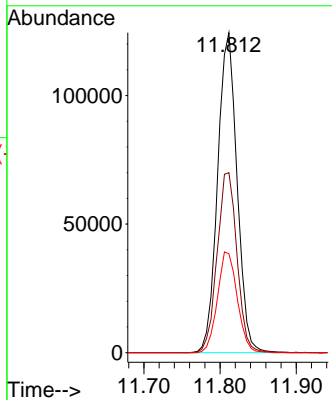
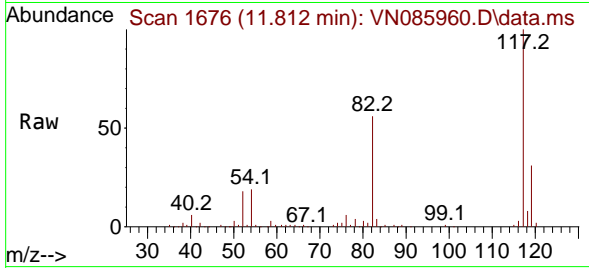


#63  
 Chlorobenzene-d5  
 Concen: 50.000 ug/l m  
 RT: 11.812 min Scan# 1  
 Delta R.T. -0.047 min  
 Lab File: VN085960.D  
 Acq: 12 Mar 2025 15:19

Instrument :  
 MSVOA\_N  
 ClientSampleId :  
 22425

Tgt Ion:117 Resp: 220367

Ion	Ratio	Lower	Upper
117	100		
82	56.3	45.7	68.5
119	30.9	26.2	39.2



#72  
 1,4-Dichlorobenzene-d4  
 Concen: 50.000 ug/l  
 RT: 13.776 min Scan# 2010  
 Delta R.T. -0.012 min  
 Lab File: VN085960.D  
 Acq: 12 Mar 2025 15:19

Tgt Ion:152 Resp: 82887

Ion	Ratio	Lower	Upper
152	100		
115	59.7	30.4	91.3
150	155.1	0.0	345.4

