

Data Path : Z:\voasrv\HPCHEM1\MSVOA\_N\Data\VN031325\  
 Data File : VN085971.D  
 Acq On : 13 Mar 2025 11:14  
 Operator : JC\MD  
 Sample : VN0313MBL01  
 Misc : 5.00g/10mL/100uL/5.00mL/MSVOA\_N/MEOH  
 ALS Vial : 4 Sample Multiplier: 1

**Instrument :**  
 MSVOA\_N  
**ClientSampleId :**  
 VN0313MBL01

Quant Time: Mar 14 00:27:19 2025  
 Quant Method : Z:\voasrv\HPCHEM1\MSVOA\_N\methods\82N021825W.M  
 Quant Title : SW846 8260  
 QLast Update : Wed Feb 19 03:43:32 2025  
 Response via : Initial Calibration

Compound	R.T.	QIon	Response	Conc	Units	Dev(Min)
-----						
Internal Standards						
1) Pentafluorobenzene	8.224	168	137155	50.000	ug/l	0.00
34) 1,4-Difluorobenzene	9.100	114	251620	50.000	ug/l	0.00
63) Chlorobenzene-d5	11.865	117	219283	50.000	ug/l	0.00
72) 1,4-Dichlorobenzene-d4	13.788	152	88994	50.000	ug/l	0.00

System Monitoring Compounds						
33) 1,2-Dichloroethane-d4	8.576	65	110442	62.110	ug/l	0.00
Spiked Amount	50.000	Range	74 - 125	Recovery	=	124.220%
35) Dibromofluoromethane	8.165	113	91448	55.542	ug/l	0.00
Spiked Amount	50.000	Range	75 - 124	Recovery	=	111.080%
50) Toluene-d8	10.565	98	301494	50.330	ug/l	0.00
Spiked Amount	50.000	Range	86 - 113	Recovery	=	100.660%
62) 4-Bromofluorobenzene	12.847	95	89654	45.424	ug/l	0.00
Spiked Amount	50.000	Range	77 - 121	Recovery	=	90.840%

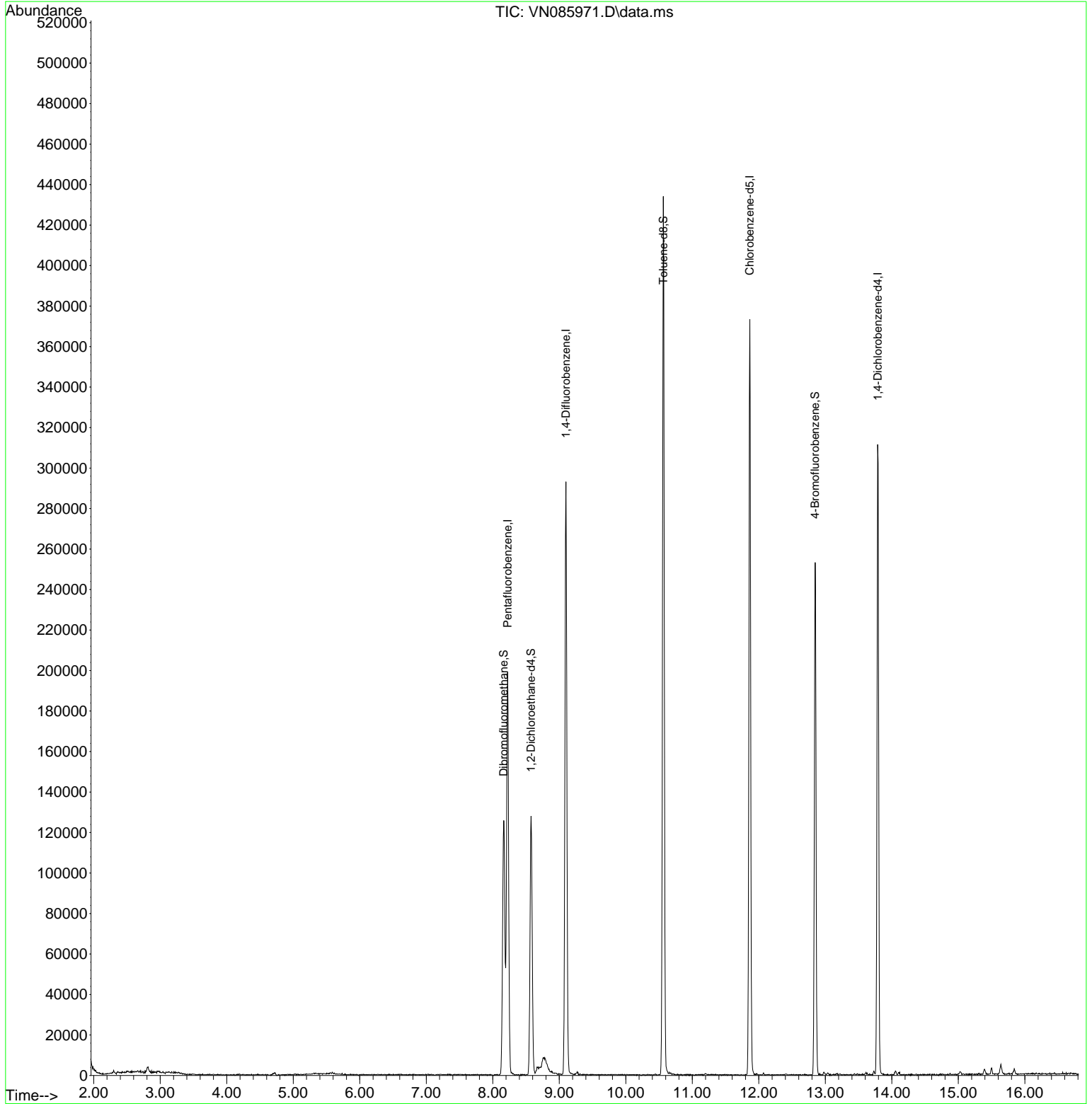
Target Compounds Qvalue  
 -----

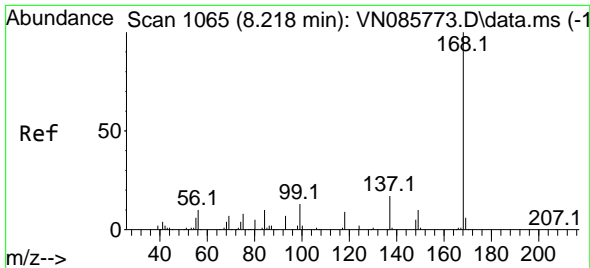
(#) = qualifier out of range (m) = manual integration (+) = signals summed

Data Path : Z:\voasrv\HPCHEM1\MSVOA\_N\Data\VN031325\  
 Data File : VN085971.D  
 Acq On : 13 Mar 2025 11:14  
 Operator : JC\MD  
 Sample : VN0313MBL01  
 Misc : 5.00g/10mL/100uL/5.00mL/MSVOA\_N/MEOH  
 ALS Vial : 4 Sample Multiplier: 1

Instrument :  
 MSVOA\_N  
 ClientSampleId :  
 VN0313MBL01

Quant Time: Mar 14 00:27:19 2025  
 Quant Method : Z:\voasrv\HPCHEM1\MSVOA\_N\methods\82N021825W.M  
 Quant Title : SW846 8260  
 QLast Update : Wed Feb 19 03:43:32 2025  
 Response via : Initial Calibration

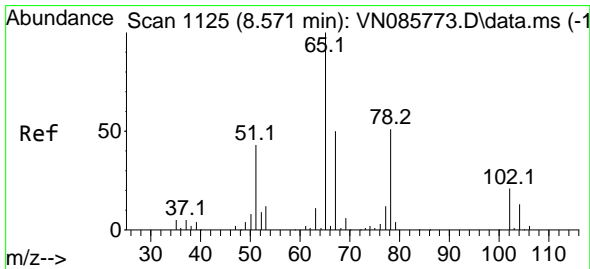
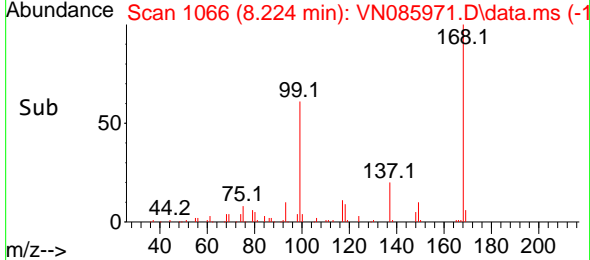
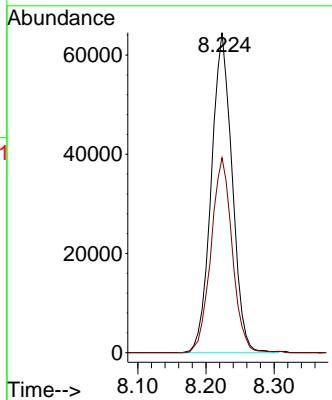
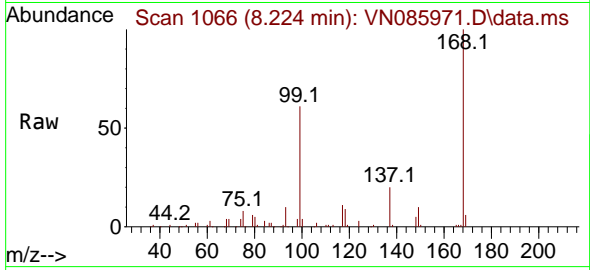




#1  
 Pentafluorobenzene  
 Concen: 50.000 ug/l  
 RT: 8.224 min Scan# 1066  
 Delta R.T. 0.006 min  
 Lab File: VN085971.D  
 Acq: 13 Mar 2025 11:14

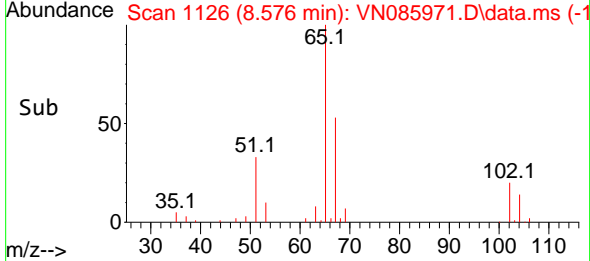
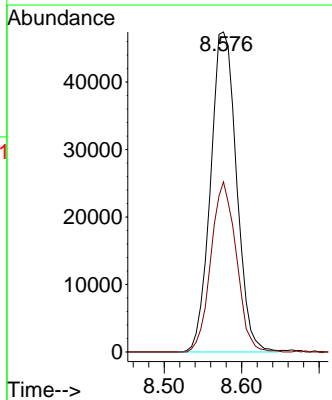
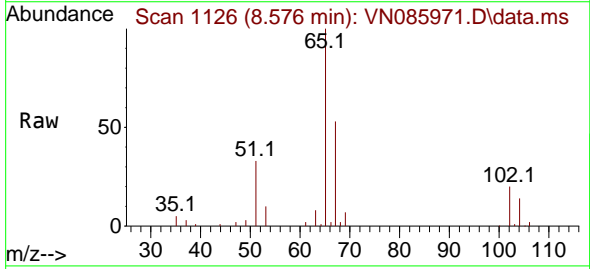
Instrument : MSVOA\_N  
 ClientSampleId : VN0313MBL01

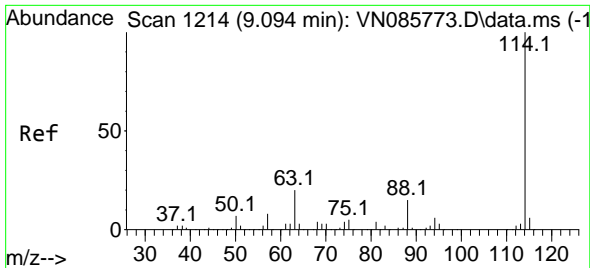
Tgt Ion:168 Resp: 137155  
 Ion Ratio Lower Upper  
 168 100  
 99 60.9 47.9 71.9



#33  
 1,2-Dichloroethane-d4  
 Concen: 62.110 ug/l  
 RT: 8.576 min Scan# 1126  
 Delta R.T. 0.006 min  
 Lab File: VN085971.D  
 Acq: 13 Mar 2025 11:14

Tgt Ion: 65 Resp: 110442  
 Ion Ratio Lower Upper  
 65 100  
 67 51.9 0.0 106.2

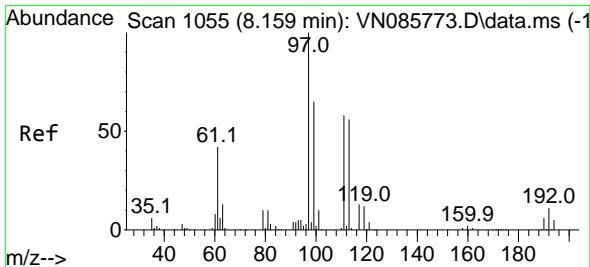
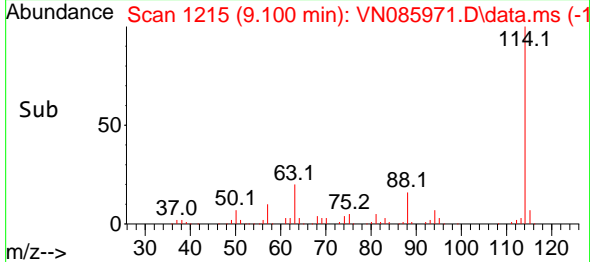
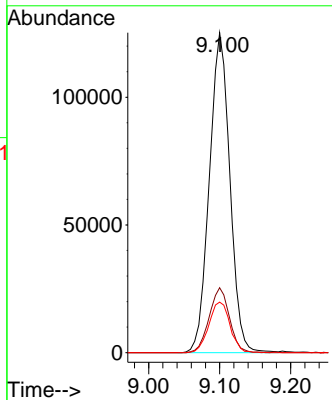
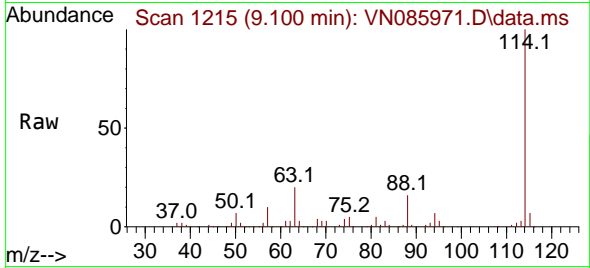




#34  
 1,4-Difluorobenzene  
 Concen: 50.000 ug/l  
 RT: 9.100 min Scan# 11  
 Delta R.T. 0.006 min  
 Lab File: VN085971.D  
 Acq: 13 Mar 2025 11:14

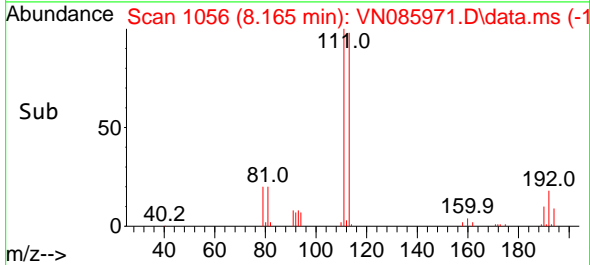
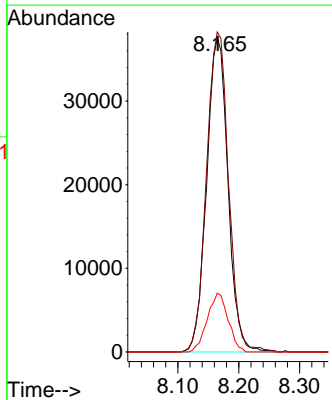
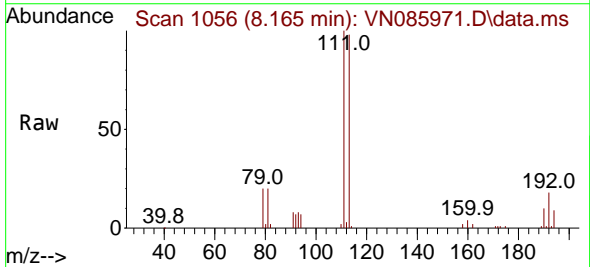
Instrument : MSVOA\_N  
 ClientSampleId : VN0313MBL01

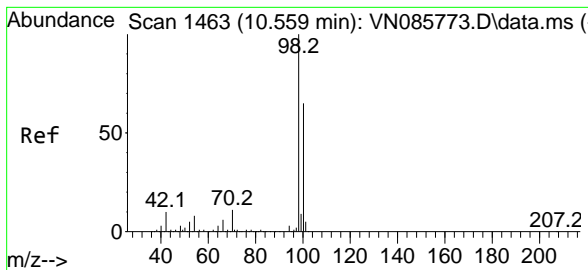
Tgt Ion	Resp	Lower	Upper
114	251620		
63	20.3	0.0	39.2
88	15.8	0.0	30.0



#35  
 Dibromofluoromethane  
 Concen: 55.542 ug/l  
 RT: 8.165 min Scan# 1056  
 Delta R.T. 0.006 min  
 Lab File: VN085971.D  
 Acq: 13 Mar 2025 11:14

Tgt Ion	Resp	Lower	Upper
113	91448		
111	105.3	82.2	123.4
192	18.3	14.7	22.1

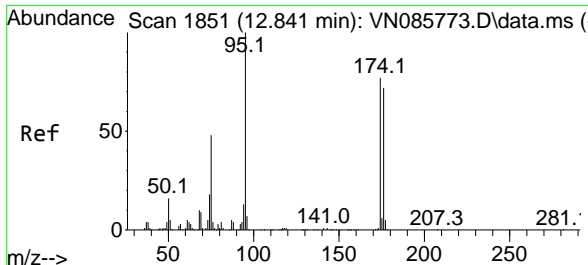
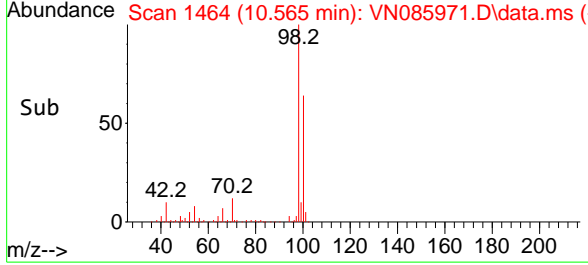
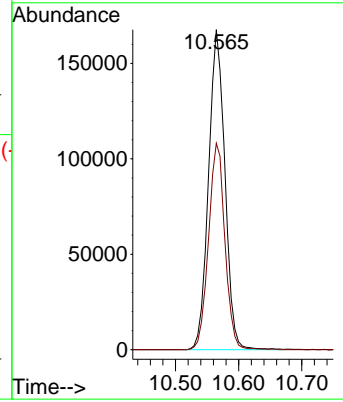
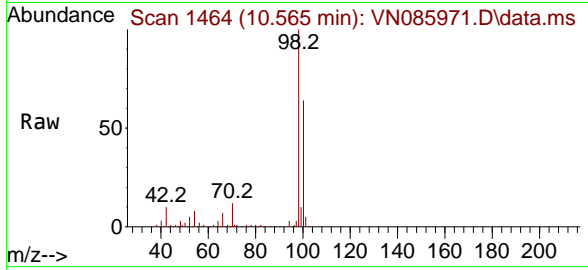




#50  
 Toluene-d8  
 Concen: 50.330 ug/l  
 RT: 10.565 min Scan# 1464  
 Delta R.T. 0.006 min  
 Lab File: VN085971.D  
 Acq: 13 Mar 2025 11:14

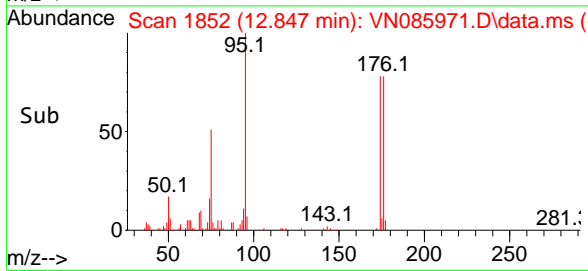
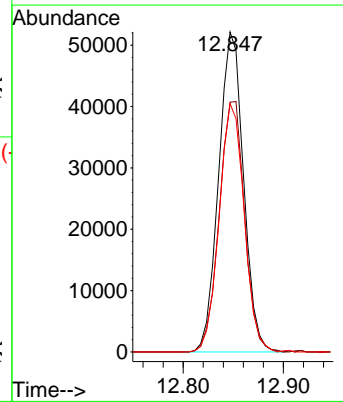
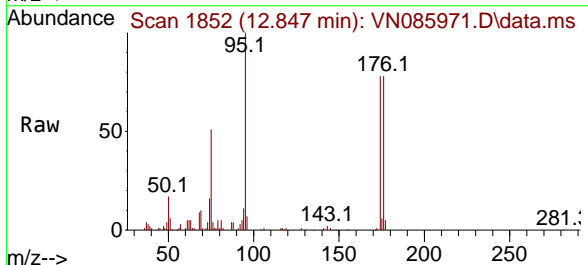
Instrument : MSVOA\_N  
 ClientSampleId : VN0313MBL01

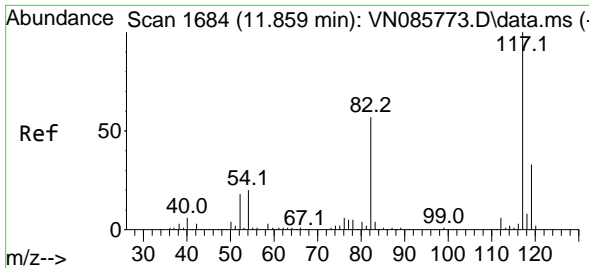
Tgt Ion: 98 Resp: 301494  
 Ion Ratio Lower Upper  
 98 100  
 100 64.6 52.1 78.1



#62  
 4-Bromofluorobenzene  
 Concen: 45.424 ug/l  
 RT: 12.847 min Scan# 1852  
 Delta R.T. 0.006 min  
 Lab File: VN085971.D  
 Acq: 13 Mar 2025 11:14

Tgt Ion: 95 Resp: 89654  
 Ion Ratio Lower Upper  
 95 100  
 174 80.1 0.0 152.4  
 176 78.0 0.0 146.6





#63  
 Chlorobenzene-d5  
 Concen: 50.000 ug/l  
 RT: 11.865 min Scan# 1685  
 Delta R.T. 0.006 min  
 Lab File: VN085971.D  
 Acq: 13 Mar 2025 11:14

Instrument :

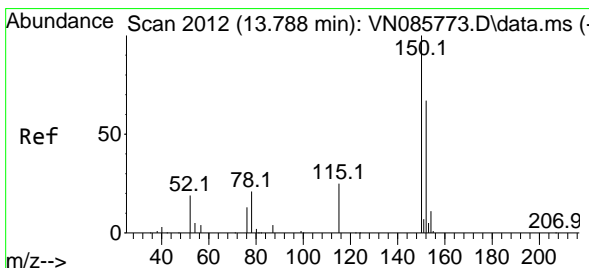
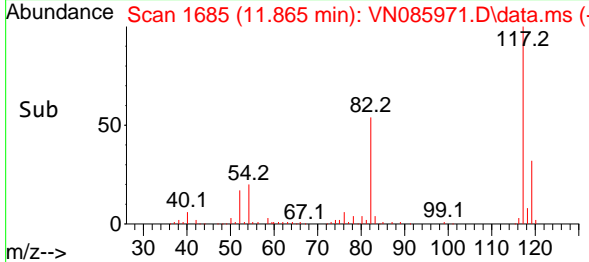
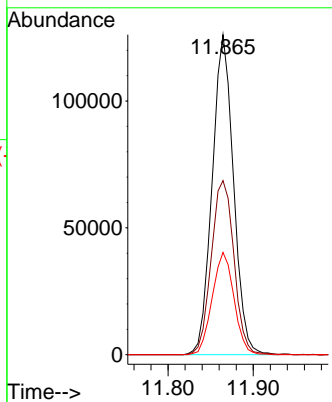
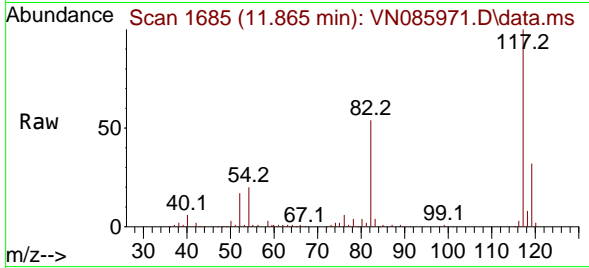
MSVOA\_N

ClientSampleId :

VN0313MBL01

Tgt Ion:117 Resp: 219283

Ion	Ratio	Lower	Upper
117	100		
82	54.4	45.7	68.5
119	32.0	26.2	39.2



#72  
 1,4-Dichlorobenzene-d4  
 Concen: 50.000 ug/l  
 RT: 13.788 min Scan# 2012  
 Delta R.T. -0.000 min  
 Lab File: VN085971.D  
 Acq: 13 Mar 2025 11:14

Tgt Ion:152 Resp: 88994

Ion	Ratio	Lower	Upper
152	100		
115	60.5	30.4	91.3
150	156.6	0.0	345.4

