

Data Path : Z:\VOASRV\HPCHEM1\MSVOA N\DATA\VN031419\
 Data File : VN054271.D
 Acq On : 14 Mar 2019 19:26
 Operator : JC/SP
 Sample : K1898-04
 Misc : 5.00mL/MSVOA N/WATER
 ALS Vial : 20 Sample Multiplier: 1

Instrument :
 MSVOA_N
 ClientSampled :
 MW-4

Quant Time: Mar 15 06:56:32 2019
 Quant Method : Z:\VOASRV\HPCHEM1\MSVOA_N\METHODS\82N031219W.M
 Quant Title : SW846 8260
 QLast Update : Wed Mar 13 03:33:31 2019
 Response via : Initial Calibration

Internal Standards	R.T.	QIon	Response	Conc	Units	Dev(Min)
1) Pentafluorobenzene	7.67	168	1432718	50.00	ug/l	0.00
34) 1,4-Difluorobenzene	8.59	114	2348290	50.00	ug/l	0.00
63) Chlorobenzene-d5	11.41	117	2413625	50.00	ug/l	0.00
72) 1,4-Dichlorobenzene-d4	13.34	152	956293	50.00	ug/l	0.00

System Monitoring Compounds

33) 1,2-Dichloroethane-d4	8.03	65	733129	48.18	ug/l	0.00
Spiked Amount	50.000		Recovery	=	96.36%	
35) Dibromofluoromethane	7.59	113	722333	47.69	ug/l	0.00
Spiked Amount	50.000		Recovery	=	95.38%	
50) Toluene-d8	10.09	98	2870940	51.33	ug/l	0.00
Spiked Amount	50.000		Recovery	=	102.66%	
62) 4-Bromofluorobenzene	12.40	95	1068333	54.59	ug/l	0.00
Spiked Amount	50.000		Recovery	=	109.18%	

Target Compounds

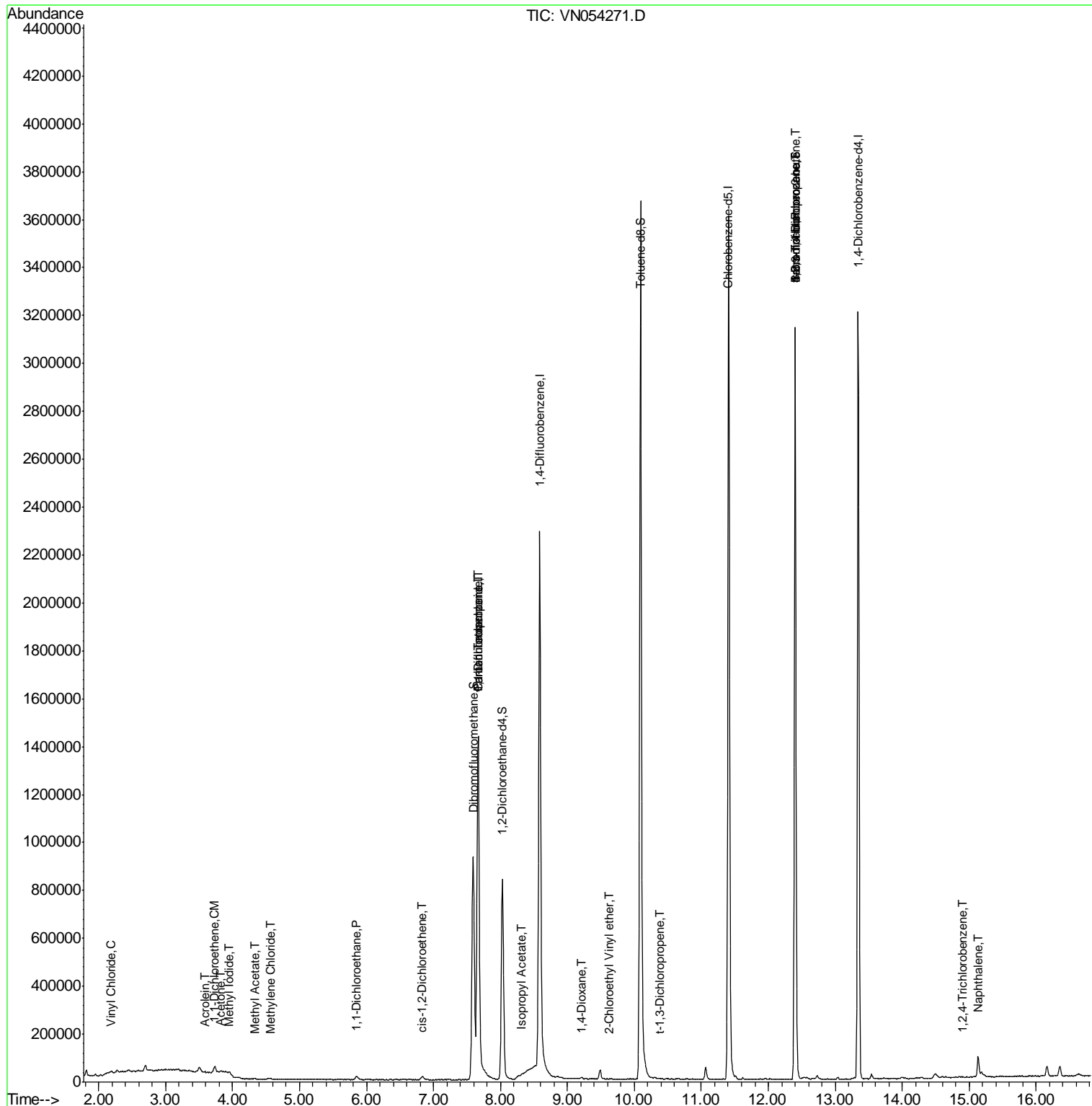
						Qvalue
4) Vinyl Chloride	2.19	62	5634	0.374	ug/l	94
10) Methyl Iodide	3.94	142	544	1.522	ug/l #	67
12) 1,1-Dichloroethene	3.73	96	14950	1.004	ug/l #	79
13) Acrolein	3.60	56	250	0.253	ug/l	86
16) Acetone	3.83	43	10324	2.370	ug/l #	81
18) Methyl Acetate	4.34	43	2156	0.245	ug/l	99
20) Methylene Chloride	4.55	84	3775	0.264	ug/l	90
24) 1,1-Dichloroethane	5.85	63	20875	0.853	ug/l	98
27) cis-1,2-Dichloroethene	6.83	96	9967	0.626	ug/l	84
31) Cyclohexane	7.66	56	20914	Below Cal	#	1
36) 1,1-Dichloropropene	7.67	75	81531	3.770	ug/l #	47
38) Carbon Tetrachloride	7.67	117	114079	5.030	ug/l #	15
43) Isopropyl Acetate	8.30	43	26087	1.196	ug/l #	60
49) 1,4-Dioxane	9.21	88	3820	24.399	ug/l #	74
53) t-1,3-Dichloropropene	10.37	75	144	1.992	ug/l #	1
58) 2-Chloroethyl Vinyl ether	9.62	63	31	16.832	ug/l #	44
71) Bromoform	12.40	173	6199	2.753	ug/l #	1
76) 1,2,3-Trichloropropane	12.40	75	501474	35.660	ug/l #	100
81) trans-1,4-Dichloro-2-buten	12.40	75	501474	121.901	ug/l #	11
93) 1,2,4-Trichlorobenzene	14.90	180	394	2.535	ug/l #	49
95) Naphthalene	15.13	128	81714	5.283	ug/l	99

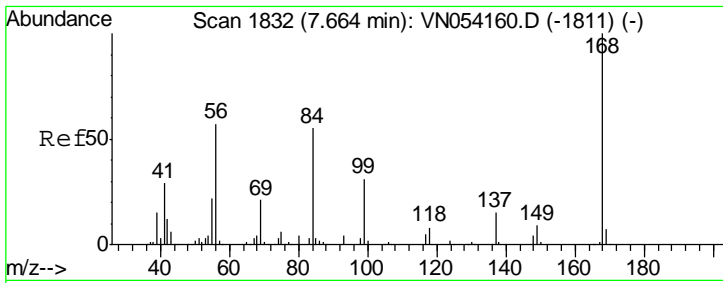
(#) = qualifier out of range (m) = manual integration (+) = signals summed

Data Path : Z:\VOASRV\HPCHEM1\MSVOA N\DATA\VN031419\
 Data File : VN054271.D
 Acq On : 14 Mar 2019 19:26
 Operator : JC/SP
 Sample : K1898-04
 Misc : 5.00mL/MSVOA N/WATER
 ALS Vial : 20 Sample Multiplier: 1

Instrument :
 MSVOA_N
 Client Sampled :
 MW-4

Quant Time: Mar 15 06:56:32 2019
 Quant Method : Z:\VOASRV\HPCHEM1\MSVOA_N\METHODS\82N031219W.M
 Quant Title : SW846 8260
 QLast Update : Wed Mar 13 03:33:31 2019
 Response via : Initial Calibration

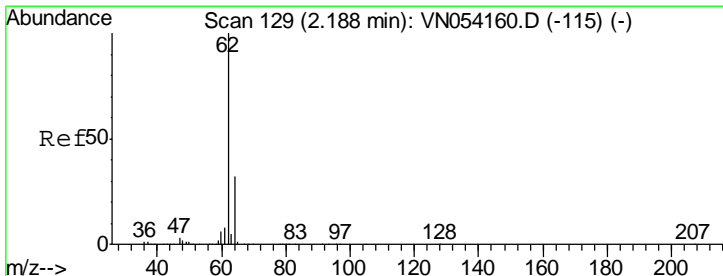
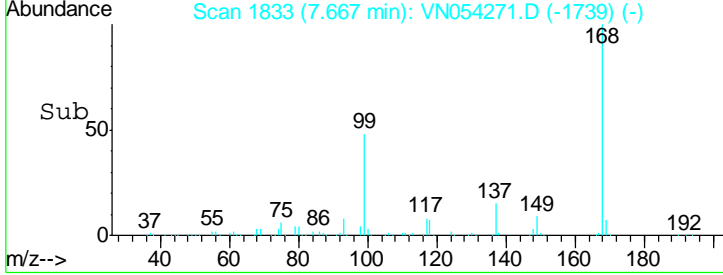
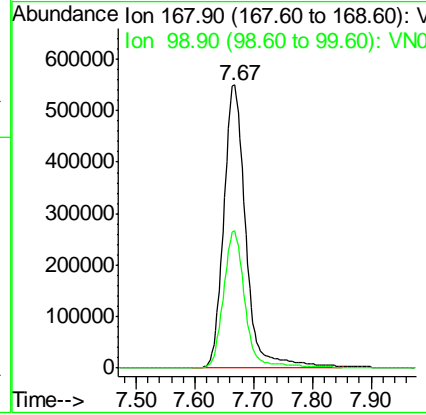
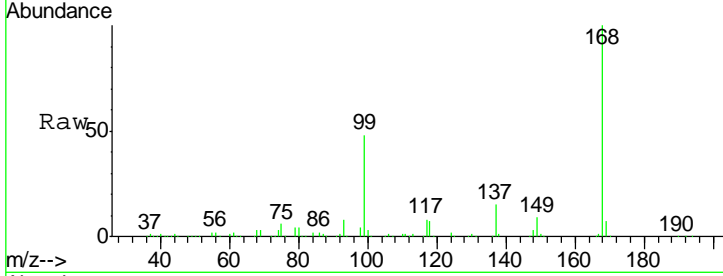




#1
 Pentafluorobenzene
 Concen: 50.000 ug/l
 RT: 7.67 min Scan# 1833
 Delta R.T. 0.00 min
 Lab File: VN054271.D
 Acq: 14 Mar 2019 19:26

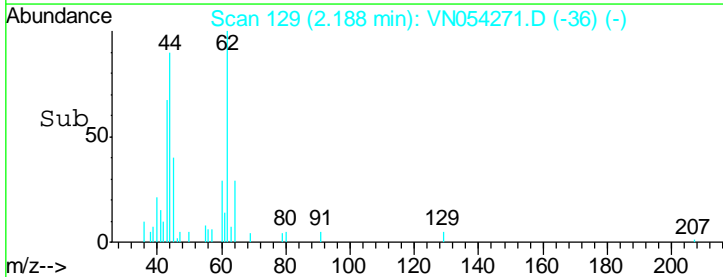
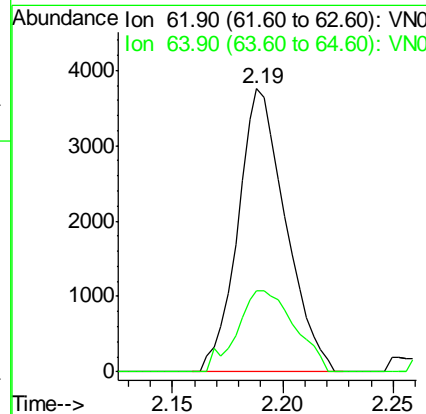
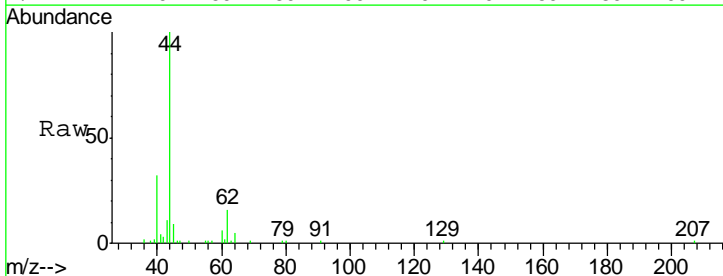
Instrument :
 MSVOA_N
 ClientSampled :
 MW-4

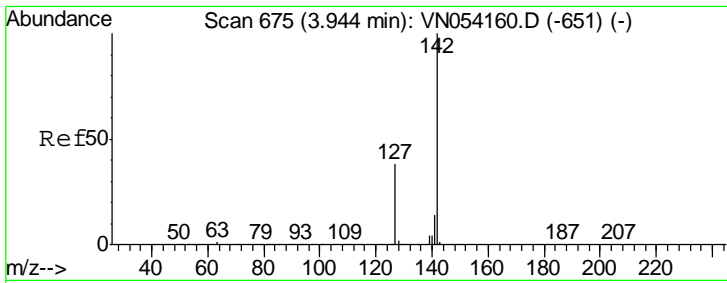
Tgt Ion: 168 Resp: 1432718
 Ion Ratio Lower Upper
 168 100
 99 48.3 37.1 55.7



#4
 Vinyl Chloride
 Concen: 0.374 ug/l
 RT: 2.19 min Scan# 129
 Delta R.T. 0.00 min
 Lab File: VN054271.D
 Acq: 14 Mar 2019 19:26

Tgt Ion: 62 Resp: 5634
 Ion Ratio Lower Upper
 62 100
 64 28.6 25.5 38.3

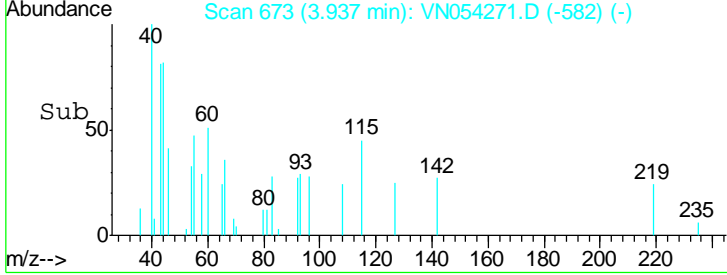
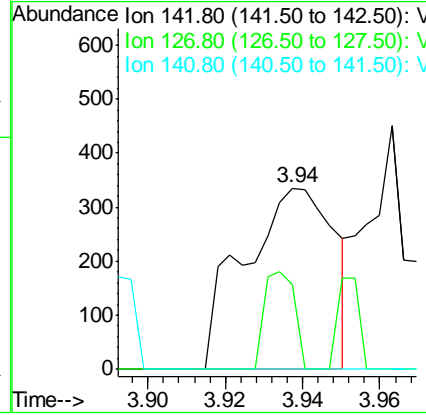
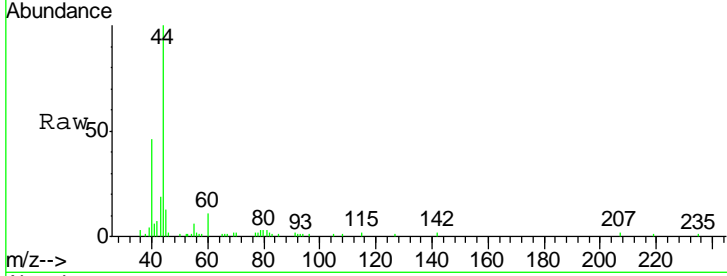




#10
 Methyl Iodide
 Concen: 1.522 ug/l
 RT: 3.94 min Scan# 673
 Delta R.T. -0.01 min
 Lab File: VN054271.D
 Acq: 14 Mar 2019 19:26

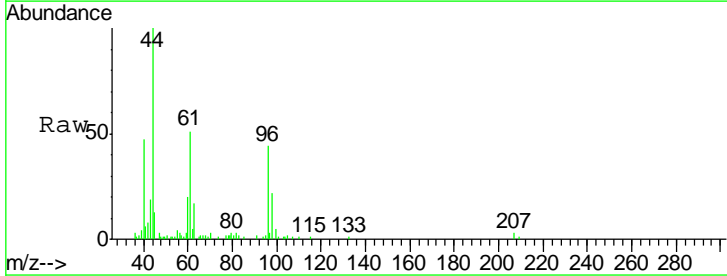
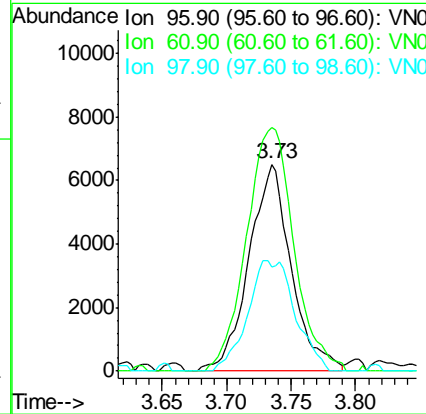
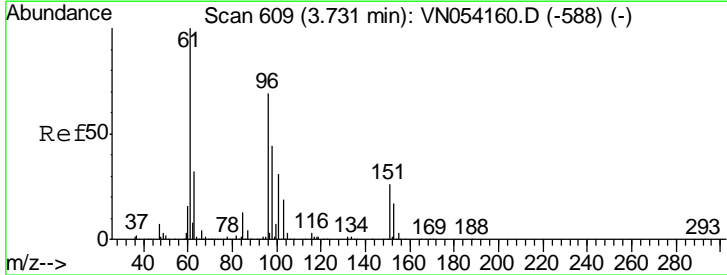
Instrument :
 MSVOA_N
 ClientSampled :
 MW-4

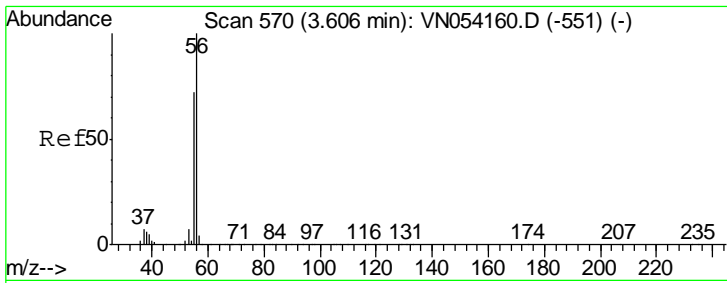
Tgt Ion	Resp	Lower	Upper
142	544		
127	18.0	30.3	45.5#
141	0.0	11.2	16.8#



#12
 1,1-Dichloroethene
 Concen: 1.004 ug/l
 RT: 3.73 min Scan# 610
 Delta R.T. 0.00 min
 Lab File: VN054271.D
 Acq: 14 Mar 2019 19:26

Tgt Ion	Resp	Lower	Upper
96	14950		
61	117.7	116.5	174.7
98	50.4	51.0	76.4#

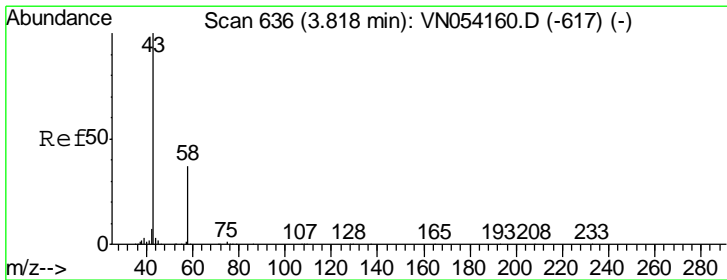
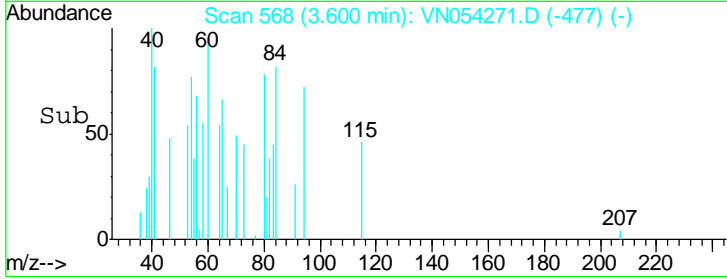
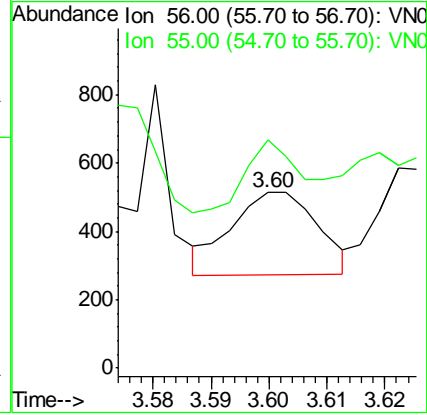
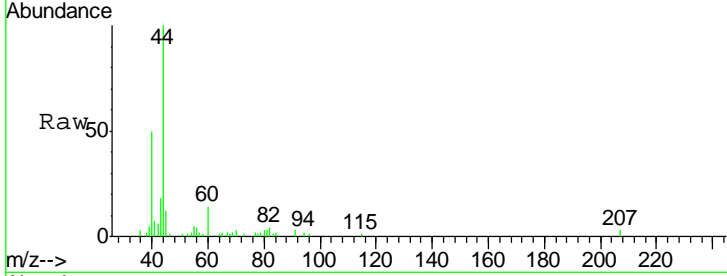




#13
 Acrolein
 Concen: 0.253 ug/l
 RT: 3.60 min Scan# 568
 Delta R.T. -0.01 min
 Lab File: VN054271.D
 Acq: 14 Mar 2019 19:26

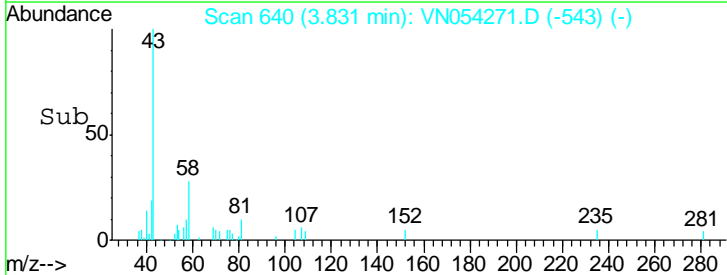
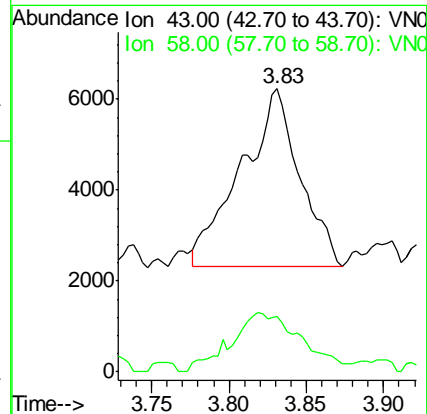
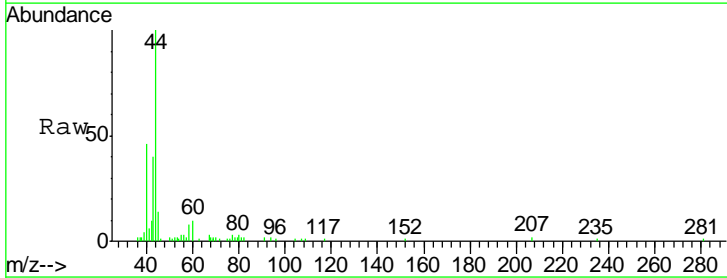
Instrument :
 MSVOA_N
 ClientSampled :
 MW-4

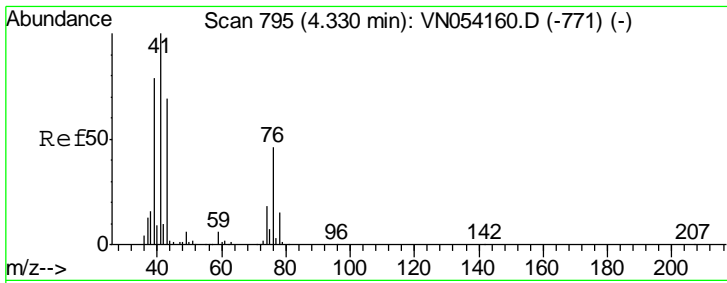
Tgt Ion: 56 Resp: 250
 Ion Ratio Lower Upper
 56 100
 55 59.2 56.7 85.1



#16
 Acetone
 Concen: 2.370 ug/l
 RT: 3.83 min Scan# 640
 Delta R.T. 0.01 min
 Lab File: VN054271.D
 Acq: 14 Mar 2019 19:26

Tgt Ion: 43 Resp: 10324
 Ion Ratio Lower Upper
 43 100
 58 26.3 29.9 44.9#

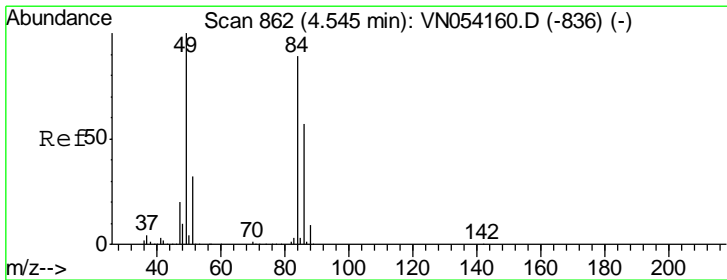
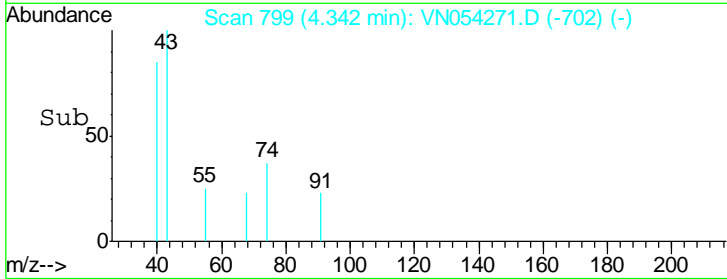
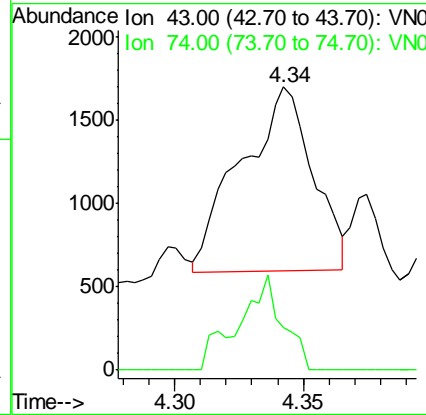
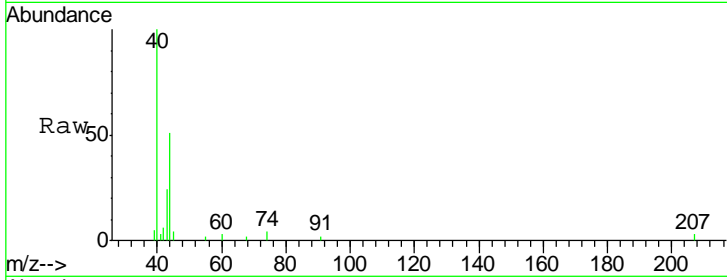




#18
 Methyl Acetate
 Concen: 0.245 ug/l
 RT: 4.34 min Scan# 799
 Delta R.T. 0.01 min
 Lab File: VN054271.D
 Acq: 14 Mar 2019 19:26

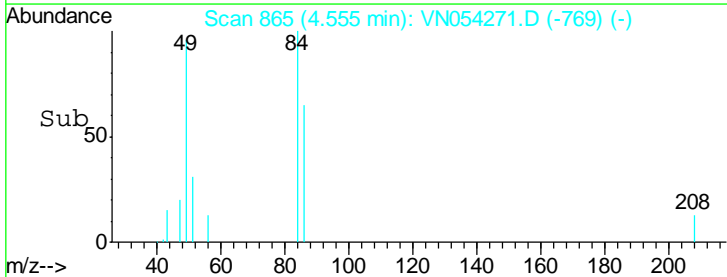
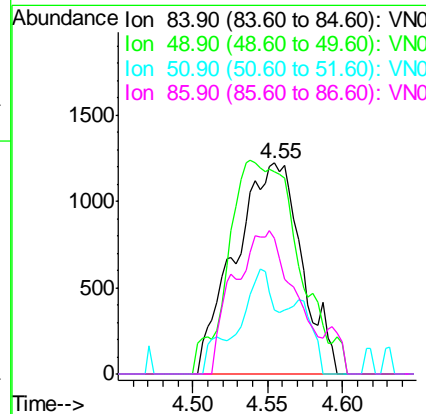
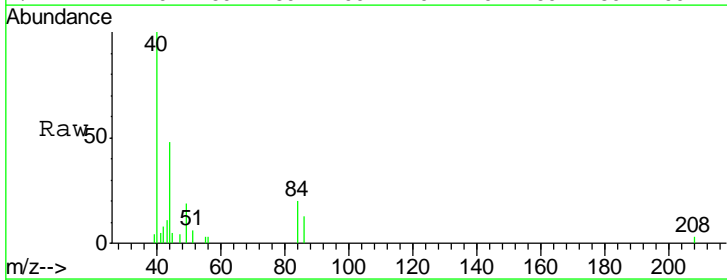
Instrument :
 MSVOA_N
 ClientSampled :
 MW-4

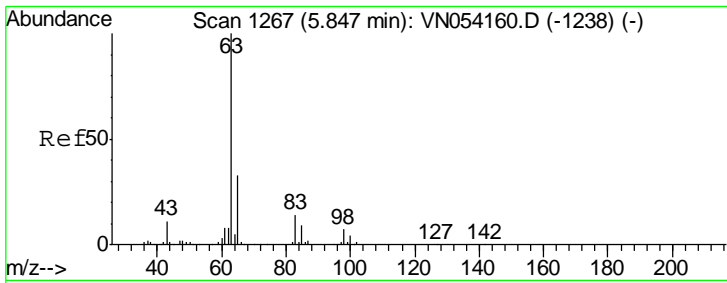
Tgt Ion: 43 Resp: 2156
 Ion Ratio Lower Upper
 43 100
 74 25.7 20.8 31.2



#20
 Methylene Chloride
 Concen: 0.264 ug/l
 RT: 4.55 min Scan# 865
 Delta R.T. 0.01 min
 Lab File: VN054271.D
 Acq: 14 Mar 2019 19:26

Tgt Ion: 84 Resp: 3775
 Ion Ratio Lower Upper
 84 100
 49 95.8 89.7 134.5
 51 30.6 28.2 42.4
 86 64.6 50.8 76.2

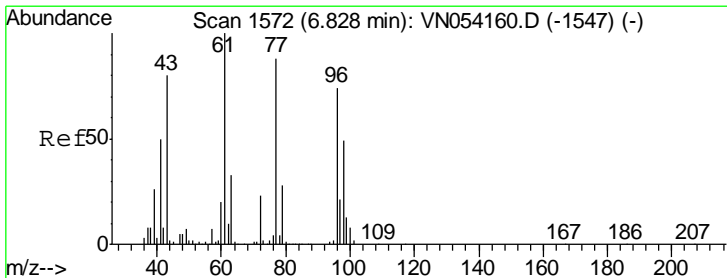
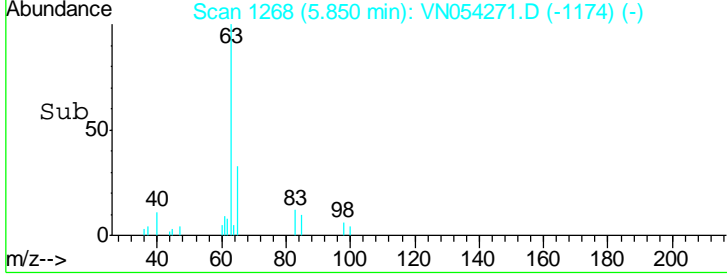
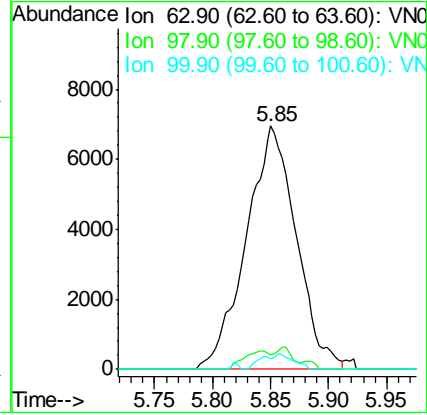
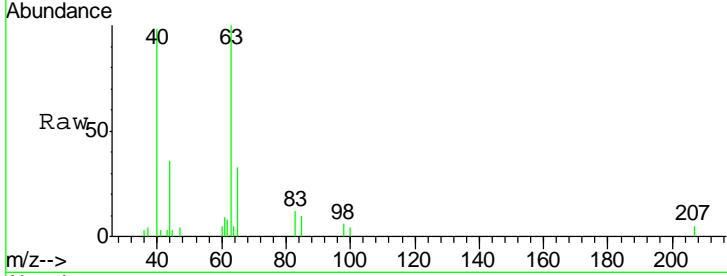




#24
 1,1-Dichloroethane
 Concen: 0.853 ug/l
 RT: 5.85 min Scan# 1268
 Delta R.T. 0.00 min
 Lab File: VN054271.D
 Acq: 14 Mar 2019 19:26

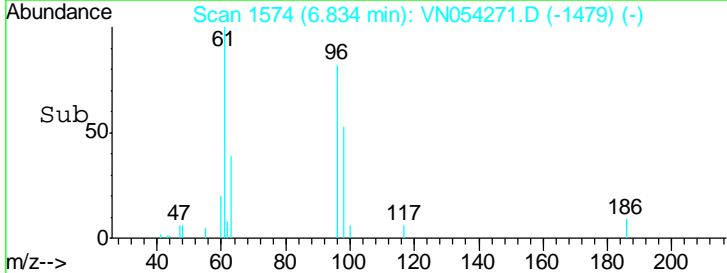
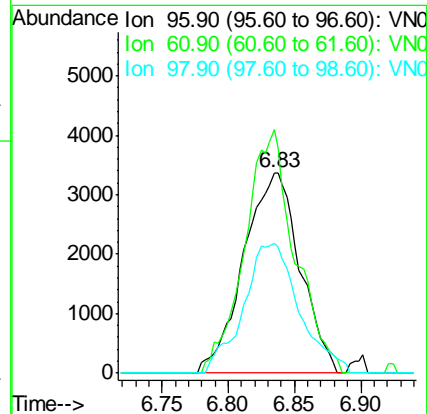
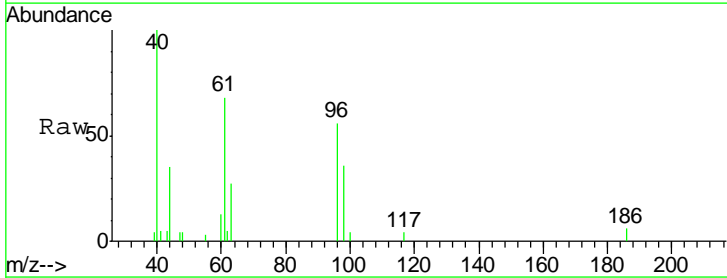
Instrument :
 MSVOA_N
 ClientSampled :
 MW-4

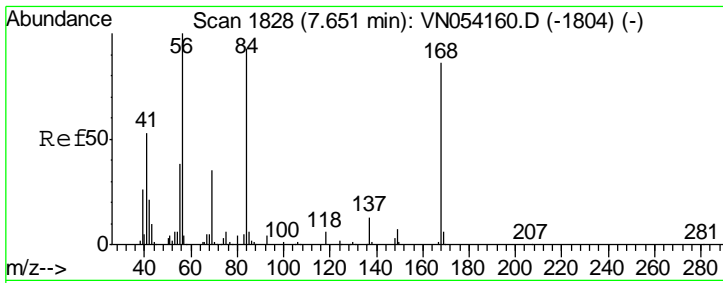
Tgt Ion	Resp	Lower	Upper
63	100		
98	6.1	3.5	10.5
100	4.3	2.0	6.0



#27
 cis-1,2-Dichloroethene
 Concen: 0.626 ug/l
 RT: 6.83 min Scan# 1574
 Delta R.T. 0.01 min
 Lab File: VN054271.D
 Acq: 14 Mar 2019 19:26

Tgt Ion	Resp	Lower	Upper
96	100		
61	108.2	0.0	273.0
98	64.0	0.0	130.6

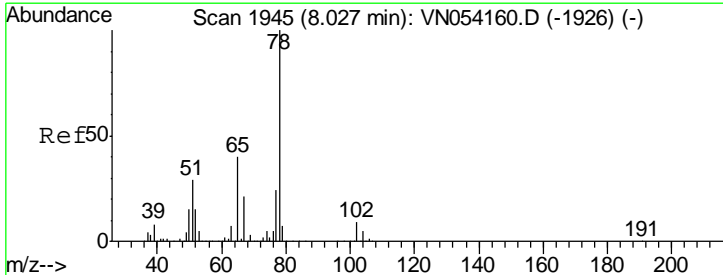
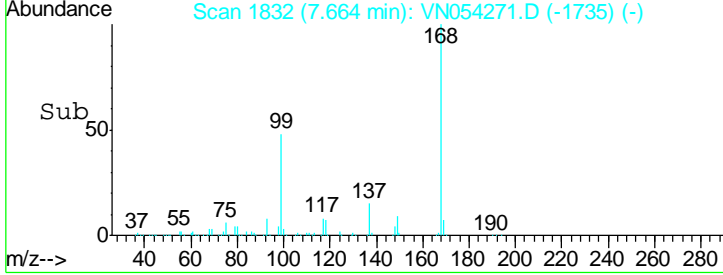
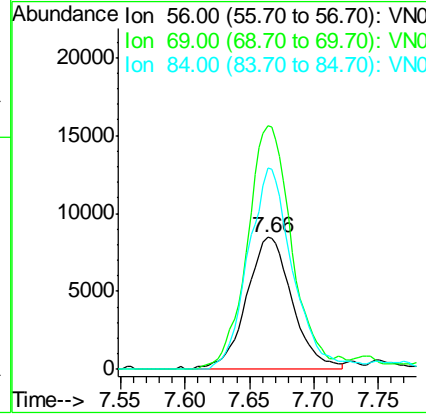
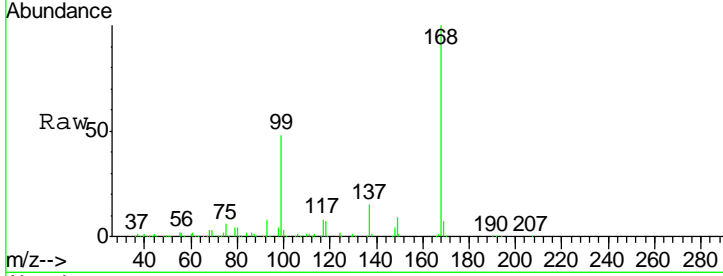




#31
 Cyclohexane
 Concen: Below Cal
 RT: 7.66 min Scan# 1832
 Delta R.T. 0.01 min
 Lab File: VN054271.D
 Acq: 14 Mar 2019 19:26

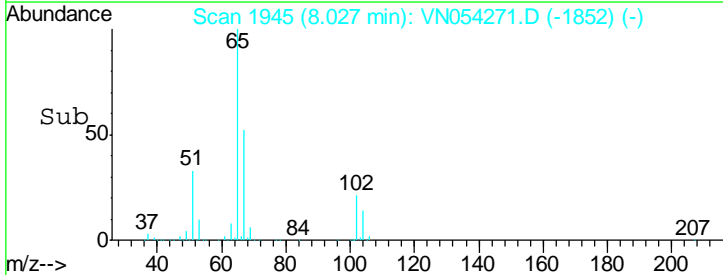
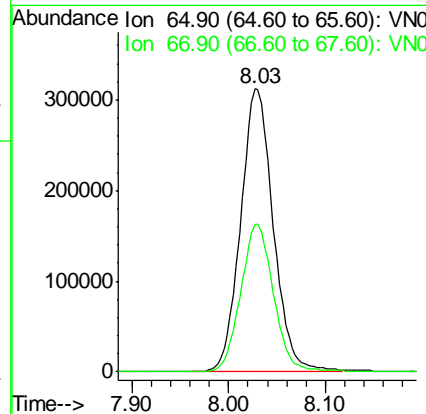
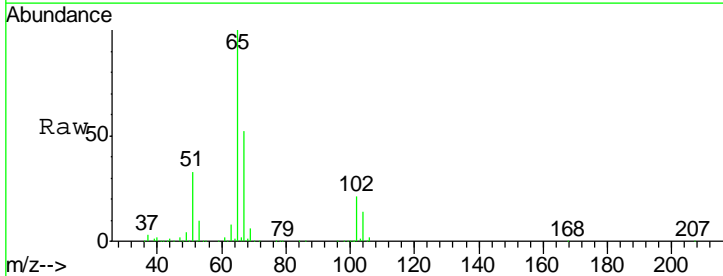
Instrument :
 MSVOA_N
 ClientSampled :
 MW-4

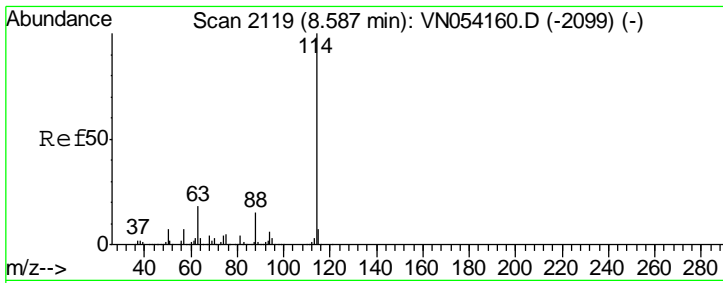
Tgt Ion	Resp	Lower	Upper
56	20914		
69	184.3	27.8	41.6#
84	152.7	74.6	111.8#



#33
 1,2-Dichloroethane-d4
 Concen: 48.183 ug/l
 RT: 8.03 min Scan# 1945
 Delta R.T. 0.00 min
 Lab File: VN054271.D
 Acq: 14 Mar 2019 19:26

Tgt Ion	Resp	Lower	Upper
65	733129		
67	52.6	0.0	104.6



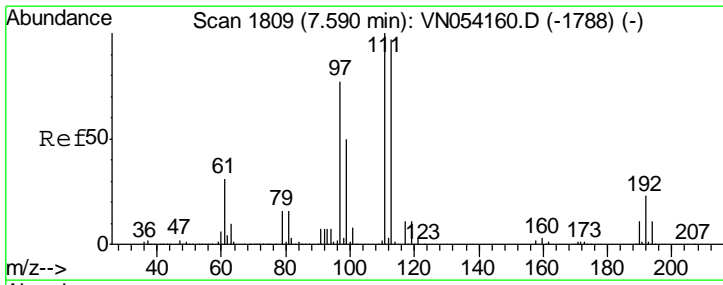
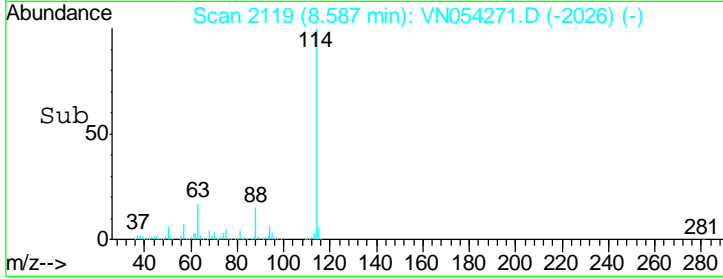
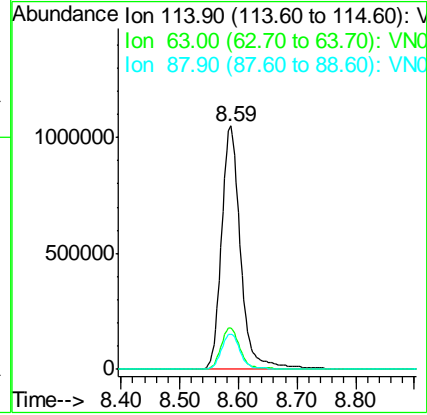
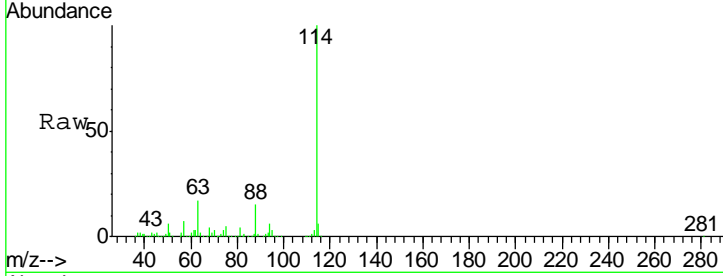


#34
 1,4-Difluorobenzene
 Concen: 50.000 ug/l
 RT: 8.59 min Scan# 2119
 Delta R.T. 0.00 min
 Lab File: VN054271.D
 Acq: 14 Mar 2019 19:26

Instrument :
 MSVOA_N
 ClientSampled :
 MW-4

Tgt Ion:114 Resp: 2348290

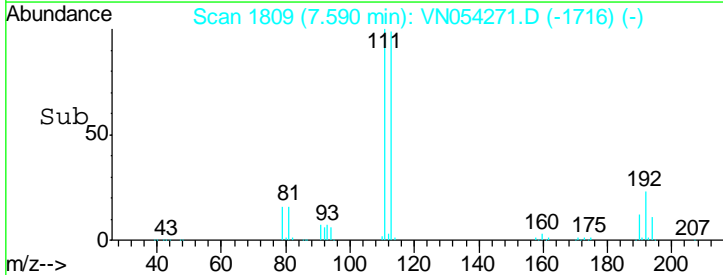
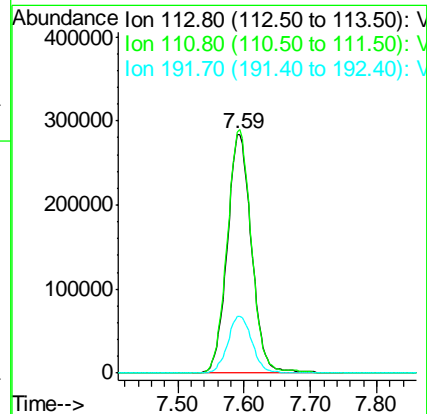
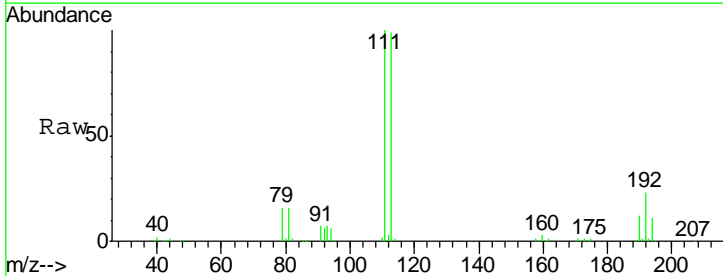
Ion	Ratio	Lower	Upper
114	100		
63	17.1	0.0	35.2
88	14.6	0.0	30.2

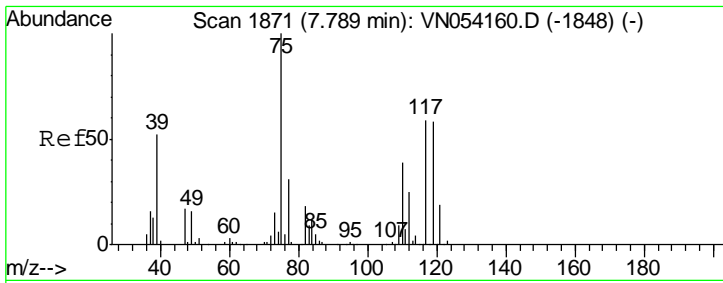


#35
 Dibromofluoromethane
 Concen: 47.693 ug/l
 RT: 7.59 min Scan# 1809
 Delta R.T. 0.00 min
 Lab File: VN054271.D
 Acq: 14 Mar 2019 19:26

Tgt Ion:113 Resp: 722333

Ion	Ratio	Lower	Upper
113	100		
111	101.8	82.2	123.4
192	23.8	19.2	28.8

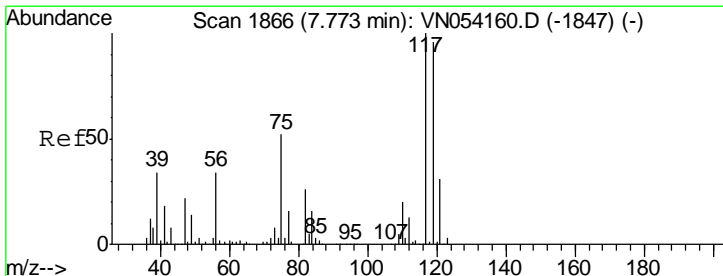
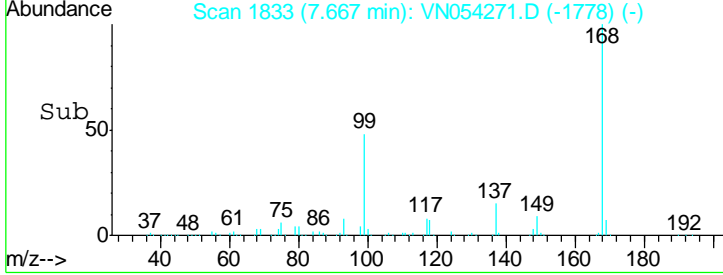
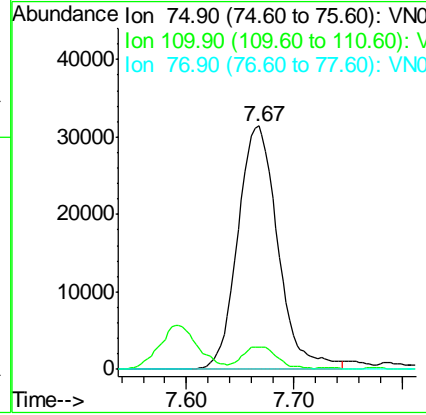
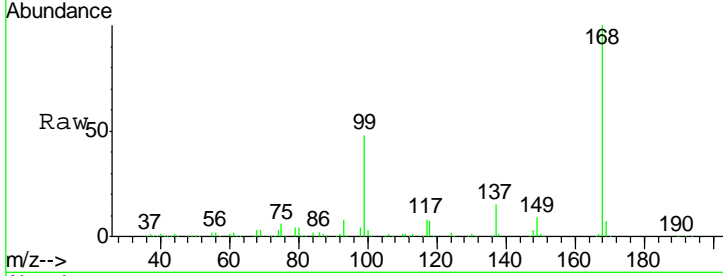




#36
 1,1-Dichloropropene
 Concen: 3.770 ug/l
 RT: 7.67 min Scan# 1833
 Delta R.T. -0.12 min
 Lab File: VN054271.D
 Acq: 14 Mar 2019 19:26

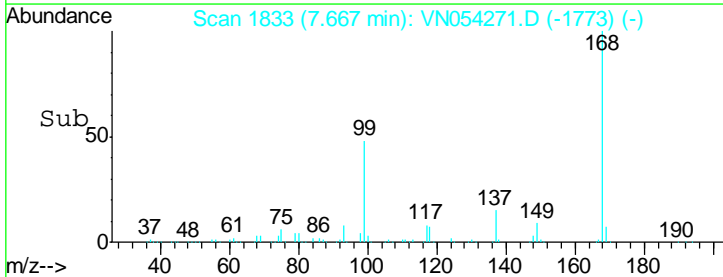
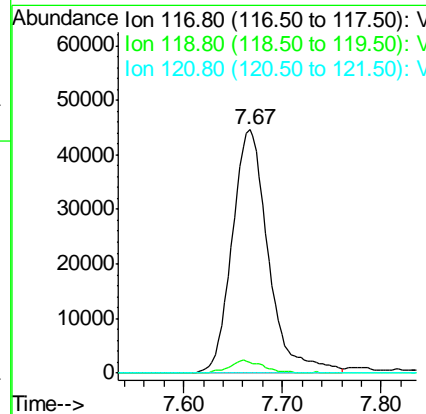
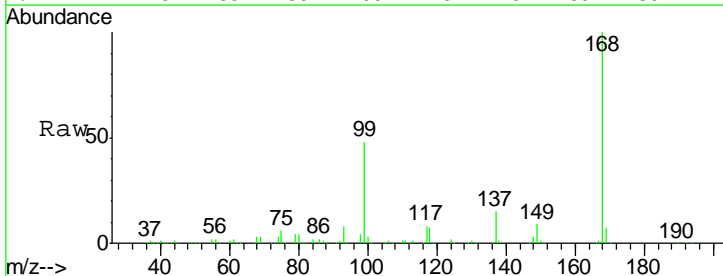
Instrument :
 MSVOA_N
 ClientSampled :
 MW-4

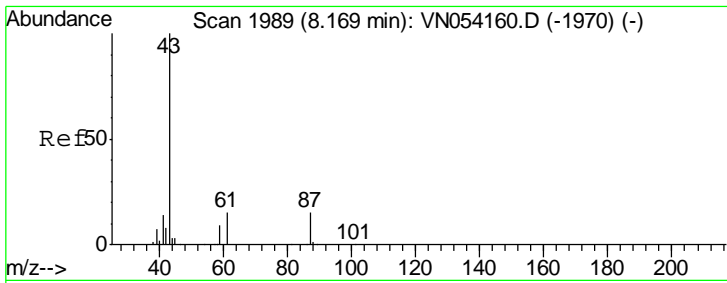
Tgt Ion	Resp	Lower	Upper
75	100		
110	8.3	19.1	57.5#
77	0.0	25.0	37.4#



#38
 Carbon Tetrachloride
 Concen: 5.030 ug/l
 RT: 7.67 min Scan# 1833
 Delta R.T. -0.11 min
 Lab File: VN054271.D
 Acq: 14 Mar 2019 19:26

Tgt Ion	Resp	Lower	Upper
117	100		
119	4.1	76.3	114.5#
121	0.0	24.6	36.8#

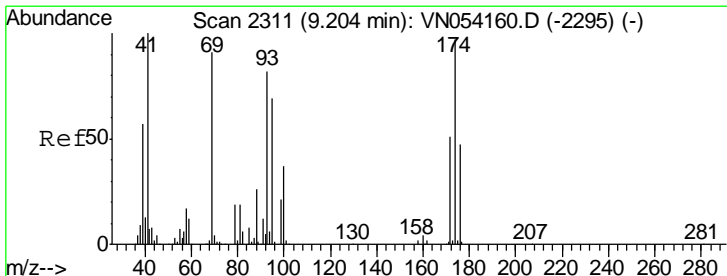
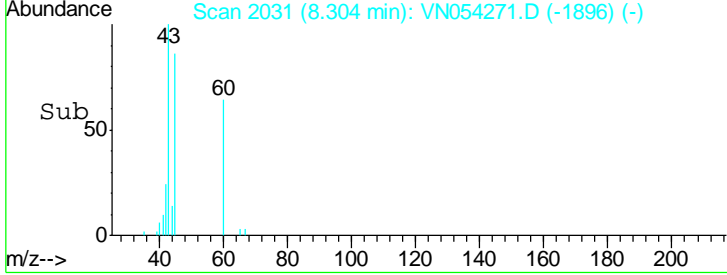
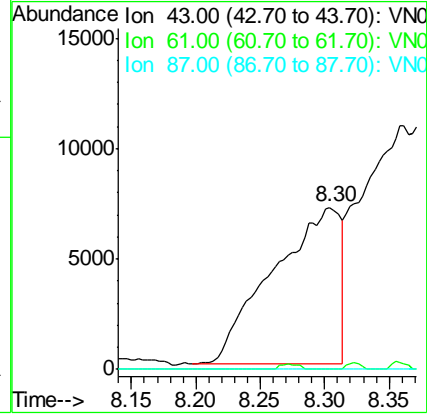
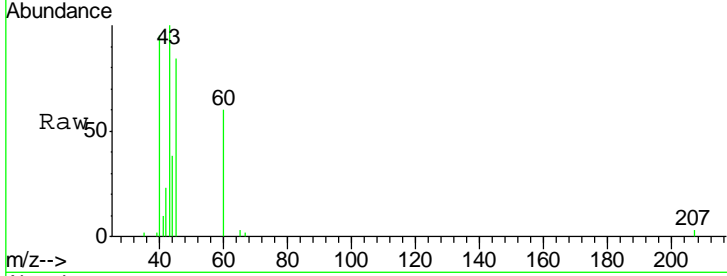




#43
 Isopropyl Acetate
 Concen: 1.196 ug/l
 RT: 8.30 min Scan# 2031
 Delta R.T. 0.14 min
 Lab File: VN054271.D
 Acq: 14 Mar 2019 19:26

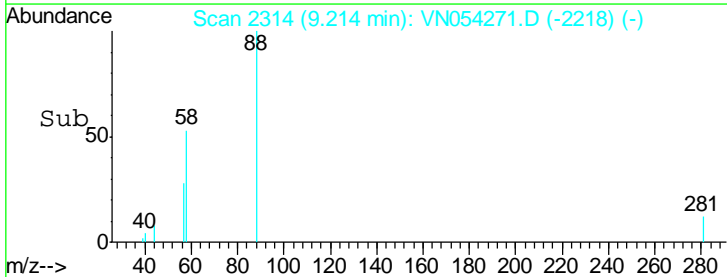
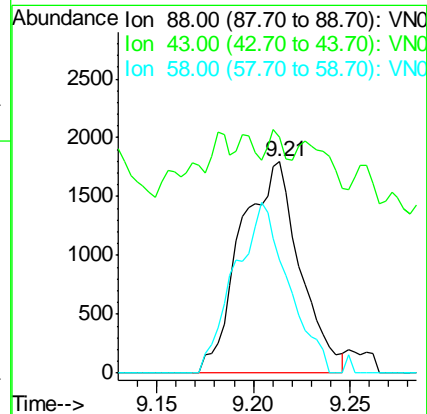
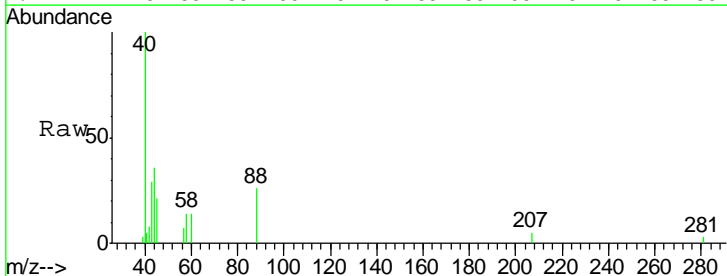
Instrument : MSVOA_N
 ClientSampled : MW-4

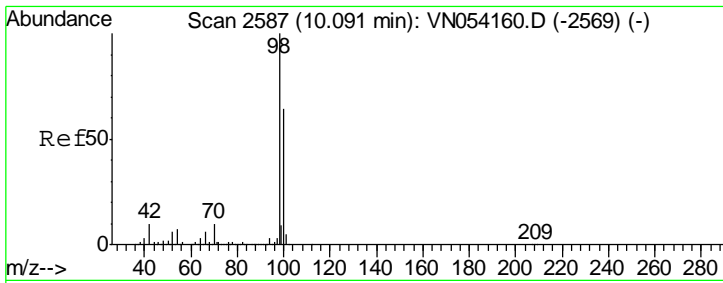
Tgt Ion	Resp	Lower	Upper
43	26087		
61	0.0	15.8	23.8#
87	0.0	12.0	18.0#



#49
 1,4-Dioxane
 Concen: 24.399 ug/l
 RT: 9.21 min Scan# 2314
 Delta R.T. 0.01 min
 Lab File: VN054271.D
 Acq: 14 Mar 2019 19:26

Tgt Ion	Resp	Lower	Upper
88	3820		
43	0.0	24.1	36.1#
58	73.0	50.8	76.2

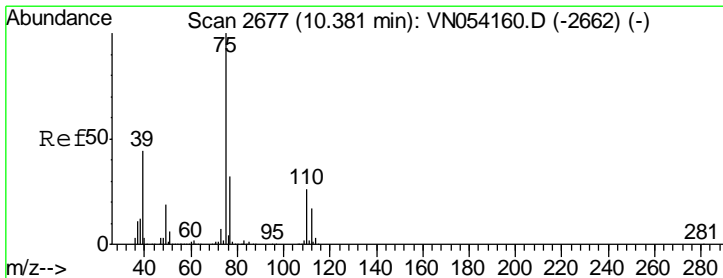
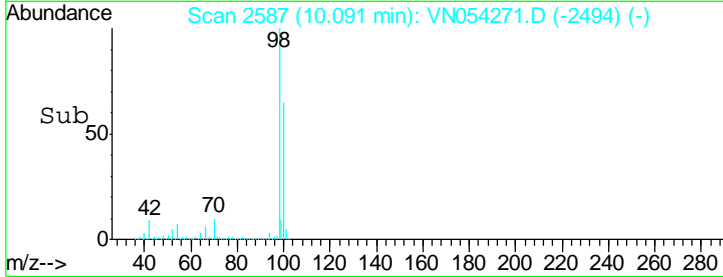
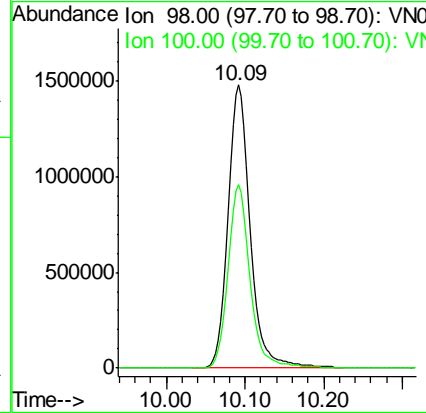
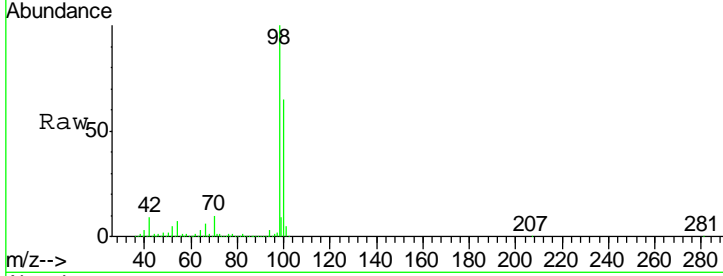




#50
 Toluene-d8
 Concen: 51.327 ug/l
 RT: 10.09 min Scan# 2587
 Delta R.T. 0.00 min
 Lab File: VN054271.D
 Acq: 14 Mar 2019 19:26

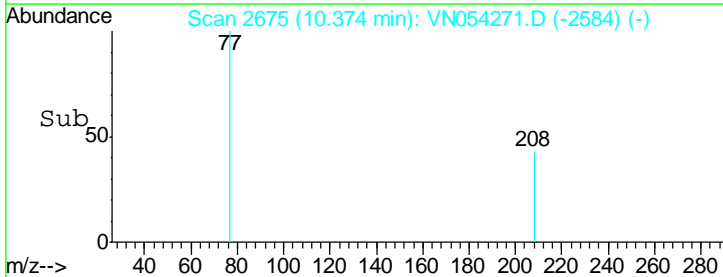
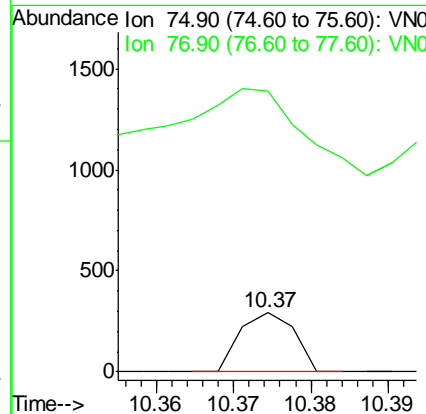
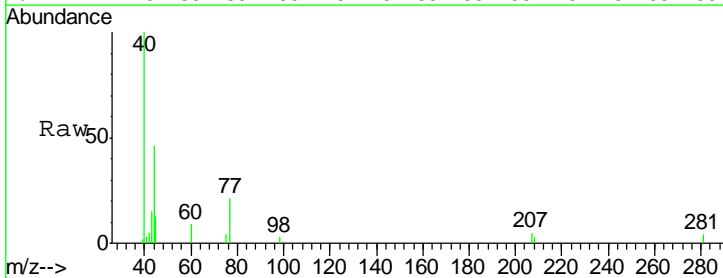
Instrument :
 MSVOA_N
 ClientSampled :
 MW-4

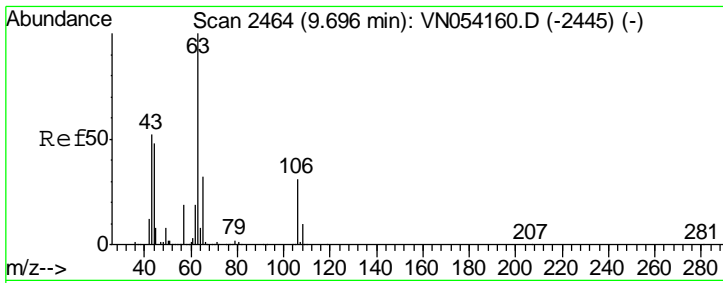
Tgt Ion: 98 Resp: 2870940
 Ion Ratio Lower Upper
 98 100
 100 64.6 51.2 76.8



#53
 t-1,3-Dichloropropene
 Concen: 1.992 ug/l
 RT: 10.37 min Scan# 2675
 Delta R.T. -0.01 min
 Lab File: VN054271.D
 Acq: 14 Mar 2019 19:26

Tgt Ion: 75 Resp: 144
 Ion Ratio Lower Upper
 75 100
 77 113.0 25.8 38.8#

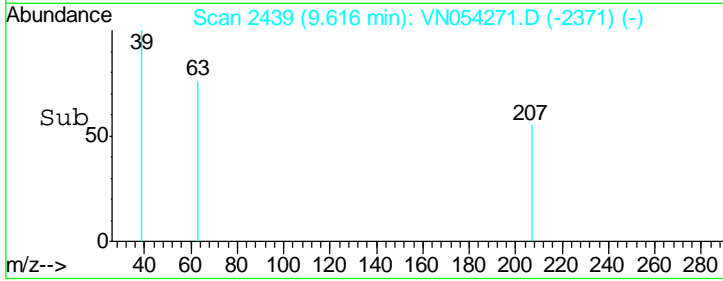
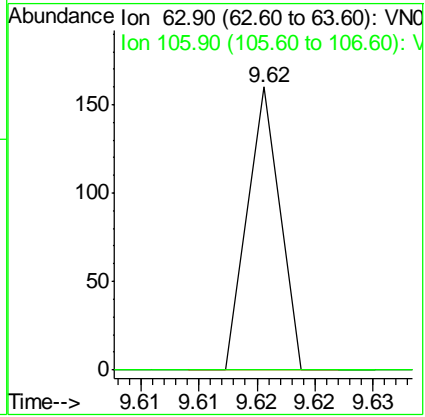
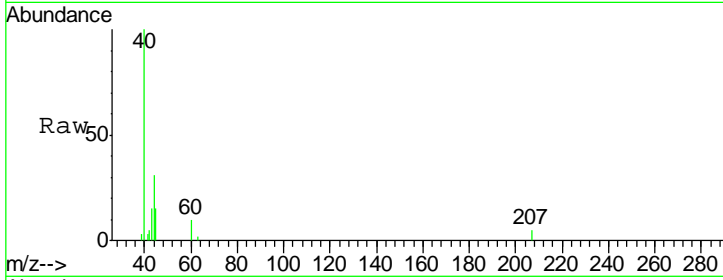




#58
 2-Chloroethyl Vinyl ether
 Concen: 16.832 ug/l
 RT: 9.62 min Scan# 2439
 Delta R.T. -0.08 min
 Lab File: VN054271.D
 Acq: 14 Mar 2019 19:26

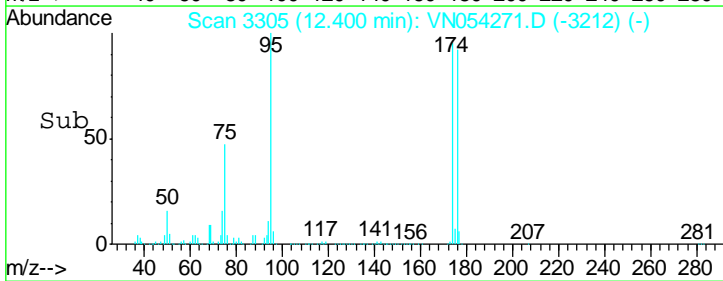
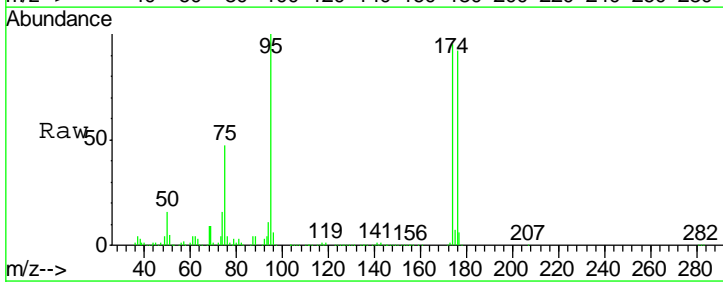
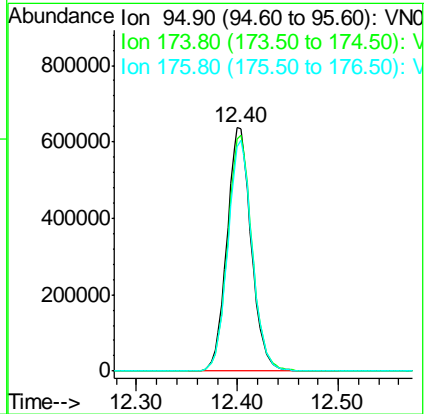
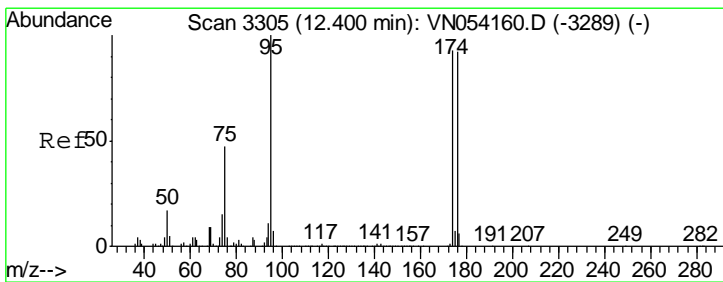
Instrument : MSVOA_N
 ClientSampled : MW-4

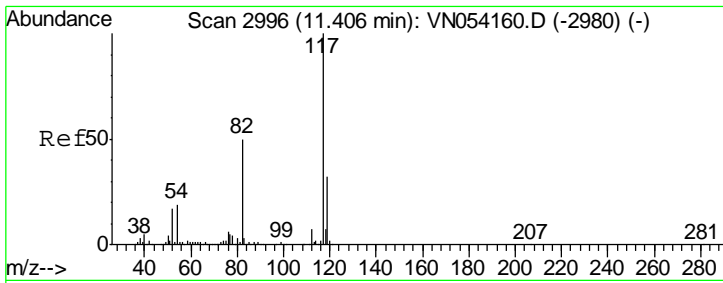
Tgt Ion	Resp	Lower	Upper
63	100		
106	0.0	24.4	36.6#



#62
 4-Bromofluorobenzene
 Concen: 54.586 ug/l
 RT: 12.40 min Scan# 3305
 Delta R.T. 0.00 min
 Lab File: VN054271.D
 Acq: 14 Mar 2019 19:26

Tgt Ion	Resp	Lower	Upper
95	100		
174	97.7	0.0	191.0
176	95.4	0.0	187.4



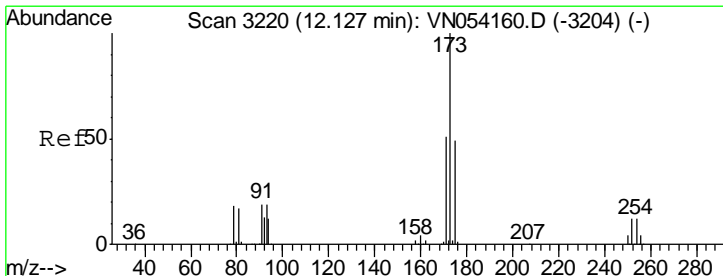
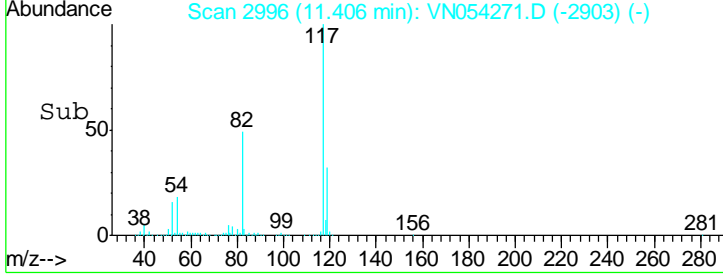
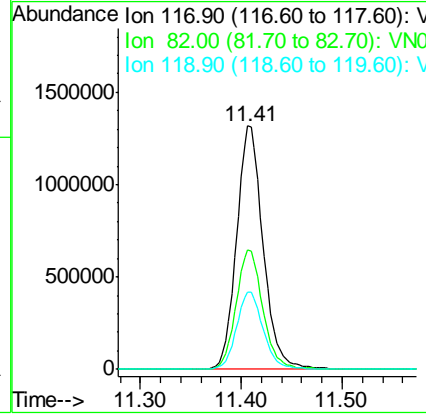
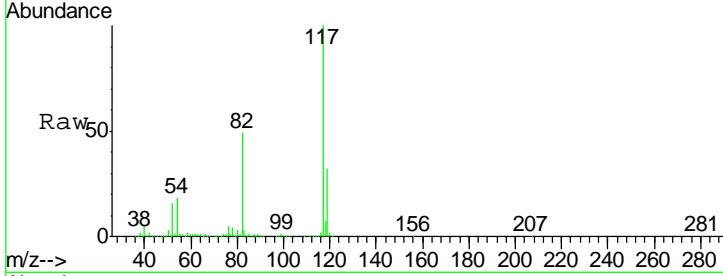


#63
 Chlorobenzene-d5
 Concen: 50.000 ug/l
 RT: 11.41 min Scan# 2996
 Delta R.T. 0.00 min
 Lab File: VN054271.D
 Acq: 14 Mar 2019 19:26

Instrument :
 MSVOA_N
 ClientSampled :
 MW-4

Tgt Ion:117 Resp: 2413625

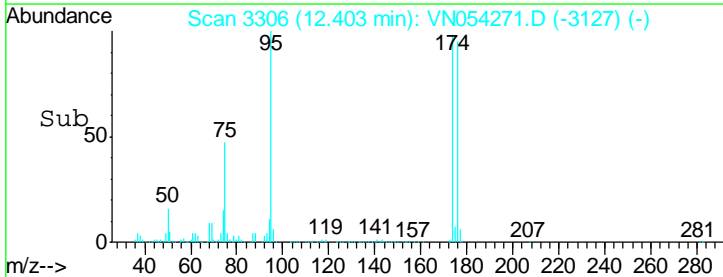
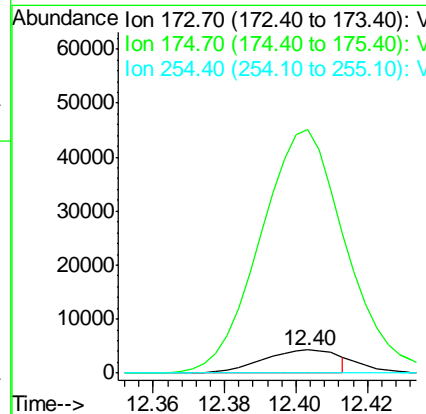
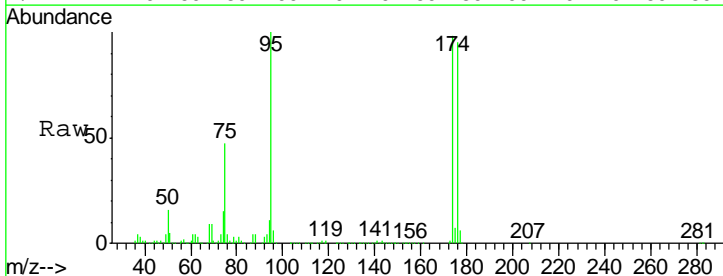
Ion	Ratio	Lower	Upper
117	100		
82	49.2	40.0	60.0
119	32.0	25.8	38.6

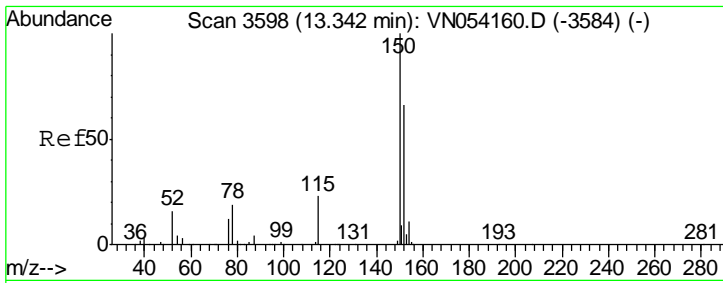


#71
 Bromoform
 Concen: 2.753 ug/l
 RT: 12.40 min Scan# 3306
 Delta R.T. 0.28 min
 Lab File: VN054271.D
 Acq: 14 Mar 2019 19:26

Tgt Ion:173 Resp: 6199

Ion	Ratio	Lower	Upper
173	100		
175	1038.8	24.4	73.2#
254	0.0	0.1	0.1#

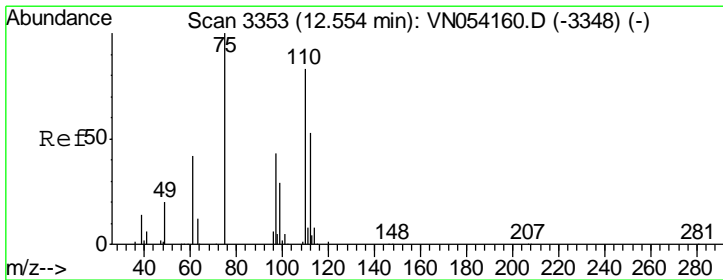
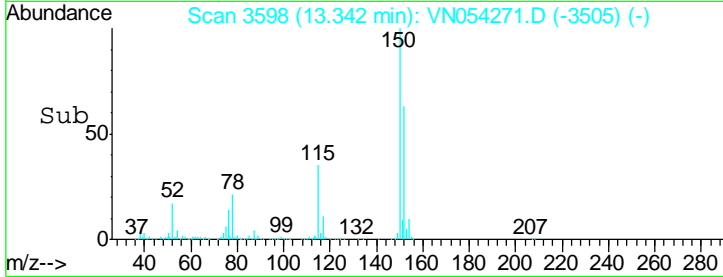
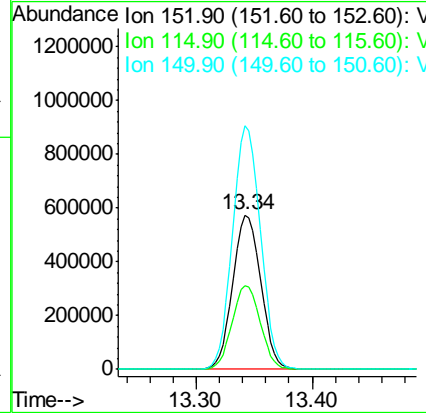
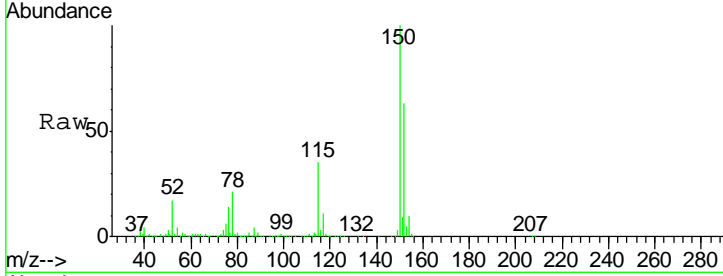




#72
 1,4-Dichlorobenzene-d4
 Concen: 50.000 ug/l
 RT: 13.34 min Scan# 3598
 Delta R.T. 0.00 min
 Lab File: VN054271.D
 Acq: 14 Mar 2019 19:26

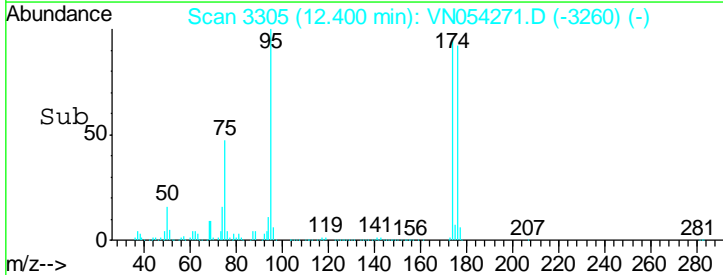
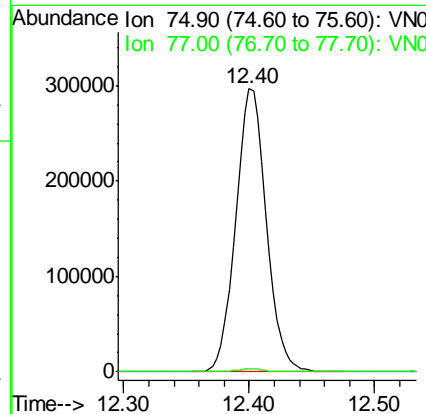
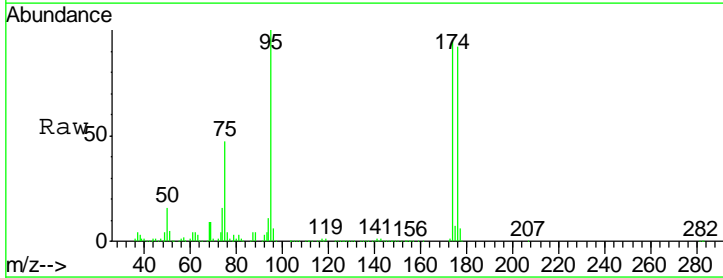
Instrument :
 MSVOA_N
 ClientSampled :
 MW-4

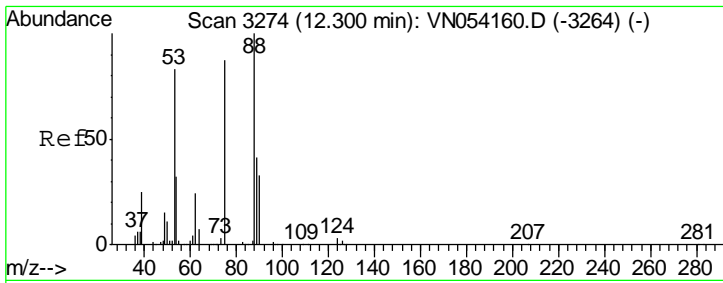
Tgt Ion	Resp	Lower	Upper
152	100		
115	54.4	27.2	81.6
150	157.2	0.0	349.2



#76
 1,2,3-Trichloropropane
 Concen: 35.660 ug/l
 RT: 12.40 min Scan# 3305
 Delta R.T. -0.15 min
 Lab File: VN054271.D
 Acq: 14 Mar 2019 19:26

Tgt Ion	Resp	Lower	Upper
75	100		
77	1.0	0.0	0.0#

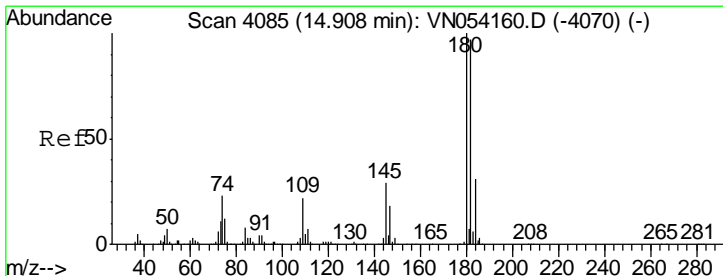
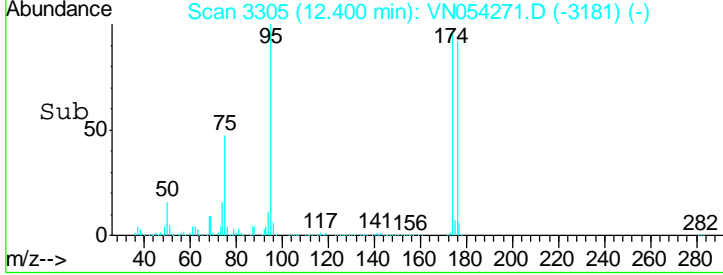
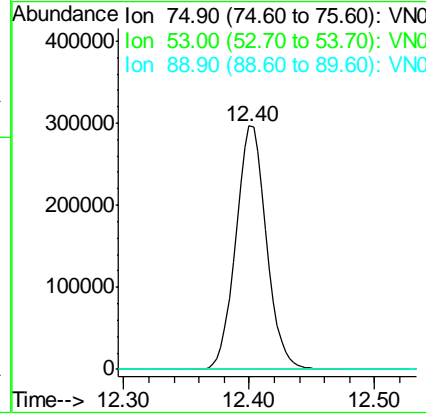
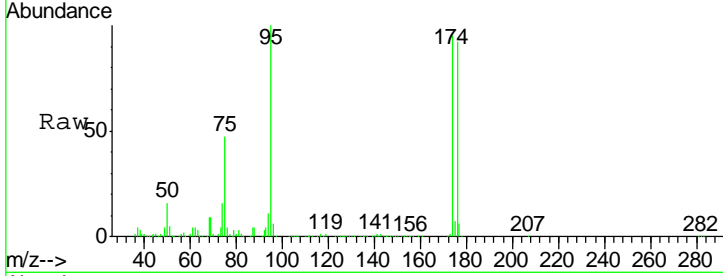




#81
 trans-1,4-Dichloro-2-butene
 Concen: 121.901 ug/l
 RT: 12.40 min Scan# 3305
 Delta R.T. 0.10 min
 Lab File: VN054271.D
 Acq: 14 Mar 2019 19:26

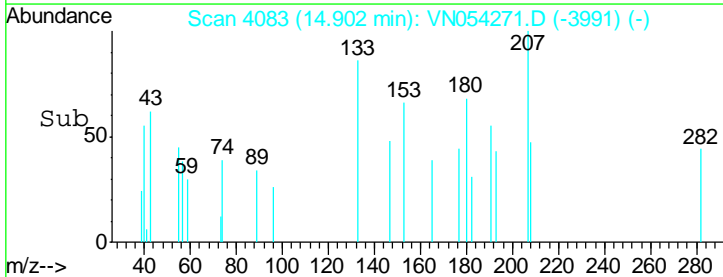
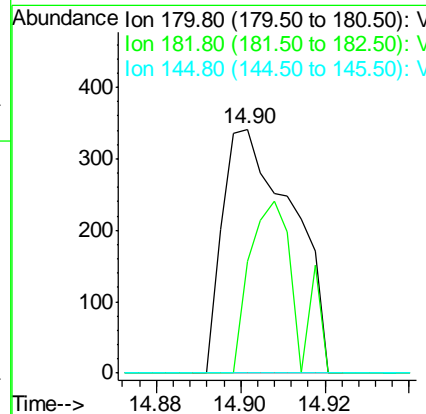
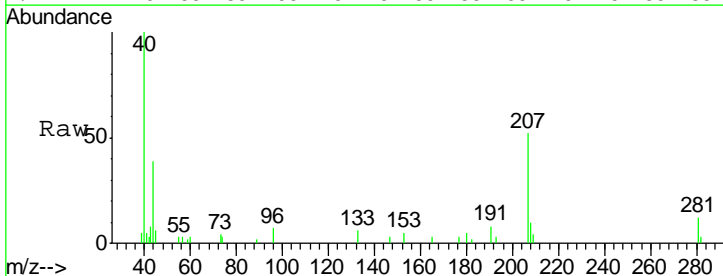
Instrument :
 MSVOA_N
 ClientSampled :
 MW-4

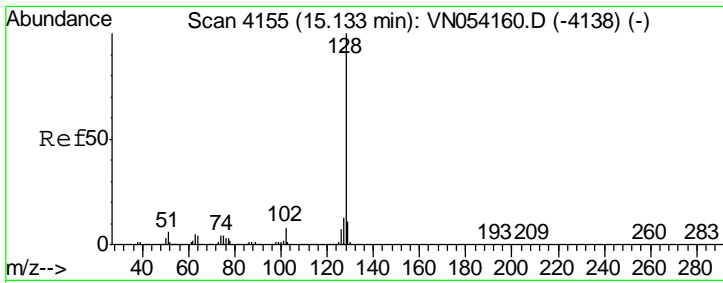
Tgt Ion	Resp	Lower	Upper
75	100		
53	0.0	76.2	114.2#
89	0.0	39.2	58.8#



#93
 1,2,4-Trichlorobenzene
 Concen: 2.535 ug/l
 RT: 14.90 min Scan# 4083
 Delta R.T. -0.01 min
 Lab File: VN054271.D
 Acq: 14 Mar 2019 19:26

Tgt Ion	Resp	Lower	Upper
180	100		
182	47.0	48.0	144.2#
145	0.0	14.2	42.8#





#95
 Naphthalene
 Concen: 5.283 ug/l
 RT: 15.13 min Scan# 4155
 Delta R.T. 0.00 min
 Lab File: VN054271.D
 Acq: 14 Mar 2019 19:26

Instrument : MSVOA_N
 ClientSampled : MW-4

Tot Ion:128 Resp: 81714

Ion	Ratio	Lower	Upper
128	100		
127	12.2	10.1	15.1
129	11.4	8.7	13.1

