

Data Path : Z:\VOASRV\HPCHEM1\MSVOA N\DATA\VN031419\
 Data File : VN054274.D
 Acq On : 14 Mar 2019 20:48
 Operator : JC/SP
 Sample : K1887-02
 Misc : 5.00mL/MSVOA N/WATER
 ALS Vial : 23 Sample Multiplier: 1

Instrument :
 MSVOA_N
 ClientSampled :
 MW-3

Quant Time: Mar 15 06:57:18 2019
 Quant Method : Z:\VOASRV\HPCHEM1\MSVOA_N\METHODS\82N031219W.M
 Quant Title : SW846 8260
 QLast Update : Wed Mar 13 03:33:31 2019
 Response via : Initial Calibration

Internal Standards	R.T.	QIon	Response	Conc	Units	Dev(Min)
1) Pentafluorobenzene	7.67	168	1429141	50.00	ug/l	0.00
34) 1,4-Difluorobenzene	8.59	114	2324993	50.00	ug/l	0.00
63) Chlorobenzene-d5	11.41	117	2387376	50.00	ug/l	0.00
72) 1,4-Dichlorobenzene-d4	13.35	152	942303	50.00	ug/l	0.00

System Monitoring Compounds

33) 1,2-Dichloroethane-d4	8.03	65	744542	49.06	ug/l	0.00
Spiked Amount				50.000		
			Recovery	=	98.12%	
35) Dibromofluoromethane	7.59	113	730102	48.69	ug/l	0.00
Spiked Amount				50.000		
			Recovery	=	97.38%	
50) Toluene-d8	10.09	98	2856316	51.58	ug/l	0.00
Spiked Amount				50.000		
			Recovery	=	103.16%	
62) 4-Bromofluorobenzene	12.40	95	1047385	54.05	ug/l	0.00
Spiked Amount				50.000		
			Recovery	=	108.10%	

Target Compounds

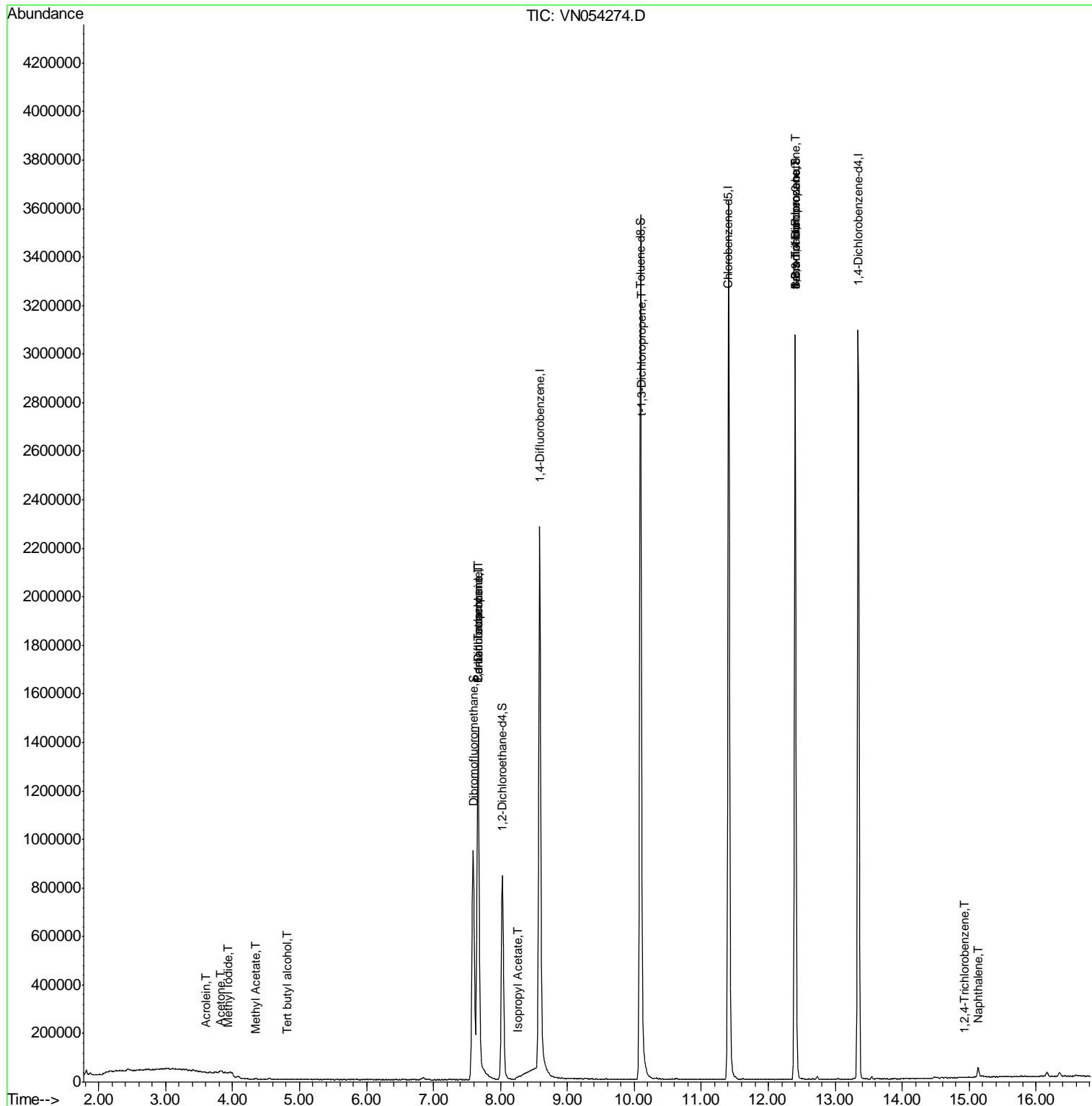
						Qvalue
10) Methyl Iodide	3.93	142	261	1.509	ug/l #	51
11) Tert butyl alcohol	4.82	59	315	0.303	ug/l #	70
13) Acrolein	3.61	56	362	0.367	ug/l	90
16) Acetone	3.82	43	12118	2.789	ug/l	88
18) Methyl Acetate	4.34	43	2807	0.319	ug/l #	75
31) Cyclohexane	7.67	56	20829	Below Cal	#	11
36) 1,1-Dichloropropene	7.67	75	81517	3.807	ug/l #	47
38) Carbon Tetrachloride	7.66	117	116668	5.196	ug/l #	16
43) Isopropyl Acetate	8.26	43	7303	0.338	ug/l #	60
53) t-1,3-Dichloropropene	10.11	75	196	1.994	ug/l #	5
71) Bromoform	12.40	173	6623	2.785	ug/l #	1
76) 1,2,3-Trichloropropane	12.40	75	495252	35.740	ug/l #	100
81) trans-1,4-Dichloro-2-buten	12.40	75	495252	122.176	ug/l #	11
93) 1,2,4-Trichlorobenzene	14.92	180	68	2.520	ug/l #	87
95) Naphthalene	15.13	128	38911	4.346	ug/l	99

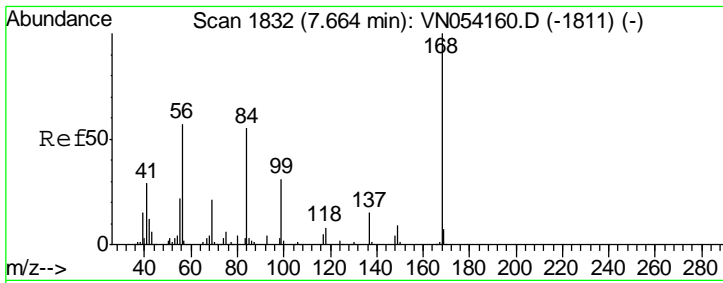
(#) = qualifier out of range (m) = manual integration (+) = signals summed

Data Path : Z:\VOASRV\HPCHEM1\MSVOA N\DATA\VN031419\
 Data File : VN054274.D
 Acq On : 14 Mar 2019 20:48
 Operator : JC/SP
 Sample : K1887-02
 Misc : 5.00mL/MSVOA N/WATER
 ALS Vial : 23 Sample Multiplier: 1

Instrument :
 MSVOA_N
 Client Sampled :
 MW-3

Quant Time: Mar 15 06:57:18 2019
 Quant Method : Z:\VOASRV\HPCHEM1\MSVOA_N\METHODS\82N031219W.M
 Quant Title : SW846 8260
 QLast Update : Wed Mar 13 03:33:31 2019
 Response via : Initial Calibration



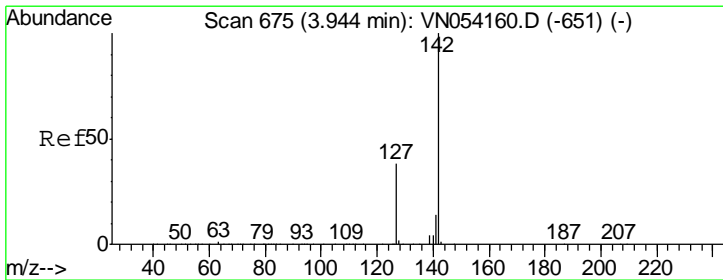
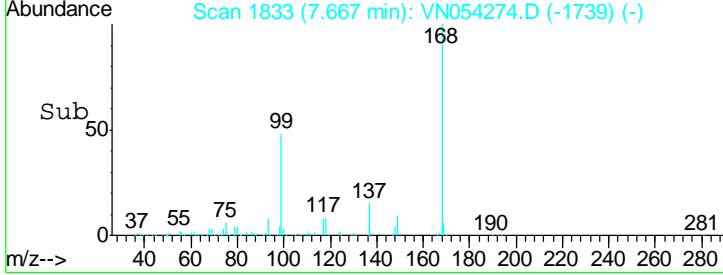
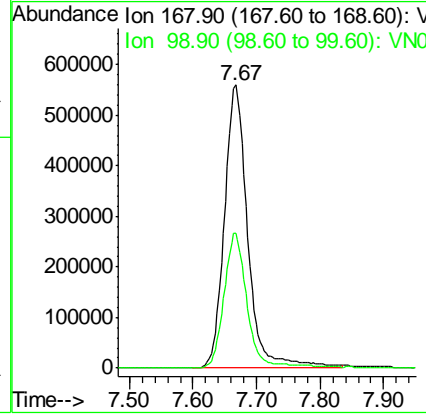
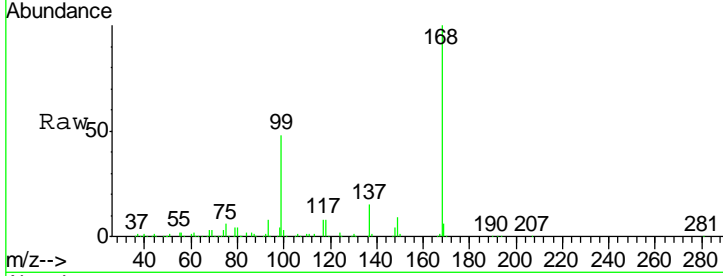


#1
 Pentafluorobenzene
 Concen: 50.000 ug/l
 RT: 7.67 min Scan# 1833
 Delta R.T. 0.00 min
 Lab File: VN054274.D
 Acq: 14 Mar 2019 20:48

Instrument :
 MSVOA_N
 ClientSampled :
 MW-3

Tgt Ion:168 Resp: 1429141

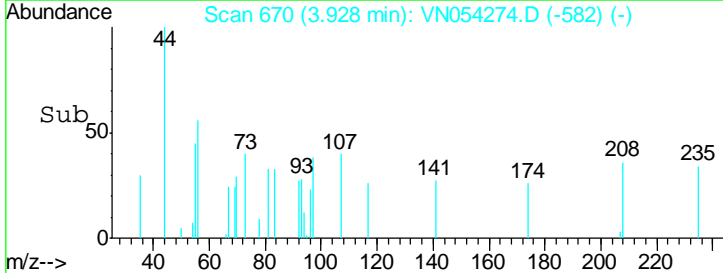
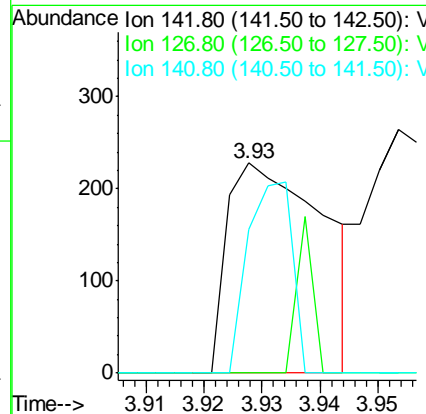
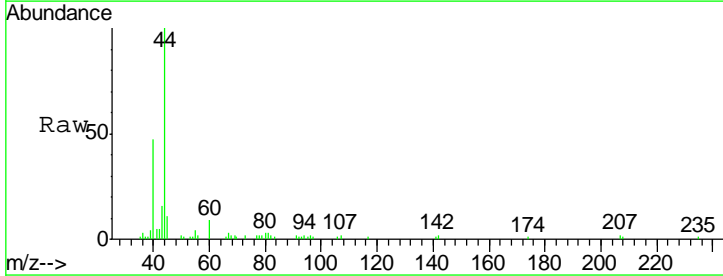
Ion	Ratio	Lower	Upper
168	100		
99	47.9	37.1	55.7

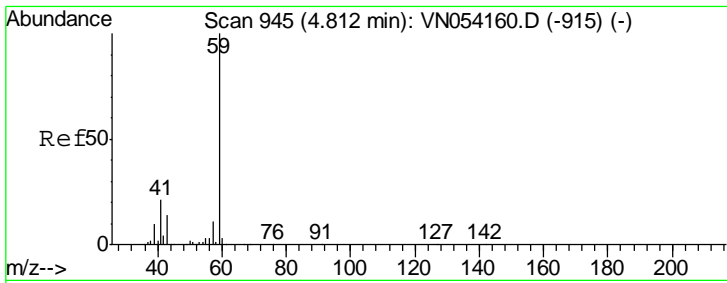


#10
 Methyl Iodide
 Concen: 1.509 ug/l
 RT: 3.93 min Scan# 670
 Delta R.T. -0.02 min
 Lab File: VN054274.D
 Acq: 14 Mar 2019 20:48

Tgt Ion:142 Resp: 261

Ion	Ratio	Lower	Upper
142	100		
127	12.6	30.3	45.5#
141	41.8	11.2	16.8#

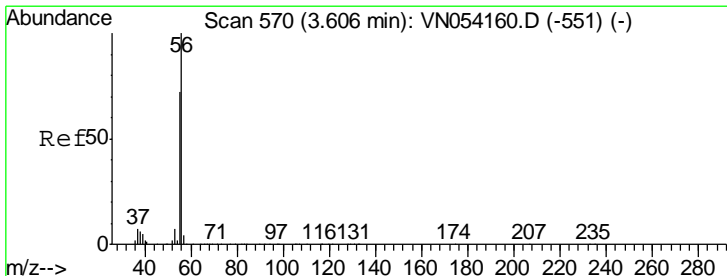
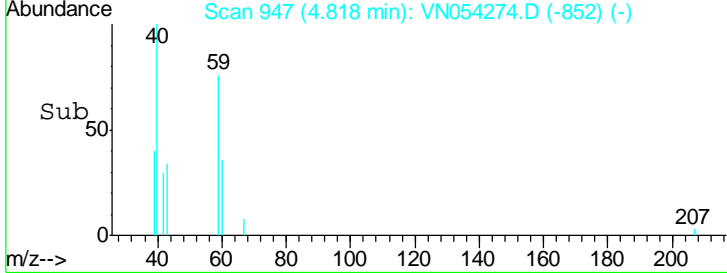
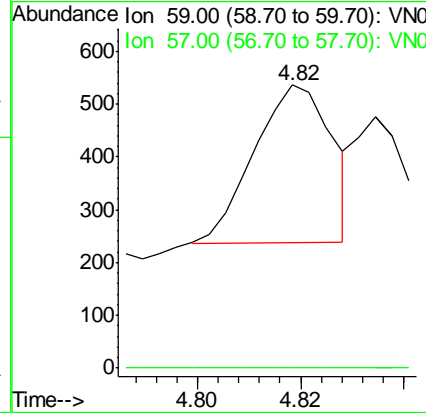
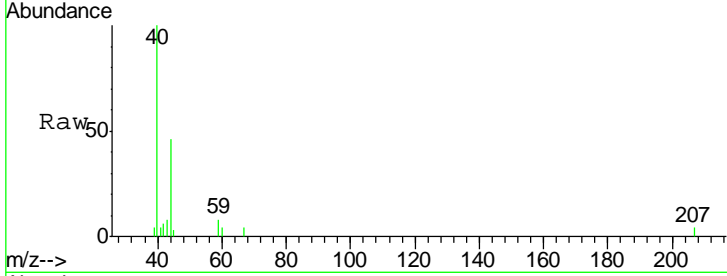




#11
 Tert butyl alcohol
 Concen: 0.303 ug/l
 RT: 4.82 min Scan# 947
 Delta R.T. 0.01 min
 Lab File: VN054274.D
 Acq: 14 Mar 2019 20:48

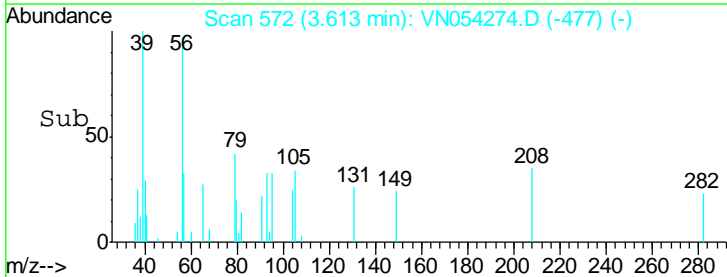
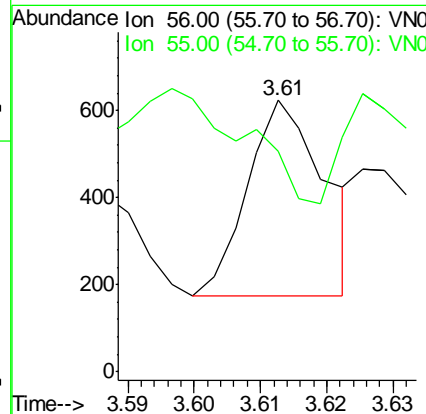
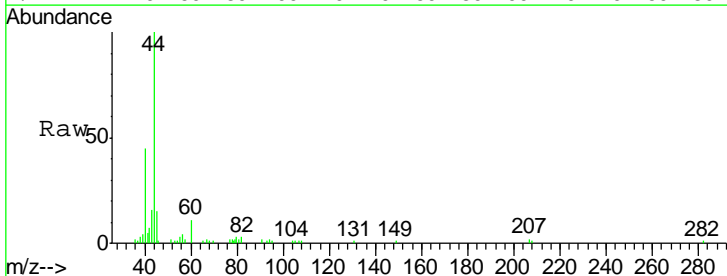
Instrument :
 MSVOA_N
 ClientSampled :
 MW-3

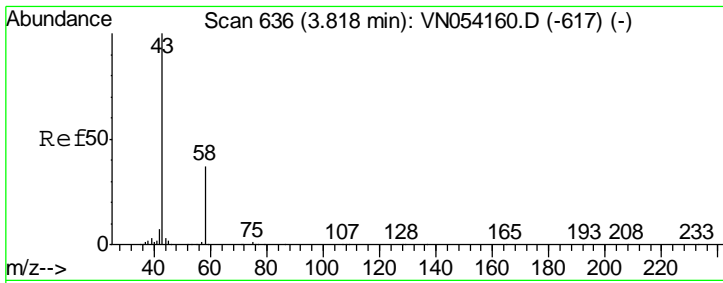
Tgt Ion: 59 Resp: 315
 Ion Ratio Lower Upper
 59 100
 57 0.0 9.0 13.6#



#13
 Acrolein
 Concen: 0.367 ug/l
 RT: 3.61 min Scan# 572
 Delta R.T. 0.01 min
 Lab File: VN054274.D
 Acq: 14 Mar 2019 20:48

Tgt Ion: 56 Resp: 362
 Ion Ratio Lower Upper
 56 100
 55 79.6 56.7 85.1

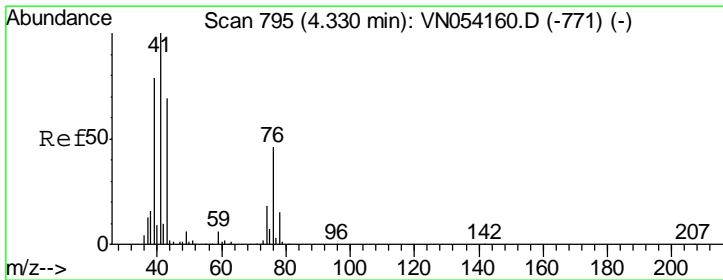
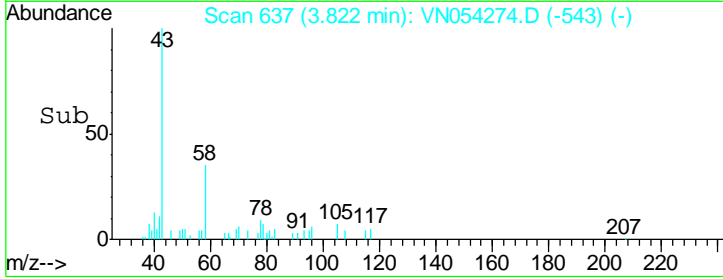
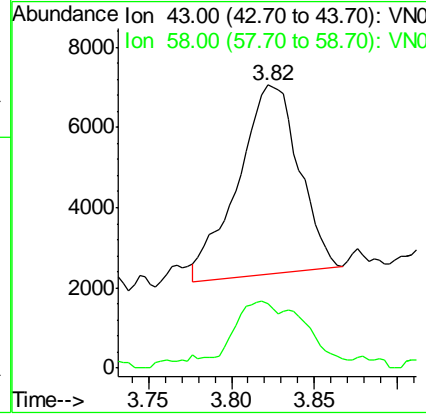
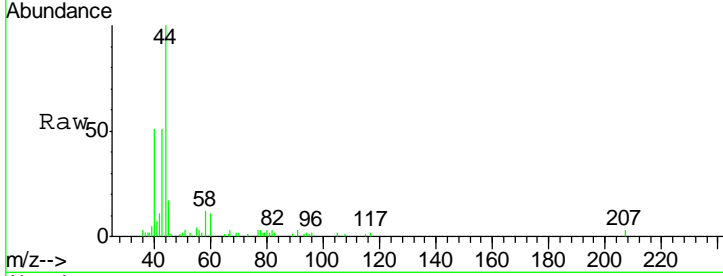




#16
 Acetone
 Concen: 2.789 ug/l
 RT: 3.82 min Scan# 637
 Delta R.T. 0.00 min
 Lab File: VN054274.D
 Acq: 14 Mar 2019 20:48

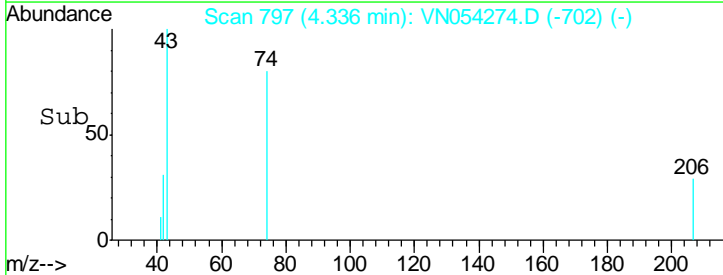
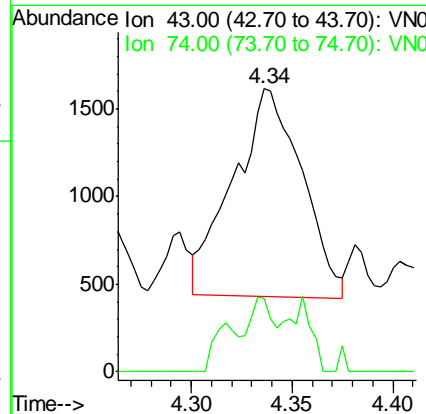
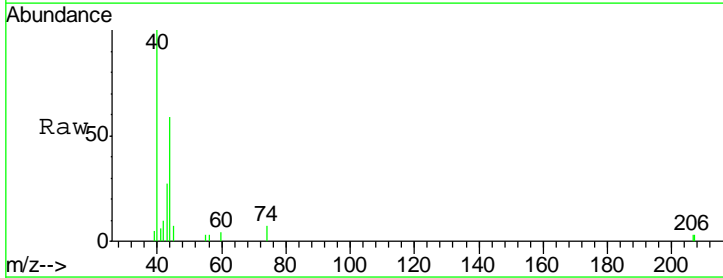
Instrument :
 MSVOA_N
 ClientSampled :
 MW-3

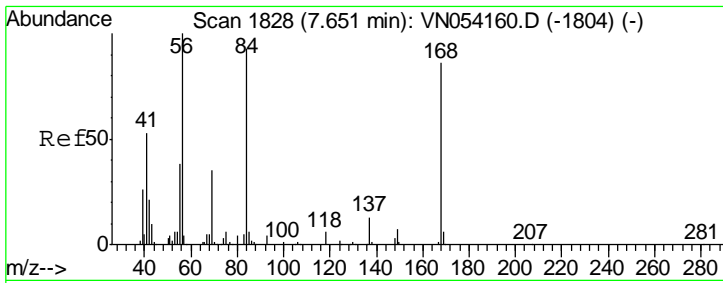
Tgt Ion: 43 Resp: 12118
 Ion Ratio Lower Upper
 43 100
 58 30.3 29.9 44.9



#18
 Methyl Acetate
 Concen: 0.319 ug/l
 RT: 4.34 min Scan# 797
 Delta R.T. 0.01 min
 Lab File: VN054274.D
 Acq: 14 Mar 2019 20:48

Tgt Ion: 43 Resp: 2807
 Ion Ratio Lower Upper
 43 100
 74 13.1 20.8 31.2#

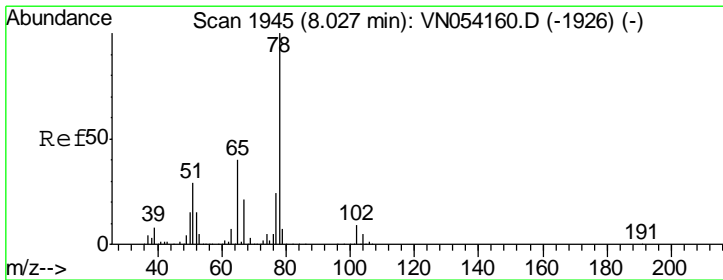
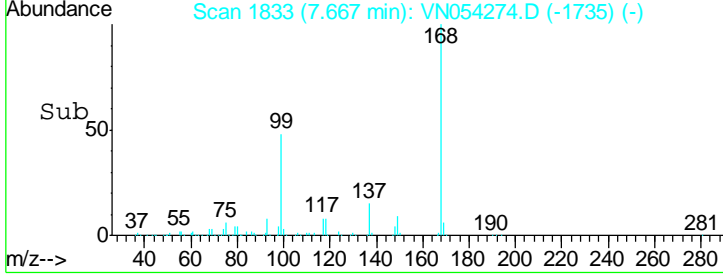
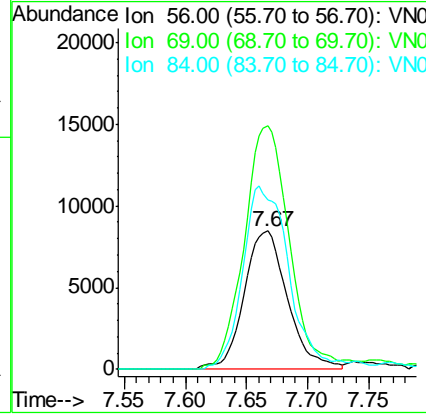
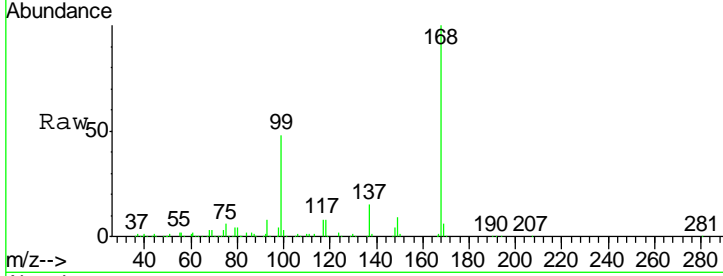




#31
 Cyclohexane
 Concen: Below Cal
 RT: 7.67 min Scan# 1833
 Delta R.T. 0.02 min
 Lab File: VN054274.D
 Acq: 14 Mar 2019 20:48

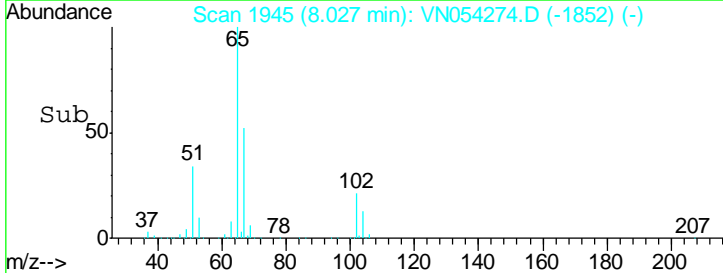
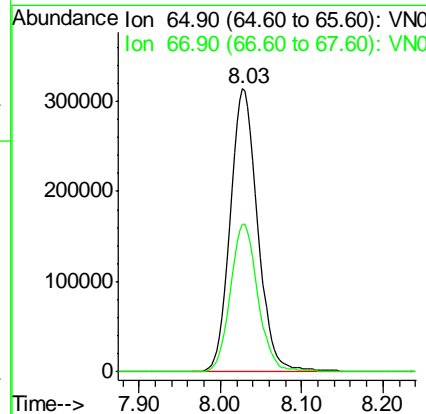
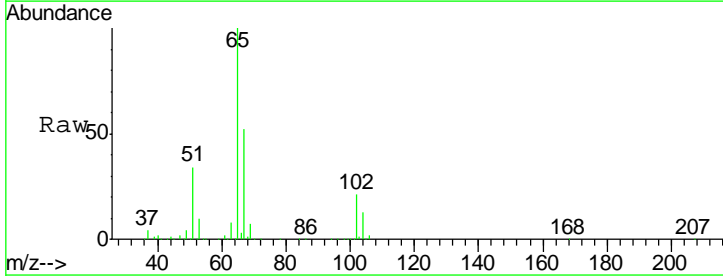
Instrument :
 MSVOA_N
 ClientSampled :
 MW-3

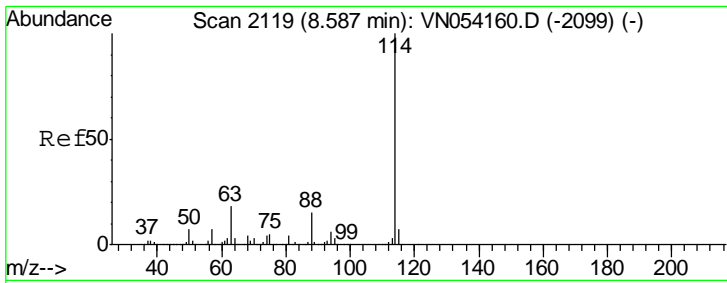
Tgt Ion	Resp	Lower	Upper
56	100		
69	176.3	27.8	41.6#
84	122.5	74.6	111.8#



#33
 1,2-Dichloroethane-d4
 Concen: 49.056 ug/l
 RT: 8.03 min Scan# 1945
 Delta R.T. 0.00 min
 Lab File: VN054274.D
 Acq: 14 Mar 2019 20:48

Tgt Ion	Resp	Lower	Upper
65	100		
67	52.5	0.0	104.6



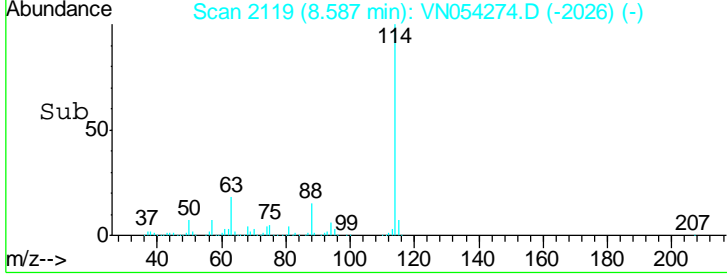
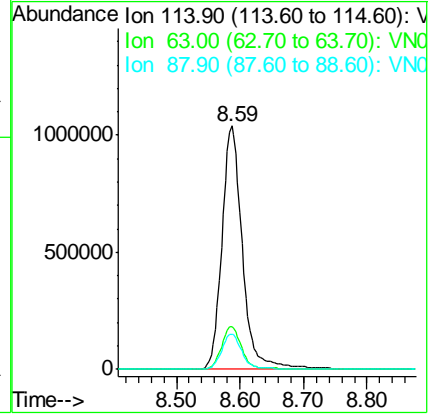
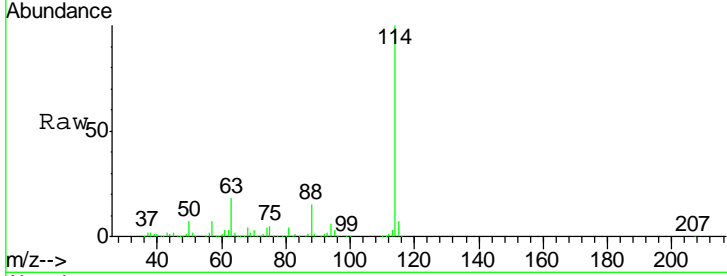


#34
 1,4-Difluorobenzene
 Concen: 50.000 ug/l
 RT: 8.59 min Scan# 2119
 Delta R.T. 0.00 min
 Lab File: VN054274.D
 Acq: 14 Mar 2019 20:48

Instrument : MSVOA_N
 ClientSampled : MW-3

Tgt Ion:114 Resp: 2324993

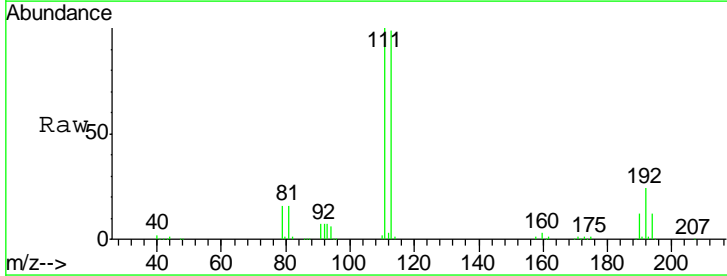
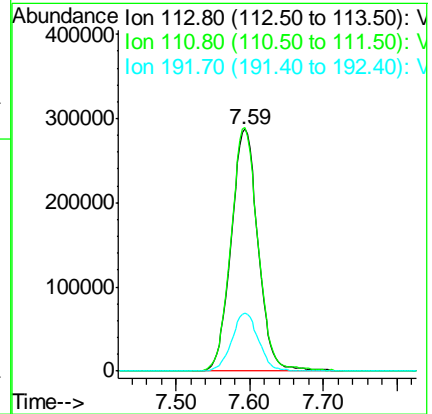
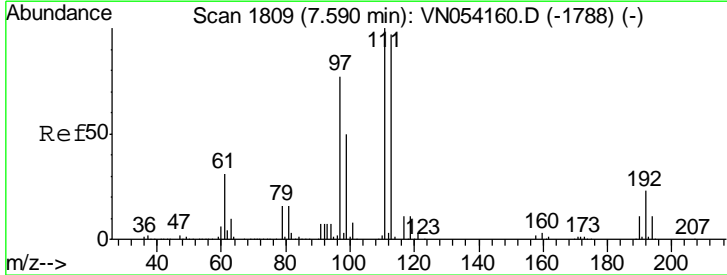
Ion	Ratio	Lower	Upper
114	100		
63	17.6	0.0	35.2
88	14.6	0.0	30.2

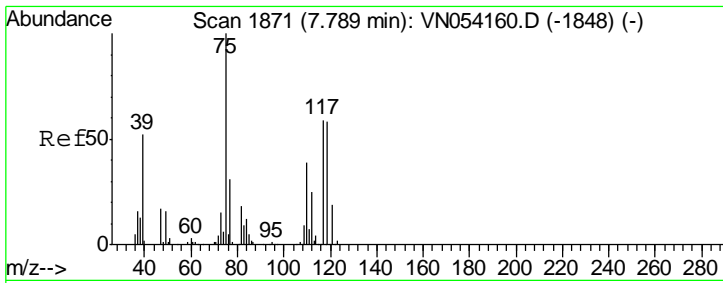


#35
 Dibromofluoromethane
 Concen: 48.689 ug/l
 RT: 7.59 min Scan# 1810
 Delta R.T. 0.00 min
 Lab File: VN054274.D
 Acq: 14 Mar 2019 20:48

Tgt Ion:113 Resp: 730102

Ion	Ratio	Lower	Upper
113	100		
111	100.9	82.2	123.4
192	23.8	19.2	28.8

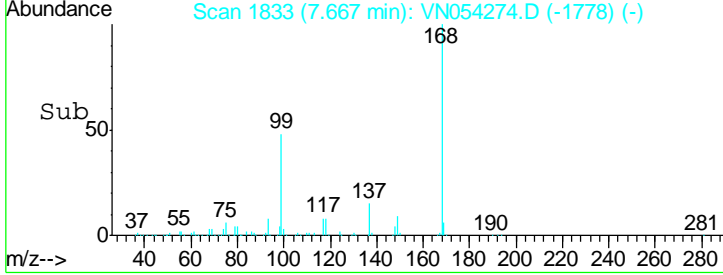
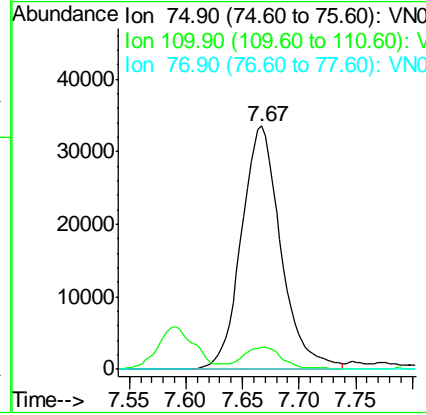
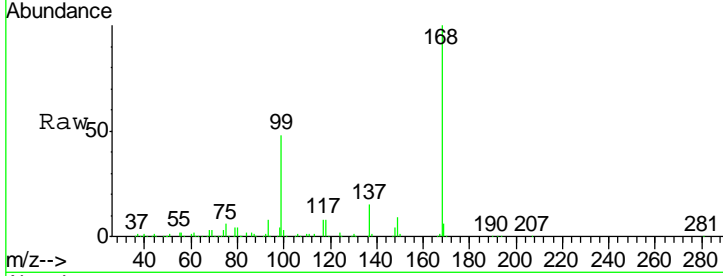




#36
 1,1-Dichloropropene
 Concen: 3.807 ug/l
 RT: 7.67 min Scan# 1833
 Delta R.T. -0.12 min
 Lab File: VN054274.D
 Acq: 14 Mar 2019 20:48

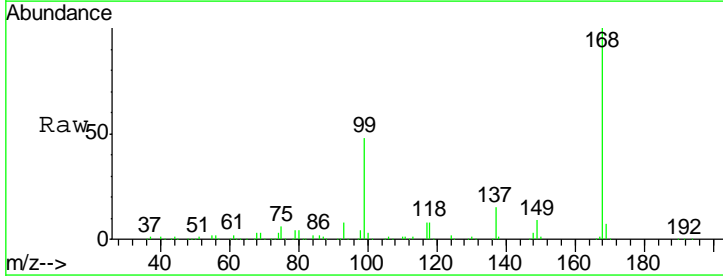
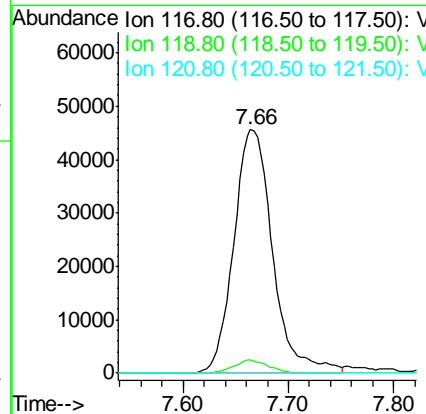
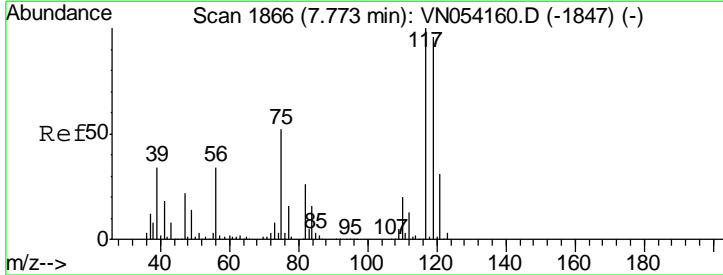
Instrument : MSVOA_N
 ClientSampled : MW-3

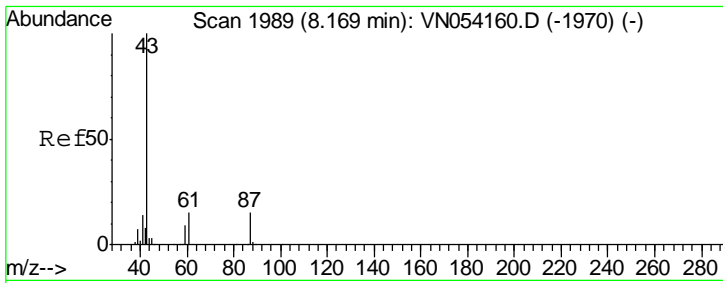
Tgt Ion	Resp	Lower	Upper
75	100		
110	8.1	19.1	57.5#
77	0.0	25.0	37.4#



#38
 Carbon Tetrachloride
 Concen: 5.196 ug/l
 RT: 7.66 min Scan# 1832
 Delta R.T. -0.11 min
 Lab File: VN054274.D
 Acq: 14 Mar 2019 20:48

Tgt Ion	Resp	Lower	Upper
117	100		
119	5.3	76.3	114.5#
121	0.0	24.6	36.8#

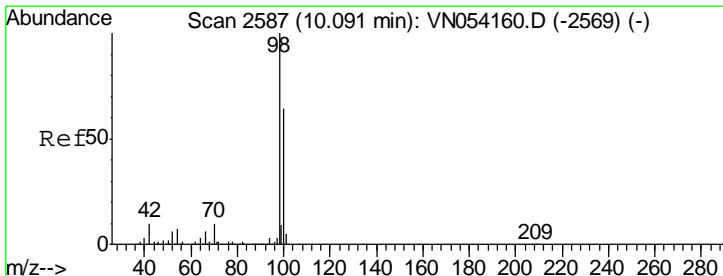
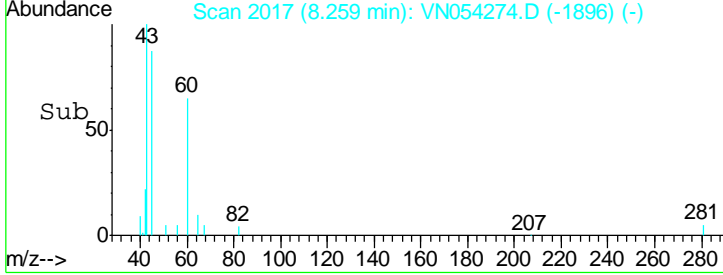
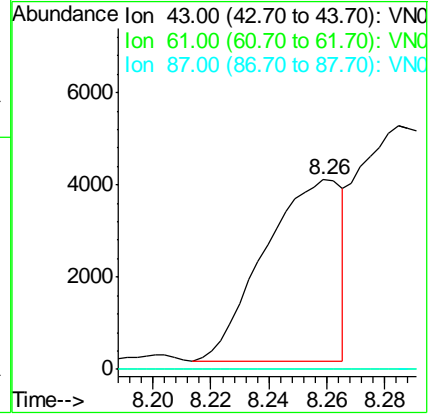
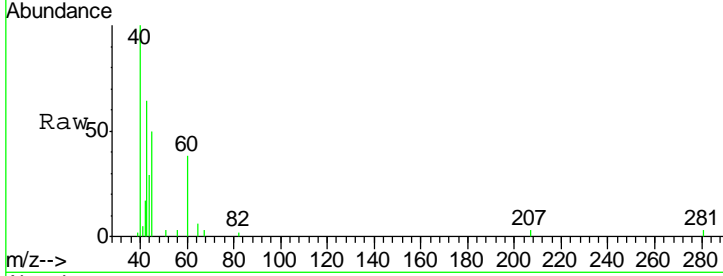




#43
 Isopropyl Acetate
 Concen: 0.338 ug/l
 RT: 8.26 min Scan# 2017
 Delta R.T. 0.09 min
 Lab File: VN054274.D
 Acq: 14 Mar 2019 20:48

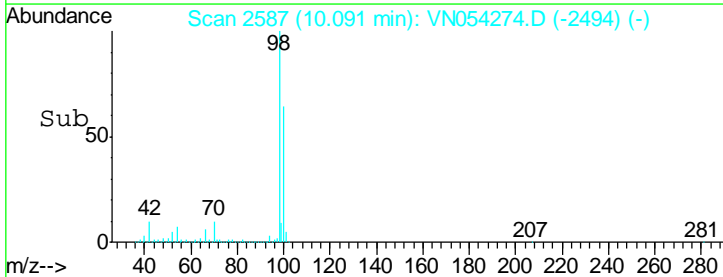
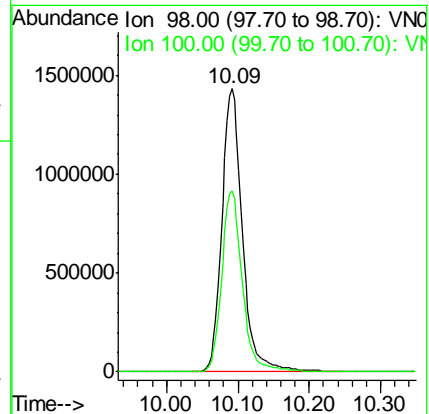
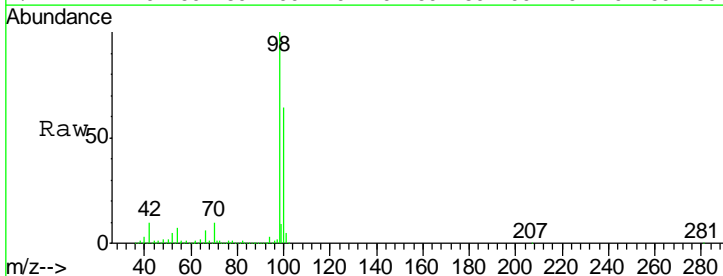
Instrument :
 MSVOA_N
ClientSampled :
 MW-3

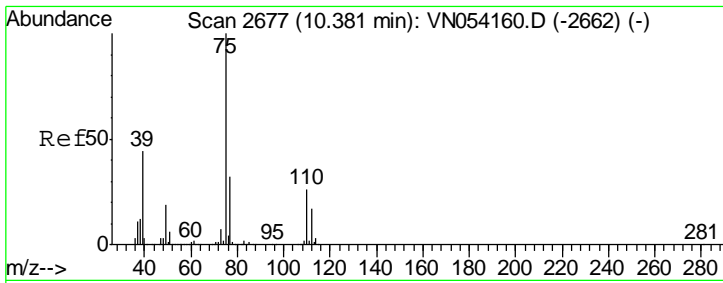
Tgt Ion	Resp	Lower	Upper
43	7303		
61	0.0	15.8	23.8#
87	0.0	12.0	18.0#



#50
 Toluene-d8
 Concen: 51.577 ug/l
 RT: 10.09 min Scan# 2587
 Delta R.T. 0.00 min
 Lab File: VN054274.D
 Acq: 14 Mar 2019 20:48

Tgt Ion	Resp	Lower	Upper
98	2856316		
100	64.4	51.2	76.8

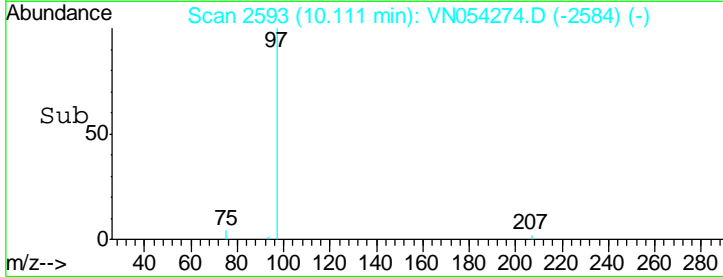
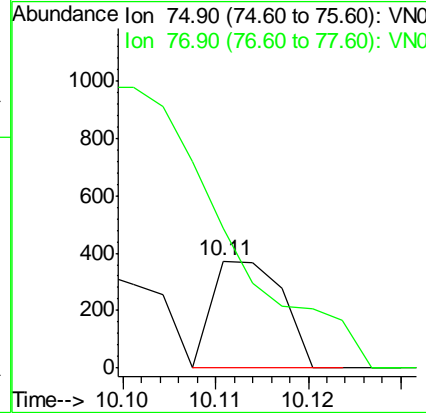
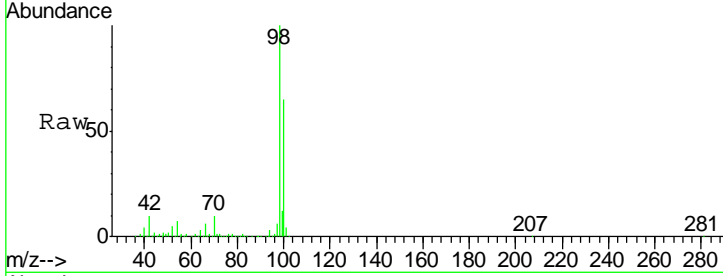




#53
 t-1,3-Dichloropropene
 Concen: 1.994 ug/l
 RT: 10.11 min Scan# 2593
 Delta R.T. -0.27 min
 Lab File: VN054274.D
 Acq: 14 Mar 2019 20:48

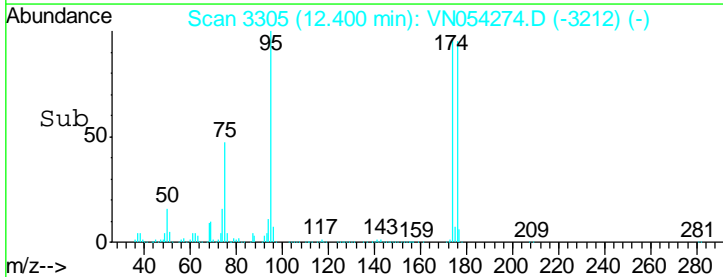
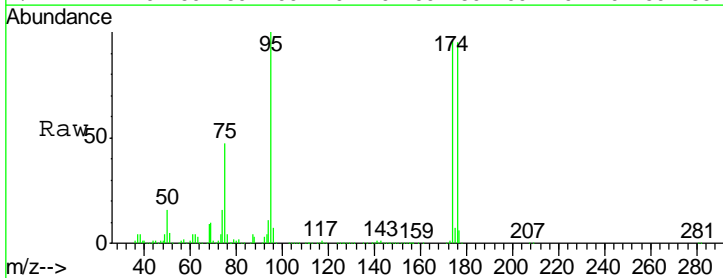
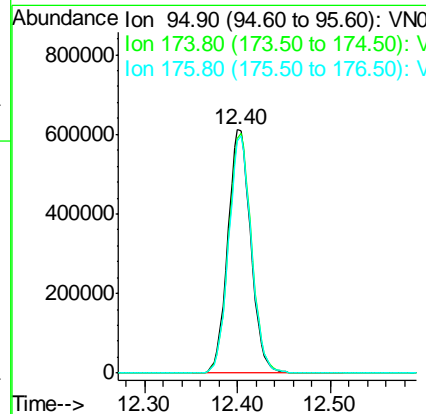
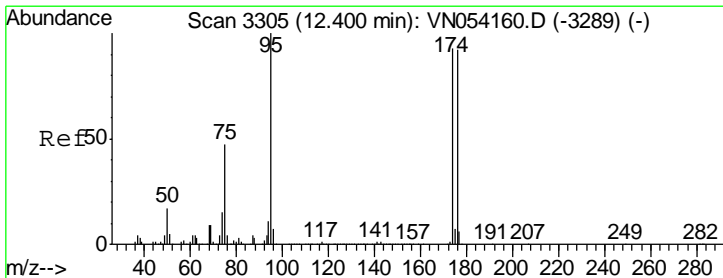
Instrument :
 MSVOA_N
 ClientSampled :
 MW-3

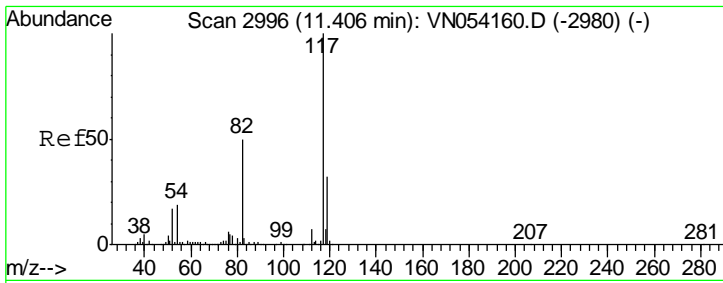
Tgt Ion	Resp	Lower	Upper
75	100		
77	85.3	25.8	38.8#



#62
 4-Bromofluorobenzene
 Concen: 54.052 ug/l
 RT: 12.40 min Scan# 3305
 Delta R.T. 0.00 min
 Lab File: VN054274.D
 Acq: 14 Mar 2019 20:48

Tgt Ion	Resp	Lower	Upper
95	100		
174	98.4	0.0	191.0
176	96.6	0.0	187.4



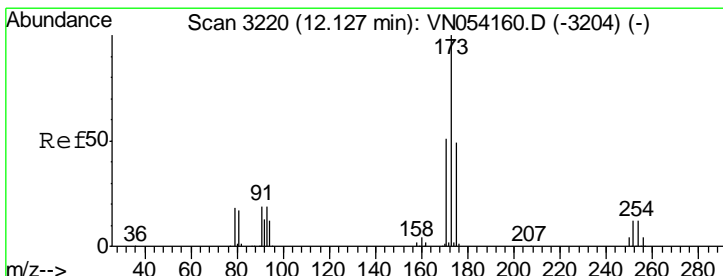
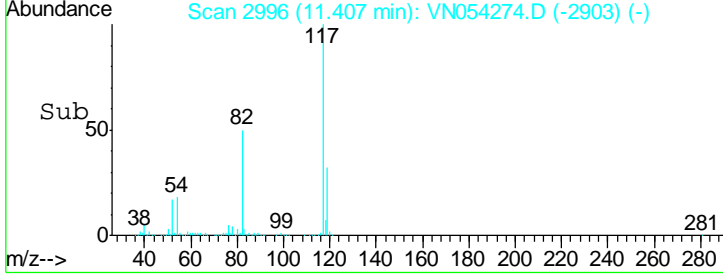
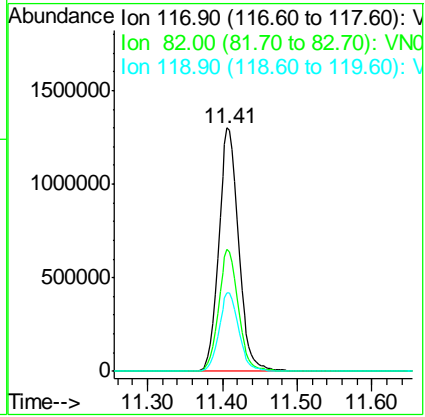
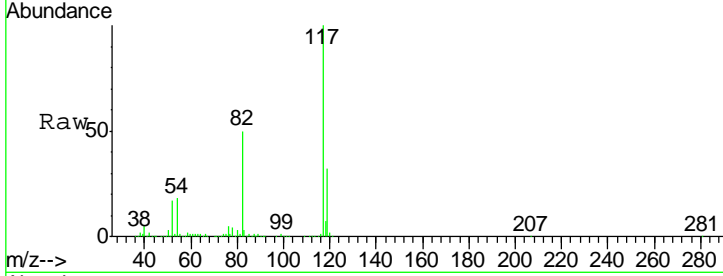


#63
 Chlorobenzene-d5
 Concen: 50.000 ug/l
 RT: 11.41 min Scan# 2996
 Delta R.T. 0.00 min
 Lab File: VN054274.D
 Acq: 14 Mar 2019 20:48

Instrument : MSVOA_N
 ClientSampled : MW-3

Tgt Ion: 117 Resp: 2387376

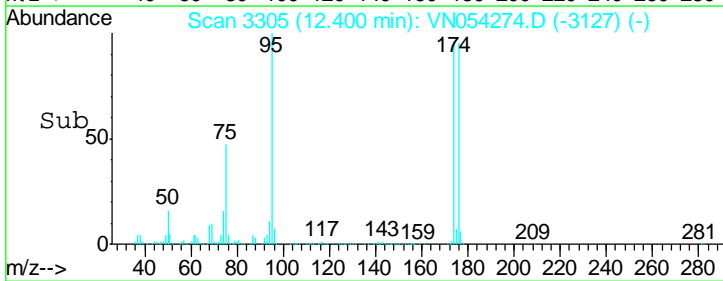
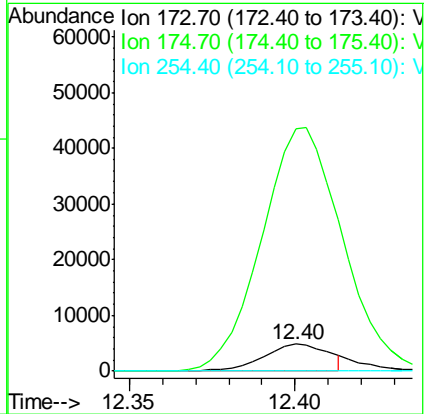
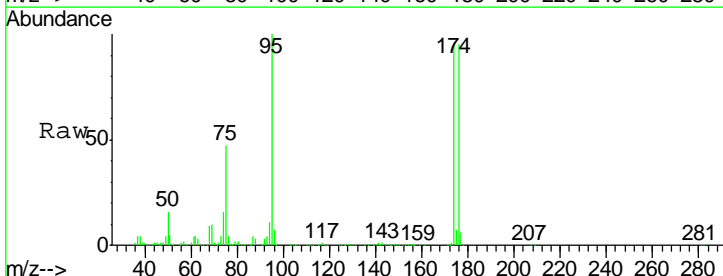
Ion	Ratio	Lower	Upper
117	100		
82	50.1	40.0	60.0
119	32.4	25.8	38.6

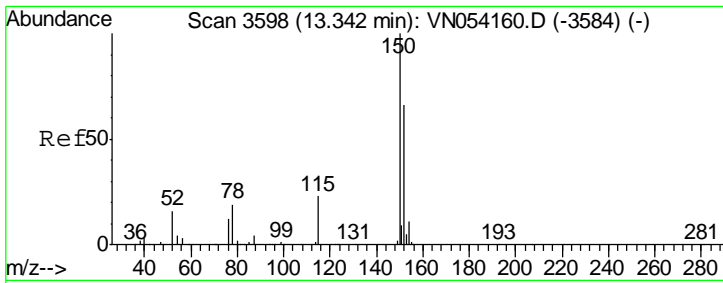


#71
 Bromoform
 Concen: 2.785 ug/l
 RT: 12.40 min Scan# 3305
 Delta R.T. 0.27 min
 Lab File: VN054274.D
 Acq: 14 Mar 2019 20:48

Tgt Ion: 173 Resp: 6623

Ion	Ratio	Lower	Upper
173	100		
175	960.5	24.4	73.2#
254	0.0	0.1	0.1#

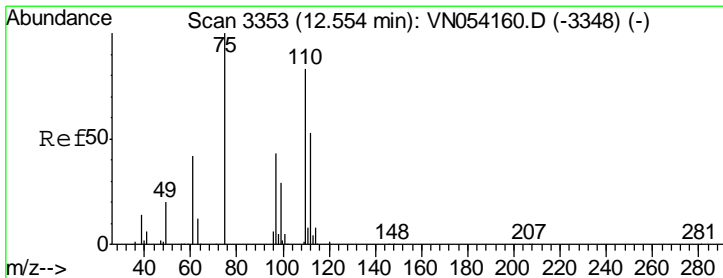
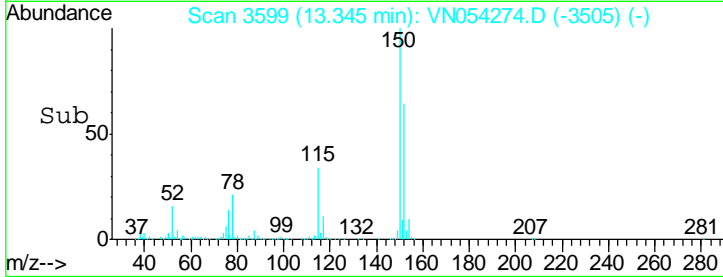
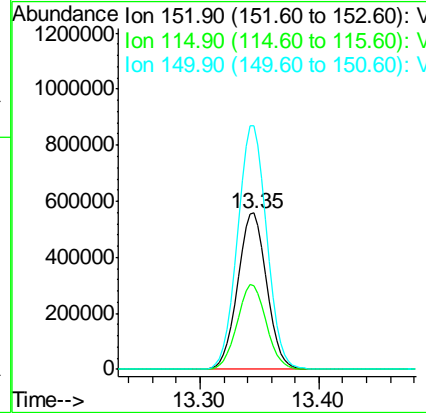
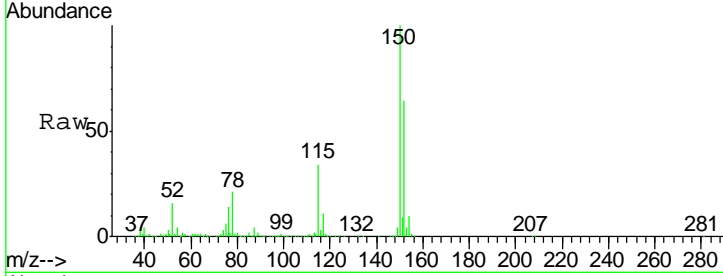




#72
 1,4-Dichlorobenzene-d4
 Concen: 50.000 ug/l
 RT: 13.35 min Scan# 3599
 Delta R.T. 0.00 min
 Lab File: VN054274.D
 Acq: 14 Mar 2019 20:48

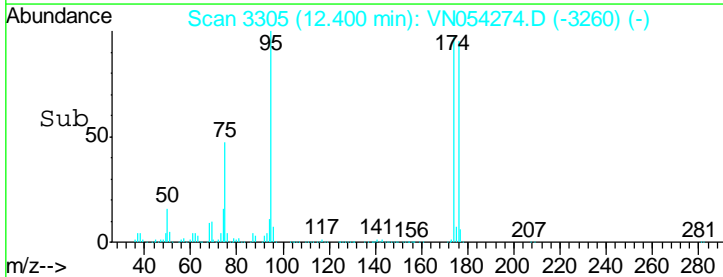
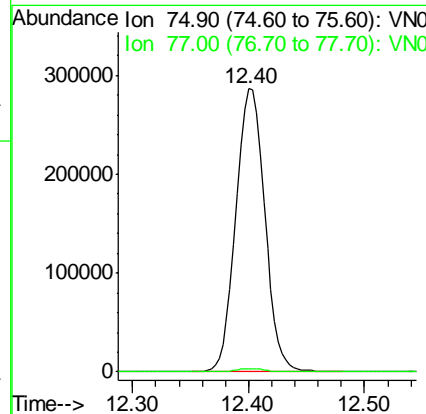
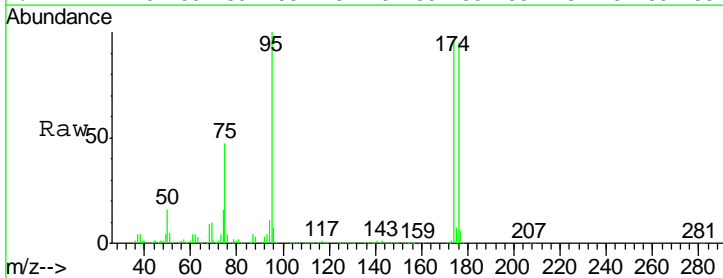
Instrument :
 MSVOA_N
 ClientSampled :
 MW-3

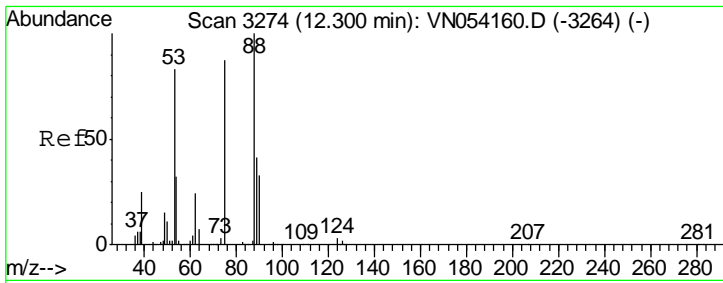
Tgt Ion	Resp	Lower	Upper
152	100		
115	54.2	27.2	81.6
150	157.2	0.0	349.2



#76
 1,2,3-Trichloropropane
 Concen: 35.740 ug/l
 RT: 12.40 min Scan# 3305
 Delta R.T. -0.15 min
 Lab File: VN054274.D
 Acq: 14 Mar 2019 20:48

Tgt Ion	Resp	Lower	Upper
75	100		
77	1.1	0.0	0.0#

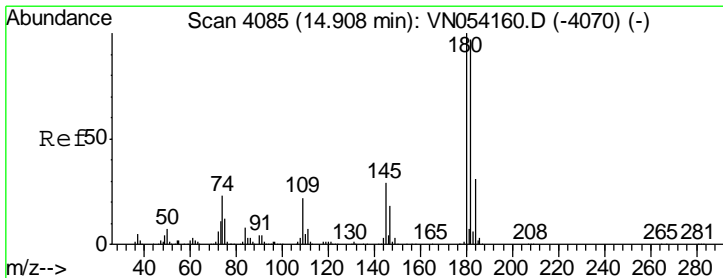
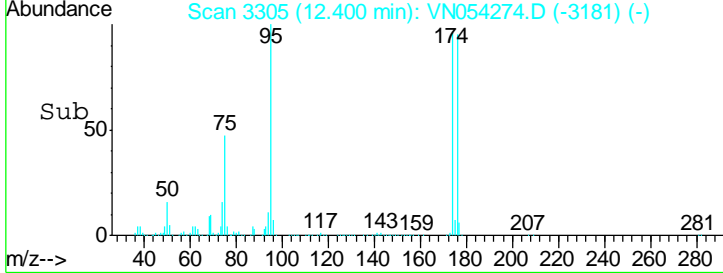
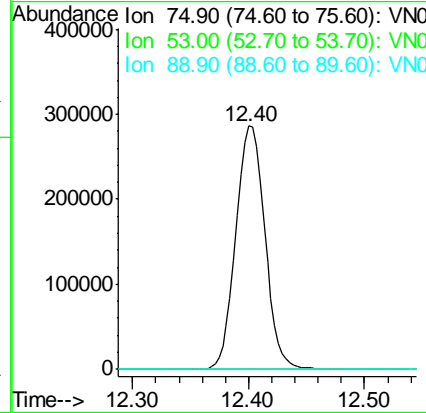
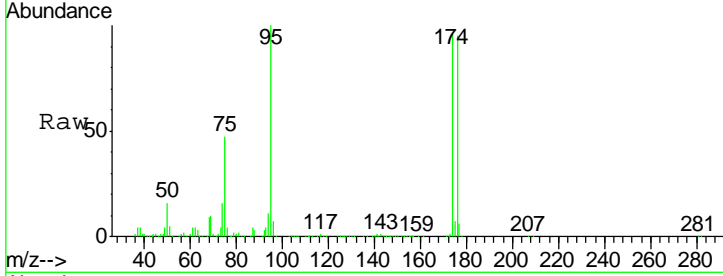




#81
 trans-1,4-Dichloro-2-butene
 Concen: 122.176 ug/l
 RT: 12.40 min Scan# 3305
 Delta R.T. 0.10 min
 Lab File: VN054274.D
 Acq: 14 Mar 2019 20:48

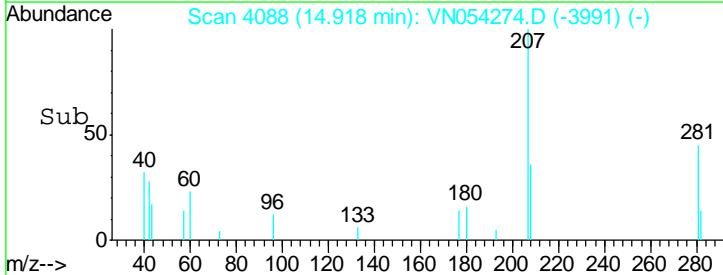
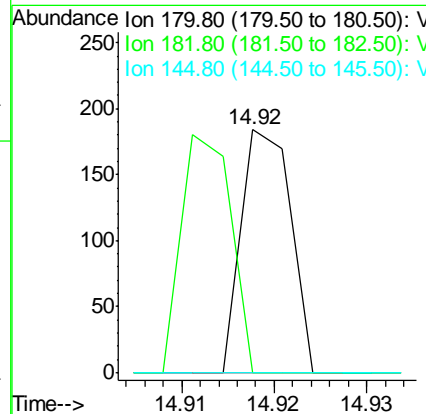
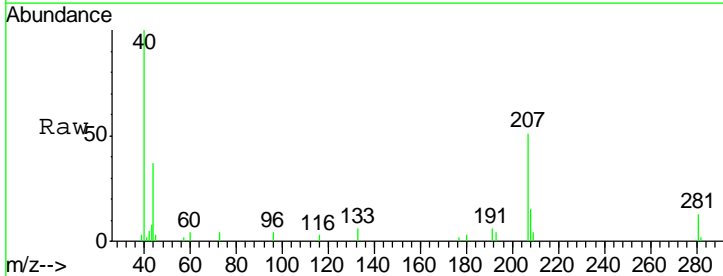
Instrument : MSVOA_N
 ClientSampled : MW-3

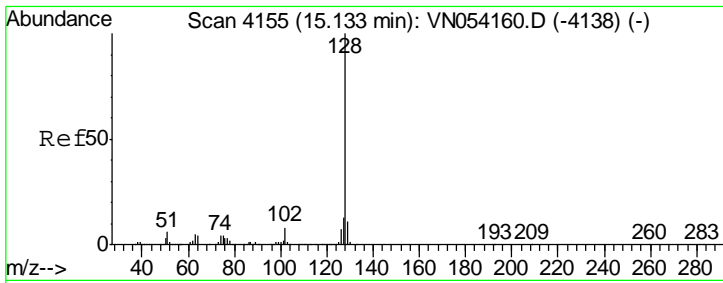
Tgt Ion	Resp	Lower	Upper
75	100		
53	0.0	76.2	114.2#
89	0.0	39.2	58.8#



#93
 1,2,4-Trichlorobenzene
 Concen: 2.520 ug/l
 RT: 14.92 min Scan# 4088
 Delta R.T. 0.01 min
 Lab File: VN054274.D
 Acq: 14 Mar 2019 20:48

Tgt Ion	Resp	Lower	Upper
180	100		
182	97.1	48.0	144.2
145	0.0	14.2	42.8#





#95
 Naphthalene
 Concen: 4.346 ug/l
 RT: 15.13 min Scan# 4155
 Delta R.T. 0.00 min
 Lab File: VN054274.D
 Acq: 14 Mar 2019 20:48

Instrument : MSVOA_N
 ClientSampled : MW-3

Tot Ion	128	Resp	38911
Ion	Ratio	Lower	Upper
128	100		
127	12.4	10.1	15.1
129	10.4	8.7	13.1

