

Data Path : Z:\VOASRV\HPCHEM1\MSVOA\_N\DATA\VN031419\  
 Data File : VN054302.D  
 Acq On : 15 Mar 2019 10:29  
 Operator : JC/SP  
 Sample : K1902-12 50X  
 Misc : 5.00mL/MSVOA\_N/WATER  
 ALS Vial : 53 Sample Multiplier: 1

Instrument :  
 MSVOA\_N  
 ClientSampleId :  
 30240-41-42-43-44

Quant Time: Mar 15 18:47:25 2019  
 Quant Method : Z:\VOASRV\HPCHEM1\MSVOA\_N\METHODS\82N031219W.M  
 Quant Title : SW846 8260  
 QLast Update : Wed Mar 13 03:33:31 2019  
 Response via : Initial Calibration

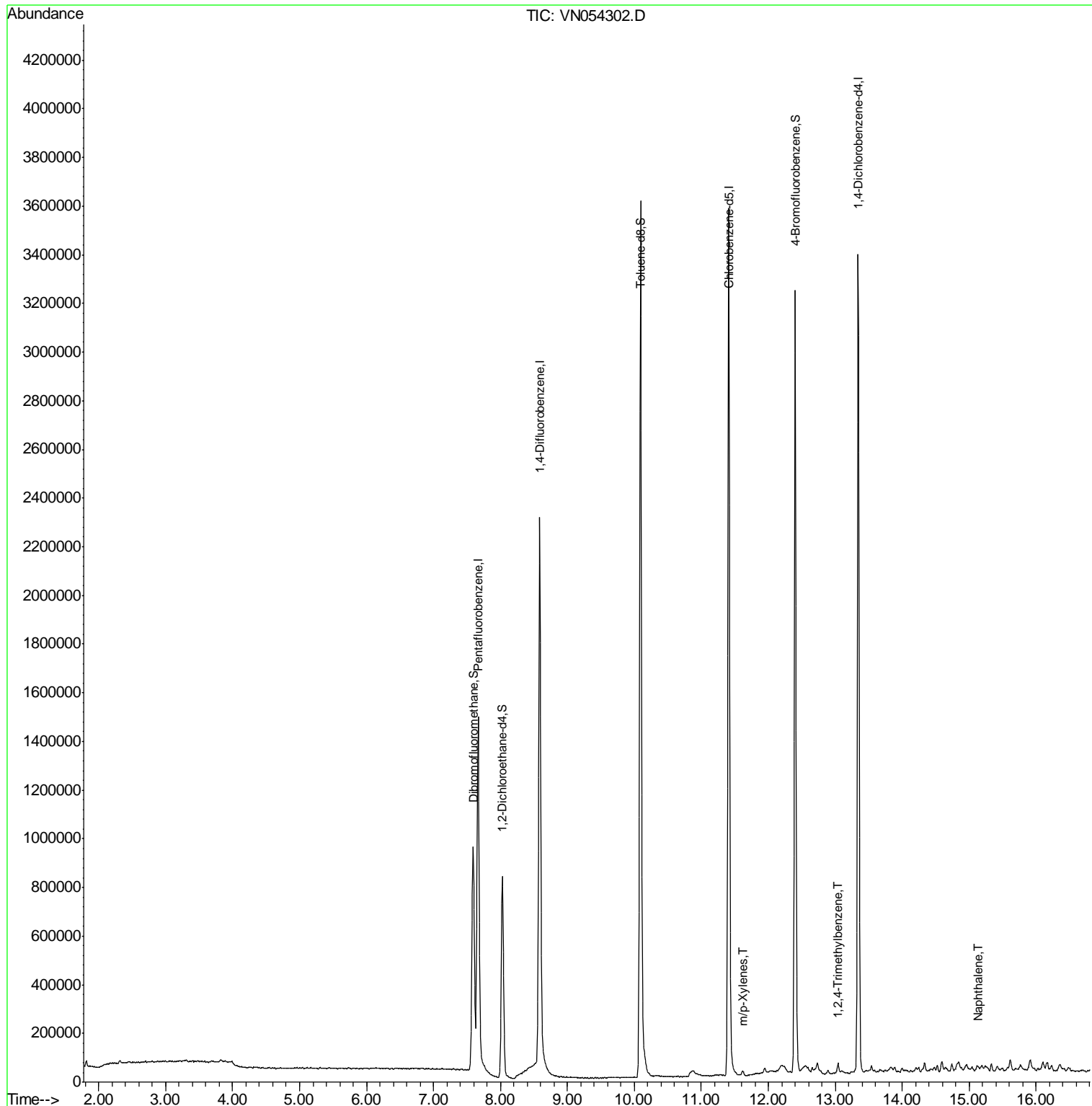
Internal Standards	R.T.	QIon	Response	Conc	Units	Dev(Min)
1) Pentafluorobenzene	7.67	168	1431965	50.00	ug/l	0.00
34) 1,4-Difluorobenzene	8.59	114	2364693	50.00	ug/l	0.00
63) Chlorobenzene-d5	11.41	117	2479502	50.00	ug/l	0.00
72) 1,4-Dichlorobenzene-d4	13.34	152	1023513	50.00	ug/l	0.00
System Monitoring Compounds						
33) 1,2-Dichloroethane-d4	8.03	65	727786	47.86	ug/l	0.00
Spiked Amount	50.000		Recovery	=	95.72%	
35) Dibromofluoromethane	7.59	113	713406	46.78	ug/l	0.00
Spiked Amount	50.000		Recovery	=	93.56%	
50) Toluene-d8	10.09	98	2921848	51.87	ug/l	0.00
Spiked Amount	50.000		Recovery	=	103.74%	
62) 4-Bromofluorobenzene	12.40	95	1108465	56.24	ug/l	0.00
Spiked Amount	50.000		Recovery	=	112.48%	
Target Compounds						
68) m/p-Xylenes	11.62	106	7079	0.201	ug/l	89
84) 1,2,4-Trimethylbenzene	13.04	105	26592	0.398	ug/l	94
95) Naphthalene	15.13	128	12140	3.721	ug/l #	87

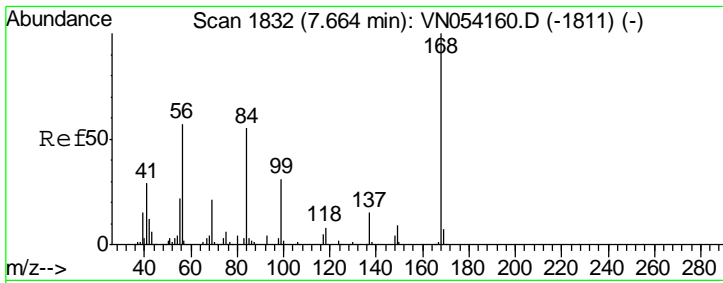
(#) = qualifier out of range (m) = manual integration (+) = signals summed

Data Path : Z:\VOASRV\HPCHEM1\MSVOA\_N\DATA\VN031419\  
 Data File : VN054302.D  
 Acq On : 15 Mar 2019 10:29  
 Operator : JC/SP  
 Sample : K1902-12 50X  
 Misc : 5.00mL/MSVOA\_N/WATER  
 ALS Vial : 53 Sample Multiplier: 1

Instrument :  
 MSVOA\_N  
 ClientSampleId :  
 30240-41-42-43-44

Quant Time: Mar 15 18:47:25 2019  
 Quant Method : Z:\VOASRV\HPCHEM1\MSVOA\_N\METHODS\82N031219W.M  
 Quant Title : SW846 8260  
 QLast Update : Wed Mar 13 03:33:31 2019  
 Response via : Initial Calibration

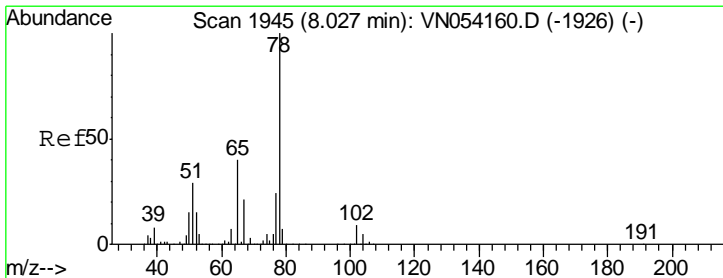
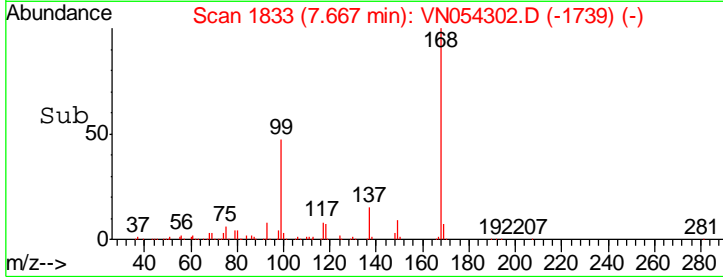
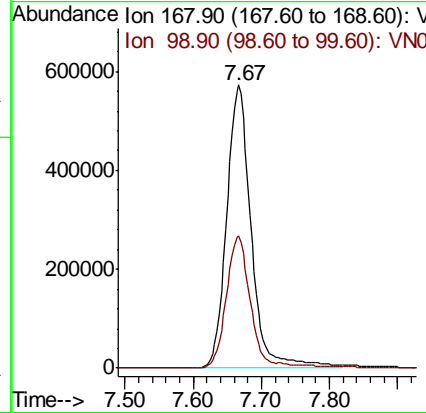
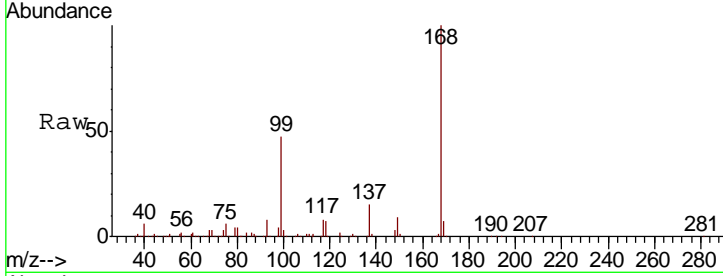




#1  
 Pentafluorobenzene  
 Concen: 50.000 ug/l  
 RT: 7.67 min Scan# 1833  
 Delta R.T. 0.00 min  
 Lab File: VN054302.D  
 Acq: 15 Mar 2019 10:29

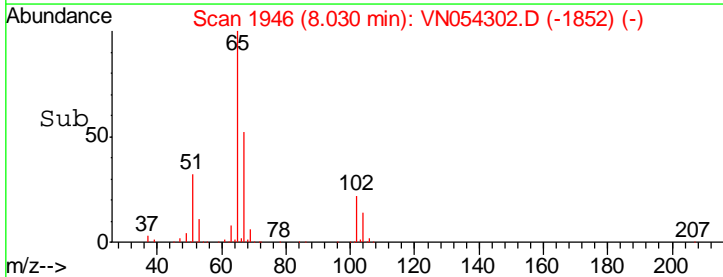
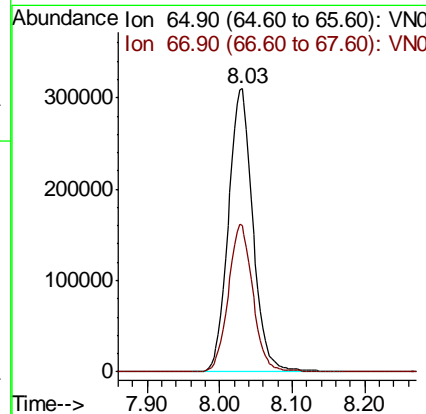
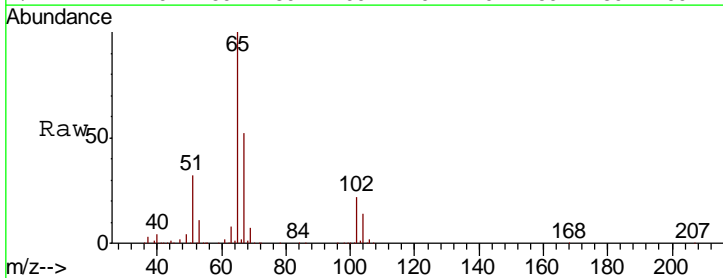
Instrument :  
 MSVOA\_N  
 ClientSampled :  
 30240-41-42-43-44

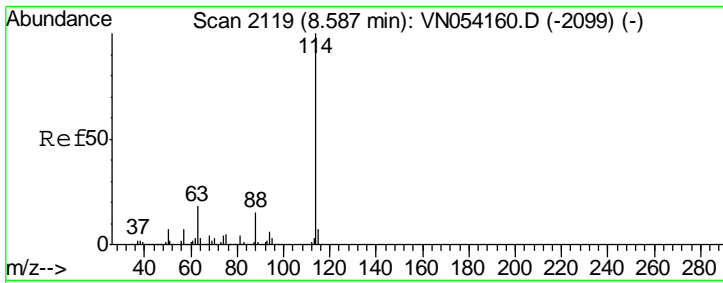
Tgt Ion: 168 Resp: 1431965  
 Ion Ratio Lower Upper  
 168 100  
 99 46.7 37.1 55.7



#33  
 1,2-Dichloroethane-d4  
 Concen: 47.857 ug/l  
 RT: 8.03 min Scan# 1946  
 Delta R.T. 0.00 min  
 Lab File: VN054302.D  
 Acq: 15 Mar 2019 10:29

Tgt Ion: 65 Resp: 727786  
 Ion Ratio Lower Upper  
 65 100  
 67 52.2 0.0 104.6



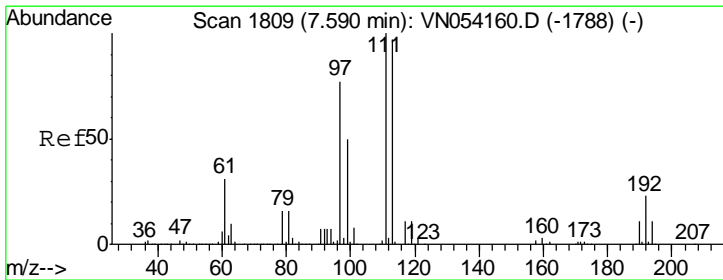
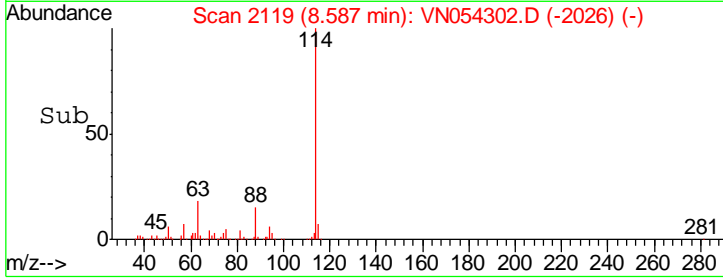
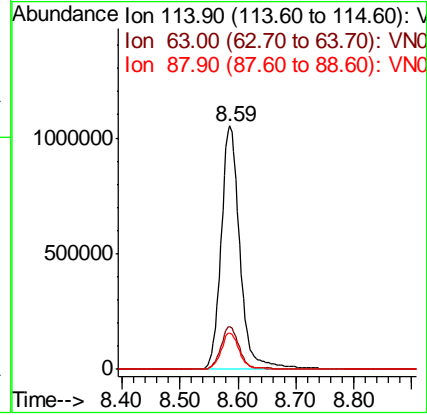
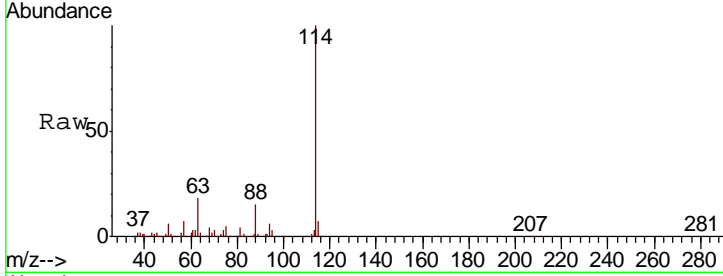


#34  
 1,4-Difluorobenzene  
 Concen: 50.000 ug/l  
 RT: 8.59 min Scan# 2119  
 Delta R.T. -0.00 min  
 Lab File: VN054302.D  
 Acq: 15 Mar 2019 10:29

Instrument :  
 MSVOA\_N  
 ClientSampled :  
 30240-41-42-43-44

Tgt Ion:114 Resp: 2364693

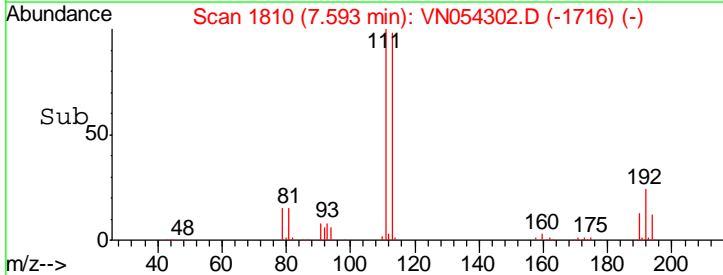
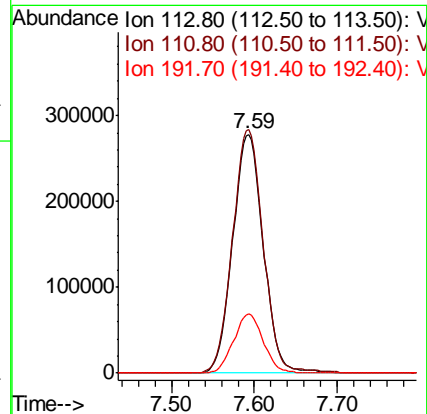
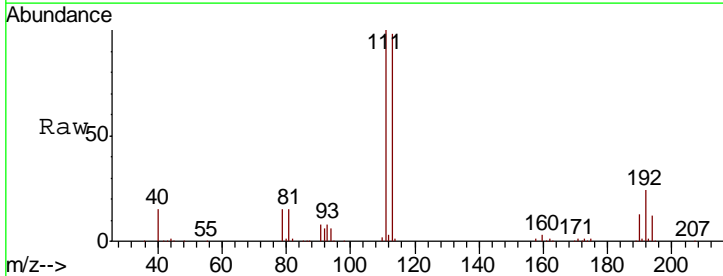
Ion	Ratio	Lower	Upper
114	100		
63	17.7	0.0	35.2
88	15.0	0.0	30.2

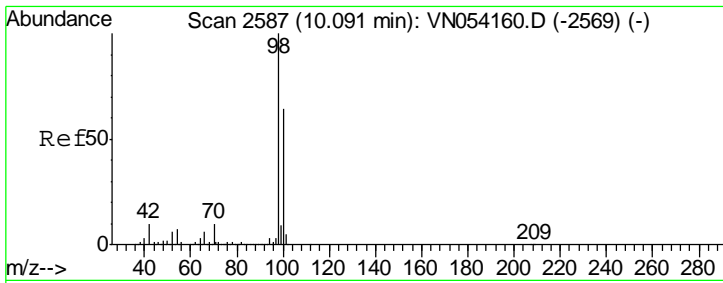


#35  
 Dibromofluoromethane  
 Concen: 46.777 ug/l  
 RT: 7.59 min Scan# 1810  
 Delta R.T. 0.00 min  
 Lab File: VN054302.D  
 Acq: 15 Mar 2019 10:29

Tgt Ion:113 Resp: 713406

Ion	Ratio	Lower	Upper
113	100		
111	102.5	82.2	123.4
192	24.3	19.2	28.8



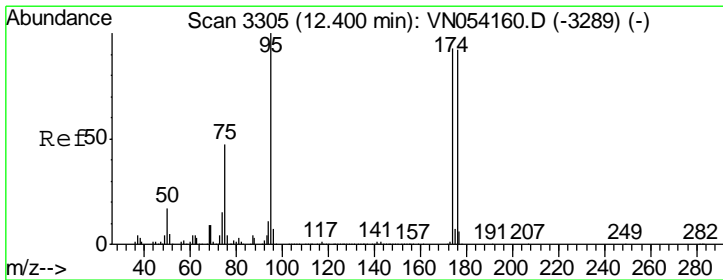
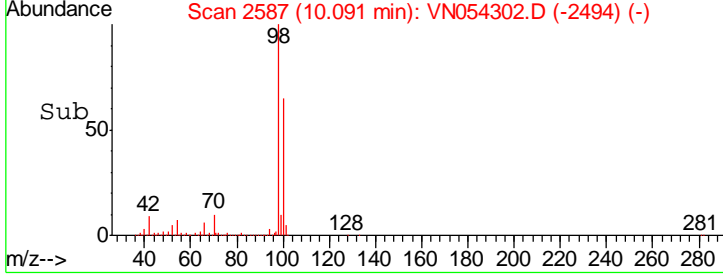
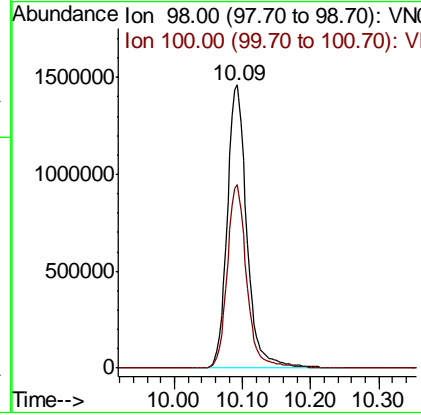
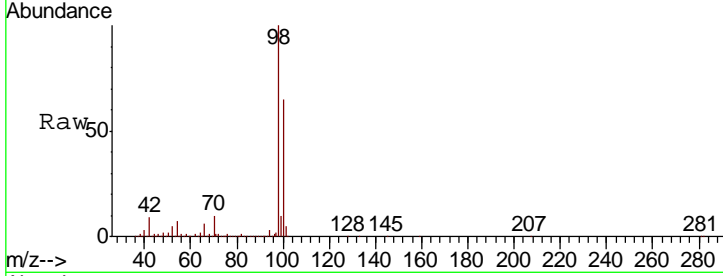


#50  
 Toluene-d8  
 Concen: 51.875 ug/l  
 RT: 10.09 min Scan# 2587  
 Delta R.T. -0.00 min  
 Lab File: VN054302.D  
 Acq: 15 Mar 2019 10:29

Instrument : MSVOA\_N  
 ClientSampled : 30240-41-42-43-44

Tgt Ion: 98 Resp: 2921848

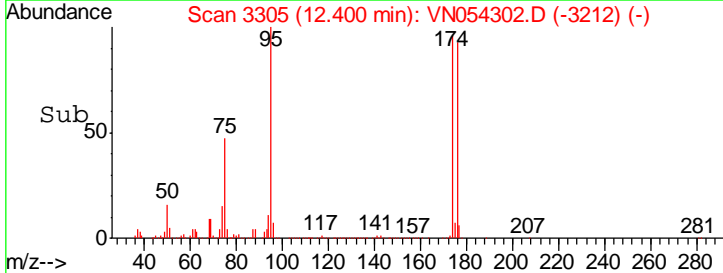
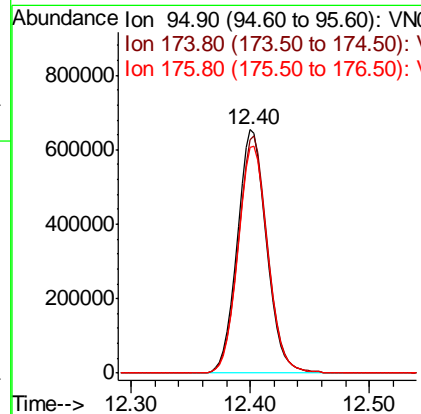
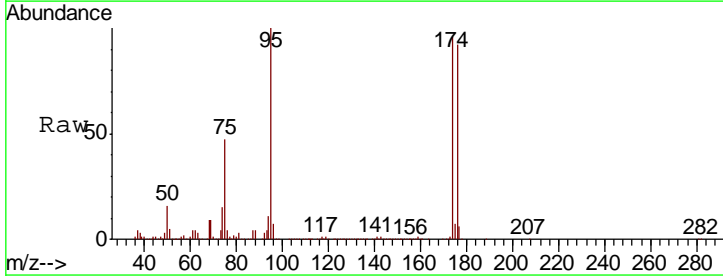
Ion	Ratio	Lower	Upper
98	100		
100	64.6	51.2	76.8

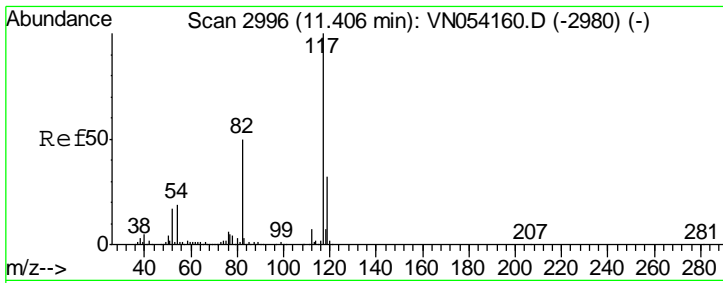


#62  
 4-Bromofluorobenzene  
 Concen: 56.244 ug/l  
 RT: 12.40 min Scan# 3305  
 Delta R.T. -0.00 min  
 Lab File: VN054302.D  
 Acq: 15 Mar 2019 10:29

Tgt Ion: 95 Resp: 1108465

Ion	Ratio	Lower	Upper
95	100		
174	97.4	0.0	191.0
176	95.0	0.0	187.4

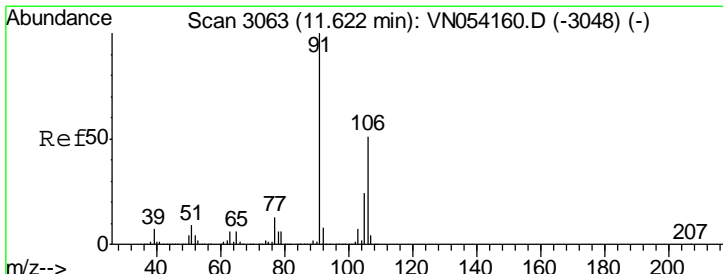
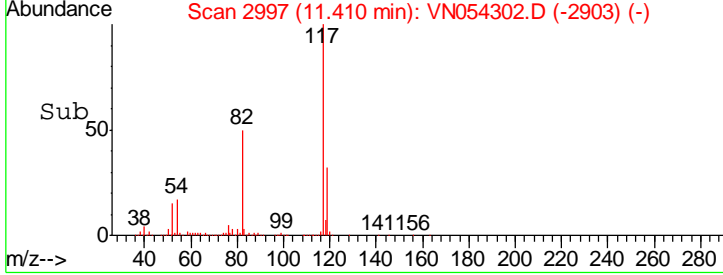
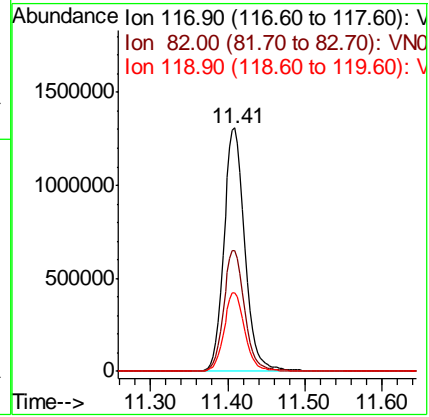
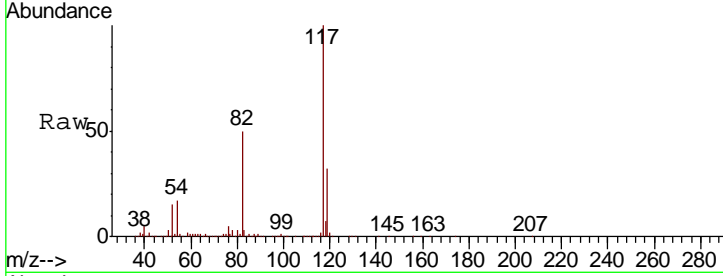




#63  
 Chlorobenzene-d5  
 Concen: 50.000 ug/l  
 RT: 11.41 min Scan# 2997  
 Delta R.T. 0.00 min  
 Lab File: VN054302.D  
 Acq: 15 Mar 2019 10:29

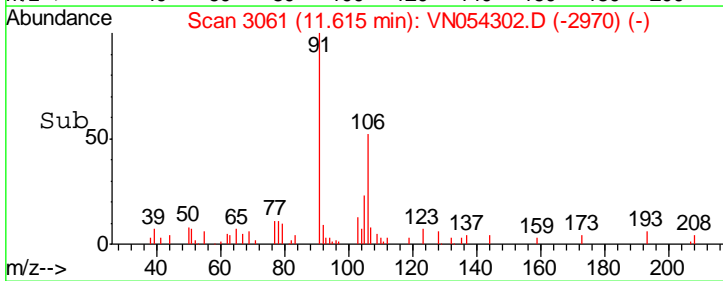
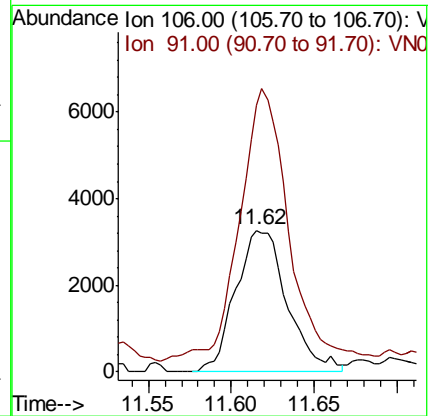
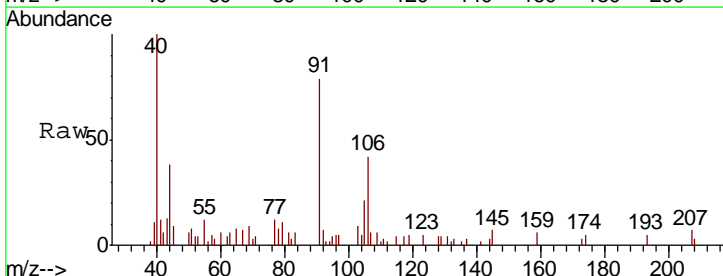
Instrument : MSVOA\_N  
 ClientSampled : 30240-41-42-43-44

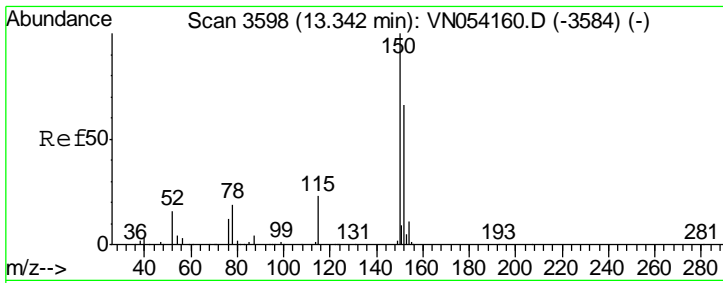
Tgt Ion	Resp	Lower	Upper
117	2479502		
82	49.6	40.0	60.0
119	32.4	25.8	38.6



#68  
 m/p-Xylenes  
 Concen: 0.201 ug/l  
 RT: 11.62 min Scan# 3061  
 Delta R.T. -0.01 min  
 Lab File: VN054302.D  
 Acq: 15 Mar 2019 10:29

Tgt Ion	Resp	Lower	Upper
106	7079		
91	182.9	159.4	239.2

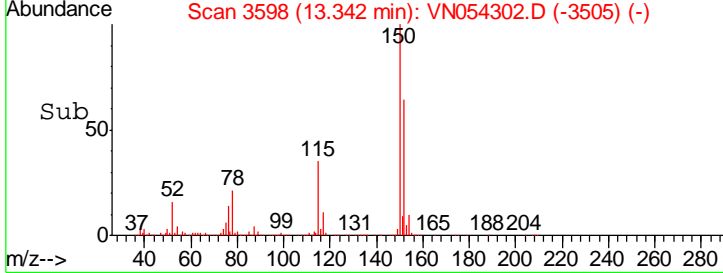
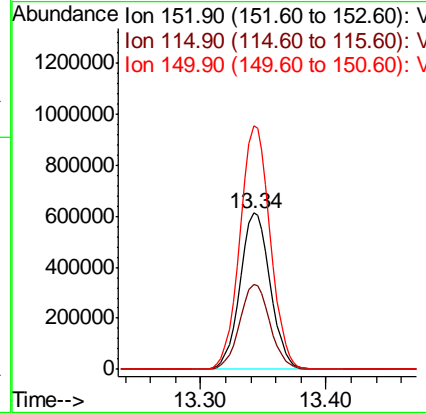
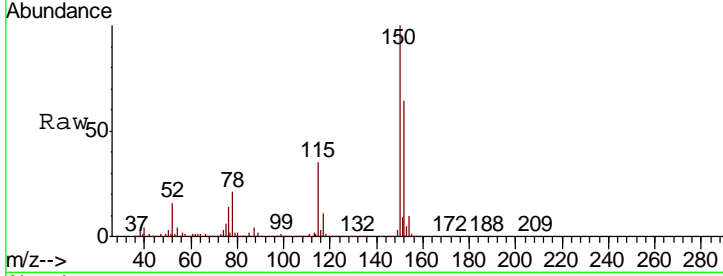




#72  
 1,4-Dichlorobenzene-d4  
 Concen: 50.000 ug/l  
 RT: 13.34 min Scan# 3598  
 Delta R.T. -0.00 min  
 Lab File: VN054302.D  
 Acq: 15 Mar 2019 10:29

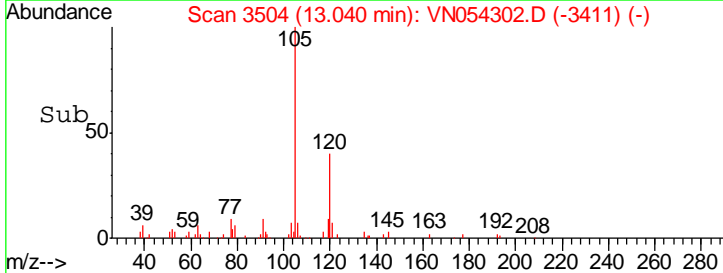
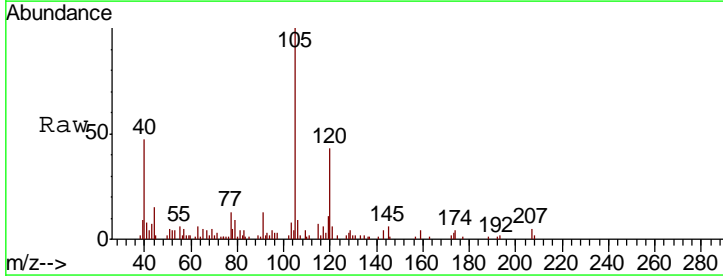
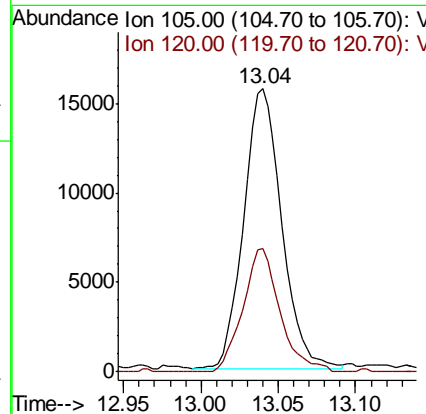
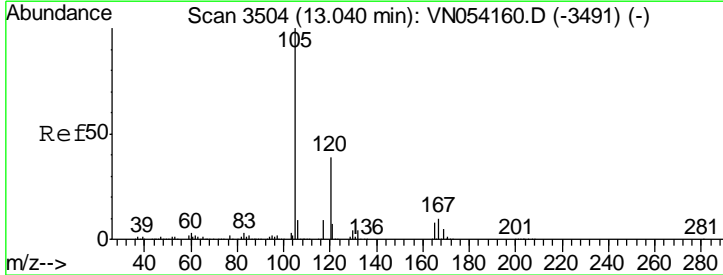
Instrument :  
 MSVOA\_N  
 ClientSampled :  
 30240-41-42-43-44

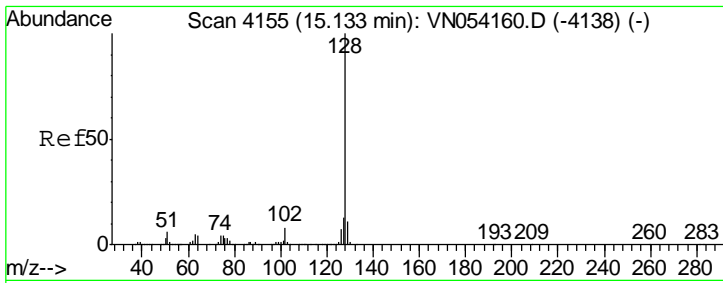
Tgt Ion	Resp	Lower	Upper
152	1023513		
152	100		
115	54.6	27.2	81.6
150	156.4	0.0	349.2



#84  
 1,2,4-Trimethylbenzene  
 Concen: 0.398 ug/l  
 RT: 13.04 min Scan# 3504  
 Delta R.T. -0.00 min  
 Lab File: VN054302.D  
 Acq: 15 Mar 2019 10:29

Tgt Ion	Resp	Lower	Upper
105	26592		
105	100		
120	43.0	23.4	70.3





#95  
 Naphthalene  
 Concen: 3.721 ug/l  
 RT: 15.13 min Scan# 4155  
 Delta R.T. -0.00 min  
 Lab File: VN054302.D  
 Acq: 15 Mar 2019 10:29

Instrument : MSVOA\_N  
 ClientSampled : 30240-41-42-43-44

Tgt Ion	Resp	Lower	Upper
128	12140		
127	17.1	10.1	15.1#
129	5.6	8.7	13.1#

