

Data Path : Z:\voasrv\HPCHEM1\MSVOA\_N\Data\VN031424\  
 Data File : VN081414.D  
 Acq On : 14 Mar 2024 16:53  
 Operator : JC\MD  
 Sample : P1747-04  
 Misc : 5.0mL/MSVOA\_N/WATER  
 ALS Vial : 15 Sample Multiplier: 1

Instrument :  
 MSVOA\_N  
 ClientSampleId :  
 MW-02

Quant Time: Mar 15 01:15:07 2024  
 Quant Method : Z:\voasrv\HPCHEM1\MSVOA\_N\methods\82N030524W.M  
 Quant Title : SW846 8260  
 QLast Update : Wed Mar 06 03:12:57 2024  
 Response via : Initial Calibration

Compound	R.T.	QIon	Response	Conc	Units	Dev(Min)
Internal Standards						
1) Pentafluorobenzene	8.230	168	287608	50.000	ug/l	0.00
34) 1,4-Difluorobenzene	9.106	114	536366	50.000	ug/l	0.00
63) Chlorobenzene-d5	11.871	117	459785	50.000	ug/l	0.00
72) 1,4-Dichlorobenzene-d4	13.794	152	179683	50.000	ug/l	0.00
System Monitoring Compounds						
33) 1,2-Dichloroethane-d4	8.583	65	222899	53.601	ug/l	0.00
Spiked Amount	50.000	Range	74 - 125	Recovery	=	107.200%
35) Dibromofluoromethane	8.171	113	171653	52.236	ug/l	0.00
Spiked Amount	50.000	Range	75 - 124	Recovery	=	104.480%
50) Toluene-d8	10.571	98	635600	51.741	ug/l	0.00
Spiked Amount	50.000	Range	86 - 113	Recovery	=	103.480%
62) 4-Bromofluorobenzene	12.853	95	200992	46.293	ug/l	0.00
Spiked Amount	50.000	Range	64 - 133	Recovery	=	92.580%

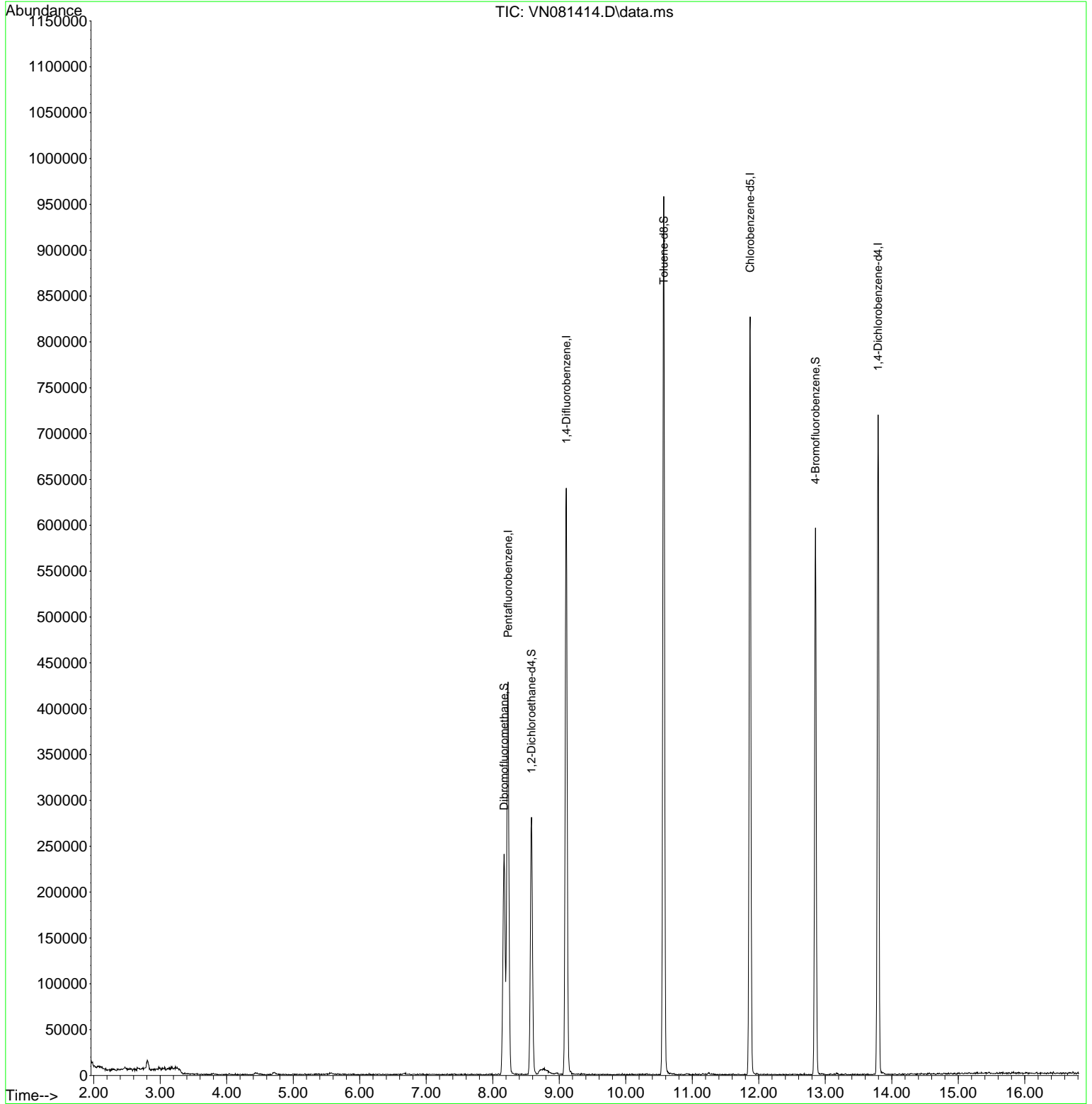
Target Compounds Qvalue

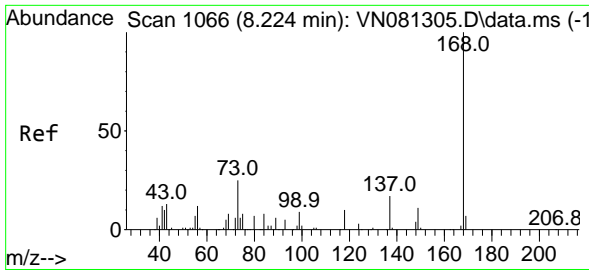
(#) = qualifier out of range (m) = manual integration (+) = signals summed

Data Path : Z:\voasrv\HPCHEM1\MSVOA\_N\Data\VN031424\  
 Data File : VN081414.D  
 Acq On : 14 Mar 2024 16:53  
 Operator : JC\MD  
 Sample : P1747-04  
 Misc : 5.0mL/MSVOA\_N/WATER  
 ALS Vial : 15 Sample Multiplier: 1

**Instrument :**  
 MSVOA\_N  
**ClientSampleId :**  
 MW-02

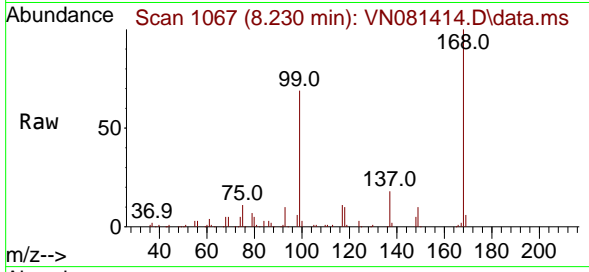
Quant Time: Mar 15 01:15:07 2024  
 Quant Method : Z:\voasrv\HPCHEM1\MSVOA\_N\methods\82N030524W.M  
 Quant Title : SW846 8260  
 QLast Update : Wed Mar 06 03:12:57 2024  
 Response via : Initial Calibration



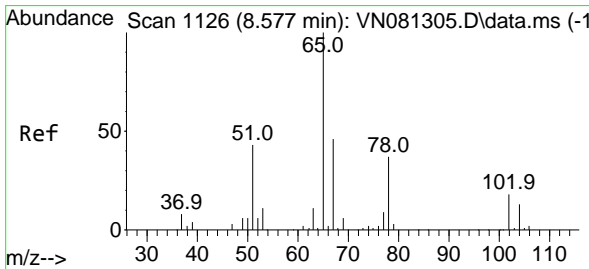
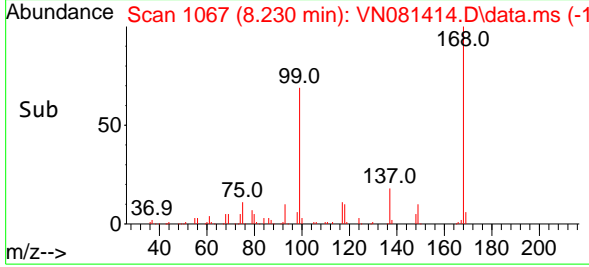
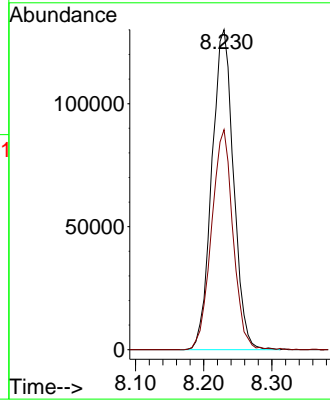


#1  
 Pentafluorobenzene  
 Concen: 50.000 ug/l  
 RT: 8.230 min Scan# 1066  
 Delta R.T. 0.006 min  
 Lab File: VN081414.D  
 Acq: 14 Mar 2024 16:53

Instrument :  
 MSVOA\_N  
 ClientSampleId :  
 MW-02

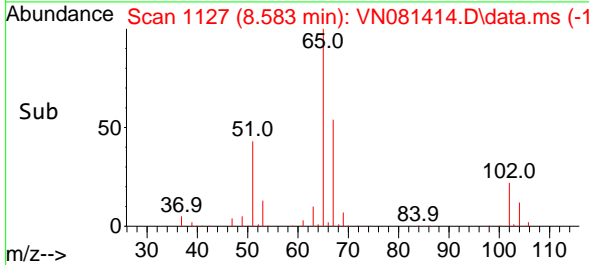
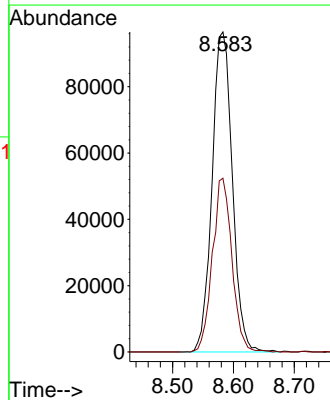
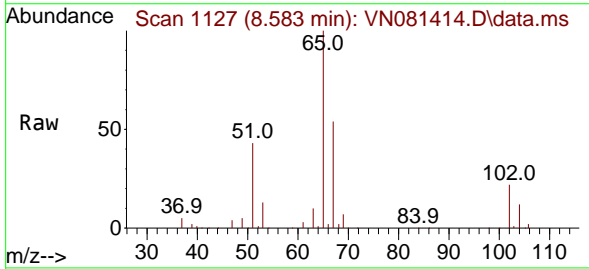


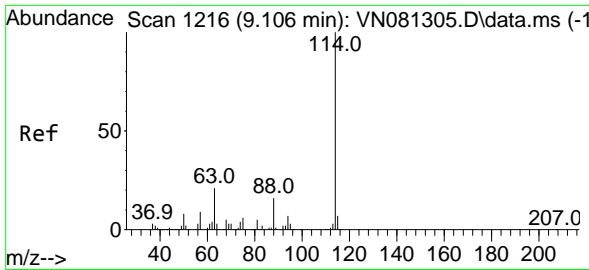
Tgt Ion:168 Resp: 287608  
 Ion Ratio Lower Upper  
 168 100  
 99 68.8 59.9 89.9



#33  
 1,2-Dichloroethane-d4  
 Concen: 53.601 ug/l  
 RT: 8.583 min Scan# 1127  
 Delta R.T. 0.006 min  
 Lab File: VN081414.D  
 Acq: 14 Mar 2024 16:53

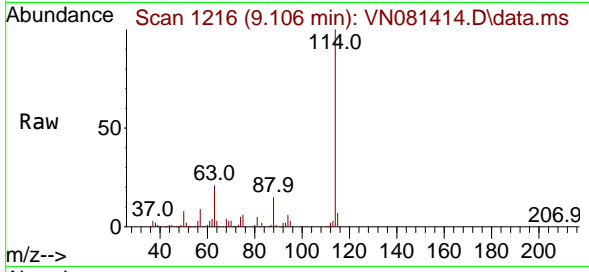
Tgt Ion: 65 Resp: 222899  
 Ion Ratio Lower Upper  
 65 100  
 67 52.3 0.0 102.4



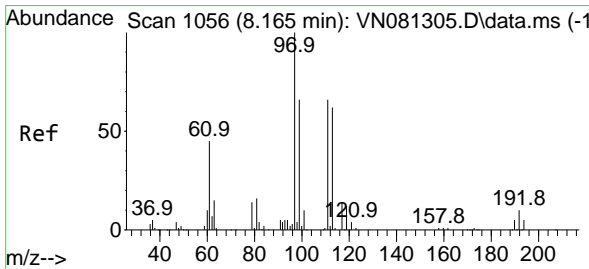
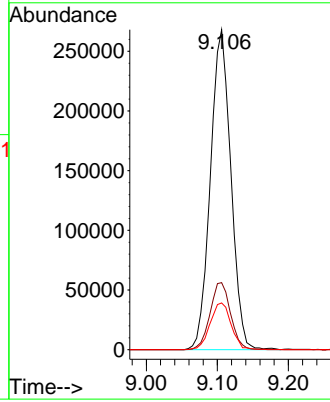
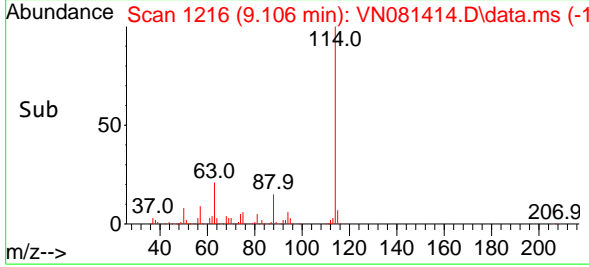


#34  
 1,4-Difluorobenzene  
 Concen: 50.000 ug/l  
 RT: 9.106 min Scan# 11  
 Delta R.T. 0.000 min  
 Lab File: VN081414.D  
 Acq: 14 Mar 2024 16:53

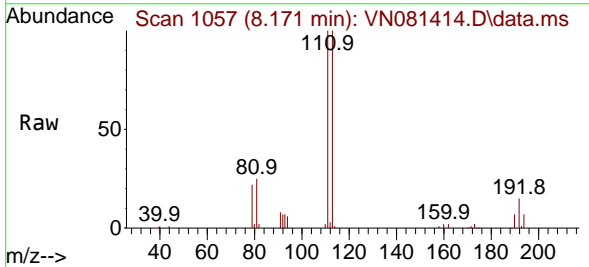
Instrument :  
 MSVOA\_N  
 ClientSampleId :  
 MW-02



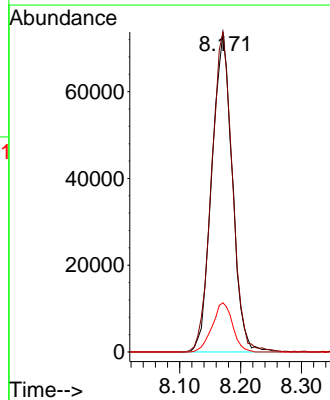
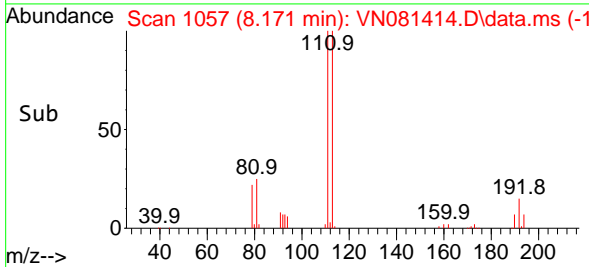
Tgt Ion:114 Resp: 536366  
 Ion Ratio Lower Upper  
 114 100  
 63 20.9 0.0 48.0  
 88 14.6 0.0 34.8

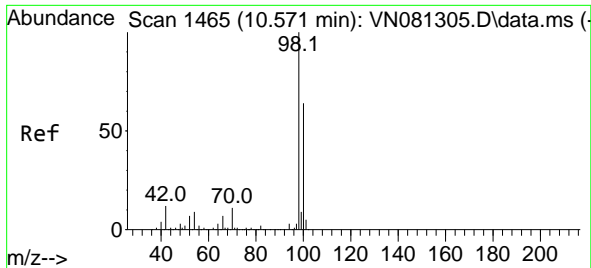


#35  
 Dibromofluoromethane  
 Concen: 52.236 ug/l  
 RT: 8.171 min Scan# 1057  
 Delta R.T. 0.006 min  
 Lab File: VN081414.D  
 Acq: 14 Mar 2024 16:53



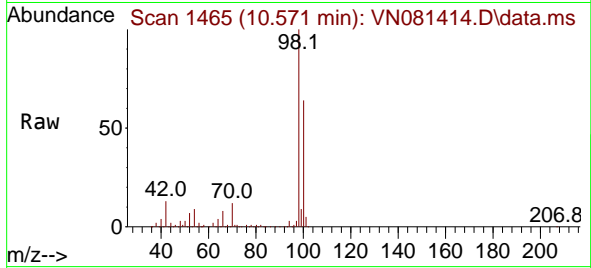
Tgt Ion:113 Resp: 171653  
 Ion Ratio Lower Upper  
 113 100  
 111 101.9 82.2 123.4  
 192 15.3 12.5 18.7



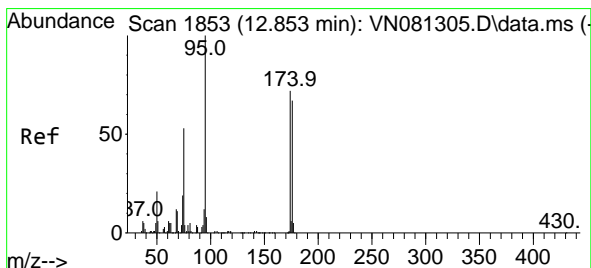
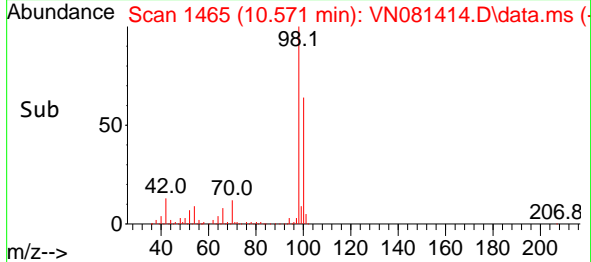
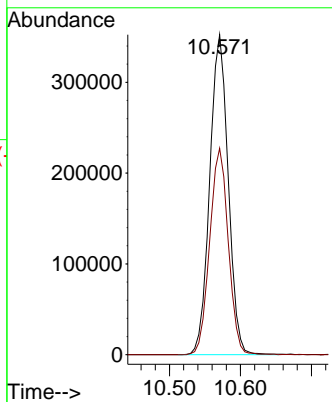


#50  
 Toluene-d8  
 Concen: 51.741 ug/l  
 RT: 10.571 min Scan# 1465  
 Delta R.T. 0.000 min  
 Lab File: VN081414.D  
 Acq: 14 Mar 2024 16:53

Instrument : MSVOA\_N  
 ClientSampleId : MW-02

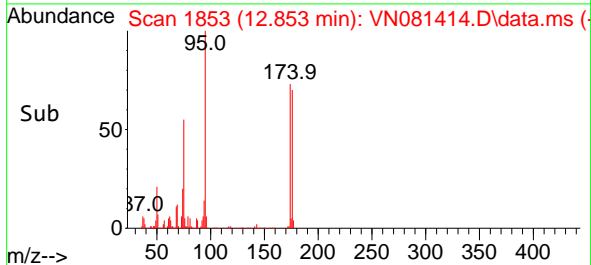
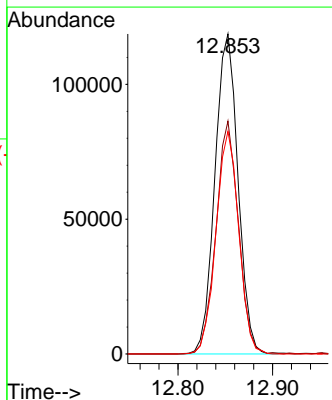
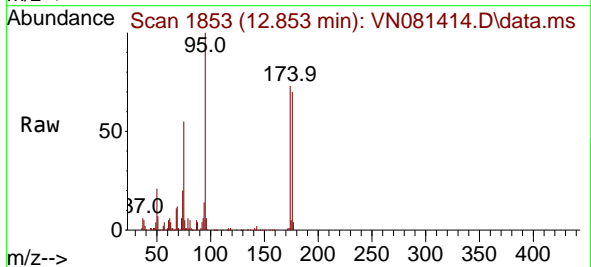


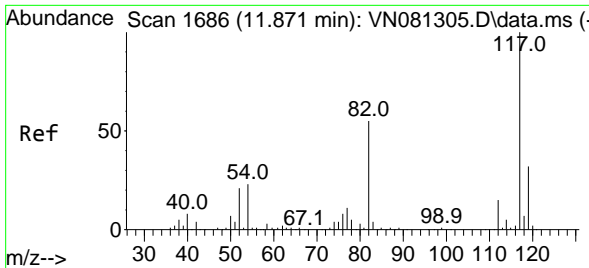
Tgt Ion: 98 Resp: 635600  
 Ion Ratio Lower Upper  
 98 100  
 100 64.8 51.4 77.0



#62  
 4-Bromofluorobenzene  
 Concen: 46.293 ug/l  
 RT: 12.853 min Scan# 1853  
 Delta R.T. 0.000 min  
 Lab File: VN081414.D  
 Acq: 14 Mar 2024 16:53

Tgt Ion: 95 Resp: 200992  
 Ion Ratio Lower Upper  
 95 100  
 174 70.8 0.0 120.4  
 176 68.7 0.0 121.0



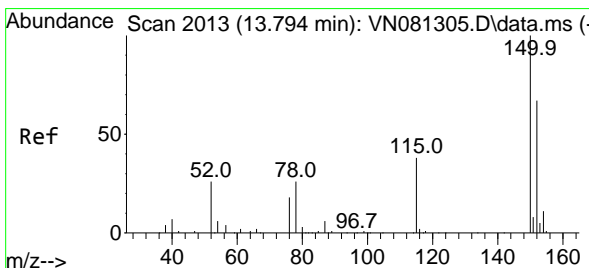
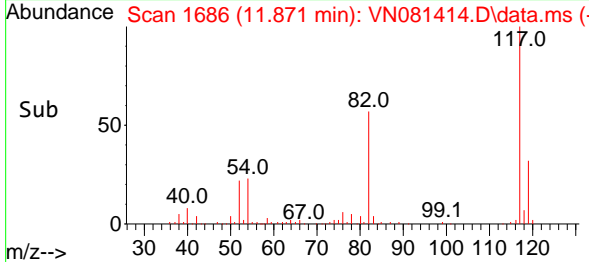
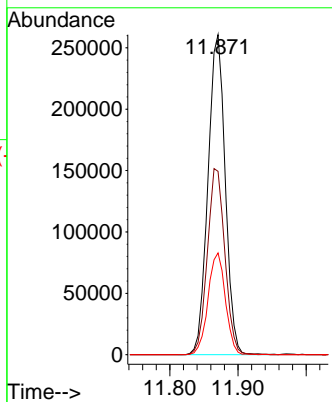
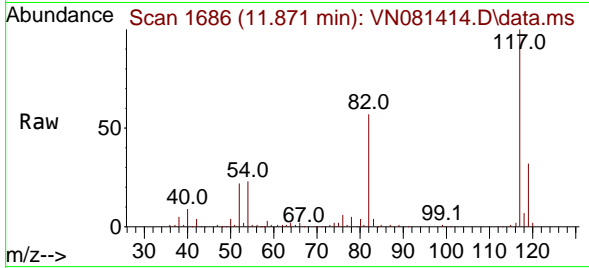


#63  
 Chlorobenzene-d5  
 Concen: 50.000 ug/l  
 RT: 11.871 min Scan# 117  
 Delta R.T. 0.000 min  
 Lab File: VN081414.D  
 Acq: 14 Mar 2024 16:53

Instrument :  
 MSVOA\_N  
 ClientSampleId :  
 MW-02

Tgt Ion:117 Resp: 459785

Ion	Ratio	Lower	Upper
117	100		
82	57.3	52.7	79.1
119	31.8	25.3	37.9



#72  
 1,4-Dichlorobenzene-d4  
 Concen: 50.000 ug/l  
 RT: 13.794 min Scan# 2013  
 Delta R.T. 0.000 min  
 Lab File: VN081414.D  
 Acq: 14 Mar 2024 16:53

Tgt Ion:152 Resp: 179683

Ion	Ratio	Lower	Upper
152	100		
115	66.0	32.3	96.8
150	162.9	0.0	339.8

