

Data Path : Z:\voasrv\HPCHEM1\MSVOA_N\Data\VN031522\
 Data File : VN071301.D
 Acq On : 15 Mar 2022 18:52
 Operator : JC\MD
 Sample : PB143286ZHE#02
 Misc : 5.0mL/MSVOA_N/WATER
 ALS Vial : 19 Sample Multiplier: 1

Instrument :
 MSVOA_N
 ClientSampleId :
 PB143286ZHE#02

Quant Time: Mar 16 08:06:15 2022
 Quant Method : Z:\voasrv\HPCHEM1\MSVOA_N\methods\82N030722W.M
 Quant Title : SW846 8260
 QLast Update : Tue Mar 08 06:52:46 2022
 Response via : Initial Calibration

Compound	R.T.	QIon	Response	Conc	Units	Dev(Min)

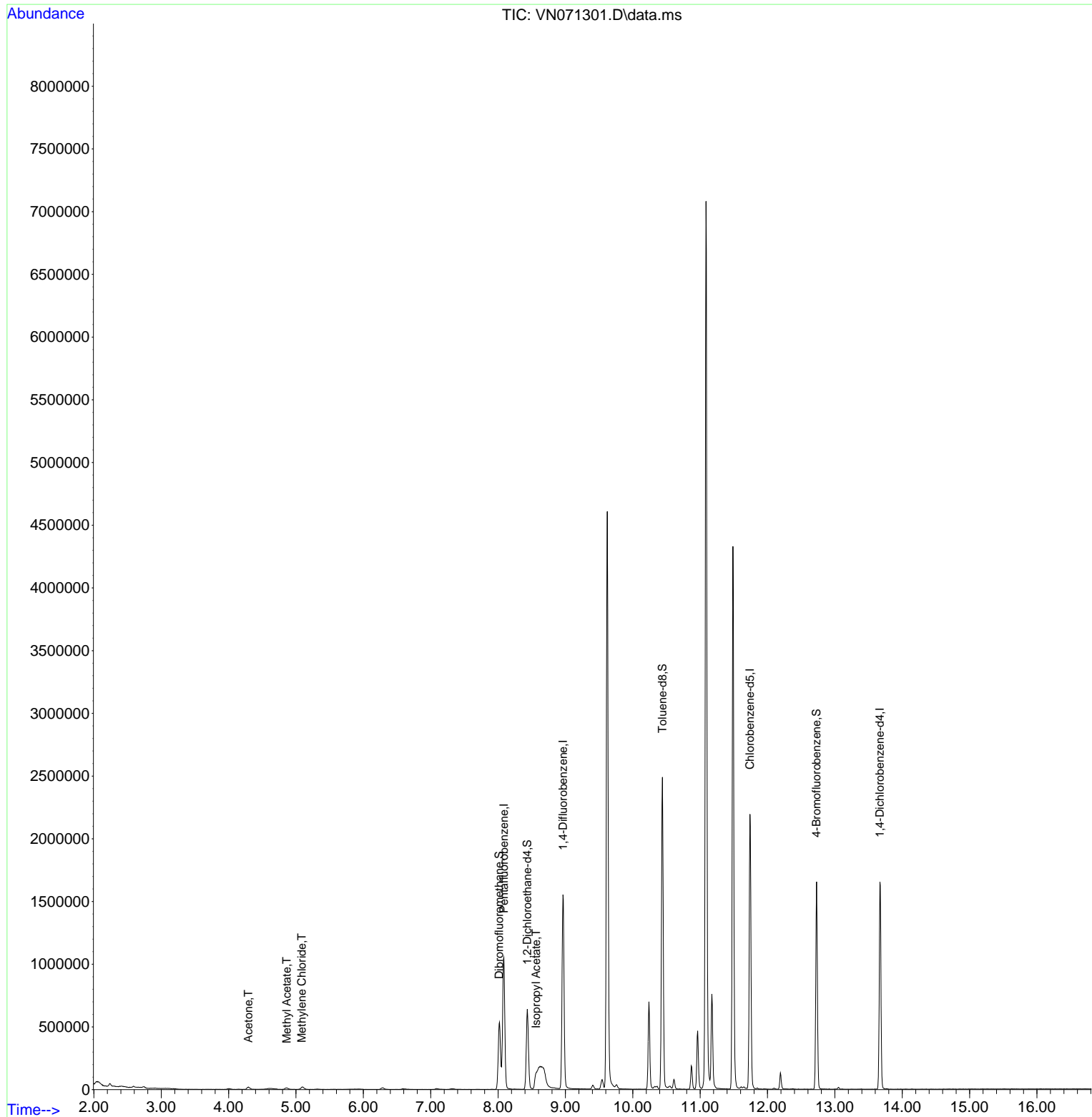
Internal Standards						
1) Pentafluorobenzene	8.086	168	813979	50.000	ug/l	0.00
34) 1,4-Difluorobenzene	8.963	114	1359017	50.000	ug/l	0.00
63) Chlorobenzene-d5	11.739	117	1280009	50.000	ug/l	0.00
72) 1,4-Dichlorobenzene-d4	13.668	152	461610	50.000	ug/l	0.00
System Monitoring Compounds						
33) 1,2-Dichloroethane-d4	8.433	65	517716	46.407	ug/l	0.00
Spiked Amount	50.000	Range	61 - 141	Recovery	=	92.820%
35) Dibromofluoromethane	8.016	113	394318	45.980	ug/l	0.00
Spiked Amount	50.000	Range	69 - 133	Recovery	=	91.960%
50) Toluene-d8	10.439	98	1692470	49.016	ug/l	0.00
Spiked Amount	50.000	Range	65 - 126	Recovery	=	98.040%
62) 4-Bromofluorobenzene	12.727	95	556567	47.601	ug/l	0.00
Spiked Amount	50.000	Range	58 - 135	Recovery	=	95.200%
Target Compounds						
						Qvalue
16) Acetone	4.293	43	32807	6.044	ug/l	93
18) Methyl Acetate	4.863	43	27874	2.364	ug/l #	51
20) Methylene Chloride	5.087	84	15053	1.888	ug/l #	93
43) Isopropyl Acetate	8.563	43	156687	5.541	ug/l #	76

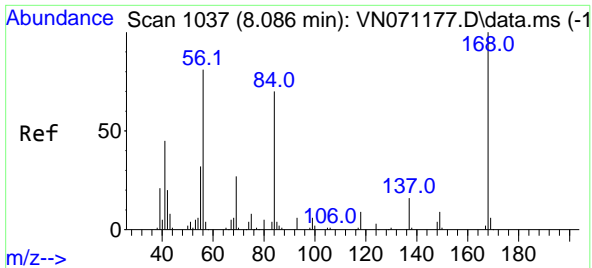
(#) = qualifier out of range (m) = manual integration (+) = signals summed

Data Path : Z:\voasrv\HPCHEM1\MSVOA_N\Data\VN031522\
 Data File : VN071301.D
 Acq On : 15 Mar 2022 18:52
 Operator : JC\MD
 Sample : PB143286ZHE#02
 Misc : 5.0mL/MSVOA_N/WATER
 ALS Vial : 19 Sample Multiplier: 1

Instrument :
 MSVOA_N
 ClientSampleId :
 PB143286ZHE#02

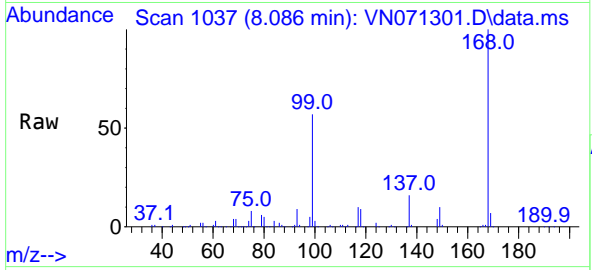
Quant Time: Mar 16 08:06:15 2022
 Quant Method : Z:\voasrv\HPCHEM1\MSVOA_N\methods\82N030722W.M
 Quant Title : SW846 8260
 QLast Update : Tue Mar 08 06:52:46 2022
 Response via : Initial Calibration



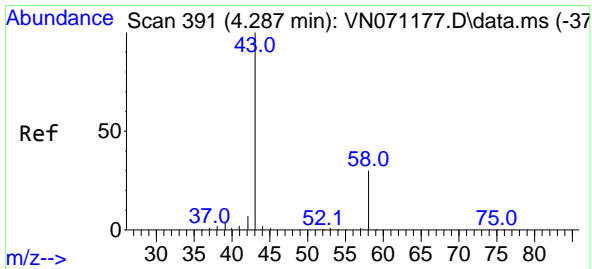
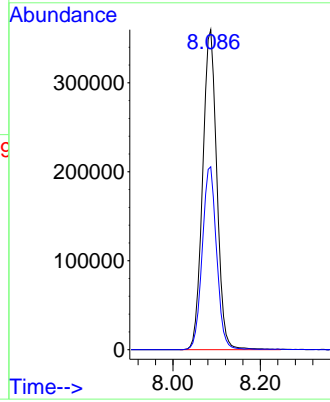
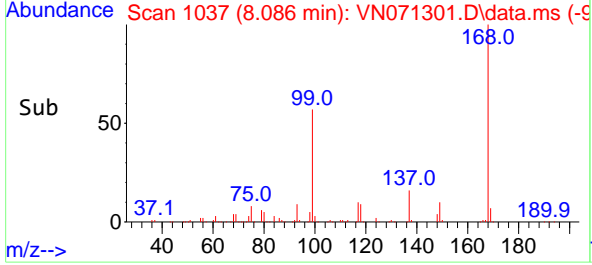


#1
 Pentafluorobenzene
 Concen: 50.000 ug/l
 RT: 8.086 min Scan# 10
 Delta R.T. 0.000 min
 Lab File: VN071301.D
 Acq: 15 Mar 2022 18:52

Instrument : MSVOA_N
 ClientSampleId : PB143286ZHE#02

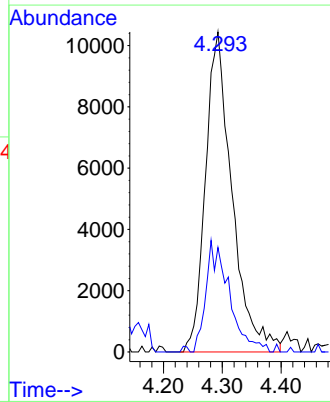
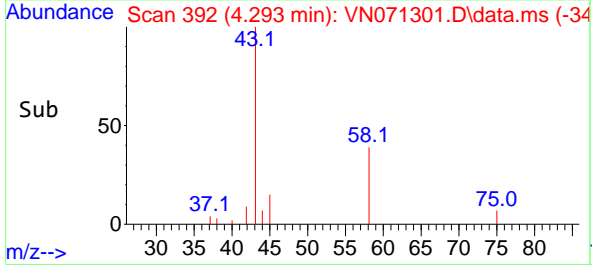
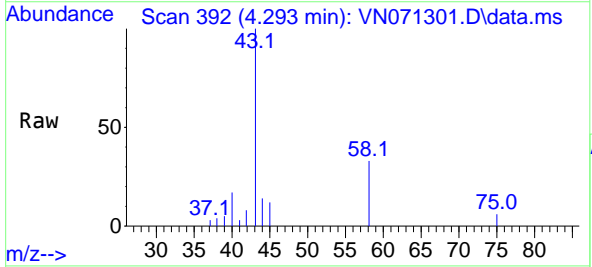


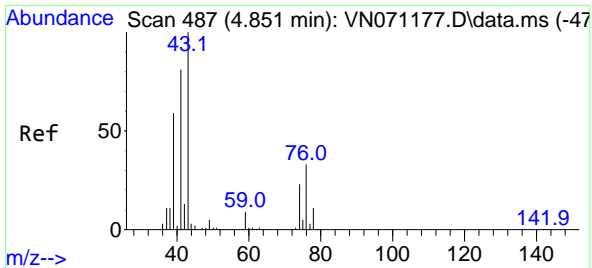
Tgt Ion:168 Resp: 813979
 Ion Ratio Lower Upper
 168 100
 99 57.2 41.3 61.9



#16
 Acetone
 Concen: 6.044 ug/l
 RT: 4.293 min Scan# 392
 Delta R.T. 0.006 min
 Lab File: VN071301.D
 Acq: 15 Mar 2022 18:52

Tgt Ion: 43 Resp: 32807
 Ion Ratio Lower Upper
 43 100
 58 32.7 23.1 34.7

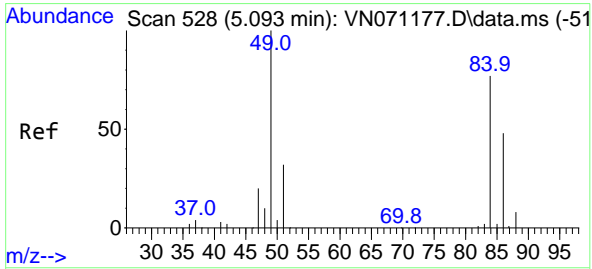
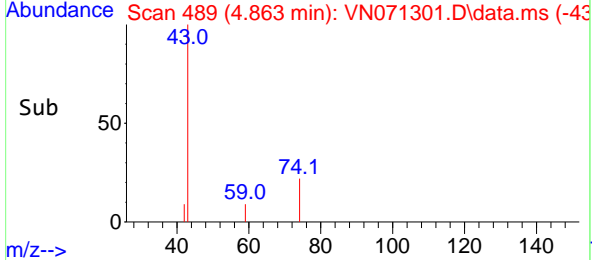
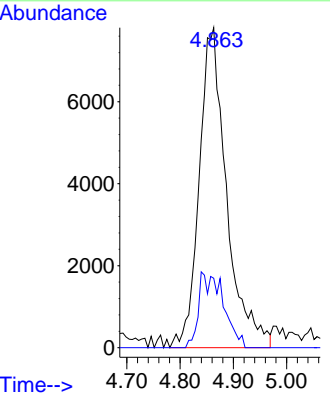
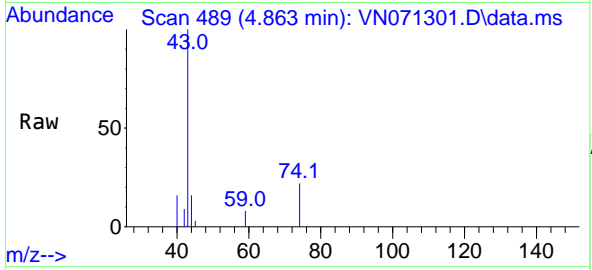




#18
 Methyl Acetate
 Concen: 2.364 ug/l
 RT: 4.863 min Scan# 489
 Delta R.T. 0.012 min
 Lab File: VN071301.D
 Acq: 15 Mar 2022 18:52

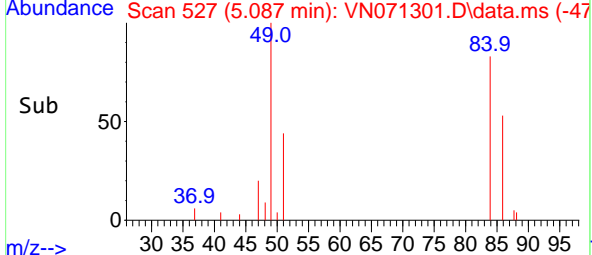
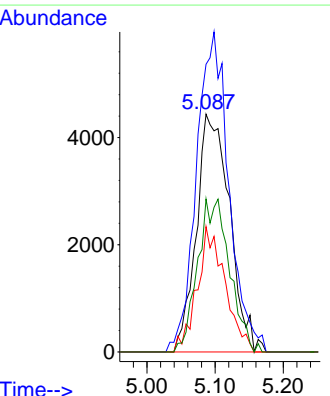
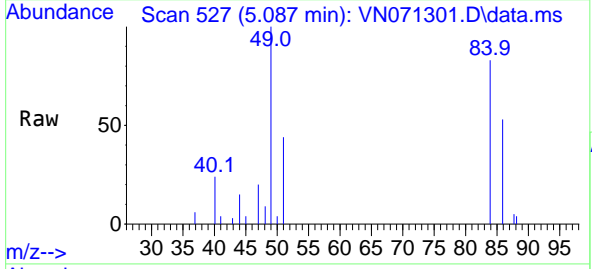
Instrument : MSVOA_N
 ClientSampleId : PB143286ZHE#02

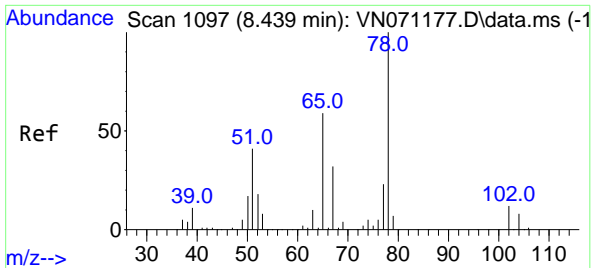
Tgt Ion: 43 Resp: 27874
 Ion Ratio Lower Upper
 43 100
 74 0.0 19.4 29.2#



#20
 Methylene Chloride
 Concen: 1.888 ug/l
 RT: 5.087 min Scan# 527
 Delta R.T. -0.006 min
 Lab File: VN071301.D
 Acq: 15 Mar 2022 18:52

Tgt Ion: 84 Resp: 15053
 Ion Ratio Lower Upper
 84 100
 49 121.0 93.5 140.3
 51 52.7 29.4 44.2#
 86 64.3 53.0 79.4

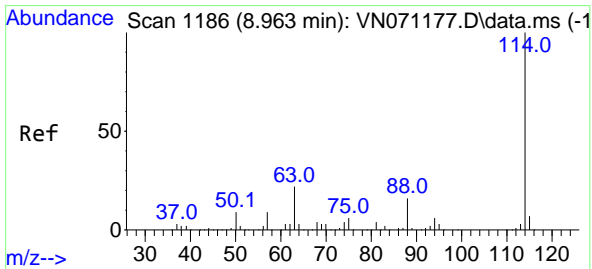
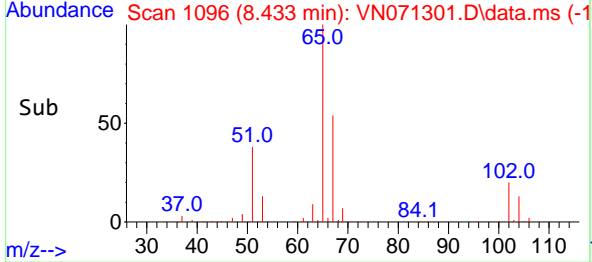
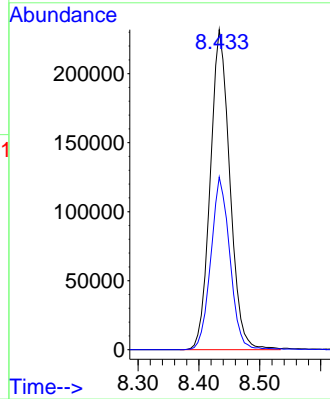
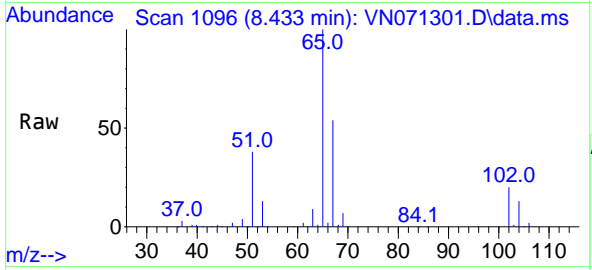




#33
 1,2-Dichloroethane-d4
 Concen: 46.407 ug/l
 RT: 8.433 min Scan# 1096
 Delta R.T. -0.006 min
 Lab File: VN071301.D
 Acq: 15 Mar 2022 18:52

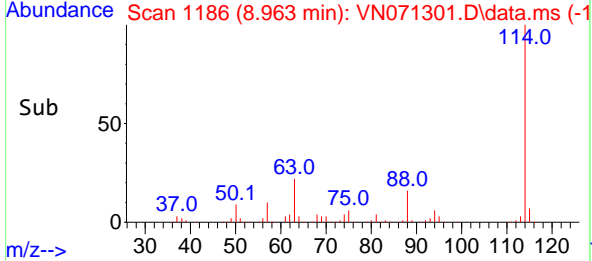
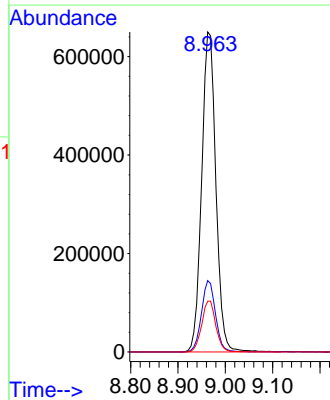
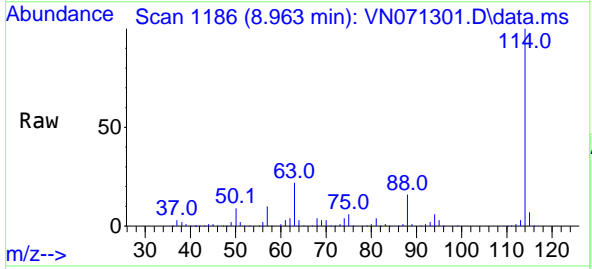
Instrument : MSVOA_N
 ClientSampleId : PB143286ZHE#02

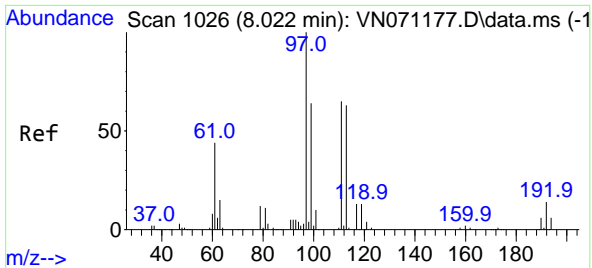
Tgt Ion: 65 Resp: 517716
 Ion Ratio Lower Upper
 65 100
 67 52.6 0.0 103.0



#34
 1,4-Difluorobenzene
 Concen: 50.000 ug/l
 RT: 8.963 min Scan# 1186
 Delta R.T. -0.000 min
 Lab File: VN071301.D
 Acq: 15 Mar 2022 18:52

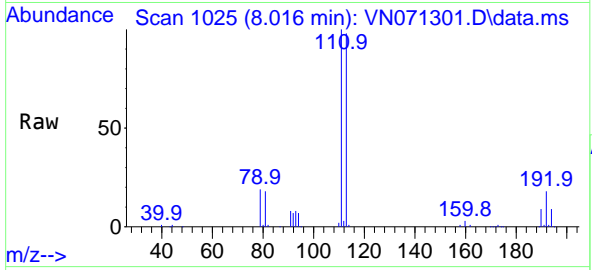
Tgt Ion: 114 Resp: 1359017
 Ion Ratio Lower Upper
 114 100
 63 22.3 0.0 37.8
 88 15.9 0.0 27.4



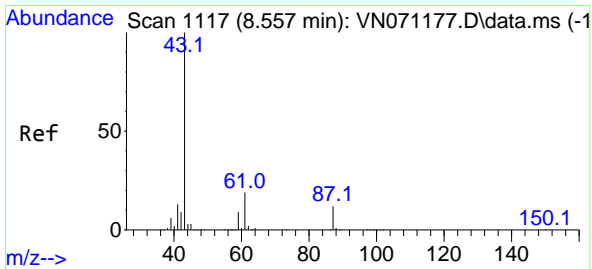
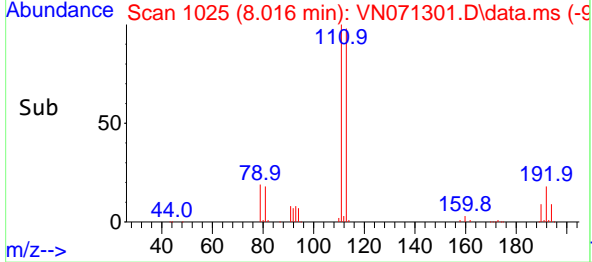
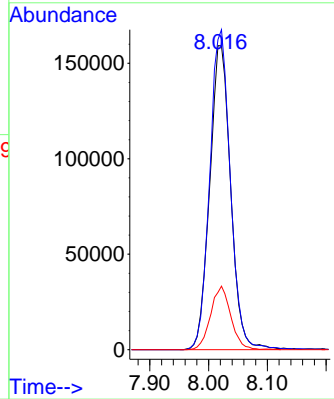


#35
 Dibromofluoromethane
 Concen: 45.980 ug/l
 RT: 8.016 min Scan# 1025
 Delta R.T. -0.006 min
 Lab File: VN071301.D
 Acq: 15 Mar 2022 18:52

Instrument : MSVOA_N
 ClientSampleId : PB143286ZHE#02

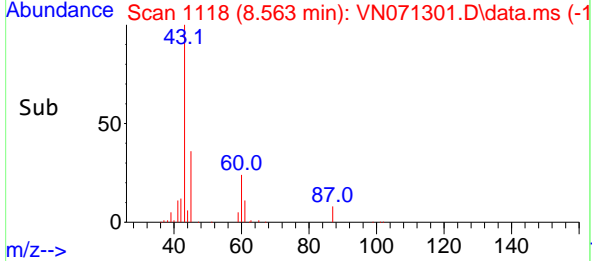
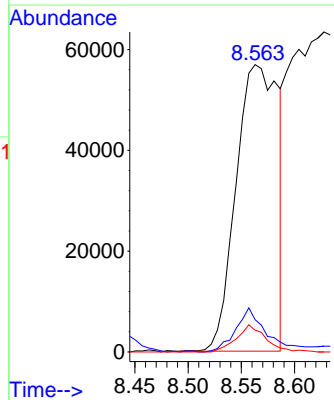
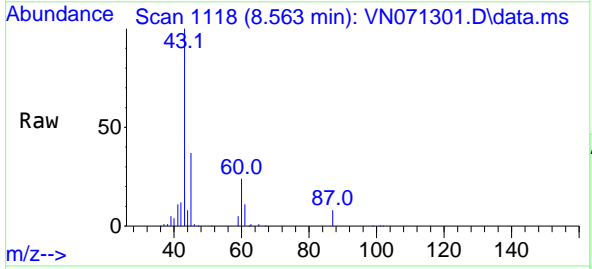


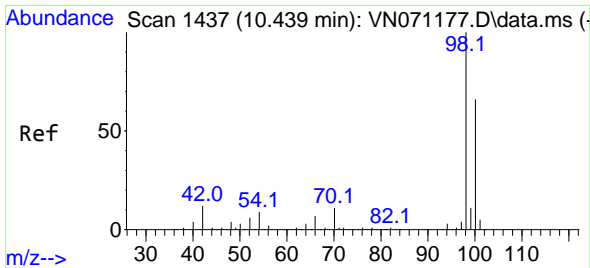
Tgt Ion:113 Resp: 394318
 Ion Ratio Lower Upper
 113 100
 111 103.6 82.2 123.2
 192 20.1 16.9 25.3



#43
 Isopropyl Acetate
 Concen: 5.541 ug/l
 RT: 8.563 min Scan# 1118
 Delta R.T. 0.006 min
 Lab File: VN071301.D
 Acq: 15 Mar 2022 18:52

Tgt Ion: 43 Resp: 156687
 Ion Ratio Lower Upper
 43 100
 61 11.4 20.4 30.6#
 87 6.6 11.2 16.8#

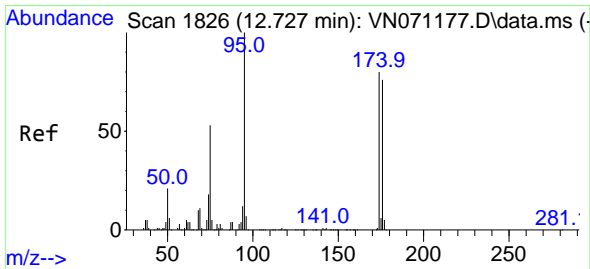
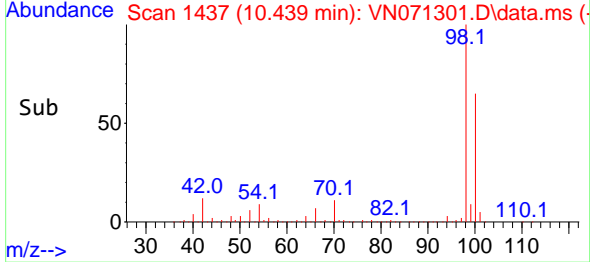
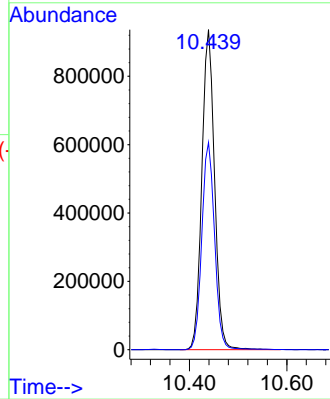
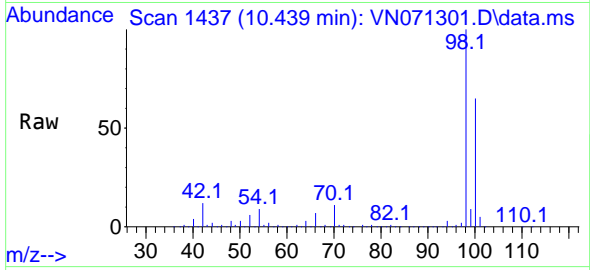




#50
 Toluene-d8
 Concen: 49.016 ug/l
 RT: 10.439 min Scan# 1437
 Delta R.T. 0.000 min
 Lab File: VN071301.D
 Acq: 15 Mar 2022 18:52

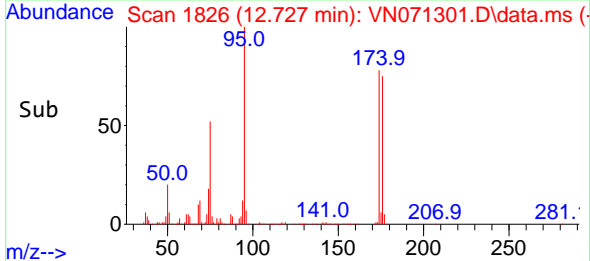
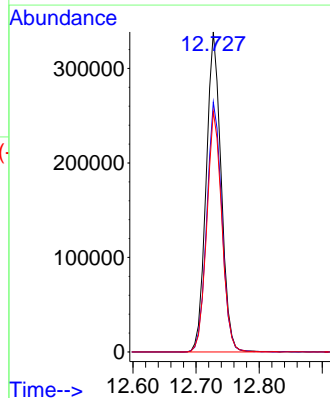
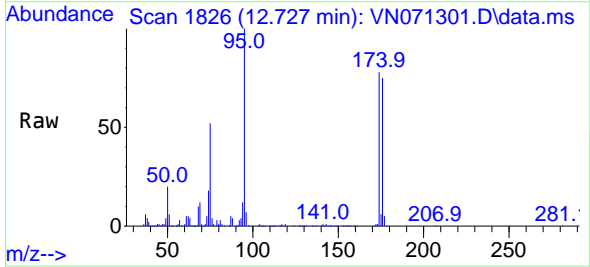
Instrument :
 MSVOA_N
 ClientSampleId :
 PB143286ZHE#02

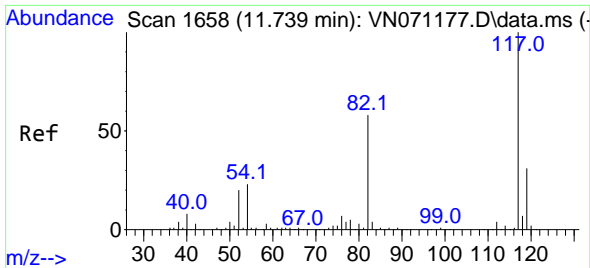
Tgt Ion: 98 Resp: 1692470
 Ion Ratio Lower Upper
 98 100
 100 65.4 50.4 75.6



#62
 4-Bromofluorobenzene
 Concen: 47.601 ug/l
 RT: 12.727 min Scan# 1826
 Delta R.T. 0.000 min
 Lab File: VN071301.D
 Acq: 15 Mar 2022 18:52

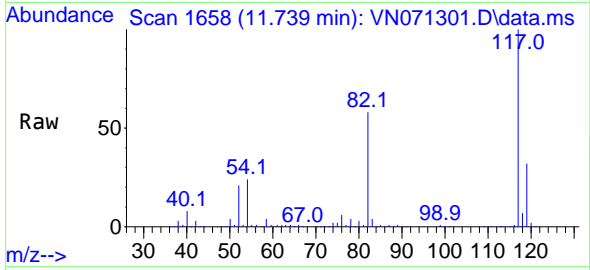
Tgt Ion: 95 Resp: 556567
 Ion Ratio Lower Upper
 95 100
 174 78.7 0.0 187.2
 176 75.4 0.0 181.4



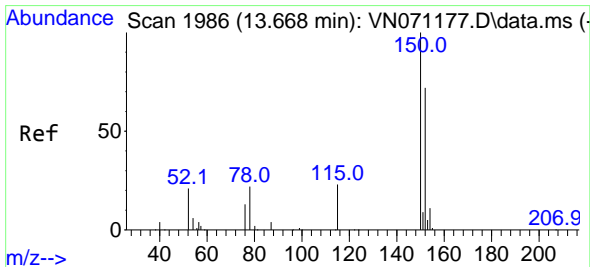
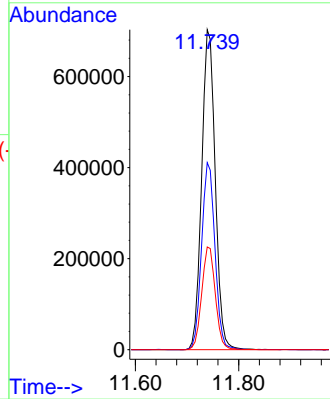
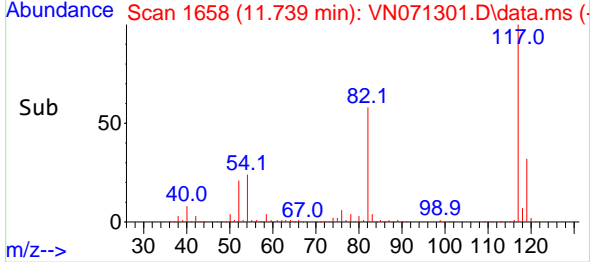


#63
 Chlorobenzene-d5
 Concen: 50.000 ug/l
 RT: 11.739 min Scan# 1177
 Delta R.T. 0.000 min
 Lab File: VN071301.D
 Acq: 15 Mar 2022 18:52

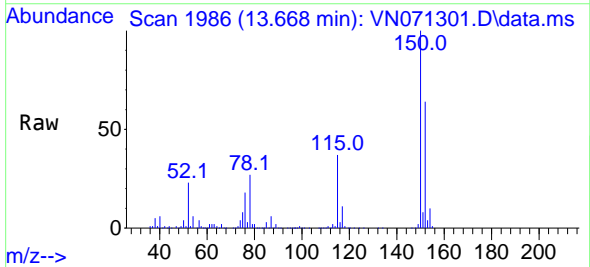
Instrument : MSVOA_N
 ClientSampleId : PB143286ZHE#02



Tgt Ion:117 Resp: 1280009
 Ion Ratio Lower Upper
 117 100
 82 58.4 42.4 63.6
 119 32.1 25.4 38.2



#72
 1,4-Dichlorobenzene-d4
 Concen: 50.000 ug/l
 RT: 13.668 min Scan# 1986
 Delta R.T. 0.000 min
 Lab File: VN071301.D
 Acq: 15 Mar 2022 18:52



Tgt Ion:152 Resp: 461610
 Ion Ratio Lower Upper
 152 100
 115 58.2 27.5 82.5
 150 155.9 0.0 344.4

