

Data Path : Z:\voasrv\HPCHEM1\MSVOA\_N\Data\VN031524\  
 Data File : VN081439.D  
 Acq On : 15 Mar 2024 20:53  
 Operator : JC\MD  
 Sample : P1772-11 50X  
 Misc : 5.0mL/MSVOA\_N/WATER  
 ALS Vial : 16 Sample Multiplier: 1

Instrument :  
 MSVOA\_N  
 ClientSampleId :  
 1349

Integration Parameters: RTEINT.P

Integrator: RTE  
 Smoothing : ON Filtering: 5  
 Sampling : 1 Min Area: 3 % of largest Peak  
 Start Thrs: 0.2 Max Peaks: 100  
 Stop Thrs : 0 Peak Location: TOP

If leading or trailing edge < 100 prefer < Baseline drop else tangent >  
 Peak separation: 5

Method : Z:\voasrv\HPCHEM1\MSVOA\_N\methods\82N030524W.M  
 Title : SW846 8260

Signal : TIC: VN081439.D\data.ms

peak #	R.T. min	first scan	max scan	last scan	PK TY	peak height	corr. area	corr. % max.	% of total
1	2.818	140	147	155	rVB3	11276	28389	1.51%	0.296%
2	8.171	1047	1057	1061	rBV	250594	608284	32.32%	6.340%
3	8.230	1061	1067	1082	rVB	459990	1040554	55.28%	10.845%
4	8.582	1117	1127	1141	rBV	296849	668696	35.52%	6.969%
5	9.106	1205	1216	1228	rBV	678911	1396987	74.22%	14.560%
6	10.571	1456	1465	1476	rBV	1031731	1882345	100.00%	19.618%
7	11.870	1675	1686	1694	rBV	881584	1572715	83.55%	16.391%
8	12.853	1846	1853	1864	rVB	631827	1071911	56.95%	11.172%
9	13.264	1917	1923	1930	rVB3	24178	39286	2.09%	0.409%
10	13.794	2005	2013	2022	rBV	777507	1285604	68.30%	13.399%

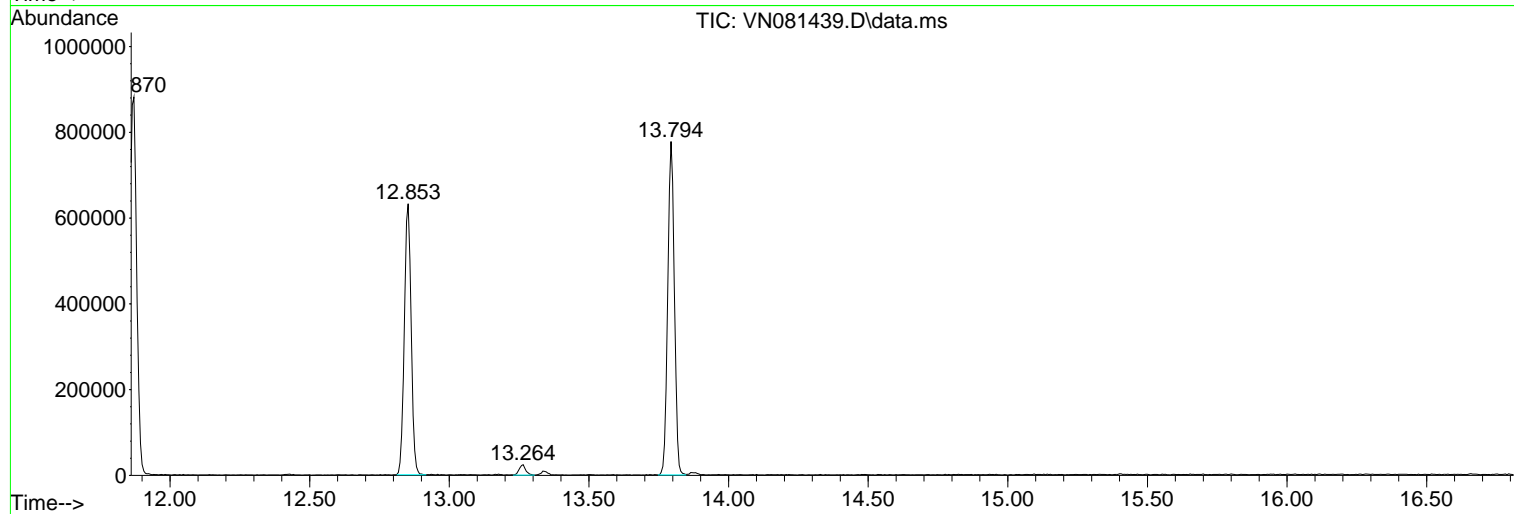
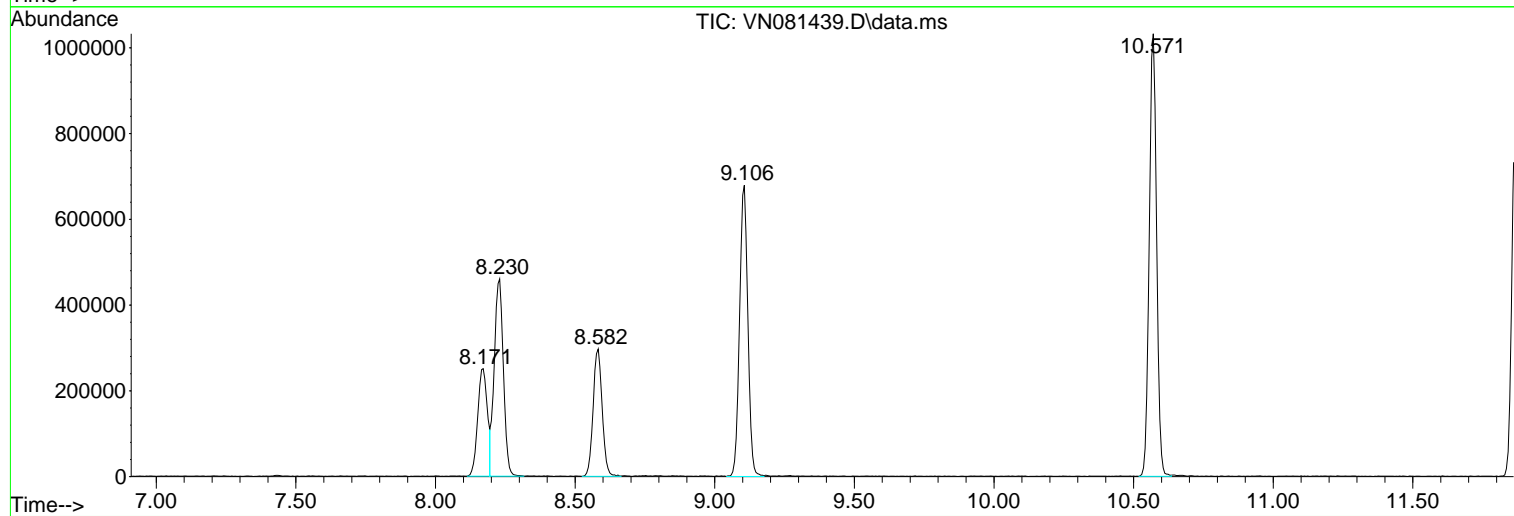
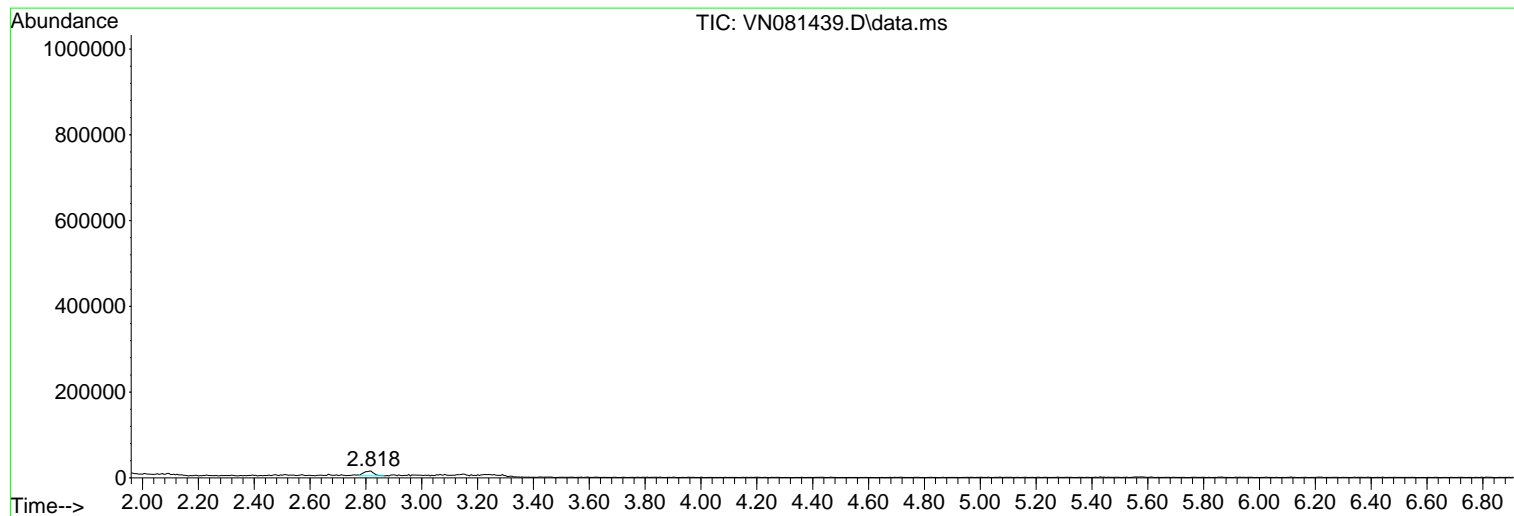
Sum of corrected areas: 9594771

Data Path : Z:\voasrv\HPCHEM1\MSVOA\_N\Data\VN031524\  
Data File : VN081439.D  
Acq On : 15 Mar 2024 20:53  
Operator : JC\MD  
Sample : P1772-11 50X  
Misc : 5.0mL/MSVOA\_N/WATER  
ALS Vial : 16 Sample Multiplier: 1

Instrument :  
MSVOA\_N  
ClientSampleId :  
1349

Quant Method : Z:\voasrv\HPCHEM1\MSVOA\_N\methods\82N030524W.M  
Quant Title : SW846 8260

TIC Library : C:\Database\NIST20.L  
TIC Integration Parameters: LSCINT.P



Library Search Compound Report

Data Path : Z:\voasrv\HPCHEM1\MSVOA\_N\Data\VN031524\  
Data File : VN081439.D  
Acq On : 15 Mar 2024 20:53  
Operator : JC\MD  
Sample : P1772-11 50X  
Misc : 5.0mL/MSVOA\_N/WATER  
ALS Vial : 16 Sample Multiplier: 1

Instrument :  
MSVOA\_N  
ClientSampleId :  
1349

Quant Method : Z:\voasrv\HPCHEM1\MSVOA\_N\methods\82N030524W.M  
Quant Title : SW846 8260

TIC Library : C:\Database\NIST20.L  
TIC Integration Parameters: LSCINT.P

No Library Search Compounds Detected

\*\*\*\*\*

Data Path : Z:\voasrv\HPCHEM1\MSVOA\_N\Data\VN031524\  
Data File : VN081439.D  
Acq On : 15 Mar 2024 20:53  
Operator : JC\MD  
Sample : P1772-11 50X  
Misc : 5.0mL/MSVOA\_N/WATER  
ALS Vial : 16 Sample Multiplier: 1

Instrument :  
MSVOA\_N  
ClientSampleId :  
1349

Quant Method : Z:\voasrv\HPCHEM1\MSVOA\_N\methods\82N030524W.M  
Quant Title : SW846 8260

TIC Library : C:\Database\NIST20.L  
TIC Integration Parameters: LSCINT.P

TIC Top Hit name	RT	EstConc	Units	Response	#	RT	Resp	Conc
------------------	----	---------	-------	----------	---	----	------	------

---