

Data Path : Z:\VOASRV\HPCHEM1\MSVOA N\DATA\VN031619\
 Data File : VN054364.D
 Acq On : 17 Mar 2019 4:38
 Operator : JC/SP
 Sample : K1956-08
 Misc : 5.00mL/MSVOA N/WATER
 ALS Vial : 37 Sample Multiplier: 1

Instrument :
 MSVOA_N
 ClientSampleId :
 TP-8

Quant Time: Mar 18 08:20:54 2019
 Quant Method : Z:\VOASRV\HPCHEM1\MSVOA_N\METHODS\82N031219W.M
 Quant Title : SW846 8260
 QLast Update : Wed Mar 13 03:33:31 2019
 Response via : Initial Calibration

Internal Standards	R.T.	QIon	Response	Conc	Units	Dev(Min)
1) Pentafluorobenzene	7.67	168	1848741	50.00	ug/l	0.00
34) 1,4-Difluorobenzene	8.59	114	2670687	50.00	ug/l	0.00
63) Chlorobenzene-d5	11.41	117	2267108	50.00	ug/l	0.00
72) 1,4-Dichlorobenzene-d4	13.34	152	849192	50.00	ug/l	0.00

System Monitoring Compounds

33) 1,2-Dichloroethane-d4	8.03	65	913474	46.53	ug/l	0.00
Spiked Amount				50.000		
			Recovery	=	93.06%	
35) Dibromofluoromethane	7.59	113	813277	47.22	ug/l	0.00
Spiked Amount				50.000		
			Recovery	=	94.44%	
50) Toluene-d8	10.09	98	3061052	48.12	ug/l	0.00
Spiked Amount				50.000		
			Recovery	=	96.24%	
62) 4-Bromofluorobenzene	12.40	95	935324	42.02	ug/l	0.00
Spiked Amount				50.000		
			Recovery	=	84.04%	

Target Compounds

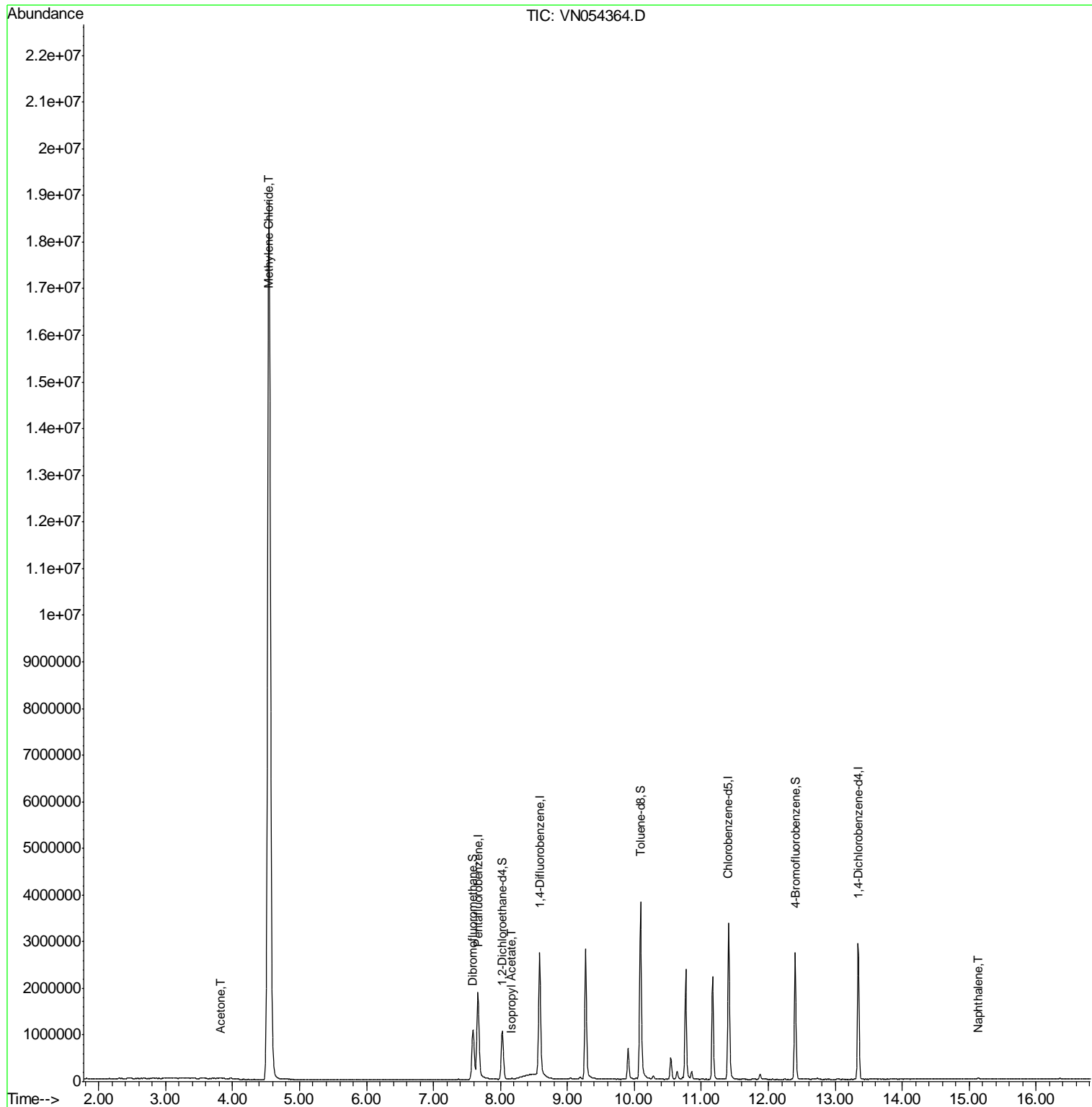
						Qvalue
16) Acetone	3.82	43	20017	3.561	ug/l	88
20) Methylene Chloride	4.55	84	15044881	815.057	ug/l	99
43) Isopropyl Acetate	8.17	43	27646	1.115	ug/l	98
95) Naphthalene	15.13	128	23786	4.064	ug/l	100

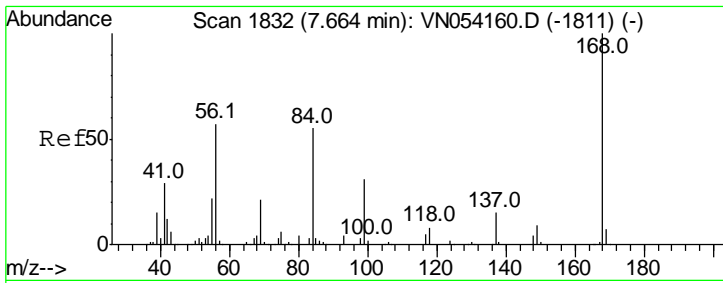
(#) = qualifier out of range (m) = manual integration (+) = signals summed

Data Path : Z:\VOASRV\HPCHEM1\MSVOA N\DATA\VN031619\
 Data File : VN054364.D
 Acq On : 17 Mar 2019 4:38
 Operator : JC/SP
 Sample : K1956-08
 Misc : 5.00mL/MSVOA N/WATER
 ALS Vial : 37 Sample Multiplier: 1

Instrument :
 MSVOA_N
 ClientSampled :
 TP-8

Quant Time: Mar 18 08:20:54 2019
 Quant Method : Z:\VOASRV\HPCHEM1\MSVOA_N\METHODS\82N031219W.M
 Quant Title : SW846 8260
 QLast Update : Wed Mar 13 03:33:31 2019
 Response via : Initial Calibration

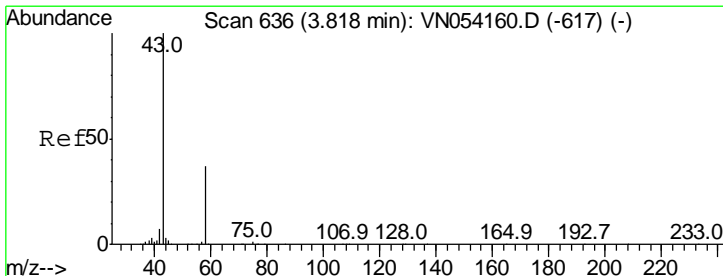
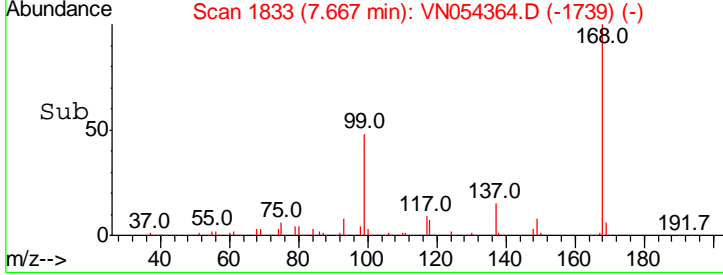
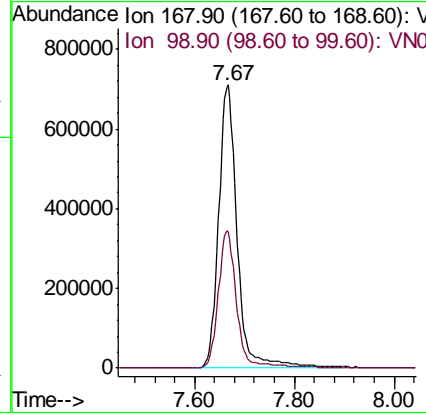
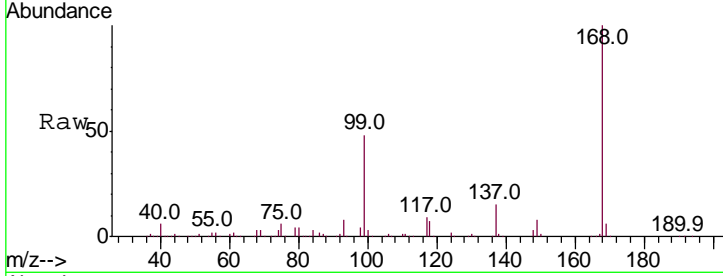




#1
 Pentafluorobenzene
 Concen: 50.000 ug/l
 RT: 7.67 min Scan# 1833
 Delta R.T. 0.00 min
 Lab File: VN054364.D
 Acq: 17 Mar 2019 4:38

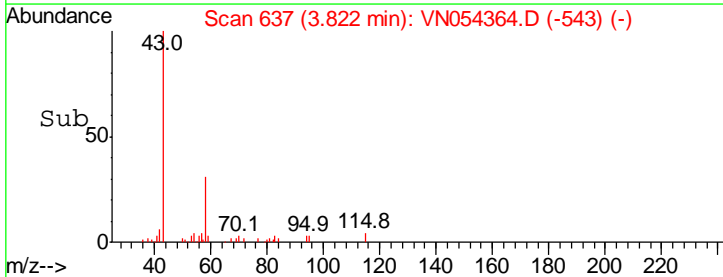
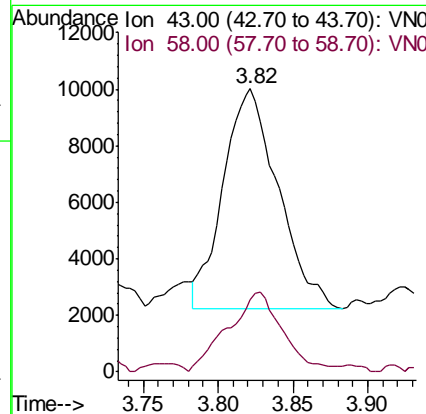
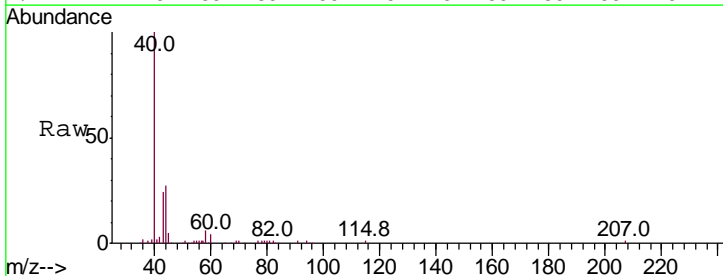
Instrument : MSVOA_N
 ClientSampled : TP-8

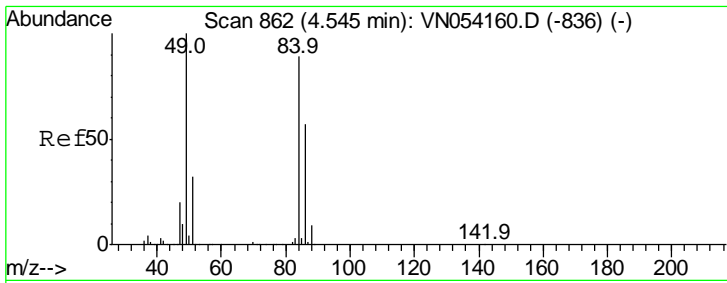
Tgt Ion	Resp	Lower	Upper
168	100		
99	48.0	37.1	55.7



#16
 Acetone
 Concen: 3.561 ug/l
 RT: 3.82 min Scan# 637
 Delta R.T. 0.00 min
 Lab File: VN054364.D
 Acq: 17 Mar 2019 4:38

Tgt Ion	Resp	Lower	Upper
43	100		
58	30.0	29.9	44.9



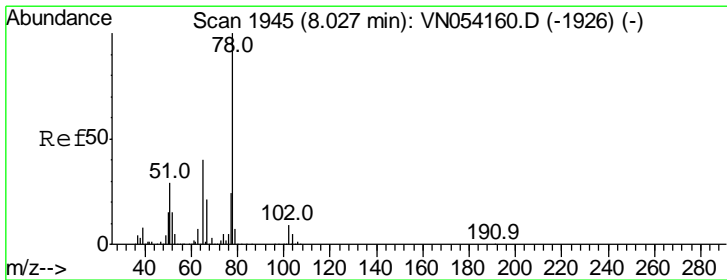
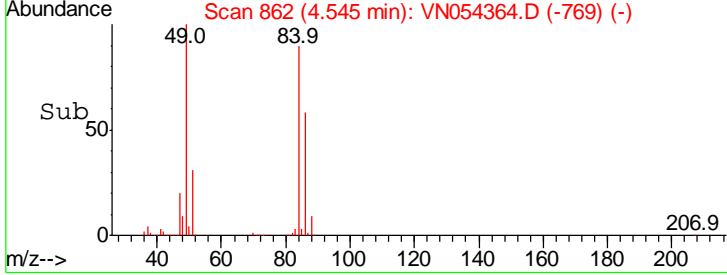
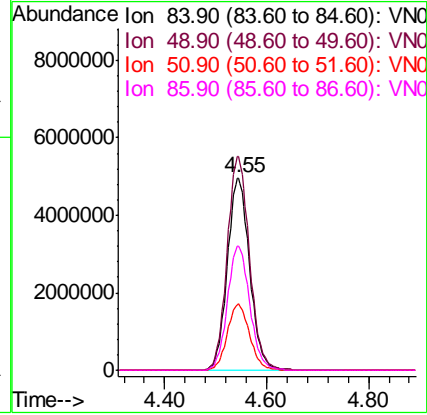
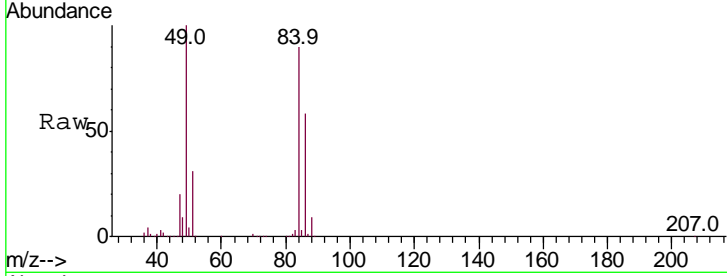


#20
 Methylene Chloride
 Concen: 815.057 ug/l
 RT: 4.55 min Scan# 862
 Delta R.T. 0.00 min
 Lab File: VN054364.D
 Acq: 17 Mar 2019 4:38

Instrument :
 MSVOA_N
ClientSampled :
 TP-8

Tgt Ion: 84 Resp:15044881

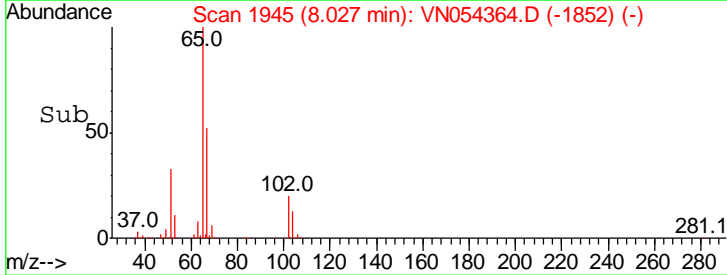
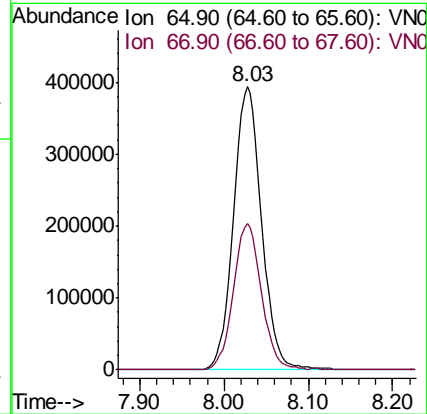
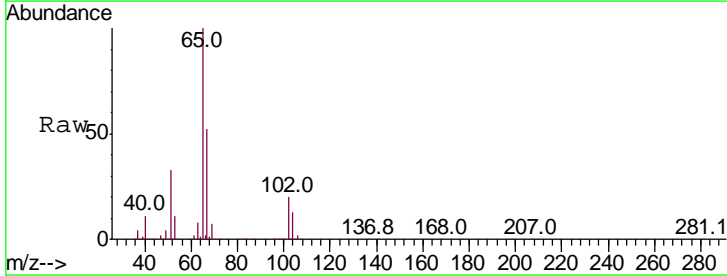
Ion	Ratio	Lower	Upper
84	100		
49	111.0	89.7	134.5
51	34.3	28.2	42.4
86	64.8	50.8	76.2

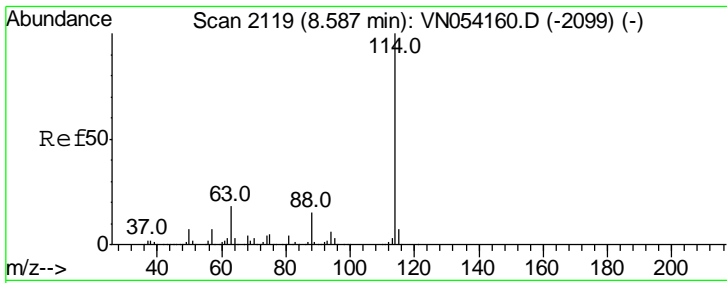


#33
 1,2-Dichloroethane-d4
 Concen: 46.526 ug/l
 RT: 8.03 min Scan# 1945
 Delta R.T. 0.00 min
 Lab File: VN054364.D
 Acq: 17 Mar 2019 4:38

Tgt Ion: 65 Resp: 913474

Ion	Ratio	Lower	Upper
65	100		
67	51.5	0.0	104.6



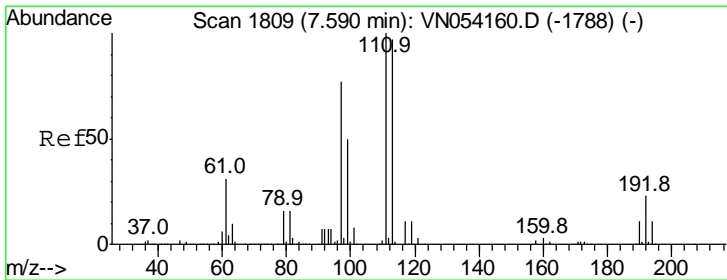
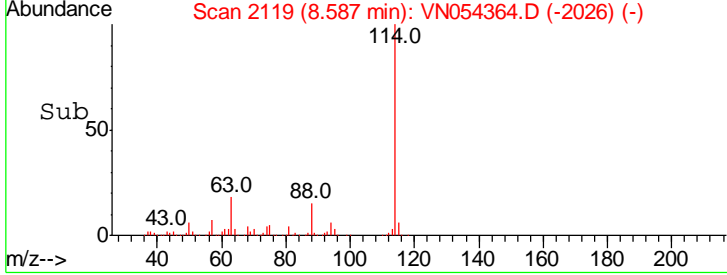
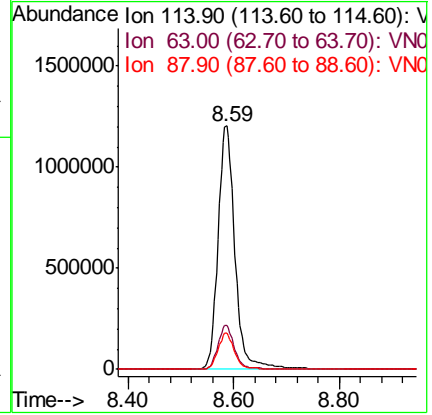
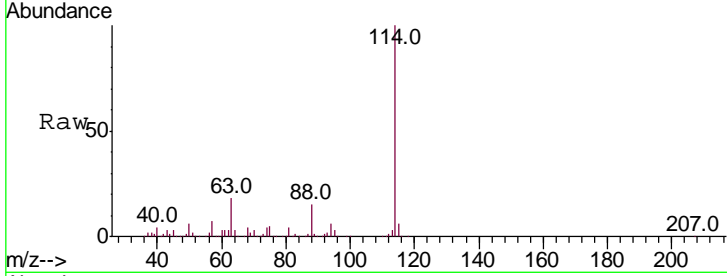


#34
 1,4-Difluorobenzene
 Concen: 50.000 ug/l
 RT: 8.59 min Scan# 2119
 Delta R.T. 0.00 min
 Lab File: VN054364.D
 Acq: 17 Mar 2019 4:38

Instrument : MSVOA_N
 ClientSampled : TP-8

Tgt Ion:114 Resp: 2670687

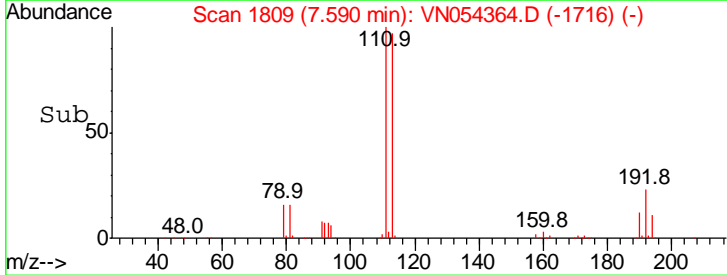
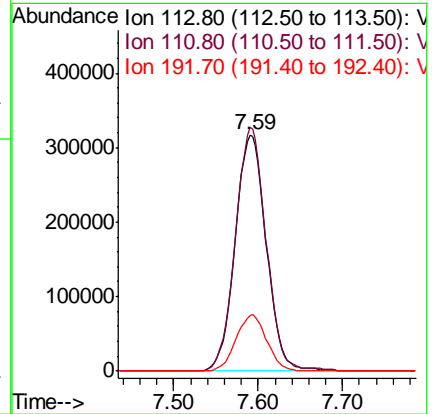
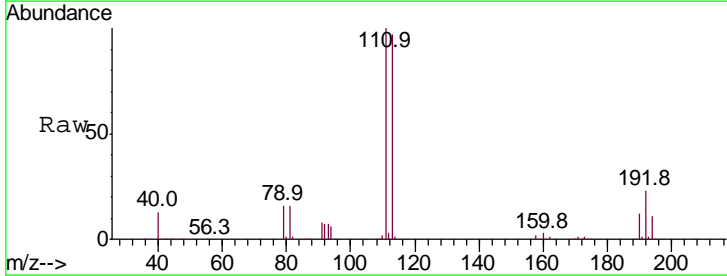
Ion	Ratio	Lower	Upper
114	100		
63	18.0	0.0	35.2
88	15.0	0.0	30.2

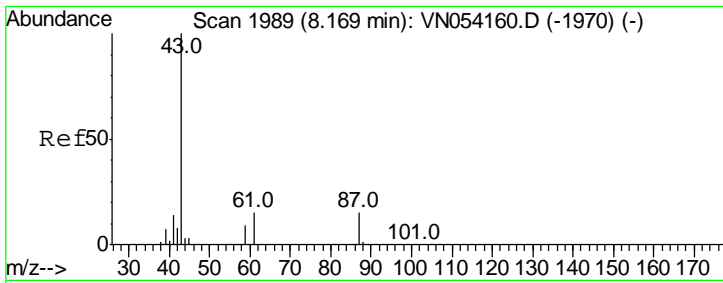


#35
 Dibromofluoromethane
 Concen: 47.215 ug/l
 RT: 7.59 min Scan# 1809
 Delta R.T. 0.00 min
 Lab File: VN054364.D
 Acq: 17 Mar 2019 4:38

Tgt Ion:113 Resp: 813277

Ion	Ratio	Lower	Upper
113	100		
111	102.2	82.2	123.4
192	23.6	19.2	28.8

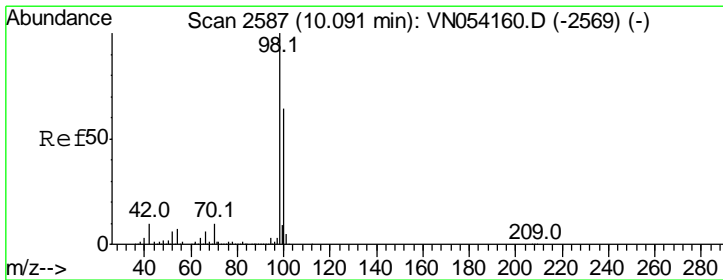
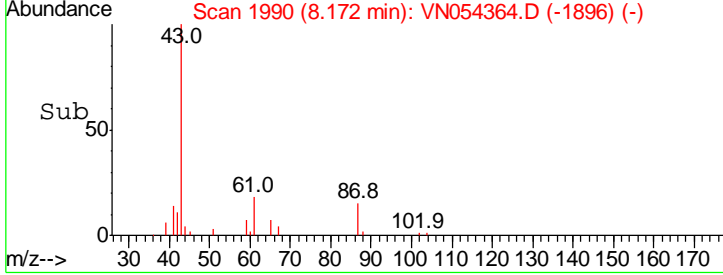
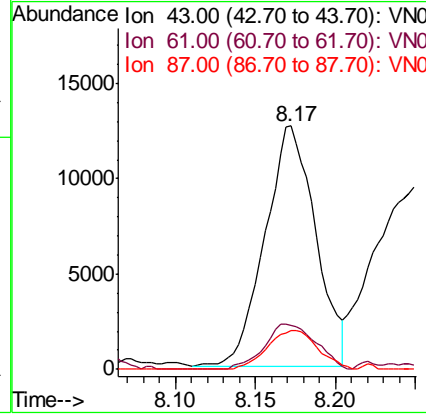
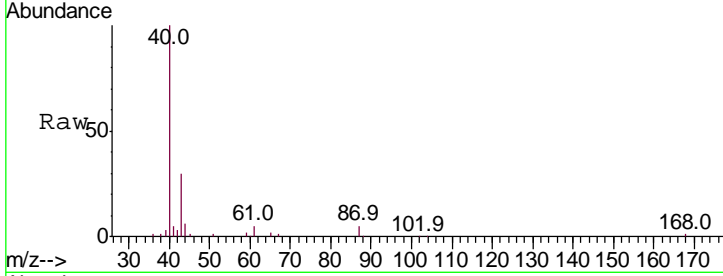




#43
 Isopropyl Acetate
 Concen: 1.115 ug/l
 RT: 8.17 min Scan# 1990
 Delta R.T. 0.00 min
 Lab File: VN054364.D
 Acq: 17 Mar 2019 4:38

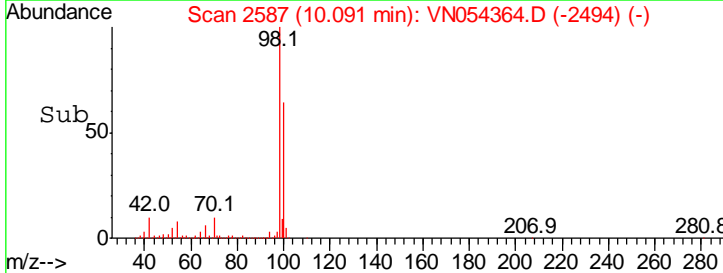
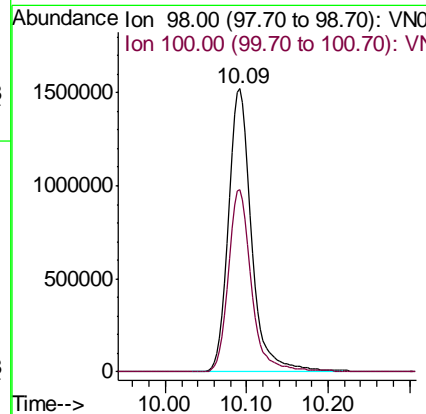
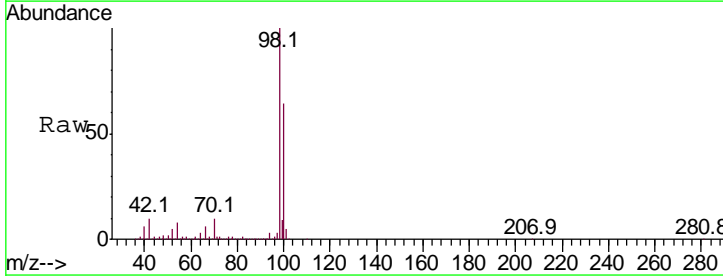
Instrument : MSVOA_N
 ClientSampled : TP-8

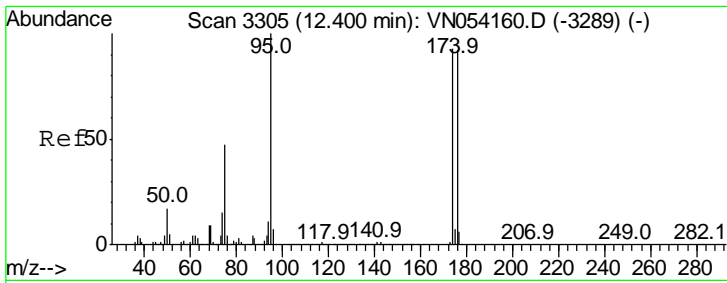
Tgt Ion	Resp	Lower	Upper
43	100		
61	19.1	15.8	23.8
87	16.1	12.0	18.0



#50
 Toluene-d8
 Concen: 48.119 ug/l
 RT: 10.09 min Scan# 2587
 Delta R.T. 0.00 min
 Lab File: VN054364.D
 Acq: 17 Mar 2019 4:38

Tgt Ion	Resp	Lower	Upper
98	100		
100	64.4	51.2	76.8

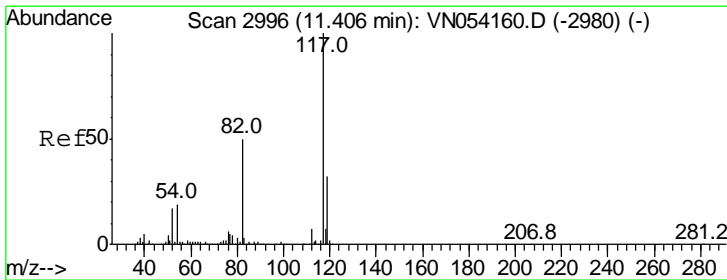
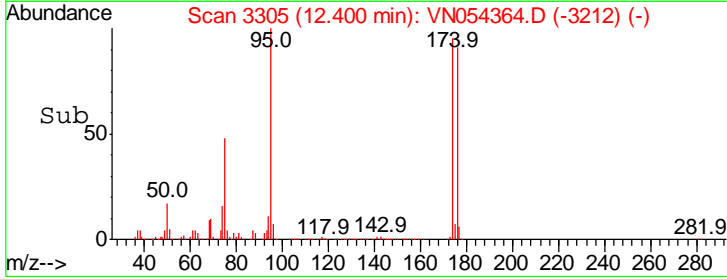
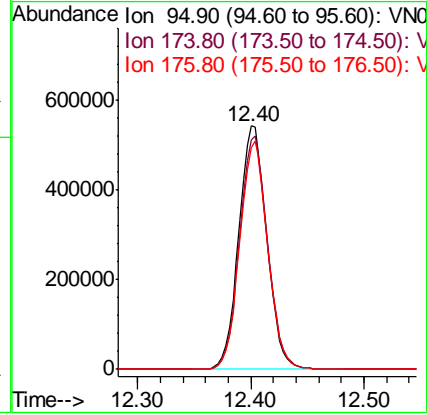
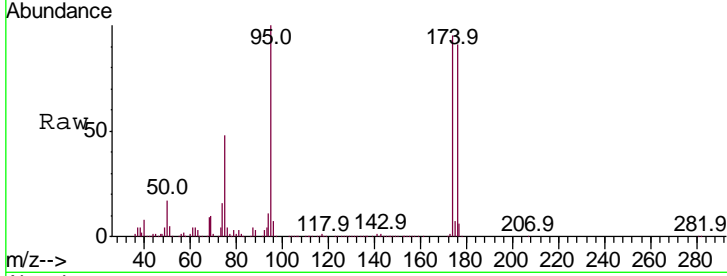




#62
 4-Bromofluorobenzene
 Concen: 42.021 ug/l
 RT: 12.40 min Scan# 3305
 Delta R.T. 0.00 min
 Lab File: VN054364.D
 Acq: 17 Mar 2019 4:38

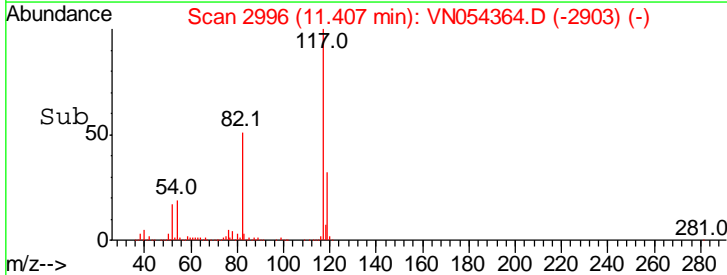
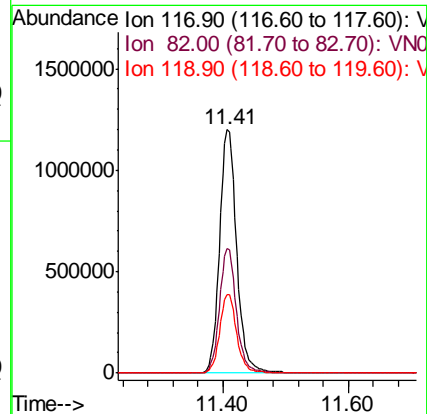
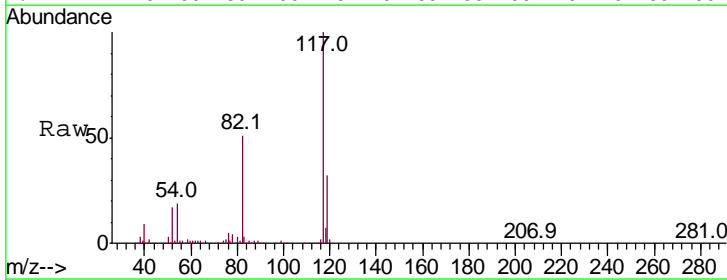
Instrument :
 MSVOA_N
 ClientSampled :
 TP-8

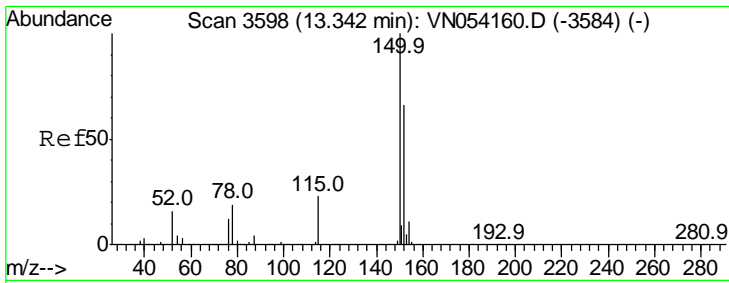
Tgt Ion	Resp	Lower	Upper
95	100		
174	96.4	0.0	191.0
176	93.3	0.0	187.4



#63
 Chlorobenzene-d5
 Concen: 50.000 ug/l
 RT: 11.41 min Scan# 2996
 Delta R.T. 0.00 min
 Lab File: VN054364.D
 Acq: 17 Mar 2019 4:38

Tgt Ion	Resp	Lower	Upper
117	100		
82	50.9	40.0	60.0
119	32.2	25.8	38.6

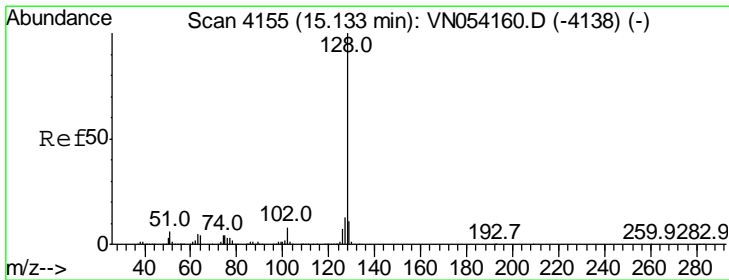
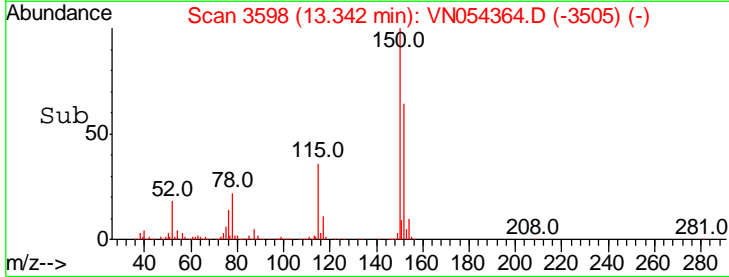
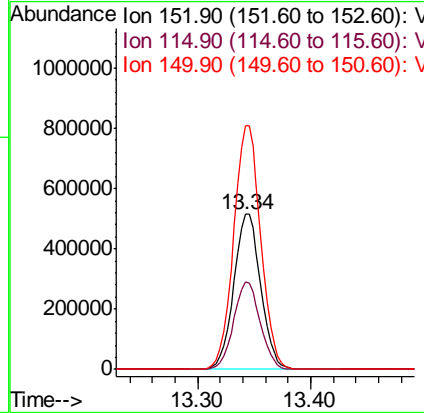
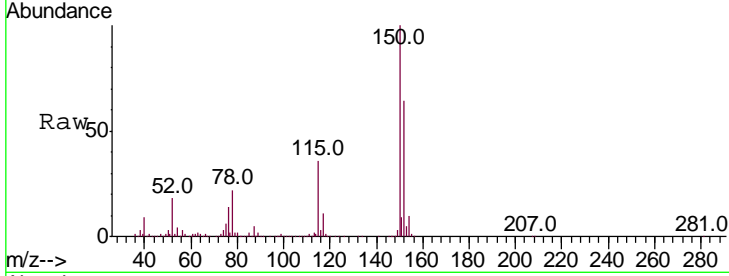




#72
 1,4-Dichlorobenzene-d4
 Concen: 50.000 ug/l
 RT: 13.34 min Scan# 3598
 Delta R.T. 0.00 min
 Lab File: VN054364.D
 Acq: 17 Mar 2019 4:38

Instrument :
 MSVOA_N
 ClientSampled :
 TP-8

Tgt Ion	Resp	Lower	Upper
152	100		
115	55.9	27.2	81.6
150	157.8	0.0	349.2



#95
 Naphthalene
 Concen: 4.064 ug/l
 RT: 15.13 min Scan# 4155
 Delta R.T. 0.00 min
 Lab File: VN054364.D
 Acq: 17 Mar 2019 4:38

Tgt Ion	Resp	Lower	Upper
128	100		
127	12.8	10.1	15.1
129	10.8	8.7	13.1

