

Data Path : Z:\VOASRV\HPCHEM1\MSVOA N\DATA\VN031620\
 Data File : VN060522.D
 Acq On : 16 Mar 2020 14:52
 Operator : JC/MD
 Sample : L1933-03
 Misc : 5.00mL/MSVOA N/WATER
 ALS Vial : 10 Sample Multiplier: 1

Instrument :
 MSVOA_N
 ClientSampleId :
 72-12002

Quant Time: Mar 17 11:42:44 2020
 Quant Method : Z:\VOASRV\HPCHEM1\MSVOA_N\METHODS\82N022720W.M
 Quant Title : SW846 8260
 QLast Update : Thu Feb 27 13:52:50 2020
 Response via : Initial Calibration

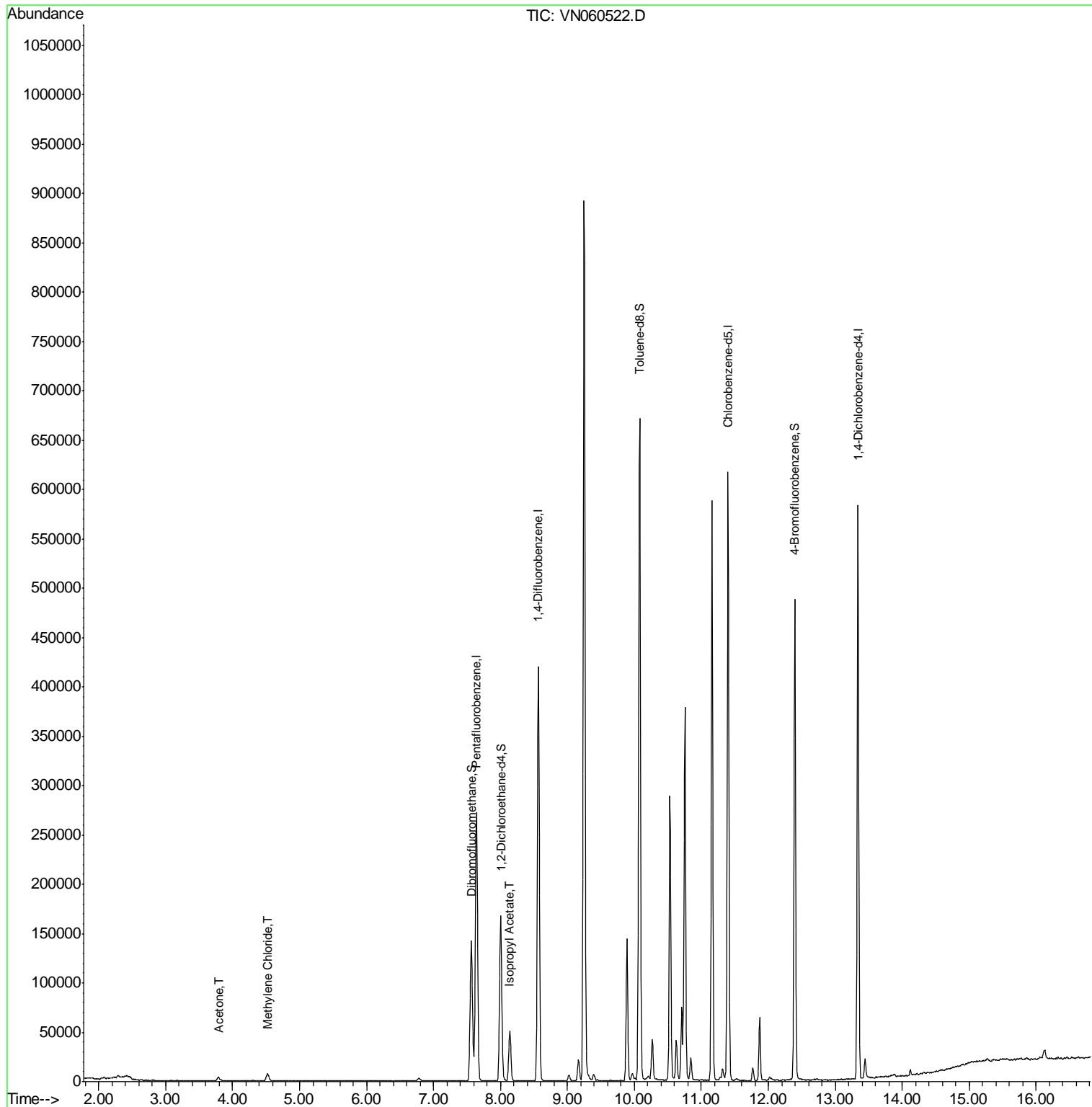
Internal Standards	R.T.	QIon	Response	Conc	Units	Dev(Min)
1) Pentafluorobenzene	7.64	168	225199	50.00	ug/l	0.00
34) 1,4-Difluorobenzene	8.57	114	377120	50.00	ug/l	0.00
63) Chlorobenzene-d5	11.40	117	350506	50.00	ug/l	0.00
72) 1,4-Dichlorobenzene-d4	13.34	152	152808	50.00	ug/l	0.00
System Monitoring Compounds						
33) 1,2-Dichloroethane-d4	8.00	65	145965	50.52	ug/l	0.00
Spiked Amount	50.000		Recovery	=	101.04%	
35) Dibromofluoromethane	7.56	113	110762	63.28	ug/l	0.00
Spiked Amount	50.000		Recovery	=	126.56%	
50) Toluene-d8	10.08	98	465764	52.57	ug/l	0.00
Spiked Amount	50.000		Recovery	=	105.14%	
62) 4-Bromofluorobenzene	12.40	95	169880	50.58	ug/l	0.00
Spiked Amount	50.000		Recovery	=	101.16%	
Target Compounds						
16) Acetone	3.79	43	7955	8.526	ug/l	94
20) Methylene Chloride	4.52	84	5751	2.244	ug/l	95
43) Isopropyl Acetate	8.14	43	61180	10.269	ug/l #	91

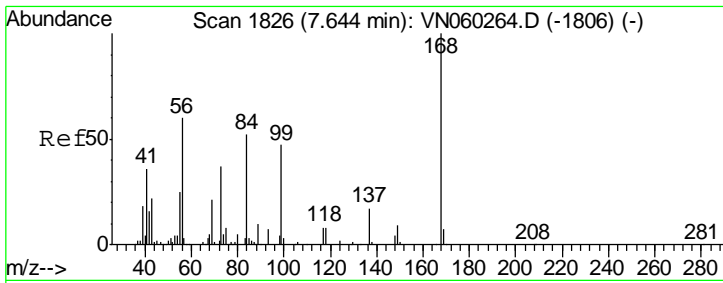
(#) = qualifier out of range (m) = manual integration (+) = signals summed

Data Path : Z:\VOASRV\HPCHEM1\MSVOA N\DATA\VN031620\
 Data File : VN060522.D
 Acq On : 16 Mar 2020 14:52
 Operator : JC/MD
 Sample : L1933-03
 Misc : 5.00mL/MSVOA N/WATER
 ALS Vial : 10 Sample Multiplier: 1

Instrument :
 MSVOA_N
 ClientSampleId :
 72-12002

Quant Time: Mar 17 11:42:44 2020
 Quant Method : Z:\VOASRV\HPCHEM1\MSVOA_N\METHODS\82N022720W.M
 Quant Title : SW846 8260
 QLast Update : Thu Feb 27 13:52:50 2020
 Response via : Initial Calibration

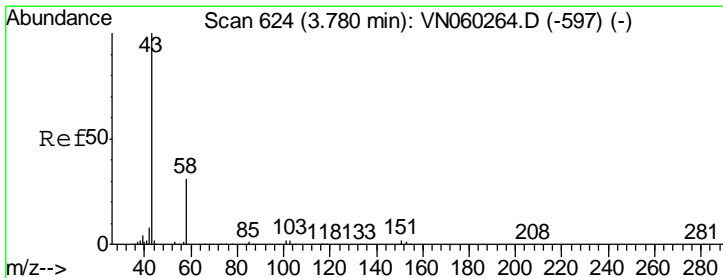
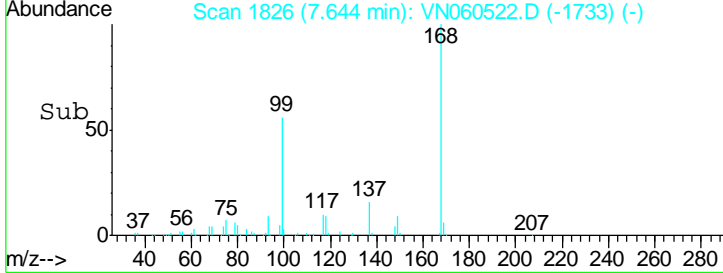
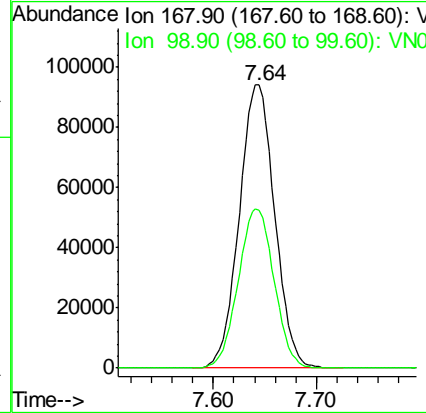
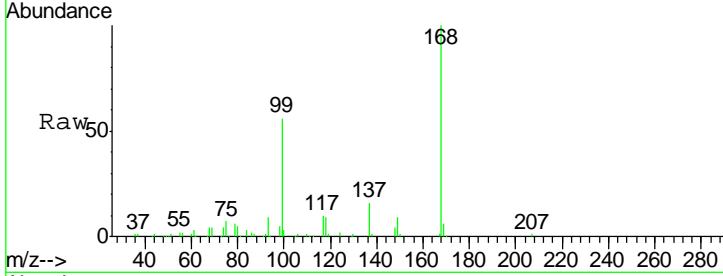




#1
 Pentafluorobenzene
 Concen: 50.000 ug/l
 RT: 7.64 min Scan# 1826
 Delta R.T. -0.00 min
 Lab File: VN060522.D
 Acq: 16 Mar 2020 14:52

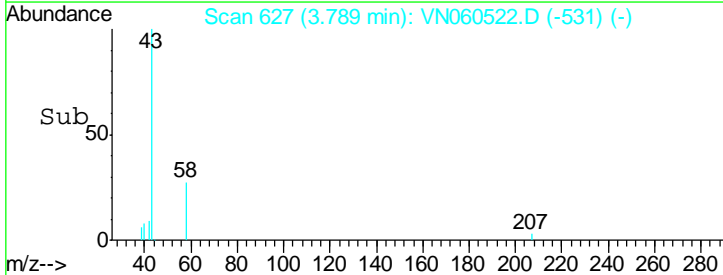
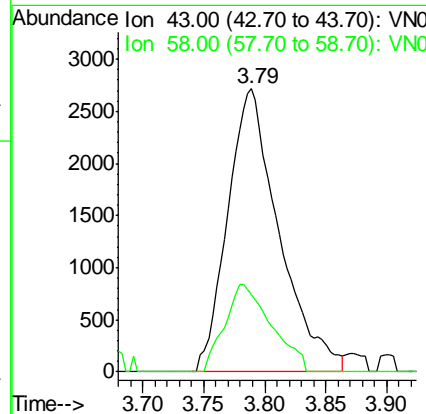
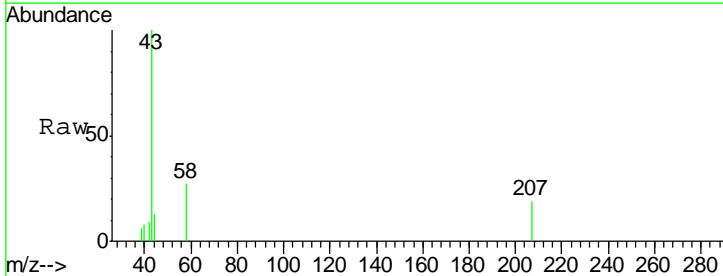
Instrument :
 MSVOA_N
 ClientSampled :
 72-12002

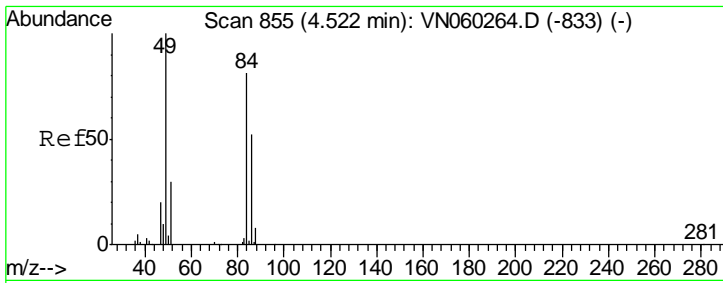
Tgt Ion: 168 Resp: 225199
 Ion Ratio Lower Upper
 168 100
 99 55.7 44.7 67.1



#16
 Acetone
 Concen: 8.526 ug/l
 RT: 3.79 min Scan# 627
 Delta R.T. 0.01 min
 Lab File: VN060522.D
 Acq: 16 Mar 2020 14:52

Tgt Ion: 43 Resp: 7955
 Ion Ratio Lower Upper
 43 100
 58 27.2 24.6 36.8

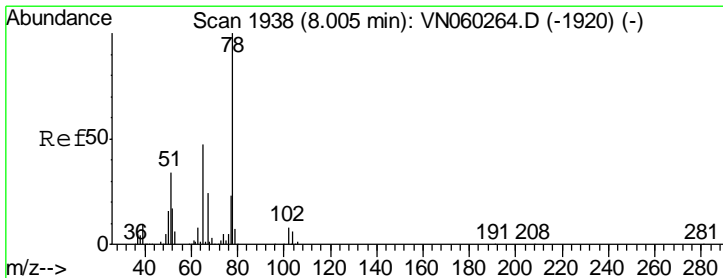
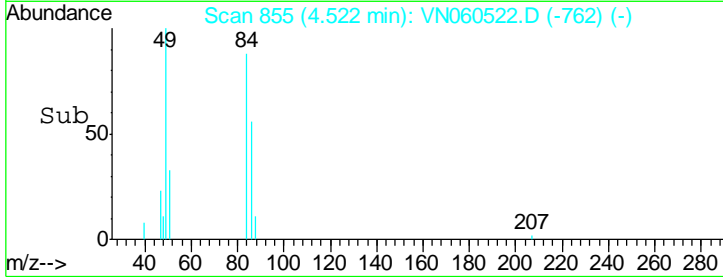
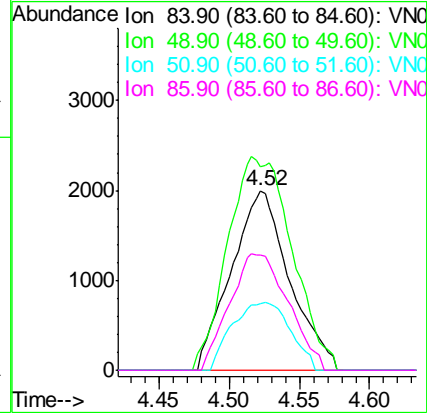
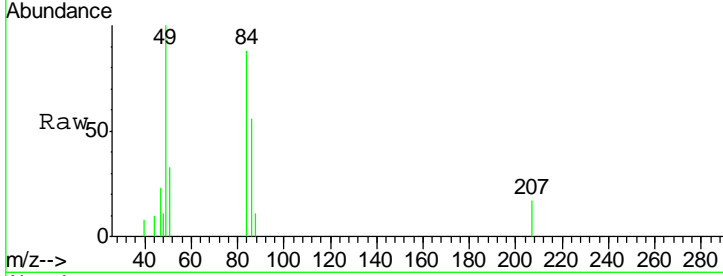




#20
 Methylene Chloride
 Concen: 2.244 ug/l
 RT: 4.52 min Scan# 855
 Delta R.T. -0.00 min
 Lab File: VN060522.D
 Acq: 16 Mar 2020 14:52

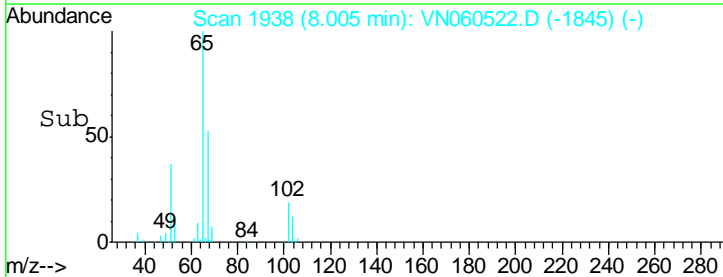
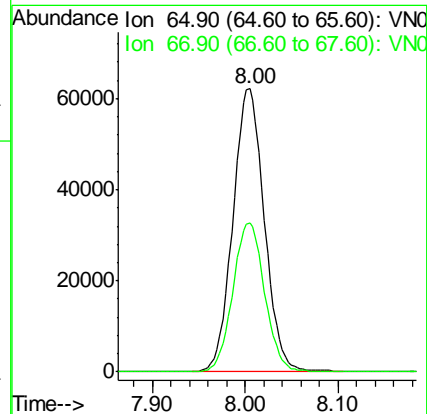
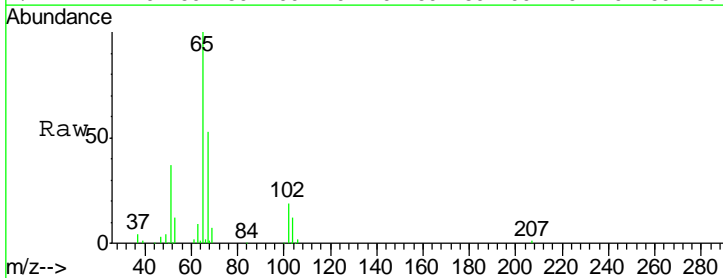
Instrument :
 MSVOA_N
 ClientSampled :
 72-12002

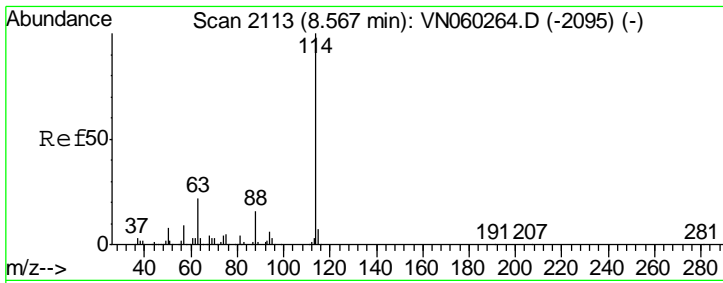
Tgt Ion	Resp	Lower	Upper
84	100		
49	113.5	99.3	148.9
51	37.3	30.1	45.1
86	64.1	51.1	76.7



#33
 1,2-Dichloroethane-d4
 Concen: 50.519 ug/l
 RT: 8.00 min Scan# 1938
 Delta R.T. -0.00 min
 Lab File: VN060522.D
 Acq: 16 Mar 2020 14:52

Tgt Ion	Resp	Lower	Upper
65	100		
67	53.2	0.0	103.8

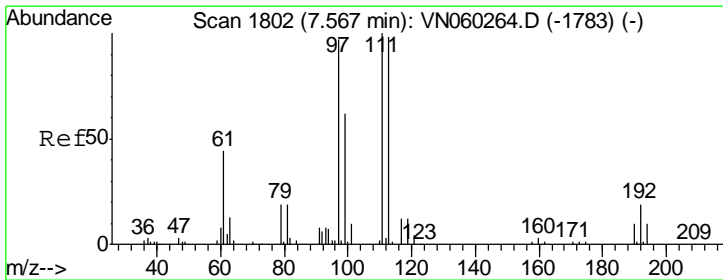
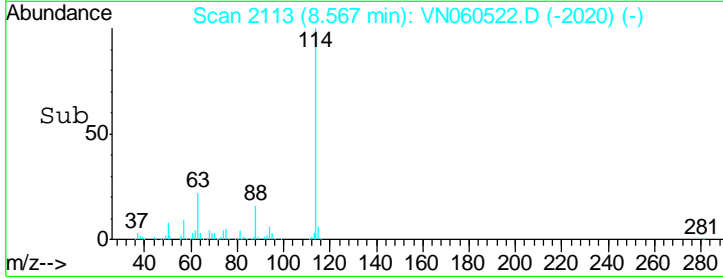
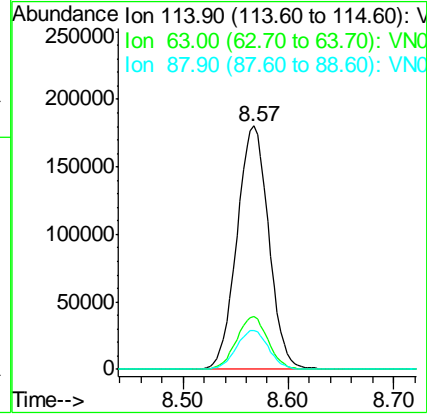
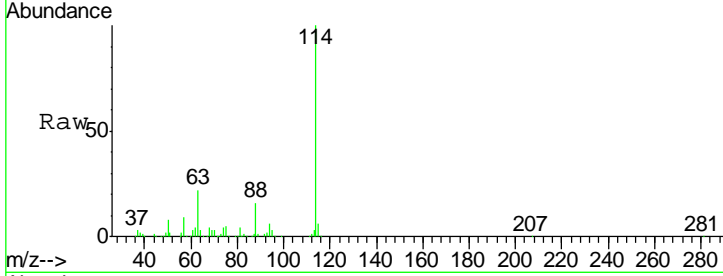




#34
 1,4-Difluorobenzene
 Concen: 50.000 ug/l
 RT: 8.57 min Scan# 2113
 Delta R.T. -0.00 min
 Lab File: VN060522.D
 Acq: 16 Mar 2020 14:52

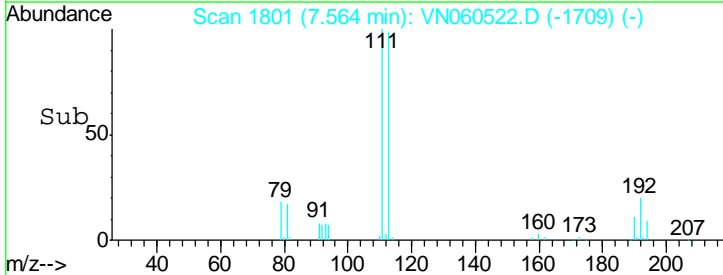
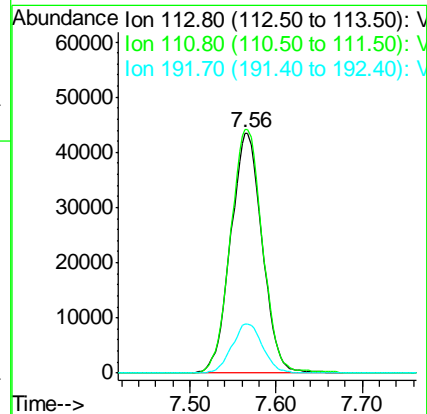
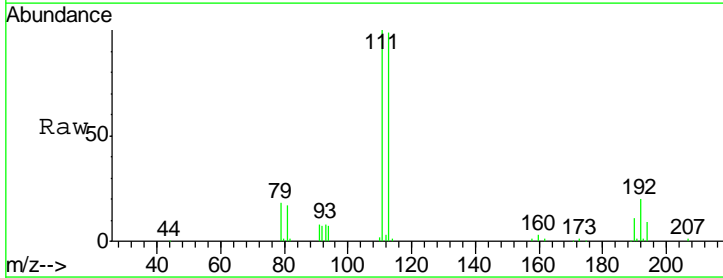
Instrument :
 MSVOA_N
 ClientSampled :
 72-12002

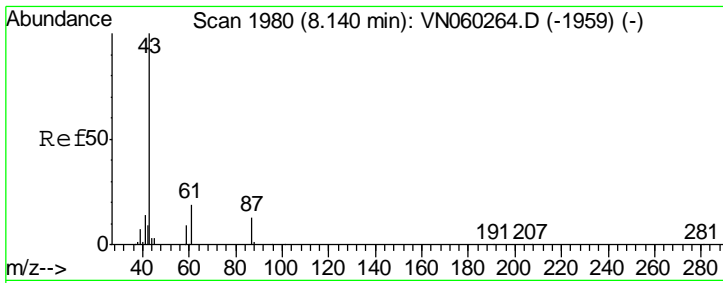
Tgt Ion	Resp	Lower	Upper
114	377120		
63	21.7	0.0	43.2
88	15.8	0.0	31.6



#35
 Dibromofluoromethane
 Concen: 63.276 ug/l
 RT: 7.56 min Scan# 1801
 Delta R.T. -0.00 min
 Lab File: VN060522.D
 Acq: 16 Mar 2020 14:52

Tgt Ion	Resp	Lower	Upper
113	110762		
111	103.0	82.4	123.6
192	19.8	16.2	24.2

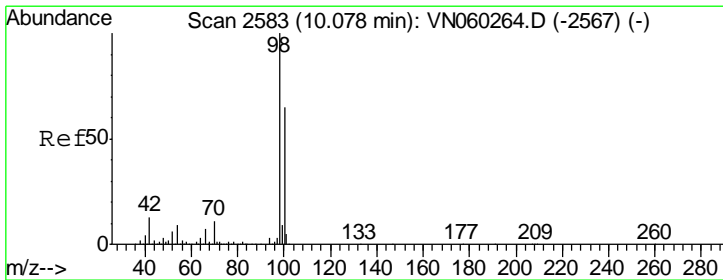
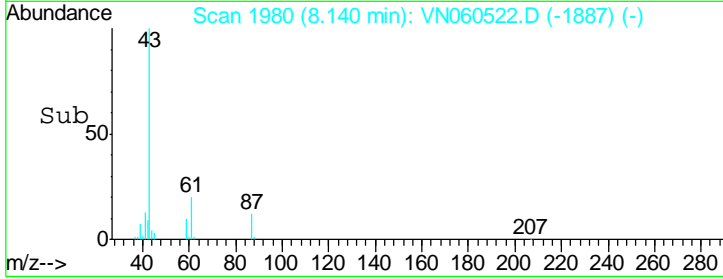
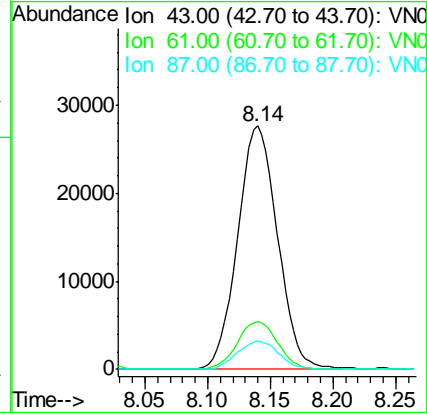
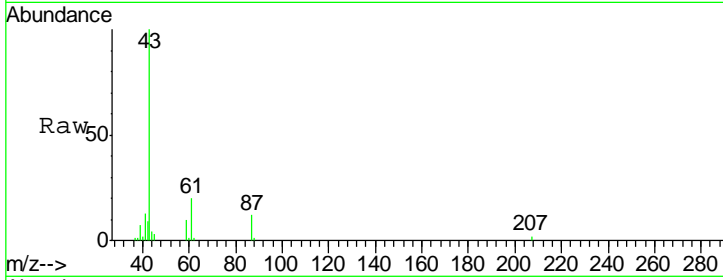




#43
 Isopropyl Acetate
 Concen: 10.269 ug/l
 RT: 8.14 min Scan# 1980
 Delta R.T. -0.00 min
 Lab File: VN060522.D
 Acq: 16 Mar 2020 14:52

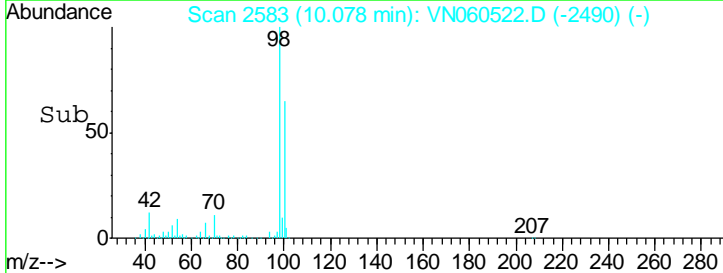
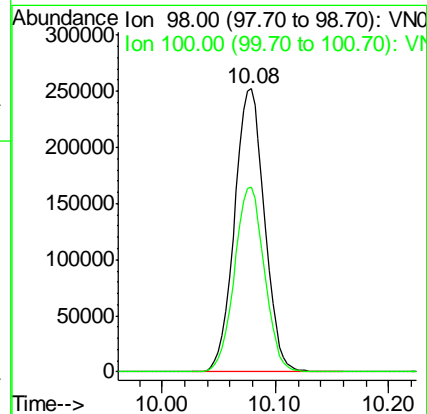
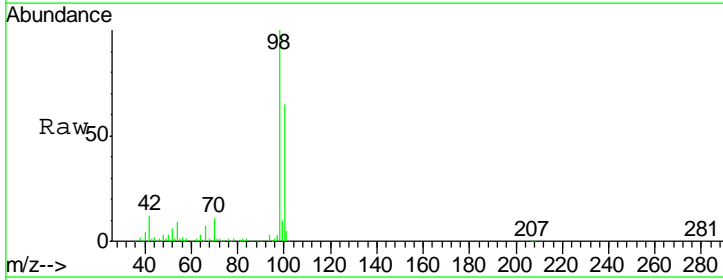
Instrument :
 MSVOA_N
 ClientSampled :
 72-12002

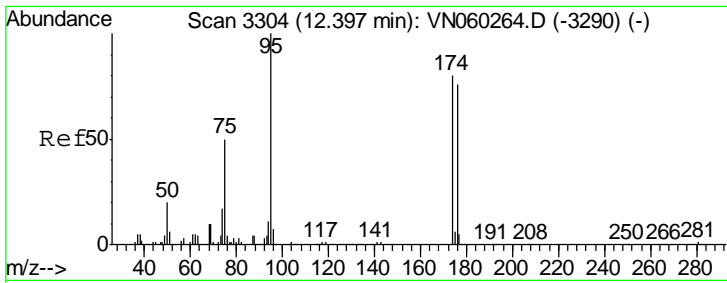
Tgt Ion	Resp	Lower	Upper
43	61180		
61	19.8	20.9	31.3#
87	12.0	10.6	16.0



#50
 Toluene-d8
 Concen: 52.573 ug/l
 RT: 10.08 min Scan# 2583
 Delta R.T. -0.00 min
 Lab File: VN060522.D
 Acq: 16 Mar 2020 14:52

Tgt Ion	Resp	Lower	Upper
98	465764		
100	65.2	52.2	78.2

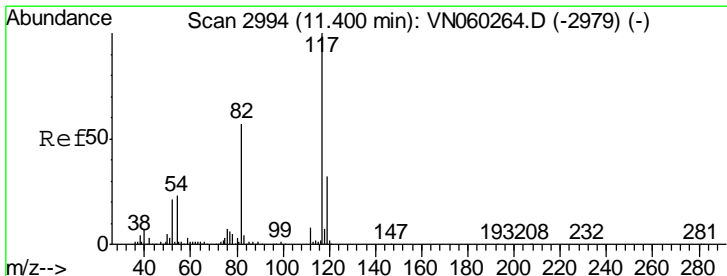
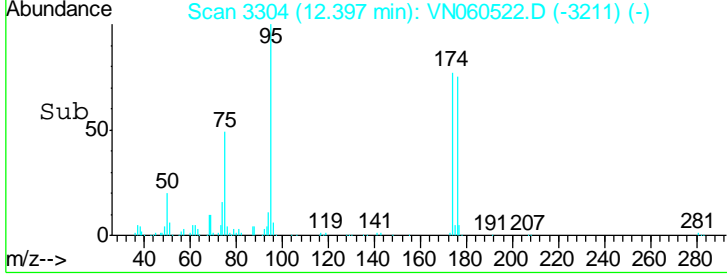
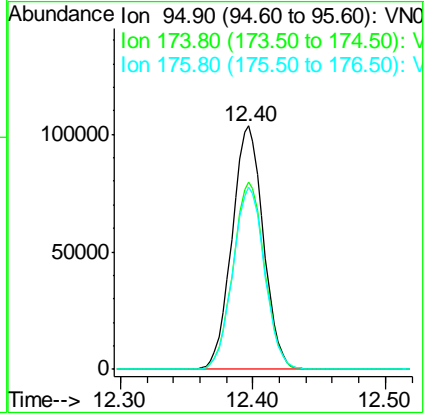
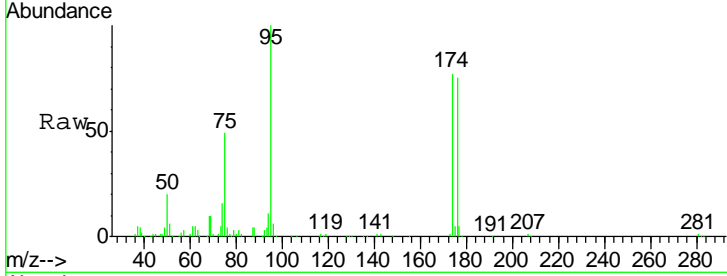




#62
 4-Bromofluorobenzene
 Concen: 50.584 ug/l
 RT: 12.40 min Scan# 3304
 Delta R.T. -0.00 min
 Lab File: VN060522.D
 Acq: 16 Mar 2020 14:52

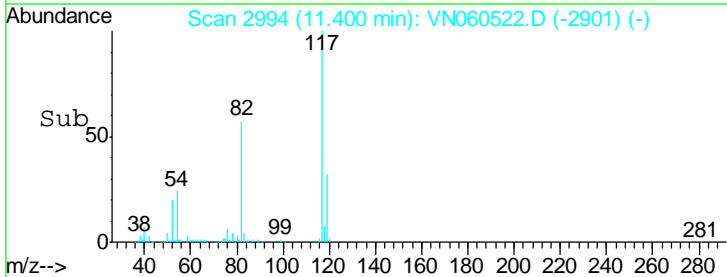
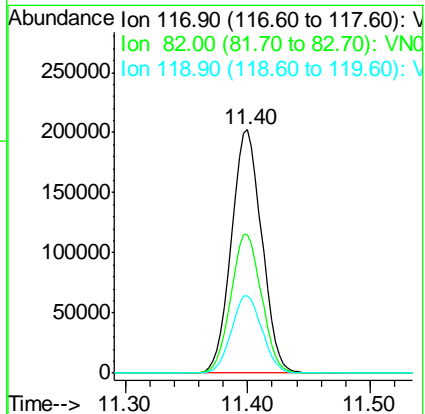
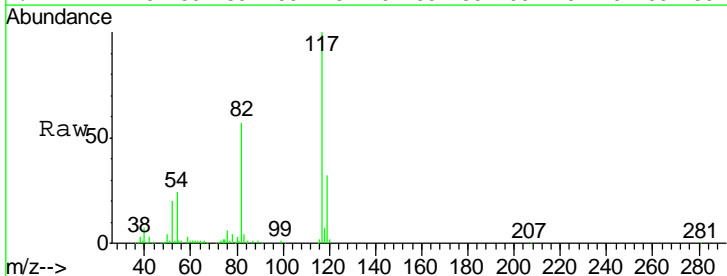
Instrument : MSVOA_N
 ClientSampled : 72-12002

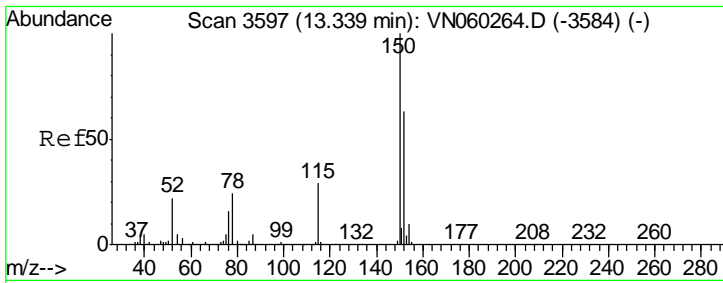
Tgt Ion	Resp	Lower	Upper
95	169880		
174	77.6	0.0	159.2
176	75.6	0.0	153.8



#63
 Chlorobenzene-d5
 Concen: 50.000 ug/l
 RT: 11.40 min Scan# 2994
 Delta R.T. -0.00 min
 Lab File: VN060522.D
 Acq: 16 Mar 2020 14:52

Tgt Ion	Resp	Lower	Upper
117	350506		
82	57.1	45.8	68.6
119	32.0	25.8	38.8





#72
 1,4-Dichlorobenzene-d4
 Concen: 50.000 ug/l
 RT: 13.34 min Scan# 3597
 Delta R.T. -0.00 min
 Lab File: VN060522.D
 Acq: 16 Mar 2020 14:52

Instrument :
 MSVOA_N
 ClientSampleId :
 72-12002

Tot Ion	Resp	Lower	Upper
152	152808		
115	59.6	30.0	90.0
150	156.4	0.0	349.6

