

Data Path : Z:\voasrv\HPCHEM1\MSVOA\_N\Data\VN031623\  
 Data File : VN077019.D  
 Acq On : 16 Mar 2023 14:07  
 Operator : JC\MD  
 Sample : 01945-02  
 Misc : 5.0mL/MSVOA\_N/WATER  
 ALS Vial : 7 Sample Multiplier: 1

Instrument :  
 MSVOA\_N  
 ClientSampleId :  
 230315024-01-TRIP-BLANK

Quant Time: Mar 17 03:23:20 2023  
 Quant Method : Z:\voasrv\HPCHEM1\MSVOA\_N\methods\624N030823W.M  
 Quant Title : METHOD 624 VOLATILE ORGANIC ANALYSIS  
 QLast Update : Thu Mar 09 04:16:54 2023  
 Response via : Initial Calibration

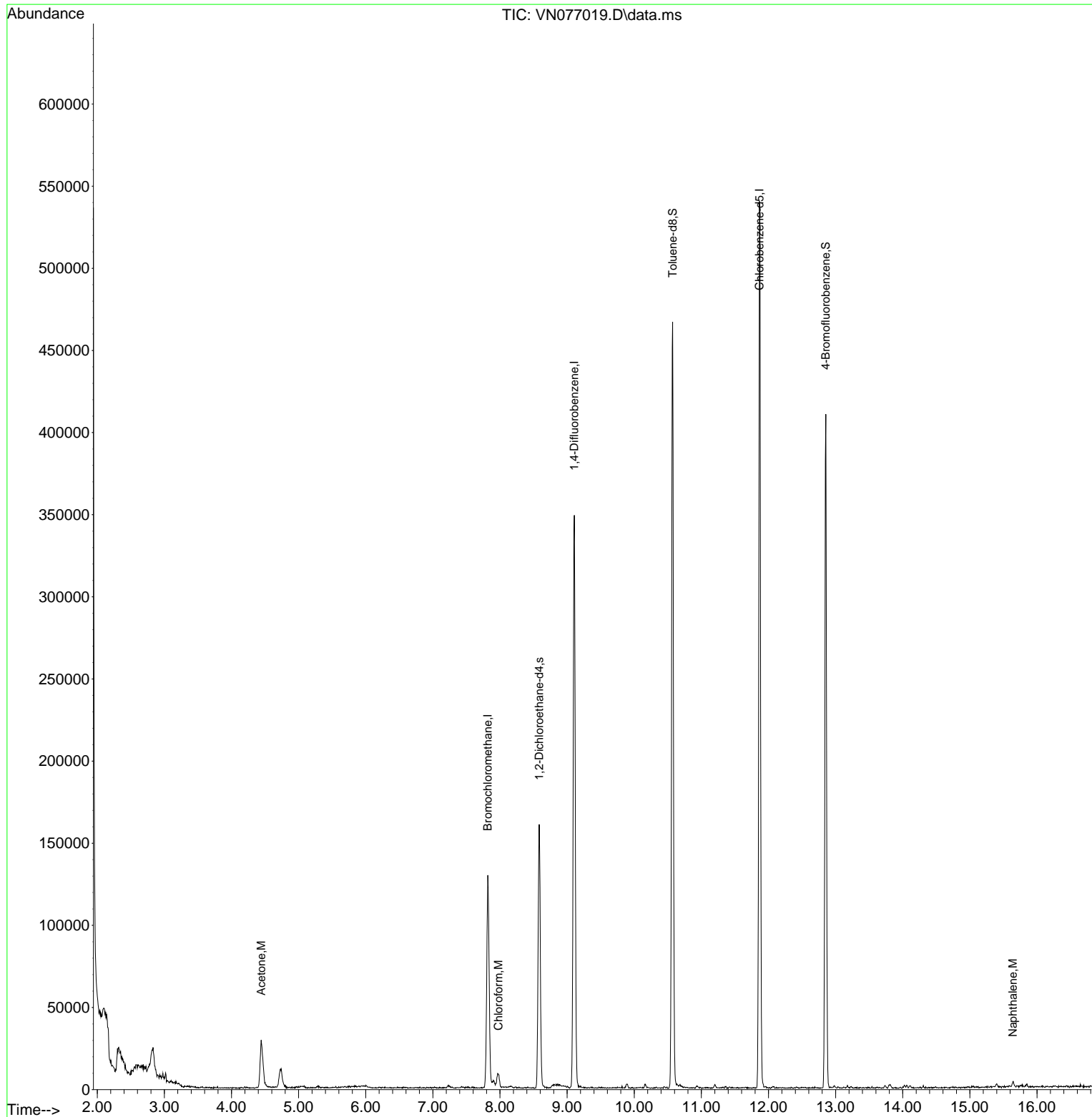
Compound	R.T.	QIon	Response	Conc	Units	Dev(Min)
-----						
Internal Standards						
1) Bromochloromethane	7.819	128	42990	30.000	ug/l	0.00
28) 1,4-Difluorobenzene	9.107	114	294482	30.000	ug/l	0.00
57) Chlorobenzene-d5	11.866	117	305410	30.000	ug/l	0.00
System Monitoring Compounds						
27) 1,2-Dichloroethane-d4	8.584	65	131226	33.210	ug/l	0.00
Spiked Amount	30.000	Range 91 - 110	Recovery	=	110.700%#	
60) 4-Bromofluorobenzene	12.854	95	147393	25.499	ug/l	0.00
Spiked Amount	30.000	Range 63 - 112	Recovery	=	85.000%	
63) Toluene-d8	10.572	98	323232	30.090	ug/l	0.00
Spiked Amount	30.000	Range 91 - 112	Recovery	=	100.300%	
Target Compounds						
						Qvalue
15) Acetone	4.443	58	17101	24.623	ug/l	81
25) Chloroform	7.978	83	8780	0.901	ug/l	92
91) Naphthalene	15.642	128	3556	0.230	ug/l #	83
-----						

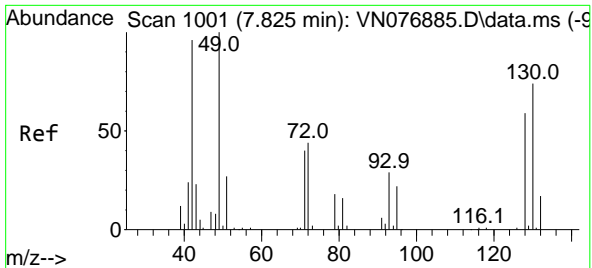
(#) = qualifier out of range (m) = manual integration (+) = signals summed

Data Path : Z:\voasrv\HPCHEM1\MSVOA\_N\Data\VN031623\  
 Data File : VN077019.D  
 Acq On : 16 Mar 2023 14:07  
 Operator : JC\MD  
 Sample : 01945-02  
 Misc : 5.0mL/MSVOA\_N/WATER  
 ALS Vial : 7 Sample Multiplier: 1

Instrument :  
 MSVOA\_N  
 ClientSampleId :  
 230315024-01-TRIP-BLANK

Quant Time: Mar 17 03:23:20 2023  
 Quant Method : Z:\voasrv\HPCHEM1\MSVOA\_N\methods\624N030823W.M  
 Quant Title : METHOD 624 VOLATILE ORGANIC ANALYSIS  
 QLast Update : Thu Mar 09 04:16:54 2023  
 Response via : Initial Calibration



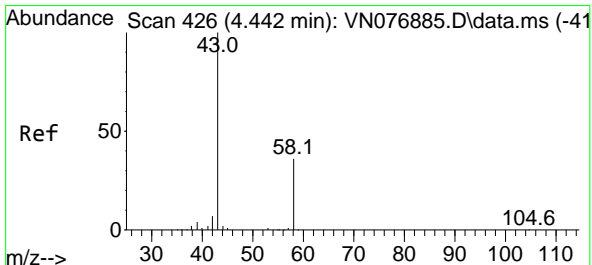
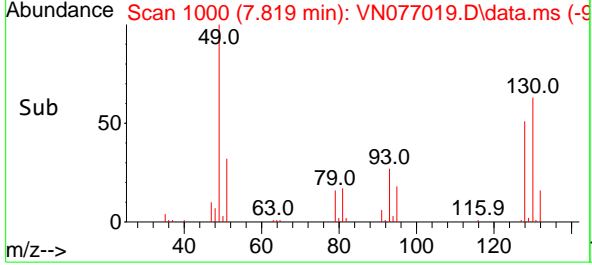
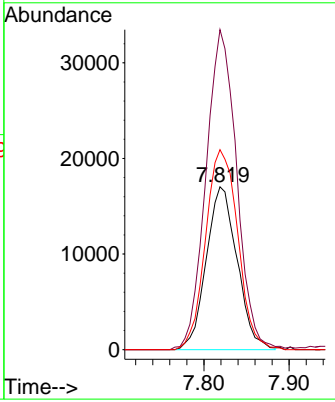
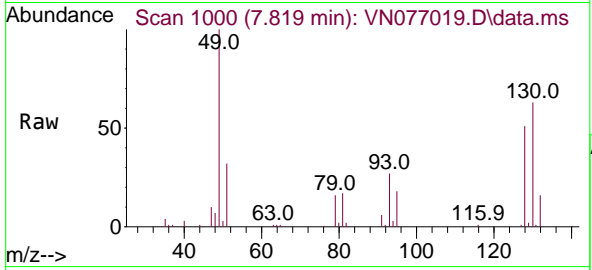


#1  
 Bromochloromethane  
 Concen: 30.000 ug/l  
 RT: 7.819 min Scan# 1000  
 Delta R.T. -0.006 min  
 Lab File: VN077019.D  
 Acq: 16 Mar 2023 14:07

Instrument : MSVOA\_N  
 ClientSampleId : 230315024-01-TRIP-BLANK

Tgt Ion:128 Resp: 42990

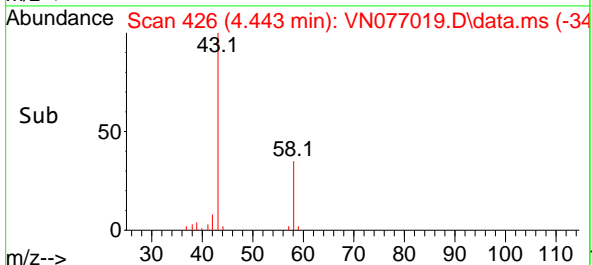
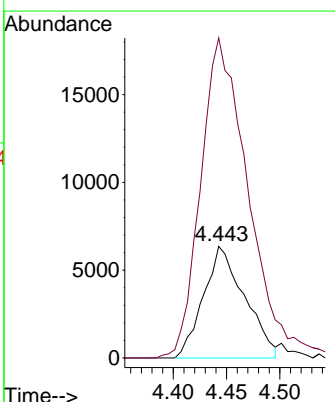
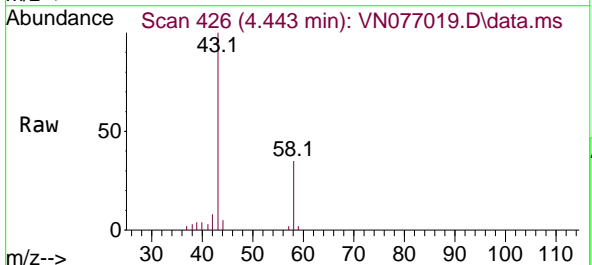
Ion	Ratio	Lower	Upper
128	100		
49	195.6	0.0	461.8
130	128.3	0.0	295.3

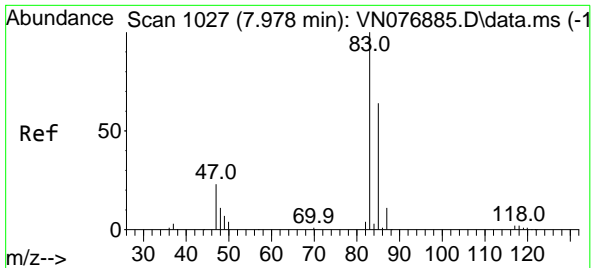


#15  
 Acetone  
 Concen: 24.623 ug/l  
 RT: 4.443 min Scan# 426  
 Delta R.T. 0.006 min  
 Lab File: VN077019.D  
 Acq: 16 Mar 2023 14:07

Tgt Ion: 58 Resp: 17101

Ion	Ratio	Lower	Upper
58	100		
43	279.4	255.4	383.0

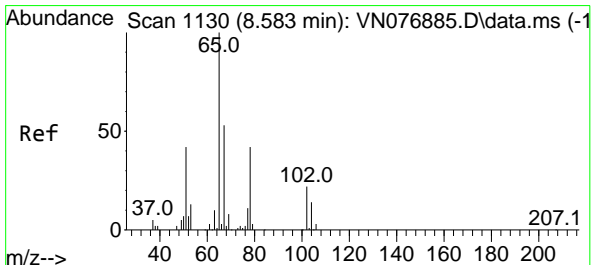
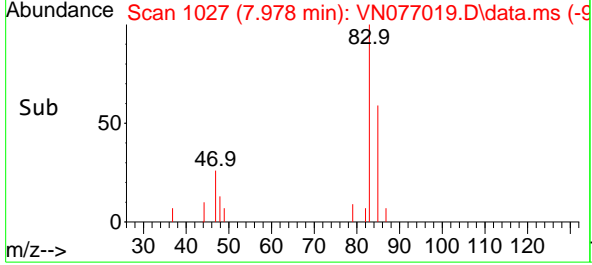
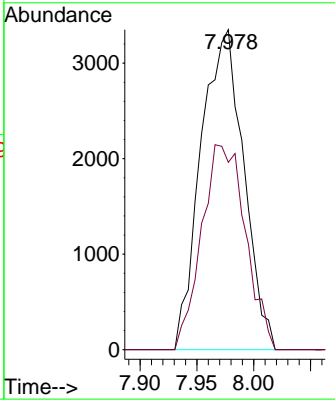
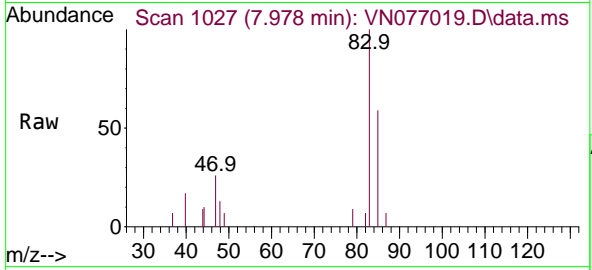




#25  
 Chloroform  
 Concen: 0.901 ug/l  
 RT: 7.978 min Scan# 1027  
 Delta R.T. 0.006 min  
 Lab File: VN077019.D  
 Acq: 16 Mar 2023 14:07

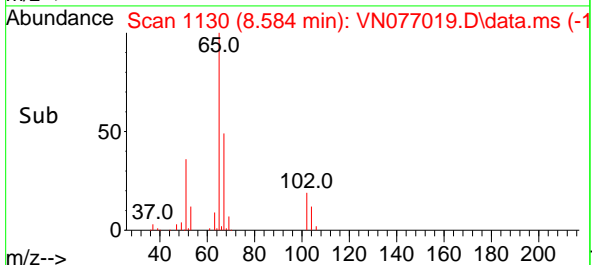
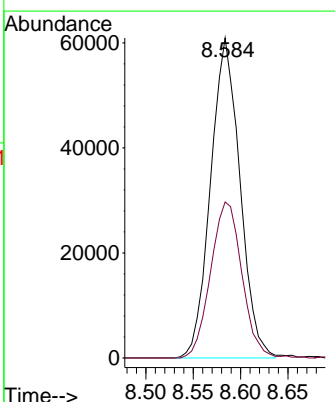
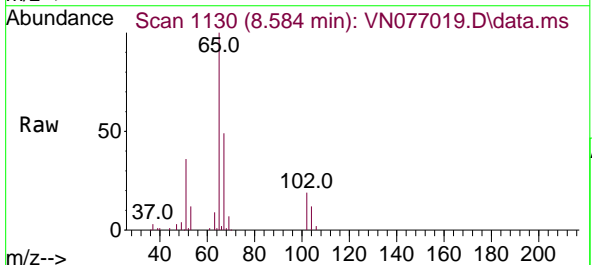
Instrument : MSVOA\_N  
 ClientSampleId : 230315024-01-TRIP-BLANK

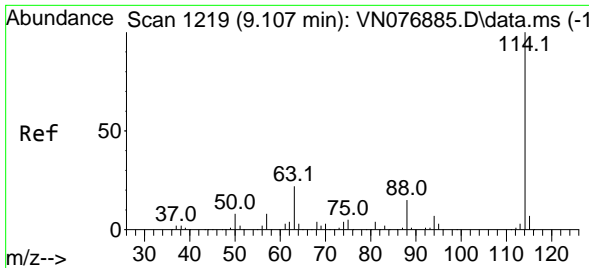
Tgt Ion: 83 Resp: 8780  
 Ion Ratio Lower Upper  
 83 100  
 85 58.5 51.8 77.6



#27  
 1,2-Dichloroethane-d4  
 Concen: 33.210 ug/l  
 RT: 8.584 min Scan# 1130  
 Delta R.T. 0.001 min  
 Lab File: VN077019.D  
 Acq: 16 Mar 2023 14:07

Tgt Ion: 65 Resp: 131226  
 Ion Ratio Lower Upper  
 65 100  
 67 51.8 40.9 61.3

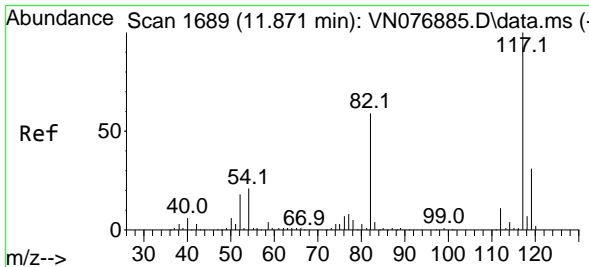
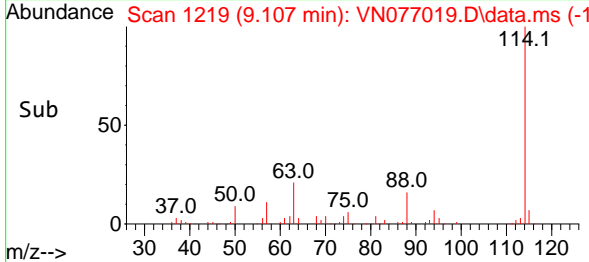
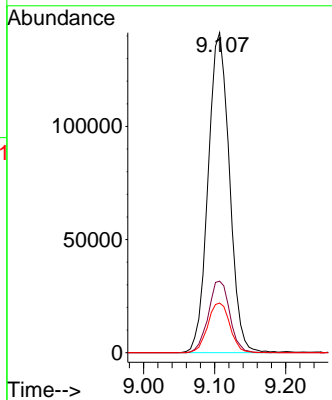
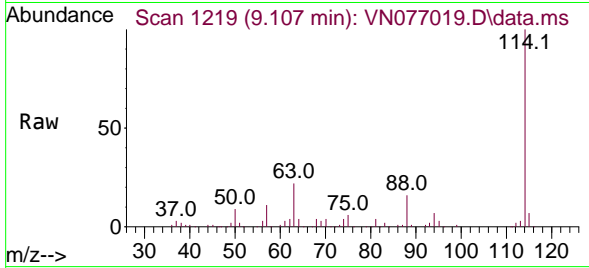




#28  
 1,4-Difluorobenzene  
 Concen: 30.000 ug/l  
 RT: 9.107 min Scan# 11  
 Delta R.T. 0.000 min  
 Lab File: VN077019.D  
 Acq: 16 Mar 2023 14:07

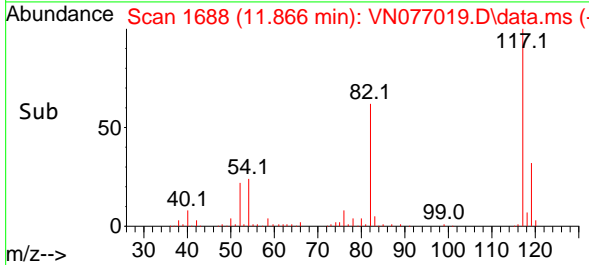
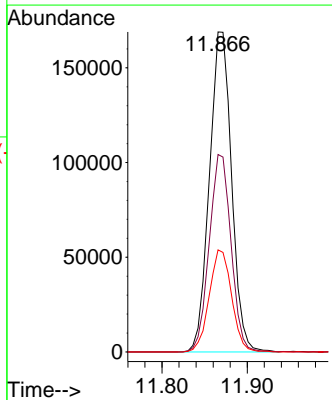
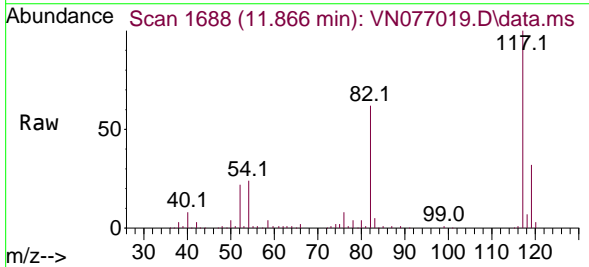
Instrument : MSVOA\_N  
 ClientSampleId : 230315024-01-TRIP-BLANK

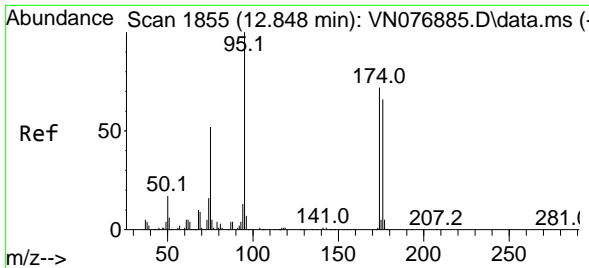
Tgt Ion	Resp	Lower	Upper
114	294482		
63	22.5	17.0	25.4
88	16.1	11.6	17.4



#57  
 Chlorobenzene-d5  
 Concen: 30.000 ug/l  
 RT: 11.866 min Scan# 1688  
 Delta R.T. 0.000 min  
 Lab File: VN077019.D  
 Acq: 16 Mar 2023 14:07

Tgt Ion	Resp	Lower	Upper
117	305410		
82	60.8	45.4	68.0
119	32.2	26.8	40.2



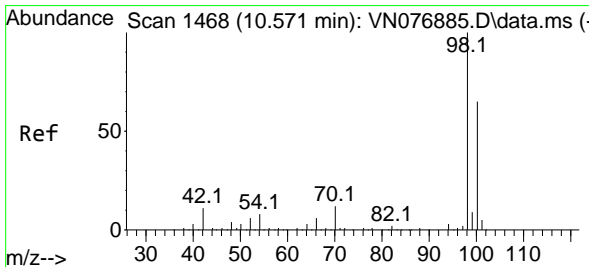
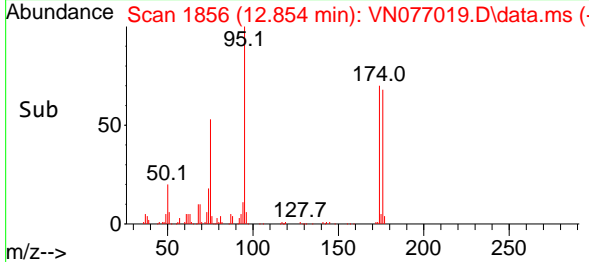
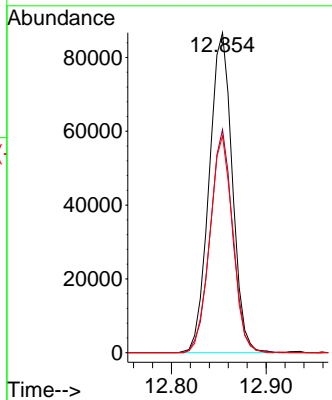
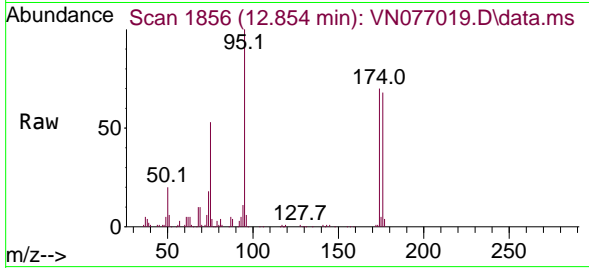


#60  
 4-Bromofluorobenzene  
 Concen: 25.499 ug/l  
 RT: 12.854 min Scan# 11  
 Delta R.T. 0.006 min  
 Lab File: VN077019.D  
 Acq: 16 Mar 2023 14:07

Instrument : MSVOA\_N  
 ClientSampleId : 230315024-01-TRIP-BLANK

Tgt Ion: 95 Resp: 147393

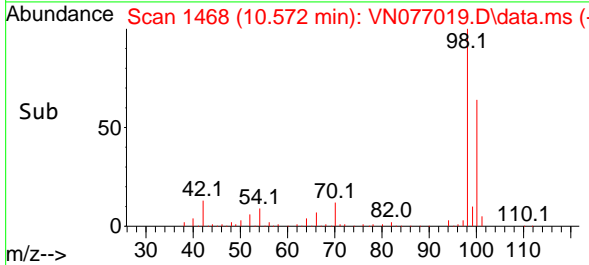
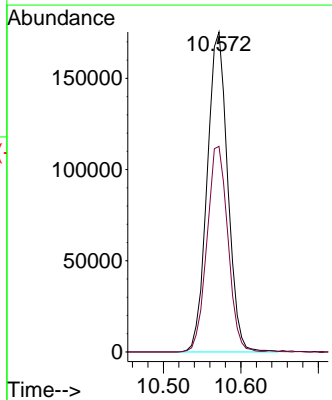
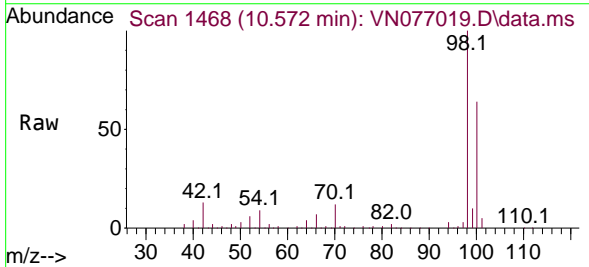
Ion	Ratio	Lower	Upper
95	100		
174	67.9	64.2	96.4
176	66.9	61.4	92.0

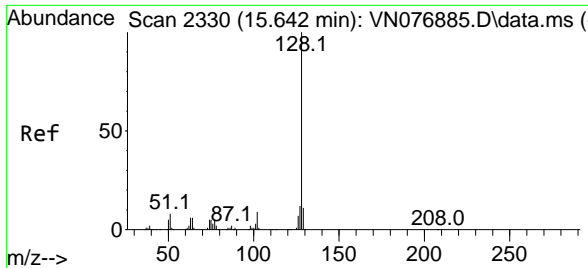


#63  
 Toluene-d8  
 Concen: 30.090 ug/l  
 RT: 10.572 min Scan# 1468  
 Delta R.T. -0.000 min  
 Lab File: VN077019.D  
 Acq: 16 Mar 2023 14:07

Tgt Ion: 98 Resp: 323232

Ion	Ratio	Lower	Upper
98	100		
100	65.4	53.8	80.6





#91  
 Naphthalene  
 Concen: 0.230 ug/l  
 RT: 15.642 min Scan# 21  
 Delta R.T. -0.000 min  
 Lab File: VN077019.D  
 Acq: 16 Mar 2023 14:07

Instrument : MSVOA\_N  
 ClientSampleId : 230315024-01-TRIP-BLANK

Tgt Ion:128 Resp: 3556

Ion	Ratio	Lower	Upper
128	100		
127	5.8	11.0	16.6#
129	5.6	8.9	13.3#

