

Data Path : Z:\voasrv\HPCHEM1\MSVOA_N\Data\VN031723\
 Data File : VN077041.D
 Acq On : 17 Mar 2023 18:34
 Operator : JC\MD
 Sample : 01941-09 20X
 Misc : 5.0mL/MSVOA_N/WATER
 ALS Vial : 19 Sample Multiplier: 1

Instrument :
 MSVOA_N
 ClientSampleId :
 TT101D2-20230314

Quant Time: Mar 18 02:33:05 2023
 Quant Method : Z:\voasrv\HPCHEM1\MSVOA_N\methods\82N031723W.M
 Quant Title : SW846 8260
 QLast Update : Sat Mar 18 02:17:37 2023
 Response via : Initial Calibration

Compound	R.T.	QIon	Response	Conc	Units	Dev(Min)

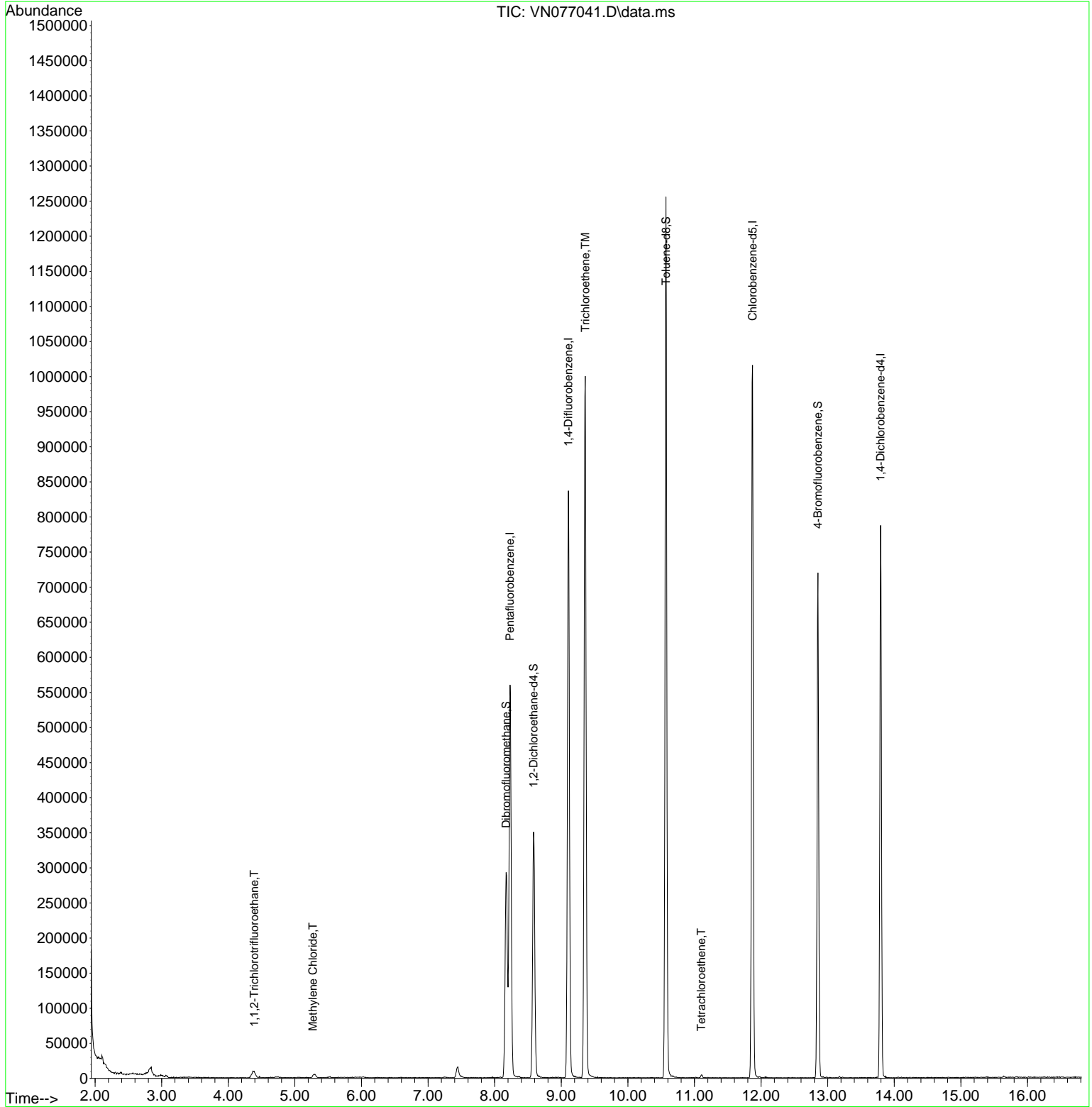
Internal Standards						
1) Pentafluorobenzene	8.231	168	386612	50.000	ug/l	0.00
34) 1,4-Difluorobenzene	9.107	114	683310	50.000	ug/l	0.00
63) Chlorobenzene-d5	11.872	117	580794	50.000	ug/l	0.00
72) 1,4-Dichlorobenzene-d4	13.795	152	202991	50.000	ug/l	0.00
System Monitoring Compounds						
33) 1,2-Dichloroethane-d4	8.584	65	294965	47.764	ug/l	0.00
Spiked Amount	50.000	Range	74 - 125	Recovery	=	95.520%
35) Dibromofluoromethane	8.172	113	220199	46.016	ug/l	0.00
Spiked Amount	50.000	Range	75 - 124	Recovery	=	92.040%
50) Toluene-d8	10.572	98	837093	48.971	ug/l	0.00
Spiked Amount	50.000	Range	86 - 113	Recovery	=	97.940%
62) 4-Bromofluorobenzene	12.854	95	251837	41.693	ug/l	0.00
Spiked Amount	50.000	Range	83 - 123	Recovery	=	83.380%
Target Compounds						
					Qvalue	
9) 1,1,2-Trichlorotrifluo...	4.390	101	6416	1.250	ug/l #	88
20) Methylene Chloride	5.272	84	4286	0.718	ug/l #	62
44) Trichloroethene	9.360	130	355577	68.293	ug/l	99
64) Tetrachloroethene	11.101	164	1053	0.270	ug/l #	60

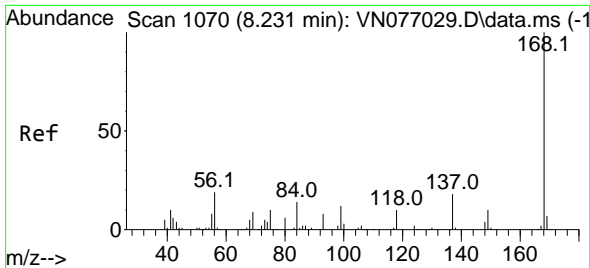
(#) = qualifier out of range (m) = manual integration (+) = signals summed

Data Path : Z:\voasrv\HPCHEM1\MSVOA_N\Data\VN031723\
 Data File : VN077041.D
 Acq On : 17 Mar 2023 18:34
 Operator : JC\MD
 Sample : 01941-09 20X
 Misc : 5.0mL/MSVOA_N/WATER
 ALS Vial : 19 Sample Multiplier: 1

Instrument :
 MSVOA_N
 ClientSampleId :
 TT101D2-20230314

Quant Time: Mar 18 02:33:05 2023
 Quant Method : Z:\voasrv\HPCHEM1\MSVOA_N\methods\82N031723W.M
 Quant Title : SW846 8260
 QLast Update : Sat Mar 18 02:17:37 2023
 Response via : Initial Calibration

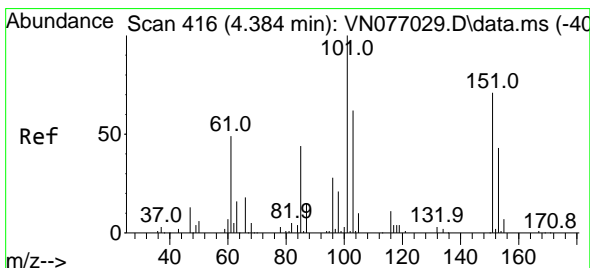
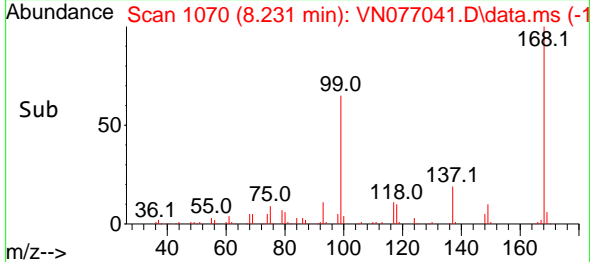
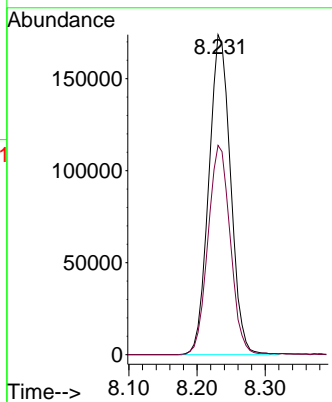
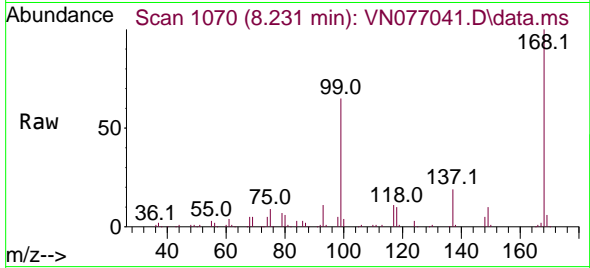




#1
 Pentafluorobenzene
 Concen: 50.000 ug/l
 RT: 8.231 min Scan# 1070
 Delta R.T. -0.000 min
 Lab File: VN077041.D
 Acq: 17 Mar 2023 18:34

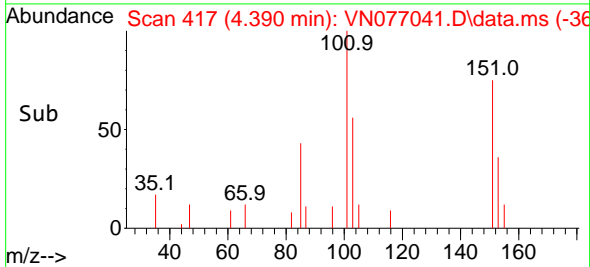
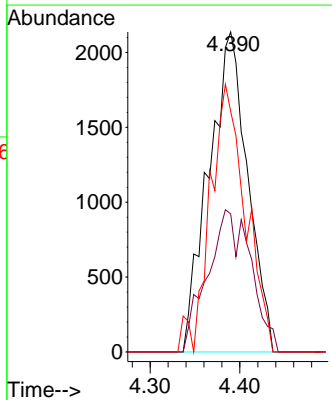
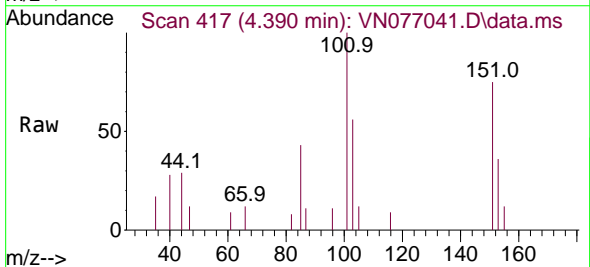
Instrument : MSVOA_N
 ClientSampleId : TT101D2-20230314

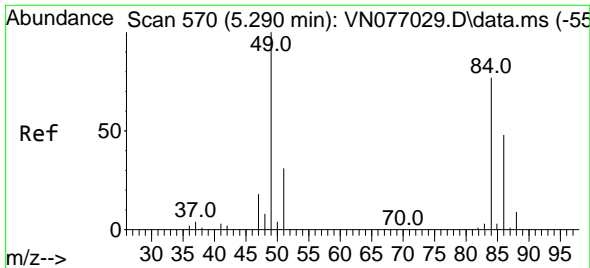
Tgt Ion:168 Resp: 386612
 Ion Ratio Lower Upper
 168 100
 99 65.4 53.9 80.9



#9
 1,1,2-Trichlorotrifluoroethane
 Concen: 1.250 ug/l
 RT: 4.390 min Scan# 417
 Delta R.T. 0.006 min
 Lab File: VN077041.D
 Acq: 17 Mar 2023 18:34

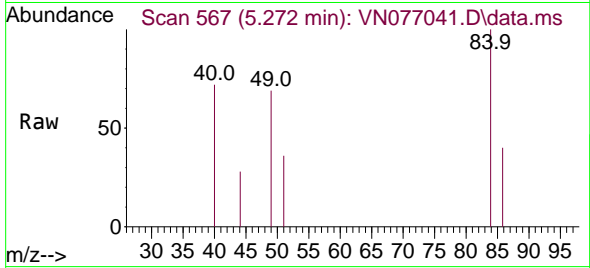
Tgt Ion:101 Resp: 6416
 Ion Ratio Lower Upper
 101 100
 85 32.2 36.6 55.0#
 151 76.6 56.9 85.3



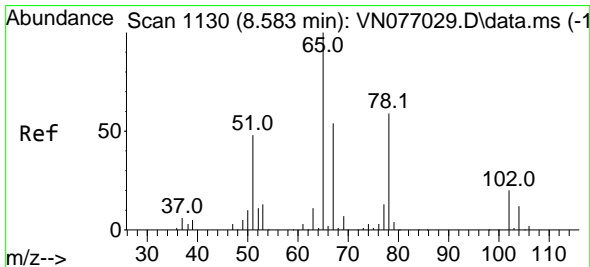
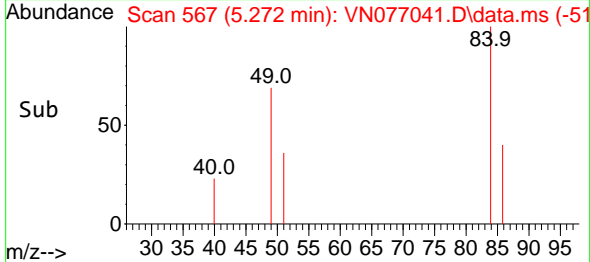
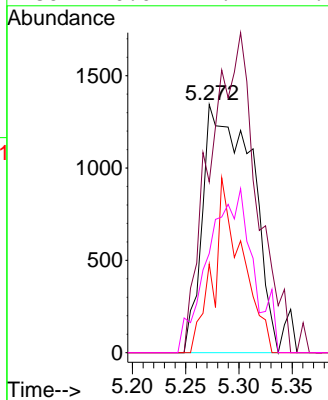


#20
Methylene Chloride
Concen: 0.718 ug/l
RT: 5.272 min Scan# 50
Delta R.T. -0.018 min
Lab File: VN077041.D
Acq: 17 Mar 2023 18:34

Instrument :
MSVOA_N
ClientSampleId :
TT101D2-20230314

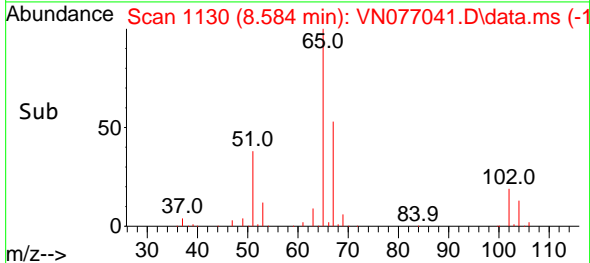
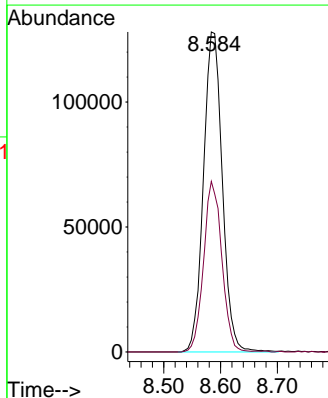
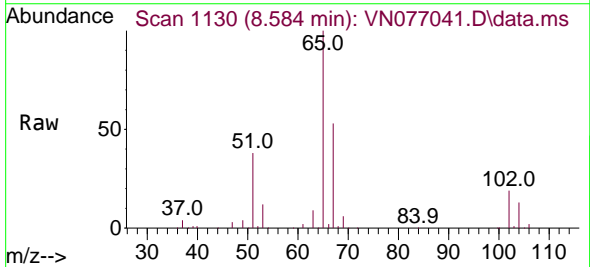


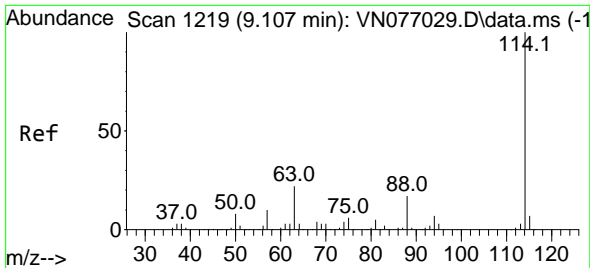
Tgt Ion: 84 Resp: 4286
Ion Ratio Lower Upper
84 100
49 68.8 103.8 155.6#
51 35.7 32.3 48.5
86 40.0 49.9 74.9#



#33
1,2-Dichloroethane-d4
Concen: 47.764 ug/l
RT: 8.584 min Scan# 1130
Delta R.T. 0.000 min
Lab File: VN077041.D
Acq: 17 Mar 2023 18:34

Tgt Ion: 65 Resp: 294965
Ion Ratio Lower Upper
65 100
67 51.5 0.0 105.2



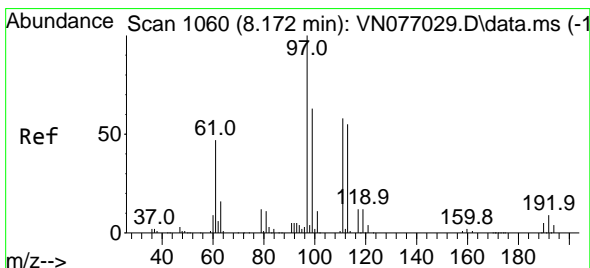
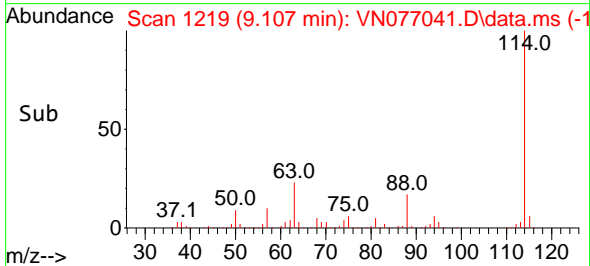
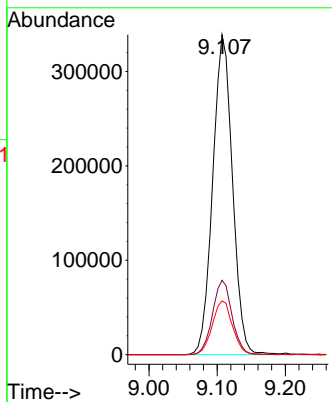
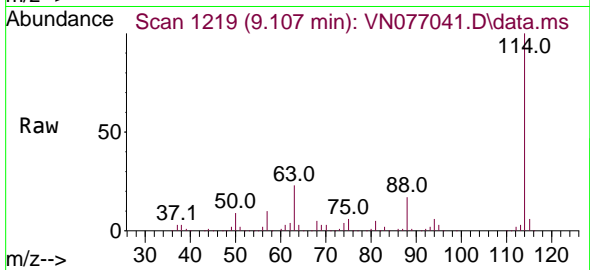


#34
 1,4-Difluorobenzene
 Concen: 50.000 ug/l
 RT: 9.107 min Scan# 11
 Delta R.T. 0.000 min
 Lab File: VN077041.D
 Acq: 17 Mar 2023 18:34

Instrument : MSVOA_N
 ClientSampleId : TT101D2-20230314

Tgt Ion:114 Resp: 683310

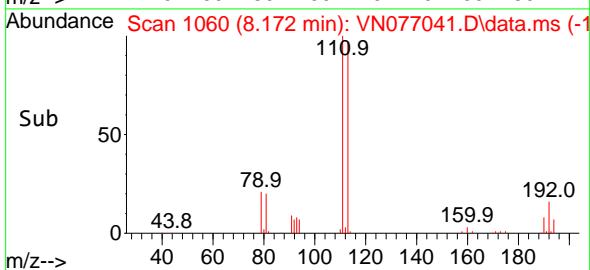
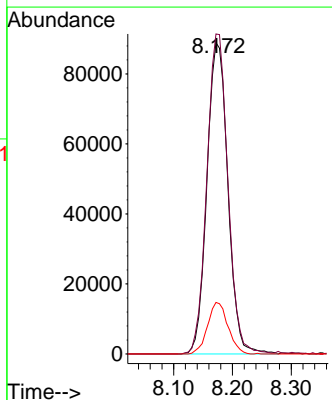
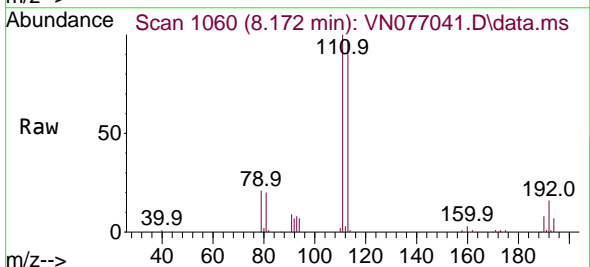
Ion	Ratio	Lower	Upper
114	100		
63	23.3	0.0	44.6
88	16.8	0.0	33.8

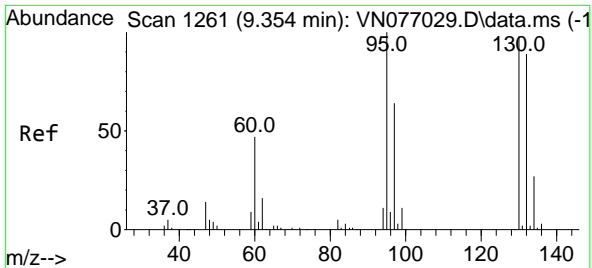


#35
 Dibromofluoromethane
 Concen: 46.016 ug/l
 RT: 8.172 min Scan# 1060
 Delta R.T. 0.000 min
 Lab File: VN077041.D
 Acq: 17 Mar 2023 18:34

Tgt Ion:113 Resp: 220199

Ion	Ratio	Lower	Upper
113	100		
111	103.3	82.2	123.2
192	16.1	13.0	19.6

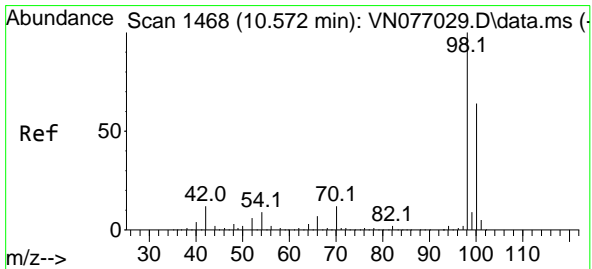
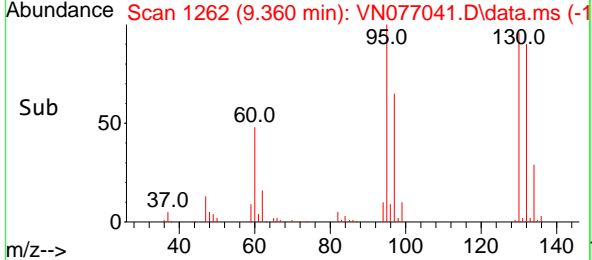
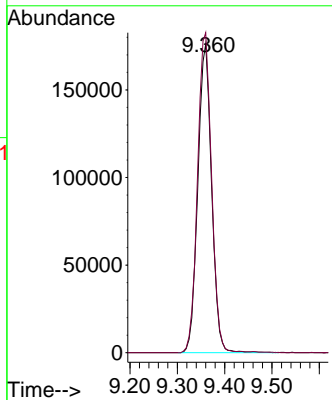
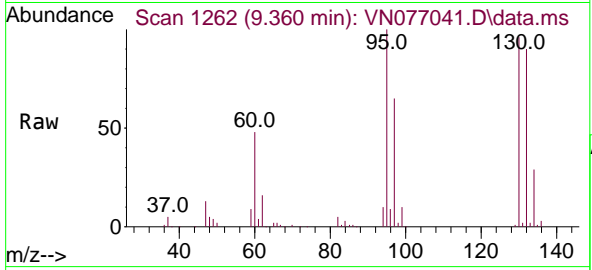




#44
 Trichloroethene
 Concen: 68.293 ug/l
 RT: 9.360 min Scan# 11
 Delta R.T. 0.006 min
 Lab File: VN077041.D
 Acq: 17 Mar 2023 18:34

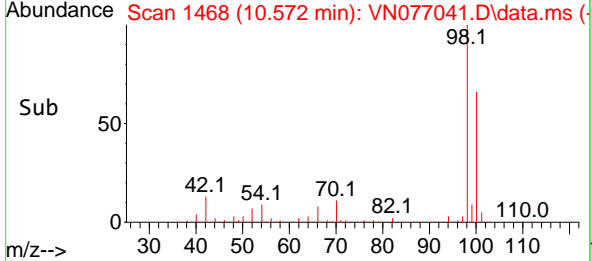
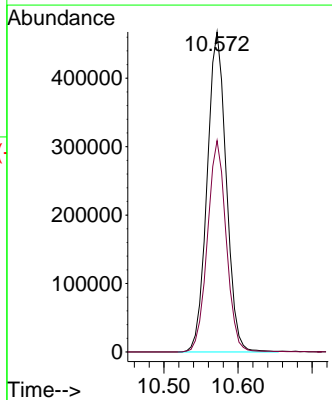
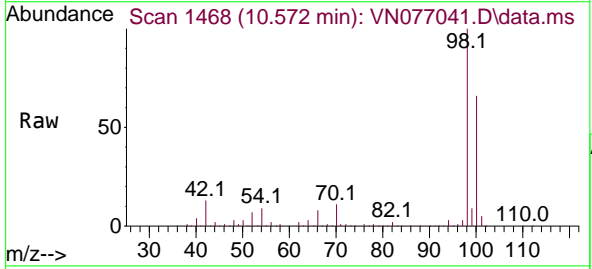
Instrument : MSVOA_N
 ClientSampleId : TT101D2-20230314

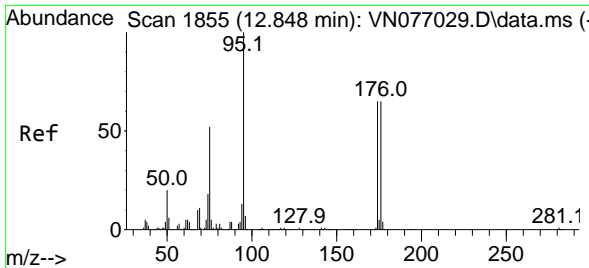
Tgt Ion:130 Resp: 355577
 Ion Ratio Lower Upper
 130 100
 95 103.6 0.0 204.4



#50
 Toluene-d8
 Concen: 48.971 ug/l
 RT: 10.572 min Scan# 1468
 Delta R.T. 0.000 min
 Lab File: VN077041.D
 Acq: 17 Mar 2023 18:34

Tgt Ion: 98 Resp: 837093
 Ion Ratio Lower Upper
 98 100
 100 65.0 51.6 77.4

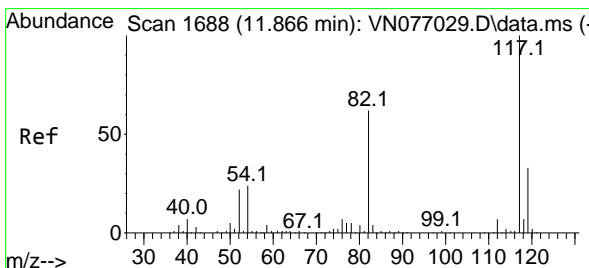
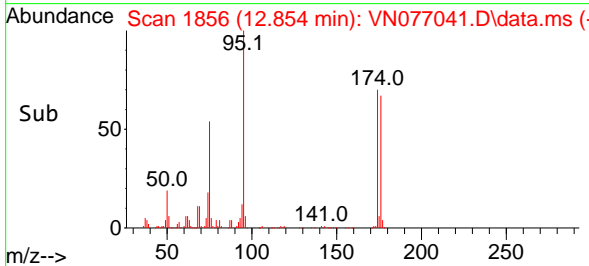
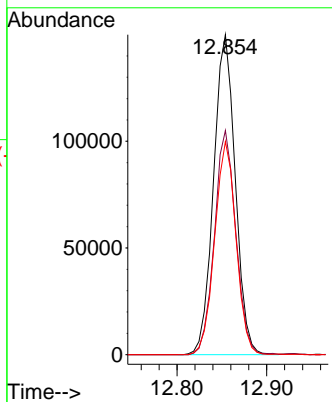
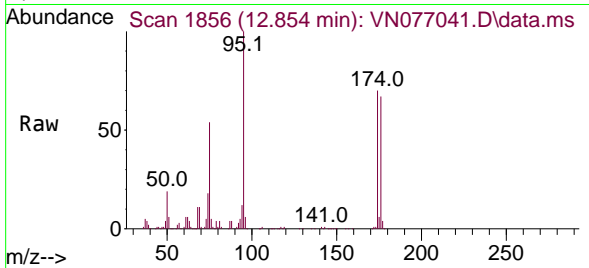




#62
 4-Bromofluorobenzene
 Concen: 41.693 ug/l
 RT: 12.854 min Scan# 1856
 Delta R.T. 0.006 min
 Lab File: VN077041.D
 Acq: 17 Mar 2023 18:34

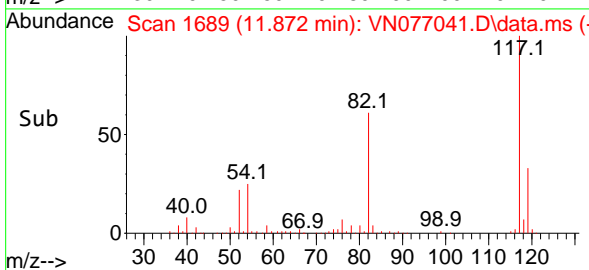
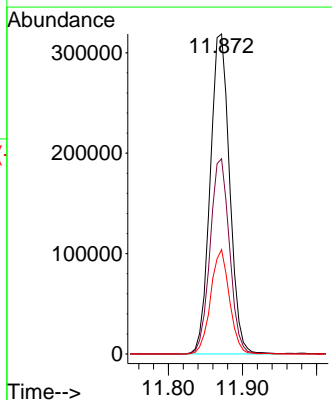
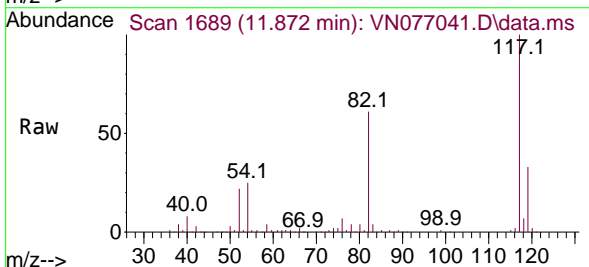
Instrument : MSVOA_N
 ClientSampleId : TT101D2-20230314

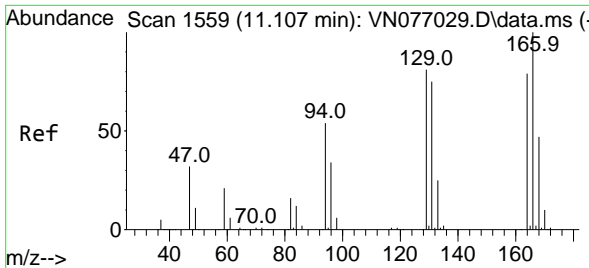
Tgt Ion: 95 Resp: 251837
 Ion Ratio Lower Upper
 95 100
 174 69.1 0.0 136.6
 176 65.4 0.0 130.0



#63
 Chlorobenzene-d5
 Concen: 50.000 ug/l
 RT: 11.872 min Scan# 1689
 Delta R.T. 0.006 min
 Lab File: VN077041.D
 Acq: 17 Mar 2023 18:34

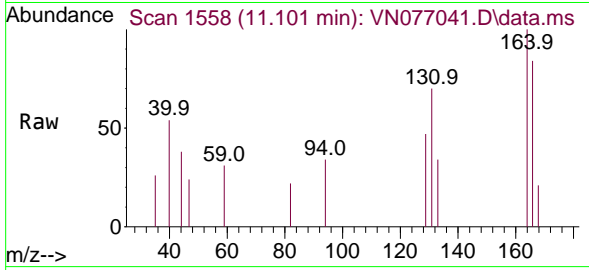
Tgt Ion: 117 Resp: 580794
 Ion Ratio Lower Upper
 117 100
 82 61.0 49.4 74.0
 119 32.6 26.5 39.7





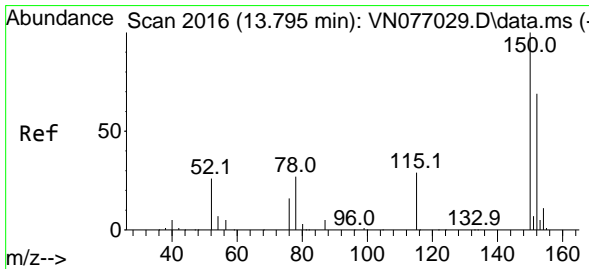
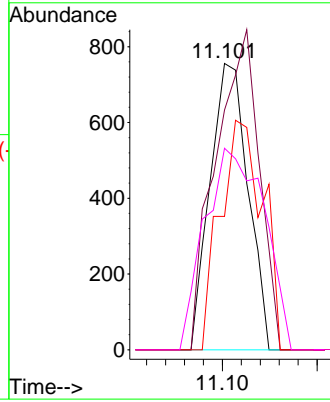
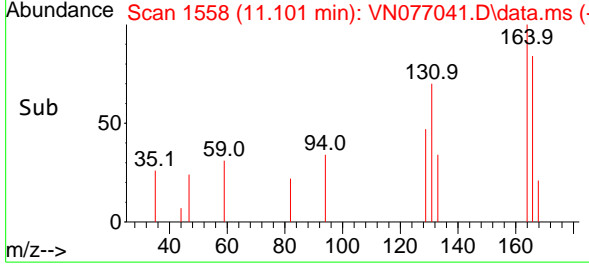
#64
 Tetrachloroethene
 Concen: 0.270 ug/l
 RT: 11.101 min Scan# 11
 Delta R.T. -0.006 min
 Lab File: VN077041.D
 Acq: 17 Mar 2023 18:34

Instrument : MSVOA_N
 ClientSampleId : TT101D2-20230314

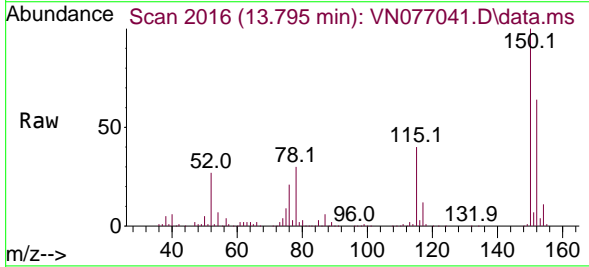


Tgt Ion:164 Resp: 1053

Ion	Ratio	Lower	Upper
164	100		
166	83.7	101.9	152.9#
129	46.6	82.6	123.8#
131	70.4	76.8	115.2#



#72
 1,4-Dichlorobenzene-d4
 Concen: 50.000 ug/l
 RT: 13.795 min Scan# 2016
 Delta R.T. 0.000 min
 Lab File: VN077041.D
 Acq: 17 Mar 2023 18:34



Tgt Ion:152 Resp: 202991

Ion	Ratio	Lower	Upper
152	100		
115	64.5	31.9	95.7
150	156.2	0.0	348.0

