

Data Path : Z:\VOASRV\HPCHEM1\MSVOA N\DATA\VN031819\
 Data File : VN054407.D
 Acq On : 18 Mar 2019 22:11
 Operator : JC/SP
 Sample : VN0318WBL02
 Misc : 5.00mL/MSVOA N/WATER
 ALS Vial : 31 Sample Multiplier: 1

Instrument :
 MSVOA_N
 ClientSampleId :

Quant Time: Mar 19 05:16:18 2019
 Quant Method : Z:\VOASRV\HPCHEM1\MSVOA_N\METHODS\82N031219W.M
 Quant Title : SW846 8260
 QLast Update : Wed Mar 13 03:33:31 2019
 Response via : Initial Calibration

Internal Standards	R.T.	QIon	Response	Conc	Units	Dev(Min)
1) Pentafluorobenzene	7.67	168	1797930	50.00	ug/l	0.00
34) 1,4-Difluorobenzene	8.59	114	2589226	50.00	ug/l	0.00
63) Chlorobenzene-d5	11.41	117	2146882	50.00	ug/l	0.00
72) 1,4-Dichlorobenzene-d4	13.34	152	781993	50.00	ug/l	0.00

System Monitoring Compounds

33) 1,2-Dichloroethane-d4	8.03	65	867809	45.45	ug/l	0.00
Spiked Amount				50.000		
Recovery				=		90.90%
35) Dibromofluoromethane	7.59	113	785556	47.04	ug/l	0.00
Spiked Amount				50.000		
Recovery				=		94.08%
50) Toluene-d8	10.09	98	2983700	48.38	ug/l	0.00
Spiked Amount				50.000		
Recovery				=		96.76%
62) 4-Bromofluorobenzene	12.40	95	876236	40.60	ug/l	0.00
Spiked Amount				50.000		
Recovery				=		81.20%

Target Compounds

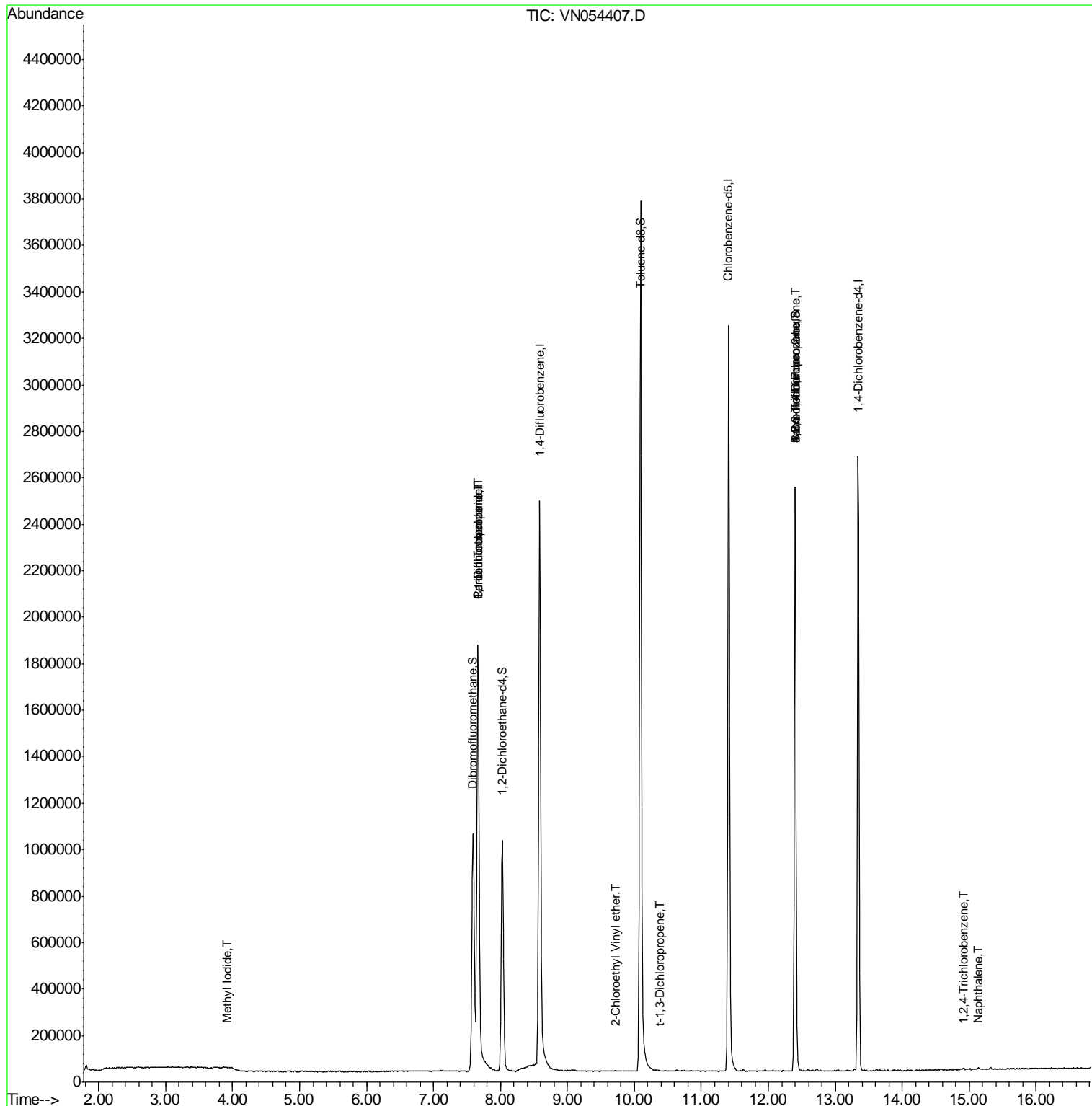
					Qvalue	
10) Methyl Iodide	3.93	142	421	1.512	ug/l #	76
31) Cyclohexane	7.67	56	27221	Below	Cal #	1
36) 1,1-Dichloropropene	7.66	75	105687	4.432	ug/l #	48
38) Carbon Tetrachloride	7.66	117	145072	5.802	ug/l #	16
53) t-1,3-Dichloropropene	10.38	75	404	2.001	ug/l #	1
58) 2-Chloroethyl Vinyl ether	9.72	63	29	16.831	ug/l #	44
71) Bromoform	12.40	173	5883	2.780	ug/l #	1
76) 1,2,3-Trichloropropane	12.40	75	419944	36.518	ug/l #	100
81) trans-1,4-Dichloro-2-buten	12.40	75	419944	124.836	ug/l #	11
93) 1,2,4-Trichlorobenzene	14.91	180	2297	2.649	ug/l	85
95) Naphthalene	15.13	128	7281	3.667	ug/l	100

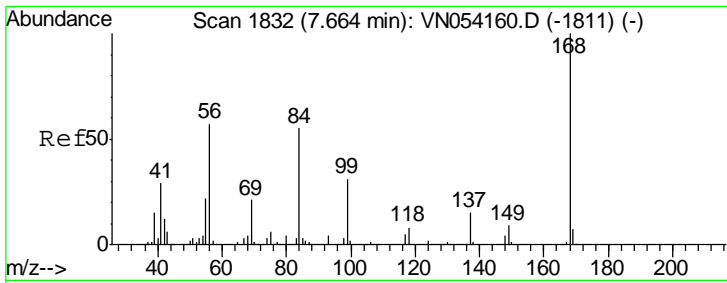
(#) = qualifier out of range (m) = manual integration (+) = signals summed

Data Path : Z:\VOASRV\HPCHEM1\MSVOA N\DATA\VN031819\
 Data File : VN054407.D
 Acq On : 18 Mar 2019 22:11
 Operator : JC/SP
 Sample : VN0318WBL02
 Misc : 5.00mL/MSVOA N/WATER
 ALS Vial : 31 Sample Multiplier: 1

Instrument :
 MSVOA_N
 ClientSampled :

Quant Time: Mar 19 05:16:18 2019
 Quant Method : Z:\VOASRV\HPCHEM1\MSVOA_N\METHODS\82N031219W.M
 Quant Title : SW846 8260
 QLast Update : Wed Mar 13 03:33:31 2019
 Response via : Initial Calibration

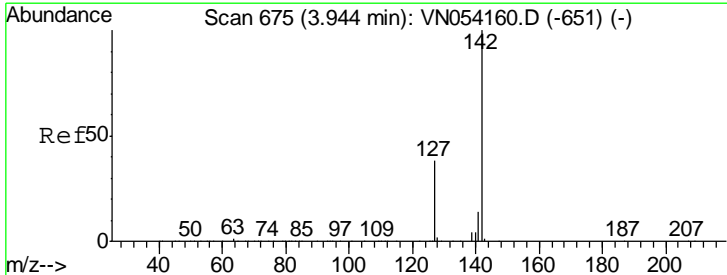
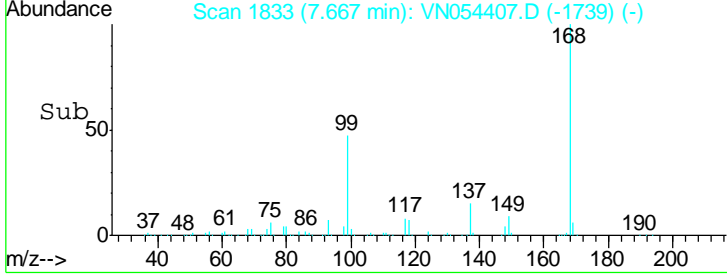
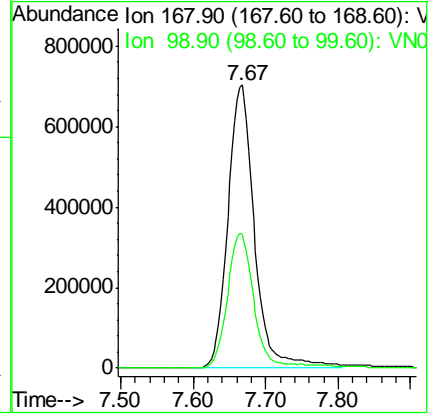
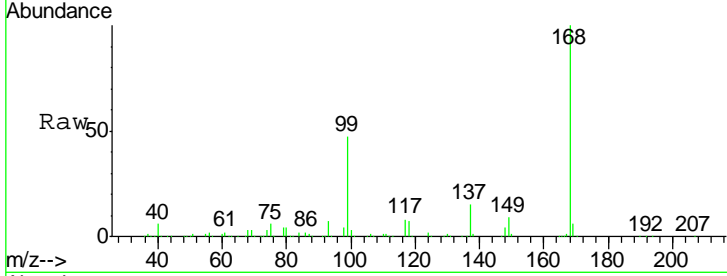




#1
 Pentafluorobenzene
 Concen: 50.000 ug/l
 RT: 7.67 min Scan# 1833
 Delta R.T. 0.00 min
 Lab File: VN054407.D
 Acq: 18 Mar 2019 22:11

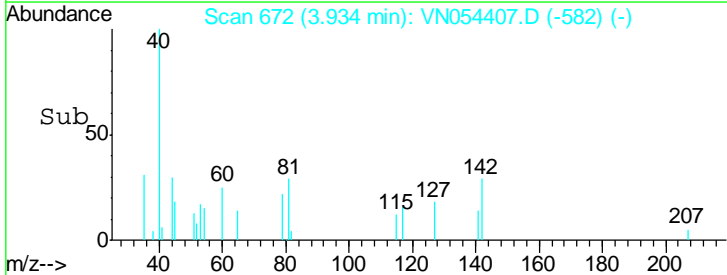
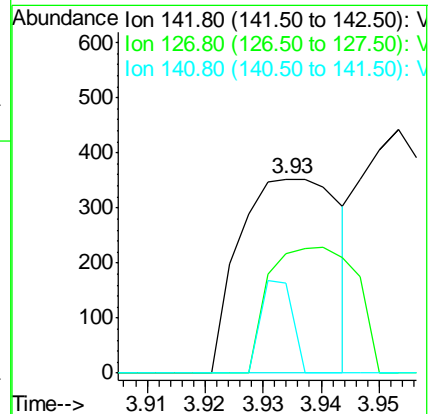
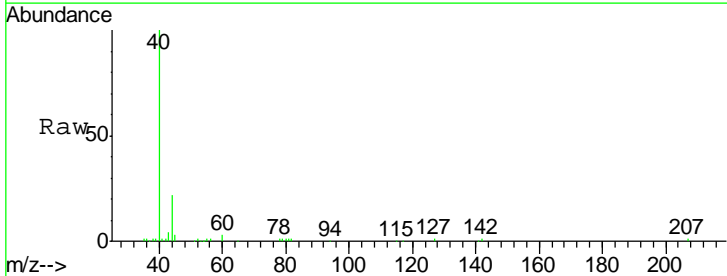
Instrument :
 MSVOA_N
 ClientSampled :

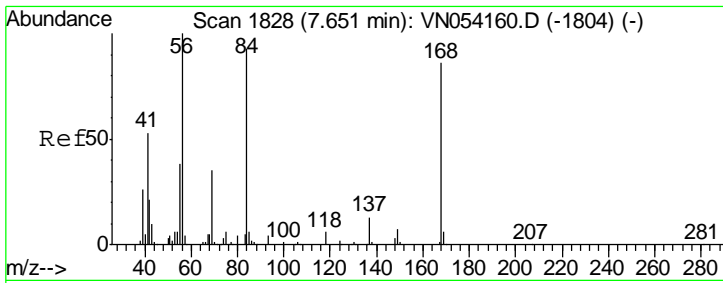
Tgt Ion	Resp	Lower	Upper
168	100		
99	47.2	37.1	55.7



#10
 Methyl Iodide
 Concen: 1.512 ug/l
 RT: 3.93 min Scan# 672
 Delta R.T. -0.01 min
 Lab File: VN054407.D
 Acq: 18 Mar 2019 22:11

Tgt Ion	Resp	Lower	Upper
142	100		
127	56.8	30.3	45.5#
141	15.2	11.2	16.8

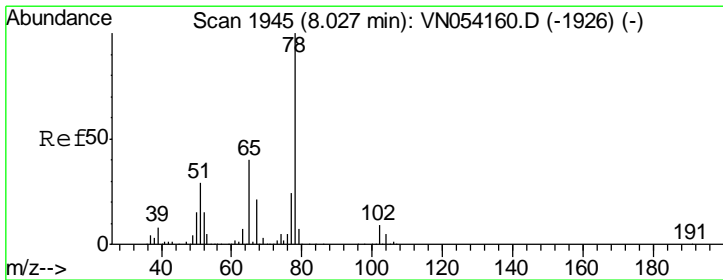
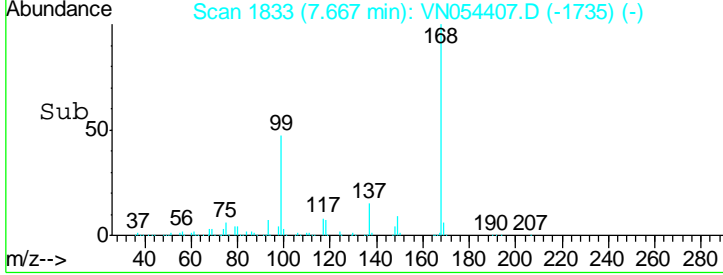
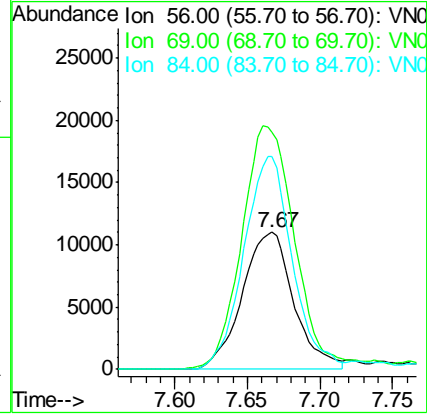
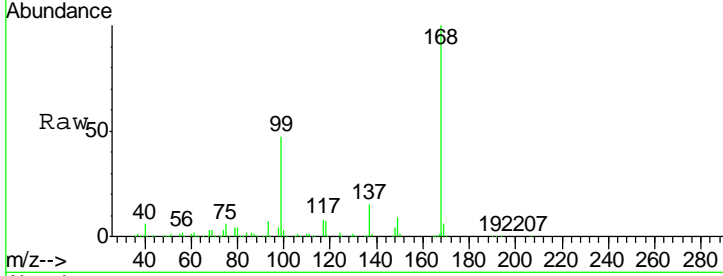




#31
 Cyclohexane
 Concen: Below Cal
 RT: 7.67 min Scan# 1833
 Delta R.T. 0.02 min
 Lab File: VN054407.D
 Acq: 18 Mar 2019 22:11

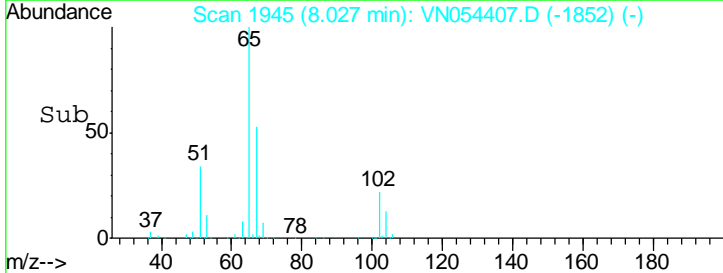
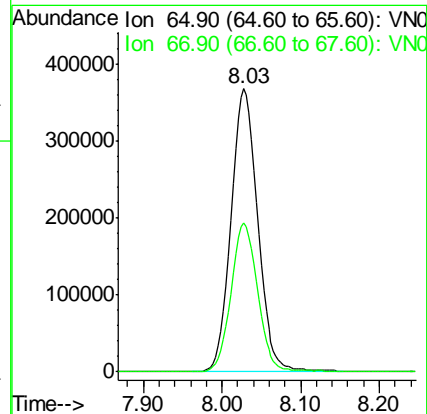
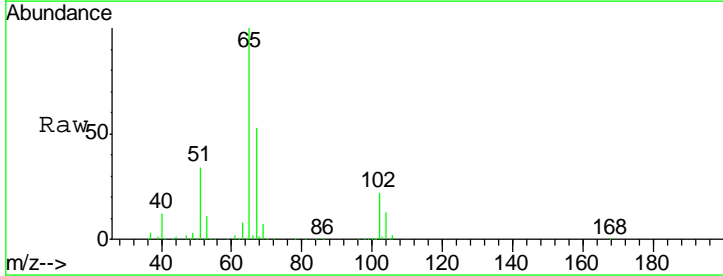
Instrument :
 MSVOA_N
 ClientSampled :

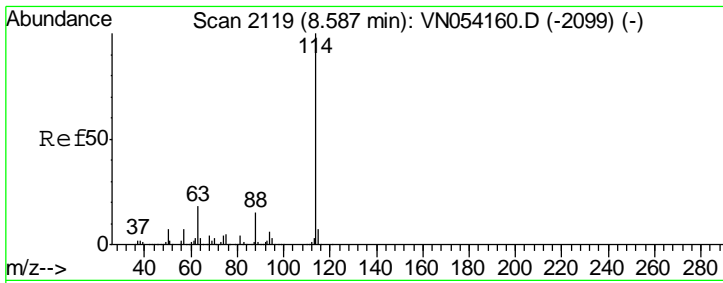
Tgt Ion	Resp	Lower	Upper
56	100		
69	171.8	27.8	41.6#
84	155.6	74.6	111.8#



#33
 1,2-Dichloroethane-d4
 Concen: 45.449 ug/l
 RT: 8.03 min Scan# 1945
 Delta R.T. -0.00 min
 Lab File: VN054407.D
 Acq: 18 Mar 2019 22:11

Tgt Ion	Resp	Lower	Upper
65	100		
67	52.3	0.0	104.6

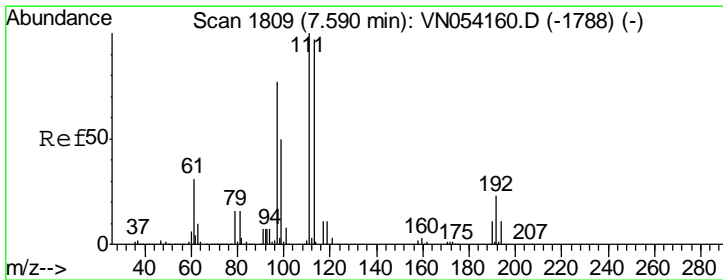
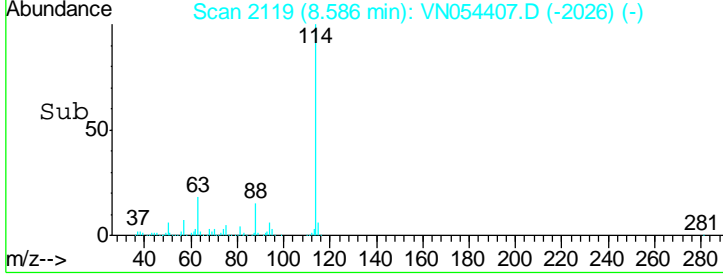
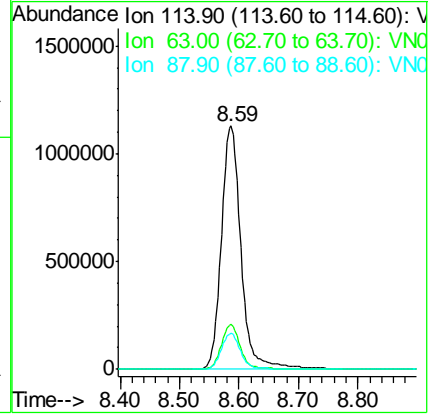
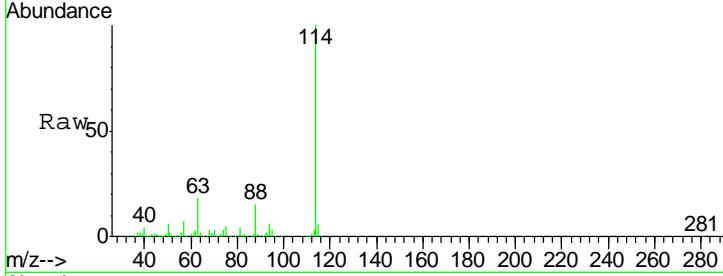




#34
 1,4-Difluorobenzene
 Concen: 50.000 ug/l
 RT: 8.59 min Scan# 2119
 Delta R.T. -0.00 min
 Lab File: VN054407.D
 Acq: 18 Mar 2019 22:11

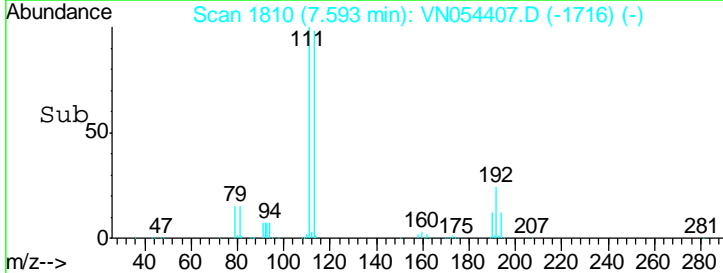
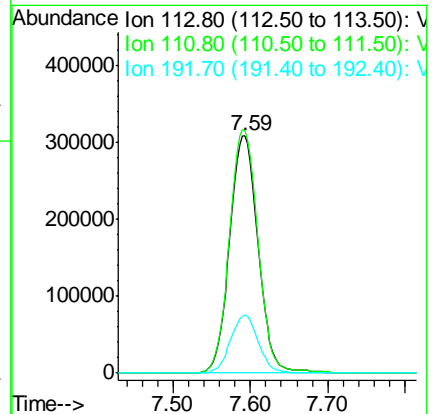
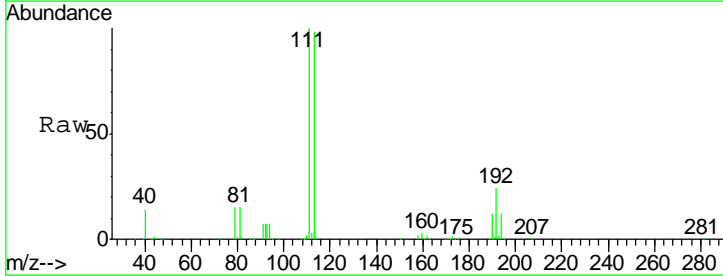
Instrument :
 MSVOA_N
 ClientSampled :

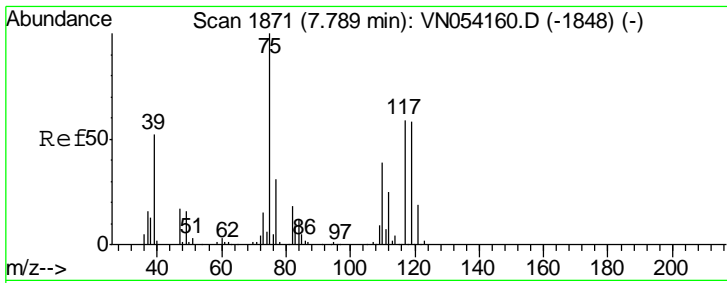
Tgt Ion	Resp	Lower	Upper
114	100		
63	18.3	0.0	35.2
88	14.8	0.0	30.2



#35
 Dibromofluoromethane
 Concen: 47.041 ug/l
 RT: 7.59 min Scan# 1810
 Delta R.T. 0.00 min
 Lab File: VN054407.D
 Acq: 18 Mar 2019 22:11

Tgt Ion	Resp	Lower	Upper
113	100		
111	103.1	82.2	123.4
192	23.9	19.2	28.8

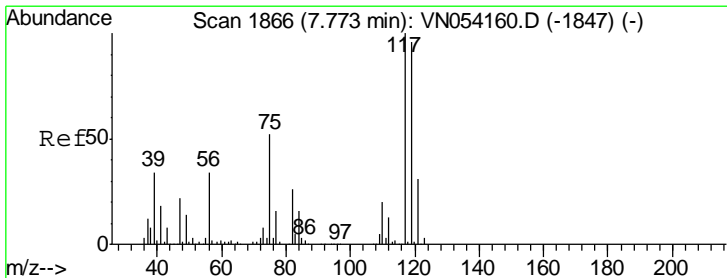
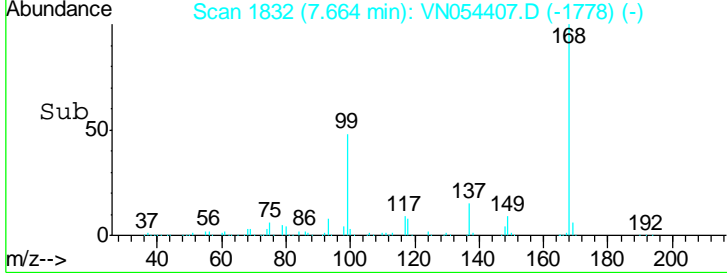
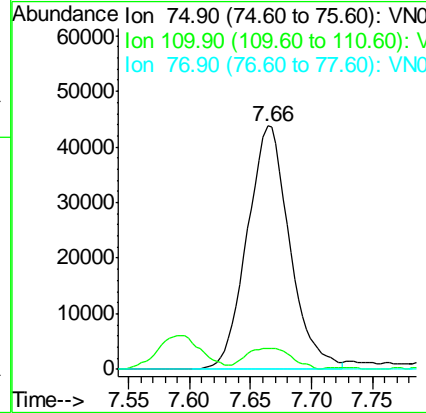
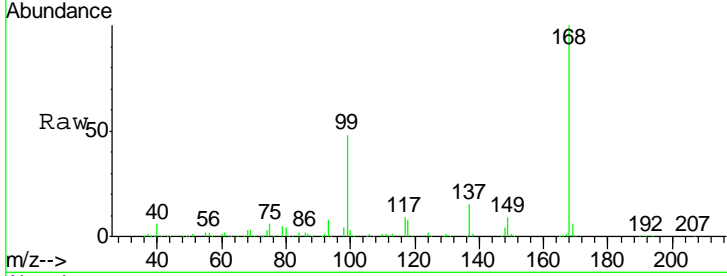




#36
 1,1-Dichloropropene
 Concen: 4.432 ug/l
 RT: 7.66 min Scan# 1832
 Delta R.T. -0.13 min
 Lab File: VN054407.D
 Acq: 18 Mar 2019 22:11

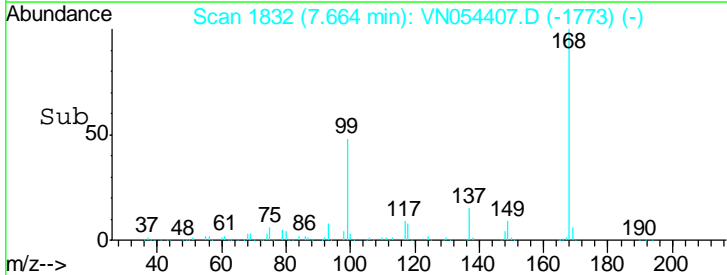
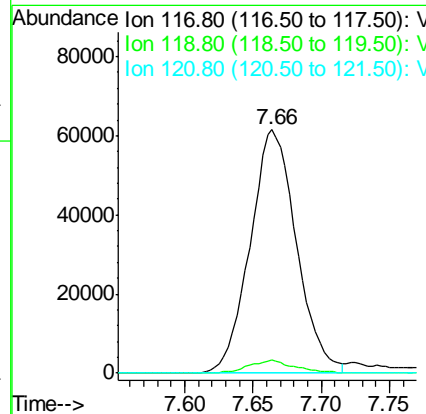
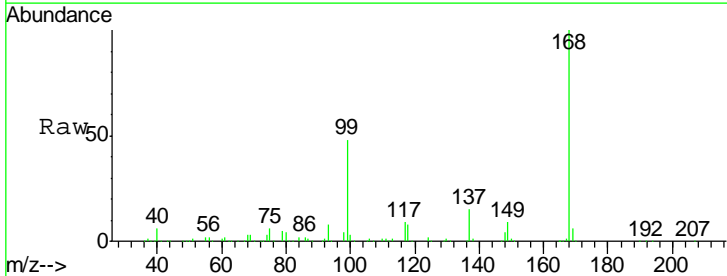
Instrument :
 MSVOA_N
 ClientSampled :

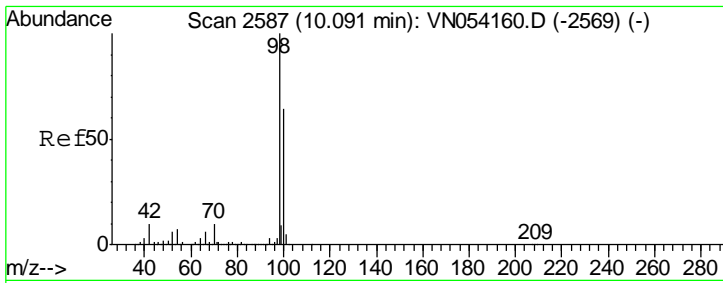
Tgt Ion	Resp	Lower	Upper
75	105687		
110	9.5	19.1	57.5#
77	0.0	25.0	37.4#



#38
 Carbon Tetrachloride
 Concen: 5.802 ug/l
 RT: 7.66 min Scan# 1832
 Delta R.T. -0.11 min
 Lab File: VN054407.D
 Acq: 18 Mar 2019 22:11

Tgt Ion	Resp	Lower	Upper
117	145072		
119	5.3	76.3	114.5#
121	0.0	24.6	36.8#

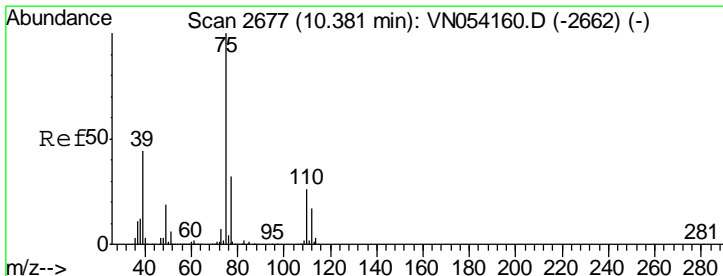
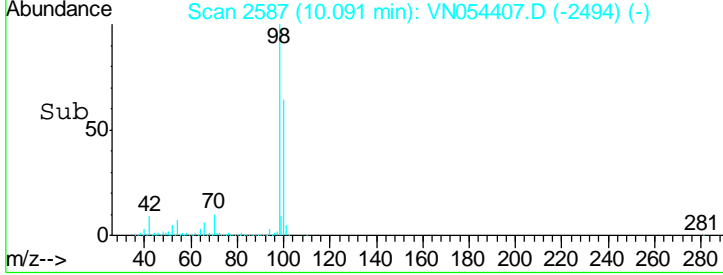
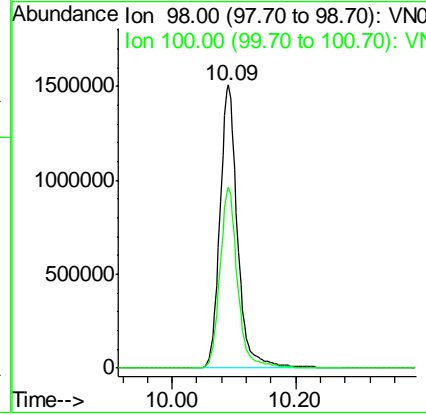
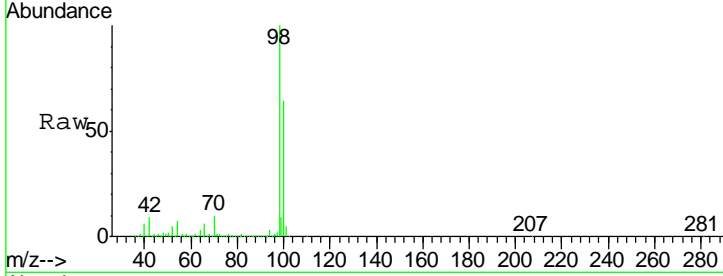




#50
 Toluene-d8
 Concen: 48.379 ug/l
 RT: 10.09 min Scan# 2587
 Delta R.T. -0.00 min
 Lab File: VN054407.D
 Acq: 18 Mar 2019 22:11

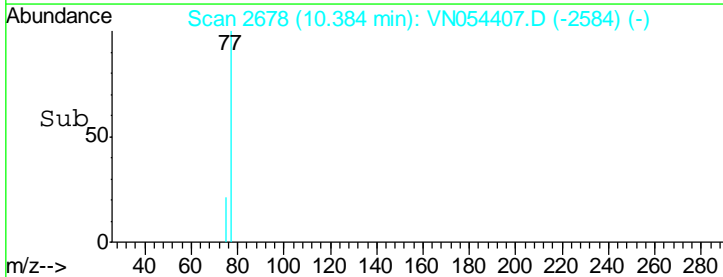
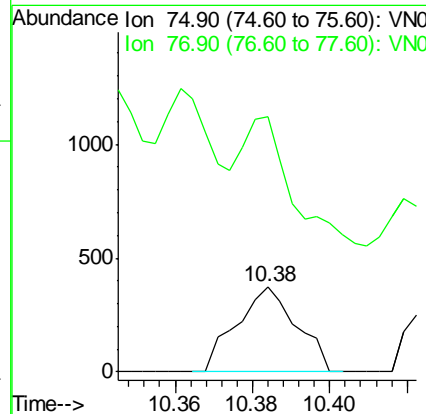
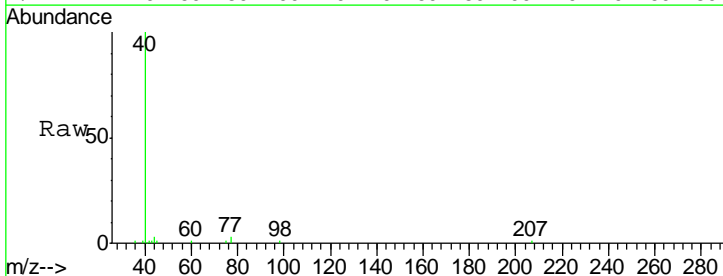
Instrument :
 MSVOA_N
 ClientSampled :

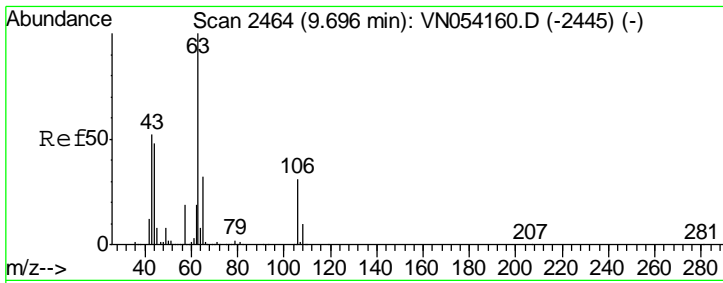
Tgt Ion	Resp	Lower	Upper
98	100		
100	64.2	51.2	76.8



#53
 t-1,3-Dichloropropene
 Concen: 2.001 ug/l
 RT: 10.38 min Scan# 2678
 Delta R.T. 0.00 min
 Lab File: VN054407.D
 Acq: 18 Mar 2019 22:11

Tgt Ion	Resp	Lower	Upper
75	100		
77	138.0	25.8	38.8#

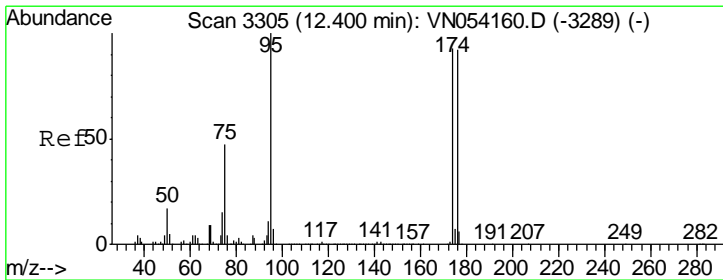
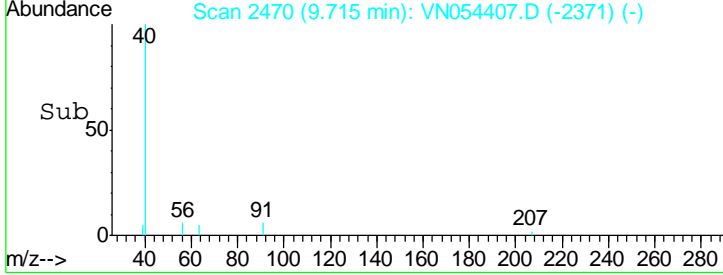
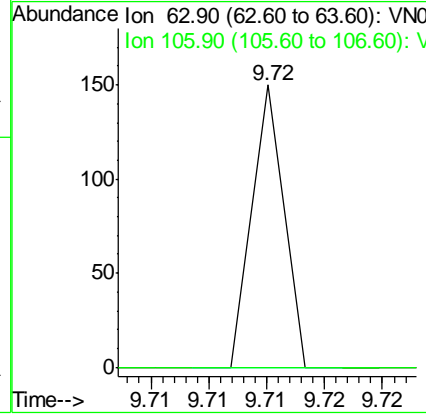
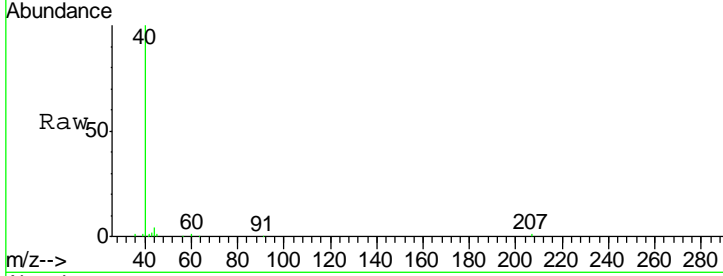




#58
 2-Chloroethyl Vinyl ether
 Concen: 16.831 ug/l
 RT: 9.72 min Scan# 2470
 Delta R.T. 0.02 min
 Lab File: VN054407.D
 Acq: 18 Mar 2019 22:11

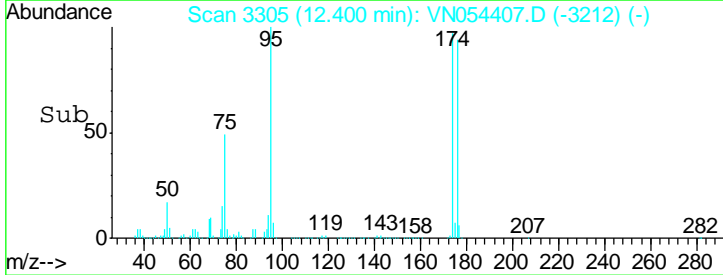
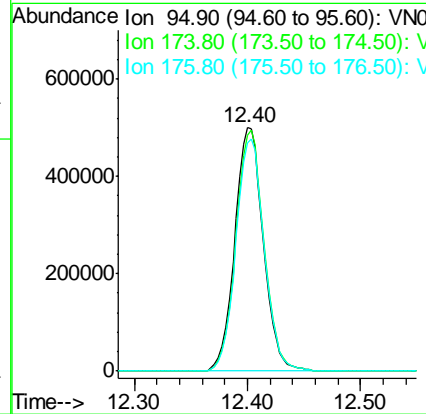
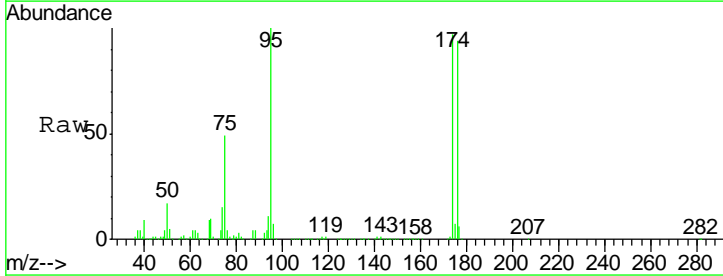
Instrument :
 MSVOA_N
 ClientSampled :

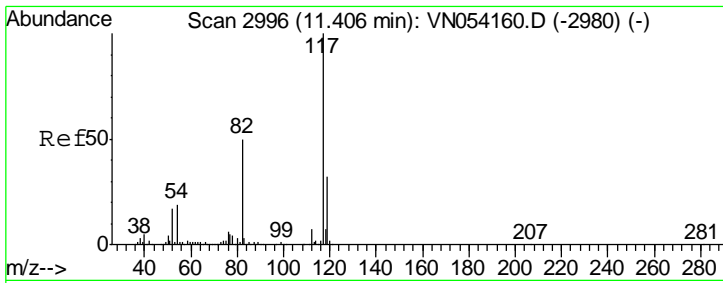
Tgt Ion	Resp	Lower	Upper
63	100		
106	0.0	24.4	36.6#



#62
 4-Bromofluorobenzene
 Concen: 40.605 ug/l
 RT: 12.40 min Scan# 3305
 Delta R.T. -0.00 min
 Lab File: VN054407.D
 Acq: 18 Mar 2019 22:11

Tgt Ion	Resp	Lower	Upper
95	100		
174	97.5	0.0	191.0
176	95.0	0.0	187.4

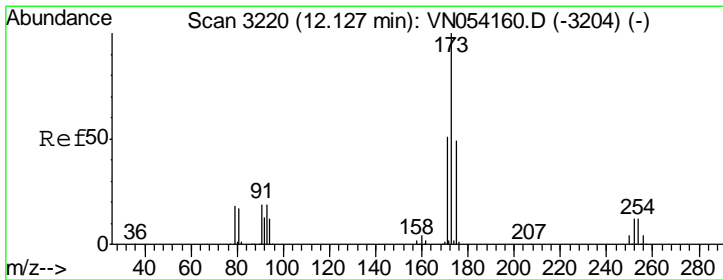
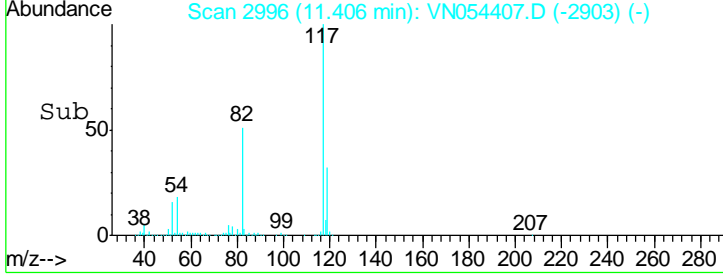
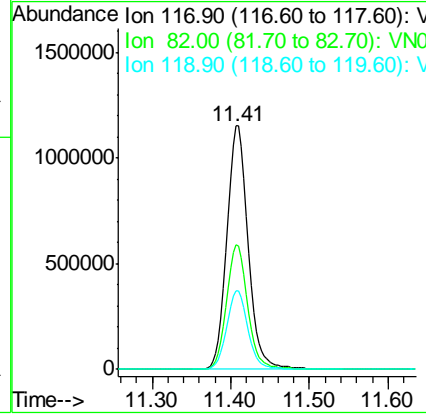
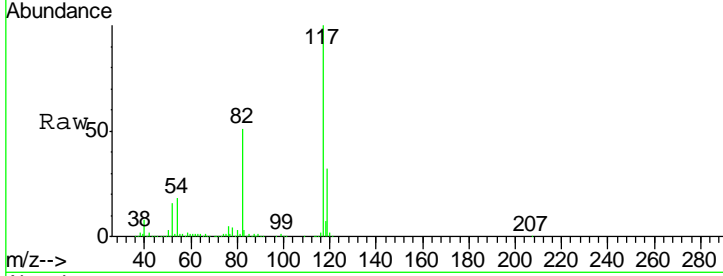




#63
 Chlorobenzene-d5
 Concen: 50.000 ug/l
 RT: 11.41 min Scan# 2996
 Delta R.T. -0.00 min
 Lab File: VN054407.D
 Acq: 18 Mar 2019 22:11

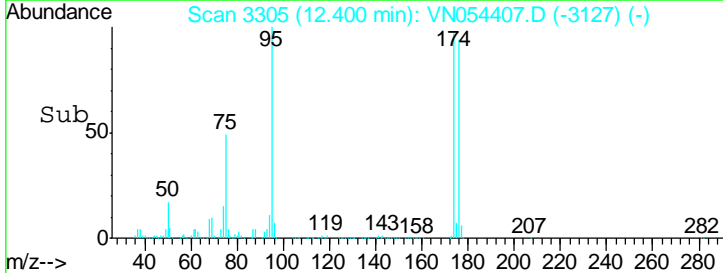
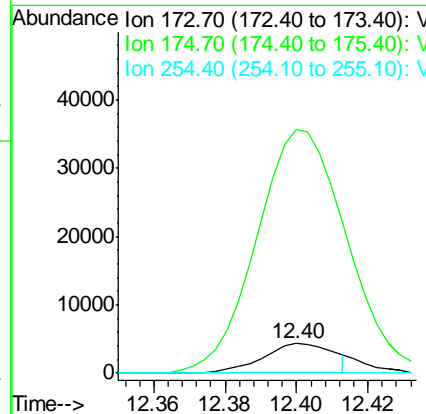
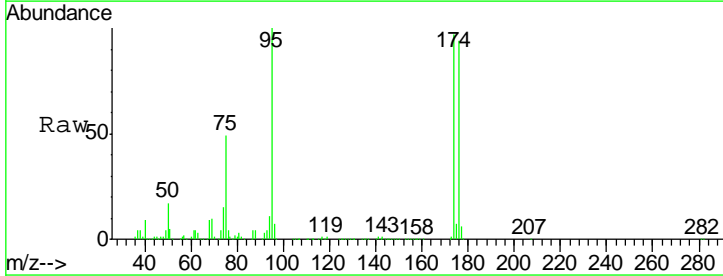
Instrument :
 MSVOA_N
 ClientSampled :

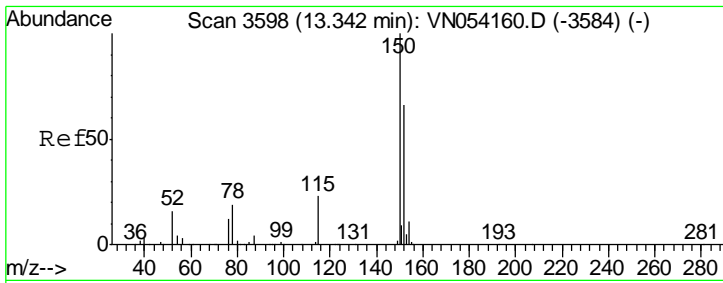
Tgt Ion	Resp	Lower	Upper
117	2146882		
82	51.4	40.0	60.0
119	32.3	25.8	38.6



#71
 Bromoform
 Concen: 2.780 ug/l
 RT: 12.40 min Scan# 3305
 Delta R.T. 0.27 min
 Lab File: VN054407.D
 Acq: 18 Mar 2019 22:11

Tgt Ion	Resp	Lower	Upper
173	5883		
175	909.9	24.4	73.2#
254	0.0	0.1	0.1#

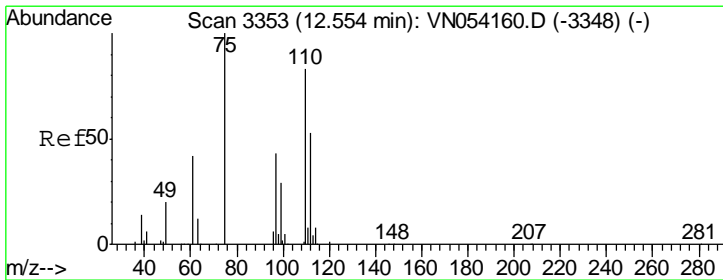
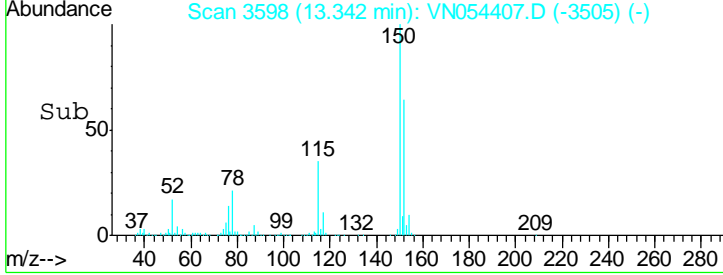
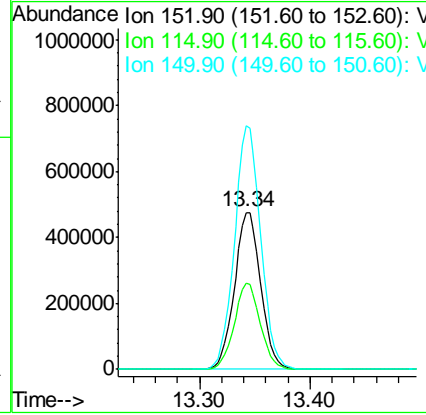
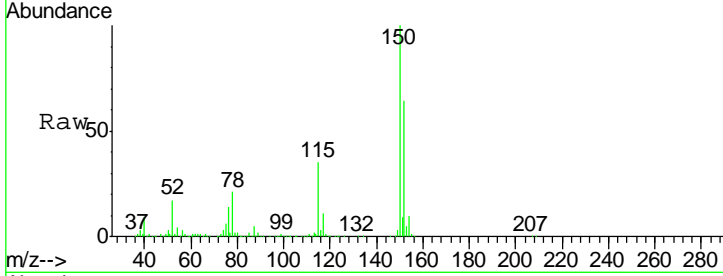




#72
 1,4-Dichlorobenzene-d4
 Concen: 50.000 ug/l
 RT: 13.34 min Scan# 3598
 Delta R.T. -0.00 min
 Lab File: VN054407.D
 Acq: 18 Mar 2019 22:11

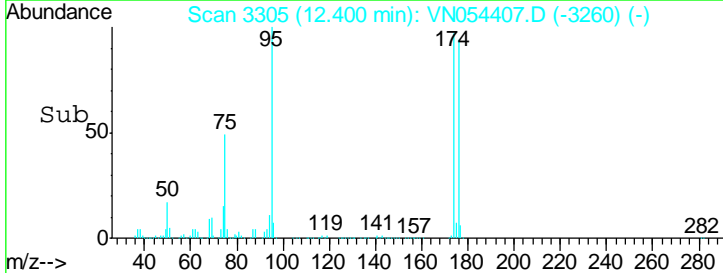
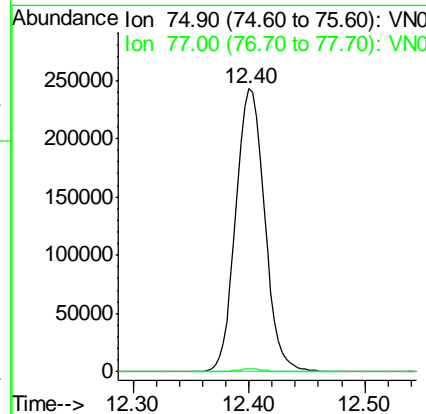
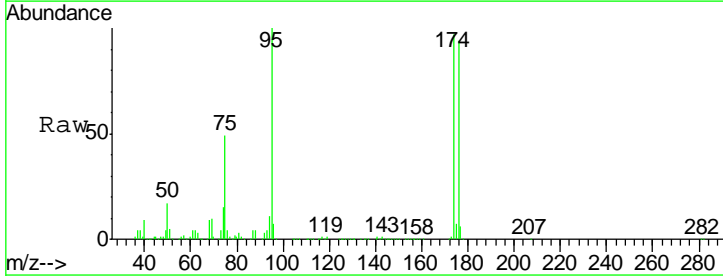
Instrument : MSVOA_N
 ClientSampled :

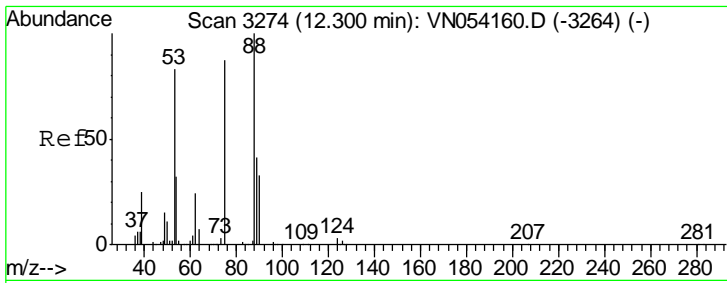
Tgt Ion	Resp	Lower	Upper
152	100		
115	54.3	27.2	81.6
150	155.6	0.0	349.2



#76
 1,2,3-Trichloropropane
 Concen: 36.518 ug/l
 RT: 12.40 min Scan# 3305
 Delta R.T. -0.15 min
 Lab File: VN054407.D
 Acq: 18 Mar 2019 22:11

Tgt Ion	Resp	Lower	Upper
75	100		
77	1.0	0.0	0.0#

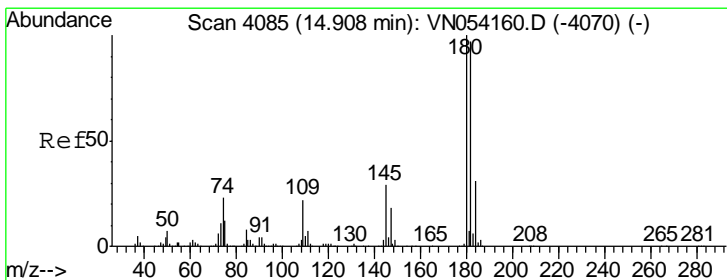
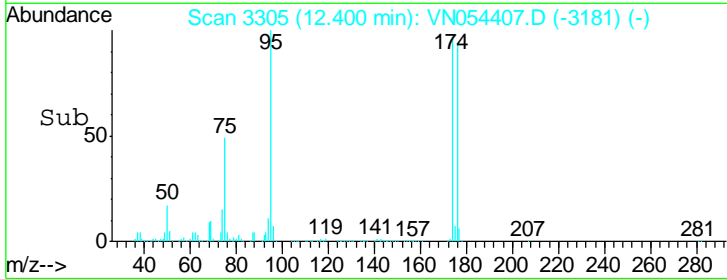
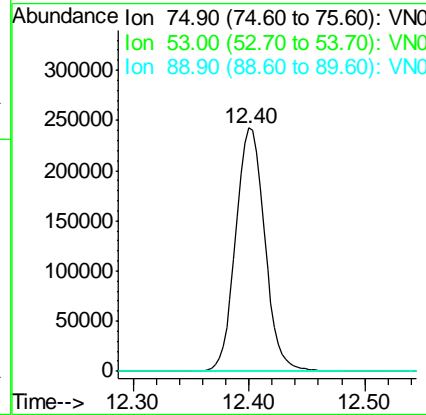
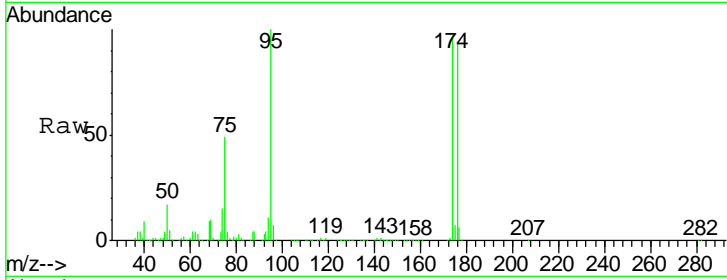




#81
 trans-1,4-Dichloro-2-butene
 Concen: 124.836 ug/l
 RT: 12.40 min Scan# 3305
 Delta R.T. 0.10 min
 Lab File: VN054407.D
 Acq: 18 Mar 2019 22:11

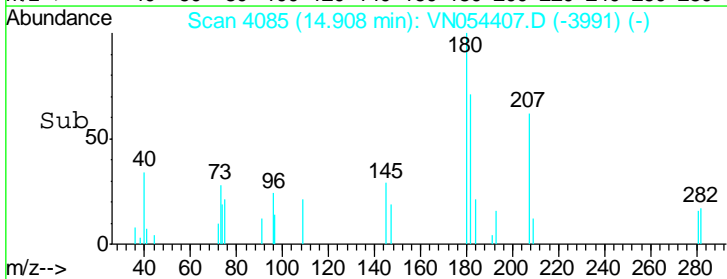
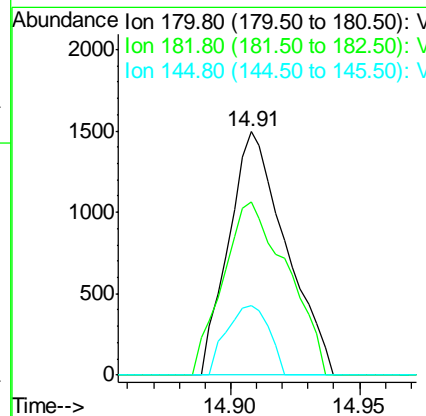
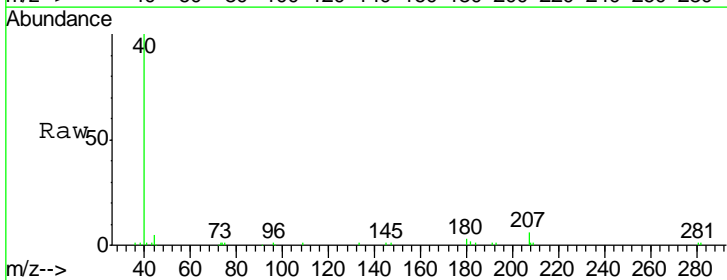
Instrument :
 MSVOA_N
 ClientSampled :

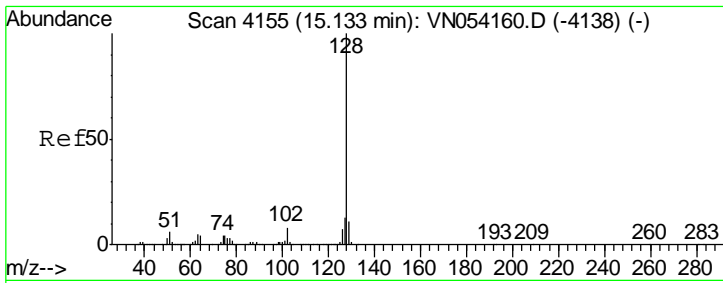
Tgt Ion	Resp	Lower	Upper
75	100		
53	0.0	76.2	114.2#
89	0.0	39.2	58.8#



#93
 1,2,4-Trichlorobenzene
 Concen: 2.649 ug/l
 RT: 14.91 min Scan# 4085
 Delta R.T. 0.00 min
 Lab File: VN054407.D
 Acq: 18 Mar 2019 22:11

Tgt Ion	Resp	Lower	Upper
180	100		
182	80.5	48.0	144.2
145	21.4	14.2	42.8





#95
 Naphthalene
 Concen: 3.667 ug/l
 RT: 15.13 min Scan# 4155
 Delta R.T. -0.00 min
 Lab File: VN054407.D
 Acq: 18 Mar 2019 22:11

Instrument :
 MSVOA_N
 ClientSampled :

Tot Ion	Ratio	Lower	Upper
128	100		
127	12.6	10.1	15.1
129	10.8	8.7	13.1

