

Data Path : Z:\VOASRV\HPCHEM1\MSVOA N\DATA\VN031820\
 Data File : VN060570.D
 Acq On : 17 Mar 2020 21:51
 Operator : JC/MD
 Sample : L1161-07 .2PPB LOD
 Misc : 5.00mL/MSVOA N/WATER
 ALS Vial : 33 Sample Multiplier: 1

Instrument :
 MSVOA_N
Client Sampled :
 LOD-MDL-WATER-01-QT1-2020

Manual Integrations
APPROVED
 MMDadoda
 3/19/2020 1:02:08 PM

Quant Time: Mar 18 09:13:08 2020
 Quant Method : Z:\VOASRV\HPCHEM1\MSVOA_N\METHODS\82N031820W.M
 Quant Title : SW846 8260
 QLast Update : Wed Mar 18 08:49:09 2020
 Response via : Initial Calibration

Internal Standards	R.T.	QIon	Response	Conc	Units	Dev(Min)
1) Pentafluorobenzene	7.64	168	205696	50.00	ug/l	0.00
34) 1,4-Difluorobenzene	8.57	114	349270	50.00	ug/l	0.00
63) Chlorobenzene-d5	11.40	117	311024	50.00	ug/l	0.00
72) 1,4-Dichlorobenzene-d4	13.34	152	133094	50.00	ug/l	0.00

System Monitoring Compounds	R.T.	QIon	Response	Conc	Units	Dev(Min)
33) 1,2-Dichloroethane-d4	8.00	65	139107	49.26	ug/l	0.00
Spiked Amount				50.000		
Recovery						98.52%
35) Dibromofluoromethane	7.57	113	101956	48.28	ug/l	0.00
Spiked Amount				50.000		
Recovery						96.56%
50) Toluene-d8	10.08	98	409052	47.42	ug/l	0.00
Spiked Amount				50.000		
Recovery						94.84%
62) 4-Bromofluorobenzene	12.40	95	139631	44.17	ug/l	0.00
Spiked Amount				50.000		
Recovery						88.34%

Target Compounds	R.T.	QIon	Response	Conc	Units	Qvalue
3) Chloromethane	2.03	50	1077	0.290	ug/l	97
12) 1,1-Dichloroethene	3.72	96	461	0.207	ug/l #	23
13) Acrolein	3.60	56	129	0.280	ug/l #	14
15) Acrylonitrile	4.97	53	625	0.512	ug/l #	54
16) Acetone	3.80	43	1243	1.243	ug/l	100
17) Carbon Disulfide	4.03	76	3417	0.504	ug/l #	91
20) Methylene Chloride	4.54	84	548m	0.223	ug/l	
21) trans-1,2-Dichloroethene	5.00	96	549m	0.231	ug/l	
23) Vinyl Acetate	5.87	43	4297	0.636	ug/l #	74
25) 2-Butanone	6.81	43	1378m	0.851	ug/l	
29) Tetrahydrofuran	7.19	42	988	0.863	ug/l #	53
31) Cyclohexane	7.64	56	5250	1.154	ug/l #	1
36) 1,1-Dichloropropene	7.77	75	823	0.243	ug/l #	42
37) Ethyl Acetate	6.91	43	732m	0.200	ug/l	
39) Methylcyclohexane	9.07	83	879m	0.219	ug/l	
40) Benzene	8.02	78	2062	0.202	ug/l	91
42) 1,2-Dichloroethane	8.10	62	875m	0.251	ug/l	
44) Trichloroethene	8.82	130	698	0.271	ug/l	58
51) 4-Methyl-2-Pentanone	9.97	43	3439	1.003	ug/l	98
53) t-1,3-Dichloropropene	10.37	75	1036	0.266	ug/l #	82
58) 2-Chloroethyl Vinyl ether	9.68	63	1668	0.907	ug/l	96
59) 2-Hexanone	10.74	43	2086	0.844	ug/l	87
64) Tetrachloroethene	10.63	164	681	0.278	ug/l	93
65) Chlorobenzene	11.42	112	1527	0.248	ug/l	95
67) Ethyl Benzene	11.51	91	2472	0.216	ug/l #	77
68) m/p-Xylenes	11.62	106	1895	0.445	ug/l	88
69) o-Xylene	11.95	106	818	0.201	ug/l	96
70) Styrene	11.96	104	1476	0.222	ug/l	88
73) Isopropylbenzene	12.25	105	2196	0.220	ug/l	83
74) N-amyl acetate	12.07	43	1151	0.249	ug/l #	60
77) Bromobenzene	12.52	156	618	0.257	ug/l	95
78) n-propylbenzene	12.59	91	3342	0.283	ug/l	88
79) 2-Chlorotoluene	12.67	91	1792	0.254	ug/l	85
80) 1,3,5-Trimethylbenzene	12.73	105	1977	0.233	ug/l	94

Data Path : Z:\VOASRV\HPCHEM1\MSVOA N\DATA\VN031820\
 Data File : VN060570.D
 Acq On : 17 Mar 2020 21:51
 Operator : JC/MD
 Sample : L1161-07 .2PPB LOD
 Misc : 5.00mL/MSVOA N/WATER
 ALS Vial : 33 Sample Multiplier: 1

Instrument :
 MSVOA_N
ClientSampleId :
 LOD-MDL-WATER-01-QT1-2020

Manual Integrations
APPROVED

MMDadoda
 3/19/2020 1:02:08 PM

Quant Time: Mar 18 09:13:08 2020
 Quant Method : Z:\VOASRV\HPCHEM1\MSVOA_N\METHODS\82N031820W.M
 Quant Title : SW846 8260
 QLast Update : Wed Mar 18 08:49:09 2020
 Response via : Initial Calibration

Internal Standards	R.T.	QIon	Response	Conc	Units	Dev(Min)
82) 4-Chlorotoluene	12.77	91	2310	0.322	ug/l	93
83) tert-Butylbenzene	12.99	119	1597	0.227	ug/l #	84
84) 1,2,4-Trimethylbenzene	13.04	105	1991	0.237	ug/l	84
85) sec-Butylbenzene	13.17	105	2203	0.233	ug/l	97
86) p-Isopropyltoluene	13.28	119	2253	0.265	ug/l	97
87) 1,3-Dichlorobenzene	13.28	146	1399	0.330	ug/l	95
88) 1,4-Dichlorobenzene	13.36	146	1753m	0.411	ug/l	
89) n-Butylbenzene	13.61	91	2491	0.325	ug/l	96
91) 1,2-Dichlorobenzene	13.65	146	1107	0.273	ug/l	93
93) 1,2,4-Trichlorobenzene	14.90	180	1100	0.441	ug/l	94
94) Hexachlorobutadiene	15.00	225	477	0.390	ug/l #	59
95) Naphthalene	15.13	128	2972	0.396	ug/l #	86
96) 1,2,3-Trichlorobenzene	15.31	180	961	0.391	ug/l	97

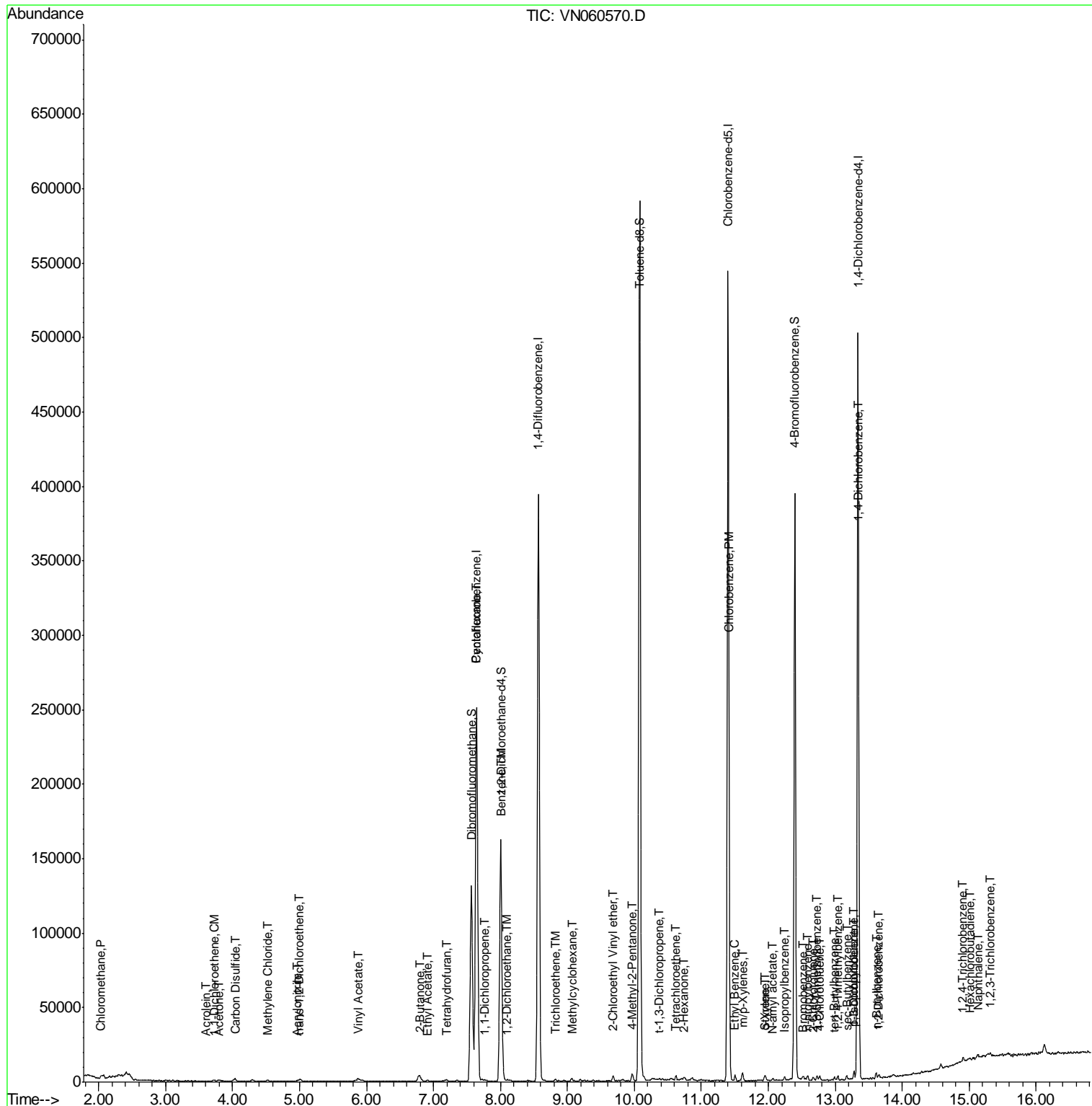
(#) = qualifier out of range (m) = manual integration (+) = signals summed

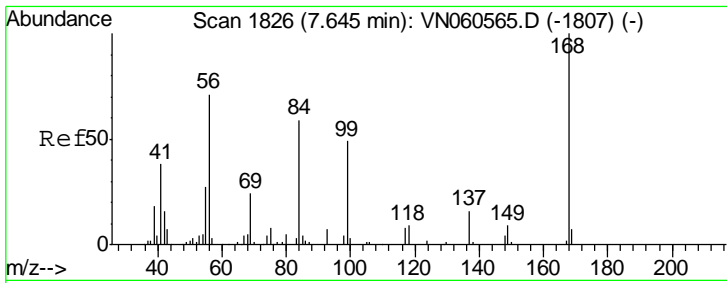
Data Path : Z:\VOASRV\HPCHEM1\MSVOA N\DATA\VN031820\
 Data File : VN060570.D
 Acq On : 17 Mar 2020 21:51
 Operator : JC/MD
 Sample : L1161-07 .2PPB LOD
 Misc : 5.00mL/MSVOA N/WATER
 ALS Vial : 33 Sample Multiplier: 1

Instrument :
 MSVOA_N
Client Sampled :
 LOD-MDL-WATER-01-QT1-2020

Manual Integrations
APPROVED
 MMDadoda
 3/19/2020 1:02:08 PM

Quant Time: Mar 18 09:13:08 2020
 Quant Method : Z:\VOASRV\HPCHEM1\MSVOA_N\METHODS\82N031820W.M
 Quant Title : SW846 8260
 QLast Update : Wed Mar 18 08:49:09 2020
 Response via : Initial Calibration





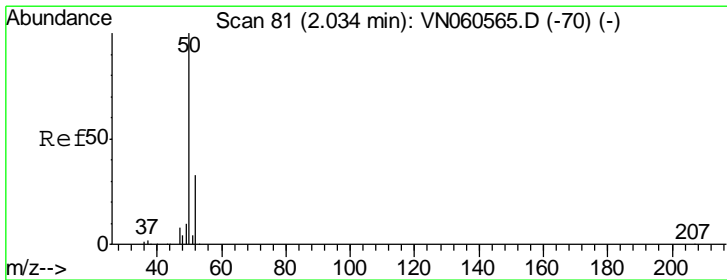
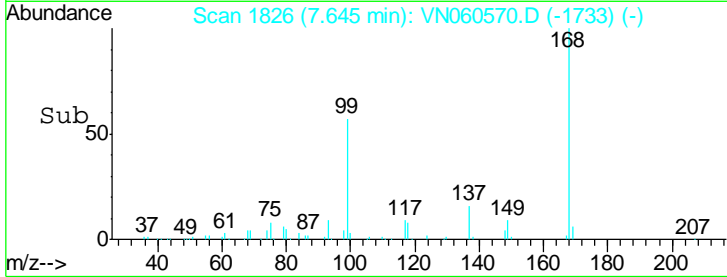
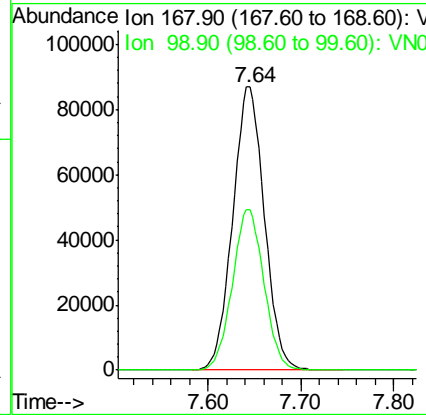
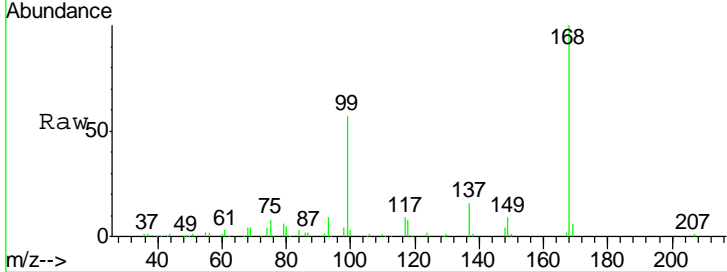
#1
 Pentafluorobenzene
 Concen: 50.000 ug/l
 RT: 7.64 min Scan# 1826
 Delta R.T. 0.00 min
 Lab File: VN060570.D
 Acq: 17 Mar 2020 21:51

Instrument :
 MSVOA_N
 ClientSampled :
 LOD-MDL-WATER-01-QT1-2020

Tgt Ion	Resp	Lower	Upper
168	100		
99	56.7	44.0	66.0

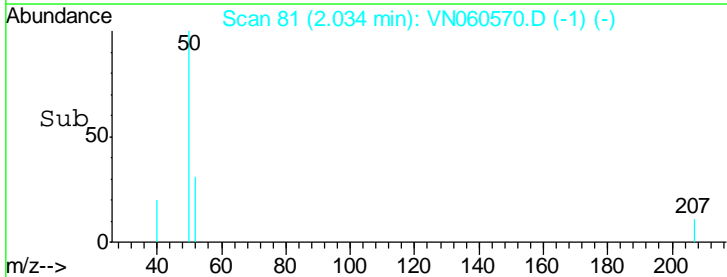
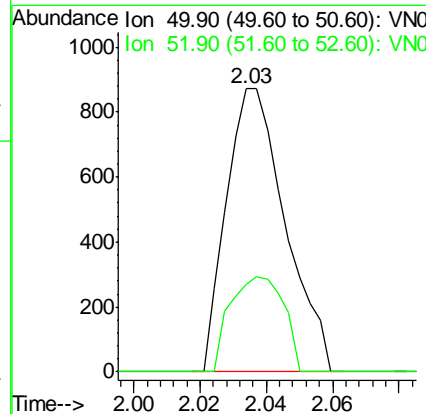
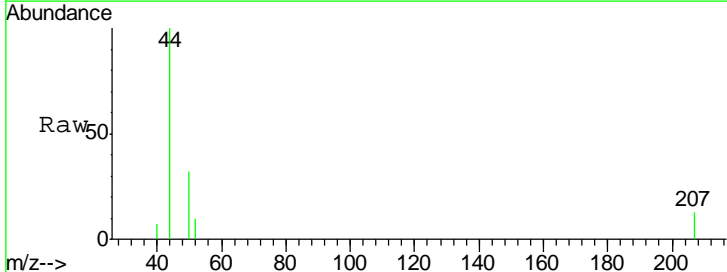
Manual Integrations
 APPROVED

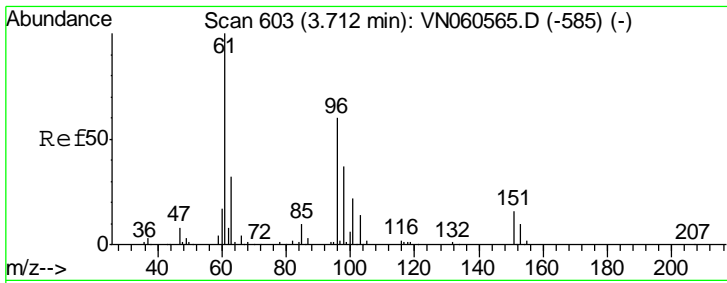
MMDadoda
 3/19/2020 1:02:08 PM



#3
 Chloromethane
 Concen: 0.290 ug/l
 RT: 2.03 min Scan# 81
 Delta R.T. 0.00 min
 Lab File: VN060570.D
 Acq: 17 Mar 2020 21:51

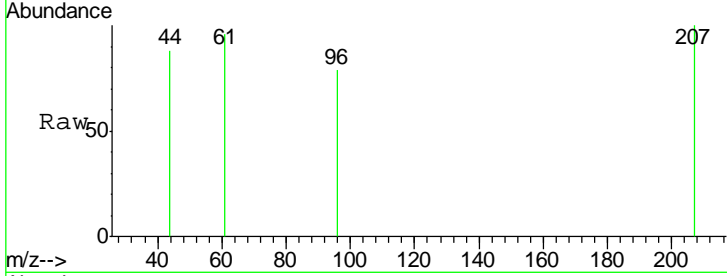
Tgt Ion	Resp	Lower	Upper
50	100		
52	31.0	26.2	39.2





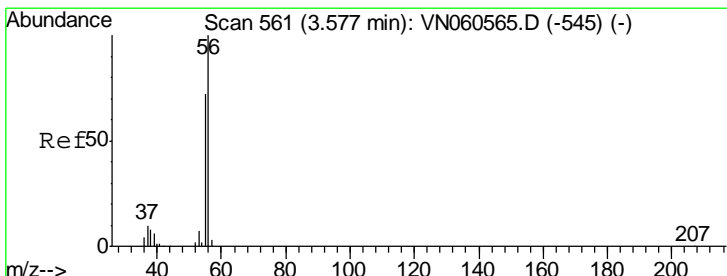
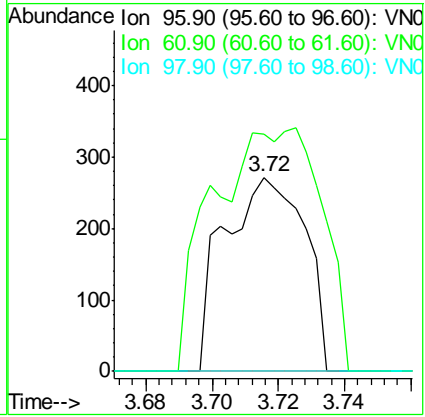
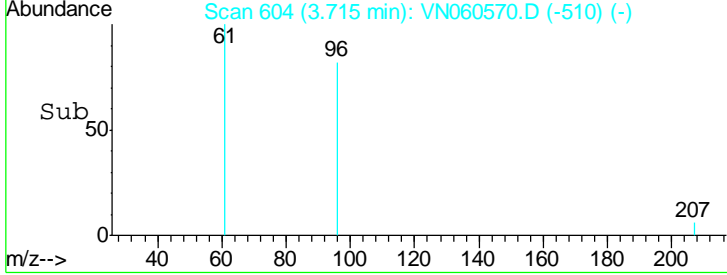
#12
 1,1-Dichloroethene
 Concen: 0.207 ug/l
 RT: 3.72 min Scan# 604
 Delta R.T. 0.00 min
 Lab File: VN060570.D
 Acq: 17 Mar 2020 21:51

Instrument :
 MSVOA_N
ClientSampled :
 LOD-MDL-WATER-01-QT1-2020

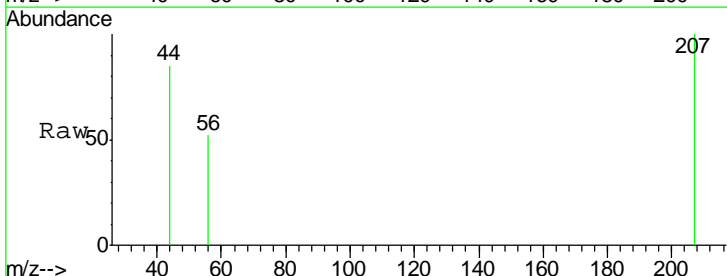


Tgt Ion	Resp	Lower	Upper
96	461		
61	100	134.1	201.1#
98	0.0	49.9	74.9#

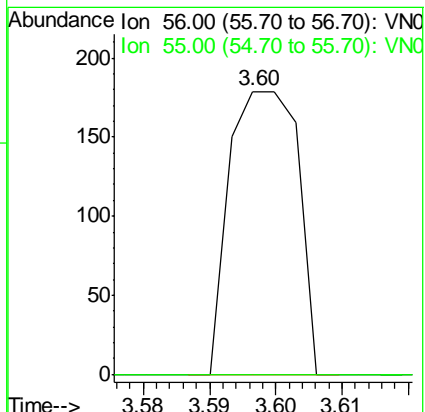
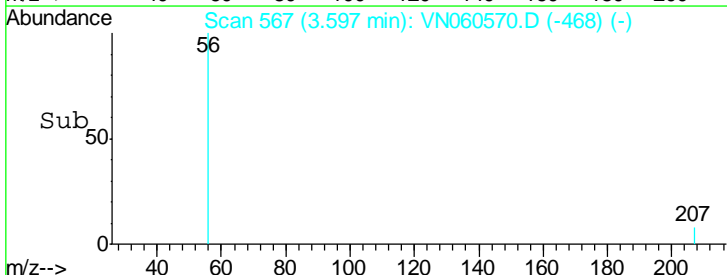
Manual Integrations
APPROVED
 MMDadoda
 3/19/2020 1:02:08 PM

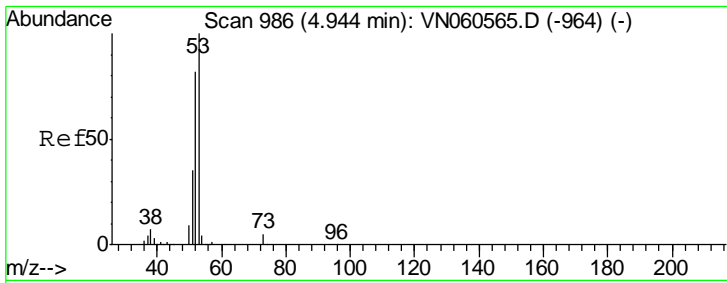


#13
 Acrolein
 Concen: 0.280 ug/l
 RT: 3.60 min Scan# 567
 Delta R.T. 0.02 min
 Lab File: VN060570.D
 Acq: 17 Mar 2020 21:51



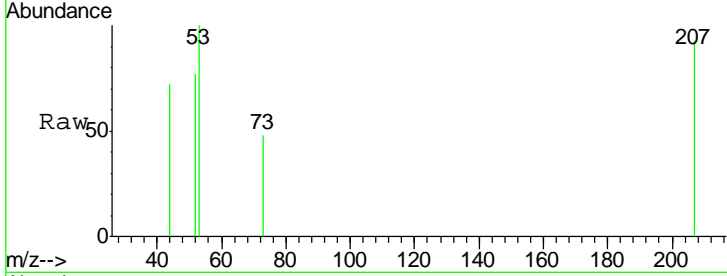
Tgt Ion	Resp	Lower	Upper
56	129		
55	100	56.7	85.1#
55	0.0		





#15
 Acrylonitrile
 Concen: 0.512 ug/l
 RT: 4.97 min Scan# 995
 Delta R.T. 0.03 min
 Lab File: VN060570.D
 Acq: 17 Mar 2020 21:51

Instrument :
 MSVOA_N
ClientSampled :
 LOD-MDL-WATER-01-QT1-2020

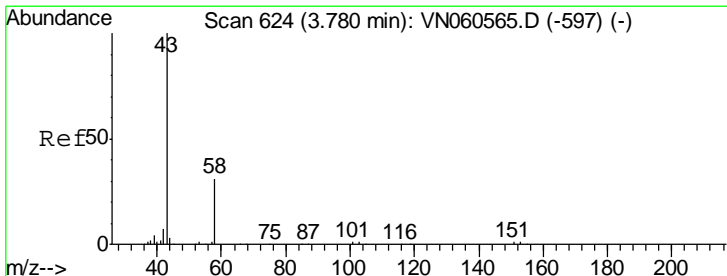
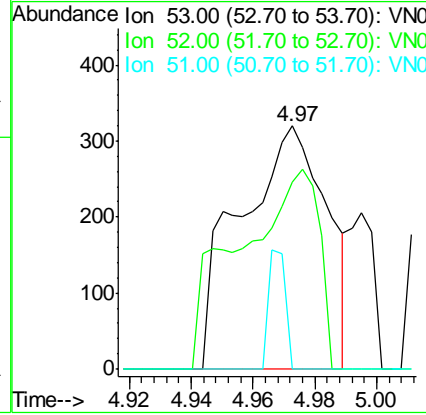
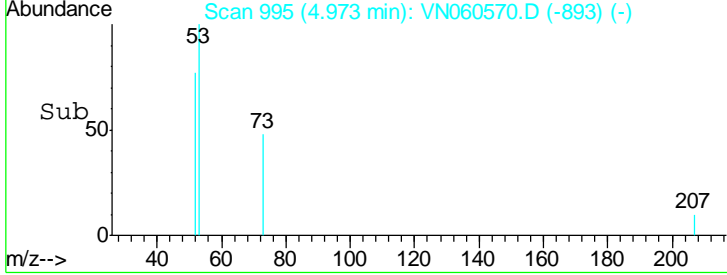


Tgt Ion: 53 Resp: 625

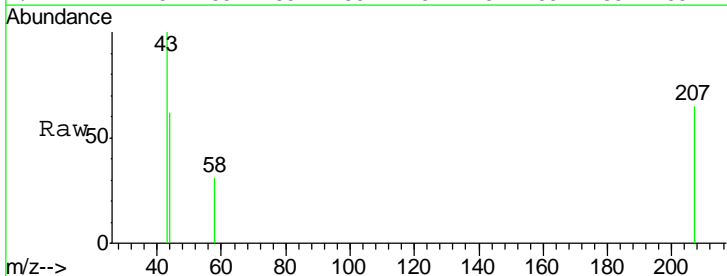
Ion	Ratio	Lower	Upper
53	100		
52	40.8	66.2	99.4#
51	9.4	28.7	43.1#

Manual Integrations
APPROVED

MMDadoda
 3/19/2020 1:02:08 PM

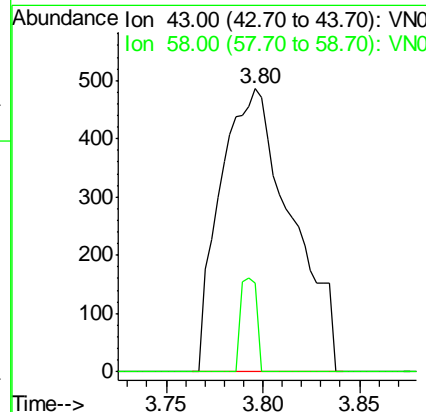
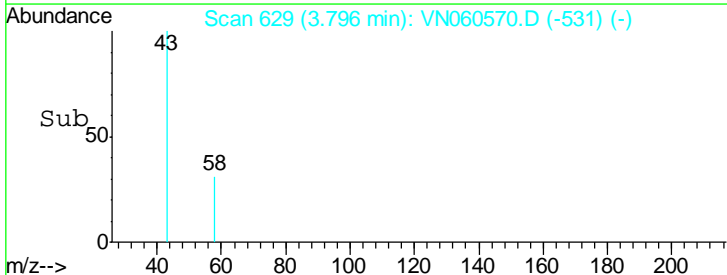


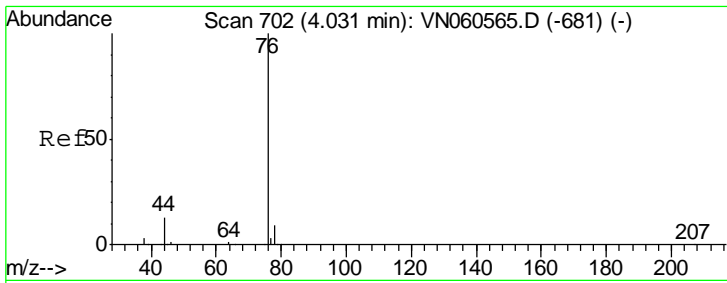
#16
 Acetone
 Concen: 1.243 ug/l
 RT: 3.80 min Scan# 629
 Delta R.T. 0.02 min
 Lab File: VN060570.D
 Acq: 17 Mar 2020 21:51



Tgt Ion: 43 Resp: 1243

Ion	Ratio	Lower	Upper
43	100		
58	31.5	25.1	37.7





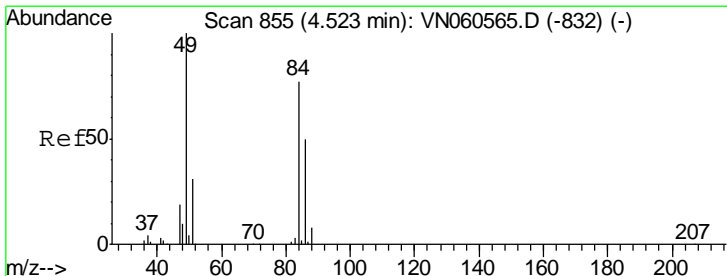
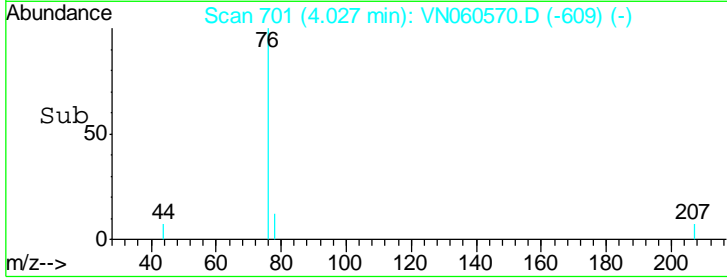
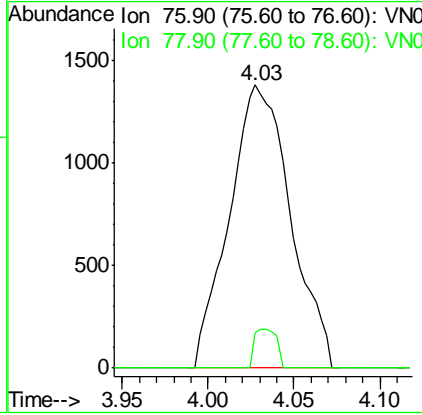
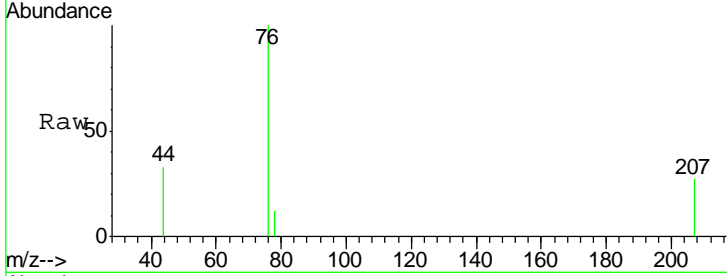
#17
 Carbon Disulfide
 Concen: 0.504 ug/l
 RT: 4.03 min Scan# 701
 Delta R.T. -0.00 min
 Lab File: VN060570.D
 Acq: 17 Mar 2020 21:51

Instrument :
 MSVOA_N
ClientSampled :
 LOD-MDL-WATER-01-QT1-2020

Tgt Ion	Resp	Lower	Upper
76	3417		
76	100		
78	12.3	7.2	10.8#

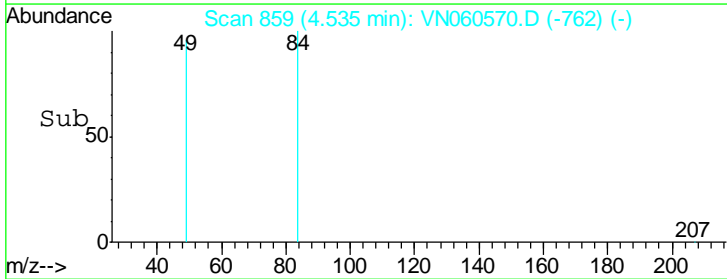
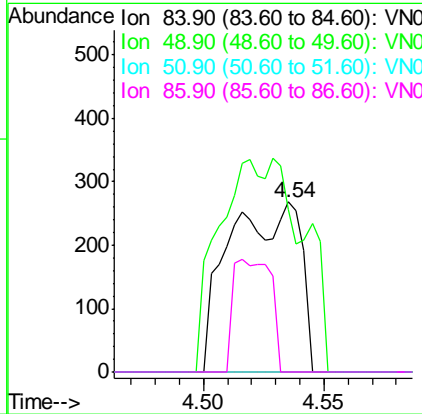
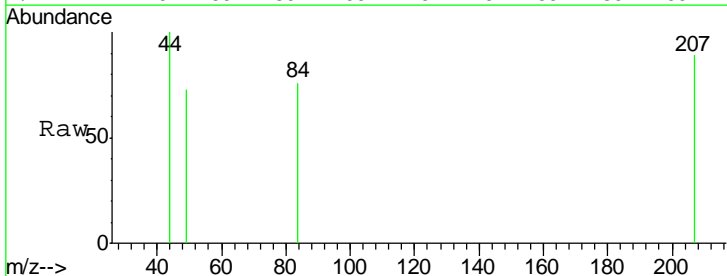
Manual Integrations
APPROVED

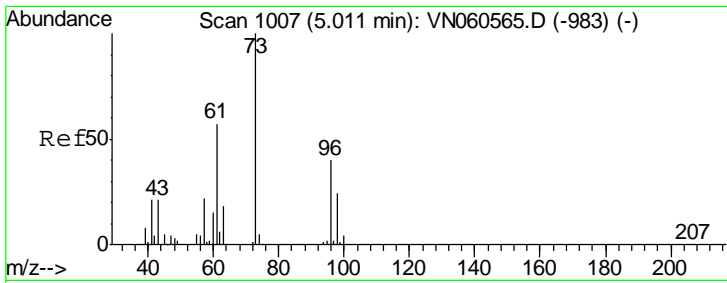
MMDadoda
 3/19/2020 1:02:08 PM



#20
 Methylene Chloride
 Concen: 0.223 ug/l m
 RT: 4.54 min Scan# 859
 Delta R.T. 0.01 min
 Lab File: VN060570.D
 Acq: 17 Mar 2020 21:51

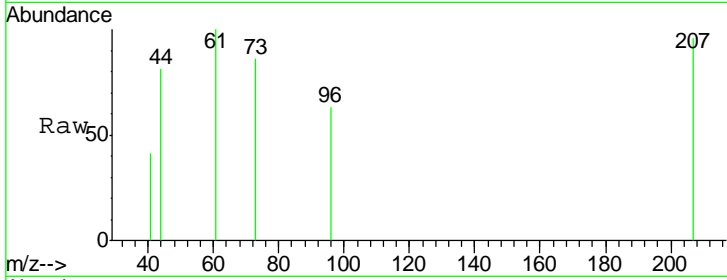
Tgt Ion	Resp	Lower	Upper
84	548		
84	100		
49	95.5	103.3	154.9#
51	0.0	31.6	47.4#
86	0.0	52.0	78.0#





#21
 trans-1,2-Dichloroethene
 Concen: 0.231 ug/l m
 RT: 5.00 min Scan# 1005
 Delta R.T. -0.01 min
 Lab File: VN060570.D
 Acq: 17 Mar 2020 21:51

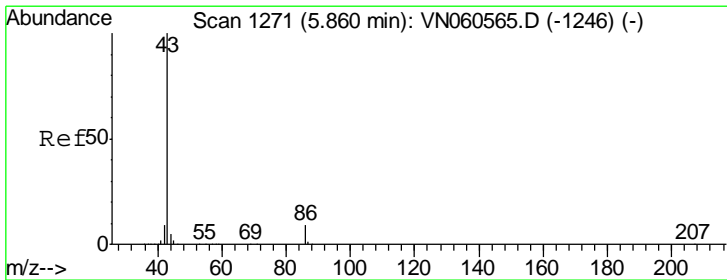
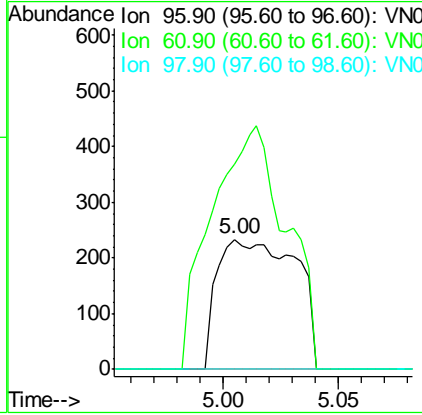
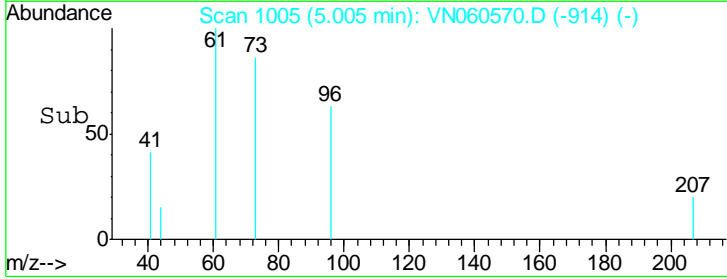
Instrument :
 MSVOA_N
ClientSampled :
 LOD-MDL-WATER-01-QT1-2020



Tgt Ion	Resp	Lower	Upper
96	549		
96	100		
61	157.7	114.4	171.6
98	0.0	48.4	72.6#

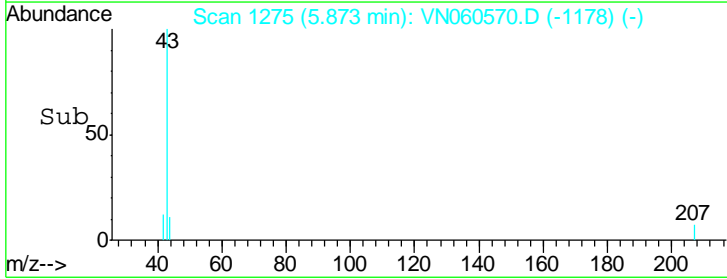
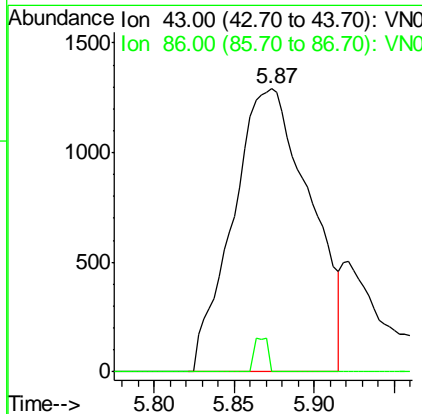
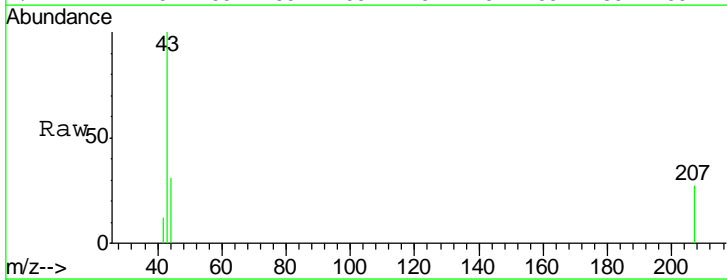
Manual Integrations
APPROVED

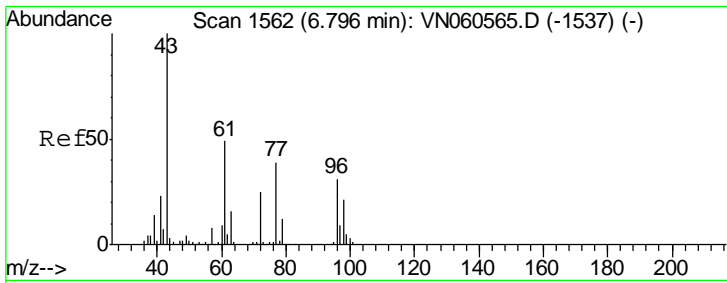
MMDadoda
 3/19/2020 1:02:08 PM



#23
 Vinyl Acetate
 Concen: 0.636 ug/l
 RT: 5.87 min Scan# 1275
 Delta R.T. 0.01 min
 Lab File: VN060570.D
 Acq: 17 Mar 2020 21:51

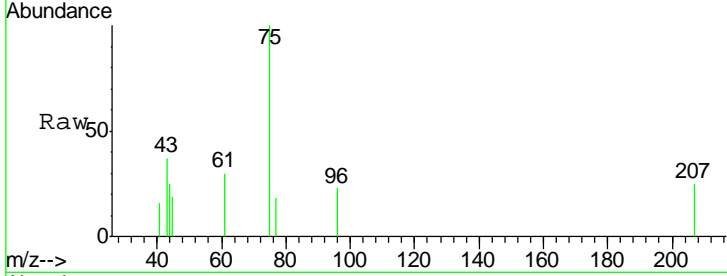
Tgt Ion	Resp	Lower	Upper
43	4297		
43	100		
86	0.0	7.6	11.4#





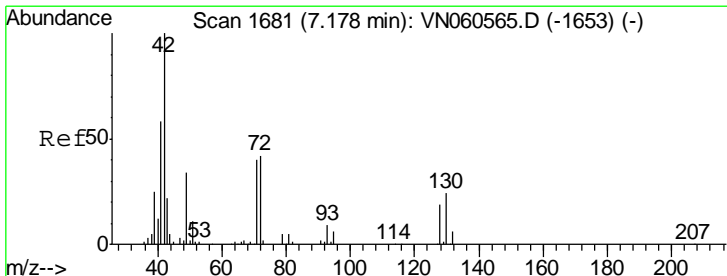
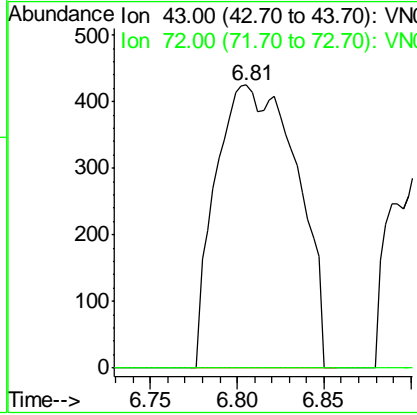
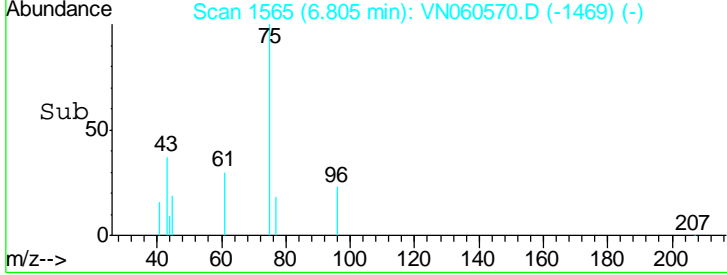
#25
 2-Butanone
 Concen: 0.851 ug/l m
 RT: 6.81 min Scan# 1565
 Delta R.T. 0.01 min
 Lab File: VN060570.D
 Acq: 17 Mar 2020 21:51

Instrument :
 MSVOA_N
ClientSampled :
 LOD-MDL-WATER-01-QT1-2020

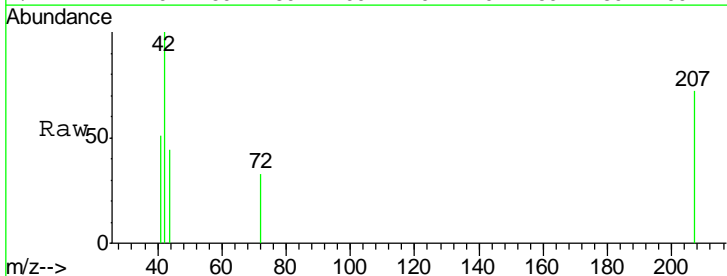


Tgt Ion: 43 Resp: 1378
 Ion Ratio Lower Upper
 43 100
 72 0.0 20.4 30.6#

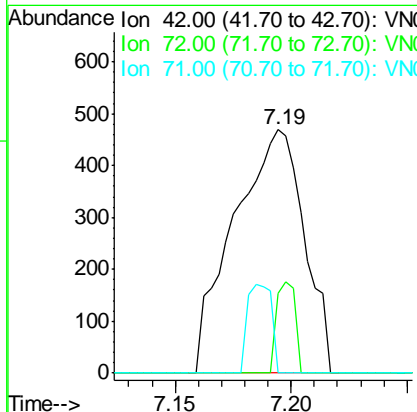
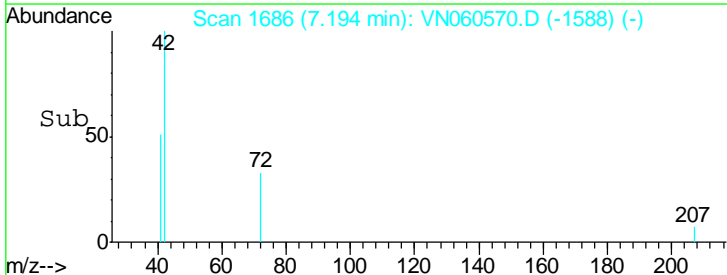
Manual Integrations
APPROVED
 MMDadoda
 3/19/2020 1:02:08 PM

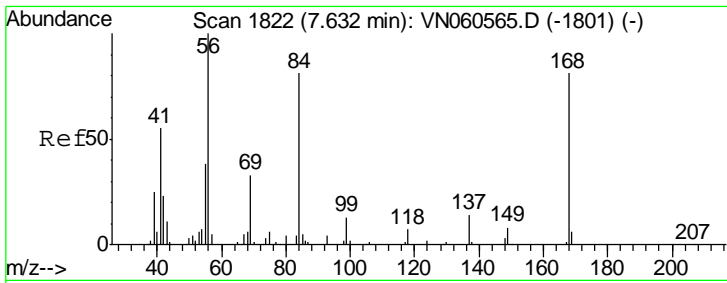


#29
 Tetrahydrofuran
 Concen: 0.863 ug/l
 RT: 7.19 min Scan# 1686
 Delta R.T. 0.02 min
 Lab File: VN060570.D
 Acq: 17 Mar 2020 21:51



Tgt Ion: 42 Resp: 988
 Ion Ratio Lower Upper
 42 100
 72 9.6 33.2 49.8#
 71 12.7 31.1 46.7#





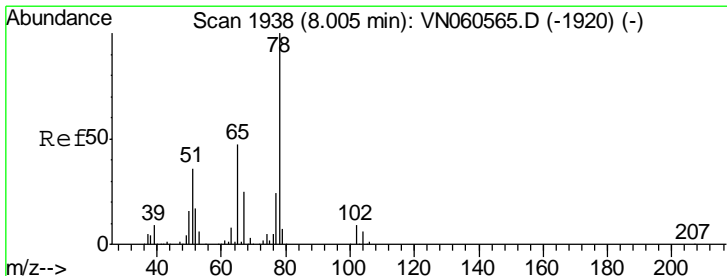
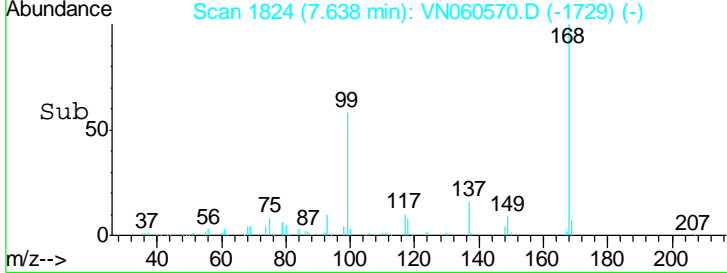
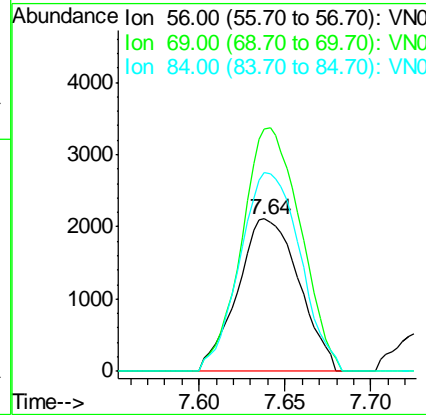
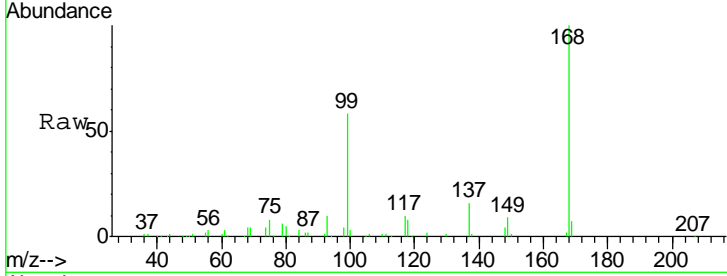
#31
 Cyclohexane
 Concen: 1.154 ug/l
 RT: 7.64 min Scan# 1824
 Delta R.T. 0.01 min
 Lab File: VN060570.D
 Acq: 17 Mar 2020 21:51

Instrument : MSVOA_N
 ClientSampled : LOD-MDL-WATER-01-QT1-2020

Tgt Ion	Resp	Lower	Upper
56	5250		
56	100		
69	158.9	26.6	40.0#
84	130.6	64.3	96.5#

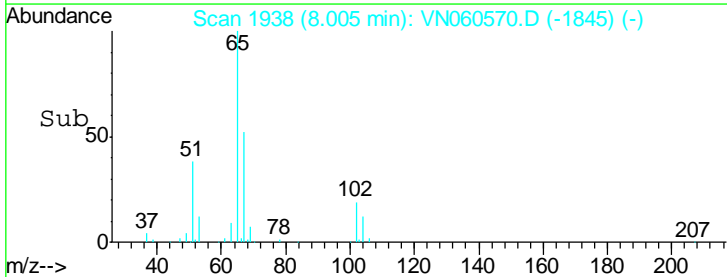
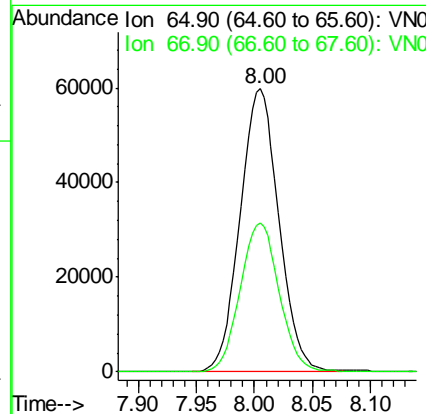
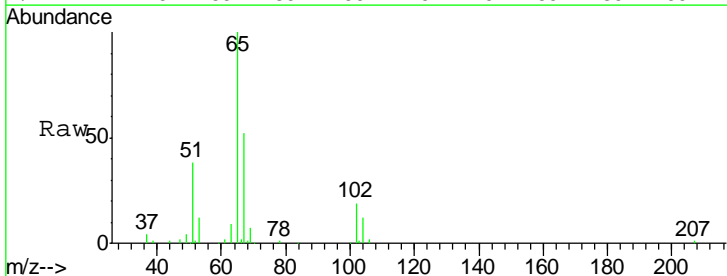
Manual Integrations
 APPROVED

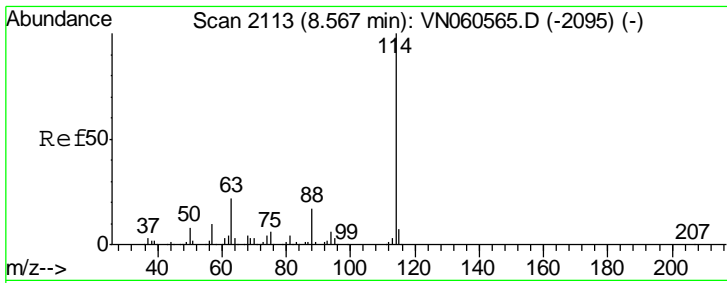
MMDadoda
 3/19/2020 1:02:08 PM



#33
 1,2-Dichloroethane-d4
 Concen: 49.263 ug/l
 RT: 8.00 min Scan# 1938
 Delta R.T. 0.00 min
 Lab File: VN060570.D
 Acq: 17 Mar 2020 21:51

Tgt Ion	Resp	Lower	Upper
65	139107		
65	100		
67	53.0	0.0	107.6





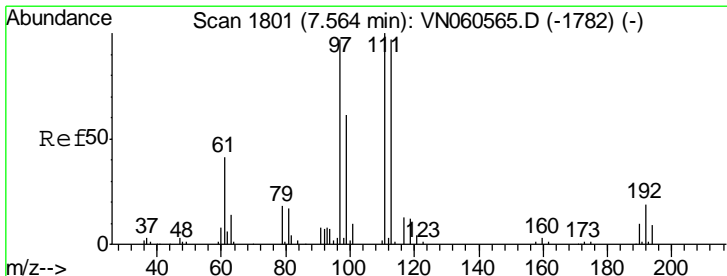
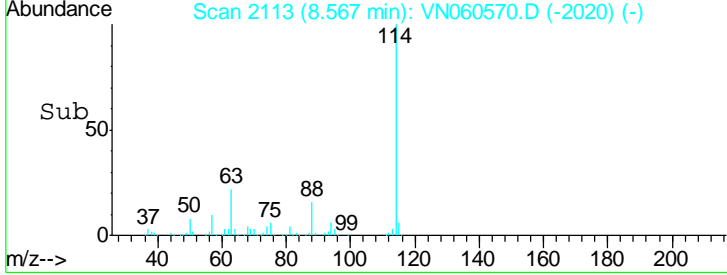
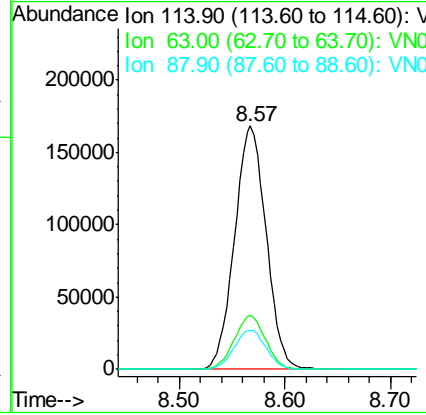
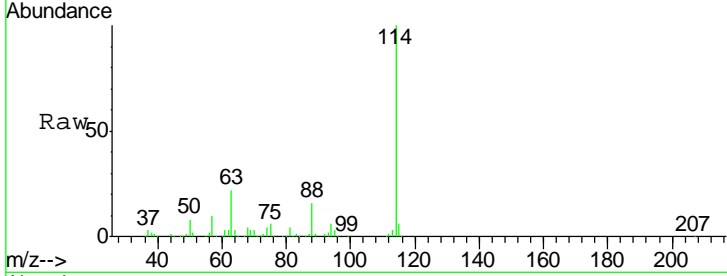
#34
 1,4-Difluorobenzene
 Concen: 50.000 ug/l
 RT: 8.57 min Scan# 2113
 Delta R.T. 0.00 min
 Lab File: VN060570.D
 Acq: 17 Mar 2020 21:51

Instrument : MSVOA_N
 ClientSampled : LOD-MDL-WATER-01-QT1-2020

Tgt Ion	Resp	Lower	Upper
114	100		
63	22.1	0.0	43.8
88	16.2	0.0	33.0

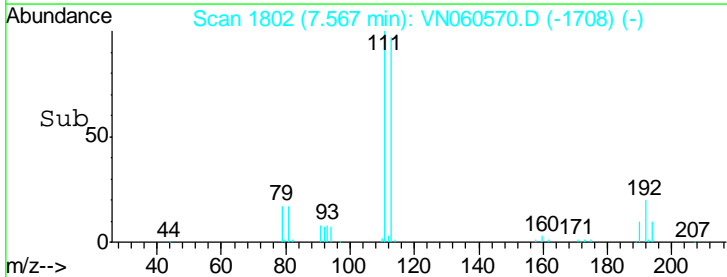
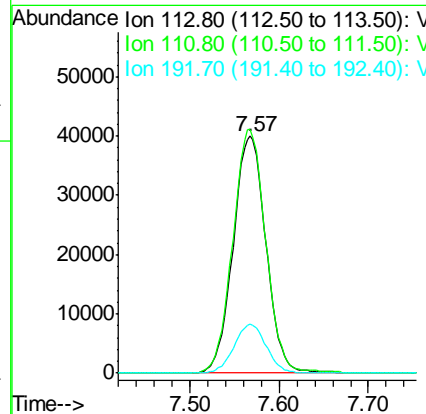
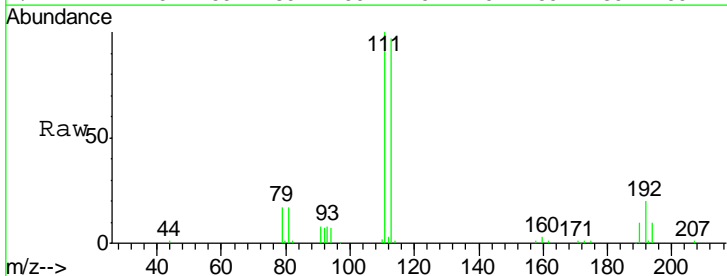
Manual Integrations
 APPROVED

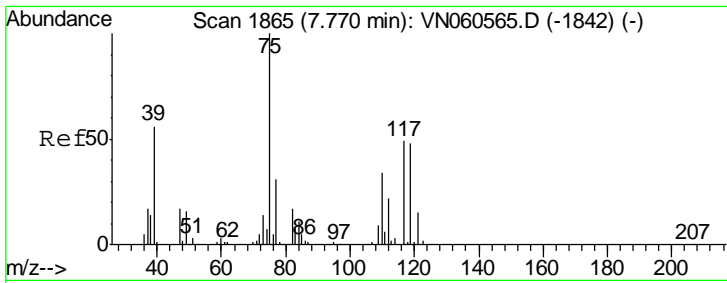
MMDadoda
 3/19/2020 1:02:08 PM



#35
 Dibromofluoromethane
 Concen: 48.276 ug/l
 RT: 7.57 min Scan# 1802
 Delta R.T. 0.00 min
 Lab File: VN060570.D
 Acq: 17 Mar 2020 21:51

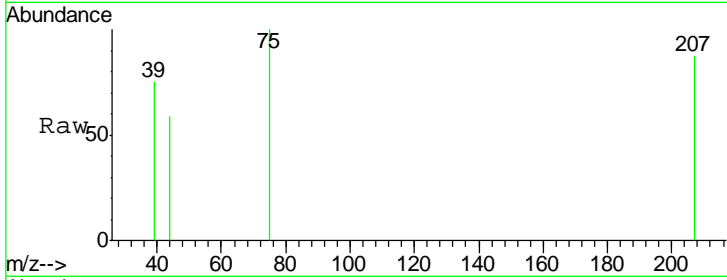
Tgt Ion	Resp	Lower	Upper
113	100		
111	102.3	82.9	124.3
192	20.2	15.8	23.8





#36
 1,1-Dichloropropene
 Concen: 0.243 ug/l
 RT: 7.77 min Scan# 1865
 Delta R.T. 0.00 min
 Lab File: VN060570.D
 Acq: 17 Mar 2020 21:51

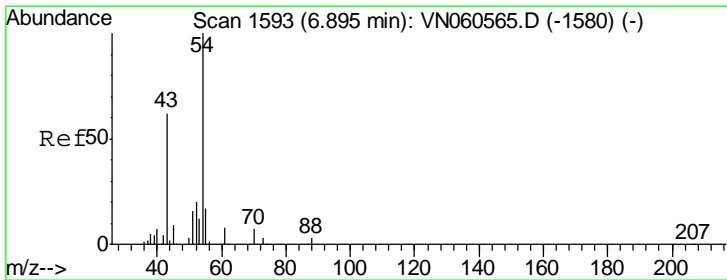
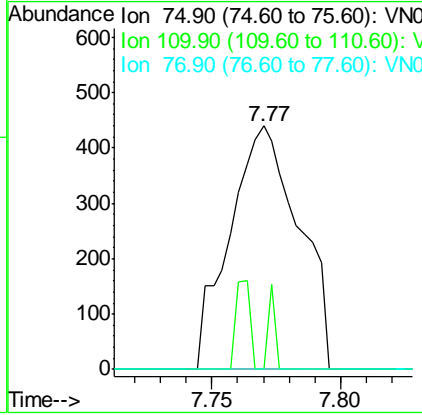
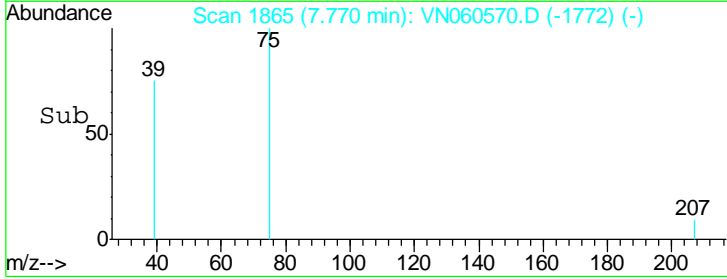
Instrument :
 MSVOA_N
ClientSampled :
 LOD-MDL-WATER-01-QT1-2020



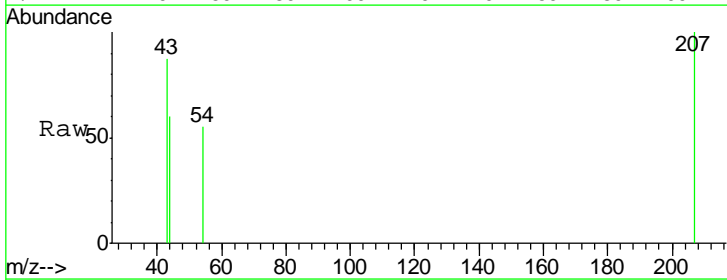
Tgt Ion	Resp	Lower	Upper
75	100		
110	0.0	16.9	50.6#
77	0.0	24.6	36.8#

Manual Integrations
APPROVED

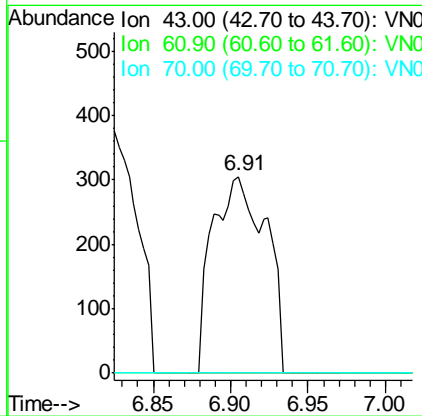
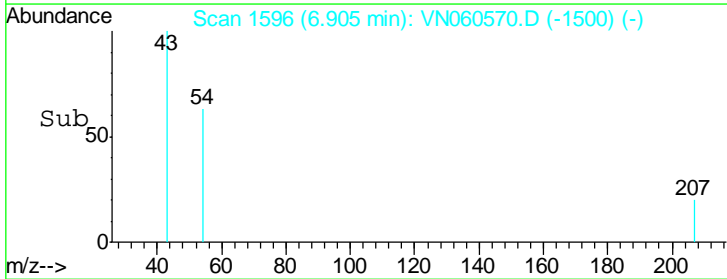
MMDadoda
 3/19/2020 1:02:08 PM

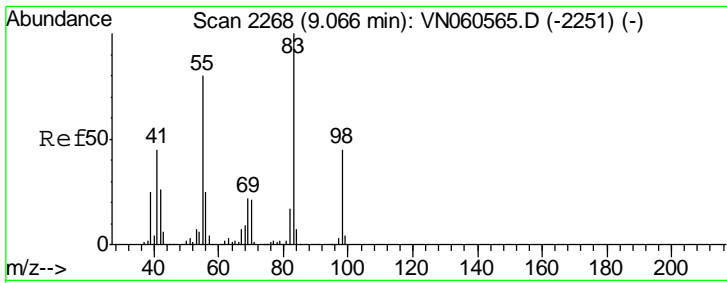


#37
 Ethyl Acetate
 Concen: 0.200 ug/l m
 RT: 6.91 min Scan# 1596
 Delta R.T. 0.01 min
 Lab File: VN060570.D
 Acq: 17 Mar 2020 21:51



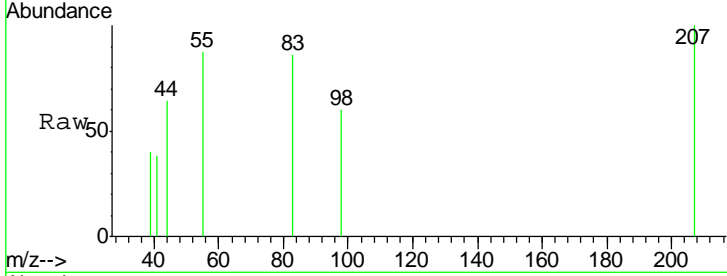
Tgt Ion	Resp	Lower	Upper
43	100		
61	0.0	10.6	15.8#
70	0.0	7.9	11.9#





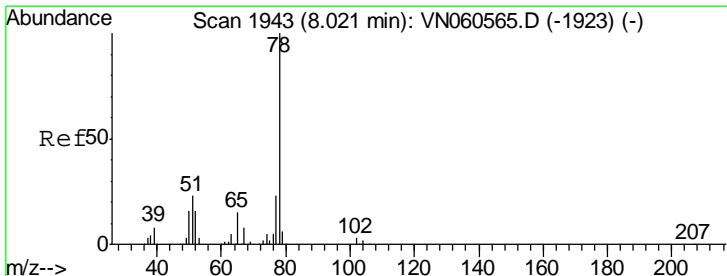
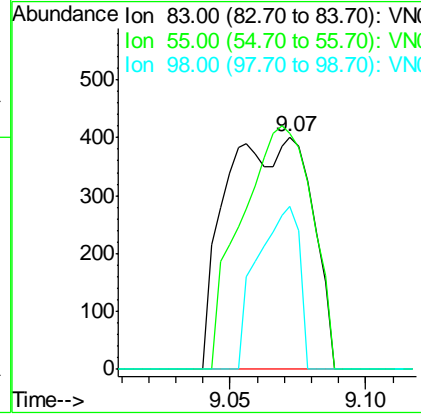
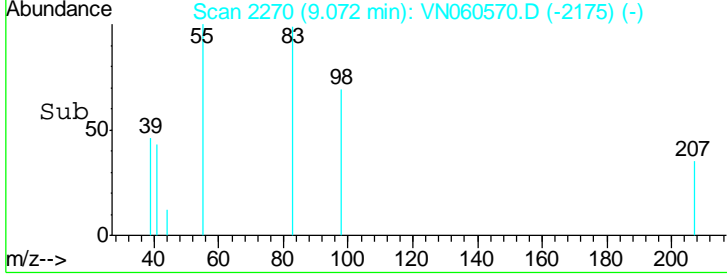
#39
 Methylcyclohexane
 Concen: 0.219 ug/l m
 RT: 9.07 min Scan# 2270
 Delta R.T. 0.01 min
 Lab File: VN060570.D
 Acq: 17 Mar 2020 21:51

Instrument :
 MSVOA_N
ClientSampled :
 LOD-MDL-WATER-01-QT1-2020

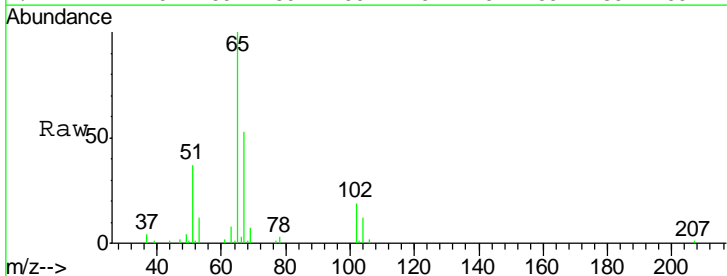


Tgt Ion	Resp	Lower	Upper
83	100		
55	101.2	63.6	95.4#
98	69.9	36.0	54.0#

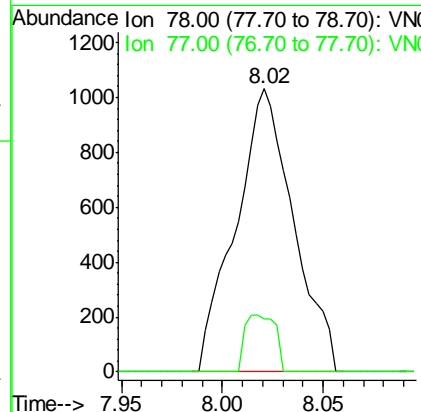
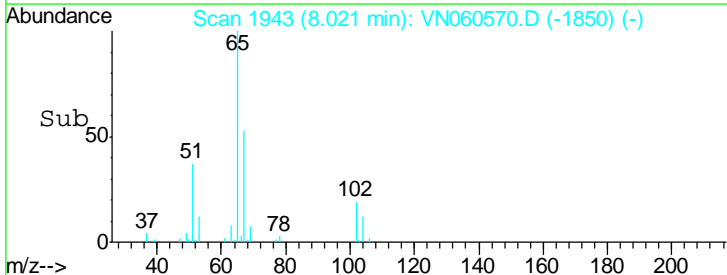
Manual Integrations
APPROVED
 MMDadoda
 3/19/2020 1:02:08 PM

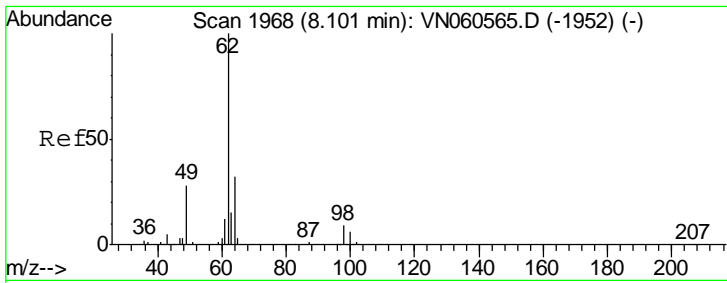


#40
 Benzene
 Concen: 0.202 ug/l
 RT: 8.02 min Scan# 1943
 Delta R.T. 0.00 min
 Lab File: VN060570.D
 Acq: 17 Mar 2020 21:51



Tgt Ion	Resp	Lower	Upper
78	100		
77	18.8	18.6	28.0



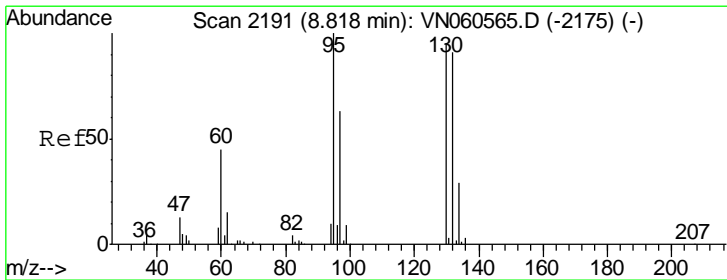
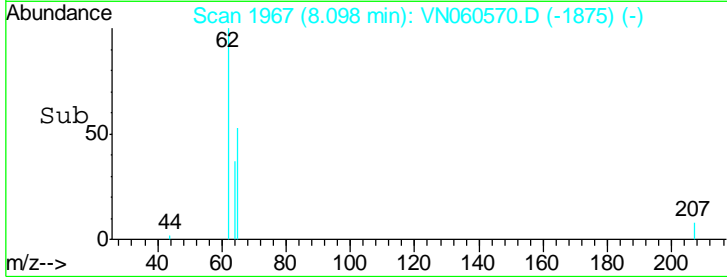
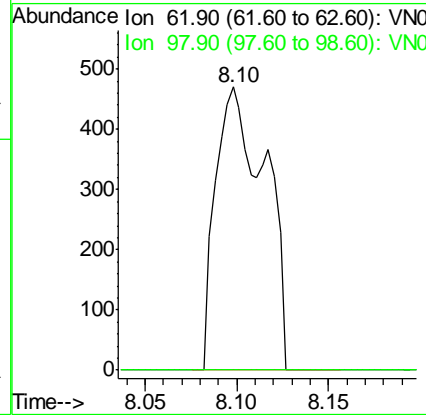
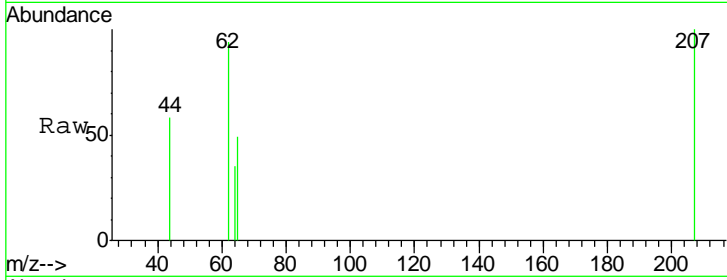


#42
 1,2-Dichloroethane
 Concen: 0.251 ug/l m
 RT: 8.10 min Scan# 1967
 Delta R.T. -0.00 min
 Lab File: VN060570.D
 Acq: 17 Mar 2020 21:51

Instrument : MSVOA_N
 ClientSampled : LOD-MDL-WATER-01-QT1-2020

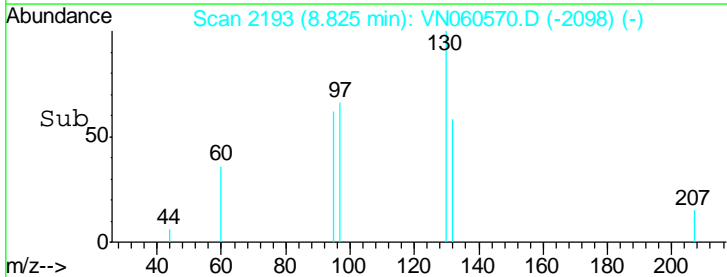
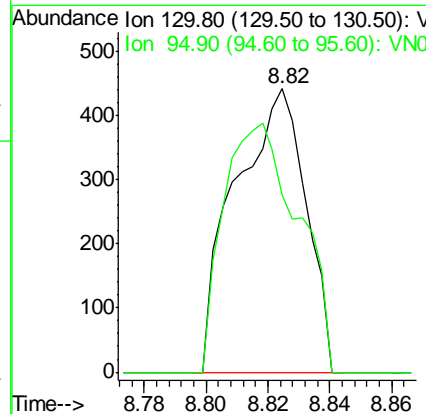
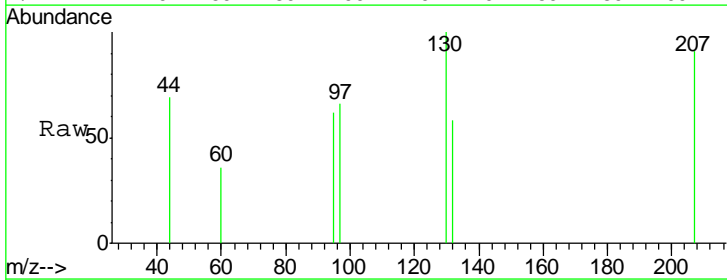
Tgt Ion	Resp	Lower	Upper
62	100	0.0	17.8
98	0.0	0.0	17.8

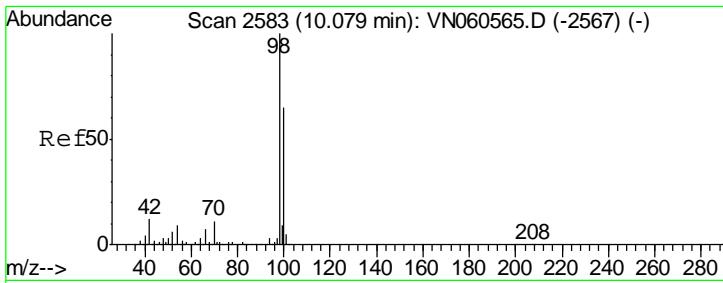
Manual Integrations
APPROVED
 MMDadoda
 3/19/2020 1:02:08 PM



#44
 Trichloroethene
 Concen: 0.271 ug/l
 RT: 8.82 min Scan# 2193
 Delta R.T. 0.01 min
 Lab File: VN060570.D
 Acq: 17 Mar 2020 21:51

Tgt Ion	Resp	Lower	Upper
130	100	0.0	211.2
95	62.4	0.0	211.2





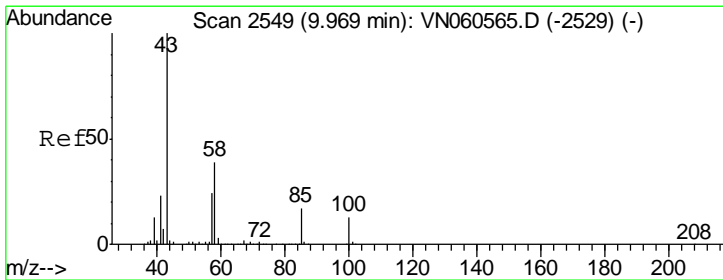
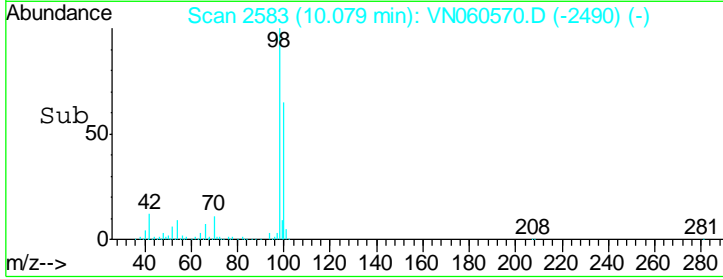
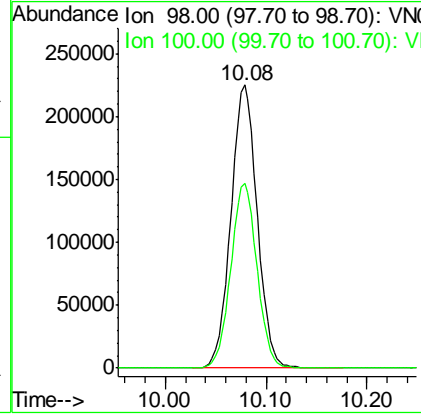
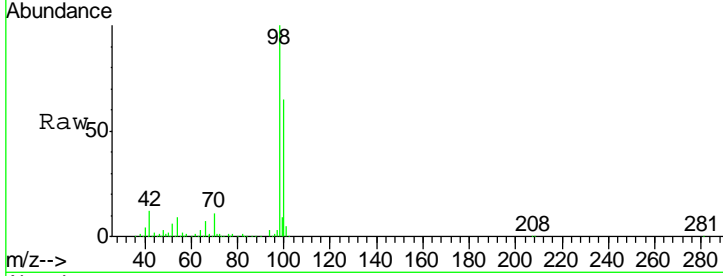
#50
 Toluene-d8
 Concen: 47.419 ug/l
 RT: 10.08 min Scan# 2583
 Delta R.T. 0.00 min
 Lab File: VN060570.D
 Acq: 17 Mar 2020 21:51

Instrument :
 MSVOA_N
ClientSampled :
 LOD-MDL-WATER-01-QT1-2020

Tgt Ion	Resp	Lower	Upper
98	100		
100	65.1	51.8	77.8

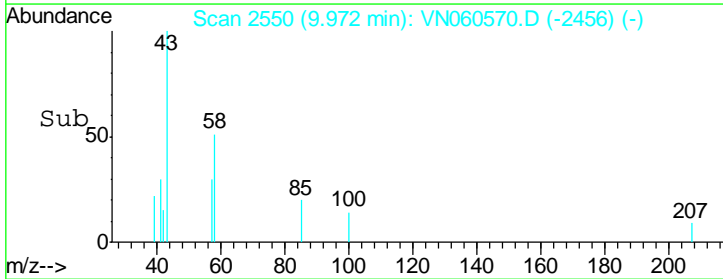
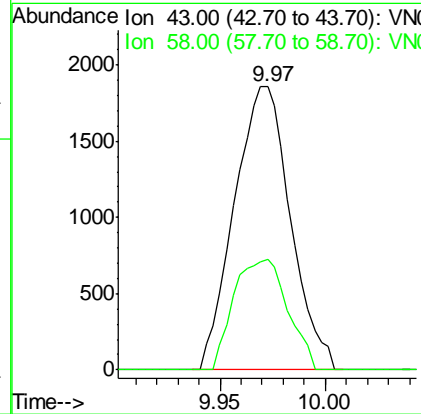
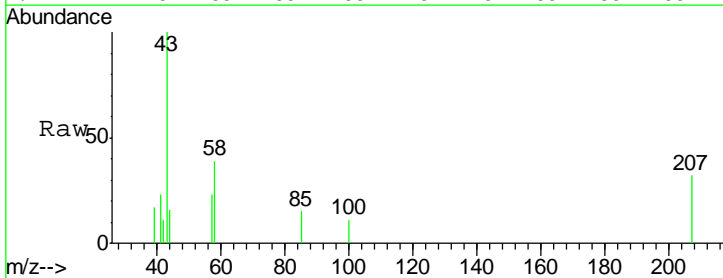
Manual Integrations
APPROVED

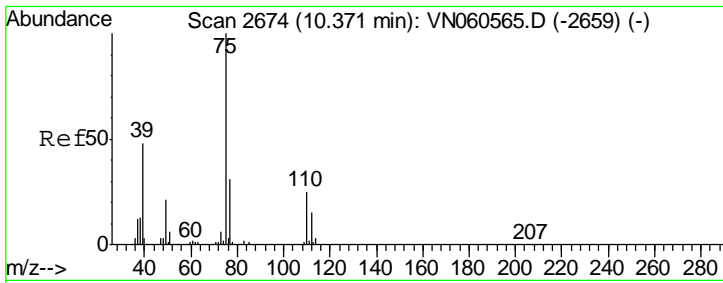
MMDadoda
 3/19/2020 1:02:08 PM



#51
 4-Methyl-2-Pentanone
 Concen: 1.003 ug/l
 RT: 9.97 min Scan# 2550
 Delta R.T. 0.00 min
 Lab File: VN060570.D
 Acq: 17 Mar 2020 21:51

Tgt Ion	Resp	Lower	Upper
43	100		
58	37.2	30.8	46.2



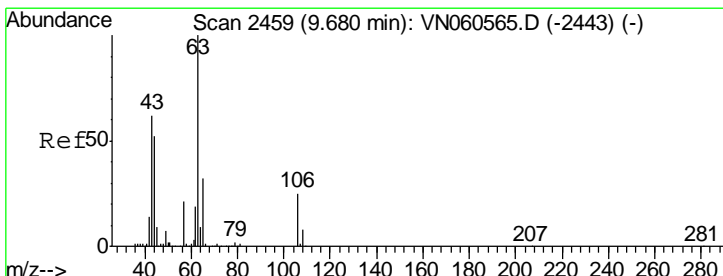
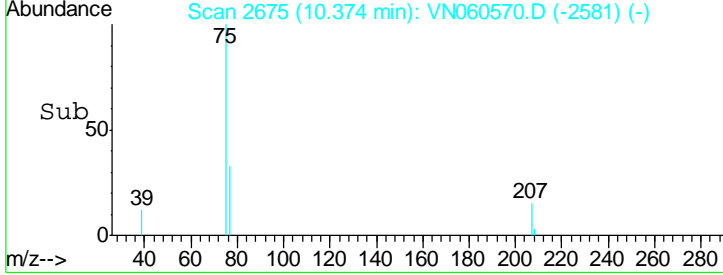
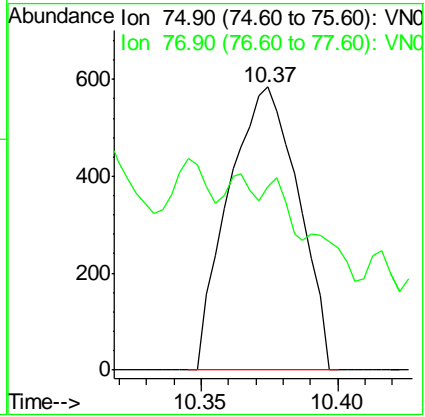
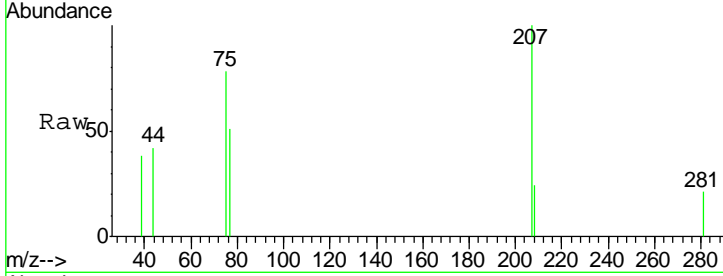


#53
 t-1,3-Dichloropropene
 Concen: 0.266 ug/l
 RT: 10.37 min Scan# 2675
 Delta R.T. 0.00 min
 Lab File: VN060570.D
 Acq: 17 Mar 2020 21:51

Instrument : MSVOA_N
 ClientSampled : LOD-MDL-WATER-01-QT1-2020

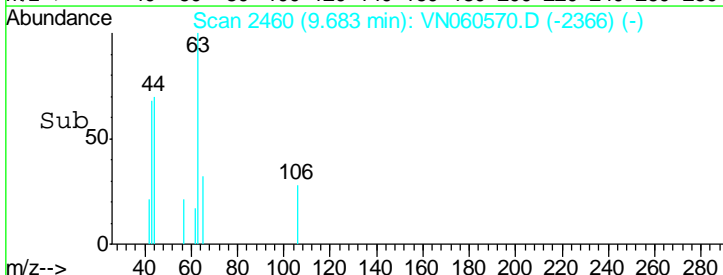
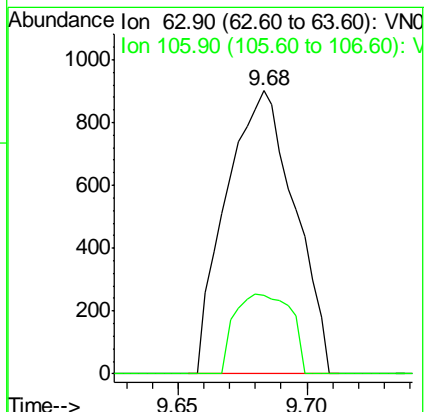
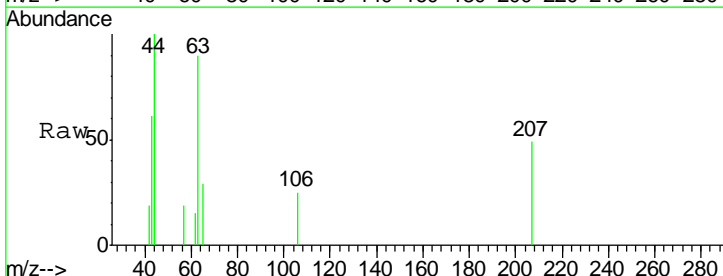
Tgt Ion	Resp	Lower	Upper
75	1036		
75	100		
77	21.6	25.1	37.7#

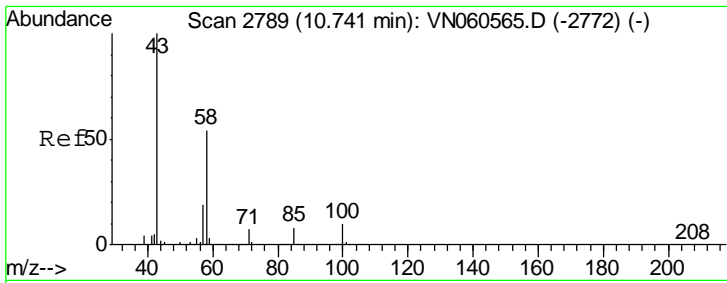
Manual Integrations
APPROVED
 MMDadoda
 3/19/2020 1:02:08 PM



#58
 2-Chloroethyl Vinyl ether
 Concen: 0.907 ug/l
 RT: 9.68 min Scan# 2460
 Delta R.T. 0.00 min
 Lab File: VN060570.D
 Acq: 17 Mar 2020 21:51

Tgt Ion	Resp	Lower	Upper
63	1668		
63	100		
106	23.1	20.0	30.0



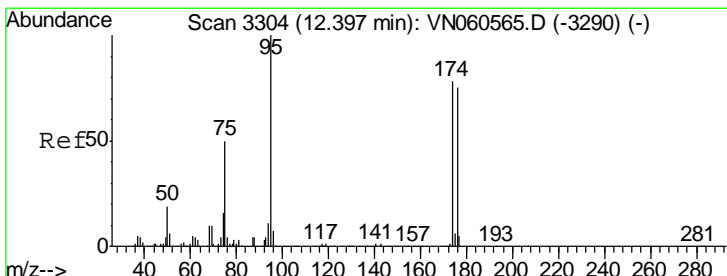
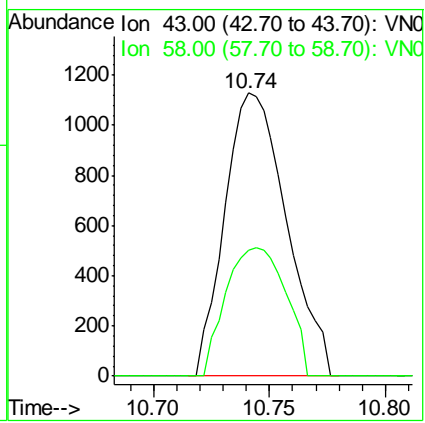
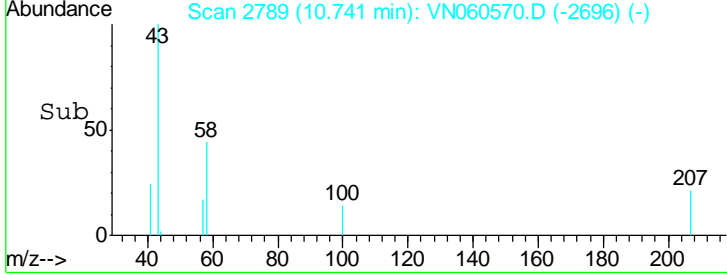
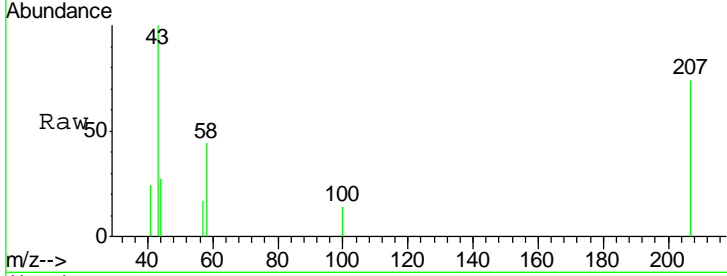


#59
 2-Hexanone
 Concen: 0.844 ug/l
 RT: 10.74 min Scan# 2789
 Delta R.T. 0.00 min
 Lab File: VN060570.D
 Acq: 17 Mar 2020 21:51

Instrument : MSVOA_N
 Client Sampled : LOD-MDL-WATER-01-QT1-2020

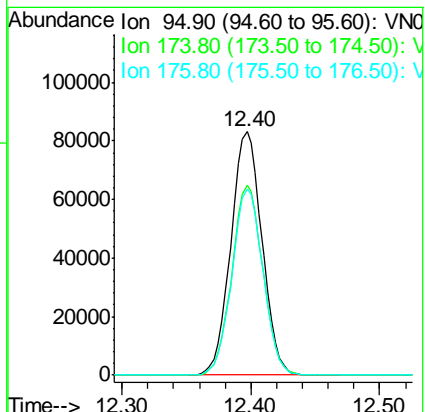
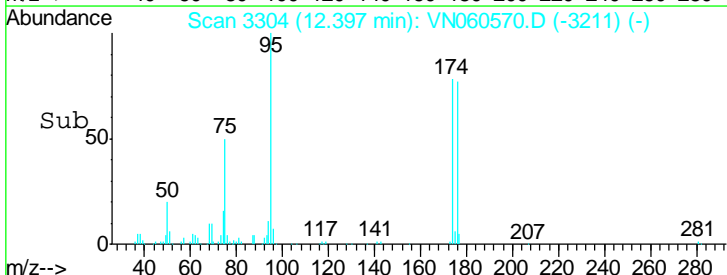
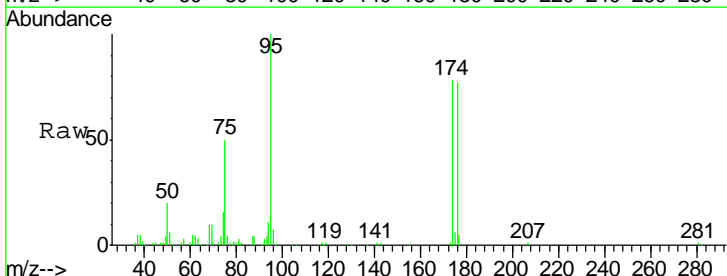
Tgt Ion	Resp	Lower	Upper
43	100		
58	44.3	26.7	80.1

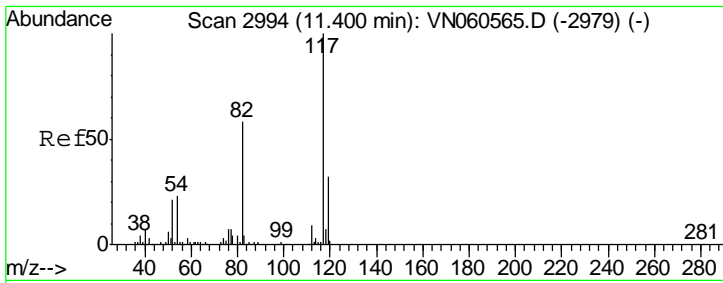
Manual Integrations
APPROVED
 MMDadoda
 3/19/2020 1:02:08 PM



#62
 4-Bromofluorobenzene
 Concen: 44.167 ug/l
 RT: 12.40 min Scan# 3304
 Delta R.T. 0.00 min
 Lab File: VN060570.D
 Acq: 17 Mar 2020 21:51

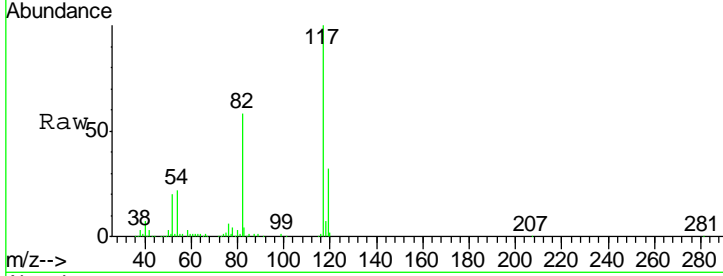
Tgt Ion	Resp	Lower	Upper
95	100		
174	77.4	0.0	157.6
176	76.2	0.0	150.6





#63
 Chlorobenzene-d5
 Concen: 50.000 ug/l
 RT: 11.40 min Scan# 2994
 Delta R.T. 0.00 min
 Lab File: VN060570.D
 Acq: 17 Mar 2020 21:51

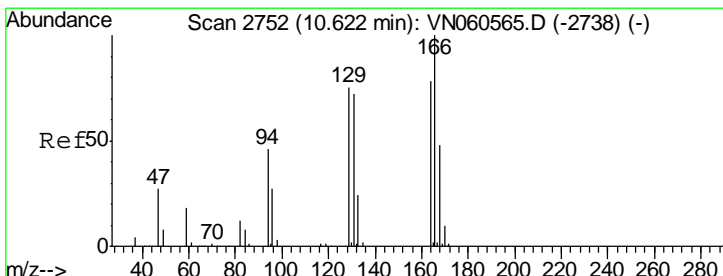
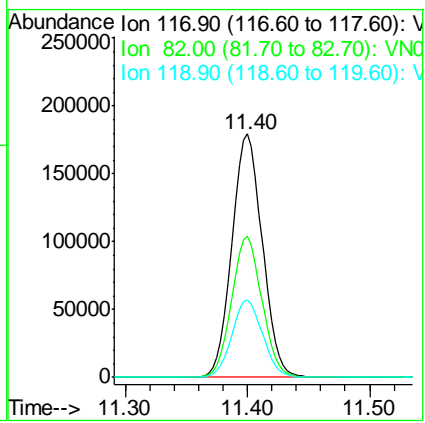
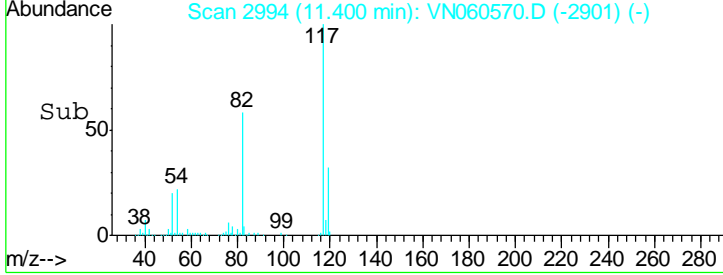
Instrument :
 MSVOA_N
ClientSampled :
 LOD-MDL-WATER-01-QT1-2020



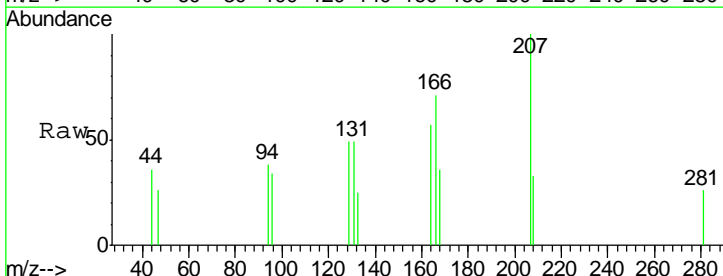
Tgt Ion: 117 Resp: 311024

Ion	Ratio	Lower	Upper
117	100		
82	57.9	46.7	70.1
119	31.7	25.5	38.3

Manual Integrations
APPROVED
 MMDadoda
 3/19/2020 1:02:08 PM

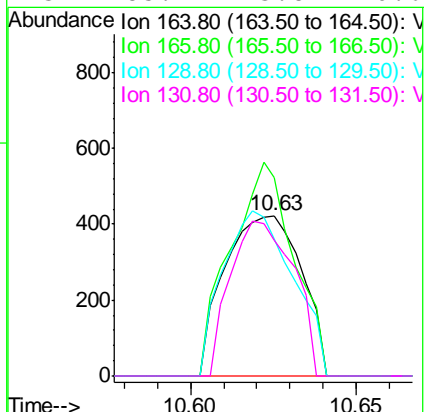
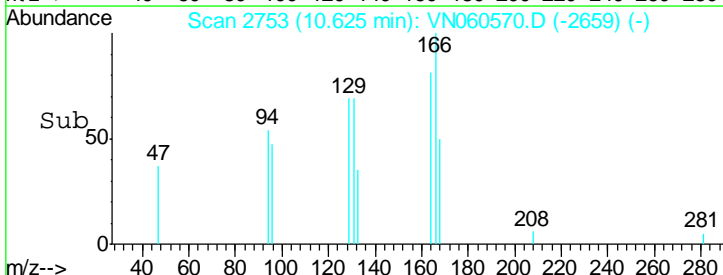


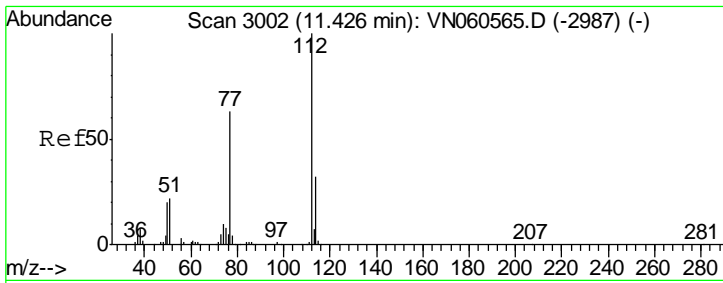
#64
 Tetrachloroethene
 Concen: 0.278 ug/l
 RT: 10.63 min Scan# 2753
 Delta R.T. 0.00 min
 Lab File: VN060570.D
 Acq: 17 Mar 2020 21:51



Tgt Ion: 164 Resp: 681

Ion	Ratio	Lower	Upper
164	100		
166	123.9	102.7	154.1
129	85.8	77.2	115.8
131	85.1	73.8	110.6





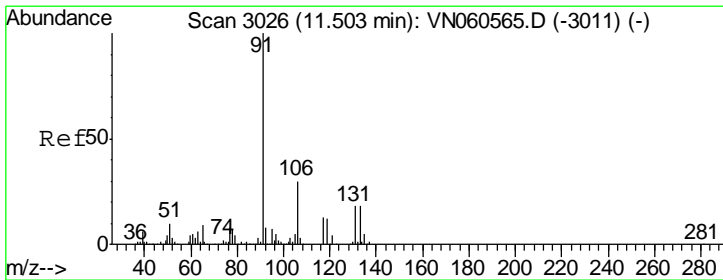
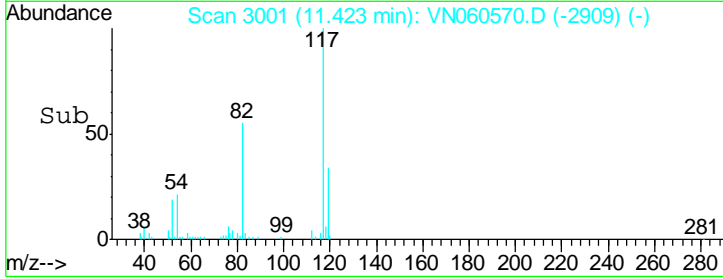
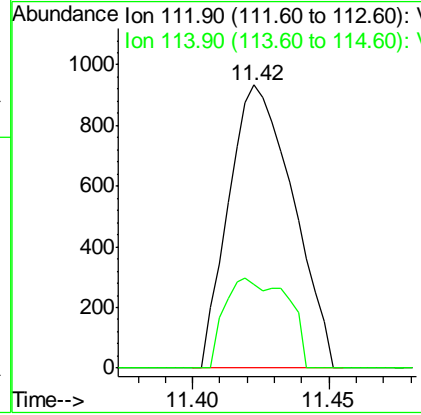
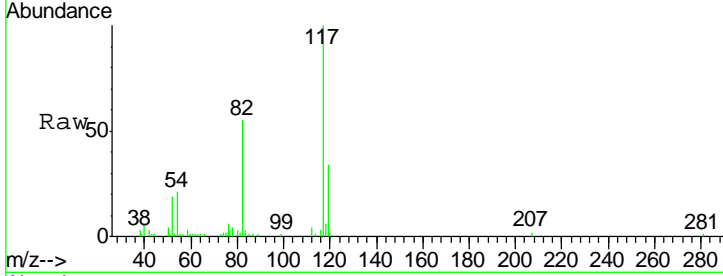
#65
 Chlorobenzene
 Concen: 0.248 ug/l
 RT: 11.42 min Scan# 3001
 Delta R.T. -0.00 min
 Lab File: VN060570.D
 Acq: 17 Mar 2020 21:51

Instrument : MSVOA_N
 ClientSampled : LOD-MDL-WATER-01-QT1-2020

Tgt Ion	Resp	Lower	Upper
112	1527		
114	29.4	25.8	38.6

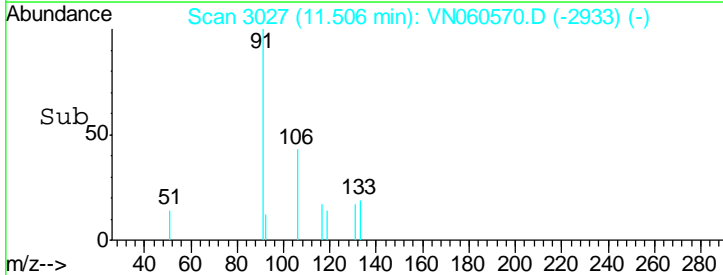
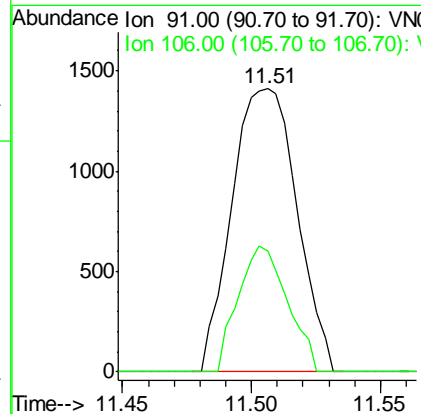
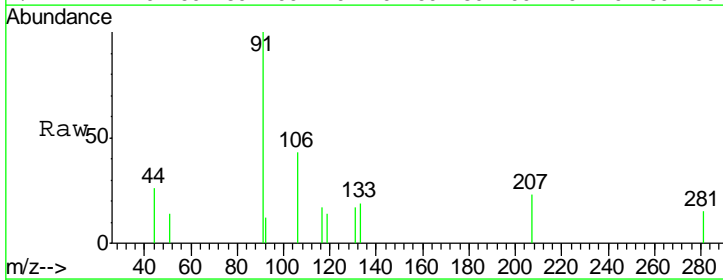
Manual Integrations
 APPROVED

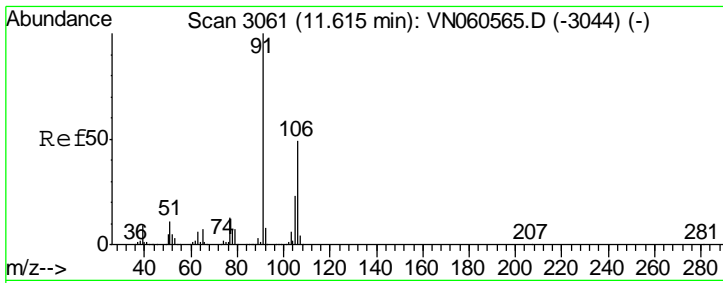
MMDadoda
 3/19/2020 1:02:08 PM



#67
 Ethyl Benzene
 Concen: 0.216 ug/l
 RT: 11.51 min Scan# 3027
 Delta R.T. 0.00 min
 Lab File: VN060570.D
 Acq: 17 Mar 2020 21:51

Tgt Ion	Resp	Lower	Upper
91	2472		
106	42.6	24.2	36.2#



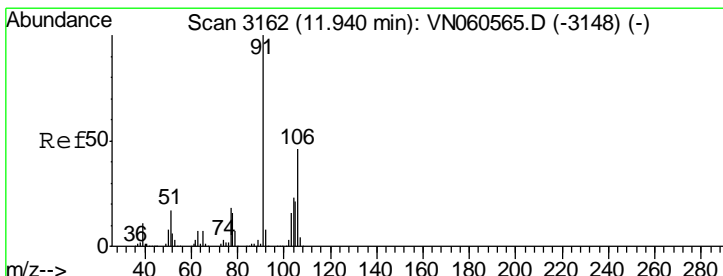
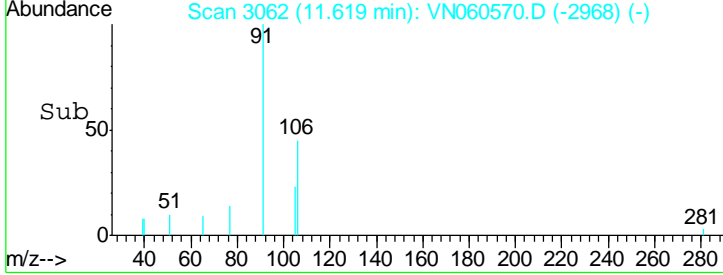
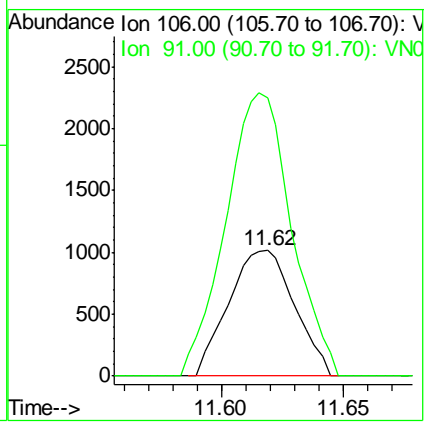
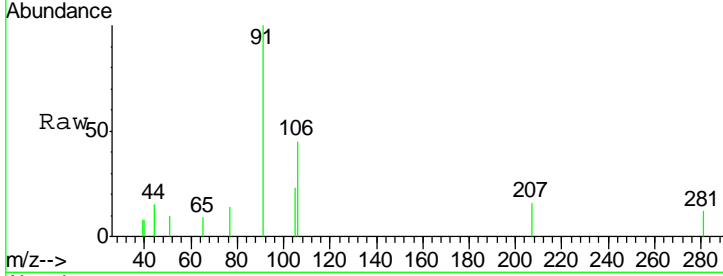


#68
 m/p-Xylenes
 Concen: 0.445 ug/l
 RT: 11.62 min Scan# 3062
 Delta R.T. 0.00 min
 Lab File: VN060570.D
 Acq: 17 Mar 2020 21:51

Instrument :
 MSVOA_N
ClientSampled :
 LOD-MDL-WATER-01-QT1-2020

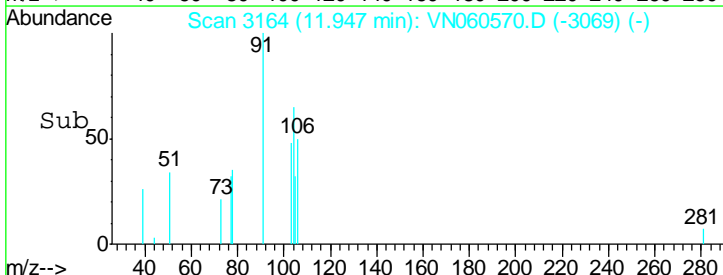
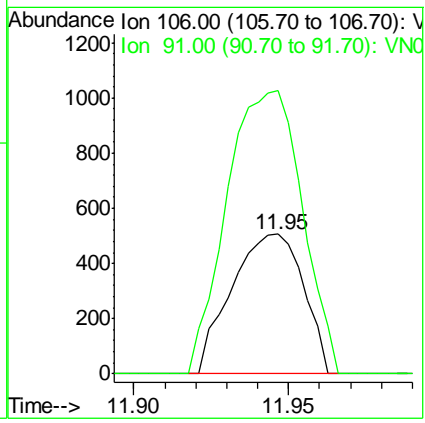
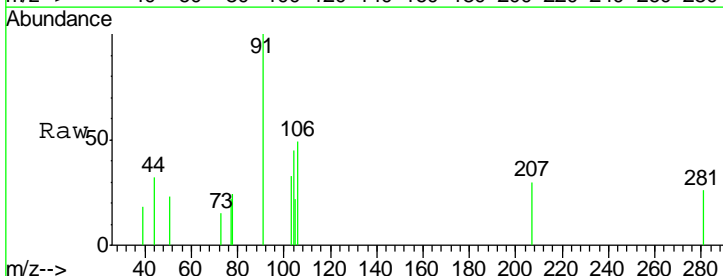
Tgt Ion	Resp	Lower	Upper
106	1895		
106	100		
91	225.4	165.0	247.4

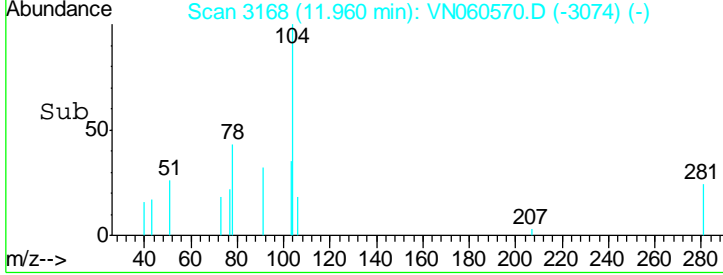
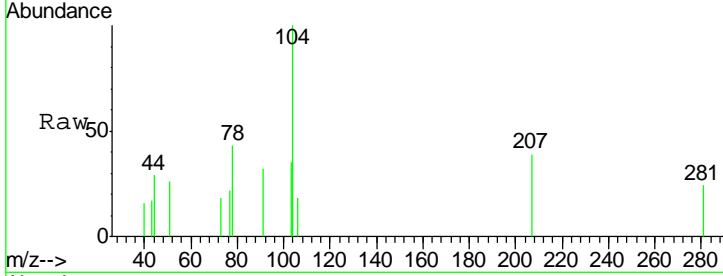
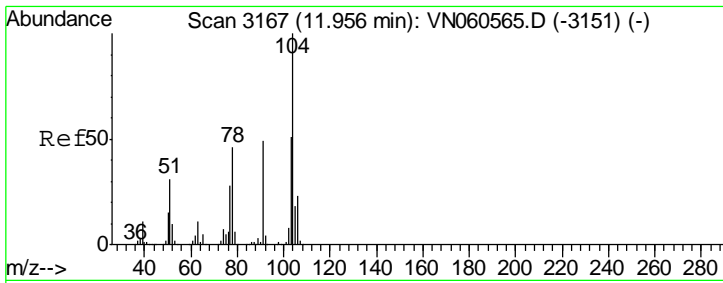
Manual Integrations
APPROVED
 MMDadoda
 3/19/2020 1:02:08 PM



#69
 o-Xylene
 Concen: 0.201 ug/l
 RT: 11.95 min Scan# 3164
 Delta R.T. 0.01 min
 Lab File: VN060570.D
 Acq: 17 Mar 2020 21:51

Tgt Ion	Resp	Lower	Upper
106	818		
106	100		
91	212.3	109.5	328.4



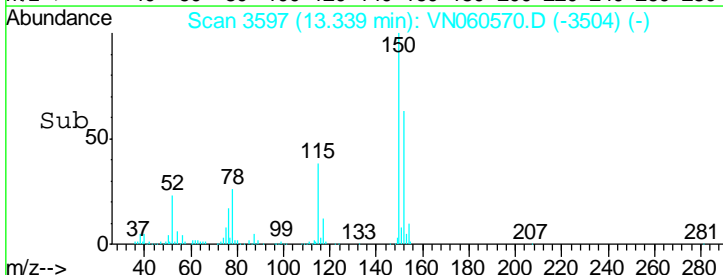
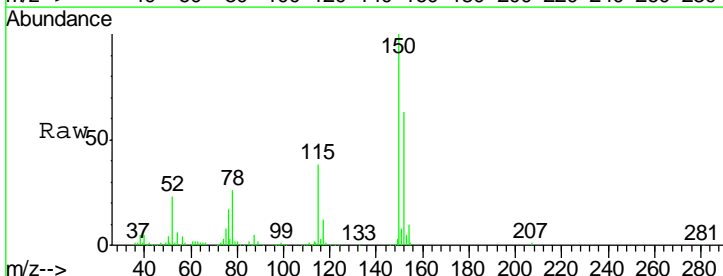
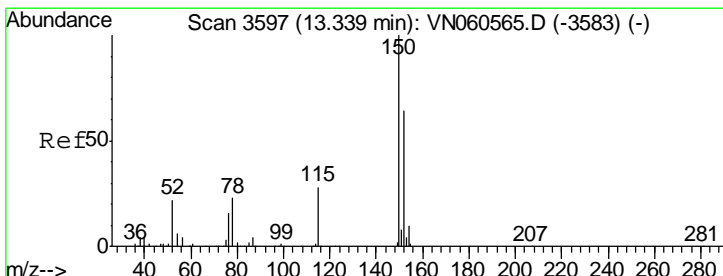
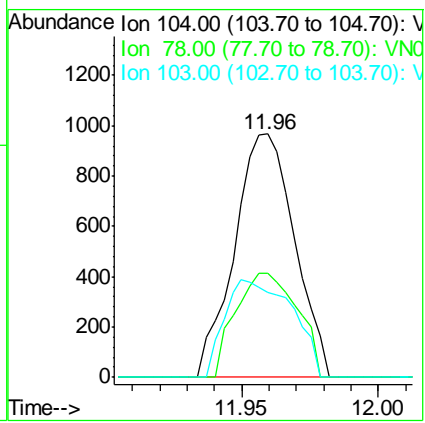


#70
 Styrene
 Concen: 0.222 ug/l
 RT: 11.96 min Scan# 3168
 Delta R.T. 0.00 min
 Lab File: VN060570.D
 Acq: 17 Mar 2020 21:51

Tgt Ion	Resp	Lower	Upper
104	1476		
78	44.1	41.2	61.8
103	45.2	44.0	66.0

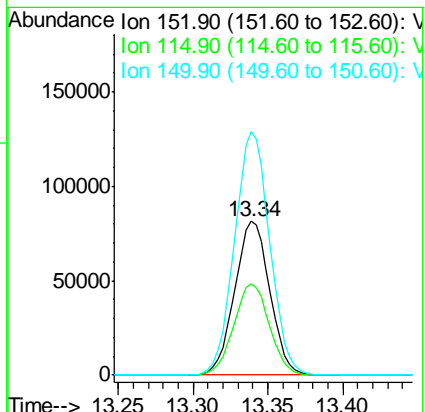
Instrument : MSVOA_N
 ClientSampled : LOD-MDL-WATER-01-QT1-2020

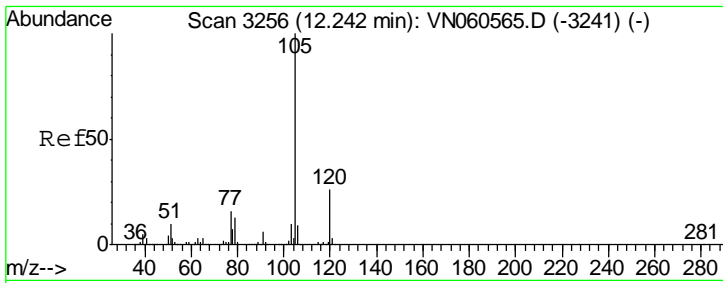
Manual Integrations
APPROVED
 MMDadoda
 3/19/2020 1:02:08 PM



#72
 1,4-Dichlorobenzene-d4
 Concen: 50.000 ug/l
 RT: 13.34 min Scan# 3597
 Delta R.T. 0.00 min
 Lab File: VN060570.D
 Acq: 17 Mar 2020 21:51

Tgt Ion	Resp	Lower	Upper
152	133094		
115	59.8	30.2	90.6
150	158.6	0.0	350.2



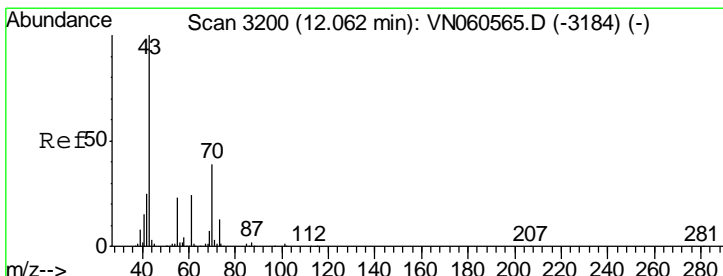
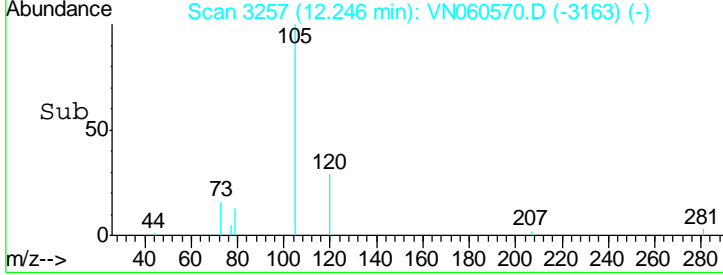
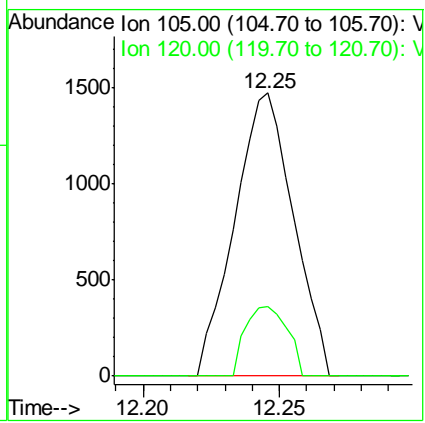
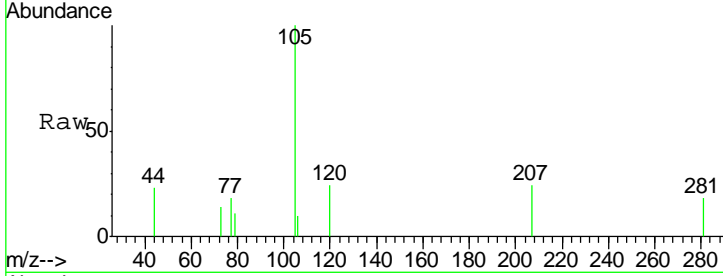


#73
 Isopropylbenzene
 Concen: 0.220 ug/l
 RT: 12.25 min Scan# 3257
 Delta R.T. 0.00 min
 Lab File: VN060570.D
 Acq: 17 Mar 2020 21:51

Instrument : MSVOA_N
 ClientSampled : LOD-MDL-WATER-01-QT1-2020

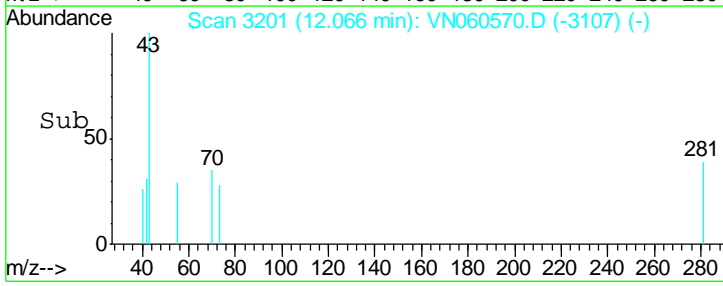
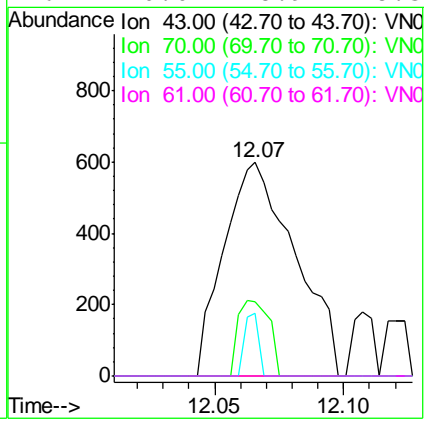
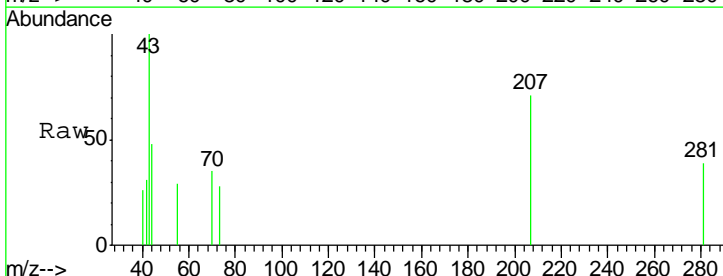
Tgt Ion	Resp	Lower	Upper
105	100		
120	17.4	13.1	39.1

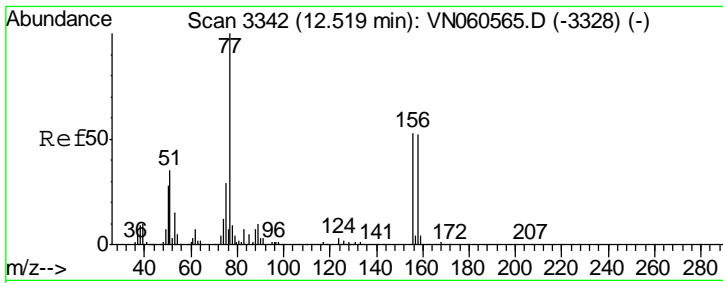
Manual Integrations APPROVED
 MMDadoda
 3/19/2020 1:02:08 PM



#74
 N-aryl acetate
 Concen: 0.249 ug/l
 RT: 12.07 min Scan# 3201
 Delta R.T. 0.00 min
 Lab File: VN060570.D
 Acq: 17 Mar 2020 21:51

Tgt Ion	Resp	Lower	Upper
43	100		
70	15.5	31.1	46.7#
55	5.7	18.6	27.8#
61	0.0	18.9	28.3#



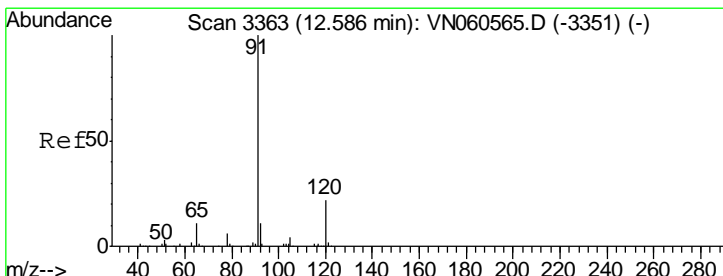
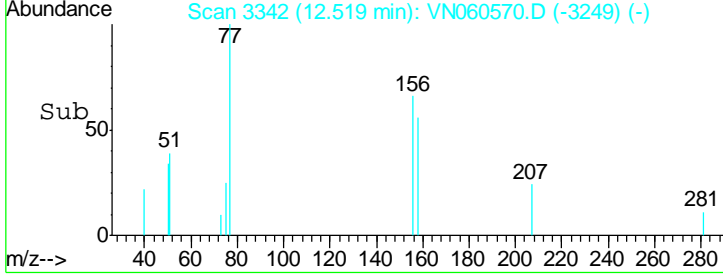
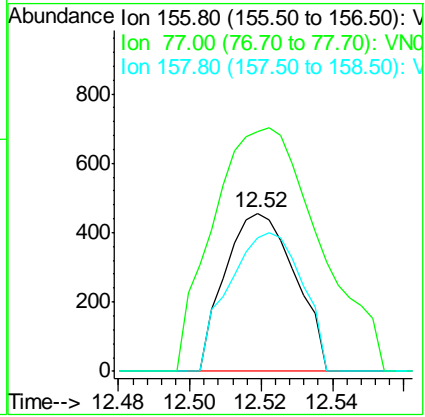
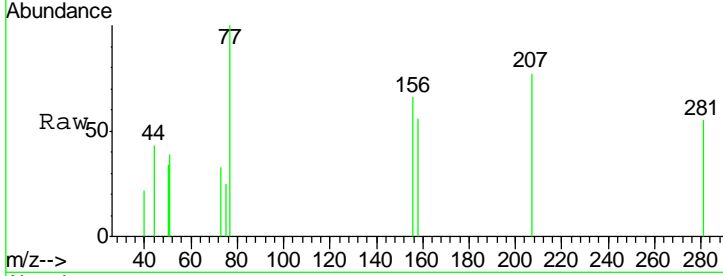


#77
 Bromobenzene
 Concen: 0.257 ug/l
 RT: 12.52 min Scan# 3342
 Delta R.T. 0.00 min
 Lab File: VN060570.D
 Acq: 17 Mar 2020 21:51

Instrument : MSVOA_N
 Client Sampled : LOD-MDL-WATER-01-QT1-2020

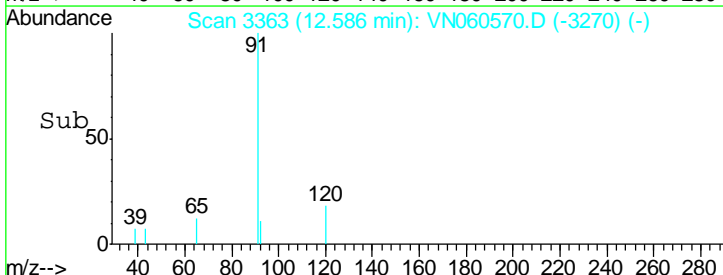
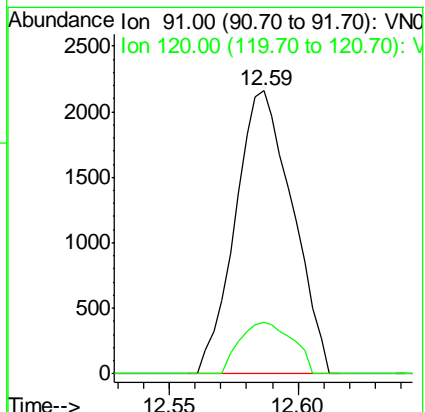
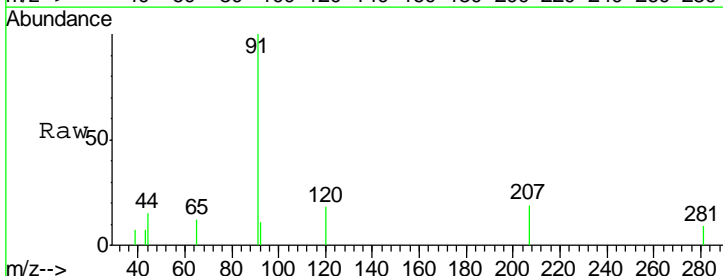
Tgt Ion	Resp	Lower	Upper
156	618		
77	233.7	112.3	337.0
158	91.9	48.6	145.8

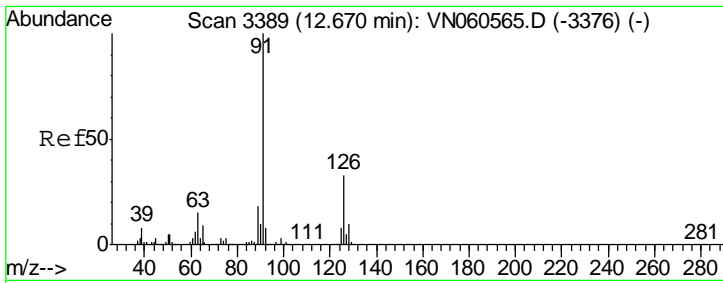
Manual Integrations
APPROVED
 MMDadoda
 3/19/2020 1:02:08 PM



#78
 n-propylbenzene
 Concen: 0.283 ug/l
 RT: 12.59 min Scan# 3363
 Delta R.T. 0.00 min
 Lab File: VN060570.D
 Acq: 17 Mar 2020 21:51

Tgt Ion	Resp	Lower	Upper
91	3342		
120	16.8	11.3	33.8



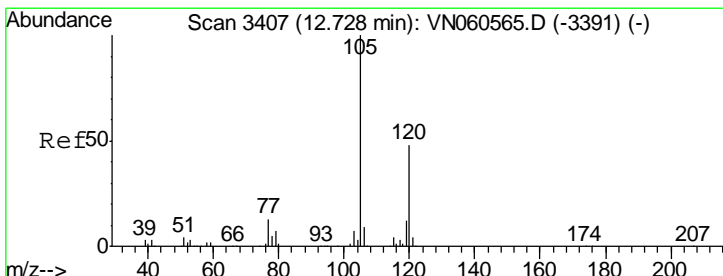
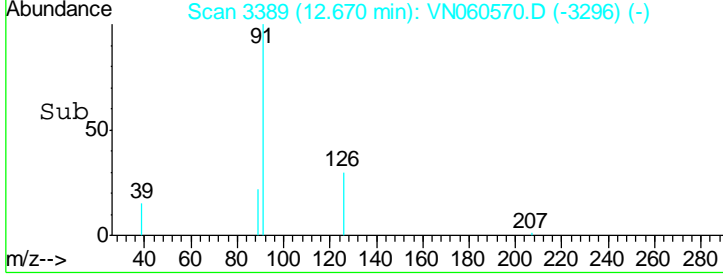
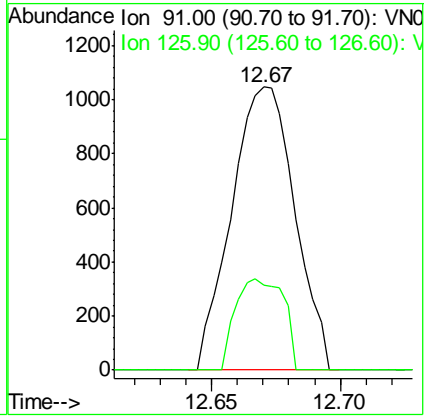
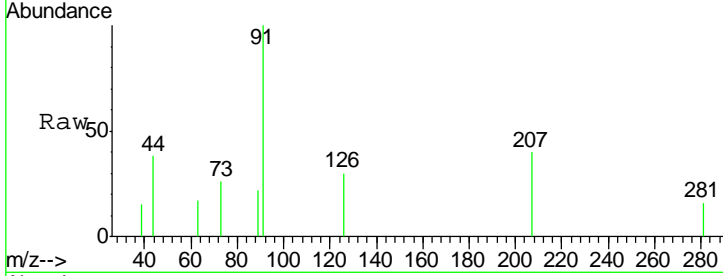


#79
 2-Chlorotoluene
 Concen: 0.254 ug/l
 RT: 12.67 min Scan# 3389
 Delta R.T. 0.00 min
 Lab File: VN060570.D
 Acq: 17 Mar 2020 21:51

Instrument : MSVOA_N
 Client Sampled : LOD-MDL-WATER-01-QT1-2020

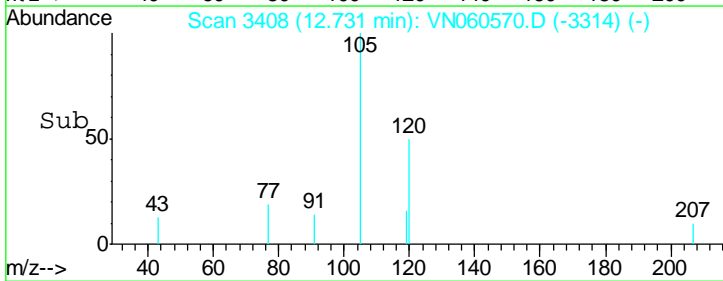
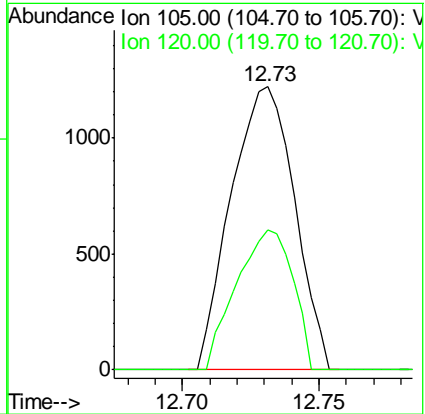
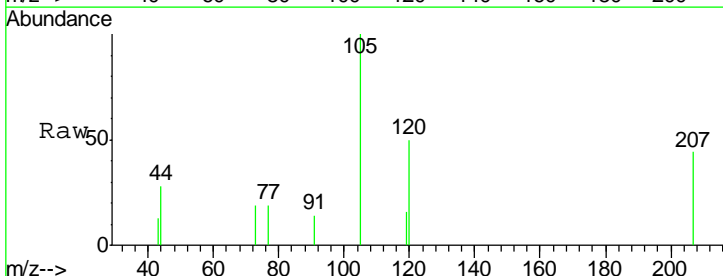
Tgt Ion	Resp	Lower	Upper
91	1792	100	
126	24.5	16.4	49.1

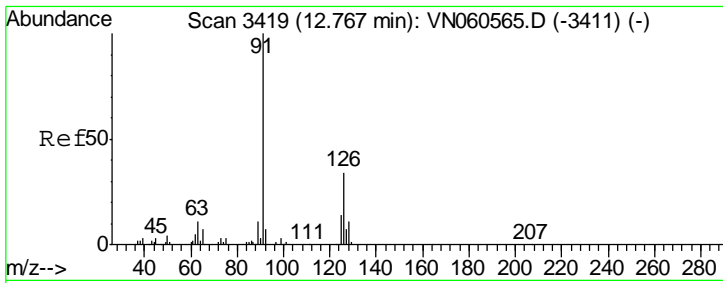
Manual Integrations
APPROVED
 MMDadoda
 3/19/2020 1:02:08 PM



#80
 1,3,5-Trimethylbenzene
 Concen: 0.233 ug/l
 RT: 12.73 min Scan# 3408
 Delta R.T. 0.00 min
 Lab File: VN060570.D
 Acq: 17 Mar 2020 21:51

Tgt Ion	Resp	Lower	Upper
105	1977	100	
120	44.0	23.9	71.7



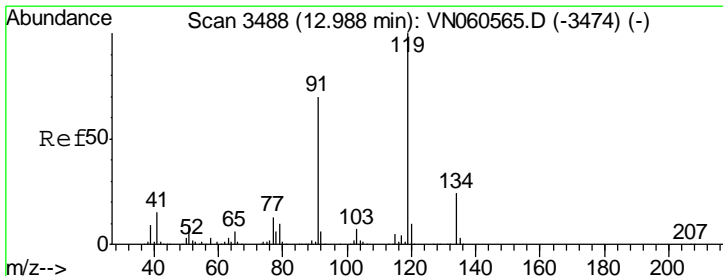
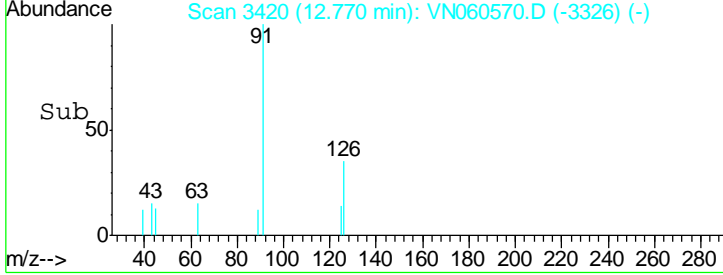
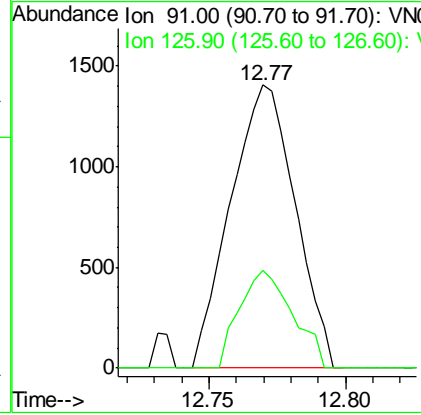
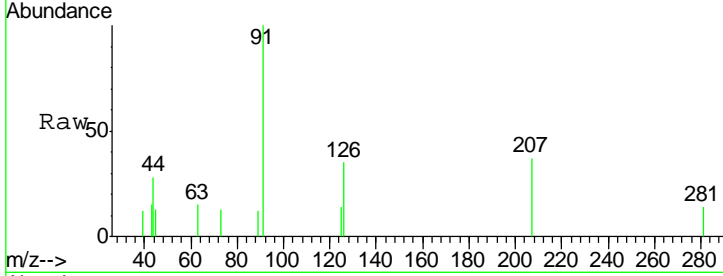


#82
 4-Chlorotoluene
 Concen: 0.322 ug/l
 RT: 12.77 min Scan# 3420
 Delta R.T. 0.00 min
 Lab File: VN060570.D
 Acq: 17 Mar 2020 21:51

Instrument : MSVOA_N
 ClientSampled : LOD-MDL-WATER-01-QT1-2020

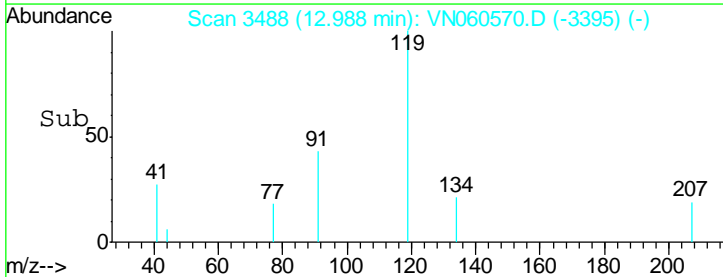
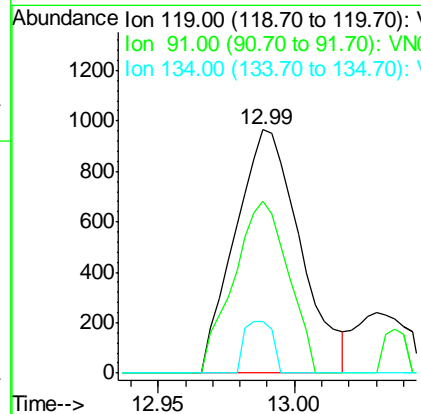
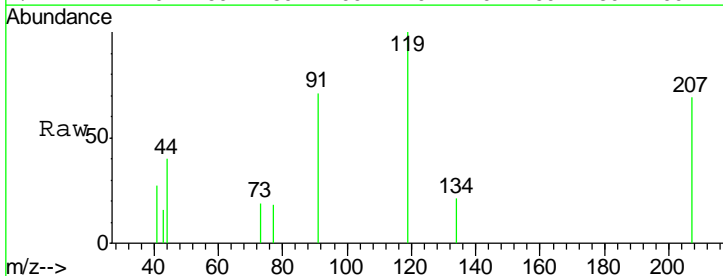
Tgt Ion	Resp	Lower	Upper
91	100		
126	28.5	16.2	48.5

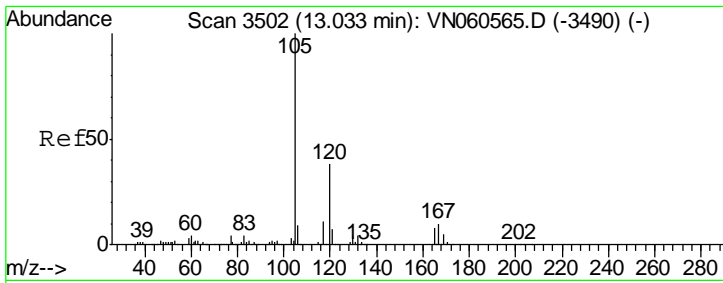
Manual Integrations
APPROVED
 MMDadoda
 3/19/2020 1:02:08 PM



#83
 tert-Butylbenzene
 Concen: 0.227 ug/l
 RT: 12.99 min Scan# 3488
 Delta R.T. 0.00 min
 Lab File: VN060570.D
 Acq: 17 Mar 2020 21:51

Tgt Ion	Resp	Lower	Upper
119	100		
91	59.2	34.0	101.8
134	9.2	12.7	38.0#





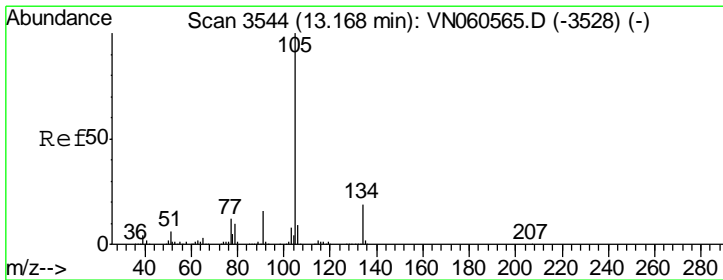
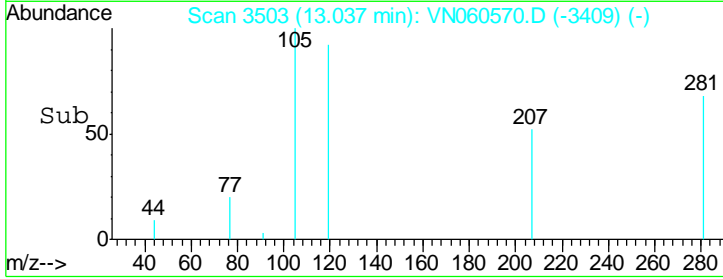
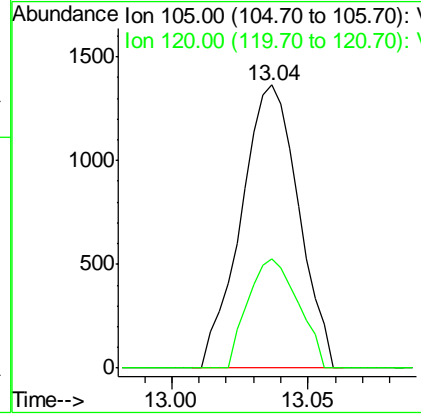
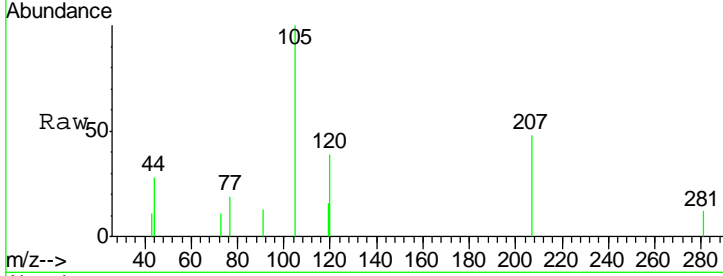
#84
 1,2,4-Trimethylbenzene
 Concen: 0.237 ug/l
 RT: 13.04 min Scan# 3503
 Delta R.T. 0.00 min
 Lab File: VN060570.D
 Acq: 17 Mar 2020 21:51

Instrument : MSVOA_N
 ClientSampled : LOD-MDL-WATER-01-QT1-2020

Tgt Ion	Resp	Lower	Upper
105	1991		
120	33.7	22.1	66.5

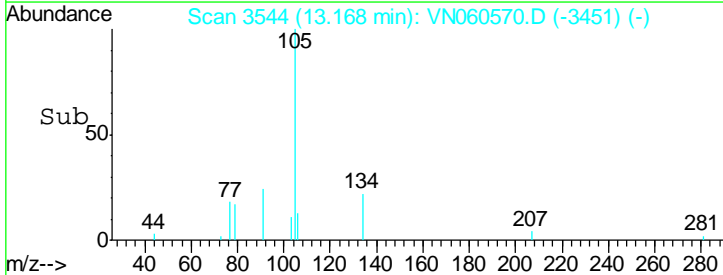
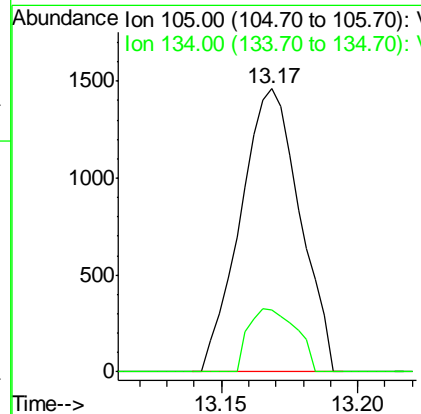
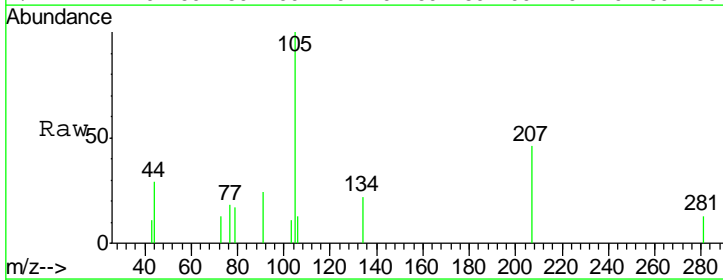
Manual Integrations
 APPROVED

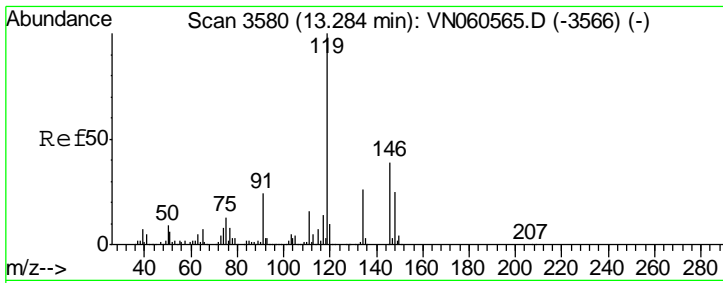
MMDadoda
 3/19/2020 1:02:08 PM



#85
 sec-Butylbenzene
 Concen: 0.233 ug/l
 RT: 13.17 min Scan# 3544
 Delta R.T. 0.00 min
 Lab File: VN060570.D
 Acq: 17 Mar 2020 21:51

Tgt Ion	Resp	Lower	Upper
105	2203		
134	18.0	9.6	28.8



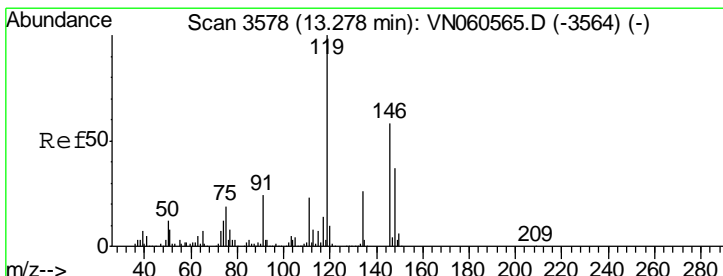
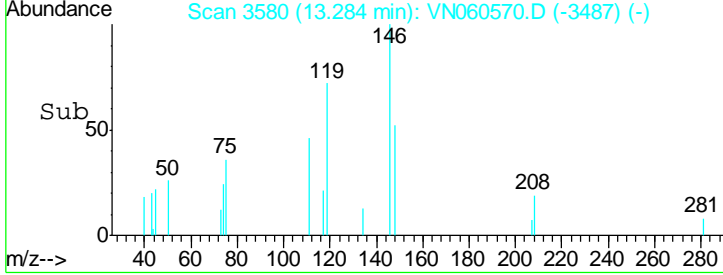
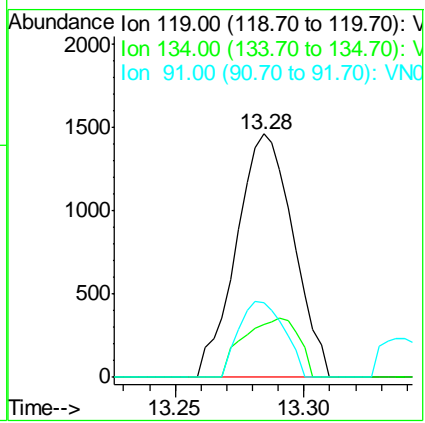
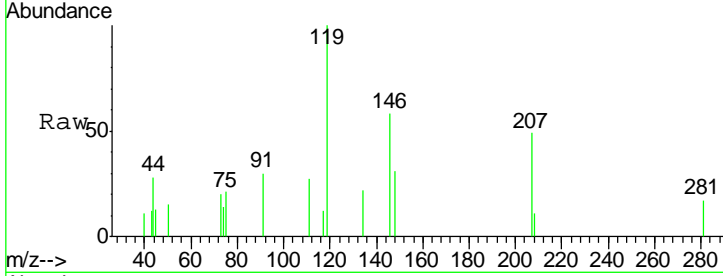


#86
 p-Isopropyltoluene
 Concen: 0.265 ug/l
 RT: 13.28 min Scan# 3580
 Delta R.T. 0.00 min
 Lab File: VN060570.D
 Acq: 17 Mar 2020 21:51

Instrument :
 MSVOA_N
ClientSampled :
 LOD-MDL-WATER-01-QT1-2020

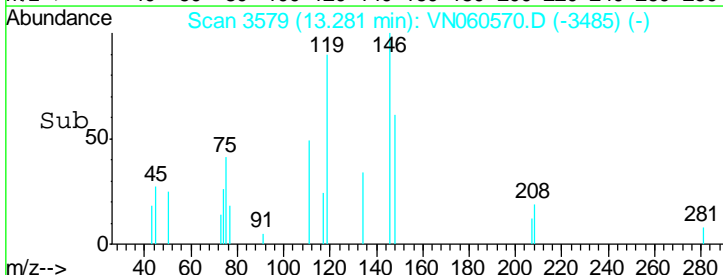
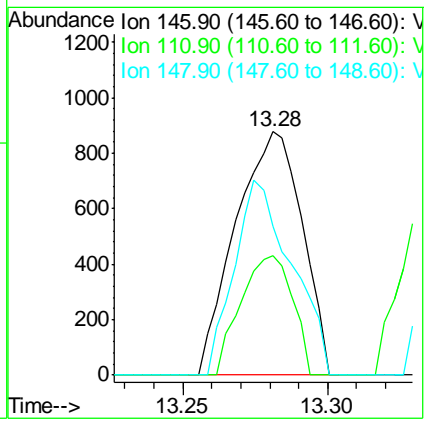
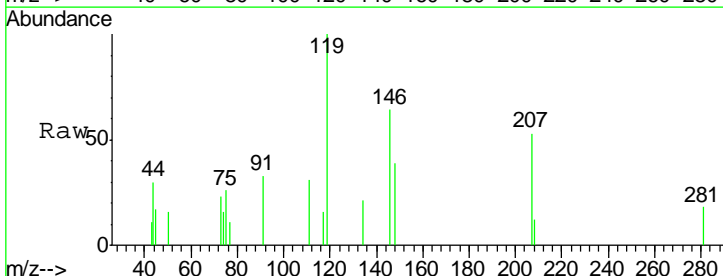
Tgt Ion	Resp	Lower	Upper
119	100		
134	23.5	13.0	39.0
91	24.9	12.0	36.0

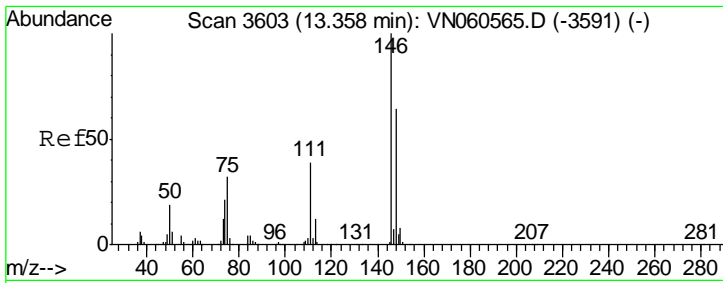
Manual Integrations
APPROVED
 MMDadoda
 3/19/2020 1:02:08 PM



#87
 1,3-Dichlorobenzene
 Concen: 0.330 ug/l
 RT: 13.28 min Scan# 3579
 Delta R.T. 0.00 min
 Lab File: VN060570.D
 Acq: 17 Mar 2020 21:51

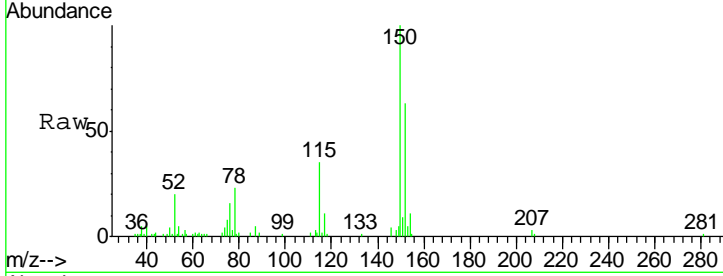
Tgt Ion	Resp	Lower	Upper
146	100		
111	38.2	20.3	60.8
148	68.9	32.5	97.4





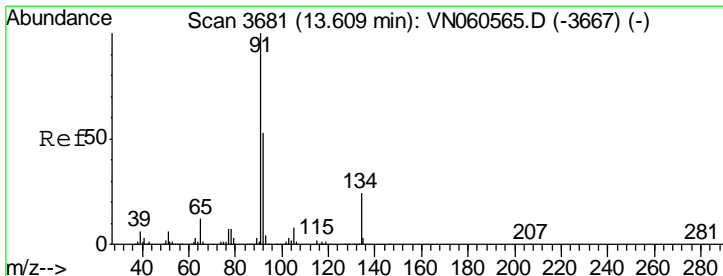
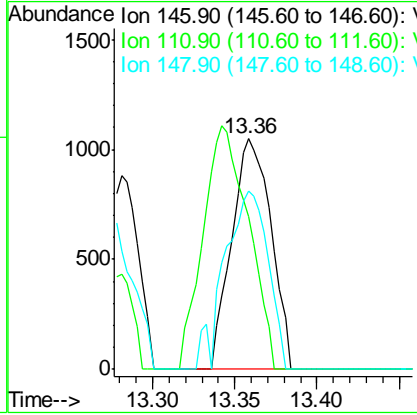
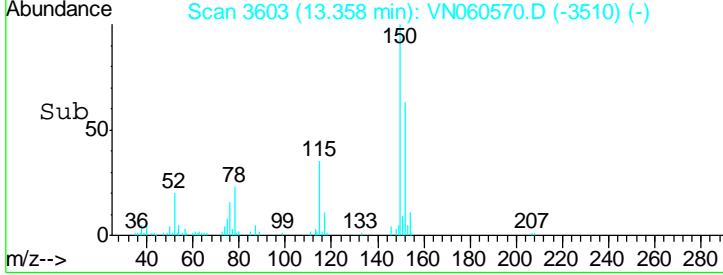
#88
 1,4-Dichlorobenzene
 Concen: 0.411 ug/l m
 RT: 13.36 min Scan# 3603
 Delta R.T. 0.00 min
 Lab File: VN060570.D
 Acq: 17 Mar 2020 21:51

Instrument :
 MSVOA_N
ClientSampled :
 LOD-MDL-WATER-01-QT1-2020

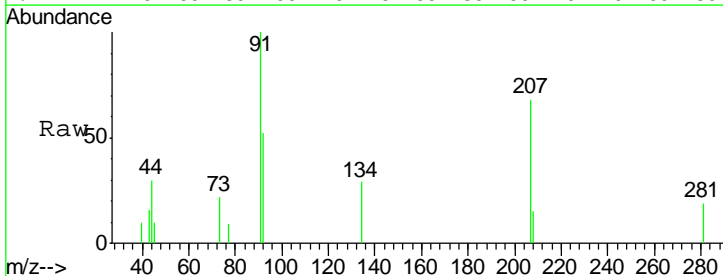


Tgt Ion	Resp	Lower	Upper
146	1753		
146	100		
111	30.5	19.6	58.7
148	55.0	32.1	96.3

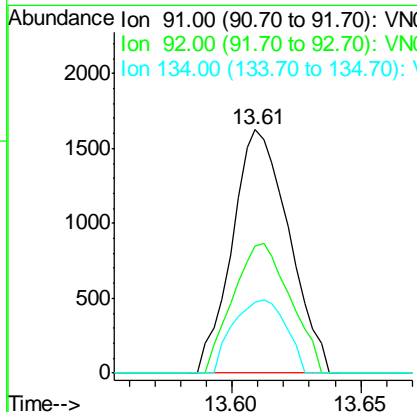
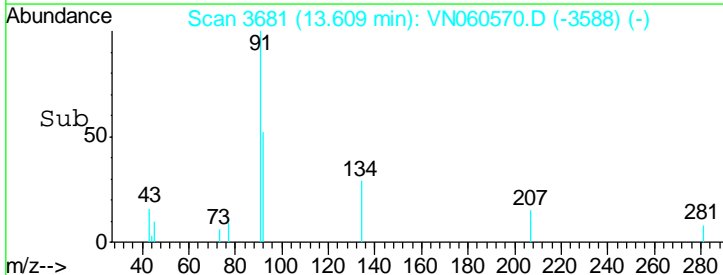
Manual Integrations
APPROVED
 MMDadoda
 3/19/2020 1:02:08 PM

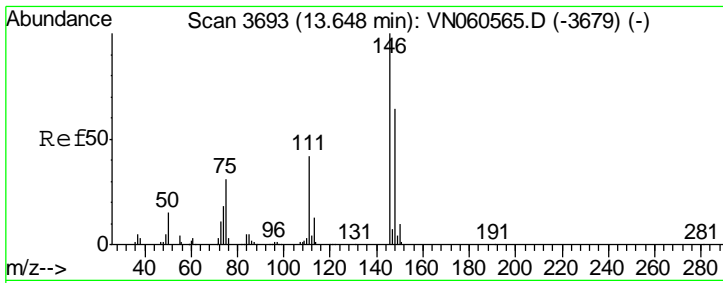


#89
 n-Butylbenzene
 Concen: 0.325 ug/l
 RT: 13.61 min Scan# 3681
 Delta R.T. 0.00 min
 Lab File: VN060570.D
 Acq: 17 Mar 2020 21:51



Tgt Ion	Resp	Lower	Upper
91	2491		
91	100		
92	53.8	26.2	78.5
134	28.0	12.3	36.9





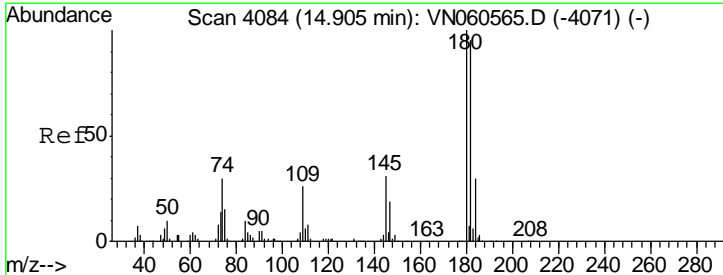
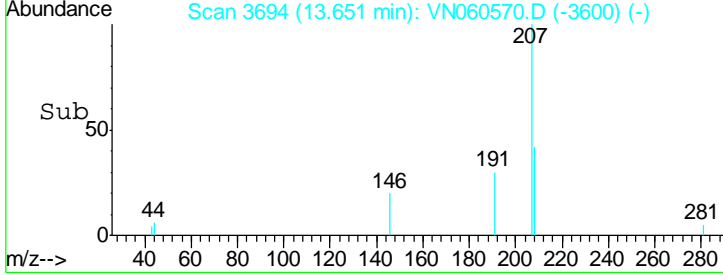
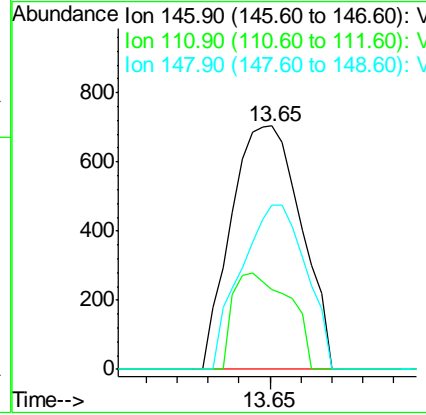
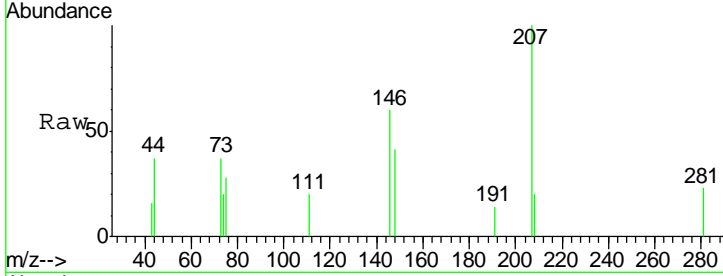
#91
 1,2-Dichlorobenzene
 Concen: 0.273 ug/l
 RT: 13.65 min Scan# 3694
 Delta R.T. 0.00 min
 Lab File: VN060570.D
 Acq: 17 Mar 2020 21:51

Instrument : MSVOA_N
 Client Sampled : LOD-MDL-WATER-01-QT1-2020

Tgt Ion	Resp	Lower	Upper
146	1107		
146	100		
111	31.9	21.0	63.0
148	63.0	31.9	95.5

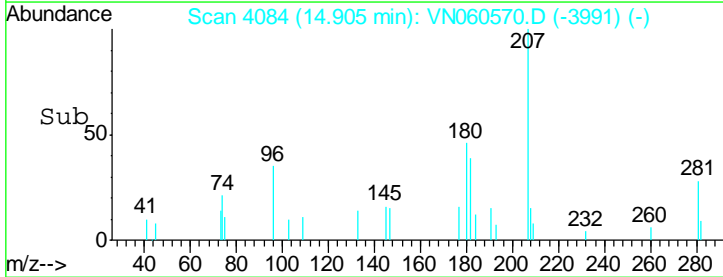
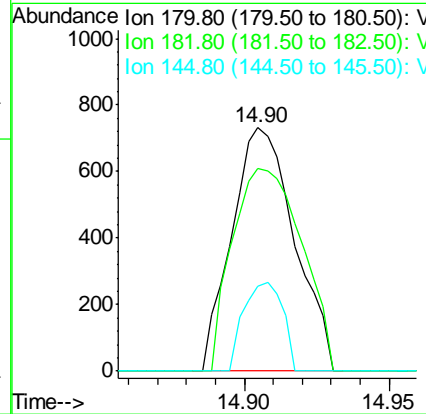
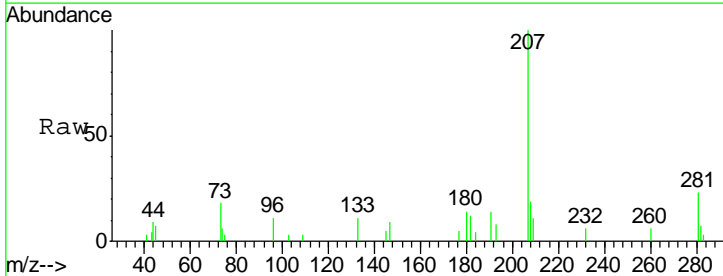
Manual Integrations
 APPROVED

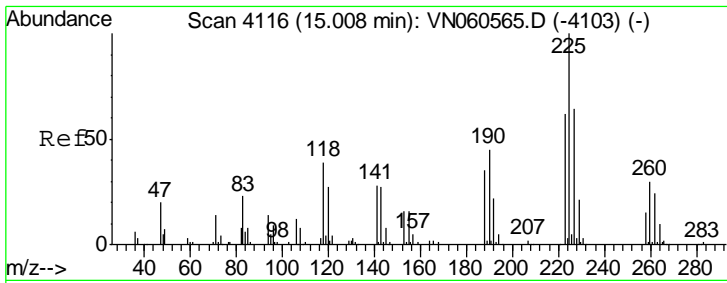
MMDadoda
 3/19/2020 1:02:08 PM



#93
 1,2,4-Trichlorobenzene
 Concen: 0.441 ug/l
 RT: 14.90 min Scan# 4084
 Delta R.T. 0.00 min
 Lab File: VN060570.D
 Acq: 17 Mar 2020 21:51

Tgt Ion	Resp	Lower	Upper
180	1100		
180	100		
182	92.1	47.9	143.8
145	22.8	15.4	46.2





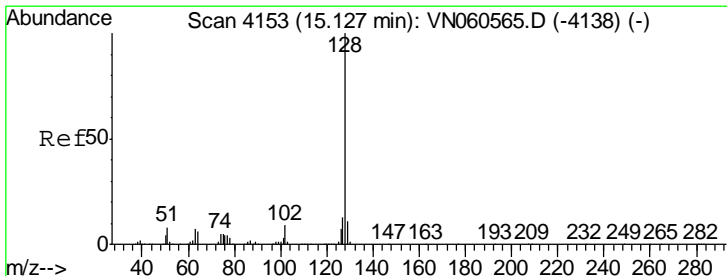
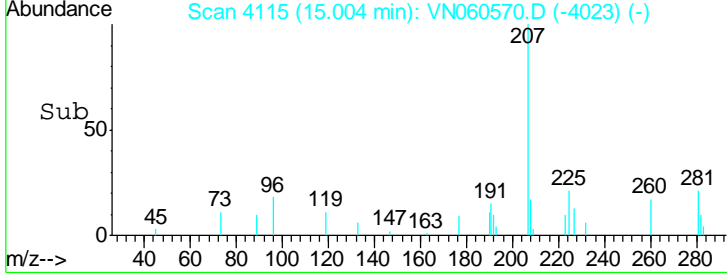
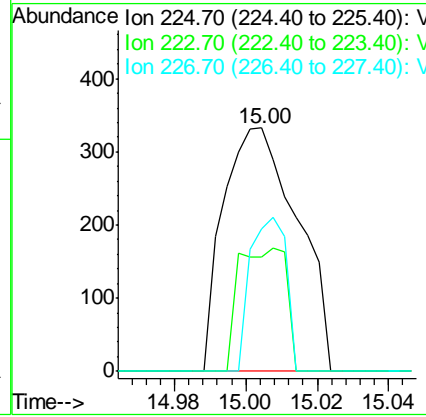
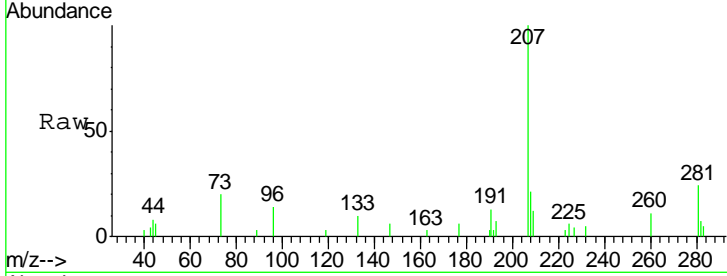
#94
 Hexachlorobutadiene
 Concen: 0.390 ug/l
 RT: 15.00 min Scan# 4115
 Delta R.T. -0.00 min
 Lab File: VN060570.D
 Acq: 17 Mar 2020 21:51

Instrument :
 MSVOA_N
ClientSampled :
 LOD-MDL-WATER-01-QT1-2020

Tgt Ion	Resp	Lower	Upper
225	100		
223	32.7	31.6	95.0
227	30.6	32.3	96.8#

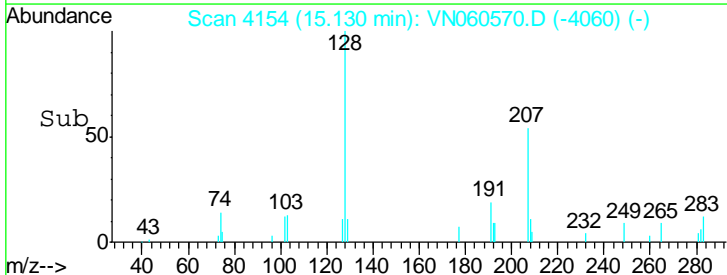
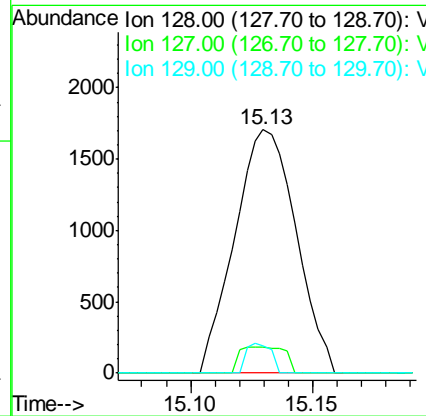
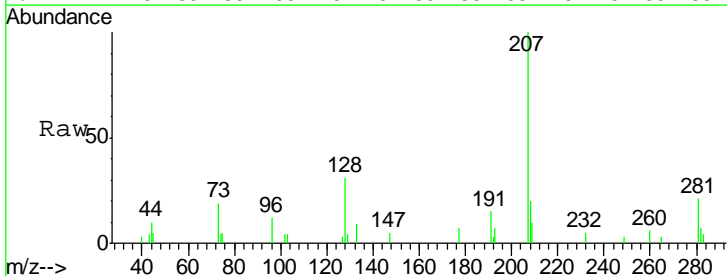
Manual Integrations
APPROVED

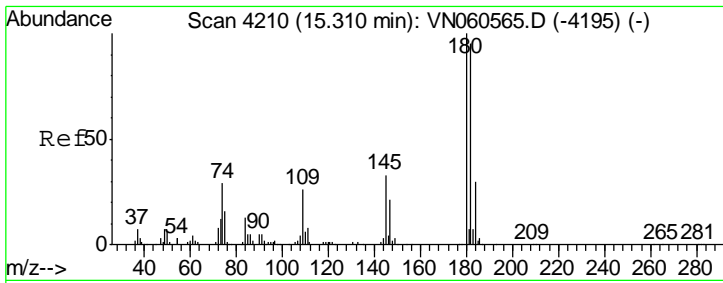
MMDadoda
 3/19/2020 1:02:08 PM



#95
 Naphthalene
 Concen: 0.396 ug/l
 RT: 15.13 min Scan# 4154
 Delta R.T. 0.00 min
 Lab File: VN060570.D
 Acq: 17 Mar 2020 21:51

Tgt Ion	Resp	Lower	Upper
128	100		
127	7.9	10.2	15.2#
129	4.9	8.8	13.2#





#96
 1,2,3-Trichlorobenzene
 Concen: 0.391 ug/l
 RT: 15.31 min Scan# 4211
 Delta R.T. 0.00 min
 Lab File: VN060570.D
 Acq: 17 Mar 2020 21:51

Instrument :
 MSVOA_N
ClientSampled :
 LOD-MDL-WATER-01-QT1-2020

Tot Ion	Ratio	Lower	Upper
180	100		
182	93.1	47.5	142.6
145	28.7	16.3	48.8

Manual Integrations
APPROVED
 MMDadoda
 3/19/2020 1:02:08 PM

