

Data Path : Z:\VOASRV\HPCHEM1\MSVOA N\DATA\VN031820\
 Data File : VN060615.D
 Acq On : 19 Mar 2020 1:06
 Operator : JC/MD
 Sample : PB127624ZHE#09
 Misc : 5.00mL/MSVOA N/WATER
 ALS Vial : 42 Sample Multiplier: 1

Instrument :
 MSVOA_N
 ClientSampleId :
 PB127624ZHE#09

Quant Time: Mar 19 08:53:41 2020
 Quant Method : Z:\VOASRV\HPCHEM1\MSVOA_N\METHODS\82N031820W.M
 Quant Title : SW846 8260
 QLast Update : Wed Mar 18 08:49:09 2020
 Response via : Initial Calibration

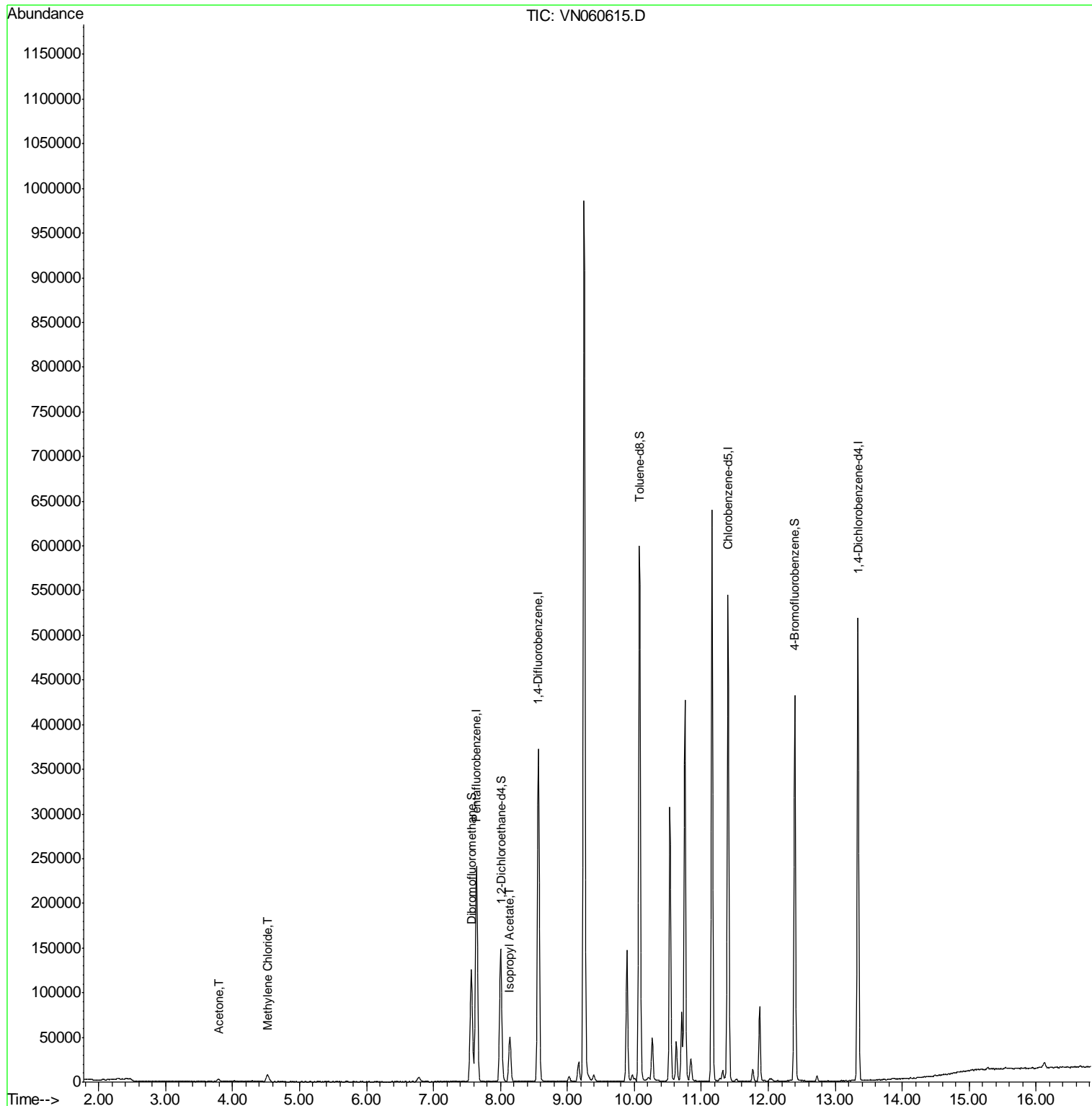
Internal Standards	R.T.	QIon	Response	Conc	Units	Dev(Min)
1) Pentafluorobenzene	7.64	168	199838	50.00	ug/l	0.00
34) 1,4-Difluorobenzene	8.57	114	330465	50.00	ug/l	0.00
63) Chlorobenzene-d5	11.40	117	307203	50.00	ug/l	0.00
72) 1,4-Dichlorobenzene-d4	13.34	152	138624	50.00	ug/l	0.00
System Monitoring Compounds						
33) 1,2-Dichloroethane-d4	8.00	65	129146	47.08	ug/l	0.00
Spiked Amount	50.000		Recovery	=	94.16%	
35) Dibromofluoromethane	7.56	113	96991	48.54	ug/l	0.00
Spiked Amount	50.000		Recovery	=	97.08%	
50) Toluene-d8	10.08	98	406582	49.81	ug/l	0.00
Spiked Amount	50.000		Recovery	=	99.62%	
62) 4-Bromofluorobenzene	12.40	95	150582	50.34	ug/l	0.00
Spiked Amount	50.000		Recovery	=	100.68%	
Target Compounds						
16) Acetone	3.79	43	5854	6.024	ug/l	93
20) Methylene Chloride	4.52	84	5823	2.436	ug/l	97
43) Isopropyl Acetate	8.14	43	61689	10.818	ug/l #	91

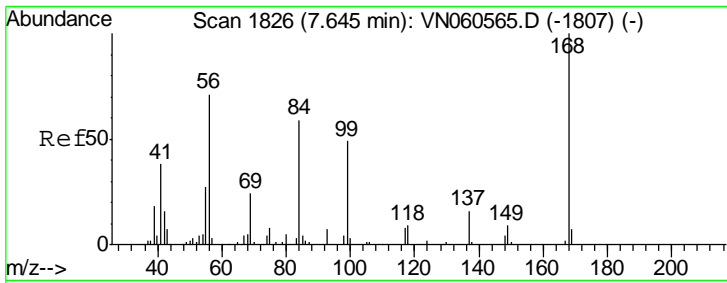
(#) = qualifier out of range (m) = manual integration (+) = signals summed

Data Path : Z:\VOASRV\HPCHEM1\MSVOA N\DATA\VN031820\
 Data File : VN060615.D
 Acq On : 19 Mar 2020 1:06
 Operator : JC/MD
 Sample : PB127624ZHE#09
 Misc : 5.00mL/MSVOA N/WATER
 ALS Vial : 42 Sample Multiplier: 1

Instrument :
 MSVOA_N
 ClientSampleId :
 PB127624ZHE#09

Quant Time: Mar 19 08:53:41 2020
 Quant Method : Z:\VOASRV\HPCHEM1\MSVOA_N\METHODS\82N031820W.M
 Quant Title : SW846 8260
 QLast Update : Wed Mar 18 08:49:09 2020
 Response via : Initial Calibration

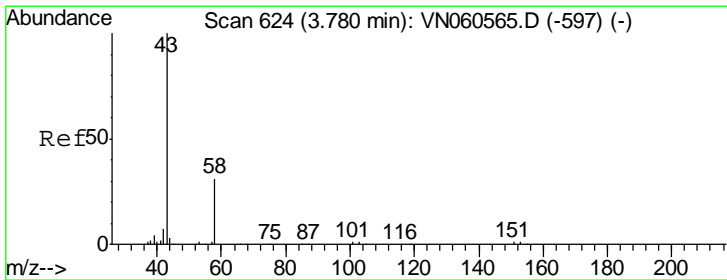
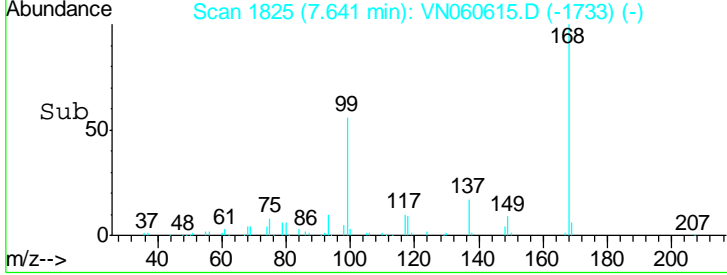
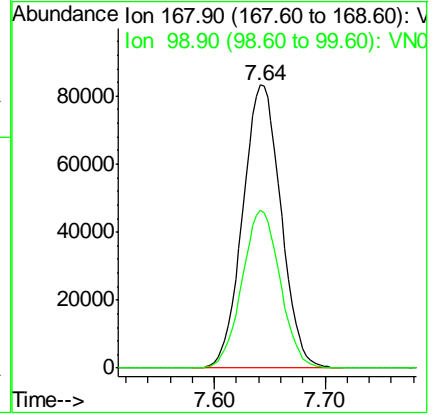
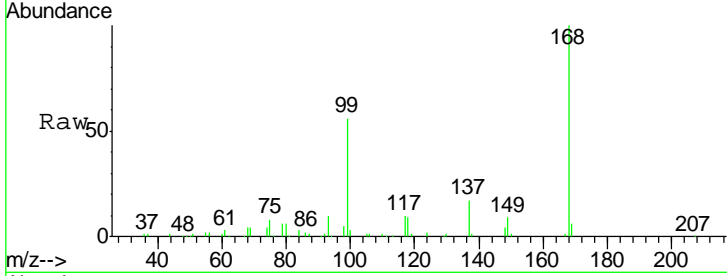




#1
 Pentafluorobenzene
 Concen: 50.000 ug/l
 RT: 7.64 min Scan# 1825
 Delta R.T. -0.00 min
 Lab File: VN060615.D
 Acq: 19 Mar 2020 1:06

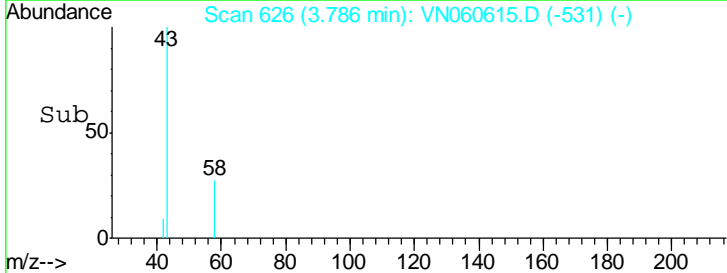
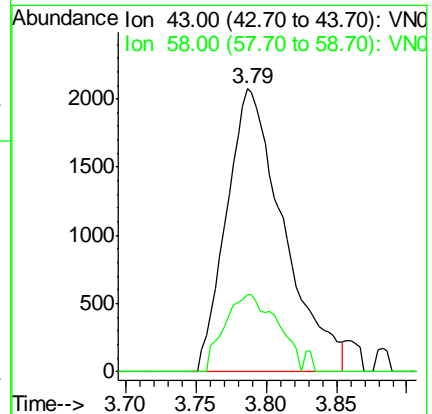
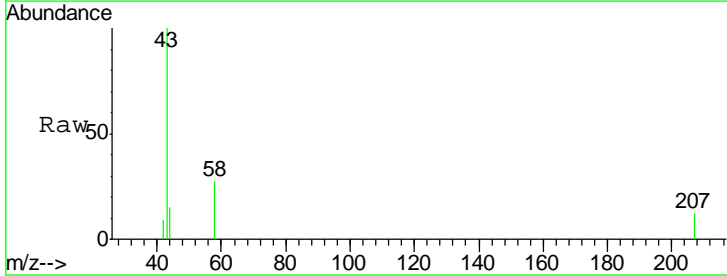
Instrument : MSVOA_N
 ClientSampleID : PB127624ZHE#09

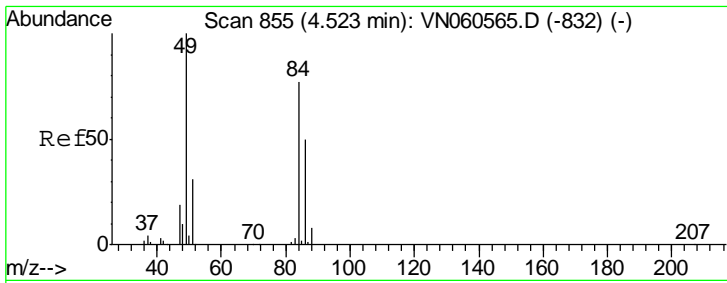
Tgt Ion	Resp	Lower	Upper
168	100		
99	55.7	44.0	66.0



#16
 Acetone
 Concen: 6.024 ug/l
 RT: 3.79 min Scan# 626
 Delta R.T. 0.01 min
 Lab File: VN060615.D
 Acq: 19 Mar 2020 1:06

Tgt Ion	Resp	Lower	Upper
43	100		
58	27.4	25.1	37.7

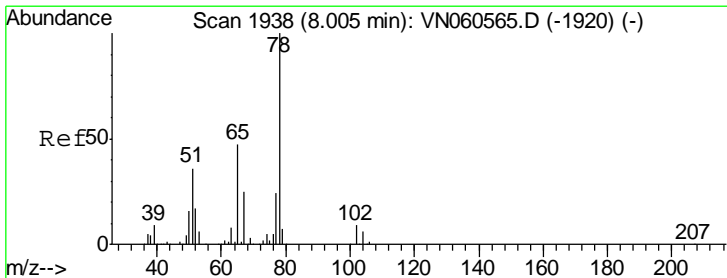
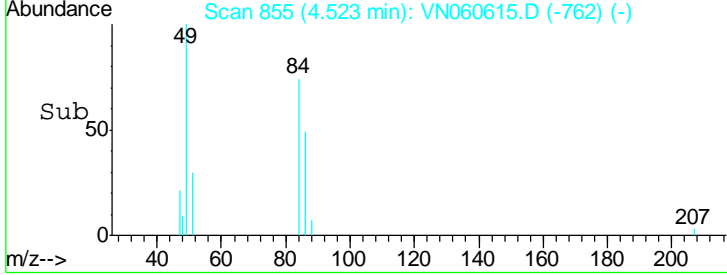
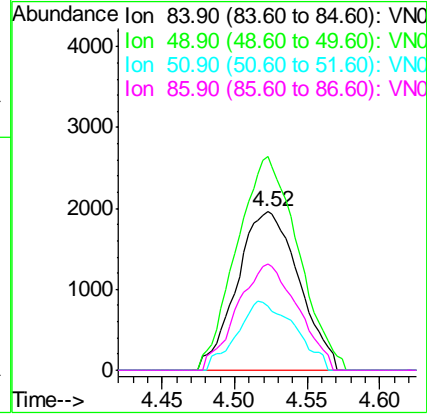
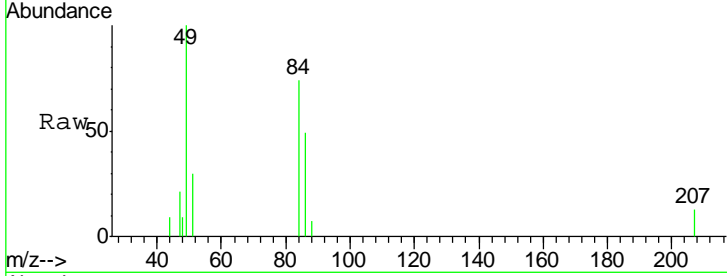




#20
 Methylene Chloride
 Concen: 2.436 ug/l
 RT: 4.52 min Scan# 855
 Delta R.T. 0.00 min
 Lab File: VN060615.D
 Acq: 19 Mar 2020 1:06

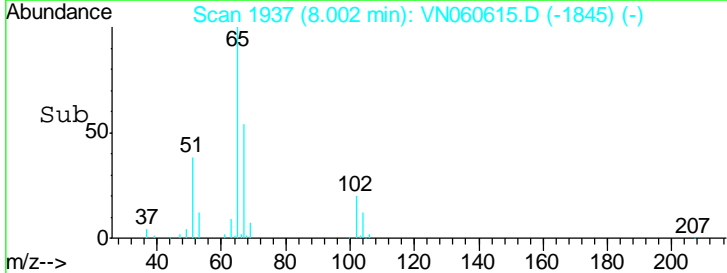
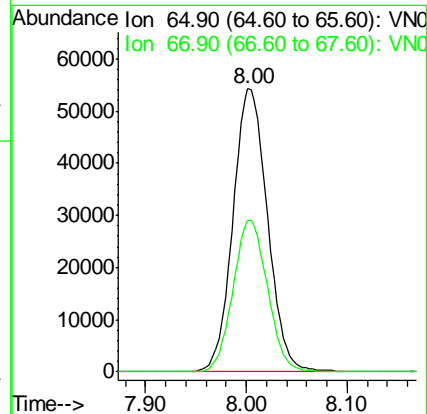
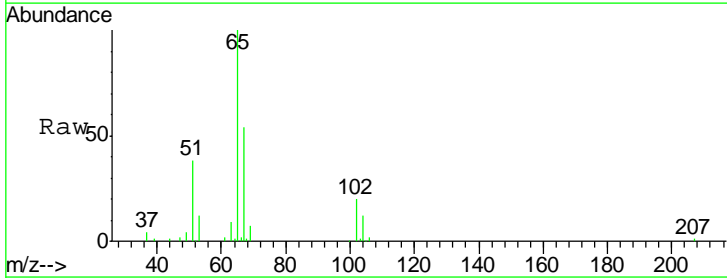
Instrument :
 MSVOA_N
 ClientSampleId :
 PB127624ZHE#09

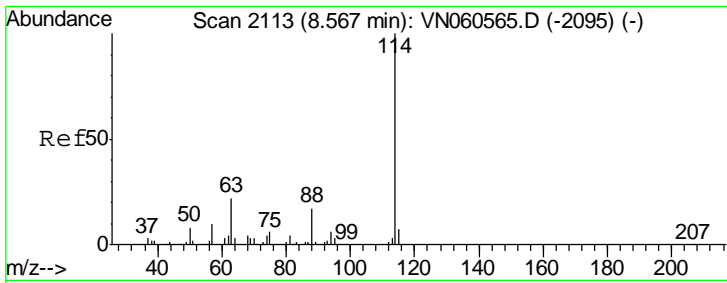
Tgt Ion	Resp	Lower	Upper
84	5823		
49	134.6	103.3	154.9
51	40.3	31.6	47.4
86	66.6	52.0	78.0



#33
 1,2-Dichloroethane-d4
 Concen: 47.077 ug/l
 RT: 8.00 min Scan# 1937
 Delta R.T. -0.00 min
 Lab File: VN060615.D
 Acq: 19 Mar 2020 1:06

Tgt Ion	Resp	Lower	Upper
65	129146		
67	53.5	0.0	107.6

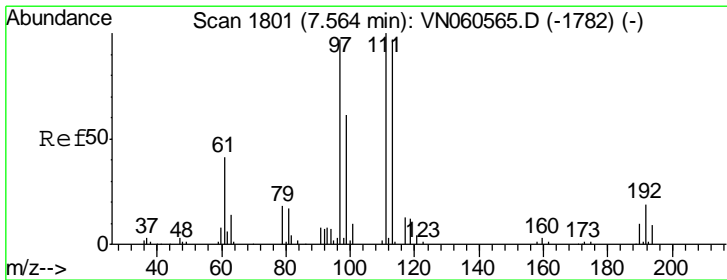
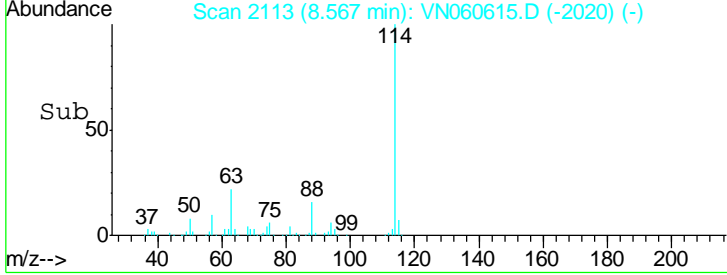
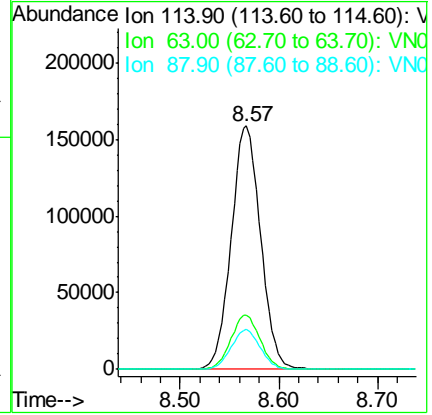
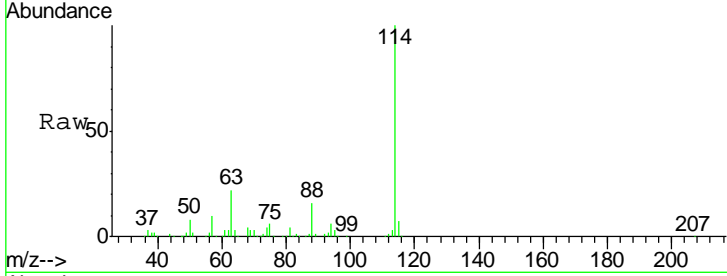




#34
 1,4-Difluorobenzene
 Concen: 50.000 ug/l
 RT: 8.57 min Scan# 2113
 Delta R.T. 0.00 min
 Lab File: VN060615.D
 Acq: 19 Mar 2020 1:06

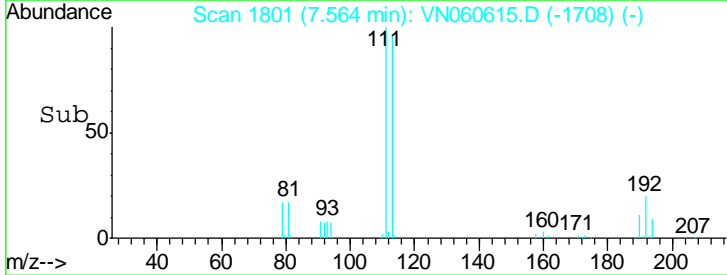
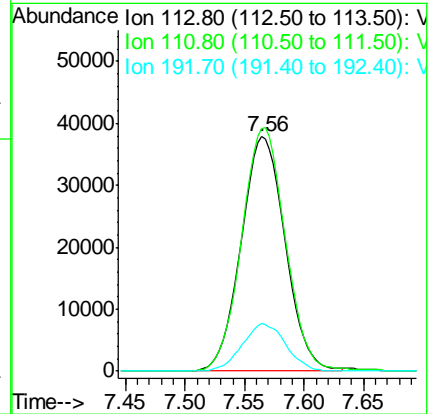
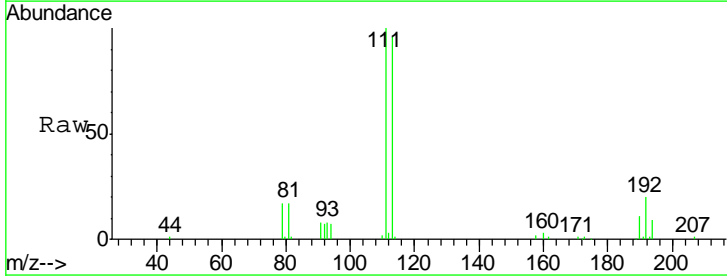
Instrument : MSVOA_N
 ClientSampled : PB127624ZHE#09

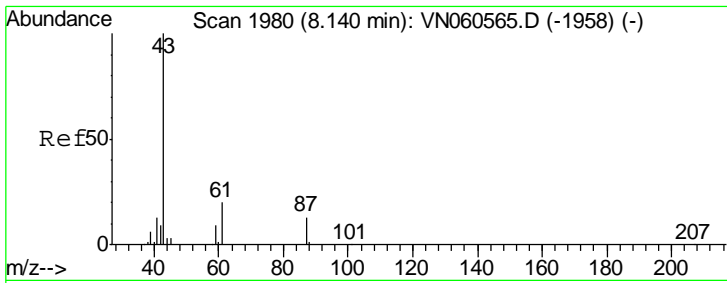
Tgt Ion	Resp	Lower	Upper
114	100		
63	22.4	0.0	43.8
88	16.3	0.0	33.0



#35
 Dibromofluoromethane
 Concen: 48.539 ug/l
 RT: 7.56 min Scan# 1801
 Delta R.T. 0.00 min
 Lab File: VN060615.D
 Acq: 19 Mar 2020 1:06

Tgt Ion	Resp	Lower	Upper
113	100		
111	103.5	82.9	124.3
192	20.0	15.8	23.8

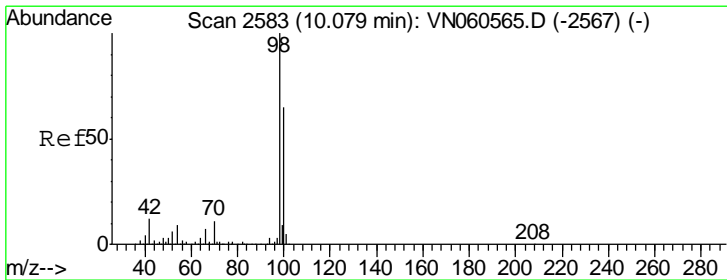
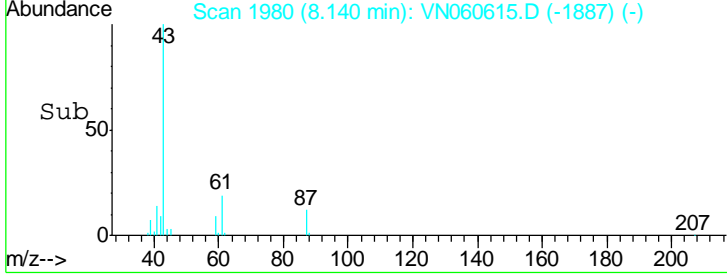
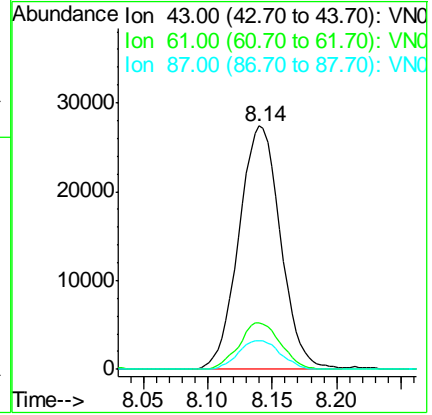
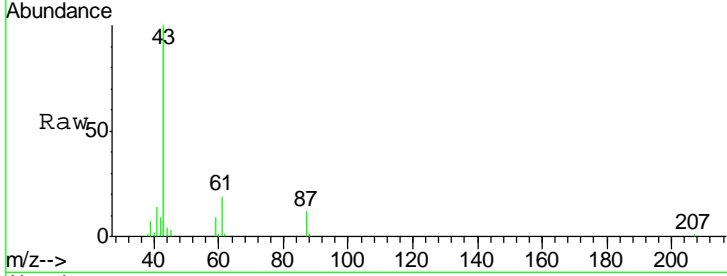




#43
 Isopropyl Acetate
 Concen: 10.818 ug/l
 RT: 8.14 min Scan# 1980
 Delta R.T. 0.00 min
 Lab File: VN060615.D
 Acq: 19 Mar 2020 1:06

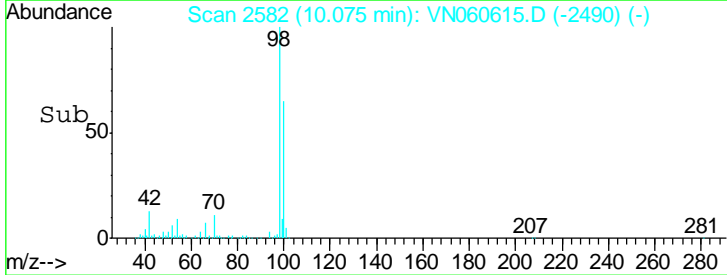
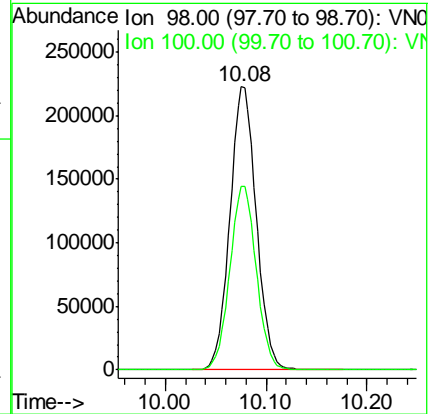
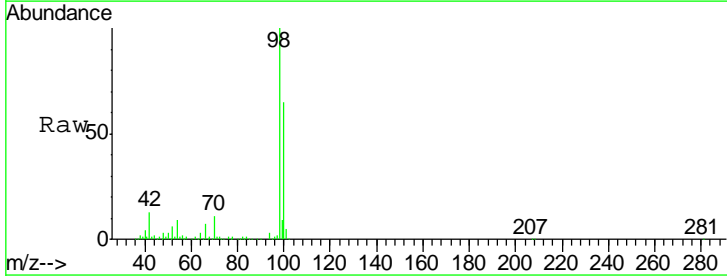
Instrument : MSVOA_N
 ClientSampled : PB127624ZHE#09

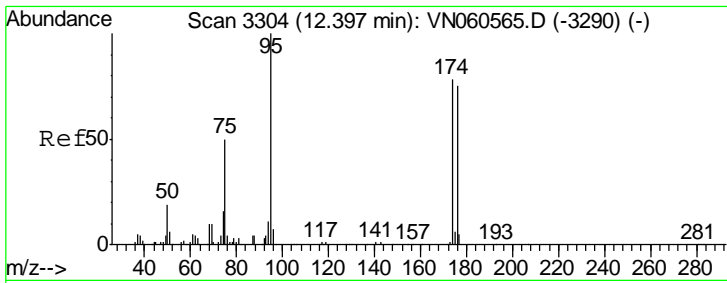
Tgt Ion	Resp	Lower	Upper
43	100		
61	19.1	20.7	31.1#
87	11.8	9.8	14.8



#50
 Toluene-d8
 Concen: 49.814 ug/l
 RT: 10.08 min Scan# 2582
 Delta R.T. -0.00 min
 Lab File: VN060615.D
 Acq: 19 Mar 2020 1:06

Tgt Ion	Resp	Lower	Upper
98	100		
100	65.1	51.8	77.8

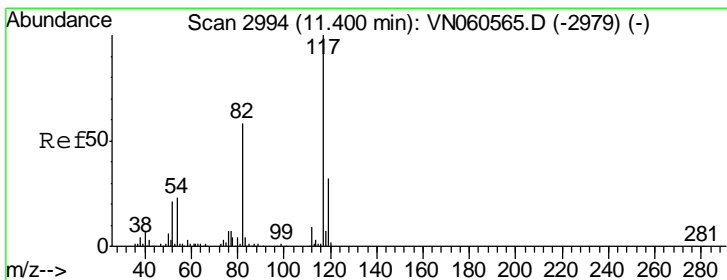
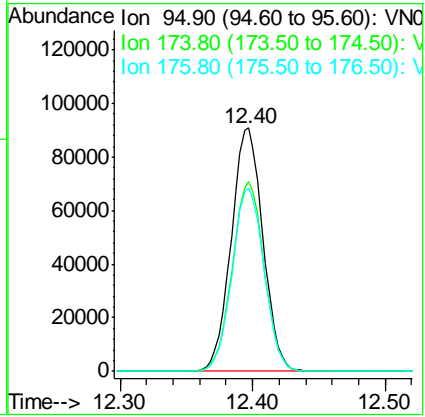
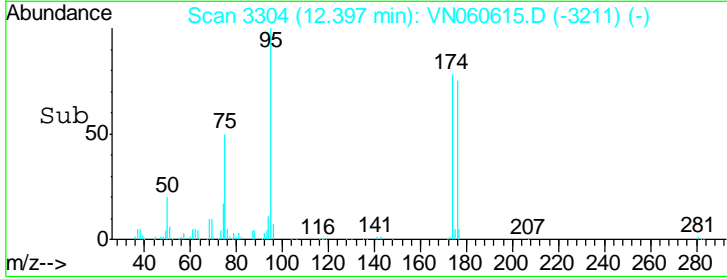
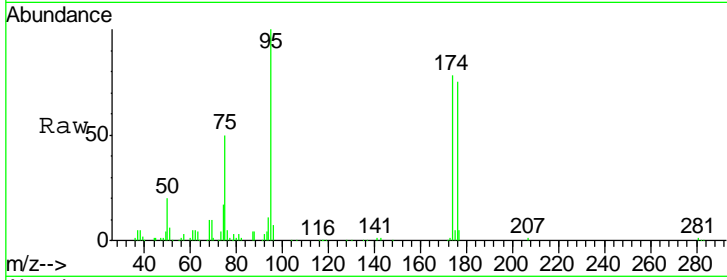




#62
 4-Bromofluorobenzene
 Concen: 50.341 ug/l
 RT: 12.40 min Scan# 3304
 Delta R.T. 0.00 min
 Lab File: VN060615.D
 Acq: 19 Mar 2020 1:06

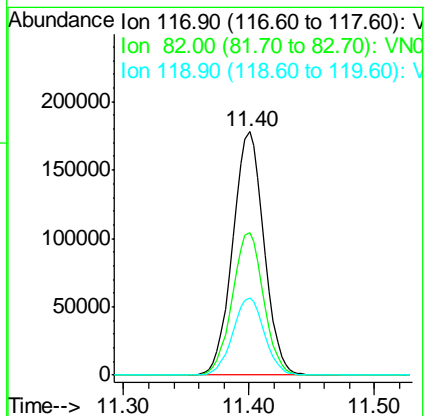
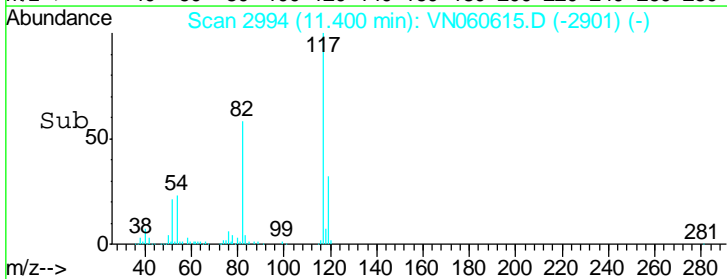
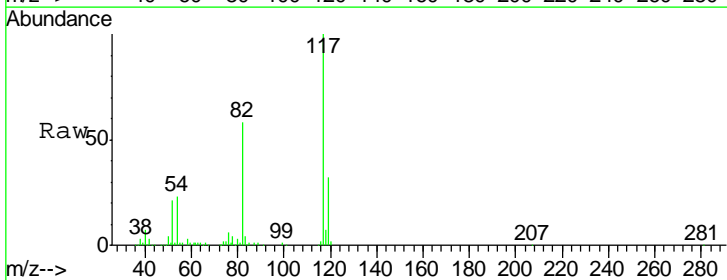
Instrument : MSVOA_N
 ClientSampleId : PB127624ZHE#09

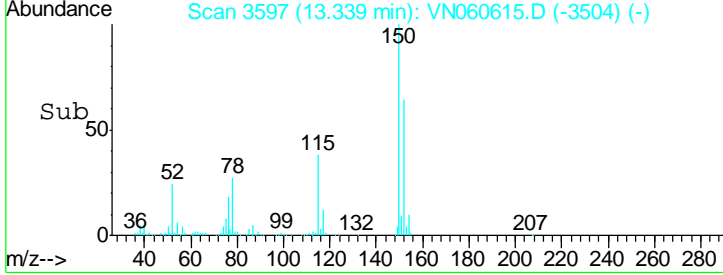
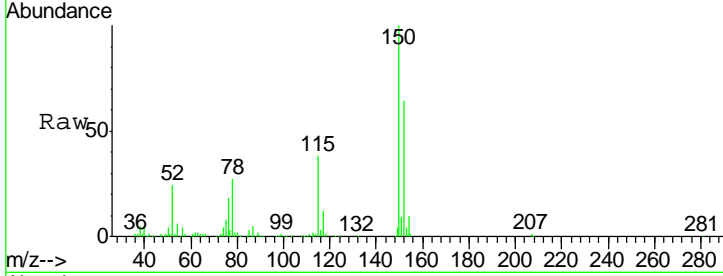
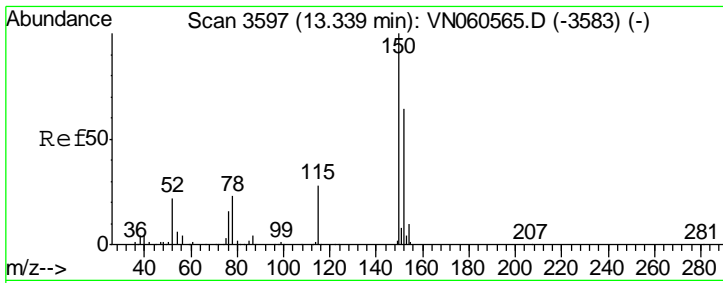
Tgt Ion	Resp	Lower	Upper
95	150582		
174	78.3	0.0	157.6
176	75.8	0.0	150.6



#63
 Chlorobenzene-d5
 Concen: 50.000 ug/l
 RT: 11.40 min Scan# 2994
 Delta R.T. 0.00 min
 Lab File: VN060615.D
 Acq: 19 Mar 2020 1:06

Tgt Ion	Resp	Lower	Upper
117	307203		
82	58.5	46.7	70.1
119	31.7	25.5	38.3





#72
 1,4-Dichlorobenzene-d4
 Concen: 50.000 ug/l
 RT: 13.34 min Scan# 3597
 Delta R.T. 0.00 min
 Lab File: VN060615.D
 Acq: 19 Mar 2020 1:06

Instrument : MSVOA_N
 ClientSampleId : PB127624ZHE#09

Tot Ion	Resp	Lower	Upper
152	138624		
115	59.5	30.2	90.6
150	155.7	0.0	350.2

