

Data Path : Z:\voasrv\HPCHEM1\MSVOA_N\Data\VN031919\
 Data File : VN054441.D
 Acq On : 19 Mar 2019 15:26
 Operator : JC/SP
 Sample : K1970-03ME
 Misc : 6.98g/10mL/100uL/5.00mL/MSVOA_N/MEOH
 ALS Vial : 13 Sample Multiplier: 1

Instrument :
 MSVOA_N
 ClientSampleId :
 P-3-E.WALL-N.CENTERME

Quant Time: Mar 19 15:53:11 2019
 Quant Method : Z:\VOASRV\HPCHEM1\MSVOA_N\METHODS\82N031219W.M
 Quant Title : SW846 8260
 QLast Update : Wed Mar 13 03:33:31 2019
 Response via : Initial Calibration

Internal Standards	R.T.	QIon	Response	Conc	Units	Dev(Min)
1) Pentafluorobenzene	7.66	168	1894832	50.00	ug/l	0.00
34) 1,4-Difluorobenzene	8.58	114	2647161	50.00	ug/l	0.00
63) Chlorobenzene-d5	11.41	117	2331021	50.00	ug/l	0.00
72) 1,4-Dichlorobenzene-d4	13.34	152	1149358	50.00	ug/l	0.00

System Monitoring Compounds

33) 1,2-Dichloroethane-d4	8.02	65	794471	39.48	ug/l	0.00
Spiked Amount	50.000		Recovery	=	78.96%	
35) Dibromofluoromethane	7.59	113	756335	44.30	ug/l	0.00
Spiked Amount	50.000		Recovery	=	88.60%	
50) Toluene-d8	10.09	98	3167072	50.23	ug/l	0.00
Spiked Amount	50.000		Recovery	=	100.46%	
62) 4-Bromofluorobenzene	12.40	95	1021972	46.32	ug/l	0.00
Spiked Amount	50.000		Recovery	=	92.64%	

Target Compounds

						Qvalue
10) Methyl Iodide	3.95	142	105	1.501	ug/l #	45
11) Tert butyl alcohol	4.73	59	2369	1.717	ug/l #	70
18) Methyl Acetate	4.33	43	4071	0.349	ug/l #	49
20) Methylene Chloride	4.53	84	8505	0.450	ug/l	95
31) Cyclohexane	7.65	56	87141	1.694	ug/l #	72
36) 1,1-Dichloropropene	7.66	75	104313	4.279	ug/l #	48
38) Carbon Tetrachloride	7.66	117	147938	5.787	ug/l #	15
39) Methylcyclohexane	9.08	83	375006	12.503	ug/l	97
43) Isopropyl Acetate	8.14	43	14161	0.576	ug/l #	60
47) Bromodichloromethane	9.36	83	5460	0.233	ug/l #	75
48) Methyl methacrylate	9.14	41	19175	1.537	ug/l #	41
51) 4-Methyl-2-Pentanone	10.08	43	29497	2.267	ug/l #	45
53) t-1,3-Dichloropropene	10.38	75	70	1.988	ug/l #	42
55) 1,1,2-Trichloroethane	10.53	97	151972	9.409	ug/l #	20
56) Ethyl methacrylate	10.43	69	54078	2.808	ug/l #	37
58) 2-Chloroethyl Vinyl ether	9.69	63	68	16.836	ug/l #	44
59) 2-Hexanone	10.72	43	205043	23.683	ug/l #	29
67) Ethyl Benzene	11.51	91	120850	1.424	ug/l	99
71) Bromoform	12.12	173	252	2.368	ug/l #	28
73) Isopropylbenzene	12.25	105	575472	6.258	ug/l	99
74) N-amyl acetate	12.04	43	277636	13.602	ug/l #	54
75) 1,1,2,2-Tetrachloroethane	12.56	83	183591	9.371	ug/l #	37
76) 1,2,3-Trichloropropane	12.40	75	456499	27.009	ug/l #	100
77) Bromobenzene	12.54	156	53613	2.203	ug/l #	1
78) n-propylbenzene	12.59	91	1333683	13.367	ug/l	100
79) 2-Chlorotoluene	12.59	91	1333683	22.230	ug/l #	38
80) 1,3,5-Trimethylbenzene	12.89	105	39215	0.513	ug/l	76
81) trans-1,4-Dichloro-2-buten	12.40	75	456499	92.328	ug/l #	12
82) 4-Chlorotoluene	12.59	91	1333683	22.263	ug/l #	39
83) tert-Butylbenzene	12.99	119	36822	0.523	ug/l #	83
84) 1,2,4-Trimethylbenzene	13.17	105	1319301	17.582	ug/l #	30
85) sec-Butylbenzene	13.17	105	1319301	14.450	ug/l	89
86) p-Isopropyltoluene	13.44	119	209137	2.611	ug/l	94
89) n-Butylbenzene	13.61	91	1279854	21.029	ug/l #	85

Data Path : Z:\voasrv\HPCHEM1\MSVOA_N\Data\VN031919\
 Data File : VN054441.D
 Acq On : 19 Mar 2019 15:26
 Operator : JC/SP
 Sample : K1970-03ME
 Misc : 6.98g/10mL/100uL/5.00mL/MSVOA_N/MEOH
 ALS Vial : 13 Sample Multiplier: 1

Instrument :
 MSVOA_N
 ClientSampleId :
 P-3-E.WALL-N.CENTERME

Quant Time: Mar 19 15:53:11 2019
 Quant Method : Z:\VOASRV\HPCHEM1\MSVOA_N\METHODS\82N031219W.M
 Quant Title : SW846 8260
 QLast Update : Wed Mar 13 03:33:31 2019
 Response via : Initial Calibration

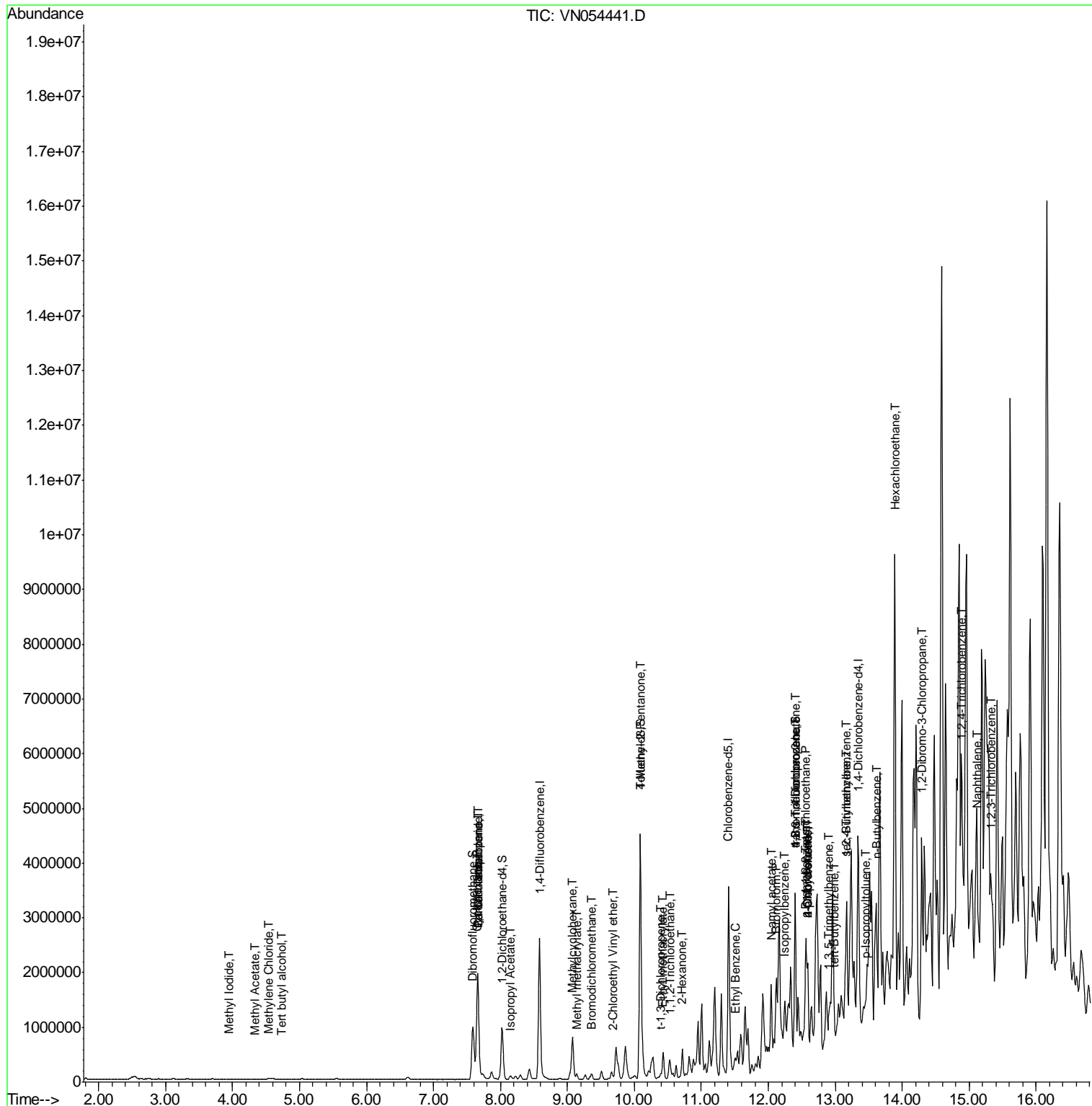
Internal Standards	R.T.	QIon	Response	Conc	Units	Dev(Min)
90) Hexachloroethane	13.89	117	407482	30.723	ug/l #	2
92) 1,2-Dibromo-3-Chloropropan	14.29	75	10802	3.563	ug/l #	1
93) 1,2,4-Trichlorobenzene	14.90	180	4326	2.686	ug/l #	87
95) Naphthalene	15.13	128	178521	6.765	ug/l #	69
96) 1,2,3-Trichlorobenzene	15.34	180	5543	0.260	ug/l #	12

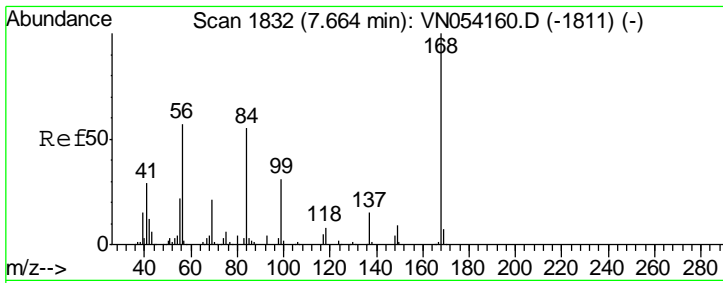
(#) = qualifier out of range (m) = manual integration (+) = signals summed

Data Path : Z:\voasrv\HPCHEM1\MSVOA_N\Data\VN031919\
 Data File : VN054441.D
 Acq On : 19 Mar 2019 15:26
 Operator : JC/SP
 Sample : K1970-03ME
 Misc : 6.98g/10mL/100uL/5.00mL/MSVOA_N/MEOH
 ALS Vial : 13 Sample Multiplier: 1

Instrument :
 MSVOA_N
Client Sample Id :
 P-3-E.WALL-N.CENTERME

Quant Time: Mar 19 15:53:11 2019
 Quant Method : Z:\VOASRV\HPCHEM1\MSVOA_N\METHODS\82N031219W.M
 Quant Title : SW846 8260
 QLast Update : Wed Mar 13 03:33:31 2019
 Response via : Initial Calibration

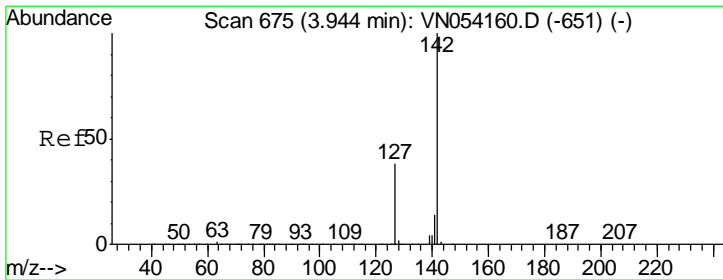
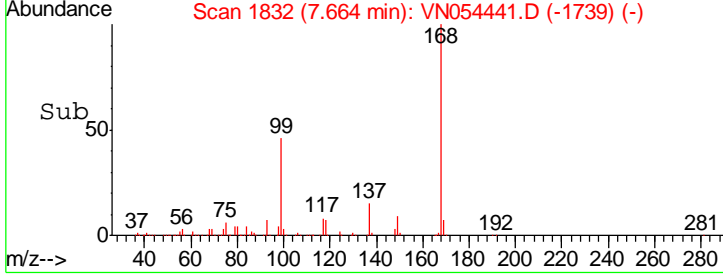
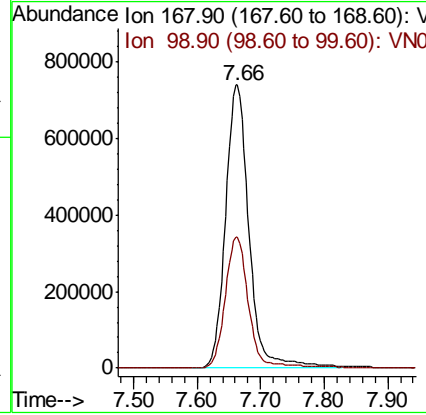
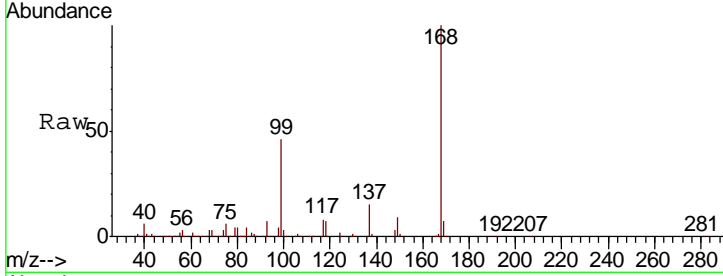




#1
 Pentafluorobenzene
 Concen: 50.000 ug/l
 RT: 7.66 min Scan# 1832
 Delta R.T. 0.00 min
 Lab File: VN054441.D
 Acq: 19 Mar 2019 15:26

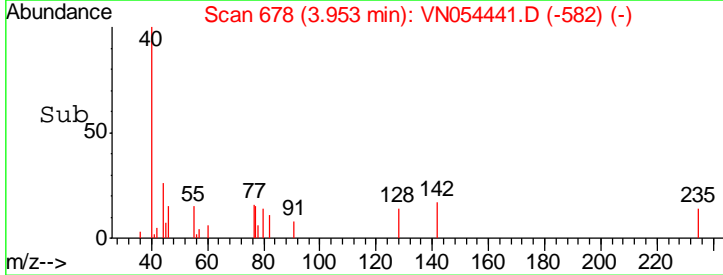
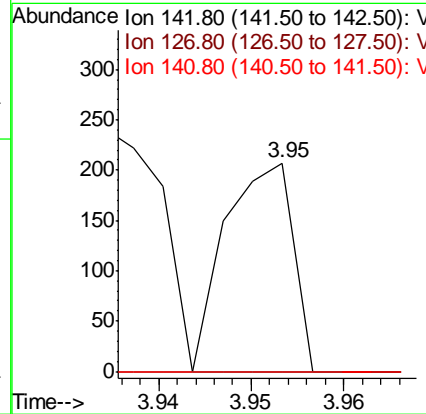
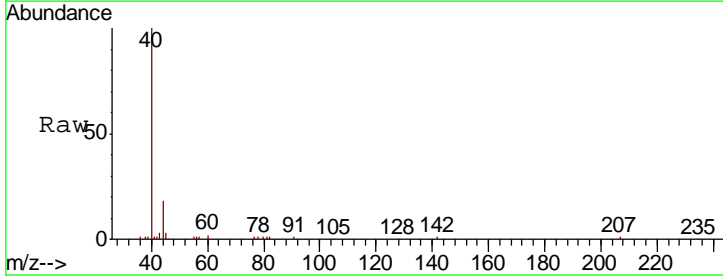
Instrument : MSVOA_N
 ClientSampled : P-3-E.WALL-N.CENTERME

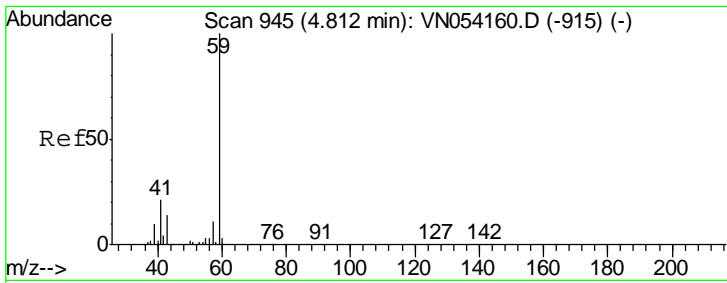
Tgt Ion	Resp	Lower	Upper
168	100		
99	46.3	37.1	55.7



#10
 Methyl Iodide
 Concen: 1.501 ug/l
 RT: 3.95 min Scan# 678
 Delta R.T. 0.01 min
 Lab File: VN054441.D
 Acq: 19 Mar 2019 15:26

Tgt Ion	Resp	Lower	Upper
142	100		
127	0.0	30.3	45.5#
141	0.0	11.2	16.8#

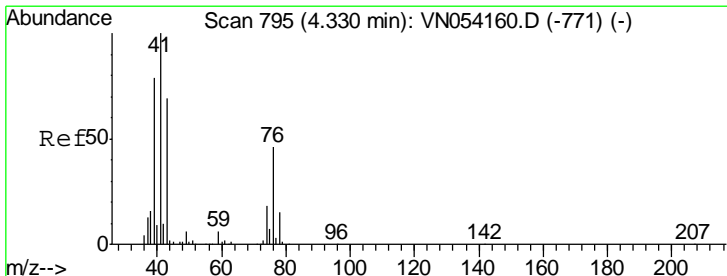
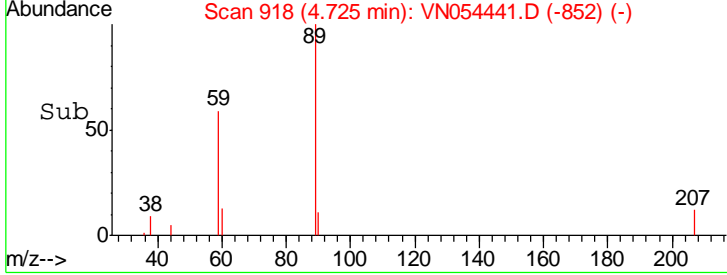
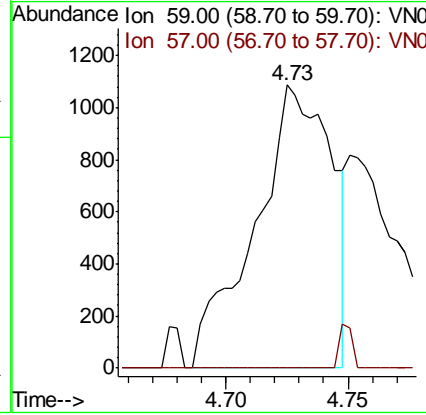
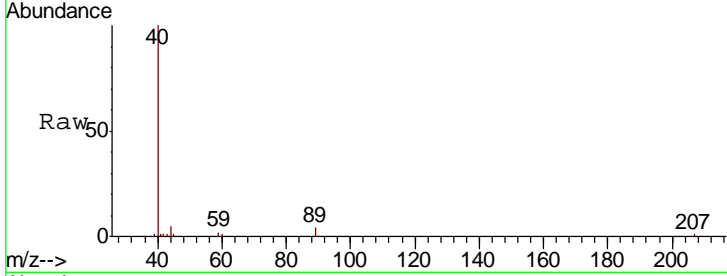




#11
 Tert butyl alcohol
 Concen: 1.717 ug/l
 RT: 4.73 min Scan# 918
 Delta R.T. -0.09 min
 Lab File: VN054441.D
 Acq: 19 Mar 2019 15:26

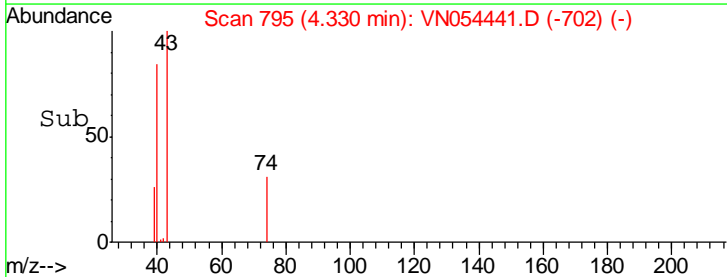
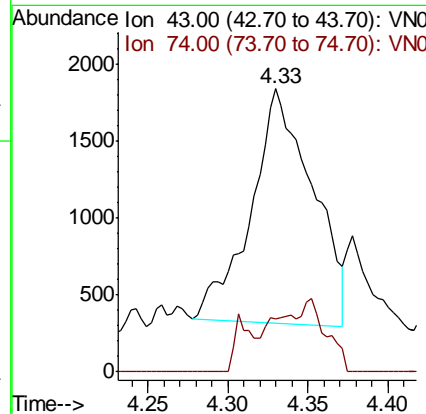
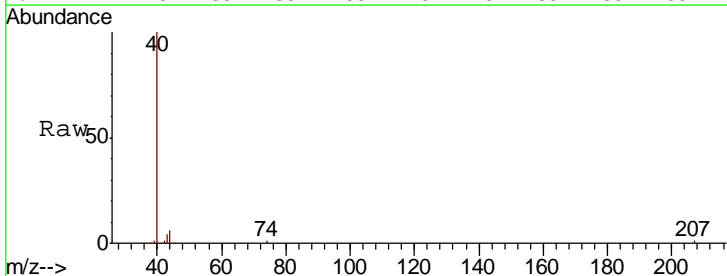
Instrument : MSVOA_N
 ClientSampled : P-3-E.WALL-N.CENTERME

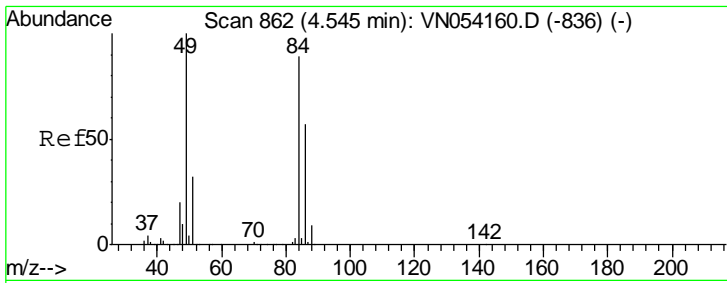
Tgt Ion: 59 Resp: 2369
 Ion Ratio Lower Upper
 59 100
 57 0.0 9.0 13.6#



#18
 Methyl Acetate
 Concen: 0.349 ug/l
 RT: 4.33 min Scan# 795
 Delta R.T. 0.00 min
 Lab File: VN054441.D
 Acq: 19 Mar 2019 15:26

Tgt Ion: 43 Resp: 4071
 Ion Ratio Lower Upper
 43 100
 74 0.0 20.8 31.2#

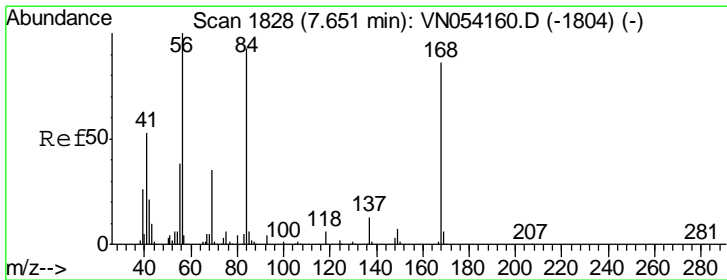
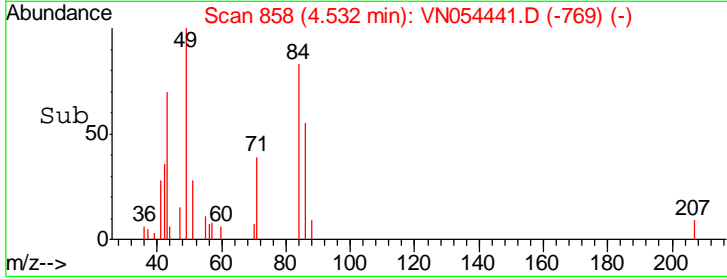
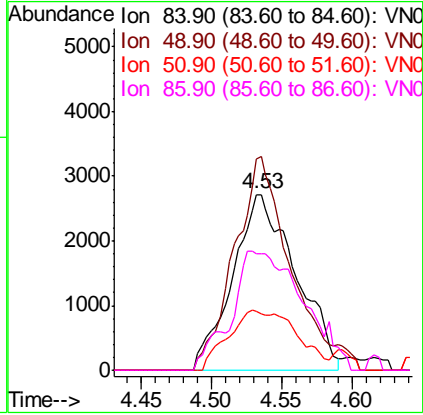
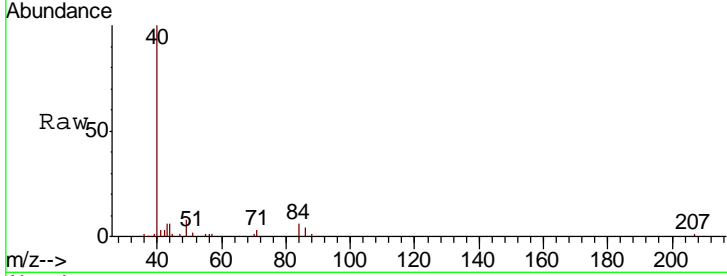




#20
 Methylene Chloride
 Concen: 0.450 ug/l
 RT: 4.53 min Scan# 858
 Delta R.T. -0.01 min
 Lab File: VN054441.D
 Acq: 19 Mar 2019 15:26

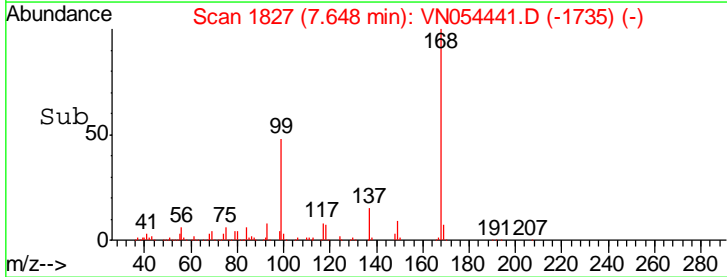
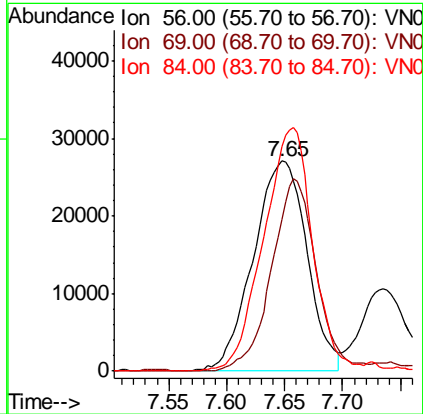
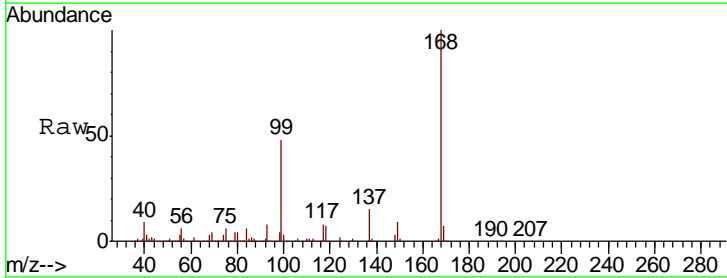
Instrument :
 MSVOA_N
ClientSampleId :
 P-3-E.WALL-N.CENTERME

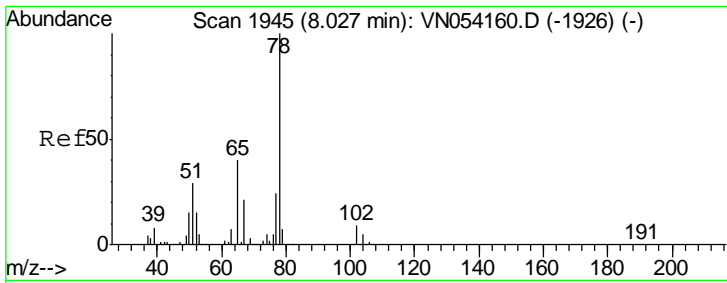
Tgt Ion	Resp	Lower	Upper
84	100		
49	120.0	89.7	134.5
51	33.4	28.2	42.4
86	66.0	50.8	76.2



#31
 Cyclohexane
 Concen: 1.694 ug/l
 RT: 7.65 min Scan# 1827
 Delta R.T. -0.00 min
 Lab File: VN054441.D
 Acq: 19 Mar 2019 15:26

Tgt Ion	Resp	Lower	Upper
56	100		
69	72.1	27.8	41.6#
84	107.0	74.6	111.8

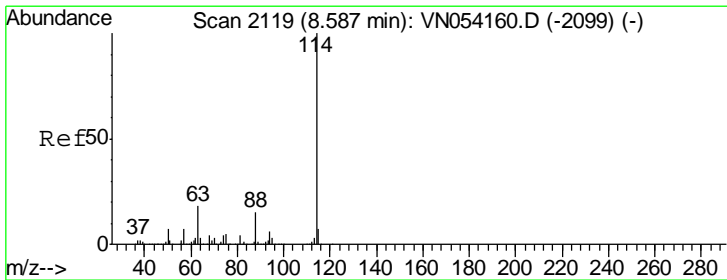
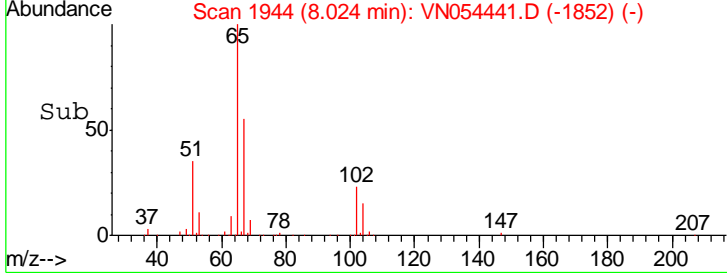
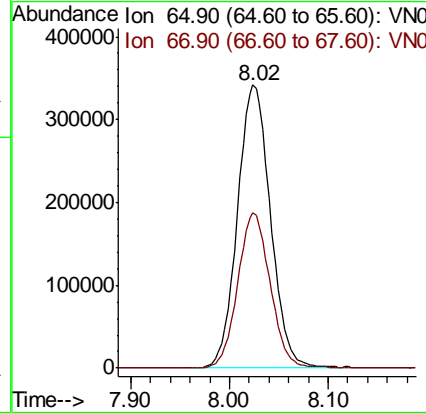
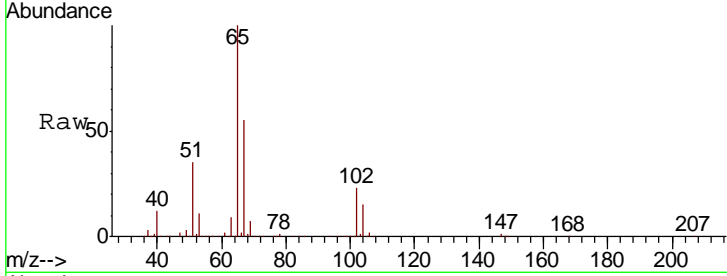




#33
 1,2-Dichloroethane-d4
 Concen: 39.480 ug/l
 RT: 8.02 min Scan# 1944
 Delta R.T. -0.00 min
 Lab File: VN054441.D
 Acq: 19 Mar 2019 15:26

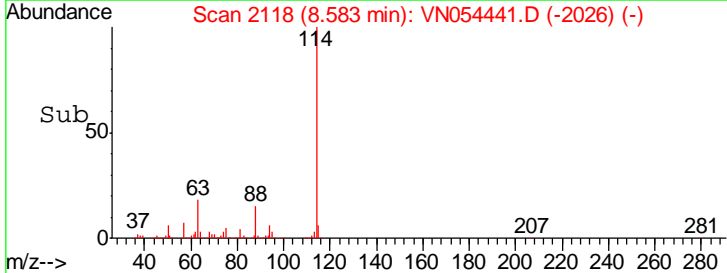
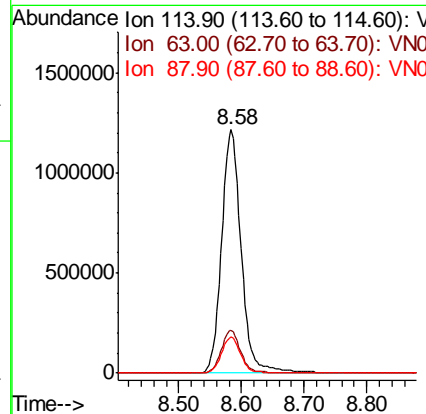
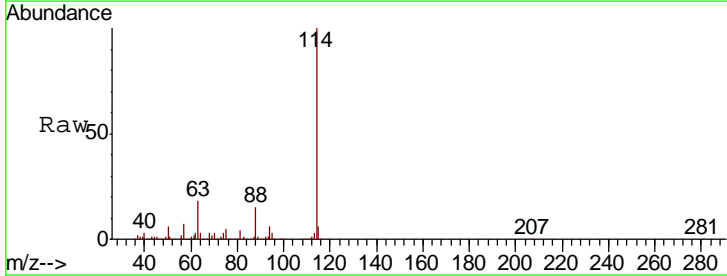
Instrument :
 MSVOA_N
ClientSampled :
 P-3-E.WALL-N.CENTERME

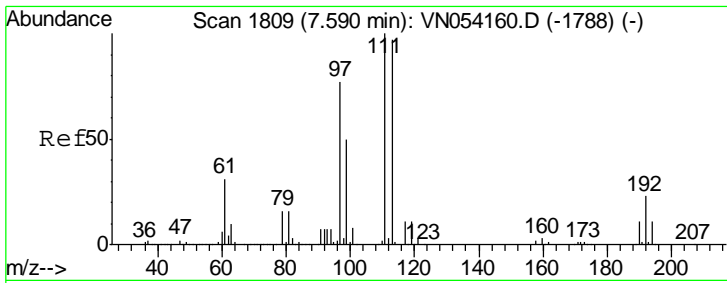
Tgt Ion: 65 Resp: 794471
 Ion Ratio Lower Upper
 65 100
 67 53.9 0.0 104.6



#34
 1,4-Difluorobenzene
 Concen: 50.000 ug/l
 RT: 8.58 min Scan# 2118
 Delta R.T. -0.00 min
 Lab File: VN054441.D
 Acq: 19 Mar 2019 15:26

Tgt Ion: 114 Resp: 2647161
 Ion Ratio Lower Upper
 114 100
 63 17.7 0.0 35.2
 88 14.9 0.0 30.2

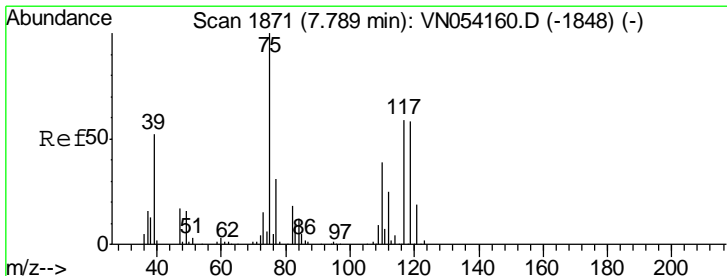
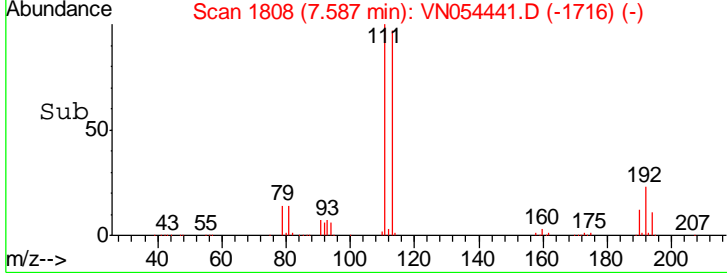
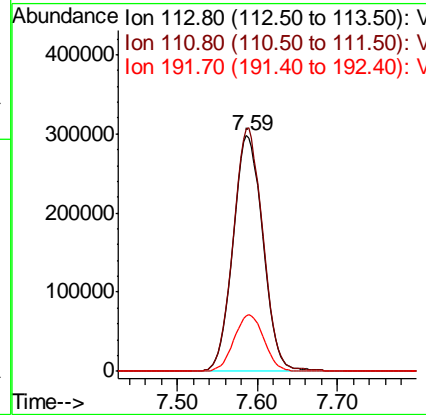
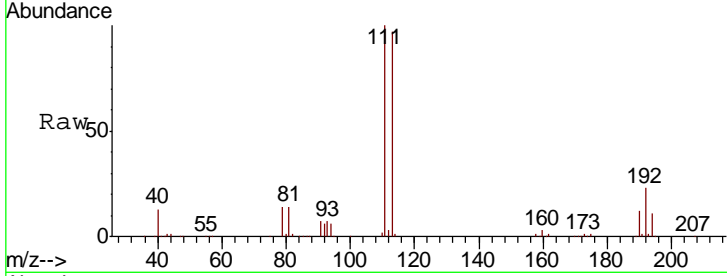




#35
 Dibromofluoromethane
 Concen: 44.300 ug/l
 RT: 7.59 min Scan# 1808
 Delta R.T. -0.00 min
 Lab File: VN054441.D
 Acq: 19 Mar 2019 15:26

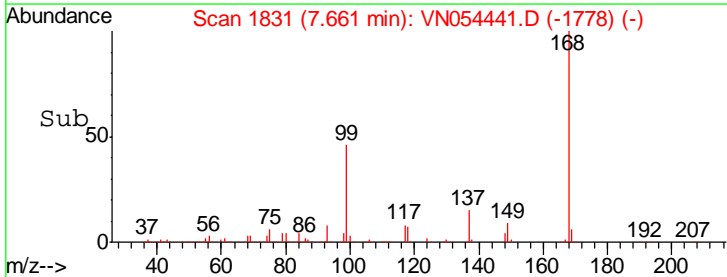
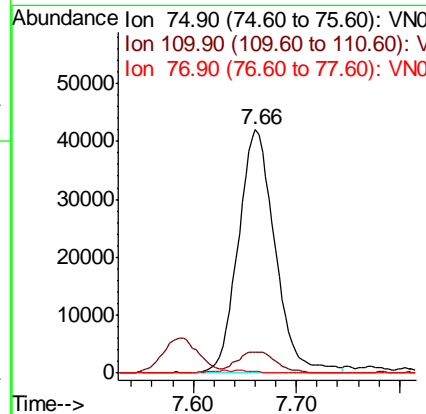
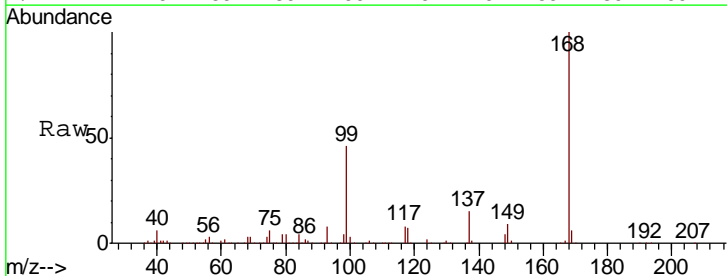
Instrument :
 MSVOA_N
 ClientSampleId :
 P-3-E.WALL-N.CENTERME

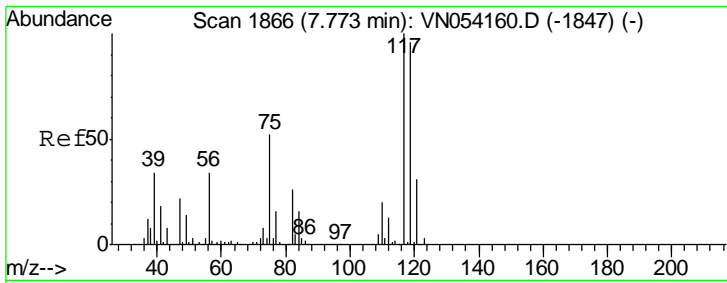
Tgt Ion	Resp	Lower	Upper
113	100		
111	102.2	82.2	123.4
192	23.9	19.2	28.8



#36
 1,1-Dichloropropene
 Concen: 4.279 ug/l
 RT: 7.66 min Scan# 1831
 Delta R.T. -0.13 min
 Lab File: VN054441.D
 Acq: 19 Mar 2019 15:26

Tgt Ion	Resp	Lower	Upper
75	100		
110	9.2	19.1	57.5#
77	0.0	25.0	37.4#

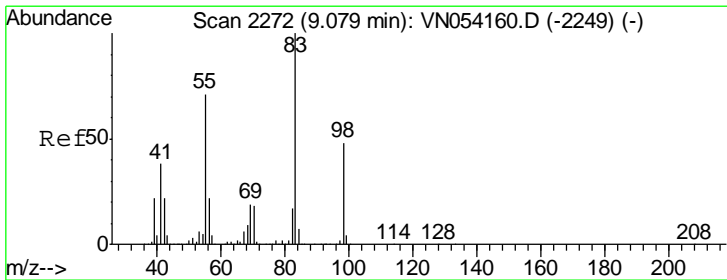
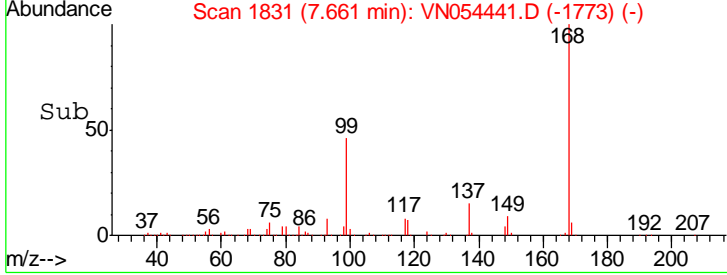
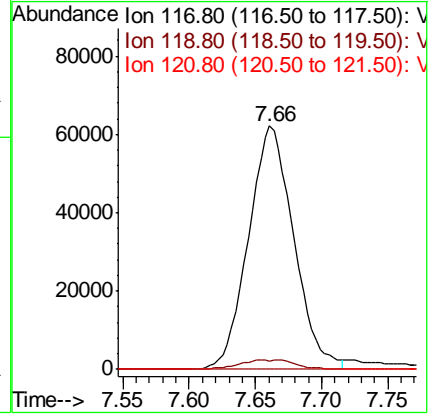
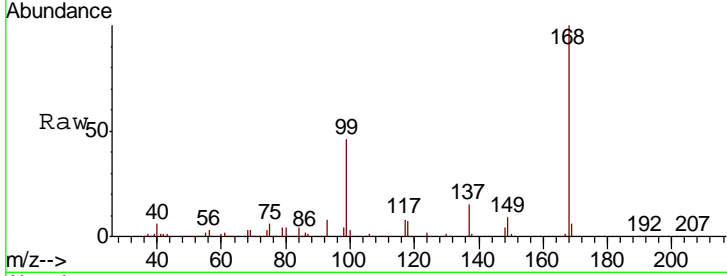




#38
 Carbon Tetrachloride
 Concen: 5.787 ug/l
 RT: 7.66 min Scan# 1831
 Delta R.T. -0.11 min
 Lab File: VN054441.D
 Acq: 19 Mar 2019 15:26

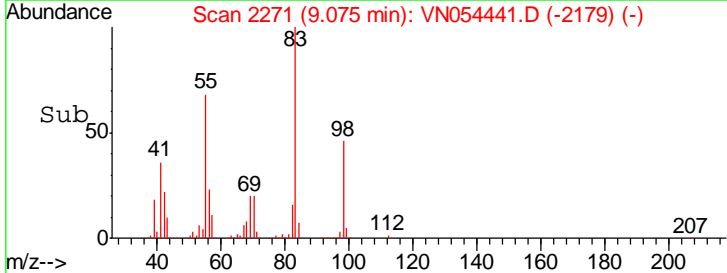
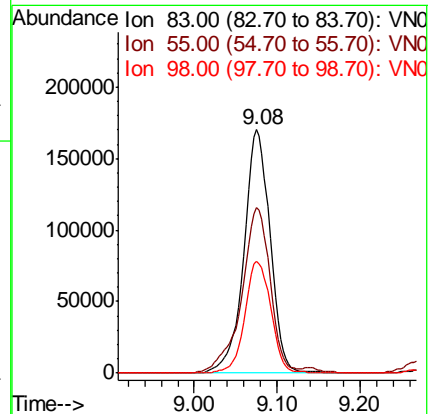
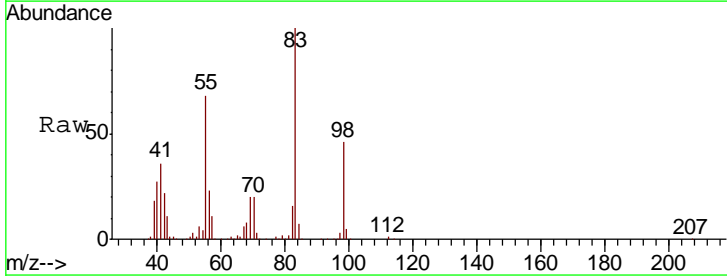
Instrument : MSVOA_N
 ClientSampled : P-3-E.WALL-N.CENTERME

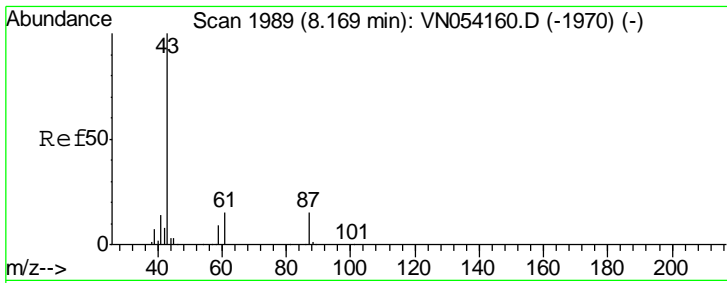
Tgt Ion	Resp	Lower	Upper
117	147938		
119	3.6	76.3	114.5#
121	0.0	24.6	36.8#



#39
 Methylcyclohexane
 Concen: 12.503 ug/l
 RT: 9.08 min Scan# 2271
 Delta R.T. -0.00 min
 Lab File: VN054441.D
 Acq: 19 Mar 2019 15:26

Tgt Ion	Resp	Lower	Upper
83	375006		
55	67.8	56.6	84.8
98	45.8	38.4	57.6

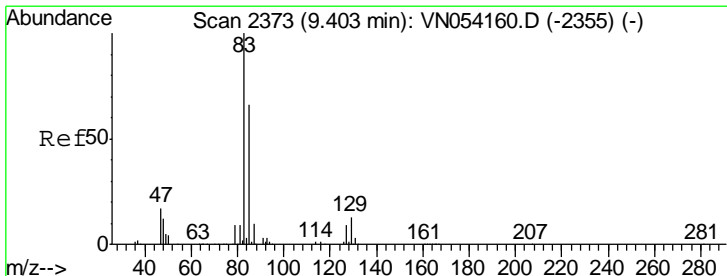
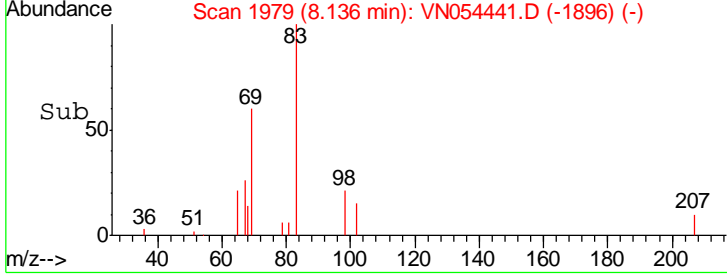
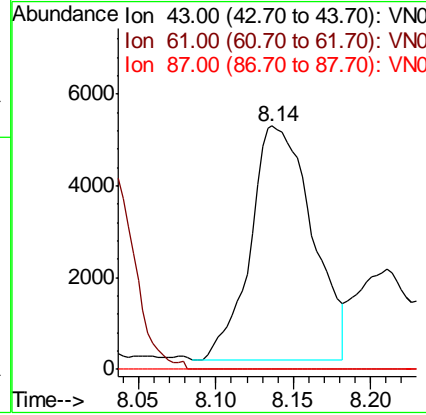
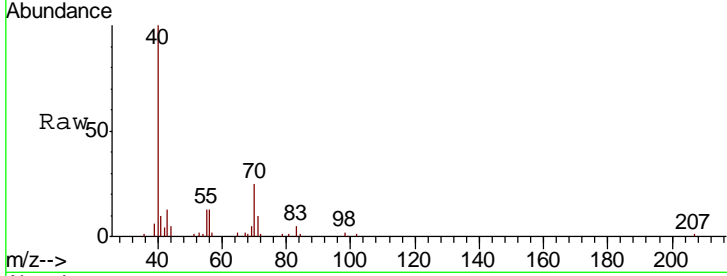




#43
 Isopropyl Acetate
 Concen: 0.576 ug/l
 RT: 8.14 min Scan# 1979
 Delta R.T. -0.03 min
 Lab File: VN054441.D
 Acq: 19 Mar 2019 15:26

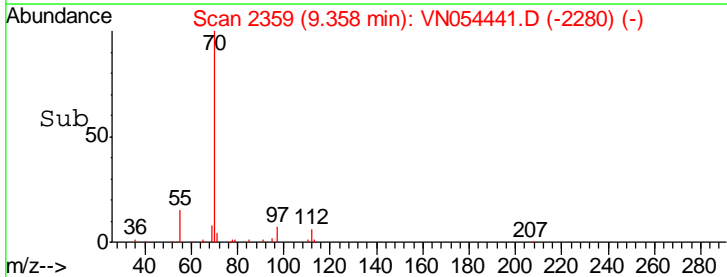
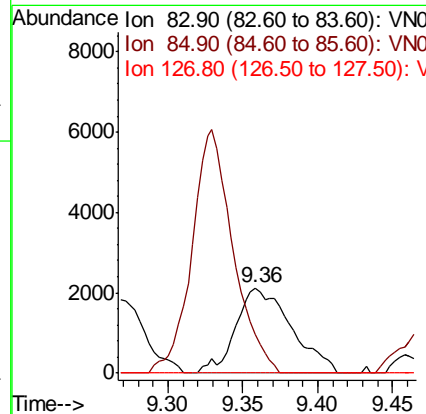
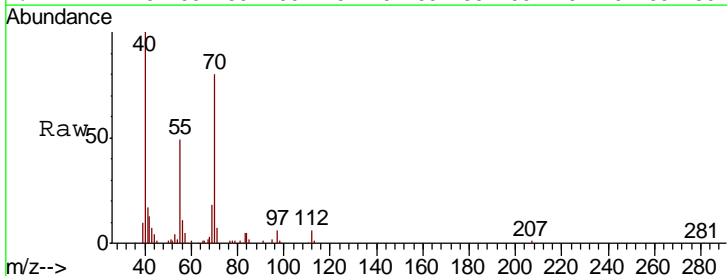
Instrument : MSVOA_N
 ClientSampled : P-3-E.WALL-N.CENTERME

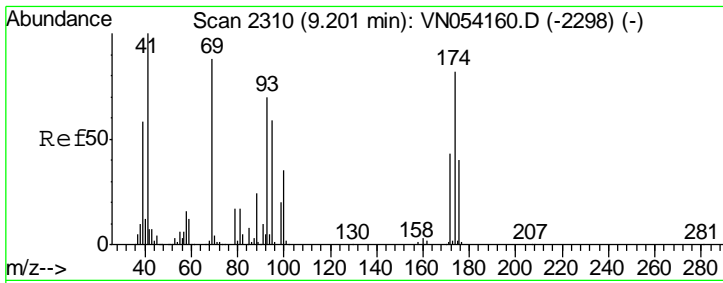
Tgt Ion	Resp	Lower	Upper
43	14161		
61	0.0	15.8	23.8#
87	0.0	12.0	18.0#



#47
 Bromodichloromethane
 Concen: 0.233 ug/l
 RT: 9.36 min Scan# 2359
 Delta R.T. -0.04 min
 Lab File: VN054441.D
 Acq: 19 Mar 2019 15:26

Tgt Ion	Resp	Lower	Upper
83	5460		
85	46.1	52.8	79.2#
127	0.0	7.4	11.2#

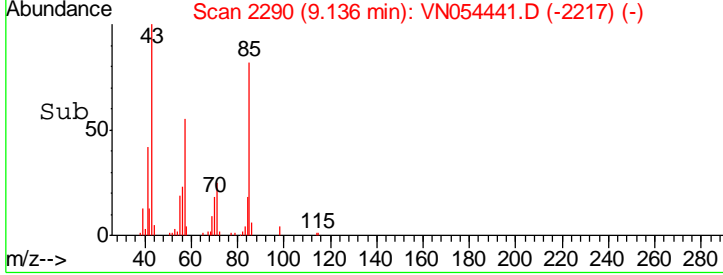
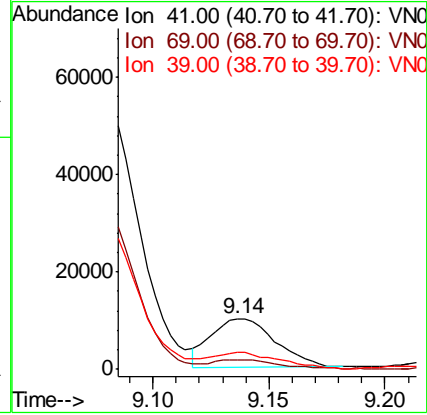
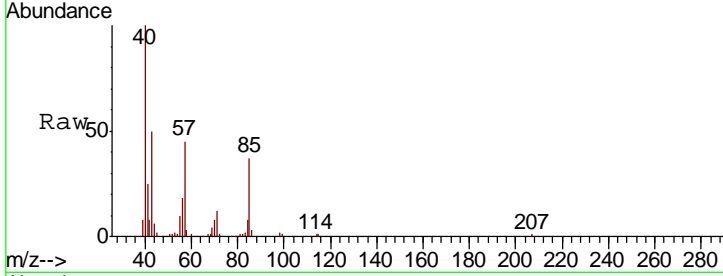




#48
 Methyl methacrylate
 Concen: 1.537 ug/l
 RT: 9.14 min Scan# 2290
 Delta R.T. -0.06 min
 Lab File: VN054441.D
 Acq: 19 Mar 2019 15:26

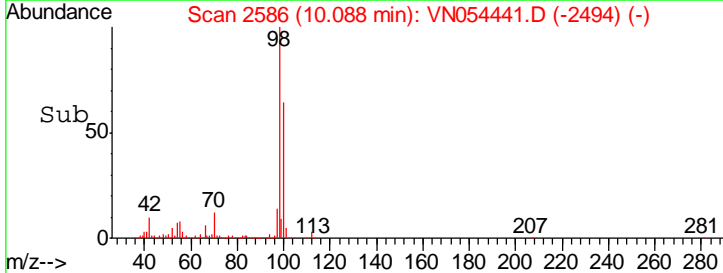
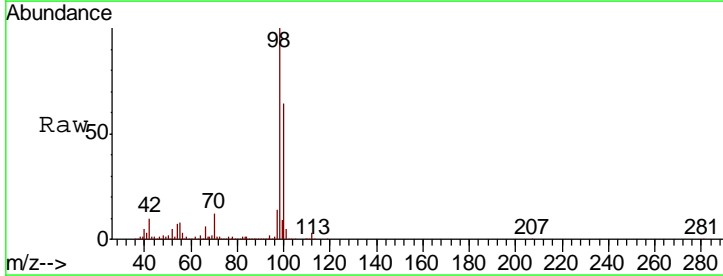
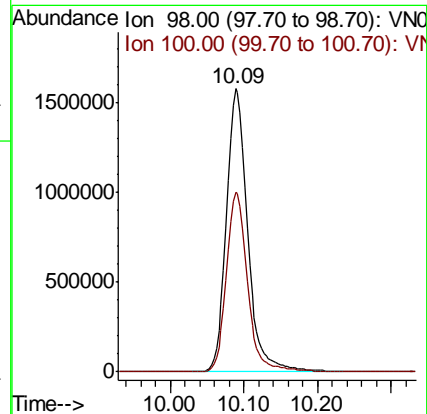
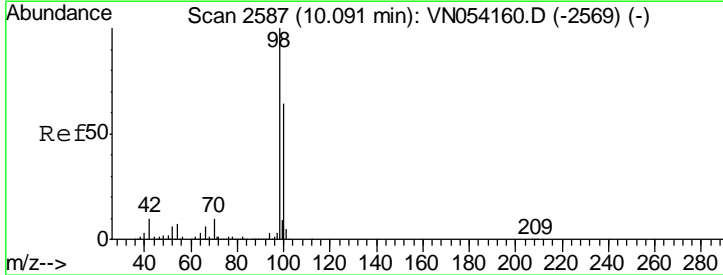
Instrument : MSVOA_N
 ClientSampled : P-3-E.WALL-N.CENTERME

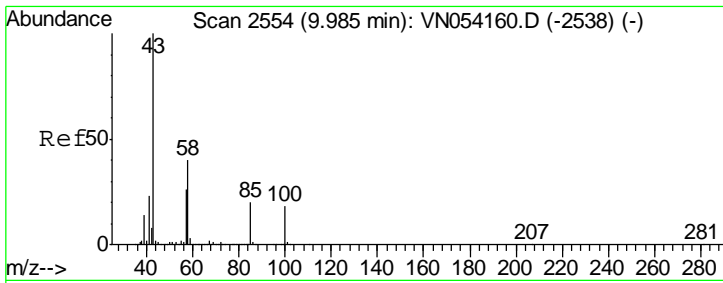
Tgt Ion	Resp	Lower	Upper
41	19175		
69	17.6	72.6	108.8#
39	35.9	47.5	71.3#



#50
 Toluene-d8
 Concen: 50.228 ug/l
 RT: 10.09 min Scan# 2586
 Delta R.T. -0.00 min
 Lab File: VN054441.D
 Acq: 19 Mar 2019 15:26

Tgt Ion	Resp	Lower	Upper
98	3167072		
100	63.4	51.2	76.8

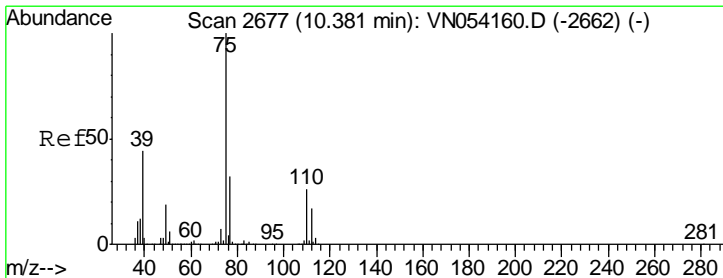
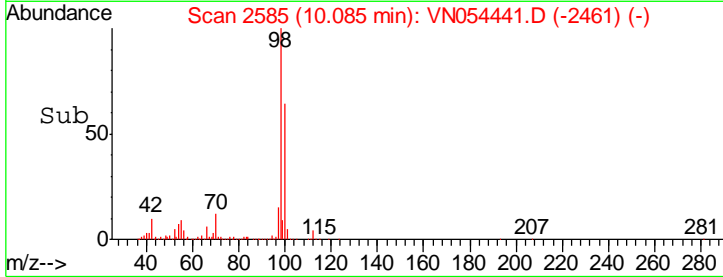
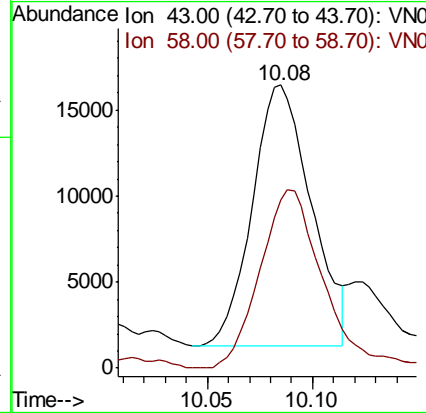
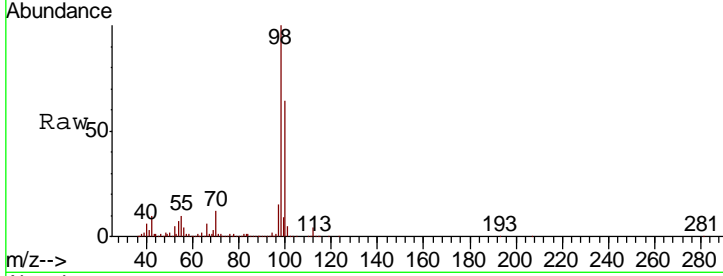




#51
 4-Methyl-2-Pentanone
 Concen: 2.267 ug/l
 RT: 10.08 min Scan# 2585
 Delta R.T. 0.10 min
 Lab File: VN054441.D
 Acq: 19 Mar 2019 15:26

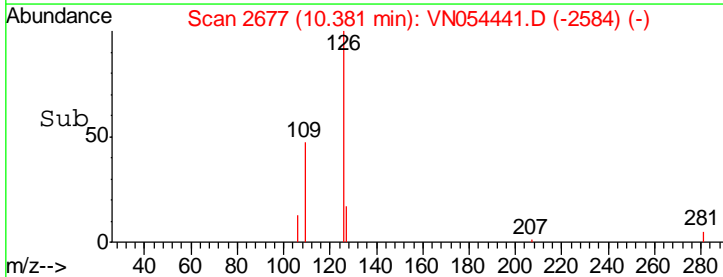
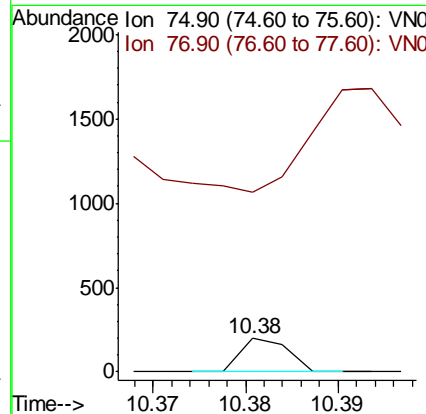
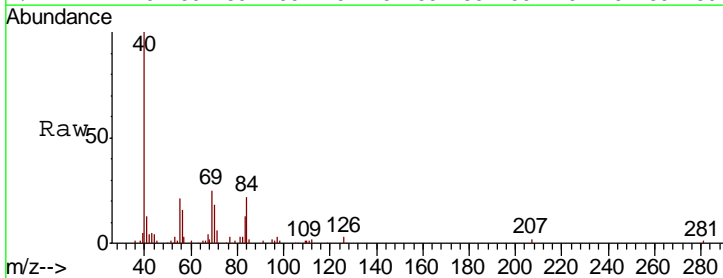
Instrument : MSVOA_N
 ClientSampled : P-3-E.WALL-N.CENTERME

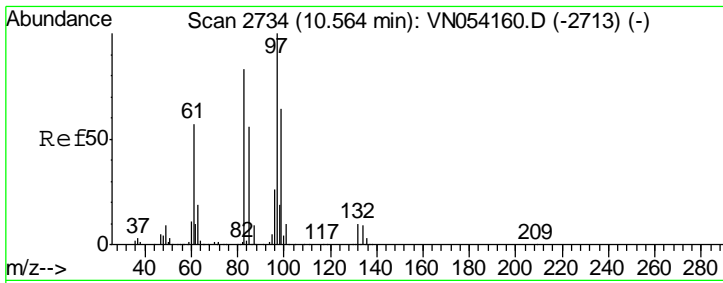
Tgt Ion	Resp	Lower	Upper
43	100		
58	73.6	31.8	47.6#



#53
 t-1,3-Dichloropropene
 Concen: 1.988 ug/l
 RT: 10.38 min Scan# 2677
 Delta R.T. 0.00 min
 Lab File: VN054441.D
 Acq: 19 Mar 2019 15:26

Tgt Ion	Resp	Lower	Upper
75	100		
77	0.0	25.8	38.8#

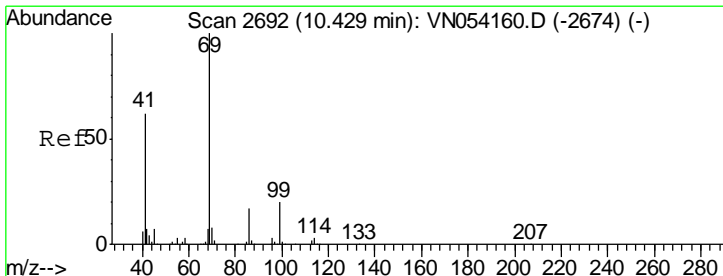
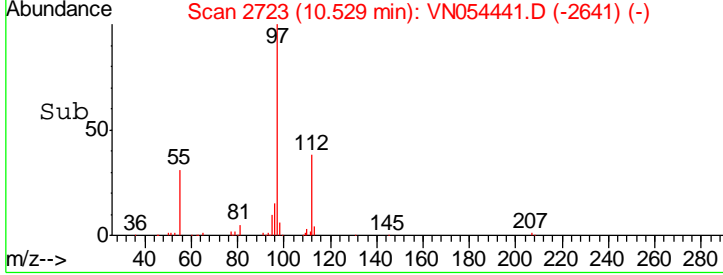
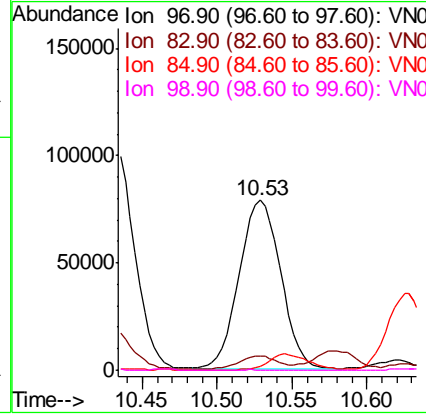
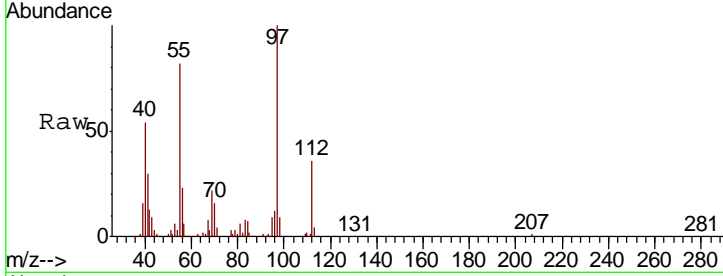




#55
 1,1,2-Trichloroethane
 Concen: 9.409 ug/l
 RT: 10.53 min Scan# 2723
 Delta R.T. -0.04 min
 Lab File: VN054441.D
 Acq: 19 Mar 2019 15:26

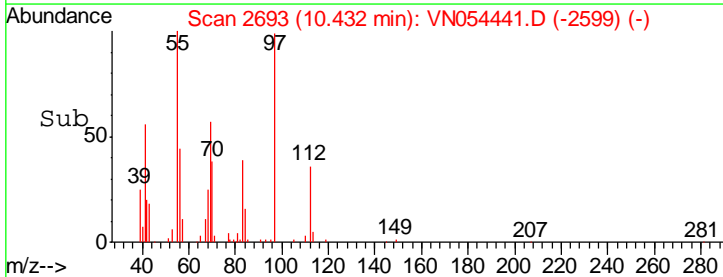
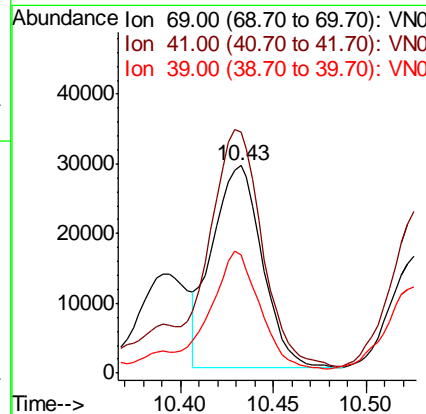
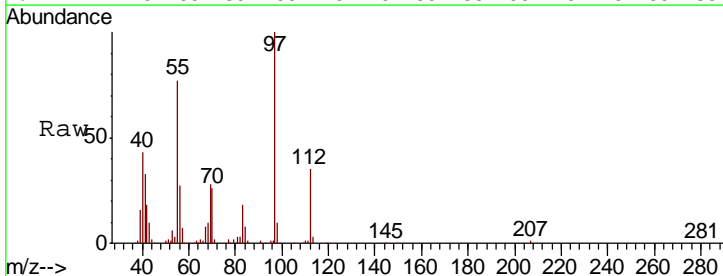
Instrument : MSVOA_N
 ClientSampled : P-3-E.WALL-N.CENTERME

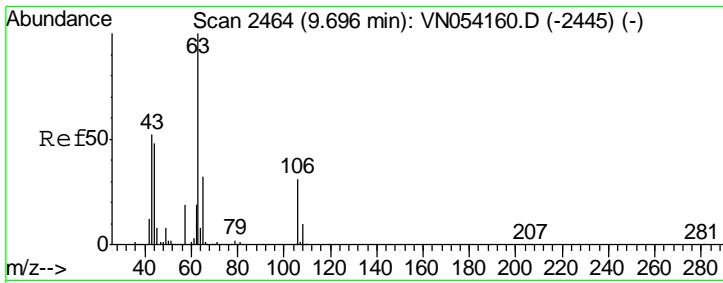
Tgt Ion	Resp	Lower	Upper
97	151972		
83	7.6	66.6	100.0#
85	2.1	44.4	66.6#
99	0.3	50.8	76.2#



#56
 Ethyl methacrylate
 Concen: 2.808 ug/l
 RT: 10.43 min Scan# 2693
 Delta R.T. 0.00 min
 Lab File: VN054441.D
 Acq: 19 Mar 2019 15:26

Tgt Ion	Resp	Lower	Upper
69	54078		
41	121.8	49.4	74.2#
39	56.6	28.3	42.5#

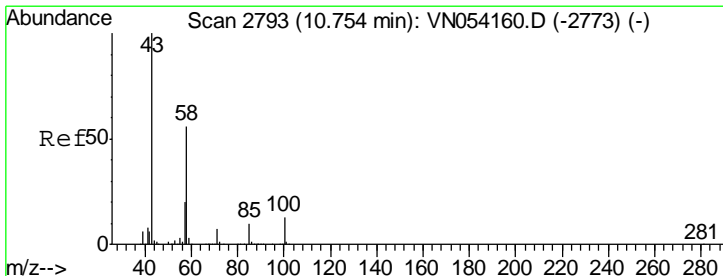
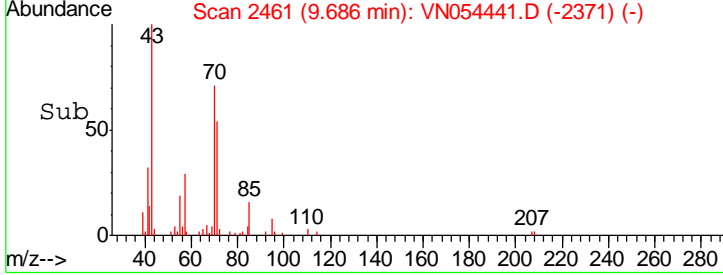
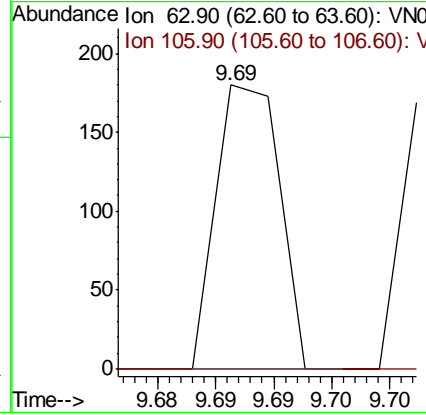
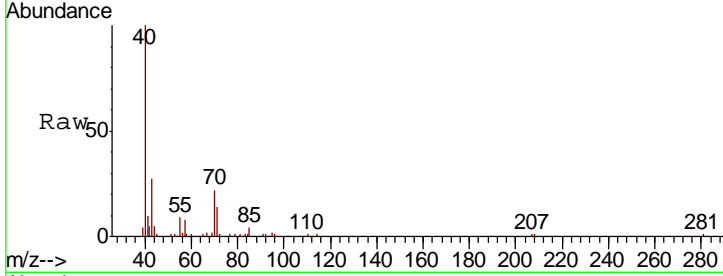




#58
 2-Chloroethyl Vinyl ether
 Concen: 16.836 ug/l
 RT: 9.69 min Scan# 2461
 Delta R.T. -0.01 min
 Lab File: VN054441.D
 Acq: 19 Mar 2019 15:26

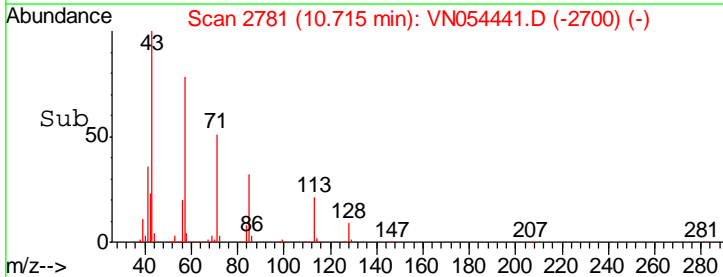
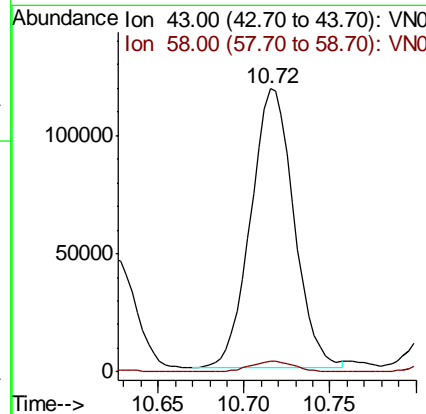
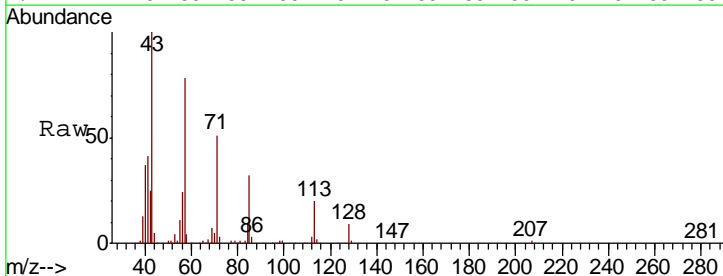
Instrument : MSVOA_N
 ClientSampled : P-3-E.WALL-N.CENTERME

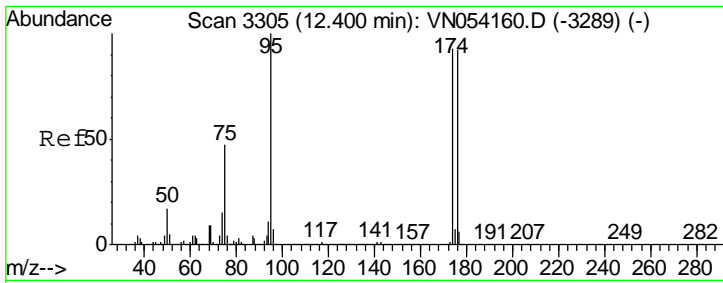
Tgt Ion	Resp	Lower	Upper
63	100		
106	0.0	24.4	36.6#



#59
 2-Hexanone
 Concen: 23.683 ug/l
 RT: 10.72 min Scan# 2781
 Delta R.T. -0.04 min
 Lab File: VN054441.D
 Acq: 19 Mar 2019 15:26

Tgt Ion	Resp	Lower	Upper
43	100		
58	4.0	28.0	83.9#

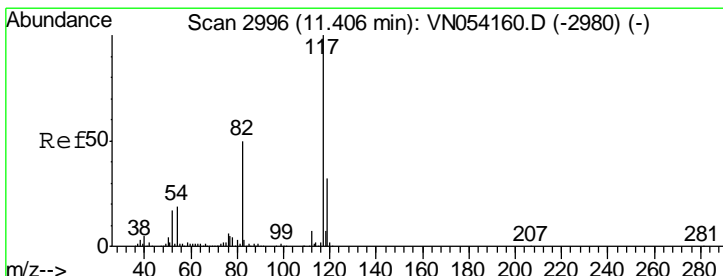
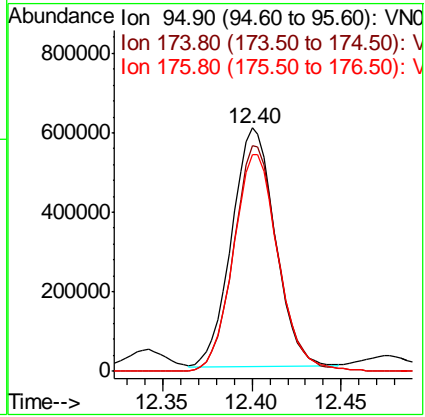
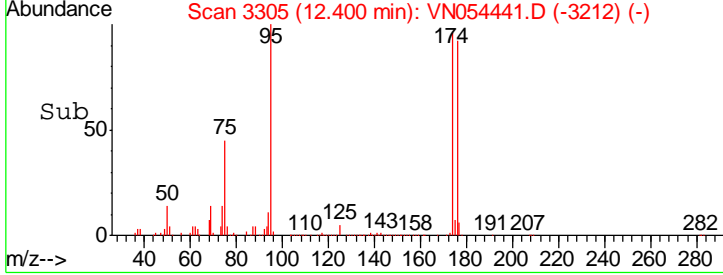
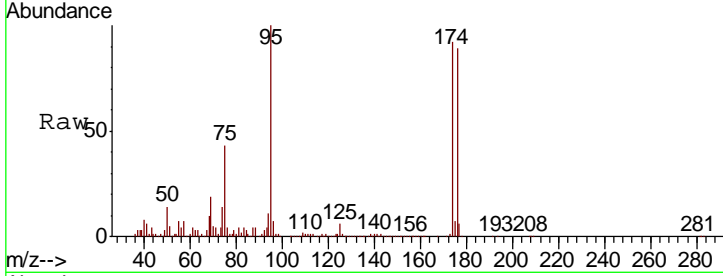




#62
 4-Bromofluorobenzene
 Concen: 46.322 ug/l
 RT: 12.40 min Scan# 3305
 Delta R.T. 0.00 min
 Lab File: VN054441.D
 Acq: 19 Mar 2019 15:26

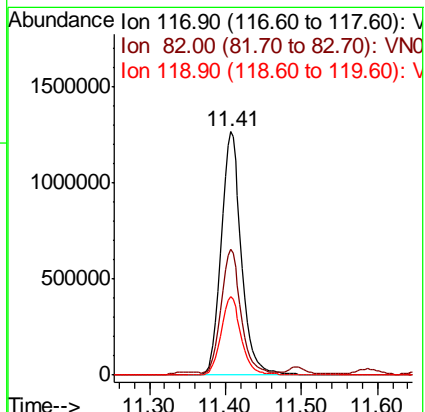
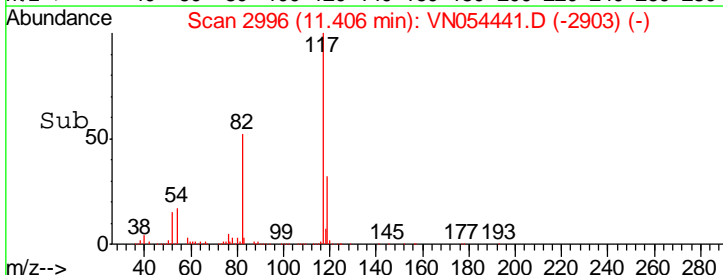
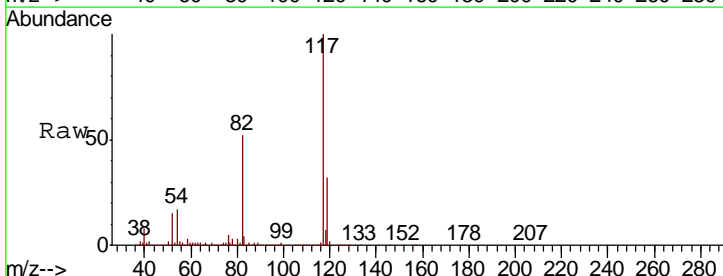
Instrument : MSVOA_N
 ClientSampled : P-3-E.WALL-N.CENTERME

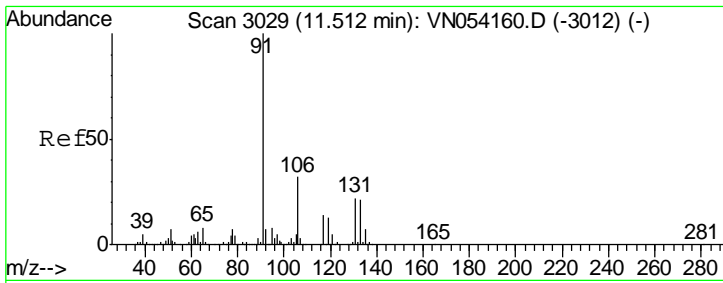
Tgt Ion	Resp	Lower	Upper
95	1021972		
174	95.9	0.0	191.0
176	93.9	0.0	187.4



#63
 Chlorobenzene-d5
 Concen: 50.000 ug/l
 RT: 11.41 min Scan# 2996
 Delta R.T. 0.00 min
 Lab File: VN054441.D
 Acq: 19 Mar 2019 15:26

Tgt Ion	Resp	Lower	Upper
117	2331021		
82	51.2	40.0	60.0
119	32.1	25.8	38.6

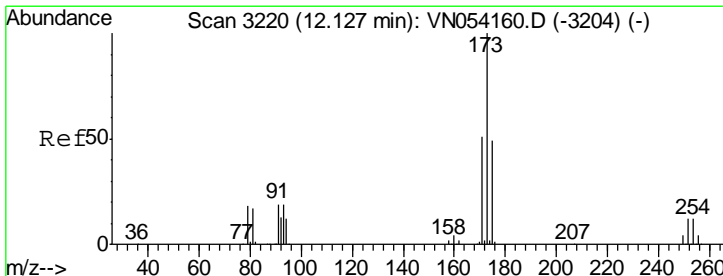
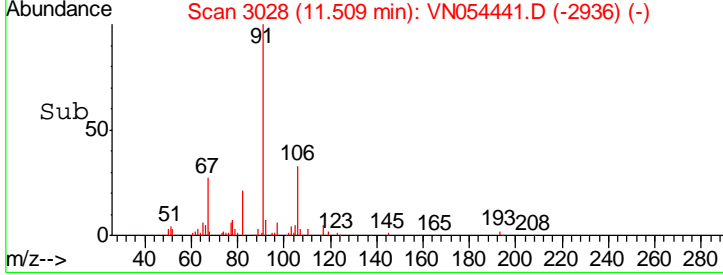
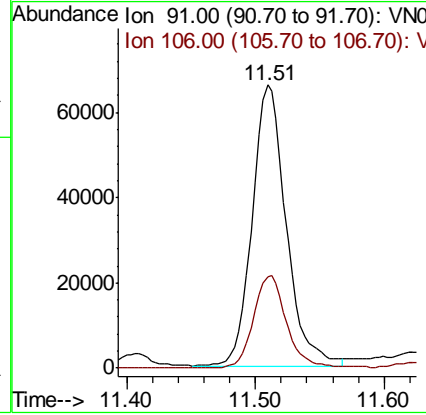
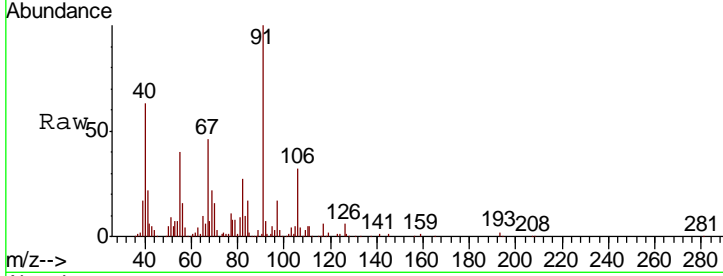




#67
 Ethyl Benzene
 Concen: 1.424 ug/l
 RT: 11.51 min Scan# 3028
 Delta R.T. -0.00 min
 Lab File: VN054441.D
 Acq: 19 Mar 2019 15:26

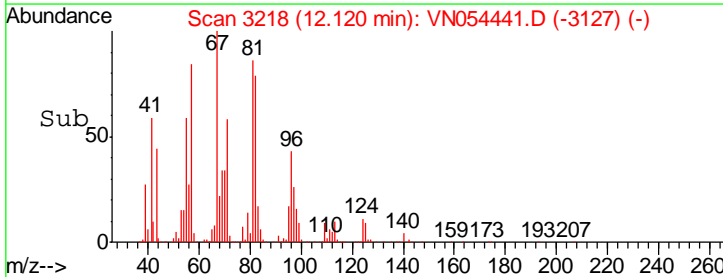
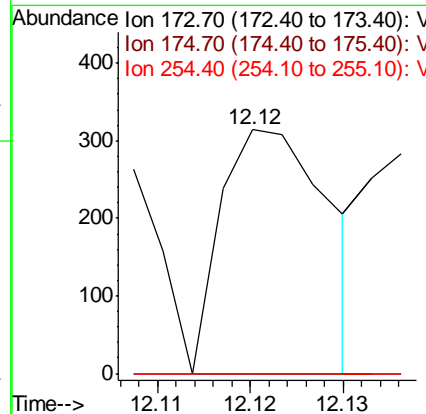
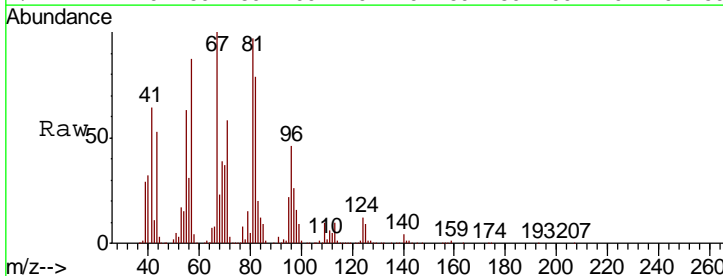
Instrument : MSVOA_N
 ClientSampled : P-3-E.WALL-N.CENTERME

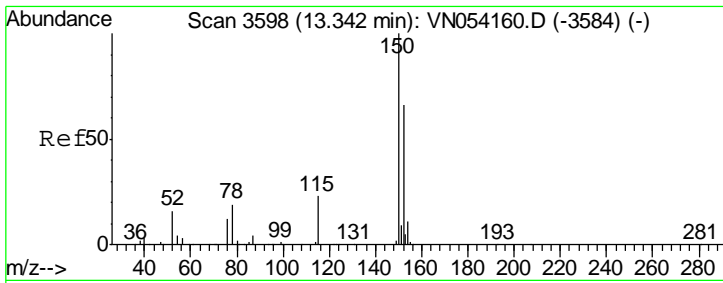
Tgt Ion	Resp	Lower	Upper
91	120850		
106	32.7	25.5	38.3



#71
 Bromoform
 Concen: 2.368 ug/l
 RT: 12.12 min Scan# 3218
 Delta R.T. -0.01 min
 Lab File: VN054441.D
 Acq: 19 Mar 2019 15:26

Tgt Ion	Resp	Lower	Upper
173	100		
175	0.0	24.4	73.2#
254	0.0	0.1	0.1#

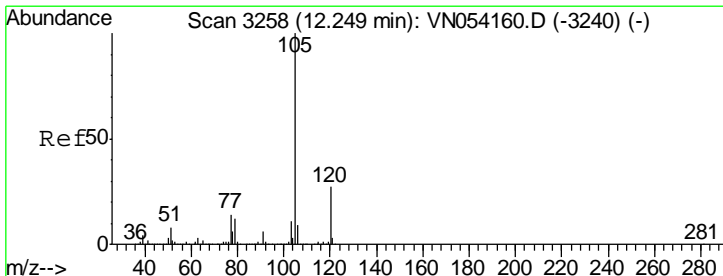
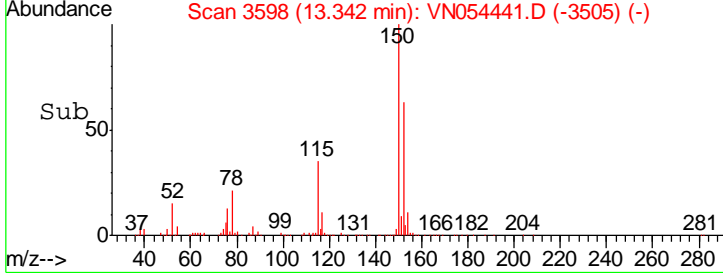
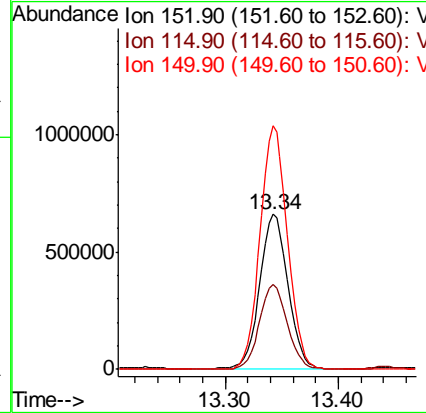
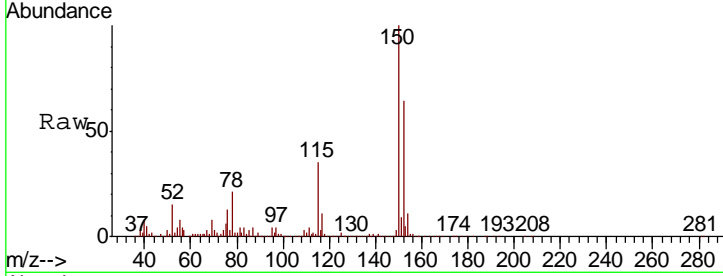




#72
 1,4-Dichlorobenzene-d4
 Concen: 50.000 ug/l
 RT: 13.34 min Scan# 3598
 Delta R.T. 0.00 min
 Lab File: VN054441.D
 Acq: 19 Mar 2019 15:26

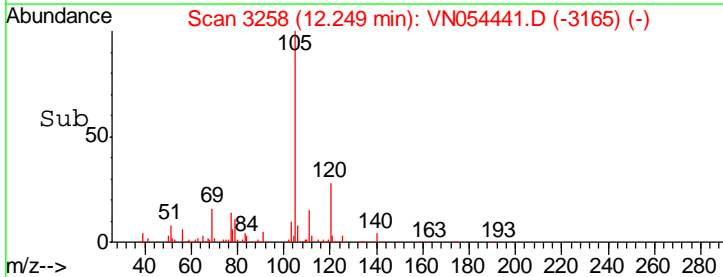
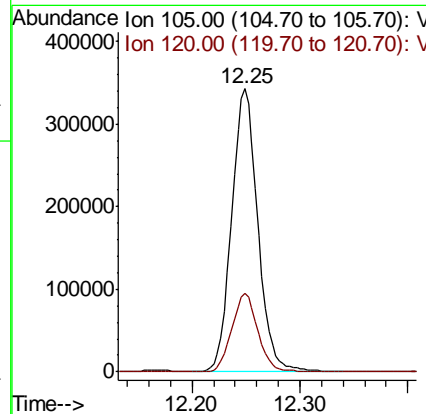
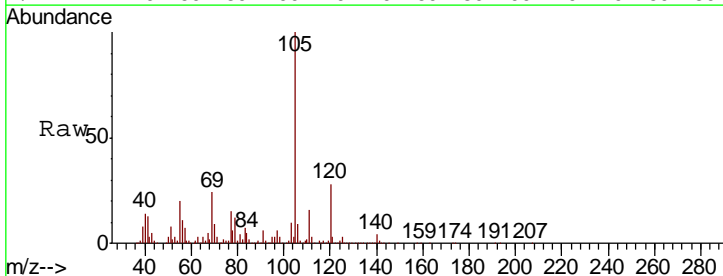
Instrument : MSVOA_N
 ClientSampleId : P-3-E.WALL-N.CENTERME

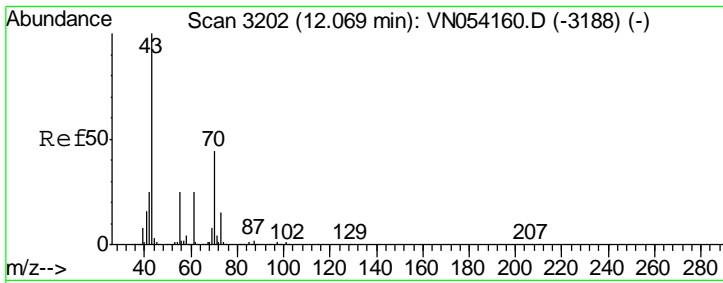
Tgt Ion	Resp	Lower	Upper
152	1149358		
152	100		
115	53.3	27.2	81.6
150	151.4	0.0	349.2



#73
 Isopropylbenzene
 Concen: 6.258 ug/l
 RT: 12.25 min Scan# 3258
 Delta R.T. 0.00 min
 Lab File: VN054441.D
 Acq: 19 Mar 2019 15:26

Tgt Ion	Resp	Lower	Upper
105	575472		
105	100		
120	27.9	13.8	41.3



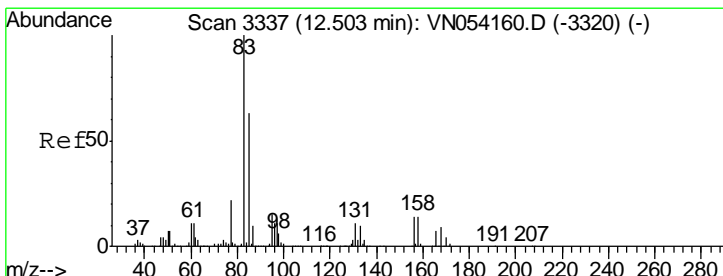
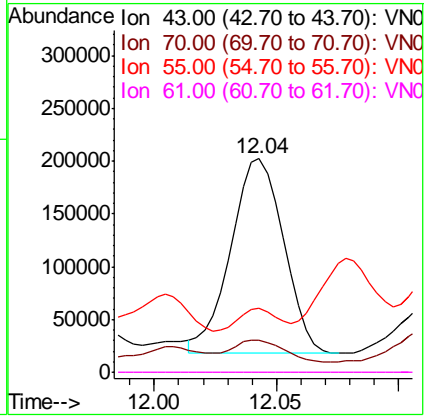
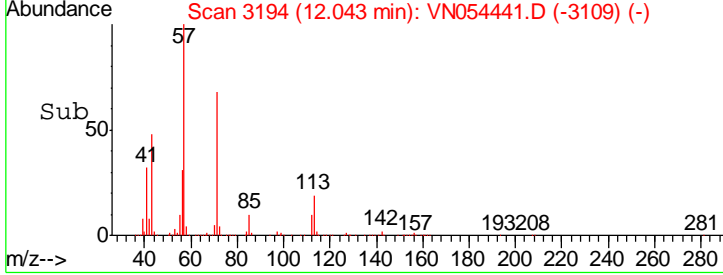
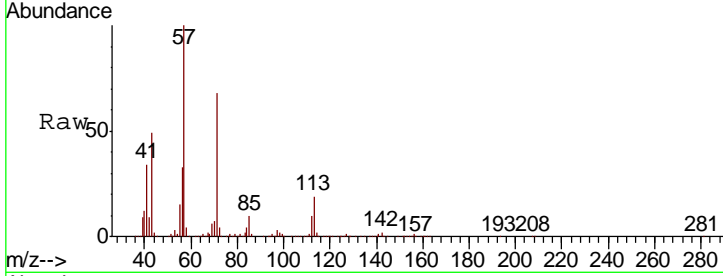


#74
 N-amyI acetate
 Concen: 13.602 ug/l
 RT: 12.04 min Scan# 3194
 Delta R.T. -0.03 min
 Lab File: VN054441.D
 Acq: 19 Mar 2019 15:26

Instrument :
 MSVOA_N
ClientSampled :
 P-3-E.WALL-N.CENTERME

Tgt Ion: 43 Resp: 277636

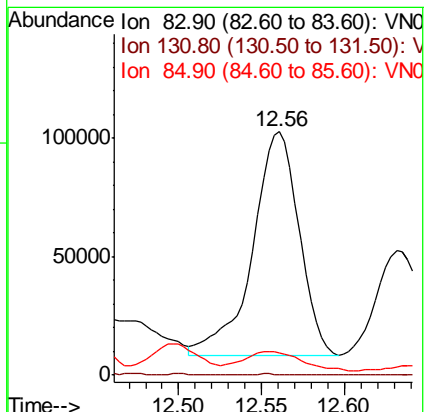
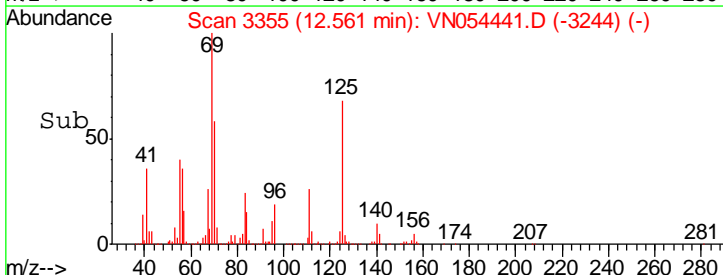
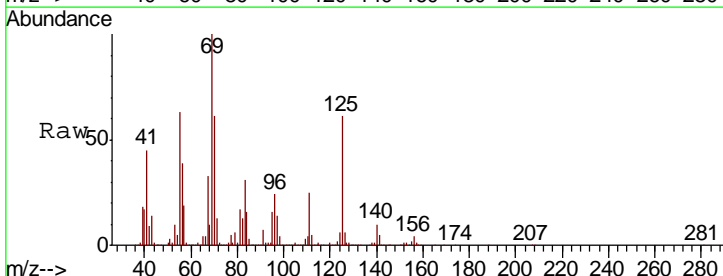
Ion	Ratio	Lower	Upper
43	100		
70	10.8	35.4	53.0#
55	7.9	19.8	29.6#
61	0.0	19.8	29.6#

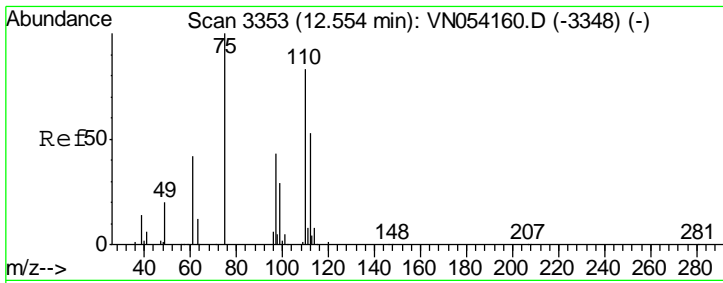


#75
 1,1,2,2-Tetrachloroethane
 Concen: 9.371 ug/l
 RT: 12.56 min Scan# 3355
 Delta R.T. 0.06 min
 Lab File: VN054441.D
 Acq: 19 Mar 2019 15:26

Tgt Ion: 83 Resp: 183591

Ion	Ratio	Lower	Upper
83	100		
131	0.1	5.8	17.4#
85	10.3	32.2	96.6#

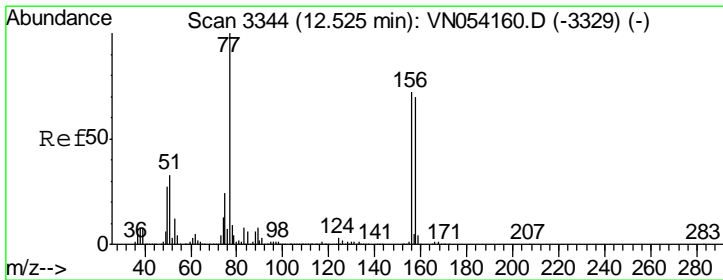
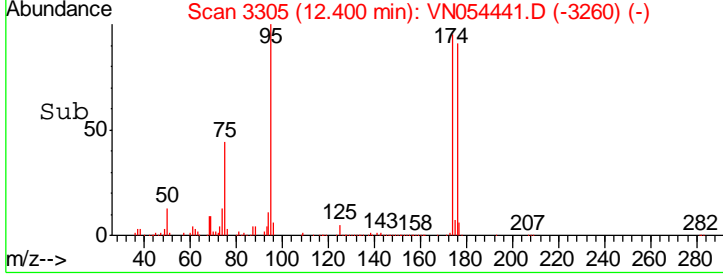
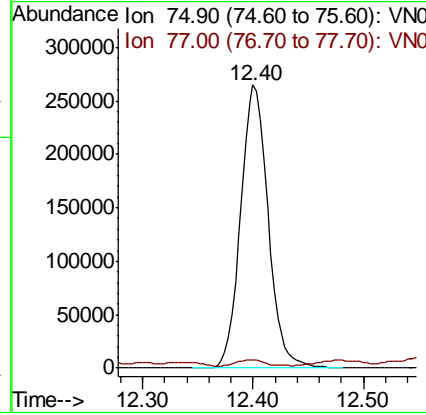
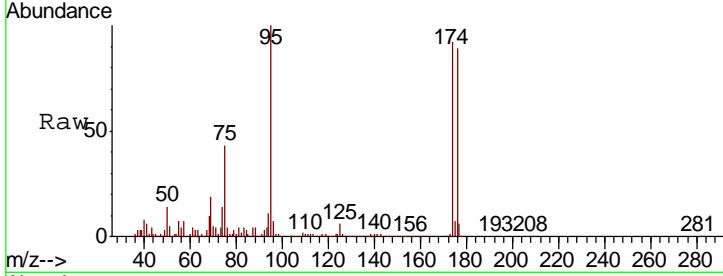




#76
 1,2,3-Trichloropropane
 Concen: 27.009 ug/l
 RT: 12.40 min Scan# 3305
 Delta R.T. -0.15 min
 Lab File: VN054441.D
 Acq: 19 Mar 2019 15:26

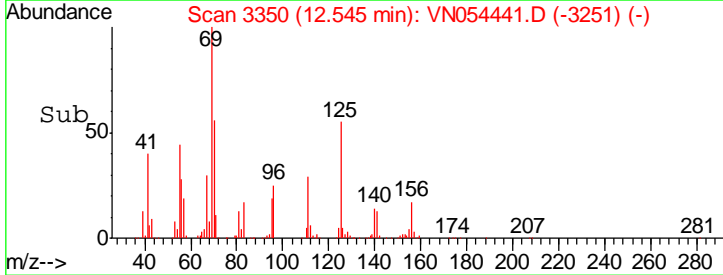
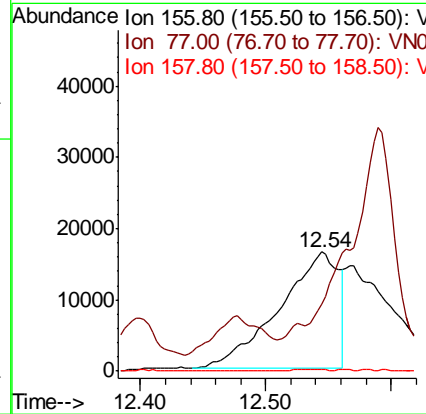
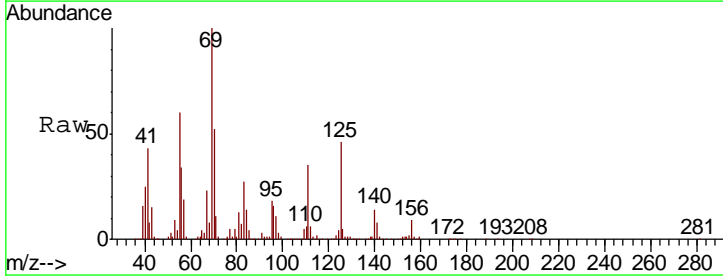
Instrument : MSVOA_N
 ClientSampleId : P-3-E.WALL-N.CENTERME

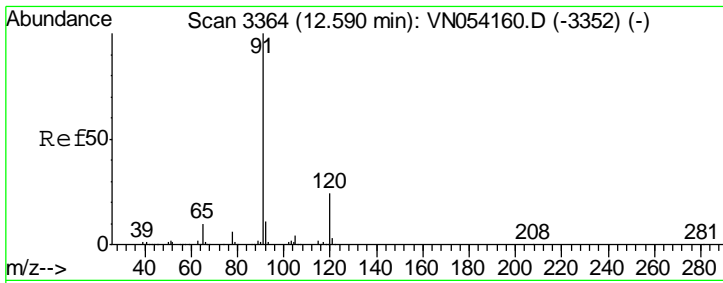
Tgt Ion	Resp	Lower	Upper
75	100		
77	2.2	0.0	0.0#



#77
 Bromobenzene
 Concen: 2.203 ug/l
 RT: 12.54 min Scan# 3350
 Delta R.T. 0.02 min
 Lab File: VN054441.D
 Acq: 19 Mar 2019 15:26

Tgt Ion	Resp	Lower	Upper
156	100		
77	0.0	81.5	244.4#
158	0.4	49.0	147.2#

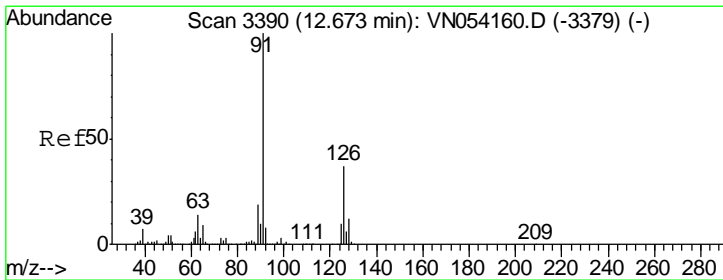
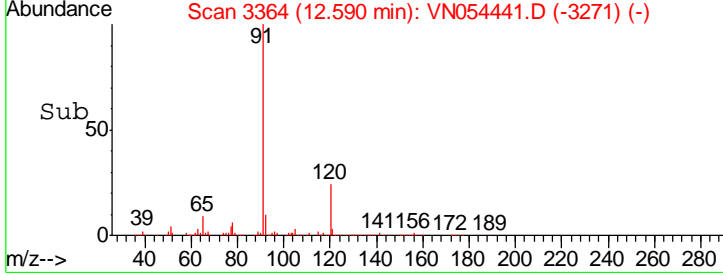
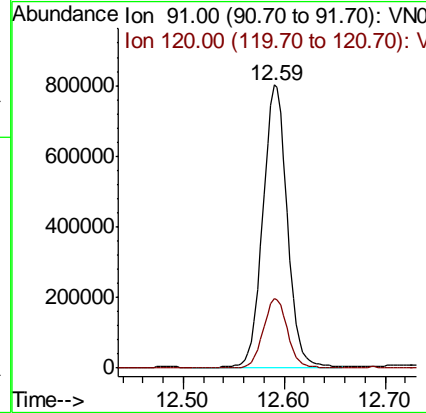
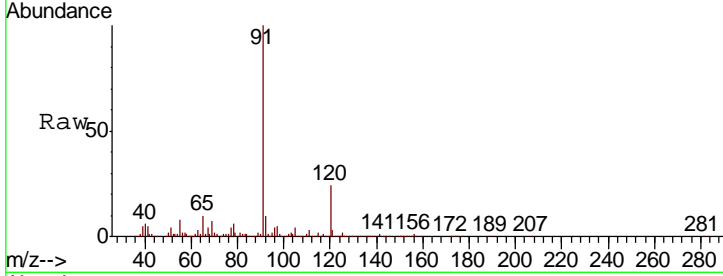




#78
 n-propylbenzene
 Concen: 13.367 ug/l
 RT: 12.59 min Scan# 3364
 Delta R.T. 0.00 min
 Lab File: VN054441.D
 Acq: 19 Mar 2019 15:26

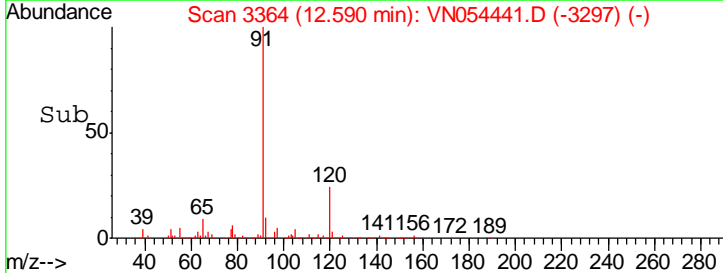
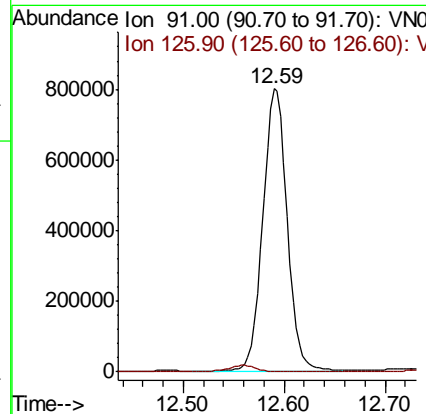
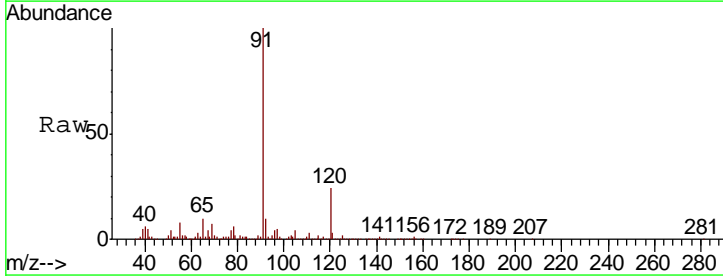
Instrument : MSVOA_N
 ClientSampled : P-3-E.WALL-N.CENTERME

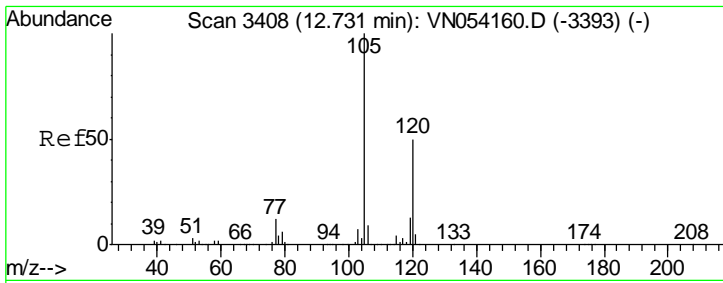
Tgt Ion	Resp	Lower	Upper
91	100		
120	24.6	12.3	36.9



#79
 2-Chlorotoluene
 Concen: 22.230 ug/l
 RT: 12.59 min Scan# 3364
 Delta R.T. -0.08 min
 Lab File: VN054441.D
 Acq: 19 Mar 2019 15:26

Tgt Ion	Resp	Lower	Upper
91	100		
126	0.0	18.7	56.1#

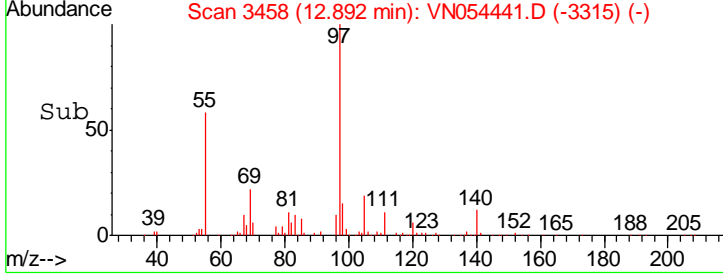
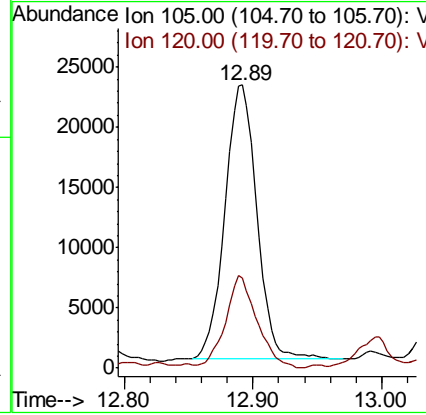
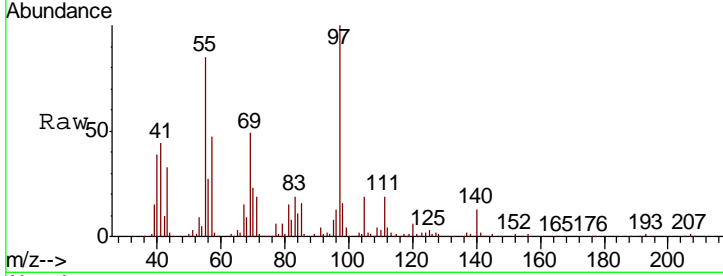




#80
 1,3,5-Trimethylbenzene
 Concen: 0.513 ug/l
 RT: 12.89 min Scan# 3458
 Delta R.T. 0.16 min
 Lab File: VN054441.D
 Acq: 19 Mar 2019 15:26

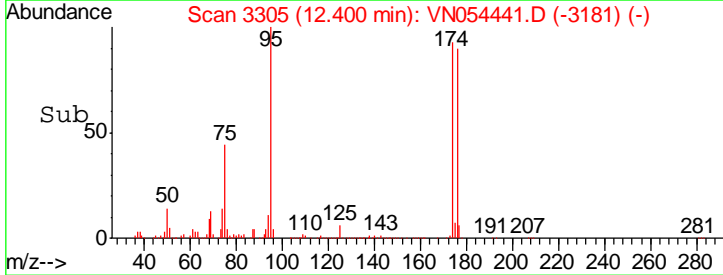
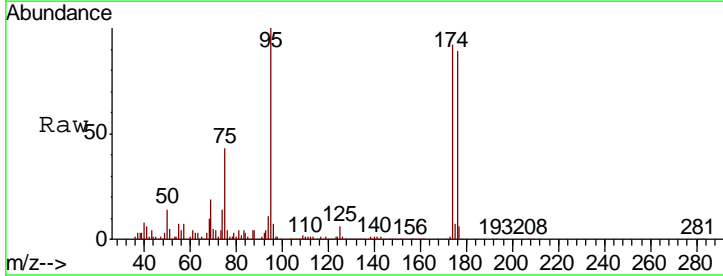
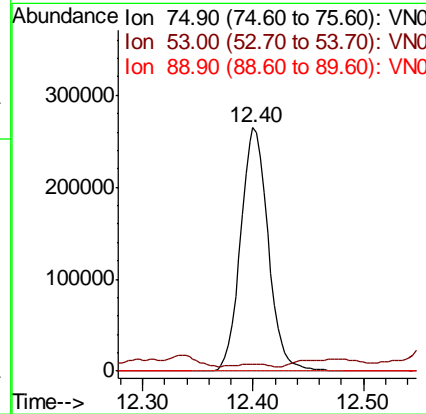
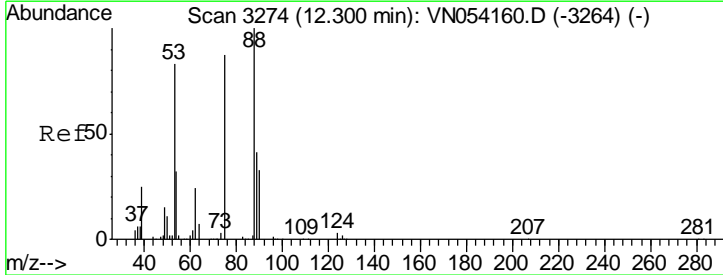
Instrument : MSVOA_N
 ClientSampled : P-3-E.WALL-N.CENTERME

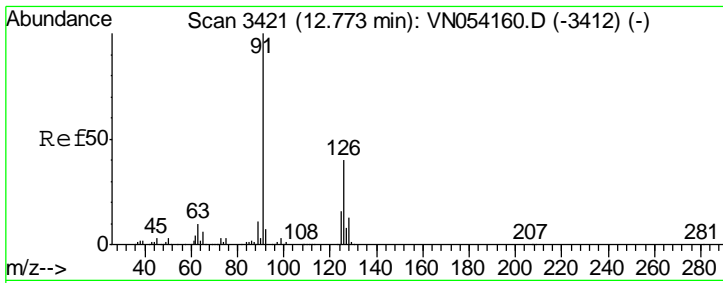
Tgt Ion	Resp	Lower	Upper
105	39215		
120	33.3	25.0	75.0



#81
 trans-1,4-Dichloro-2-butene
 Concen: 92.328 ug/l
 RT: 12.40 min Scan# 3305
 Delta R.T. 0.10 min
 Lab File: VN054441.D
 Acq: 19 Mar 2019 15:26

Tgt Ion	Resp	Lower	Upper
75	456499		
53	1.0	76.2	114.2#
89	0.0	39.2	58.8#



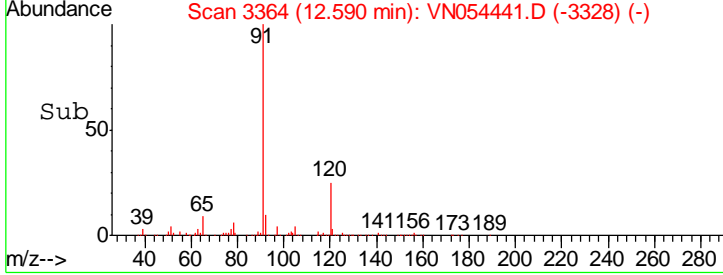
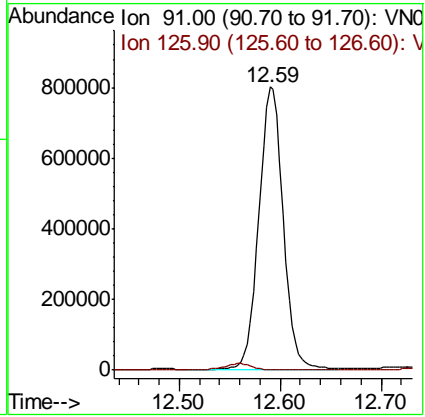
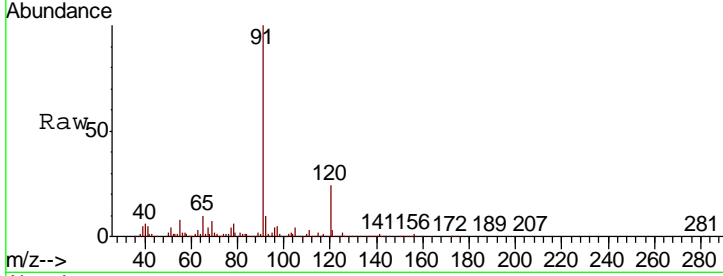


#82
 4-Chlorotoluene
 Concen: 22.263 ug/l
 RT: 12.59 min Scan# 3364
 Delta R.T. -0.18 min
 Lab File: VN054441.D
 Acq: 19 Mar 2019 15:26

Instrument : MSVOA_N
 ClientSampled : P-3-E.WALL-N.CENTERME

Tgt Ion: 91 Resp: 1333683

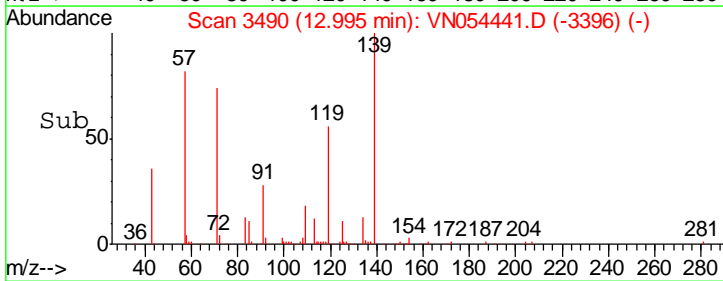
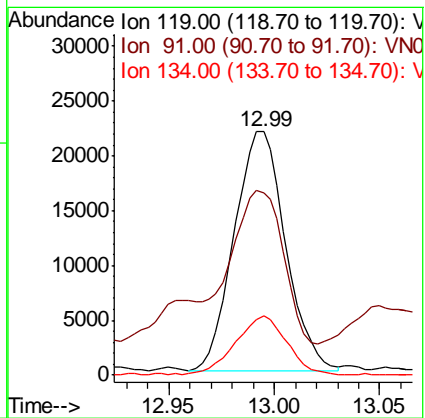
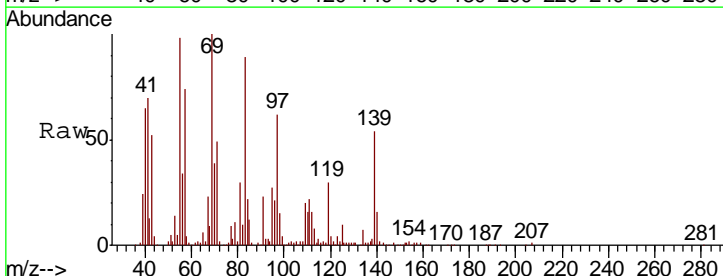
Ion	Ratio	Lower	Upper
91	100		
126	0.0	18.1	54.1#

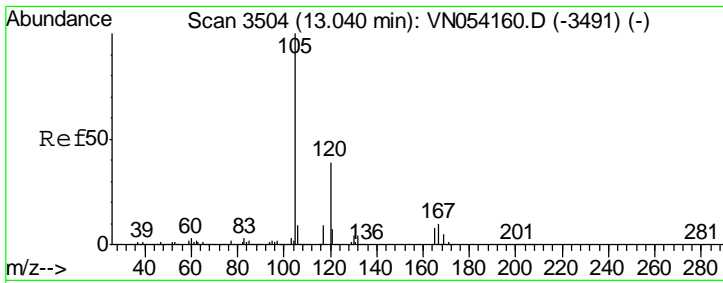


#83
 tert-Butylbenzene
 Concen: 0.523 ug/l
 RT: 12.99 min Scan# 3490
 Delta R.T. 0.00 min
 Lab File: VN054441.D
 Acq: 19 Mar 2019 15:26

Tgt Ion: 119 Resp: 36822

Ion	Ratio	Lower	Upper
119	100		
91	64.0	30.9	92.8
134	0.0	13.2	39.6#

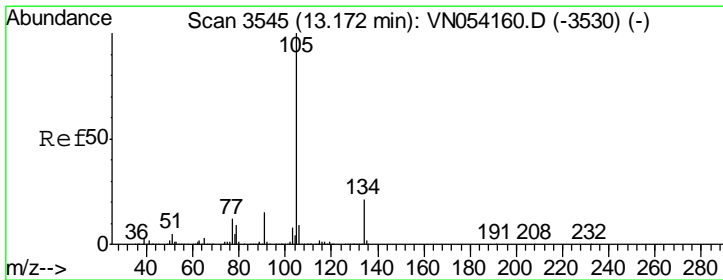
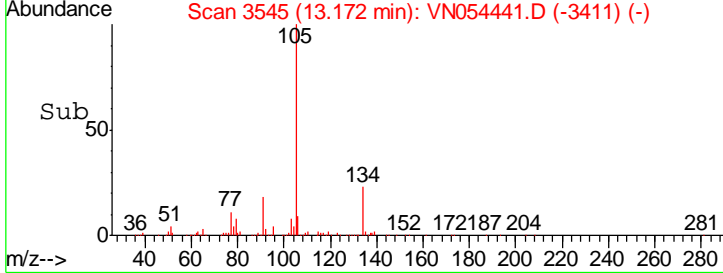
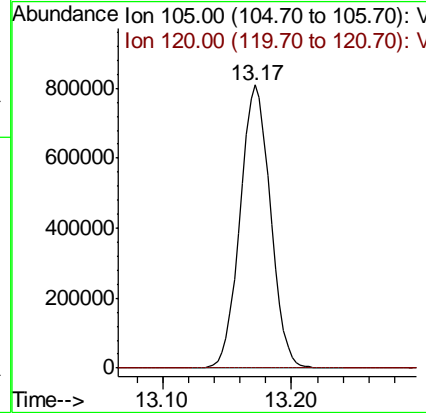
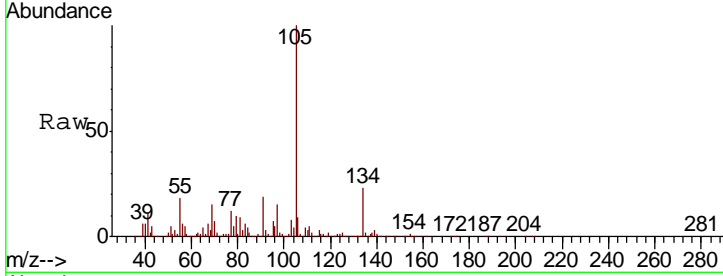




#84
 1,2,4-Trimethylbenzene
 Concen: 17.582 ug/l
 RT: 13.17 min Scan# 3545
 Delta R.T. 0.13 min
 Lab File: VN054441.D
 Acq: 19 Mar 2019 15:26

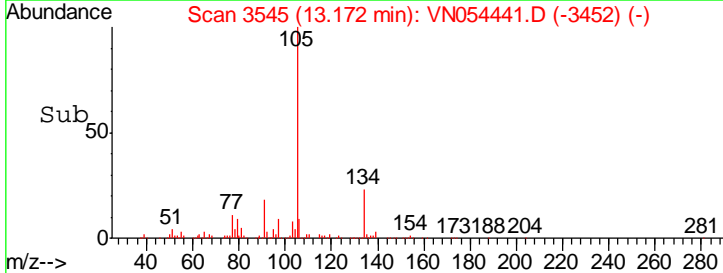
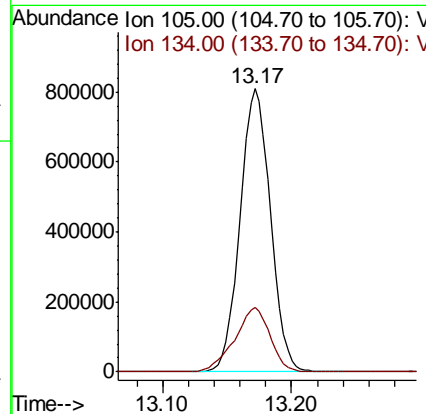
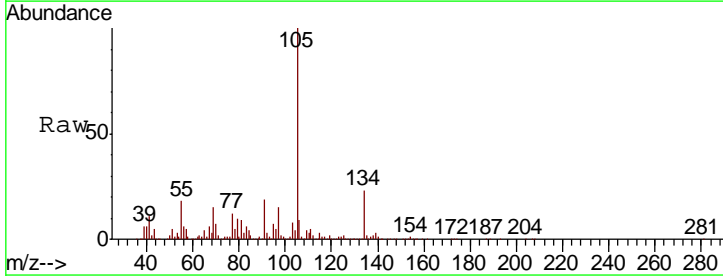
Instrument : MSVOA_N
 ClientSampled : P-3-E.WALL-N.CENTERME

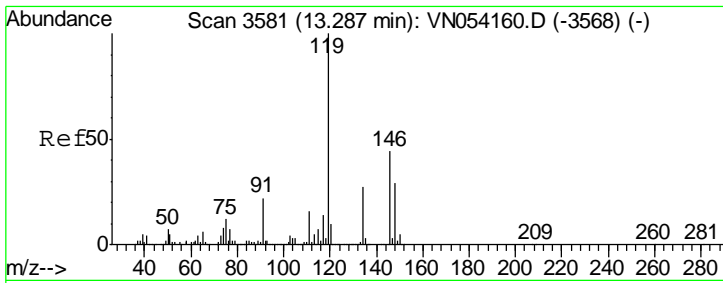
Tgt Ion	Resp	Lower	Upper
105	100		
120	0.2	23.4	70.3#



#85
 sec-Butylbenzene
 Concen: 14.450 ug/l
 RT: 13.17 min Scan# 3545
 Delta R.T. 0.00 min
 Lab File: VN054441.D
 Acq: 19 Mar 2019 15:26

Tgt Ion	Resp	Lower	Upper
105	100		
134	26.6	10.7	32.1

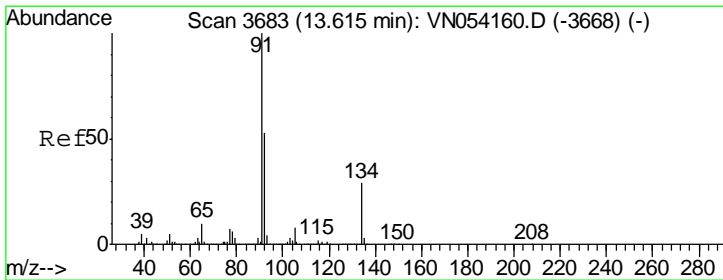
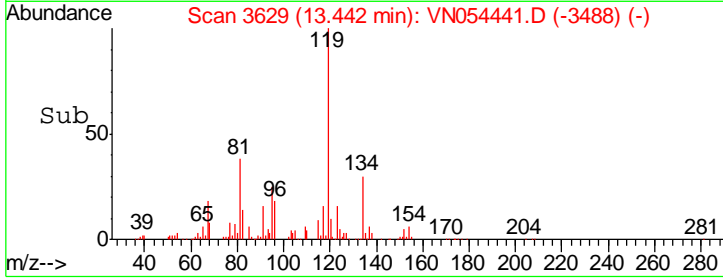
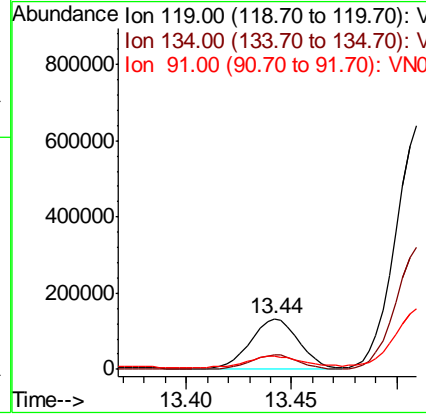
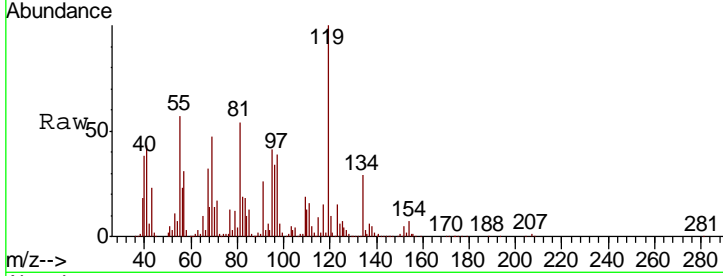




#86
 p-Isopropyltoluene
 Concen: 2.611 ug/l
 RT: 13.44 min Scan# 3629
 Delta R.T. 0.15 min
 Lab File: VN054441.D
 Acq: 19 Mar 2019 15:26

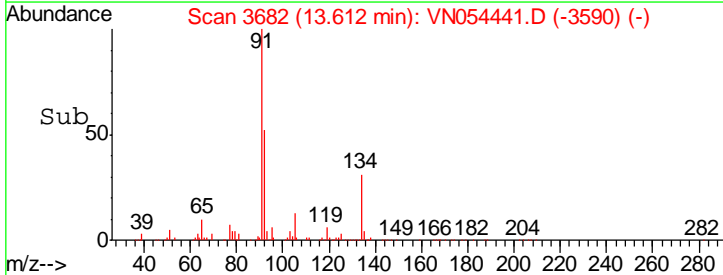
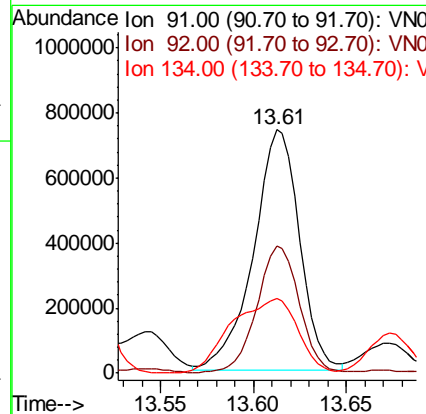
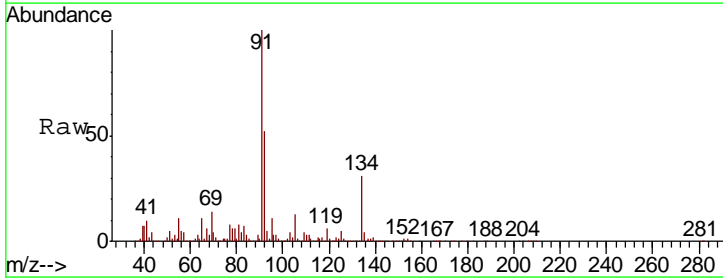
Instrument : MSVOA_N
 ClientSampled : P-3-E.WALL-N.CENTERME

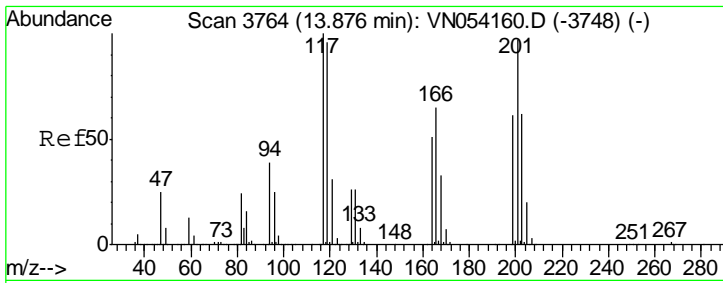
Tgt Ion	Resp	Lower	Upper
119	100		
134	29.0	13.6	40.8
91	26.6	11.1	33.3



#89
 n-Butylbenzene
 Concen: 21.029 ug/l
 RT: 13.61 min Scan# 3682
 Delta R.T. -0.00 min
 Lab File: VN054441.D
 Acq: 19 Mar 2019 15:26

Tgt Ion	Resp	Lower	Upper
91	100		
92	47.7	26.2	78.6
134	44.3	14.3	42.9#

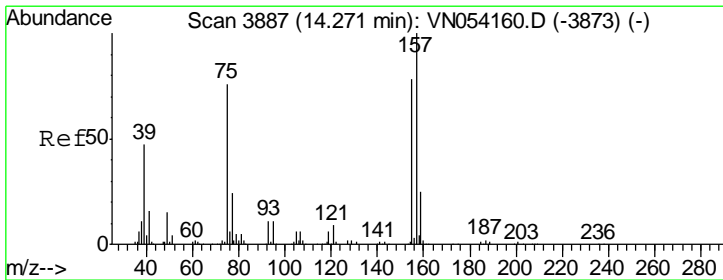
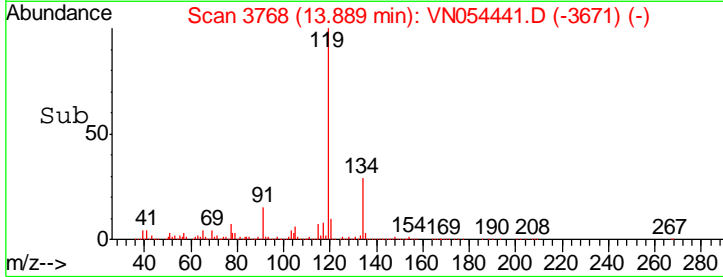
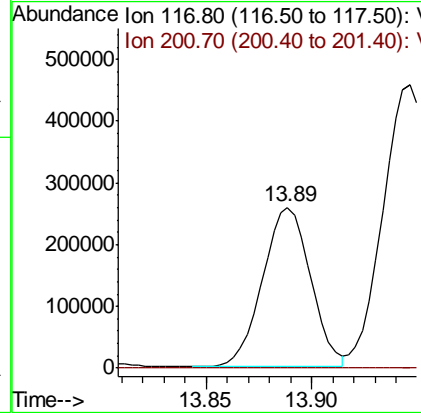
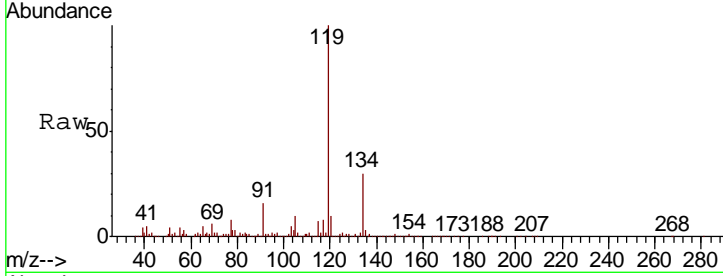




#90
 Hexachloroethane
 Concen: 30.723 ug/l
 RT: 13.89 min Scan# 3768
 Delta R.T. 0.01 min
 Lab File: VN054441.D
 Acq: 19 Mar 2019 15:26

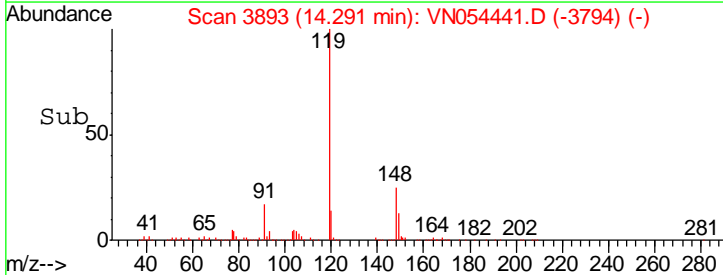
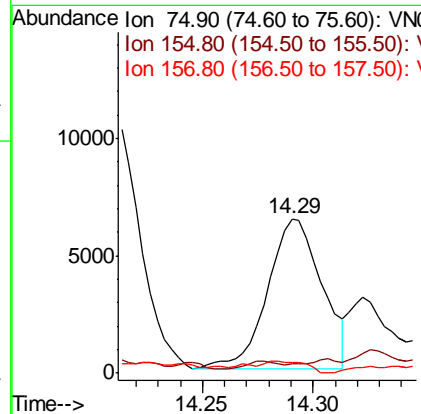
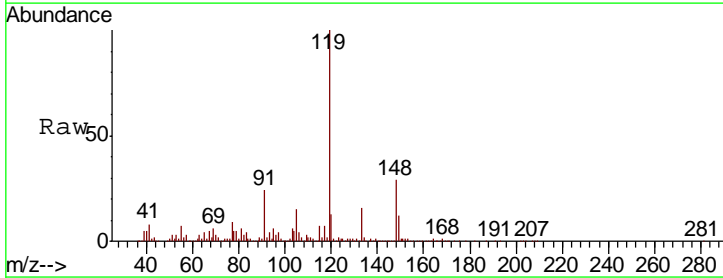
Instrument : MSVOA_N
 ClientSampled : P-3-E.WALL-N.CENTERME

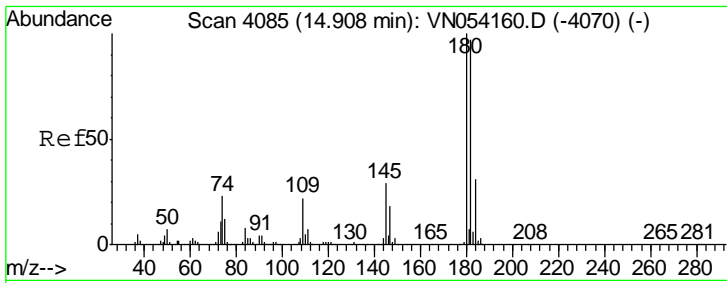
Tgt Ion: 117 Resp: 407482
 Ion Ratio Lower Upper
 117 100
 201 0.0 48.1 144.4#



#92
 1,2-Dibromo-3-Chloropropane
 Concen: 3.563 ug/l
 RT: 14.29 min Scan# 3893
 Delta R.T. 0.02 min
 Lab File: VN054441.D
 Acq: 19 Mar 2019 15:26

Tgt Ion: 75 Resp: 10802
 Ion Ratio Lower Upper
 75 100
 155 0.0 50.1 150.3#
 157 6.1 63.1 189.3#

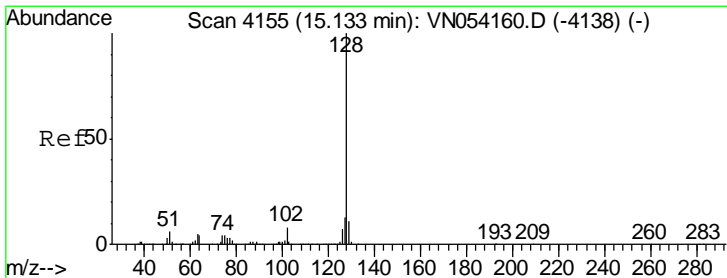
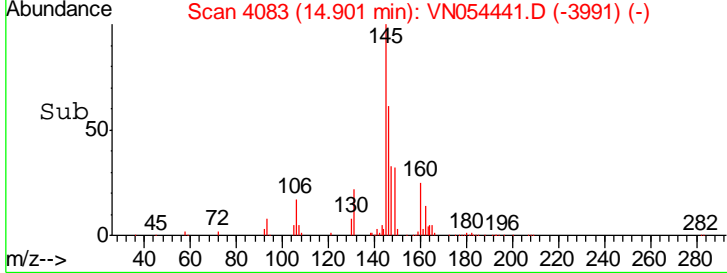
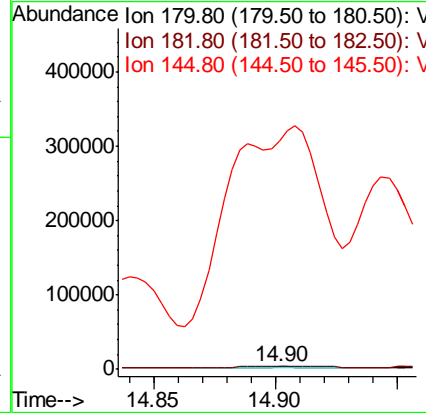
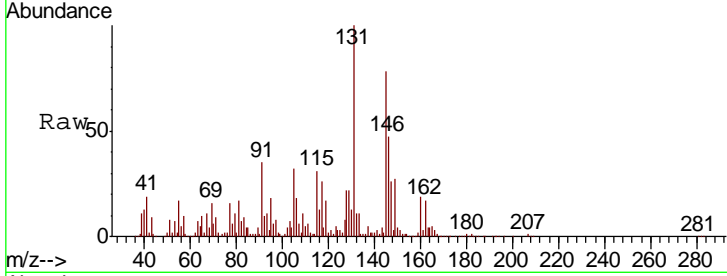




#93
 1,2,4-Trichlorobenzene
 Concen: 2.686 ug/l
 RT: 14.90 min Scan# 4083
 Delta R.T. -0.01 min
 Lab File: VN054441.D
 Acq: 19 Mar 2019 15:26

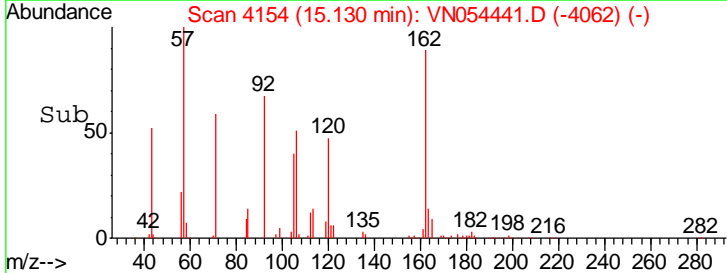
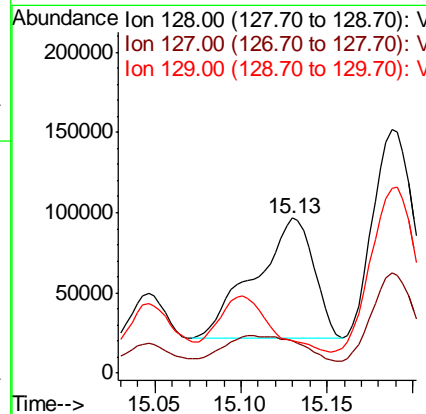
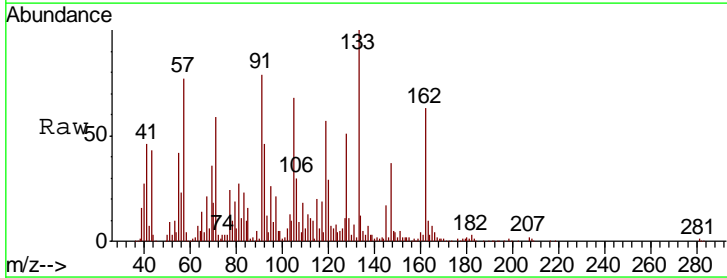
Instrument :
 MSVOA_N
ClientSampled :
 P-3-E.WALL-N.CENTERME

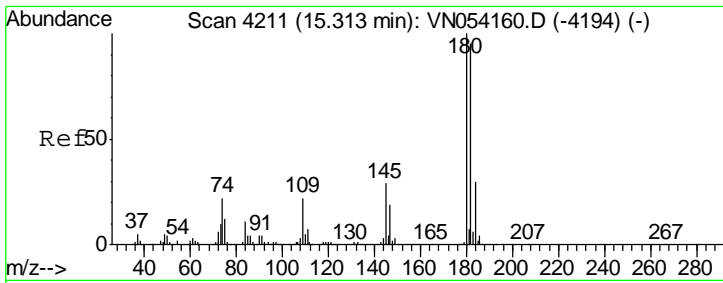
Tgt Ion	Resp	Lower	Upper
180	4326		
182	96.6	48.0	144.2
145	0.0	14.2	42.8#



#95
 Naphthalene
 Concen: 6.765 ug/l
 RT: 15.13 min Scan# 4154
 Delta R.T. -0.00 min
 Lab File: VN054441.D
 Acq: 19 Mar 2019 15:26

Tgt Ion	Resp	Lower	Upper
128	178521		
127	0.0	10.1	15.1#
129	0.0	8.7	13.1#





#96
 1,2,3-Trichlorobenzene
 Concen: 0.260 ug/l
 RT: 15.34 min Scan# 4218
 Delta R.T. 0.02 min
 Lab File: VN054441.D
 Acq: 19 Mar 2019 15:26

Instrument : MSVOA_N
 ClientSampled : P-3-E.WALL-N.CENTERME

Tgt Ion	Resp	Lower	Upper
180	100		
182	0.0	47.5	142.6#
145	0.0	14.8	44.3#

