

Data Path : Z:\VOASRV\HPCHEM1\MSVOA N\DATA\VN031920\
 Data File : VN060635.D
 Acq On : 19 Mar 2020 14:37
 Operator : JC/MD
 Sample : PB127661ZHE#07
 Misc : 5.00mL/MSVOA N/WATER
 ALS Vial : 14 Sample Multiplier: 1

Instrument :
 MSVOA_N
 ClientSampleId :
 PB127661ZHE#07

Quant Time: Mar 20 07:30:20 2020
 Quant Method : Z:\VOASRV\HPCHEM1\MSVOA_N\METHODS\82N031820W.M
 Quant Title : SW846 8260
 QLast Update : Wed Mar 18 08:49:09 2020
 Response via : Initial Calibration

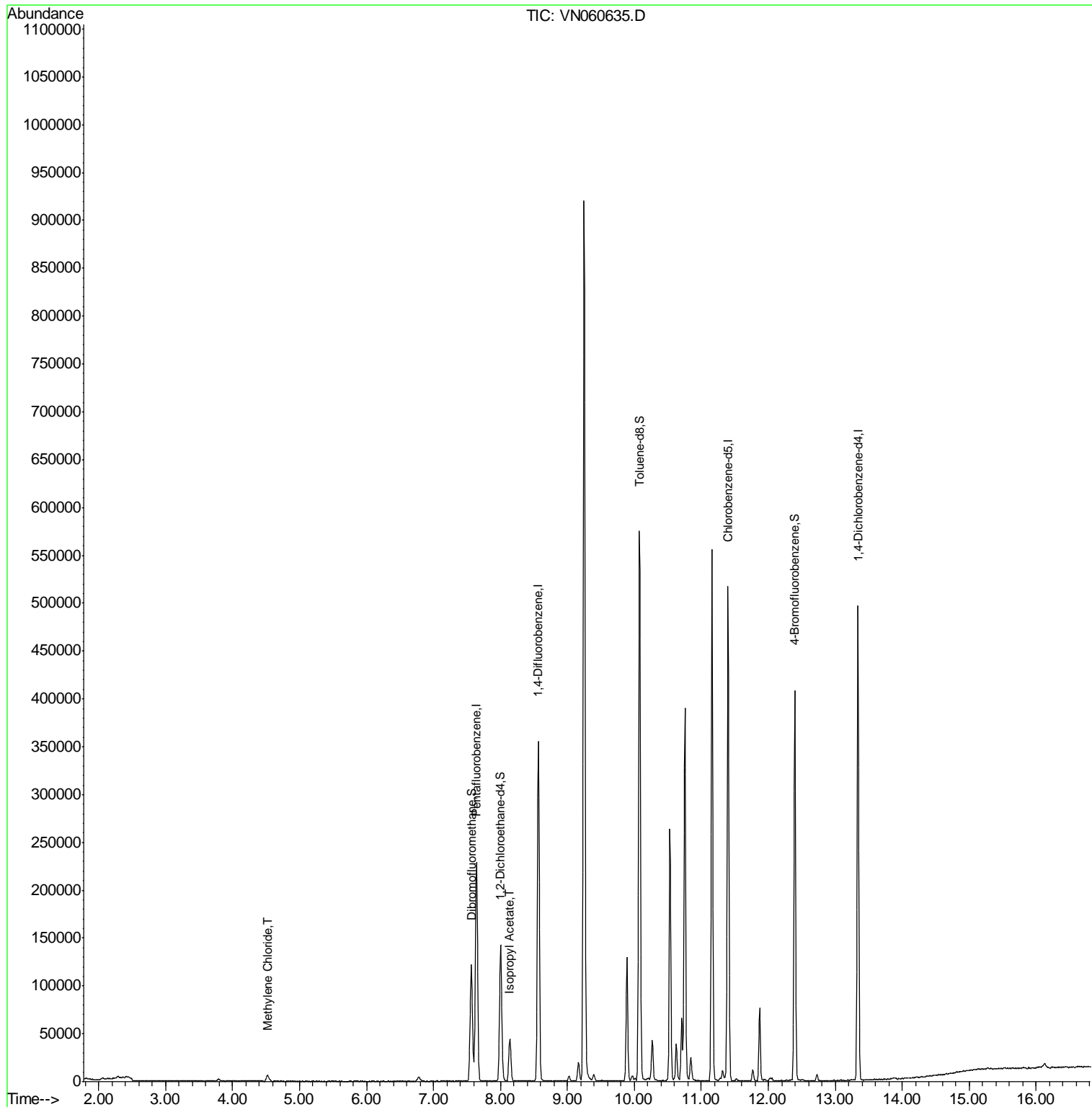
| Internal Standards | R.T. | QIon | Response | Conc | Units | Dev(Min) |
|-----------------------------|--------|------|----------|--------|---------|----------|
| 1) Pentafluorobenzene | 7.64 | 168 | 188424 | 50.00 | ug/l | 0.00 |
| 34) 1,4-Difluorobenzene | 8.57 | 114 | 315872 | 50.00 | ug/l | 0.00 |
| 63) Chlorobenzene-d5 | 11.40 | 117 | 293793 | 50.00 | ug/l | 0.00 |
| 72) 1,4-Dichlorobenzene-d4 | 13.34 | 152 | 130958 | 50.00 | ug/l | 0.00 |
| System Monitoring Compounds | | | | | | |
| 33) 1,2-Dichloroethane-d4 | 8.00 | 65 | 124468 | 48.12 | ug/l | 0.00 |
| Spiked Amount | 50.000 | | Recovery | = | 96.24% | |
| 35) Dibromofluoromethane | 7.57 | 113 | 93318 | 48.86 | ug/l | 0.00 |
| Spiked Amount | 50.000 | | Recovery | = | 97.72% | |
| 50) Toluene-d8 | 10.08 | 98 | 388516 | 49.80 | ug/l | 0.00 |
| Spiked Amount | 50.000 | | Recovery | = | 99.60% | |
| 62) 4-Bromofluorobenzene | 12.40 | 95 | 144036 | 50.38 | ug/l | 0.00 |
| Spiked Amount | 50.000 | | Recovery | = | 100.76% | |
| Target Compounds | | | | | | |
| 20) Methylene Chloride | 4.52 | 84 | 4774 | 2.118 | ug/l | 88 |
| 43) Isopropyl Acetate | 8.14 | 43 | 54701 | 10.036 | ug/l # | 90 |

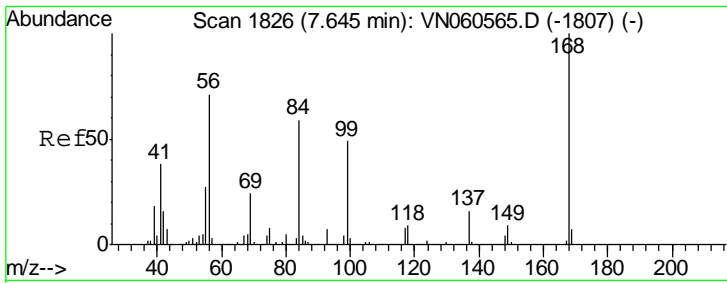
(#) = qualifier out of range (m) = manual integration (+) = signals summed

Data Path : Z:\VOASRV\HPCHEM1\MSVOA N\DATA\VN031920\
 Data File : VN060635.D
 Acq On : 19 Mar 2020 14:37
 Operator : JC/MD
 Sample : PB127661ZHE#07
 Misc : 5.00mL/MSVOA N/WATER
 ALS Vial : 14 Sample Multiplier: 1

Instrument :
 MSVOA_N
 ClientSampleId :
 PB127661ZHE#07

Quant Time: Mar 20 07:30:20 2020
 Quant Method : Z:\VOASRV\HPCHEM1\MSVOA_N\METHODS\82N031820W.M
 Quant Title : SW846 8260
 QLast Update : Wed Mar 18 08:49:09 2020
 Response via : Initial Calibration

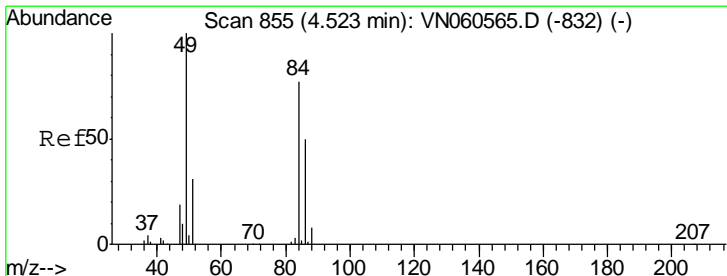
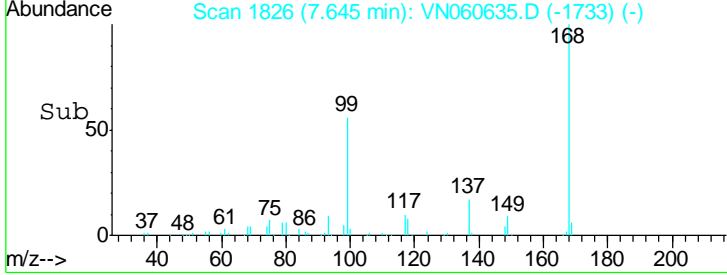
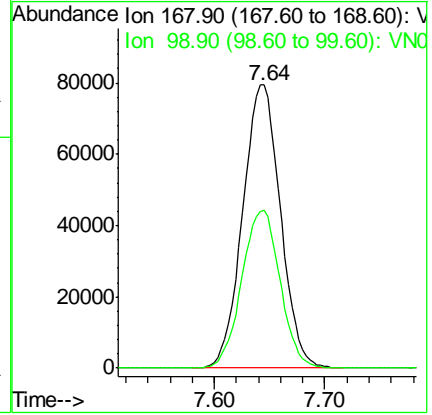
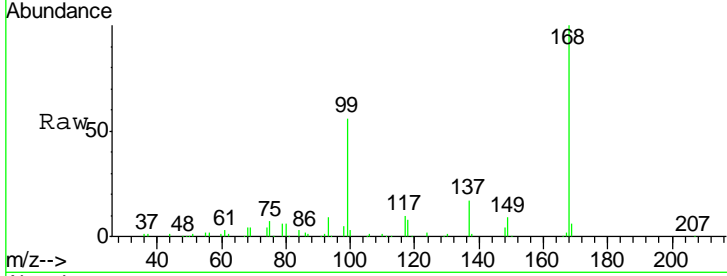




#1
 Pentafluorobenzene
 Concen: 50.000 ug/l
 RT: 7.64 min Scan# 1826
 Delta R.T. 0.00 min
 Lab File: VN060635.D
 Acq: 19 Mar 2020 14:37

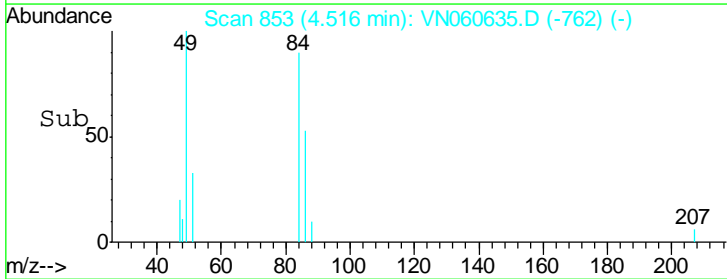
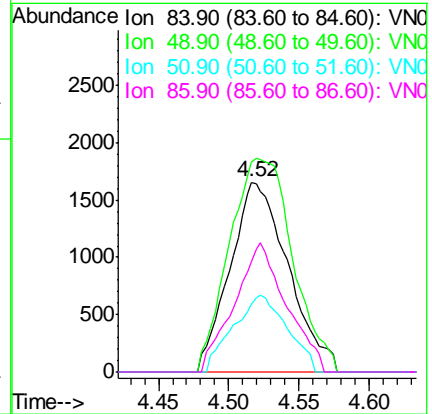
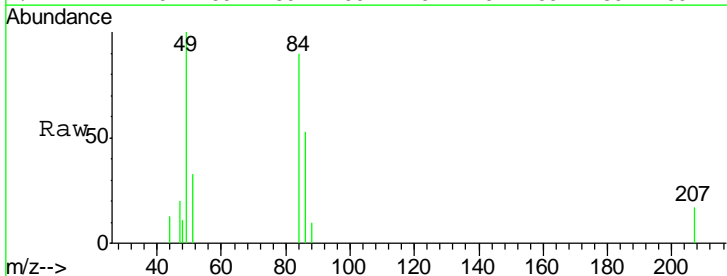
Instrument : MSVOA_N
 ClientSampleId : PB127661ZHE#07

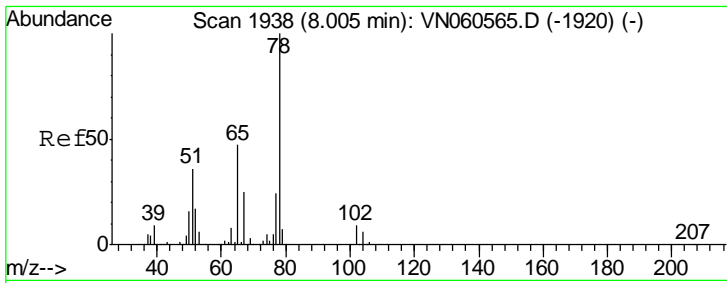
| Tgt Ion | Resp | Lower | Upper |
|---------|------|-------|-------|
| 168 | 100 | | |
| 99 | 55.7 | 44.0 | 66.0 |



#20
 Methylene Chloride
 Concen: 2.118 ug/l
 RT: 4.52 min Scan# 853
 Delta R.T. -0.01 min
 Lab File: VN060635.D
 Acq: 19 Mar 2020 14:37

| Tgt Ion | Resp | Lower | Upper |
|---------|-------|-------|-------|
| 84 | 100 | | |
| 49 | 110.6 | 103.3 | 154.9 |
| 51 | 36.1 | 31.6 | 47.4 |
| 86 | 58.1 | 52.0 | 78.0 |

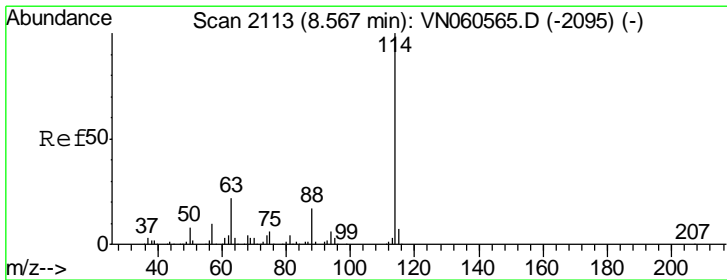
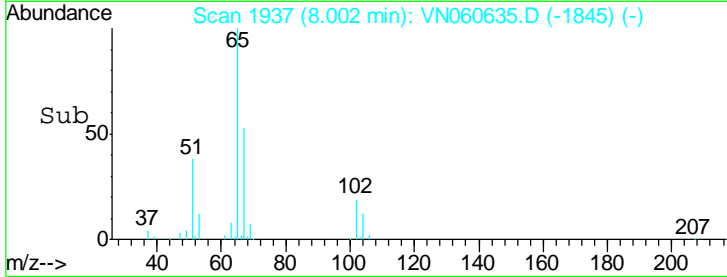
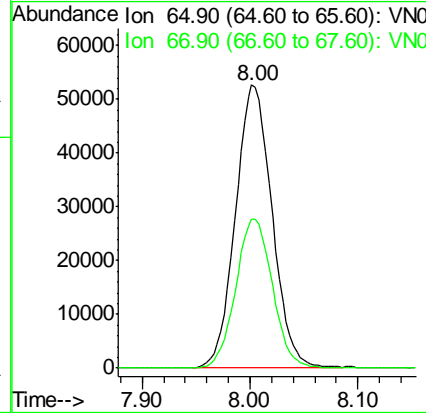
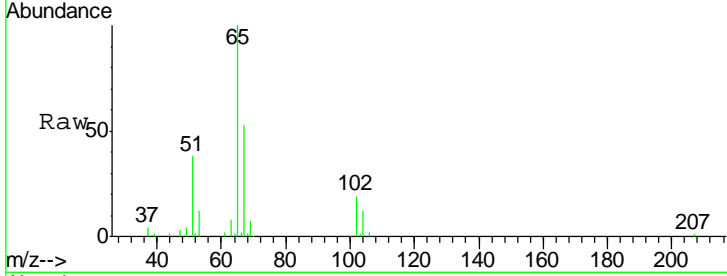




#33
 1,2-Dichloroethane-d4
 Concen: 48.120 ug/l
 RT: 8.00 min Scan# 1937
 Delta R.T. -0.00 min
 Lab File: VN060635.D
 Acq: 19 Mar 2020 14:37

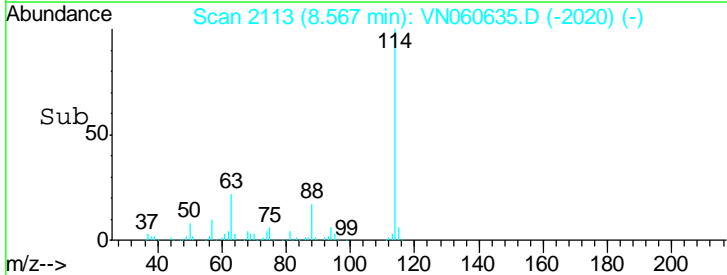
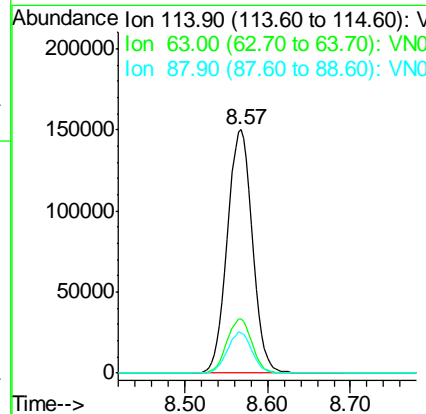
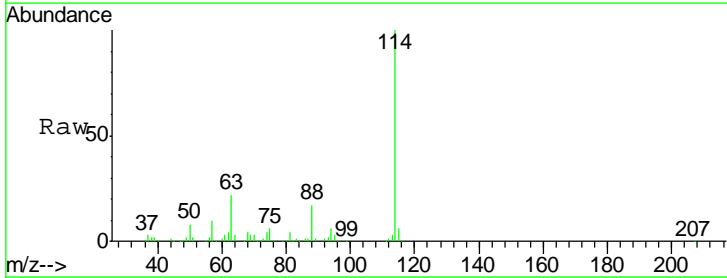
Instrument :
 MSVOA_N
 ClientSampleId :
 PB127661ZHE#07

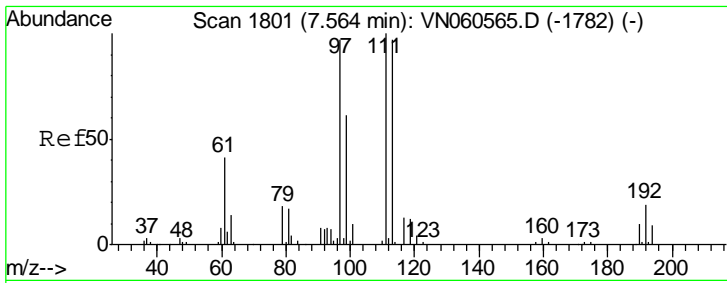
| Tgt Ion | Resp | Lower | Upper |
|---------|--------|-------|-------|
| 65 | 124468 | | |
| 67 | 52.9 | 0.0 | 107.6 |



#34
 1,4-Difluorobenzene
 Concen: 50.000 ug/l
 RT: 8.57 min Scan# 2113
 Delta R.T. 0.00 min
 Lab File: VN060635.D
 Acq: 19 Mar 2020 14:37

| Tgt Ion | Resp | Lower | Upper |
|---------|--------|-------|-------|
| 114 | 315872 | | |
| 63 | 22.2 | 0.0 | 43.8 |
| 88 | 16.7 | 0.0 | 33.0 |

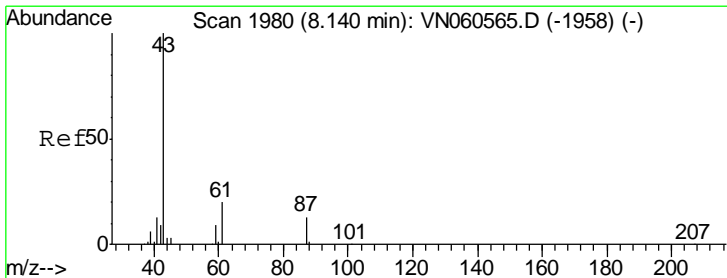
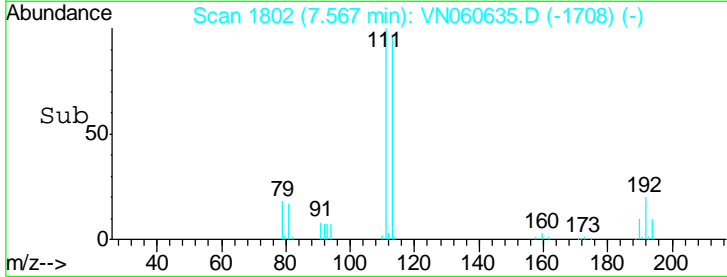
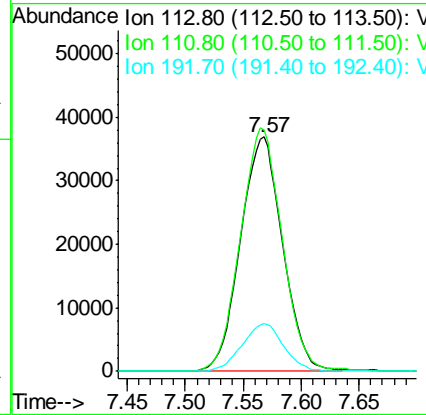
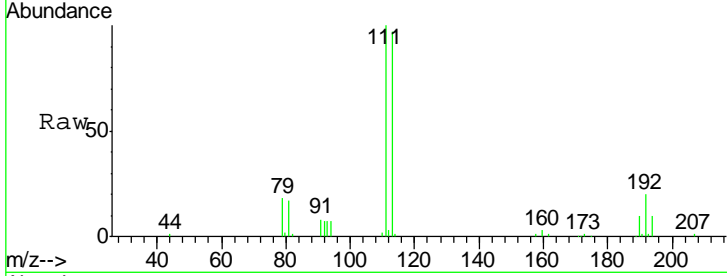




#35
 Dibromofluoromethane
 Concen: 48.858 ug/l
 RT: 7.57 min Scan# 1802
 Delta R.T. 0.00 min
 Lab File: VN060635.D
 Acq: 19 Mar 2020 14:37

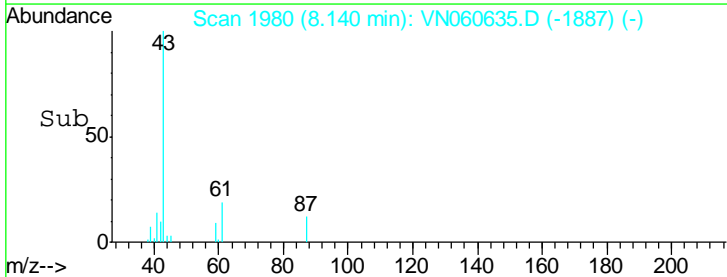
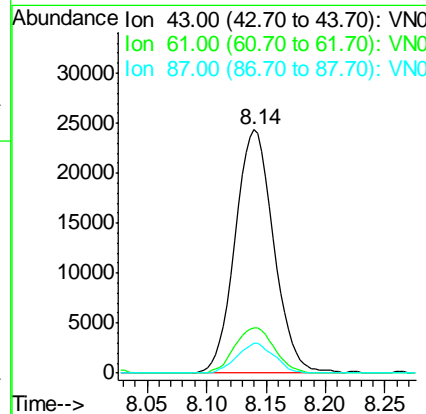
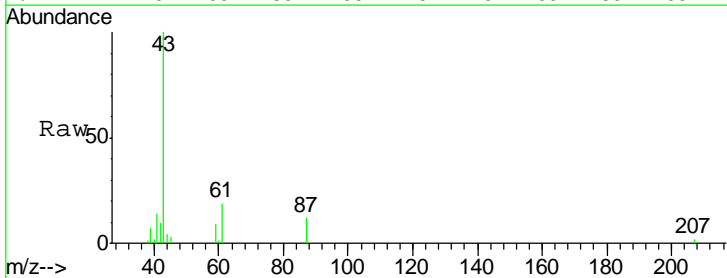
Instrument :
 MSVOA_N
 ClientSampled :
 PB127661ZHE#07

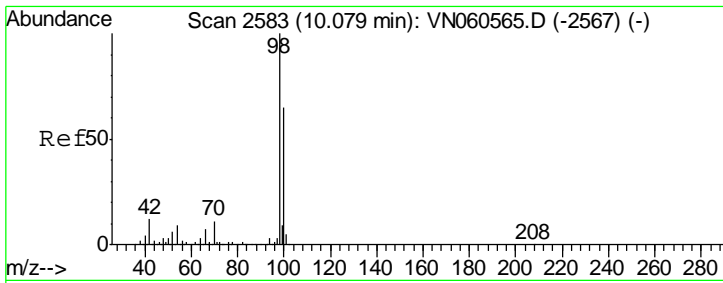
| Tgt Ion | Resp | Lower | Upper |
|---------|-------|-------|-------|
| 113 | 100 | | |
| 111 | 103.2 | 82.9 | 124.3 |
| 192 | 20.1 | 15.8 | 23.8 |



#43
 Isopropyl Acetate
 Concen: 10.036 ug/l
 RT: 8.14 min Scan# 1980
 Delta R.T. 0.00 min
 Lab File: VN060635.D
 Acq: 19 Mar 2020 14:37

| Tgt Ion | Resp | Lower | Upper |
|---------|------|-------|-------|
| 43 | 100 | | |
| 61 | 19.1 | 20.7 | 31.1# |
| 87 | 11.7 | 9.8 | 14.8 |

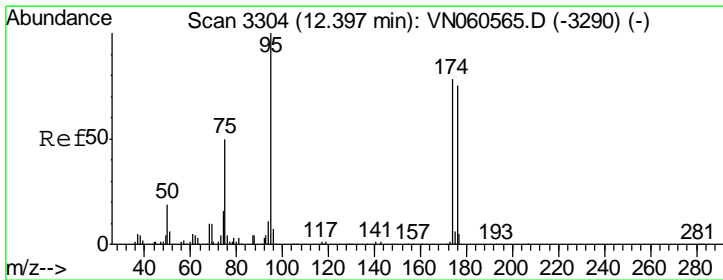
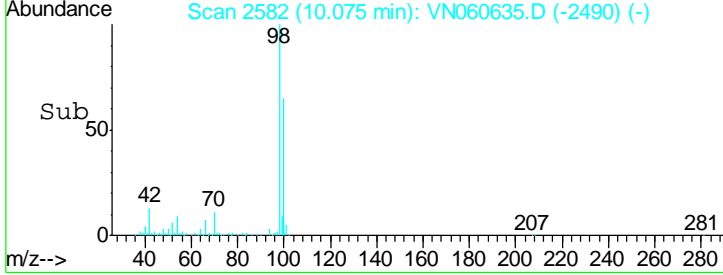
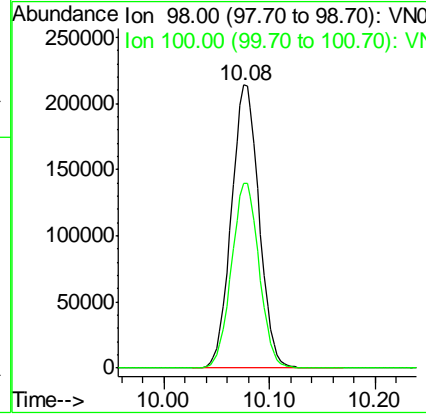
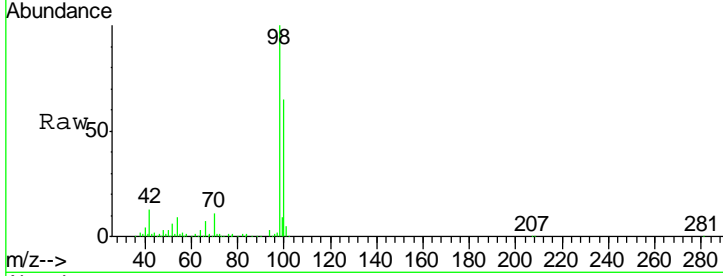




#50
 Toluene-d8
 Concen: 49.800 ug/l
 RT: 10.08 min Scan# 2582
 Delta R.T. -0.00 min
 Lab File: VN060635.D
 Acq: 19 Mar 2020 14:37

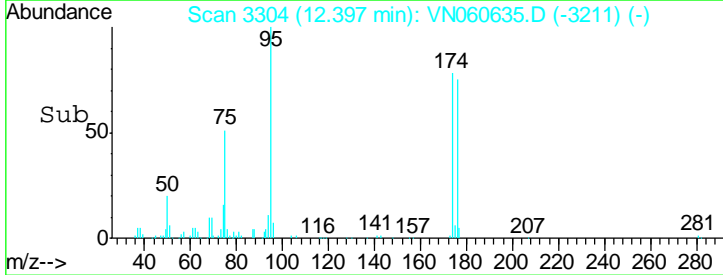
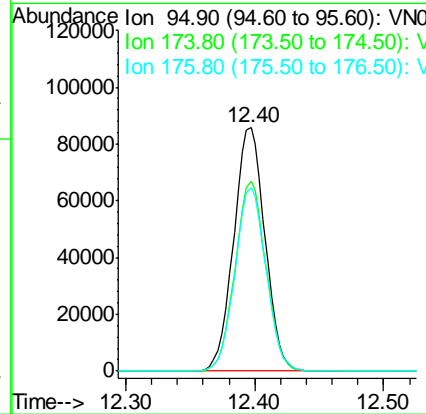
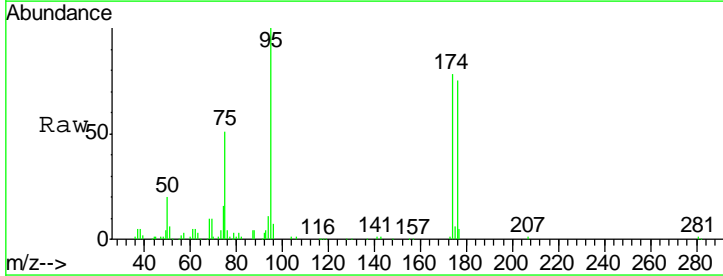
Instrument : MSVOA_N
 ClientSampled : PB127661ZHE#07

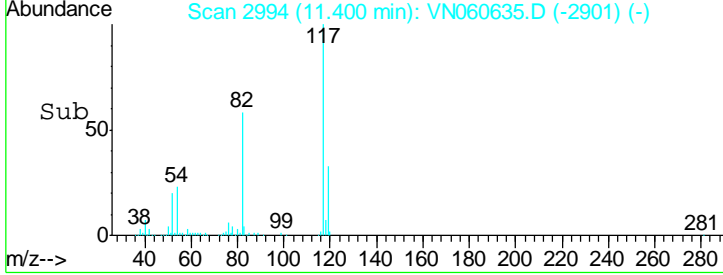
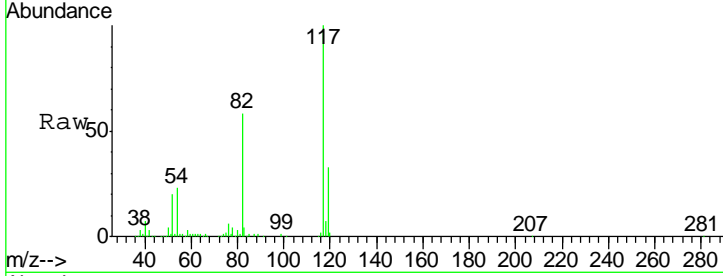
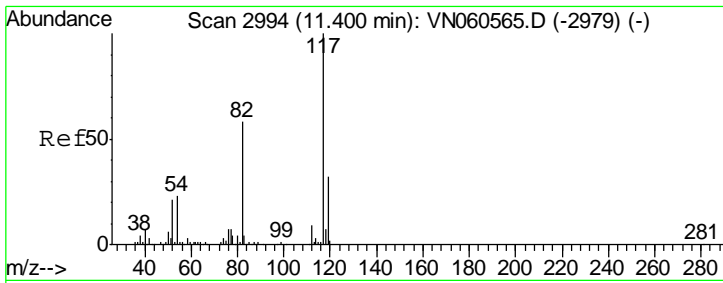
| Tgt Ion | Resp | Lower | Upper |
|---------|--------|-------|-------|
| 98 | 388516 | | |
| 100 | 100 | 65.2 | 77.8 |
| 100 | 65.2 | 51.8 | 77.8 |



#62
 4-Bromofluorobenzene
 Concen: 50.377 ug/l
 RT: 12.40 min Scan# 3304
 Delta R.T. 0.00 min
 Lab File: VN060635.D
 Acq: 19 Mar 2020 14:37

| Tgt Ion | Resp | Lower | Upper |
|---------|--------|-------|-------|
| 95 | 144036 | | |
| 95 | 100 | | |
| 174 | 77.2 | 0.0 | 157.6 |
| 176 | 74.9 | 0.0 | 150.6 |

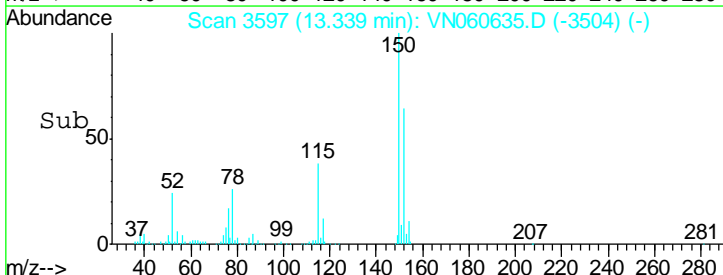
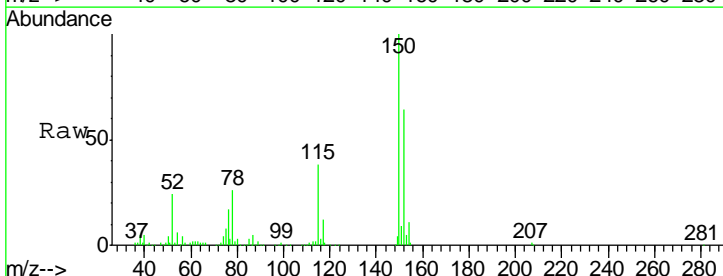
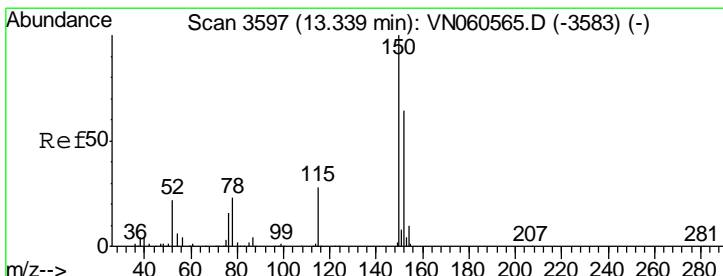
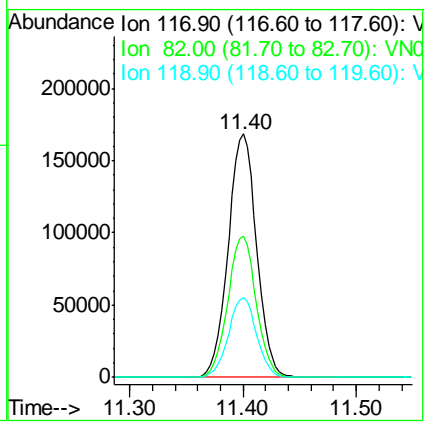




#63
 Chlorobenzene-d5
 Concen: 50.000 ug/l
 RT: 11.40 min Scan# 2994
 Delta R.T. 0.00 min
 Lab File: VN060635.D
 Acq: 19 Mar 2020 14:37

Instrument : MSVOA_N
 ClientSampled : PB127661ZHE#07

| Tgt Ion | Resp | Lower | Upper |
|---------|--------|-------|-------|
| 117 | 293793 | | |
| 82 | 57.8 | 46.7 | 70.1 |
| 119 | 32.6 | 25.5 | 38.3 |



#72
 1,4-Dichlorobenzene-d4
 Concen: 50.000 ug/l
 RT: 13.34 min Scan# 3597
 Delta R.T. 0.00 min
 Lab File: VN060635.D
 Acq: 19 Mar 2020 14:37

| Tgt Ion | Resp | Lower | Upper |
|---------|--------|-------|-------|
| 152 | 130958 | | |
| 115 | 59.4 | 30.2 | 90.6 |
| 150 | 157.0 | 0.0 | 350.2 |

