

Data Path : Z:\voasrv\HPCHEM1\MSVOA_N\Data\VN032122\
 Data File : VN071431.D
 Acq On : 21 Mar 2022 20:29
 Operator : JC\MD
 Sample : N1966-08
 Misc : 5.0mL/MSVOA_N/WATER
 ALS Vial : 18 Sample Multiplier: 1

Instrument :
 MSVOA_N
 ClientSampleId :
 G-1-8-15-16

Quant Time: Mar 22 06:23:04 2022
 Quant Method : Z:\voasrv\HPCHEM1\MSVOA_N\methods\82N030722W.M
 Quant Title : SW846 8260
 QLast Update : Tue Mar 08 06:52:46 2022
 Response via : Initial Calibration

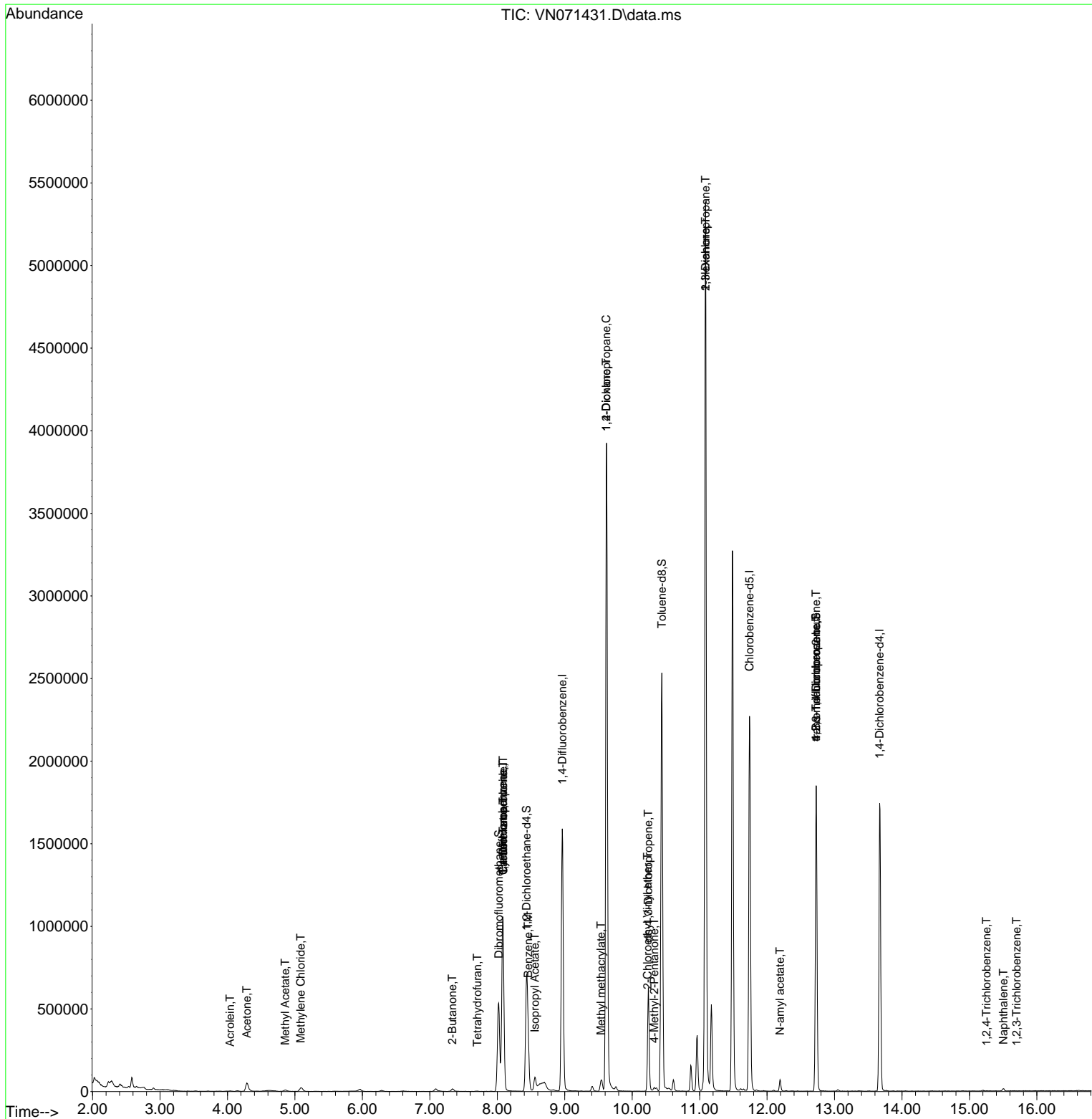
Compound	R.T.	QIon	Response	Conc	Units	Dev(Min)
Internal Standards						
1) Pentafluorobenzene	8.080	168	819947	50.000	ug/l	0.00
34) 1,4-Difluorobenzene	8.963	114	1390968	50.000	ug/l	0.00
63) Chlorobenzene-d5	11.739	117	1320395	50.000	ug/l	0.00
72) 1,4-Dichlorobenzene-d4	13.668	152	484770	50.000	ug/l	0.00
System Monitoring Compounds						
33) 1,2-Dichloroethane-d4	8.433	65	522632	46.507	ug/l	0.00
Spiked Amount	50.000	Range 61 - 141	Recovery	=	93.020%	
35) Dibromofluoromethane	8.022	113	394625	44.959	ug/l	0.00
Spiked Amount	50.000	Range 69 - 133	Recovery	=	89.920%	
50) Toluene-d8	10.439	98	1732392	49.020	ug/l	0.00
Spiked Amount	50.000	Range 65 - 126	Recovery	=	98.040%	
62) 4-Bromofluorobenzene	12.727	95	638093	53.320	ug/l	0.00
Spiked Amount	50.000	Range 58 - 135	Recovery	=	106.640%	
Target Compounds						
5) Bromomethane	2.846	94	750	Below Cal	#	47
13) Acrolein	4.040	56	3432	1.469	ug/l	94
16) Acetone	4.287	43	95141	17.400	ug/l	91
18) Methyl Acetate	4.857	43	18727	1.733	ug/l	93
20) Methylene Chloride	5.087	84	18242	2.193	ug/l	92
25) 2-Butanone	7.333	43	27216	3.090	ug/l	91
29) Tetrahydrofuran	7.704	42	1896	0.311	ug/l	# 59
31) Cyclohexane	8.086	56	17350	0.967	ug/l	# 1
36) 1,1-Dichloropropene	8.086	75	64885	4.614	ug/l	# 49
38) Carbon Tetrachloride	8.086	117	79951	5.877	ug/l	# 16
40) Benzene	8.457	78	234607	5.537	ug/l	98
43) Isopropyl Acetate	8.557	43	102548	3.543	ug/l	# 83
45) 1,2-Dichloropropane	9.616	63	5444	0.479	ug/l	# 44
48) Methyl methacrylate	9.539	41	22103	1.648	ug/l	# 8
49) 1,4-Dioxane	9.616	88	614	2.634	ug/l	# 1
51) 4-Methyl-2-Pentanone	10.327	43	13771	0.767	ug/l	95
54) cis-1,3-Dichloropropene	10.239	75	107732	6.322	ug/l	# 60
57) 1,3-Dichloropropane	11.086	76	54576	2.908	ug/l	# 44
58) 2-Chloroethyl Vinyl ether	10.227	63	54	27.879	ug/l	# 45
59) 2-Hexanone	11.086	43	867189	70.757	ug/l	# 49
74) N-amyl acetate	12.192	43	23406	1.332	ug/l	# 52
75) 1,1,2,2-Tetrachloroethane	12.727	83	556	Below Cal	#	1
76) 1,2,3-Trichloropropane	12.727	75	331501	26.912	ug/l	# 1
81) trans-1,4-Dichloro-2-b...	12.727	75	331501	73.922	ug/l	# 5
93) 1,2,4-Trichlorobenzene	15.251	180	408	3.038	ug/l	# 61
95) Naphthalene	15.504	128	12916	5.590	ug/l	97
96) 1,2,3-Trichlorobenzene	15.698	180	161	2.752	ug/l	# 49

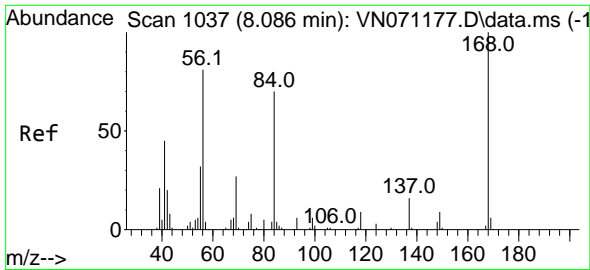
(#) = qualifier out of range (m) = manual integration (+) = signals summed

Data Path : Z:\voasrv\HPCHEM1\MSVOA_N\Data\VN032122\
 Data File : VN071431.D
 Acq On : 21 Mar 2022 20:29
 Operator : JC\MD
 Sample : N1966-08
 Misc : 5.0mL/MSVOA_N/WATER
 ALS Vial : 18 Sample Multiplier: 1

Instrument :
 MSVOA_N
 ClientSampleId :
 G-1-8-15-16

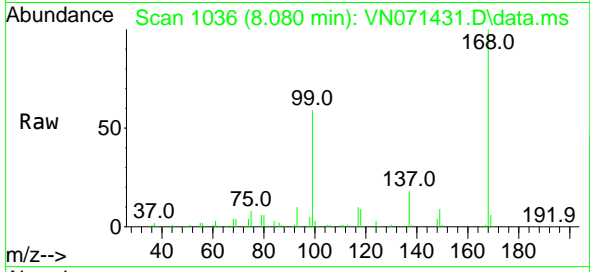
Quant Time: Mar 22 06:23:04 2022
 Quant Method : Z:\voasrv\HPCHEM1\MSVOA_N\methods\82N030722W.M
 Quant Title : SW846 8260
 QLast Update : Tue Mar 08 06:52:46 2022
 Response via : Initial Calibration



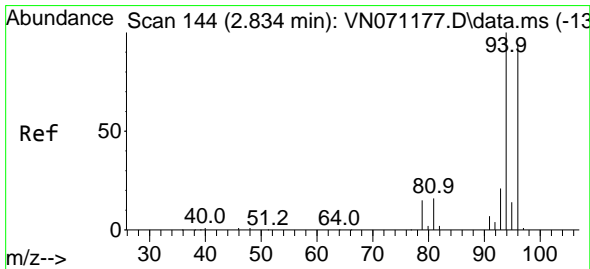
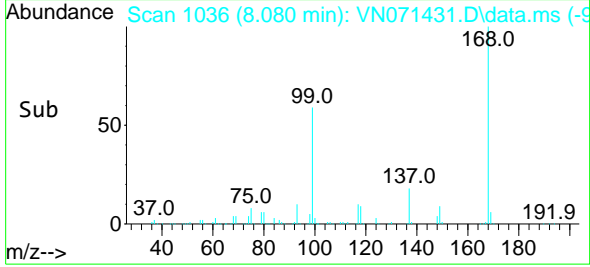
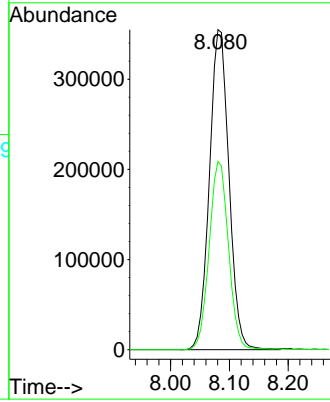


#1
 Pentafluorobenzene
 Concen: 50.000 ug/l
 RT: 8.080 min Scan# 1037
 Delta R.T. -0.006 min
 Lab File: VN071431.D
 Acq: 21 Mar 2022 20:29

Instrument :
 MSVOA_N
 ClientSampleId :
 G-1-8-15-16

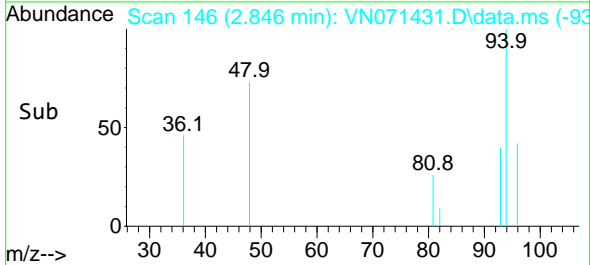
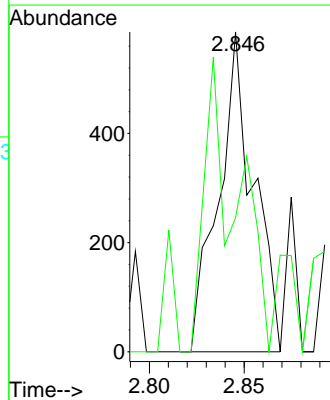
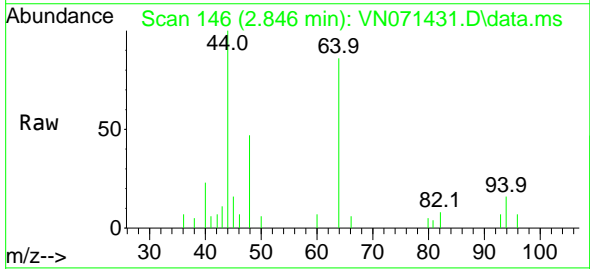


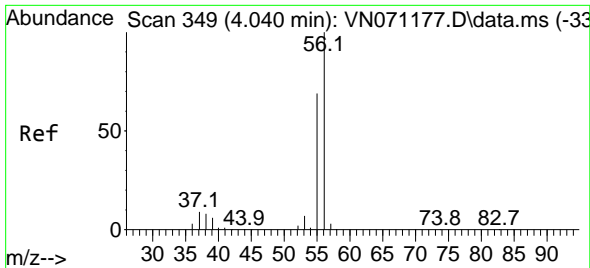
Tgt Ion:168 Resp: 819947
 Ion Ratio Lower Upper
 168 100
 99 58.8 41.3 61.9



#5
 Bromomethane
 Concen: Below Cal
 RT: 2.846 min Scan# 146
 Delta R.T. 0.012 min
 Lab File: VN071431.D
 Acq: 21 Mar 2022 20:29

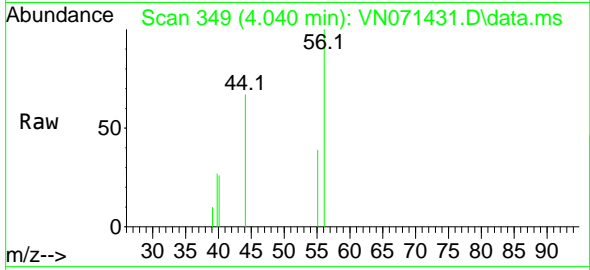
Tgt Ion: 94 Resp: 750
 Ion Ratio Lower Upper
 94 100
 96 42.0 73.8 110.8#



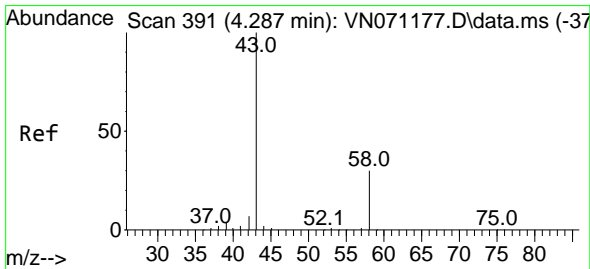
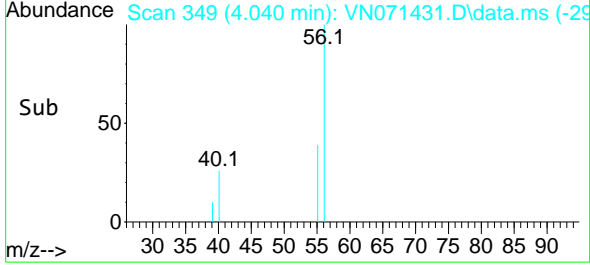
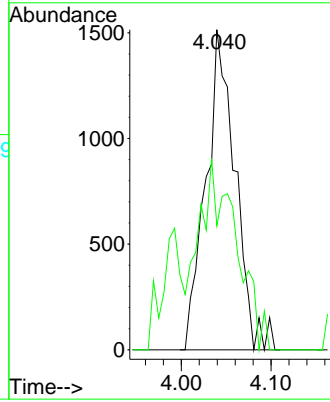


#13
 Acrolein
 Concen: 1.469 ug/l
 RT: 4.040 min Scan# 349
 Delta R.T. -0.000 min
 Lab File: VN071431.D
 Acq: 21 Mar 2022 20:29

Instrument : MSVOA_N
 ClientSampleId : G-1-8-15-16

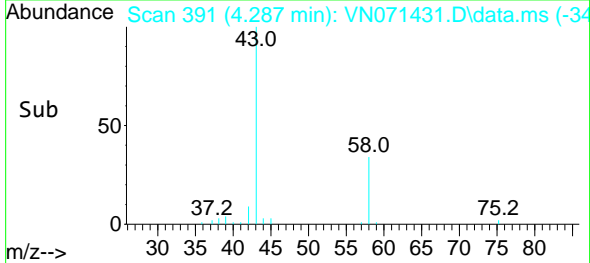
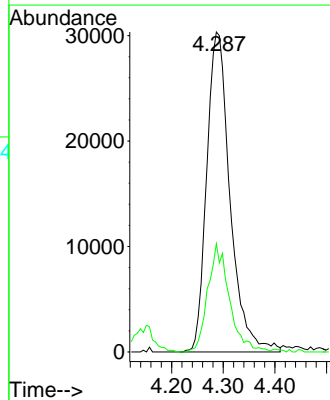
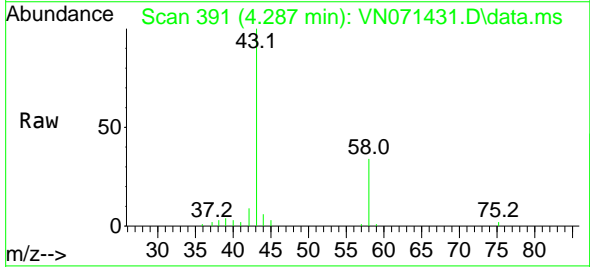


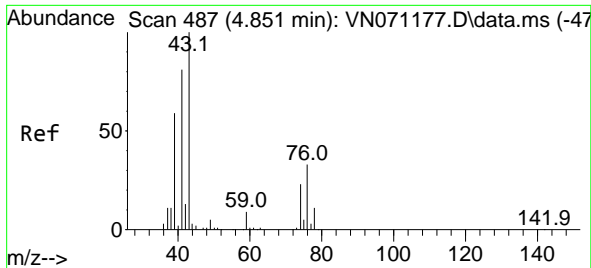
Tgt Ion: 56 Resp: 3432
 Ion Ratio Lower Upper
 56 100
 55 76.1 56.6 85.0



#16
 Acetone
 Concen: 17.400 ug/l
 RT: 4.287 min Scan# 391
 Delta R.T. -0.000 min
 Lab File: VN071431.D
 Acq: 21 Mar 2022 20:29

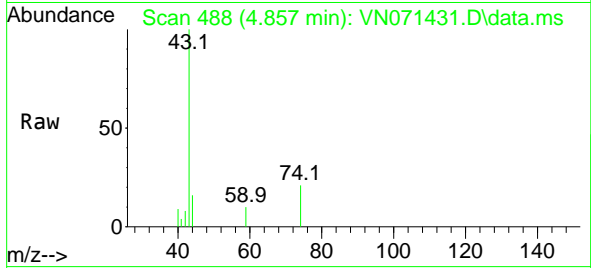
Tgt Ion: 43 Resp: 95141
 Ion Ratio Lower Upper
 43 100
 58 33.8 23.1 34.7



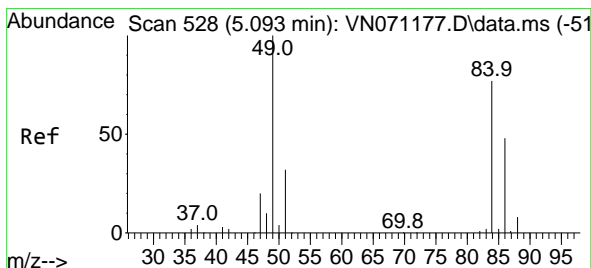
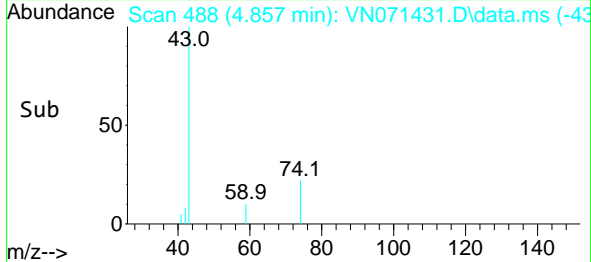
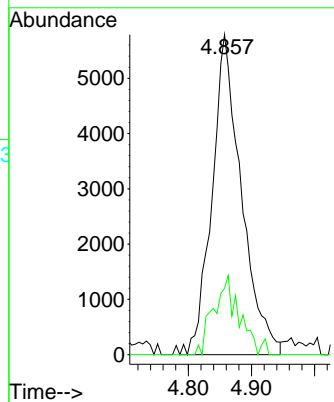


#18
 Methyl Acetate
 Concen: 1.733 ug/l
 RT: 4.857 min Scan# 488
 Delta R.T. 0.006 min
 Lab File: VN071431.D
 Acq: 21 Mar 2022 20:29

Instrument : MSVOA_N
 ClientSampleId : G-1-8-15-16

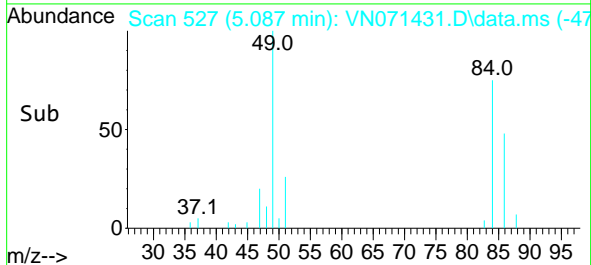
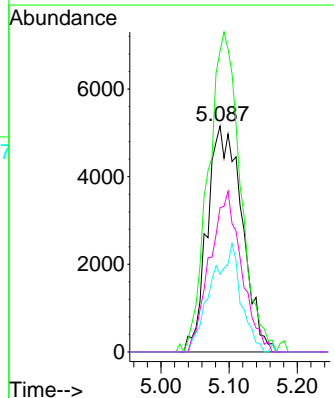
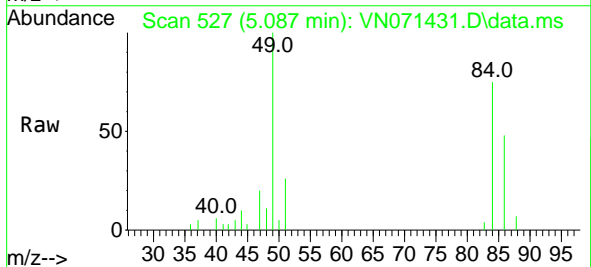


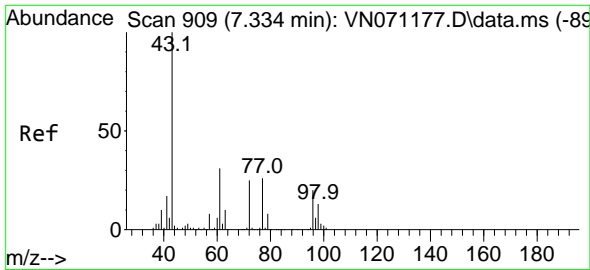
Tgt Ion: 43 Resp: 18727
 Ion Ratio Lower Upper
 43 100
 74 20.9 19.4 29.2



#20
 Methylene Chloride
 Concen: 2.193 ug/l
 RT: 5.087 min Scan# 527
 Delta R.T. -0.006 min
 Lab File: VN071431.D
 Acq: 21 Mar 2022 20:29

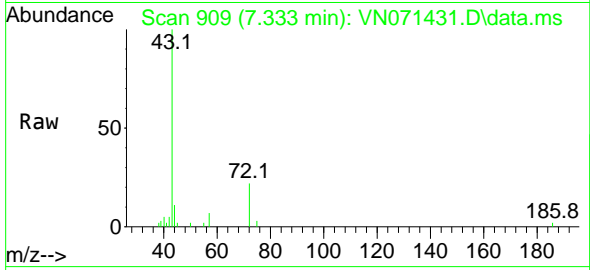
Tgt Ion: 84 Resp: 18242
 Ion Ratio Lower Upper
 84 100
 49 129.5 93.5 140.3
 51 34.4 29.4 44.2
 86 63.8 53.0 79.4



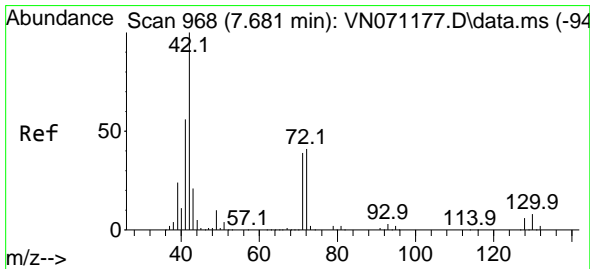
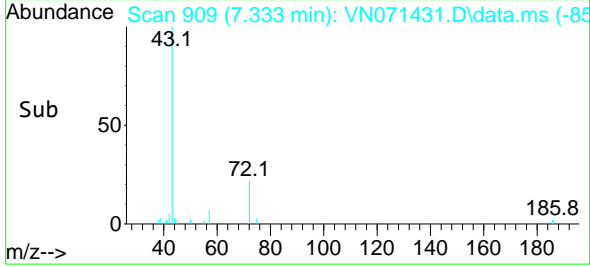
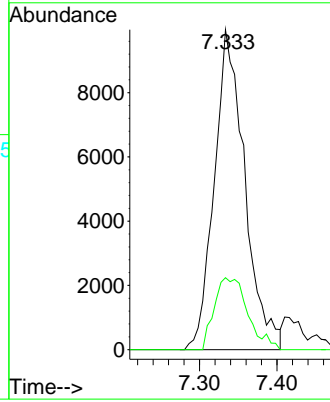


#25
 2-Butanone
 Concen: 3.090 ug/l
 RT: 7.333 min Scan# 909
 Delta R.T. -0.000 min
 Lab File: VN071431.D
 Acq: 21 Mar 2022 20:29

Instrument : MSVOA_N
 ClientSampleId : G-1-8-15-16

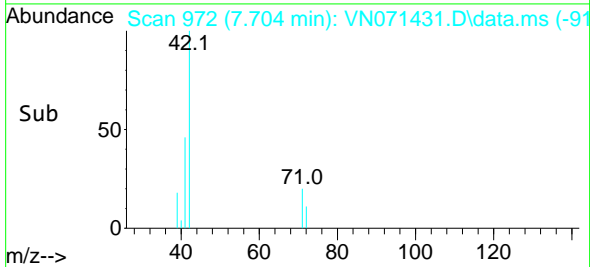
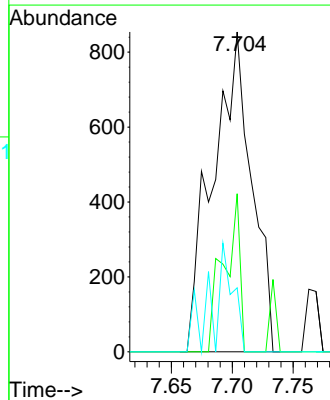
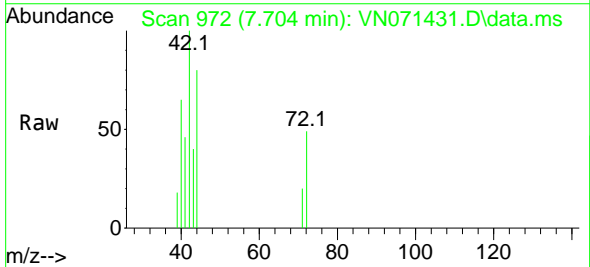


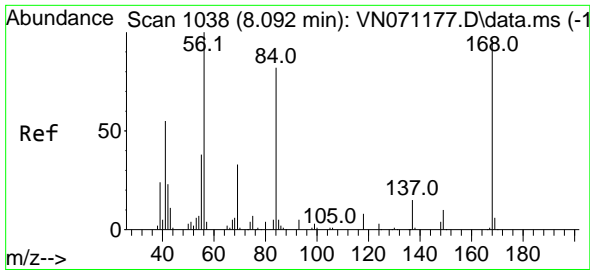
Tgt Ion: 43 Resp: 27216
 Ion Ratio Lower Upper
 43 100
 72 22.5 21.7 32.5



#29
 Tetrahydrofuran
 Concen: 0.311 ug/l
 RT: 7.704 min Scan# 972
 Delta R.T. 0.023 min
 Lab File: VN071431.D
 Acq: 21 Mar 2022 20:29

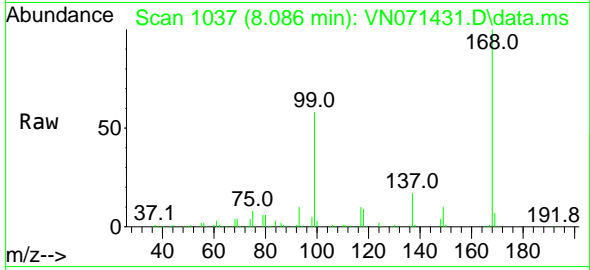
Tgt Ion: 42 Resp: 1896
 Ion Ratio Lower Upper
 42 100
 72 20.6 36.3 54.5#
 71 15.4 34.7 52.1#



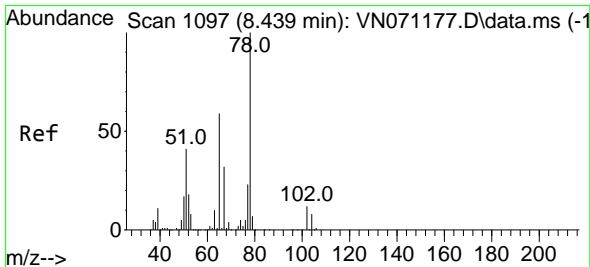
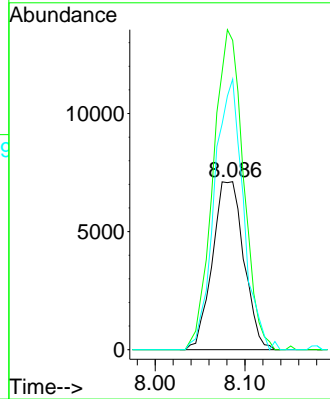
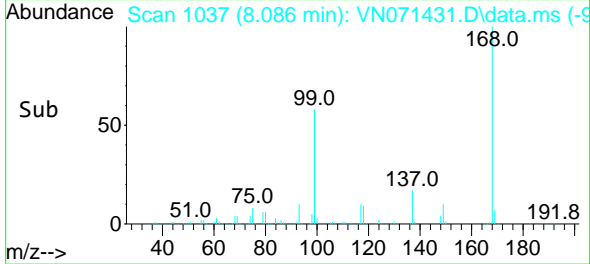


#31
 Cyclohexane
 Concen: 0.967 ug/l
 RT: 8.086 min Scan# 1037
 Delta R.T. -0.006 min
 Lab File: VN071431.D
 Acq: 21 Mar 2022 20:29

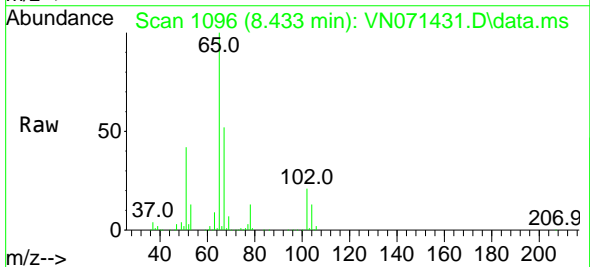
Instrument : MSVOA_N
 ClientSampleId : G-1-8-15-16



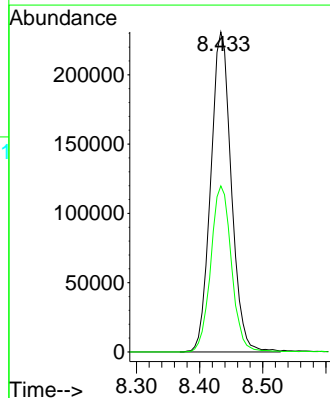
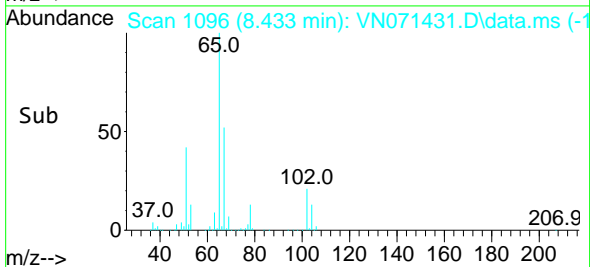
Tgt Ion: 56 Resp: 17350
 Ion Ratio Lower Upper
 56 100
 69 184.1 27.1 40.7#
 84 161.0 73.4 110.0#

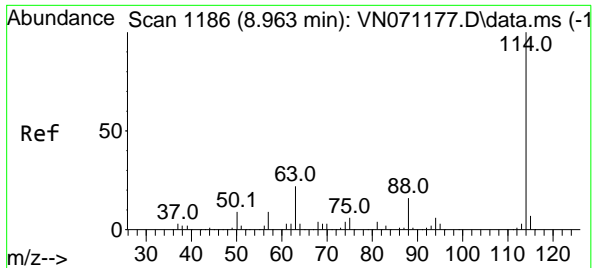


#33
 1,2-Dichloroethane-d4
 Concen: 46.507 ug/l
 RT: 8.433 min Scan# 1096
 Delta R.T. -0.006 min
 Lab File: VN071431.D
 Acq: 21 Mar 2022 20:29



Tgt Ion: 65 Resp: 522632
 Ion Ratio Lower Upper
 65 100
 67 52.3 0.0 103.0



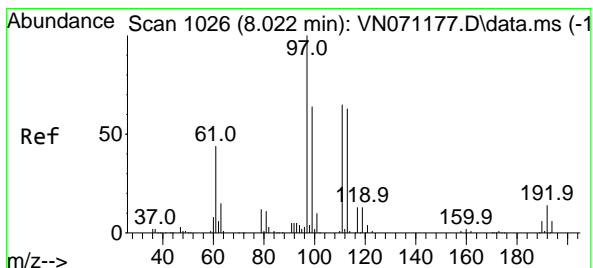
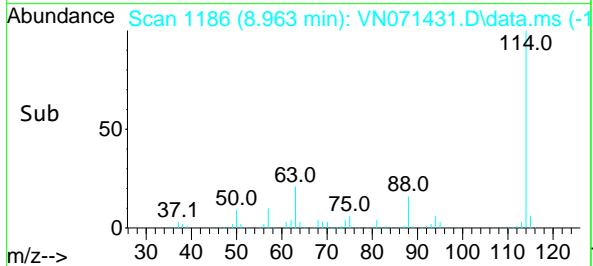
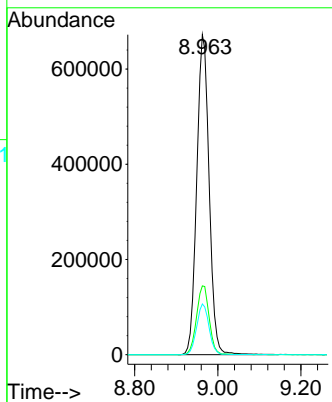
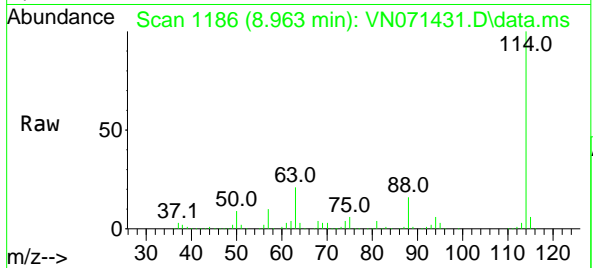


#34
 1,4-Difluorobenzene
 Concen: 50.000 ug/l
 RT: 8.963 min Scan# 1186
 Delta R.T. -0.000 min
 Lab File: VN071431.D
 Acq: 21 Mar 2022 20:29

Instrument : MSVOA_N
 ClientSampleId : G-1-8-15-16

Tgt Ion:114 Resp: 1390968

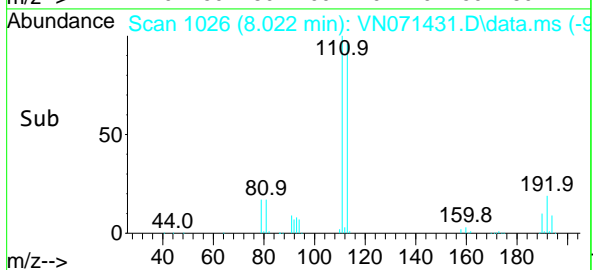
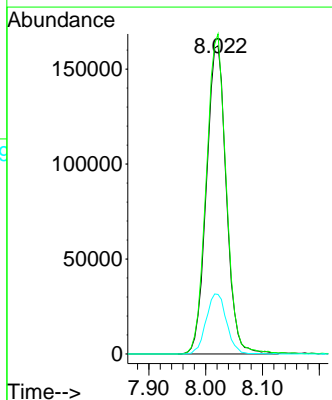
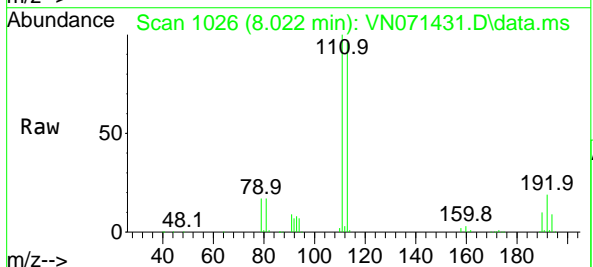
Ion	Ratio	Lower	Upper
114	100		
63	21.5	0.0	37.8
88	15.9	0.0	27.4

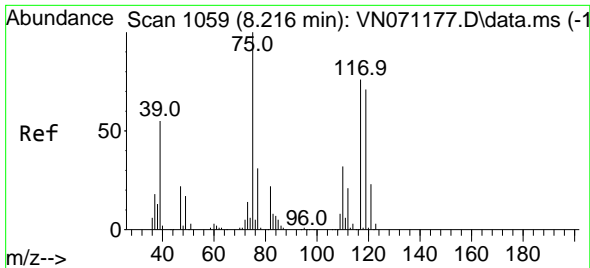


#35
 Dibromofluoromethane
 Concen: 44.959 ug/l
 RT: 8.022 min Scan# 1026
 Delta R.T. -0.000 min
 Lab File: VN071431.D
 Acq: 21 Mar 2022 20:29

Tgt Ion:113 Resp: 394625

Ion	Ratio	Lower	Upper
113	100		
111	103.6	82.2	123.2
192	20.0	16.9	25.3

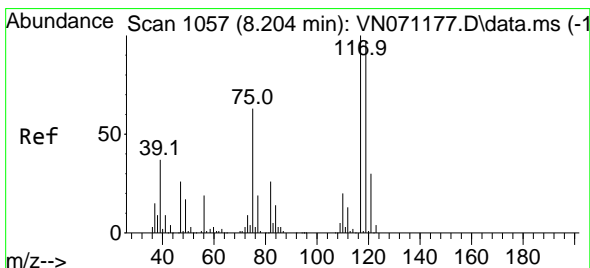
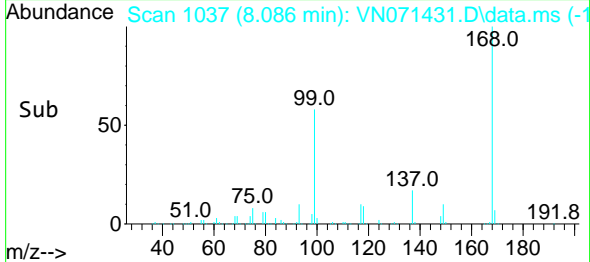
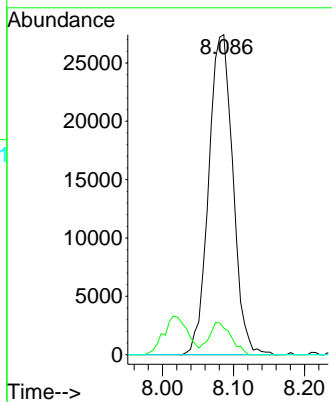
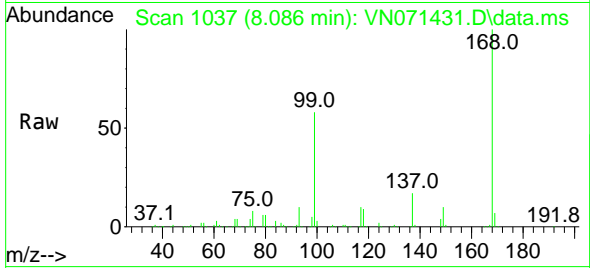




#36
 1,1-Dichloropropene
 Concen: 4.614 ug/l
 RT: 8.086 min Scan# 1037
 Delta R.T. -0.129 min
 Lab File: VN071431.D
 Acq: 21 Mar 2022 20:29

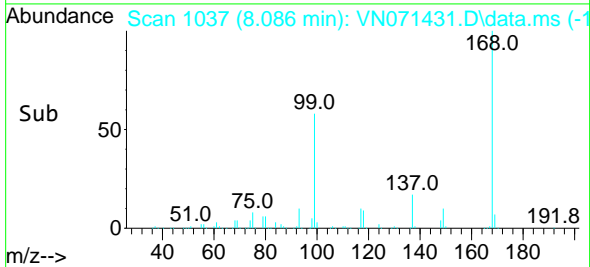
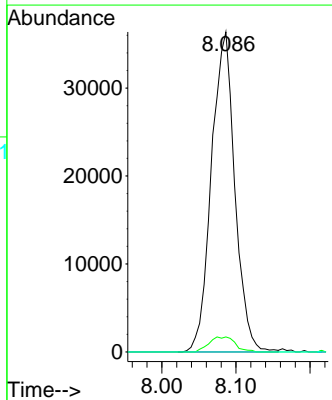
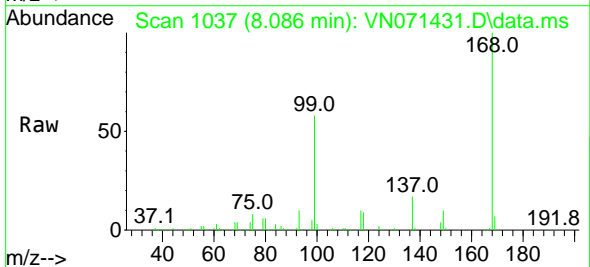
Instrument : MSVOA_N
 ClientSampleId : G-1-8-15-16

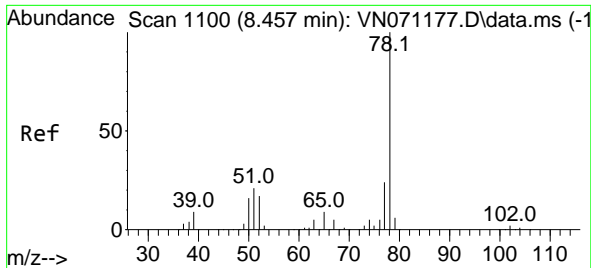
Tgt Ion: 75 Resp: 64885
 Ion Ratio Lower Upper
 75 100
 110 9.2 18.4 55.2#
 77 0.0 24.4 36.6#



#38
 Carbon Tetrachloride
 Concen: 5.877 ug/l
 RT: 8.086 min Scan# 1037
 Delta R.T. -0.118 min
 Lab File: VN071431.D
 Acq: 21 Mar 2022 20:29

Tgt Ion: 117 Resp: 79951
 Ion Ratio Lower Upper
 117 100
 119 4.7 76.1 114.1#
 121 0.0 24.2 36.2#

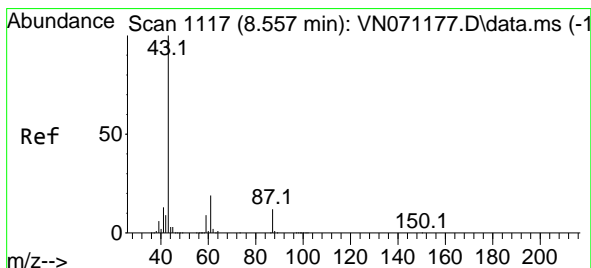
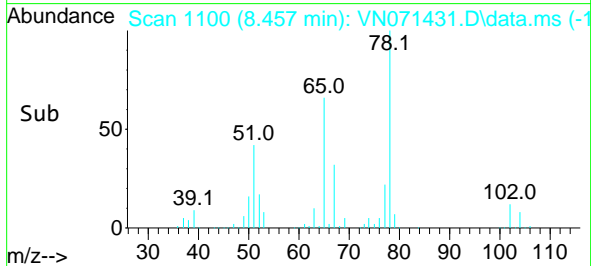
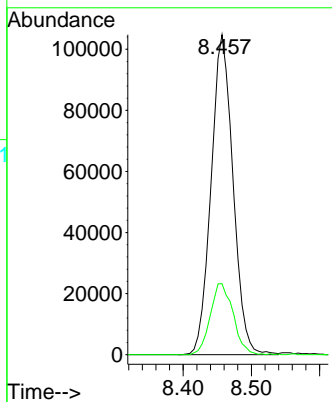
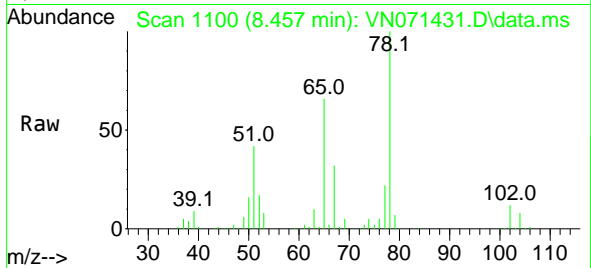




#40
Benzene
Concen: 5.537 ug/l
RT: 8.457 min Scan# 1100
Delta R.T. -0.000 min
Lab File: VN071431.D
Acq: 21 Mar 2022 20:29

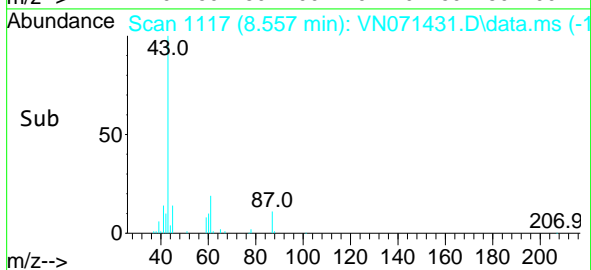
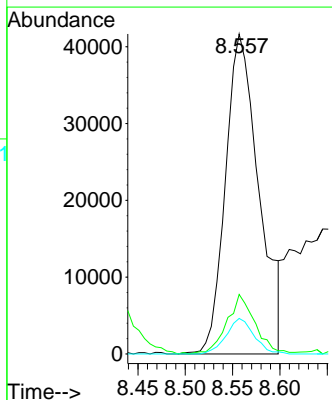
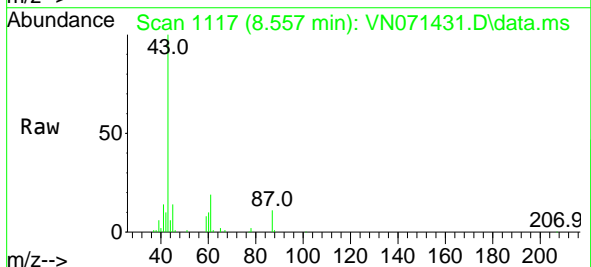
Instrument : MSVOA_N
ClientSampleId : G-1-8-15-16

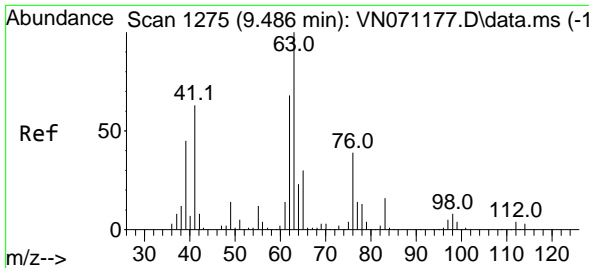
Tgt Ion: 78 Resp: 234607
Ion Ratio Lower Upper
78 100
77 22.2 18.6 27.8



#43
Isopropyl Acetate
Concen: 3.543 ug/l
RT: 8.557 min Scan# 1117
Delta R.T. -0.000 min
Lab File: VN071431.D
Acq: 21 Mar 2022 20:29

Tgt Ion: 43 Resp: 102548
Ion Ratio Lower Upper
43 100
61 15.7 20.4 30.6#
87 9.2 11.2 16.8#

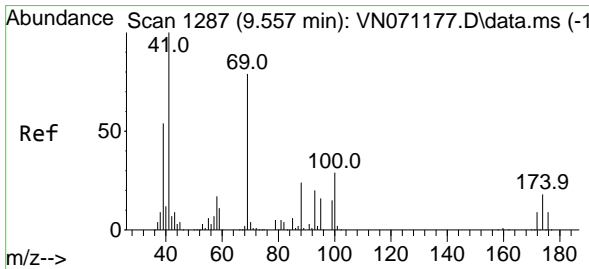
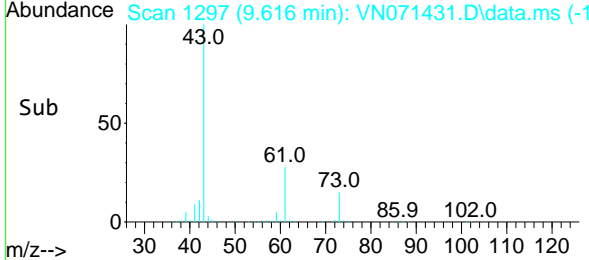
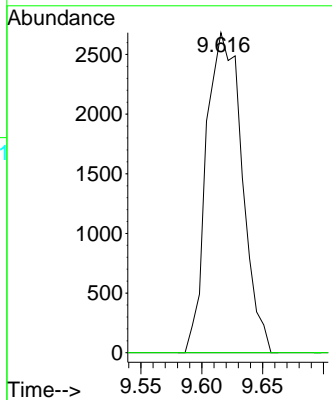
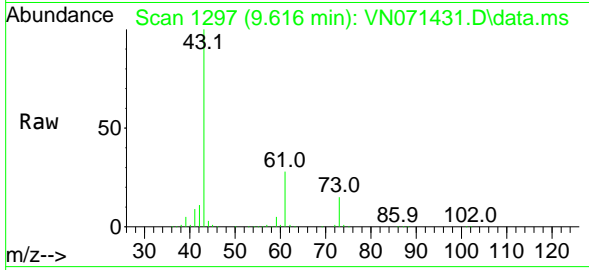




#45
 1,2-Dichloropropane
 Concen: 0.479 ug/l
 RT: 9.616 min Scan# 11
 Delta R.T. 0.130 min
 Lab File: VN071431.D
 Acq: 21 Mar 2022 20:29

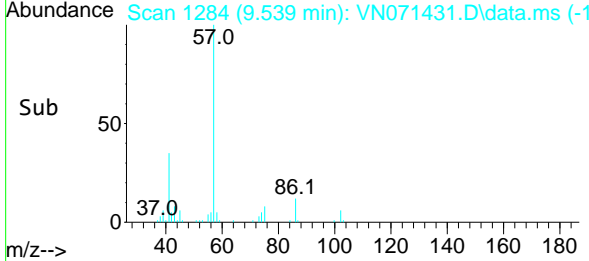
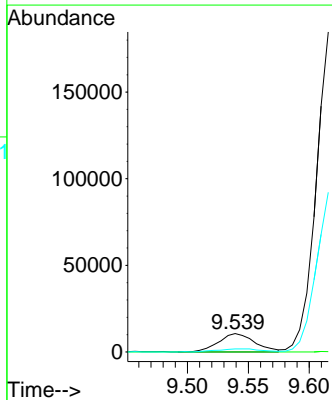
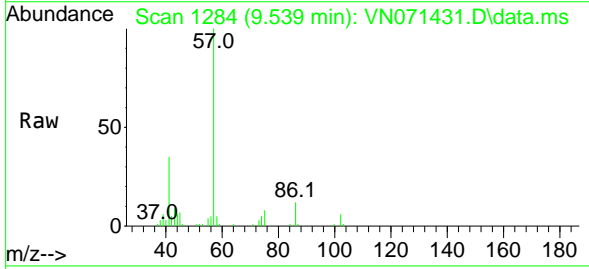
Instrument : MSVOA_N
 ClientSampleId : G-1-8-15-16

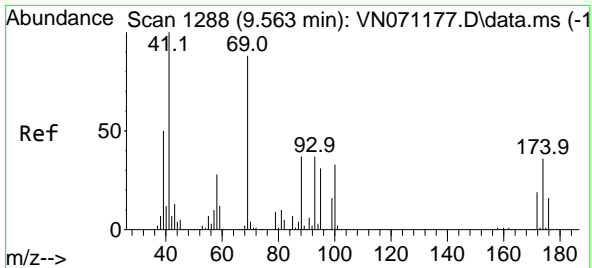
Tgt Ion: 63 Resp: 5444
 Ion Ratio Lower Upper
 63 100
 65 0.0 24.7 37.1#



#48
 Methyl methacrylate
 Concen: 1.648 ug/l
 RT: 9.539 min Scan# 1284
 Delta R.T. -0.018 min
 Lab File: VN071431.D
 Acq: 21 Mar 2022 20:29

Tgt Ion: 41 Resp: 22103
 Ion Ratio Lower Upper
 41 100
 69 0.0 72.4 108.6#
 39 0.0 58.4 87.6#

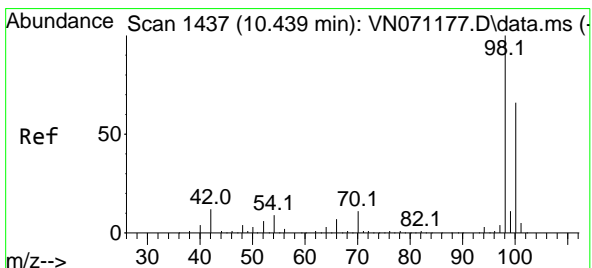
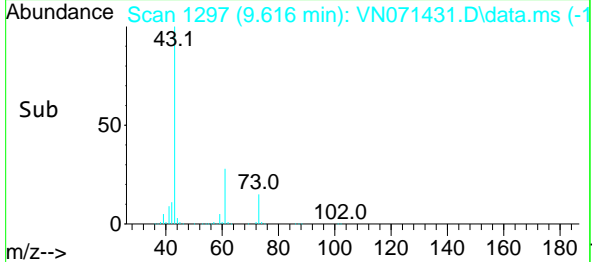
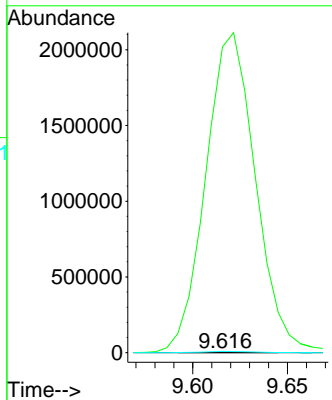
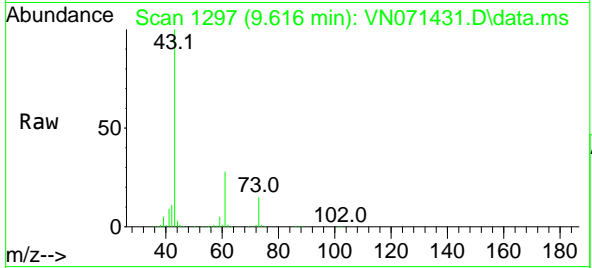




#49
 1,4-Dioxane
 Concen: 2.634 ug/l
 RT: 9.616 min Scan# 11
 Delta R.T. 0.053 min
 Lab File: VN071431.D
 Acq: 21 Mar 2022 20:29

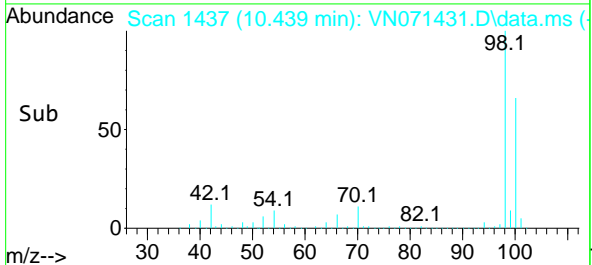
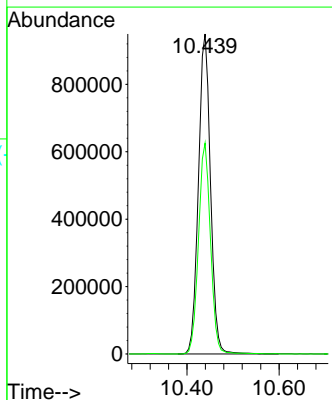
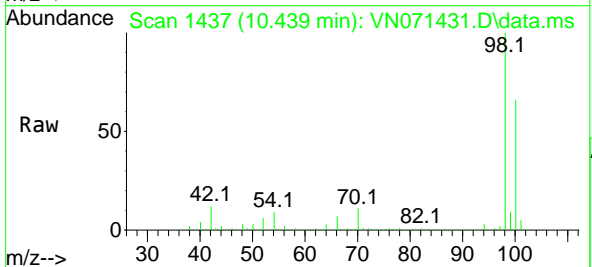
Instrument :
 MSVOA_N
 ClientSampleId :
 G-1-8-15-16

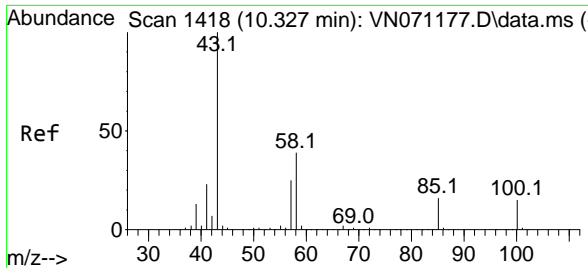
Tgt Ion: 88 Resp: 614
 Ion Ratio Lower Upper
 88 100
 43 639079.8 23.4 35.2#
 58 2543.0 50.6 75.8#



#50
 Toluene-d8
 Concen: 49.020 ug/l
 RT: 10.439 min Scan# 1437
 Delta R.T. 0.000 min
 Lab File: VN071431.D
 Acq: 21 Mar 2022 20:29

Tgt Ion: 98 Resp: 1732392
 Ion Ratio Lower Upper
 98 100
 100 65.3 50.4 75.6

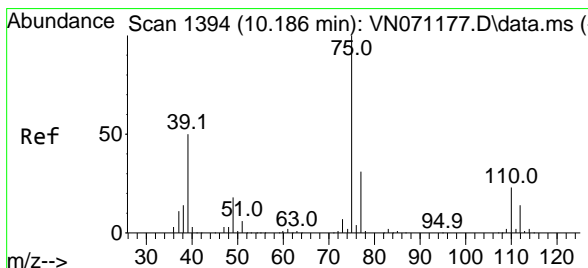
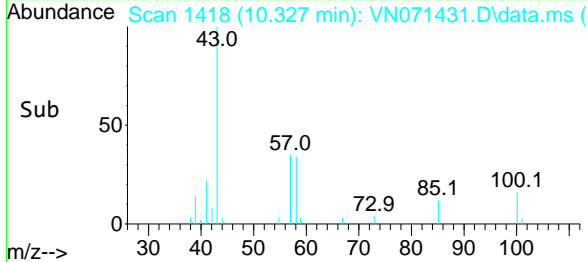
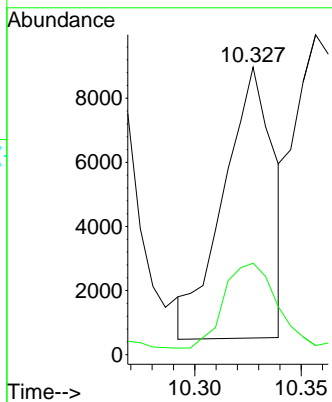
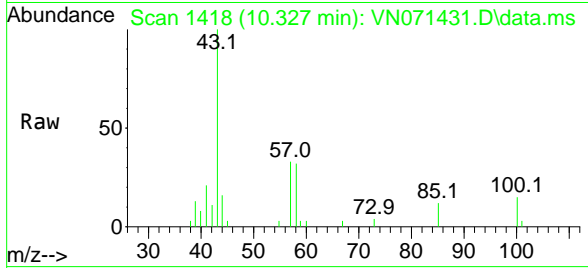




#51
 4-Methyl-2-Pentanone
 Concen: 0.767 ug/l
 RT: 10.327 min Scan# 1403
 Delta R.T. 0.000 min
 Lab File: VN071431.D
 Acq: 21 Mar 2022 20:29

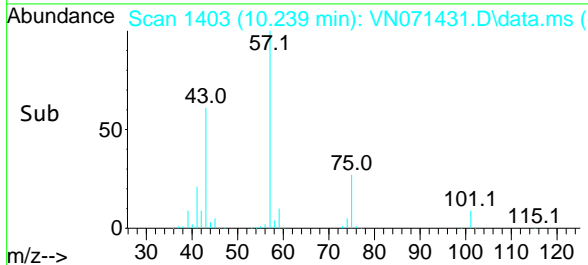
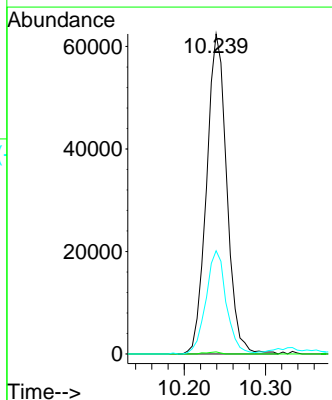
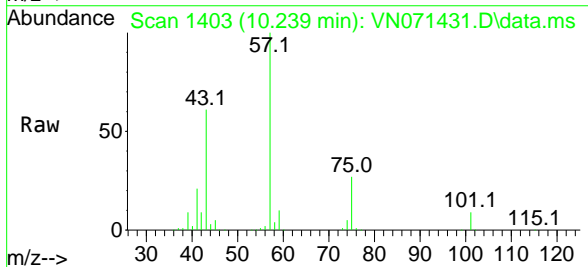
Instrument : MSVOA_N
 ClientSampleId : G-1-8-15-16

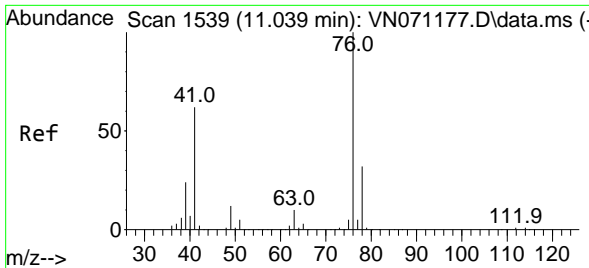
Tgt Ion: 43 Resp: 13771
 Ion Ratio Lower Upper
 43 100
 58 40.8 30.4 45.6



#54
 cis-1,3-Dichloropropene
 Concen: 6.322 ug/l
 RT: 10.239 min Scan# 1403
 Delta R.T. 0.053 min
 Lab File: VN071431.D
 Acq: 21 Mar 2022 20:29

Tgt Ion: 75 Resp: 107732
 Ion Ratio Lower Upper
 75 100
 77 0.7 26.4 39.6#
 39 32.3 42.5 63.7#

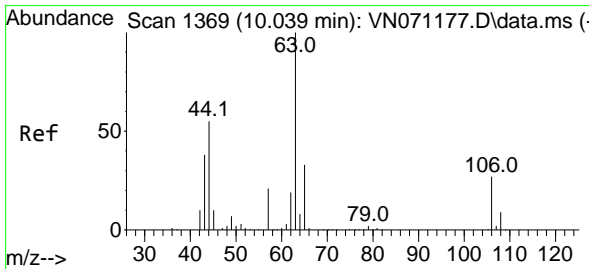
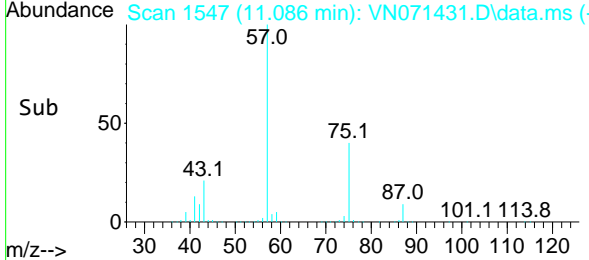
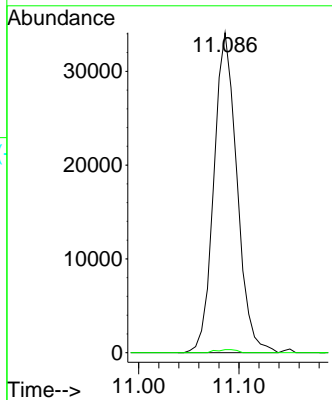
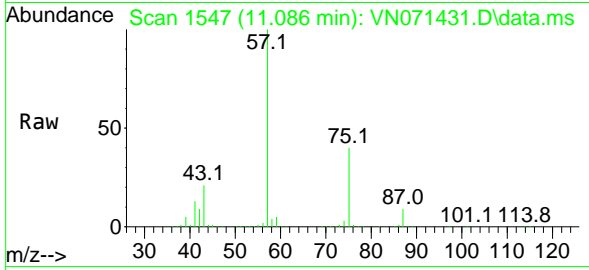




#57
 1,3-Dichloropropane
 Concen: 2.908 ug/l
 RT: 11.086 min Scan# 11
 Delta R.T. 0.047 min
 Lab File: VN071431.D
 Acq: 21 Mar 2022 20:29

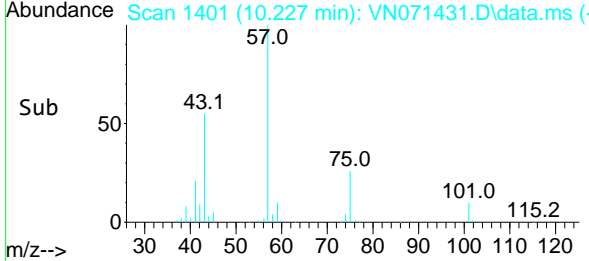
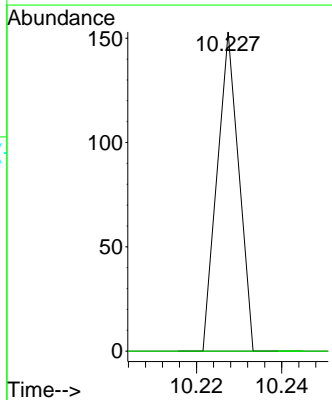
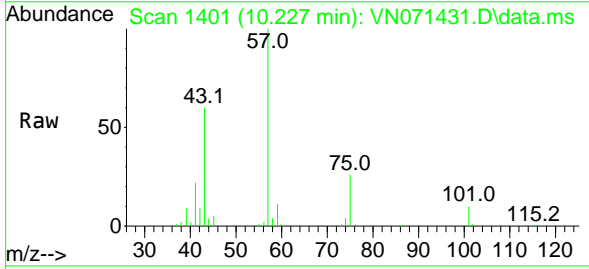
Instrument : MSVOA_N
 ClientSampleId : G-1-8-15-16

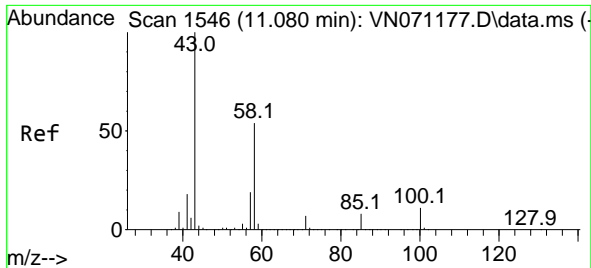
Tgt Ion: 76 Resp: 54576
 Ion Ratio Lower Upper
 76 100
 78 0.9 25.7 38.5#



#58
 2-Chloroethyl Vinyl ether
 Concen: 27.879 ug/l
 RT: 10.227 min Scan# 1401
 Delta R.T. 0.188 min
 Lab File: VN071431.D
 Acq: 21 Mar 2022 20:29

Tgt Ion: 63 Resp: 54
 Ion Ratio Lower Upper
 63 100
 106 0.0 23.9 35.9#

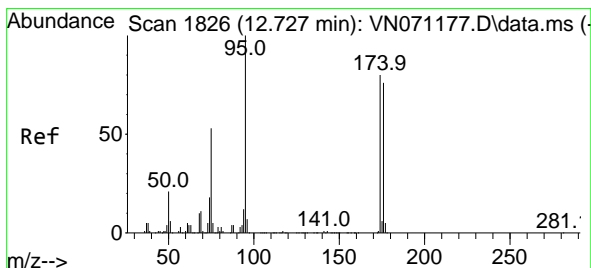
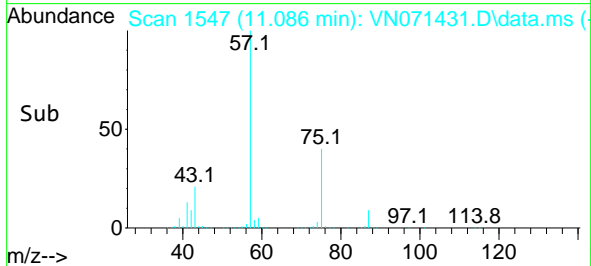
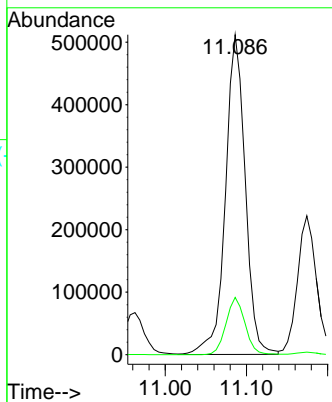
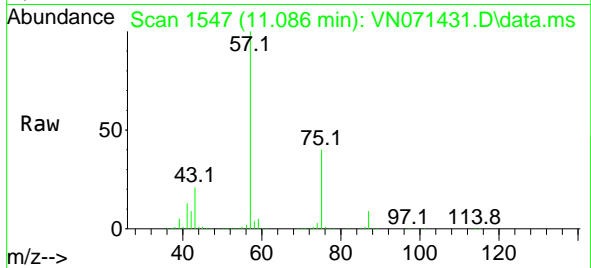




#59
 2-Hexanone
 Concen: 70.757 ug/l
 RT: 11.086 min Scan# 111
 Delta R.T. 0.006 min
 Lab File: VN071431.D
 Acq: 21 Mar 2022 20:29

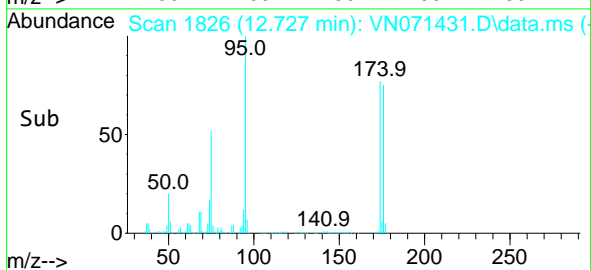
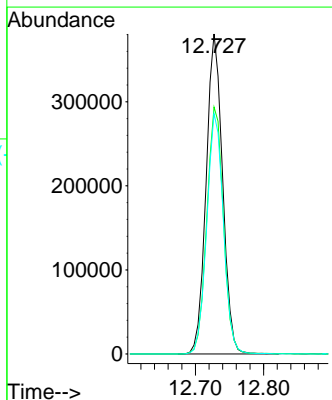
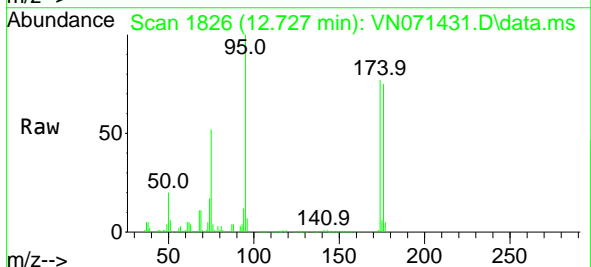
Instrument :
 MSVOA_N
 ClientSampleId :
 G-1-8-15-16

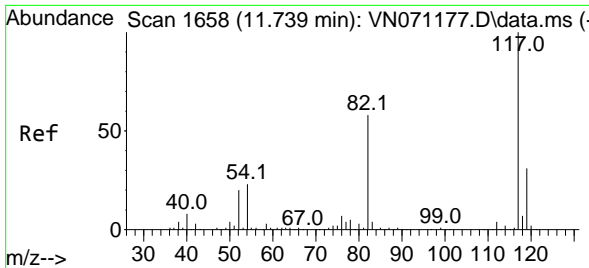
Tgt Ion: 43 Resp: 867189
 Ion Ratio Lower Upper
 43 100
 58 17.3 26.9 80.7#



#62
 4-Bromofluorobenzene
 Concen: 53.320 ug/l
 RT: 12.727 min Scan# 1826
 Delta R.T. 0.000 min
 Lab File: VN071431.D
 Acq: 21 Mar 2022 20:29

Tgt Ion: 95 Resp: 638093
 Ion Ratio Lower Upper
 95 100
 174 78.2 0.0 187.2
 176 75.8 0.0 181.4



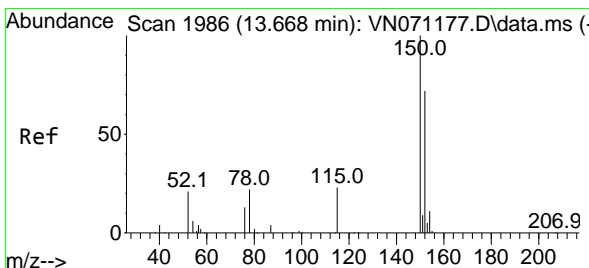
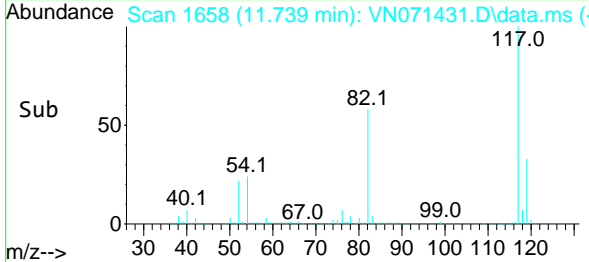
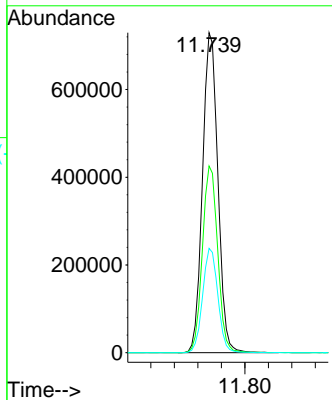
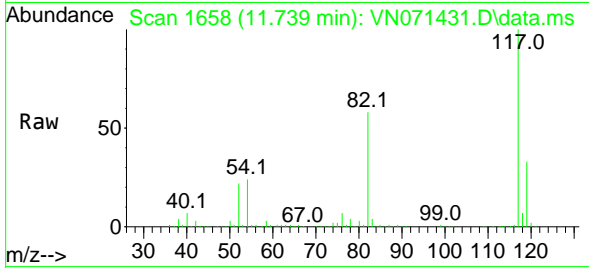


#63
 Chlorobenzene-d5
 Concen: 50.000 ug/l
 RT: 11.739 min Scan# 117
 Delta R.T. -0.000 min
 Lab File: VN071431.D
 Acq: 21 Mar 2022 20:29

Instrument : MSVOA_N
 ClientSampleId : G-1-8-15-16

Tgt Ion:117 Resp: 1320395

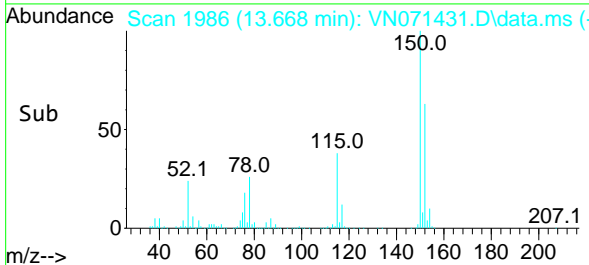
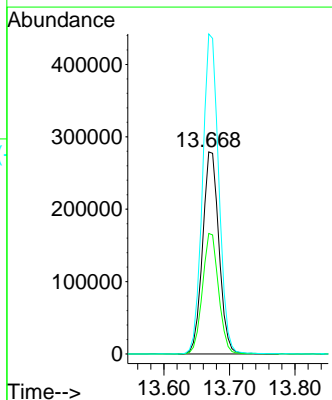
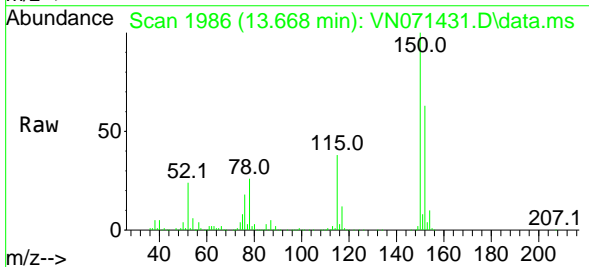
Ion	Ratio	Lower	Upper
117	100		
82	58.4	42.4	63.6
119	32.6	25.4	38.2

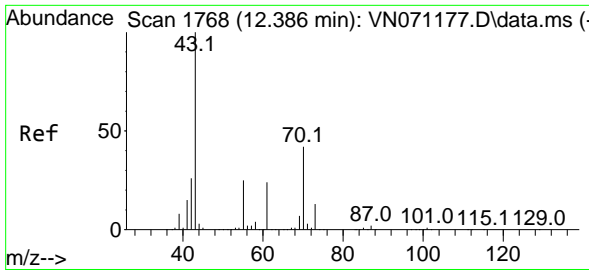


#72
 1,4-Dichlorobenzene-d4
 Concen: 50.000 ug/l
 RT: 13.668 min Scan# 1986
 Delta R.T. 0.000 min
 Lab File: VN071431.D
 Acq: 21 Mar 2022 20:29

Tgt Ion:152 Resp: 484770

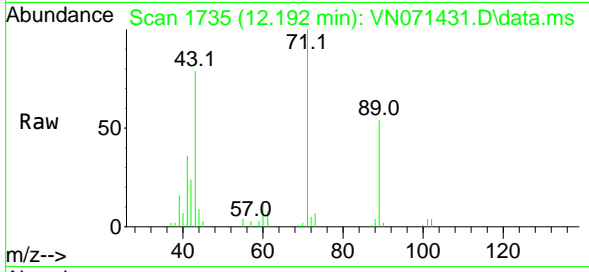
Ion	Ratio	Lower	Upper
152	100		
115	58.6	27.5	82.5
150	157.4	0.0	344.4





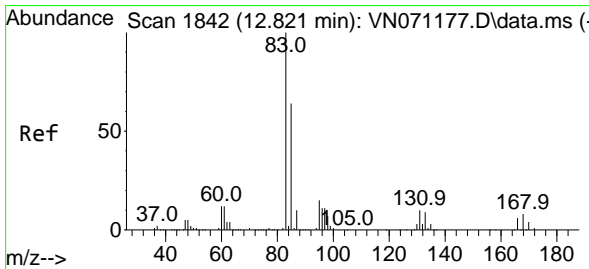
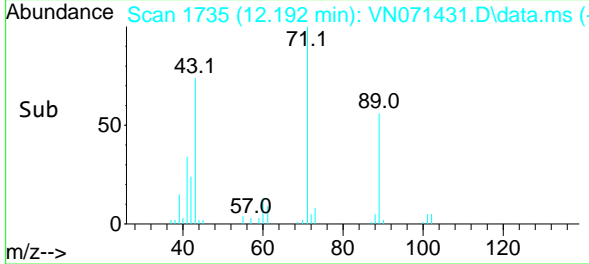
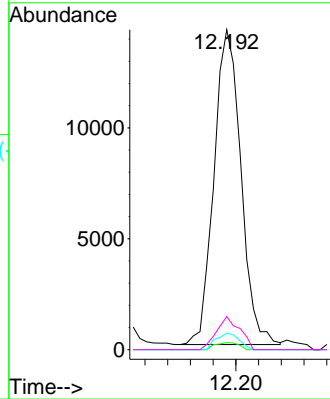
#74
 N-amy1 acetate
 Concen: 1.332 ug/l
 RT: 12.192 min Scan# 11
 Delta R.T. -0.194 min
 Lab File: VN071431.D
 Acq: 21 Mar 2022 20:29

Instrument :
 MSVOA_N
 ClientSampleId :
 G-1-8-15-16



Tgt Ion: 43 Resp: 23406

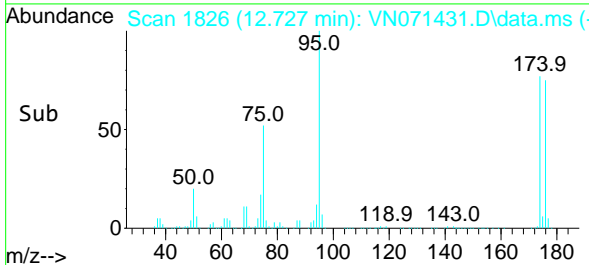
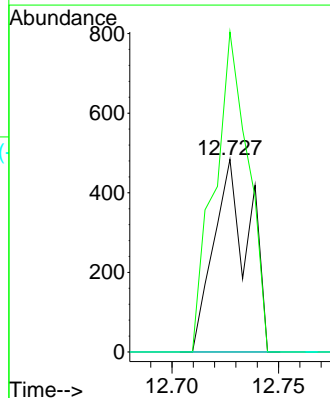
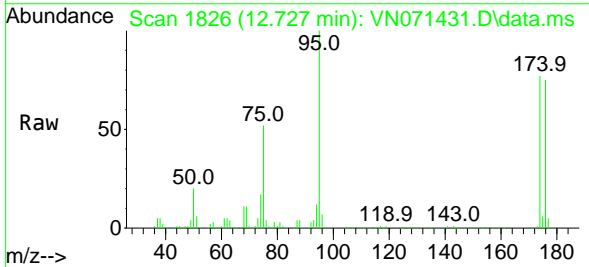
Ion	Ratio	Lower	Upper
43	100		
70	2.0	33.4	50.0#
55	4.5	19.3	28.9#
61	9.0	18.5	27.7#

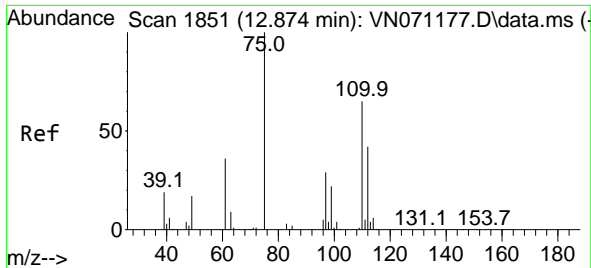


#75
 1,1,2,2-Tetrachloroethane
 Concen: Below Cal
 RT: 12.727 min Scan# 1826
 Delta R.T. -0.094 min
 Lab File: VN071431.D
 Acq: 21 Mar 2022 20:29

Tgt Ion: 83 Resp: 556

Ion	Ratio	Lower	Upper
83	100		
131	160.3	5.5	16.5#
85	0.0	32.4	97.2#

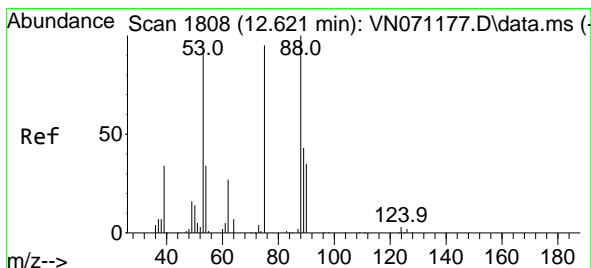
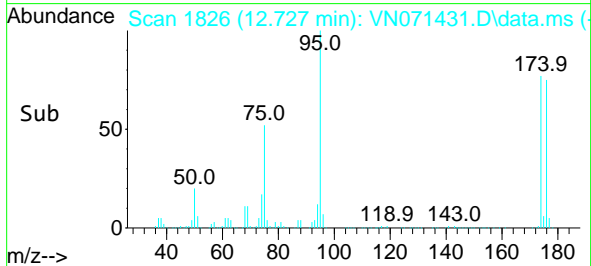
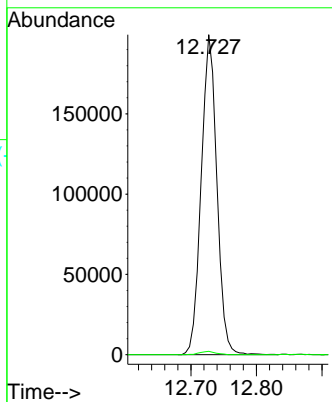
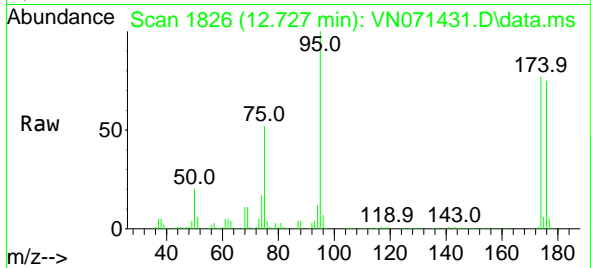




#76
 1,2,3-Trichloropropane
 Concen: 26.912 ug/l
 RT: 12.727 min Scan# 1826
 Delta R.T. -0.147 min
 Lab File: VN071431.D
 Acq: 21 Mar 2022 20:29

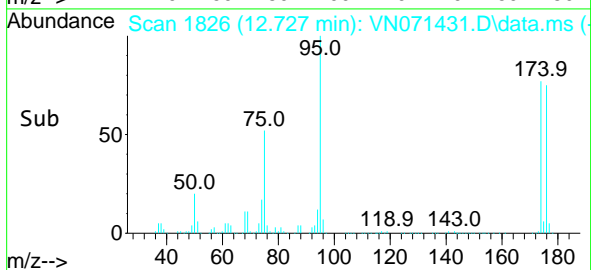
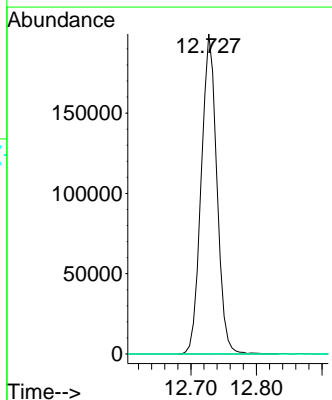
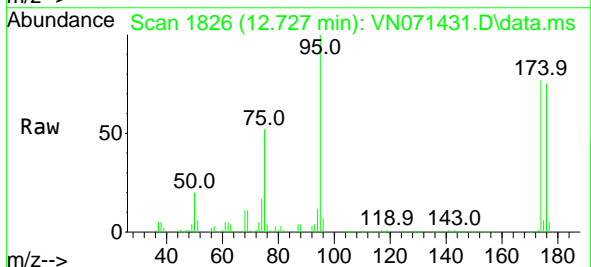
Instrument : MSVOA_N
 ClientSampleId : G-1-8-15-16

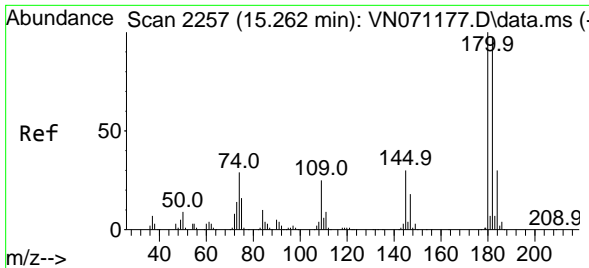
Tgt Ion: 75 Resp: 331501
 Ion Ratio Lower Upper
 75 100
 77 1.1 82.6 247.8#



#81
 trans-1,4-Dichloro-2-butene
 Concen: 73.922 ug/l
 RT: 12.727 min Scan# 1826
 Delta R.T. 0.106 min
 Lab File: VN071431.D
 Acq: 21 Mar 2022 20:29

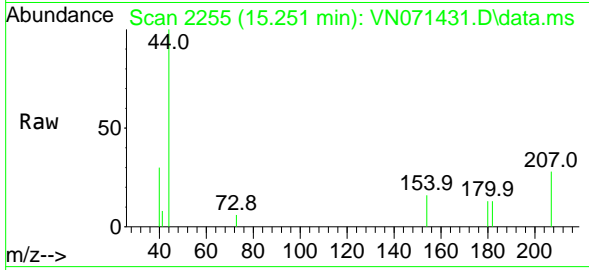
Tgt Ion: 75 Resp: 331501
 Ion Ratio Lower Upper
 75 100
 53 0.0 90.5 135.7#
 89 0.0 38.2 57.4#



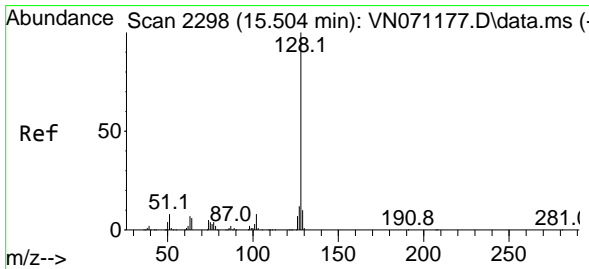
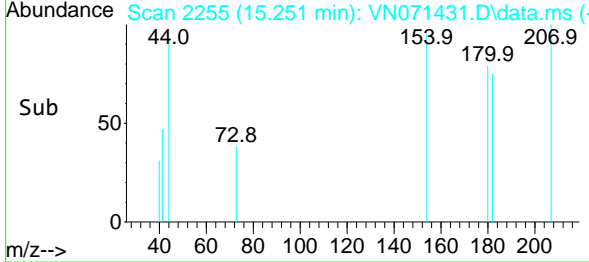
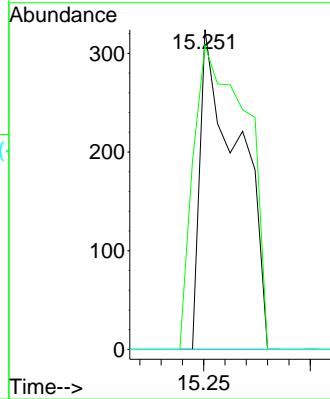


#93
 1,2,4-Trichlorobenzene
 Concen: 3.038 ug/l
 RT: 15.251 min Scan# 21
 Delta R.T. -0.011 min
 Lab File: VN071431.D
 Acq: 21 Mar 2022 20:29

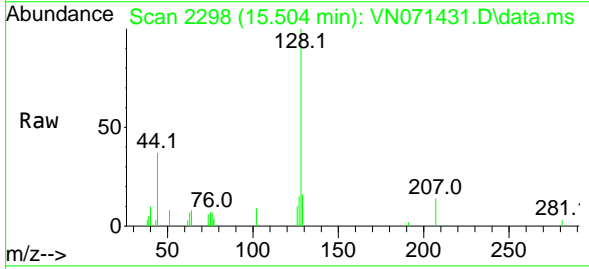
Instrument : MSVOA_N
 ClientSampleId : G-1-8-15-16



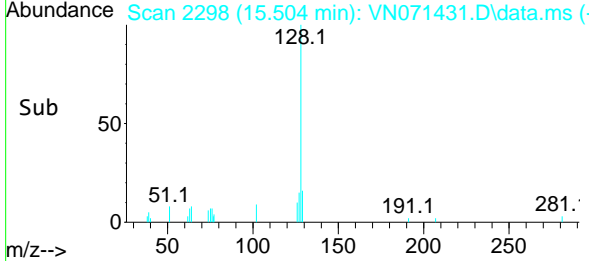
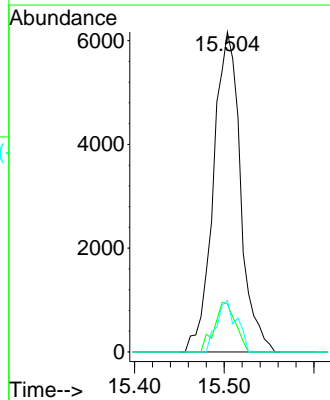
Tgt Ion:180 Resp: 408
 Ion Ratio Lower Upper
 180 100
 182 130.9 48.3 144.9
 145 0.0 14.5 43.5#

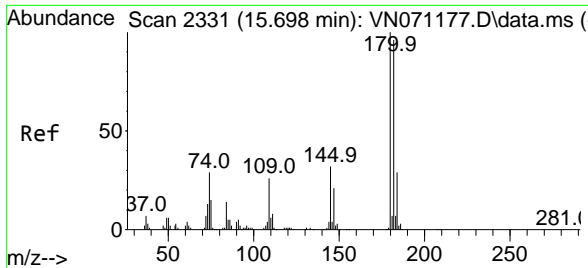


#95
 Naphthalene
 Concen: 5.590 ug/l
 RT: 15.504 min Scan# 2298
 Delta R.T. -0.000 min
 Lab File: VN071431.D
 Acq: 21 Mar 2022 20:29



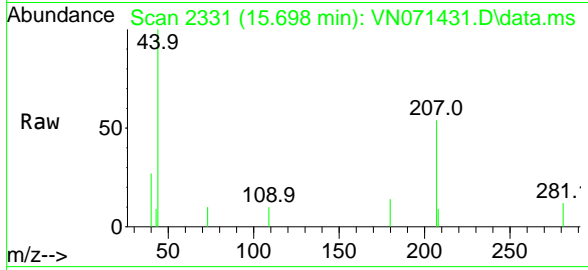
Tgt Ion:128 Resp: 12916
 Ion Ratio Lower Upper
 128 100
 127 12.1 10.5 15.7
 129 11.9 8.7 13.1





#96
 1,2,3-Trichlorobenzene
 Concen: 2.752 ug/l
 RT: 15.698 min Scan# 21
 Delta R.T. -0.000 min
 Lab File: VN071431.D
 Acq: 21 Mar 2022 20:29

Instrument :
 MSVOA_N
 ClientSampleId :
 G-1-8-15-16



Tgt Ion:180 Resp: 161

Ion	Ratio	Lower	Upper
180	100		
182	46.6	47.4	142.2#
145	0.0	15.0	45.1#

