

Data Path : Z:\voasrv\HPCHEM1\MSVOA_N\Data\VN032122\
 Data File : VN071450.D
 Acq On : 22 Mar 2022 04:56
 Operator : JC\MD
 Sample : N2017-05
 Misc : 5.0mL/MSVOA_N/WATER
 ALS Vial : 39 Sample Multiplier: 1

Instrument :
 MSVOA_N
 ClientSampleId :
 TWP-4

Quant Time: Mar 22 06:32:52 2022
 Quant Method : Z:\voasrv\HPCHEM1\MSVOA_N\methods\82N030722W.M
 Quant Title : SW846 8260
 QLast Update : Tue Mar 08 06:52:46 2022
 Response via : Initial Calibration

Compound	R.T.	QIon	Response	Conc	Units	Dev(Min)

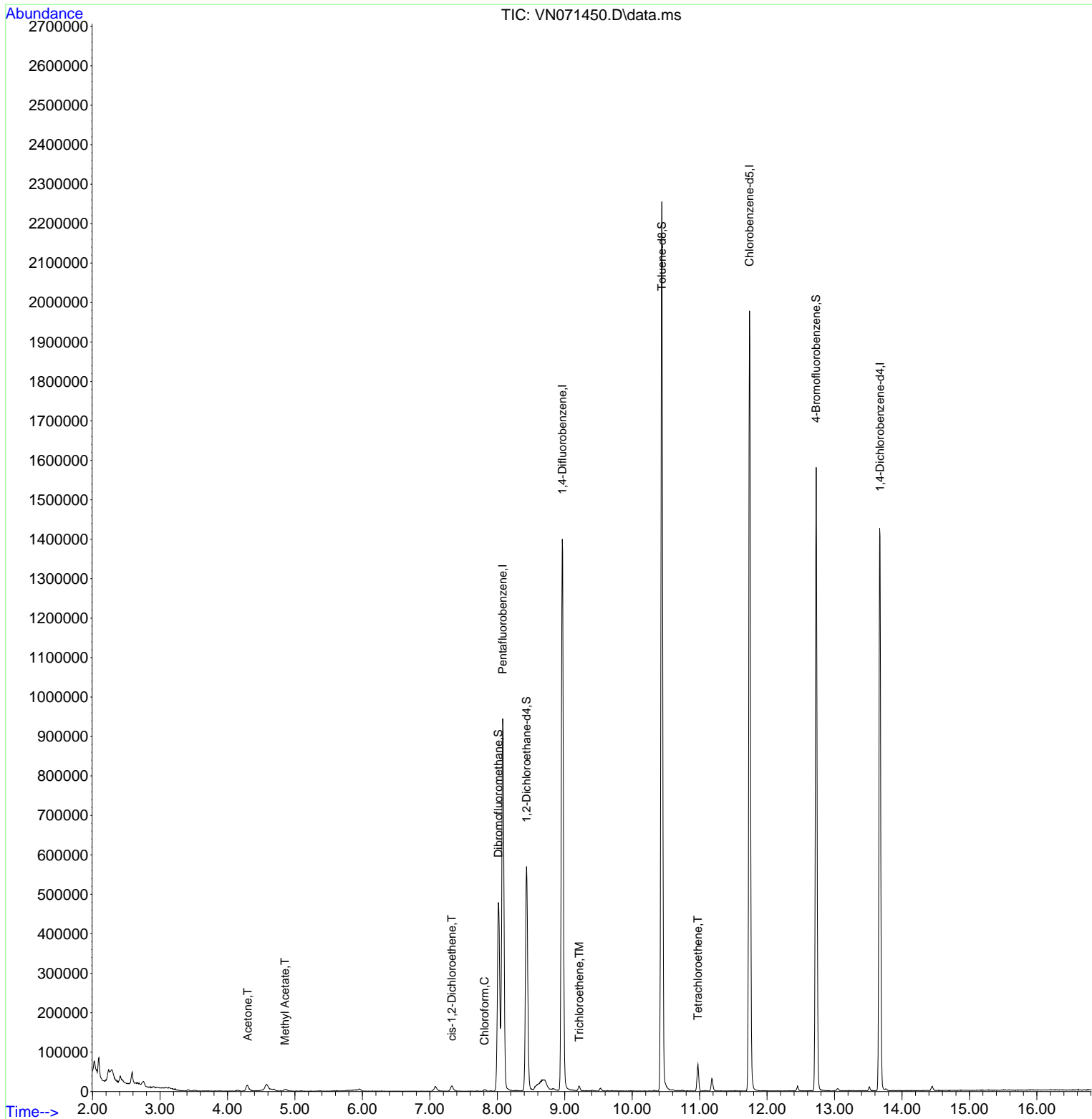
Internal Standards						
1) Pentafluorobenzene	8.080	168	726806	50.000	ug/l	0.00
34) 1,4-Difluorobenzene	8.963	114	1227149	50.000	ug/l	0.00
63) Chlorobenzene-d5	11.739	117	1146706	50.000	ug/l	0.00
72) 1,4-Dichlorobenzene-d4	13.674	152	401384	50.000	ug/l	0.00
System Monitoring Compounds						
33) 1,2-Dichloroethane-d4	8.433	65	475785	47.764	ug/l	0.00
Spiked Amount	50.000	Range	61 - 141	Recovery	=	95.520%
35) Dibromofluoromethane	8.016	113	357615	46.181	ug/l	0.00
Spiked Amount	50.000	Range	69 - 133	Recovery	=	92.360%
50) Toluene-d8	10.439	98	1517460	48.670	ug/l	0.00
Spiked Amount	50.000	Range	65 - 126	Recovery	=	97.340%
62) 4-Bromofluorobenzene	12.727	95	539958	51.143	ug/l	0.00
Spiked Amount	50.000	Range	58 - 135	Recovery	=	102.280%
Target Compounds						
						Qvalue
16) Acetone	4.298	43	25838	5.331	ug/l	91
18) Methyl Acetate	4.851	43	10683	1.283	ug/l	95
27) cis-1,2-Dichloroethene	7.328	96	6414	0.678	ug/l	90
30) Chloroform	7.810	83	3954	0.251	ug/l	85
44) Trichloroethene	9.216	130	4388	0.497	ug/l	71
64) Tetrachloroethene	10.974	164	15157	1.895	ug/l	94

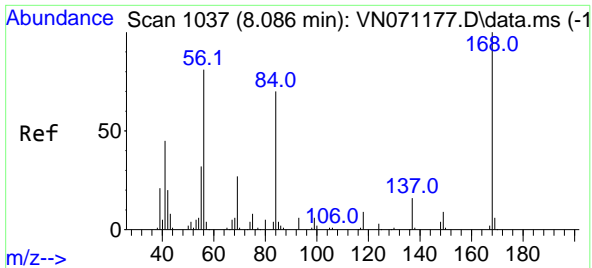
(#) = qualifier out of range (m) = manual integration (+) = signals summed

Data Path : Z:\voasrv\HPCHEM1\MSVOA_N\Data\VN032122\
 Data File : VN071450.D
 Acq On : 22 Mar 2022 04:56
 Operator : JC\MD
 Sample : N2017-05
 Misc : 5.0mL/MSVOA_N/WATER
 ALS Vial : 39 Sample Multiplier: 1

Instrument :
 MSVOA_N
 ClientSampleId :
 TWP-4

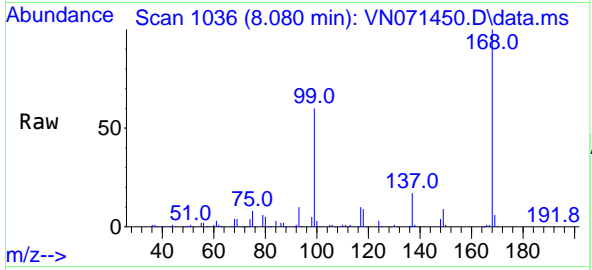
Quant Time: Mar 22 06:32:52 2022
 Quant Method : Z:\voasrv\HPCHEM1\MSVOA_N\methods\82N030722W.M
 Quant Title : SW846 8260
 QLast Update : Tue Mar 08 06:52:46 2022
 Response via : Initial Calibration



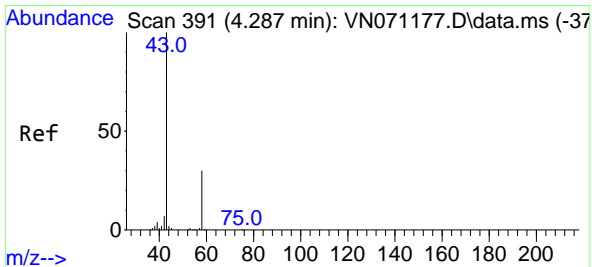
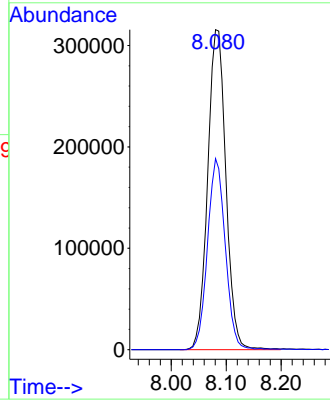
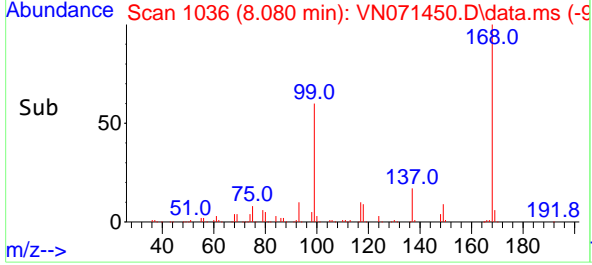


#1
 Pentafluorobenzene
 Concen: 50.000 ug/l
 RT: 8.080 min Scan# 1036
 Delta R.T. -0.006 min
 Lab File: VN071450.D
 Acq: 22 Mar 2022 04:56

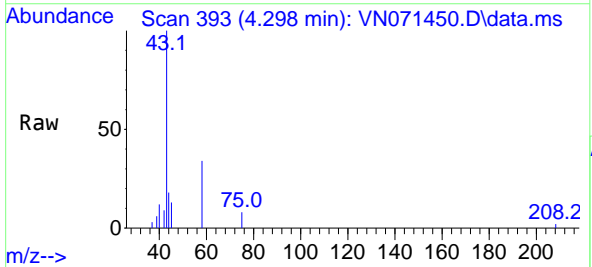
Instrument : MSVOA_N
 ClientSampleId : TWP-4



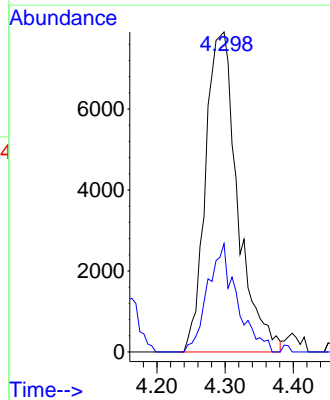
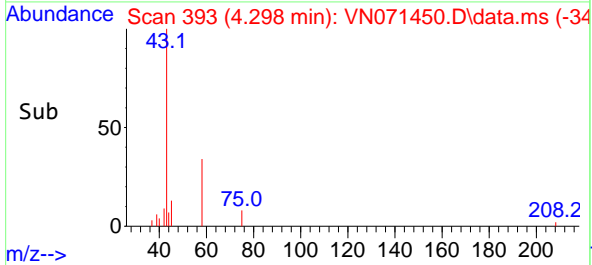
Tgt Ion:168 Resp: 726806
 Ion Ratio Lower Upper
 168 100
 99 59.7 41.3 61.9

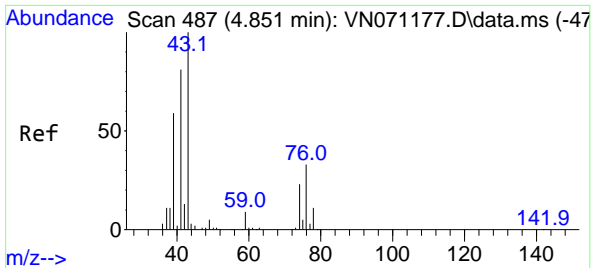


#16
 Acetone
 Concen: 5.331 ug/l
 RT: 4.298 min Scan# 393
 Delta R.T. 0.012 min
 Lab File: VN071450.D
 Acq: 22 Mar 2022 04:56



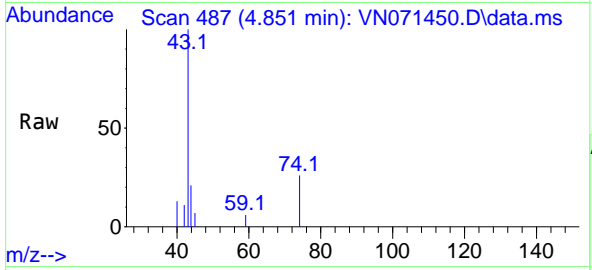
Tgt Ion: 43 Resp: 25838
 Ion Ratio Lower Upper
 43 100
 58 33.9 23.1 34.7



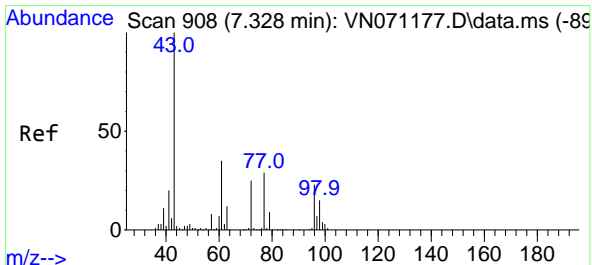
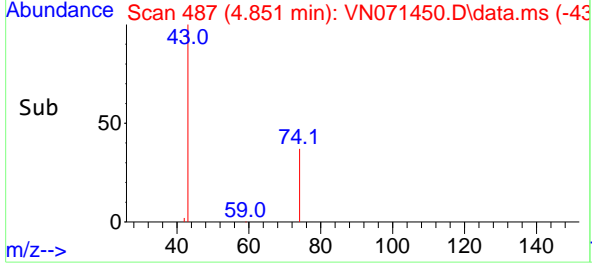
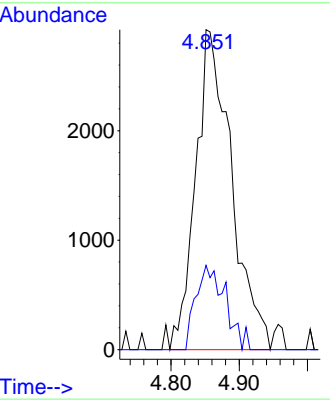


#18
 Methyl Acetate
 Concen: 1.283 ug/l
 RT: 4.851 min Scan# 487
 Delta R.T. 0.000 min
 Lab File: VN071450.D
 Acq: 22 Mar 2022 04:56

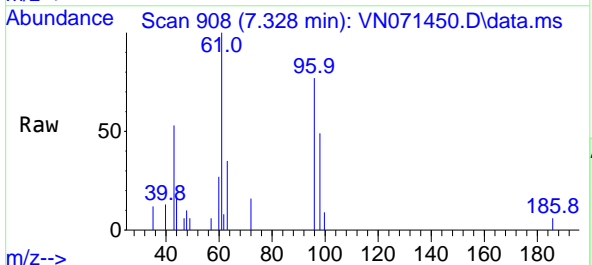
Instrument : MSVOA_N
 Client Sample Id : TWP-4



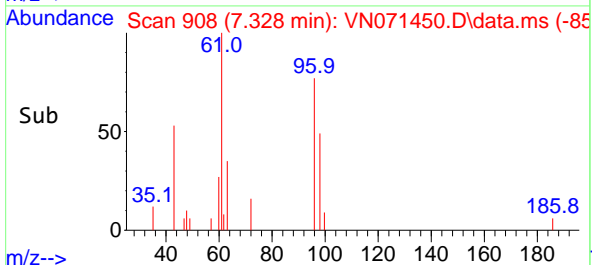
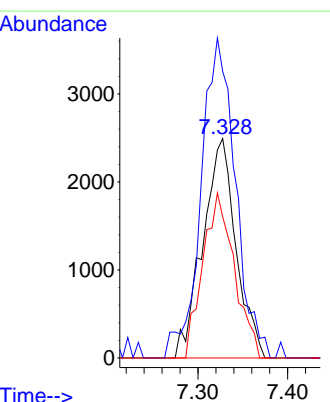
Tgt Ion: 43 Resp: 10683
 Ion Ratio Lower Upper
 43 100
 74 21.7 19.4 29.2

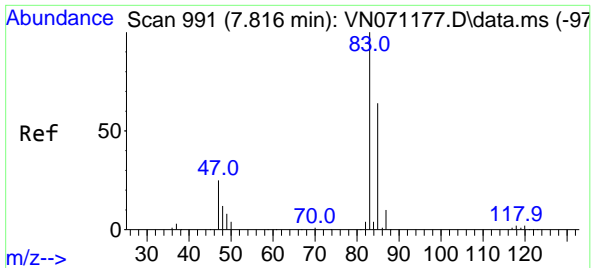


#27
 cis-1,2-Dichloroethene
 Concen: 0.678 ug/l
 RT: 7.328 min Scan# 908
 Delta R.T. -0.000 min
 Lab File: VN071450.D
 Acq: 22 Mar 2022 04:56



Tgt Ion: 96 Resp: 6414
 Ion Ratio Lower Upper
 96 100
 61 150.9 0.0 275.0
 98 71.0 0.0 129.6

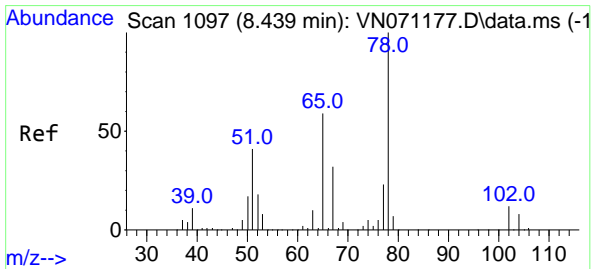
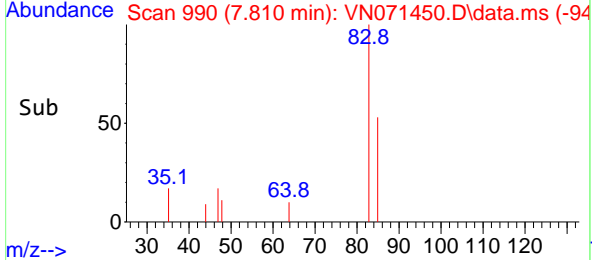
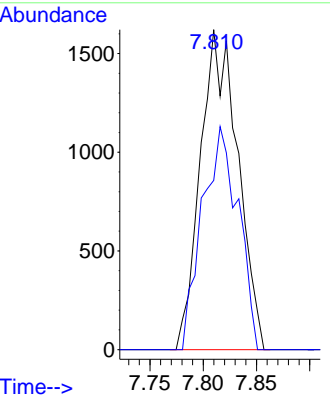
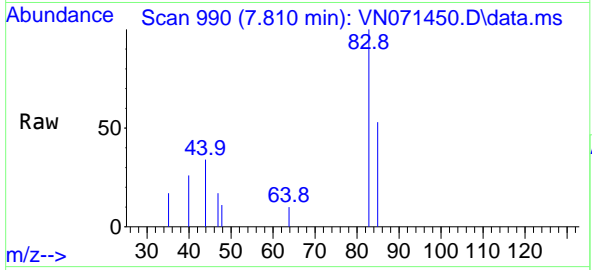




#30
 Chloroform
 Concen: 0.251 ug/l
 RT: 7.810 min Scan# 91
 Delta R.T. -0.006 min
 Lab File: VN071450.D
 Acq: 22 Mar 2022 04:56

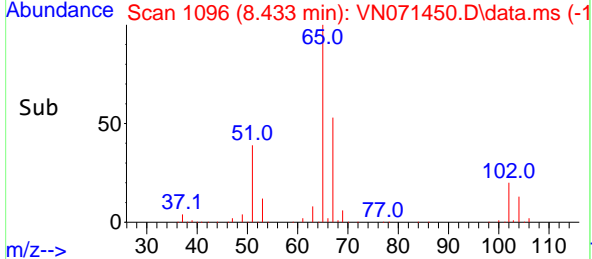
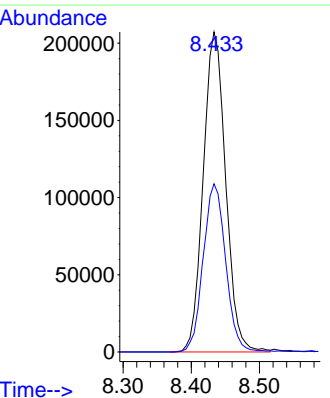
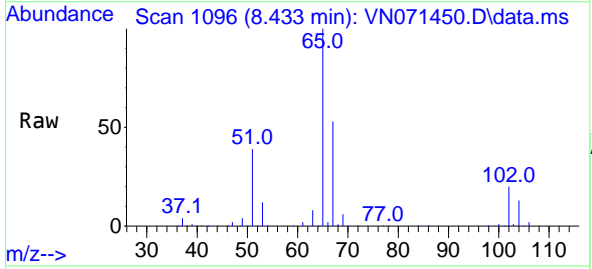
Instrument : MSVOA_N
 ClientSampleId : TWP-4

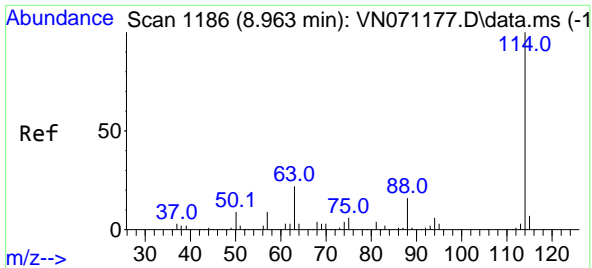
Tgt Ion: 83 Resp: 3954
 Ion Ratio Lower Upper
 83 100
 85 52.9 51.9 77.9



#33
 1,2-Dichloroethane-d4
 Concen: 47.764 ug/l
 RT: 8.433 min Scan# 1096
 Delta R.T. -0.006 min
 Lab File: VN071450.D
 Acq: 22 Mar 2022 04:56

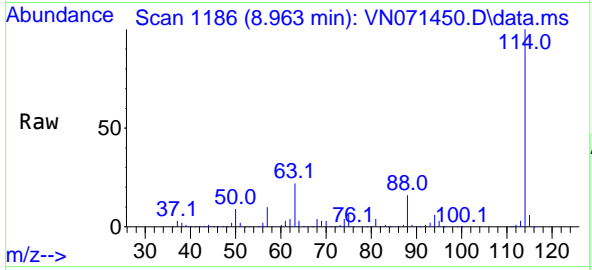
Tgt Ion: 65 Resp: 475785
 Ion Ratio Lower Upper
 65 100
 67 52.8 0.0 103.0



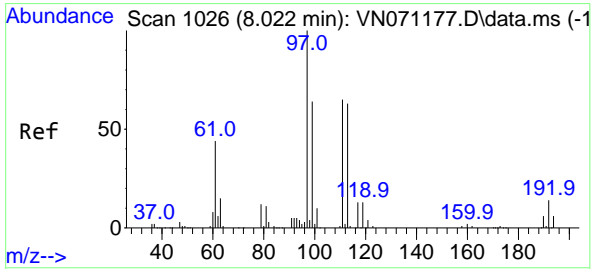
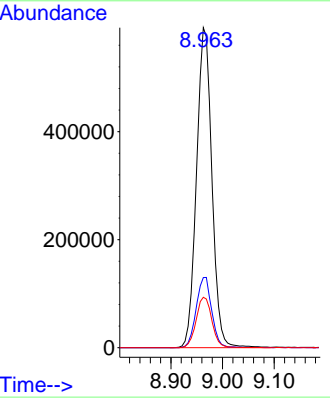
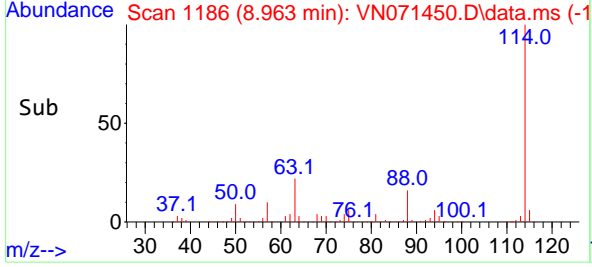


#34
 1,4-Difluorobenzene
 Concen: 50.000 ug/l
 RT: 8.963 min Scan# 1186
 Delta R.T. -0.000 min
 Lab File: VN071450.D
 Acq: 22 Mar 2022 04:56

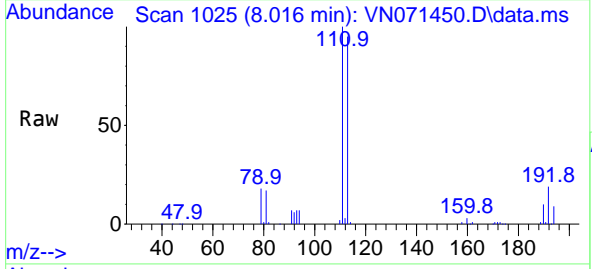
Instrument : MSVOA_N
 ClientSampleId : TWP-4



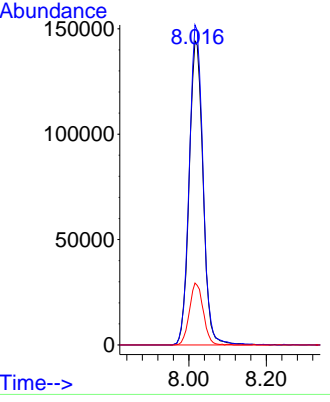
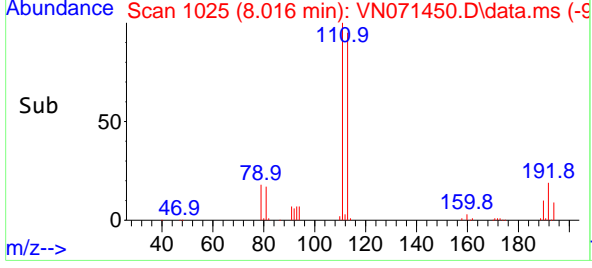
Tgt Ion:114 Resp: 1227149
 Ion Ratio Lower Upper
 114 100
 63 21.9 0.0 37.8
 88 15.7 0.0 27.4

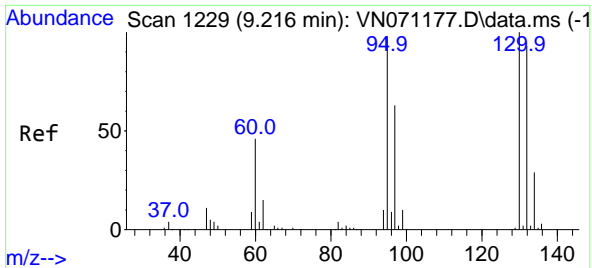


#35
 Dibromofluoromethane
 Concen: 46.181 ug/l
 RT: 8.016 min Scan# 1025
 Delta R.T. -0.006 min
 Lab File: VN071450.D
 Acq: 22 Mar 2022 04:56



Tgt Ion:113 Resp: 357615
 Ion Ratio Lower Upper
 113 100
 111 104.0 82.2 123.2
 192 20.3 16.9 25.3

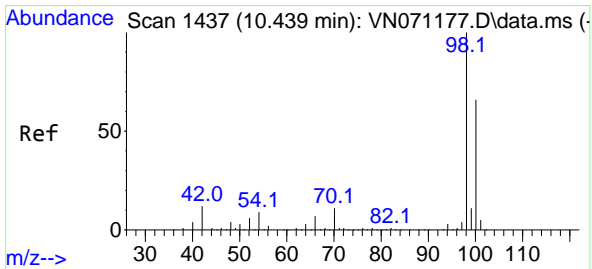
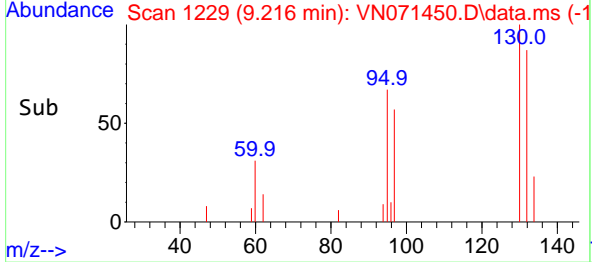
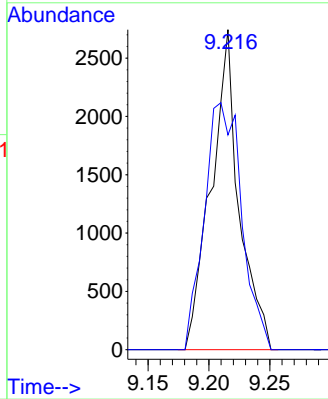
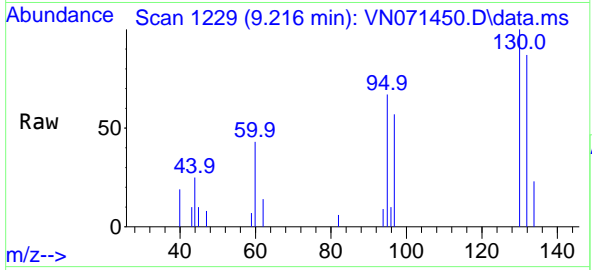




#44
 Trichloroethene
 Concen: 0.497 ug/l
 RT: 9.216 min Scan# 11
 Delta R.T. -0.000 min
 Lab File: VN071450.D
 Acq: 22 Mar 2022 04:56

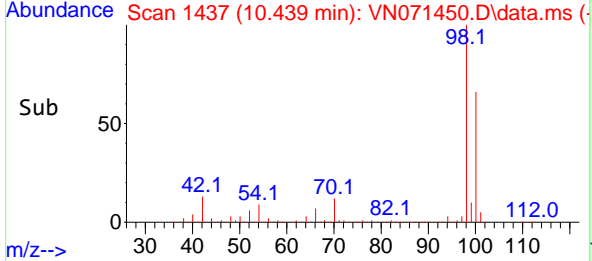
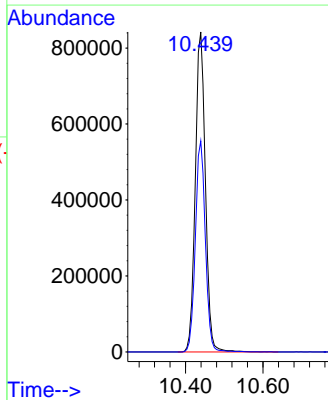
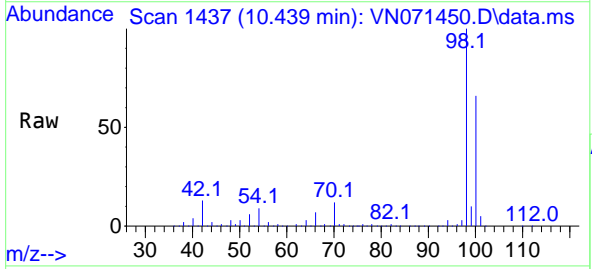
Instrument :
 MSVOA_N
 ClientSampleId :
 TWP-4

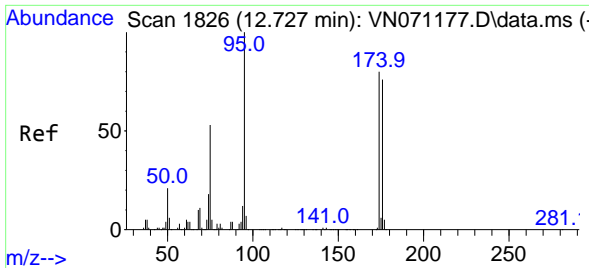
Tgt Ion:130 Resp: 4388
 Ion Ratio Lower Upper
 130 100
 95 67.1 0.0 191.2



#50
 Toluene-d8
 Concen: 48.670 ug/l
 RT: 10.439 min Scan# 1437
 Delta R.T. 0.000 min
 Lab File: VN071450.D
 Acq: 22 Mar 2022 04:56

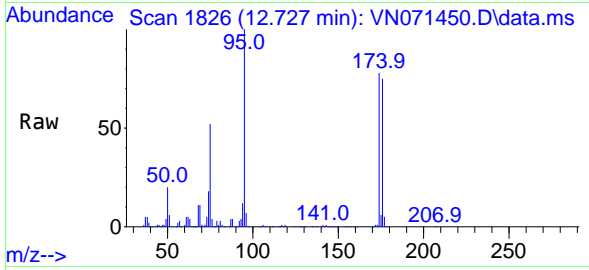
Tgt Ion: 98 Resp: 1517460
 Ion Ratio Lower Upper
 98 100
 100 65.5 50.4 75.6



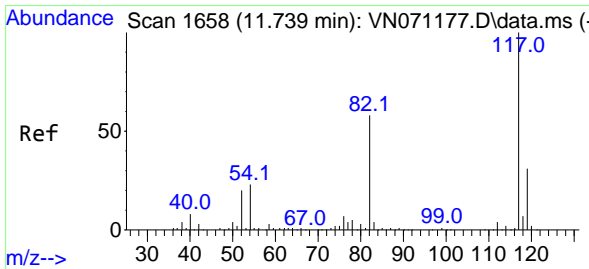
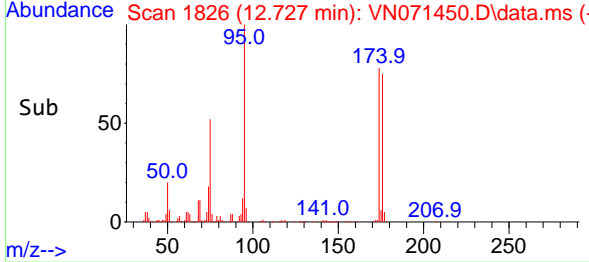
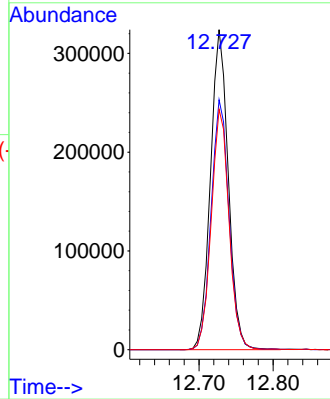


#62
 4-Bromofluorobenzene
 Concen: 51.143 ug/l
 RT: 12.727 min Scan# 1826
 Delta R.T. 0.000 min
 Lab File: VN071450.D
 Acq: 22 Mar 2022 04:56

Instrument : MSVOA_N
 ClientSampleId : TWP-4

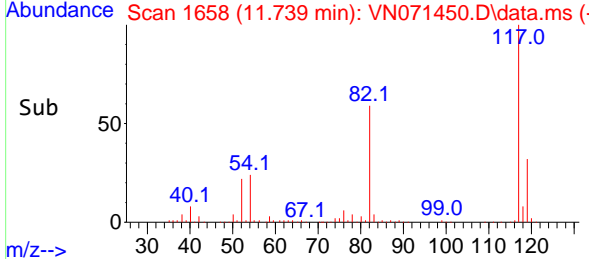
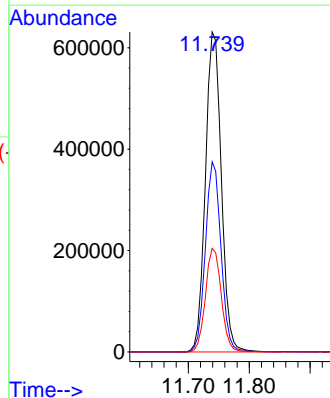
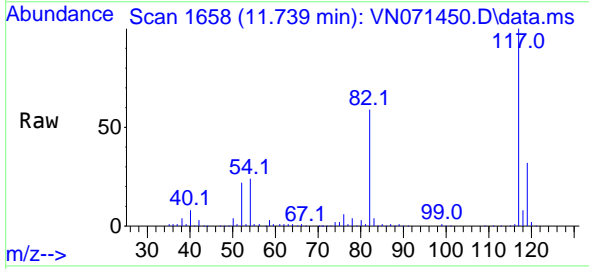


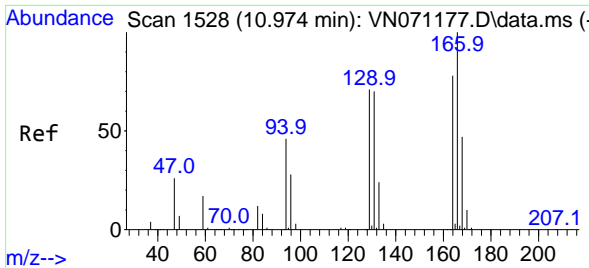
Tgt Ion: 95 Resp: 539958
 Ion Ratio Lower Upper
 95 100
 174 78.6 0.0 187.2
 176 75.2 0.0 181.4



#63
 Chlorobenzene-d5
 Concen: 50.000 ug/l
 RT: 11.739 min Scan# 1658
 Delta R.T. -0.000 min
 Lab File: VN071450.D
 Acq: 22 Mar 2022 04:56

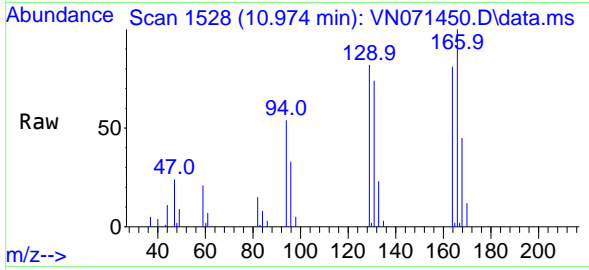
Tgt Ion: 117 Resp: 1146706
 Ion Ratio Lower Upper
 117 100
 82 59.4 42.4 63.6
 119 32.3 25.4 38.2



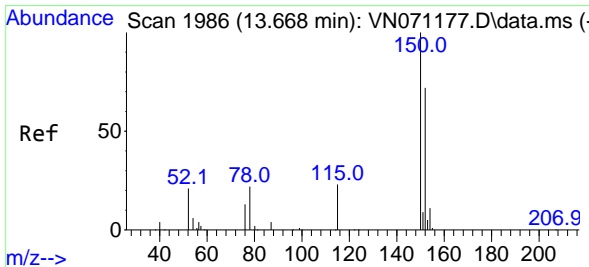
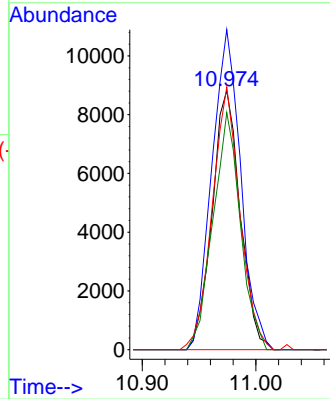
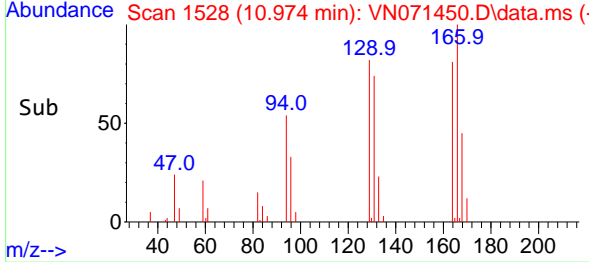


#64
 Tetrachloroethene
 Concen: 1.895 ug/l
 RT: 10.974 min Scan# 11
 Delta R.T. 0.000 min
 Lab File: VN071450.D
 Acq: 22 Mar 2022 04:56

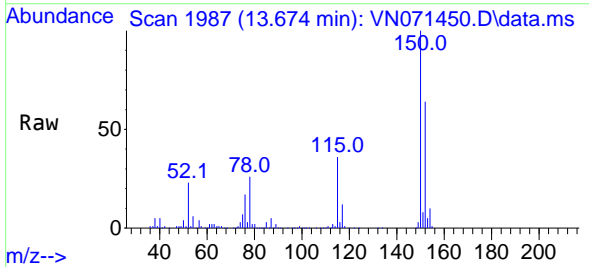
Instrument : MSVOA_N
 ClientSampleId : TWP-4



Tgt Ion:164 Resp: 15157
 Ion Ratio Lower Upper
 164 100
 166 123.5 101.9 152.9
 129 101.4 72.0 108.0
 131 91.5 70.9 106.3



#72
 1,4-Dichlorobenzene-d4
 Concen: 50.000 ug/l
 RT: 13.674 min Scan# 1987
 Delta R.T. 0.006 min
 Lab File: VN071450.D
 Acq: 22 Mar 2022 04:56



Tgt Ion:152 Resp: 401384
 Ion Ratio Lower Upper
 152 100
 115 58.7 27.5 82.5
 150 157.3 0.0 344.4

