

Data Path : Z:\voasrv\HPCHEM1\MSVOA_N\Data\VN032124\
 Data File : VN081527.D
 Acq On : 21 Mar 2024 18:11
 Operator : JC\MD
 Sample : P1798-10 20X
 Misc : 5.0mL/MSVOA_N/WATER
 ALS Vial : 20 Sample Multiplier: 1

Instrument :
 MSVOA_N
 ClientSampleId :
 S-10

Quant Time: Mar 22 05:11:00 2024
 Quant Method : Z:\voasrv\HPCHEM1\MSVOA_N\methods\82N031824W.M
 Quant Title : SW846 8260
 QLast Update : Tue Mar 19 06:00:00 2024
 Response via : Initial Calibration

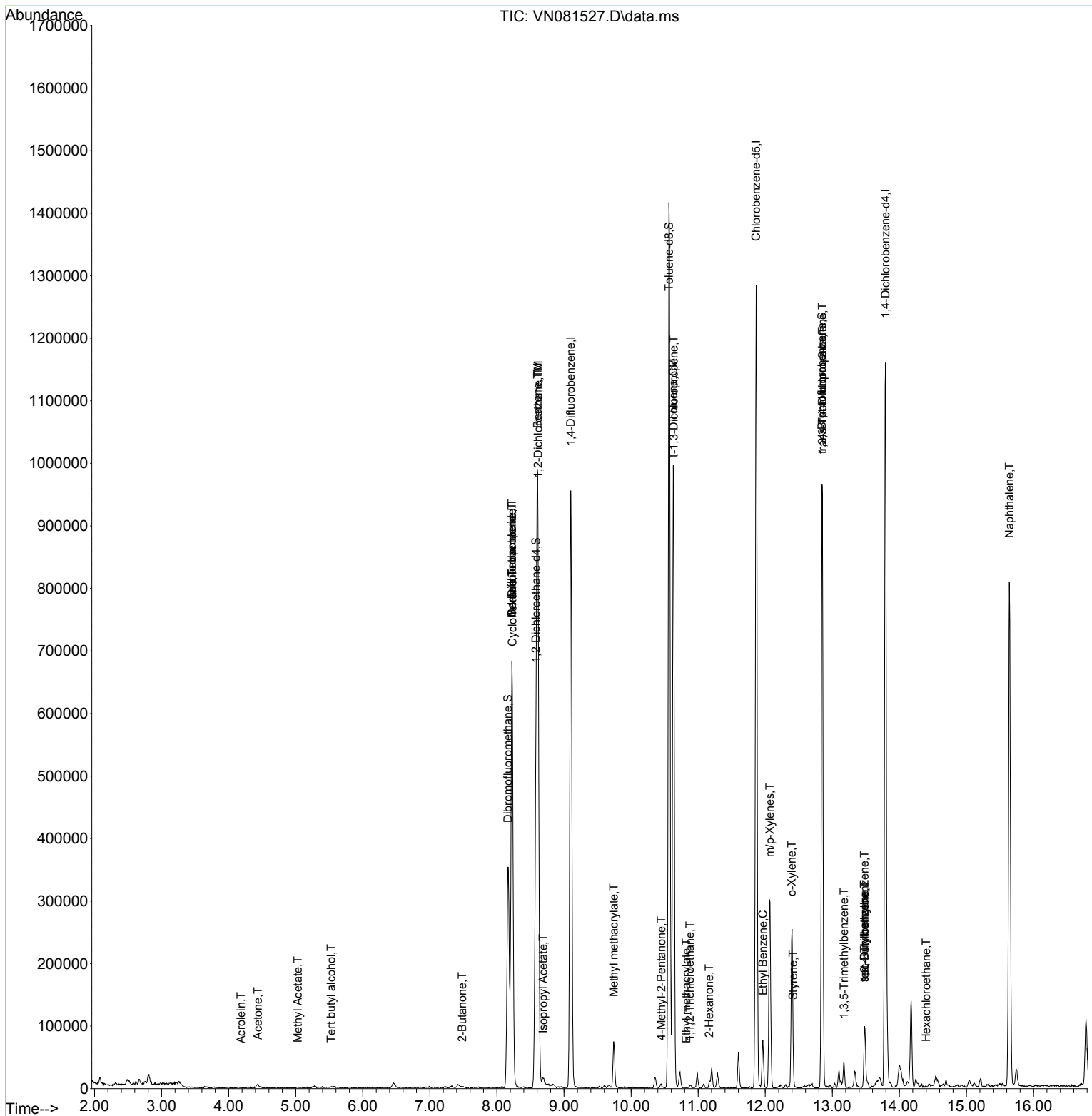
Compound	R.T.	QIon	Response	Conc	Units	Dev(Min)
Internal Standards						
1) Pentafluorobenzene	8.224	168	492634	50.000	ug/l	0.00
34) 1,4-Difluorobenzene	9.100	114	855139	50.000	ug/l	0.00
63) Chlorobenzene-d5	11.865	117	758335	50.000	ug/l	0.00
72) 1,4-Dichlorobenzene-d4	13.794	152	319545	50.000	ug/l	0.00
System Monitoring Compounds						
33) 1,2-Dichloroethane-d4	8.582	65	305740	48.666	ug/l	0.00
Spiked Amount	50.000	Range 74 - 125	Recovery	=	97.340%	
35) Dibromofluoromethane	8.165	113	254798	47.213	ug/l	0.00
Spiked Amount	50.000	Range 75 - 124	Recovery	=	94.420%	
50) Toluene-d8	10.565	98	1000817	51.301	ug/l	0.00
Spiked Amount	50.000	Range 86 - 113	Recovery	=	102.600%	
62) 4-Bromofluorobenzene	12.847	95	331704	48.254	ug/l	0.00
Spiked Amount	50.000	Range 64 - 133	Recovery	=	96.500%	
Target Compounds						
						Qvalue
11) Tert butyl alcohol	5.530	59	2244	2.050	ug/l #	72
13) Acrolein	4.183	56	318	0.324	ug/l #	15
16) Acetone	4.436	43	10148	4.998	ug/l	95
18) Methyl Acetate	5.030	43	1407	0.225	ug/l #	88
25) 2-Butanone	7.482	43	2146	0.616	ug/l	95
31) Cyclohexane	8.229	56	13327	1.304	ug/l #	5
36) 1,1-Dichloropropene	8.224	75	40906	4.504	ug/l #	50
38) Carbon Tetrachloride	8.224	117	53562	5.384	ug/l #	18
40) Benzene	8.606	78	973244	36.654	ug/l	96
42) 1,2-Dichloroethane	8.612	62	8891	0.951	ug/l	77
43) Isopropyl Acetate	8.688	43	16425	1.274	ug/l #	81
48) Methyl methacrylate	9.741	41	6964	1.171	ug/l #	45
51) 4-Methyl-2-Pentanone	10.453	43	4666	0.593	ug/l	98
52) Toluene	10.629	92	440973	26.129	ug/l	99
53) t-1,3-Dichloropropene	10.635	75	4921	0.477	ug/l #	1
55) 1,1,2-Trichloroethane	10.876	97	3535	0.520	ug/l #	13
56) Ethyl methacrylate	10.823	69	78	0.579	ug/l #	20
59) 2-Hexanone	11.165	43	11551	1.986	ug/l #	26
67) Ethyl Benzene	11.965	91	51375	1.650	ug/l	93
68) m/p-Xylenes	12.070	106	100037	8.569	ug/l	91
69) o-Xylene	12.394	106	67551	5.894	ug/l	98
70) Styrene	12.417	104	10180	0.551	ug/l #	1
76) 1,2,3-Trichloropropane	12.853	75	175494	22.959	ug/l #	1
80) 1,3,5-Trimethylbenzene	13.176	105	21264	0.945	ug/l	95
81) trans-1,4-Dichloro-2-b...	12.853	75	175494	62.044	ug/l #	14
83) tert-Butylbenzene	13.482	119	7650	0.394	ug/l #	70
84) 1,2,4-Trimethylbenzene	13.482	105	58073	2.568	ug/l	97
85) sec-Butylbenzene	13.482	105	58073	2.094	ug/l #	60
90) Hexachloroethane	14.400	117	877	0.204	ug/l #	21
95) Naphthalene	15.641	128	769570	34.520	ug/l	99

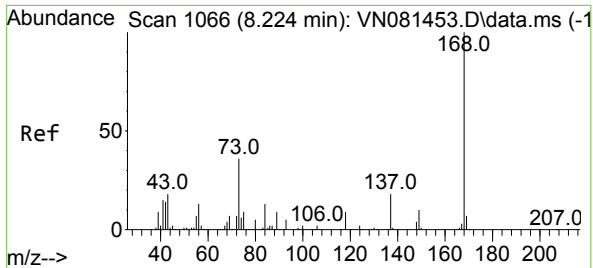
(#) = qualifier out of range (m) = manual integration (+) = signals summed

Data Path : Z:\voasrv\HPCHEM1\MSVOA_N\Data\VN032124\
 Data File : VN081527.D
 Acq On : 21 Mar 2024 18:11
 Operator : JC\MD
 Sample : P1798-10 20X
 Misc : 5.0mL/MSVOA_N/WATER
 ALS Vial : 20 Sample Multiplier: 1

Instrument :
 MSVOA_N
 ClientSampleId :
 S-10

Quant Time: Mar 22 05:11:00 2024
 Quant Method : Z:\voasrv\HPCHEM1\MSVOA_N\methods\82N031824W.M
 Quant Title : SW846 8260
 QLast Update : Tue Mar 19 06:00:00 2024
 Response via : Initial Calibration

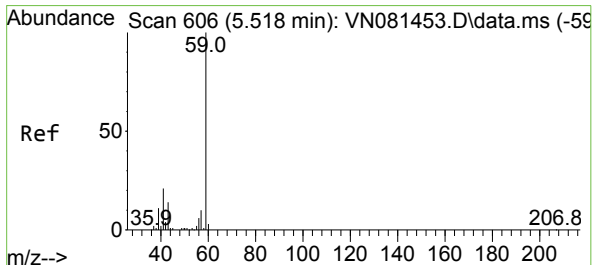
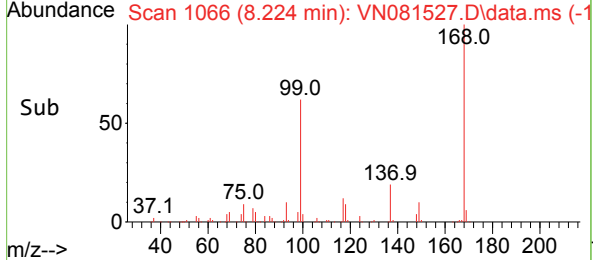
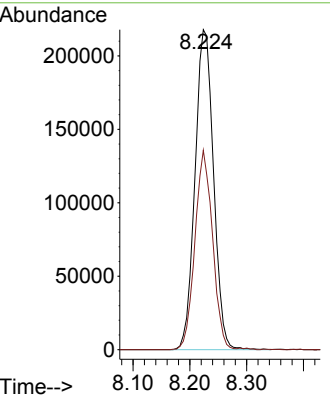
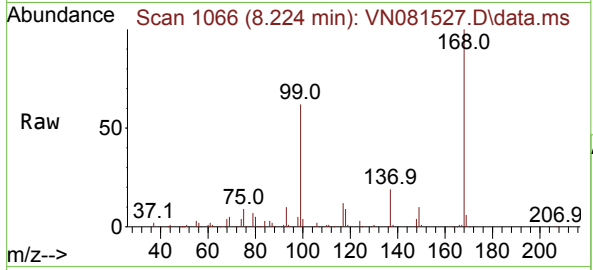




#1
 Pentafluorobenzene
 Concen: 50.000 ug/l
 RT: 8.224 min Scan# 1066
 Delta R.T. -0.000 min
 Lab File: VN081527.D
 Acq: 21 Mar 2024 18:11

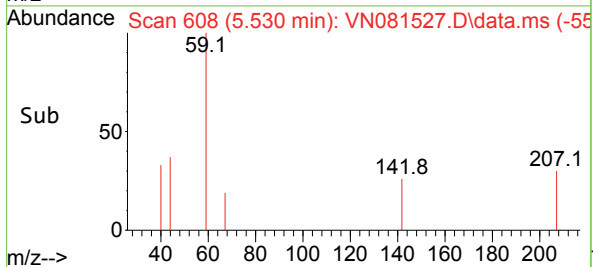
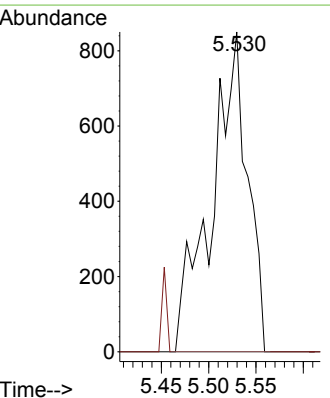
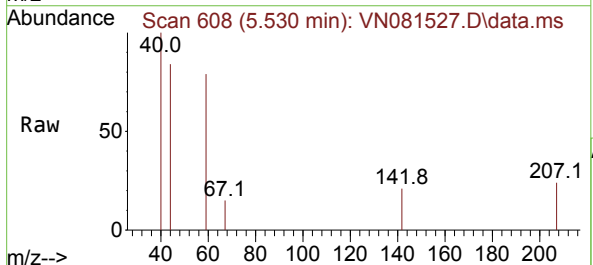
Instrument : MSVOA_N
 ClientSampleId : S-10

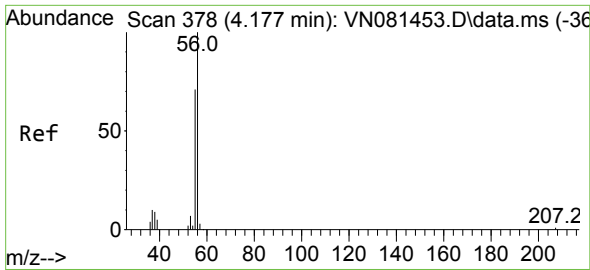
Tgt Ion:168 Resp: 492634
 Ion Ratio Lower Upper
 168 100
 99 62.3 59.9 89.9



#11
 Tert butyl alcohol
 Concen: 2.050 ug/l
 RT: 5.530 min Scan# 608
 Delta R.T. 0.012 min
 Lab File: VN081527.D
 Acq: 21 Mar 2024 18:11

Tgt Ion: 59 Resp: 2244
 Ion Ratio Lower Upper
 59 100
 57 0.0 8.6 12.8#

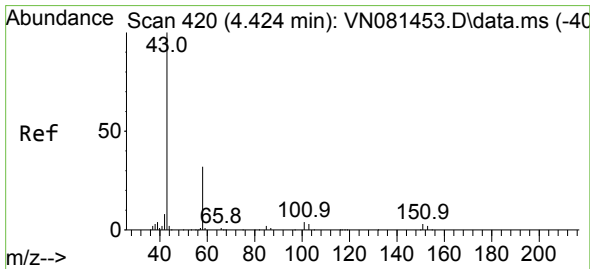
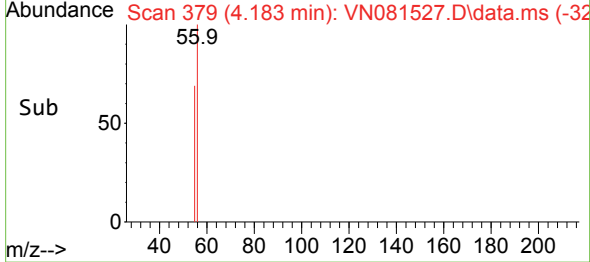
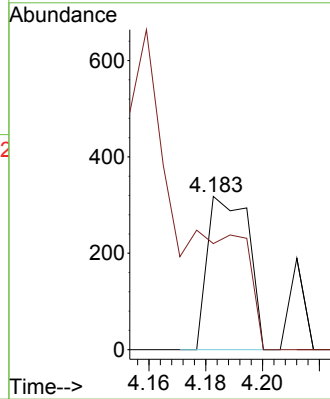
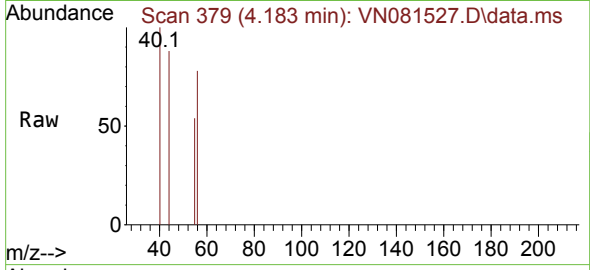




#13
 Acrolein
 Concen: 0.324 ug/l
 RT: 4.183 min Scan# 318
 Delta R.T. 0.006 min
 Lab File: VN081527.D
 Acq: 21 Mar 2024 18:11

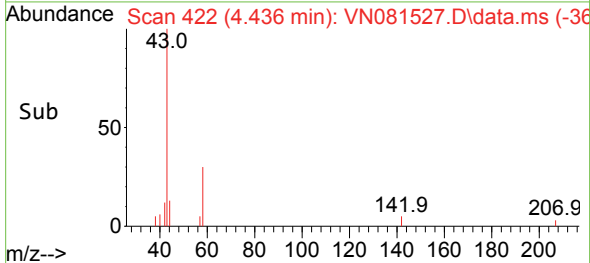
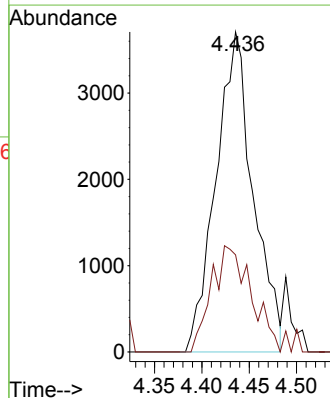
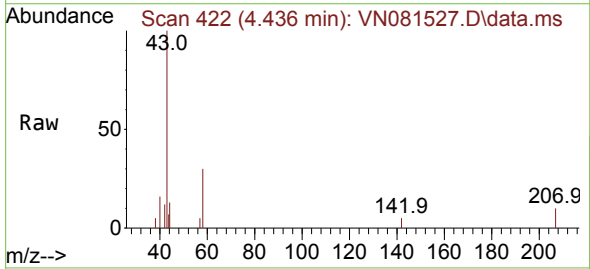
Instrument :
 MSVOA_N
 ClientSampleId :
 S-10

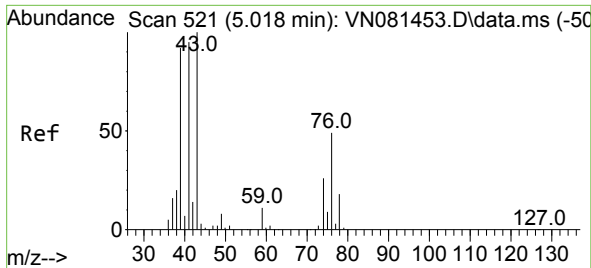
Tgt Ion: 56 Resp: 318
 Ion Ratio Lower Upper
 56 100
 55 0.0 55.3 82.9#



#16
 Acetone
 Concen: 4.998 ug/l
 RT: 4.436 min Scan# 422
 Delta R.T. 0.012 min
 Lab File: VN081527.D
 Acq: 21 Mar 2024 18:11

Tgt Ion: 43 Resp: 10148
 Ion Ratio Lower Upper
 43 100
 58 28.4 24.8 37.2

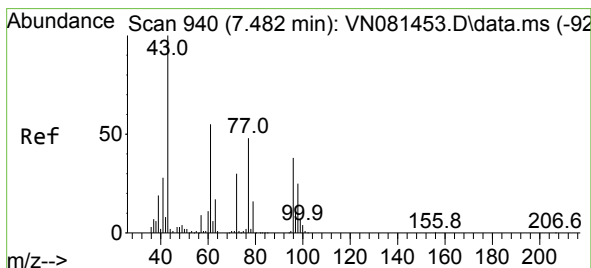
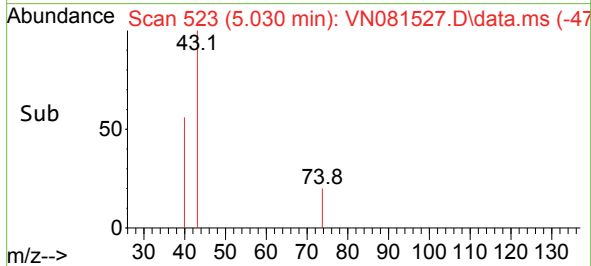
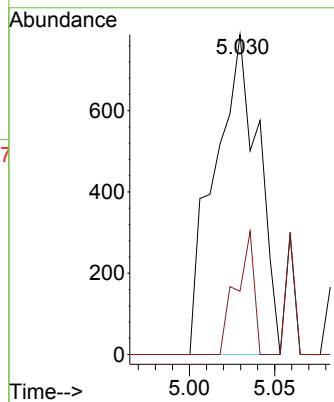
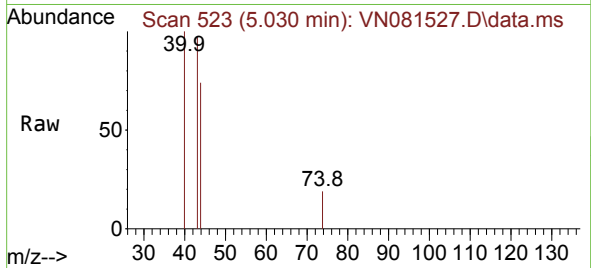




#18
 Methyl Acetate
 Concen: 0.225 ug/l
 RT: 5.030 min Scan# 51
 Delta R.T. 0.012 min
 Lab File: VN081527.D
 Acq: 21 Mar 2024 18:11

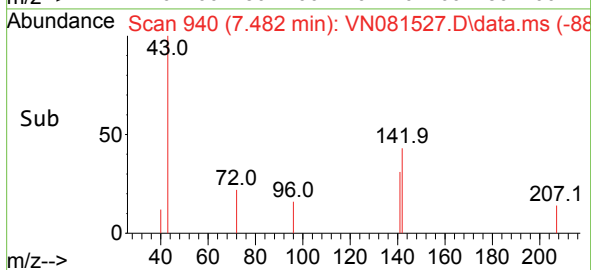
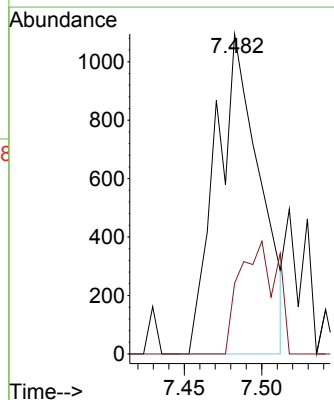
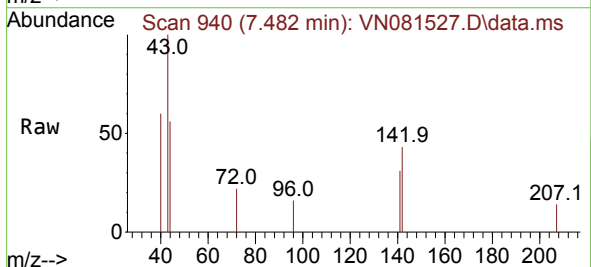
Instrument :
 MSVOA_N
 ClientSampleId :
 S-10

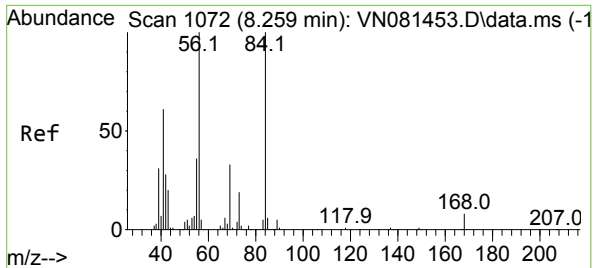
Tgt Ion: 43 Resp: 1407
 Ion Ratio Lower Upper
 43 100
 74 15.7 17.3 25.9#



#25
 2-Butanone
 Concen: 0.616 ug/l
 RT: 7.482 min Scan# 940
 Delta R.T. -0.000 min
 Lab File: VN081527.D
 Acq: 21 Mar 2024 18:11

Tgt Ion: 43 Resp: 2146
 Ion Ratio Lower Upper
 43 100
 72 22.1 19.5 29.3



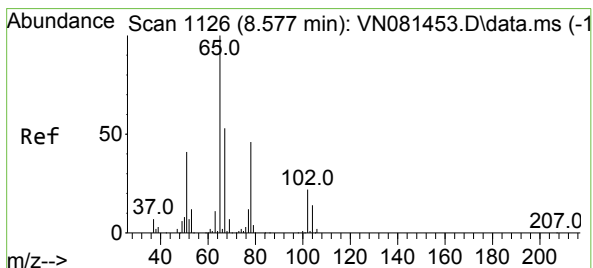
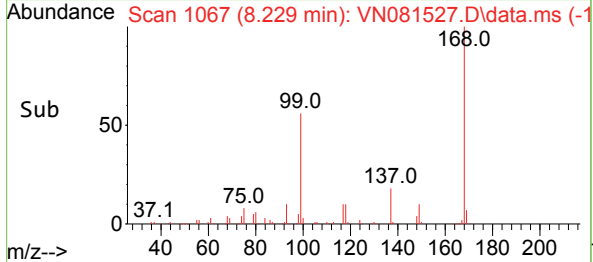
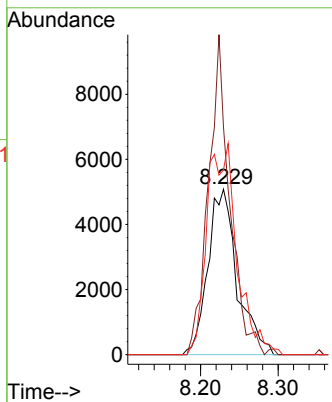
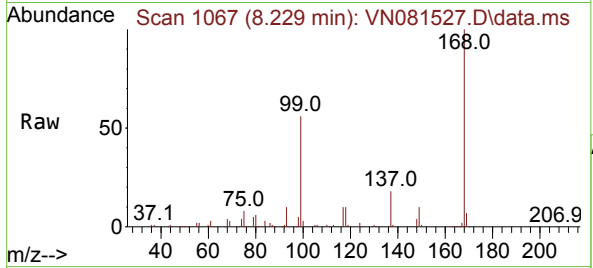


#31
 Cyclohexane
 Concen: 1.304 ug/l
 RT: 8.229 min Scan# 1072
 Delta R.T. -0.029 min
 Lab File: VN081527.D
 Acq: 21 Mar 2024 18:11

Instrument : MSVOA_N
 ClientSampleId : S-10

Tgt Ion: 56 Resp: 13327

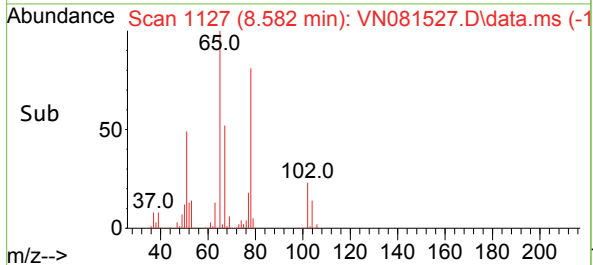
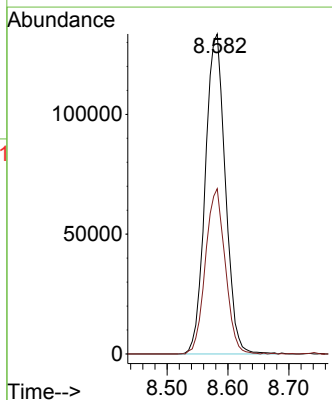
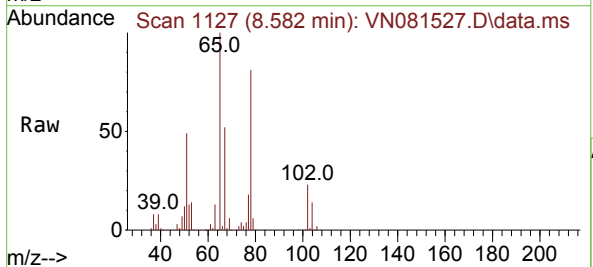
Ion	Ratio	Lower	Upper
56	100		
69	137.7	20.1	30.1#
84	111.7	56.9	85.3#

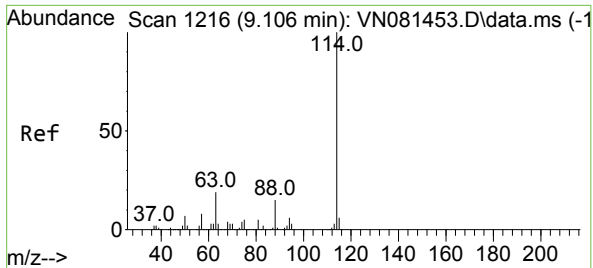


#33
 1,2-Dichloroethane-d4
 Concen: 48.666 ug/l
 RT: 8.582 min Scan# 1127
 Delta R.T. 0.006 min
 Lab File: VN081527.D
 Acq: 21 Mar 2024 18:11

Tgt Ion: 65 Resp: 305740

Ion	Ratio	Lower	Upper
65	100		
67	51.0	0.0	102.4

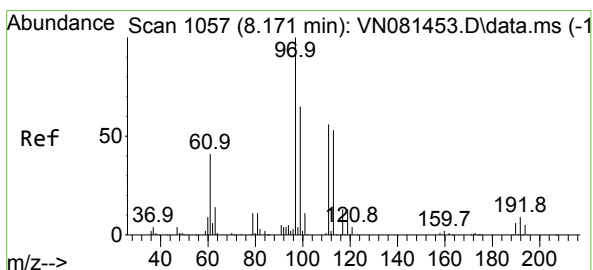
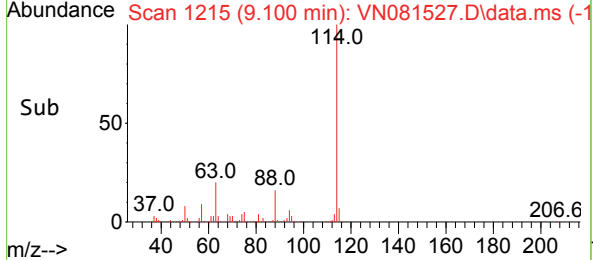
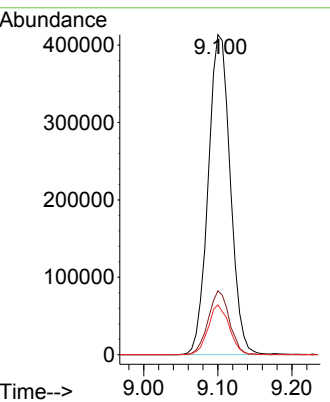
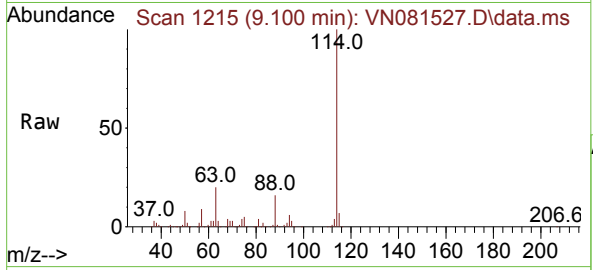




#34
 1,4-Difluorobenzene
 Concen: 50.000 ug/l
 RT: 9.100 min Scan# 11
 Delta R.T. -0.006 min
 Lab File: VN081527.D
 Acq: 21 Mar 2024 18:11

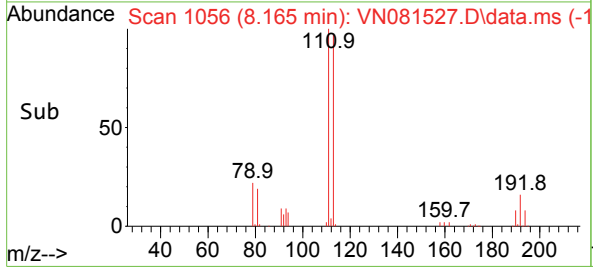
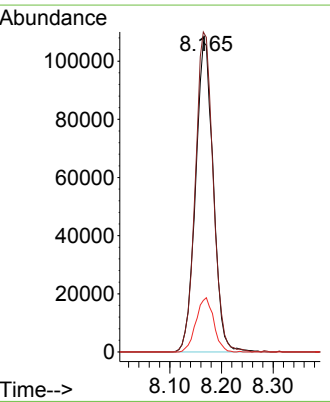
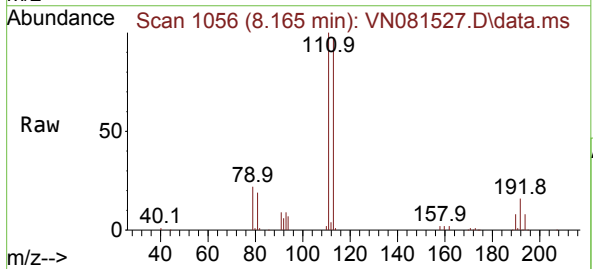
Instrument : MSVOA_N
 ClientSampleId : S-10

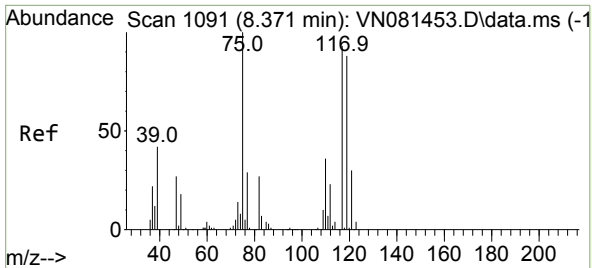
Tgt Ion	Resp	Lower	Upper
114	100		
63	19.9	0.0	48.0
88	15.6	0.0	34.8



#35
 Dibromofluoromethane
 Concen: 47.213 ug/l
 RT: 8.165 min Scan# 1056
 Delta R.T. -0.006 min
 Lab File: VN081527.D
 Acq: 21 Mar 2024 18:11

Tgt Ion	Resp	Lower	Upper
113	100		
111	103.2	82.2	123.4
192	17.4	12.5	18.7

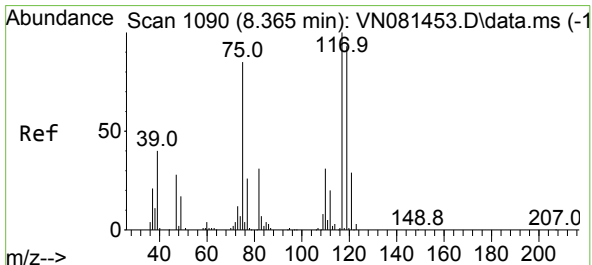
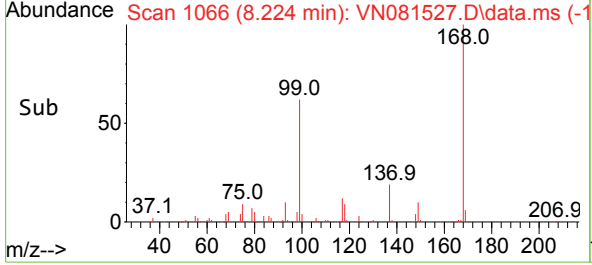
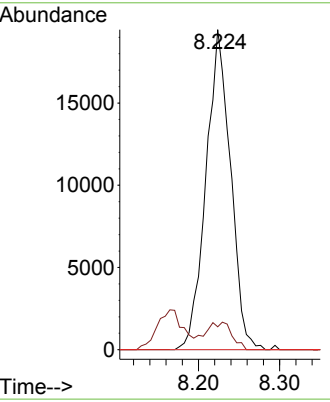
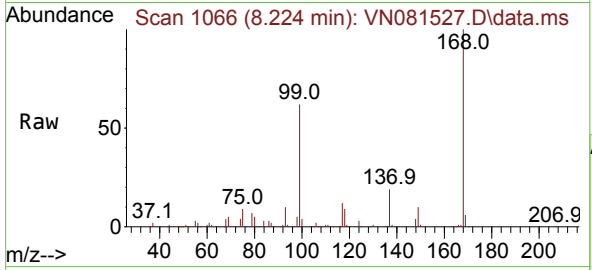




#36
 1,1-Dichloropropene
 Concen: 4.504 ug/l
 RT: 8.224 min Scan# 1066
 Delta R.T. -0.147 min
 Lab File: VN081527.D
 Acq: 21 Mar 2024 18:11

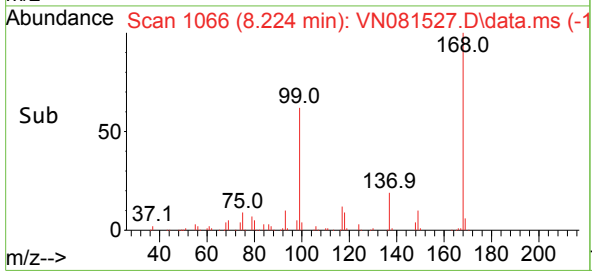
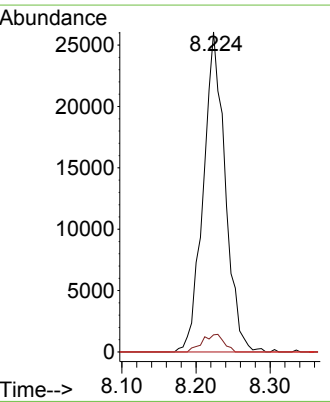
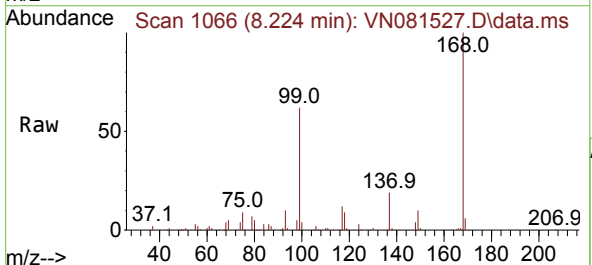
Instrument : MSVOA_N
 ClientSampleId : S-10

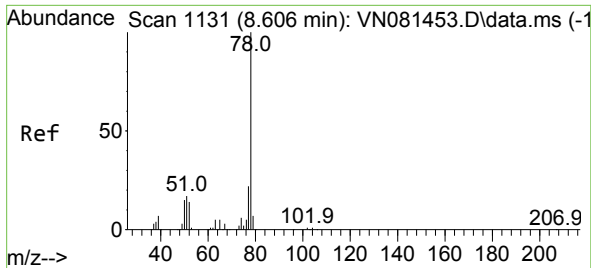
Tgt Ion:	Resp:	Lower	Upper
75	100		
110	7.9	16.0	48.0#
77	0.0	25.8	38.6#



#38
 Carbon Tetrachloride
 Concen: 5.384 ug/l
 RT: 8.224 min Scan# 1066
 Delta R.T. -0.141 min
 Lab File: VN081527.D
 Acq: 21 Mar 2024 18:11

Tgt Ion:	Resp:	Lower	Upper
117	100		
119	5.3	73.4	110.2#
121	0.0	24.4	36.6#

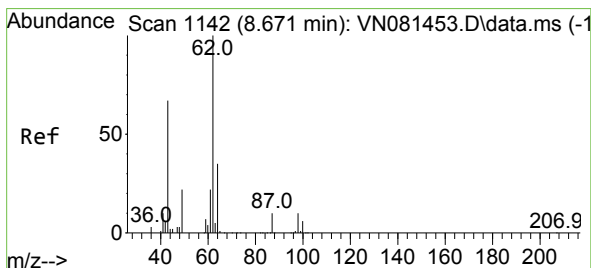
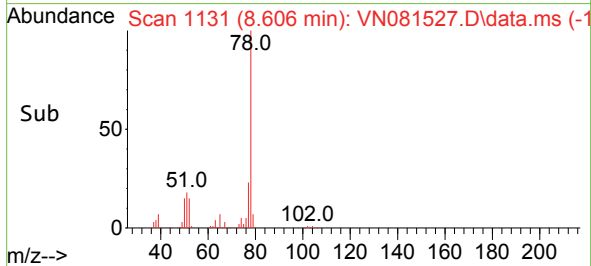
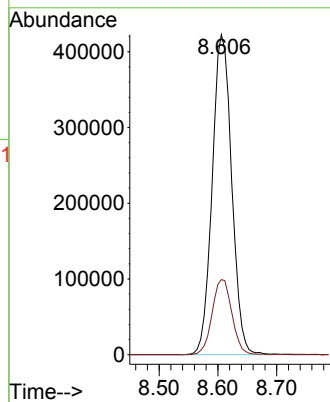
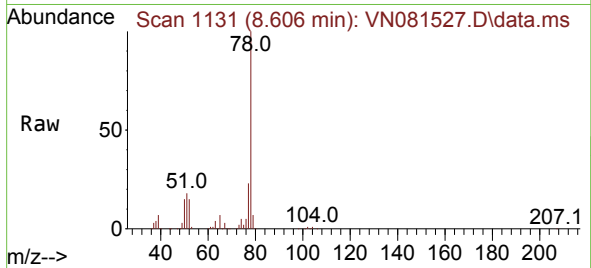




#40
Benzene
Concen: 36.654 ug/l
RT: 8.606 min Scan# 1131
Delta R.T. -0.000 min
Lab File: VN081527.D
Acq: 21 Mar 2024 18:11

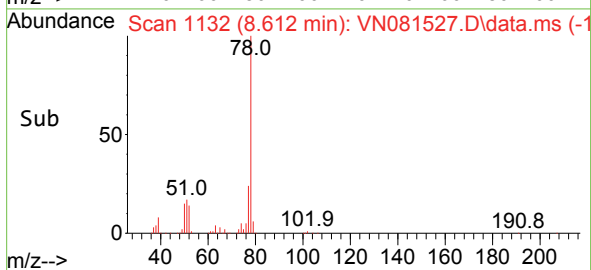
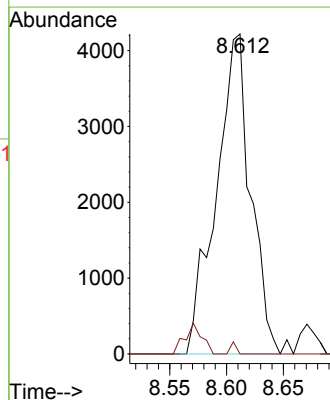
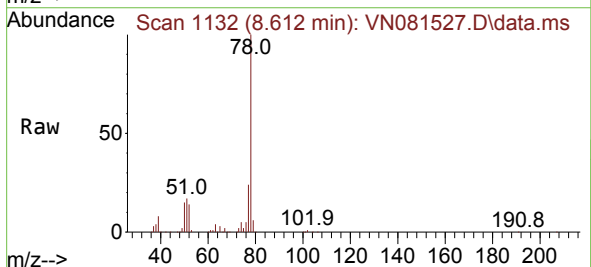
Instrument : MSVOA_N
ClientSampleId : S-10

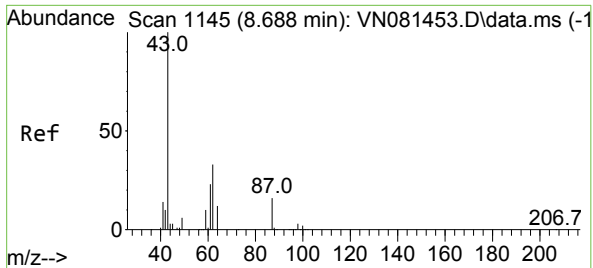
Tgt Ion: 78 Resp: 973244
Ion Ratio Lower Upper
78 100
77 23.5 20.4 30.6



#42
1,2-Dichloroethane
Concen: 0.951 ug/l
RT: 8.612 min Scan# 1132
Delta R.T. -0.059 min
Lab File: VN081527.D
Acq: 21 Mar 2024 18:11

Tgt Ion: 62 Resp: 8891
Ion Ratio Lower Upper
62 100
98 0.6 0.0 18.0

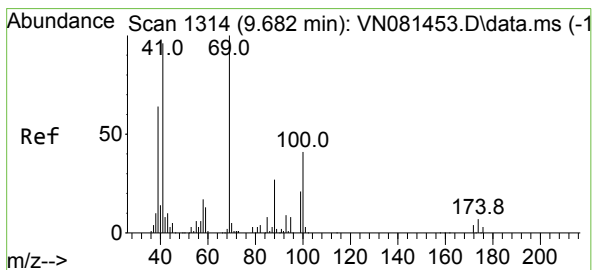
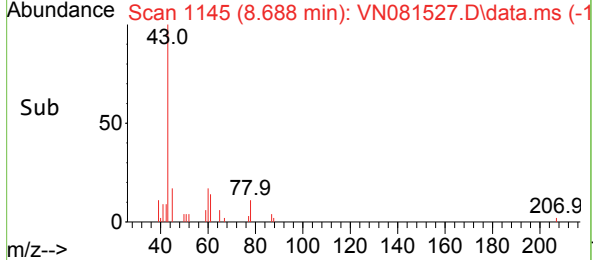
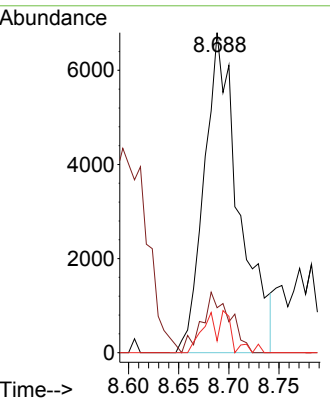
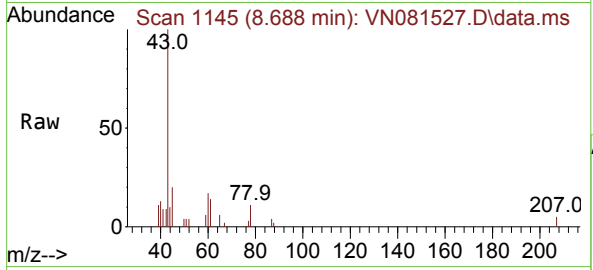




#43
 Isopropyl Acetate
 Concen: 1.274 ug/l
 RT: 8.688 min Scan# 1145
 Delta R.T. -0.000 min
 Lab File: VN081527.D
 Acq: 21 Mar 2024 18:11

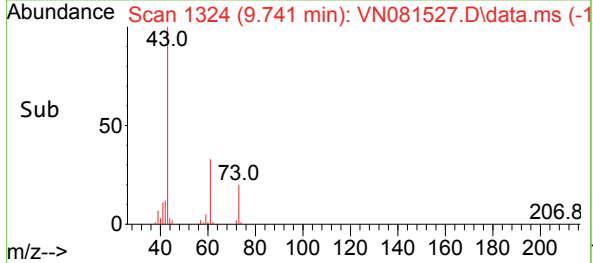
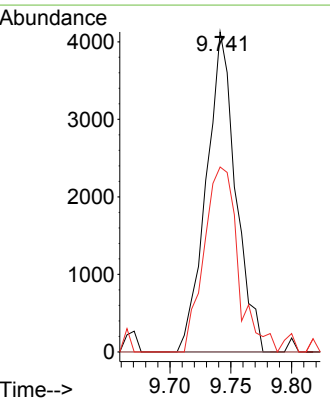
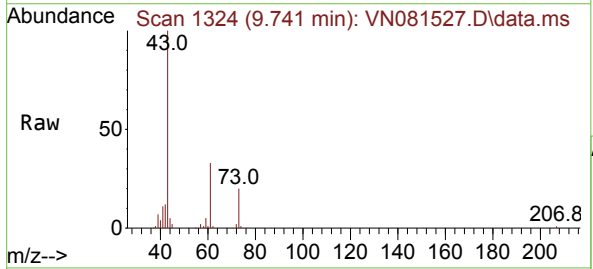
Instrument : MSVOA_N
 ClientSampleId : S-10

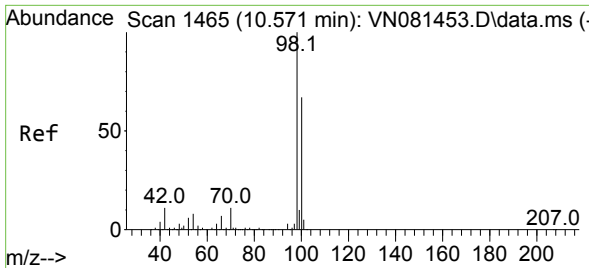
Tgt Ion	Resp	Lower	Upper
43	16425		
61	15.2	19.9	29.9#
87	5.0	9.0	13.6#



#48
 Methyl methacrylate
 Concen: 1.171 ug/l
 RT: 9.741 min Scan# 1324
 Delta R.T. 0.059 min
 Lab File: VN081527.D
 Acq: 21 Mar 2024 18:11

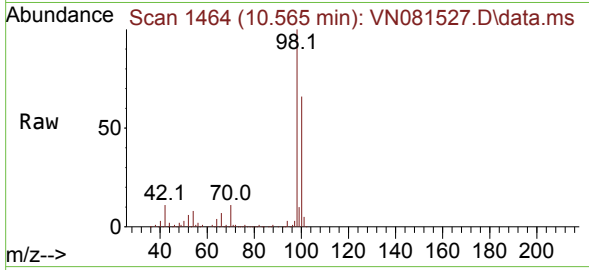
Tgt Ion	Resp	Lower	Upper
41	6964		
69	0.0	62.2	93.2#
39	66.5	47.6	71.4



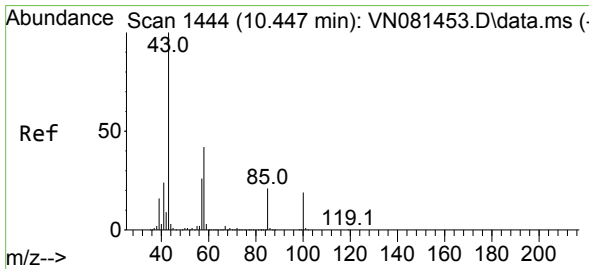
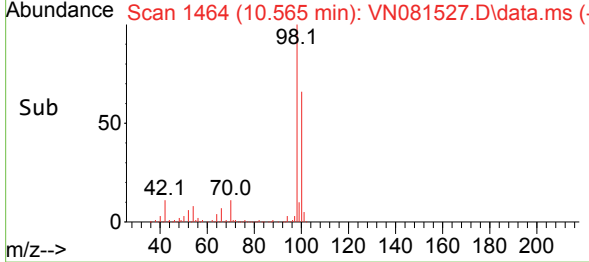
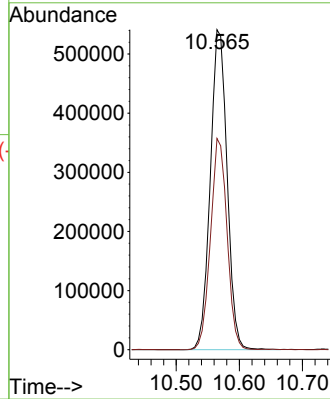


#50
 Toluene-d8
 Concen: 51.301 ug/l
 RT: 10.565 min Scan# 1464
 Delta R.T. -0.006 min
 Lab File: VN081527.D
 Acq: 21 Mar 2024 18:11

Instrument : MSVOA_N
 ClientSampleId : S-10

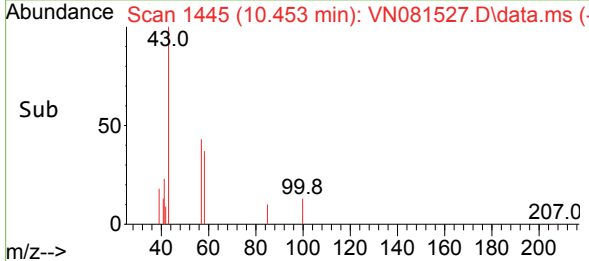
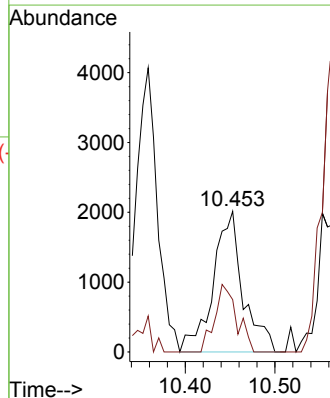
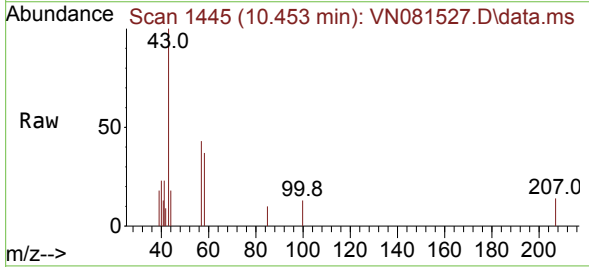


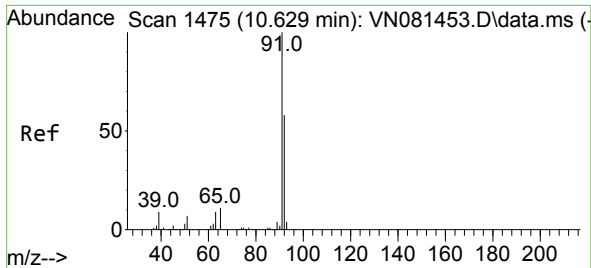
Tgt Ion: 98 Resp: 1000817
 Ion Ratio Lower Upper
 98 100
 100 64.9 51.4 77.0



#51
 4-Methyl-2-Pentanone
 Concen: 0.593 ug/l
 RT: 10.453 min Scan# 1445
 Delta R.T. 0.006 min
 Lab File: VN081527.D
 Acq: 21 Mar 2024 18:11

Tgt Ion: 43 Resp: 4666
 Ion Ratio Lower Upper
 43 100
 58 35.5 29.4 44.0

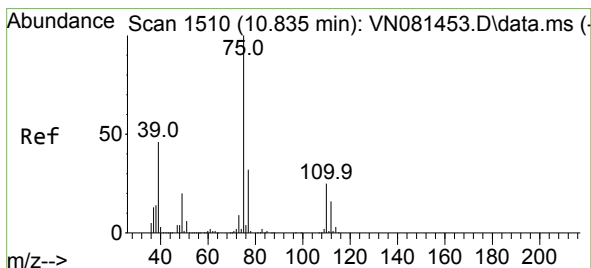
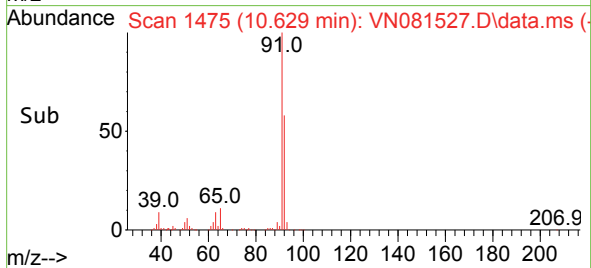
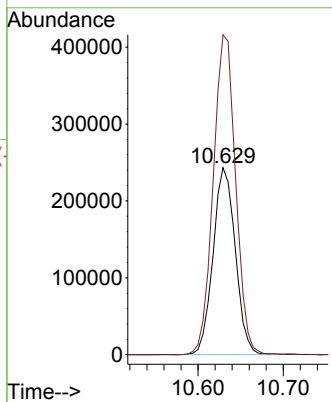
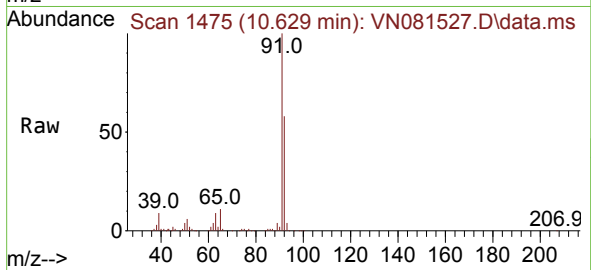




#52
 Toluene
 Concen: 26.129 ug/l
 RT: 10.629 min Scan# 1475
 Delta R.T. -0.000 min
 Lab File: VN081527.D
 Acq: 21 Mar 2024 18:11

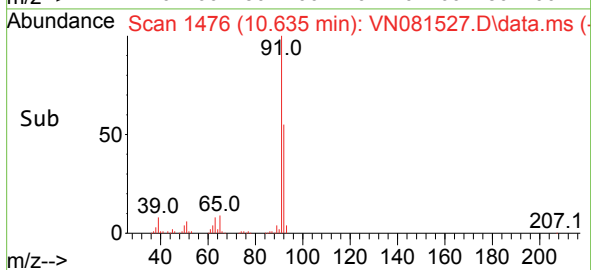
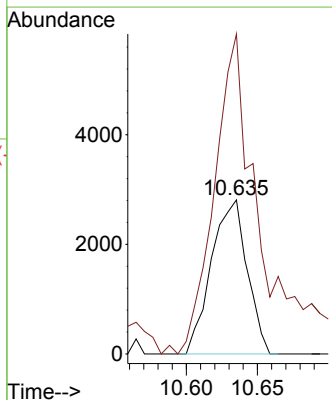
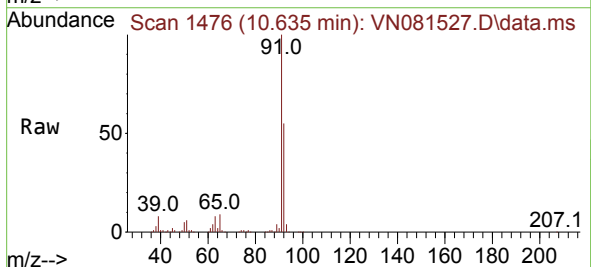
Instrument : MSVOA_N
 ClientSampleId : S-10

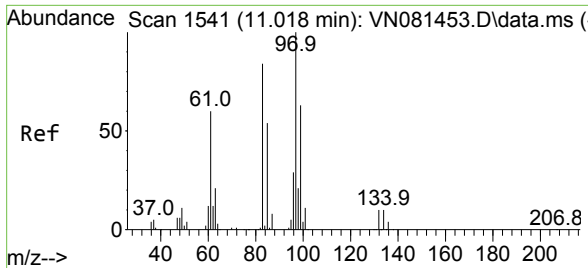
Tgt Ion: 92 Resp: 440973
 Ion Ratio Lower Upper
 92 100
 91 172.2 139.4 209.0



#53
 t-1,3-Dichloropropene
 Concen: 0.477 ug/l
 RT: 10.635 min Scan# 1476
 Delta R.T. -0.200 min
 Lab File: VN081527.D
 Acq: 21 Mar 2024 18:11

Tgt Ion: 75 Resp: 4921
 Ion Ratio Lower Upper
 75 100
 77 207.7 25.5 38.3#

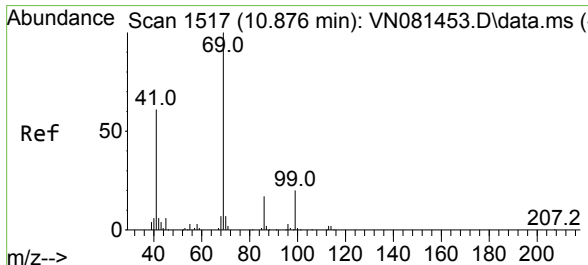
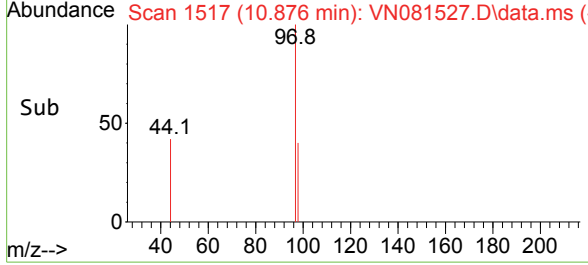
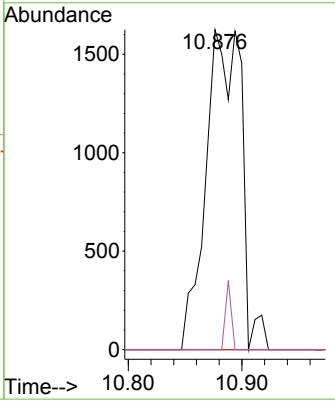
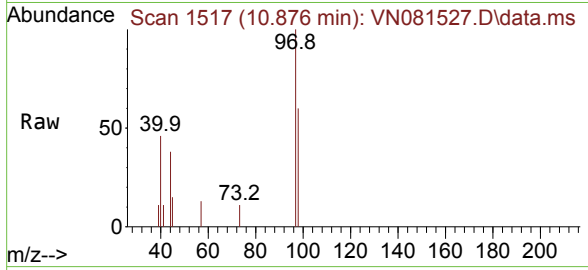




#55
 1,1,2-Trichloroethane
 Concen: 0.520 ug/l
 RT: 10.876 min Scan# 11
 Delta R.T. -0.141 min
 Lab File: VN081527.D
 Acq: 21 Mar 2024 18:11

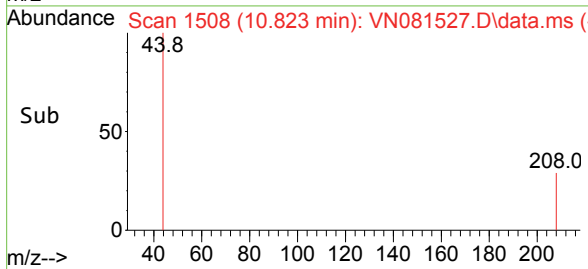
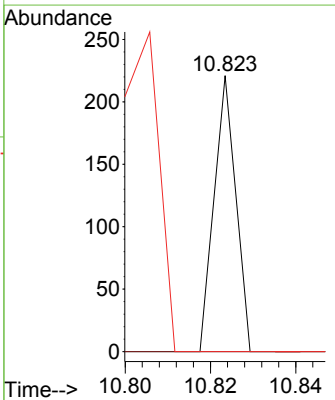
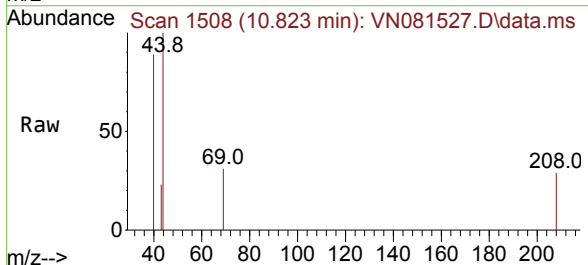
Instrument : MSVOA_N
 ClientSampleId : S-10

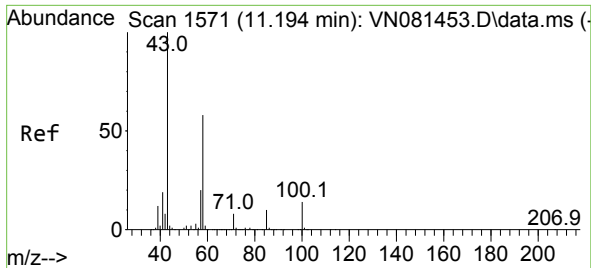
Tgt Ion	Resp	Lower	Upper
97	3535		
97	100		
83	0.0	72.9	109.3#
85	0.0	50.2	75.2#
99	0.0	49.6	74.4#



#56
 Ethyl methacrylate
 Concen: 0.579 ug/l
 RT: 10.823 min Scan# 1508
 Delta R.T. -0.053 min
 Lab File: VN081527.D
 Acq: 21 Mar 2024 18:11

Tgt Ion	Resp	Lower	Upper
69	78		
69	100		
41	0.0	61.0	91.6#
39	0.0	31.8	47.6#

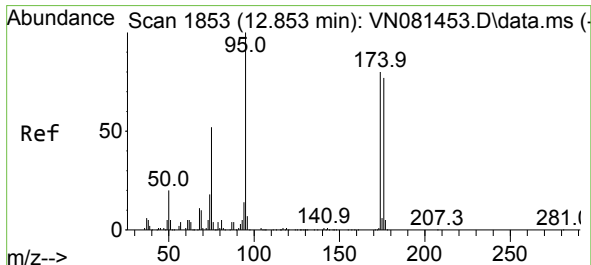
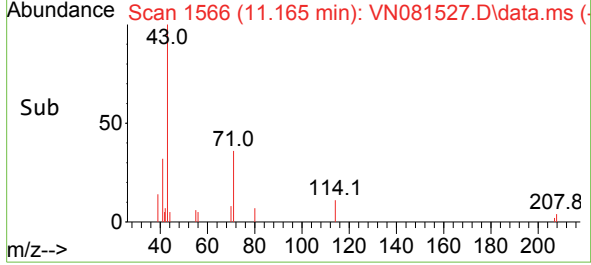
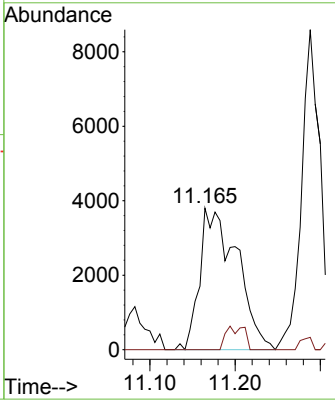
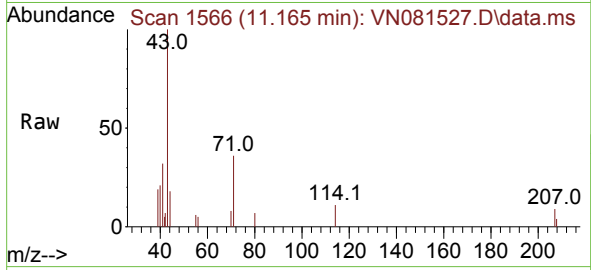




#59
 2-Hexanone
 Concen: 1.986 ug/l
 RT: 11.165 min Scan# 111
 Delta R.T. -0.029 min
 Lab File: VN081527.D
 Acq: 21 Mar 2024 18:11

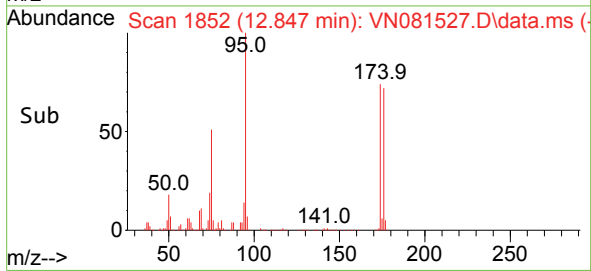
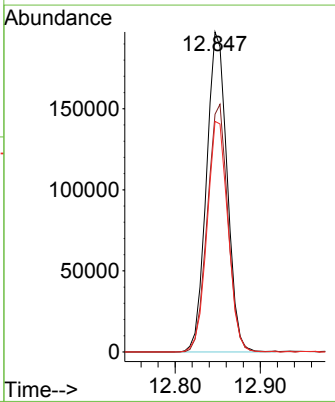
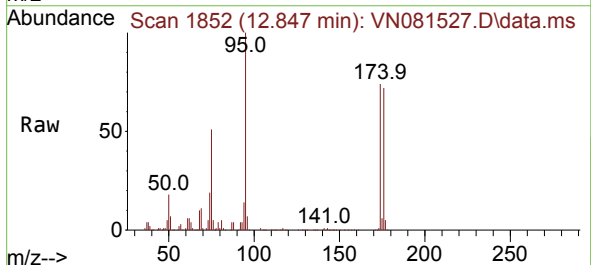
Instrument : MSVOA_N
 ClientSampleId : S-10

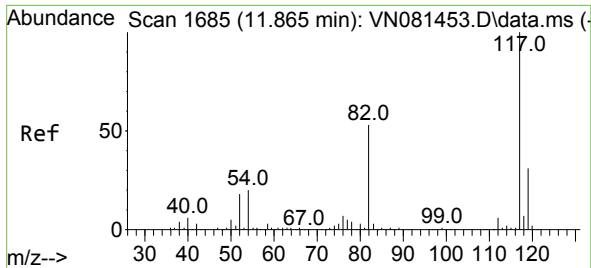
Tgt Ion	Resp	Ion Ratio	Lower	Upper
43	11551	100		
58		0.0	25.9	77.8#



#62
 4-Bromofluorobenzene
 Concen: 48.254 ug/l
 RT: 12.847 min Scan# 1852
 Delta R.T. -0.006 min
 Lab File: VN081527.D
 Acq: 21 Mar 2024 18:11

Tgt Ion	Resp	Ion Ratio	Lower	Upper
95	331704	100		
174		77.3	0.0	120.4
176		72.9	0.0	121.0

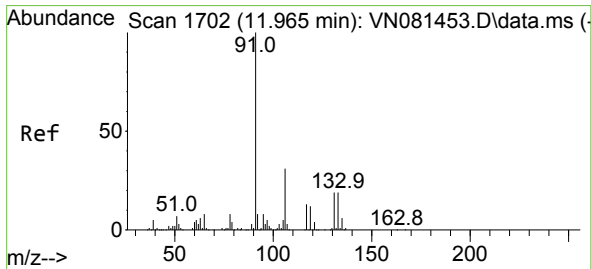
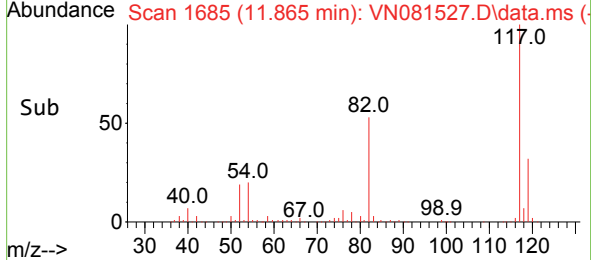
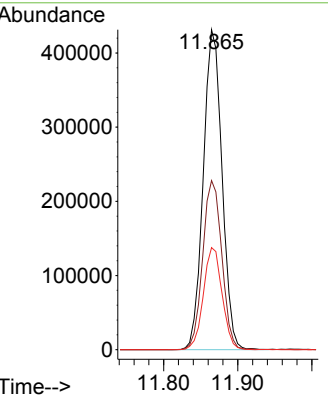
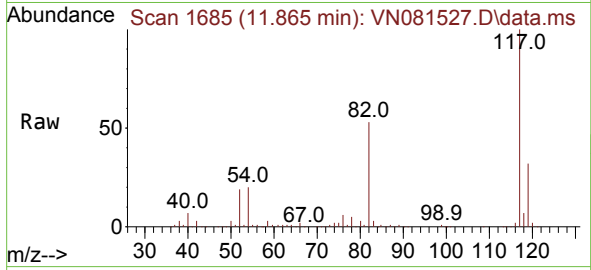




#63
 Chlorobenzene-d5
 Concen: 50.000 ug/l
 RT: 11.865 min Scan# 1170
 Delta R.T. -0.000 min
 Lab File: VN081527.D
 Acq: 21 Mar 2024 18:11

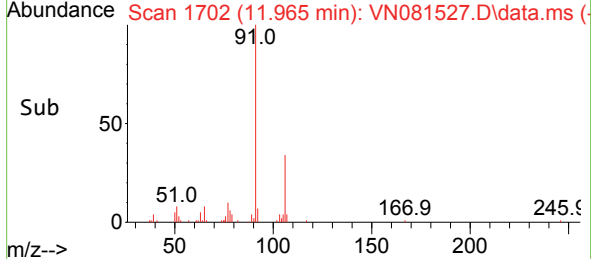
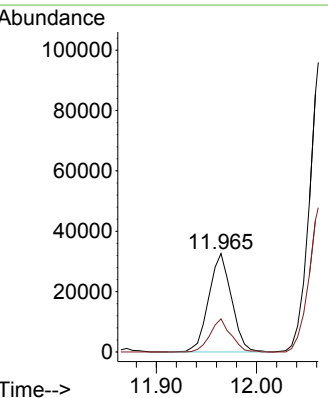
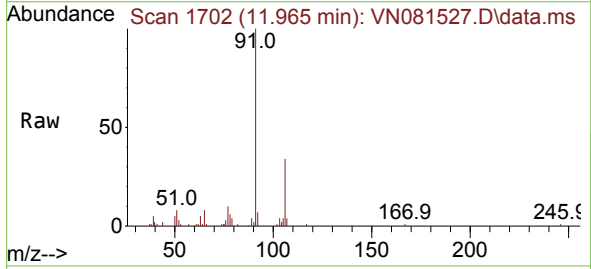
Instrument : MSVOA_N
 ClientSampleId : S-10

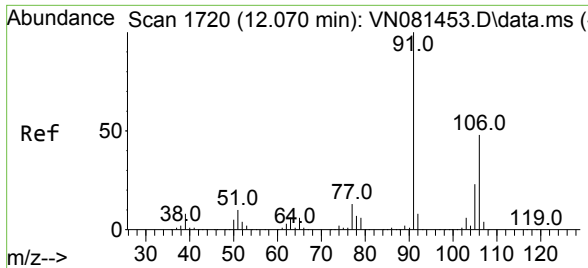
Tgt Ion	Resp	Lower	Upper
117	758335		
82	52.9	52.7	79.1
119	31.9	25.3	37.9



#67
 Ethyl Benzene
 Concen: 1.650 ug/l
 RT: 11.965 min Scan# 1702
 Delta R.T. -0.000 min
 Lab File: VN081527.D
 Acq: 21 Mar 2024 18:11

Tgt Ion	Resp	Lower	Upper
91	51375		
106	33.7	23.8	35.6

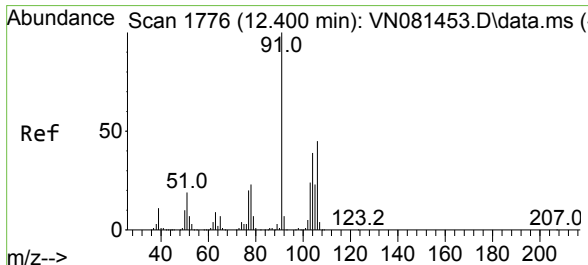
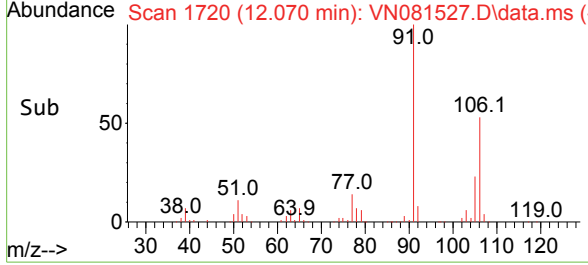
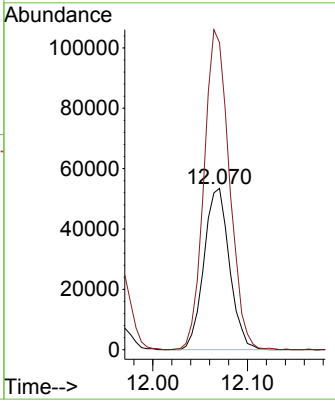
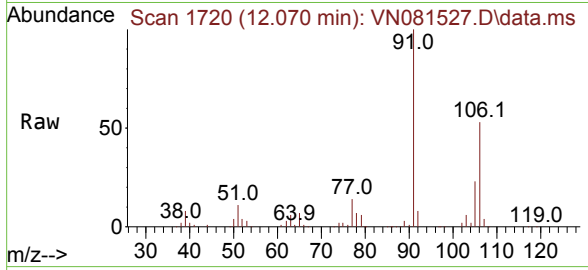




#68
 m/p-Xylenes
 Concen: 8.569 ug/l
 RT: 12.070 min Scan# 11
 Delta R.T. -0.000 min
 Lab File: VN081527.D
 Acq: 21 Mar 2024 18:11

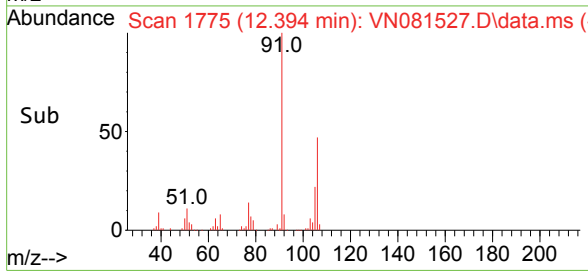
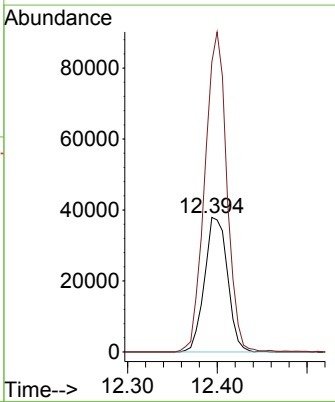
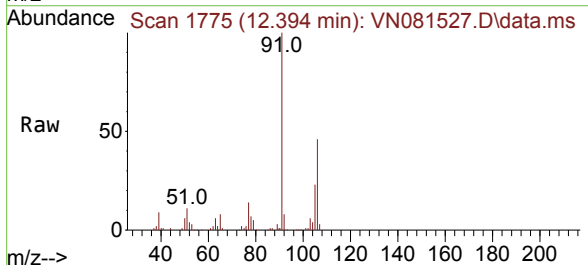
Instrument : MSVOA_N
 ClientSampleId : S-10

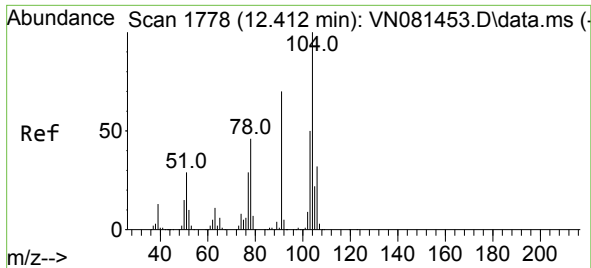
Tgt Ion:106 Resp: 100037
 Ion Ratio Lower Upper
 106 100
 91 197.6 169.0 253.6



#69
 o-Xylene
 Concen: 5.894 ug/l
 RT: 12.394 min Scan# 1775
 Delta R.T. -0.006 min
 Lab File: VN081527.D
 Acq: 21 Mar 2024 18:11

Tgt Ion:106 Resp: 67551
 Ion Ratio Lower Upper
 106 100
 91 227.4 112.1 336.3

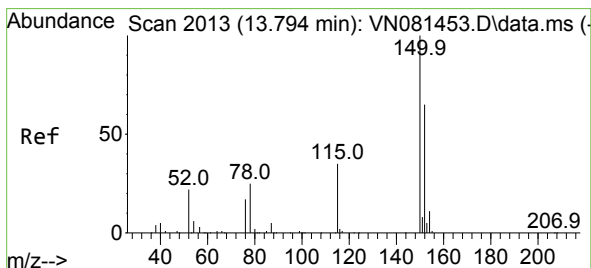
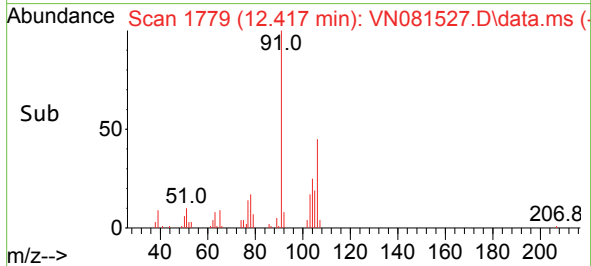
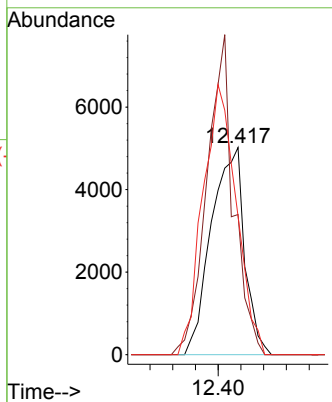
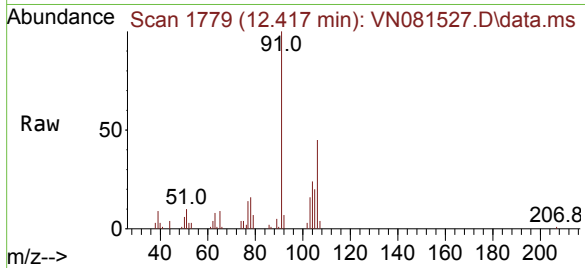




#70
 Styrene
 Concen: 0.551 ug/l
 RT: 12.417 min Scan# 11
 Delta R.T. 0.006 min
 Lab File: VN081527.D
 Acq: 21 Mar 2024 18:11

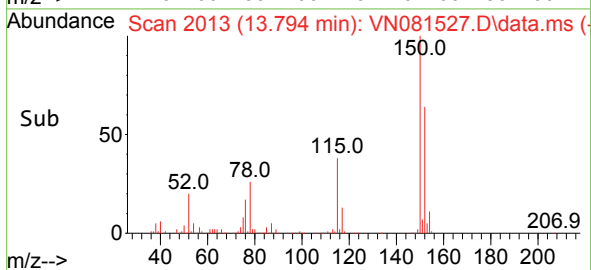
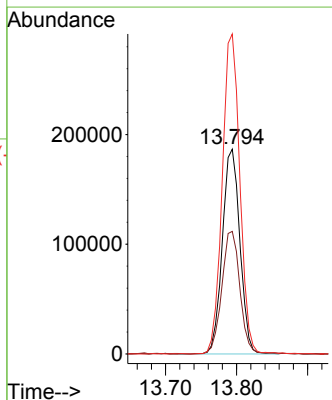
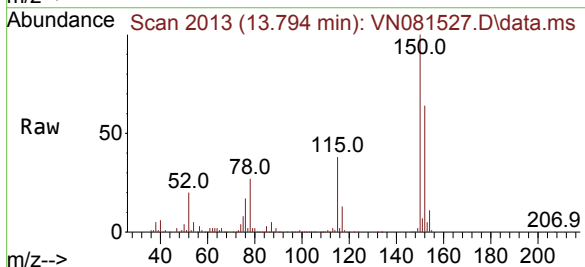
Instrument :
 MSVOA_N
 ClientSampleId :
 S-10

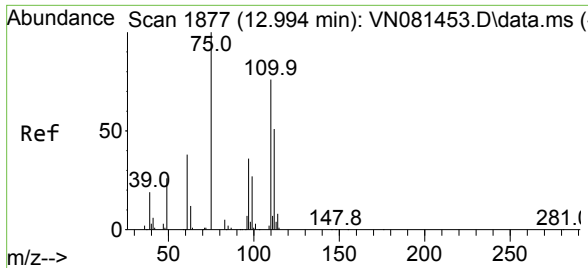
Tgt Ion:104 Resp: 10180
 Ion Ratio Lower Upper
 104 100
 78 125.2 43.8 65.8#
 103 131.5 44.2 66.2#



#72
 1,4-Dichlorobenzene-d4
 Concen: 50.000 ug/l
 RT: 13.794 min Scan# 2013
 Delta R.T. -0.000 min
 Lab File: VN081527.D
 Acq: 21 Mar 2024 18:11

Tgt Ion:152 Resp: 319545
 Ion Ratio Lower Upper
 152 100
 115 62.0 32.3 96.8
 150 156.5 0.0 339.8

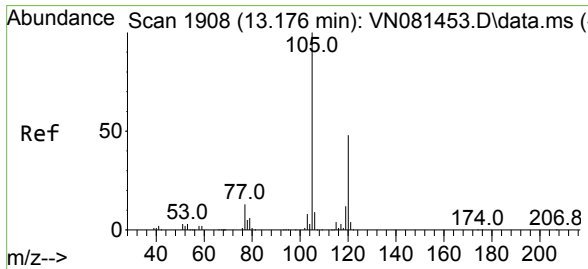
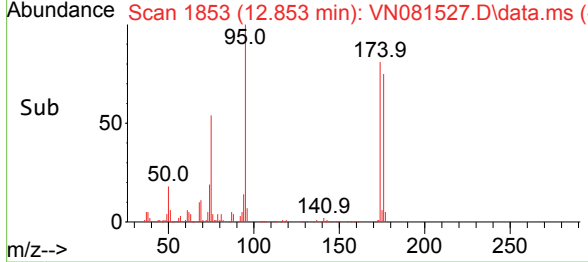
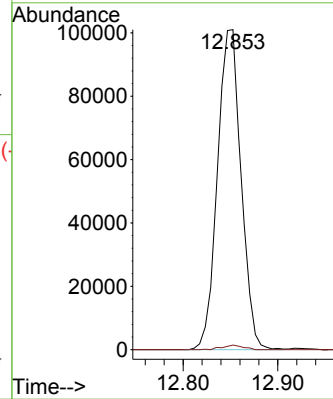
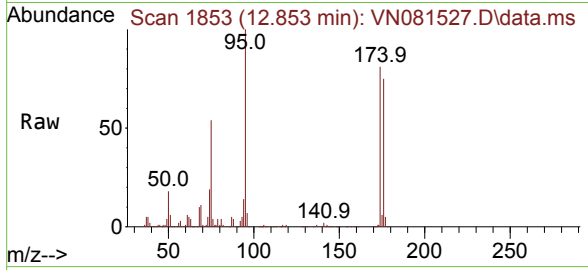




#76
 1,2,3-Trichloropropane
 Concen: 22.959 ug/l
 RT: 12.853 min Scan# 1877
 Delta R.T. -0.141 min
 Lab File: VN081527.D
 Acq: 21 Mar 2024 18:11

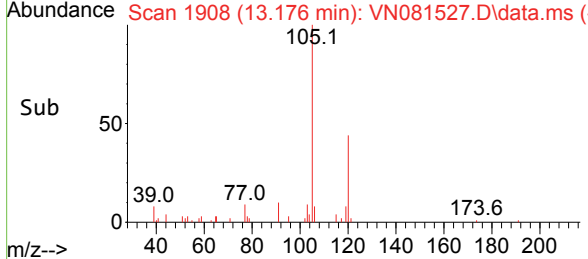
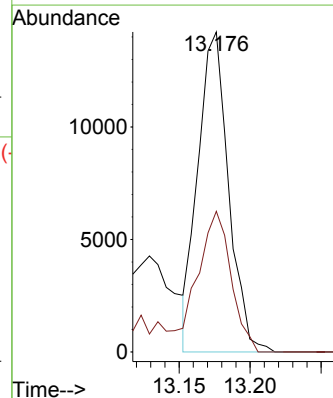
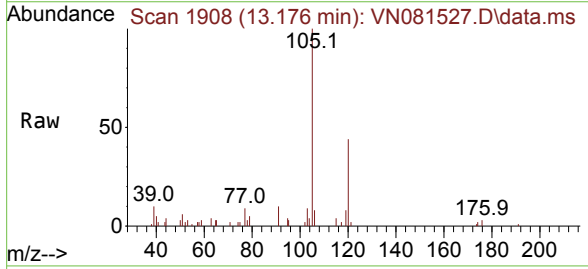
Instrument : MSVOA_N
 ClientSampleId : S-10

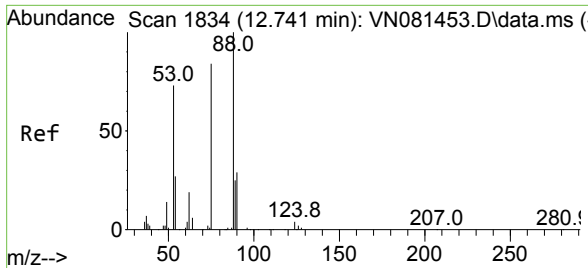
Tgt Ion: 75 Resp: 175494
 Ion Ratio Lower Upper
 75 100
 77 1.3 91.0 272.8#



#80
 1,3,5-Trimethylbenzene
 Concen: 0.945 ug/l
 RT: 13.176 min Scan# 1908
 Delta R.T. -0.000 min
 Lab File: VN081527.D
 Acq: 21 Mar 2024 18:11

Tgt Ion:105 Resp: 21264
 Ion Ratio Lower Upper
 105 100
 120 49.5 23.0 69.0



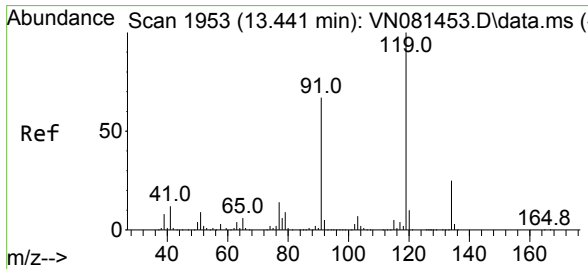
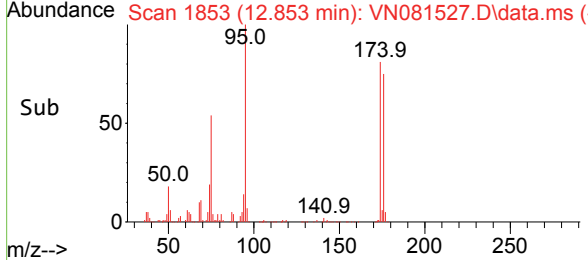
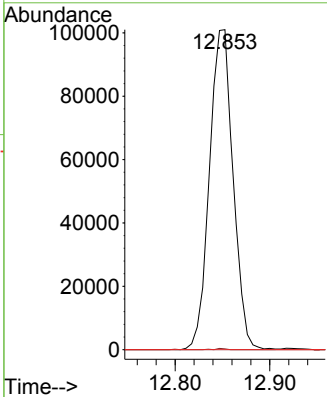
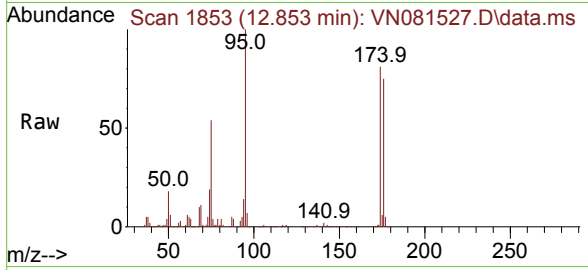


#81
 trans-1,4-Dichloro-2-butene
 Concen: 62.044 ug/l
 RT: 12.853 min Scan# 11
 Delta R.T. 0.112 min
 Lab File: VN081527.D
 Acq: 21 Mar 2024 18:11

Instrument : MSVOA_N
 ClientSampleId : S-10

Tgt Ion: 75 Resp: 175494

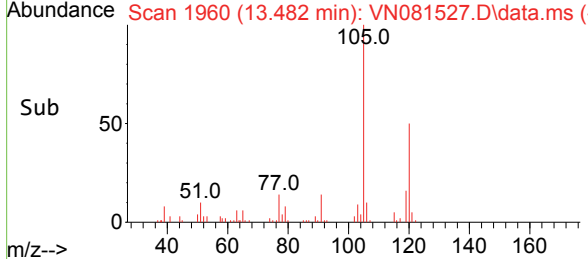
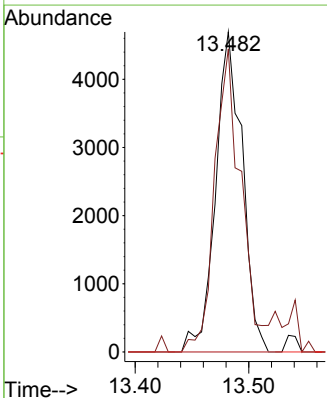
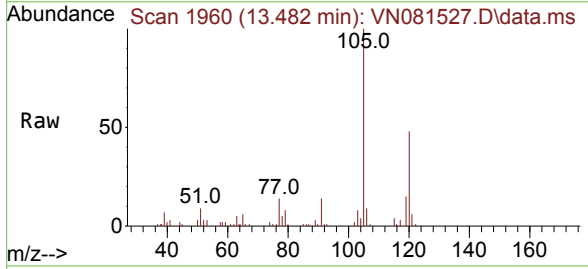
Ion	Ratio	Lower	Upper
75	100		
53	0.2	71.4	107.2#
89	0.0	33.4	50.0#

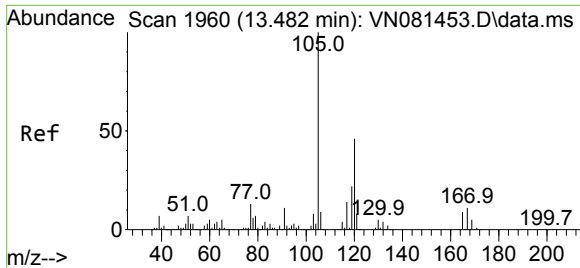


#83
 tert-Butylbenzene
 Concen: 0.394 ug/l
 RT: 13.482 min Scan# 1960
 Delta R.T. 0.041 min
 Lab File: VN081527.D
 Acq: 21 Mar 2024 18:11

Tgt Ion: 119 Resp: 7650

Ion	Ratio	Lower	Upper
119	100		
91	93.0	36.8	110.4
134	0.0	12.4	37.4#

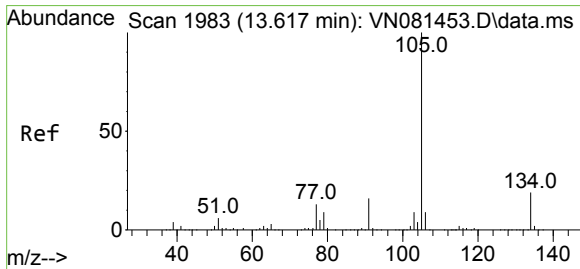
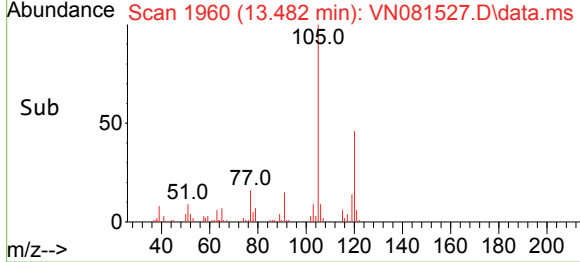
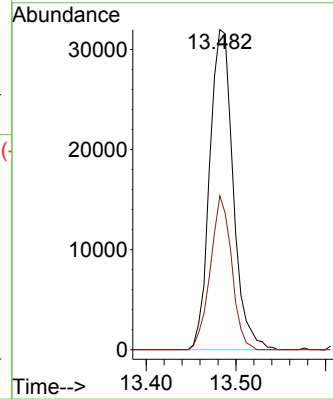
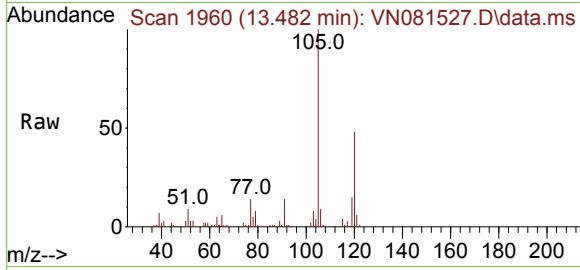




#84
 1,2,4-Trimethylbenzene
 Concen: 2.568 ug/l
 RT: 13.482 min Scan# 1960
 Delta R.T. -0.000 min
 Lab File: VN081527.D
 Acq: 21 Mar 2024 18:11

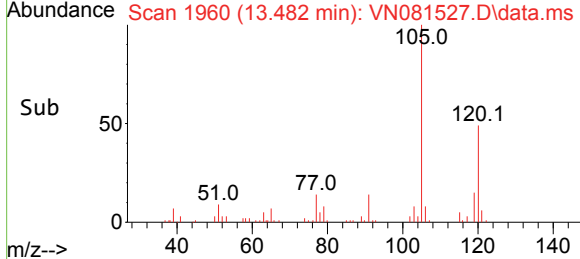
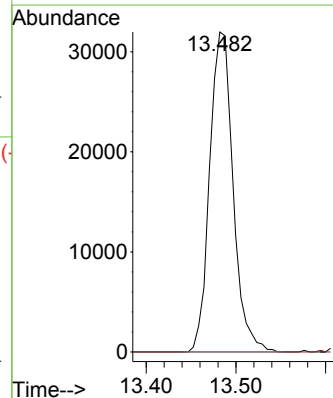
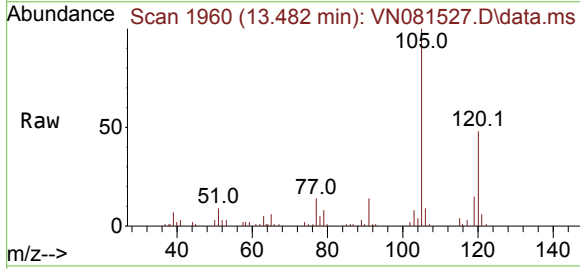
Instrument : MSVOA_N
 ClientSampleId : S-10

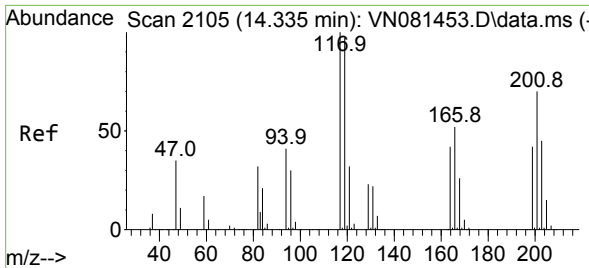
Tgt Ion:105 Resp: 58073
 Ion Ratio Lower Upper
 105 100
 120 43.6 20.9 62.7



#85
 sec-Butylbenzene
 Concen: 2.094 ug/l
 RT: 13.482 min Scan# 1960
 Delta R.T. -0.135 min
 Lab File: VN081527.D
 Acq: 21 Mar 2024 18:11

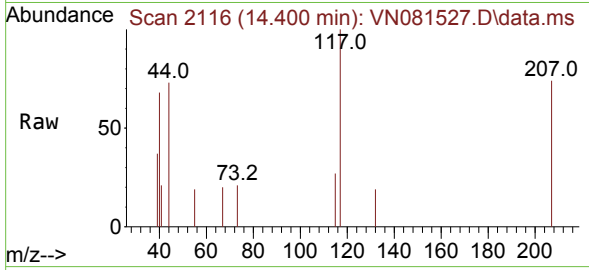
Tgt Ion:105 Resp: 58073
 Ion Ratio Lower Upper
 105 100
 134 0.0 8.6 25.8#



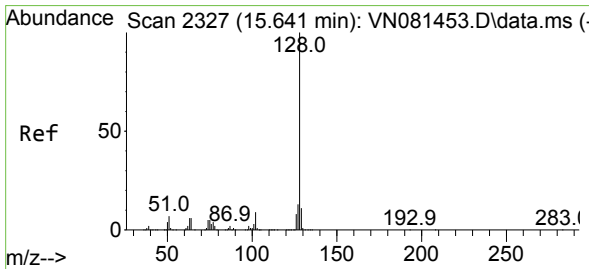
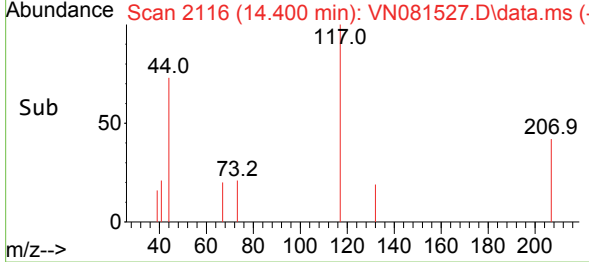
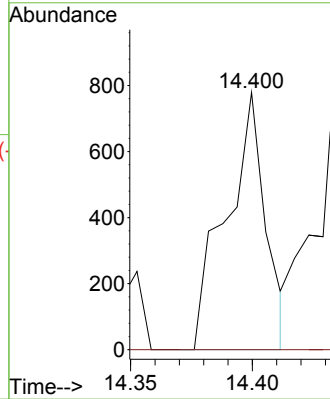


#90
 Hexachloroethane
 Concen: 0.204 ug/l
 RT: 14.400 min Scan# 2116
 Delta R.T. 0.065 min
 Lab File: VN081527.D
 Acq: 21 Mar 2024 18:11

Instrument : MSVOA_N
 ClientSampleId : S-10



Tgt Ion:117 Resp: 877
 Ion Ratio Lower Upper
 117 100
 201 0.0 30.0 90.0#



#95
 Naphthalene
 Concen: 34.520 ug/l
 RT: 15.641 min Scan# 2327
 Delta R.T. -0.000 min
 Lab File: VN081527.D
 Acq: 21 Mar 2024 18:11

Tgt Ion:128 Resp: 769570
 Ion Ratio Lower Upper
 128 100
 127 12.9 10.0 15.0
 129 10.8 8.7 13.1

