

Data Path : Z:\voasrv\HPCHEM1\MSVOA\_N\Data\VN032125\  
 Data File : VN086061.D  
 Acq On : 21 Mar 2025 23:43  
 Operator : JC\MD  
 Sample : Q1609-01  
 Misc : 5.0mL/MSVOA\_N/WATER  
 ALS Vial : 28 Sample Multiplier: 1

Instrument :  
 MSVOA\_N  
 ClientSampleId :  
 WC-SCRN-01-G

Quant Time: Mar 22 00:00:56 2025  
 Quant Method : Z:\voasrv\HPCHEM1\MSVOA\_N\methods\82N031825W.M  
 Quant Title : SW846 8260  
 QLast Update : Wed Mar 19 03:20:56 2025  
 Response via : Initial Calibration

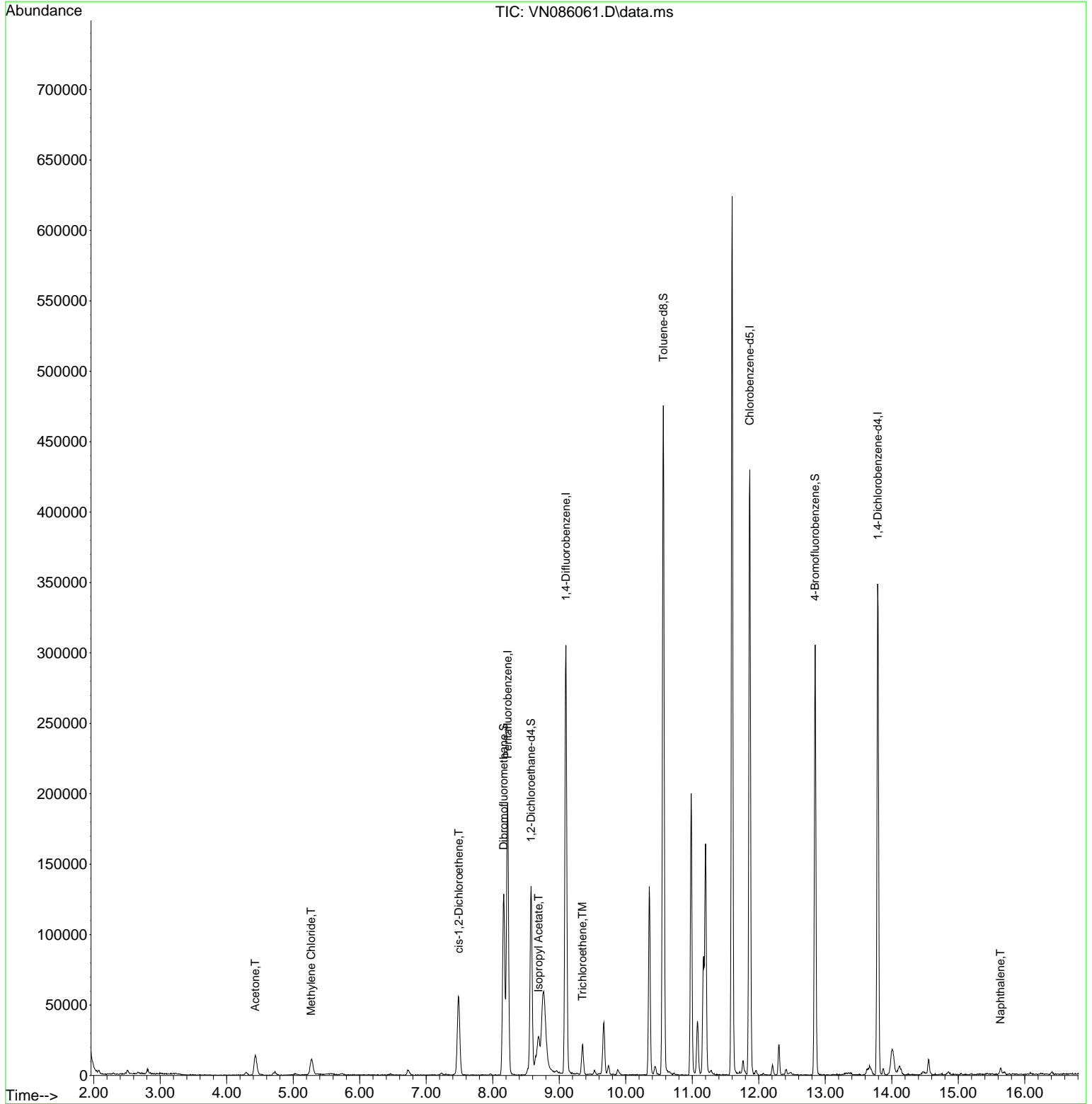
Compound	R.T.	QIon	Response	Conc	Units	Dev(Min)
-----						
Internal Standards						
1) Pentafluorobenzene	8.224	168	140609	50.000	ug/l	0.00
34) 1,4-Difluorobenzene	9.100	114	262572	50.000	ug/l	0.00
63) Chlorobenzene-d5	11.865	117	254973	50.000	ug/l	0.00
72) 1,4-Dichlorobenzene-d4	13.788	152	98590	50.000	ug/l	0.00
System Monitoring Compounds						
33) 1,2-Dichloroethane-d4	8.577	65	110762	57.526	ug/l	0.00
Spiked Amount	50.000	Range	74 - 125	Recovery	=	115.060%
35) Dibromofluoromethane	8.165	113	93335	50.927	ug/l	0.00
Spiked Amount	50.000	Range	75 - 124	Recovery	=	101.860%
50) Toluene-d8	10.565	98	337987	50.814	ug/l	0.00
Spiked Amount	50.000	Range	86 - 113	Recovery	=	101.620%
62) 4-Bromofluorobenzene	12.847	95	101958	42.982	ug/l	0.00
Spiked Amount	50.000	Range	77 - 121	Recovery	=	85.960%
Target Compounds						
						Qvalue
16) Acetone	4.430	43	27174	46.196	ug/l	98
20) Methylene Chloride	5.271	84	9766	5.675	ug/l #	95
27) cis-1,2-Dichloroethene	7.489	96	33966	18.986	ug/l	91
43) Isopropyl Acetate	8.688	43	35240	7.988	ug/l #	68
44) Trichloroethene	9.347	130	8180	4.166	ug/l	99
95) Naphthalene	15.635	128	5135	1.048	ug/l #	94
-----						

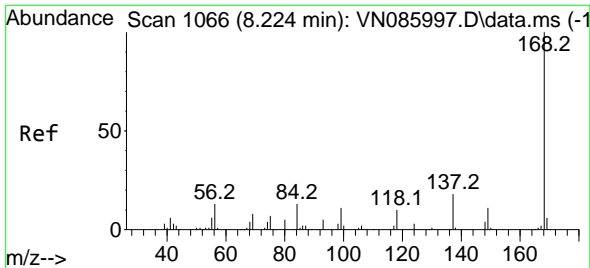
(#) = qualifier out of range (m) = manual integration (+) = signals summed

Data Path : Z:\voasrv\HPCHEM1\MSVOA\_N\Data\VN032125\  
 Data File : VN086061.D  
 Acq On : 21 Mar 2025 23:43  
 Operator : JC\MD  
 Sample : Q1609-01  
 Misc : 5.0mL/MSVOA\_N/WATER  
 ALS Vial : 28 Sample Multiplier: 1

Instrument :  
 MSVOA\_N  
 ClientSampleId :  
 WC-SCRN-01-G

Quant Time: Mar 22 00:00:56 2025  
 Quant Method : Z:\voasrv\HPCHEM1\MSVOA\_N\methods\82N031825W.M  
 Quant Title : SW846 8260  
 QLast Update : Wed Mar 19 03:20:56 2025  
 Response via : Initial Calibration

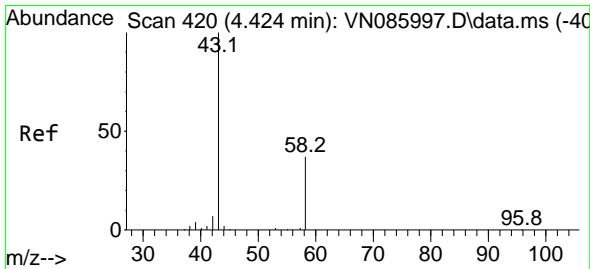
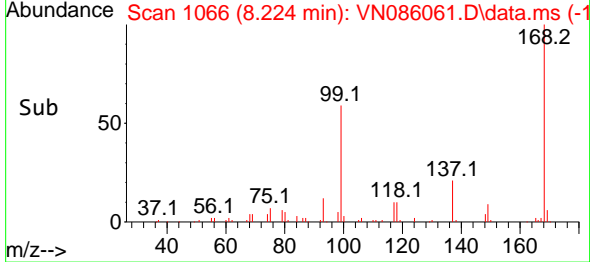
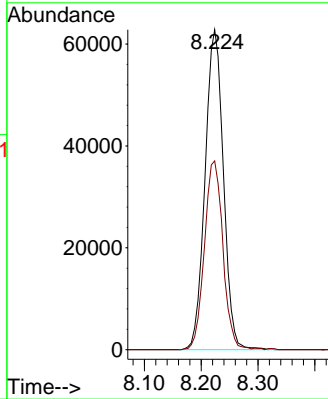
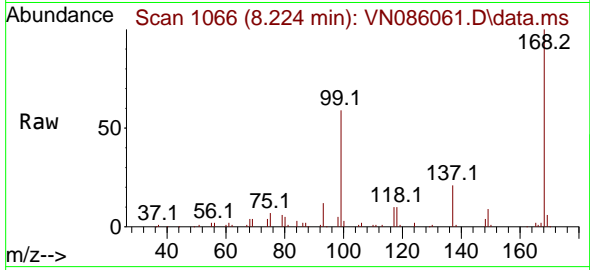




#1  
 Pentafluorobenzene  
 Concen: 50.000 ug/l  
 RT: 8.224 min Scan# 1066  
 Delta R.T. -0.000 min  
 Lab File: VN086061.D  
 Acq: 21 Mar 2025 23:43

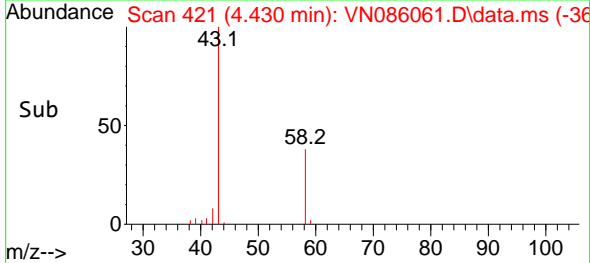
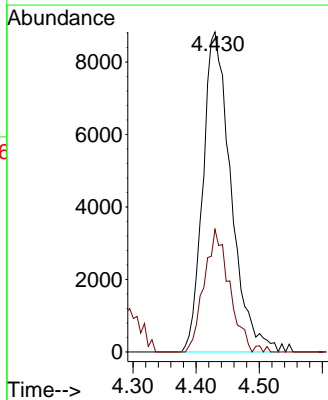
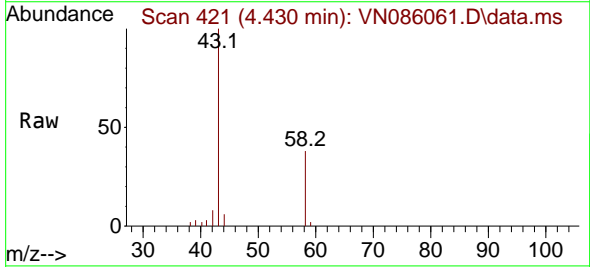
Instrument : MSVOA\_N  
 ClientSampleId : WC-SCRN-01-G

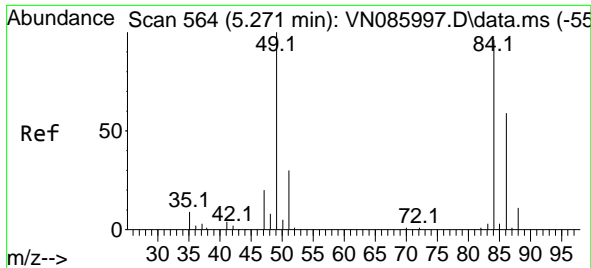
Tgt Ion:168 Resp: 140609  
 Ion Ratio Lower Upper  
 168 100  
 99 59.0 49.4 74.2



#16  
 Acetone  
 Concen: 46.196 ug/l  
 RT: 4.430 min Scan# 421  
 Delta R.T. 0.006 min  
 Lab File: VN086061.D  
 Acq: 21 Mar 2025 23:43

Tgt Ion: 43 Resp: 27174  
 Ion Ratio Lower Upper  
 43 100  
 58 38.3 29.4 44.2





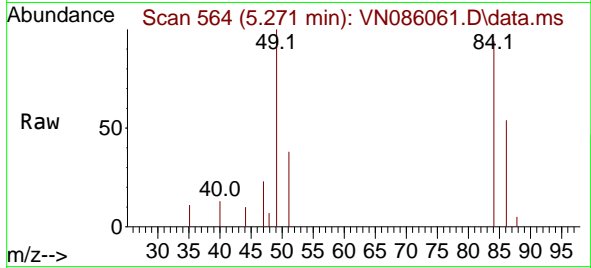
#20  
 Methylene Chloride  
 Concen: 5.675 ug/l  
 RT: 5.271 min Scan# 501  
 Delta R.T. -0.000 min  
 Lab File: VN086061.D  
 Acq: 21 Mar 2025 23:43

Instrument :

MSVOA\_N

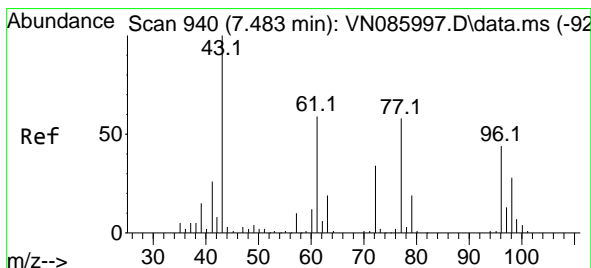
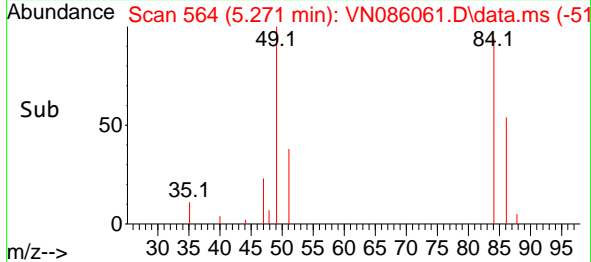
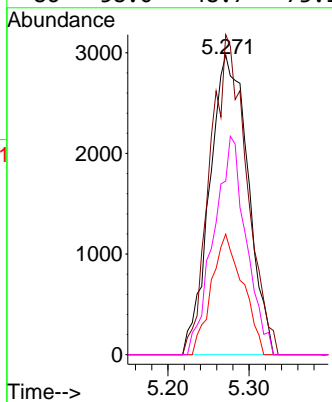
ClientSampleId :

WC-SCRN-01-G



Tgt Ion: 84 Resp: 9766

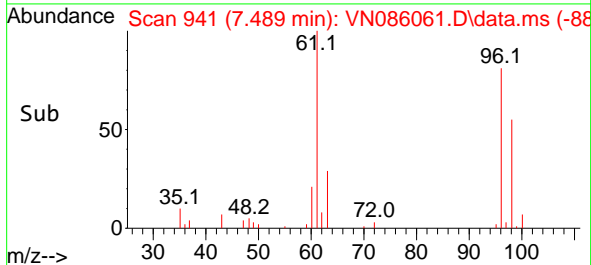
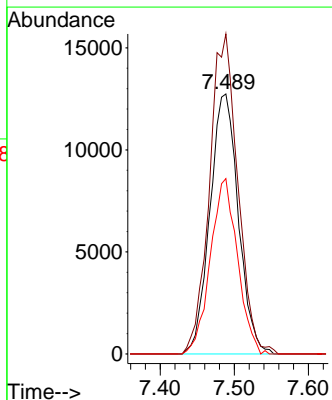
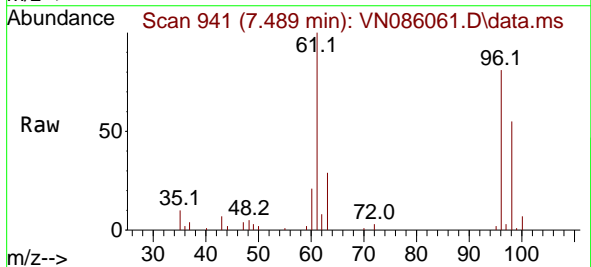
Ion	Ratio	Lower	Upper
84	100		
49	106.8	83.3	124.9
51	40.2	24.8	37.2
86	58.0	48.7	73.1

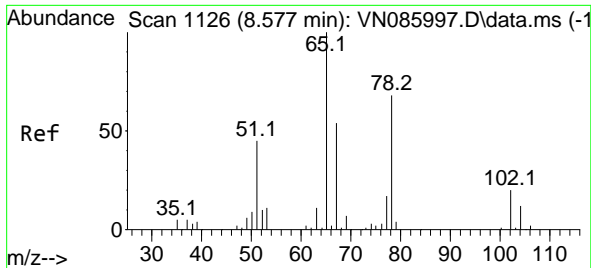


#27  
 cis-1,2-Dichloroethene  
 Concen: 18.986 ug/l  
 RT: 7.489 min Scan# 941  
 Delta R.T. 0.006 min  
 Lab File: VN086061.D  
 Acq: 21 Mar 2025 23:43

Tgt Ion: 96 Resp: 33966

Ion	Ratio	Lower	Upper
96	100		
61	122.4	0.0	272.8
98	64.4	0.0	124.8

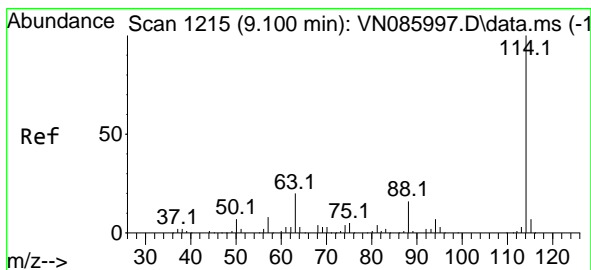
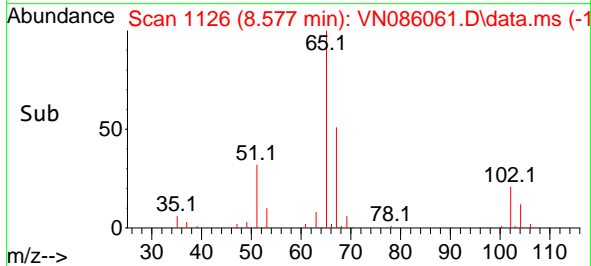
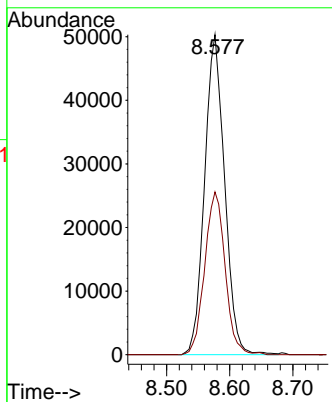
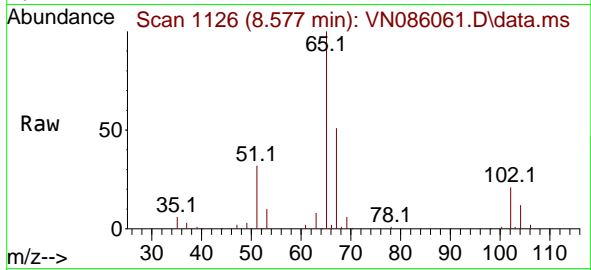




#33  
 1,2-Dichloroethane-d4  
 Concen: 57.526 ug/l  
 RT: 8.577 min Scan# 1126  
 Delta R.T. -0.000 min  
 Lab File: VN086061.D  
 Acq: 21 Mar 2025 23:43

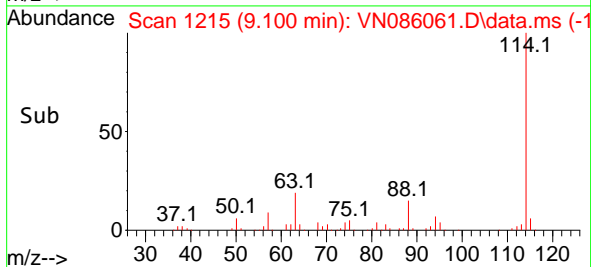
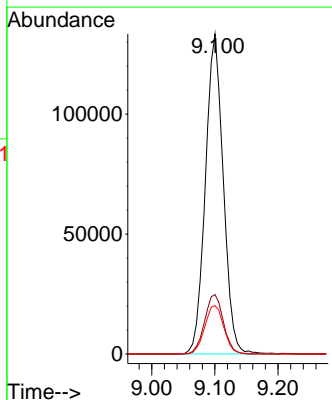
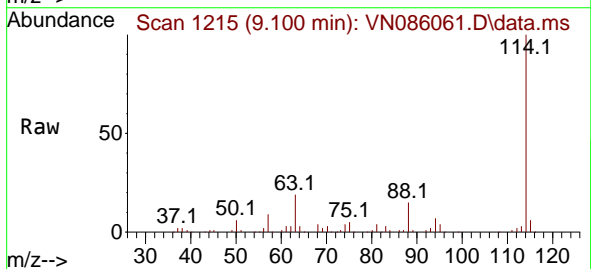
Instrument : MSVOA\_N  
 ClientSampleId : WC-SCRN-01-G

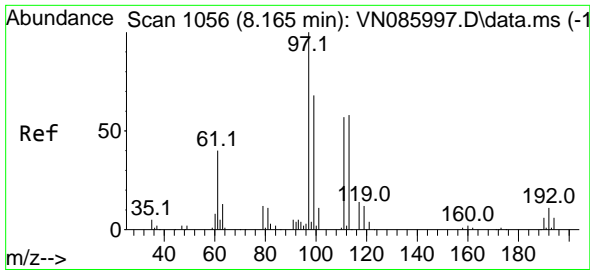
Tgt Ion: 65 Resp: 110762  
 Ion Ratio Lower Upper  
 65 100  
 67 51.9 0.0 102.2



#34  
 1,4-Difluorobenzene  
 Concen: 50.000 ug/l  
 RT: 9.100 min Scan# 1215  
 Delta R.T. -0.000 min  
 Lab File: VN086061.D  
 Acq: 21 Mar 2025 23:43

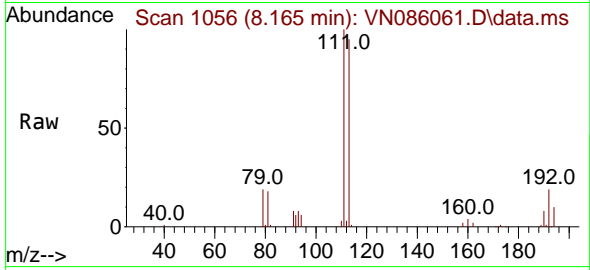
Tgt Ion:114 Resp: 262572  
 Ion Ratio Lower Upper  
 114 100  
 63 18.5 0.0 39.6  
 88 15.1 0.0 32.6





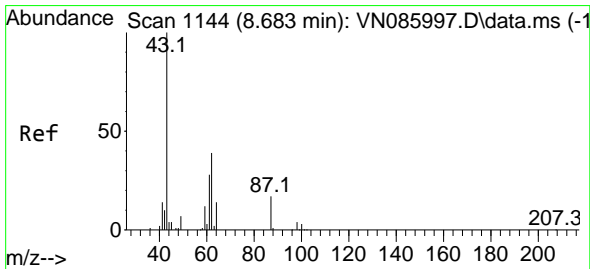
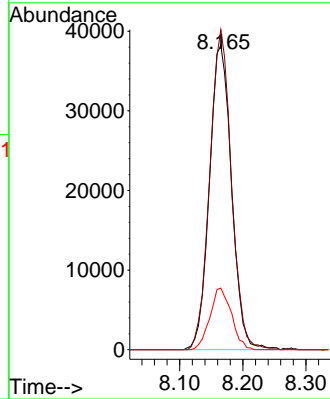
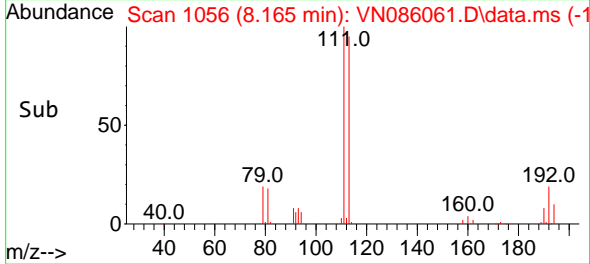
#35  
 Dibromofluoromethane  
 Concen: 50.927 ug/l  
 RT: 8.165 min Scan# 1056  
 Delta R.T. -0.000 min  
 Lab File: VN086061.D  
 Acq: 21 Mar 2025 23:43

Instrument : MSVOA\_N  
 ClientSampleId : WC-SCRN-01-G

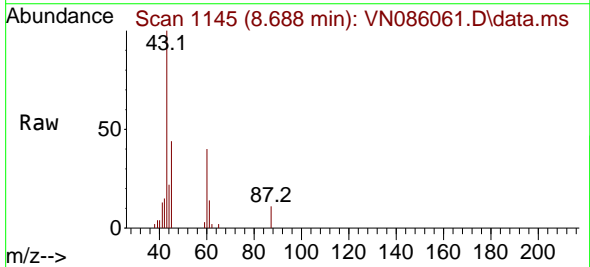


Tgt Ion: 113 Resp: 93335

Ion	Ratio	Lower	Upper
113	100		
111	102.3	81.8	122.8
192	19.6	15.9	23.9

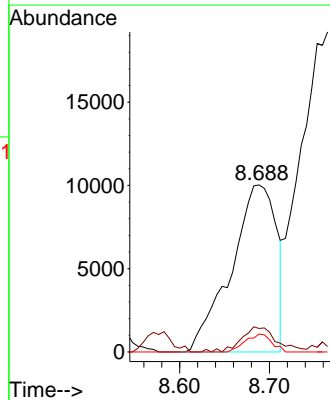
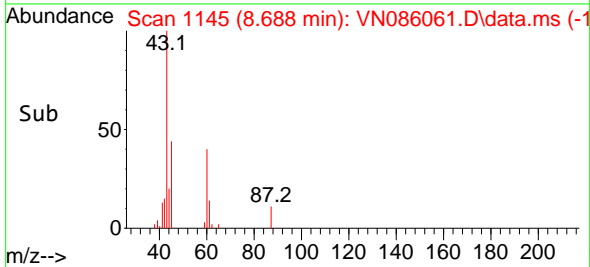


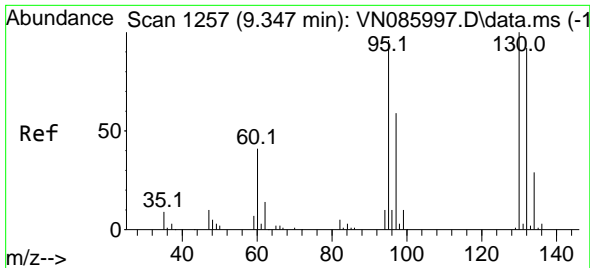
#43  
 Isopropyl Acetate  
 Concen: 7.988 ug/l  
 RT: 8.688 min Scan# 1145  
 Delta R.T. 0.006 min  
 Lab File: VN086061.D  
 Acq: 21 Mar 2025 23:43



Tgt Ion: 43 Resp: 35240

Ion	Ratio	Lower	Upper
43	100		
61	11.5	25.0	37.6#
87	6.2	13.0	19.4#

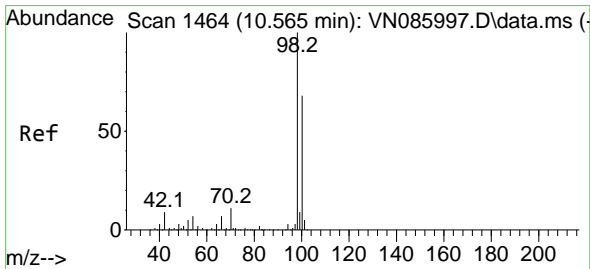
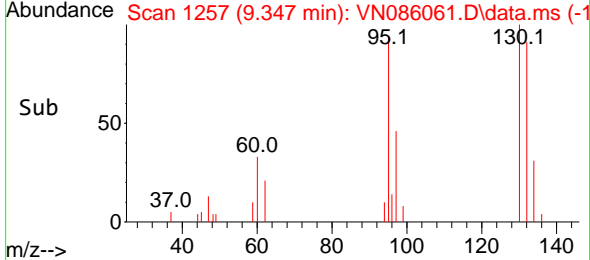
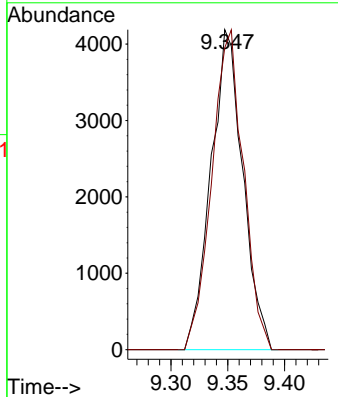
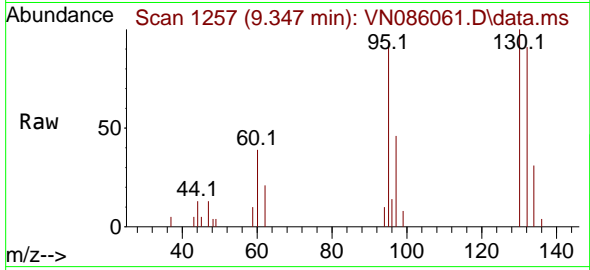




#44  
 Trichloroethene  
 Concen: 4.166 ug/l  
 RT: 9.347 min Scan# 11  
 Delta R.T. -0.000 min  
 Lab File: VN086061.D  
 Acq: 21 Mar 2025 23:43

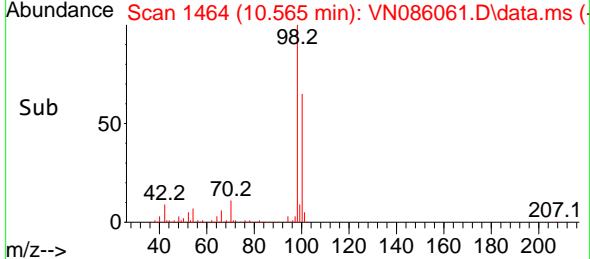
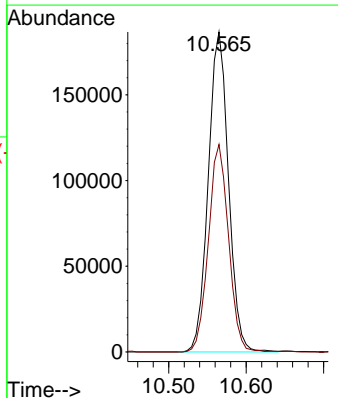
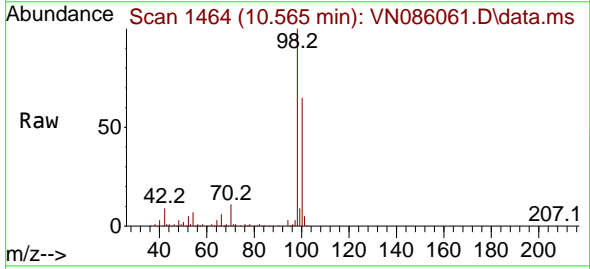
Instrument : MSVOA\_N  
 ClientSampleId : WC-SCRN-01-G

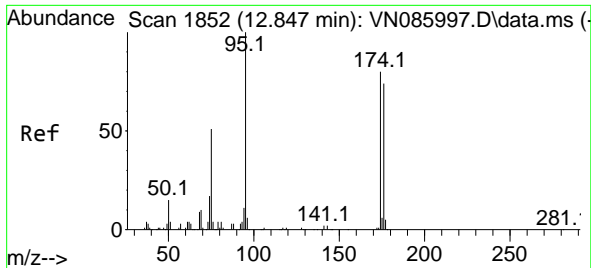
Tgt Ion:130 Resp: 8180  
 Ion Ratio Lower Upper  
 130 100  
 95 94.4 0.0 191.6



#50  
 Toluene-d8  
 Concen: 50.814 ug/l  
 RT: 10.565 min Scan# 1464  
 Delta R.T. -0.000 min  
 Lab File: VN086061.D  
 Acq: 21 Mar 2025 23:43

Tgt Ion: 98 Resp: 337987  
 Ion Ratio Lower Upper  
 98 100  
 100 64.7 53.1 79.7

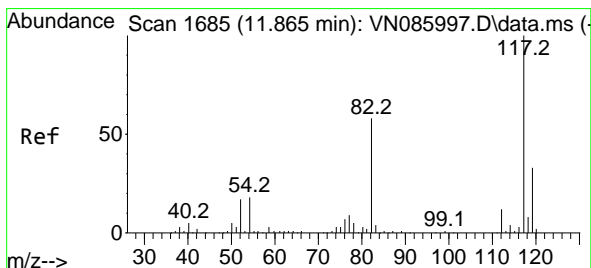
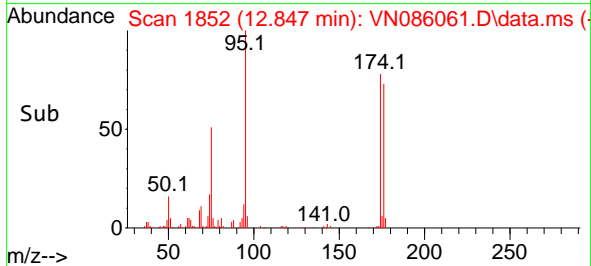
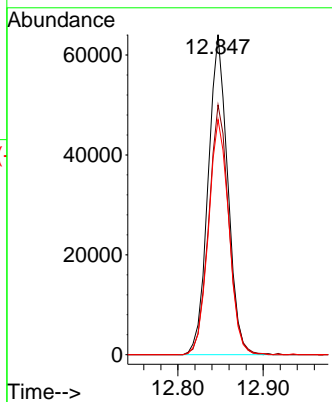
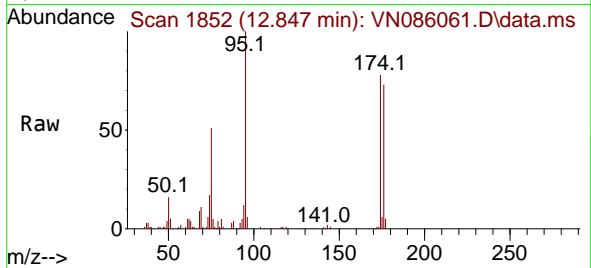




#62  
 4-Bromofluorobenzene  
 Concen: 42.982 ug/l  
 RT: 12.847 min Scan# 1852  
 Delta R.T. -0.000 min  
 Lab File: VN086061.D  
 Acq: 21 Mar 2025 23:43

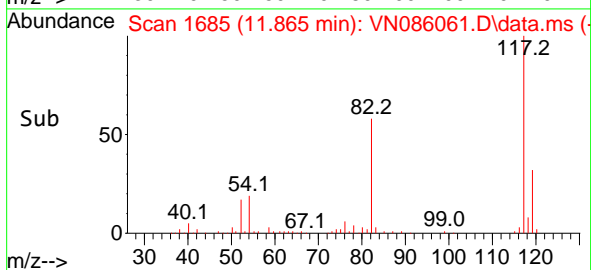
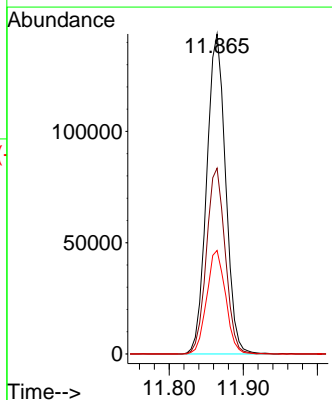
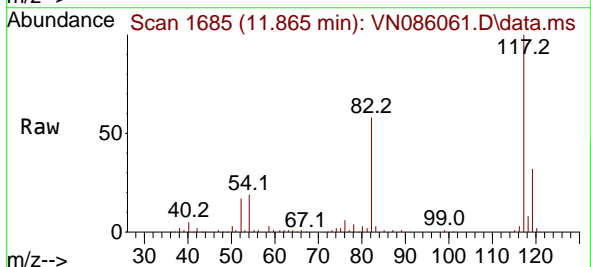
Instrument : MSVOA\_N  
 ClientSampleId : WC-SCRN-01-G

Tgt Ion	Resp	Lower	Upper
95	101958		
174	80.4	0.0	156.8
176	76.4	0.0	152.2

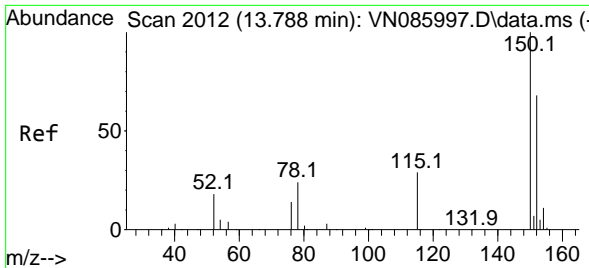


#63  
 Chlorobenzene-d5  
 Concen: 50.000 ug/l  
 RT: 11.865 min Scan# 1685  
 Delta R.T. -0.000 min  
 Lab File: VN086061.D  
 Acq: 21 Mar 2025 23:43

Tgt Ion	Resp	Lower	Upper
117	254973		
82	58.1	46.7	70.1
119	32.3	26.5	39.7

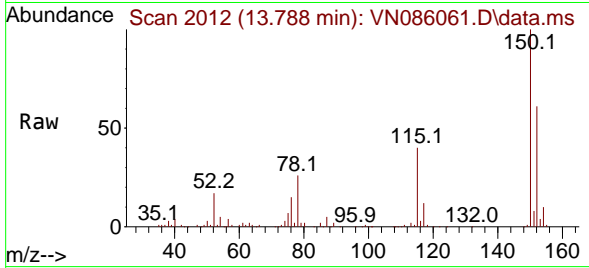




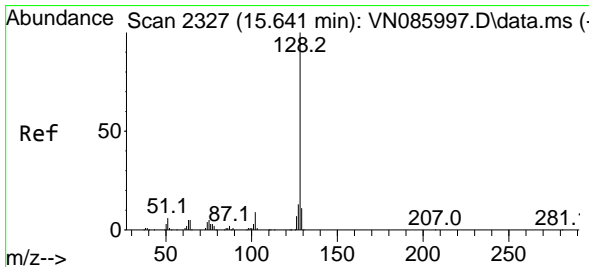
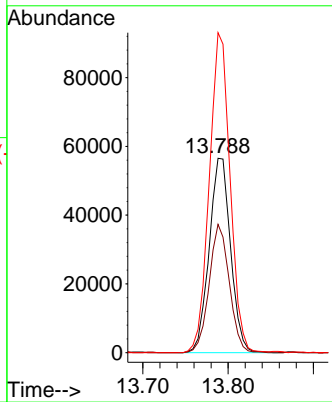
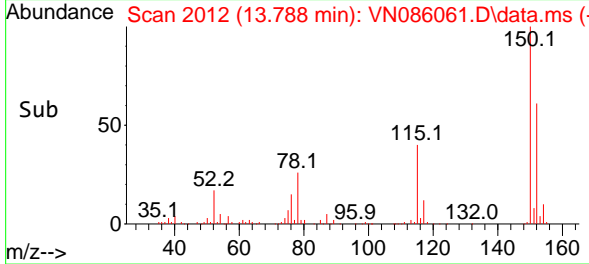


#72  
 1,4-Dichlorobenzene-d4  
 Concen: 50.000 ug/l  
 RT: 13.788 min Scan# 20  
 Delta R.T. -0.000 min  
 Lab File: VN086061.D  
 Acq: 21 Mar 2025 23:43

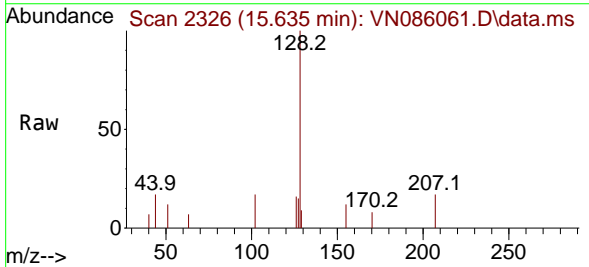
Instrument :  
 MSVOA\_N  
 ClientSampleId :  
 WC-SCRN-01-G



Tgt Ion:152 Resp: 98590  
 Ion Ratio Lower Upper  
 152 100  
 115 62.2 31.1 93.2  
 150 159.5 0.0 359.6



#95  
 Naphthalene  
 Concen: 1.048 ug/l  
 RT: 15.635 min Scan# 2326  
 Delta R.T. -0.006 min  
 Lab File: VN086061.D  
 Acq: 21 Mar 2025 23:43



Tgt Ion:128 Resp: 5135  
 Ion Ratio Lower Upper  
 128 100  
 127 11.0 10.2 15.4  
 129 8.3 9.0 13.6#

