

Data Path : Z:\voasrv\HPCHEM1\MSVOA_N\Data\VN032222\
 Data File : VN071471.D
 Acq On : 22 Mar 2022 16:57
 Operator : JC\MD
 Sample : N2061-03
 Misc : 5.0mL/MSVOA_N/WATER
 ALS Vial : 17 Sample Multiplier: 1

Instrument :
 MSVOA_N
 ClientSampleId :
 EB-20220321

Quant Time: Mar 23 07:09:33 2022
 Quant Method : Z:\voasrv\HPCHEM1\MSVOA_N\methods\82N030722W.M
 Quant Title : SW846 8260
 QLast Update : Tue Mar 08 06:52:46 2022
 Response via : Initial Calibration

Compound	R.T.	QIon	Response	Conc	Units	Dev(Min)

Internal Standards						
1) Pentafluorobenzene	8.081	168	684900	50.000	ug/l	0.00
34) 1,4-Difluorobenzene	8.963	114	1183991	50.000	ug/l	0.00
63) Chlorobenzene-d5	11.739	117	1101532	50.000	ug/l	0.00
72) 1,4-Dichlorobenzene-d4	13.669	152	387540	50.000	ug/l	0.00

System Monitoring Compounds						
33) 1,2-Dichloroethane-d4	8.434	65	457672	48.757	ug/l	0.00
Spiked Amount	50.000	Range 61 - 141	Recovery =	97.520%		
35) Dibromofluoromethane	8.016	113	349014	46.713	ug/l	0.00
Spiked Amount	50.000	Range 69 - 133	Recovery =	93.420%		
50) Toluene-d8	10.439	98	1451922	48.265	ug/l	0.00
Spiked Amount	50.000	Range 65 - 126	Recovery =	96.540%		
62) 4-Bromofluorobenzene	12.727	95	522909	51.333	ug/l	0.00
Spiked Amount	50.000	Range 58 - 135	Recovery =	102.660%		

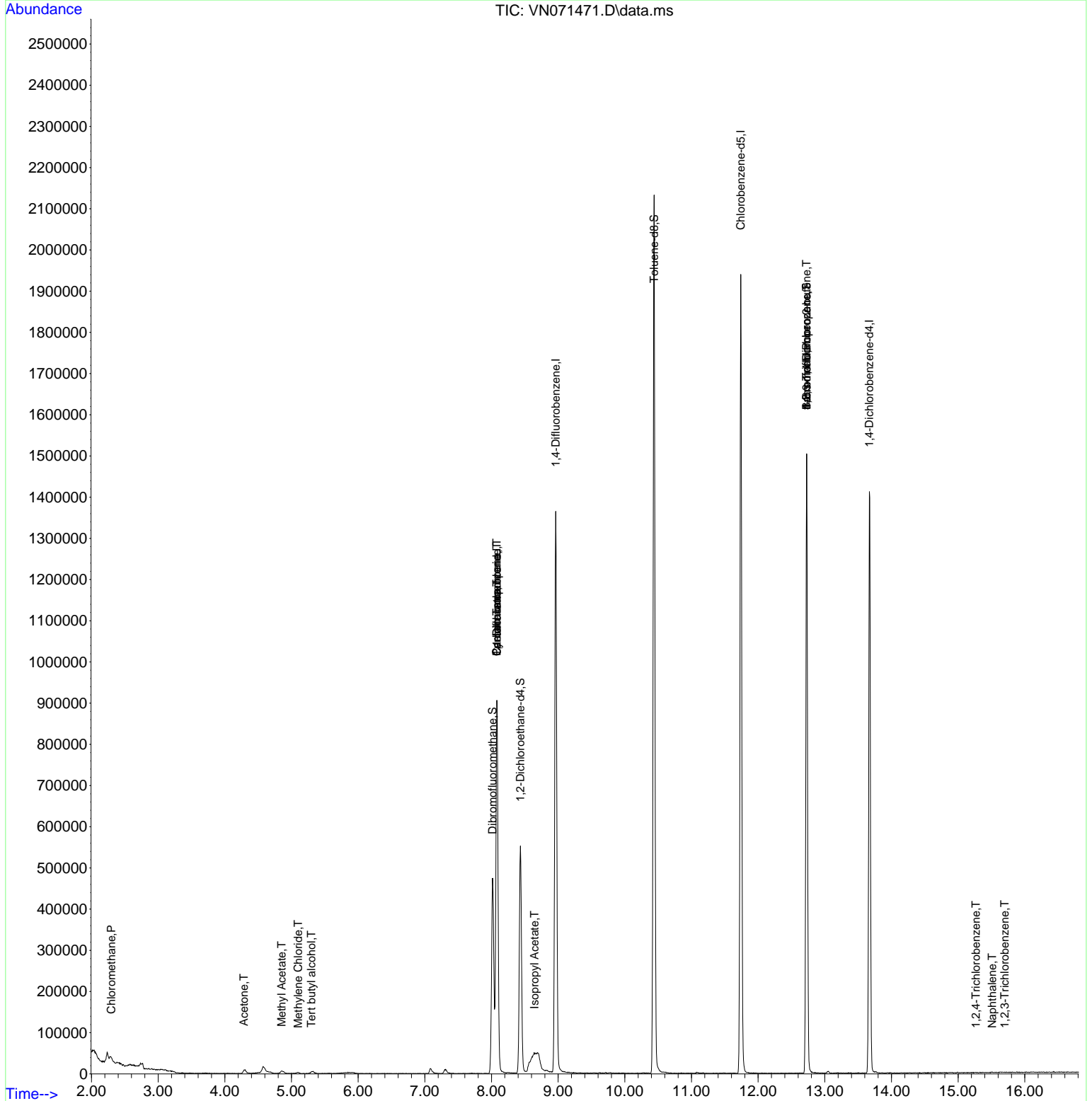
Target Compounds	R.T.	QIon	Response	Conc	Units	Qvalue
3) Chloromethane	2.299	50	3296	0.293	ug/l #	73
5) Bromomethane	2.852	94	1208	Below Cal		89
11) Tert butyl alcohol	5.299	59	1784	0.967	ug/l #	71
16) Acetone	4.287	43	14059	3.078	ug/l	91
18) Methyl Acetate	4.851	43	13987	1.600	ug/l	91
20) Methylene Chloride	5.099	84	1378	0.546	ug/l #	86
31) Cyclohexane	8.081	56	14878	0.993	ug/l #	1
36) 1,1-Dichloropropene	8.081	75	56262	4.700	ug/l #	49
38) Carbon Tetrachloride	8.081	117	67870	5.862	ug/l #	17
43) Isopropyl Acetate	8.645	43	78630	3.192	ug/l #	56
71) Bromoform	12.727	173	3180	0.483	ug/l #	29
75) 1,1,2,2-Tetrachloroethane	12.722	83	300	Below Cal	#	1
76) 1,2,3-Trichloropropane	12.727	75	269561	27.425	ug/l #	1
81) trans-1,4-Dichloro-2-b...	12.727	75	269561	75.191	ug/l #	5
93) 1,2,4-Trichlorobenzene	15.268	180	410	3.050	ug/l #	23
95) Naphthalene	15.510	128	1232	5.130	ug/l #	83
96) 1,2,3-Trichlorobenzene	15.698	180	233	2.768	ug/l #	34

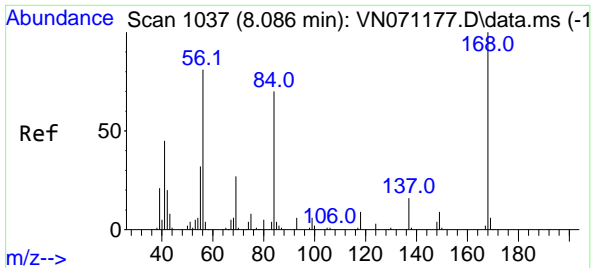
(#) = qualifier out of range (m) = manual integration (+) = signals summed

Data Path : Z:\voasrv\HPCHEM1\MSVOA_N\Data\VN032222\
 Data File : VN071471.D
 Acq On : 22 Mar 2022 16:57
 Operator : JC\MD
 Sample : N2061-03
 Misc : 5.0mL/MSVOA_N/WATER
 ALS Vial : 17 Sample Multiplier: 1

Instrument :
 MSVOA_N
 ClientSampleId :
 EB-20220321

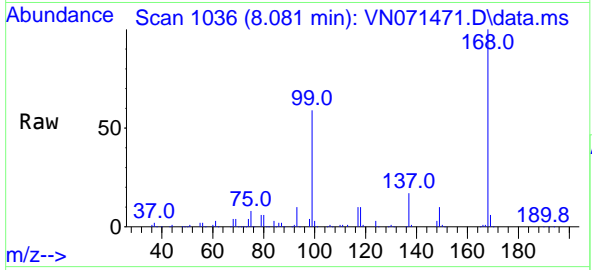
Quant Time: Mar 23 07:09:33 2022
 Quant Method : Z:\voasrv\HPCHEM1\MSVOA_N\methods\82N030722W.M
 Quant Title : SW846 8260
 QLast Update : Tue Mar 08 06:52:46 2022
 Response via : Initial Calibration



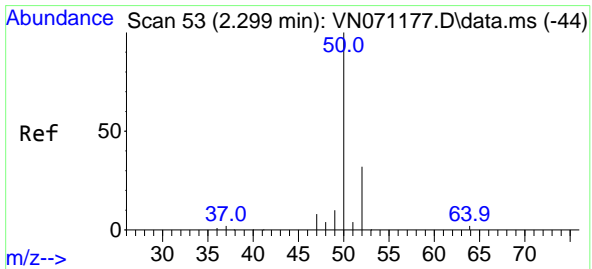
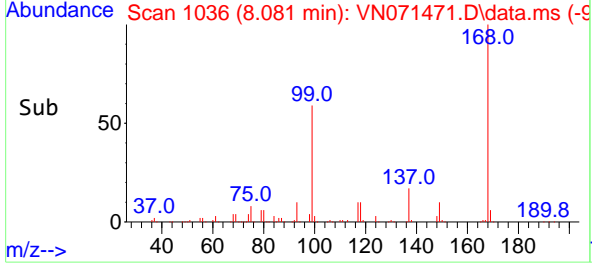
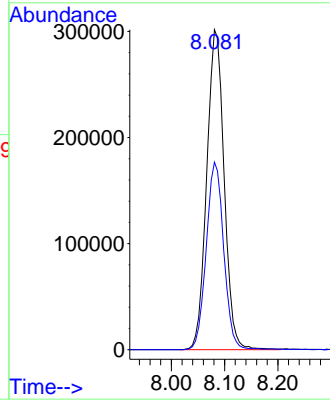


#1
 Pentafluorobenzene
 Concen: 50.000 ug/l
 RT: 8.081 min Scan# 10
 Delta R.T. -0.005 min
 Lab File: VN071471.D
 Acq: 22 Mar 2022 16:57

Instrument :
 MSVOA_N
 ClientSampleId :
 EB-20220321

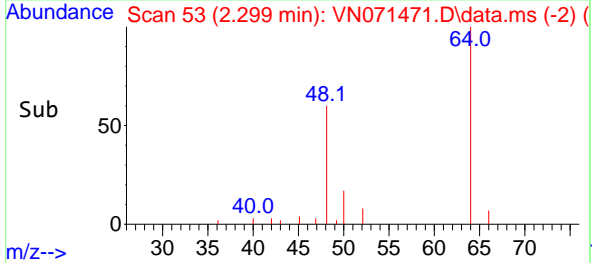
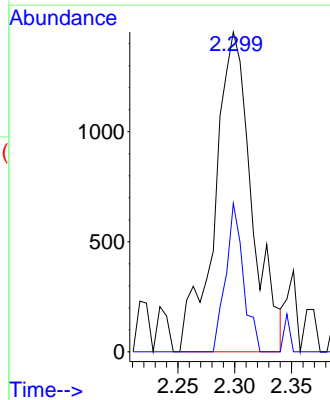
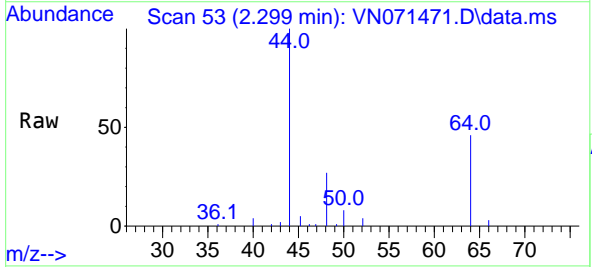


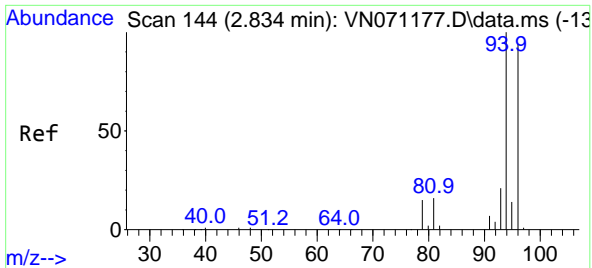
Tgt Ion:168 Resp: 684900
 Ion Ratio Lower Upper
 168 100
 99 58.6 41.3 61.9



#3
 Chloromethane
 Concen: 0.293 ug/l
 RT: 2.299 min Scan# 53
 Delta R.T. -0.000 min
 Lab File: VN071471.D
 Acq: 22 Mar 2022 16:57

Tgt Ion: 50 Resp: 3296
 Ion Ratio Lower Upper
 50 100
 52 46.5 25.4 38.0#

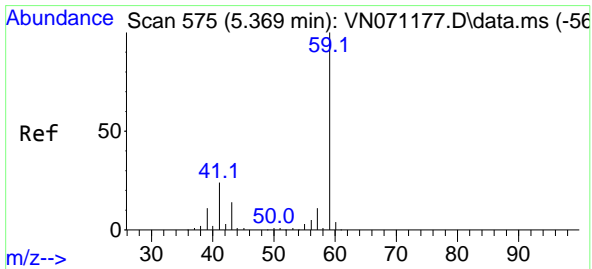
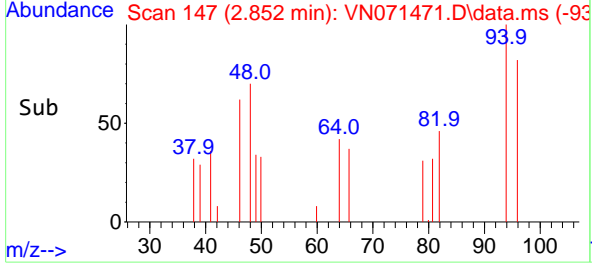
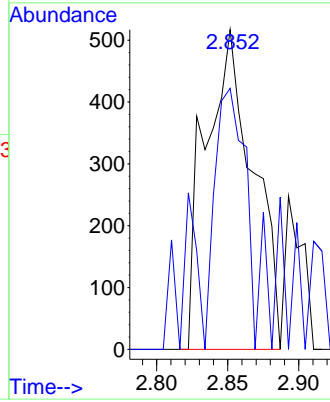
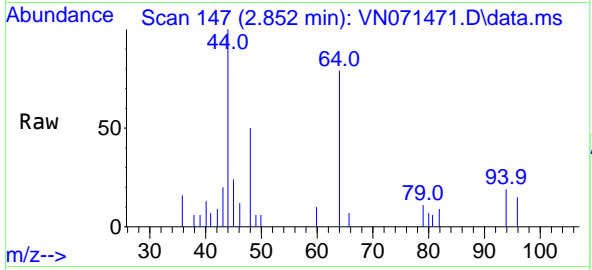




#5
 Bromomethane
 Concen: Below Cal
 RT: 2.852 min Scan# 14
 Delta R.T. 0.018 min
 Lab File: VN071471.D
 Acq: 22 Mar 2022 16:57

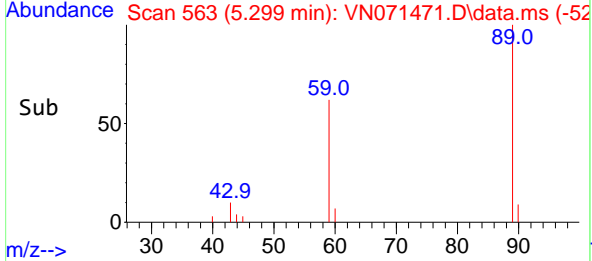
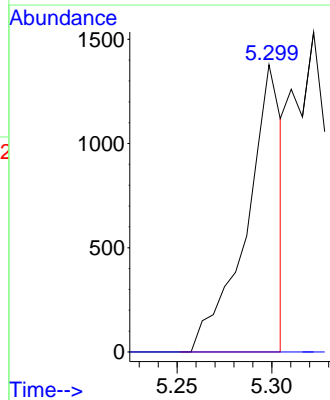
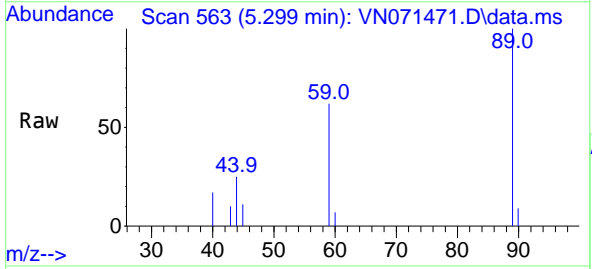
Instrument :
 MSVOA_N
 ClientSampleId :
 EB-20220321

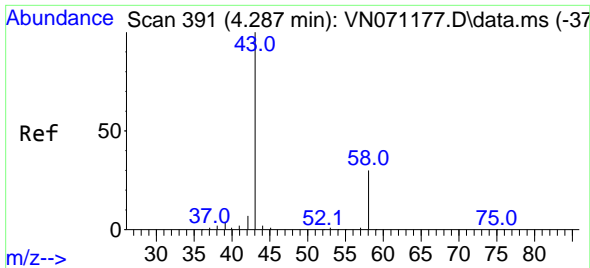
Tgt Ion: 94 Resp: 1208
 Ion Ratio Lower Upper
 94 100
 96 81.6 73.8 110.8



#11
 Tert butyl alcohol
 Concen: 0.967 ug/l
 RT: 5.299 min Scan# 563
 Delta R.T. -0.070 min
 Lab File: VN071471.D
 Acq: 22 Mar 2022 16:57

Tgt Ion: 59 Resp: 1784
 Ion Ratio Lower Upper
 59 100
 57 0.0 8.7 13.1#

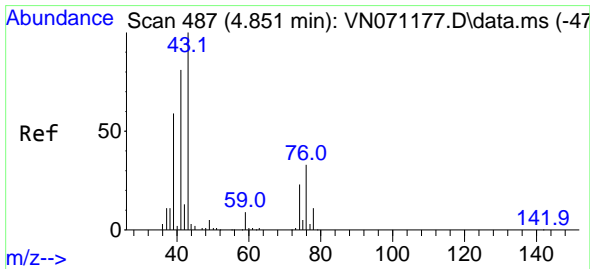
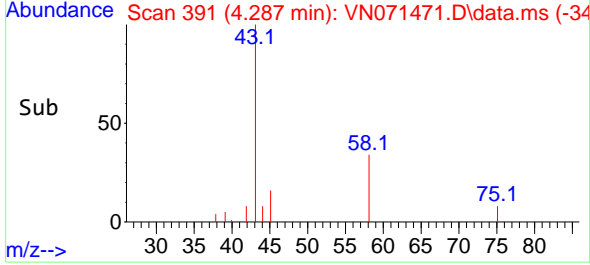
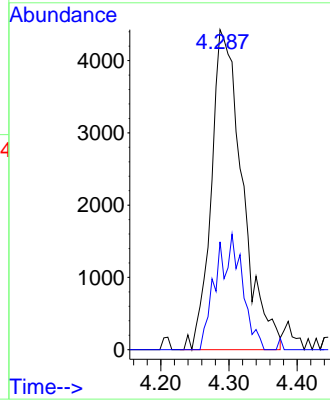
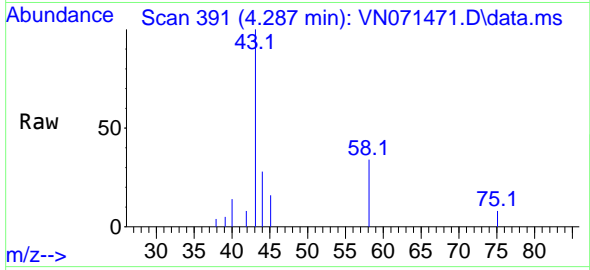




#16
 Acetone
 Concen: 3.078 ug/l
 RT: 4.287 min Scan# 391
 Delta R.T. 0.000 min
 Lab File: VN071471.D
 Acq: 22 Mar 2022 16:57

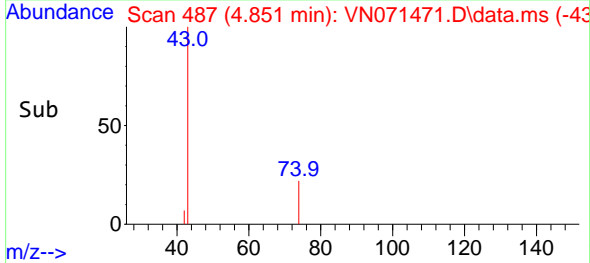
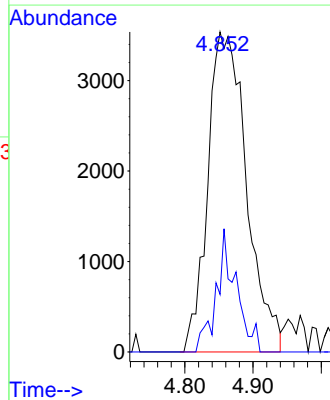
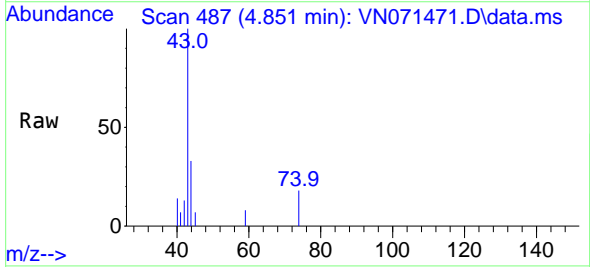
Instrument : MSVOA_N
 ClientSampleId : EB-20220321

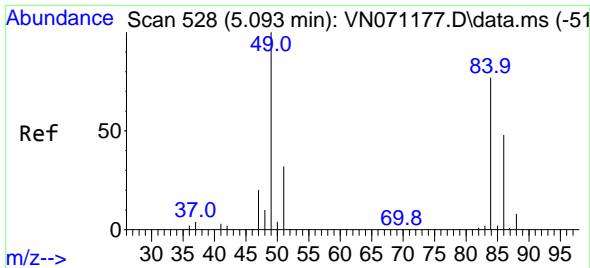
Tgt Ion: 43 Resp: 14059
 Ion Ratio Lower Upper
 43 100
 58 33.7 23.1 34.7



#18
 Methyl Acetate
 Concen: 1.600 ug/l
 RT: 4.851 min Scan# 487
 Delta R.T. 0.000 min
 Lab File: VN071471.D
 Acq: 22 Mar 2022 16:57

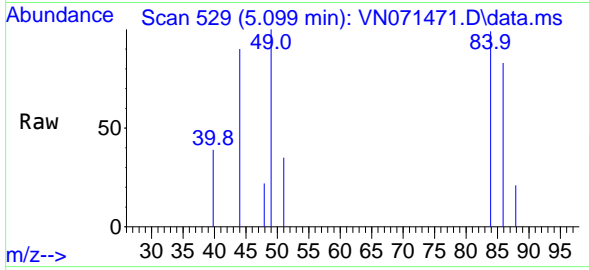
Tgt Ion: 43 Resp: 13987
 Ion Ratio Lower Upper
 43 100
 74 19.7 19.4 29.2





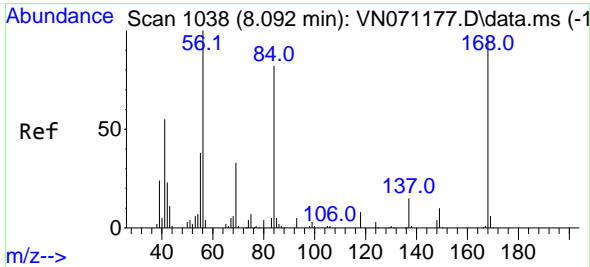
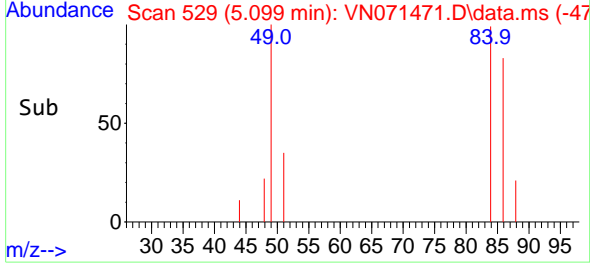
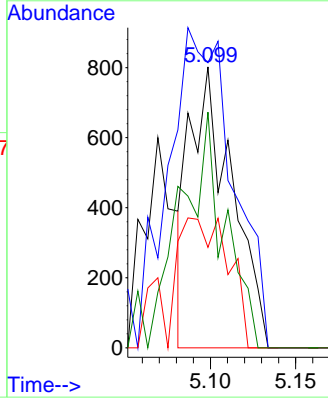
#20
 Methylene Chloride
 Concen: 0.546 ug/l
 RT: 5.099 min Scan# 51
 Delta R.T. 0.006 min
 Lab File: VN071471.D
 Acq: 22 Mar 2022 16:57

Instrument :
 MSVOA_N
 ClientSampleId :
 EB-20220321



Tgt Ion: 84 Resp: 1378

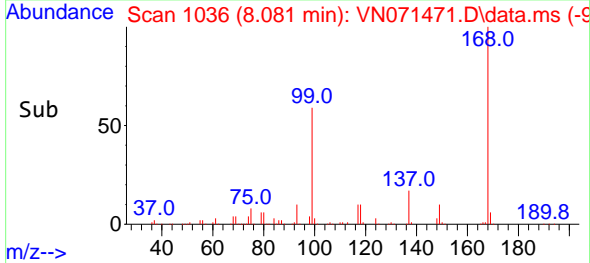
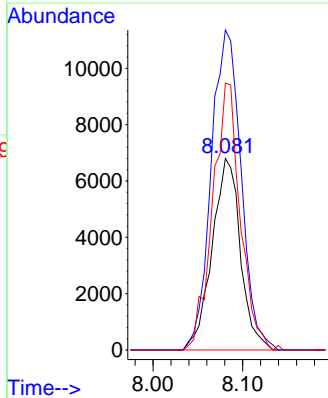
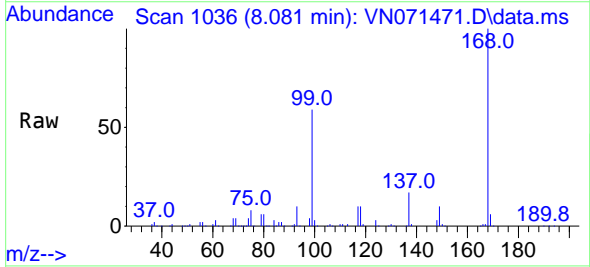
Ion	Ratio	Lower	Upper
84	100		
49	101.5	93.5	140.3
51	35.8	29.4	44.2
86	83.9	53.0	79.4#

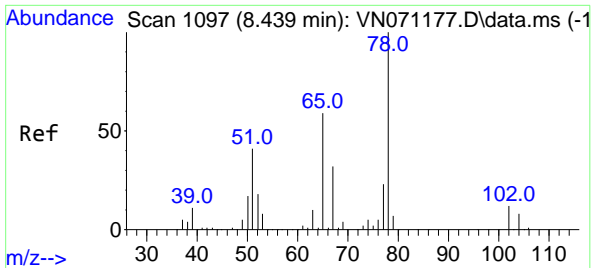


#31
 Cyclohexane
 Concen: 0.993 ug/l
 RT: 8.081 min Scan# 1036
 Delta R.T. -0.012 min
 Lab File: VN071471.D
 Acq: 22 Mar 2022 16:57

Tgt Ion: 56 Resp: 14878

Ion	Ratio	Lower	Upper
56	100		
69	167.0	27.1	40.7#
84	139.3	73.4	110.0#

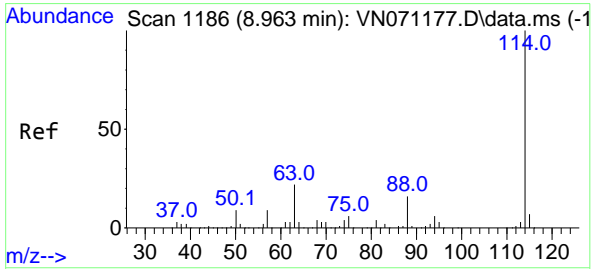
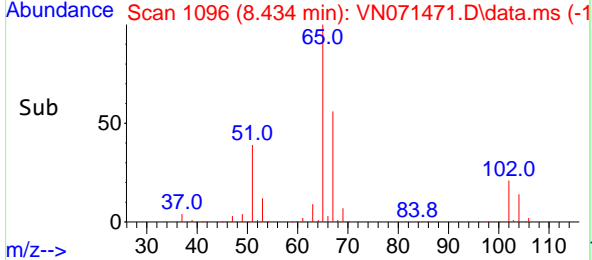
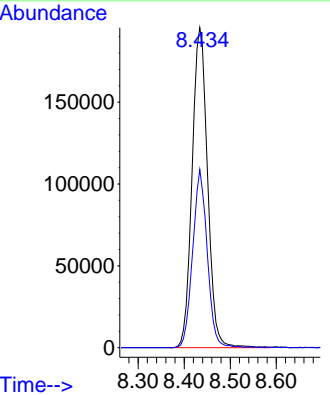
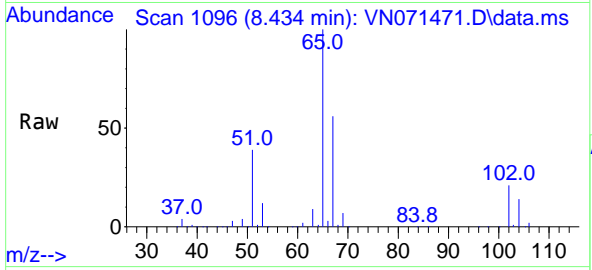




#33
 1,2-Dichloroethane-d4
 Concen: 48.757 ug/l
 RT: 8.434 min Scan# 1096
 Delta R.T. -0.006 min
 Lab File: VN071471.D
 Acq: 22 Mar 2022 16:57

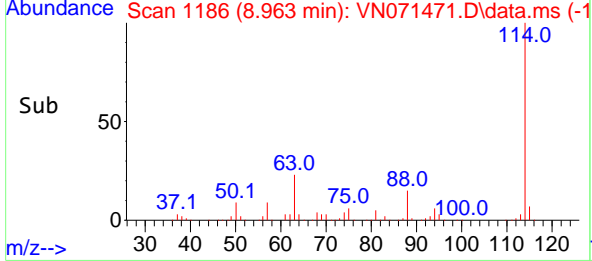
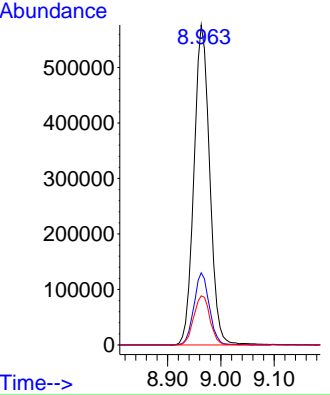
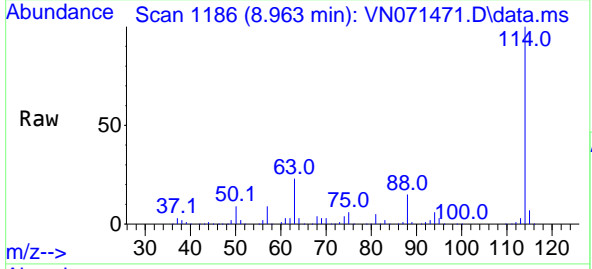
Instrument : MSVOA_N
 ClientSampleId : EB-20220321

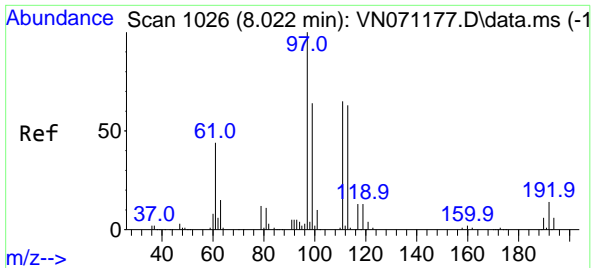
Tgt Ion: 65 Resp: 457672
 Ion Ratio Lower Upper
 65 100
 67 52.6 0.0 103.0



#34
 1,4-Difluorobenzene
 Concen: 50.000 ug/l
 RT: 8.963 min Scan# 1186
 Delta R.T. 0.000 min
 Lab File: VN071471.D
 Acq: 22 Mar 2022 16:57

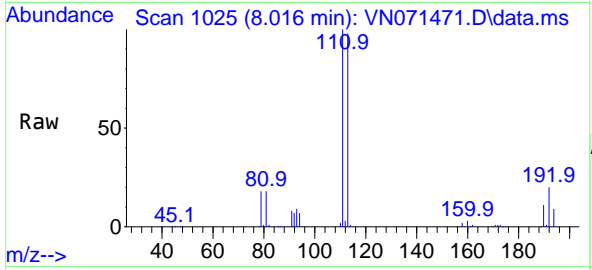
Tgt Ion: 114 Resp: 1183991
 Ion Ratio Lower Upper
 114 100
 63 22.5 0.0 37.8
 88 15.4 0.0 27.4



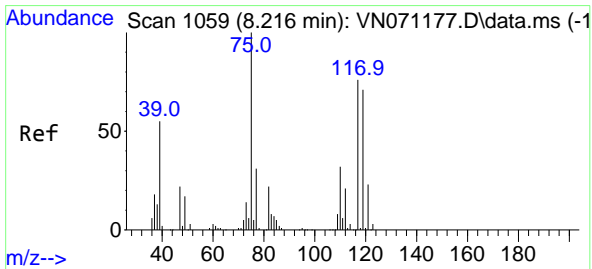
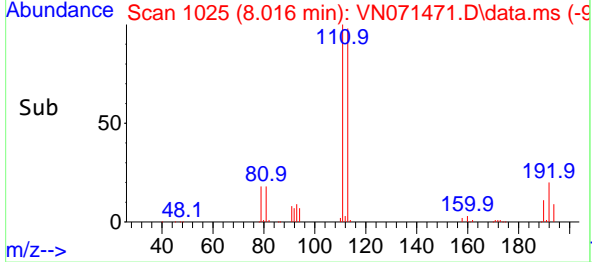
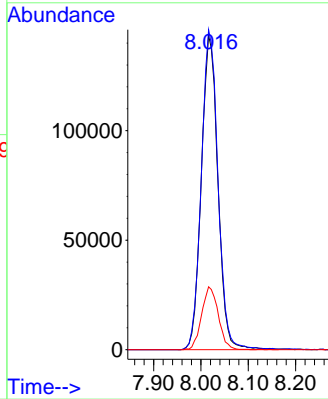


#35
 Dibromofluoromethane
 Concen: 46.713 ug/l
 RT: 8.016 min Scan# 1036
 Delta R.T. -0.006 min
 Lab File: VN071471.D
 Acq: 22 Mar 2022 16:57

Instrument : MSVOA_N
 ClientSampleId : EB-20220321

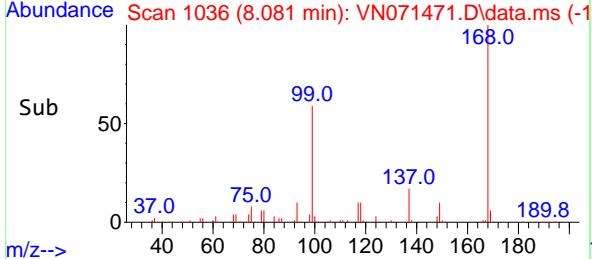
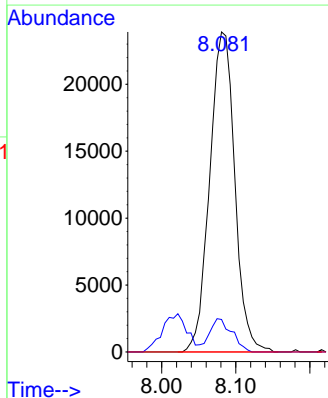
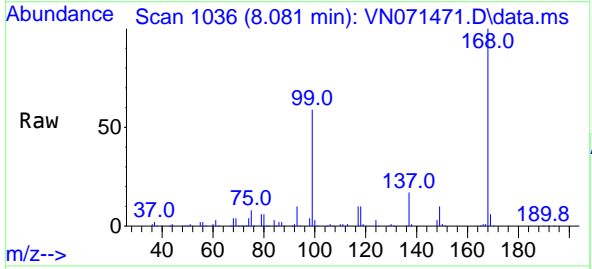


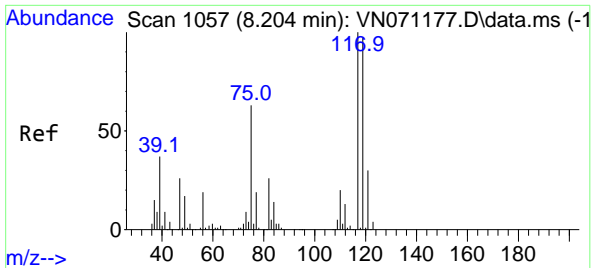
Tgt Ion:113 Resp: 349014
 Ion Ratio Lower Upper
 113 100
 111 102.6 82.2 123.2
 192 20.1 16.9 25.3



#36
 1,1-Dichloropropene
 Concen: 4.700 ug/l
 RT: 8.081 min Scan# 1036
 Delta R.T. -0.135 min
 Lab File: VN071471.D
 Acq: 22 Mar 2022 16:57

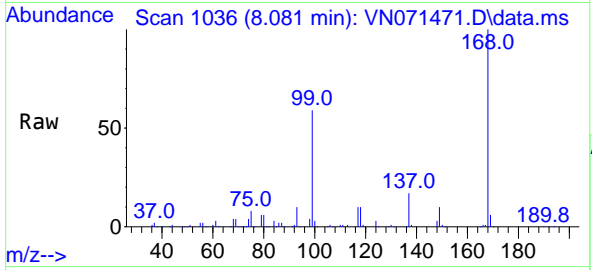
Tgt Ion: 75 Resp: 56262
 Ion Ratio Lower Upper
 75 100
 110 9.2 18.4 55.2#
 77 0.0 24.4 36.6#



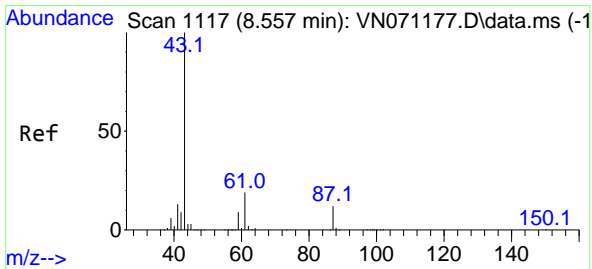
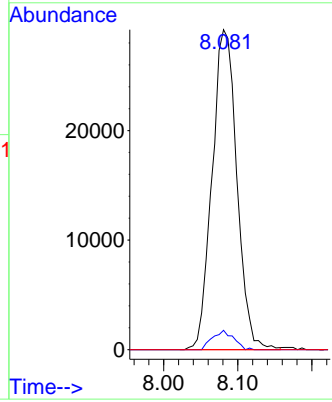
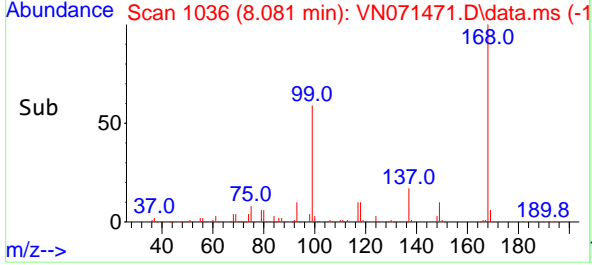


#38
 Carbon Tetrachloride
 Concen: 5.862 ug/l
 RT: 8.081 min Scan# 1132
 Delta R.T. -0.123 min
 Lab File: VN071471.D
 Acq: 22 Mar 2022 16:57

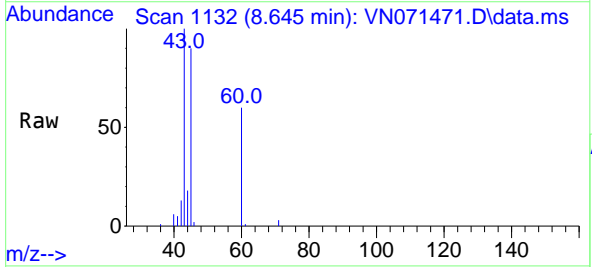
Instrument : MSVOA_N
 ClientSampleId : EB-20220321



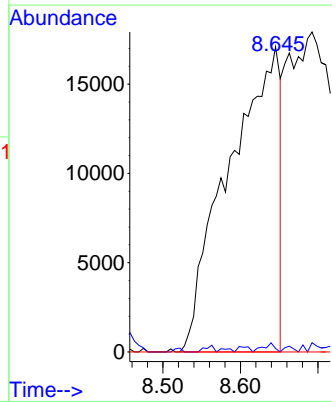
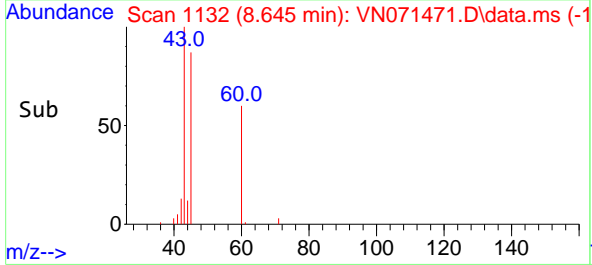
Tgt Ion:117 Resp: 67870
 Ion Ratio Lower Upper
 117 100
 119 6.1 76.1 114.1#
 121 0.0 24.2 36.2#

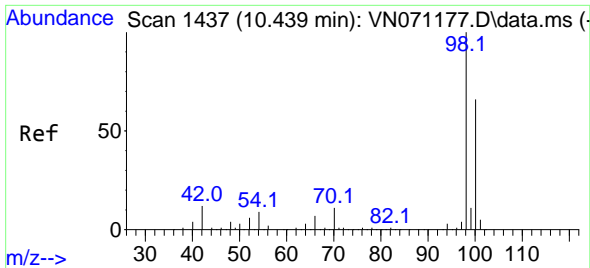


#43
 Isopropyl Acetate
 Concen: 3.192 ug/l
 RT: 8.645 min Scan# 1132
 Delta R.T. 0.088 min
 Lab File: VN071471.D
 Acq: 22 Mar 2022 16:57



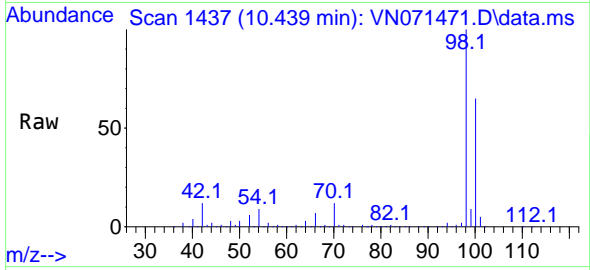
Tgt Ion: 43 Resp: 78630
 Ion Ratio Lower Upper
 43 100
 61 0.6 20.4 30.6#
 87 0.0 11.2 16.8#



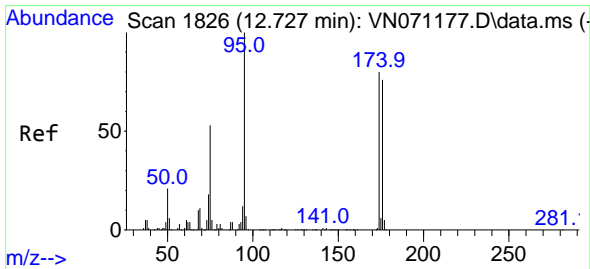
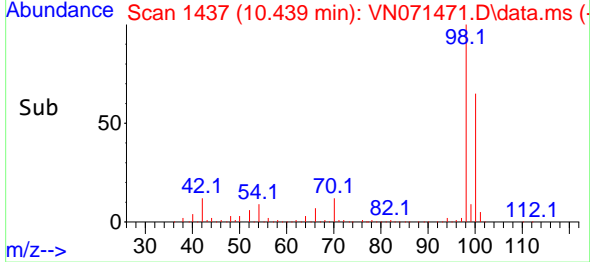
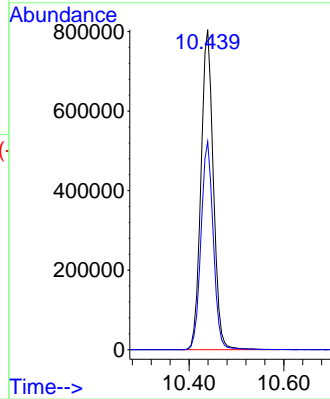


#50
 Toluene-d8
 Concen: 48.265 ug/l
 RT: 10.439 min Scan# 1437
 Delta R.T. 0.000 min
 Lab File: VN071471.D
 Acq: 22 Mar 2022 16:57

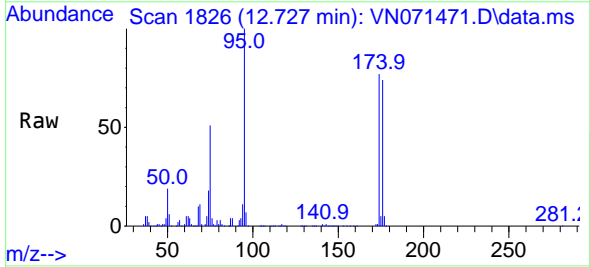
Instrument : MSVOA_N
 ClientSampleId : EB-20220321



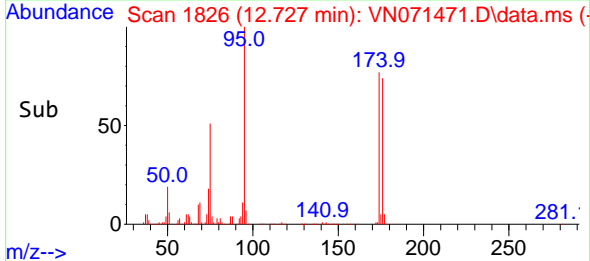
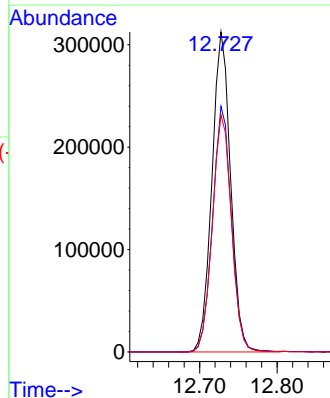
Tgt Ion: 98 Resp: 1451922
 Ion Ratio Lower Upper
 98 100
 100 64.7 50.4 75.6

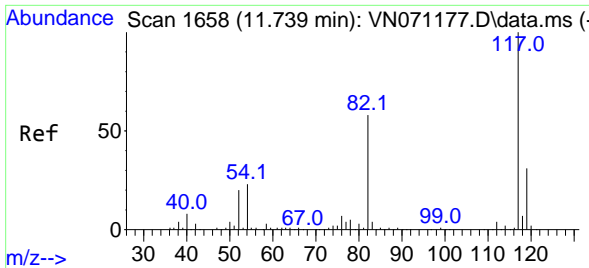


#62
 4-Bromofluorobenzene
 Concen: 51.333 ug/l
 RT: 12.727 min Scan# 1826
 Delta R.T. 0.000 min
 Lab File: VN071471.D
 Acq: 22 Mar 2022 16:57



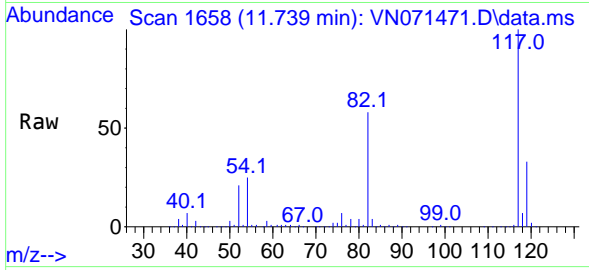
Tgt Ion: 95 Resp: 522909
 Ion Ratio Lower Upper
 95 100
 174 77.9 0.0 187.2
 176 75.5 0.0 181.4



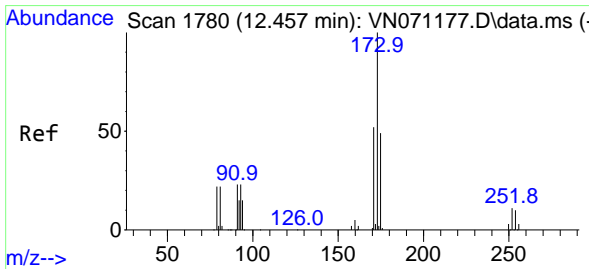
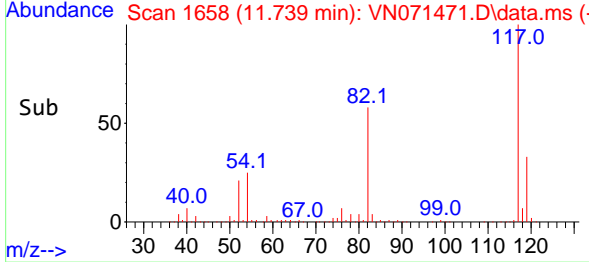
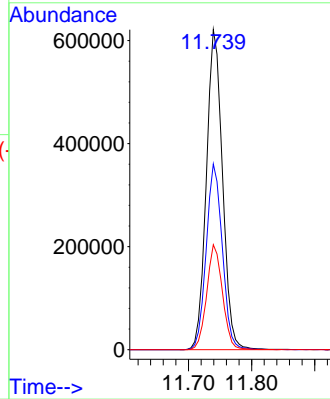


#63
 Chlorobenzene-d5
 Concen: 50.000 ug/l
 RT: 11.739 min Scan# 1170
 Delta R.T. 0.000 min
 Lab File: VN071471.D
 Acq: 22 Mar 2022 16:57

Instrument : MSVOA_N
 ClientSampleId : EB-20220321

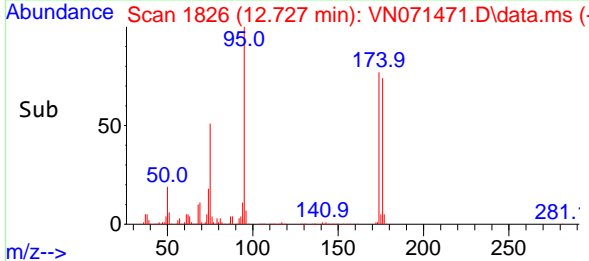
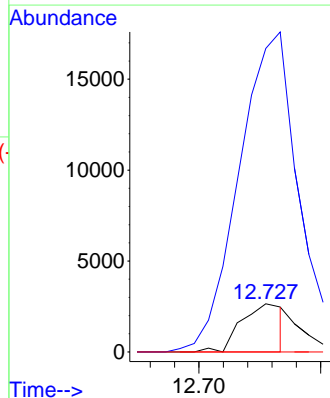
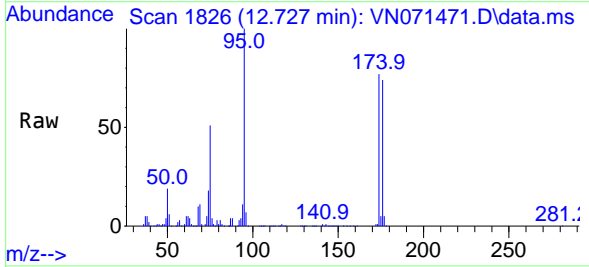


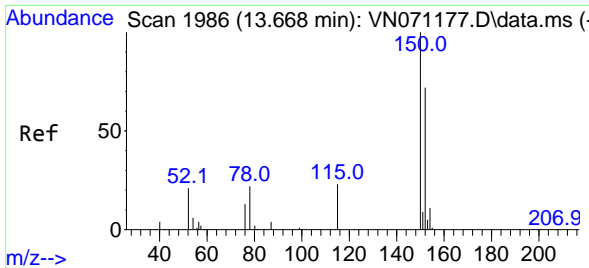
Tgt Ion:117 Resp: 1101532
 Ion Ratio Lower Upper
 117 100
 82 58.1 42.4 63.6
 119 32.8 25.4 38.2



#71
 Bromoform
 Concen: 0.483 ug/l
 RT: 12.727 min Scan# 1826
 Delta R.T. 0.270 min
 Lab File: VN071471.D
 Acq: 22 Mar 2022 16:57

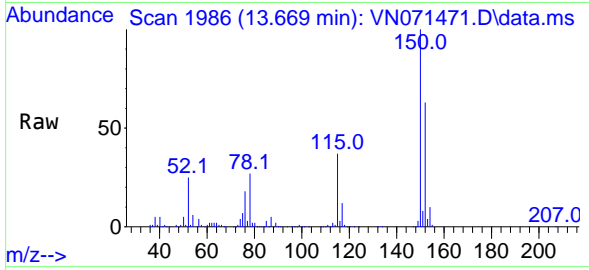
Tgt Ion:173 Resp: 3180
 Ion Ratio Lower Upper
 173 100
 175 0.0 24.2 72.6#
 254 0.0 0.0 0.0



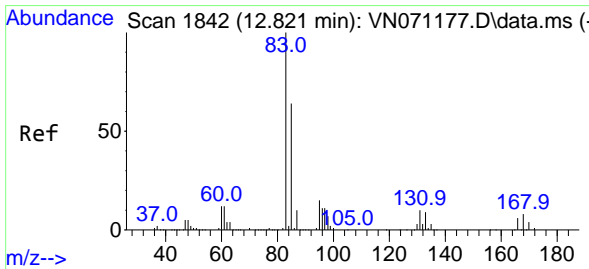
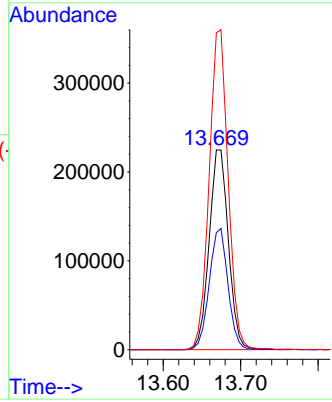
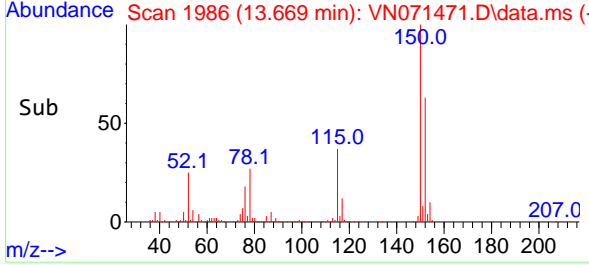


#72
 1,4-Dichlorobenzene-d4
 Concen: 50.000 ug/l
 RT: 13.669 min Scan# 1986
 Delta R.T. 0.001 min
 Lab File: VN071471.D
 Acq: 22 Mar 2022 16:57

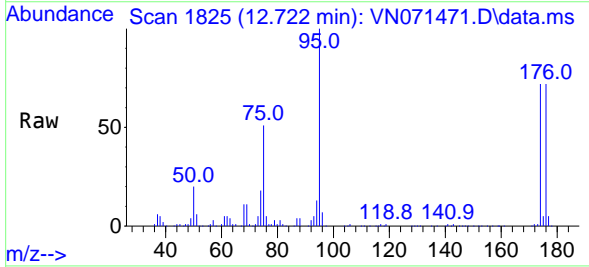
Instrument : MSVOA_N
 ClientSampleId : EB-20220321



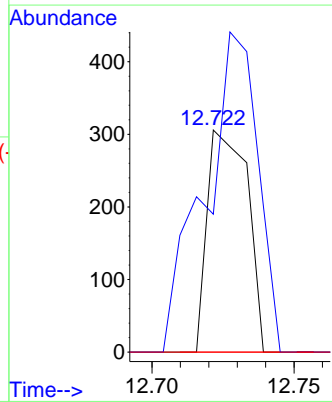
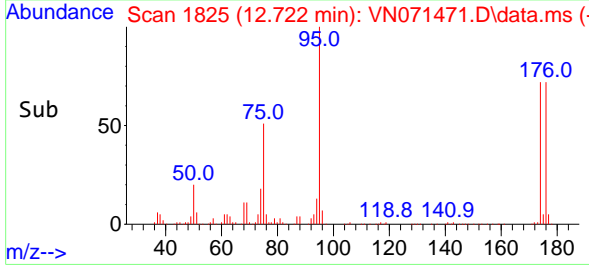
Tgt Ion:152 Resp: 387540
 Ion Ratio Lower Upper
 152 100
 115 59.1 27.5 82.5
 150 157.8 0.0 344.4

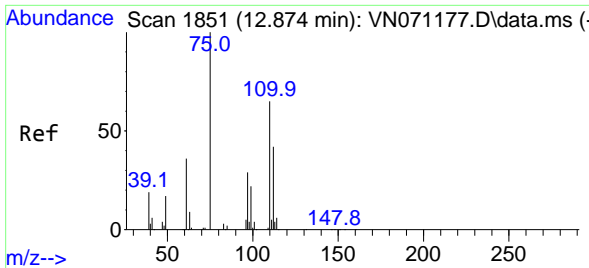


#75
 1,1,2,2-Tetrachloroethane
 Concen: Below Cal
 RT: 12.722 min Scan# 1825
 Delta R.T. -0.099 min
 Lab File: VN071471.D
 Acq: 22 Mar 2022 16:57



Tgt Ion: 83 Resp: 300
 Ion Ratio Lower Upper
 83 100
 131 190.7 5.5 16.5#
 85 0.0 32.4 97.2#

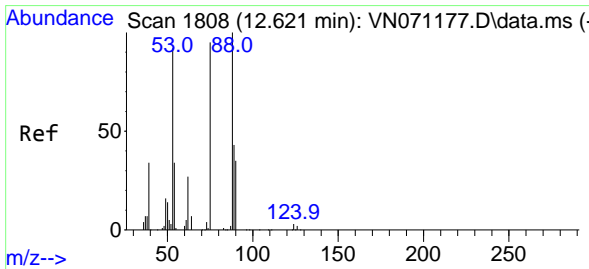
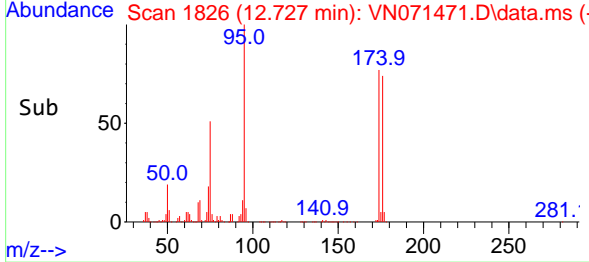
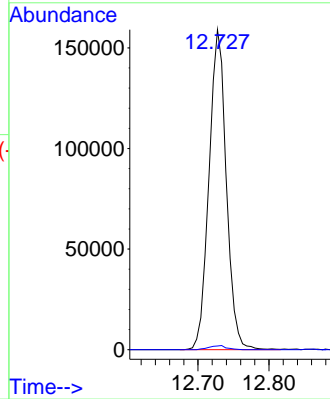
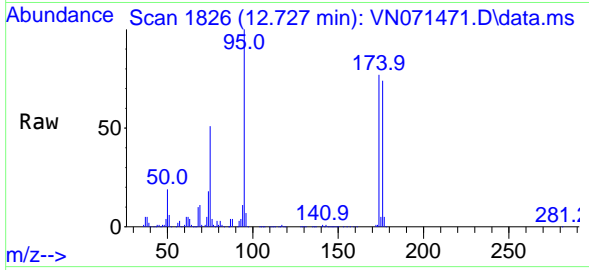




#76
 1,2,3-Trichloropropane
 Concen: 27.425 ug/l
 RT: 12.727 min Scan# 1826
 Delta R.T. -0.147 min
 Lab File: VN071471.D
 Acq: 22 Mar 2022 16:57

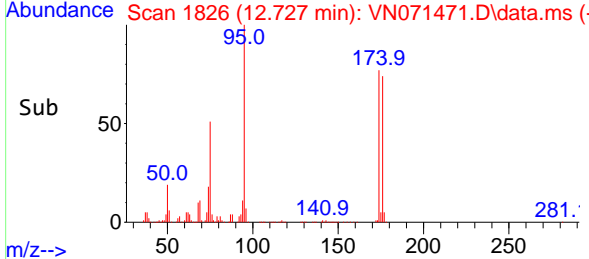
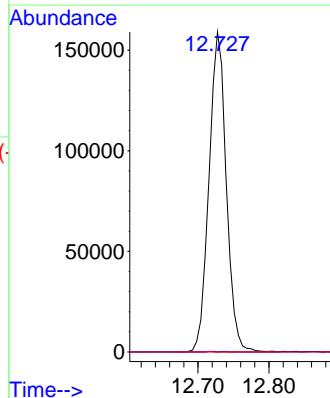
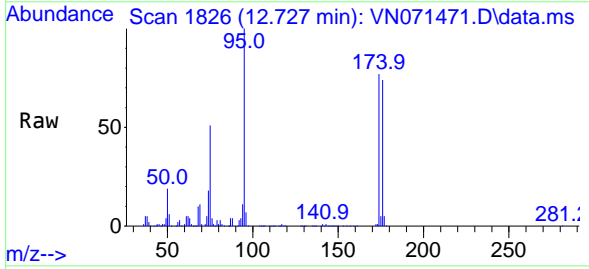
Instrument : MSVOA_N
 ClientSampleId : EB-20220321

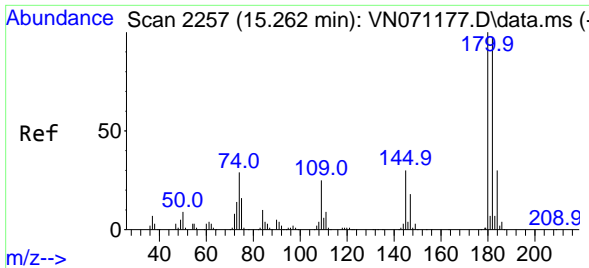
Tgt Ion: 75 Resp: 269561
 Ion Ratio Lower Upper
 75 100
 77 1.3 82.6 247.8#



#81
 trans-1,4-Dichloro-2-butene
 Concen: 75.191 ug/l
 RT: 12.727 min Scan# 1826
 Delta R.T. 0.106 min
 Lab File: VN071471.D
 Acq: 22 Mar 2022 16:57

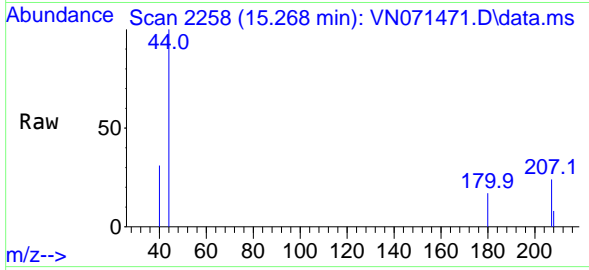
Tgt Ion: 75 Resp: 269561
 Ion Ratio Lower Upper
 75 100
 53 0.1 90.5 135.7#
 89 0.0 38.2 57.4#



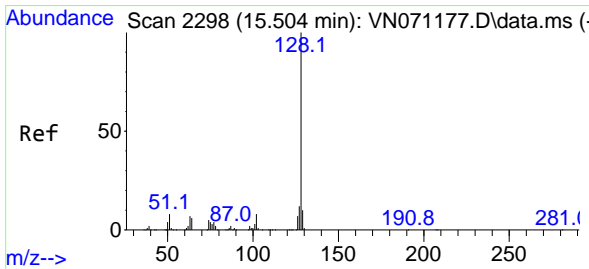
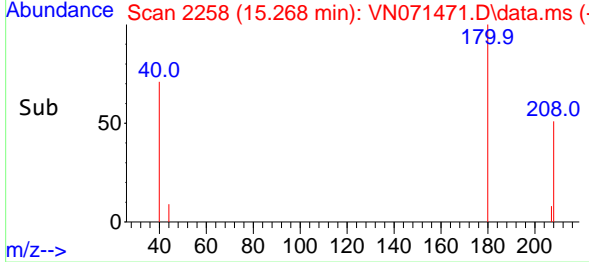
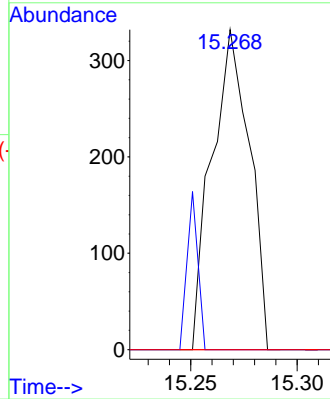


#93
 1,2,4-Trichlorobenzene
 Concen: 3.050 ug/l
 RT: 15.268 min Scan# 21
 Delta R.T. 0.006 min
 Lab File: VN071471.D
 Acq: 22 Mar 2022 16:57

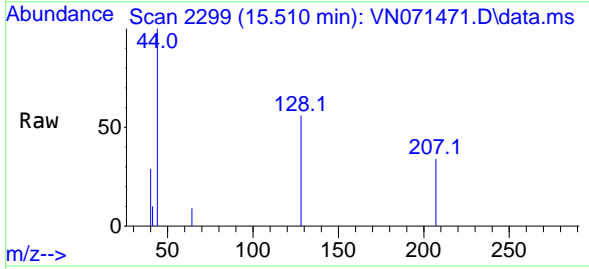
Instrument :
 MSVOA_N
 ClientSampleId :
 EB-20220321



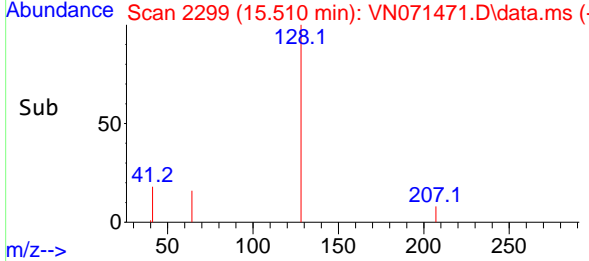
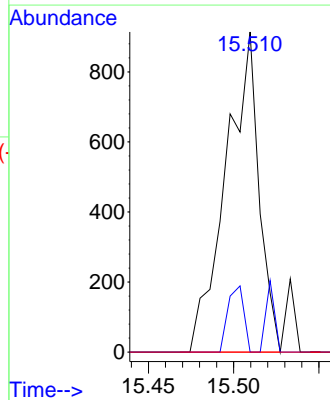
Tgt Ion:180 Resp: 410
 Ion Ratio Lower Upper
 180 100
 182 14.1 48.3 144.9#
 145 0.0 14.5 43.5#

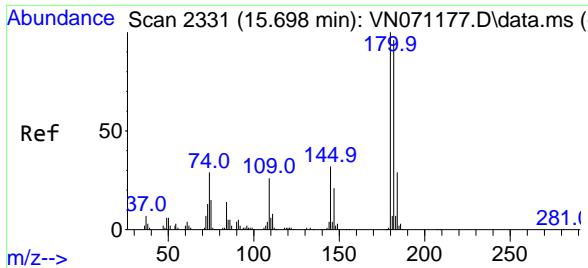


#95
 Naphthalene
 Concen: 5.130 ug/l
 RT: 15.510 min Scan# 2299
 Delta R.T. 0.006 min
 Lab File: VN071471.D
 Acq: 22 Mar 2022 16:57



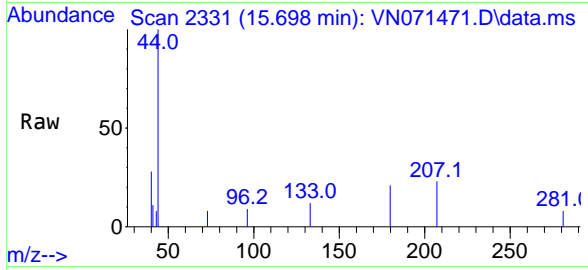
Tgt Ion:128 Resp: 1232
 Ion Ratio Lower Upper
 128 100
 127 10.0 10.5 15.7#
 129 0.0 8.7 13.1#





#96
 1,2,3-Trichlorobenzene
 Concen: 2.768 ug/l
 RT: 15.698 min Scan# 21
 Delta R.T. -0.000 min
 Lab File: VN071471.D
 Acq: 22 Mar 2022 16:57

Instrument :
 MSVOA_N
 ClientSampleId :
 EB-20220321



Tgt Ion:180 Resp: 233

Ion	Ratio	Lower	Upper
180	100		
182	27.5	47.4	142.2#
145	0.0	15.0	45.1#

