

Data Path : Z:\voasrv\HPCHEM1\MSVOA_N\Data\VN032222\
 Data File : VN071474.D
 Acq On : 22 Mar 2022 18:09
 Operator : JC\MD
 Sample : N2031-07
 Misc : 5.0mL/MSVOA_N/WATER
 ALS Vial : 20 Sample Multiplier: 1

Instrument :
 MSVOA_N
 ClientSampleId :
 TRIP-BLANK

Quant Time: Mar 23 07:10:12 2022
 Quant Method : Z:\voasrv\HPCHEM1\MSVOA_N\methods\82N030722W.M
 Quant Title : SW846 8260
 QLast Update : Tue Mar 08 06:52:46 2022
 Response via : Initial Calibration

Compound	R.T.	QIon	Response	Conc	Units	Dev(Min)

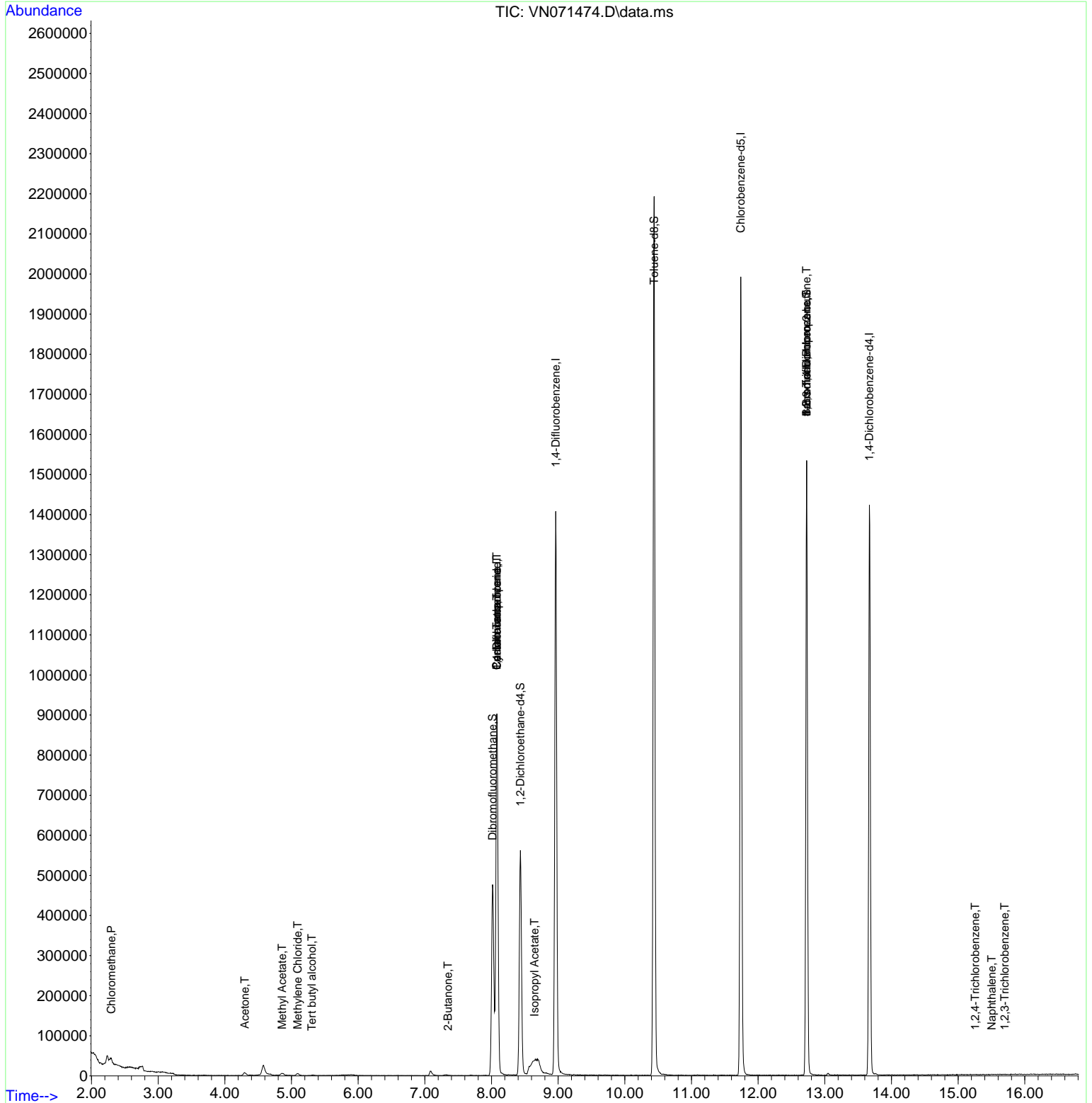
Internal Standards						
1) Pentafluorobenzene	8.080	168	688010	50.000	ug/l	0.00
34) 1,4-Difluorobenzene	8.963	114	1197766	50.000	ug/l	0.00
63) Chlorobenzene-d5	11.739	117	1132720	50.000	ug/l	0.00
72) 1,4-Dichlorobenzene-d4	13.668	152	391416	50.000	ug/l	0.00
System Monitoring Compounds						
33) 1,2-Dichloroethane-d4	8.433	65	462654	49.065	ug/l	0.00
Spiked Amount	50.000	Range	61 - 141	Recovery	=	98.120%
35) Dibromofluoromethane	8.016	113	350275	46.343	ug/l	0.00
Spiked Amount	50.000	Range	69 - 133	Recovery	=	92.680%
50) Toluene-d8	10.439	98	1474990	48.468	ug/l	0.00
Spiked Amount	50.000	Range	65 - 126	Recovery	=	96.940%
62) 4-Bromofluorobenzene	12.727	95	529526	51.385	ug/l	0.00
Spiked Amount	50.000	Range	58 - 135	Recovery	=	102.780%
Target Compounds						
					Qvalue	
3) Chloromethane	2.298	50	3218	0.283	ug/l #	85
5) Bromomethane	2.840	94	367	Below Cal	#	23
11) Tert butyl alcohol	5.304	59	862	0.465	ug/l #	71
16) Acetone	4.298	43	10536	2.296	ug/l	96
18) Methyl Acetate	4.857	43	12375	1.465	ug/l	97
20) Methylene Chloride	5.092	84	3371	0.781	ug/l #	68
25) 2-Butanone	7.345	43	1640	0.222	ug/l #	48
31) Cyclohexane	8.080	56	14317	0.951	ug/l #	9
36) 1,1-Dichloropropene	8.080	75	54606	4.509	ug/l #	49
38) Carbon Tetrachloride	8.080	117	70204	5.993	ug/l #	17
43) Isopropyl Acetate	8.645	43	61077	2.451	ug/l #	57
71) Bromoform	12.727	173	3227	0.476	ug/l #	1
75) 1,1,2,2-Tetrachloroethane	12.721	83	378	Below Cal	#	1
76) 1,2,3-Trichloropropane	12.727	75	275400	27.776	ug/l #	1
81) trans-1,4-Dichloro-2-b...	12.727	75	275400	76.059	ug/l #	5
93) 1,2,4-Trichlorobenzene	15.256	180	78	3.001	ug/l #	12
95) Naphthalene	15.503	128	602	5.098	ug/l #	69
96) 1,2,3-Trichlorobenzene	15.698	180	126	2.751	ug/l #	12

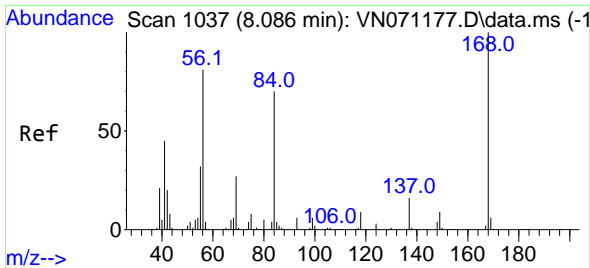
(#) = qualifier out of range (m) = manual integration (+) = signals summed

Data Path : Z:\voasrv\HPCHEM1\MSVOA_N\Data\VN032222\
 Data File : VN071474.D
 Acq On : 22 Mar 2022 18:09
 Operator : JC\MD
 Sample : N2031-07
 Misc : 5.0mL/MSVOA_N/WATER
 ALS Vial : 20 Sample Multiplier: 1

Instrument :
 MSVOA_N
ClientSampleId :
 TRIP-BLANK

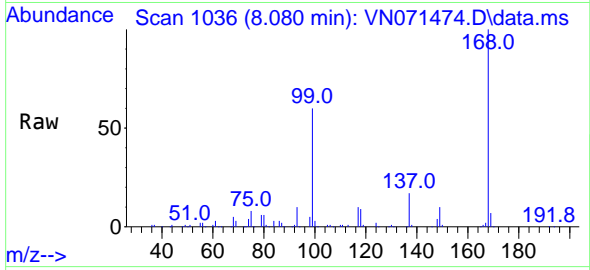
Quant Time: Mar 23 07:10:12 2022
 Quant Method : Z:\voasrv\HPCHEM1\MSVOA_N\methods\82N030722W.M
 Quant Title : SW846 8260
 QLast Update : Tue Mar 08 06:52:46 2022
 Response via : Initial Calibration



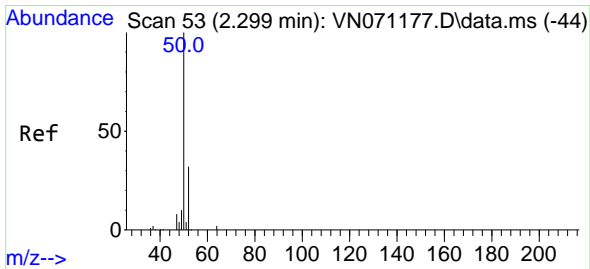
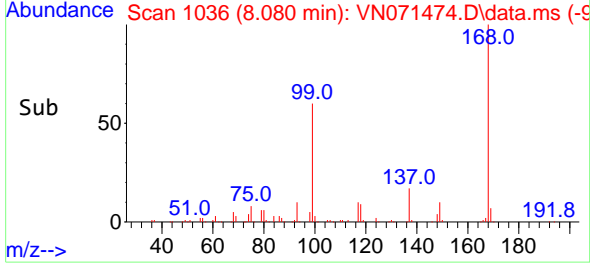
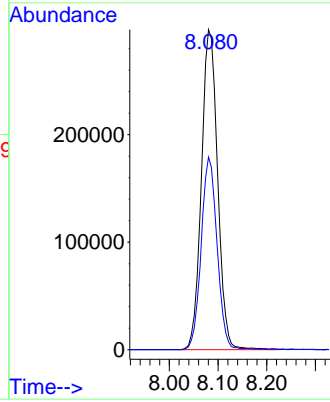


#1
 Pentafluorobenzene
 Concen: 50.000 ug/l
 RT: 8.080 min Scan# 1037
 Delta R.T. -0.006 min
 Lab File: VN071474.D
 Acq: 22 Mar 2022 18:09

Instrument :
 MSVOA_N
 ClientSampleId :
 TRIP-BLANK

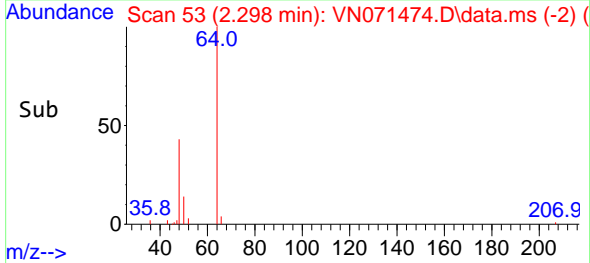
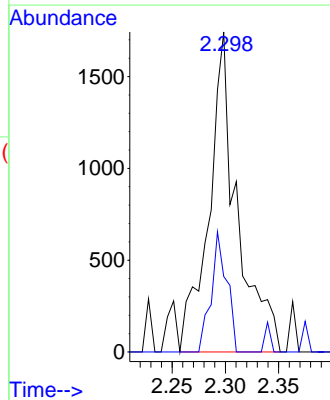
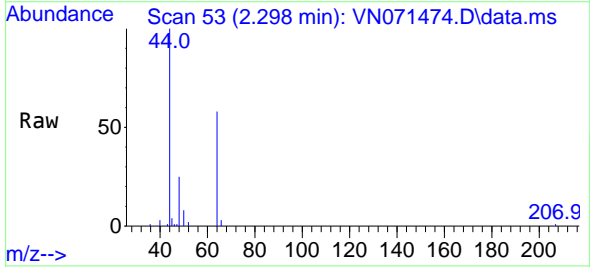


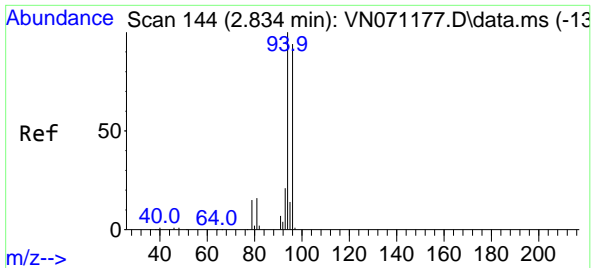
Tgt Ion:168 Resp: 688010
 Ion Ratio Lower Upper
 168 100
 99 60.2 41.3 61.9



#3
 Chloromethane
 Concen: 0.283 ug/l
 RT: 2.298 min Scan# 53
 Delta R.T. -0.001 min
 Lab File: VN071474.D
 Acq: 22 Mar 2022 18:09

Tgt Ion: 50 Resp: 3218
 Ion Ratio Lower Upper
 50 100
 52 23.6 25.4 38.0#

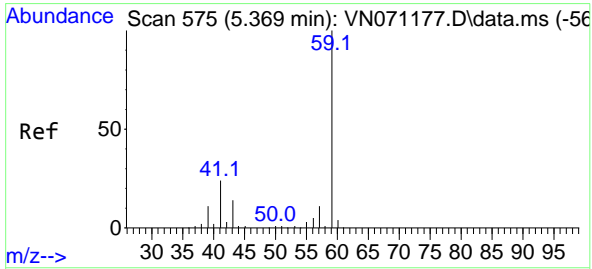
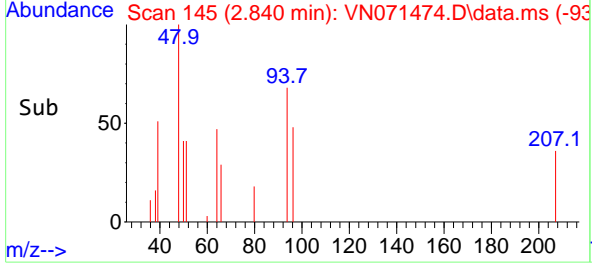
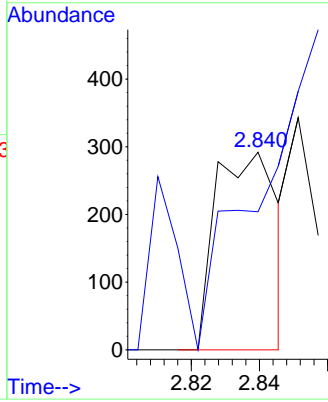
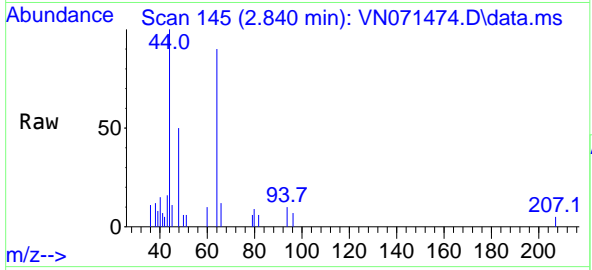




#5
 Bromomethane
 Concen: Below Cal
 RT: 2.840 min Scan# 14
 Delta R.T. 0.006 min
 Lab File: VN071474.D
 Acq: 22 Mar 2022 18:09

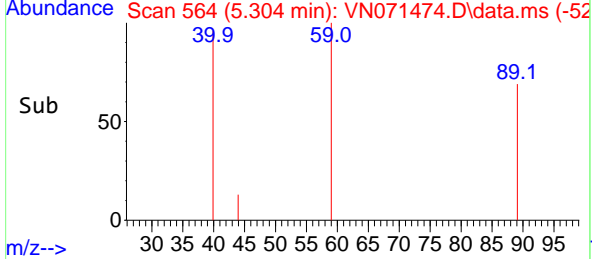
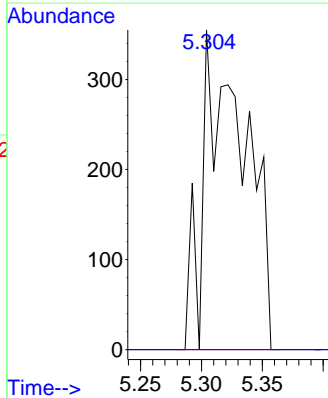
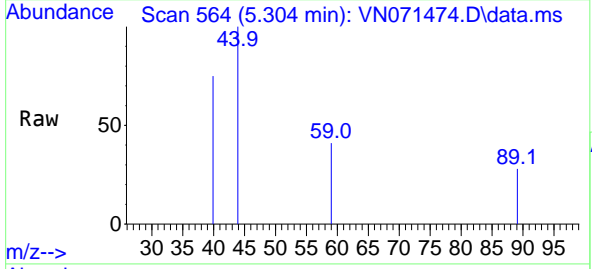
Instrument :
 MSVOA_N
 ClientSampleId :
 TRIP-BLANK

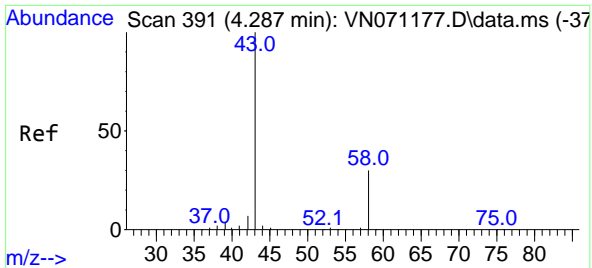
Tgt Ion: 94 Resp: 367
 Ion Ratio Lower Upper
 94 100
 96 18.5 73.8 110.8#



#11
 Tert butyl alcohol
 Concen: 0.465 ug/l
 RT: 5.304 min Scan# 564
 Delta R.T. -0.065 min
 Lab File: VN071474.D
 Acq: 22 Mar 2022 18:09

Tgt Ion: 59 Resp: 862
 Ion Ratio Lower Upper
 59 100
 57 0.0 8.7 13.1#

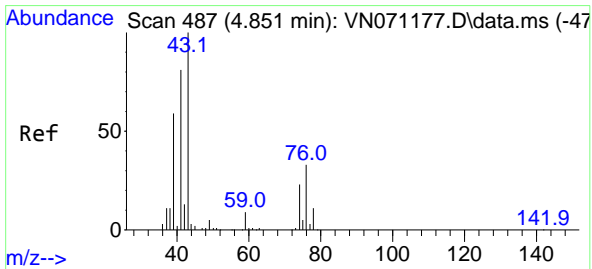
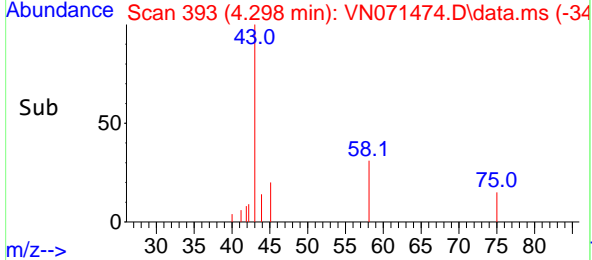
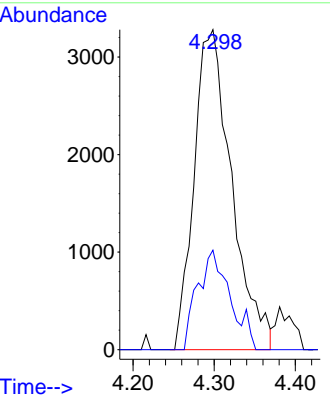
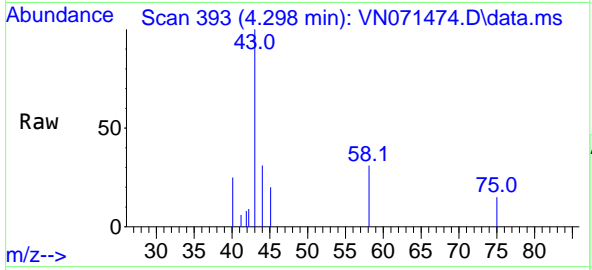




#16
 Acetone
 Concen: 2.296 ug/l
 RT: 4.298 min Scan# 391
 Delta R.T. 0.012 min
 Lab File: VN071474.D
 Acq: 22 Mar 2022 18:09

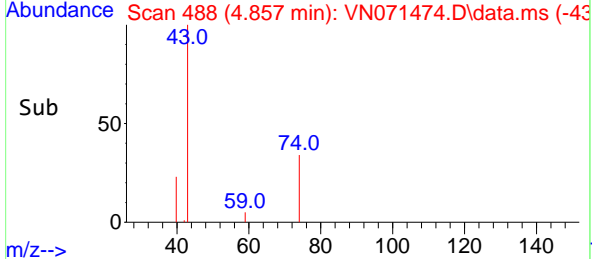
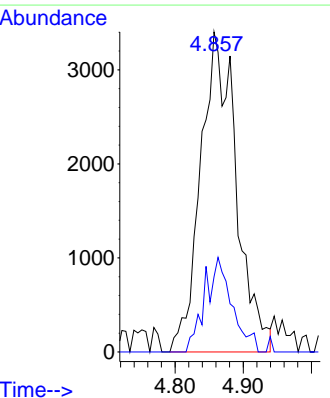
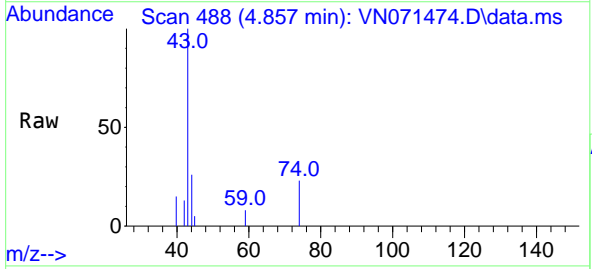
Instrument : MSVOA_N
 ClientSampleId : TRIP-BLANK

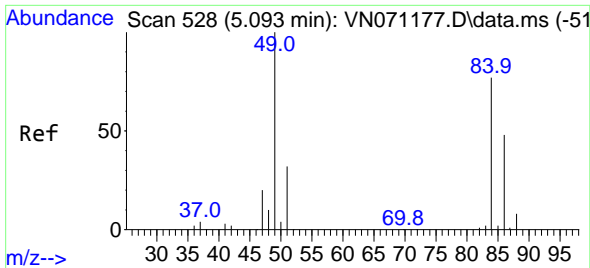
Tgt Ion: 43 Resp: 10536
 Ion Ratio Lower Upper
 43 100
 58 31.1 23.1 34.7



#18
 Methyl Acetate
 Concen: 1.465 ug/l
 RT: 4.857 min Scan# 488
 Delta R.T. 0.006 min
 Lab File: VN071474.D
 Acq: 22 Mar 2022 18:09

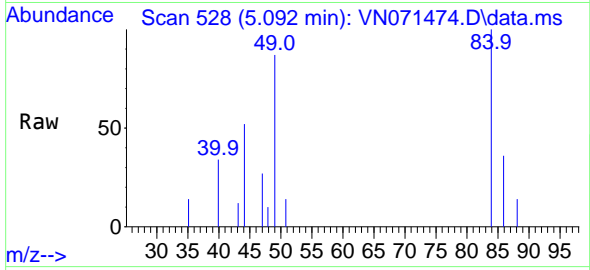
Tgt Ion: 43 Resp: 12375
 Ion Ratio Lower Upper
 43 100
 74 22.6 19.4 29.2





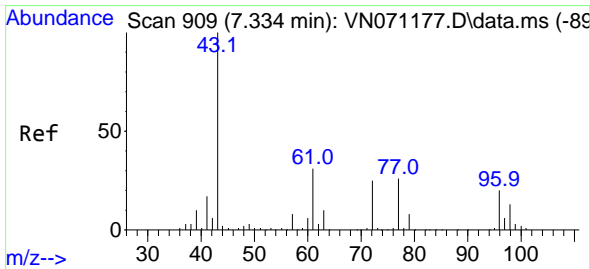
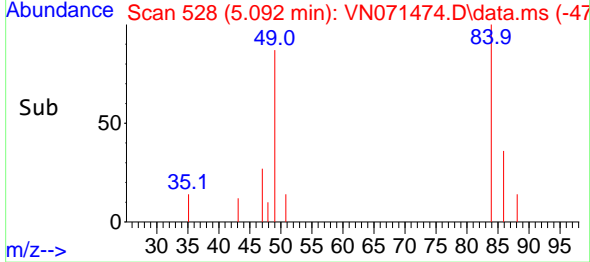
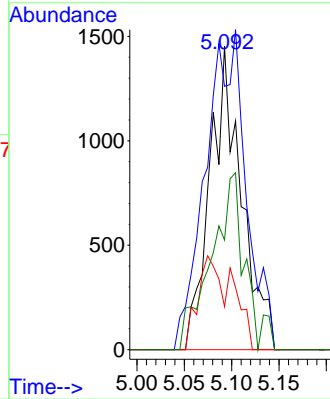
#20
 Methylene Chloride
 Concen: 0.781 ug/l
 RT: 5.092 min Scan# 511
 Delta R.T. -0.001 min
 Lab File: VN071474.D
 Acq: 22 Mar 2022 18:09

Instrument :
 MSVOA_N
 ClientSampleId :
 TRIP-BLANK



Tgt Ion: 84 Resp: 3371

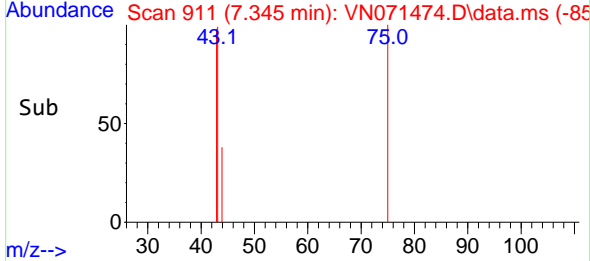
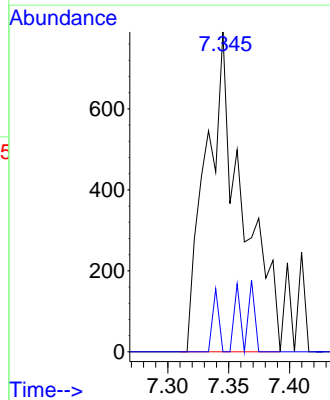
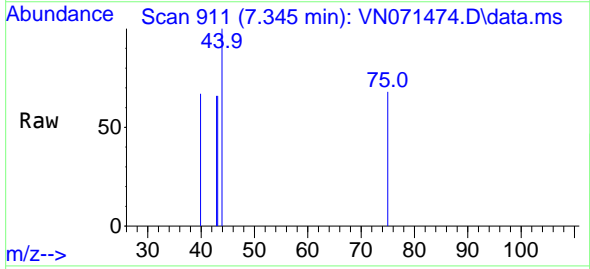
Ion	Ratio	Lower	Upper
84	100		
49	86.8	93.5	140.3#
51	14.2	29.4	44.2#
86	36.2	53.0	79.4#

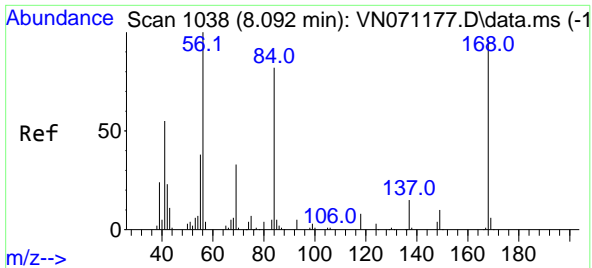


#25
 2-Butanone
 Concen: 0.222 ug/l
 RT: 7.345 min Scan# 911
 Delta R.T. 0.012 min
 Lab File: VN071474.D
 Acq: 22 Mar 2022 18:09

Tgt Ion: 43 Resp: 1640

Ion	Ratio	Lower	Upper
43	100		
72	0.0	21.7	32.5#



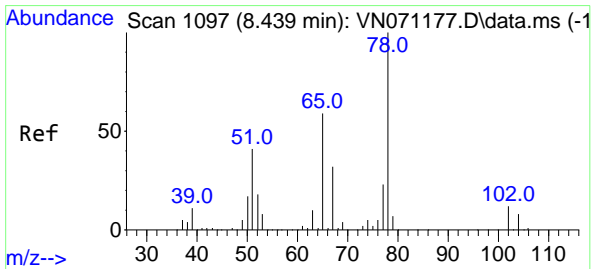
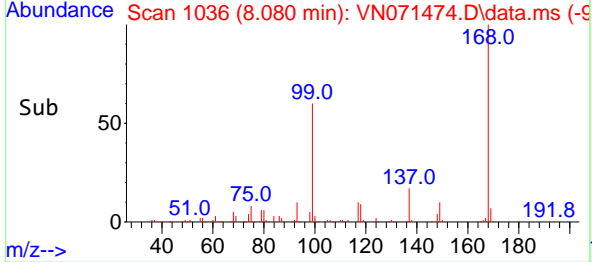
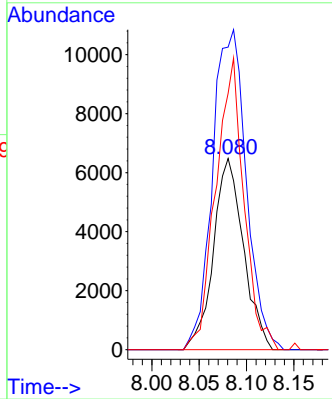
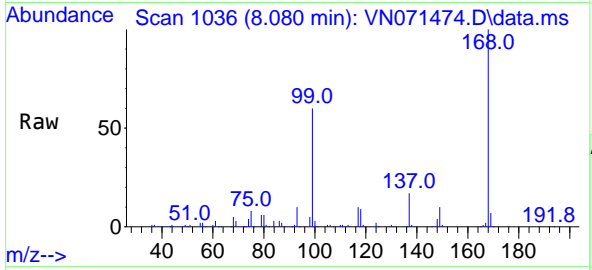


#31
 Cyclohexane
 Concen: 0.951 ug/l
 RT: 8.080 min Scan# 1036
 Delta R.T. -0.012 min
 Lab File: VN071474.D
 Acq: 22 Mar 2022 18:09

Instrument : MSVOA_N
 ClientSampleId : TRIP-BLANK

Tgt Ion: 56 Resp: 14317

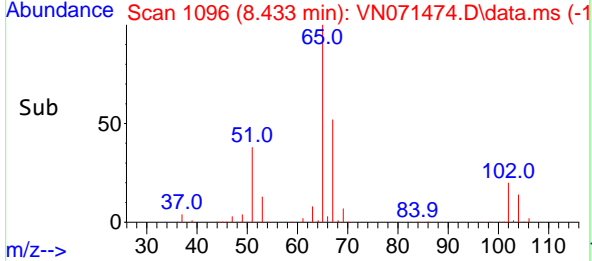
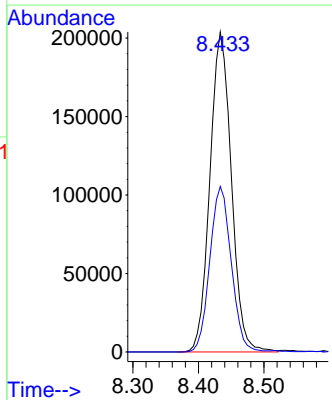
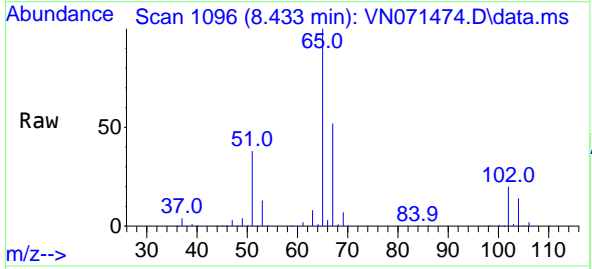
Ion	Ratio	Lower	Upper
56	100		
69	158.3	27.1	40.7#
84	134.1	73.4	110.0#

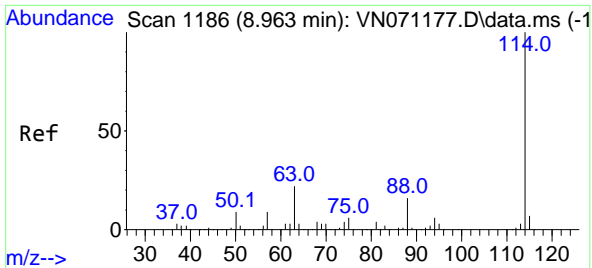


#33
 1,2-Dichloroethane-d4
 Concen: 49.065 ug/l
 RT: 8.433 min Scan# 1096
 Delta R.T. -0.006 min
 Lab File: VN071474.D
 Acq: 22 Mar 2022 18:09

Tgt Ion: 65 Resp: 462654

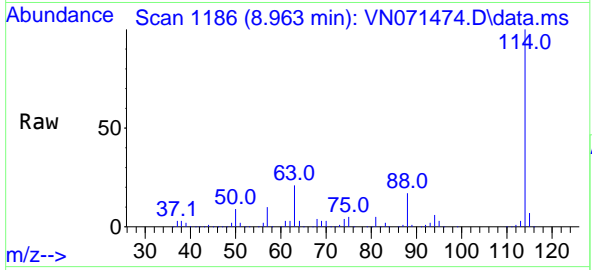
Ion	Ratio	Lower	Upper
65	100		
67	51.5	0.0	103.0





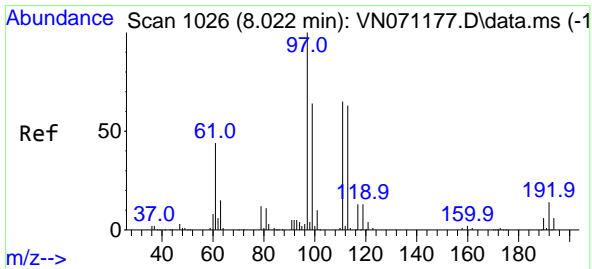
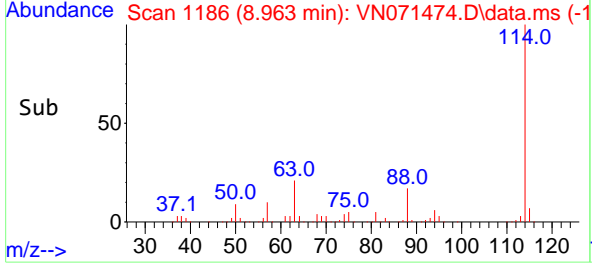
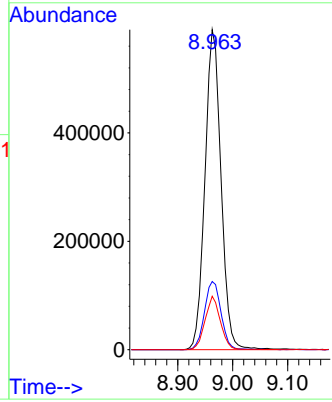
#34
 1,4-Difluorobenzene
 Concen: 50.000 ug/l
 RT: 8.963 min Scan# 1186
 Delta R.T. -0.000 min
 Lab File: VN071474.D
 Acq: 22 Mar 2022 18:09

Instrument : MSVOA_N
 ClientSampleId : TRIP-BLANK

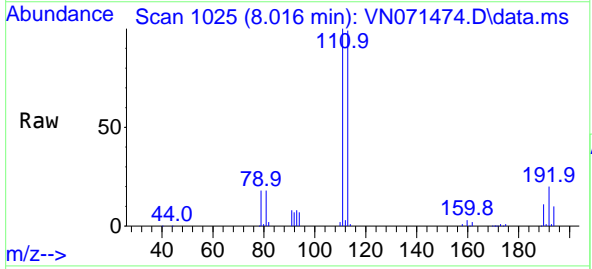


Tgt Ion:114 Resp: 1197766

Ion	Ratio	Lower	Upper
114	100		
63	21.3	0.0	37.8
88	16.7	0.0	27.4

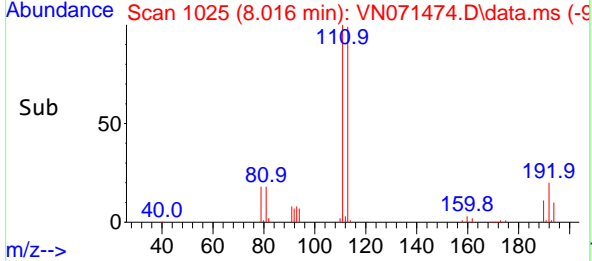
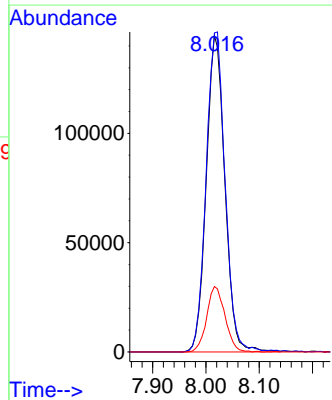


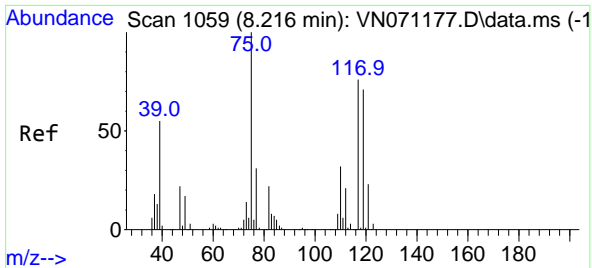
#35
 Dibromofluoromethane
 Concen: 46.343 ug/l
 RT: 8.016 min Scan# 1025
 Delta R.T. -0.006 min
 Lab File: VN071474.D
 Acq: 22 Mar 2022 18:09



Tgt Ion:113 Resp: 350275

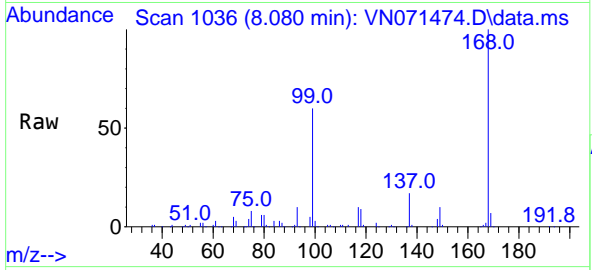
Ion	Ratio	Lower	Upper
113	100		
111	103.3	82.2	123.2
192	20.3	16.9	25.3



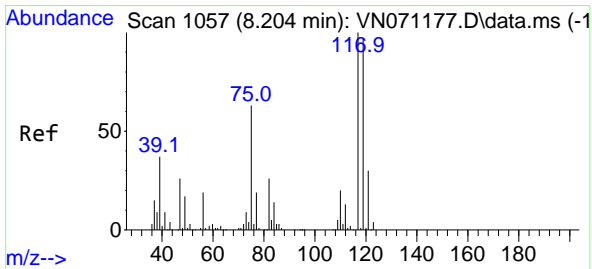
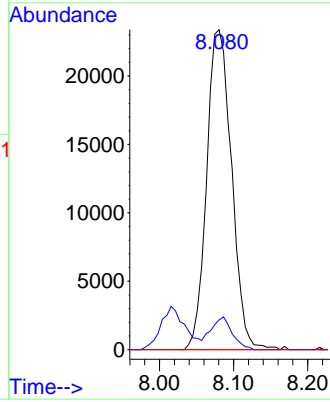
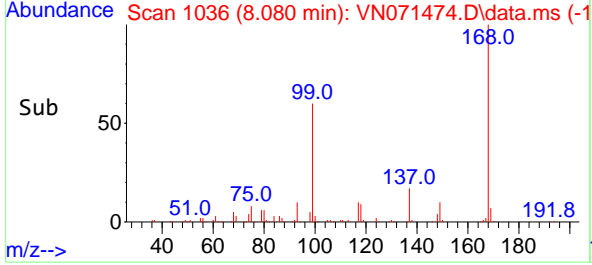


#36
 1,1-Dichloropropene
 Concen: 4.509 ug/l
 RT: 8.080 min Scan# 1036
 Delta R.T. -0.135 min
 Lab File: VN071474.D
 Acq: 22 Mar 2022 18:09

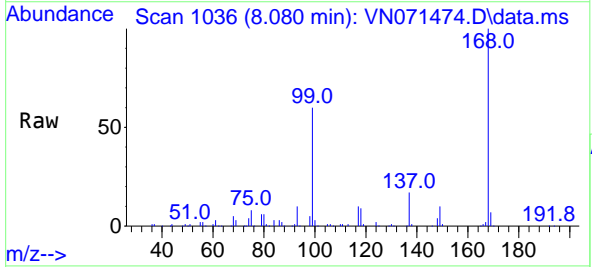
Instrument : MSVOA_N
 ClientSampleId : TRIP-BLANK



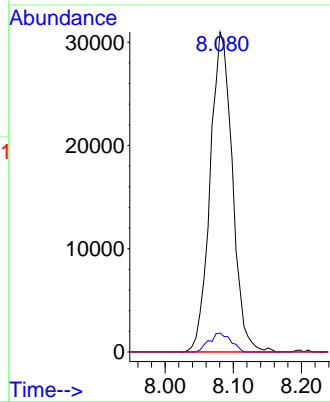
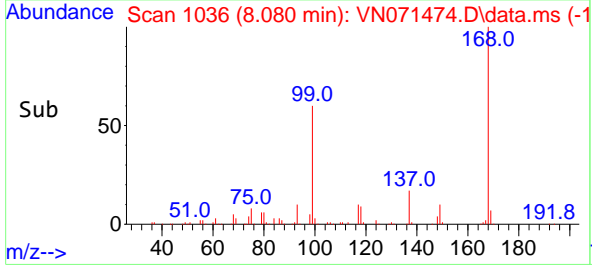
Tgt Ion: 75 Resp: 54606
 Ion Ratio Lower Upper
 75 100
 110 8.8 18.4 55.2#
 77 0.0 24.4 36.6#

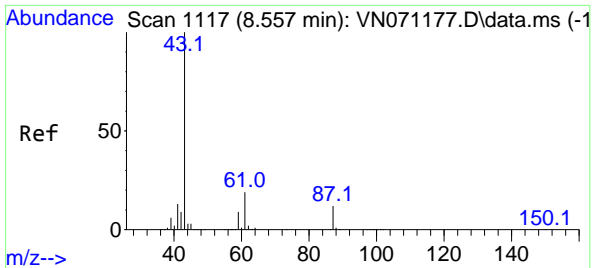


#38
 Carbon Tetrachloride
 Concen: 5.993 ug/l
 RT: 8.080 min Scan# 1036
 Delta R.T. -0.124 min
 Lab File: VN071474.D
 Acq: 22 Mar 2022 18:09



Tgt Ion: 117 Resp: 70204
 Ion Ratio Lower Upper
 117 100
 119 5.9 76.1 114.1#
 121 0.0 24.2 36.2#



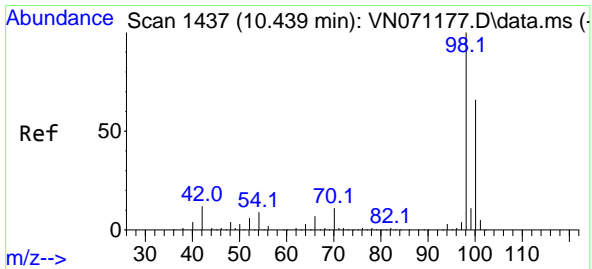
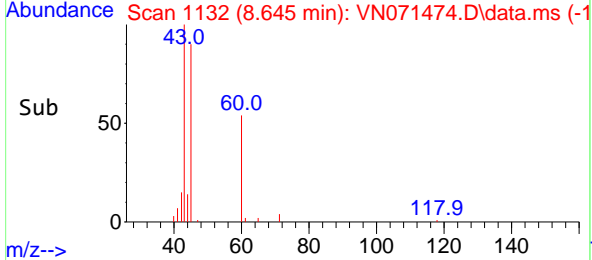
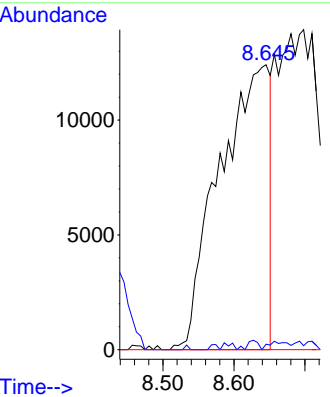
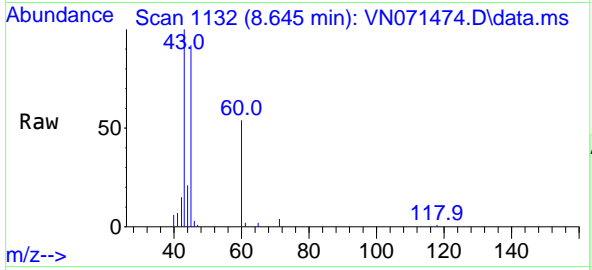


#43
 Isopropyl Acetate
 Concen: 2.451 ug/l
 RT: 8.645 min Scan# 1117
 Delta R.T. 0.088 min
 Lab File: VN071474.D
 Acq: 22 Mar 2022 18:09

Instrument : MSVOA_N
 ClientSampleId : TRIP-BLANK

Tgt Ion: 43 Resp: 61077

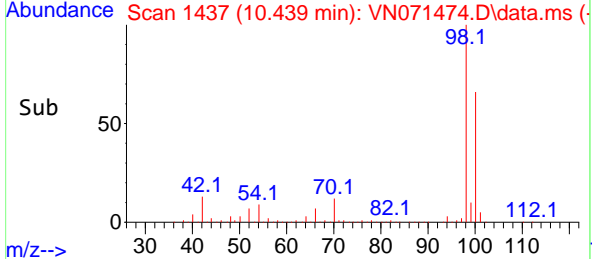
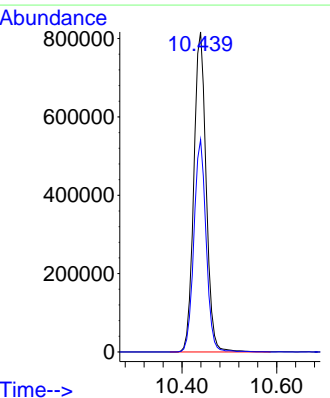
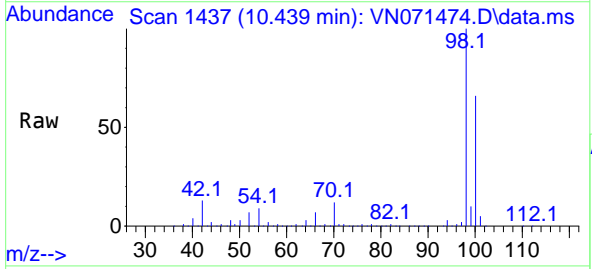
Ion	Ratio	Lower	Upper
43	100		
61	1.1	20.4	30.6#
87	0.0	11.2	16.8#

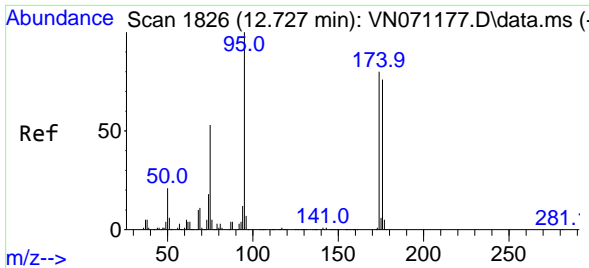


#50
 Toluene-d8
 Concen: 48.468 ug/l
 RT: 10.439 min Scan# 1437
 Delta R.T. 0.000 min
 Lab File: VN071474.D
 Acq: 22 Mar 2022 18:09

Tgt Ion: 98 Resp: 1474990

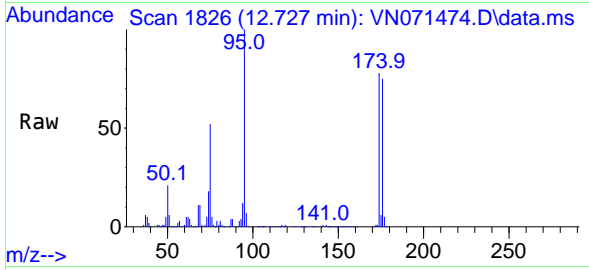
Ion	Ratio	Lower	Upper
98	100		
100	65.5	50.4	75.6





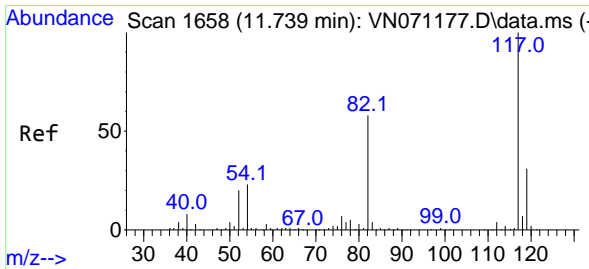
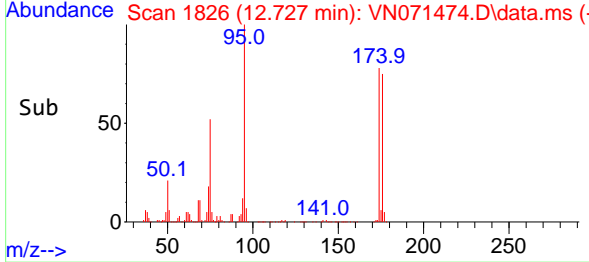
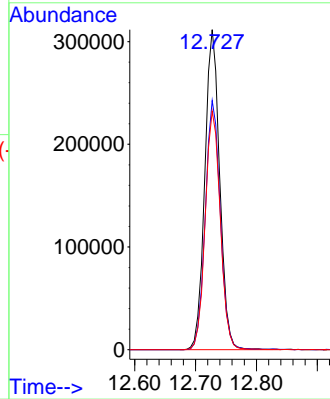
#62
 4-Bromofluorobenzene
 Concen: 51.385 ug/l
 RT: 12.727 min Scan# 1826
 Delta R.T. 0.000 min
 Lab File: VN071474.D
 Acq: 22 Mar 2022 18:09

Instrument : MSVOA_N
 ClientSampleId : TRIP-BLANK



Tgt Ion: 95 Resp: 529526

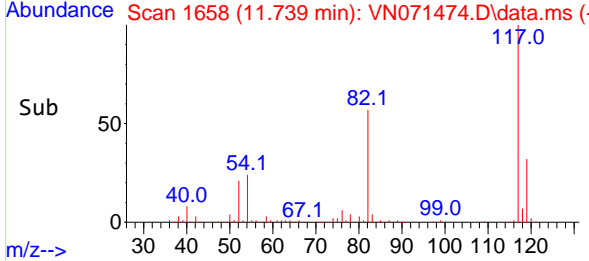
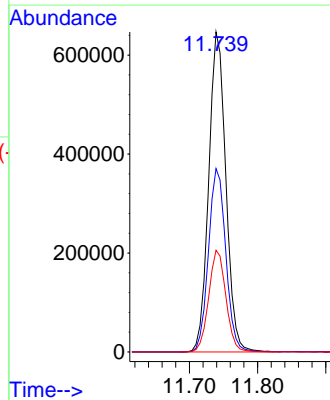
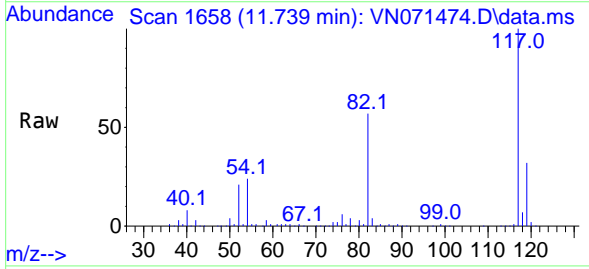
Ion	Ratio	Lower	Upper
95	100		
174	78.5	0.0	187.2
176	75.7	0.0	181.4

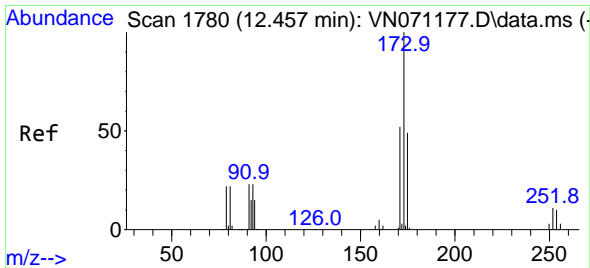


#63
 Chlorobenzene-d5
 Concen: 50.000 ug/l
 RT: 11.739 min Scan# 1658
 Delta R.T. -0.000 min
 Lab File: VN071474.D
 Acq: 22 Mar 2022 18:09

Tgt Ion: 117 Resp: 1132720

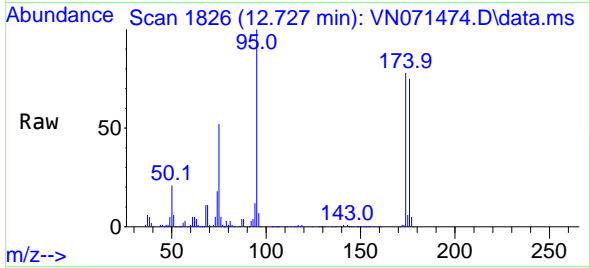
Ion	Ratio	Lower	Upper
117	100		
82	57.3	42.4	63.6
119	31.8	25.4	38.2



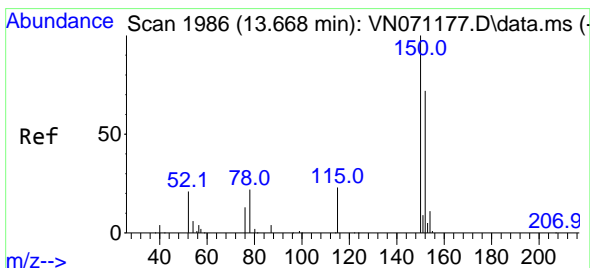
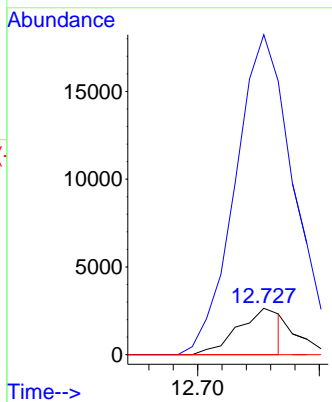
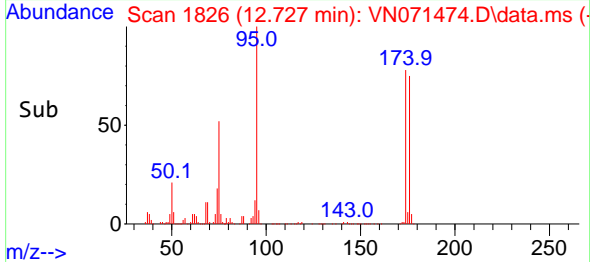


#71
 Bromoform
 Concen: 0.476 ug/l
 RT: 12.727 min Scan# 1826
 Delta R.T. 0.270 min
 Lab File: VN071474.D
 Acq: 22 Mar 2022 18:09

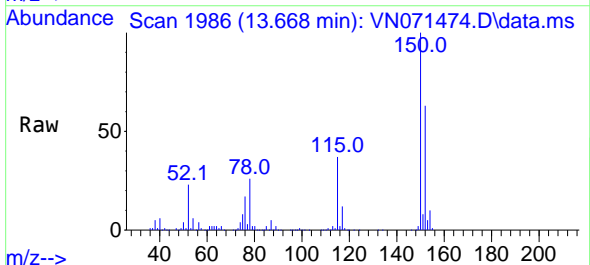
Instrument :
 MSVOA_N
 ClientSampleId :
 TRIP-BLANK



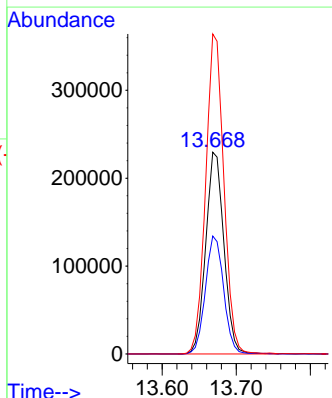
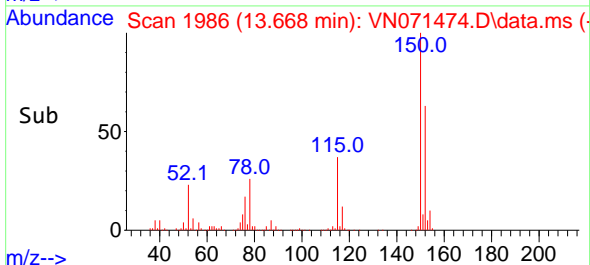
Tgt Ion:173 Resp: 3227
 Ion Ratio Lower Upper
 173 100
 175 726.3 24.2 72.6#
 254 0.0 0.0 0.0

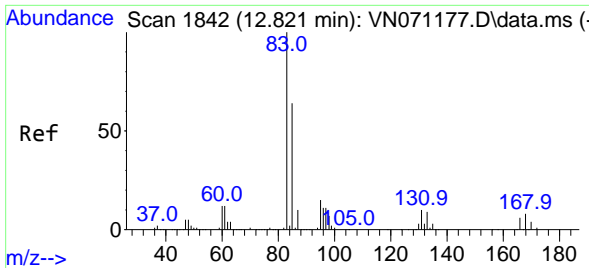


#72
 1,4-Dichlorobenzene-d4
 Concen: 50.000 ug/l
 RT: 13.668 min Scan# 1986
 Delta R.T. 0.000 min
 Lab File: VN071474.D
 Acq: 22 Mar 2022 18:09



Tgt Ion:152 Resp: 391416
 Ion Ratio Lower Upper
 152 100
 115 58.7 27.5 82.5
 150 158.4 0.0 344.4



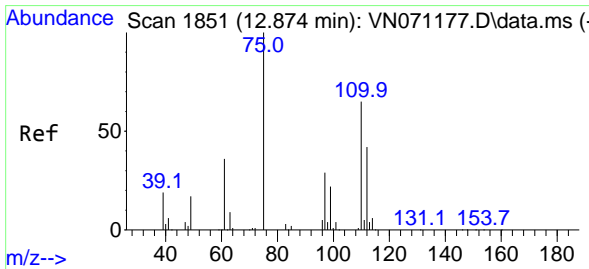
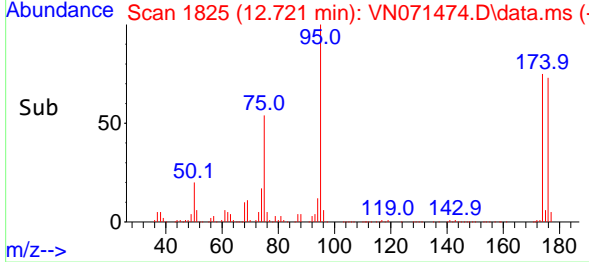
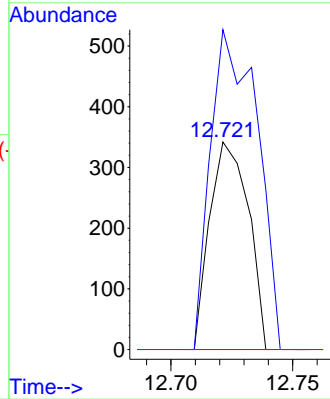
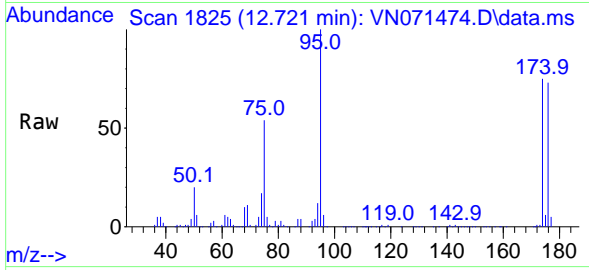


#75
 1,1,2,2-Tetrachloroethane
 Concen: Below Cal
 RT: 12.721 min Scan# 1842
 Delta R.T. -0.100 min
 Lab File: VN071474.D
 Acq: 22 Mar 2022 18:09

Instrument : MSVOA_N
 ClientSampleId : TRIP-BLANK

Tgt Ion: 83 Resp: 378

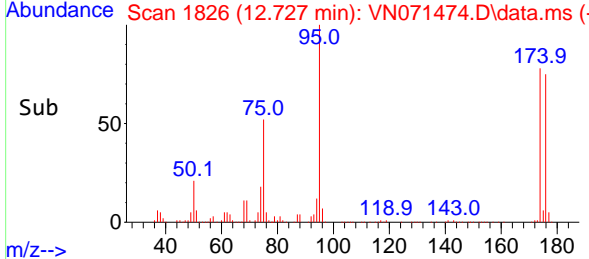
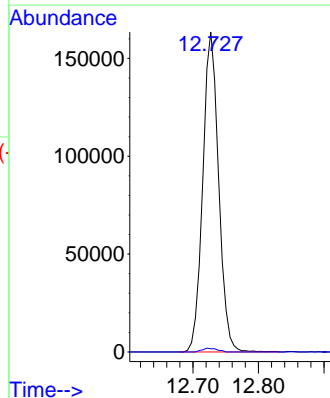
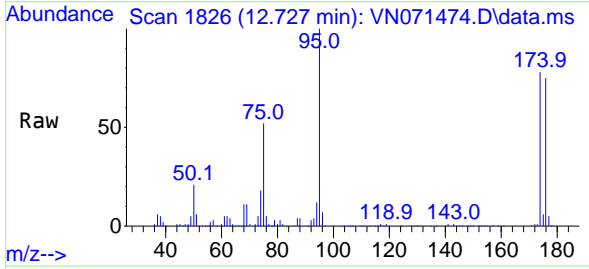
Ion	Ratio	Lower	Upper
83	100		
131	186.2	5.5	16.5#
85	0.0	32.4	97.2#

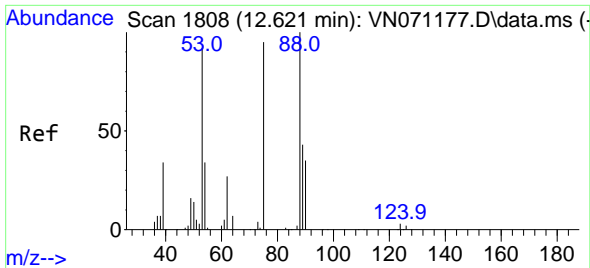


#76
 1,2,3-Trichloropropane
 Concen: 27.776 ug/l
 RT: 12.727 min Scan# 1826
 Delta R.T. -0.147 min
 Lab File: VN071474.D
 Acq: 22 Mar 2022 18:09

Tgt Ion: 75 Resp: 275400

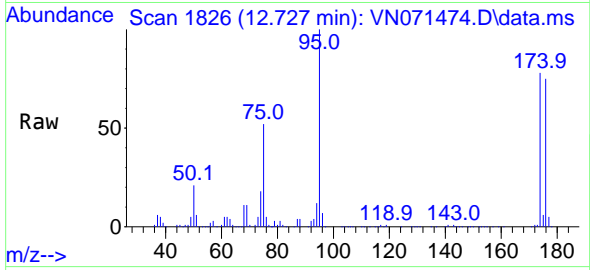
Ion	Ratio	Lower	Upper
75	100		
77	1.1	82.6	247.8#



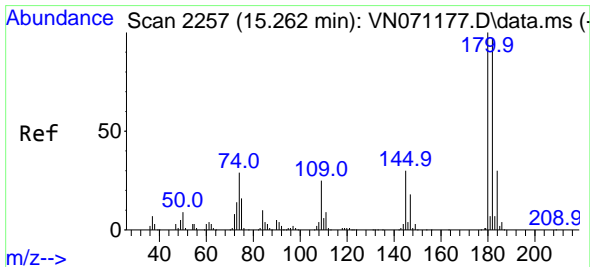
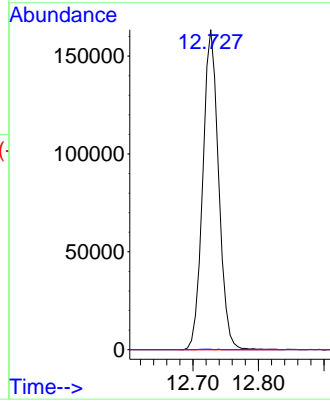
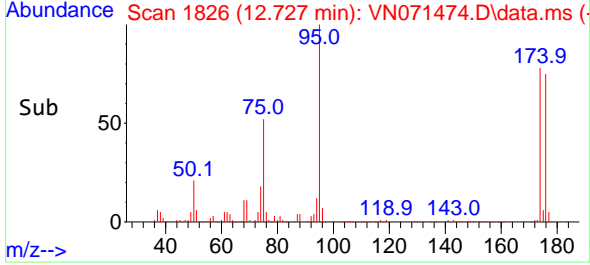


#81
 trans-1,4-Dichloro-2-butene
 Concen: 76.059 ug/l
 RT: 12.727 min Scan# 1808
 Delta R.T. 0.106 min
 Lab File: VN071474.D
 Acq: 22 Mar 2022 18:09

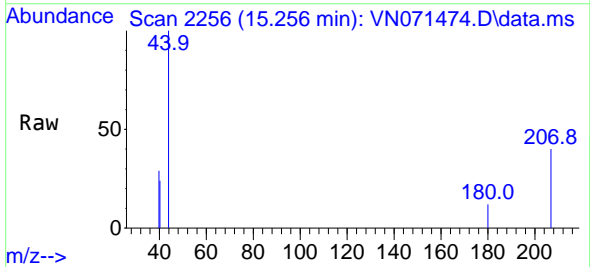
Instrument : MSVOA_N
 ClientSampleId : TRIP-BLANK



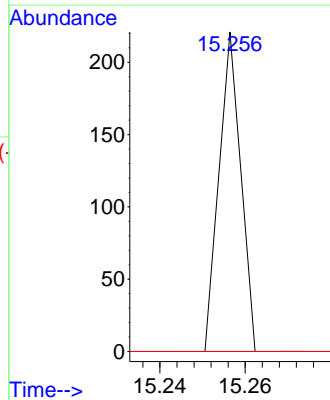
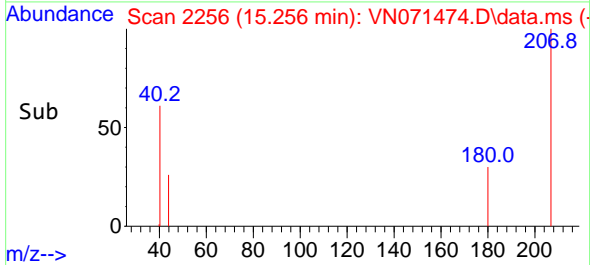
Tgt Ion: 75 Resp: 275400
 Ion Ratio Lower Upper
 75 100
 53 0.1 90.5 135.7#
 89 0.0 38.2 57.4#

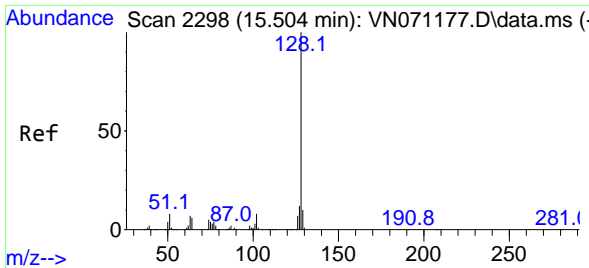


#93
 1,2,4-Trichlorobenzene
 Concen: 3.001 ug/l
 RT: 15.256 min Scan# 2256
 Delta R.T. -0.006 min
 Lab File: VN071474.D
 Acq: 22 Mar 2022 18:09



Tgt Ion:180 Resp: 78
 Ion Ratio Lower Upper
 180 100
 182 0.0 48.3 144.9#
 145 0.0 14.5 43.5#



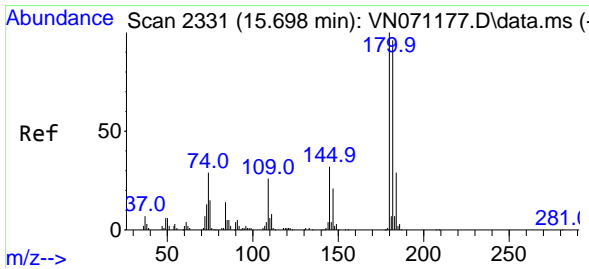
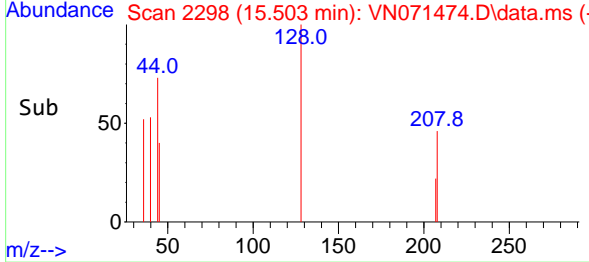
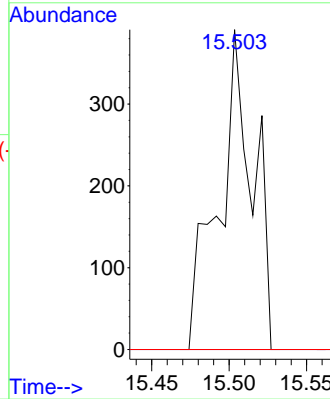
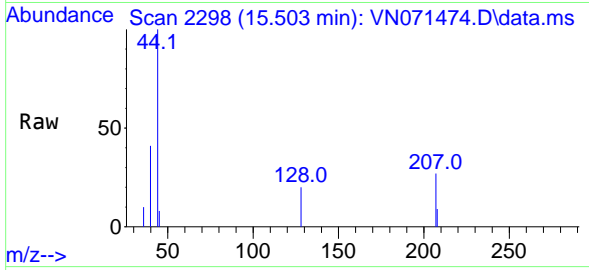


#95
 Naphthalene
 Concen: 5.098 ug/l
 RT: 15.503 min Scan# 2298
 Delta R.T. -0.001 min
 Lab File: VN071474.D
 Acq: 22 Mar 2022 18:09

Instrument : MSVOA_N
 ClientSampleId : TRIP-BLANK

Tgt Ion:128 Resp: 602

Ion	Ratio	Lower	Upper
128	100		
127	0.0	10.5	15.7#
129	0.0	8.7	13.1#



#96
 1,2,3-Trichlorobenzene
 Concen: 2.751 ug/l
 RT: 15.698 min Scan# 2331
 Delta R.T. -0.000 min
 Lab File: VN071474.D
 Acq: 22 Mar 2022 18:09

Tgt Ion:180 Resp: 126

Ion	Ratio	Lower	Upper
180	100		
182	0.0	47.4	142.2#
145	0.0	15.0	45.1#

