

Data Path : Z:\VOASRV\HPCHEM1\MSVOA N\DATA\VN032319\
 Data File : VN054629.D
 Acq On : 24 Mar 2019 3:25
 Operator : JC/SP
 Sample : K2043-10
 Misc : 7.14g/5mL/100uL/5.00mL/MSVOA_N/MEOH
 ALS Vial : 37 Sample Multiplier: 1

Instrument :
 MSVOA_N
 ClientSampleId :
 WP022-SB430-190319-(20-22)

Quant Time: Mar 25 05:34:56 2019
 Quant Method : Z:\VOASRV\HPCHEM1\MSVOA_N\METHODS\82N032019W.M
 Quant Title : SW846 8260
 QLast Update : Fri Mar 22 02:09:07 2019
 Response via : Initial Calibration

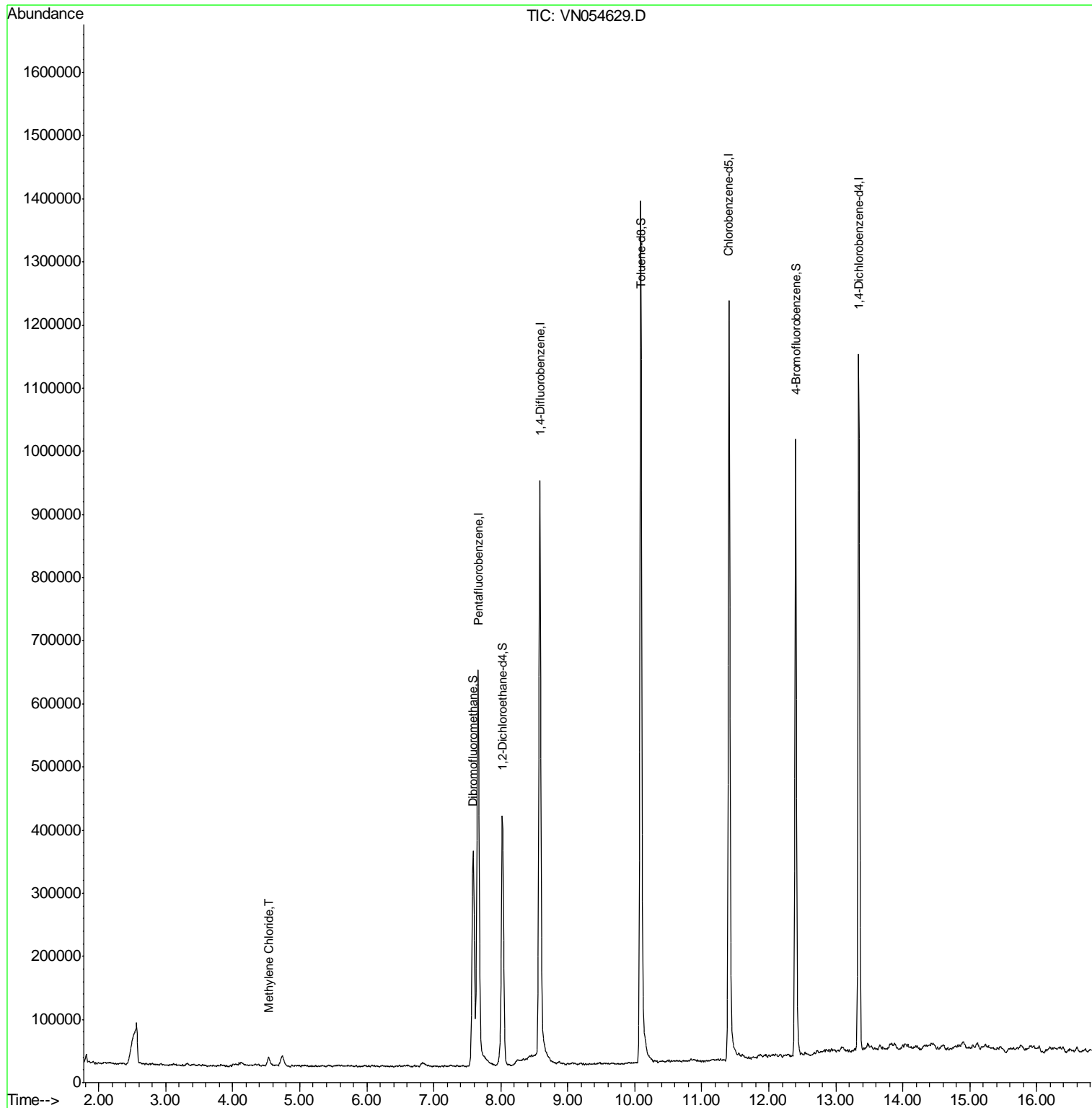
Internal Standards	R.T.	QIon	Response	Conc	Units	Dev(Min)
1) Pentafluorobenzene	7.66	168	553965	50.00	ug/l	0.00
34) 1,4-Difluorobenzene	8.58	114	856724	50.00	ug/l	0.00
63) Chlorobenzene-d5	11.41	117	722034	50.00	ug/l	0.00
72) 1,4-Dichlorobenzene-d4	13.34	152	298845	50.00	ug/l	0.00
System Monitoring Compounds						
33) 1,2-Dichloroethane-d4	8.02	65	339171	49.22	ug/l	0.00
Spiked Amount	50.000		Recovery	=	98.44%	
35) Dibromofluoromethane	7.59	113	257339	46.62	ug/l	0.00
Spiked Amount	50.000		Recovery	=	93.24%	
50) Toluene-d8	10.09	98	1018661	49.09	ug/l	0.00
Spiked Amount	50.000		Recovery	=	98.18%	
62) 4-Bromofluorobenzene	12.40	95	336064	47.60	ug/l	0.00
Spiked Amount	50.000		Recovery	=	95.20%	
Target Compounds						
20) Methylene Chloride	4.54	84	8550	1.400	ug/l	86

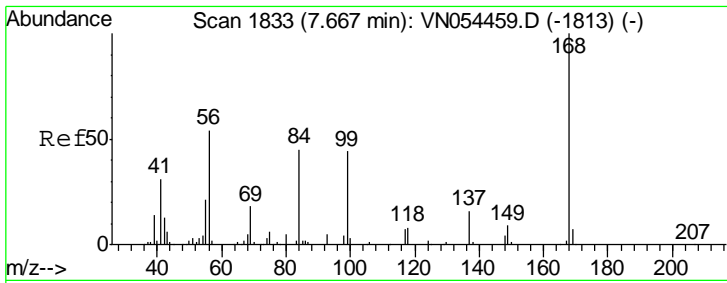
(#) = qualifier out of range (m) = manual integration (+) = signals summed

Data Path : Z:\VOASRV\HPCHEM1\MSVOA N\DATA\VN032319\
Data File : VN054629.D
Acq On : 24 Mar 2019 3:25
Operator : JC/SP
Sample : K2043-10
Misc : 7.14µ/5mL/100uL/5.00mL/MSVOA_N/MEOH
ALS Vial : 37 Sample Multiplier: 1

Instrument :
MSVOA_N
ClientSampleId :
WP022-SB430-190319-(20-22)

Quant Time: Mar 25 05:34:56 2019
Quant Method : Z:\VOASRV\HPCHEM1\MSVOA_N\METHODS\82N032019W.M
Quant Title : SW846 8260
QLast Update : Fri Mar 22 02:09:07 2019
Response via : Initial Calibration

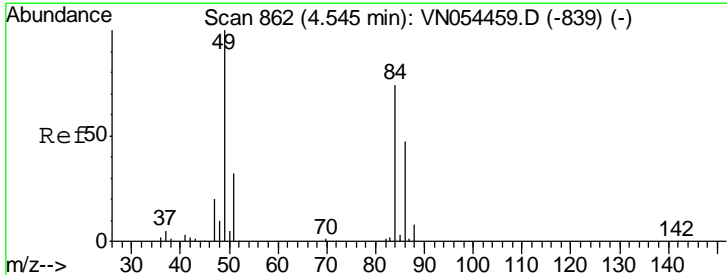
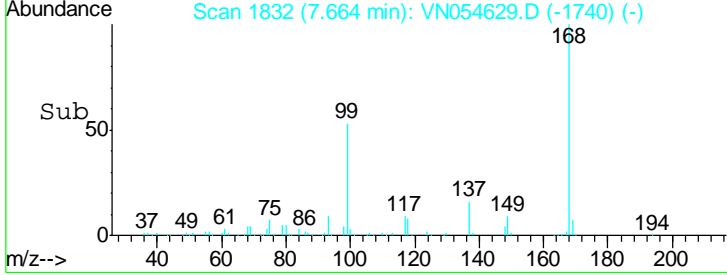
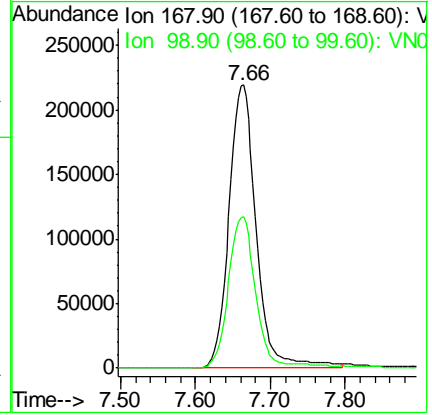
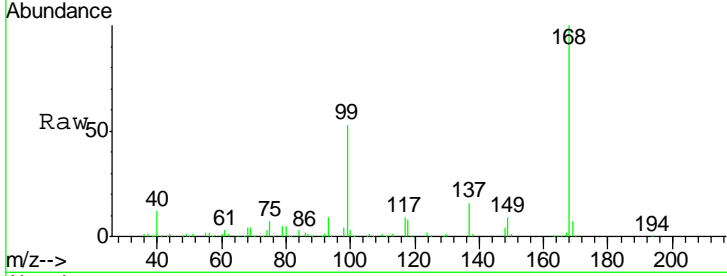




#1
 Pentafluorobenzene
 Concen: 50.000 ug/l
 RT: 7.66 min Scan# 1832
 Delta R.T. -0.00 min
 Lab File: VN054629.D
 Acq: 24 Mar 2019 3:25

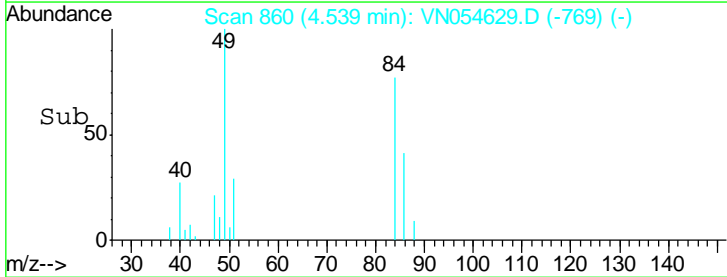
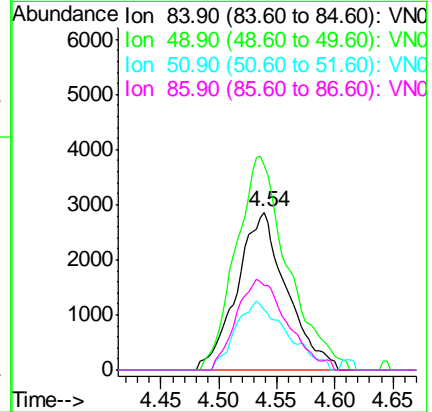
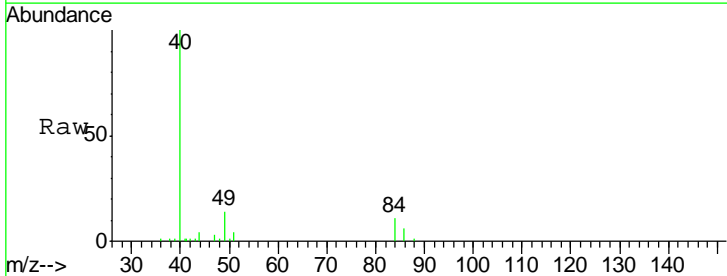
Instrument : MSVOA_N
 ClientSampled : WP022-SB430-190319-(20-22)

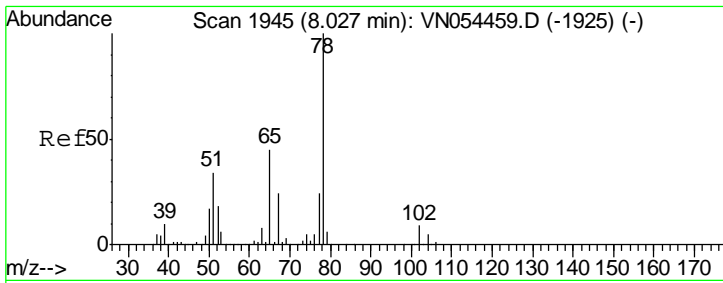
Tgt Ion	Resp	Lower	Upper
168	100		
99	53.5	37.1	55.7



#20
 Methylene Chloride
 Concen: 1.400 ug/l
 RT: 4.54 min Scan# 860
 Delta R.T. -0.01 min
 Lab File: VN054629.D
 Acq: 24 Mar 2019 3:25

Tgt Ion	Resp	Lower	Upper
84	100		
49	130.1	89.7	134.5
51	38.2	28.2	42.4
86	53.4	50.8	76.2

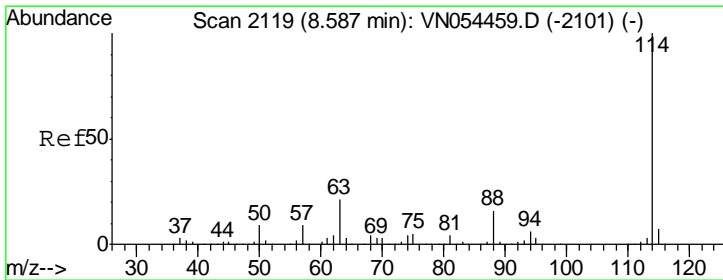
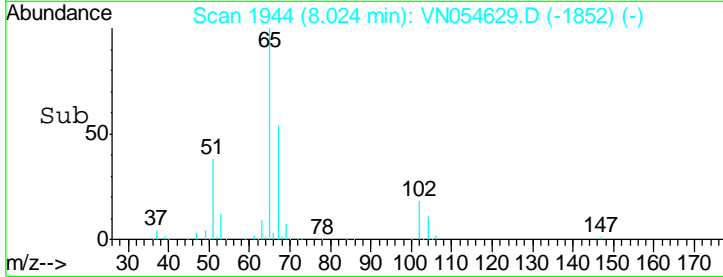
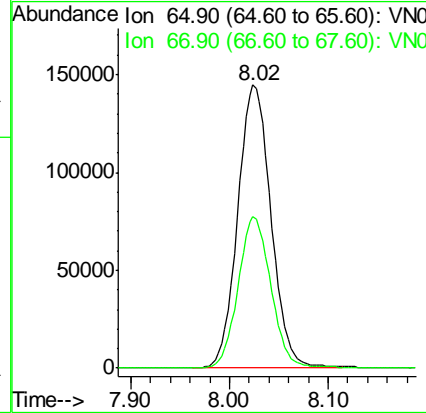
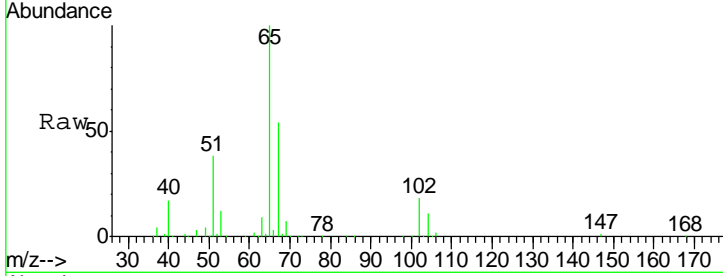




#33
 1,2-Dichloroethane-d4
 Concen: 49.223 ug/l
 RT: 8.02 min Scan# 1944
 Delta R.T. -0.00 min
 Lab File: VN054629.D
 Acq: 24 Mar 2019 3:25

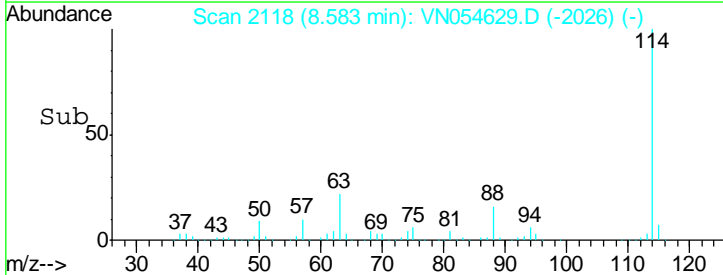
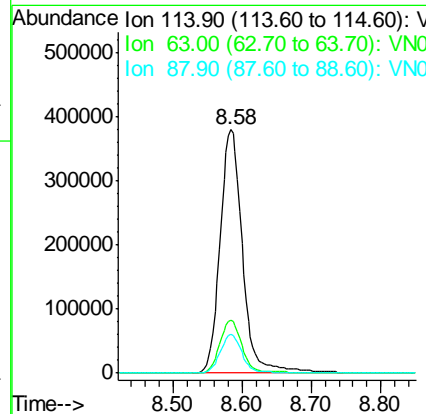
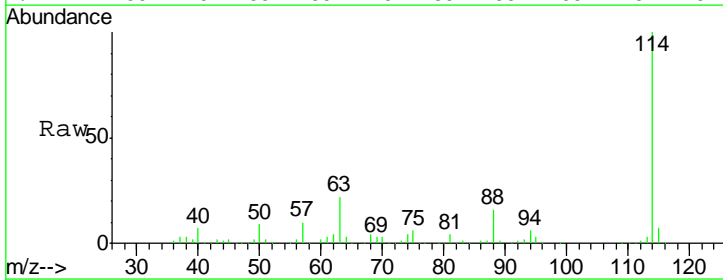
Instrument :
 MSVOA_N
ClientSampled :
 WP022-SB430-190319-(20-22)

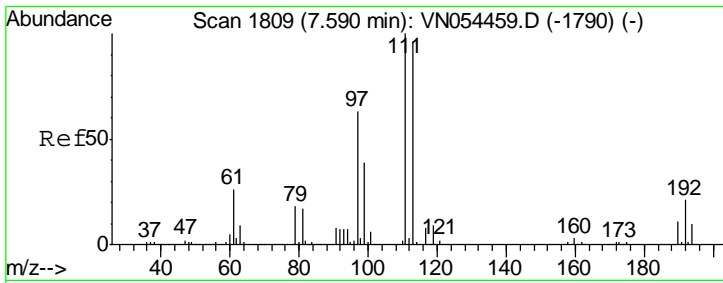
Tgt Ion: 65 Resp: 339171
 Ion Ratio Lower Upper
 65 100
 67 52.7 0.0 104.6



#34
 1,4-Difluorobenzene
 Concen: 50.000 ug/l
 RT: 8.58 min Scan# 2118
 Delta R.T. -0.00 min
 Lab File: VN054629.D
 Acq: 24 Mar 2019 3:25

Tgt Ion: 114 Resp: 856724
 Ion Ratio Lower Upper
 114 100
 63 21.9 0.0 35.2
 88 15.7 0.0 30.2

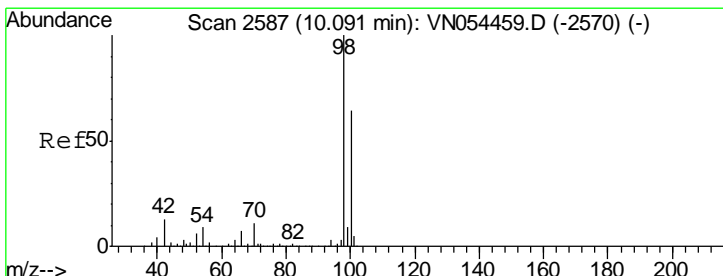
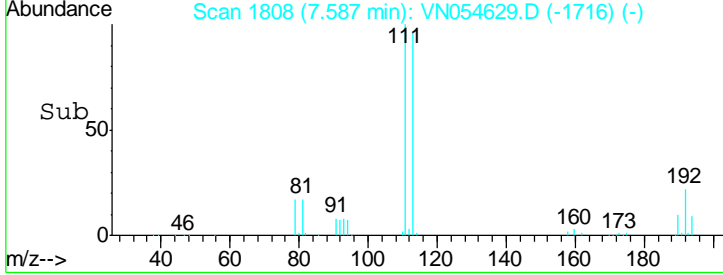
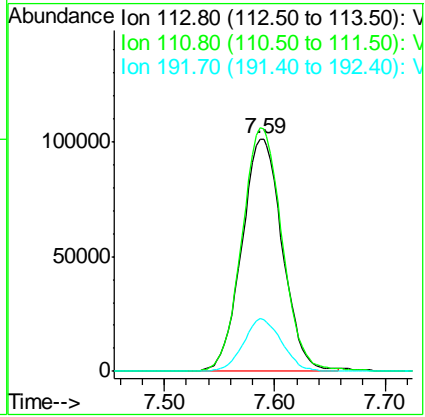
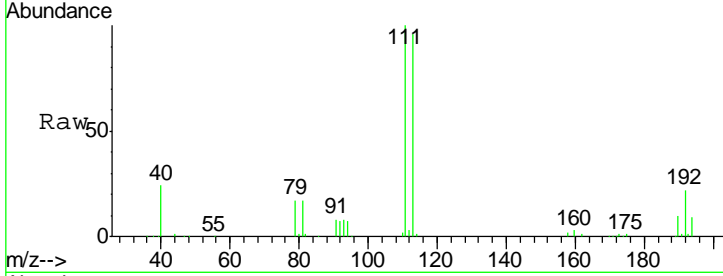




#35
 Dibromofluoromethane
 Concen: 46.624 ug/l
 RT: 7.59 min Scan# 1808
 Delta R.T. -0.00 min
 Lab File: VN054629.D
 Acq: 24 Mar 2019 3:25

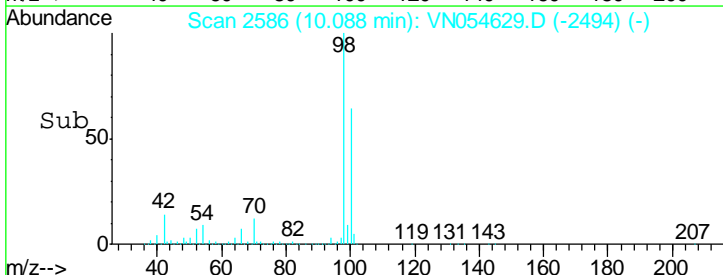
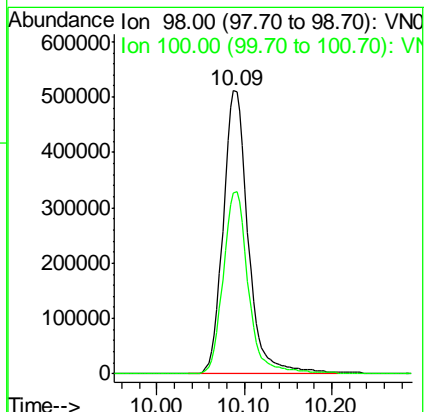
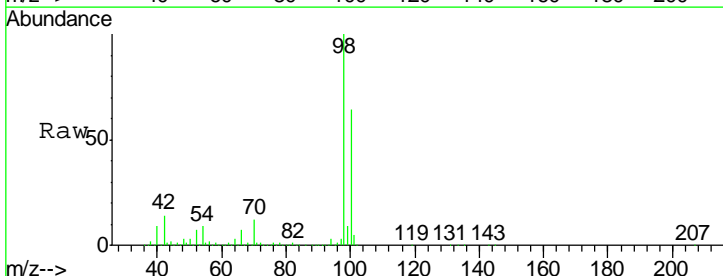
Instrument :
 MSVOA_N
 ClientSampled :
 WP022-SB430-190319-(20-22)

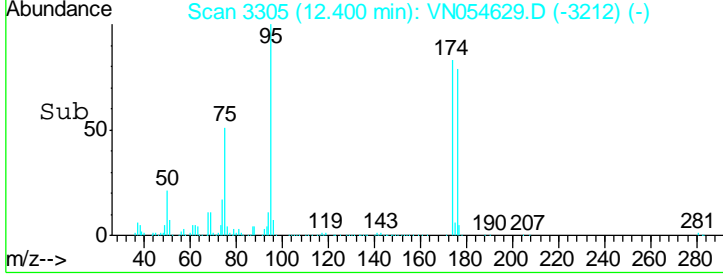
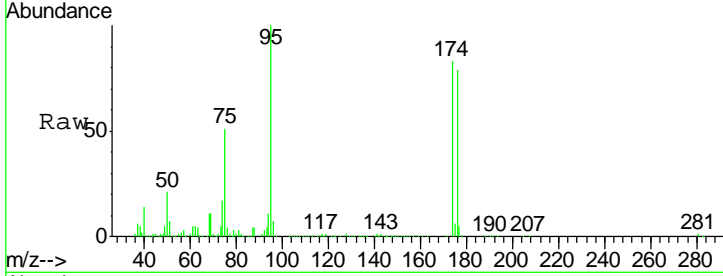
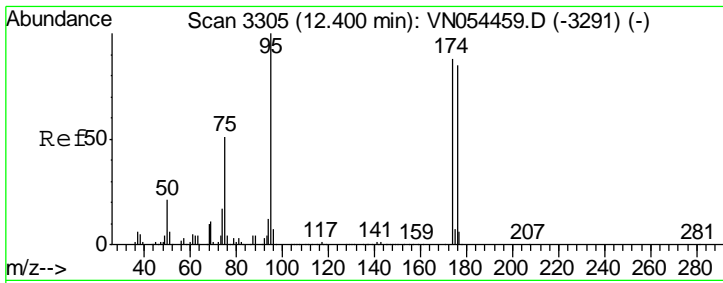
Tgt Ion	Resp	Lower	Upper
113	257339		
111	104.6	82.2	123.4
192	21.4	19.2	28.8



#50
 Toluene-d8
 Concen: 49.093 ug/l
 RT: 10.09 min Scan# 2586
 Delta R.T. -0.00 min
 Lab File: VN054629.D
 Acq: 24 Mar 2019 3:25

Tgt Ion	Resp	Lower	Upper
98	1018661		
100	64.8	51.2	76.8

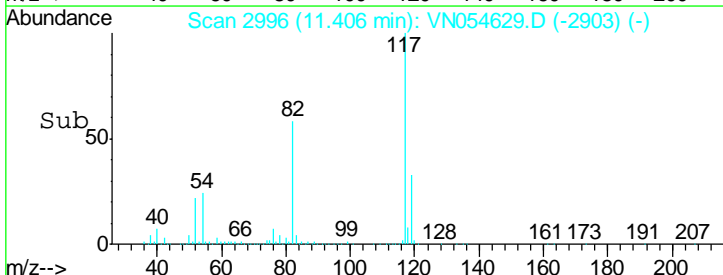
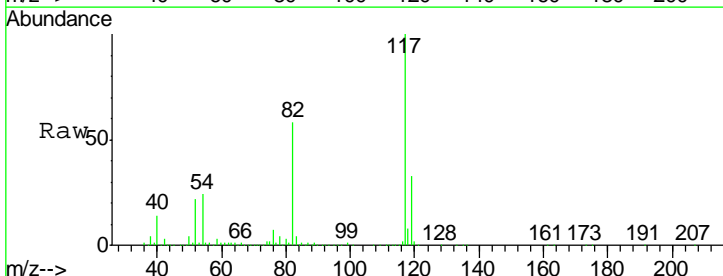
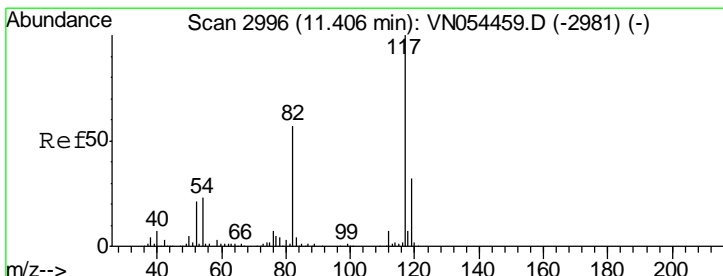
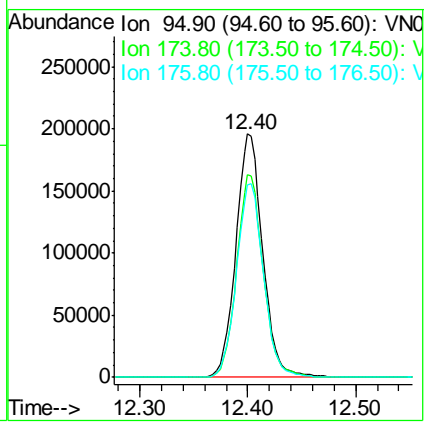




#62
 4-Bromofluorobenzene
 Concen: 47.596 ug/l
 RT: 12.40 min Scan# 3305
 Delta R.T. -0.00 min
 Lab File: VN054629.D
 Acq: 24 Mar 2019 3:25

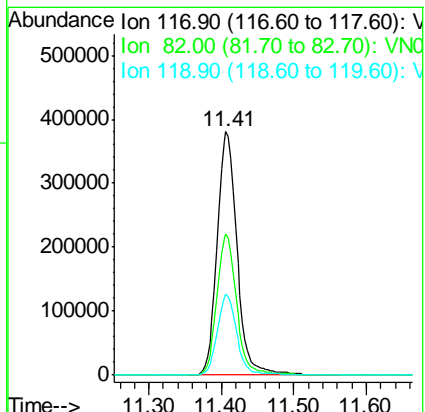
Instrument : MSVOA_N
 ClientSampled : WP022-SB430-190319-(20-22)

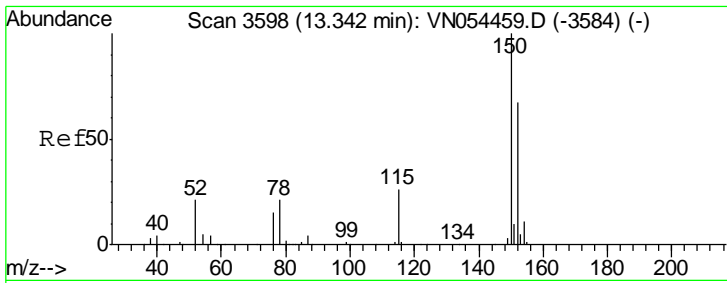
Tgt Ion	Resp	Lower	Upper
95	100		
174	83.3	0.0	191.0
176	81.0	0.0	187.4



#63
 Chlorobenzene-d5
 Concen: 50.000 ug/l
 RT: 11.41 min Scan# 2996
 Delta R.T. -0.00 min
 Lab File: VN054629.D
 Acq: 24 Mar 2019 3:25

Tgt Ion	Resp	Lower	Upper
117	100		
82	58.2	40.0	60.0
119	33.2	25.8	38.6





#72
 1,4-Dichlorobenzene-d4
 Concen: 50.000 ug/l
 RT: 13.34 min Scan# 3598
 Delta R.T. -0.00 min
 Lab File: VN054629.D
 Acq: 24 Mar 2019 3:25

Instrument : MSVOA_N
 ClientSampled : WP022-SB430-190319-(20-22)

Tot Ion:152 Resp: 298845

Ion	Ratio	Lower	Upper
152	100		
115	58.3	27.2	81.6
150	157.7	0.0	349.2

