

Data Path : Z:\VOASRV\HPCHEM1\MSVOA\_N\DATA\VN032520\  
 Data File : VN060688.D  
 Acq On : 25 Mar 2020 11:42  
 Operator : JC/MD  
 Sample : VN0325WBL01  
 Misc : 5.00mL/MSVOA\_N/WATER  
 ALS Vial : 3 Sample Multiplier: 1

Instrument :  
 MSVOA\_N  
 ClientSampleId :  
 VN0325WBL01

Quant Time: Mar 26 02:47:52 2020  
 Quant Method : Z:\VOASRV\HPCHEM1\MSVOA\_N\METHODS\82N031820W.M  
 Quant Title : SW846 8260  
 QLast Update : Wed Mar 18 08:49:09 2020  
 Response via : Initial Calibration

Internal Standards	R.T.	QIon	Response	Conc	Units	Dev(Min)
1) Pentafluorobenzene	7.64	168	199488	50.00	ug/l	0.00
34) 1,4-Difluorobenzene	8.56	114	332562	50.00	ug/l	0.00
63) Chlorobenzene-d5	11.40	117	303758	50.00	ug/l	0.00
72) 1,4-Dichlorobenzene-d4	13.34	152	129118	50.00	ug/l	0.00

## System Monitoring Compounds

33) 1,2-Dichloroethane-d4	8.00	65	128228	46.82	ug/l	0.00
Spiked Amount	50.000		Recovery	=	93.64%	
35) Dibromofluoromethane	7.56	113	99206	49.33	ug/l	0.00
Spiked Amount	50.000		Recovery	=	98.66%	
50) Toluene-d8	10.08	98	405966	49.43	ug/l	0.00
Spiked Amount	50.000		Recovery	=	98.86%	
62) 4-Bromofluorobenzene	12.40	95	145166	48.22	ug/l	0.00
Spiked Amount	50.000		Recovery	=	96.44%	

## Target Compounds

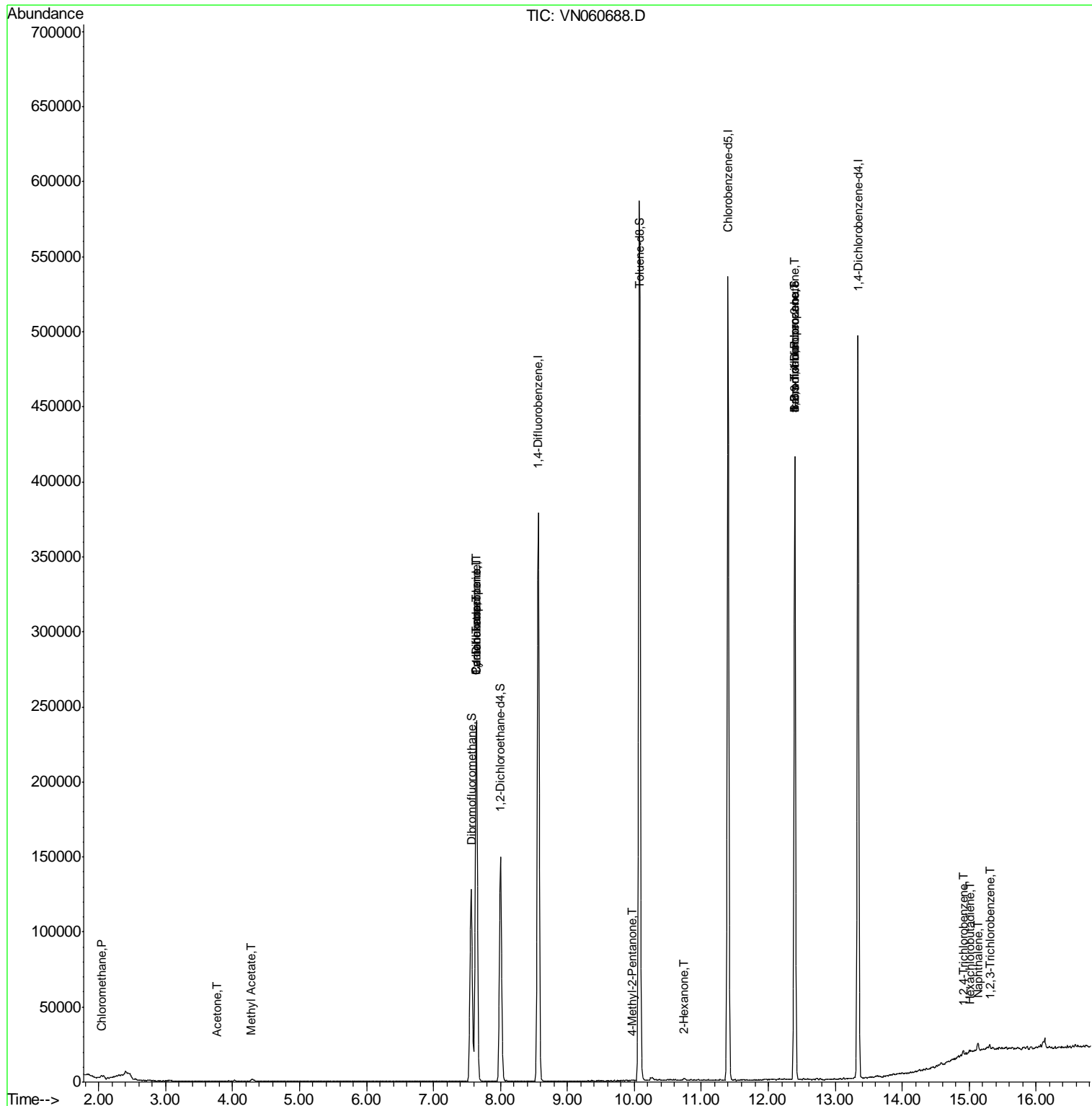
						Qvalue
3) Chloromethane	2.04	50	1007	0.279	ug/l #	75
16) Acetone	3.78	43	379	0.391	ug/l #	43
18) Methyl Acetate	4.29	43	3084	1.130	ug/l #	63
31) Cyclohexane	7.64	56	4232	0.959	ug/l #	1
36) 1,1-Dichloropropene	7.64	75	15242	4.733	ug/l #	49
38) Carbon Tetrachloride	7.64	117	19022	6.591	ug/l #	16
51) 4-Methyl-2-Pentanone	9.97	43	683	0.209	ug/l #	37
59) 2-Hexanone	10.73	43	827	0.352	ug/l	66
71) Bromoform	12.39	173	808	2.111	ug/l #	1
76) 1,2,3-Trichloropropane	12.39	75	72066	25.866	ug/l #	100
81) trans-1,4-Dichloro-2-buten	12.39	75	72066	66.432	ug/l #	13
92) 1,2-Dibromo-3-Chloropropan	14.27	75	131	Below Cal	#	3
93) 1,2,4-Trichlorobenzene	14.91	180	1055	0.436	ug/l	76
94) Hexachlorobutadiene	15.01	225	380	0.321	ug/l #	50
95) Naphthalene	15.13	128	4610	0.634	ug/l	96
96) 1,2,3-Trichlorobenzene	15.31	180	1177	0.494	ug/l	93

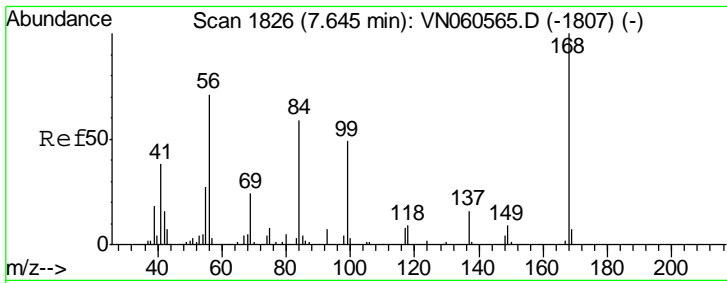
(#) = qualifier out of range (m) = manual integration (+) = signals summed

Data Path : Z:\VOASRV\HPCHEM1\MSVOA\_N\DATA\VN032520\  
 Data File : VN060688.D  
 Acq On : 25 Mar 2020 11:42  
 Operator : JC/MD  
 Sample : VN0325WBL01  
 Misc : 5.00mL/MSVOA\_N/WATER  
 ALS Vial : 3 Sample Multiplier: 1

Instrument :  
 MSVOA\_N  
 Client Sampled :  
 VN0325WBL01

Quant Time: Mar 26 02:47:52 2020  
 Quant Method : Z:\VOASRV\HPCHEM1\MSVOA\_N\METHODS\82N031820W.M  
 Quant Title : SW846 8260  
 QLast Update : Wed Mar 18 08:49:09 2020  
 Response via : Initial Calibration

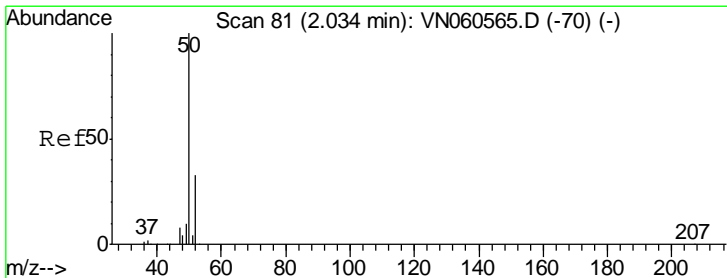
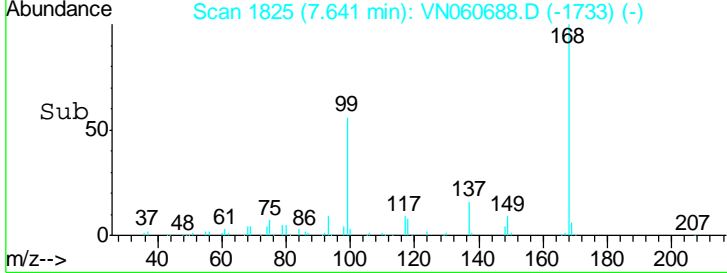
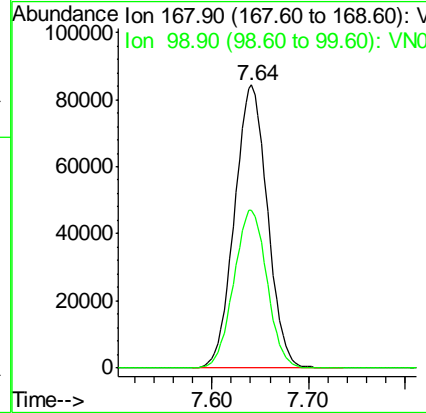
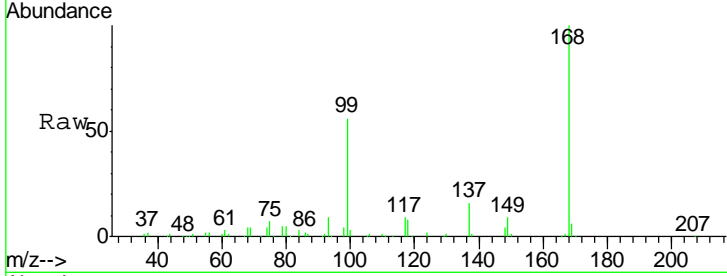




#1  
 Pentafluorobenzene  
 Concen: 50.000 ug/l  
 RT: 7.64 min Scan# 1825  
 Delta R.T. -0.00 min  
 Lab File: VN060688.D  
 Acq: 25 Mar 2020 11:42

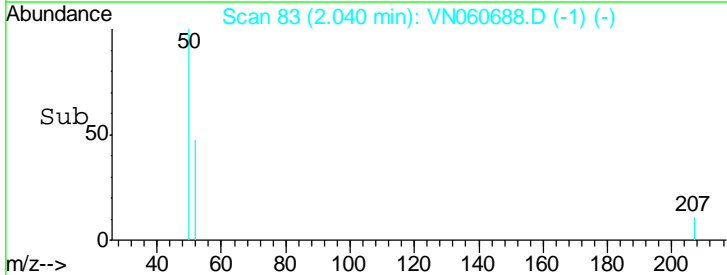
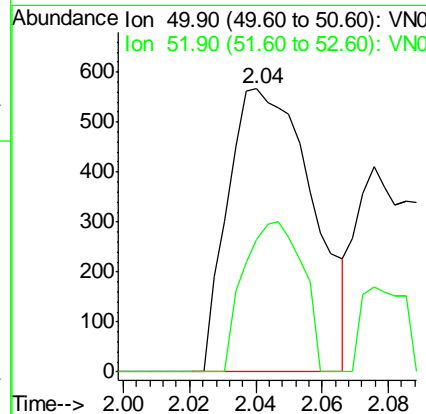
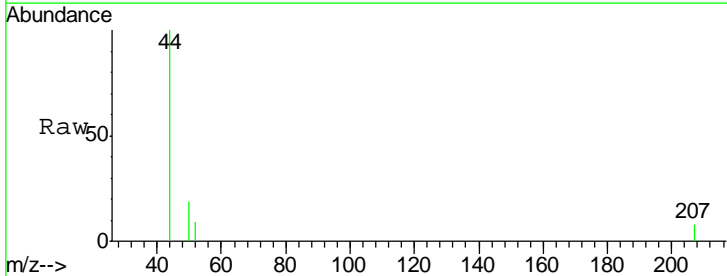
Instrument : MSVOA\_N  
 ClientSampled : VN0325WBL01

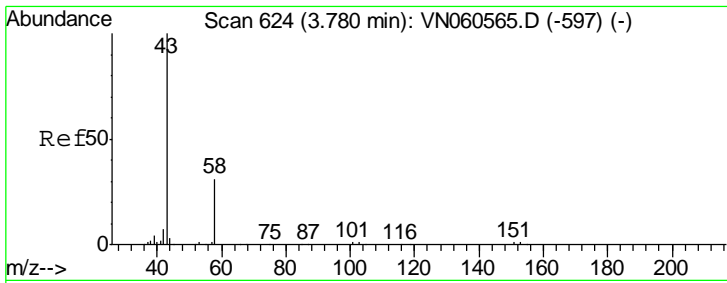
Tgt Ion	Resp	Lower	Upper
168	100		
99	56.0	44.0	66.0



#3  
 Chloromethane  
 Concen: 0.279 ug/l  
 RT: 2.04 min Scan# 83  
 Delta R.T. 0.01 min  
 Lab File: VN060688.D  
 Acq: 25 Mar 2020 11:42

Tgt Ion	Resp	Lower	Upper
50	100		
52	46.7	26.2	39.2

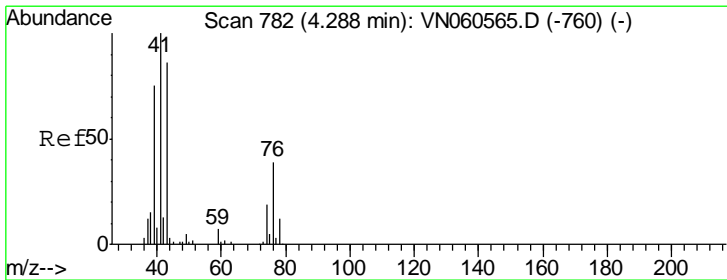
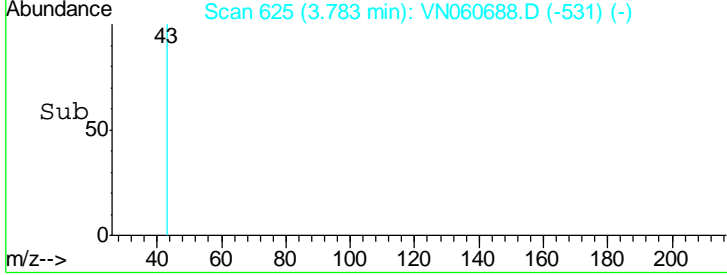
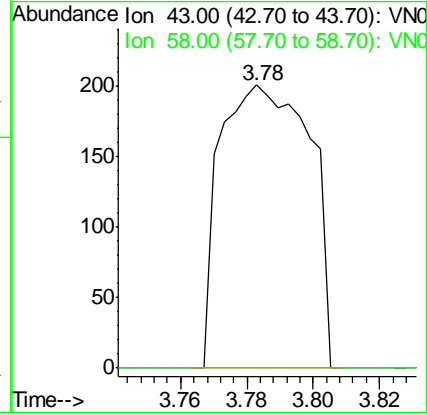
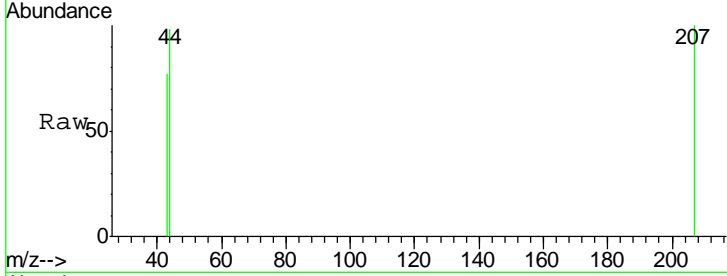




#16  
 Acetone  
 Concen: 0.391 ug/l  
 RT: 3.78 min Scan# 625  
 Delta R.T. 0.00 min  
 Lab File: VN060688.D  
 Acq: 25 Mar 2020 11:42

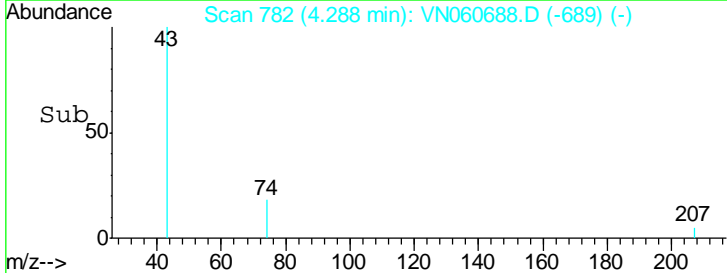
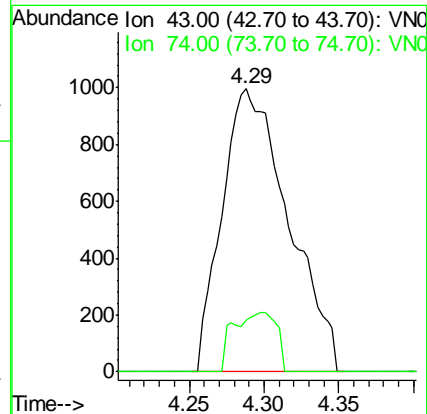
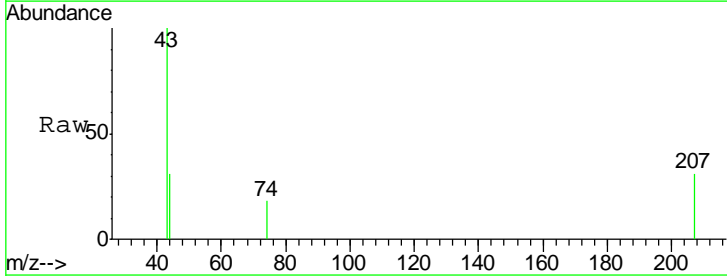
Instrument :  
 MSVOA\_N  
 ClientSampleId :  
 VN0325WBL01

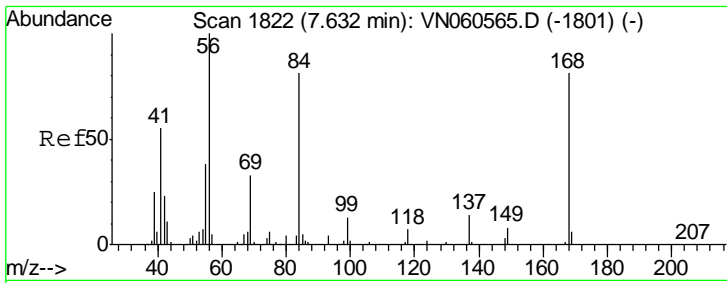
Tgt Ion: 43 Resp: 379  
 Ion Ratio Lower Upper  
 43 100  
 58 0.0 25.1 37.7#



#18  
 Methyl Acetate  
 Concen: 1.130 ug/l  
 RT: 4.29 min Scan# 782  
 Delta R.T. -0.00 min  
 Lab File: VN060688.D  
 Acq: 25 Mar 2020 11:42

Tgt Ion: 43 Resp: 3084  
 Ion Ratio Lower Upper  
 43 100  
 74 4.1 17.5 26.3#

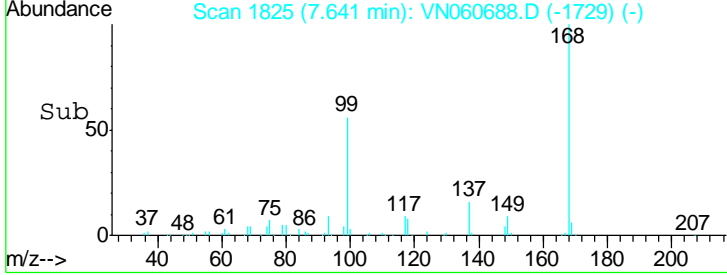
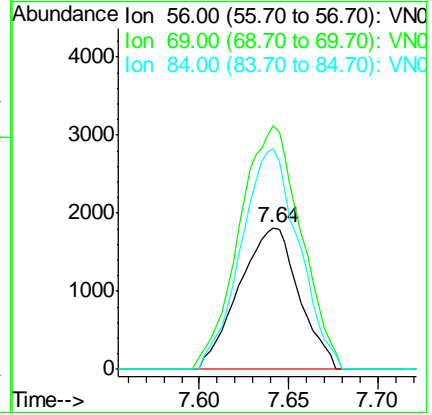
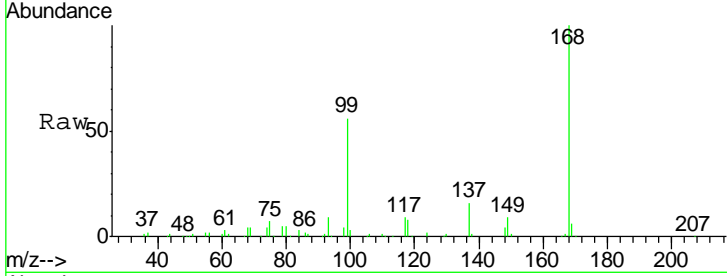




#31  
 Cyclohexane  
 Concen: 0.959 ug/l  
 RT: 7.64 min Scan# 1825  
 Delta R.T. 0.01 min  
 Lab File: VN060688.D  
 Acq: 25 Mar 2020 11:42

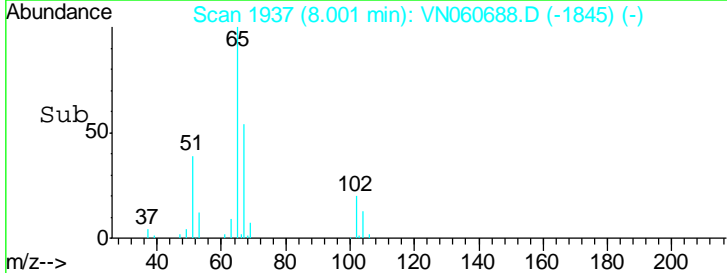
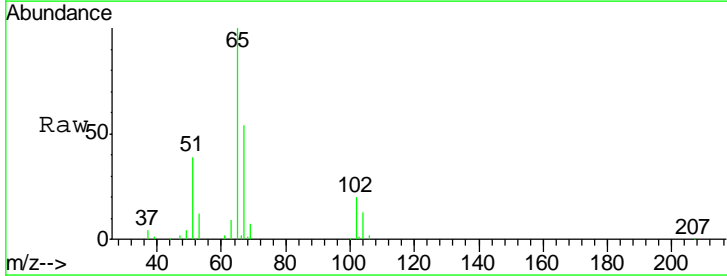
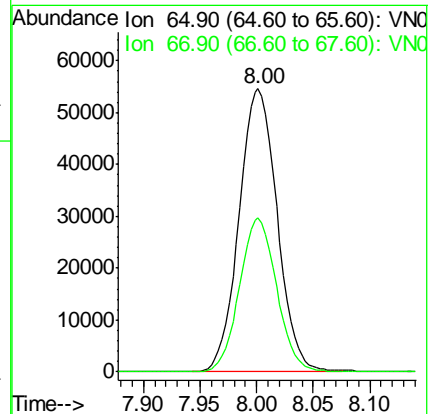
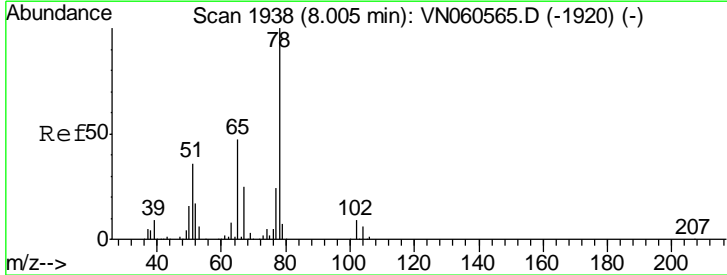
**Instrument :**  
 MSVOA\_N  
**ClientSampled :**  
 VN0325WBL01

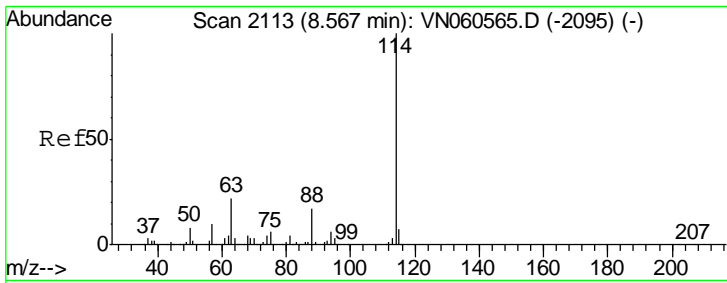
Tgt Ion	Resp	Lower	Upper
56	4232		
69	172.4	26.6	40.0#
84	156.6	64.3	96.5#



#33  
 1,2-Dichloroethane-d4  
 Concen: 46.824 ug/l  
 RT: 8.00 min Scan# 1937  
 Delta R.T. -0.00 min  
 Lab File: VN060688.D  
 Acq: 25 Mar 2020 11:42

Tgt Ion	Resp	Lower	Upper
65	128228		
67	53.0	0.0	107.6

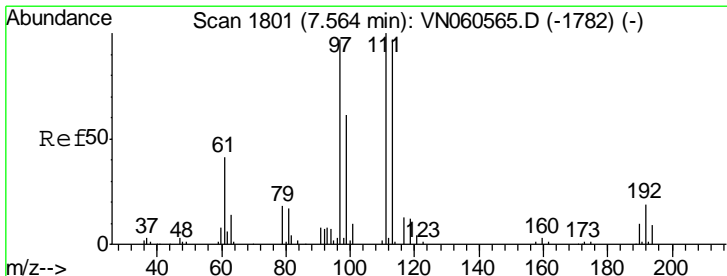
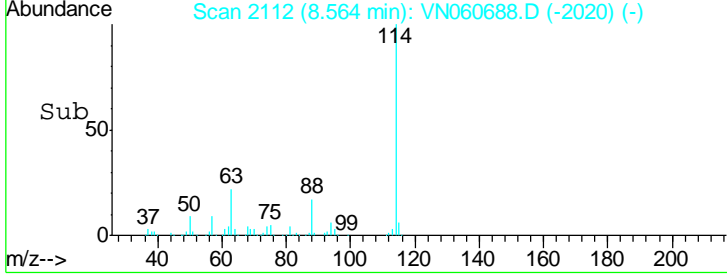
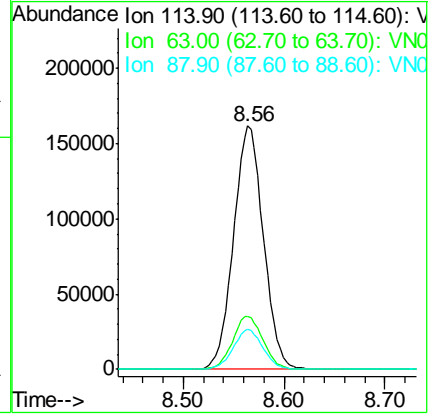
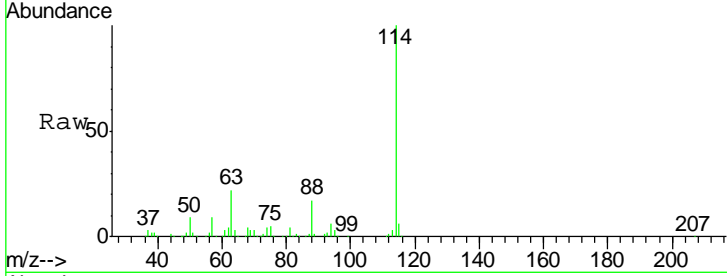




#34  
 1,4-Difluorobenzene  
 Concen: 50.000 ug/l  
 RT: 8.56 min Scan# 2112  
 Delta R.T. -0.00 min  
 Lab File: VN060688.D  
 Acq: 25 Mar 2020 11:42

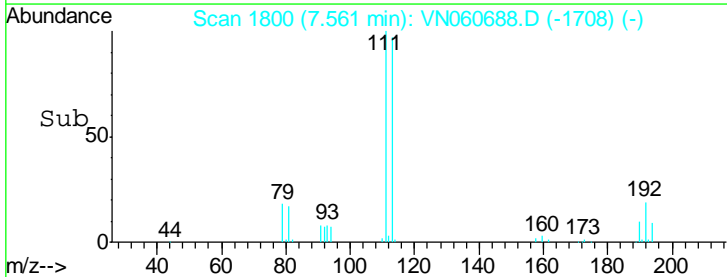
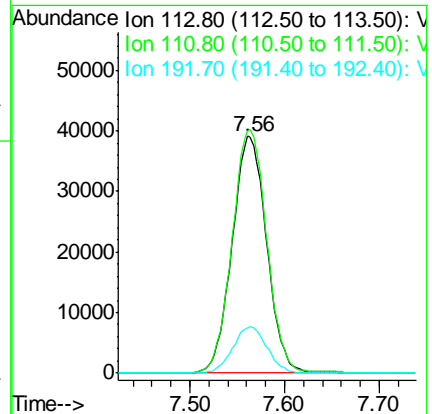
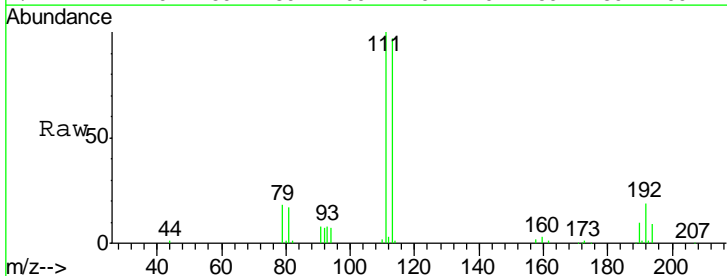
Instrument :  
 MSVOA\_N  
 ClientSampled :  
 VN0325WBL01

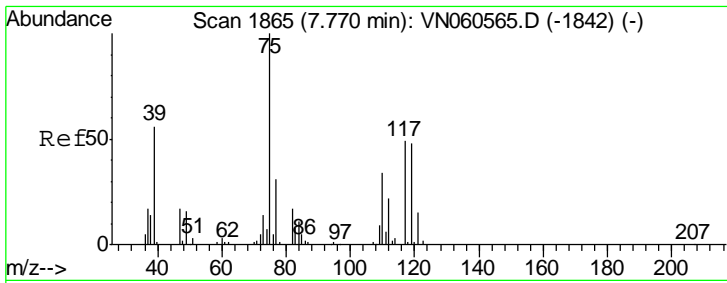
Tgt Ion	Resp	Lower	Upper
114	332562		
63	21.8	0.0	43.8
88	16.6	0.0	33.0



#35  
 Dibromofluoromethane  
 Concen: 49.334 ug/l  
 RT: 7.56 min Scan# 1800  
 Delta R.T. -0.00 min  
 Lab File: VN060688.D  
 Acq: 25 Mar 2020 11:42

Tgt Ion	Resp	Lower	Upper
113	99206		
111	102.8	82.9	124.3
192	19.4	15.8	23.8

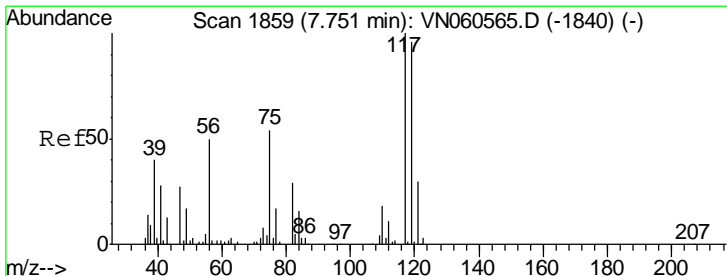
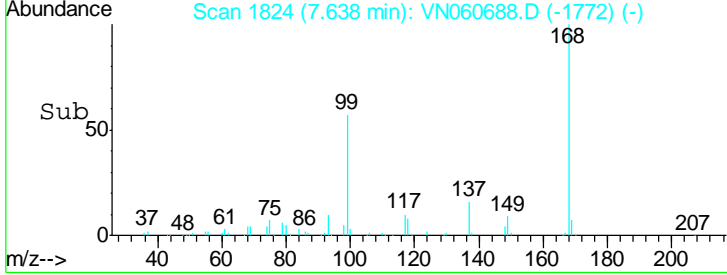
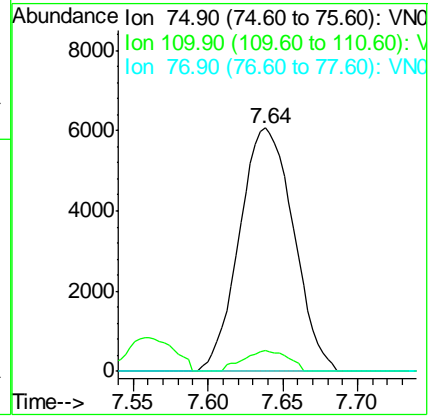
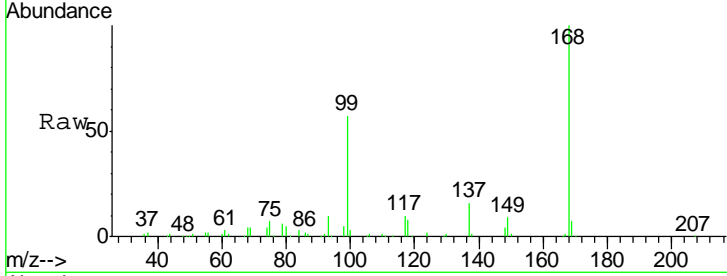




#36  
 1,1-Dichloropropene  
 Concen: 4.733 ug/l  
 RT: 7.64 min Scan# 1824  
 Delta R.T. -0.13 min  
 Lab File: VN060688.D  
 Acq: 25 Mar 2020 11:42

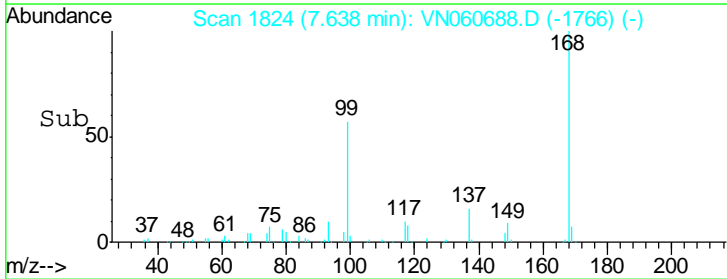
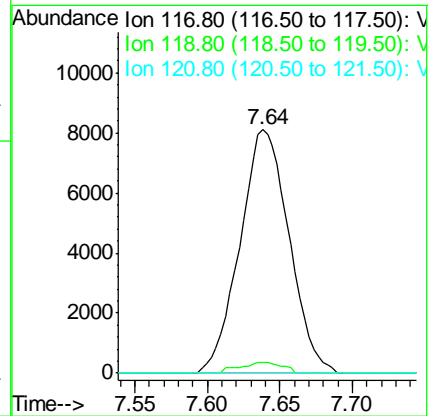
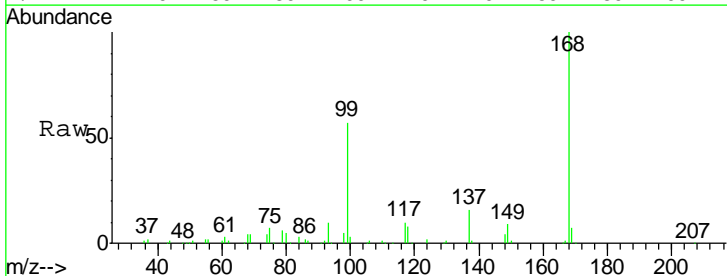
Instrument :  
 MSVOA\_N  
 ClientSampled :  
 VN0325WBL01

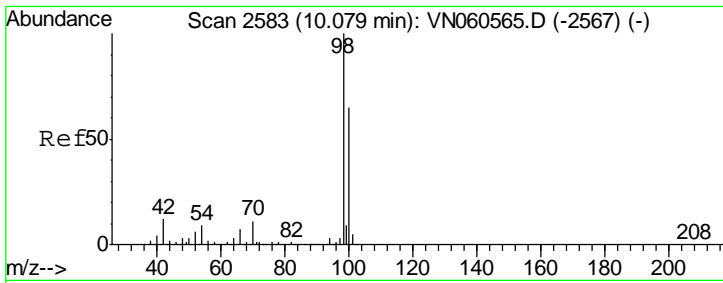
Tgt Ion	Resp	Lower	Upper
75	15242		
110	7.1	16.9	50.6#
77	0.0	24.6	36.8#



#38  
 Carbon Tetrachloride  
 Concen: 6.591 ug/l  
 RT: 7.64 min Scan# 1824  
 Delta R.T. -0.11 min  
 Lab File: VN060688.D  
 Acq: 25 Mar 2020 11:42

Tgt Ion	Resp	Lower	Upper
117	19022		
119	4.5	76.2	114.2#
121	0.0	23.7	35.5#

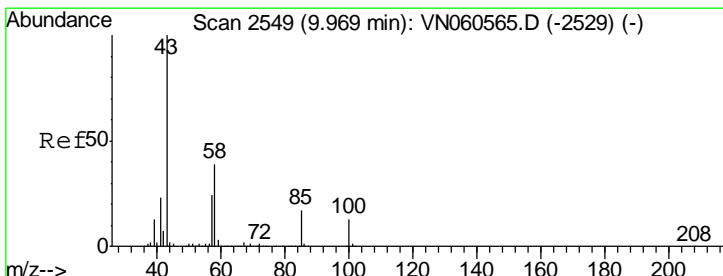
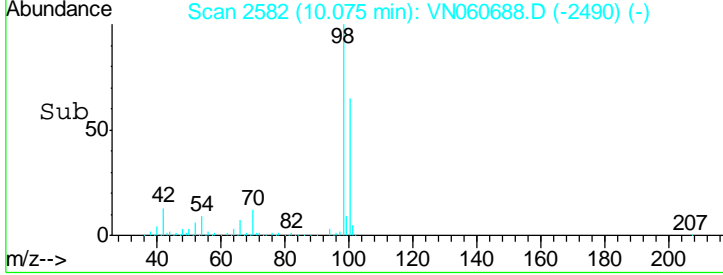
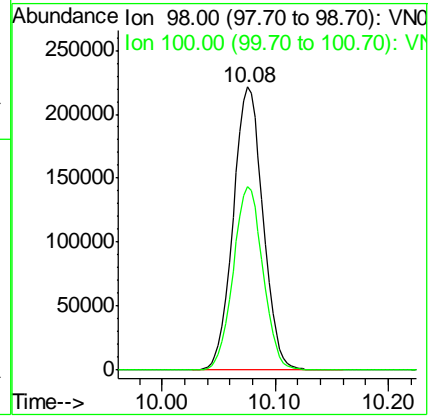
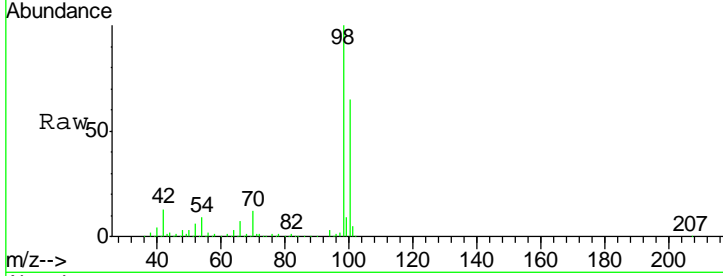




#50  
 Toluene-d8  
 Concen: 49.425 ug/l  
 RT: 10.08 min Scan# 2582  
 Delta R.T. -0.00 min  
 Lab File: VN060688.D  
 Acq: 25 Mar 2020 11:42

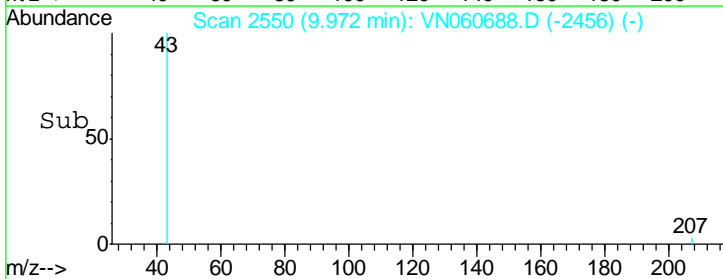
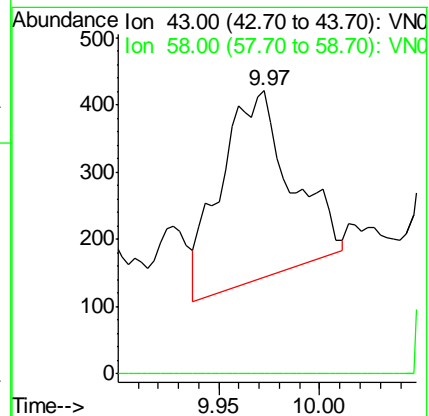
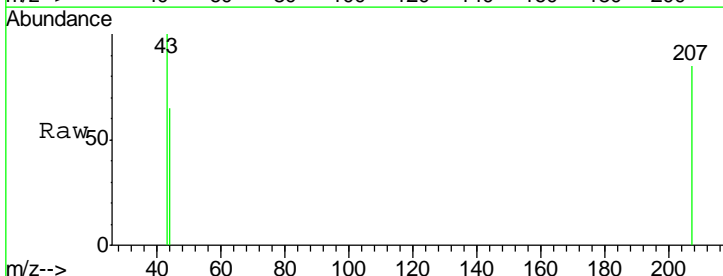
Instrument : MSVOA\_N  
 ClientSampled : VN0325WBL01

Tgt Ion	Resp	Ion Ratio	Lower	Upper
98	405966	100		
100		64.6	51.8	77.8

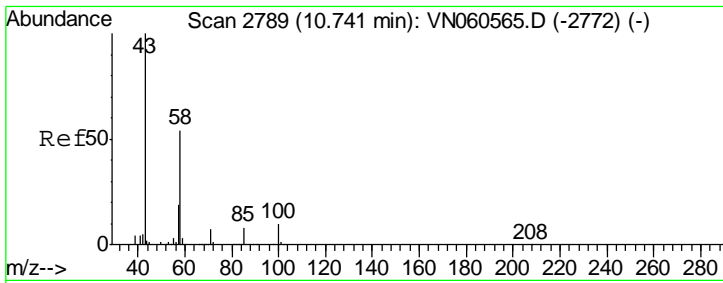


#51  
 4-Methyl-2-Pentanone  
 Concen: 0.209 ug/l  
 RT: 9.97 min Scan# 2550  
 Delta R.T. 0.00 min  
 Lab File: VN060688.D  
 Acq: 25 Mar 2020 11:42

Tgt Ion	Resp	Ion Ratio	Lower	Upper
43	683	100		
58		0.0	30.8	46.2#





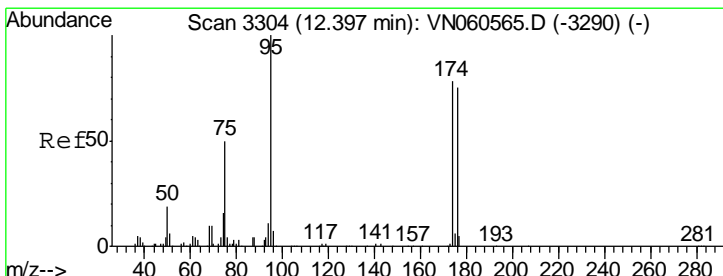
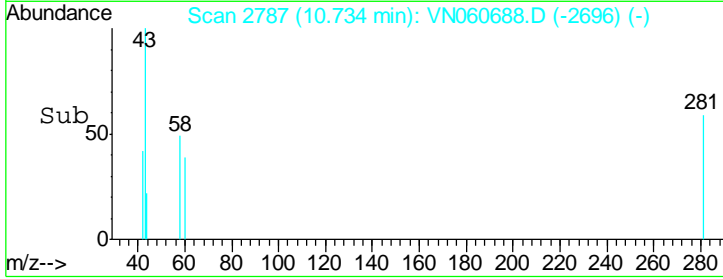
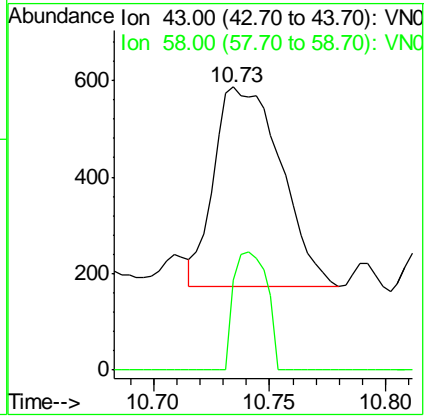
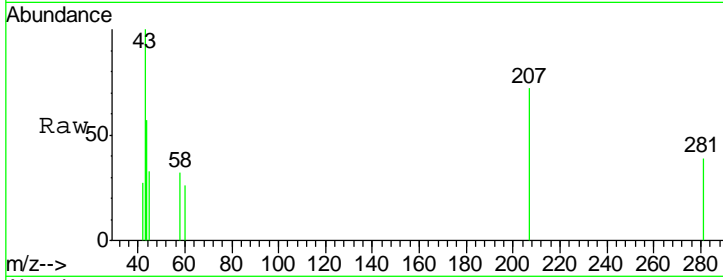


#59  
 2-Hexanone  
 Concen: 0.352 ug/l  
 RT: 10.73 min Scan# 2787  
 Delta R.T. -0.01 min  
 Lab File: VN060688.D  
 Acq: 25 Mar 2020 11:42

Instrument : MSVOA\_N  
 ClientSampled : VN0325WBL01

Tgt Ion: 43 Resp: 827

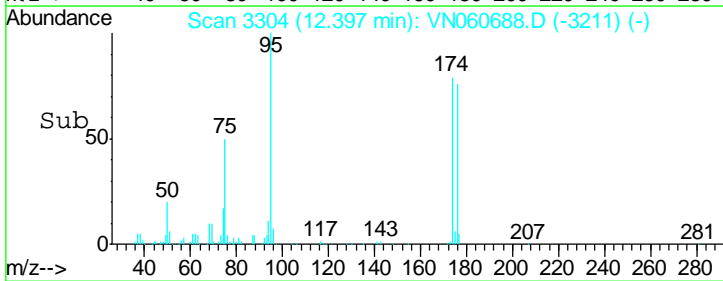
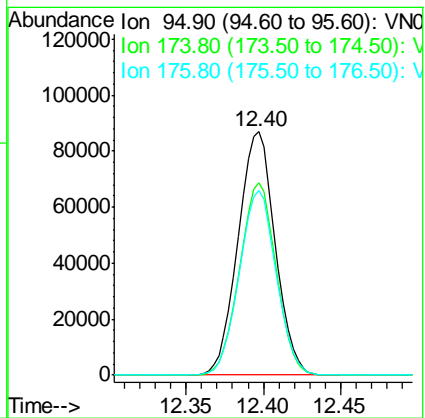
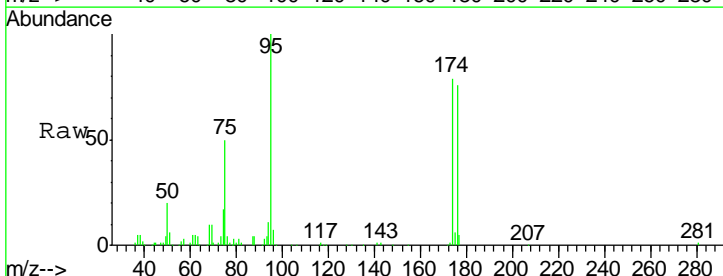
Ion	Ratio	Lower	Upper
43	100		
58	29.5	26.7	80.1

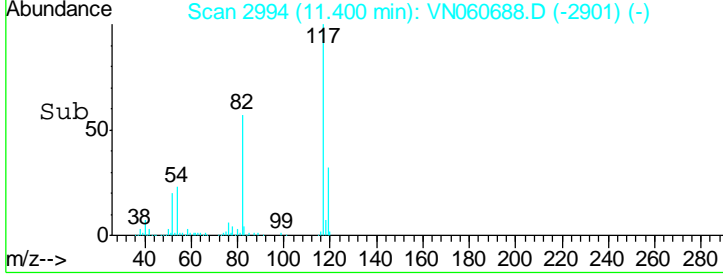
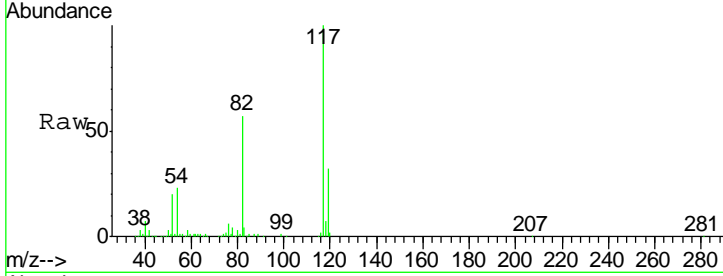
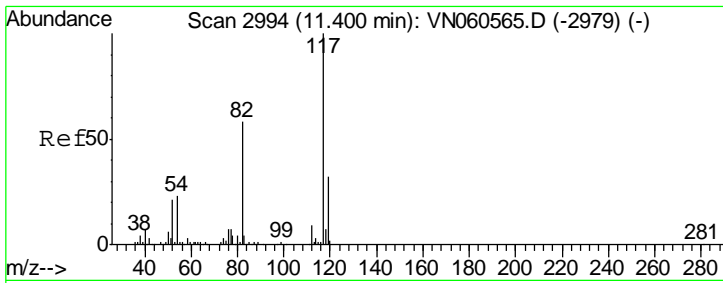


#62  
 4-Bromofluorobenzene  
 Concen: 48.224 ug/l  
 RT: 12.40 min Scan# 3304  
 Delta R.T. -0.00 min  
 Lab File: VN060688.D  
 Acq: 25 Mar 2020 11:42

Tgt Ion: 95 Resp: 145166

Ion	Ratio	Lower	Upper
95	100		
174	77.8	0.0	157.6
176	75.5	0.0	150.6

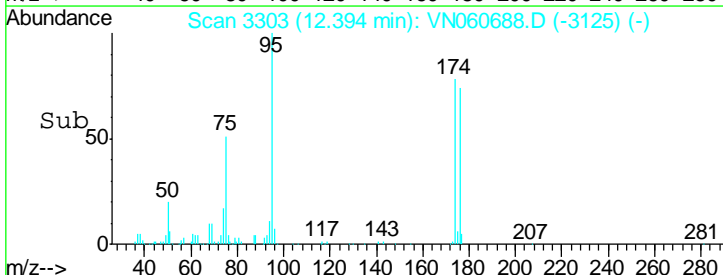
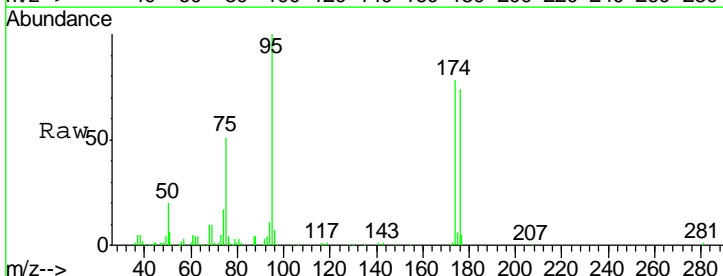
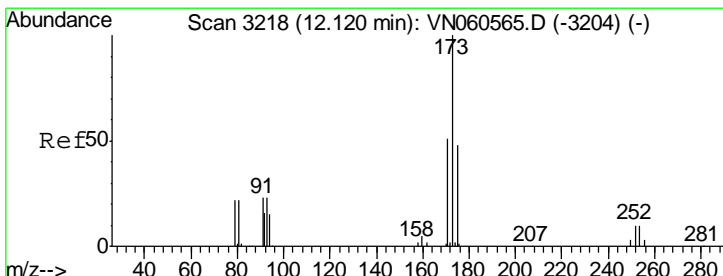
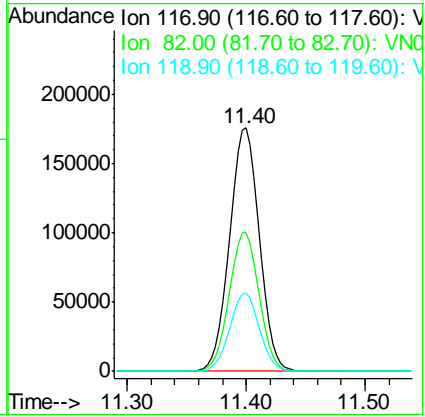




#63  
 Chlorobenzene-d5  
 Concen: 50.000 ug/l  
 RT: 11.40 min Scan# 2994  
 Delta R.T. -0.00 min  
 Lab File: VN060688.D  
 Acq: 25 Mar 2020 11:42

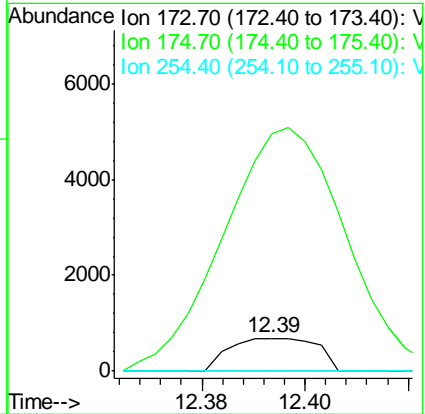
Instrument : MSVOA\_N  
 ClientSampled : VN0325WBL01

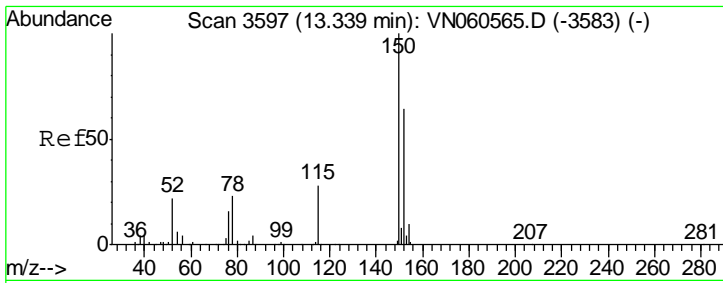
Tgt Ion	Resp	Lower	Upper
117	303758		
82	57.1	46.7	70.1
119	32.3	25.5	38.3



#71  
 Bromoform  
 Concen: 2.111 ug/l  
 RT: 12.39 min Scan# 3303  
 Delta R.T. 0.27 min  
 Lab File: VN060688.D  
 Acq: 25 Mar 2020 11:42

Tgt Ion	Resp	Lower	Upper
173	808		
175	895.8	24.1	72.4#
254	0.0	0.0	0.0

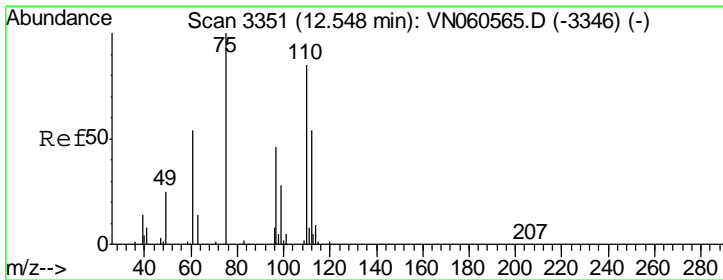
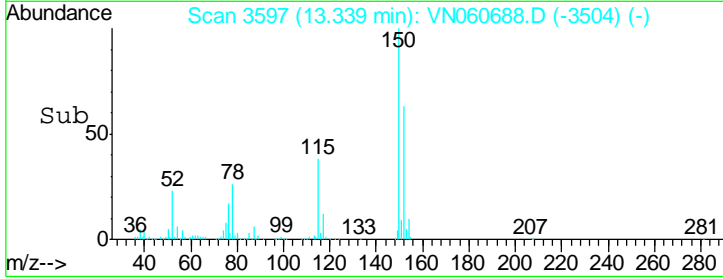
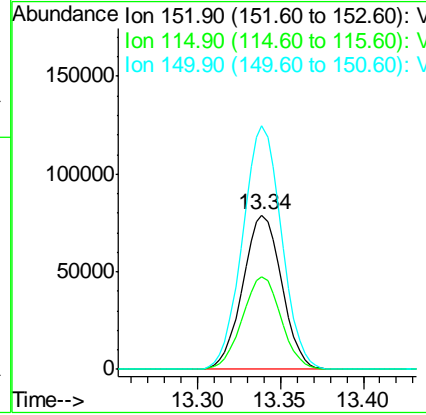
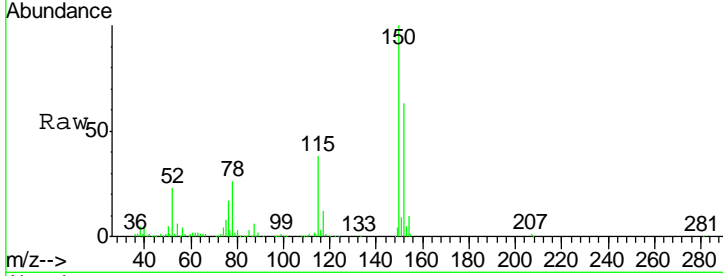




#72  
 1,4-Dichlorobenzene-d4  
 Concen: 50.000 ug/l  
 RT: 13.34 min Scan# 3597  
 Delta R.T. -0.00 min  
 Lab File: VN060688.D  
 Acq: 25 Mar 2020 11:42

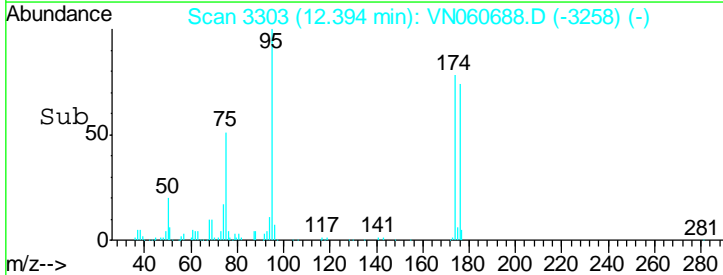
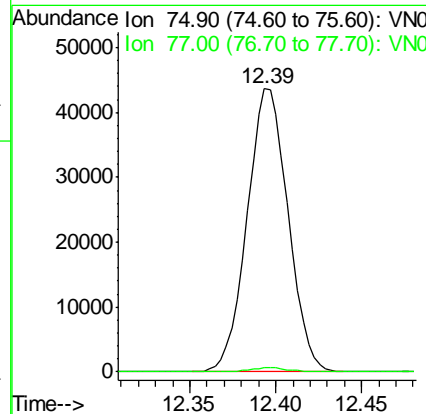
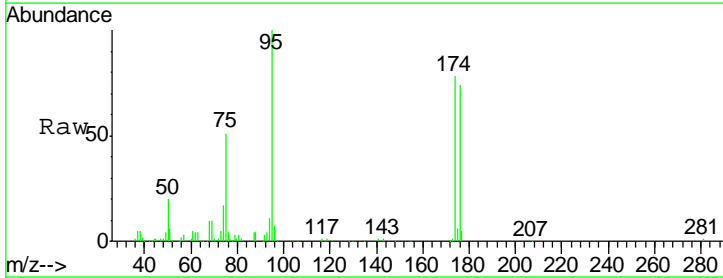
Instrument : MSVOA\_N  
 ClientSampled : VN0325WBL01

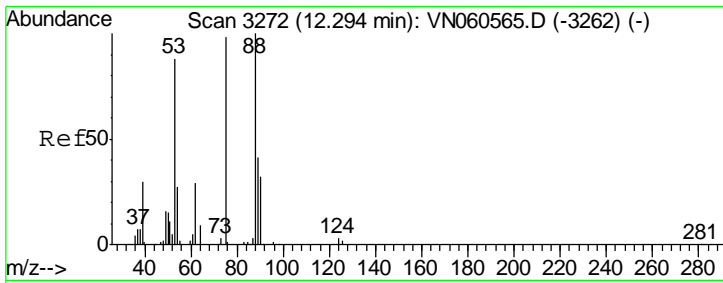
Tgt Ion	Resp	Lower	Upper
152	129118		
115	59.8	30.2	90.6
150	157.5	0.0	350.2



#76  
 1,2,3-Trichloropropane  
 Concen: 25.866 ug/l  
 RT: 12.39 min Scan# 3303  
 Delta R.T. -0.15 min  
 Lab File: VN060688.D  
 Acq: 25 Mar 2020 11:42

Tgt Ion	Resp	Lower	Upper
75	72066		
75	100		
77	1.3	0.0	0.0#

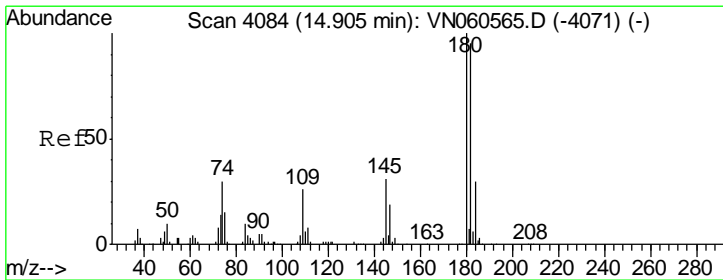
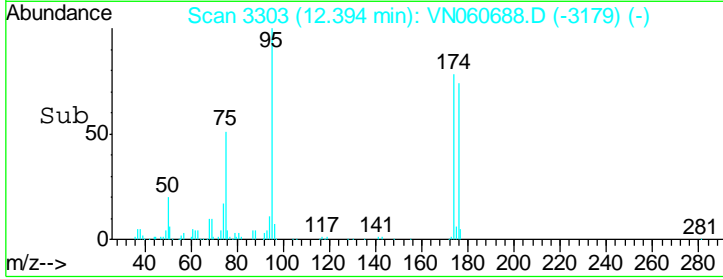
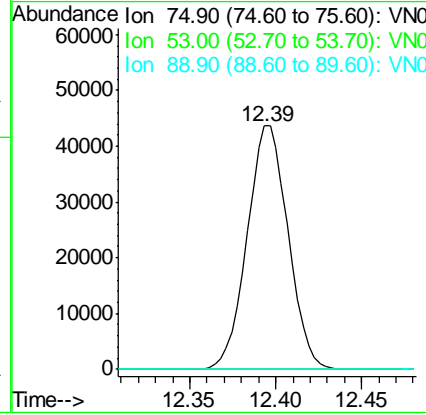
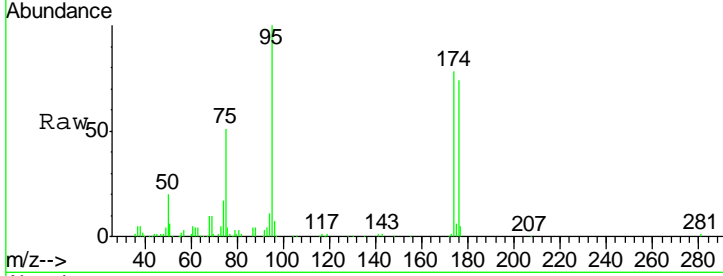




#81  
 trans-1,4-Dichloro-2-butene  
 Concen: 66.432 ug/l  
 RT: 12.39 min Scan# 3303  
 Delta R.T. 0.10 min  
 Lab File: VN060688.D  
 Acq: 25 Mar 2020 11:42

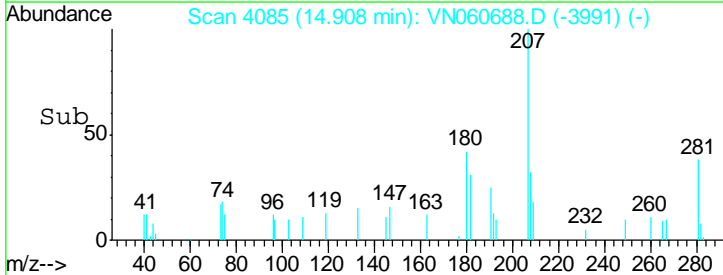
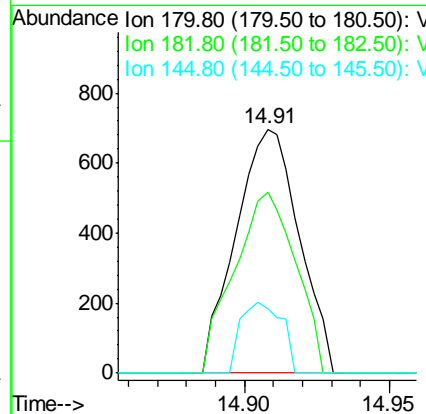
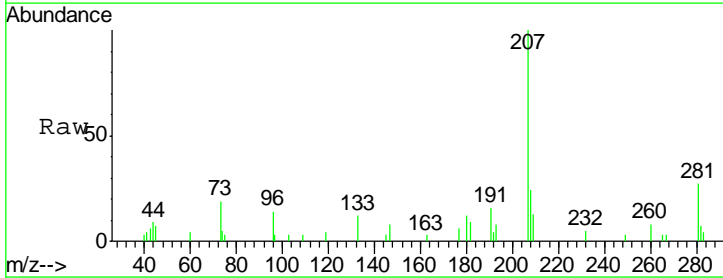
Instrument :  
 MSVOA\_N  
 ClientSampled :  
 VN0325WBL01

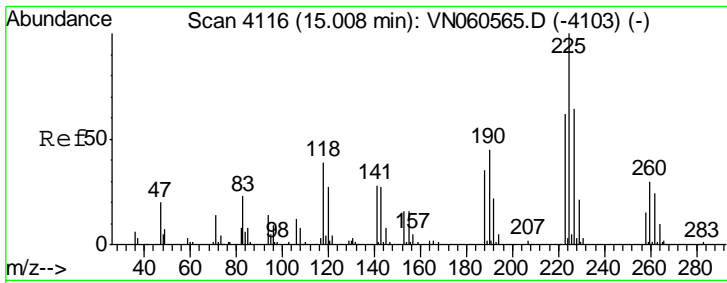
Tgt Ion	Resp	Lower	Upper
75	100		
53	0.0	73.0	109.4#
89	0.0	34.8	52.2#



#93  
 1,2,4-Trichlorobenzene  
 Concen: 0.436 ug/l  
 RT: 14.91 min Scan# 4085  
 Delta R.T. 0.00 min  
 Lab File: VN060688.D  
 Acq: 25 Mar 2020 11:42

Tgt Ion	Resp	Lower	Upper
180	100		
182	72.1	47.9	143.8
145	19.0	15.4	46.2

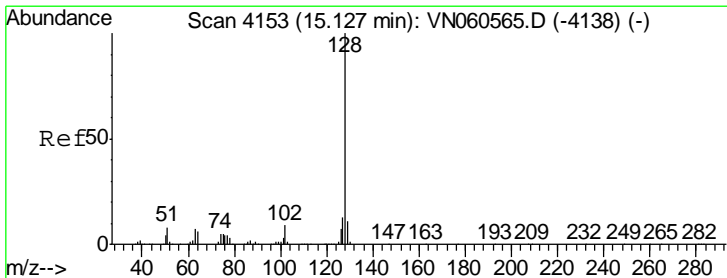
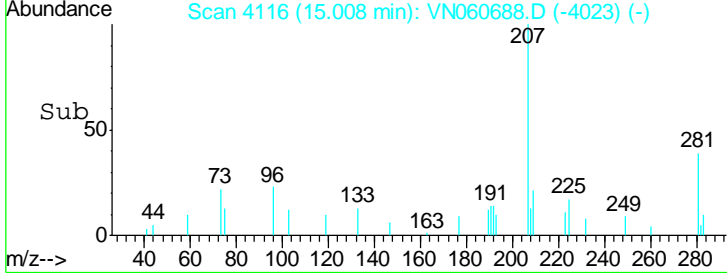
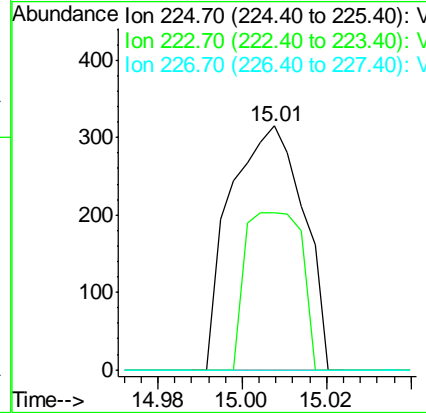
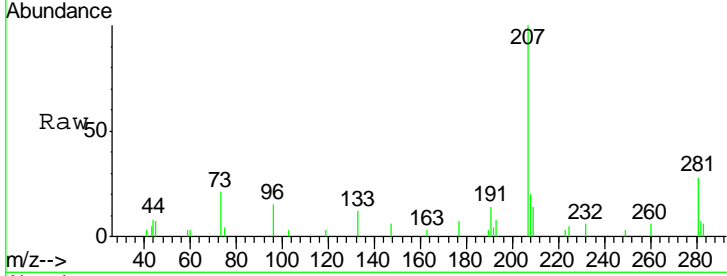




#94  
 Hexachlorobutadiene  
 Concen: 0.321 ug/l  
 RT: 15.01 min Scan# 4116  
 Delta R.T. -0.00 min  
 Lab File: VN060688.D  
 Acq: 25 Mar 2020 11:42

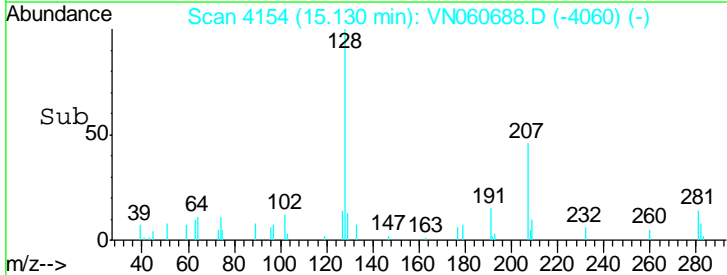
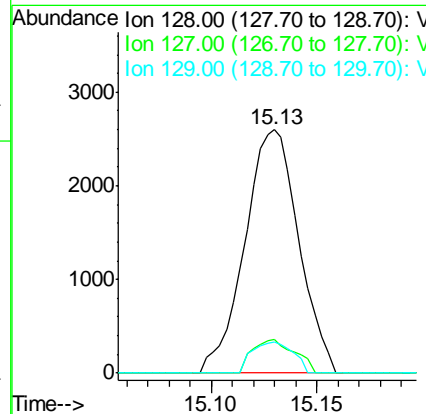
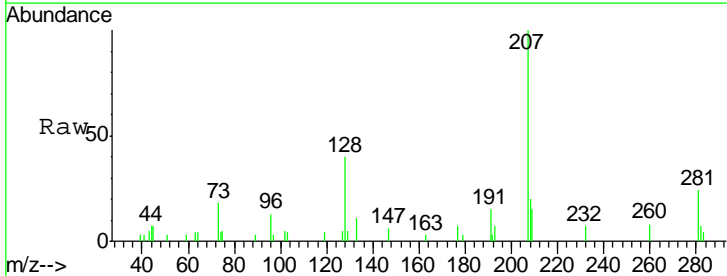
Instrument : MSVOA\_N  
 ClientSampled : VN0325WBL01

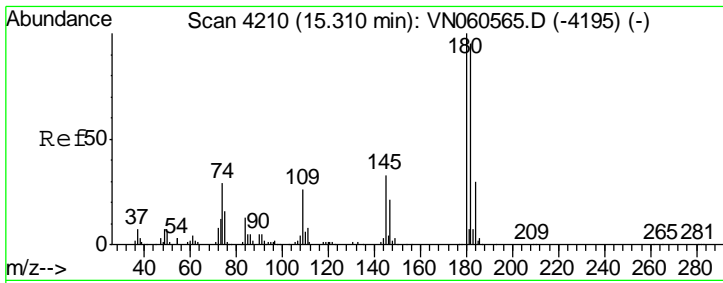
Tgt Ion	Resp	Lower	Upper
225	100		
223	49.5	31.6	95.0
227	0.0	32.3	96.8#



#95  
 Naphthalene  
 Concen: 0.634 ug/l  
 RT: 15.13 min Scan# 4154  
 Delta R.T. 0.00 min  
 Lab File: VN060688.D  
 Acq: 25 Mar 2020 11:42

Tgt Ion	Resp	Lower	Upper
128	100		
127	10.8	10.2	15.2
129	9.8	8.8	13.2





#96  
 1,2,3-Trichlorobenzene  
 Concen: 0.494 ug/l  
 RT: 15.31 min Scan# 4209  
 Delta R.T. -0.00 min  
 Lab File: VN060688.D  
 Acq: 25 Mar 2020 11:42

Instrument : MSVOA\_N  
 ClientSampleId : VN0325WBL01

Tgt Ion	Resp	Lower	Upper
180	1177		
182	86.7	47.5	142.6
145	31.5	16.3	48.8

