

Data Path : Z:\voasrv\HPCHEM1\MSVOA\_N\Data\VN032625\  
 Data File : VN086133.D  
 Acq On : 26 Mar 2025 18:00  
 Operator : JC\MD  
 Sample : Q1641-02  
 Misc : 5.0mL/MSVOA\_N/WATER  
 ALS Vial : 18 Sample Multiplier: 1

Instrument :  
 MSVOA\_N  
 ClientSampleId :  
 NP-WS-003

Quant Time: Mar 27 01:43:24 2025  
 Quant Method : Z:\voasrv\HPCHEM1\MSVOA\_N\methods\82N031825W.M  
 Quant Title : SW846 8260  
 QLast Update : Wed Mar 19 03:20:56 2025  
 Response via : Initial Calibration

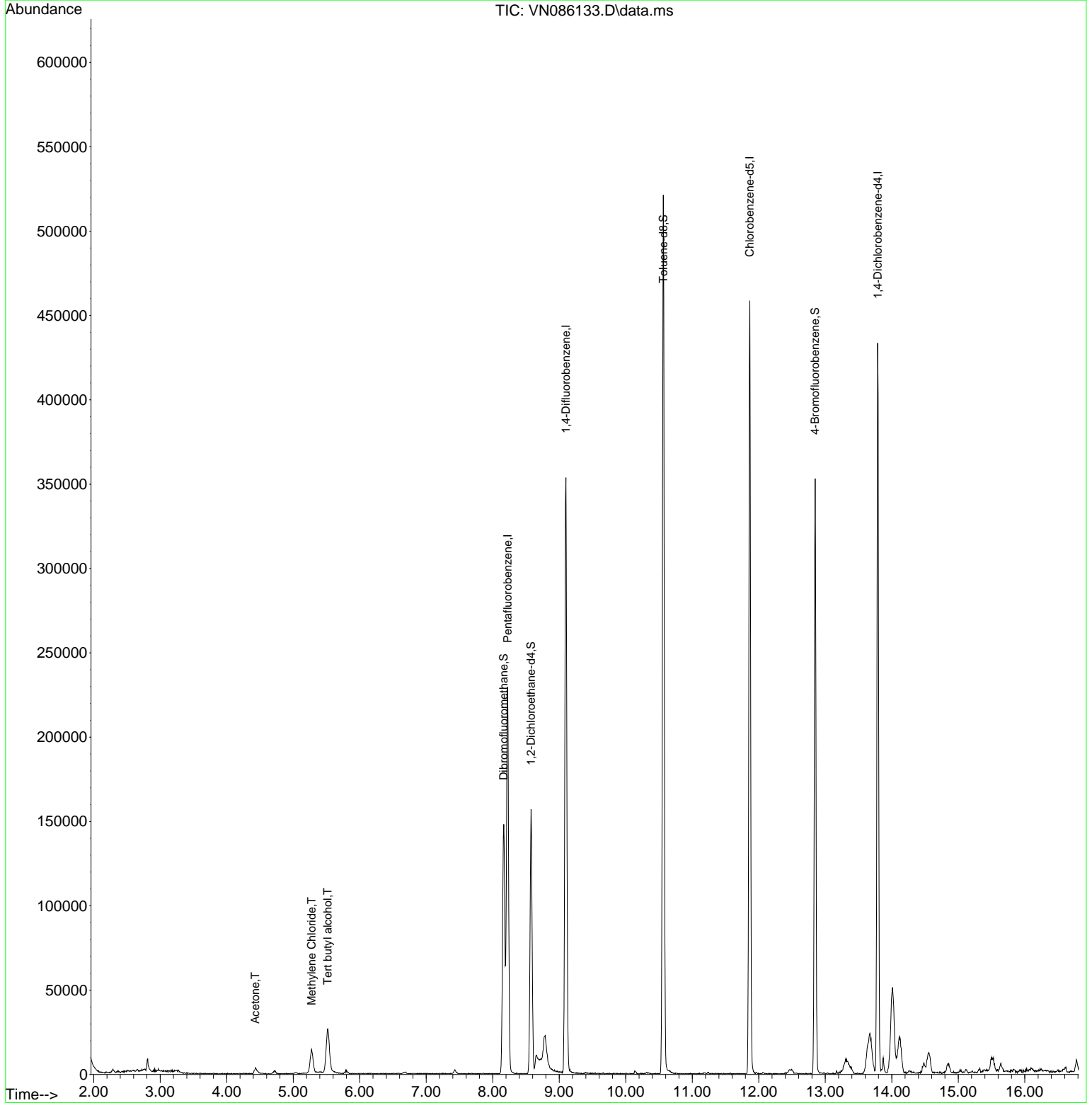
Compound	R.T.	QIon	Response	Conc	Units	Dev(Min)
-----						
Internal Standards						
1) Pentafluorobenzene	8.224	168	168751	50.000	ug/l	0.00
34) 1,4-Difluorobenzene	9.100	114	312504	50.000	ug/l	0.00
63) Chlorobenzene-d5	11.865	117	275427	50.000	ug/l	0.00
72) 1,4-Dichlorobenzene-d4	13.788	152	122103	50.000	ug/l	0.00
System Monitoring Compounds						
33) 1,2-Dichloroethane-d4	8.577	65	125717	54.405	ug/l	0.00
Spiked Amount	50.000	Range	74 - 125	Recovery	=	108.800%
35) Dibromofluoromethane	8.165	113	109372	50.142	ug/l	0.00
Spiked Amount	50.000	Range	75 - 124	Recovery	=	100.280%
50) Toluene-d8	10.565	98	375240	47.400	ug/l	0.00
Spiked Amount	50.000	Range	86 - 113	Recovery	=	94.800%
62) 4-Bromofluorobenzene	12.847	95	128545	45.531	ug/l	0.00
Spiked Amount	50.000	Range	77 - 121	Recovery	=	91.060%
Target Compounds						
						Qvalue
11) Tert butyl alcohol	5.518	59	47221	144.334	ug/l	99
16) Acetone	4.430	43	6471	9.166	ug/l	97
20) Methylene Chloride	5.277	84	11751	5.690	ug/l #	92
-----						

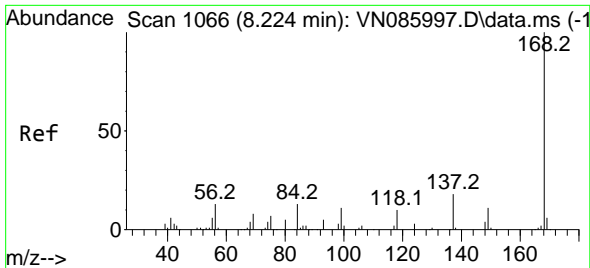
(#) = qualifier out of range (m) = manual integration (+) = signals summed

Data Path : Z:\voasrv\HPCHEM1\MSVOA\_N\Data\VN032625\  
 Data File : VN086133.D  
 Acq On : 26 Mar 2025 18:00  
 Operator : JC\MD  
 Sample : Q1641-02  
 Misc : 5.0mL/MSVOA\_N/WATER  
 ALS Vial : 18 Sample Multiplier: 1

Instrument :  
 MSVOA\_N  
 ClientSampleId :  
 NP-WS-003

Quant Time: Mar 27 01:43:24 2025  
 Quant Method : Z:\voasrv\HPCHEM1\MSVOA\_N\methods\82N031825W.M  
 Quant Title : SW846 8260  
 QLast Update : Wed Mar 19 03:20:56 2025  
 Response via : Initial Calibration

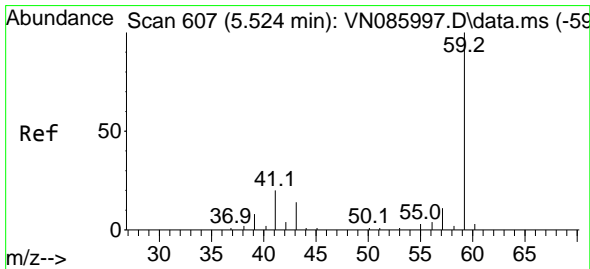
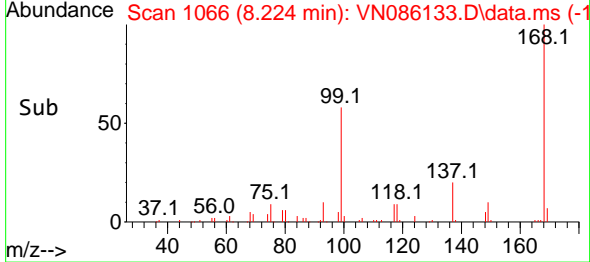
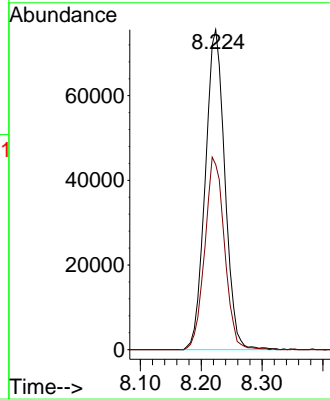
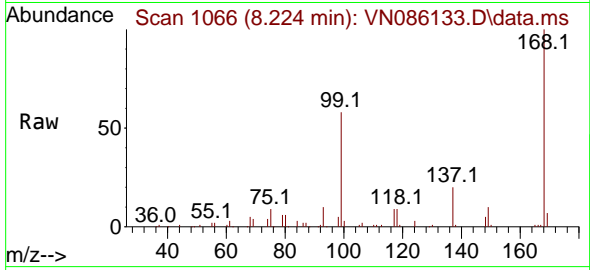




#1  
 Pentafluorobenzene  
 Concen: 50.000 ug/l  
 RT: 8.224 min Scan# 1066  
 Delta R.T. -0.000 min  
 Lab File: VN086133.D  
 Acq: 26 Mar 2025 18:00

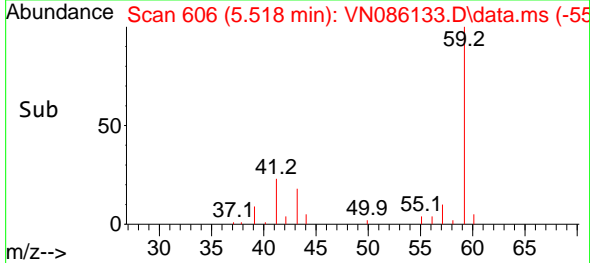
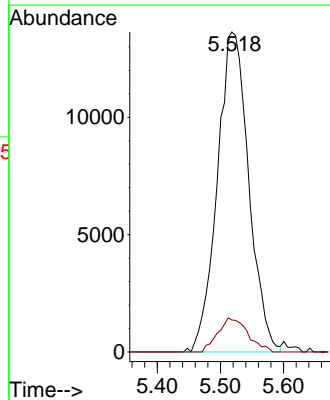
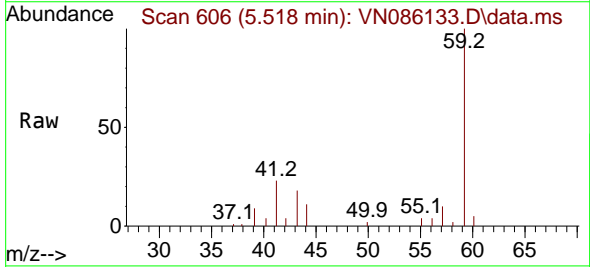
Instrument :  
 MSVOA\_N  
 ClientSampleId :  
 NP-WS-003

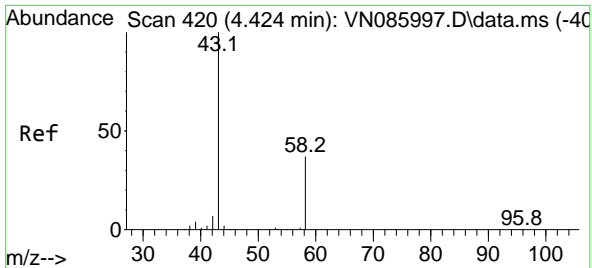
Tgt Ion:168 Resp: 168751  
 Ion Ratio Lower Upper  
 168 100  
 99 57.8 49.4 74.2



#11  
 Tert butyl alcohol  
 Concen: 144.334 ug/l  
 RT: 5.518 min Scan# 606  
 Delta R.T. -0.006 min  
 Lab File: VN086133.D  
 Acq: 26 Mar 2025 18:00

Tgt Ion: 59 Resp: 47221  
 Ion Ratio Lower Upper  
 59 100  
 57 10.1 7.9 11.9

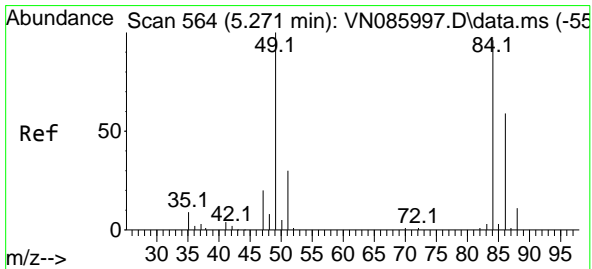
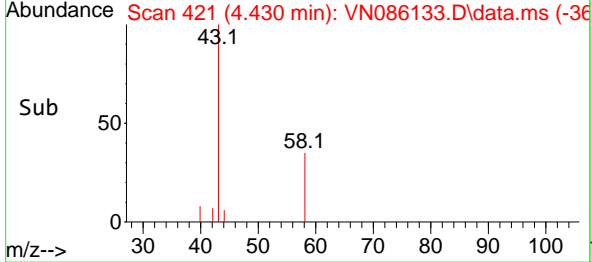
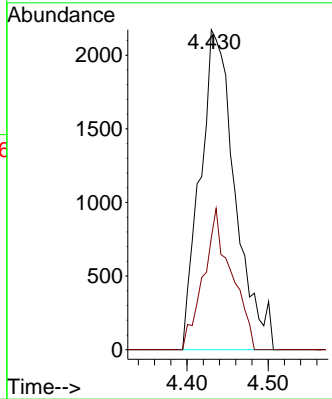
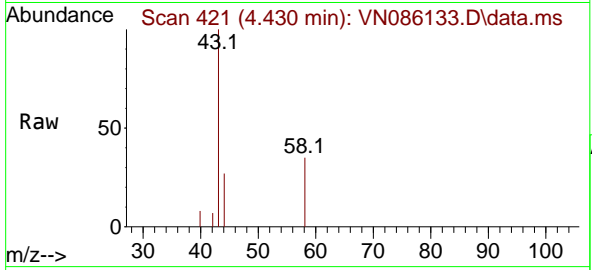




#16  
 Acetone  
 Concen: 9.166 ug/l  
 RT: 4.430 min Scan# 41  
 Delta R.T. 0.006 min  
 Lab File: VN086133.D  
 Acq: 26 Mar 2025 18:00

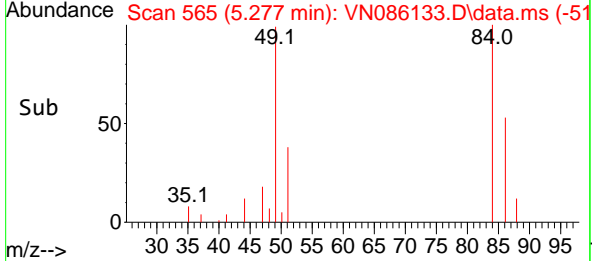
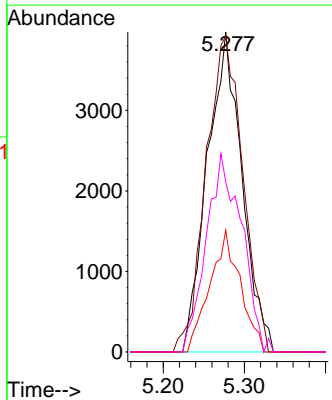
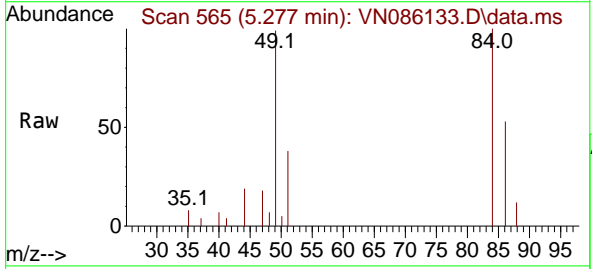
Instrument : MSVOA\_N  
 ClientSampleId : NP-WS-003

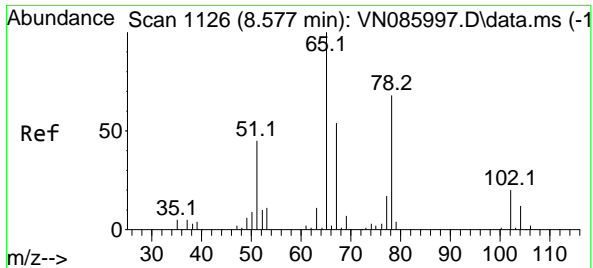
Tgt Ion	Resp	Lower	Upper
43	6471	100	
58	35.0	29.4	44.2



#20  
 Methylene Chloride  
 Concen: 5.690 ug/l  
 RT: 5.277 min Scan# 565  
 Delta R.T. 0.006 min  
 Lab File: VN086133.D  
 Acq: 26 Mar 2025 18:00

Tgt Ion	Resp	Lower	Upper
84	11751	100	
49	98.9	83.3	124.9
51	38.1	24.8	37.2#
86	53.2	48.7	73.1

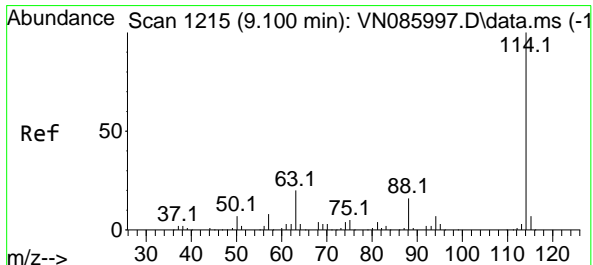
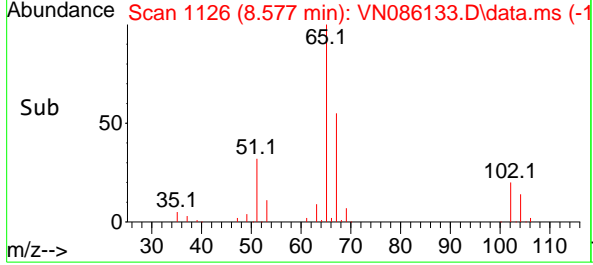
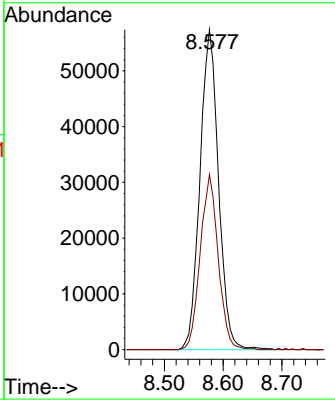
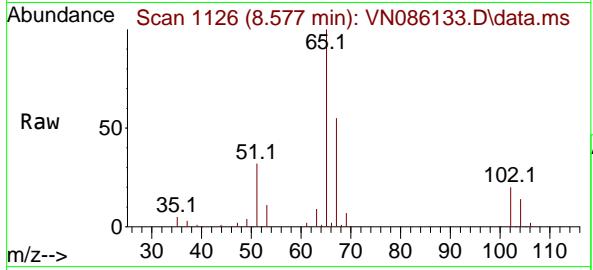




#33  
 1,2-Dichloroethane-d4  
 Concen: 54.405 ug/l  
 RT: 8.577 min Scan# 1126  
 Delta R.T. -0.000 min  
 Lab File: VN086133.D  
 Acq: 26 Mar 2025 18:00

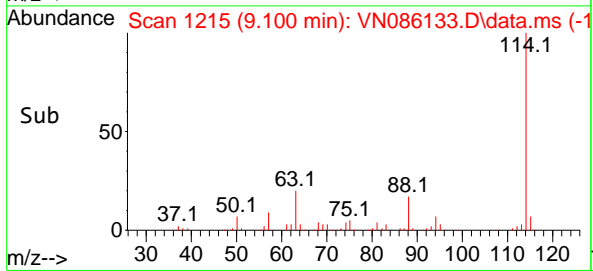
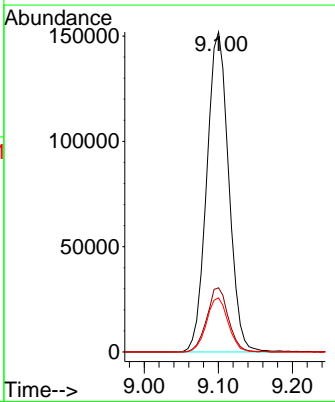
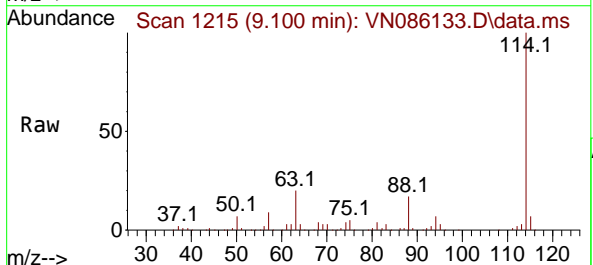
Instrument : MSVOA\_N  
 ClientSampleId : NP-WS-003

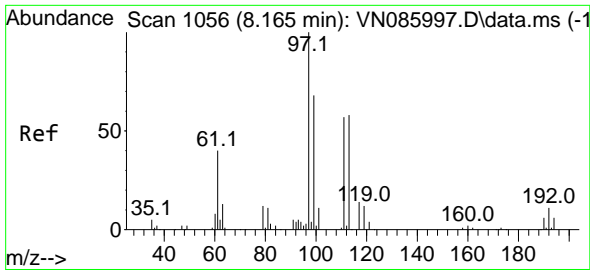
Tgt Ion: 65 Resp: 125717  
 Ion Ratio Lower Upper  
 65 100  
 67 52.9 0.0 102.2



#34  
 1,4-Difluorobenzene  
 Concen: 50.000 ug/l  
 RT: 9.100 min Scan# 1215  
 Delta R.T. -0.000 min  
 Lab File: VN086133.D  
 Acq: 26 Mar 2025 18:00

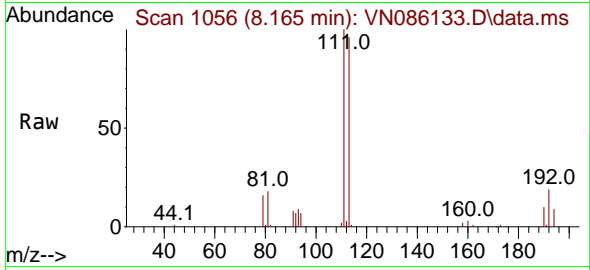
Tgt Ion:114 Resp: 312504  
 Ion Ratio Lower Upper  
 114 100  
 63 20.1 0.0 39.6  
 88 16.9 0.0 32.6



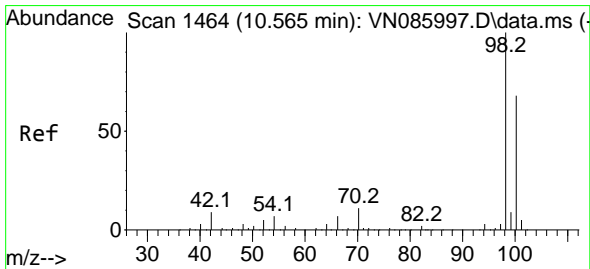
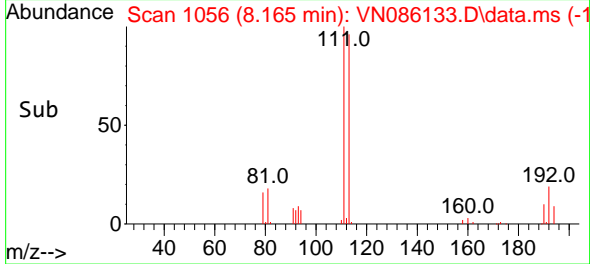
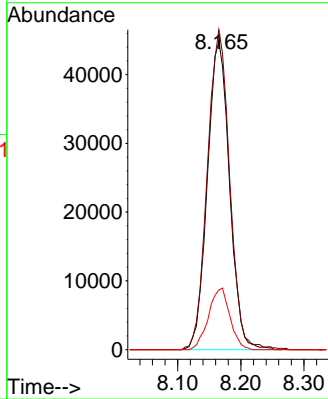


#35  
 Dibromofluoromethane  
 Concen: 50.142 ug/l  
 RT: 8.165 min Scan# 1056  
 Delta R.T. -0.000 min  
 Lab File: VN086133.D  
 Acq: 26 Mar 2025 18:00

Instrument : MSVOA\_N  
 ClientSampleId : NP-WS-003

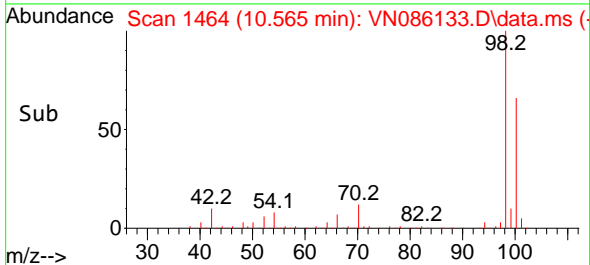
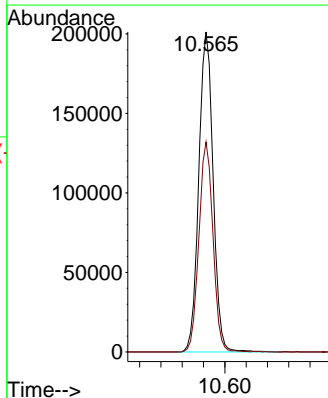
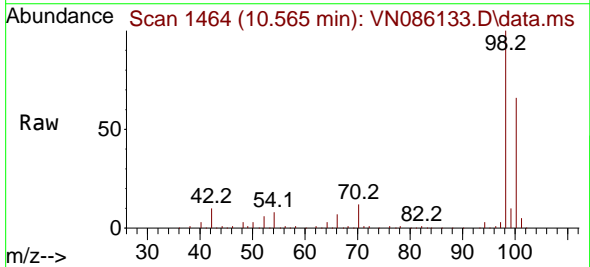


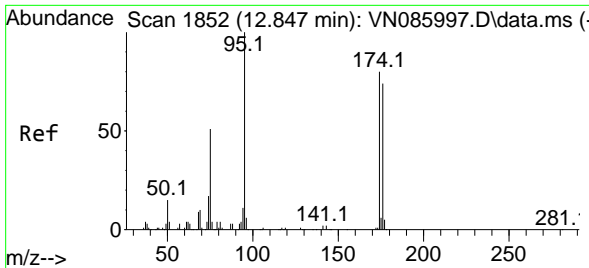
Tgt Ion:113 Resp: 109372  
 Ion Ratio Lower Upper  
 113 100  
 111 104.4 81.8 122.8  
 192 19.3 15.9 23.9



#50  
 Toluene-d8  
 Concen: 47.400 ug/l  
 RT: 10.565 min Scan# 1464  
 Delta R.T. -0.000 min  
 Lab File: VN086133.D  
 Acq: 26 Mar 2025 18:00

Tgt Ion: 98 Resp: 375240  
 Ion Ratio Lower Upper  
 98 100  
 100 64.4 53.1 79.7

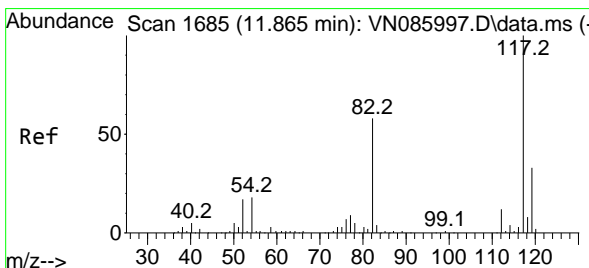
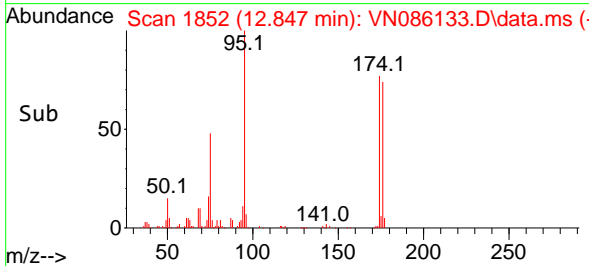
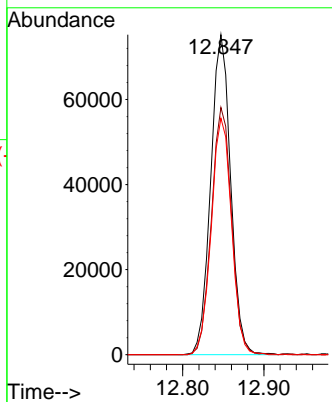
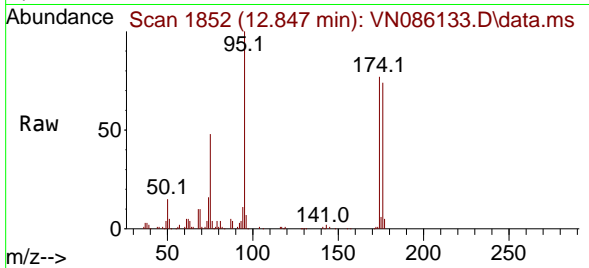




#62  
 4-Bromofluorobenzene  
 Concen: 45.531 ug/l  
 RT: 12.847 min Scan# 1852  
 Delta R.T. -0.000 min  
 Lab File: VN086133.D  
 Acq: 26 Mar 2025 18:00

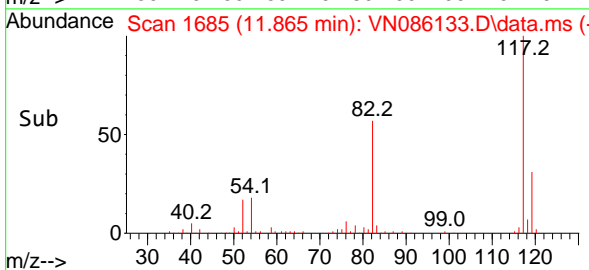
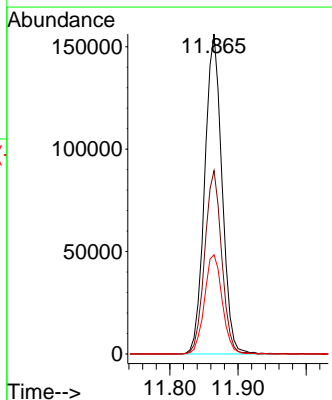
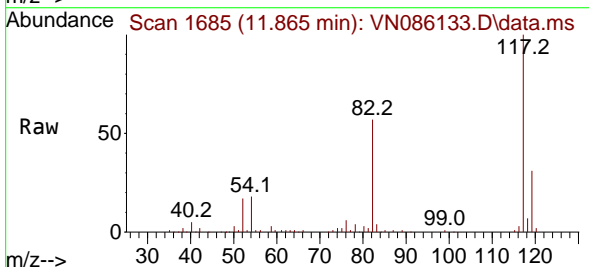
Instrument : MSVOA\_N  
 ClientSampleId : NP-WS-003

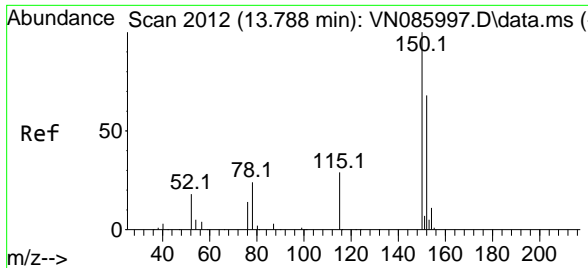
Tgt Ion	Resp	Lower	Upper
95	128545	100	
174	78.4	0.0	156.8
176	75.0	0.0	152.2



#63  
 Chlorobenzene-d5  
 Concen: 50.000 ug/l  
 RT: 11.865 min Scan# 1685  
 Delta R.T. -0.000 min  
 Lab File: VN086133.D  
 Acq: 26 Mar 2025 18:00

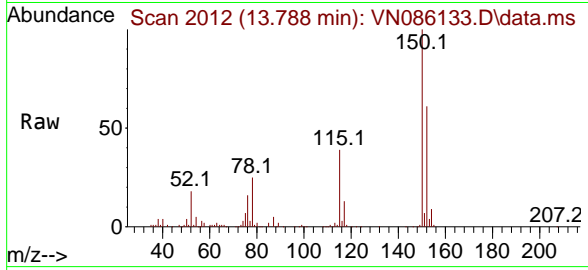
Tgt Ion	Resp	Lower	Upper
117	275427	100	
82	57.3	46.7	70.1
119	31.0	26.5	39.7





#72  
 1,4-Dichlorobenzene-d4  
 Concen: 50.000 ug/l  
 RT: 13.788 min Scan# 20  
 Delta R.T. -0.000 min  
 Lab File: VN086133.D  
 Acq: 26 Mar 2025 18:00

Instrument :  
 MSVOA\_N  
 ClientSampleId :  
 NP-WS-003



Tgt Ion:152 Resp: 122103

Ion	Ratio	Lower	Upper
152	100		
115	61.3	31.1	93.2
150	157.8	0.0	359.6

