

Data Path : Z:\VOASRV\HPCHEM1\MSVOA N\DATA\VN032819\  
 Data File : VN054742.D  
 Acq On : 28 Mar 2019 14:13  
 Operator : JC/SP  
 Sample : K2107-12  
 Misc : 5.00mL/MSVOA N/WATER  
 ALS Vial : 11 Sample Multiplier: 1

Instrument :  
 MSVOA\_N  
 ClientSampleId :  
 TP-6

Quant Time: Mar 29 06:59:45 2019  
 Quant Method : Z:\VOASRV\HPCHEM1\MSVOA\_N\METHODS\82N032019W.M  
 Quant Title : SW846 8260  
 QLast Update : Fri Mar 22 02:09:07 2019  
 Response via : Initial Calibration

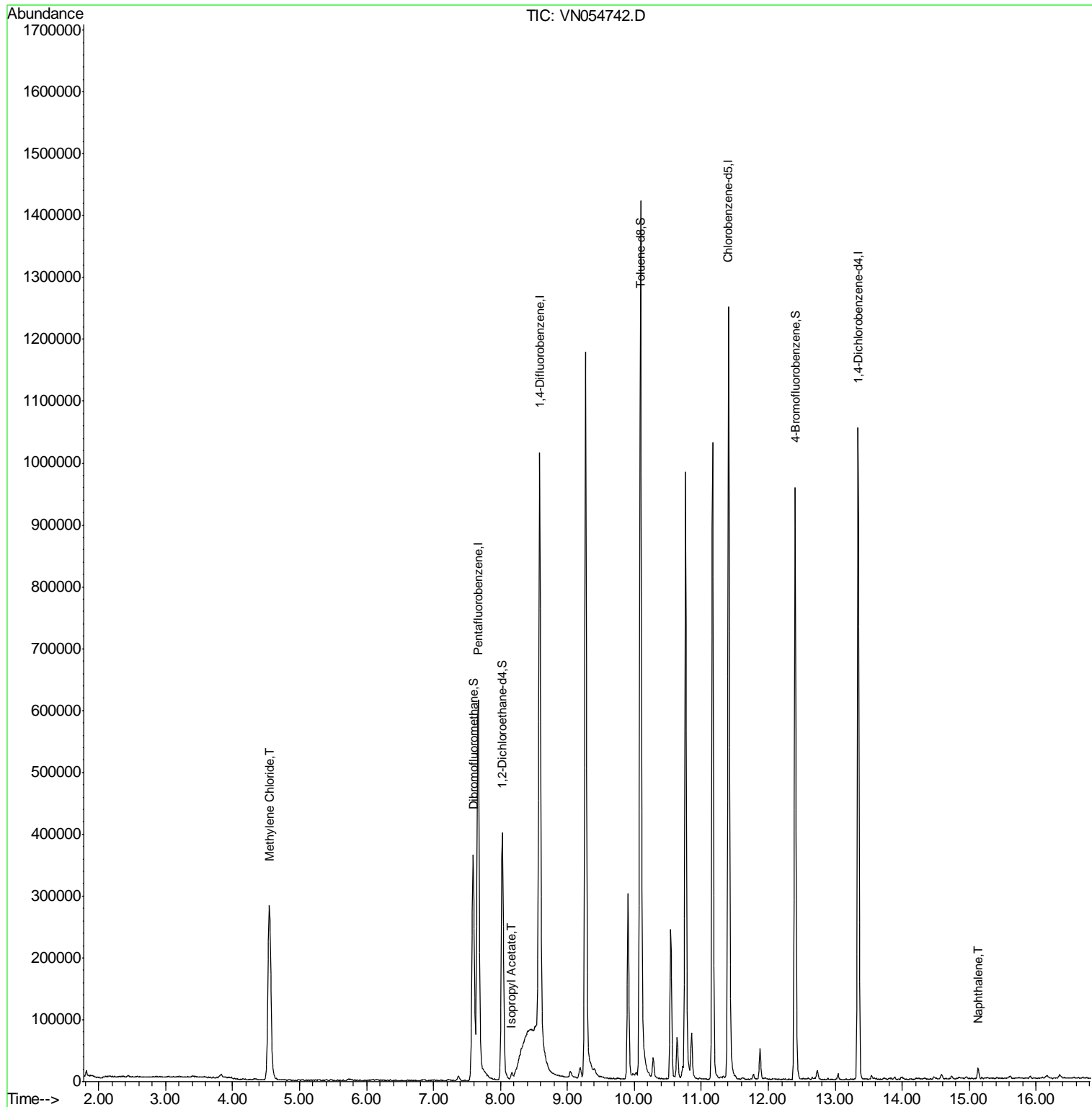
Internal Standards	R.T.	QIon	Response	Conc	Units	Dev(Min)
1) Pentafluorobenzene	7.67	168	524156	50.00	ug/l	0.00
34) 1,4-Difluorobenzene	8.59	114	865561	50.00	ug/l	0.00
63) Chlorobenzene-d5	11.41	117	742984	50.00	ug/l	0.00
72) 1,4-Dichlorobenzene-d4	13.34	152	275091	50.00	ug/l	0.00
System Monitoring Compounds						
33) 1,2-Dichloroethane-d4	8.03	65	348452	53.45	ug/l	0.00
Spiked Amount	50.000		Recovery	=	106.90%	
35) Dibromofluoromethane	7.59	113	271489	48.69	ug/l	0.00
Spiked Amount	50.000		Recovery	=	97.38%	
50) Toluene-d8	10.09	98	1037346	49.48	ug/l	0.00
Spiked Amount	50.000		Recovery	=	98.96%	
62) 4-Bromofluorobenzene	12.40	95	328692	46.08	ug/l	0.00
Spiked Amount	50.000		Recovery	=	92.16%	
Target Compounds						
20) Methylene Chloride	4.55	84	203292	35.183	ug/l #	81
43) Isopropyl Acetate	8.17	43	13260	1.364	ug/l #	96
95) Naphthalene	15.13	128	13373	1.363	ug/l	99

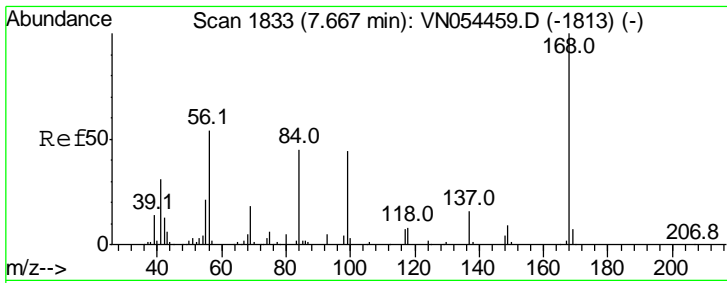
(#) = qualifier out of range (m) = manual integration (+) = signals summed

Data Path : Z:\VOASRV\HPCHEM1\MSVOA N\DATA\VN032819\  
 Data File : VN054742.D  
 Acq On : 28 Mar 2019 14:13  
 Operator : JC/SP  
 Sample : K2107-12  
 Misc : 5.00mL/MSVOA N/WATER  
 ALS Vial : 11 Sample Multiplier: 1

Instrument :  
 MSVOA\_N  
 ClientSampled :  
 TP-6

Quant Time: Mar 29 06:59:45 2019  
 Quant Method : Z:\VOASRV\HPCHEM1\MSVOA\_N\METHODS\82N032019W.M  
 Quant Title : SW846 8260  
 QLast Update : Fri Mar 22 02:09:07 2019  
 Response via : Initial Calibration

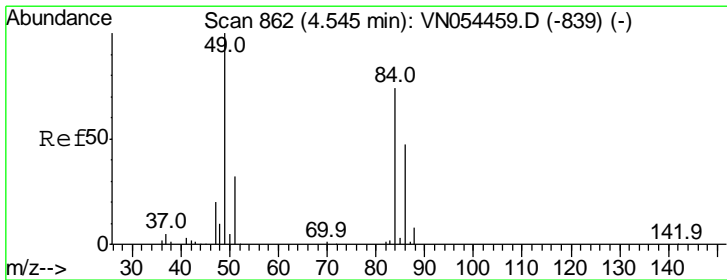
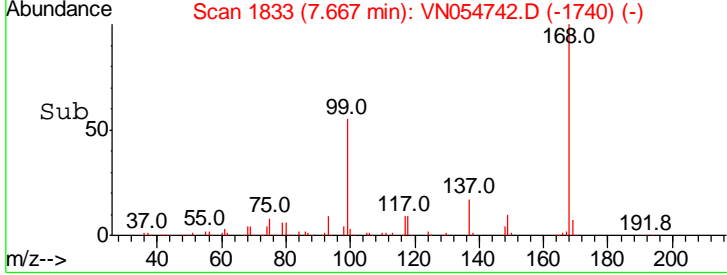
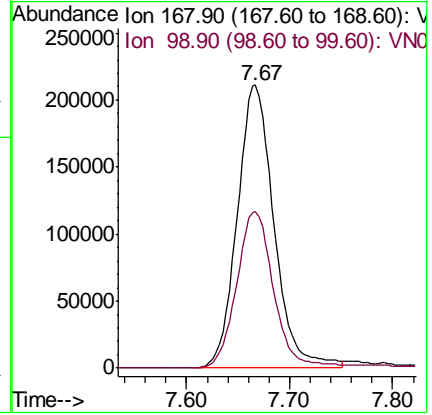
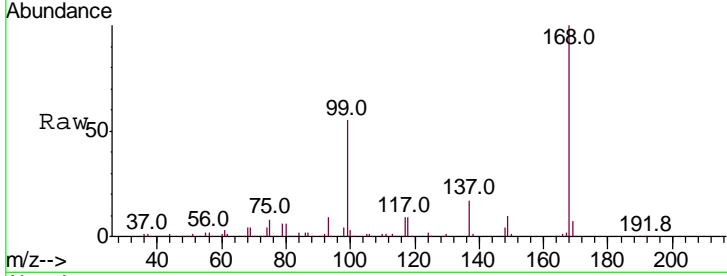




#1  
 Pentafluorobenzene  
 Concen: 50.000 ug/l  
 RT: 7.67 min Scan# 1833  
 Delta R.T. 0.00 min  
 Lab File: VN054742.D  
 Acq: 28 Mar 2019 14:13

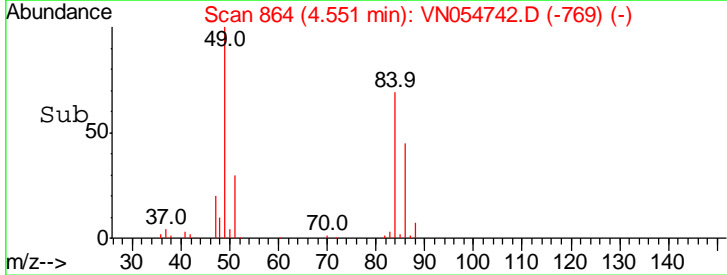
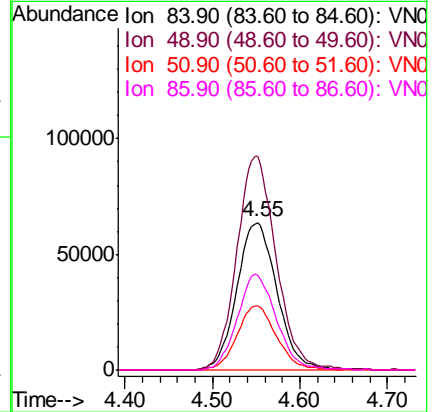
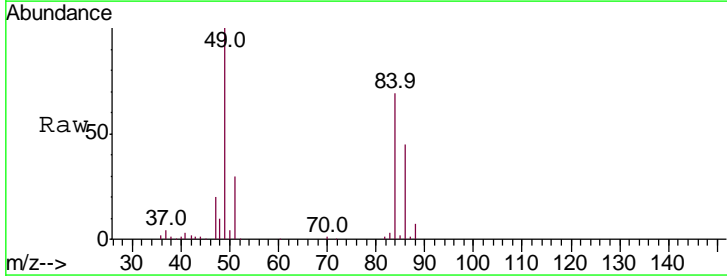
Instrument : MSVOA\_N  
 Client Sampled : TP-6

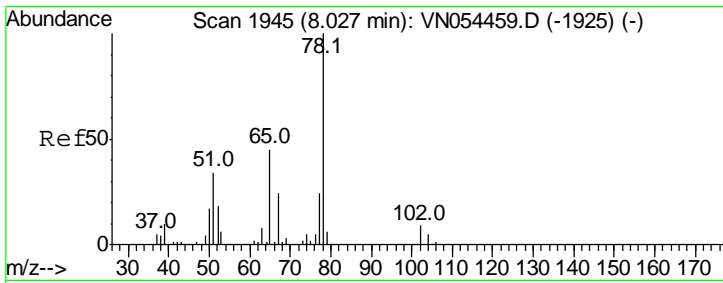
Tgt Ion	Resp	Lower	Upper
168	100		
99	55.4	37.1	55.7



#20  
 Methylene Chloride  
 Concen: 35.183 ug/l  
 RT: 4.55 min Scan# 864  
 Delta R.T. 0.01 min  
 Lab File: VN054742.D  
 Acq: 28 Mar 2019 14:13

Tgt Ion	Resp	Lower	Upper
84	100		
49	145.1	89.7	134.5#
51	43.9	28.2	42.4#
86	64.8	50.8	76.2

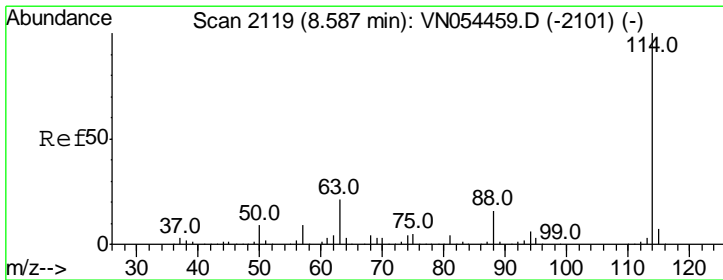
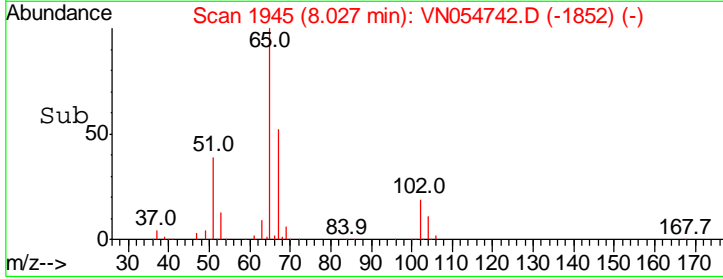
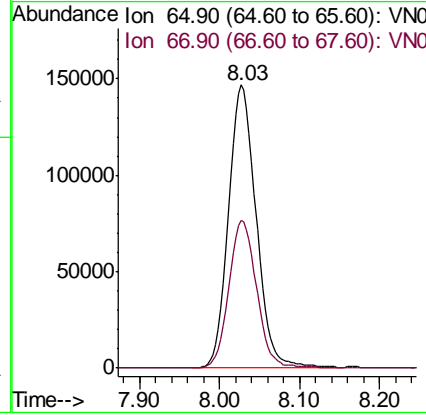
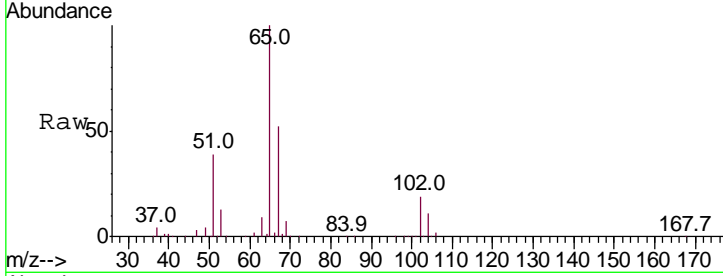




#33  
 1,2-Dichloroethane-d4  
 Concen: 53.446 ug/l  
 RT: 8.03 min Scan# 1945  
 Delta R.T. 0.00 min  
 Lab File: VN054742.D  
 Acq: 28 Mar 2019 14:13

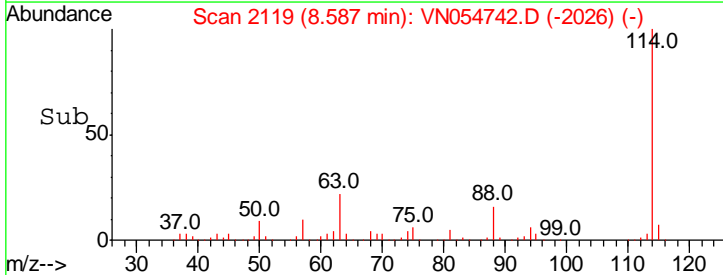
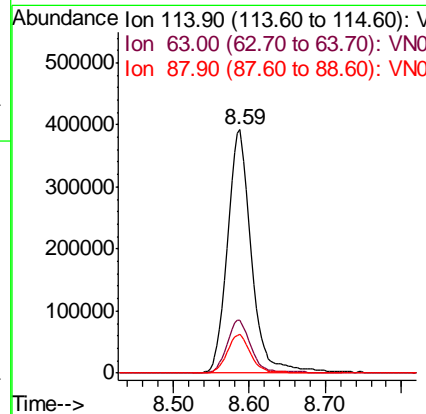
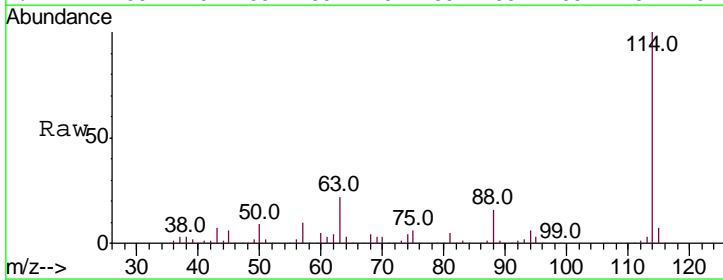
Instrument :  
 MSVOA\_N  
 ClientSampled :  
 TP-6

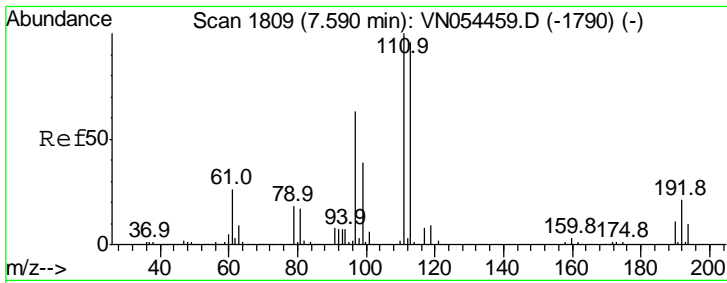
Tgt Ion	Resp	Lower	Upper
65	100		
67	52.3	0.0	104.6



#34  
 1,4-Difluorobenzene  
 Concen: 50.000 ug/l  
 RT: 8.59 min Scan# 2119  
 Delta R.T. 0.00 min  
 Lab File: VN054742.D  
 Acq: 28 Mar 2019 14:13

Tgt Ion	Resp	Lower	Upper
114	100		
63	21.9	0.0	35.2
88	15.9	0.0	30.2

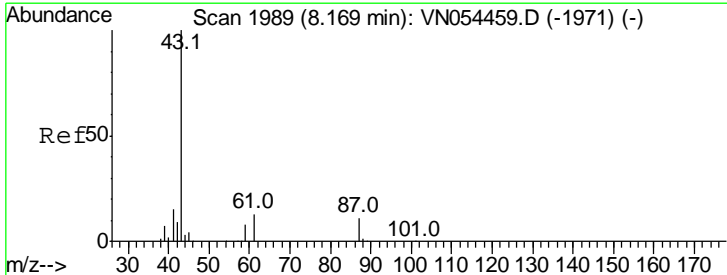
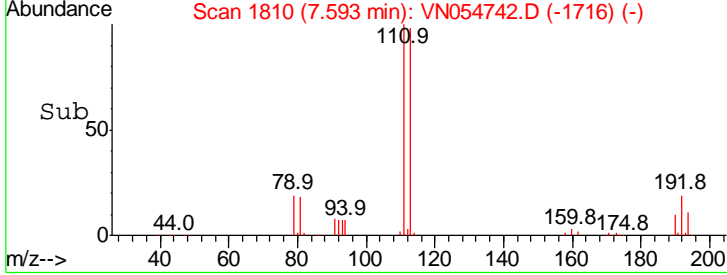
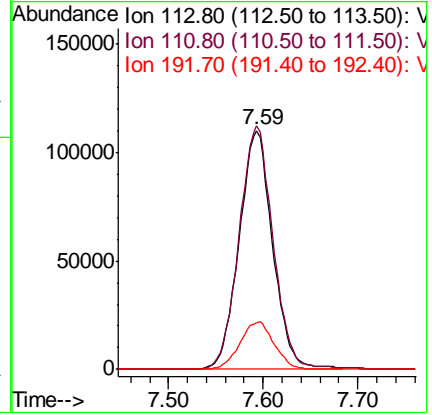
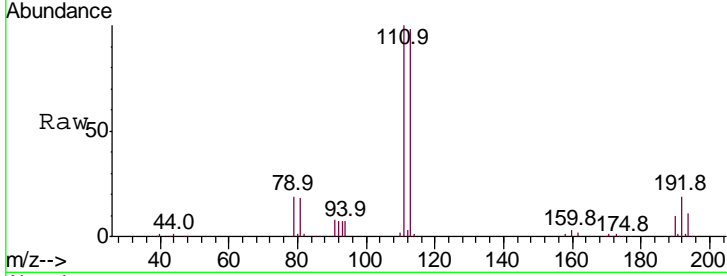




#35  
 Dibromofluoromethane  
 Concen: 48.686 ug/l  
 RT: 7.59 min Scan# 1810  
 Delta R.T. 0.00 min  
 Lab File: VN054742.D  
 Acq: 28 Mar 2019 14:13

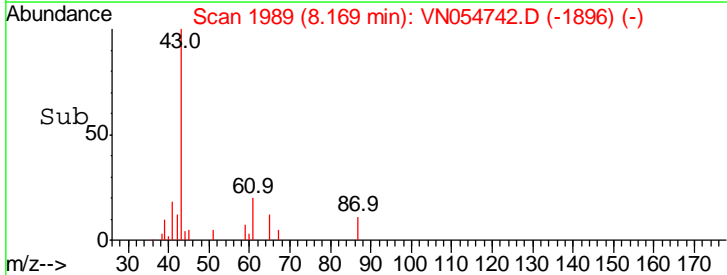
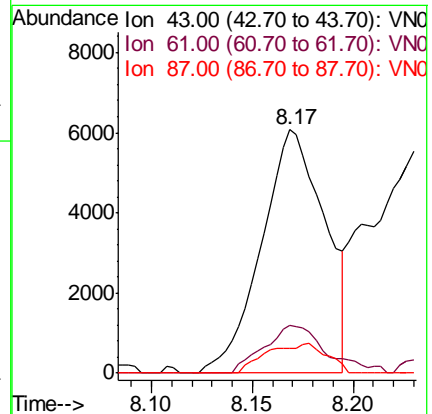
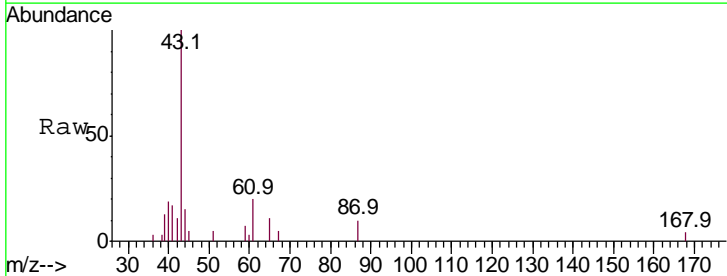
Instrument :  
 MSVOA\_N  
 ClientSampled :  
 TP-6

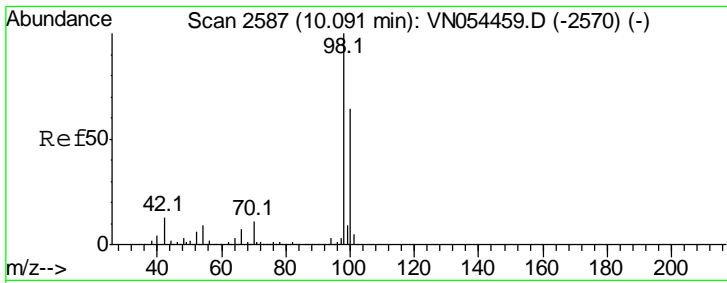
Tgt Ion	Resp	Lower	Upper
113	100		
111	103.8	82.2	123.4
192	20.4	19.2	28.8



#43  
 Isopropyl Acetate  
 Concen: 1.364 ug/l  
 RT: 8.17 min Scan# 1989  
 Delta R.T. 0.00 min  
 Lab File: VN054742.D  
 Acq: 28 Mar 2019 14:13

Tgt Ion	Resp	Lower	Upper
43	100		
61	19.3	15.8	23.8
87	11.7	12.0	18.0#

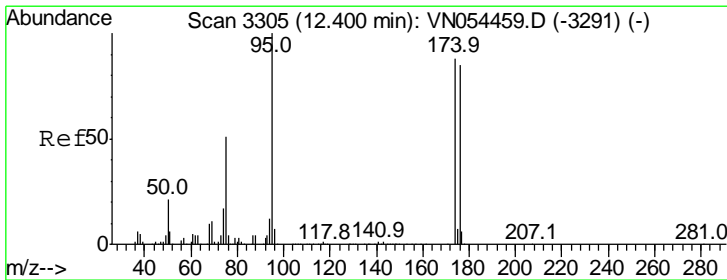
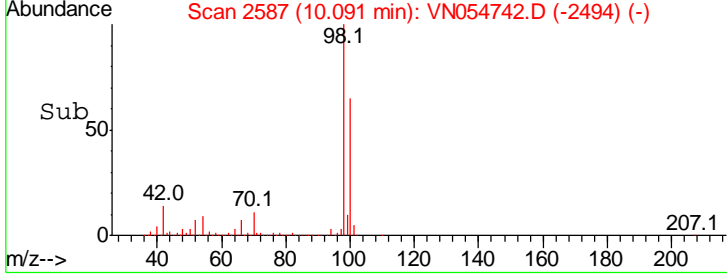
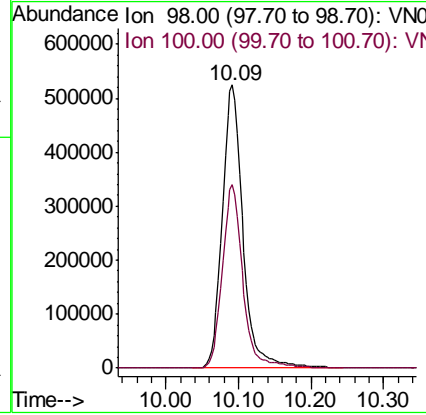
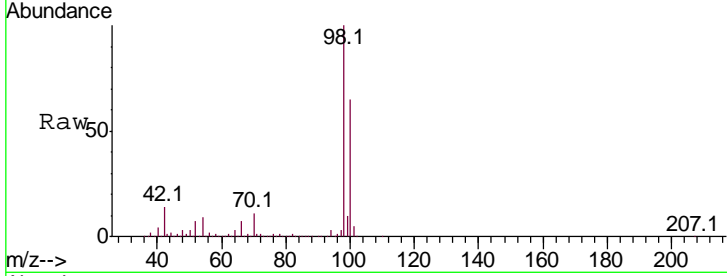




#50  
 Toluene-d8  
 Concen: 49.483 ug/l  
 RT: 10.09 min Scan# 2587  
 Delta R.T. 0.00 min  
 Lab File: VN054742.D  
 Acq: 28 Mar 2019 14:13

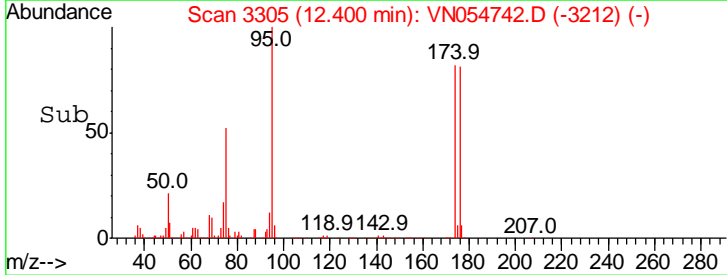
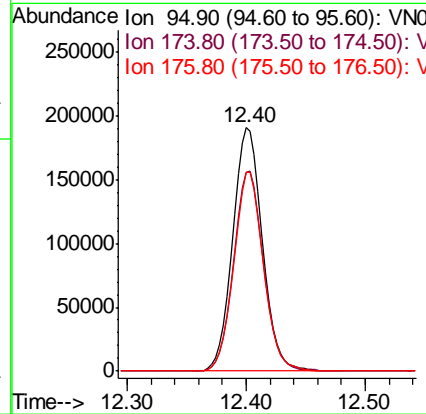
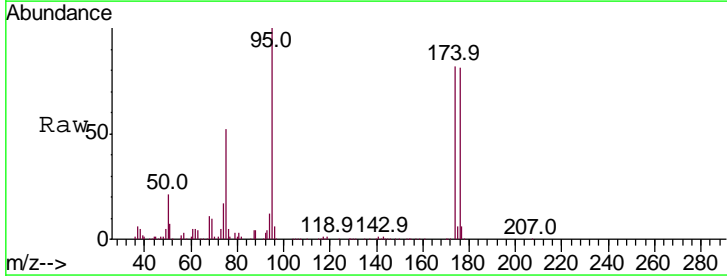
Instrument : MSVOA\_N  
 ClientSampled : TP-6

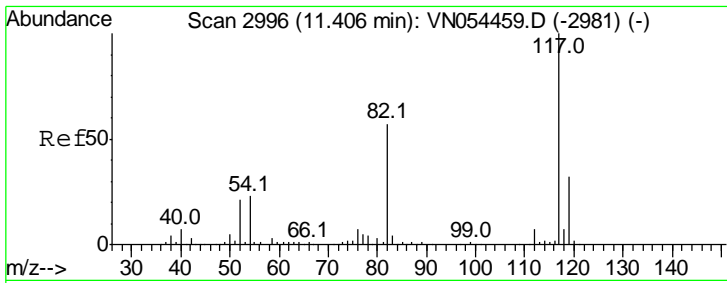
Tgt Ion	Resp	Lower	Upper
98	1037346		
98	100		
100	64.1	51.2	76.8



#62  
 4-Bromofluorobenzene  
 Concen: 46.077 ug/l  
 RT: 12.40 min Scan# 3305  
 Delta R.T. 0.00 min  
 Lab File: VN054742.D  
 Acq: 28 Mar 2019 14:13

Tgt Ion	Resp	Lower	Upper
95	328692		
95	100		
174	83.1	0.0	191.0
176	81.7	0.0	187.4

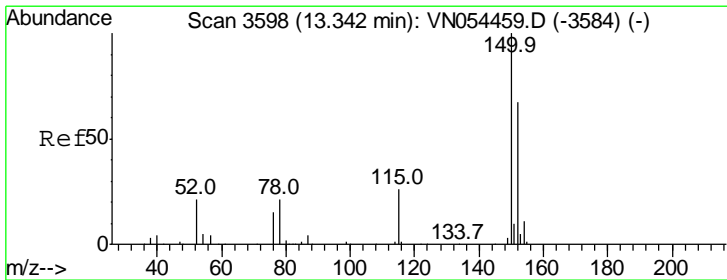
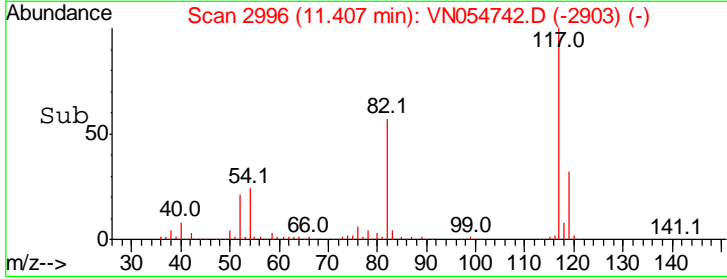
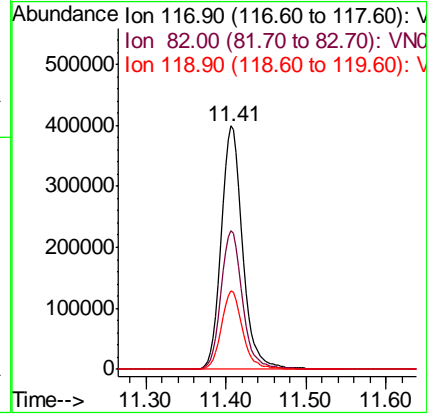
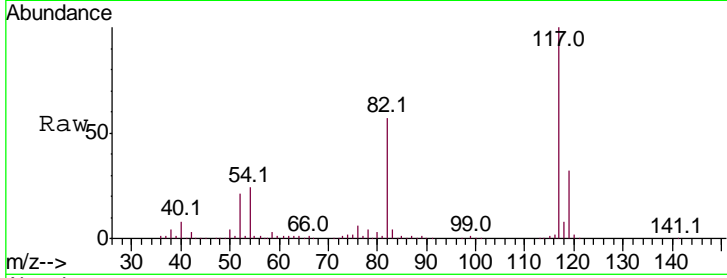




#63  
 Chlorobenzene-d5  
 Concen: 50.000 ug/l  
 RT: 11.41 min Scan# 2996  
 Delta R.T. 0.00 min  
 Lab File: VN054742.D  
 Acq: 28 Mar 2019 14:13

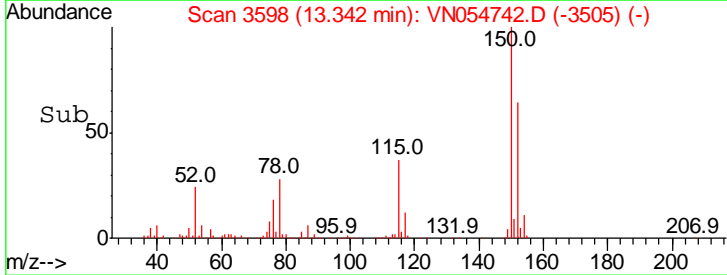
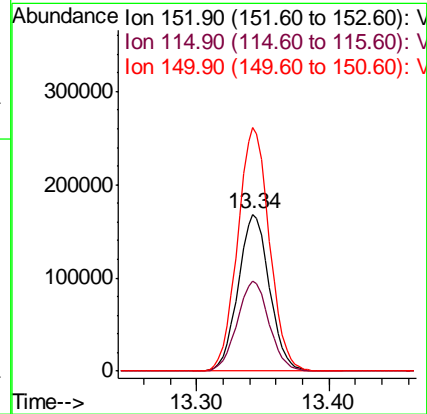
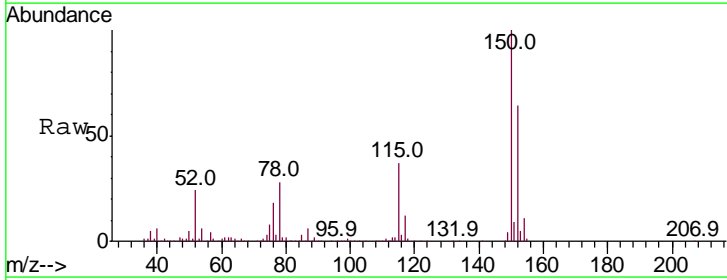
Instrument :  
 MSVOA\_N  
 ClientSampled :  
 TP-6

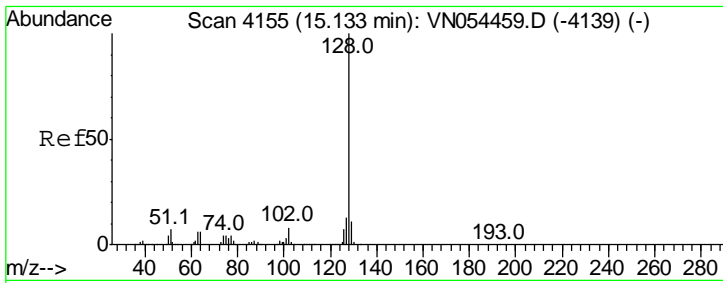
Tgt Ion	Resp	Lower	Upper
117	100		
82	56.9	40.0	60.0
119	32.3	25.8	38.6



#72  
 1,4-Dichlorobenzene-d4  
 Concen: 50.000 ug/l  
 RT: 13.34 min Scan# 3598  
 Delta R.T. 0.00 min  
 Lab File: VN054742.D  
 Acq: 28 Mar 2019 14:13

Tgt Ion	Resp	Lower	Upper
152	100		
115	58.3	27.2	81.6
150	157.4	0.0	349.2





#95  
 Naphthalene  
 Concen: 1.363 ug/l  
 RT: 15.13 min Scan# 4155  
 Delta R.T. 0.00 min  
 Lab File: VN054742.D  
 Acq: 28 Mar 2019 14:13

Instrument : MSVOA\_N  
 ClientSampled : TP-6

Tot Ion:128 Resp: 13373

Ion	Ratio	Lower	Upper
128	100		
127	12.0	10.1	15.1
129	10.6	8.7	13.1

