

Data Path : Z:\voasrv\HPCHEM1\MSVOA_N\Data\VN032921\
 Data File : VN066401.D
 Acq On : 30 Mar 2021 1:34
 Operator : JC/MD
 Sample : PB135367ZHE#08
 Misc : 5.00mL/MSVOA_N/WATER
 ALS Vial : 41 Sample Multiplier: 1

Instrument :
 MSVOA_N
 ClientSampleId :
 PB135367ZHE#08

Quant Time: Mar 30 07:08:01 2021
 Quant Method : Z:\voasrv\HPCHEM1\MSVOA_N\methods\82N032521W.M
 Quant Title : SW846 8260
 QLast Update : Fri Mar 26 16:26:01 2021
 Response via : Initial Calibration

Compound	R.T.	QIon	Response	Conc	Units	Dev(Min)

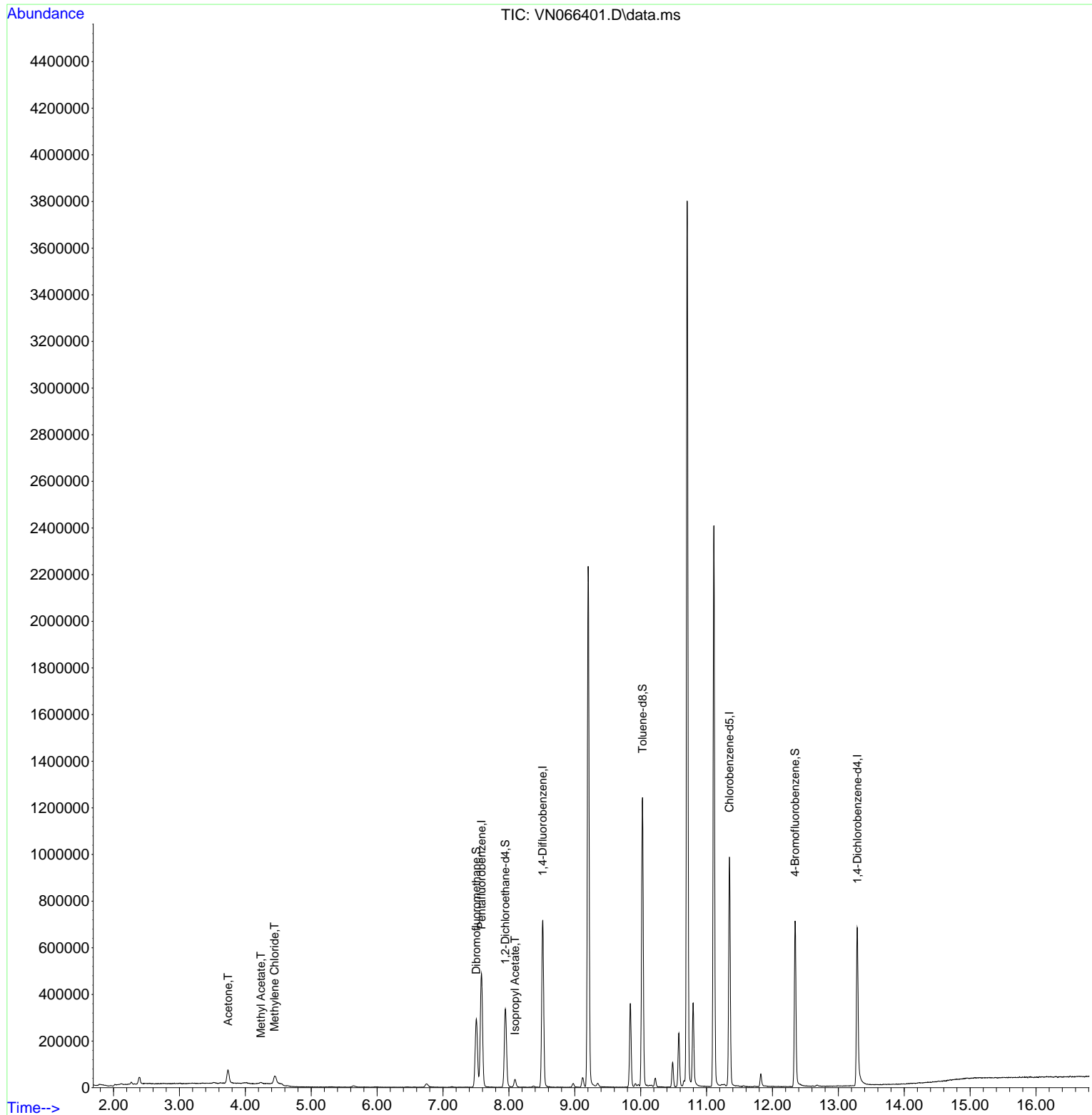
Internal Standards						
1) Pentafluorobenzene	7.585	168	412720	50.00	ug/l	0.00
34) 1,4-Difluorobenzene	8.515	114	629655	50.00	ug/l	0.00
63) Chlorobenzene-d5	11.347	117	546102	50.00	ug/l	0.00
72) 1,4-Dichlorobenzene-d4	13.289	152	214083	50.00	ug/l	0.00
System Monitoring Compounds						
33) 1,2-Dichloroethane-d4	7.947	65	285041	51.95	ug/l	0.00
Spiked Amount	50.000	Range 78 - 117	Recovery	=	103.90%	
35) Dibromofluoromethane	7.507	113	220392	52.80	ug/l	0.00
Spiked Amount	50.000	Range 75 - 124	Recovery	=	105.60%	
50) Toluene-d8	10.028	98	838288	52.95	ug/l	0.00
Spiked Amount	50.000	Range 92 - 112	Recovery	=	105.90%	
62) 4-Bromofluorobenzene	12.345	95	240655	43.76	ug/l	0.00
Spiked Amount	50.000	Range 83 - 123	Recovery	=	87.52%	
Target Compounds						
						Qvalue
16) Acetone	3.739	43	92564	31.23	ug/l	95
18) Methyl Acetate	4.237	43	9212	1.19	ug/l #	66
20) Methylene Chloride	4.444	84	22652	3.08	ug/l	97
43) Isopropyl Acetate	8.094	43	41433	3.72	ug/l	99

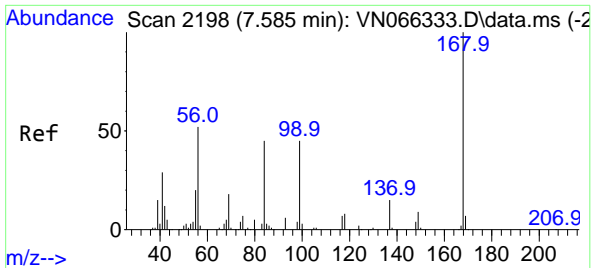
(#) = qualifier out of range (m) = manual integration (+) = signals summed

Data Path : Z:\voasrv\HPCHEM1\MSVOA_N\Data\VN032921\
 Data File : VN066401.D
 Acq On : 30 Mar 2021 1:34
 Operator : JC/MD
 Sample : PB135367ZHE#08
 Misc : 5.00mL/MSVOA_N/WATER
 ALS Vial : 41 Sample Multiplier: 1

Instrument :
 MSVOA_N
 ClientSampleId :
 PB135367ZHE#08

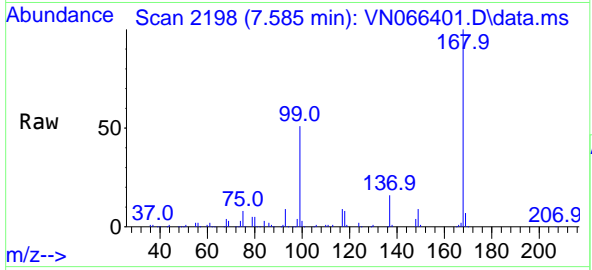
Quant Time: Mar 30 07:08:01 2021
 Quant Method : Z:\voasrv\HPCHEM1\MSVOA_N\methods\82N032521W.M
 Quant Title : SW846 8260
 QLast Update : Fri Mar 26 16:26:01 2021
 Response via : Initial Calibration



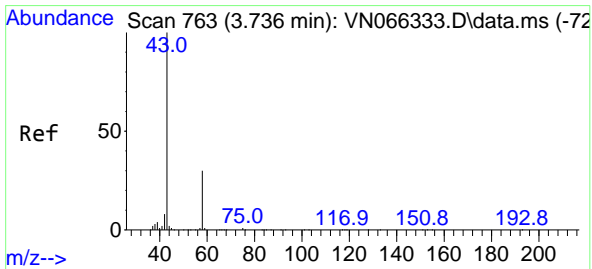
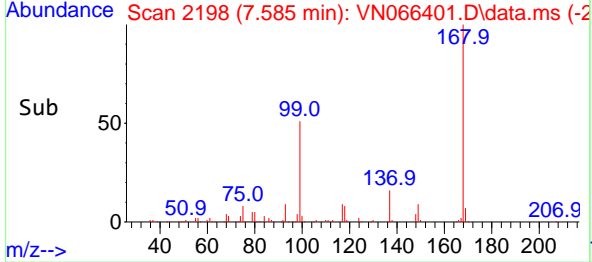
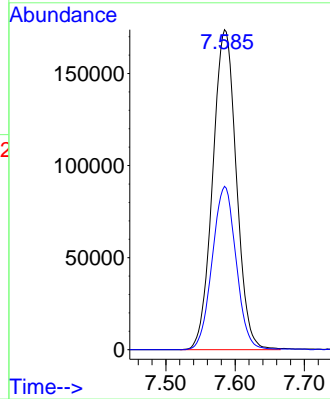


#1
 Pentafluorobenzene
 Concen: 50.00 ug/l
 RT: 7.585 min Scan# 2198
 Delta R.T. -0.000 min
 Lab File: VN066401.D
 Acq: 30 Mar 2021 1:34

Instrument :
 MSVOA_N
 ClientSampleId :
 PB135367ZHE#08

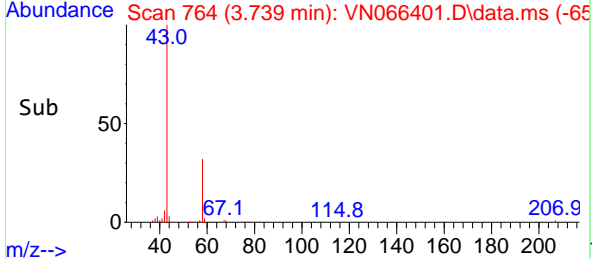
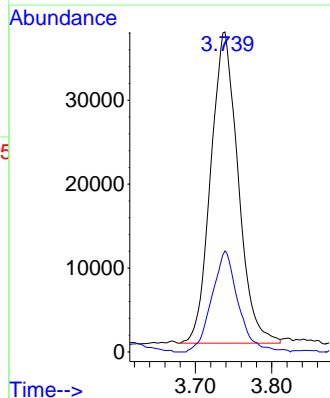
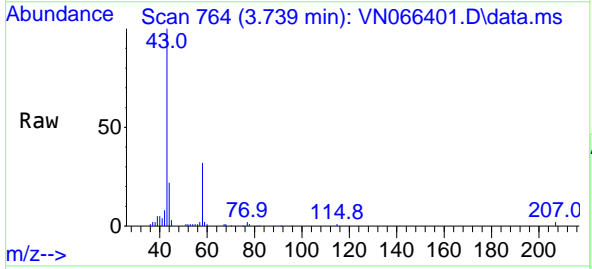


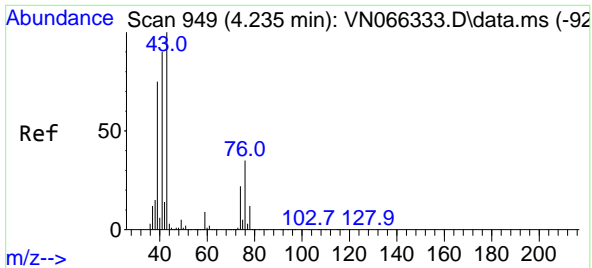
Tgt Ion:168 Resp: 412720
 Ion Ratio Lower Upper
 168 100
 99 51.0 41.1 61.7



#16
 Acetone
 Concen: 31.23 ug/l
 RT: 3.739 min Scan# 764
 Delta R.T. 0.003 min
 Lab File: VN066401.D
 Acq: 30 Mar 2021 1:34

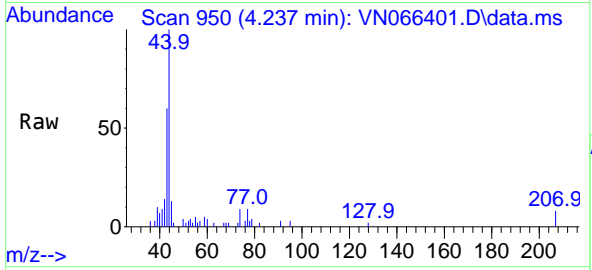
Tgt Ion: 43 Resp: 92564
 Ion Ratio Lower Upper
 43 100
 58 32.4 23.8 35.8



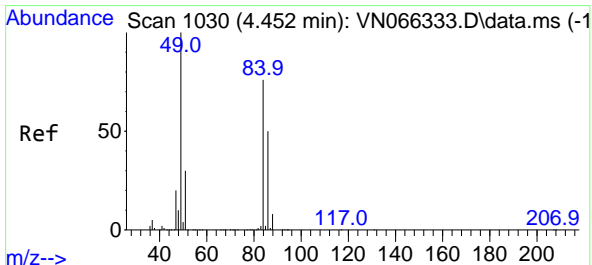
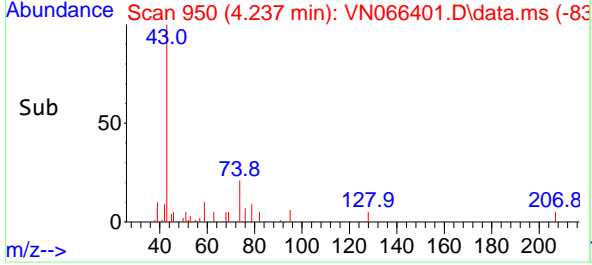
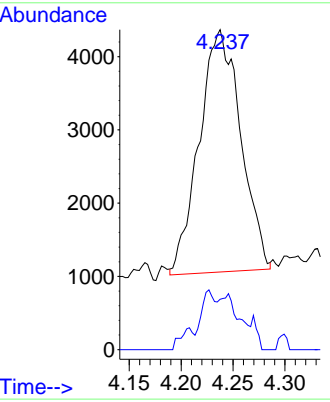


#18
Methyl Acetate
Concen: 1.19 ug/l
RT: 4.237 min Scan# 950
Delta R.T. 0.003 min
Lab File: VN066401.D
Acq: 30 Mar 2021 1:34

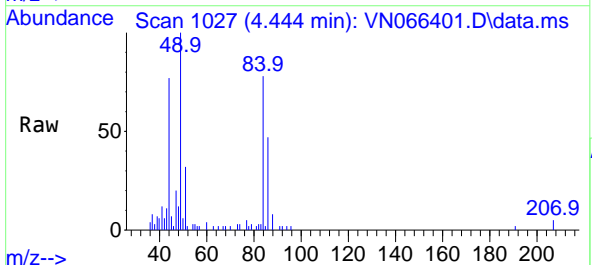
Instrument : MSVOA_N
ClientSampleId : PB135367ZHE#08



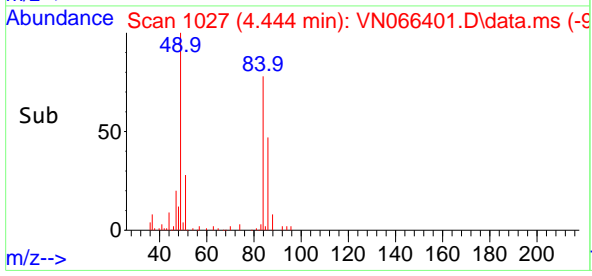
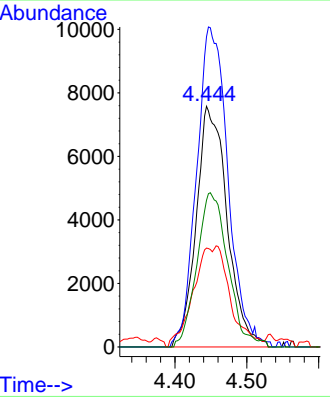
Tgt Ion: 43 Resp: 9212
Ion Ratio Lower Upper
43 100
74 6.0 17.6 26.4#

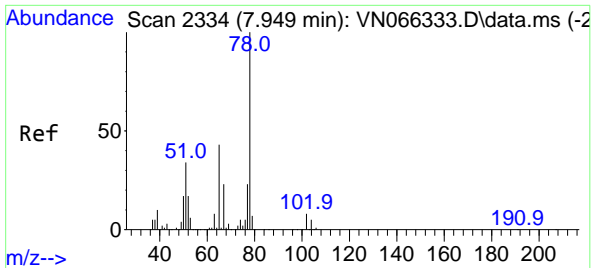


#20
Methylene Chloride
Concen: 3.08 ug/l
RT: 4.444 min Scan# 1027
Delta R.T. -0.008 min
Lab File: VN066401.D
Acq: 30 Mar 2021 1:34



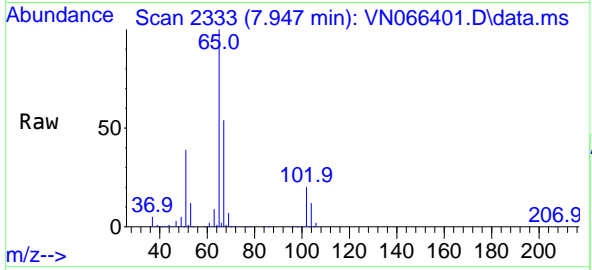
Tgt Ion: 84 Resp: 22652
Ion Ratio Lower Upper
84 100
49 128.9 105.0 157.6
51 38.4 31.6 47.4
86 61.0 53.0 79.6



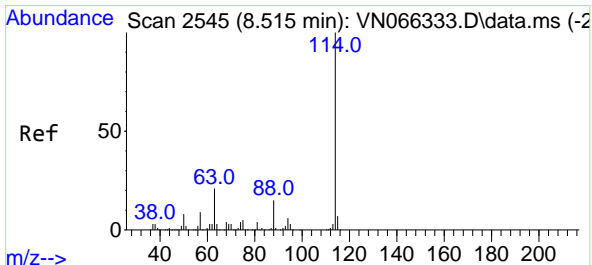
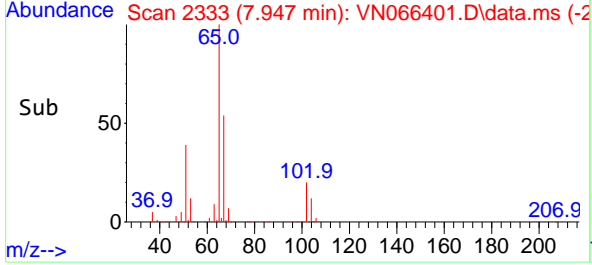
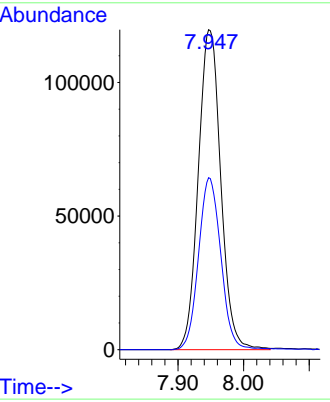


#33
 1,2-Dichloroethane-d4
 Concen: 51.95 ug/l
 RT: 7.947 min Scan# 2333
 Delta R.T. -0.002 min
 Lab File: VN066401.D
 Acq: 30 Mar 2021 1:34

Instrument :
 MSVOA_N
ClientSampleId :
 PB135367ZHE#08

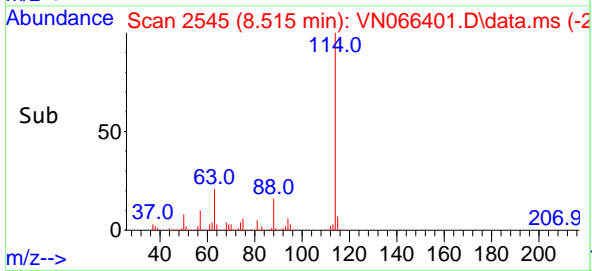
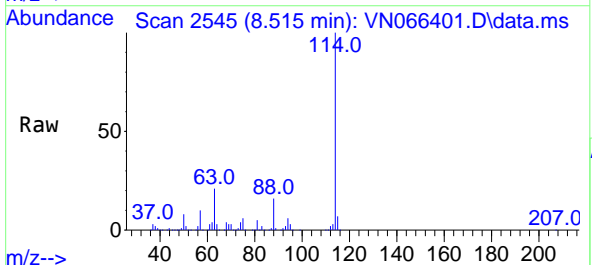
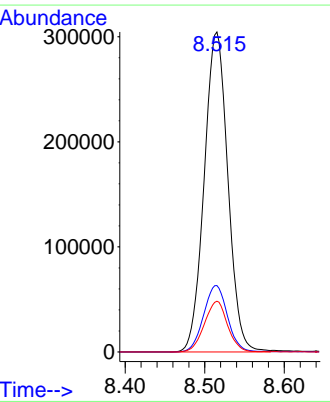


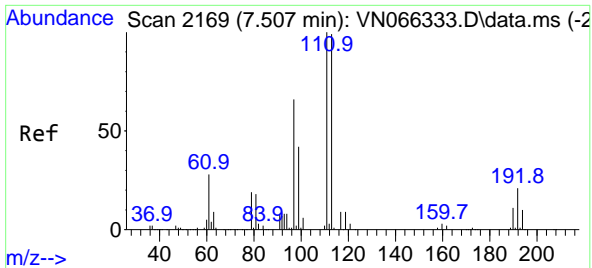
Tgt Ion: 65 Resp: 285041
 Ion Ratio Lower Upper
 65 100
 67 53.0 0.0 105.2



#34
 1,4-Difluorobenzene
 Concen: 50.00 ug/l
 RT: 8.515 min Scan# 2545
 Delta R.T. 0.000 min
 Lab File: VN066401.D
 Acq: 30 Mar 2021 1:34

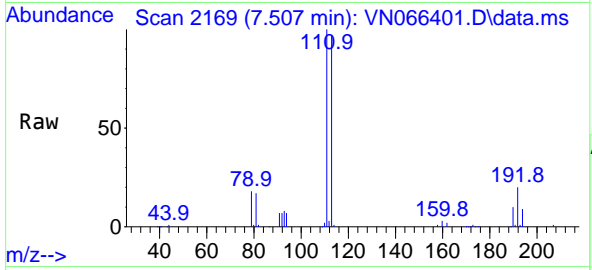
Tgt Ion:114 Resp: 629655
 Ion Ratio Lower Upper
 114 100
 63 20.8 0.0 42.0
 88 15.8 0.0 31.0



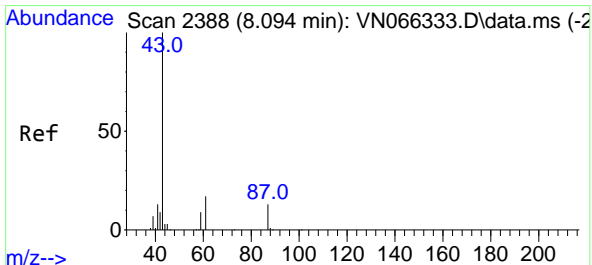
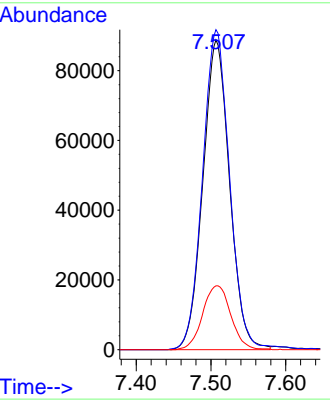
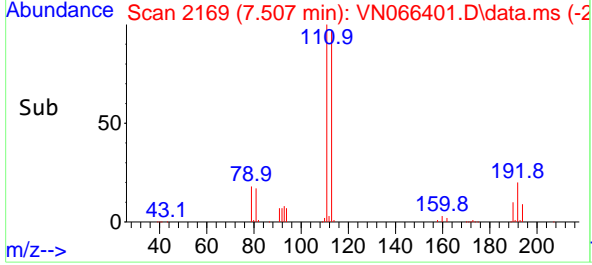


#35
 Dibromofluoromethane
 Concen: 52.80 ug/l
 RT: 7.507 min Scan# 2169
 Delta R.T. -0.000 min
 Lab File: VN066401.D
 Acq: 30 Mar 2021 1:34

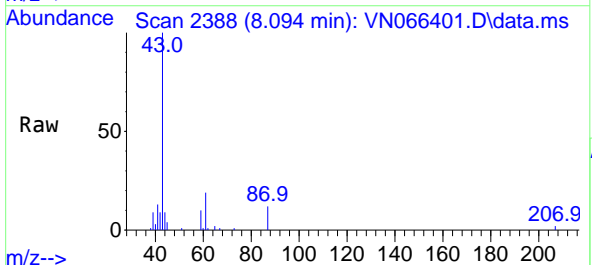
Instrument : MSVOA_N
 ClientSampleId : PB135367ZHE#08



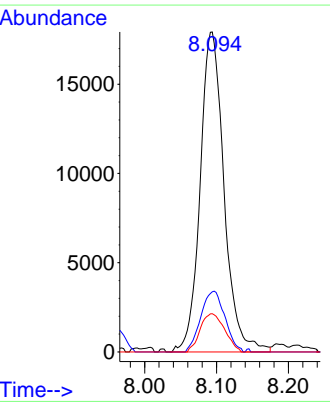
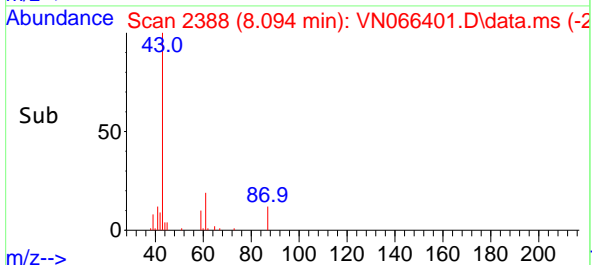
Tgt Ion:113 Resp: 220392
 Ion Ratio Lower Upper
 113 100
 111 105.0 81.8 122.8
 192 21.8 17.1 25.7

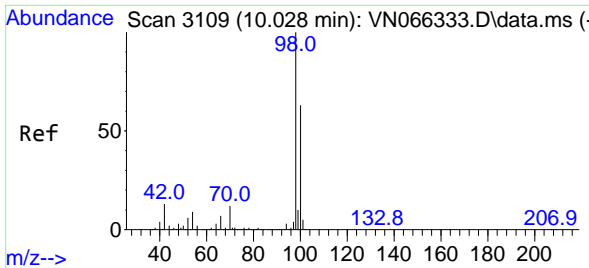


#43
 Isopropyl Acetate
 Concen: 3.72 ug/l
 RT: 8.094 min Scan# 2388
 Delta R.T. 0.000 min
 Lab File: VN066401.D
 Acq: 30 Mar 2021 1:34



Tgt Ion: 43 Resp: 41433
 Ion Ratio Lower Upper
 43 100
 61 19.2 15.5 23.3
 87 12.2 10.5 15.7

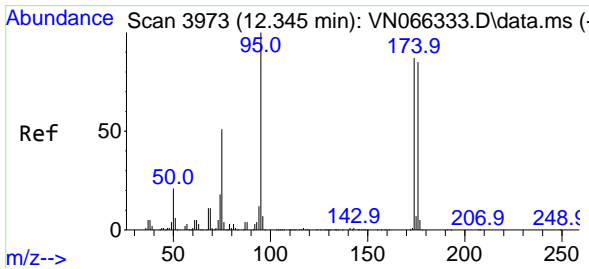
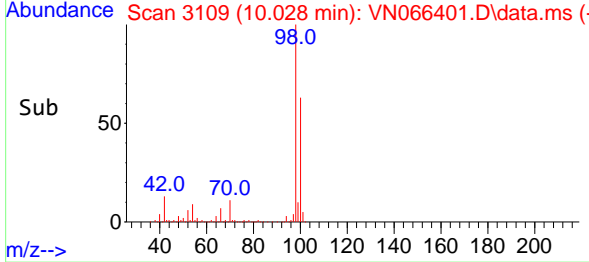
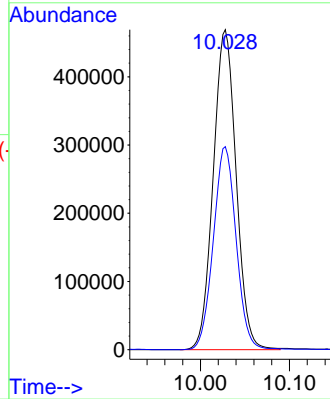
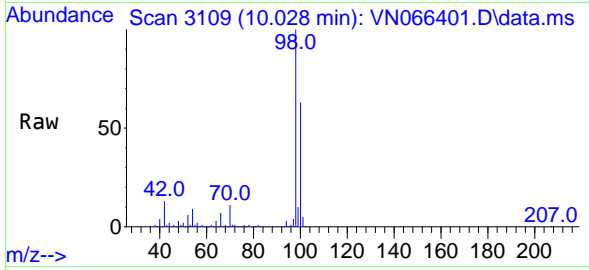




#50
 Toluene-d8
 Concen: 52.95 ug/l
 RT: 10.028 min Scan# 3109
 Delta R.T. -0.000 min
 Lab File: VN066401.D
 Acq: 30 Mar 2021 1:34

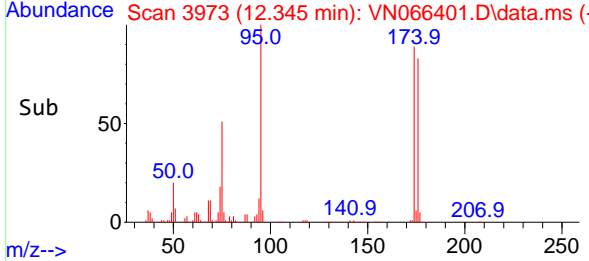
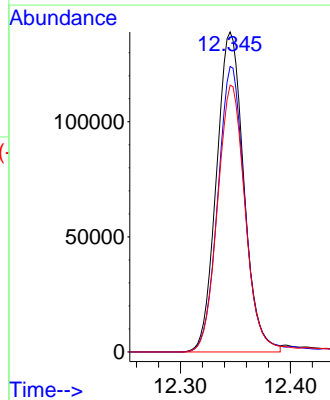
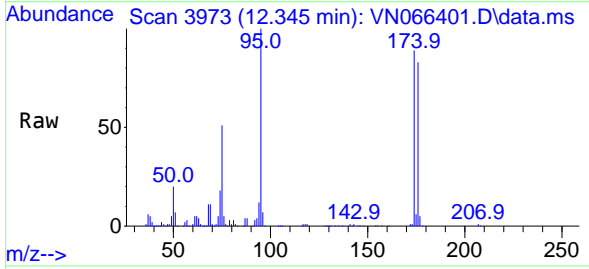
Instrument :
 MSVOA_N
 ClientSampleId :
 PB135367ZHE#08

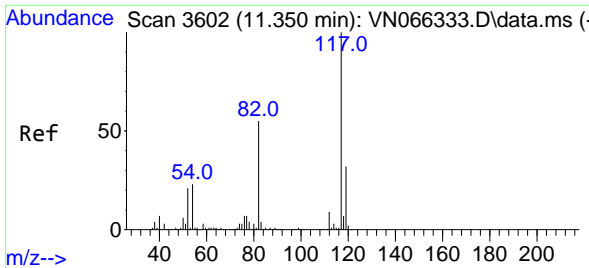
Tgt Ion: 98 Resp: 838288
 Ion Ratio Lower Upper
 98 100
 100 63.5 50.5 75.7



#62
 4-Bromofluorobenzene
 Concen: 43.76 ug/l
 RT: 12.345 min Scan# 3973
 Delta R.T. 0.000 min
 Lab File: VN066401.D
 Acq: 30 Mar 2021 1:34

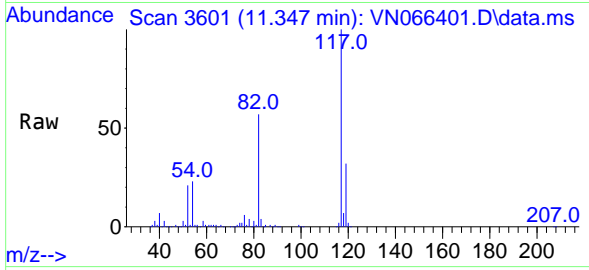
Tgt Ion: 95 Resp: 240655
 Ion Ratio Lower Upper
 95 100
 174 87.9 0.0 172.2
 176 84.5 0.0 167.8





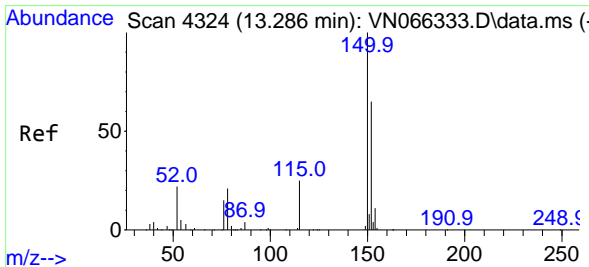
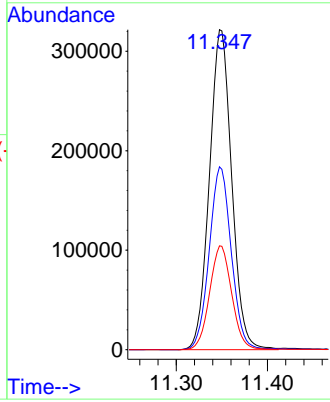
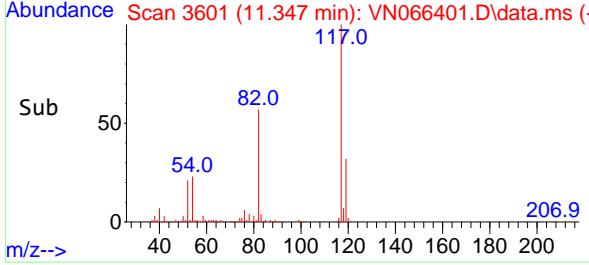
#63
 Chlorobenzene-d5
 Concen: 50.00 ug/l
 RT: 11.347 min Scan# 3601
 Delta R.T. -0.003 min
 Lab File: VN066401.D
 Acq: 30 Mar 2021 1:34

Instrument :
 MSVOA_N
ClientSampleId :
 PB135367ZHE#08

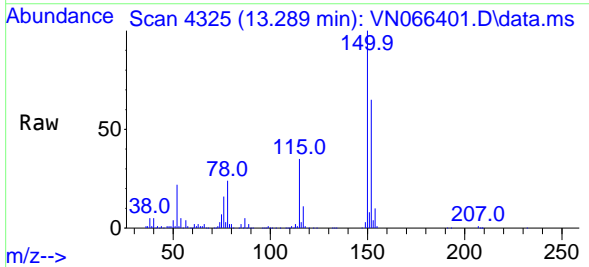


Tgt Ion:117 Resp: 546102

Ion	Ratio	Lower	Upper
117	100		
82	57.1	44.2	66.4
119	32.4	25.8	38.6



#72
 1,4-Dichlorobenzene-d4
 Concen: 50.00 ug/l
 RT: 13.289 min Scan# 4325
 Delta R.T. 0.003 min
 Lab File: VN066401.D
 Acq: 30 Mar 2021 1:34



Tgt Ion:152 Resp: 214083

Ion	Ratio	Lower	Upper
152	100		
115	56.0	27.8	83.4
150	158.4	0.0	348.4

