

Data Path : Z:\voasrv\HPCHEM1\MSVOA\_N\Data\VN033121\  
 Data File : VN066442.D  
 Acq On : 31 Mar 2021 14:34  
 Operator : JC/MD  
 Sample : M1835-01DL 10X  
 Misc : 5.00mL/MSVOA\_N/WATER  
 ALS Vial : 9 Sample Multiplier: 1

Instrument :  
 MSVOA\_N  
 ClientSampleID :  
 LMW01DL

Quant Time: Apr 01 01:37:31 2021  
 Quant Method : Z:\voasrv\HPCHEM1\MSVOA\_N\methods\82N032521W.M  
 Quant Title : SW846 8260  
 QLast Update : Fri Mar 26 16:26:01 2021  
 Response via : Initial Calibration

Compound	R.T.	QIon	Response	Conc	Units	Dev(Min)
Internal Standards						
1) Pentafluorobenzene	7.584	168	407677	50.00	ug/l	0.00
34) 1,4-Difluorobenzene	8.515	114	626165	50.00	ug/l	0.00
63) Chlorobenzene-d5	11.347	117	551512	50.00	ug/l	0.00
72) 1,4-Dichlorobenzene-d4	13.286	152	250783	50.00	ug/l	0.00
System Monitoring Compounds						
33) 1,2-Dichloroethane-d4	7.947	65	290171	53.54	ug/l	0.00
Spiked Amount	50.000	Range 78 - 117	Recovery	=	107.08%	
35) Dibromofluoromethane	7.507	113	222100	53.50	ug/l	0.00
Spiked Amount	50.000	Range 75 - 124	Recovery	=	107.00%	
50) Toluene-d8	10.028	98	846673	53.77	ug/l	0.00
Spiked Amount	50.000	Range 92 - 112	Recovery	=	107.54%	
62) 4-Bromofluorobenzene	12.345	95	276721	50.60	ug/l	0.00
Spiked Amount	50.000	Range 83 - 123	Recovery	=	101.20%	
Target Compounds						
3) Chloromethane	2.014	50	2451	Below Cal		90
11) Tert butyl alcohol	4.704	59	470253	568.97	ug/l #	84
13) Acrolein	3.492	56	6295	Below Cal	#	1
16) Acetone	3.741	43	13291	4.54	ug/l #	84
17) Carbon Disulfide	3.969	76	2948	0.21	ug/l #	83
18) Methyl Acetate	4.436	43	31438	4.11	ug/l #	54
19) Methyl tert-butyl Ether	4.945	73	9195	0.66	ug/l #	1
20) Methylene Chloride	4.447	84	996	Below Cal	#	70
31) Cyclohexane	7.574	56	35005	4.67	ug/l #	81
36) 1,1-Dichloropropene	7.584	75	29815	5.07	ug/l #	48
38) Carbon Tetrachloride	7.587	117	37513	6.34	ug/l #	16
39) Methylcyclohexane	9.011	83	9074	1.27	ug/l	92
40) Benzene	7.963	78	828537	46.64	ug/l	98
42) 1,2-Dichloroethane	7.963	62	7114	1.12	ug/l	87
43) Isopropyl Acetate	8.067	43	6498	0.59	ug/l #	61
49) 1,4-Dioxane	9.140	88	24	0.36	ug/l #	23
52) Toluene	10.092	92	434599	39.85	ug/l	98
53) t-1,3-Dichloropropene	10.092	75	5062	0.73	ug/l #	1
58) 2-Chloroethyl Vinyl ether	9.545	63	245	25.90	ug/l #	49
67) Ethyl Benzene	11.452	91	848246	42.50	ug/l	100
68) m/p-Xylenes	11.562	106	869768	114.69	ug/l	99
69) o-Xylene	11.889	106	283732	38.78	ug/l	99
70) Styrene	11.892	104	15027	1.27	ug/l #	1
71) Bromoform	12.345	173	2361	0.67	ug/l #	1
73) Isopropylbenzene	12.192	105	39945	2.14	ug/l	98
74) N-amyl acetate	11.991	43	135	3.21	ug/l #	55
76) 1,2,3-Trichloropropane	12.345	75	138977	25.26	ug/l #	100
78) n-propylbenzene	12.535	91	79023	3.90	ug/l	97
79) 2-Chlorotoluene	12.632	91	18008	1.44	ug/l #	40
80) 1,3,5-Trimethylbenzene	12.678	105	114600	7.51	ug/l	96
81) trans-1,4-Dichloro-2-b...	12.345	75	138977	75.95	ug/l #	12
82) 4-Chlorotoluene	12.678	91	10979	0.88	ug/l #	41
83) tert-Butylbenzene	12.983	119	86677	6.60	ug/l #	67
84) 1,2,4-Trimethylbenzene	12.983	105	728785	49.16	ug/l	99
85) sec-Butylbenzene	12.983	105	728785	42.82	ug/l #	57
86) p-Isopropyltoluene	13.174	119	4295	0.28	ug/l #	77

Data Path : Z:\voasrv\HPCHEM1\MSVOA\_N\Data\VN033121\  
Data File : VN066442.D  
Acq On : 31 Mar 2021 14:34  
Operator : JC/MD  
Sample : M1835-01DL 10X  
Misc : 5.00mL/MSVOA\_N/WATER  
ALS Vial : 9 Sample Multiplier: 1

Instrument :  
MSVOA\_N  
ClientSampleId :  
LMW01DL

Quant Time: Apr 01 01:37:31 2021  
Quant Method : Z:\voasrv\HPCHEM1\MSVOA\_N\methods\82N032521W.M  
Quant Title : SW846 8260  
QLast Update : Fri Mar 26 16:26:01 2021  
Response via : Initial Calibration

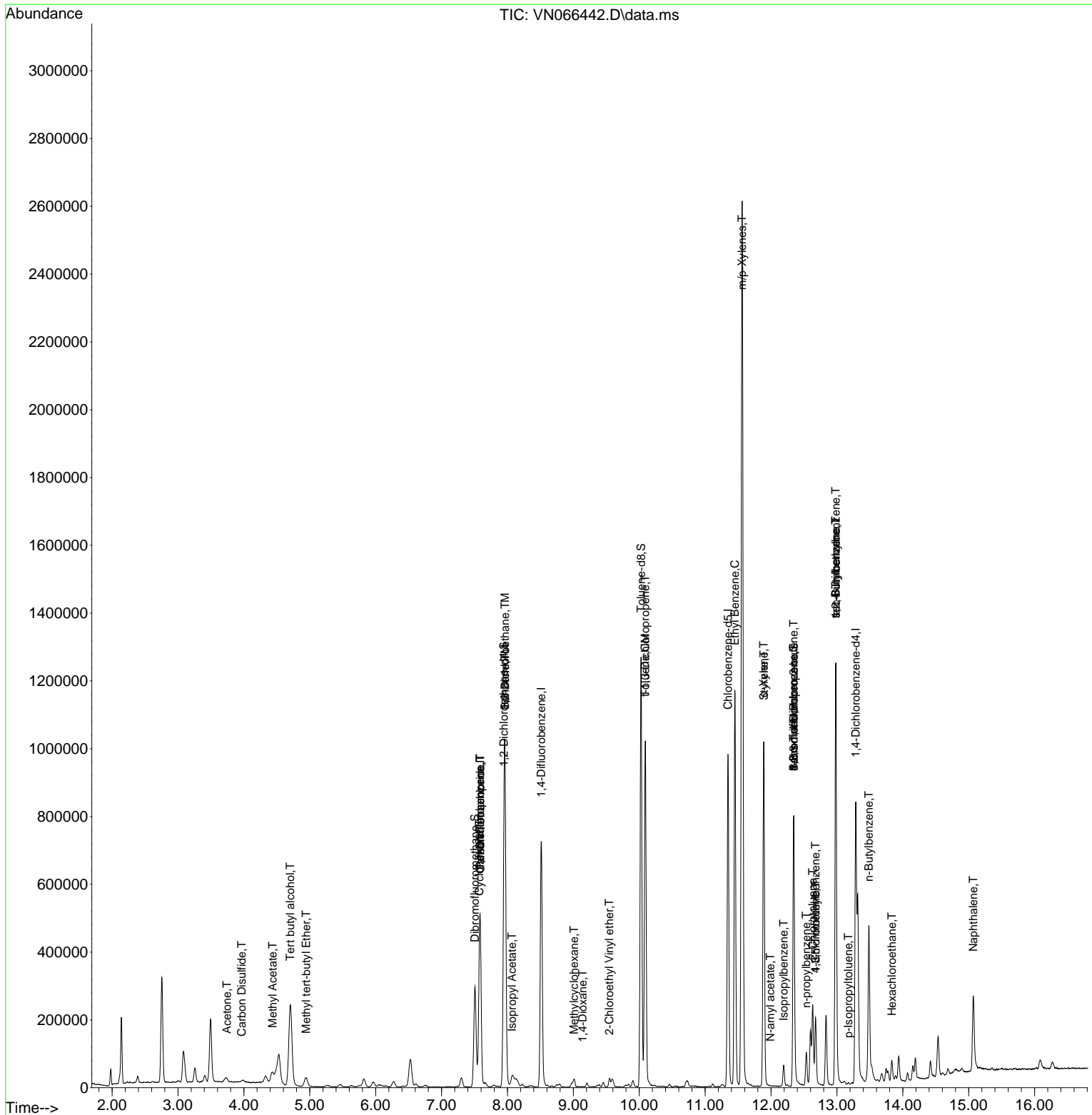
Compound	R.T.	QIon	Response	Conc	Units	Dev(Min)
89) n-Butylbenzene	13.485	91	41283	3.28	ug/l #	44
90) Hexachloroethane	13.833	117	3244	1.18	ug/l #	5
95) Naphthalene	15.070	128	221789	16.49	ug/l	100

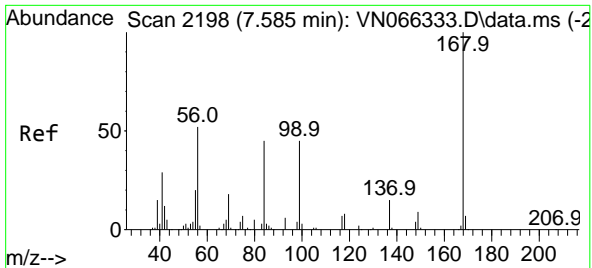
(#) = qualifier out of range (m) = manual integration (+) = signals summed

Data Path : Z:\voasrv\HPCHEM1\MSVOA\_N\Data\VN033121\  
 Data File : VN066442.D  
 Acq On : 31 Mar 2021 14:34  
 Operator : JC/MD  
 Sample : M1835-01DL 10X  
 Misc : 5.00mL/MSVOA\_N/WATER  
 ALS Vial : 9 Sample Multiplier: 1

Instrument :  
 MSVOA\_N  
 Client Sampled :  
 LMW01DL

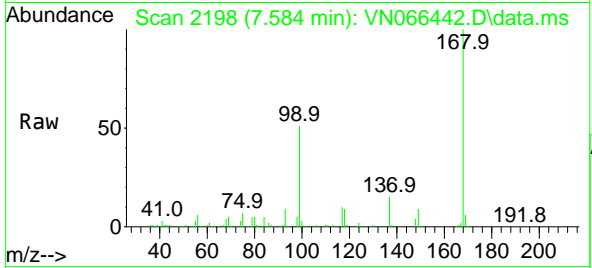
Quant Time: Apr 01 01:37:31 2021  
 Quant Method : Z:\voasrv\HPCHEM1\MSVOA\_N\methods\82N032521W.M  
 Quant Title : SW846 8260  
 QLast Update : Fri Mar 26 16:26:01 2021  
 Response via : Initial Calibration



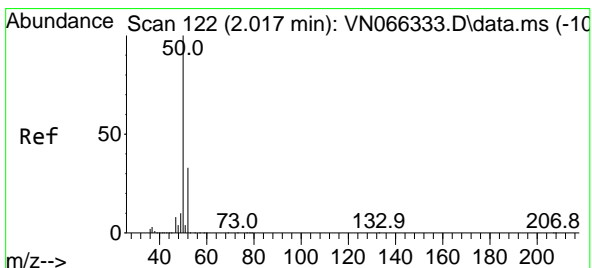
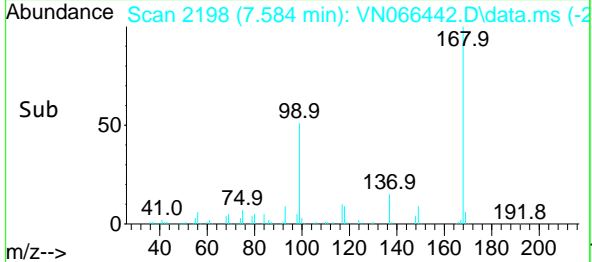
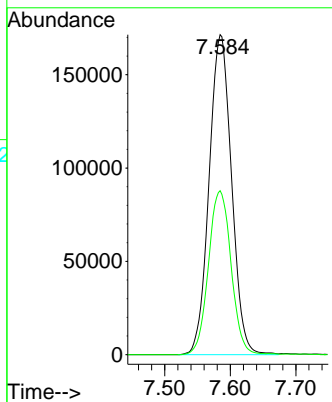


#1  
 Pentafluorobenzene  
 Concen: 50.00 ug/l  
 RT: 7.584 min Scan# 2198  
 Delta R.T. -0.001 min  
 Lab File: VN066442.D  
 Acq: 31 Mar 2021 14:34

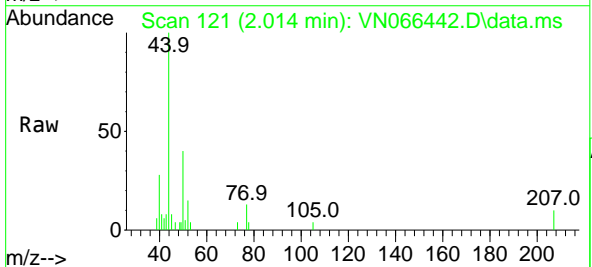
Instrument :  
 MSVOA\_N  
 ClientSampled :  
 LMW01DL



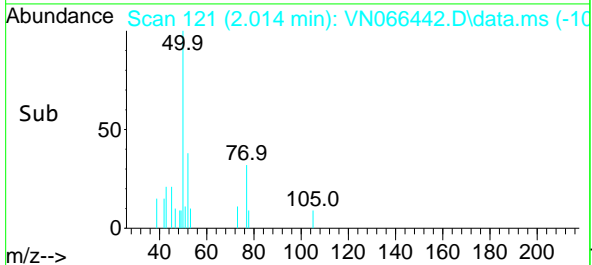
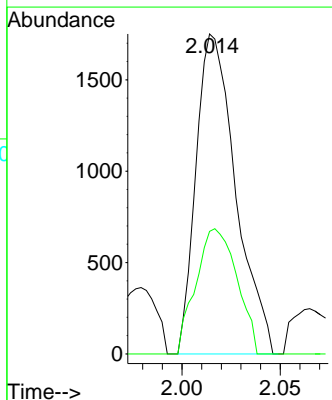
Tgt Ion:168 Resp: 407677  
 Ion Ratio Lower Upper  
 168 100  
 99 51.2 41.1 61.7

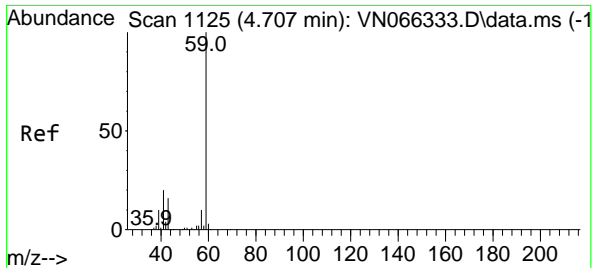


#3  
 Chloromethane  
 Concen: Below Cal  
 RT: 2.014 min Scan# 121  
 Delta R.T. -0.003 min  
 Lab File: VN066442.D  
 Acq: 31 Mar 2021 14:34



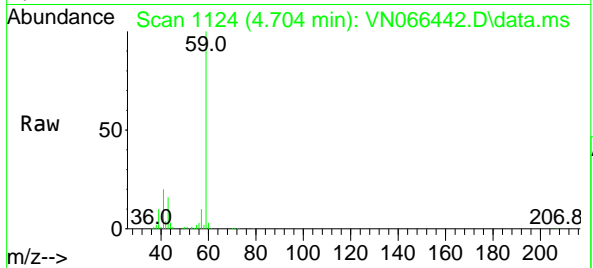
Tgt Ion: 50 Resp: 2451  
 Ion Ratio Lower Upper  
 50 100  
 52 38.3 26.2 39.2



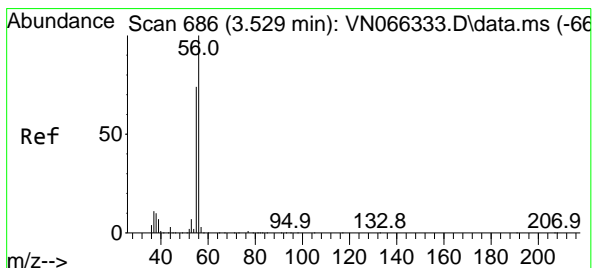
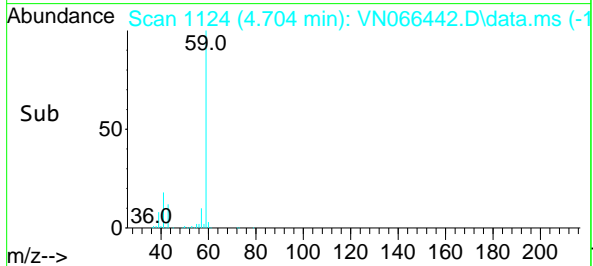
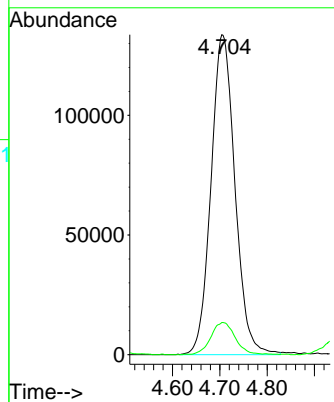


#11  
 Tert butyl alcohol  
 Concen: 568.97 ug/l  
 RT: 4.704 min Scan# 1124  
 Delta R.T. -0.003 min  
 Lab File: VN066442.D  
 Acq: 31 Mar 2021 14:34

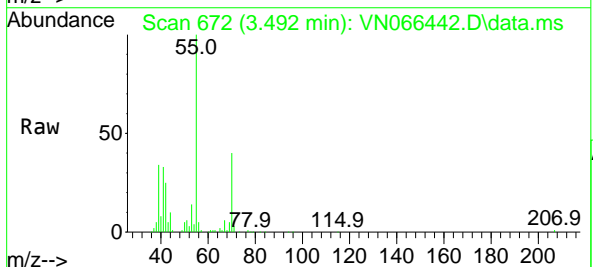
Instrument :  
 MSVOA\_N  
 ClientSampled :  
 LMW01DL



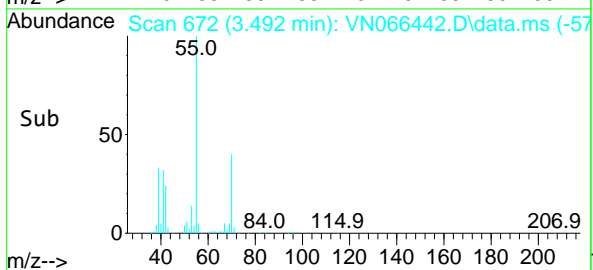
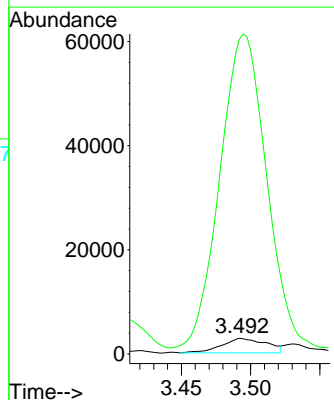
Tgt Ion: 59 Resp: 470253  
 Ion Ratio Lower Upper  
 59 100  
 57 10.3 4.1 6.1#

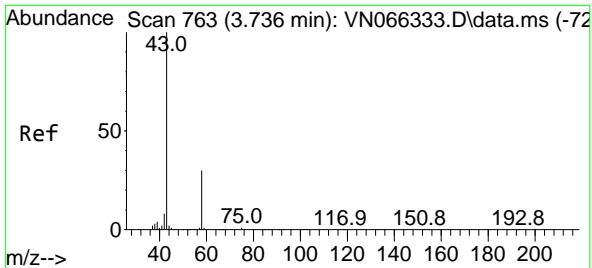


#13  
 Acrolein  
 Concen: Below Cal  
 RT: 3.492 min Scan# 672  
 Delta R.T. -0.037 min  
 Lab File: VN066442.D  
 Acq: 31 Mar 2021 14:34



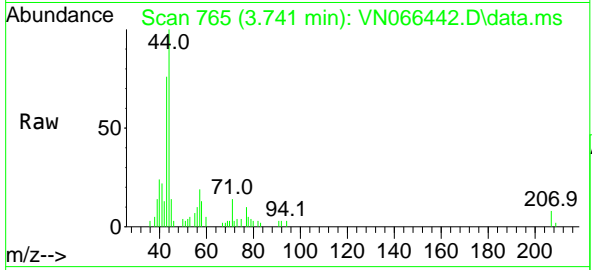
Tgt Ion: 56 Resp: 6295  
 Ion Ratio Lower Upper  
 56 100  
 55 2313.2 57.9 86.9#



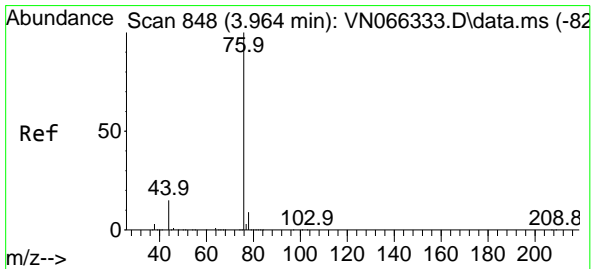
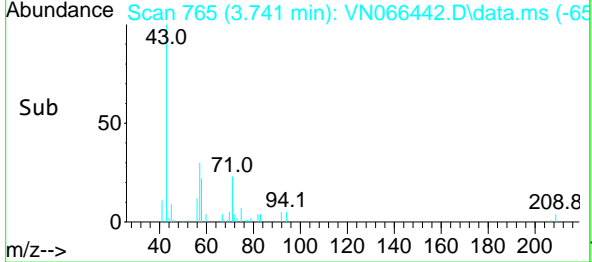
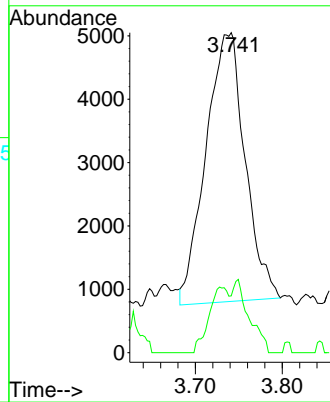


#16  
 Acetone  
 Concen: 4.54 ug/l  
 RT: 3.741 min Scan# 765  
 Delta R.T. 0.005 min  
 Lab File: VN066442.D  
 Acq: 31 Mar 2021 14:34

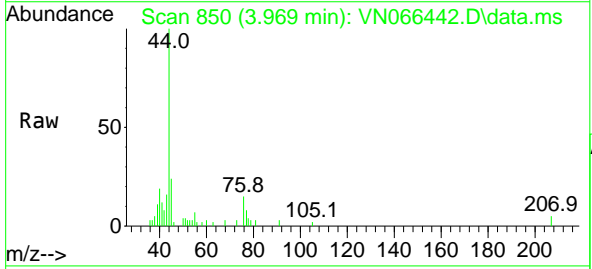
Instrument :  
 MSVOA\_N  
 ClientSampled :  
 LMW01DL



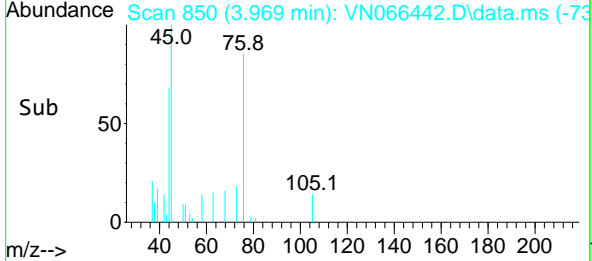
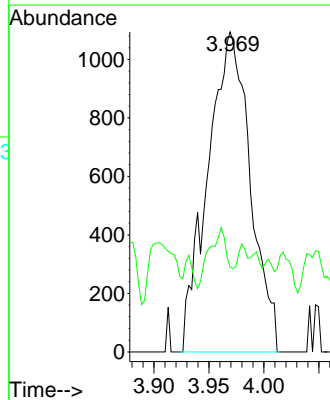
Tgt Ion: 43 Resp: 13291  
 Ion Ratio Lower Upper  
 43 100  
 58 21.4 23.8 35.8#

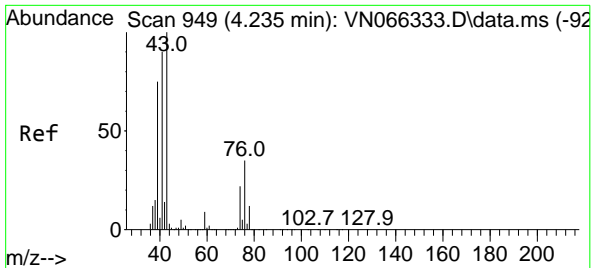


#17  
 Carbon Disulfide  
 Concen: 0.21 ug/l  
 RT: 3.969 min Scan# 850  
 Delta R.T. 0.005 min  
 Lab File: VN066442.D  
 Acq: 31 Mar 2021 14:34



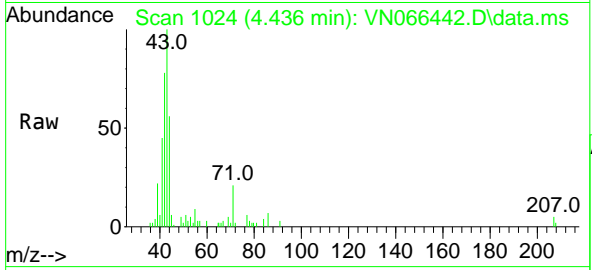
Tgt Ion: 76 Resp: 2948  
 Ion Ratio Lower Upper  
 76 100  
 78 3.0 7.4 11.0#



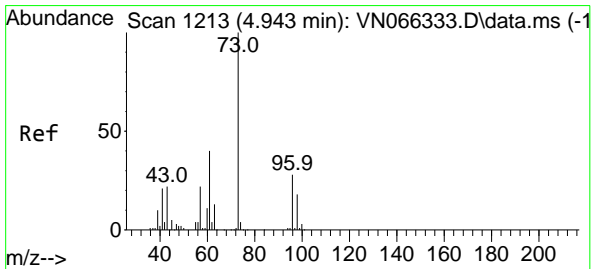
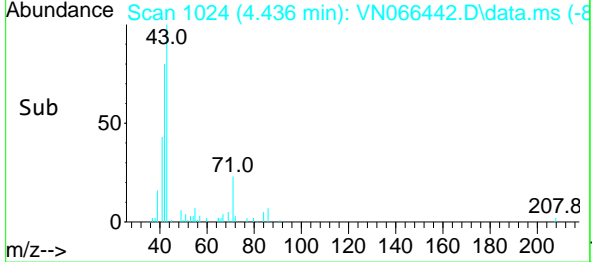
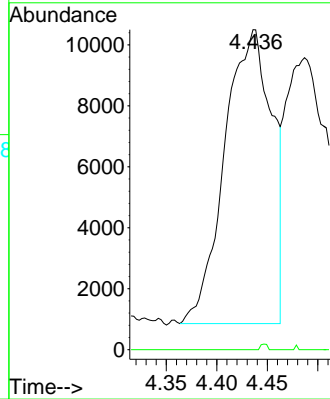


#18  
 Methyl Acetate  
 Concen: 4.11 ug/l  
 RT: 4.436 min Scan# 1024  
 Delta R.T. 0.201 min  
 Lab File: VN066442.D  
 Acq: 31 Mar 2021 14:34

Instrument :  
 MSVOA\_N  
 ClientSampled :  
 LMW01DL

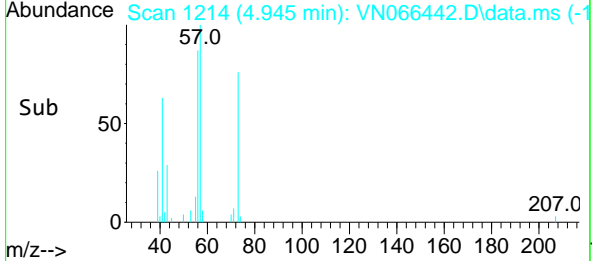
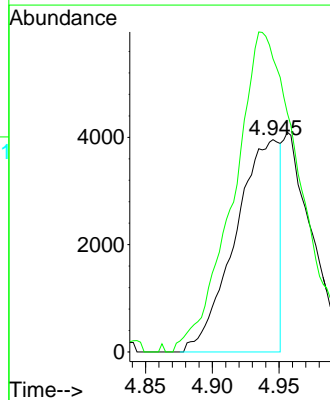
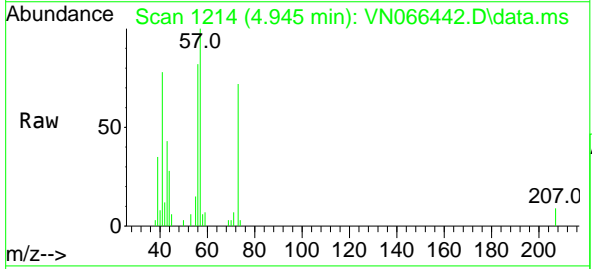


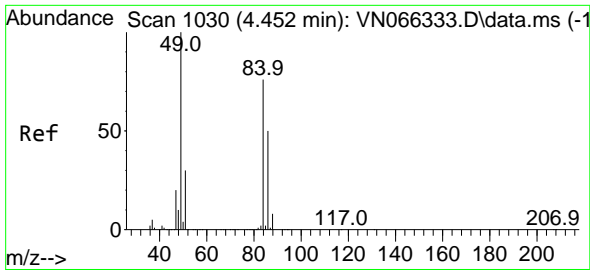
Tgt Ion: 43 Resp: 31438  
 Ion Ratio Lower Upper  
 43 100  
 74 0.3 17.6 26.4#



#19  
 Methyl tert-butyl Ether  
 Concen: 0.66 ug/l  
 RT: 4.945 min Scan# 1214  
 Delta R.T. 0.003 min  
 Lab File: VN066442.D  
 Acq: 31 Mar 2021 14:34

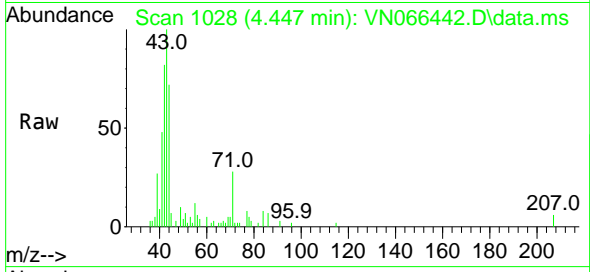
Tgt Ion: 73 Resp: 9195  
 Ion Ratio Lower Upper  
 73 100  
 57 133.0 17.6 26.4#



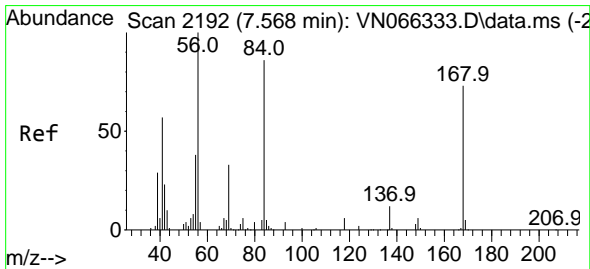
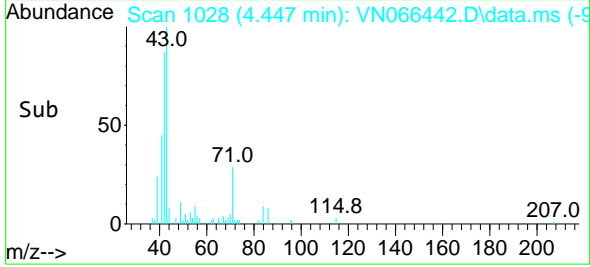
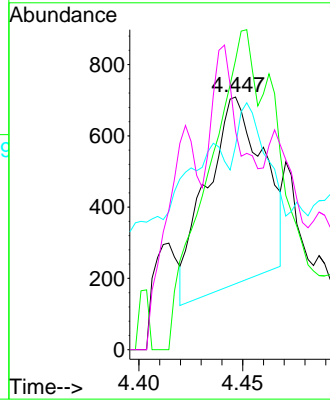


#20  
 Methylene Chloride  
 Concen: Below Cal  
 RT: 4.447 min Scan# 1028  
 Delta R.T. -0.005 min  
 Lab File: VN066442.D  
 Acq: 31 Mar 2021 14:34

Instrument :  
 MSVOA\_N  
 ClientSampled :  
 LMW01DL

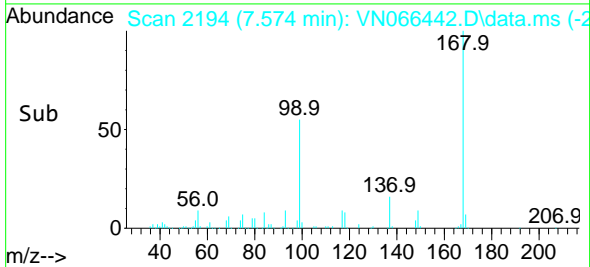
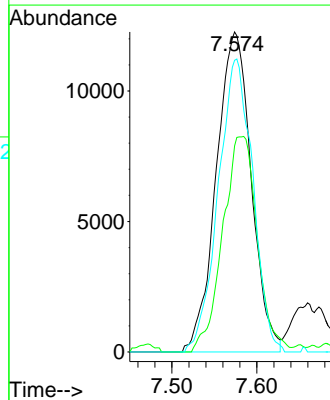
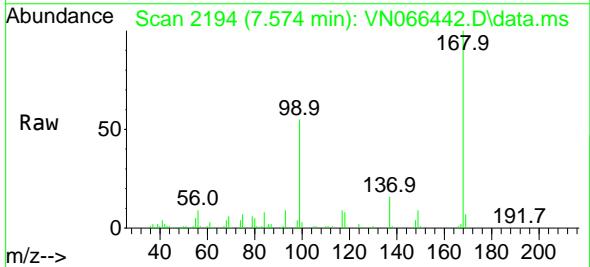


Tgt Ion: 84 Resp: 996  
 Ion Ratio Lower Upper  
 84 100  
 49 118.7 105.0 157.6  
 51 27.6 31.6 47.4#  
 86 8.0 53.0 79.6#

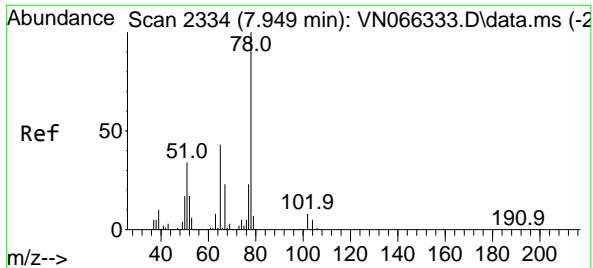


#31  
 Cyclohexane  
 Concen: 4.67 ug/l  
 RT: 7.574 min Scan# 2194  
 Delta R.T. 0.005 min  
 Lab File: VN066442.D  
 Acq: 31 Mar 2021 14:34

Tgt Ion: 56 Resp: 35005  
 Ion Ratio Lower Upper  
 56 100  
 69 64.4 26.6 40.0#  
 84 91.2 68.7 103.1

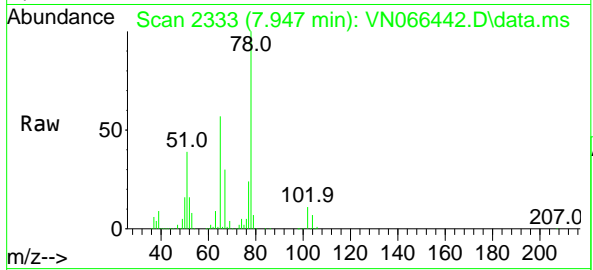




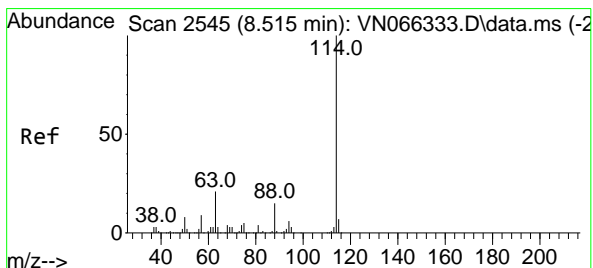
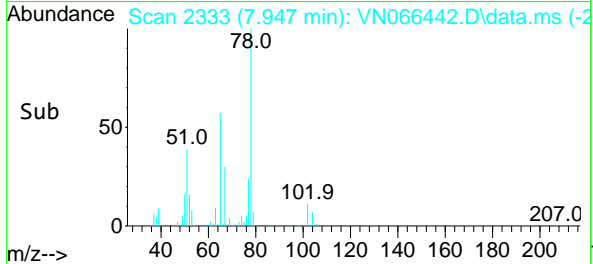
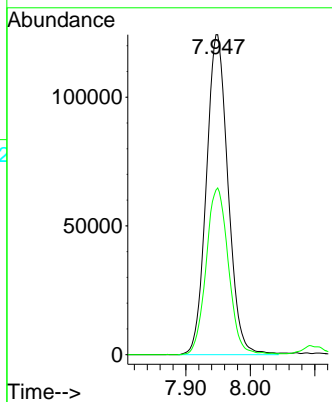


#33  
 1,2-Dichloroethane-d4  
 Concen: 53.54 ug/l  
 RT: 7.947 min Scan# 2333  
 Delta R.T. -0.002 min  
 Lab File: VN066442.D  
 Acq: 31 Mar 2021 14:34

Instrument :  
 MSVOA\_N  
 ClientSampled :  
 LMW01DL

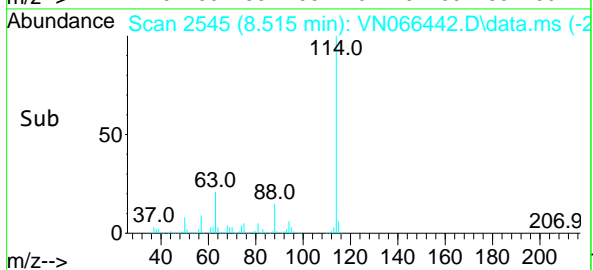
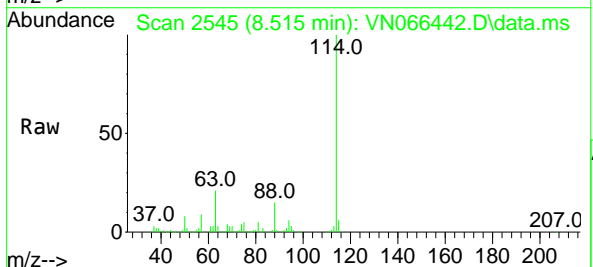
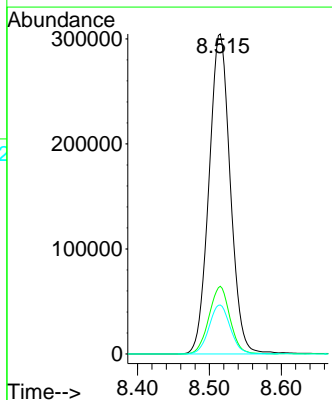


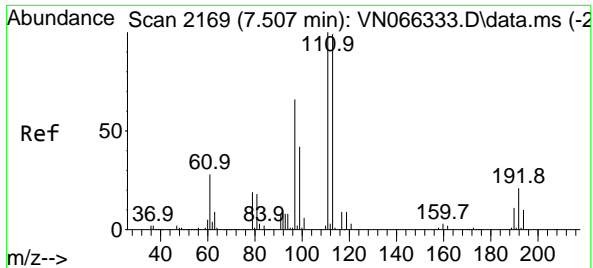
Tgt Ion: 65 Resp: 290171  
 Ion Ratio Lower Upper  
 65 100  
 67 53.4 0.0 105.2



#34  
 1,4-Difluorobenzene  
 Concen: 50.00 ug/l  
 RT: 8.515 min Scan# 2545  
 Delta R.T. 0.000 min  
 Lab File: VN066442.D  
 Acq: 31 Mar 2021 14:34

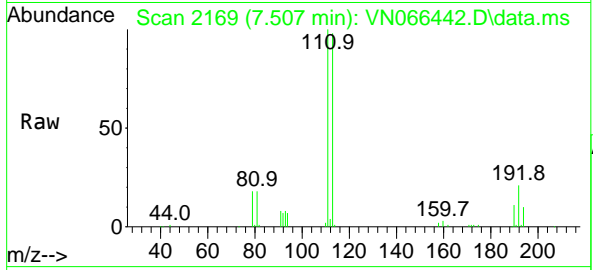
Tgt Ion:114 Resp: 626165  
 Ion Ratio Lower Upper  
 114 100  
 63 21.1 0.0 42.0  
 88 15.3 0.0 31.0





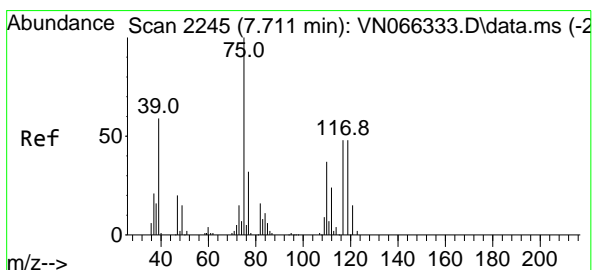
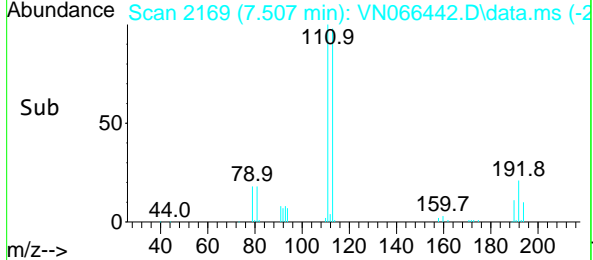
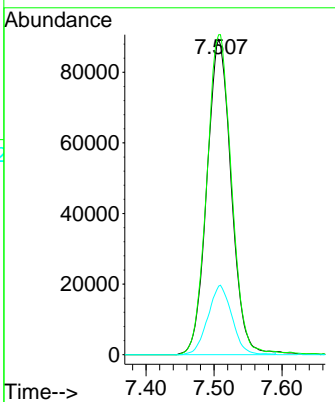
#35  
 Dibromofluoromethane  
 Concen: 53.50 ug/l  
 RT: 7.507 min Scan# 2169  
 Delta R.T. -0.000 min  
 Lab File: VN066442.D  
 Acq: 31 Mar 2021 14:34

Instrument :  
 MSVOA\_N  
 ClientSampled :  
 LMW01DL

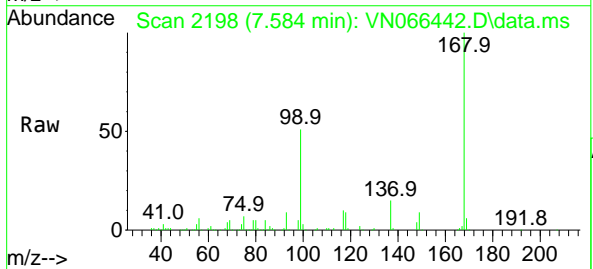


Tgt Ion:113 Resp: 222100

Ion	Ratio	Lower	Upper
113	100		
111	103.0	81.8	122.8
192	21.7	17.1	25.7

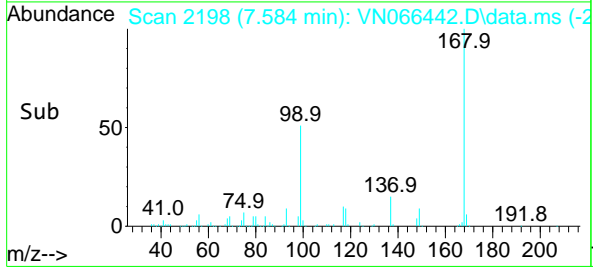
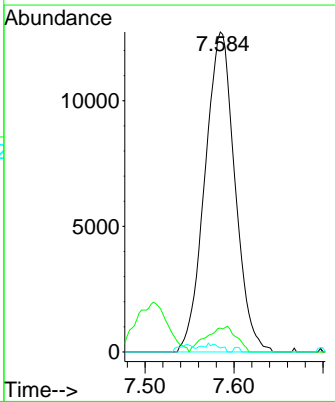


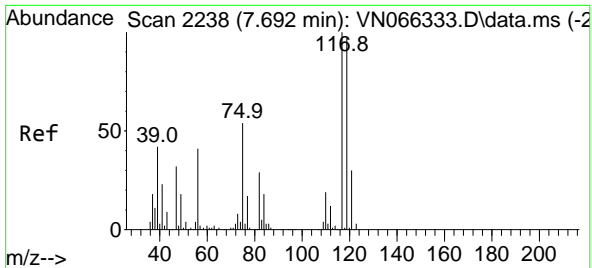
#36  
 1,1-Dichloropropene  
 Concen: 5.07 ug/l  
 RT: 7.584 min Scan# 2198  
 Delta R.T. -0.126 min  
 Lab File: VN066442.D  
 Acq: 31 Mar 2021 14:34



Tgt Ion: 75 Resp: 29815

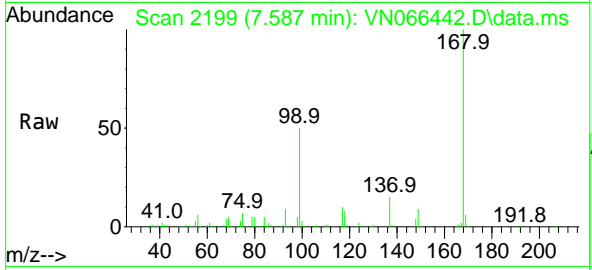
Ion	Ratio	Lower	Upper
75	100		
110	8.0	18.1	54.3#
77	0.0	25.0	37.4#





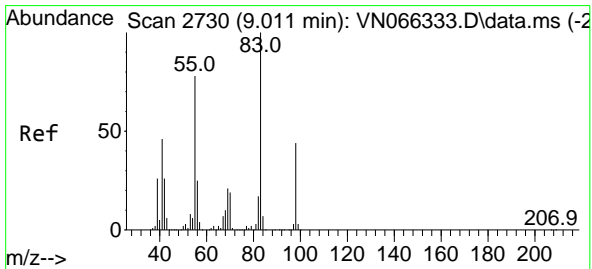
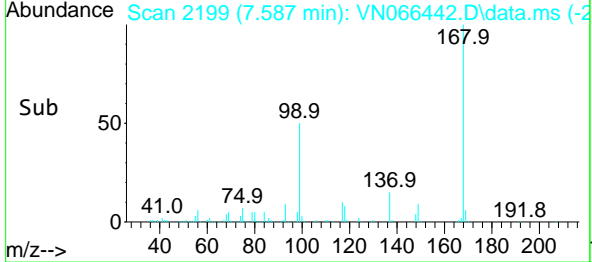
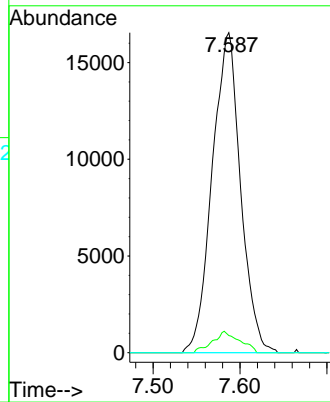
#38  
 Carbon Tetrachloride  
 Concen: 6.34 ug/l  
 RT: 7.587 min Scan# 2199  
 Delta R.T. -0.105 min  
 Lab File: VN066442.D  
 Acq: 31 Mar 2021 14:34

Instrument :  
 MSVOA\_N  
 ClientSampled :  
 LMW01DL

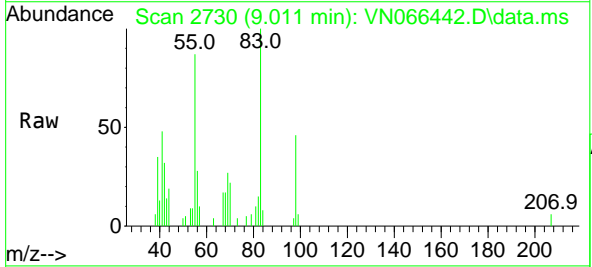


Tgt Ion: 117 Resp: 37513

Ion	Ratio	Lower	Upper
117	100		
119	5.4	77.2	115.8#
121	0.0	24.2	36.4#

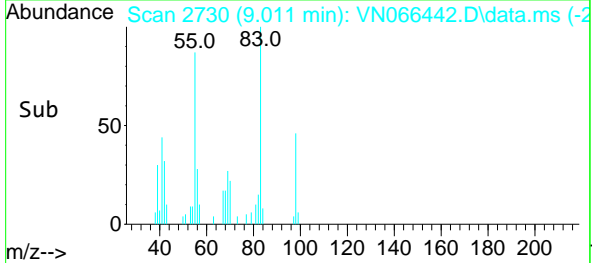
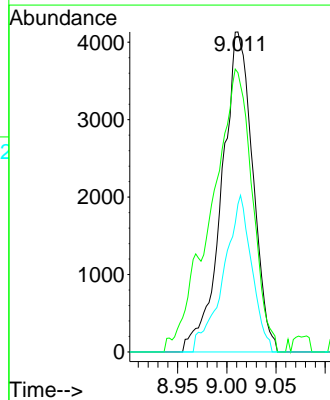


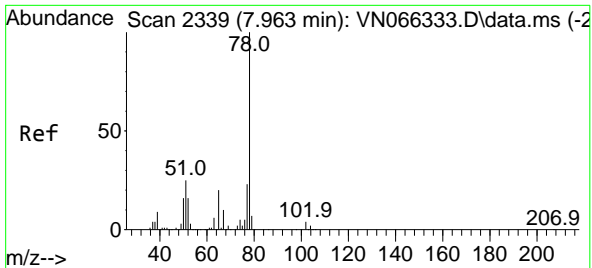
#39  
 Methylcyclohexane  
 Concen: 1.27 ug/l  
 RT: 9.011 min Scan# 2730  
 Delta R.T. -0.000 min  
 Lab File: VN066442.D  
 Acq: 31 Mar 2021 14:34



Tgt Ion: 83 Resp: 9074

Ion	Ratio	Lower	Upper
83	100		
55	87.2	62.3	93.5
98	46.2	35.6	53.4

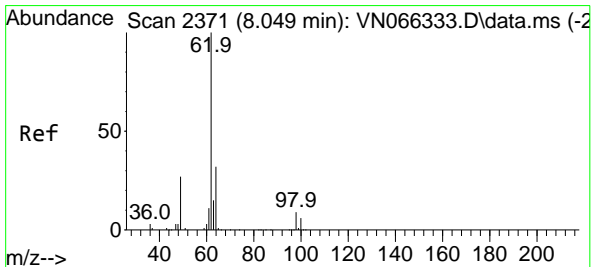
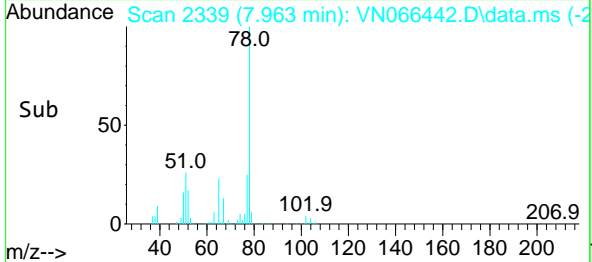
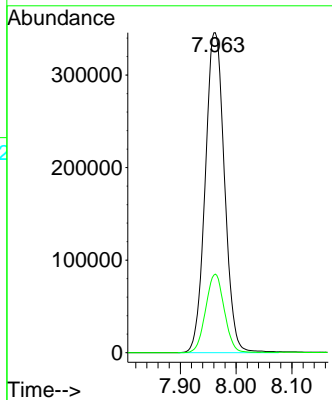
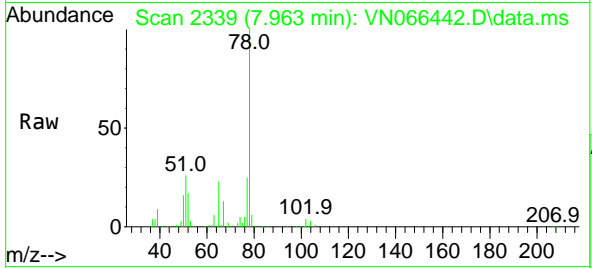




#40  
Benzene  
Concen: 46.64 ug/l  
RT: 7.963 min Scan# 2339  
Delta R.T. -0.000 min  
Lab File: VN066442.D  
Acq: 31 Mar 2021 14:34

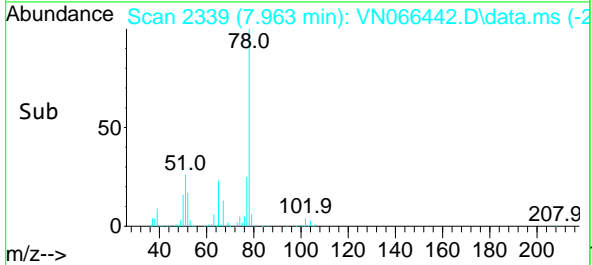
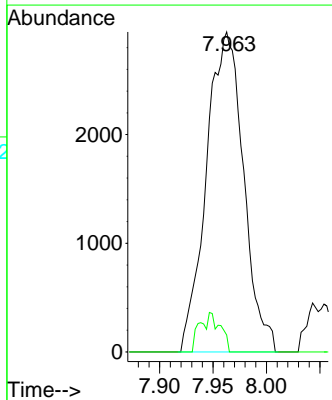
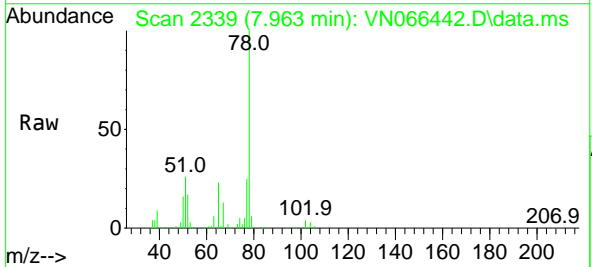
Instrument :  
MSVOA\_N  
ClientSampled :  
LMW01DL

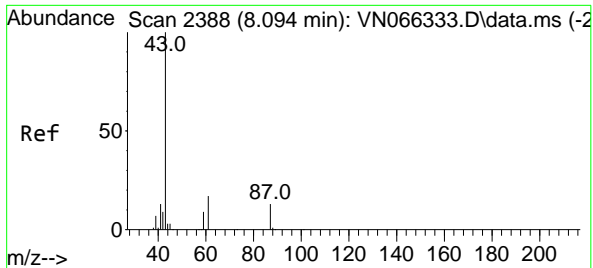
Tgt Ion: 78 Resp: 828537  
Ion Ratio Lower Upper  
78 100  
77 24.6 18.7 28.1



#42  
1,2-Dichloroethane  
Concen: 1.12 ug/l  
RT: 7.963 min Scan# 2339  
Delta R.T. -0.086 min  
Lab File: VN066442.D  
Acq: 31 Mar 2021 14:34

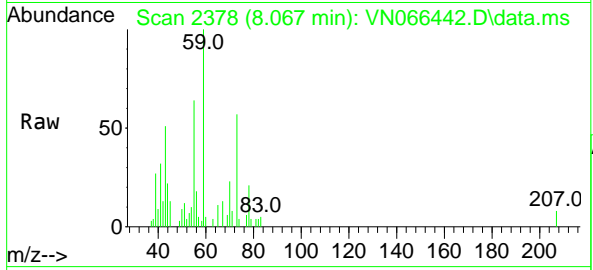
Tgt Ion: 62 Resp: 7114  
Ion Ratio Lower Upper  
62 100  
98 4.0 0.0 17.6





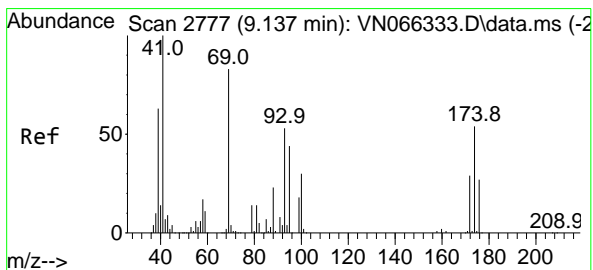
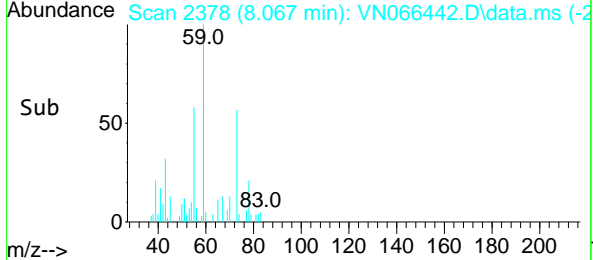
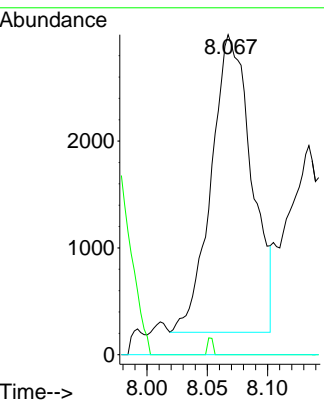
#43  
 Isopropyl Acetate  
 Concen: 0.59 ug/l  
 RT: 8.067 min Scan# 2378  
 Delta R.T. -0.027 min  
 Lab File: VN066442.D  
 Acq: 31 Mar 2021 14:34

Instrument :  
 MSVOA\_N  
 ClientSampled :  
 LMW01DL

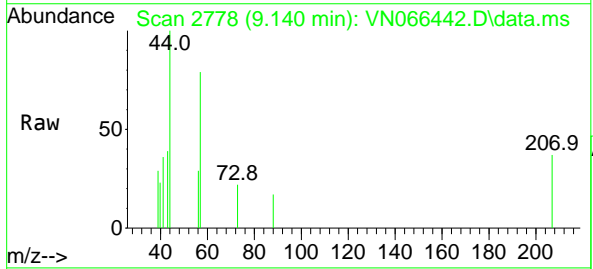


Tgt Ion: 43 Resp: 6498

Ion	Ratio	Lower	Upper
43	100		
61	0.0	15.5	23.3#
87	0.0	10.5	15.7#

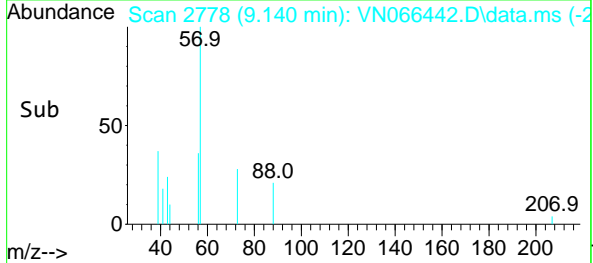
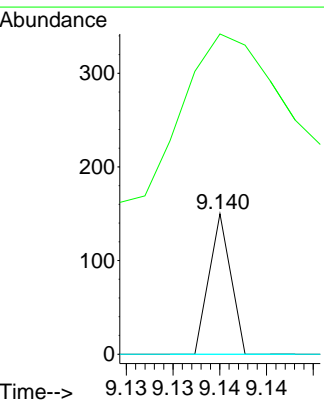


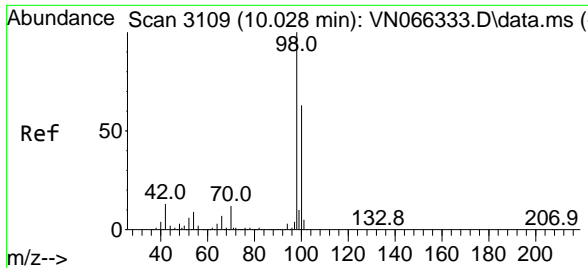
#49  
 1,4-Dioxane  
 Concen: 0.36 ug/l  
 RT: 9.140 min Scan# 2778  
 Delta R.T. 0.003 min  
 Lab File: VN066442.D  
 Acq: 31 Mar 2021 14:34



Tgt Ion: 88 Resp: 24

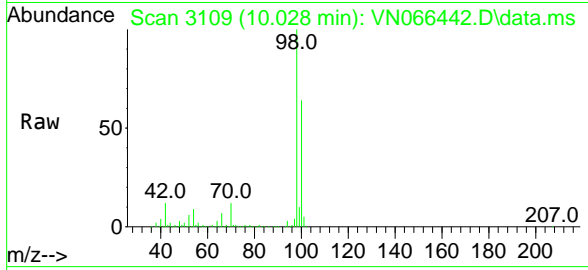
Ion	Ratio	Lower	Upper
88	100		
43	0.0	28.2	42.4#
58	0.0	56.6	84.8#



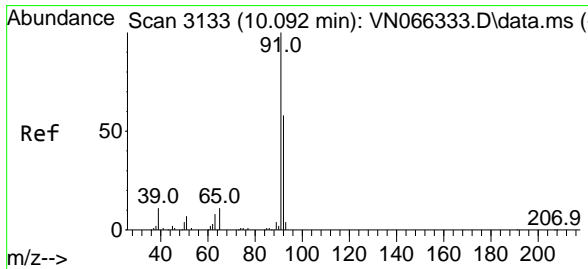
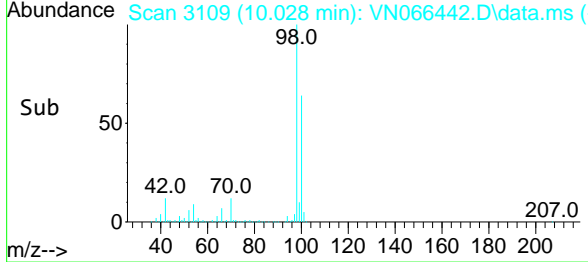
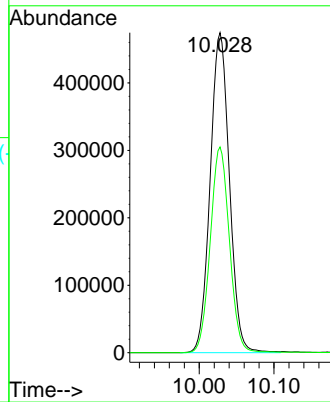


#50  
 Toluene-d8  
 Concen: 53.77 ug/l  
 RT: 10.028 min Scan# 3109  
 Delta R.T. -0.000 min  
 Lab File: VN066442.D  
 Acq: 31 Mar 2021 14:34

Instrument :  
 MSVOA\_N  
 ClientSampled :  
 LMW01DL

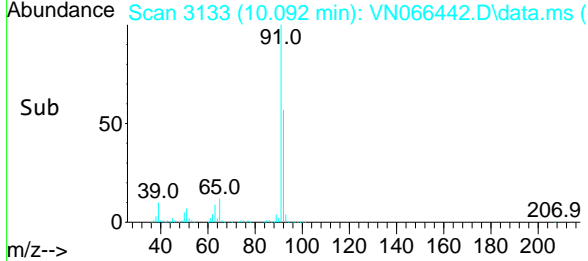
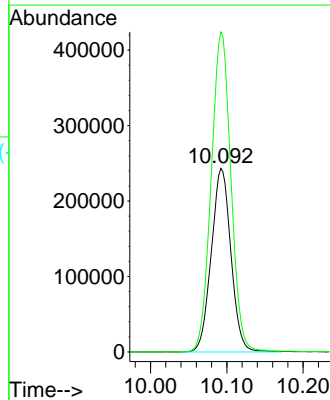
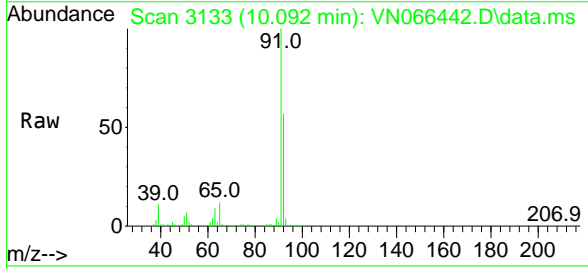


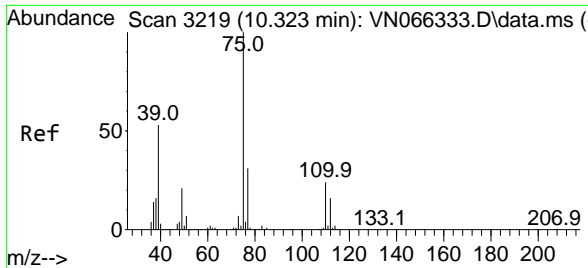
Tgt Ion: 98 Resp: 846673  
 Ion Ratio Lower Upper  
 98 100  
 100 63.9 50.5 75.7



#52  
 Toluene  
 Concen: 39.85 ug/l  
 RT: 10.092 min Scan# 3133  
 Delta R.T. -0.000 min  
 Lab File: VN066442.D  
 Acq: 31 Mar 2021 14:34

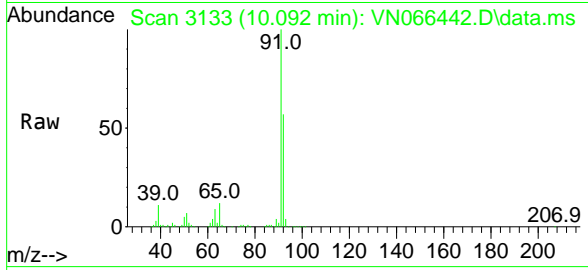
Tgt Ion: 92 Resp: 434599  
 Ion Ratio Lower Upper  
 92 100  
 91 175.7 138.8 208.2



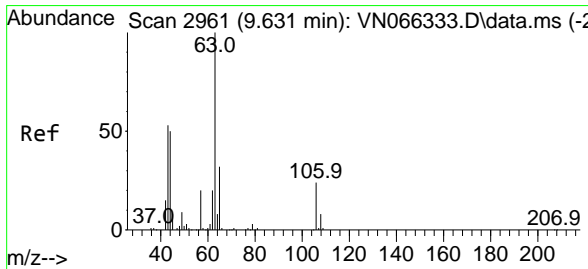
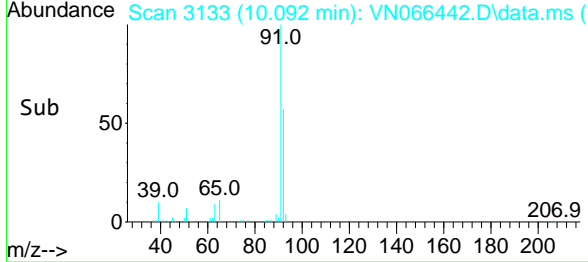
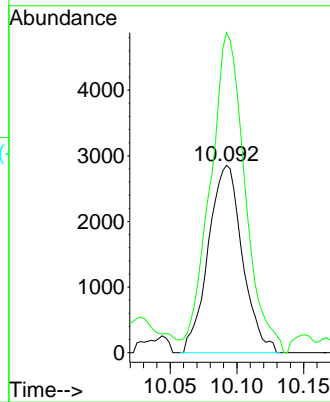


#53  
 t-1,3-Dichloropropene  
 Concen: 0.73 ug/l  
 RT: 10.092 min Scan# 3133  
 Delta R.T. -0.231 min  
 Lab File: VN066442.D  
 Acq: 31 Mar 2021 14:34

Instrument :  
 MSVOA\_N  
 ClientSampled :  
 LMW01DL

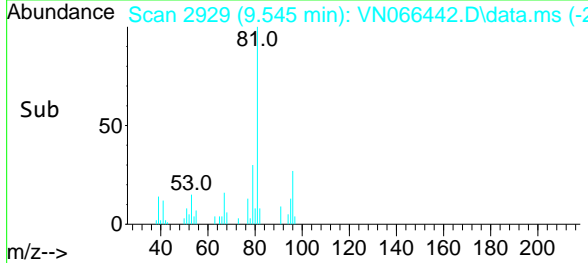
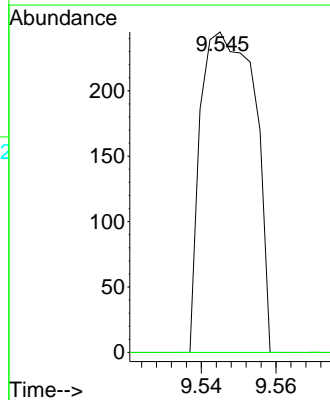
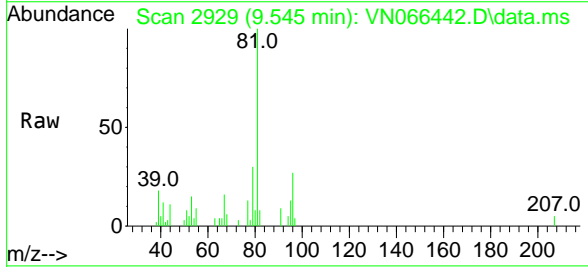


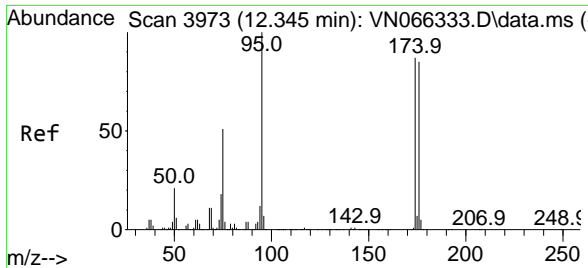
Tgt Ion: 75 Resp: 5062  
 Ion Ratio Lower Upper  
 75 100  
 77 164.2 25.0 37.6#



#58  
 2-Chloroethyl Vinyl ether  
 Concen: 25.90 ug/l  
 RT: 9.545 min Scan# 2929  
 Delta R.T. -0.086 min  
 Lab File: VN066442.D  
 Acq: 31 Mar 2021 14:34

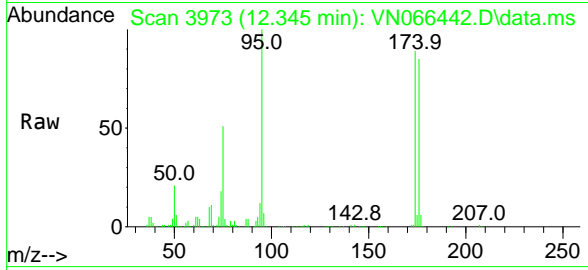
Tgt Ion: 63 Resp: 245  
 Ion Ratio Lower Upper  
 63 100  
 106 0.0 21.0 31.4#





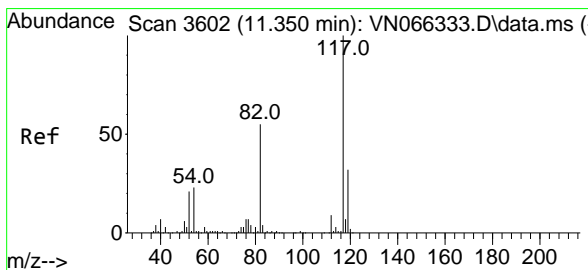
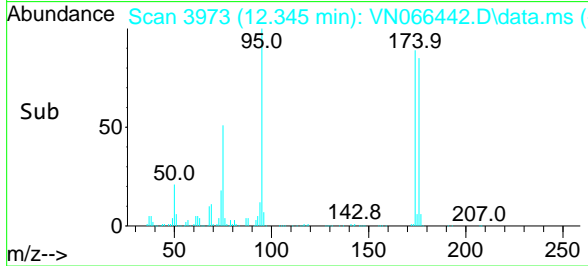
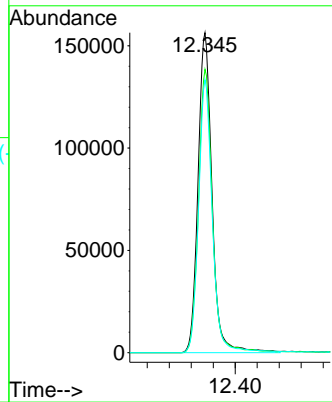
#62  
 4-Bromofluorobenzene  
 Concen: 50.60 ug/l  
 RT: 12.345 min Scan# 3973  
 Delta R.T. -0.000 min  
 Lab File: VN066442.D  
 Acq: 31 Mar 2021 14:34

Instrument :  
 MSVOA\_N  
 ClientSampled :  
 LMW01DL

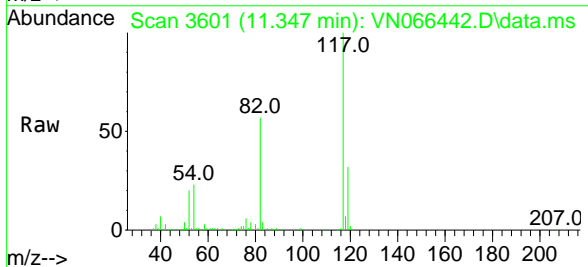


Tgt Ion: 95 Resp: 276721

Ion	Ratio	Lower	Upper
95	100		
174	86.5	0.0	172.2
176	82.9	0.0	167.8

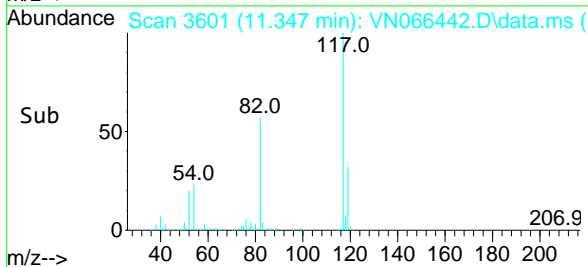
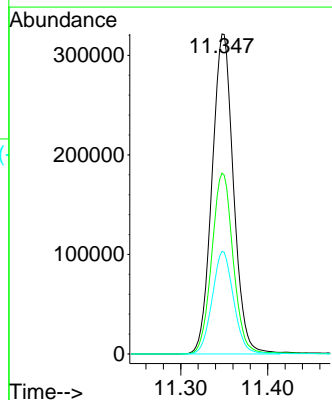


#63  
 Chlorobenzene-d5  
 Concen: 50.00 ug/l  
 RT: 11.347 min Scan# 3601  
 Delta R.T. -0.003 min  
 Lab File: VN066442.D  
 Acq: 31 Mar 2021 14:34

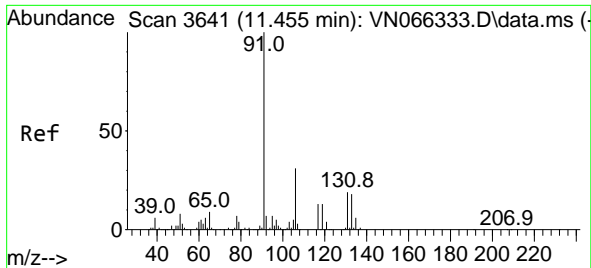


Tgt Ion: 117 Resp: 551512

Ion	Ratio	Lower	Upper
117	100		
82	56.5	44.2	66.4
119	32.1	25.8	38.6



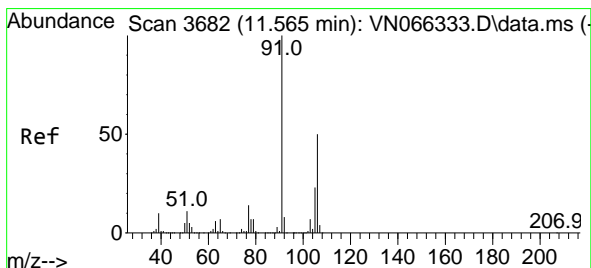
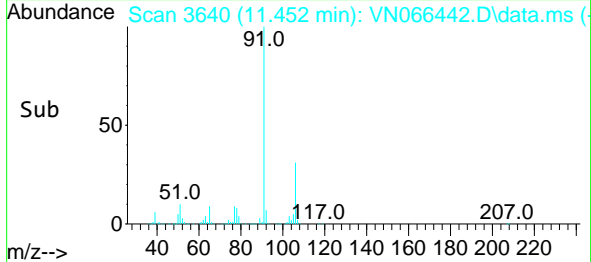
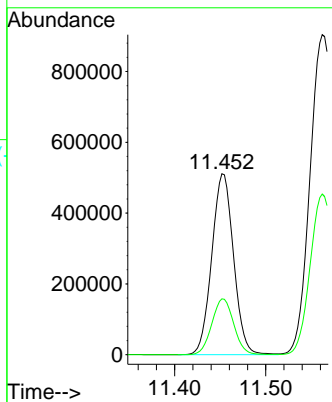
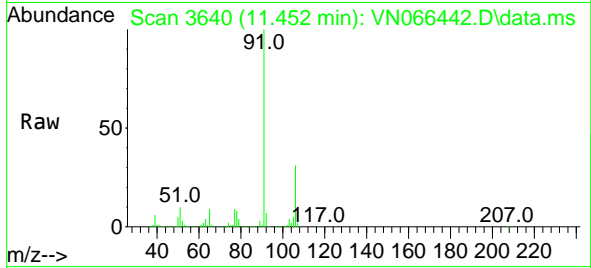




#67  
 Ethyl Benzene  
 Concen: 42.50 ug/l  
 RT: 11.452 min Scan# 3640  
 Delta R.T. -0.003 min  
 Lab File: VN066442.D  
 Acq: 31 Mar 2021 14:34

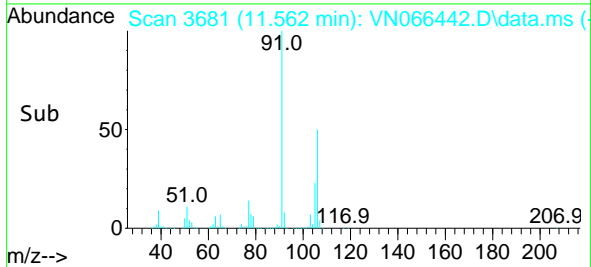
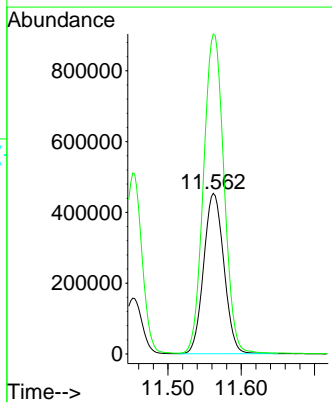
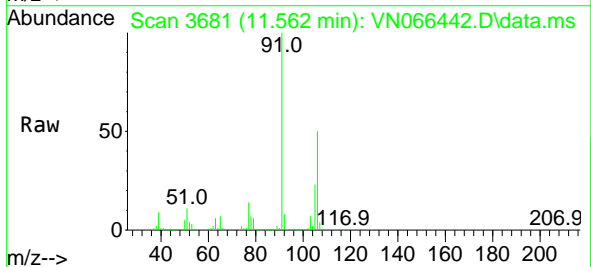
Instrument :  
 MSVOA\_N  
 ClientSampled :  
 LMW01DL

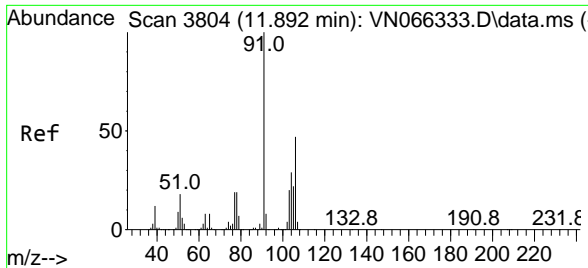
Tgt Ion: 91 Resp: 848246  
 Ion Ratio Lower Upper  
 91 100  
 106 30.9 24.7 37.1



#68  
 m/p-Xylenes  
 Concen: 114.69 ug/l  
 RT: 11.562 min Scan# 3681  
 Delta R.T. -0.003 min  
 Lab File: VN066442.D  
 Acq: 31 Mar 2021 14:34

Tgt Ion:106 Resp: 869768  
 Ion Ratio Lower Upper  
 106 100  
 91 202.5 162.7 244.1

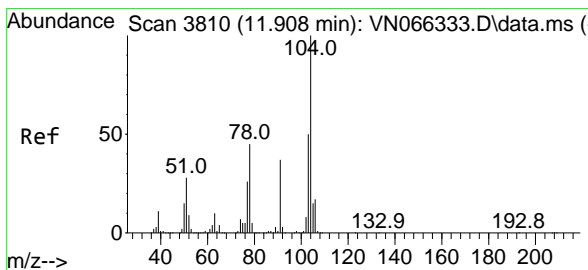
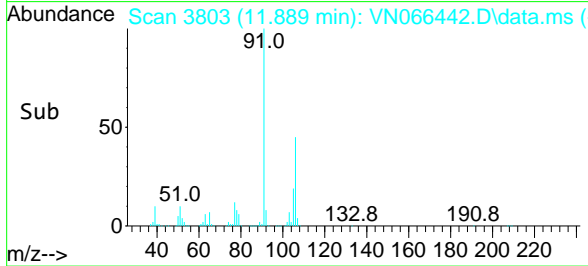
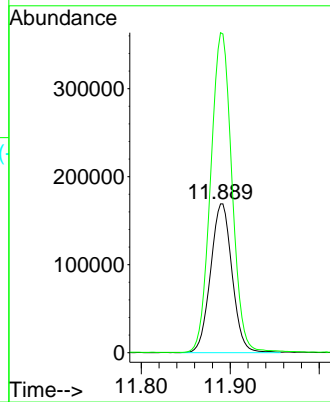
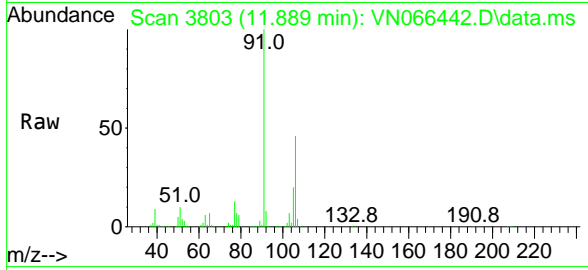




#69  
 o-Xylene  
 Concen: 38.78 ug/l  
 RT: 11.889 min Scan# 3803  
 Delta R.T. -0.003 min  
 Lab File: VN066442.D  
 Acq: 31 Mar 2021 14:34

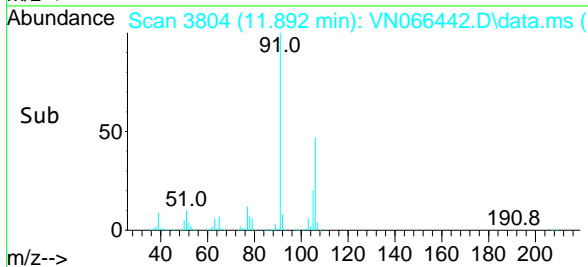
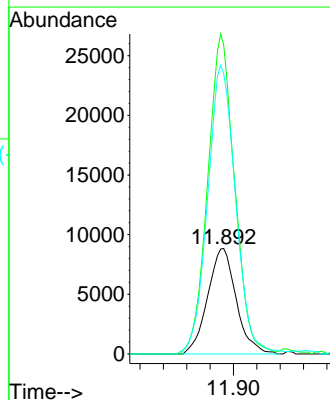
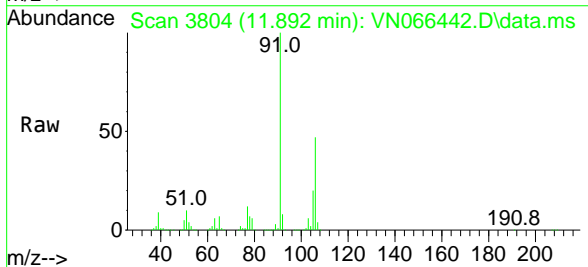
Instrument :  
 MSVOA\_N  
 ClientSampled :  
 LMW01DL

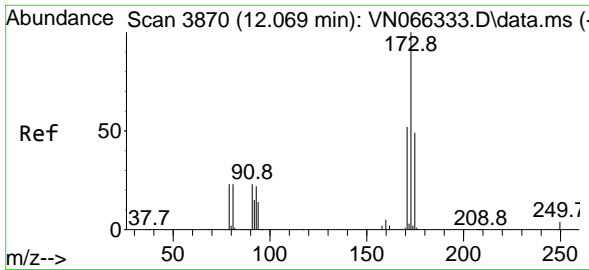
Tgt Ion:106 Resp: 283732  
 Ion Ratio Lower Upper  
 106 100  
 91 213.0 107.1 321.4



#70  
 Styrene  
 Concen: 1.27 ug/l  
 RT: 11.892 min Scan# 3804  
 Delta R.T. -0.016 min  
 Lab File: VN066442.D  
 Acq: 31 Mar 2021 14:34

Tgt Ion:104 Resp: 15027  
 Ion Ratio Lower Upper  
 104 100  
 78 284.8 40.7 61.1#  
 103 268.1 44.2 66.2#

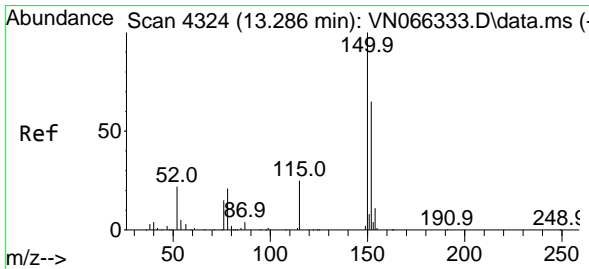
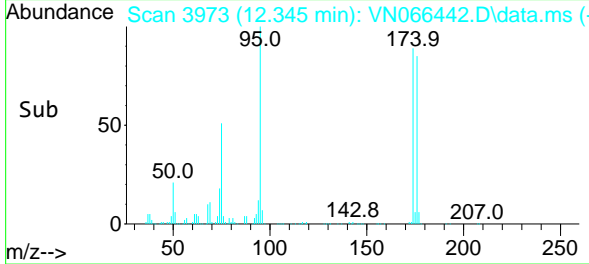
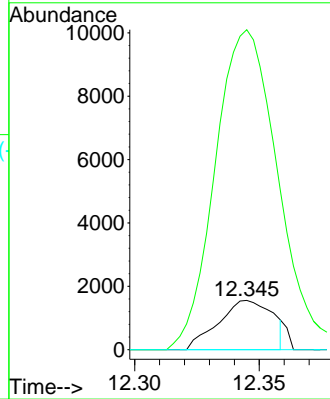
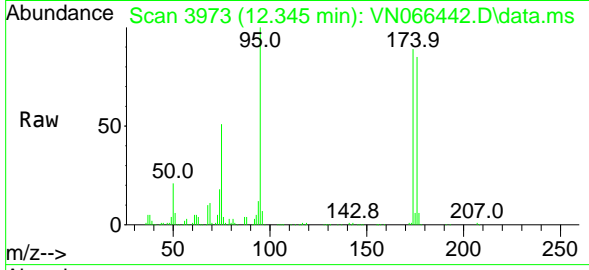




#71  
 Bromoform  
 Concen: 0.67 ug/l  
 RT: 12.345 min Scan# 3973  
 Delta R.T. 0.276 min  
 Lab File: VN066442.D  
 Acq: 31 Mar 2021 14:34

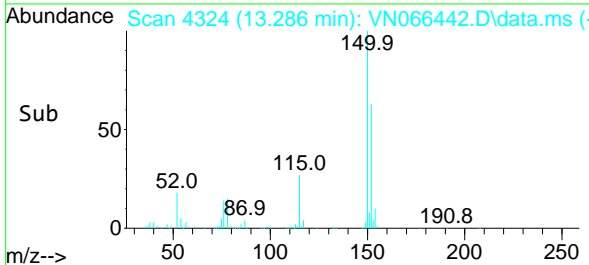
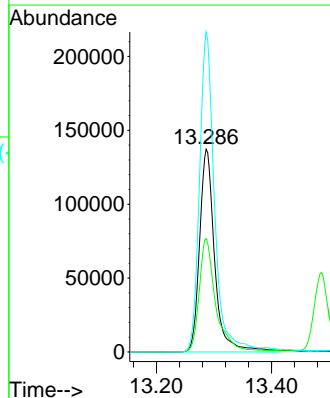
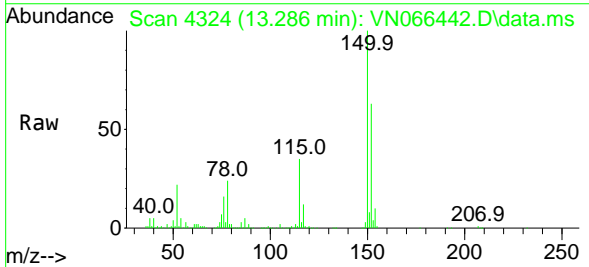
Instrument :  
 MSVOA\_N  
 ClientSampled :  
 LMW01DL

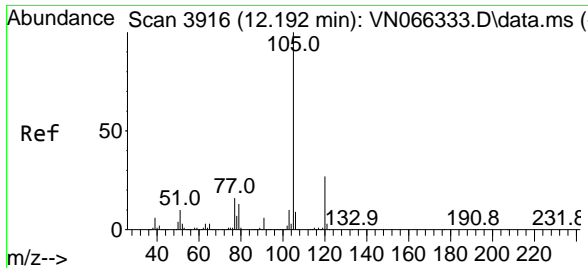
Tgt Ion	Resp	Lower	Upper
173	100		
175	664.2	24.3	72.8#
254	0.0	0.0	0.0



#72  
 1,4-Dichlorobenzene-d4  
 Concen: 50.00 ug/l  
 RT: 13.286 min Scan# 4324  
 Delta R.T. 0.000 min  
 Lab File: VN066442.D  
 Acq: 31 Mar 2021 14:34

Tgt Ion	Resp	Lower	Upper
152	100		
115	60.6	27.8	83.4
150	156.0	0.0	348.4

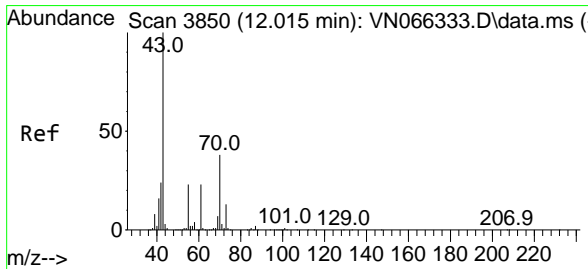
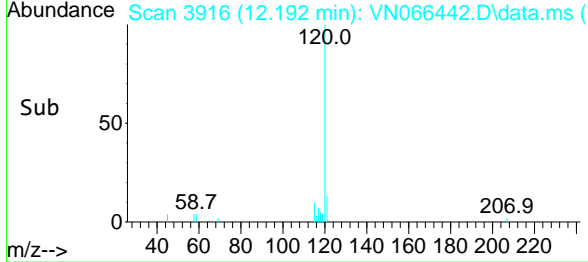
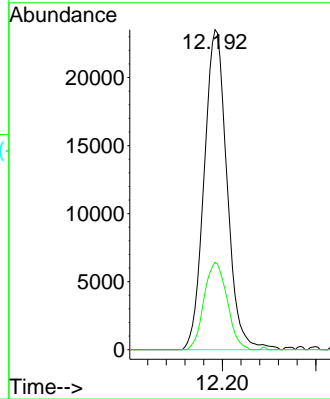
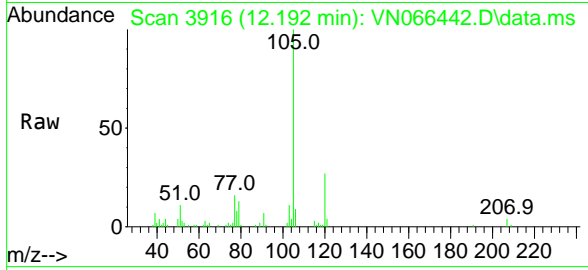




#73  
 Isopropylbenzene  
 Concen: 2.14 ug/l  
 RT: 12.192 min Scan# 3916  
 Delta R.T. -0.000 min  
 Lab File: VN066442.D  
 Acq: 31 Mar 2021 14:34

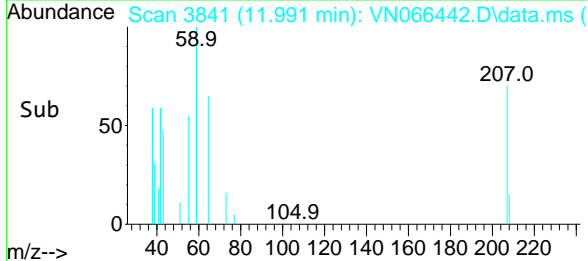
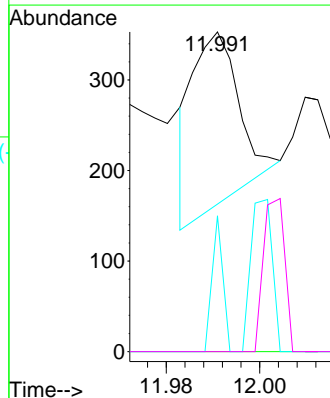
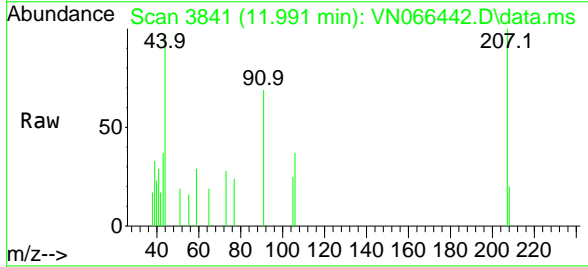
Instrument :  
 MSVOA\_N  
 ClientSampled :  
 LMW01DL

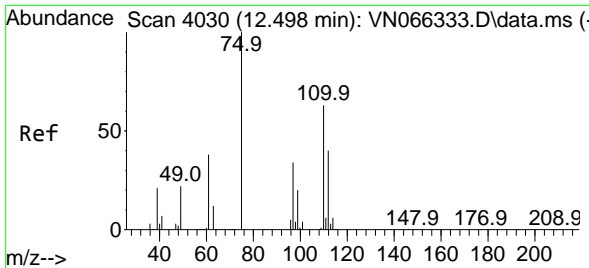
Tgt Ion:105 Resp: 39945  
 Ion Ratio Lower Upper  
 105 100  
 120 27.4 13.3 39.8



#74  
 N-ethyl acetate  
 Concen: 3.21 ug/l  
 RT: 11.991 min Scan# 3841  
 Delta R.T. -0.024 min  
 Lab File: VN066442.D  
 Acq: 31 Mar 2021 14:34

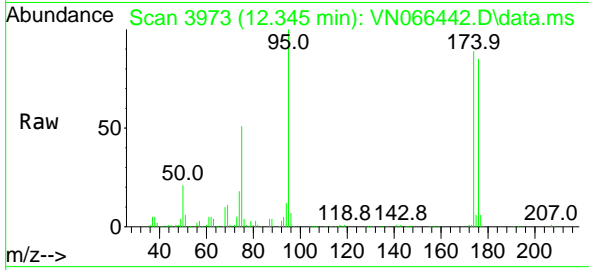
Tgt Ion: 43 Resp: 135  
 Ion Ratio Lower Upper  
 43 100  
 70 0.0 31.2 46.8#  
 55 17.8 18.6 28.0#  
 61 0.0 18.2 27.4#



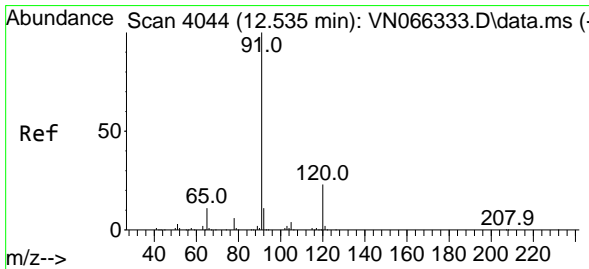
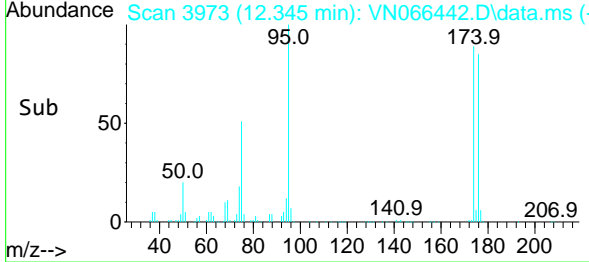
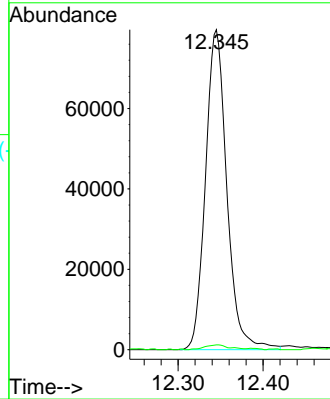


#76  
 1,2,3-Trichloropropane  
 Concen: 25.26 ug/l  
 RT: 12.345 min Scan# 3973  
 Delta R.T. -0.153 min  
 Lab File: VN066442.D  
 Acq: 31 Mar 2021 14:34

Instrument :  
 MSVOA\_N  
 ClientSampleID :  
 LMW01DL

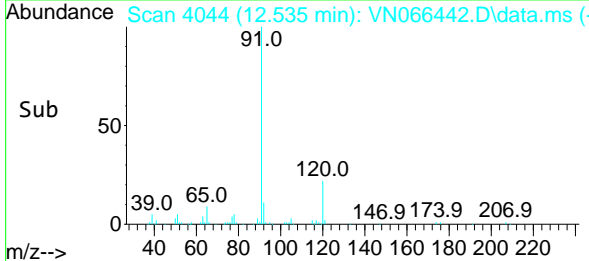
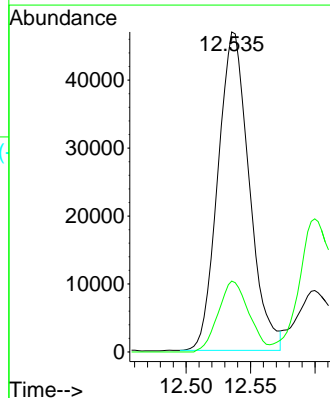
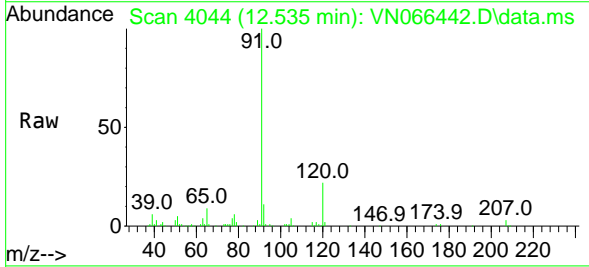


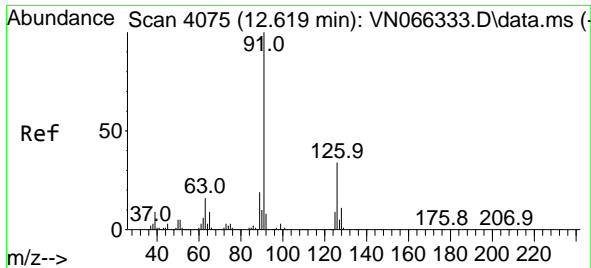
Tgt Ion: 75 Resp: 138977  
 Ion Ratio Lower Upper  
 75 100  
 77 1.5 0.0 0.0#



#78  
 n-propylbenzene  
 Concen: 3.90 ug/l  
 RT: 12.535 min Scan# 4044  
 Delta R.T. -0.000 min  
 Lab File: VN066442.D  
 Acq: 31 Mar 2021 14:34

Tgt Ion: 91 Resp: 79023  
 Ion Ratio Lower Upper  
 91 100  
 120 21.9 11.7 35.1

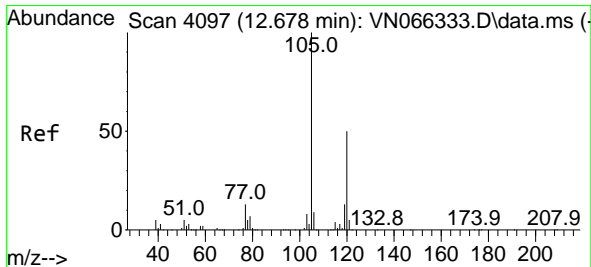
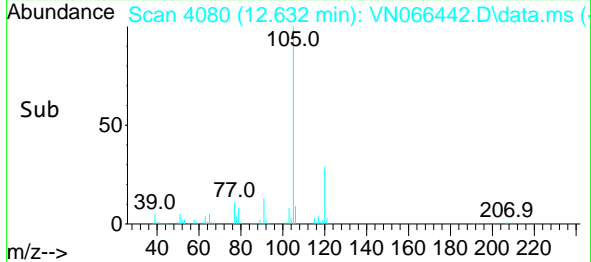
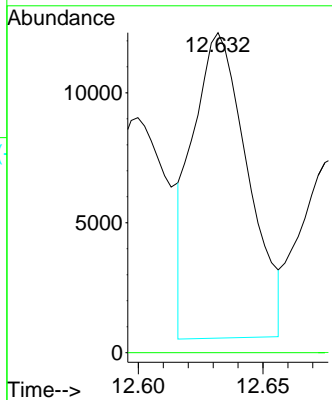
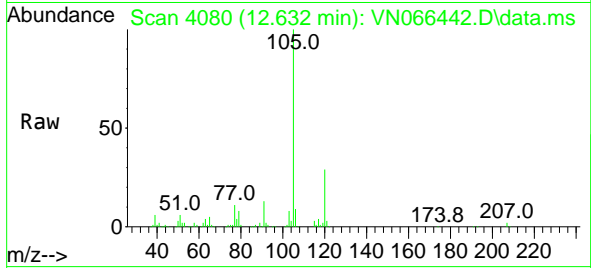




#79  
 2-Chlorotoluene  
 Concen: 1.44 ug/l  
 RT: 12.632 min Scan# 4080  
 Delta R.T. 0.013 min  
 Lab File: VN066442.D  
 Acq: 31 Mar 2021 14:34

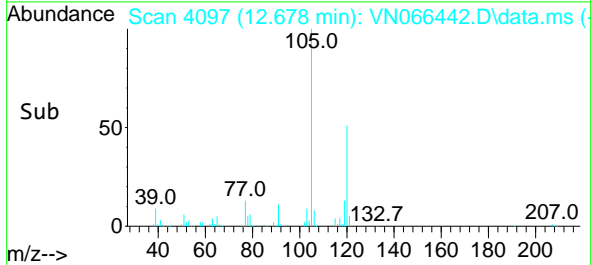
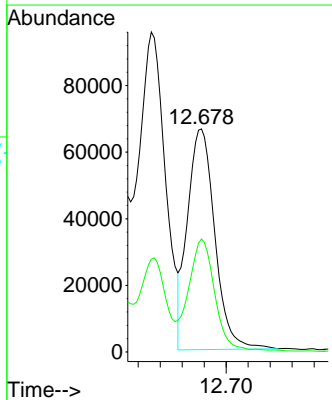
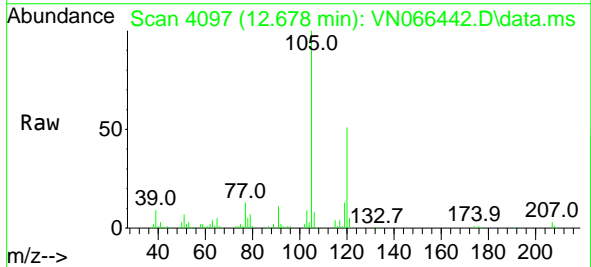
Instrument :  
 MSVOA\_N  
 ClientSampled :  
 LMW01DL

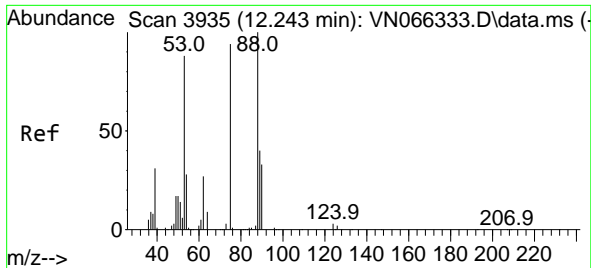
Tgt Ion: 91 Resp: 18008  
 Ion Ratio Lower Upper  
 91 100  
 126 0.0 17.2 51.5#



#80  
 1,3,5-Trimethylbenzene  
 Concen: 7.51 ug/l  
 RT: 12.678 min Scan# 4097  
 Delta R.T. -0.000 min  
 Lab File: VN066442.D  
 Acq: 31 Mar 2021 14:34

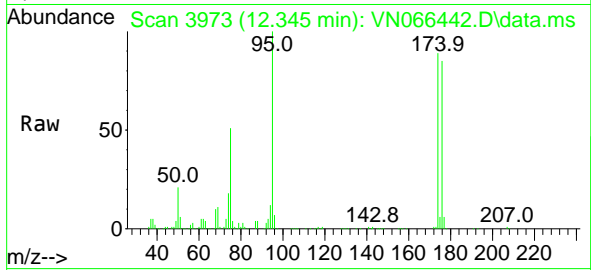
Tgt Ion: 105 Resp: 114600  
 Ion Ratio Lower Upper  
 105 100  
 120 46.0 24.5 73.5



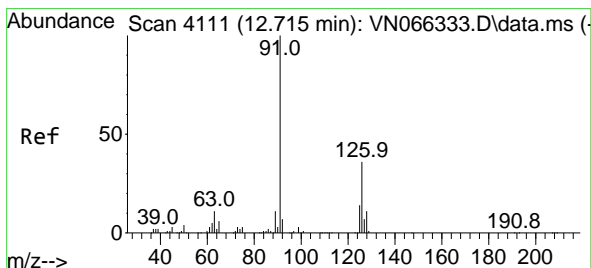
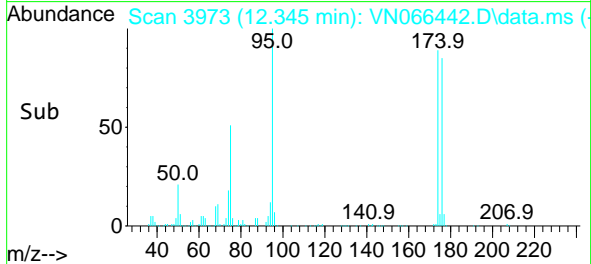
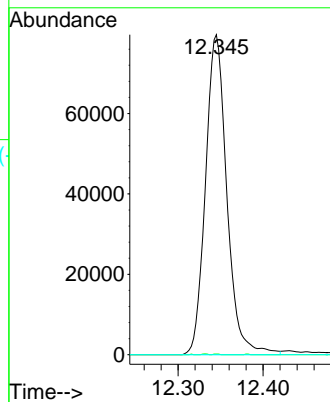


#81  
 trans-1,4-Dichloro-2-butene  
 Concen: 75.95 ug/l  
 RT: 12.345 min Scan# 3973  
 Delta R.T. 0.102 min  
 Lab File: VN066442.D  
 Acq: 31 Mar 2021 14:34

Instrument :  
 MSVOA\_N  
 ClientSampled :  
 LMW01DL

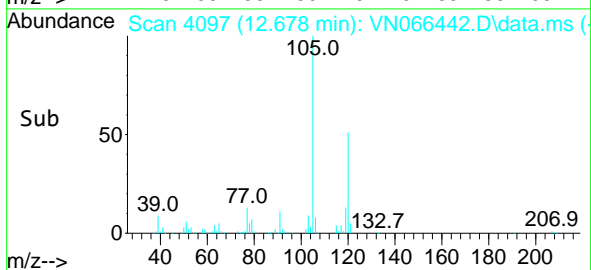
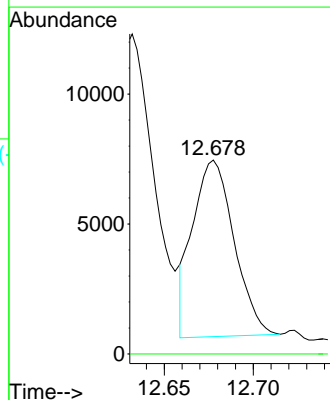
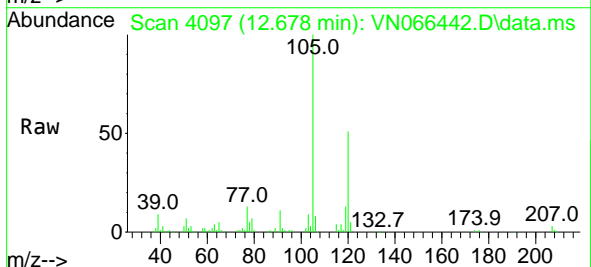


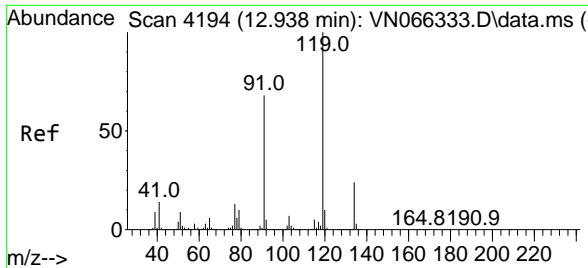
Tgt Ion: 75 Resp: 138977  
 Ion Ratio Lower Upper  
 75 100  
 53 0.1 76.1 114.1#  
 89 0.0 35.7 53.5#



#82  
 4-Chlorotoluene  
 Concen: 0.88 ug/l  
 RT: 12.678 min Scan# 4097  
 Delta R.T. -0.038 min  
 Lab File: VN066442.D  
 Acq: 31 Mar 2021 14:34

Tgt Ion: 91 Resp: 10979  
 Ion Ratio Lower Upper  
 91 100  
 126 0.0 16.6 49.8#



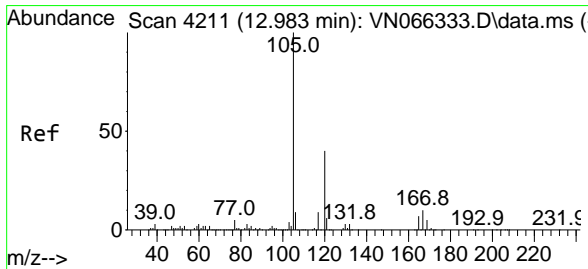
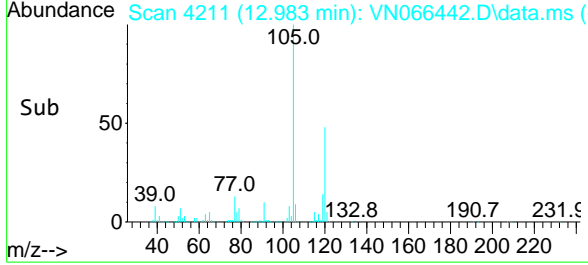
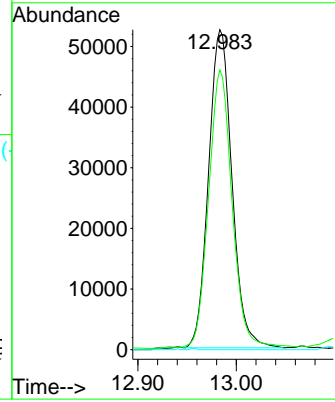
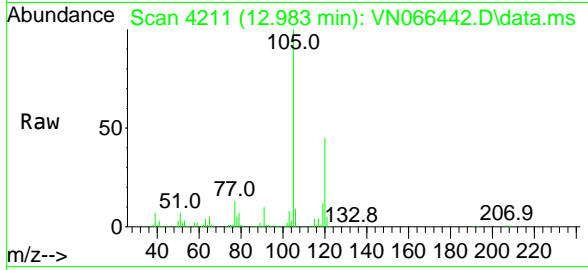


#83  
 tert-Butylbenzene  
 Concen: 6.60 ug/l  
 RT: 12.983 min Scan# 4211  
 Delta R.T. 0.046 min  
 Lab File: VN066442.D  
 Acq: 31 Mar 2021 14:34

Instrument :  
 MSVOA\_N  
 ClientSampled :  
 LMW01DL

Tgt Ion:119 Resp: 86677

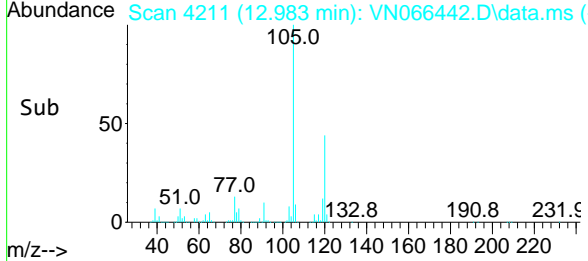
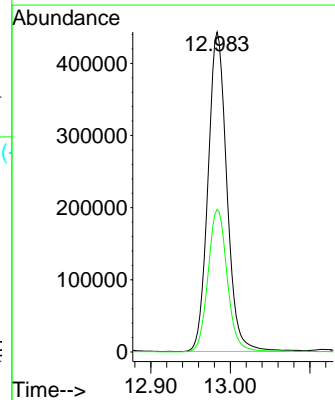
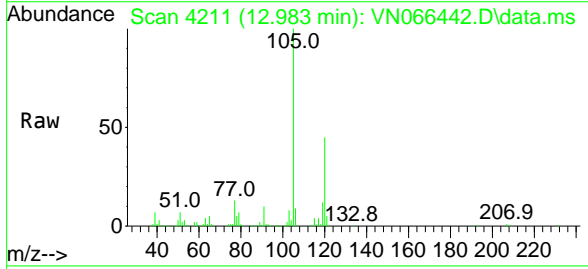
Ion	Ratio	Lower	Upper
119	100		
91	87.4	33.3	99.8
134	0.0	12.9	38.6#



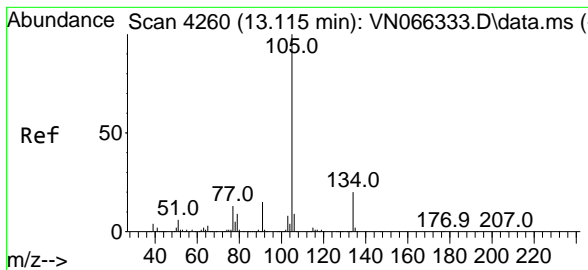
#84  
 1,2,4-Trimethylbenzene  
 Concen: 49.16 ug/l  
 RT: 12.983 min Scan# 4211  
 Delta R.T. -0.000 min  
 Lab File: VN066442.D  
 Acq: 31 Mar 2021 14:34

Tgt Ion:105 Resp: 728785

Ion	Ratio	Lower	Upper
105	100		
120	45.4	23.1	69.2



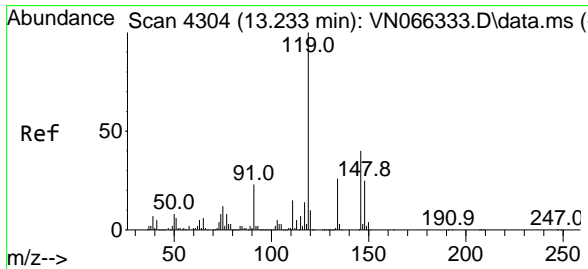
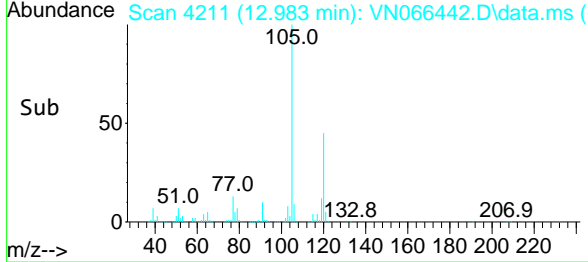
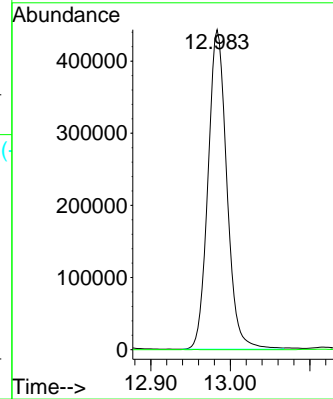
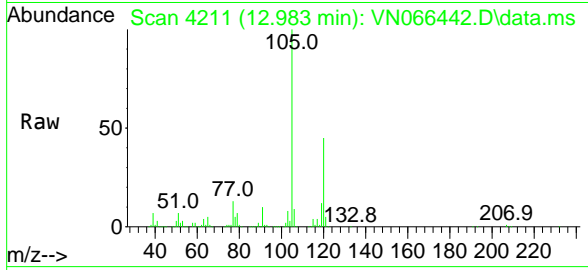




#85  
 sec-Butylbenzene  
 Concen: 42.82 ug/l  
 RT: 12.983 min Scan# 4211  
 Delta R.T. -0.131 min  
 Lab File: VN066442.D  
 Acq: 31 Mar 2021 14:34

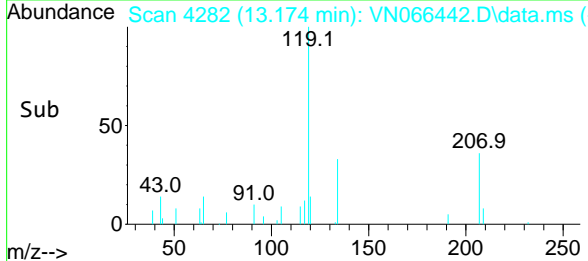
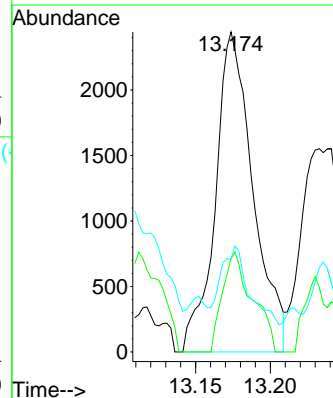
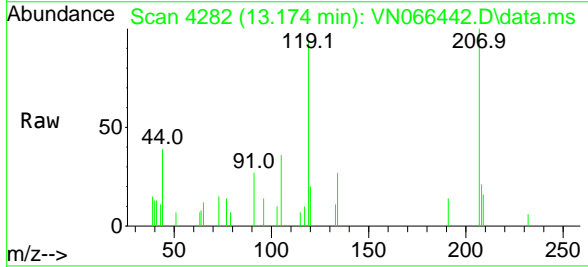
Instrument :  
 MSVOA\_N  
 ClientSampled :  
 LMW01DL

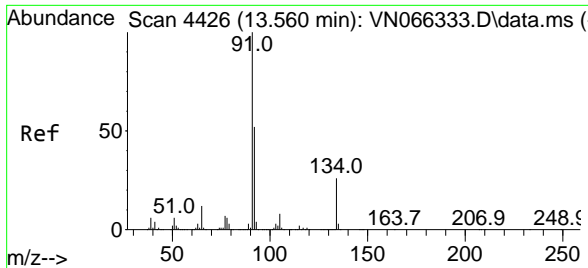
Tgt Ion:105 Resp: 728785  
 Ion Ratio Lower Upper  
 105 100  
 134 0.0 9.9 29.7#



#86  
 p-Isopropyltoluene  
 Concen: 0.28 ug/l  
 RT: 13.174 min Scan# 4282  
 Delta R.T. -0.059 min  
 Lab File: VN066442.D  
 Acq: 31 Mar 2021 14:34

Tgt Ion:119 Resp: 4295  
 Ion Ratio Lower Upper  
 119 100  
 134 24.8 12.9 38.7  
 91 0.0 11.5 34.5#



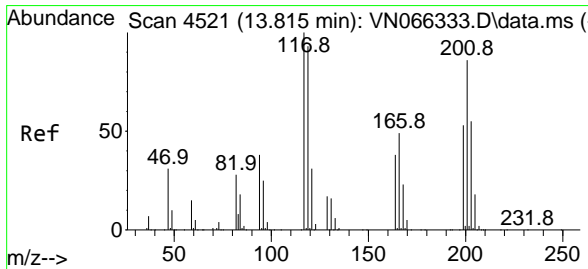
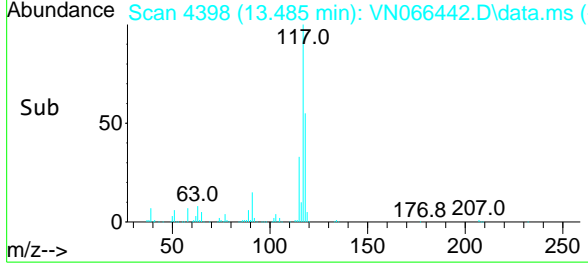
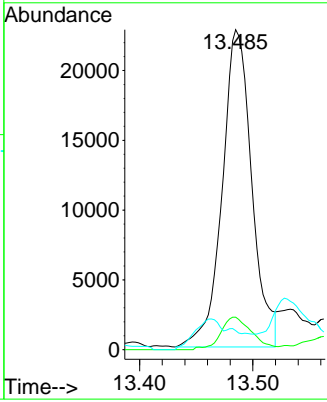
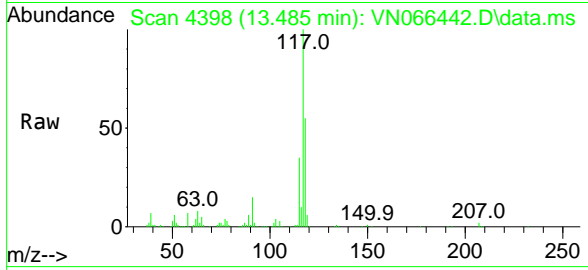


#89  
 n-Butylbenzene  
 Concen: 3.28 ug/l  
 RT: 13.485 min Scan# 4398  
 Delta R.T. -0.075 min  
 Lab File: VN066442.D  
 Acq: 31 Mar 2021 14:34

Instrument :  
 MSVOA\_N  
 ClientSampled :  
 LMW01DL

Tgt Ion: 91 Resp: 41283

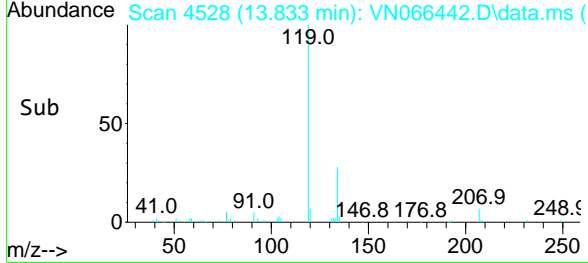
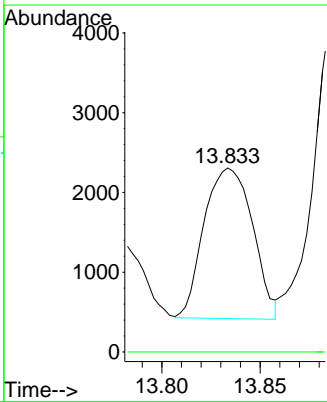
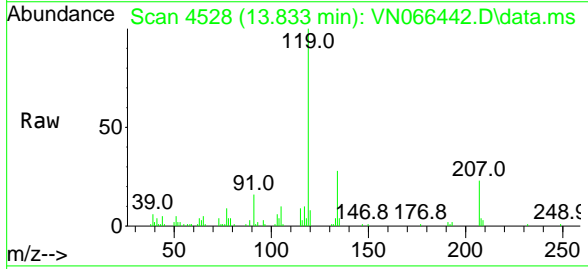
Ion	Ratio	Lower	Upper
91	100		
92	10.8	26.1	78.3#
134	0.0	12.8	38.4#

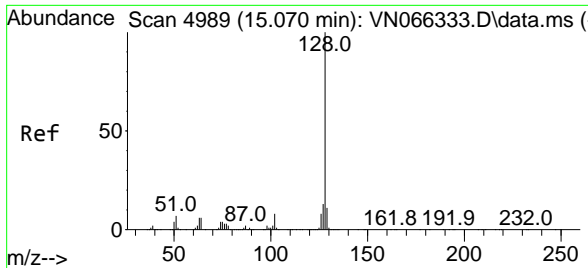


#90  
 Hexachloroethane  
 Concen: 1.18 ug/l  
 RT: 13.833 min Scan# 4528  
 Delta R.T. 0.019 min  
 Lab File: VN066442.D  
 Acq: 31 Mar 2021 14:34

Tgt Ion: 117 Resp: 3244

Ion	Ratio	Lower	Upper
117	100		
201	0.0	44.0	131.8#





#95  
 Naphthalene  
 Concen: 16.49 ug/l  
 RT: 15.070 min Scan# 4989  
 Delta R.T. -0.000 min  
 Lab File: VN066442.D  
 Acq: 31 Mar 2021 14:34

Instrument :  
 MSVOA\_N  
 ClientSampleID :  
 LMW01DL

Tgt Ion:128 Resp: 221789

Ion	Ratio	Lower	Upper
128	100		
127	13.2	10.5	15.7
129	10.7	8.5	12.7

