

Data Path : Z:\voasrv\HPCHEM1\MSVOA_N\Data\VN040422\
 Data File : VN071835.D
 Acq On : 04 Apr 2022 16:41
 Operator : JC\MD
 Sample : N2175-01
 Misc : 5.0mL/MSVOA_N/WATER
 ALS Vial : 16 Sample Multiplier: 1

Instrument :
 MSVOA_N
 ClientSampleId :
 023-OUTFALL

Quant Time: Apr 05 01:19:18 2022
 Quant Method : Z:\voasrv\HPCHEM1\MSVOA_N\methods\82N033022W.M
 Quant Title : SW846 8260
 QLast Update : Thu Mar 31 01:57:54 2022
 Response via : Initial Calibration

Compound	R.T.	QIon	Response	Conc	Units	Dev(Min)

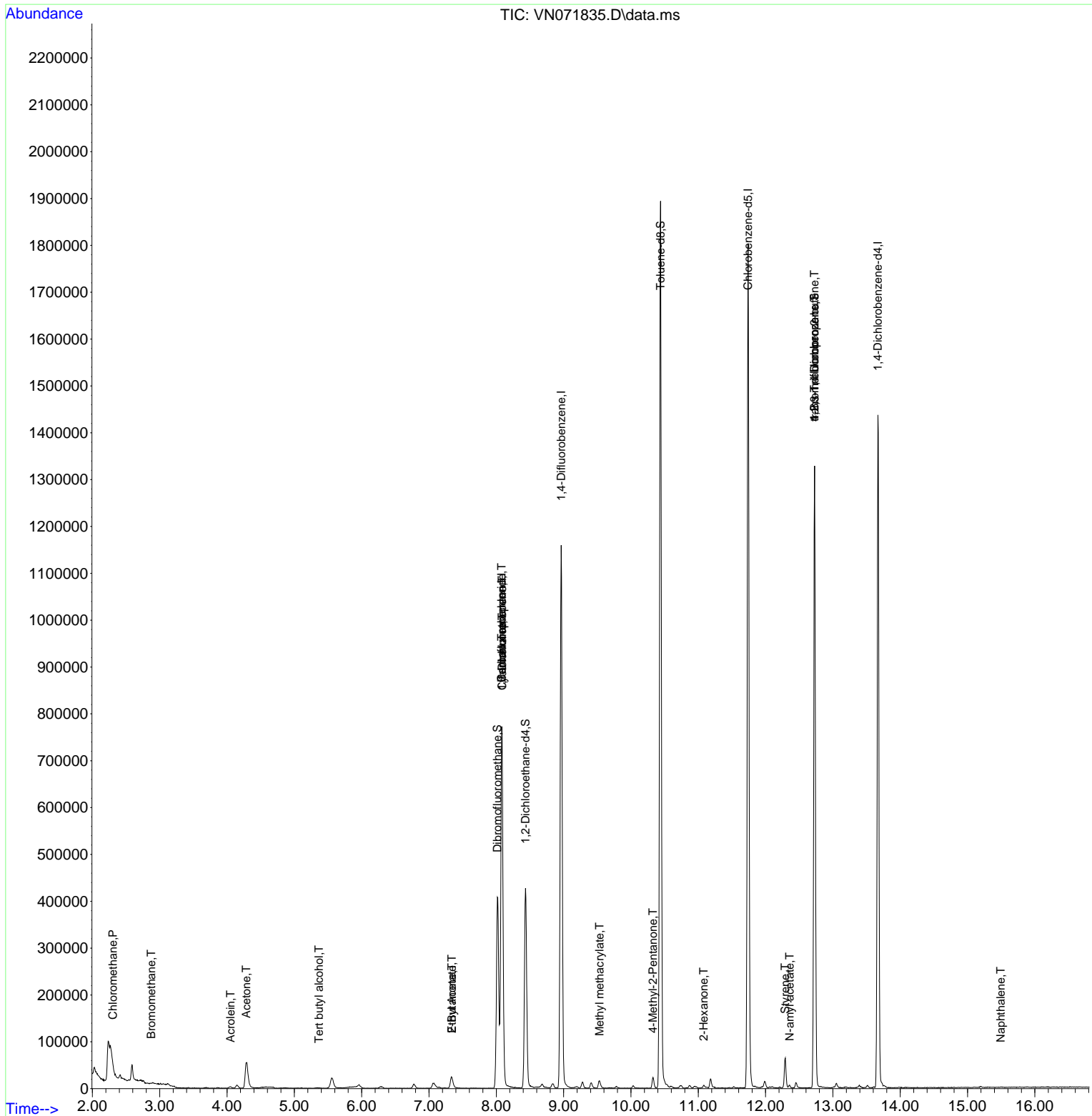
Internal Standards						
1) Pentafluorobenzene	8.080	168	637363	50.000	ug/l	0.00
34) 1,4-Difluorobenzene	8.963	114	1091083	50.000	ug/l	0.00
63) Chlorobenzene-d5	11.739	117	1113550	50.000	ug/l	0.00
72) 1,4-Dichlorobenzene-d4	13.668	152	423567	50.000	ug/l	0.00
System Monitoring Compounds						
33) 1,2-Dichloroethane-d4	8.433	65	359160	49.361	ug/l	0.00
Spiked Amount	50.000	Range 61 - 141	Recovery	=	98.720%	
35) Dibromofluoromethane	8.016	113	310468	48.356	ug/l	0.00
Spiked Amount	50.000	Range 69 - 133	Recovery	=	96.720%	
50) Toluene-d8	10.439	98	1376479	52.409	ug/l	0.00
Spiked Amount	50.000	Range 65 - 126	Recovery	=	104.820%	
62) 4-Bromofluorobenzene	12.727	95	479226	56.417	ug/l	0.00
Spiked Amount	50.000	Range 58 - 135	Recovery	=	112.840%	
Target Compounds						
						Qvalue
3) Chloromethane	2.304	50	3948	0.615	ug/l #	64
5) Bromomethane	2.875	94	1265	0.276	ug/l	99
11) Tert butyl alcohol	5.363	59	2399	2.032	ug/l #	72
13) Acrolein	4.051	56	4864	3.378	ug/l	90
16) Acetone	4.287	43	106913	34.382	ug/l	100
18) Methyl Acetate	4.851	43	2376	Below Cal	#	54
25) 2-Butanone	7.339	43	43081	9.610	ug/l	95
31) Cyclohexane	8.086	56	10805	1.092	ug/l #	1
36) 1,1-Dichloropropene	8.086	75	44600	4.974	ug/l #	47
37) Ethyl Acetate	7.339	43	43081	4.390	ug/l #	67
38) Carbon Tetrachloride	8.080	117	56197	6.395	ug/l #	16
48) Methyl methacrylate	9.533	41	4349	0.642	ug/l #	36
51) 4-Methyl-2-Pentanone	10.327	43	16578	1.767	ug/l	99
59) 2-Hexanone	11.080	43	4920	0.745	ug/l	95
70) Styrene	12.292	104	36696	1.682	ug/l	89
74) N-amyl acetate	12.357	43	5081	0.497	ug/l #	44
76) 1,2,3-Trichloropropane	12.727	75	235107	23.961	ug/l #	1
81) trans-1,4-Dichloro-2-b...	12.727	75	235107	74.253	ug/l #	10
95) Naphthalene	15.492	128	476	3.826	ug/l #	69

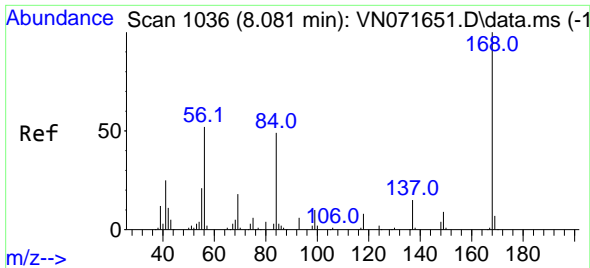
(#) = qualifier out of range (m) = manual integration (+) = signals summed

Data Path : Z:\voasrv\HPCHEM1\MSVOA_N\Data\VN040422\
 Data File : VN071835.D
 Acq On : 04 Apr 2022 16:41
 Operator : JC\MD
 Sample : N2175-01
 Misc : 5.0mL/MSVOA_N/WATER
 ALS Vial : 16 Sample Multiplier: 1

Instrument :
 MSVOA_N
 ClientSampleId :
 023-OUTFALL

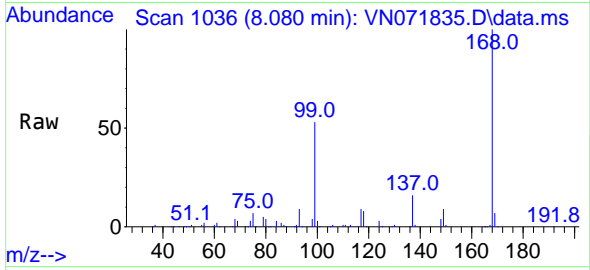
Quant Time: Apr 05 01:19:18 2022
 Quant Method : Z:\voasrv\HPCHEM1\MSVOA_N\methods\82N033022W.M
 Quant Title : SW846 8260
 QLast Update : Thu Mar 31 01:57:54 2022
 Response via : Initial Calibration



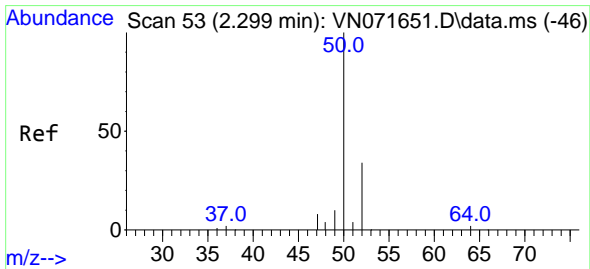
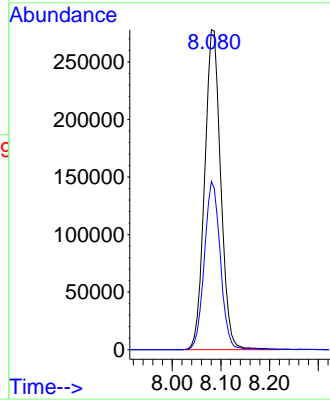
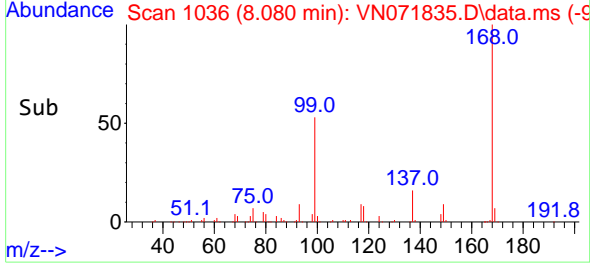


#1
 Pentafluorobenzene
 Concen: 50.000 ug/l
 RT: 8.080 min Scan# 10
 Delta R.T. -0.001 min
 Lab File: VN071835.D
 Acq: 04 Apr 2022 16:41

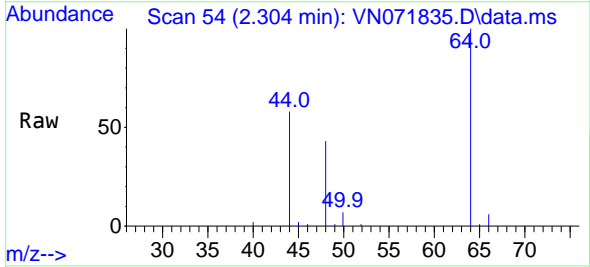
Instrument :
 MSVOA_N
 ClientSampleId :
 023-OUTFALL



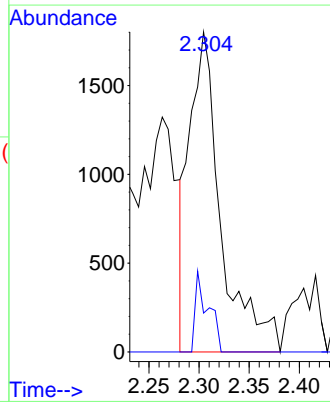
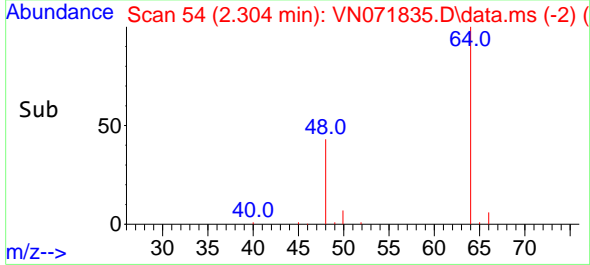
Tgt Ion:168 Resp: 637363
 Ion Ratio Lower Upper
 168 100
 99 52.6 42.3 63.5

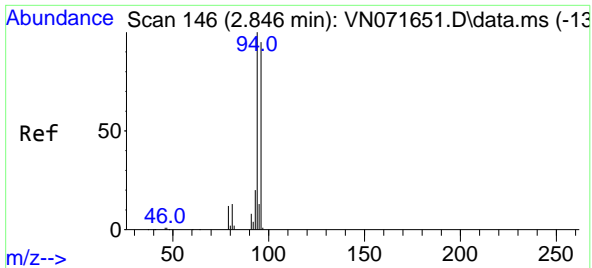


#3
 Chloromethane
 Concen: 0.615 ug/l
 RT: 2.304 min Scan# 54
 Delta R.T. 0.005 min
 Lab File: VN071835.D
 Acq: 04 Apr 2022 16:41



Tgt Ion: 50 Resp: 3948
 Ion Ratio Lower Upper
 50 100
 52 12.2 25.7 38.5#

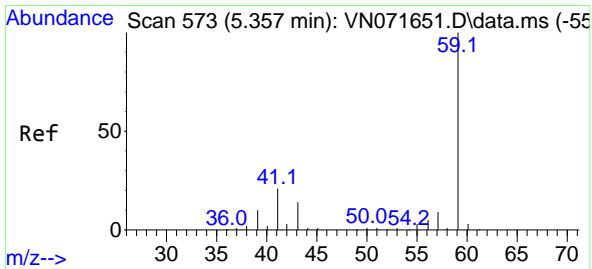
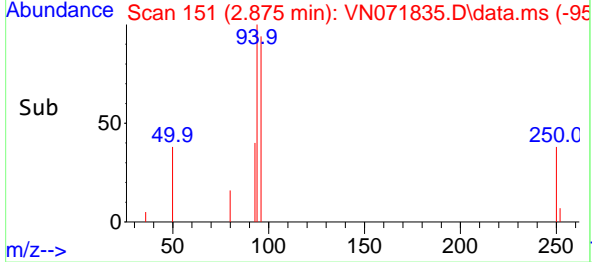
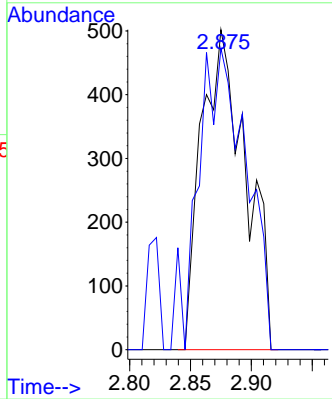
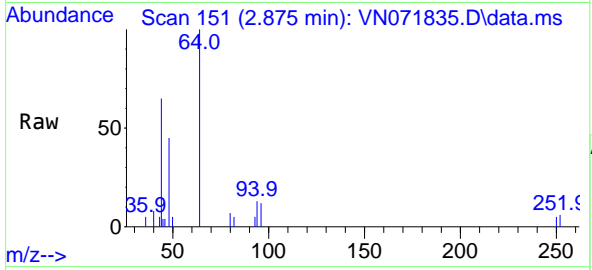




#5
 Bromomethane
 Concen: 0.276 ug/l
 RT: 2.875 min Scan# 11
 Delta R.T. 0.029 min
 Lab File: VN071835.D
 Acq: 04 Apr 2022 16:41

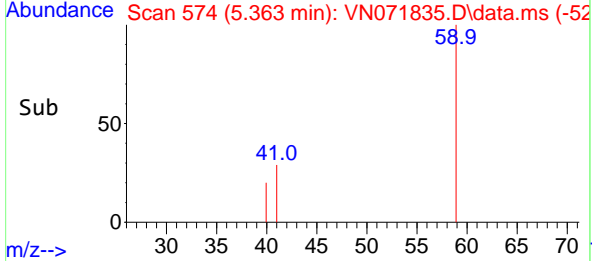
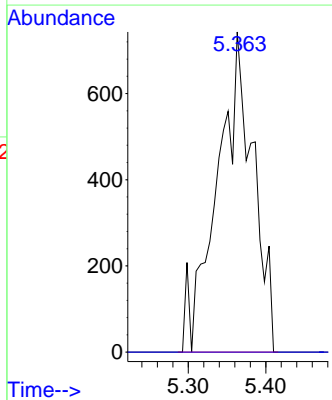
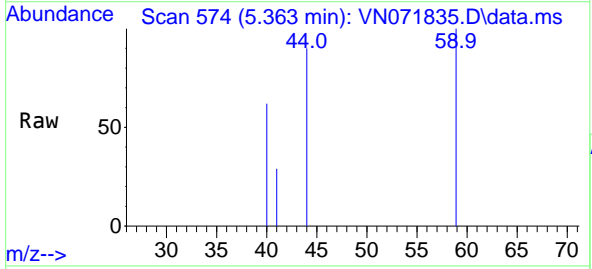
Instrument : MSVOA_N
 ClientSampleId : 023-OUTFALL

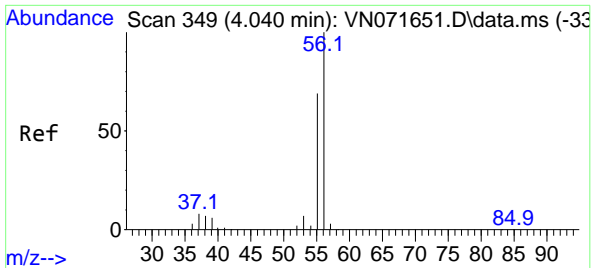
Tgt Ion: 94 Resp: 1265
 Ion Ratio Lower Upper
 94 100
 96 94.2 76.0 114.0



#11
 Tert butyl alcohol
 Concen: 2.032 ug/l
 RT: 5.363 min Scan# 574
 Delta R.T. 0.006 min
 Lab File: VN071835.D
 Acq: 04 Apr 2022 16:41

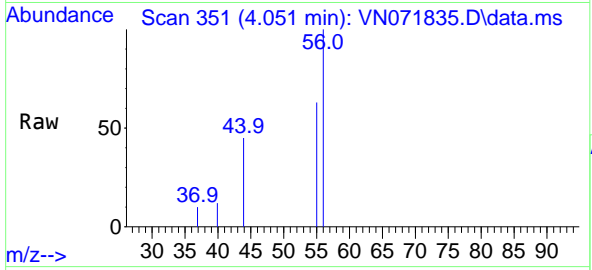
Tgt Ion: 59 Resp: 2399
 Ion Ratio Lower Upper
 59 100
 57 0.0 8.3 12.5#



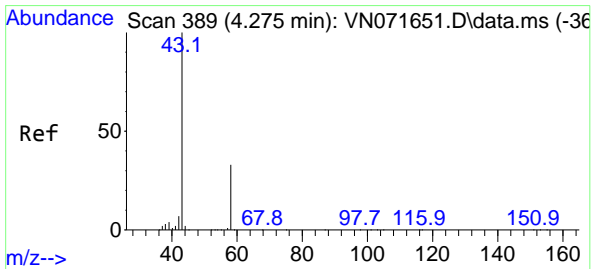
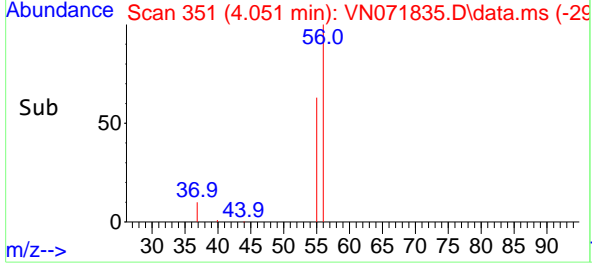
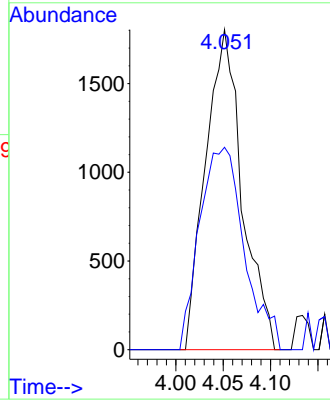


#13
 Acrolein
 Concen: 3.378 ug/l
 RT: 4.051 min Scan# 311
 Delta R.T. 0.011 min
 Lab File: VN071835.D
 Acq: 04 Apr 2022 16:41

Instrument : MSVOA_N
 ClientSampleId : 023-OUTFALL

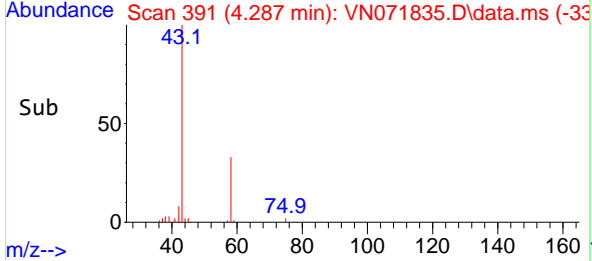
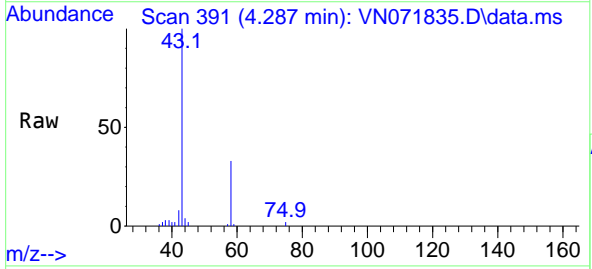
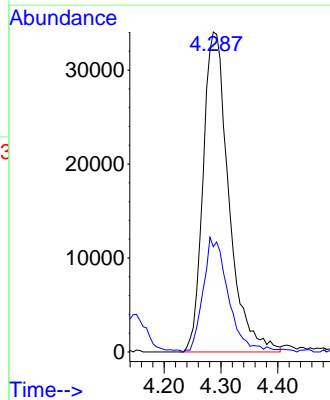


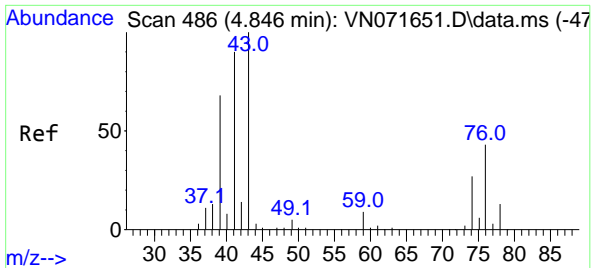
Tgt Ion: 56 Resp: 4864
 Ion Ratio Lower Upper
 56 100
 55 76.7 54.8 82.2



#16
 Acetone
 Concen: 34.382 ug/l
 RT: 4.287 min Scan# 391
 Delta R.T. 0.012 min
 Lab File: VN071835.D
 Acq: 04 Apr 2022 16:41

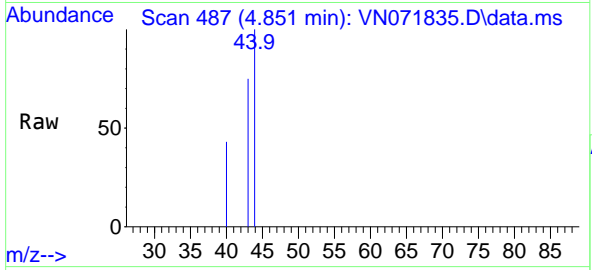
Tgt Ion: 43 Resp: 106913
 Ion Ratio Lower Upper
 43 100
 58 32.4 26.0 39.0



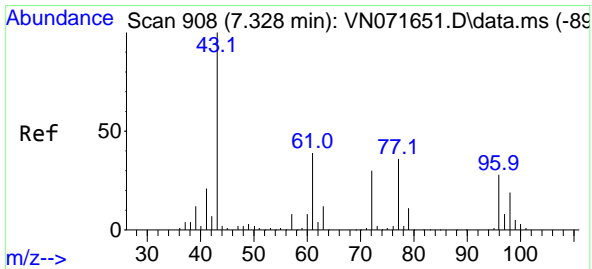
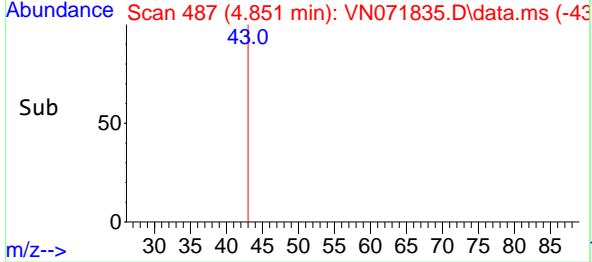
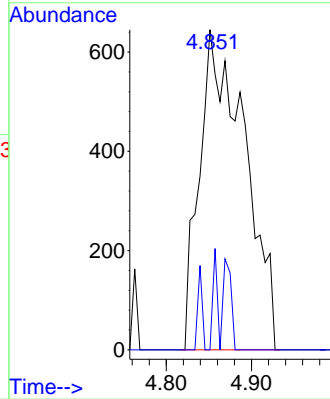


#18
 Methyl Acetate
 Concen: Below Cal
 RT: 4.851 min Scan# 41
 Delta R.T. 0.005 min
 Lab File: VN071835.D
 Acq: 04 Apr 2022 16:41

Instrument : MSVOA_N
 Client SampleId : 023-OUTFALL

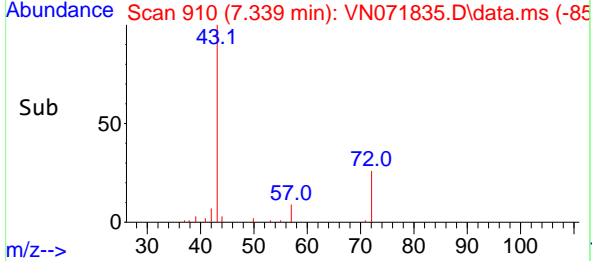
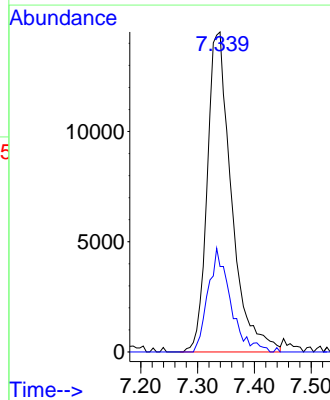
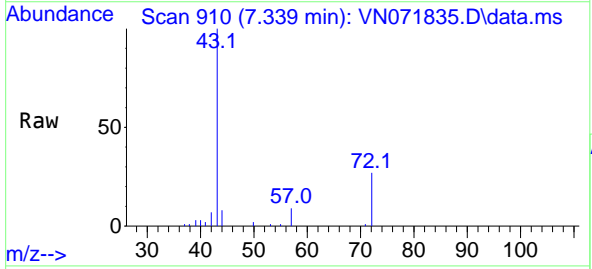


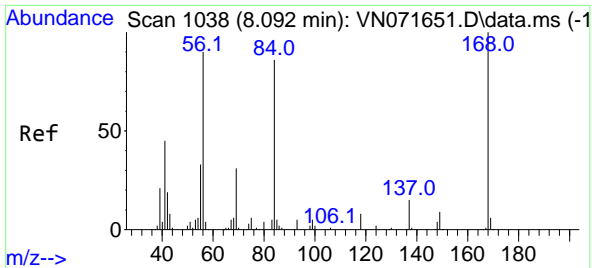
Tgt Ion: 43 Resp: 2376
 Ion Ratio Lower Upper
 43 100
 74 3.0 21.6 32.4#



#25
 2-Butanone
 Concen: 9.610 ug/l
 RT: 7.339 min Scan# 910
 Delta R.T. 0.011 min
 Lab File: VN071835.D
 Acq: 04 Apr 2022 16:41

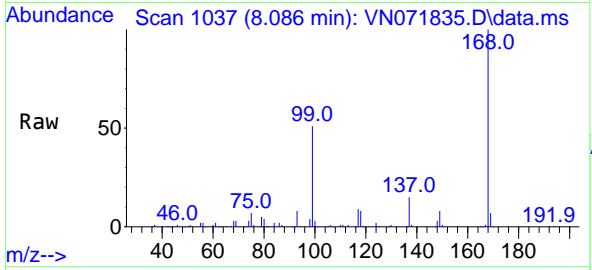
Tgt Ion: 43 Resp: 43081
 Ion Ratio Lower Upper
 43 100
 72 26.7 23.7 35.5



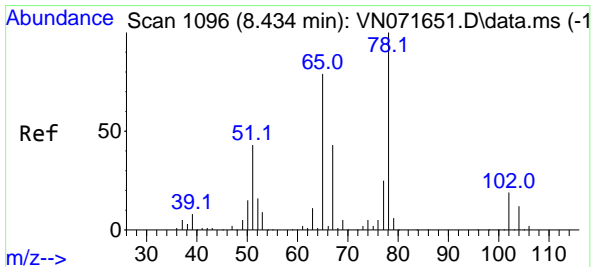
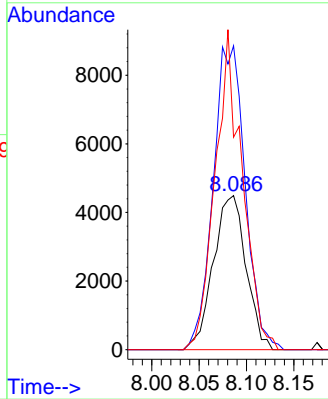
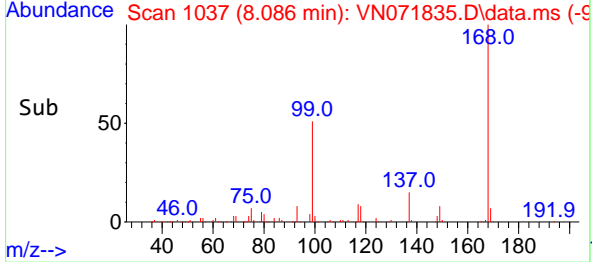


#31
 Cyclohexane
 Concen: 1.092 ug/l
 RT: 8.086 min Scan# 1037
 Delta R.T. -0.006 min
 Lab File: VN071835.D
 Acq: 04 Apr 2022 16:41

Instrument : MSVOA_N
 ClientSampleId : 023-OUTFALL

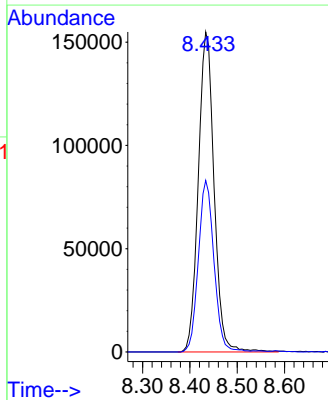
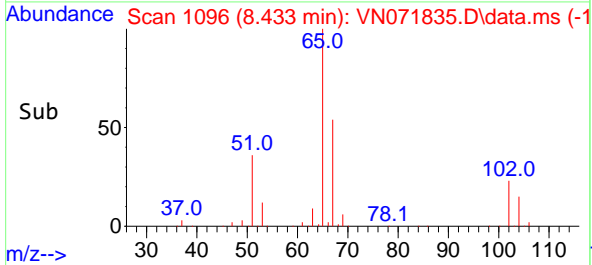
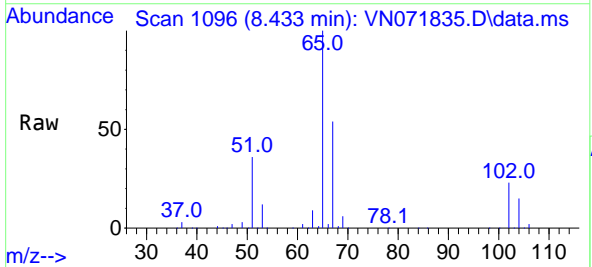


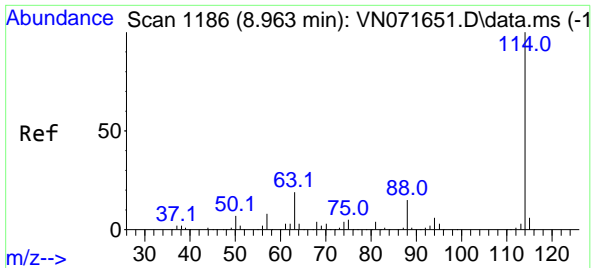
Tgt Ion: 56 Resp: 10805
 Ion Ratio Lower Upper
 56 100
 69 197.2 27.8 41.8#
 84 137.8 76.9 115.3#



#33
 1,2-Dichloroethane-d4
 Concen: 49.361 ug/l
 RT: 8.433 min Scan# 1096
 Delta R.T. -0.001 min
 Lab File: VN071835.D
 Acq: 04 Apr 2022 16:41

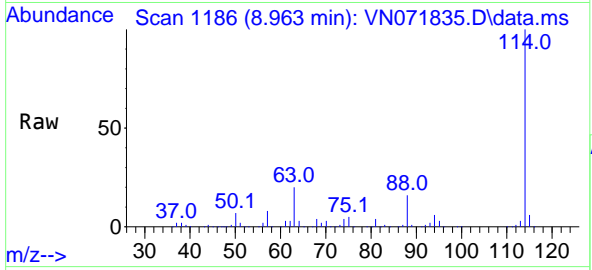
Tgt Ion: 65 Resp: 359160
 Ion Ratio Lower Upper
 65 100
 67 53.0 0.0 104.8



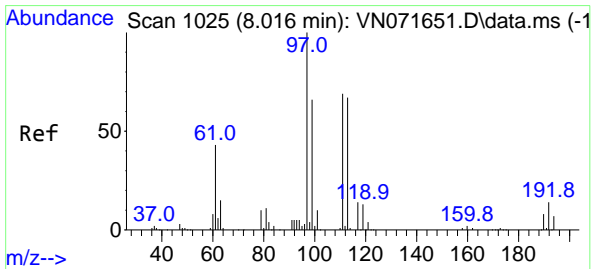
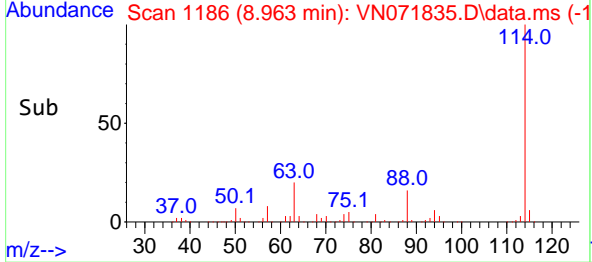
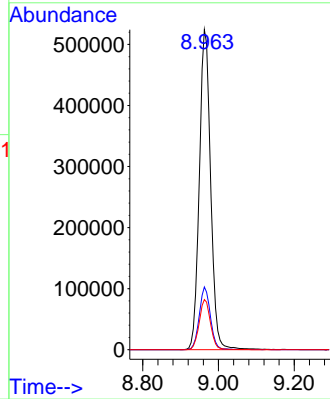


#34
 1,4-Difluorobenzene
 Concen: 50.000 ug/l
 RT: 8.963 min Scan# 1186
 Delta R.T. -0.000 min
 Lab File: VN071835.D
 Acq: 04 Apr 2022 16:41

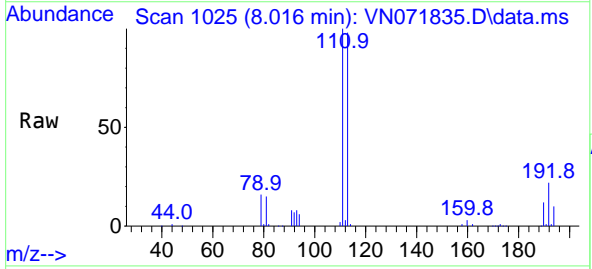
Instrument : MSVOA_N
 ClientSampleId : 023-OUTFALL



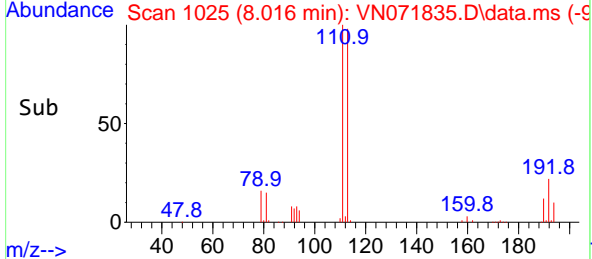
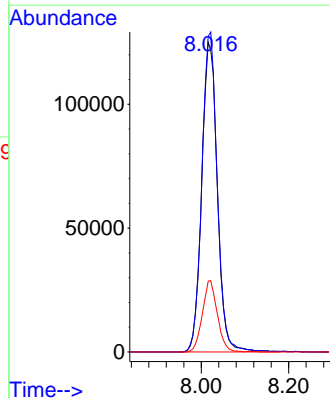
Tgt Ion:114 Resp: 1091083
 Ion Ratio Lower Upper
 114 100
 63 19.6 0.0 40.0
 88 15.7 0.0 32.6

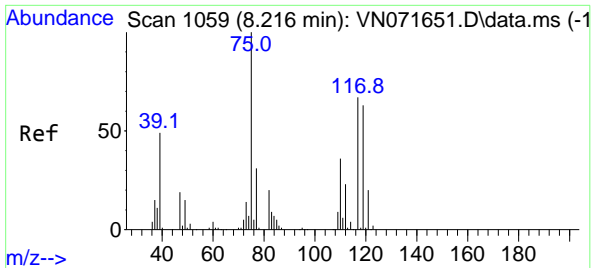


#35
 Dibromofluoromethane
 Concen: 48.356 ug/l
 RT: 8.016 min Scan# 1025
 Delta R.T. -0.000 min
 Lab File: VN071835.D
 Acq: 04 Apr 2022 16:41



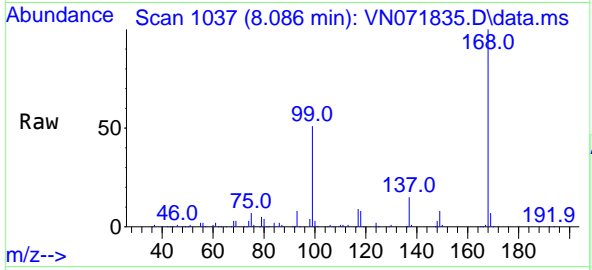
Tgt Ion:113 Resp: 310468
 Ion Ratio Lower Upper
 113 100
 111 102.0 81.4 122.0
 192 22.1 17.0 25.6





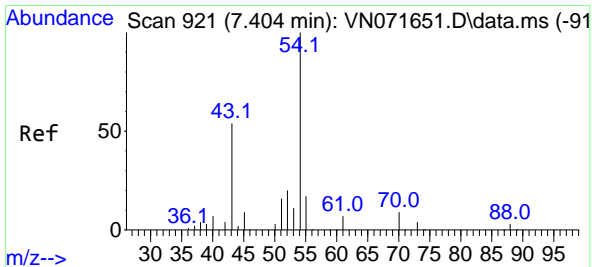
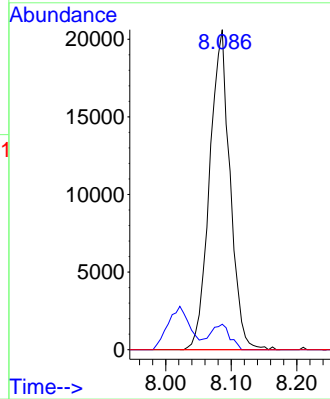
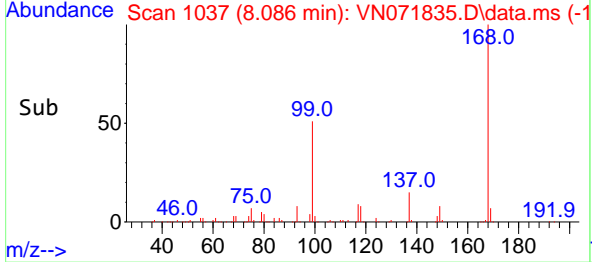
#36
 1,1-Dichloropropene
 Concen: 4.974 ug/l
 RT: 8.086 min Scan# 1059
 Delta R.T. -0.130 min
 Lab File: VN071835.D
 Acq: 04 Apr 2022 16:41

Instrument : MSVOA_N
 ClientSampleId : 023-OUTFALL

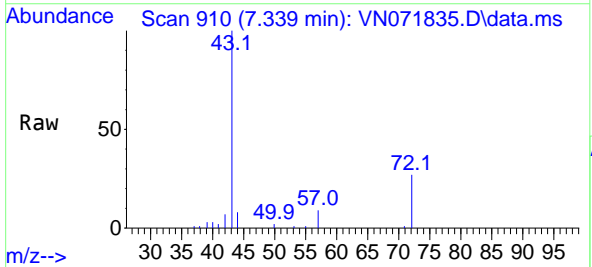


Tgt Ion: 75 Resp: 44600

Ion	Ratio	Lower	Upper
75	100		
110	7.5	18.3	54.8#
77	0.0	25.1	37.7#

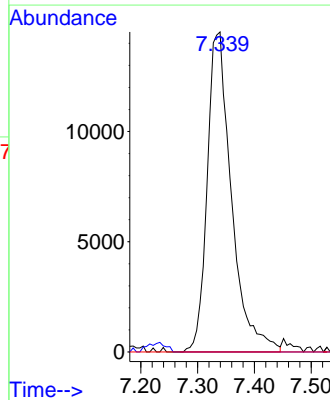
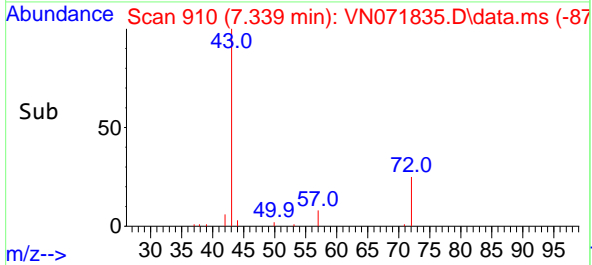


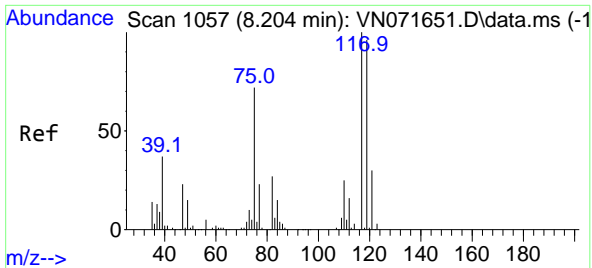
#37
 Ethyl Acetate
 Concen: 4.390 ug/l
 RT: 7.339 min Scan# 910
 Delta R.T. -0.065 min
 Lab File: VN071835.D
 Acq: 04 Apr 2022 16:41



Tgt Ion: 43 Resp: 43081

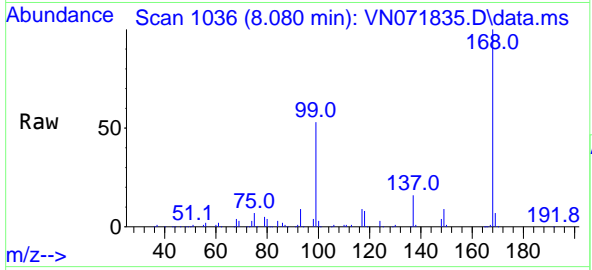
Ion	Ratio	Lower	Upper
43	100		
61	0.0	11.8	17.6#
70	0.0	9.3	13.9#



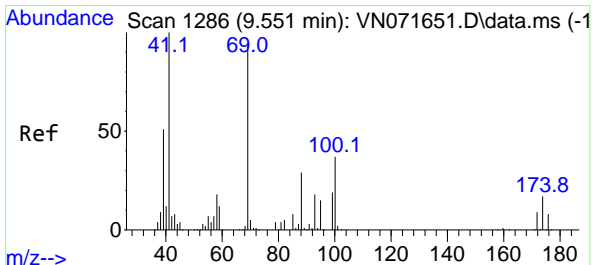
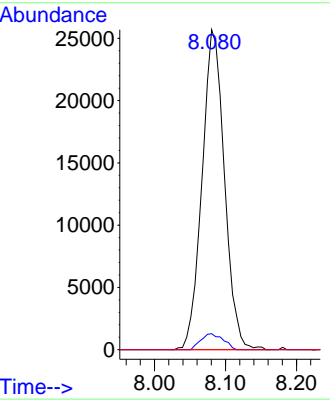
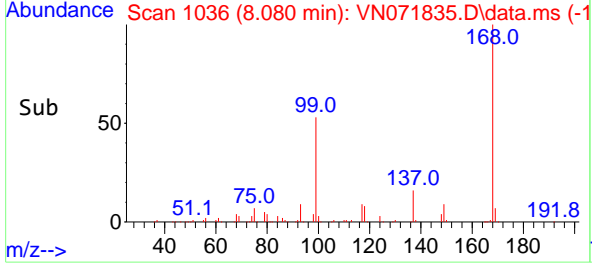


#38
 Carbon Tetrachloride
 Concen: 6.395 ug/l
 RT: 8.080 min Scan# 1057
 Delta R.T. -0.124 min
 Lab File: VN071835.D
 Acq: 04 Apr 2022 16:41

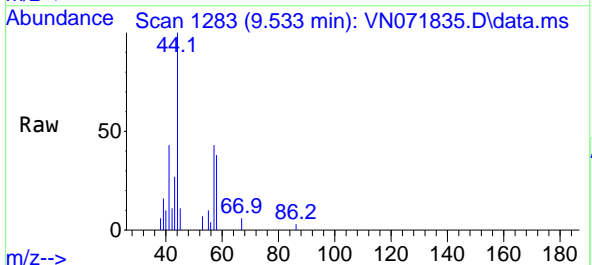
Instrument : MSVOA_N
 ClientSampleId : 023-OUTFALL



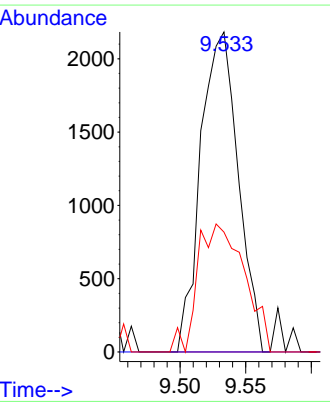
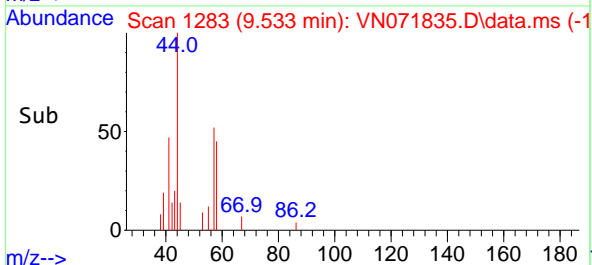
Tgt Ion: 117 Resp: 56197
 Ion Ratio Lower Upper
 117 100
 119 5.0 75.8 113.8#
 121 0.0 24.6 37.0#

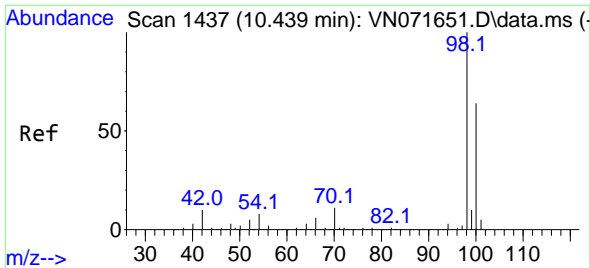


#48
 Methyl methacrylate
 Concen: 0.642 ug/l
 RT: 9.533 min Scan# 1283
 Delta R.T. -0.018 min
 Lab File: VN071835.D
 Acq: 04 Apr 2022 16:41



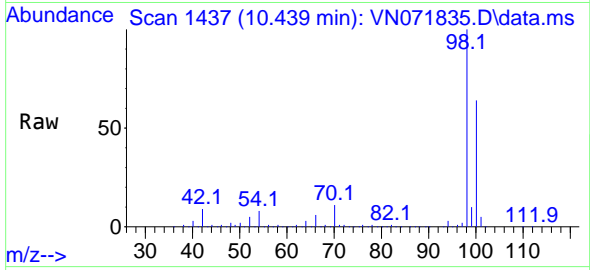
Tgt Ion: 41 Resp: 4349
 Ion Ratio Lower Upper
 41 100
 69 0.0 74.7 112.1#
 39 50.0 45.6 68.4



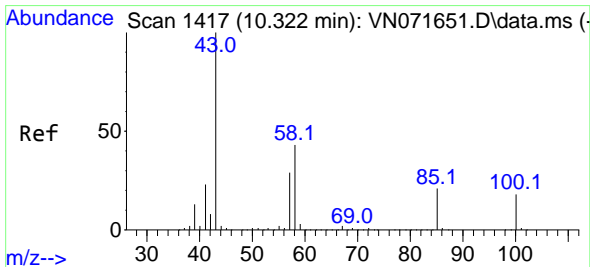
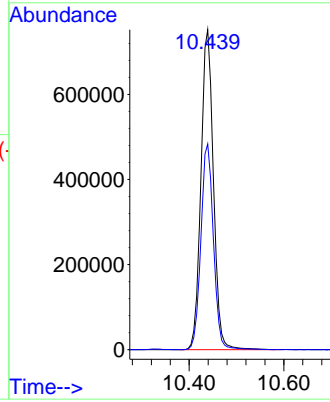
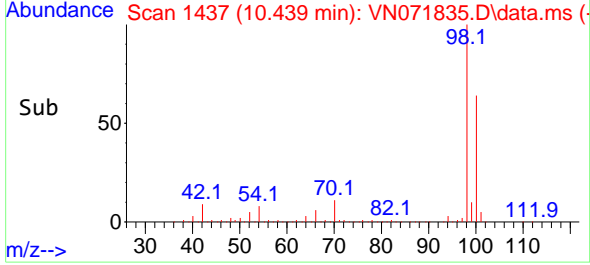


#50
 Toluene-d8
 Concen: 52.409 ug/l
 RT: 10.439 min Scan# 1418
 Delta R.T. 0.000 min
 Lab File: VN071835.D
 Acq: 04 Apr 2022 16:41

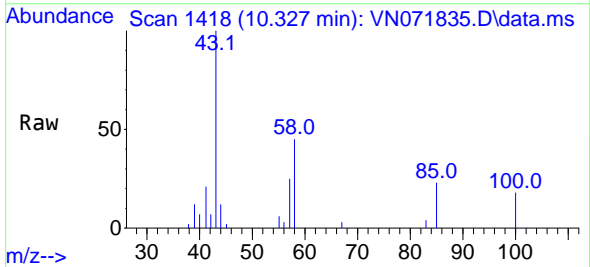
Instrument :
 MSVOA_N
 ClientSampleId :
 023-OUTFALL



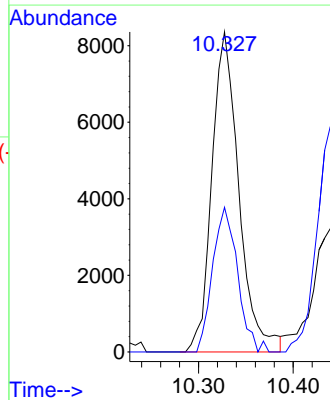
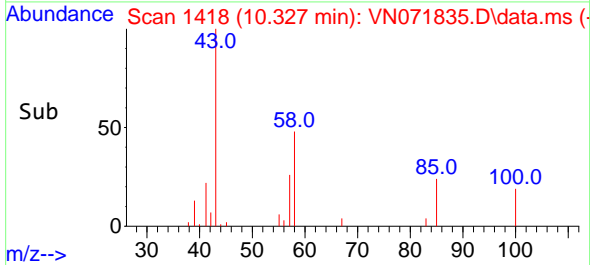
Tgt Ion: 98 Resp: 1376479
 Ion Ratio Lower Upper
 98 100
 100 64.6 52.6 78.8

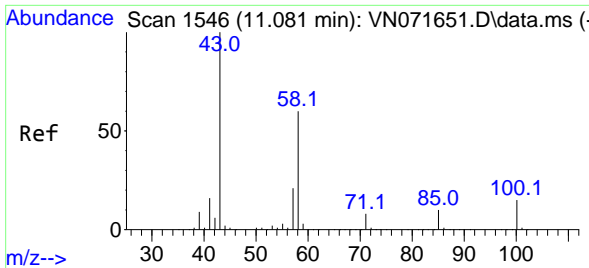


#51
 4-Methyl-2-Pentanone
 Concen: 1.767 ug/l
 RT: 10.327 min Scan# 1418
 Delta R.T. 0.005 min
 Lab File: VN071835.D
 Acq: 04 Apr 2022 16:41



Tgt Ion: 43 Resp: 16578
 Ion Ratio Lower Upper
 43 100
 58 41.7 34.1 51.1

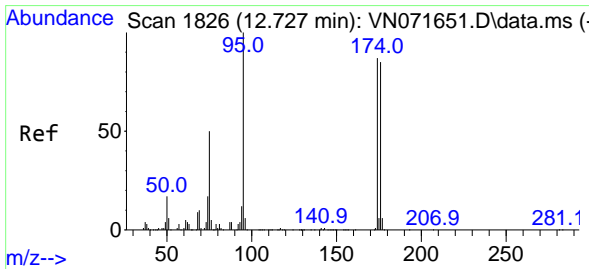
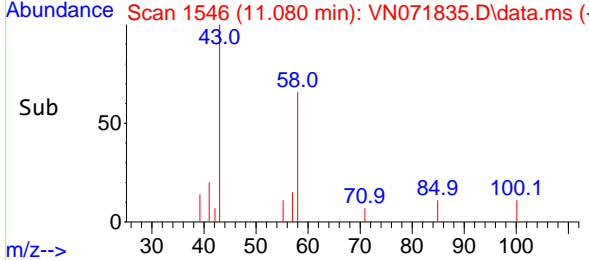
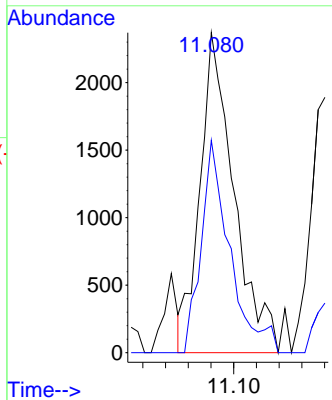
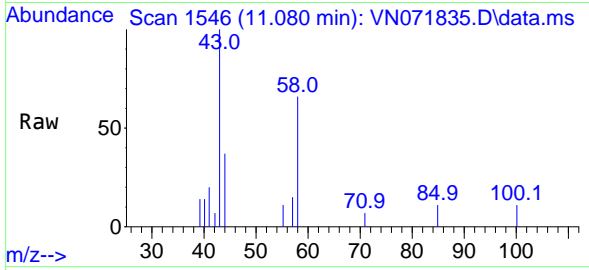




#59
 2-Hexanone
 Concen: 0.745 ug/l
 RT: 11.080 min Scan# 1111
 Delta R.T. -0.001 min
 Lab File: VN071835.D
 Acq: 04 Apr 2022 16:41

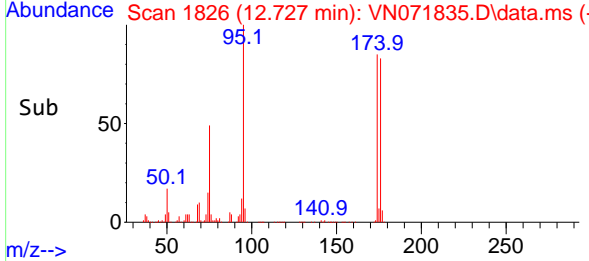
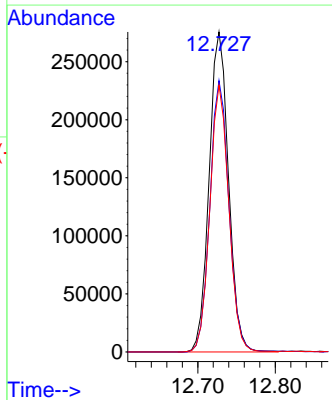
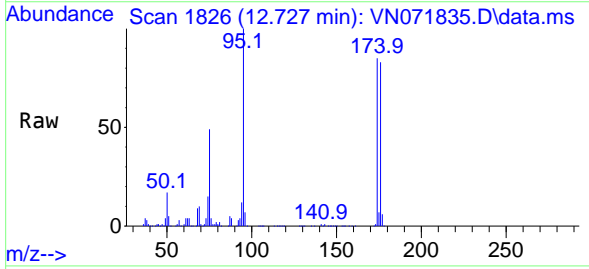
Instrument : MSVOA_N
 ClientSampleId : 023-OUTFALL

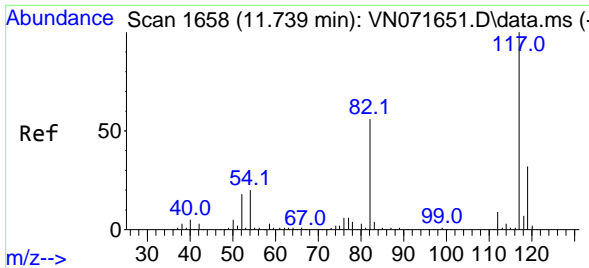
Tgt Ion: 43 Resp: 4920
 Ion Ratio Lower Upper
 43 100
 58 55.8 29.7 89.1



#62
 4-Bromofluorobenzene
 Concen: 56.417 ug/l
 RT: 12.727 min Scan# 1826
 Delta R.T. 0.000 min
 Lab File: VN071835.D
 Acq: 04 Apr 2022 16:41

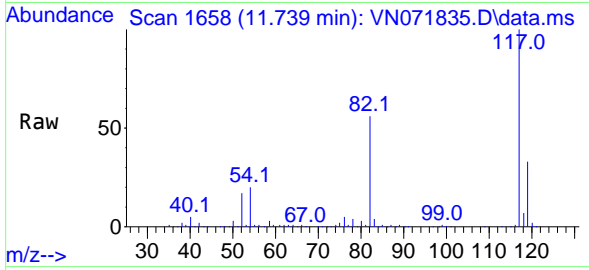
Tgt Ion: 95 Resp: 479226
 Ion Ratio Lower Upper
 95 100
 174 83.7 0.0 167.6
 176 81.5 0.0 163.4



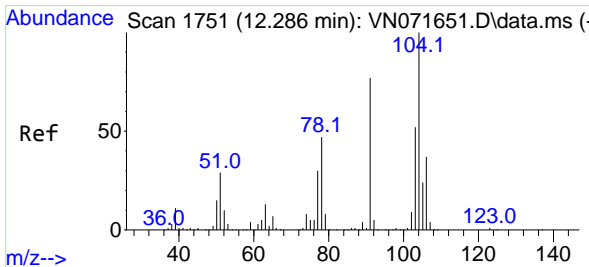
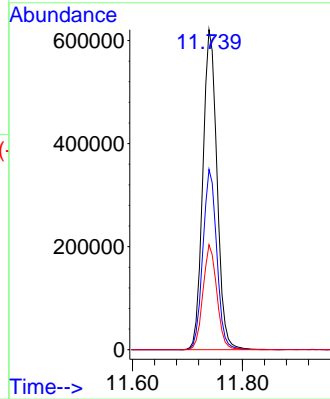
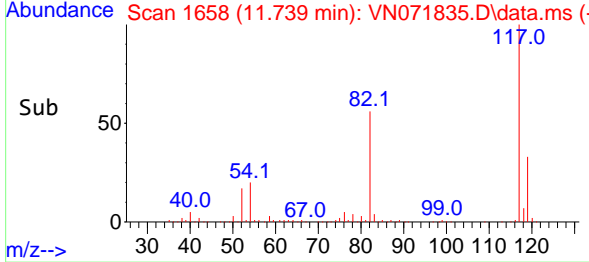


#63
 Chlorobenzene-d5
 Concen: 50.000 ug/l
 RT: 11.739 min Scan# 117
 Delta R.T. 0.000 min
 Lab File: VN071835.D
 Acq: 04 Apr 2022 16:41

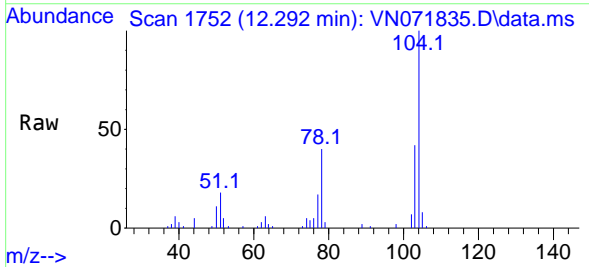
Instrument : MSVOA_N
 ClientSampleId : 023-OUTFALL



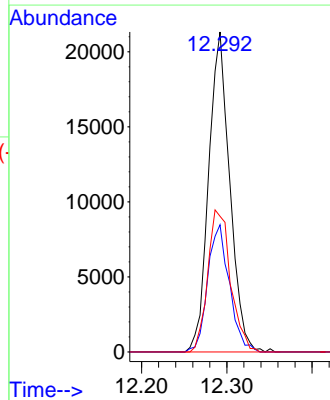
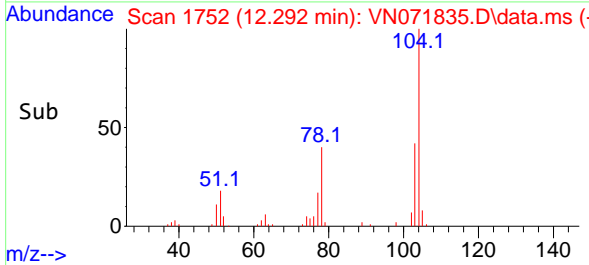
Tgt Ion:117 Resp: 1113550
 Ion Ratio Lower Upper
 117 100
 82 56.4 44.2 66.2
 119 32.8 25.4 38.0

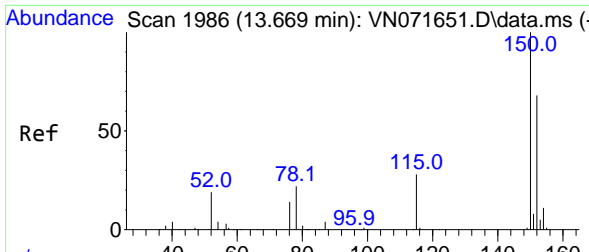


#70
 Styrene
 Concen: 1.682 ug/l
 RT: 12.292 min Scan# 1752
 Delta R.T. 0.006 min
 Lab File: VN071835.D
 Acq: 04 Apr 2022 16:41



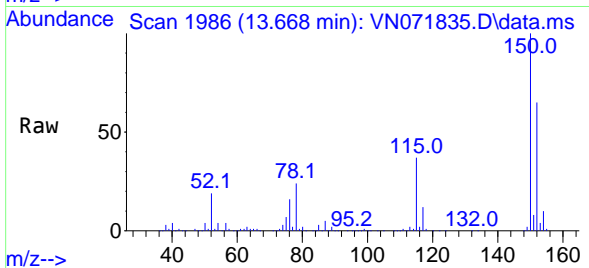
Tgt Ion:104 Resp: 36696
 Ion Ratio Lower Upper
 104 100
 78 40.8 39.5 59.3
 103 48.1 44.0 66.0



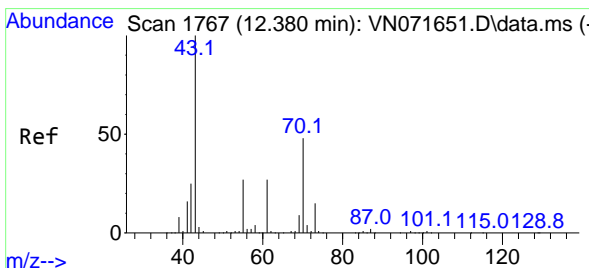
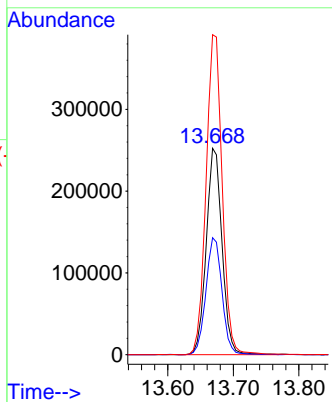
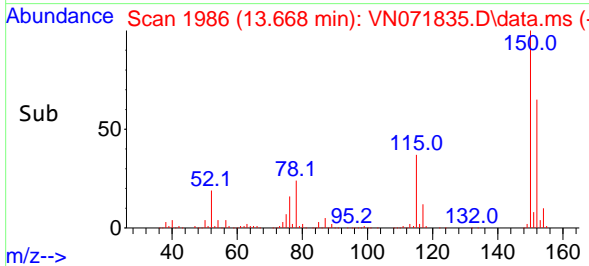


#72
 1,4-Dichlorobenzene-d4
 Concen: 50.000 ug/l
 RT: 13.668 min Scan# 1986
 Delta R.T. -0.001 min
 Lab File: VN071835.D
 Acq: 04 Apr 2022 16:41

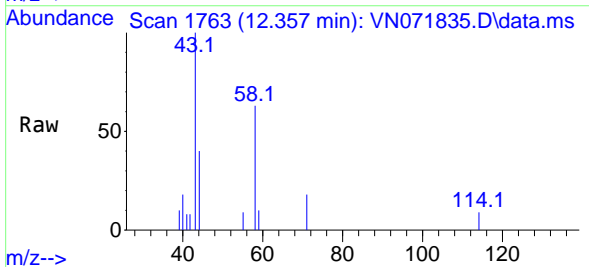
Instrument : MSVOA_N
 ClientSampleId : 023-OUTFALL



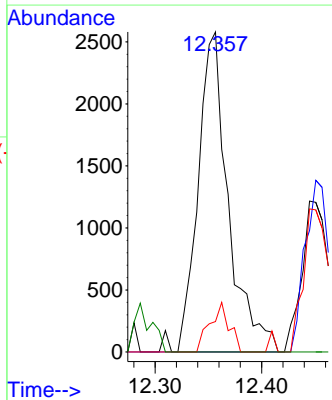
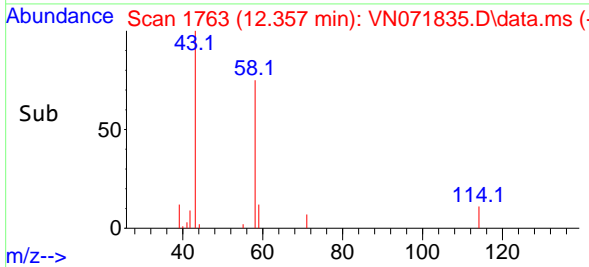
Tgt Ion:152 Resp: 423567
 Ion Ratio Lower Upper
 152 100
 115 57.9 28.9 86.7
 150 158.0 0.0 356.2

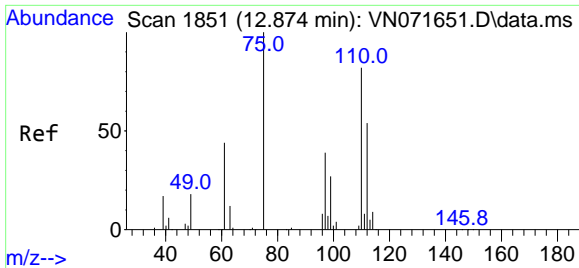


#74
 N-amy1 acetate
 Concen: 0.497 ug/l
 RT: 12.357 min Scan# 1763
 Delta R.T. -0.023 min
 Lab File: VN071835.D
 Acq: 04 Apr 2022 16:41



Tgt Ion: 43 Resp: 5081
 Ion Ratio Lower Upper
 43 100
 70 0.0 39.0 58.4#
 55 9.9 21.1 31.7#
 61 0.0 21.1 31.7#

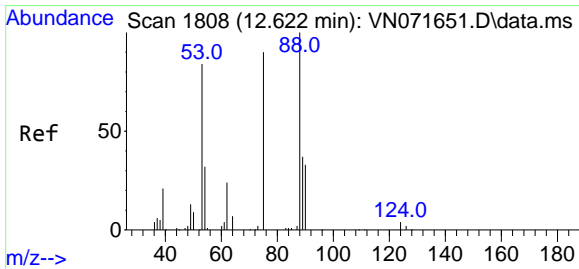
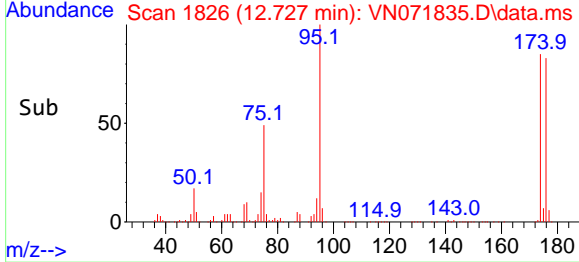
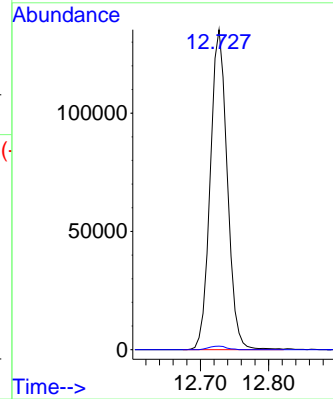
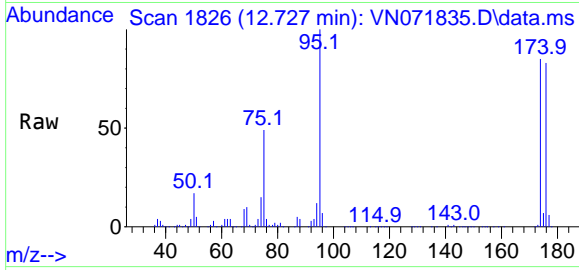




#76
 1,2,3-Trichloropropane
 Concen: 23.961 ug/l
 RT: 12.727 min Scan# 1826
 Delta R.T. -0.147 min
 Lab File: VN071835.D
 Acq: 04 Apr 2022 16:41

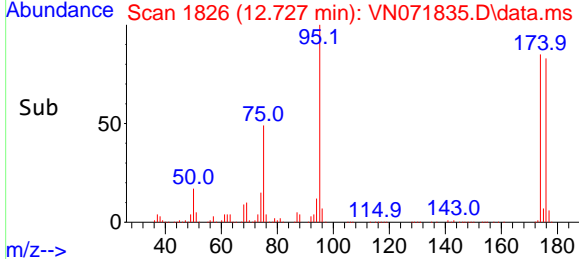
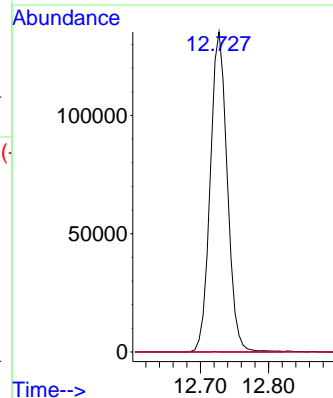
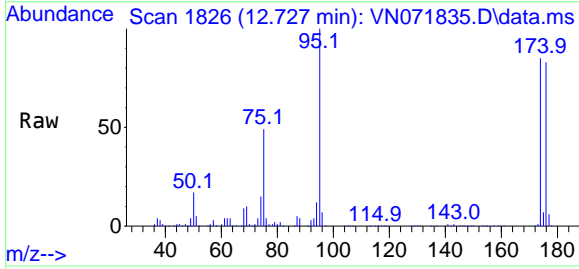
Instrument : MSVOA_N
 ClientSampleId : 023-OUTFALL

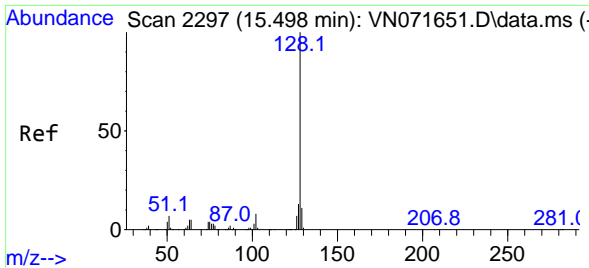
Tgt Ion: 75 Resp: 235107
 Ion Ratio Lower Upper
 75 100
 77 1.2 98.5 295.5#



#81
 trans-1,4-Dichloro-2-butene
 Concen: 74.253 ug/l
 RT: 12.727 min Scan# 1826
 Delta R.T. 0.105 min
 Lab File: VN071835.D
 Acq: 04 Apr 2022 16:41

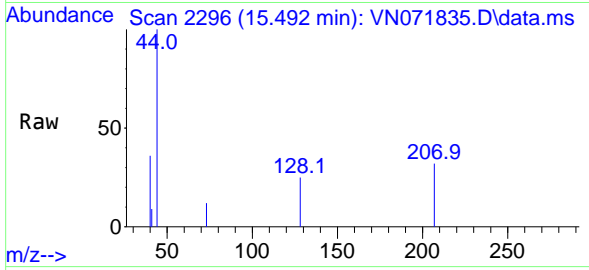
Tgt Ion: 75 Resp: 235107
 Ion Ratio Lower Upper
 75 100
 53 0.0 78.0 117.0#
 89 0.0 37.2 55.8#





#95
 Naphthalene
 Concen: 3.826 ug/l
 RT: 15.492 min Scan# 21
 Delta R.T. -0.006 min
 Lab File: VN071835.D
 Acq: 04 Apr 2022 16:41

Instrument :
 MSVOA_N
 ClientSampleId :
 023-OUTFALL



Tgt Ion:128 Resp: 476

Ion	Ratio	Lower	Upper
128	100		
127	0.0	10.3	15.5#
129	0.0	8.6	13.0#

